

Mus 174-18

+

Tonadilla a seis.

de los Maestros.

Con Violines Tromp.

e Basso.

de la

Señor Misson.


1758.

Para el Auto. Sacram.

174-18


1250005162

|| Tondilla a seis ||


La Teresa 


La Catala 

La Rosalea 

S. Coronado 

S. Labenal 

S. Juanman. 

Baxo 

And.^{te} Poco

Soto noche

tere

Cant.

Vosa

Cor.

Nabe

Inor

Per pieta Vel i dol mio no, no, mi dir ch' sono ingrato ch' sono in

Crescendo *piano* *brabo*

po

The image shows a page of handwritten musical notation on aged paper. It features six staves. The top staff is labeled 'tere'. The second staff is for the 'Cant.' (Singer) and contains the lyrics 'Per pieta Vel i dol mio no, no, mi dir ch' sono ingrato ch' sono in'. The third staff is labeled 'Vosa'. The fourth staff is for the 'Cor.' (Choir) and includes dynamic markings: 'Crescendo', 'piano', and 'brabo'. The fifth staff is labeled 'Nabe' and the sixth 'Inor'. The bottom staff contains musical notation for a piano accompaniment, starting with a 'po' dynamic marking and ending with a key signature change to one sharp (F#).

te

Ca

Vo.

Cor

La

Juan

in fe li ce a ven tu ra to a va tan

gra to in fe li ce a ven tu ra to a va tan

Capari, que del
cera: e sena
atica; ad e
wo lei.

Unite petto

Detailed description: This is a handwritten musical score on aged paper. It features several staves. The top staff is a vocal line with lyrics 'in fe li ce a ven tu ra to a va tan'. The second staff is another vocal line with lyrics 'gra to in fe li ce a ven tu ra to a va tan'. Below these are staves for 'Vo.', 'Cor', 'La', and 'Juan'. The 'Cor' part includes the instruction 'Capari, que del cera: e sena atica; ad e wolei.' and 'Unite petto'. The 'Juan' part has a single line of music. The bottom of the page has several empty staves. The handwriting is in brown ink.

mau vivo

Te
za il ciel mi fa il ciel mi fa

Ca
za il ciel mi fa il ciel mi fa

ro.

Co.

La.
mui buenas tardes mui buenas tardes de Dios, auitedes

Ja.

mau vivo

Te

era ya tiempo de poder nos

Ca.

ni do mui bien Veni do sea su merze

Nos.

Cor.

mui bien Veni do sea su merze

La

Juan

te
Ver en este instante mi hermano se fue. Y al lego el dia que
ca
en este instante ~~mi~~ hermano se fue Y al lego el dia que

To.

Cor.
Y al lego el dia ~~mi~~ que

La
Y al lego el dia ~~mi~~ que

Juan

Musical notation on a single staff.

te
tanto anele

Ca
tanto anele

Rosa
si

Cor.
tanto anele Seras mia

L.
tanto anele Seras falsa

Juar

no
Ser tuia

seras firme
havra olvido?

Pue llega ami brazos

Pue llega ami brazos

Pue llega ami

fin

bien

*p*mo *crei* *f* *f*mo
le *ga* *tu mu*
llega llega e mu chachos.
que veo que el cucho q' llega La ver-
ura *zos* *chi ton*
ura *vo* *tu her mano,*
Juan
bueno - gua po - lindo.
*p*mo *crei* *f* *f*mo

Violin Minue

Violin Minue musical notation on a single staff, featuring a treble clef, a key signature of one sharp (F#), and a 3/4 time signature. The notation includes various rhythmic values such as eighth and sixteenth notes, and rests.

k
 Der
 Ca
 a cantar
 ha, mi Pia
 Cor.
 Vamo
 acompas
 bravo
 La.
 a bai lar
 erre pie
 Juan

Five vocal staves (k, Ca, Cor., La., Juan) with lyrics written below the notes. The lyrics are: "Der", "a cantar ha, mi Pia", "Vamo acompas bravo", "a bai lar erre pie".

Minuete Appazio
 Piano sempre

Minuete Appazio musical notation on a single staff, featuring a treble clef, a key signature of one sharp (F#), and a 3/4 time signature. The notation includes various rhythmic values such as eighth and sixteenth notes, and rests. The tempo marking "Piano sempre" is written below the staff.

te

ca

the ra mi fai mo rir daffa no

Vol.

Cor.

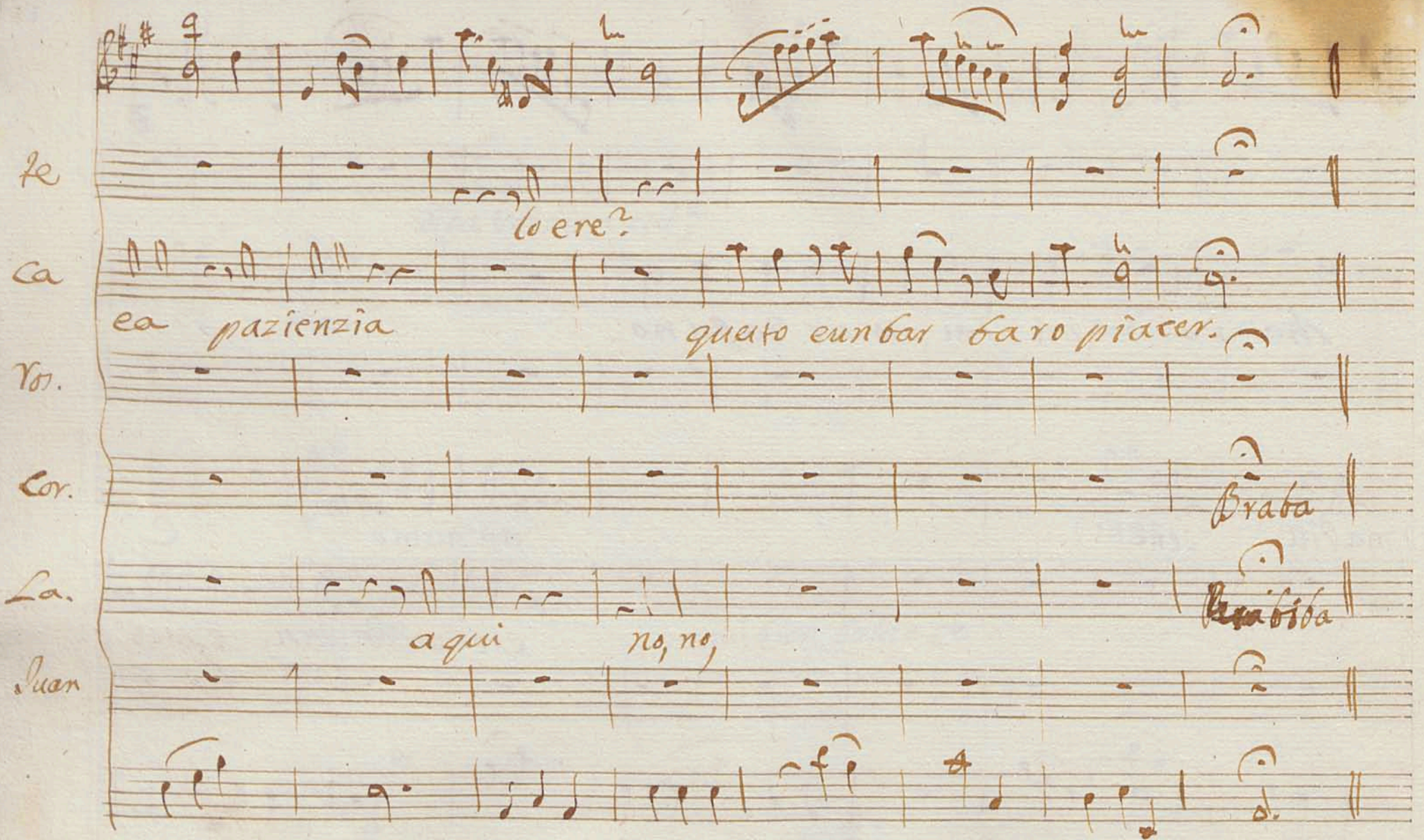
ma piu bene andiamo e

L.

esse Cuerpo ari, esse es

Juan.

Handwritten musical score for a vocal ensemble. The score is written on seven staves. The top staff is the instrumental part, starting with a treble clef, a key signature of one sharp (F#), and a 9/8 time signature. The lyrics are written below the vocal staves. The lyrics include: "lo ere?", "ea pazienza", "queto eun bar baro piacer.", "Braba", "aqui", "no, no,", and "Brabisa". The score includes various musical notations such as notes, rests, and dynamic markings like "ff".



Allegretto Poco

Te

Ca

Vo.

lu, lu, lu

Ven a casa ven,

Cor.

quequiera di mona mia, di?

La

Mun

la, la,

Allegretto Poco

le po

te
que tiene el hermano mio

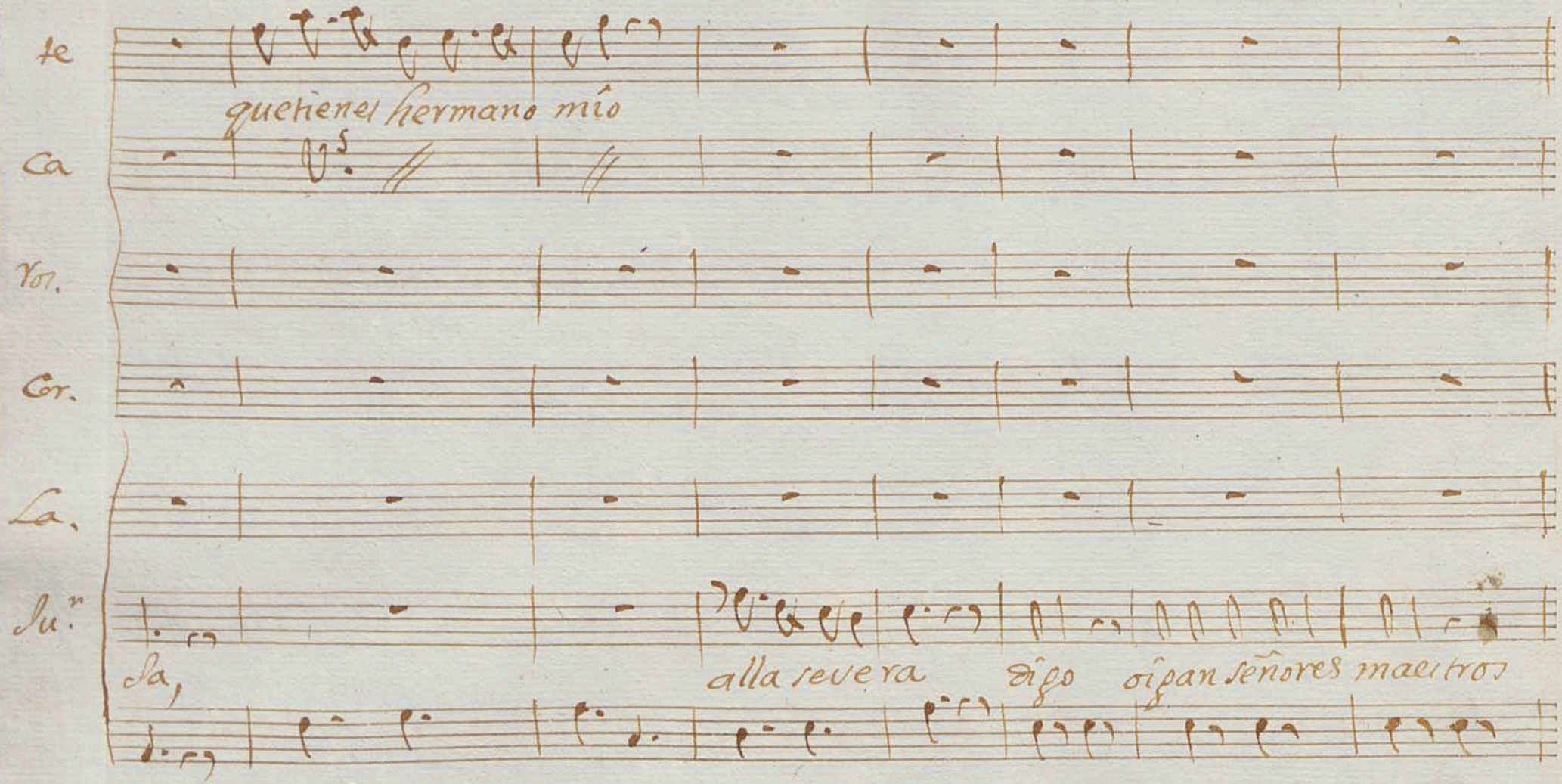
Ca
V.^s //

Viol.
-

Cor.
-

Sa.
-

Su.ⁿ
Sa,
alla severa digo oigan señores maestros



Te
Ca
Yor.
Cor.
Sa!
Su.ⁿ

Ven pobre ina
loare
loare

Ongusto me ande azer, Zeigfen aqueta casa no pondran mai lo pies, entien den

te

ca

tor.

Cor.

La²

Juan

no aya mai puei no, no,

Lo men mendare si,

zene Pourezito uen

Palabras medas di,^a

A la doi si a fe!

aca vemos

te
 ca
 Voi.
 Cor.
 La!
 Juan
 pueracave se
 yari
 pueracave se
 Maaderer,
 Con siguid.

Seabien
 Seabien
 Seabien
 Seabien
 Sigue Seg.
 Todos Unisonas

Todos Juntos

Sequi.

Allegro

Estas sigui di llitas de nueva moda

de nueva moda — De nueva moda — se cantaran ma
 ñana con sei per sonas con sei per sonas

The musical score for 'Todos Juntos' consists of three systems. The first system has a vocal line with notes and rests, and a piano accompaniment line with chords and eighth notes. The second system continues the vocal line with lyrics 'de nueva moda — De nueva moda — se cantaran ma' and the piano accompaniment. The third system continues the vocal line with lyrics 'ñana con sei per sonas con sei per sonas' and the piano accompaniment.

Mulieres

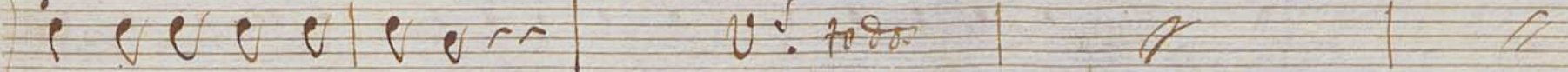
hombres

Tu chi,chi Tu, chi-# Tu chi-# Tu chi, # se cantaran mañana con sei per
 oigan Vengan siga corra bomba tum # # se cantaran mañana con sei per

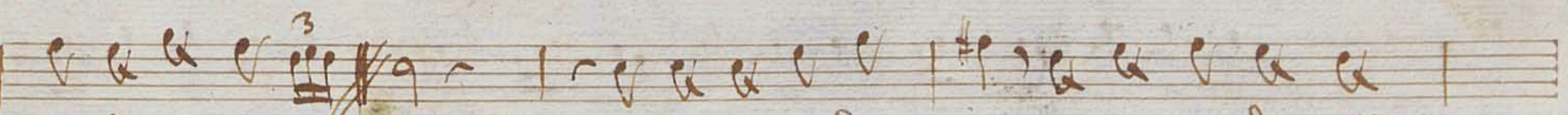
The piano accompaniment for the women's and men's parts consists of a single line of music with chords and eighth notes. It starts with a 'p' dynamic marking and ends with a 'f' dynamic marking.



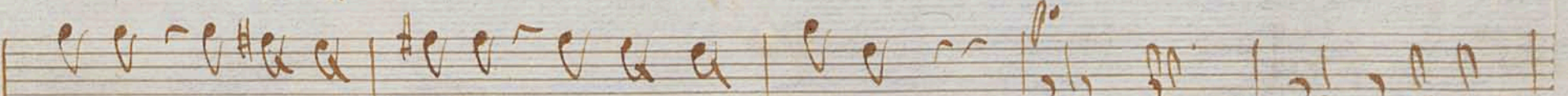
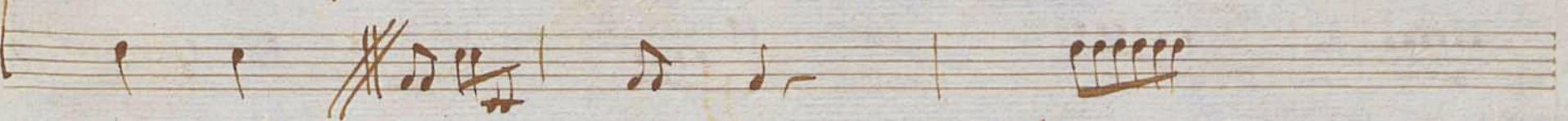
sonas — 4 *Secanta ran ma ñana con sei per sonas*



sonas — 4



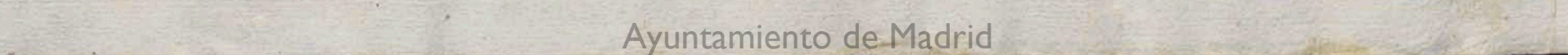
Consei per sonas *aqui aguarda mos a que nos den un*



victor sianagra da do — 4



Tu, chichi, tu, chi, chi,



fe
Yu, chi # Yu, chi # ~~aque~~nos den un victor sianagra dado sianagra
aque nos den un victor sianagra dado sianagra
dado aque nos den un victor sianagra dado
dado
dado
fini

Violin Primero

Tonadilla à 6.

Delos Maestros

del

J.^r Mison

1758

Conadilla e los. ~~D.~~

Maestros
Violin ~~Primer~~

Viol. An. 2^a mapoco

tem. *All.* *f.* *p. rec.* *f.* *fmo* *f.* *p.* *f.*

Minuet

And.^{te} ~~maestros~~

Allegretto poco

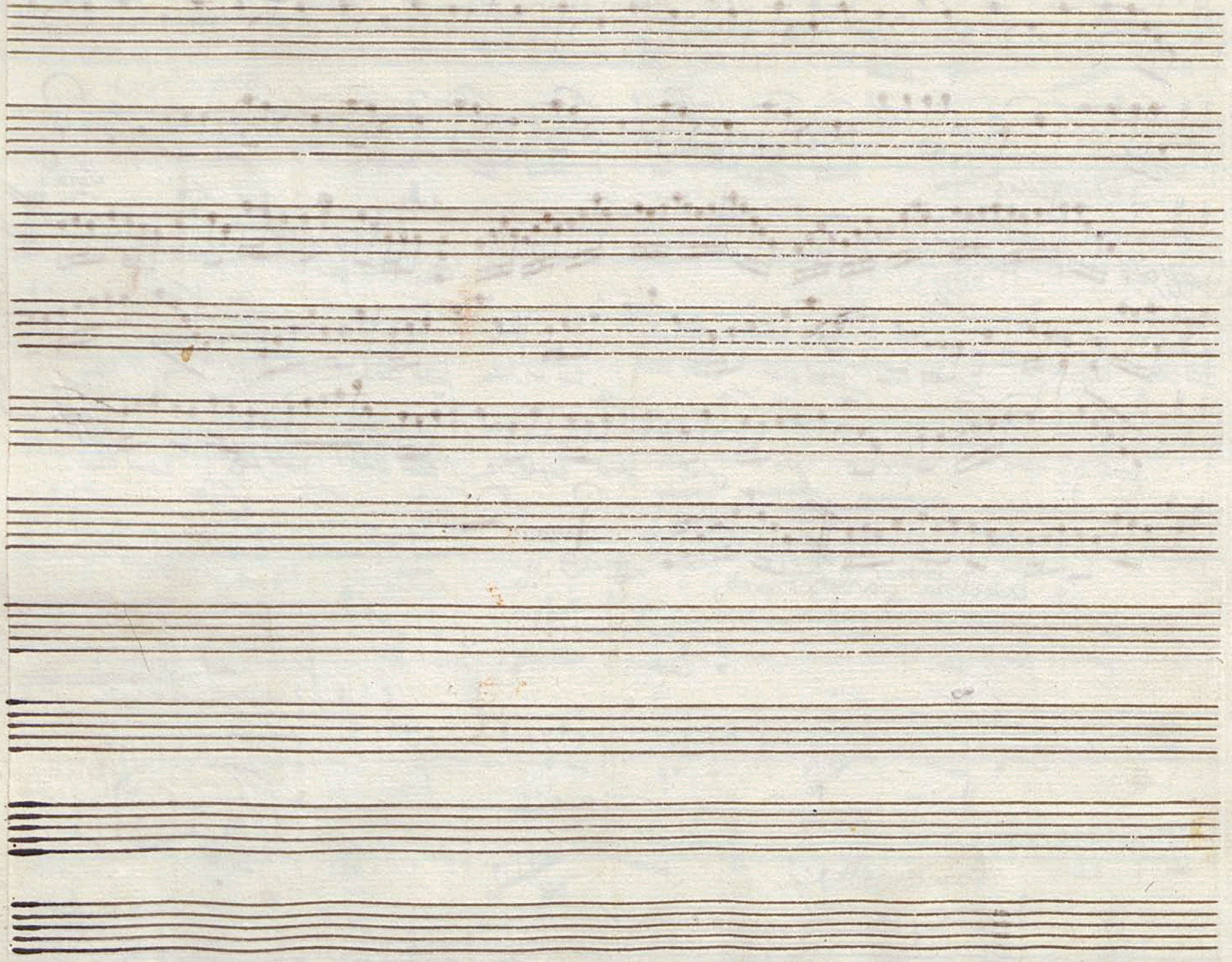
f. *p.* *f.*

Sepuixillas

Voz

fe po fe po fe po fe

ala Señal do vezes mas.



Violín Segundo

Tonadilla à 6.

de los Maestros

And. ma Poco

po

ren

ren.

Pausa

Alto.

poco crescendo fe

fmo

And. minue

po

Att. Poco

fe

p^o

Seguidi!

Alto

fe

fe

p^o

fe

fe

fe

fe

3

12 veces / al señal

fine



+

Violin Segundo

Tonadilla à seis.

de los Maestros.

Tonadilla

And.^{te} Poco

p

Paura *p*

Atto

p. cresc. *f*

Minuete *p*

p *pmo*

p *f*

p *f*

Att.^o Poco

Handwritten musical score on ten staves. The music is written in treble clef with a key signature of two sharps (F# and C#). It features various rhythmic patterns, including eighth and sixteenth notes, and rests. Performance markings include *fe*, *p*, and *38*. A section starting at measure 38 is marked *Seguidilla*. The piece concludes with a double bar line and repeat dots.

2 vezes
ala señal

174.18

+
Oboes

Tonadilla a 6.

de los Maestros.

Tonadilla. a 6.

And. P^oco

Alto

Minuete. p^o cres. fe

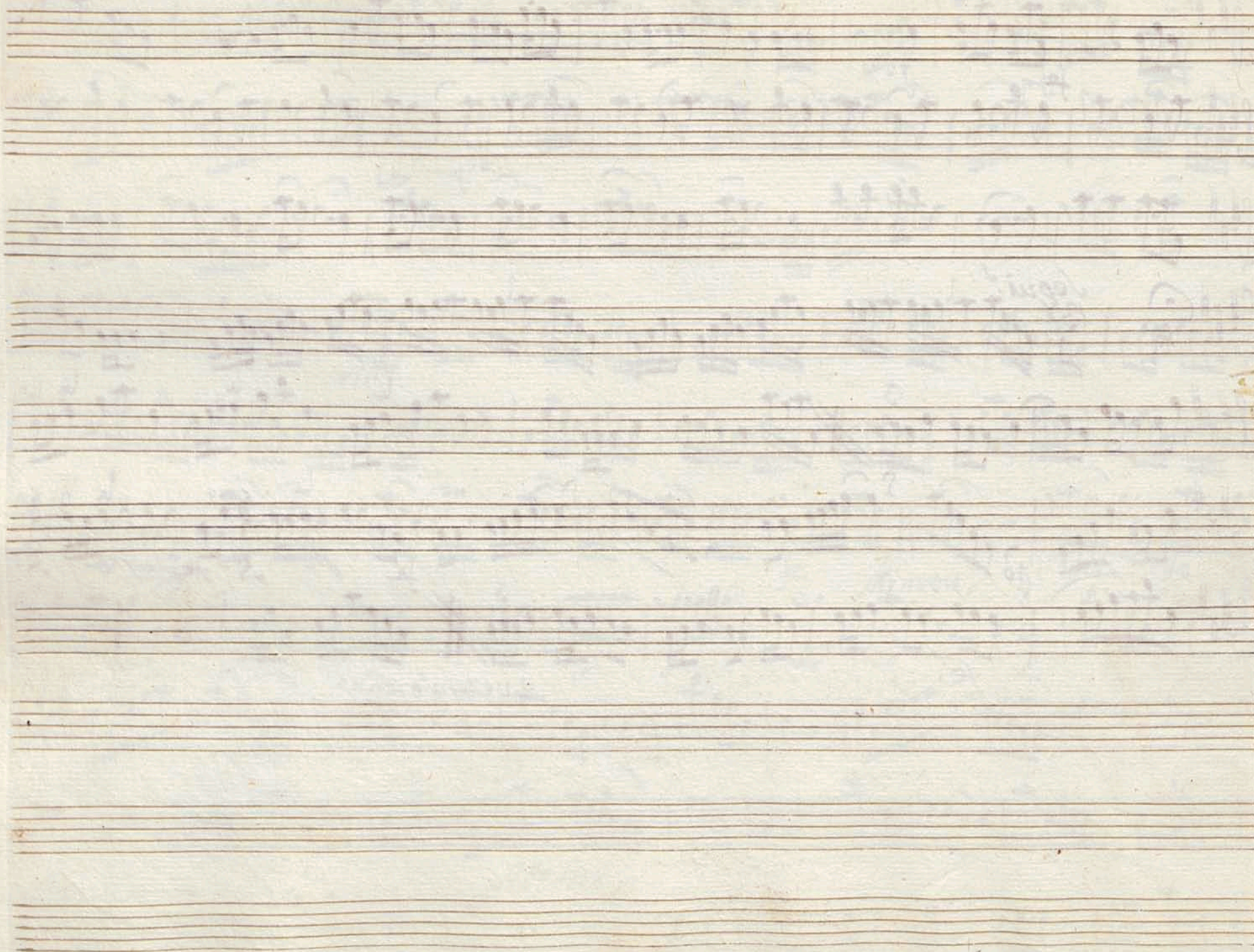
Alto P^oco

Detailed description: This is a page of handwritten musical notation for a piece titled 'Tonadilla. a 6.'. The score is written on ten staves. The first staff begins with the tempo marking 'And. P^oco' and a treble clef. The key signature consists of two sharps (F# and C#), and the time signature is 3/4. The notation is dense, featuring many sixteenth and thirty-second notes, often beamed together. There are several dynamic markings throughout, including 'Alto', 'p^o cres.', 'fe', and 'Alto P^oco'. A section of the music is marked 'Minuete.' and includes a 'p^o cres.' marking. The paper shows signs of age, with some staining and a slightly yellowed tone.

Handwritten musical score on seven staves. The notation includes treble clefs, a key signature of two sharps (F# and C#), and a 3/4 time signature. The music features various rhythmic patterns, including eighth and sixteenth notes, and rests. Dynamic markings such as *f* (forte) and *p* (piano) are present. A *Segui* marking is written above the fourth staff. The piece concludes with a double bar line and a repeat sign.

f

2 veces a la seña



+

Trompa Primera

Tonadilla à 6.

de los Maestros

Tonadilla

+

Handwritten musical score for a piece titled "Tonadilla". The score is written on ten staves, with a treble clef and a key signature of two sharps (F# and C#). The tempo is marked "And. Poco" at the beginning. The music features various rhythmic patterns, including eighth and sixteenth notes, and rests. Dynamic markings such as *p*, *ff*, *f*, *ff*, and *ff* are used throughout. A section is marked "Minuet And." and another "Alto". A "Pausa" (pause) is indicated in the second staff. The score concludes with a final cadence.

Musical score in D major, 3/8 time. The score consists of six staves. The first staff has a treble clef and a key signature of two sharps (F# and C#). It contains a sequence of quarter notes: G4, A4, B4, C#5, D5, E5, F#5, G5, A5, B5, C#6, D6. The second staff has a treble clef and contains eighth notes: G4, A4, B4, C#5, D5, E5, F#5, G5, A5, B5, C#6, D6. The third staff has a treble clef and contains sixteenth notes: G4, A4, B4, C#5, D5, E5, F#5, G5, A5, B5, C#6, D6. The fourth staff has a treble clef and contains eighth notes: G4, A4, B4, C#5, D5, E5, F#5, G5, A5, B5, C#6, D6. The fifth staff has a treble clef and contains quarter notes: G4, A4, B4, C#5, D5, E5, F#5, G5, A5, B5, C#6, D6. The sixth staff has a treble clef and contains a quarter note: G4. The score includes dynamic markings 'f' and 'ff', and performance instructions 'Segui - Adto' and '2 veces a la señal'.

Sigue la Contradanza //

Y da fin

Trompa Segunda

Tonadilla à 6.

de los Maestros.

Tonadilla a 6.

And.^{te} Poco

3/4

p

Pausa

Alto

p. cresc.

fe

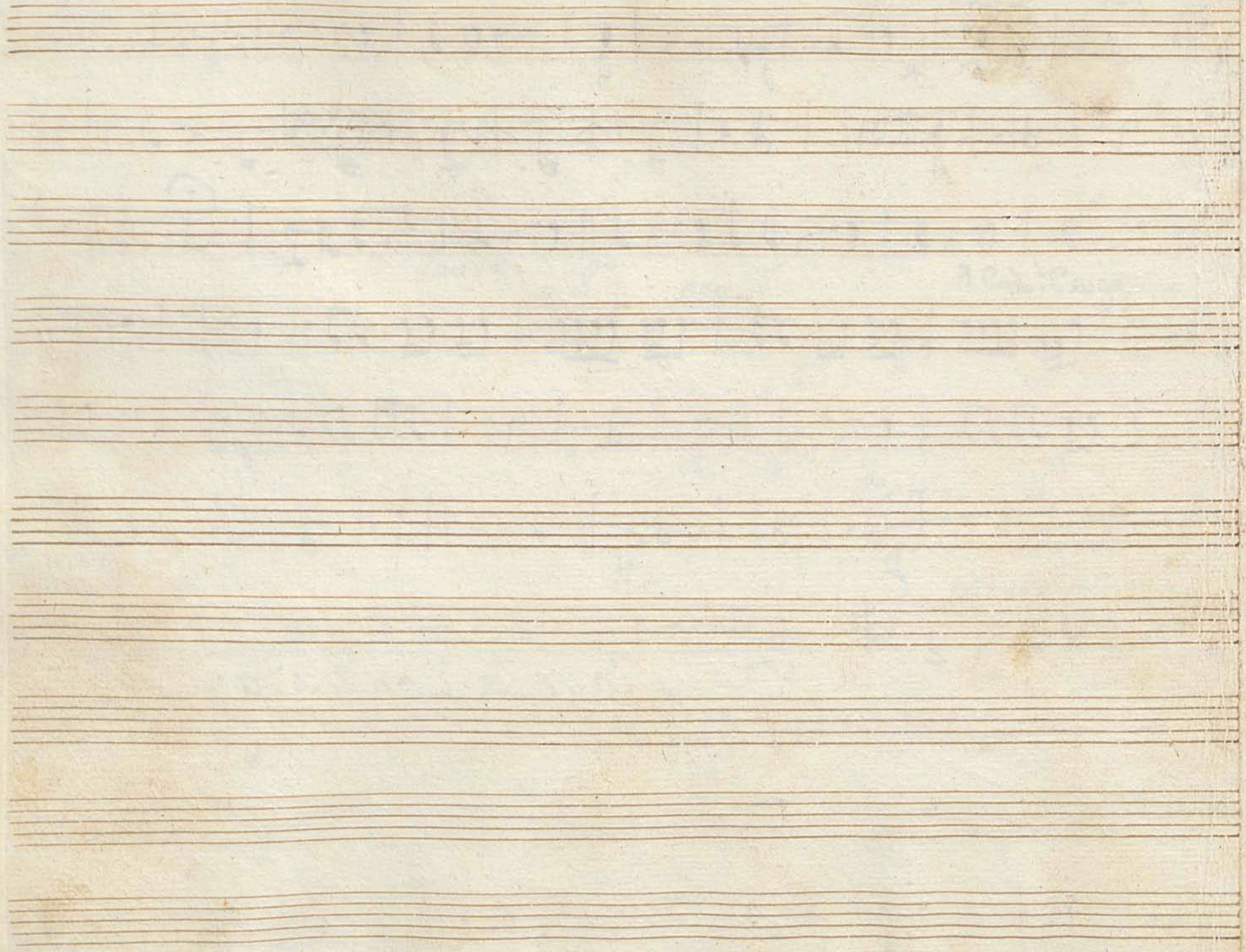
fmo.

Minuere And.^{te}

2

Handwritten musical score on seven staves. The first staff begins with a treble clef, a key signature of two sharps (F# and C#), and a 6/8 time signature. The tempo marking *Alto* is written above the first few notes. The second staff contains a measure with a 4/4 time signature. The third staff ends with a 3/4 time signature. The fourth staff is marked *Segue 2.º And R* and begins with a 3/8 time signature. The fifth staff starts with a double bar line and a 4/4 time signature. The sixth staff ends with the instruction *2veces ala señal*. The seventh staff concludes with a double bar line and repeat dots.

Sigue la Contradanza



+

Violon, Sonadilla

à 6.

delos Maestros

Tonadilla

And. Poco

3

p

pau

ff

Allegretto

ff

Handwritten musical notation on a single staff, featuring a treble clef, a key signature of two sharps (F# and C#), and a common time signature (C). The notation consists of a series of rhythmic patterns, primarily eighth and sixteenth notes, with a section of the staff crossed out with diagonal lines.

Handwritten musical notation on a single staff, featuring a treble clef, a key signature of two sharps (F# and C#), and a common time signature (C). The notation includes quarter notes, eighth notes, and sixteenth notes, with some notes marked with a red 'f'.

Sequit. 5. Alt.

Handwritten musical notation on a single staff, featuring a treble clef, a key signature of two sharps (F# and C#), and a 3/4 time signature. The notation is characterized by dense sixteenth-note passages.

Handwritten musical notation on a single staff, featuring a treble clef, a key signature of two sharps (F# and C#), and a common time signature (C). The notation includes sixteenth-note passages and rests.

Handwritten musical notation on a single staff, featuring a treble clef, a key signature of two sharps (F# and C#), and a common time signature (C). The notation consists of sixteenth-note passages, with dynamic markings *f* and *p* in red ink.

Handwritten musical notation on a single staff, featuring a treble clef, a key signature of two sharps (F# and C#), and a common time signature (C). The notation includes sixteenth-note passages and rests, with a dynamic marking *f* in red ink.

*2. vezga
la señal*



+

Contravaxo

Tonadilla à seis

de los Maestros

Misson

1758

Tonadilla ad.

And. *re Poco*

Alto

ff

Minuete

poco cresc.

ff

Alto

seguid.

2 veces
ala señal

Sigueta Contradanza

