

Leg. A n. B. ~~12~~

1 2

Mus 12-1

+

Musica Leg. n.º 3.

en la Com.^a

La mas perfecta amistad

De Laserna

12-1

1^a 2^a

1 B^{is}

All.^o

The first system of the manuscript consists of five staves. The first four staves are for string instruments, each starting with a treble clef, a key signature of one sharp (F#), and a time signature of 2/4. The fifth staff is for the right hand, starting with a soprano clef, a key signature of one sharp, and a time signature of 2/4. The notation includes various rhythmic values and rests.

The second system continues the musical composition with five staves. It features a variety of rhythmic patterns, including eighth and sixteenth notes, and rests. The notation is dense and detailed, showing the intricate texture of the piece.

Acordes melo dias a cordes melo-

The third system of the manuscript consists of five staves. It includes dynamic markings such as *p* (piano) and *f* (forte). The notation continues with melodic and harmonic lines, showing the progression of the music.

Dias celebren la feliz constante union que

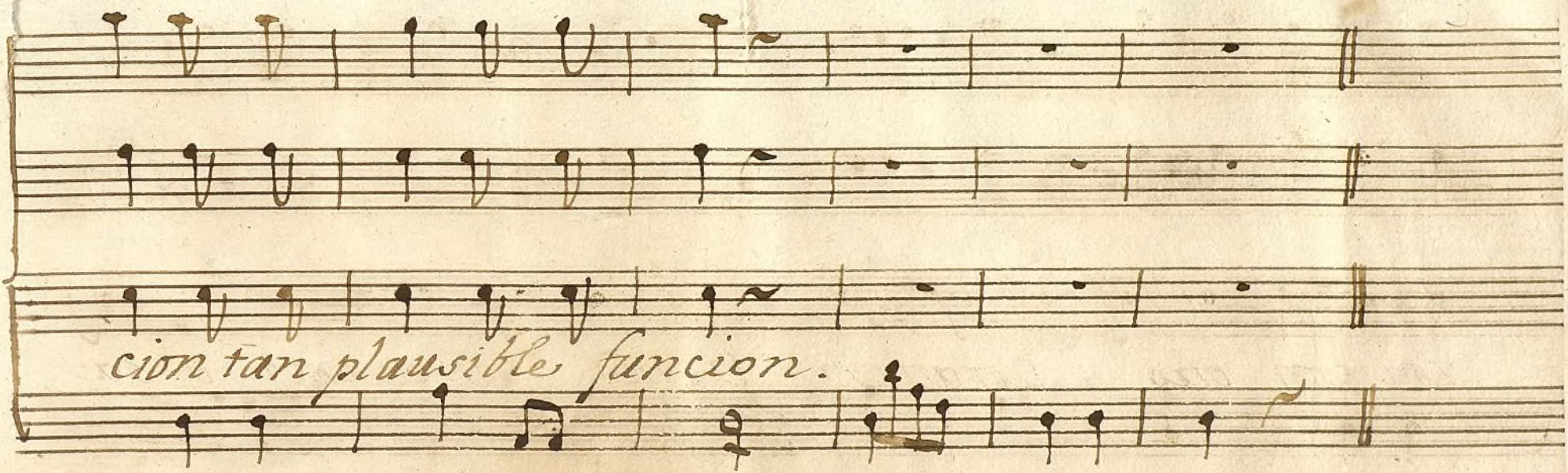
ata que liga que anuda q.^e enlaza

Un cora

65

ION con otro Corazon Venid concurrido o sa

grado himeneo a solemnizar tan plausible furr-

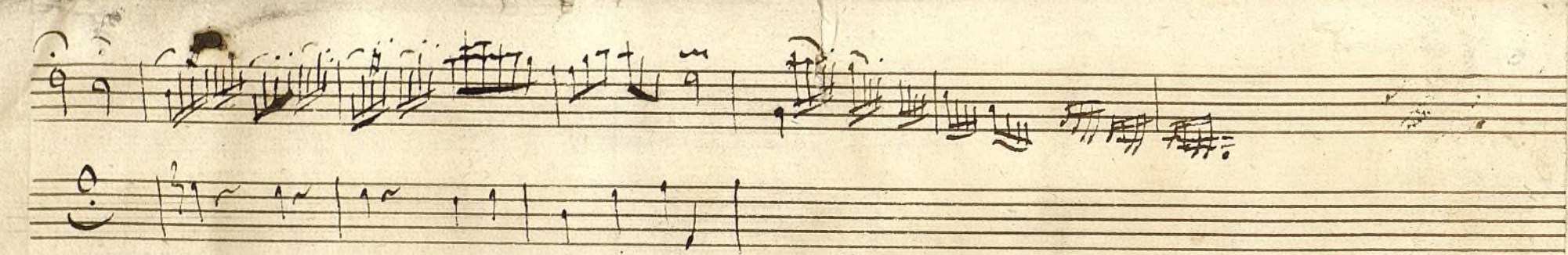


cion tan plausible funcion.

2a X.
Princesa
No es el tiempo de la dicha

Handwritten musical score on aged paper, featuring ten staves of music and lyrics in Spanish. The lyrics are: "yel de la des di cha igual q. e el q. en q. e el que en q. e en la cha la dicha es igual es trai dor es traïdor en la des di cha". The notation includes various note values, rests, and dynamic markings such as "A" and "Cres.". The paper shows signs of age, including staining and a torn left edge.

A page of aged, yellowed paper with ten horizontal musical staves. The top three staves contain handwritten musical notation. The first staff has a treble clef and a key signature of one flat. The notation includes several measures with notes, rests, and bar lines. The second and third staves also contain some notation, including a double bar line. The remaining seven staves are empty. The paper shows signs of age, including foxing and a small tear at the top center.



Mus 12-1

t clave.

Com.^a

La mas perfecta amistad

De Laserna.

1.ª 2.ª

All.^o

Handwritten musical score for the first system, featuring five staves with treble clefs, a key signature of one sharp (F#), and a 2/4 time signature. The notation includes rests and rhythmic markings.

Handwritten musical score for the second system, featuring five staves with treble clefs, a key signature of one sharp (F#), and a 2/4 time signature. The notation includes various rhythmic figures and notes.

Acordes melo-

dias acordes melo dias Ce lebren la cons.

liz constante Union que da que liga que a

nuda y en laza un corazón con otro cora-

zón venid concurrid o sa prado Jimenco

a solemni zar ton plausible) funcion tar

This block contains the first system of a handwritten musical score. It consists of four staves. The top three staves contain a vocal line with various note values and rests. The lyrics are written in a cursive hand across the second and third staves. The fourth staff contains a bass line with notes and rests.

This block contains the second system of the handwritten musical score, consisting of four staves. The top three staves appear to be for a piano accompaniment, with notes and rests. The bottom staff contains a bass line with notes and rests.

All.^{to}

No es el

tiempo de la dicha y el de la des di-cha i

qual q.^o el q.^o en la di-cha es leal -

The image shows a page of handwritten musical notation on aged, yellowed paper. The score is written in brown ink and consists of several staves. At the top left, the tempo marking 'All.^{to}' is written. The music is in a 3/4 time signature, indicated by a '3' over a '4' in the first staff. The key signature has one sharp (F#). The lyrics are written in a cursive hand below the notes. The text includes 'No es el', 'tiempo de la dicha y el de la des di-cha i', and 'qual q.^o el q.^o en la di-cha es leal -'. There are some corrections and markings in the score, such as a '2' over a note in the fifth staff and a '3' over a note in the sixth staff. The paper shows signs of age, including some staining and wear at the edges.

es trai dor — es en la desdi

cha.



t

Mus 12-1

Violin 1.º Com.ª La mas perfecta amistad

1.ª p.ª

All.^o

Princesa

2.^a 2.^a

Alto

3/4

crei

f

The image shows a handwritten musical score on aged paper. The title 'Princesa' is written at the top. Below it, the tempo 'Alto' and the time signature '3/4' are indicated. The score consists of six staves of music. The first staff begins with a treble clef and a key signature of one sharp (F#). The music is written in a cursive, handwritten style. The first four staves contain the main melody, with various note values and rests. The fifth staff includes dynamic markings 'crei' and 'f'. The sixth staff concludes the piece with a double bar line and a fermata over the final note.

Violin 1^o Com.^a La mas perfecta amistad

Allegro *All.^o* $\text{8} \# \# 2$

Princesa

2a Xa

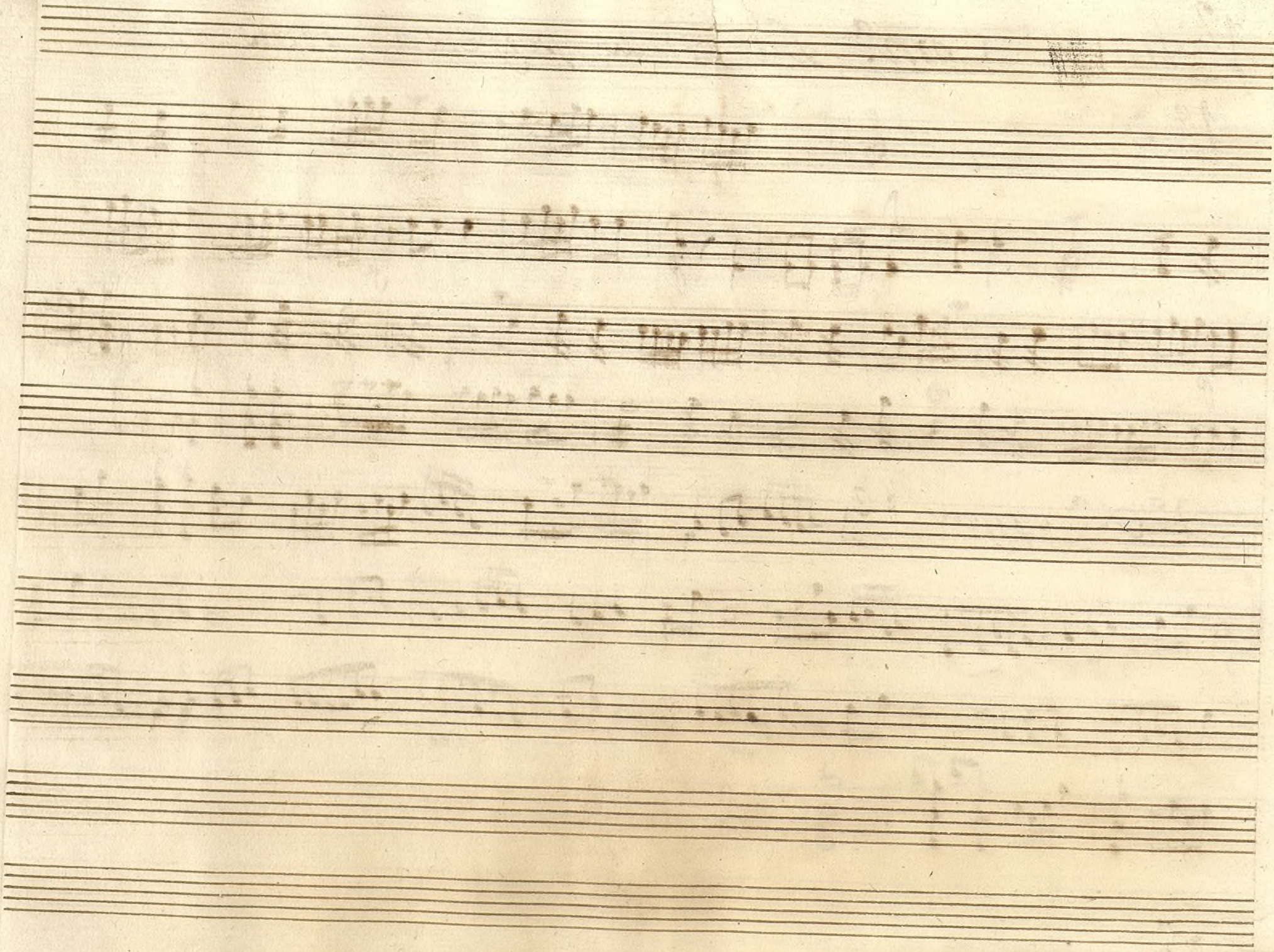
Alleg.^{to}

Handwritten musical score for 'Princesa' on aged paper. The score is written on six staves. The first staff contains the title 'Princesa' and the tempo marking 'Alleg.^{to}'. The second staff begins with a treble clef, a key signature of one sharp (F#), and a 3/4 time signature. The music consists of several staves of notes, including a prominent melodic line in the second staff and a more active accompaniment in the third and fourth staves. The fifth staff features a 'Cres.' (Crescendo) marking. The sixth staff concludes with a double bar line. The paper shows signs of age, including some staining and wear at the edges.

Violin 2^o Con.^a La mas perfecta amistad.

1^a X^a *All.^o* $\frac{2}{4}$

2^a X^a *All.^o* $\frac{3}{4}$



Violin 2^o Com^a La mas perfecta amistad

1^a X^a

All^o

2^a X^a

All.^o $\text{F}\sharp$ 9/8

cres.

Oboe 1.º Corn.ª La mas perfecta amistad

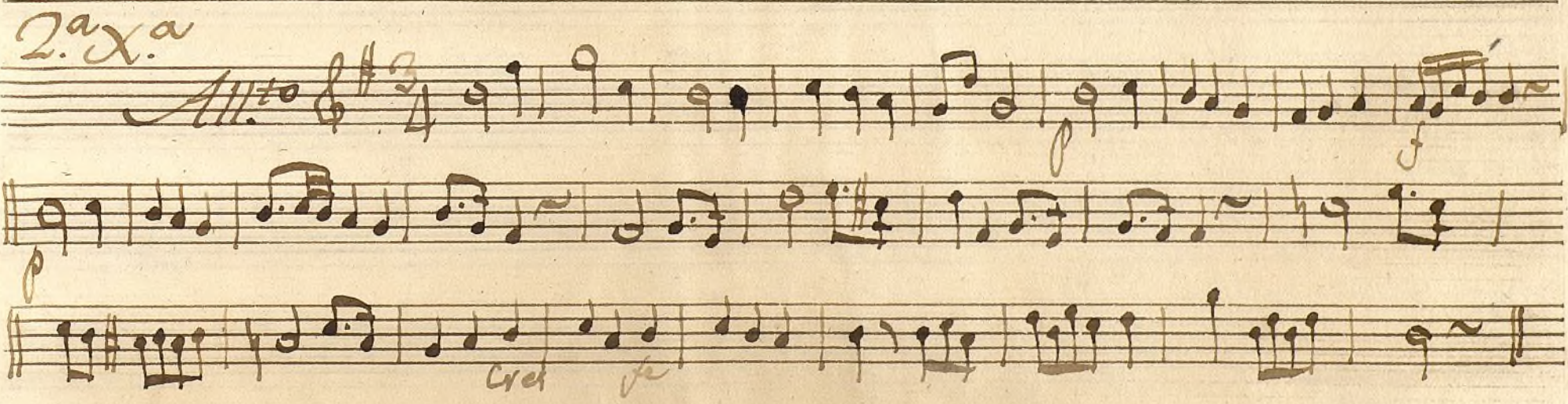
1.ª X.ª *All.º* $\text{G} \# \text{F} \# \text{C}$ $\frac{2}{4}$

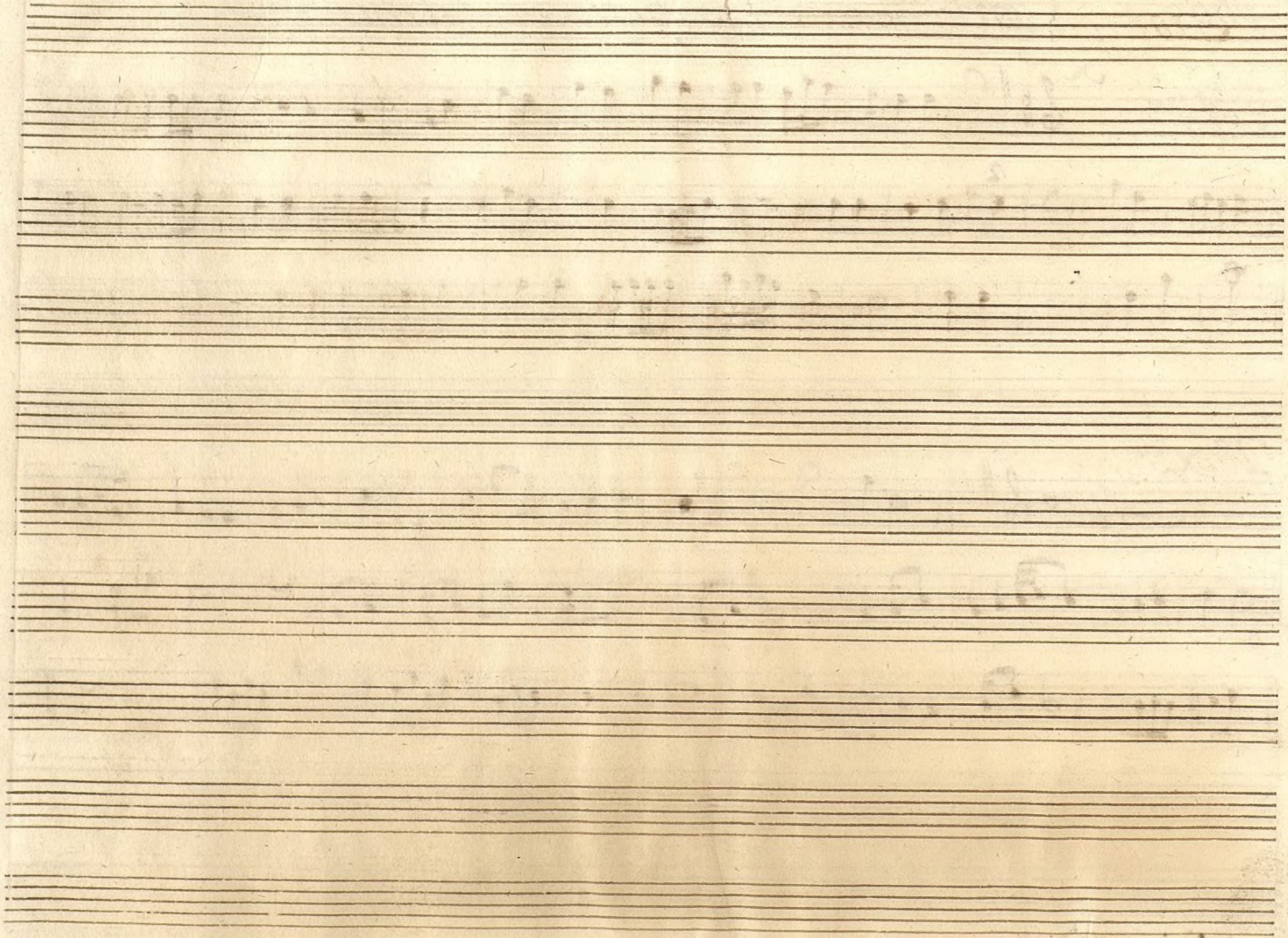
2.ª X.ª *All.º* $\text{G} \# \text{F} \# \text{C}$ $\frac{3}{4}$



Flute 2^a Com^a la mas perfecta amistad.

1^a X^a
All^o 

2^a X^a
All^o 



Trompa 1.^a Corn.^a La mas perfecta amistad

1.^a X.^a

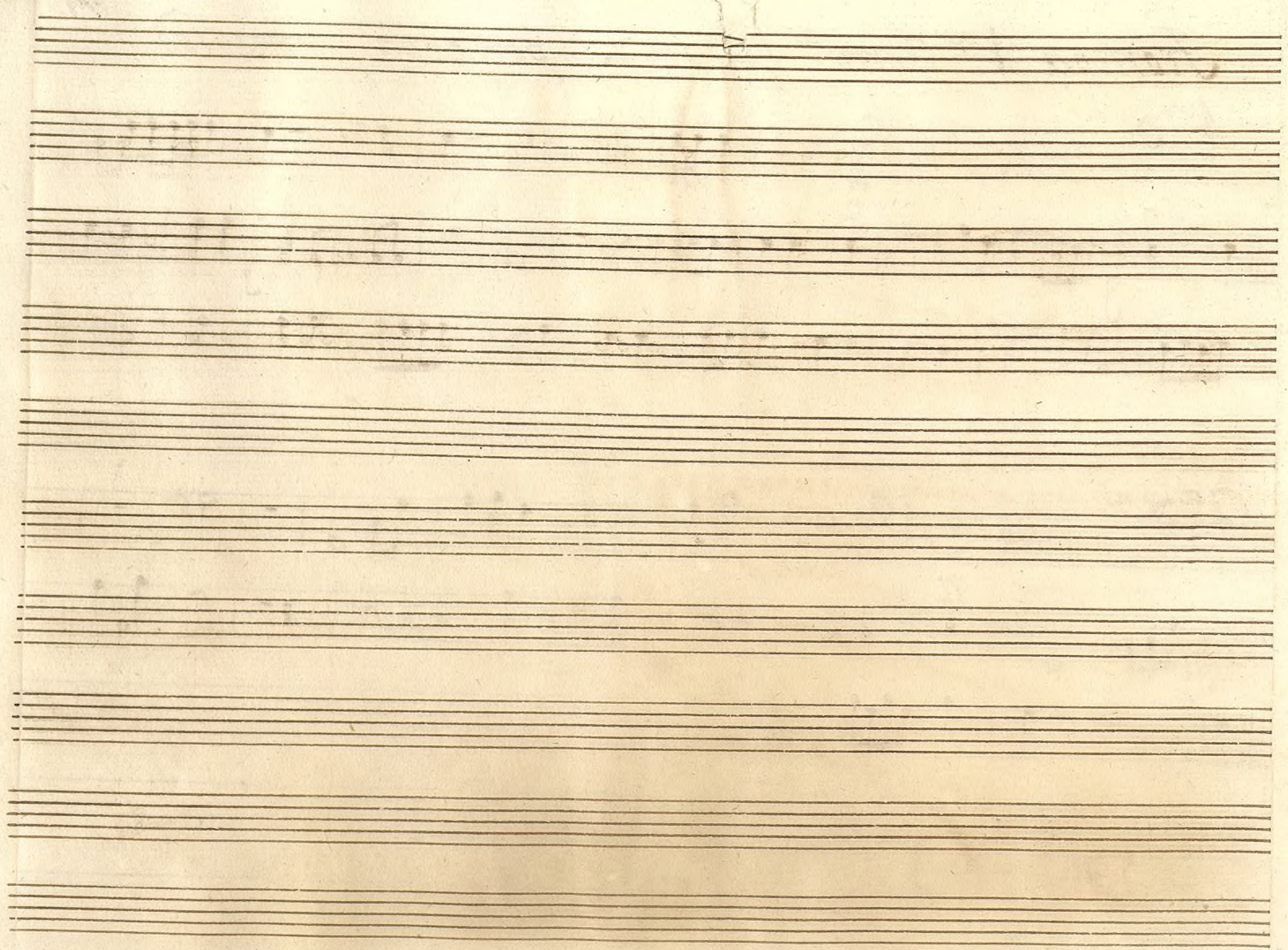
All.^o

Handwritten musical notation for the first system, including a treble clef, a key signature of one sharp (F#), and a 2/4 time signature. The notation consists of three staves with various notes, rests, and dynamic markings like 'f' and 'p'.

2.^a X.^a

All.^o

Handwritten musical notation for the second system, including a treble clef, a key signature of one sharp (F#), and a 3/4 time signature. The notation consists of three staves with various notes, rests, and dynamic markings like 'f' and 'p'.



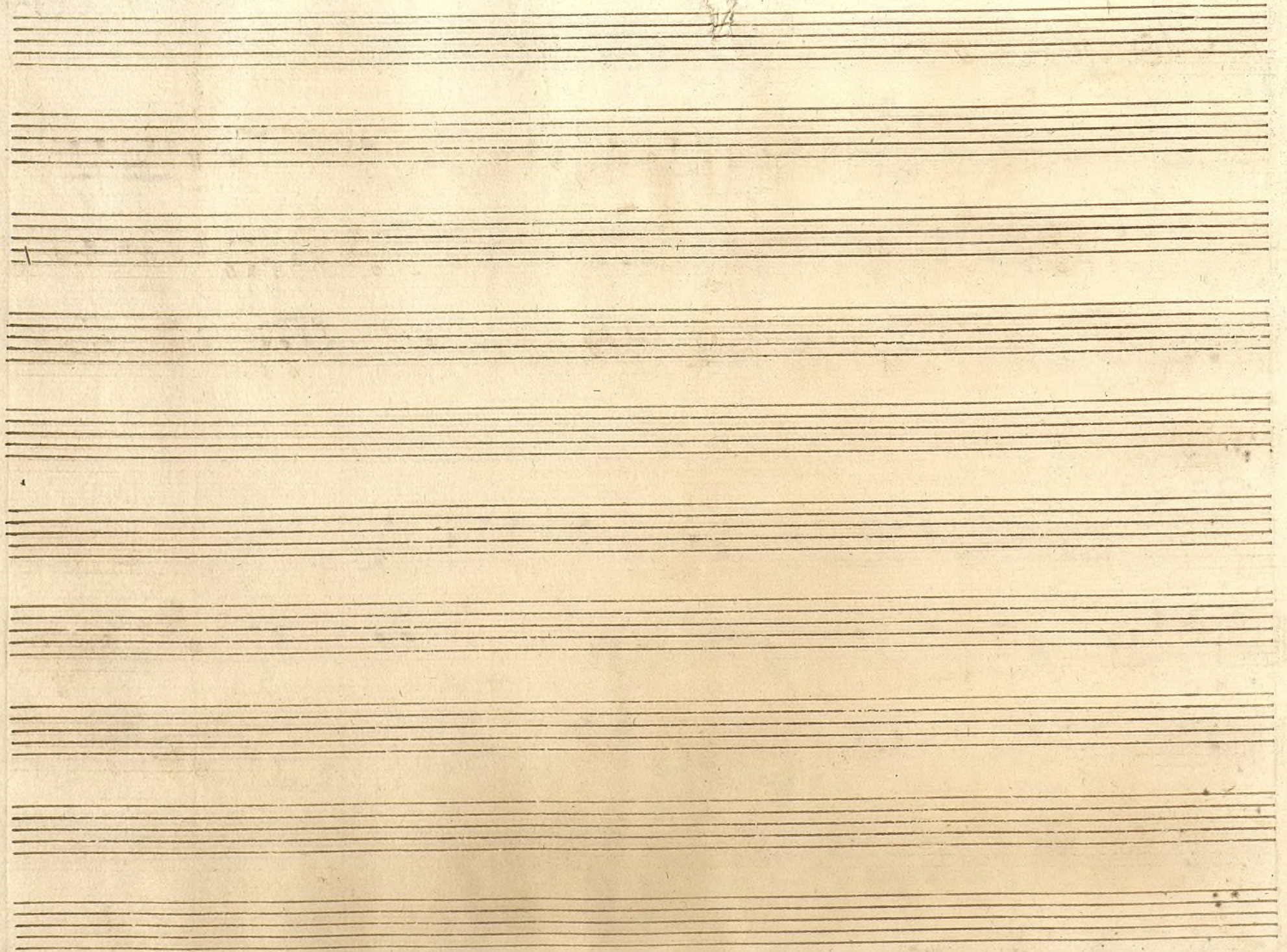
Trompa 2^a Com.^a la mas perfecta amistad

1^a xa

All.^o *E:* *||* *2* *2*

2^a xa

All.^o *E:* *||* *3* *2* *1*



Bajo Corn^a La mas perfecta amistad

1^a X^a

Handwritten musical notation for the first system, including a treble clef, a key signature of one sharp (F#), and a 4/4 time signature. The notation consists of a single melodic line with various note values and rests.

2^a X^a

Handwritten musical notation for the second system, including a treble clef, a key signature of one sharp (F#), and a 3/4 time signature. The notation consists of a single melodic line with various note values and rests. A 'Cres.' marking is present below the staff.

12

