

Leg.^o ~~A~~ N.^o ~~10~~ ~~10~~

22-6

+

Comedia

en un Acto

La Niña trocada

De Leg.^o 3.^o N.^o 76

Laseana

Vailete

The first system of handwritten musical notation consists of four staves. The top two staves are for a treble clef instrument, and the bottom two are for a bass clef instrument. The key signature is three sharps (F#, C#, G#) and the time signature is 6/8. The notation includes various rhythmic values such as eighth and sixteenth notes, and rests. There are several double bar lines with diagonal slashes through them, indicating where the music should be cut off or repeated.

The second system of handwritten musical notation consists of four staves. The top two staves are for a treble clef instrument, and the bottom two are for a bass clef instrument. The key signature is three sharps (F#, C#, G#) and the time signature is 6/8. The notation includes various rhythmic values such as eighth and sixteenth notes, and rests. There are several double bar lines with diagonal slashes through them, indicating where the music should be cut off or repeated.

Con vailes y juegos nuestro amor divierte de los dos a

mantes la union lisonge — ra todo sea ale gria

gozo bulla y fiesta y Vivar las Amas edades e

ternas y vivan las Amas e edades eter-

nas edades eter nas.

Vervos
yal segno
dos mas

Seg.⁵

Para Bailar

el amor ino

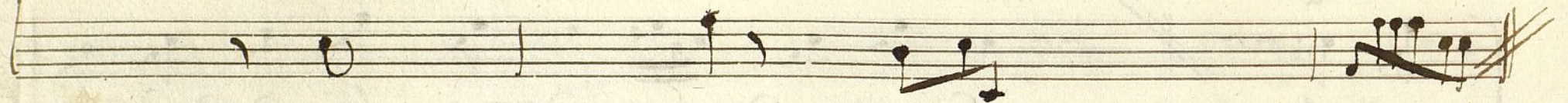
cente.

Se estienda en todos y la edad de los
Sean eternas sus amantes ca

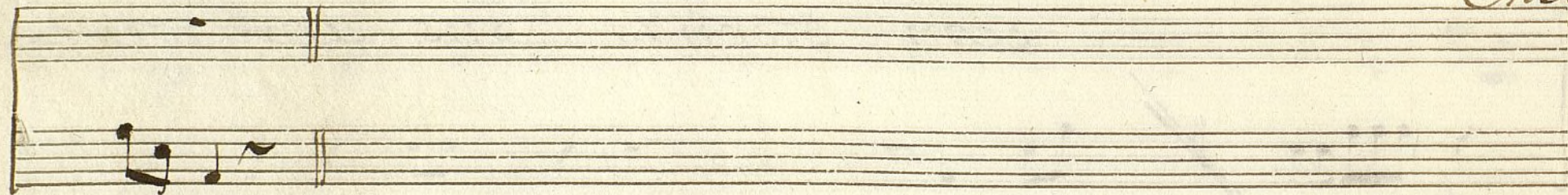
tiempos ole ole se Vivan los novios y
ñicias ole ole se y sus fi nozas sta



la edad de los tiempos vivan los novios —
amantes ca ricias y sus finezas —



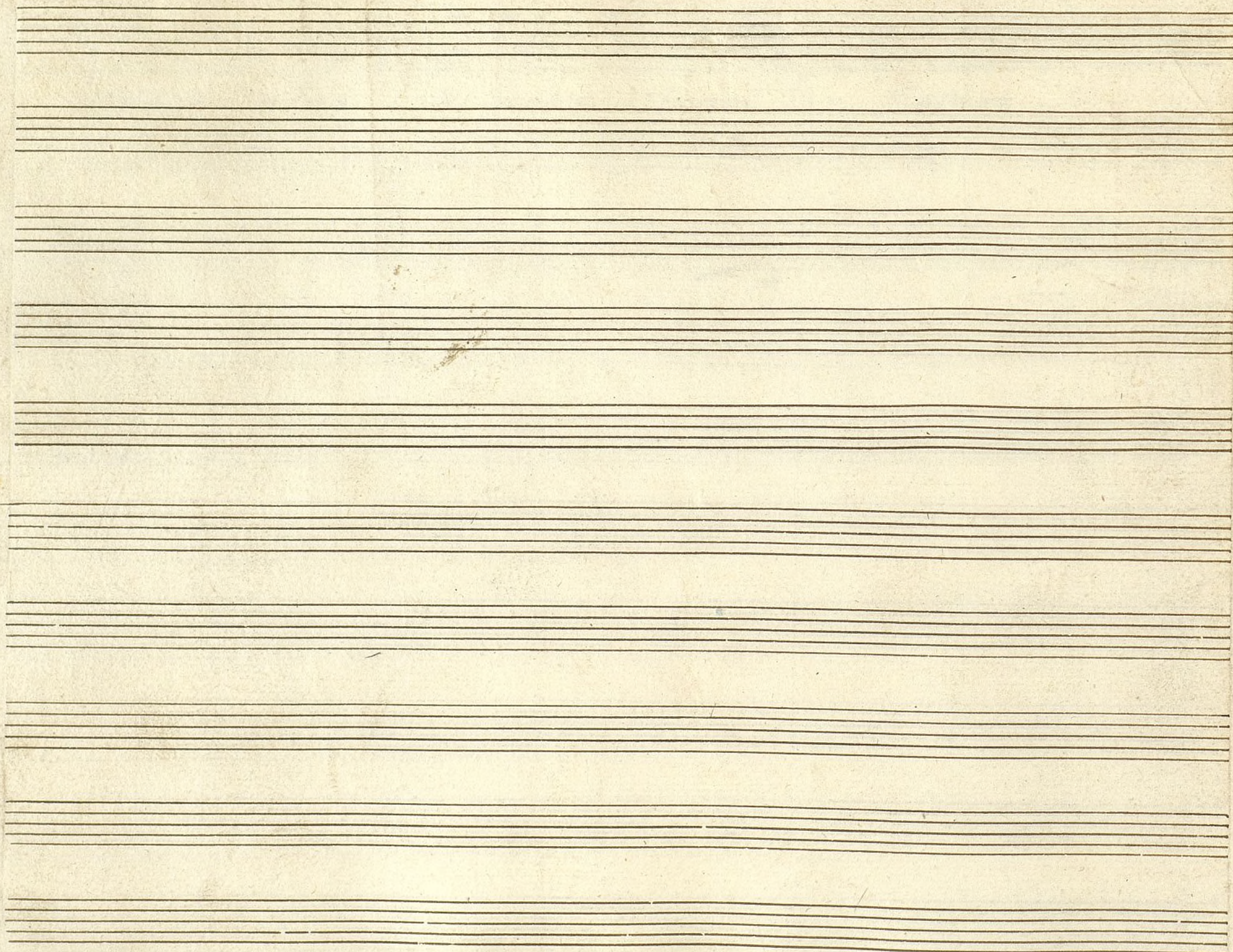
Allegro



ono

4

5.



Ayuntamiento de Madrid

Violin 1.º Com.^a La Nina trocada. Monjuí

Variete.

Versos y al seño dormas.

Seq.⁵ Para Vairax
Alleg.^{to} G major 3/4

Allegro

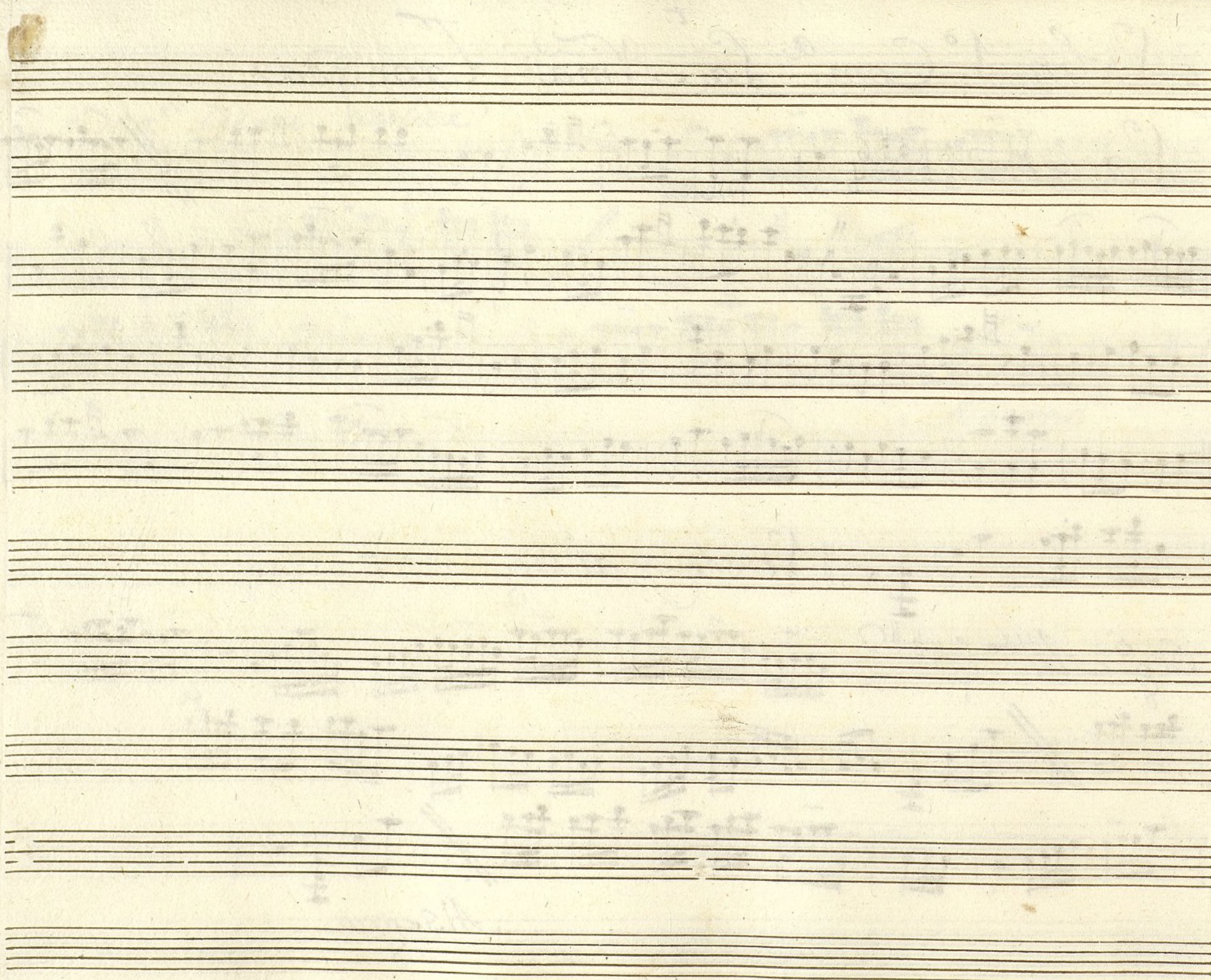
Violin 1.º Com.^a La Niña Trocada.

Vailete

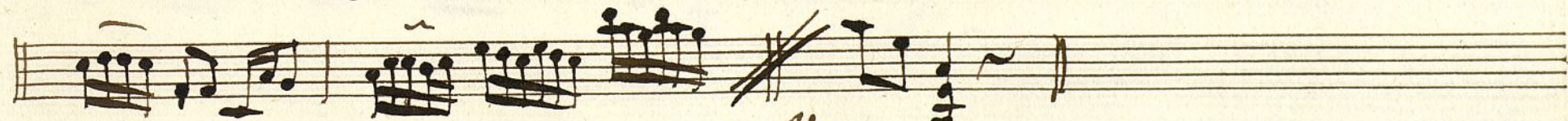
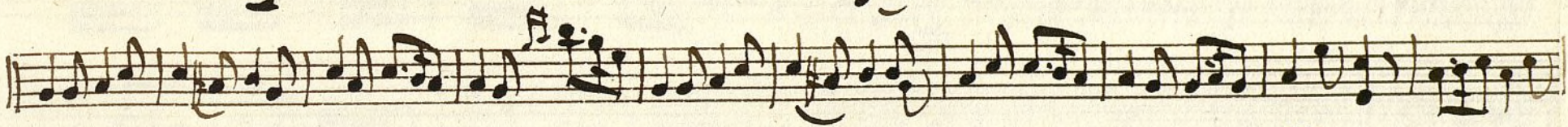
Versos y al Segno dos mas

Seg. All.^o

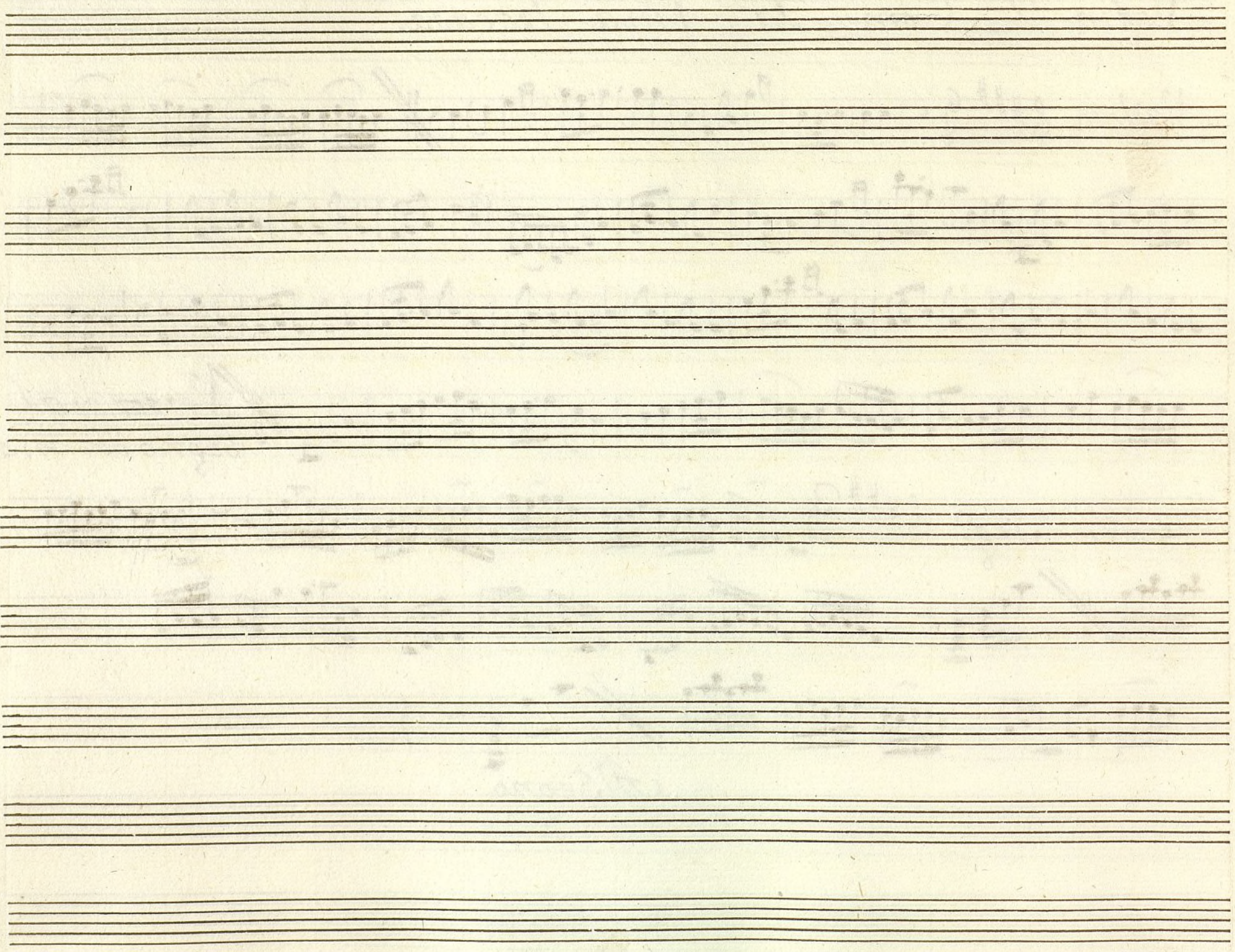
Al Segno



Violin 2.^o Com.^o La Vna ^t tocada.



Al Segno



Violin 2.^o Com.^a La Niña trocada.

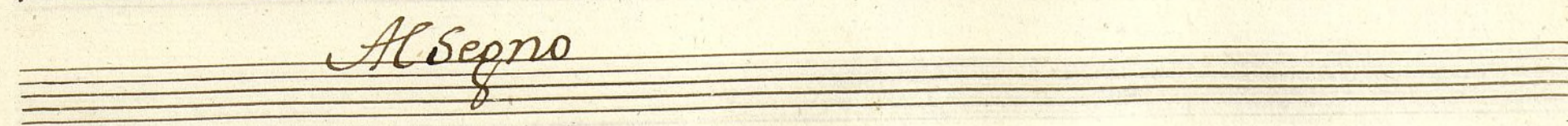
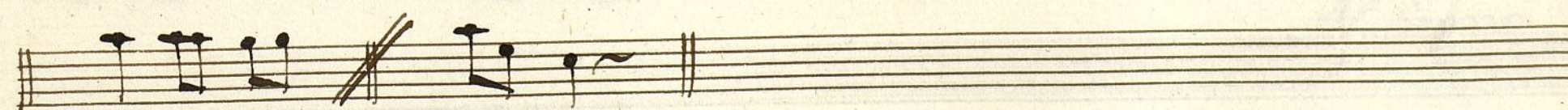
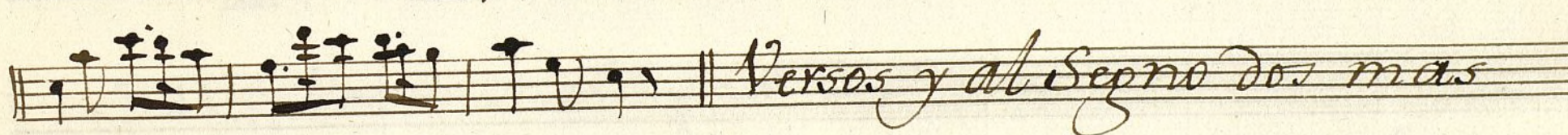
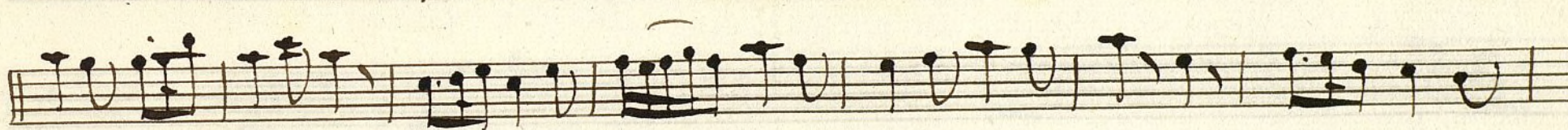
Vailete

Versos y
Allegro dos mas.

Seq. 5
Allto 8 $\sharp\sharp\sharp$ 3

Al Segno.

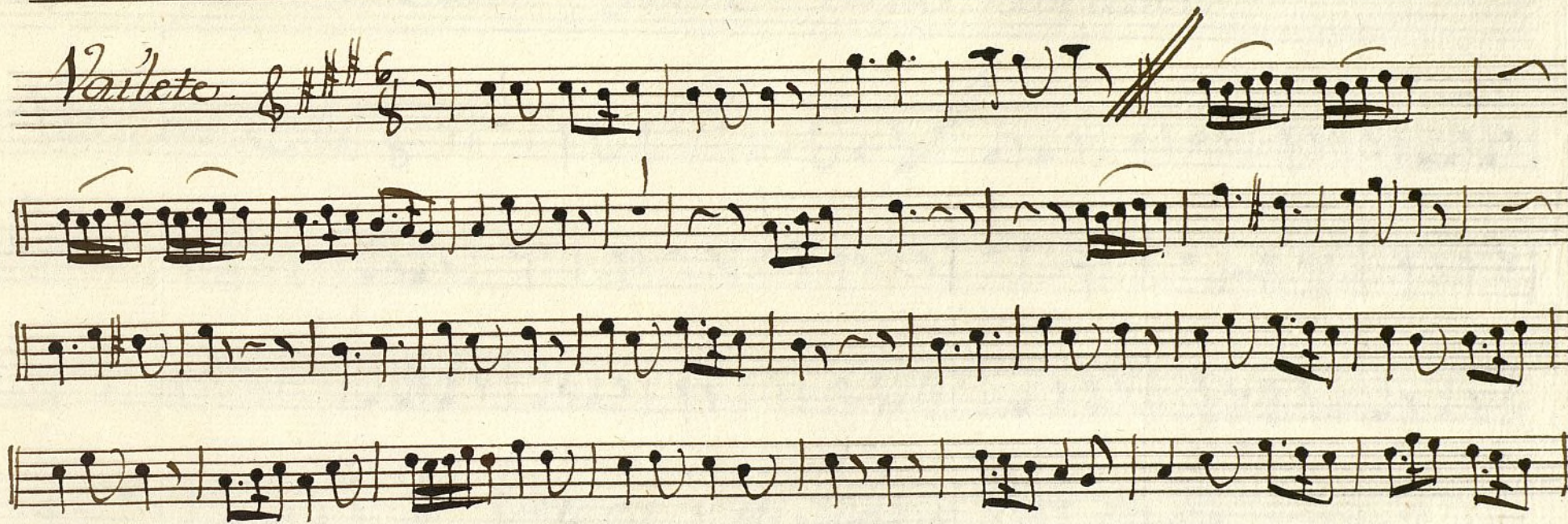
Oboe 1.º Com.^a La Niña trocada. †



The image shows ten horizontal musical staves, each consisting of five lines. The staves are arranged vertically and contain handwritten musical notation. The notation is very faint and difficult to read, but it appears to be a sequence of notes and rests. The paper is aged and yellowed, with some visible texture and slight discoloration. The handwriting is in dark ink, and the overall appearance is that of an old, handwritten musical score.

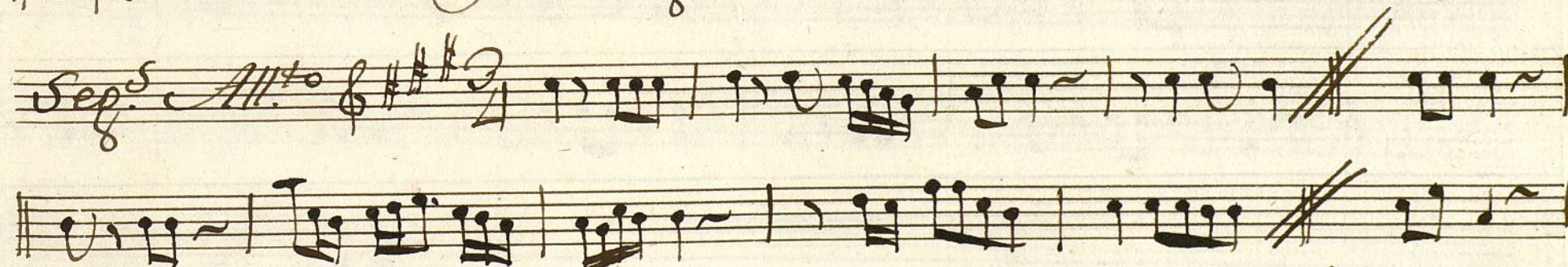
Oboe 2^o Com^a La Niña trocada.

Vaivete. $\text{G} \text{ major} \quad \frac{6}{8}$

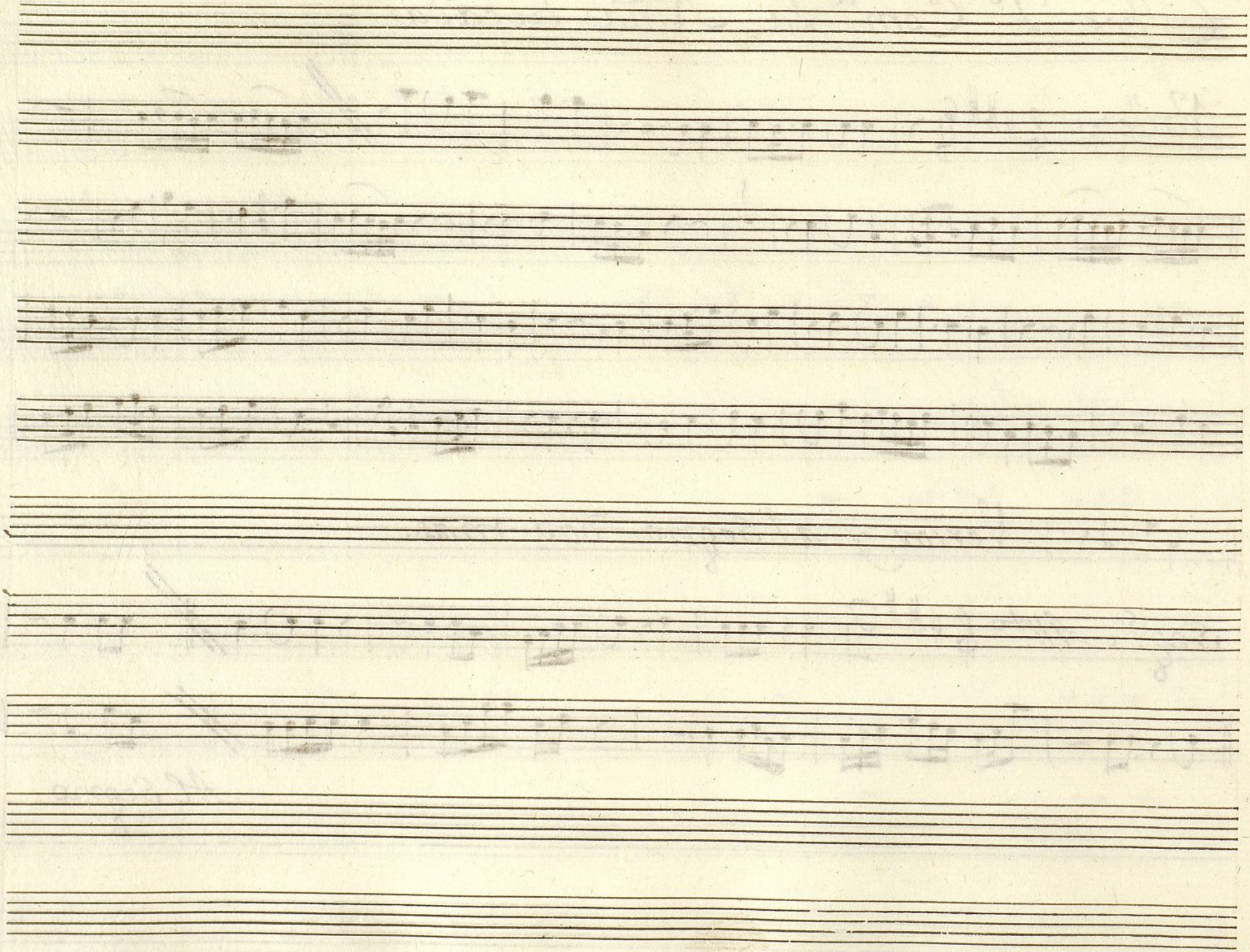


Versos y al Segno dos mas.

Seg. *All.^o* $\text{G} \text{ major} \quad \frac{3}{2}$



Al Segno



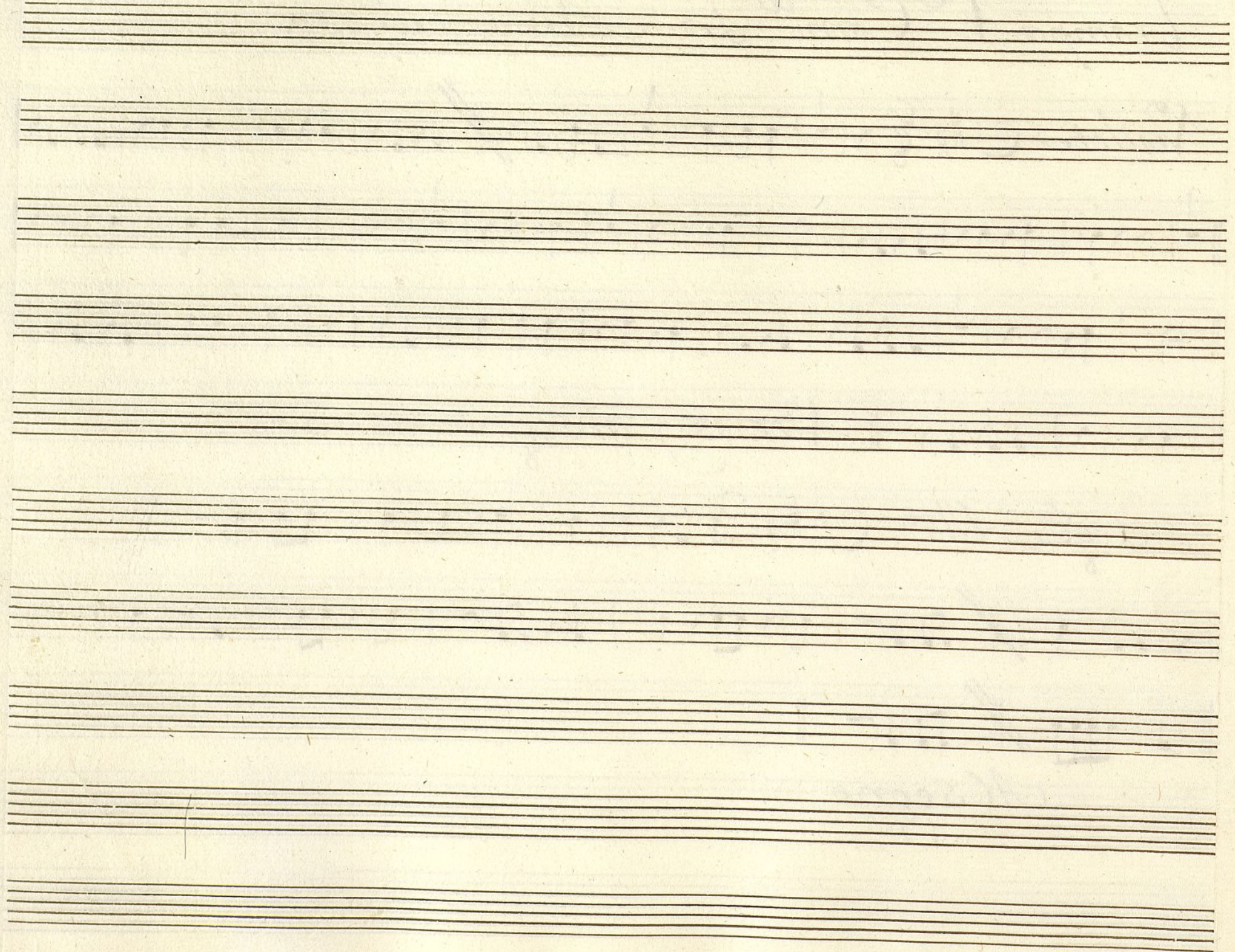
Trompa 1.^o Com.^a La Niña trocada

Vailete C: # 6/8

Versos y al segno dos mas

Seg.^o All.^o C: # 3/4

Al segno



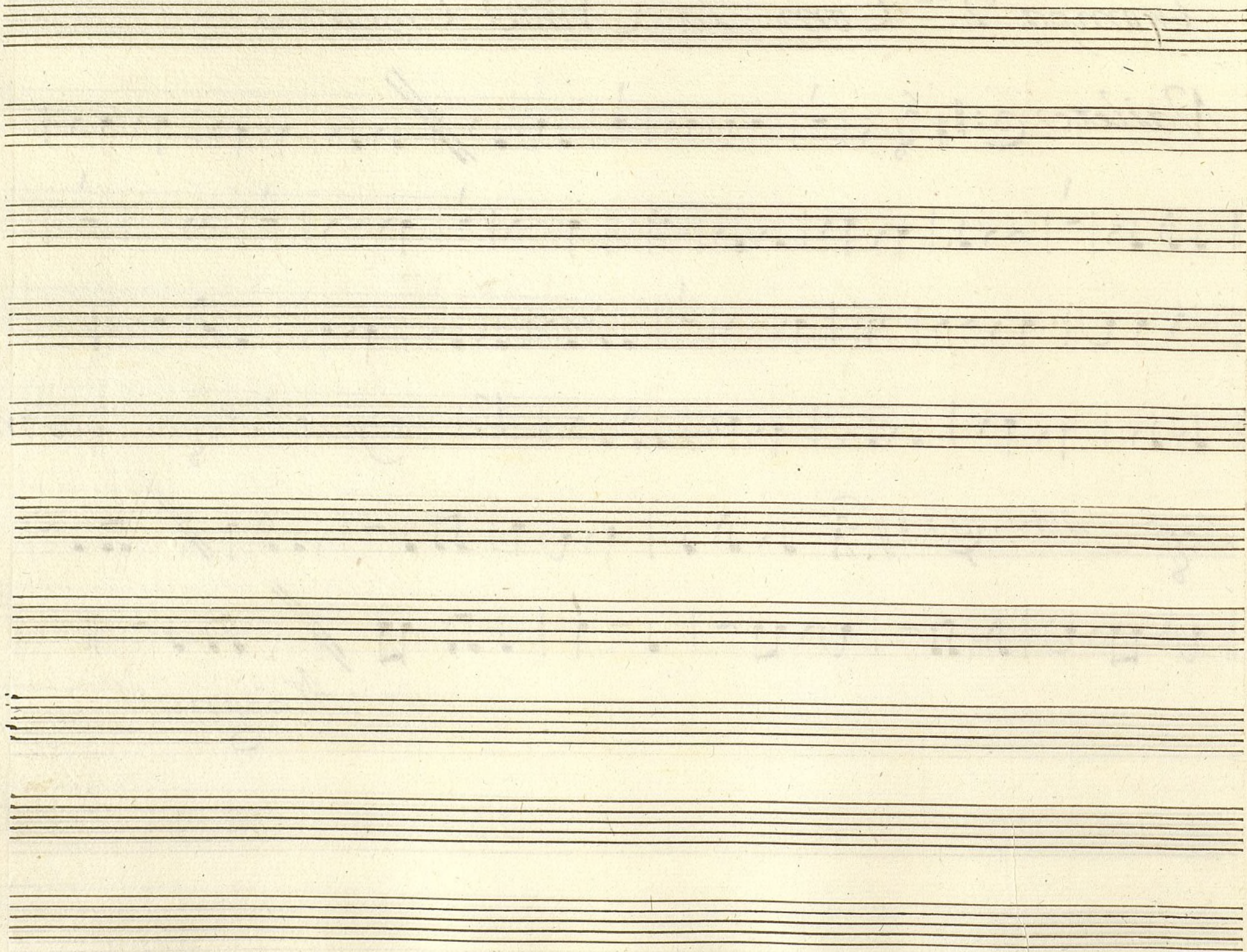
Trompa 2.^o Com.^a La Niña Trocada

Vailete $\text{C} \# \# \frac{6}{8}$

Versos y al Segno dos mas.

Seg.^o All.^o $\text{C} \# \# \frac{3}{4}$

Al Segno



Baxo Com.^a La Niña Trocada.

t

Clave.

Vailete.

Musical notation for the first staff, including a treble clef, a key signature of two sharps (F# and C#), and a 6/8 time signature. The notation consists of a series of eighth and sixteenth notes.

Musical notation for the second staff, continuing the piece with eighth and sixteenth notes.

Musical notation for the third staff, continuing the piece with eighth and sixteenth notes.

Musical notation for the fourth staff, continuing the piece with eighth and sixteenth notes.

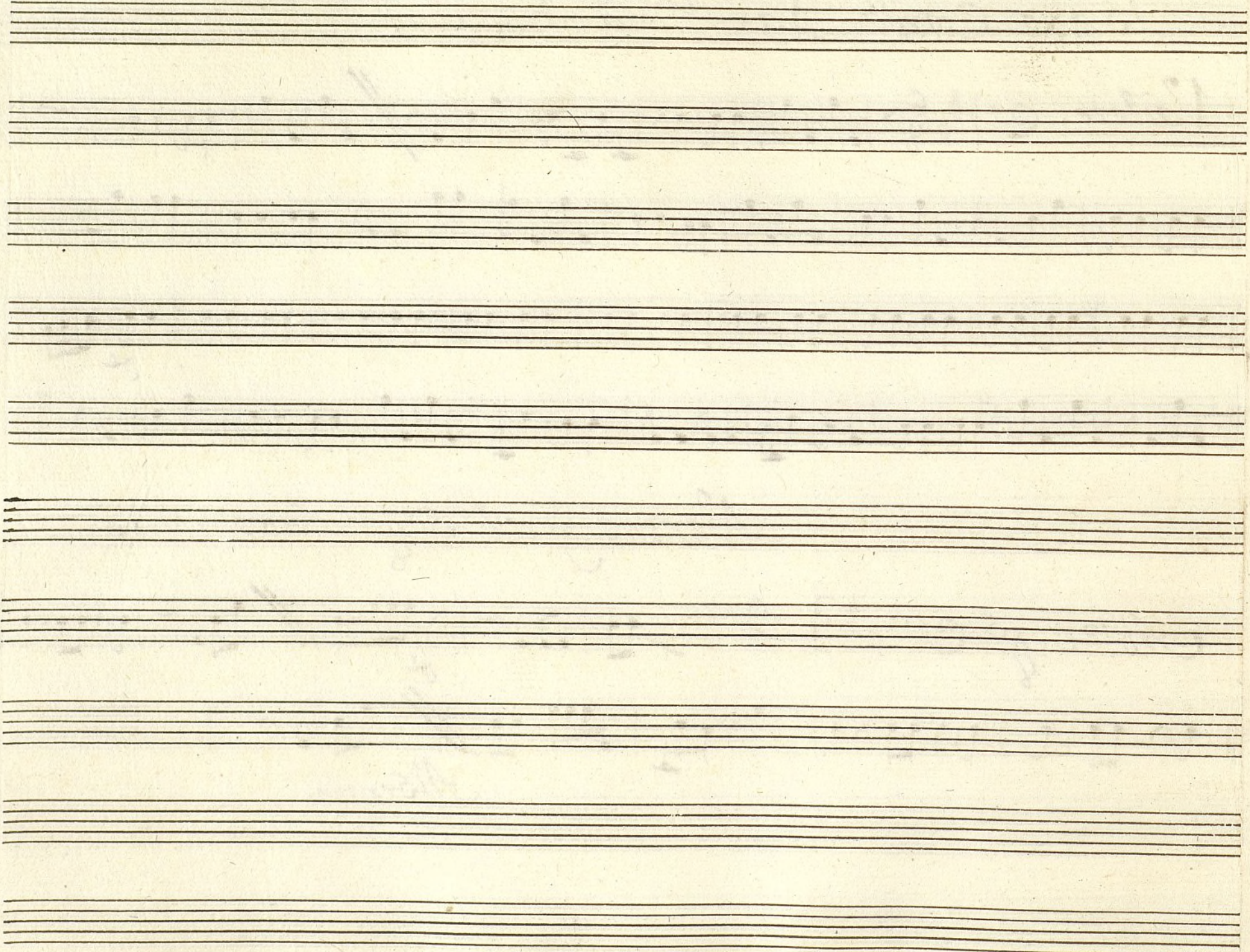
Versos y al Segno dos mas.

All.^o Seg.^o

Musical notation for the fifth staff, starting with a treble clef, a key signature of two sharps, and a 3/4 time signature. It includes a repeat sign and a double bar line.

Musical notation for the sixth staff, continuing the piece with eighth and sixteenth notes.

Al Segno.



Baxo Com.^a La Niña trocada

Vailete $\text{C}:\sharp\sharp$ $\frac{6}{8}$ Musical notation on a staff with treble clef, key signature of two sharps, and 6/8 time signature.

Musical notation on a staff with treble clef, continuing the Vailete piece.

Musical notation on a staff with treble clef, continuing the Vailete piece.

Musical notation on a staff with treble clef, continuing the Vailete piece.

Musical notation on a staff with treble clef, including the instruction *Versos, y Repite al segno dos mas.*

Seq. *All.^o* $\text{C}:\sharp\sharp$ $\frac{3}{4}$ Musical notation on a staff with treble clef, key signature of two sharps, and 3/4 time signature.

Musical notation on a staff with treble clef, continuing the Seq. piece.

Al Segno.

