

Ms 720-20 (A)

1) Sonata á solo

Para Guitarra de 5 órdenes,  
voz y bajo

Por D.<sup>o</sup> Antonio Abreu.



All. comodo

A handwritten musical score for guitar, consisting of ten staves. The music is written in a single system. The notation includes a treble clef, a 2/4 time signature, and a key signature of one sharp (F#). The tempo marking "All. comodo" is written at the top left. The score features a variety of rhythmic patterns, including eighth and sixteenth notes, and rests. There are several dynamic markings, such as "f" (forte) and "p" (piano), and articulation marks like accents and slurs. The handwriting is in dark ink on aged, slightly yellowed paper. The music appears to be a single melodic line for guitar.

A handwritten musical score consisting of ten staves. The notation is dense, featuring many sixteenth and thirty-second notes, often beamed together in groups. The music is written in a single system across the ten staves. There are various musical symbols and markings throughout, including dynamic markings such as *tr* (trillo), *f* (forte), and *p* (piano), as well as articulation marks like accents and slurs. The paper shows signs of age, with some staining and a small dark spot near the bottom center of the page.

*Largo*

A handwritten musical score for guitar, consisting of ten staves of music. The notation is dense and includes various rhythmic values, accidentals, and fingerings. The piece is marked "Largo" at the beginning. The score is written in a single system across ten staves. The music features a complex rhythmic structure with many sixteenth and thirty-second notes, often beamed together. There are several instances of fingerings (e.g., 6, 2, 3, 4, 5) and dynamic markings (e.g., *mf*, *mfz*). The paper is aged and shows some staining, particularly at the bottom right corner.

Ayuntamiento de Madrid



Ayuntamiento de Madrid

2

Sonata de seis Ordenes

por

D<sup>n</sup> Antonio Abreu.

All.  
Condo

A handwritten musical score on aged paper, consisting of ten staves. The notation is dense and complex, featuring a variety of rhythmic values, including sixteenth and thirty-second notes, as well as rests and accidentals. The score begins with a treble clef, a key signature of one sharp (F#), and a 2/4 time signature. The music is written in a cursive, historical style, with some ink bleed-through from the reverse side of the page. The overall appearance is that of a personal manuscript or a composer's draft.



This image shows a page of handwritten musical notation, likely a manuscript. The page is numbered '2' in the top right corner. It contains ten staves of music, each with a treble clef. The notation is dense and complex, featuring a variety of note values, rests, and dynamic markings. The ink is dark, and the paper shows signs of age, including some staining and discoloration. The music appears to be a single melodic line, possibly for a violin or flute. The notation includes many slurs, ties, and accents, suggesting a highly technical and expressive piece. The overall appearance is that of a historical musical score.

*Cantabile.*

A handwritten musical score for guitar, consisting of six staves. The music is written in treble clef with a key signature of two sharps (F# and C#) and a 6/8 time signature. The notation includes a variety of note values, rests, and articulation marks. Several 'x' marks are placed above notes, indicating natural harmonics. An '8' is written above the first staff, likely referring to the eighth fret. The manuscript shows signs of age, with some staining and fading, particularly in the lower half of the page.

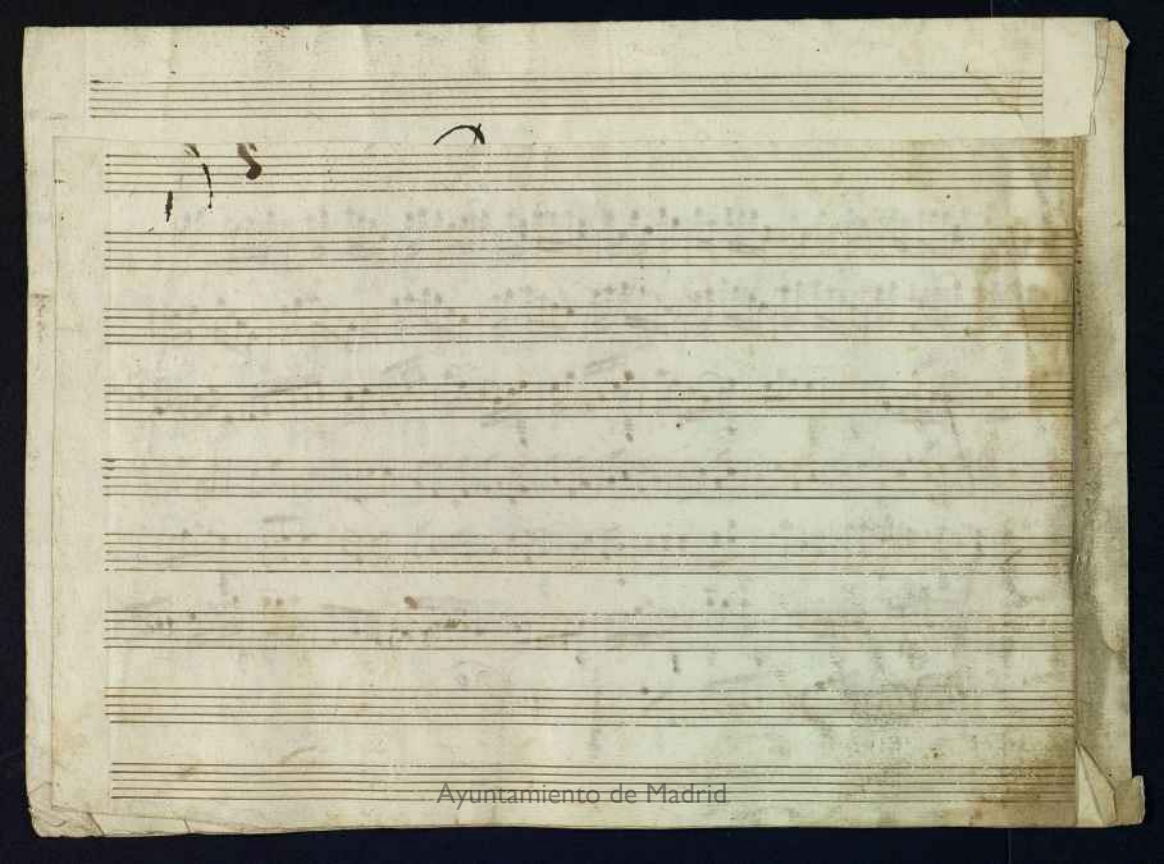


*Presto.*

A handwritten musical score on aged paper, featuring eight staves of music. The tempo is marked 'Presto.' in a cursive hand at the top. The notation includes treble clefs, a 3/8 time signature, and various rhythmic values such as eighth and sixteenth notes, often beamed together. The music is dense and appears to be a single melodic line. There are some corrections and markings throughout, including a large 'X' over the first few notes of the first staff and various small annotations. The paper shows signs of age, with some staining and wear at the edges.

A handwritten musical score consisting of seven staves. The notation is dense and complex, featuring many beamed notes, slurs, and dynamic markings. The music appears to be a single melodic line. The staves are numbered 1 through 7 from top to bottom. The notation includes various rhythmic values, including eighth and sixteenth notes, and rests. There are also some larger, more ornate notes or symbols interspersed throughout the piece. The handwriting is in dark ink on aged, slightly yellowed paper.

Ms. 720-20.2



Ayuntamiento de Madrid



Sonata de Guitarra

de 6. ordenes

Por D.<sup>o</sup> Ant.<sup>o</sup> Abreu

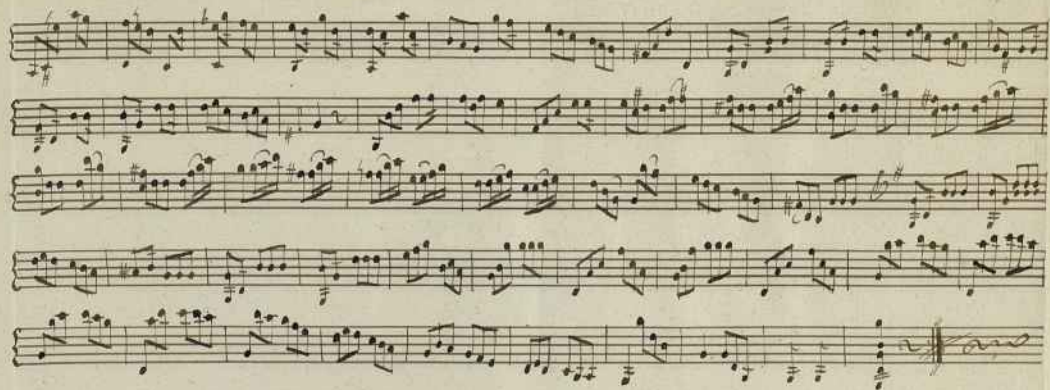
A handwritten musical score on aged, stained paper. The score consists of ten staves of music, arranged vertically. The notation is dense and includes various musical symbols such as clefs, notes, rests, and ornaments. The paper shows signs of age, including water damage and discoloration, particularly on the left side. The handwriting is in black ink, and the overall appearance is that of an antique manuscript.



A handwritten musical score consisting of ten staves. The notation is dense and includes various musical symbols such as notes, rests, and dynamic markings. The paper shows signs of age, including staining and discoloration. The score appears to be a single melodic line, possibly for a violin or flute, with some complex rhythmic patterns and slurs.

*Adagio*

*Rondo*



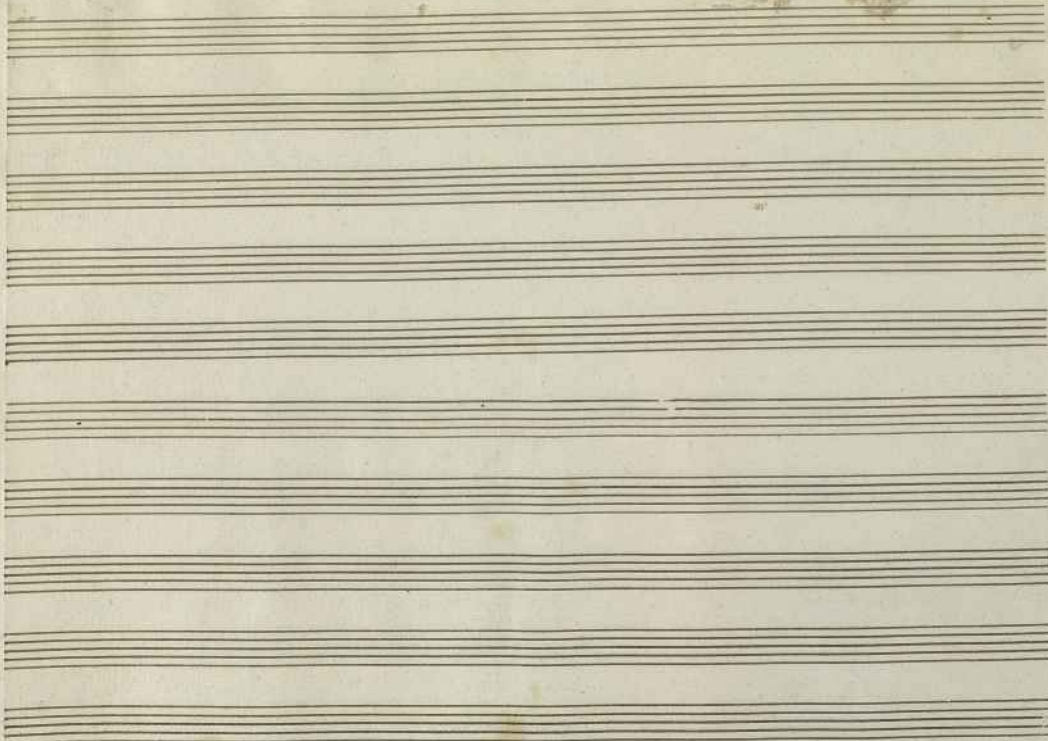
Ayuntamiento de Madrid



Ayuntamiento de Madrid



Ayuntamiento de Madrid



Ayuntamiento de Madrid

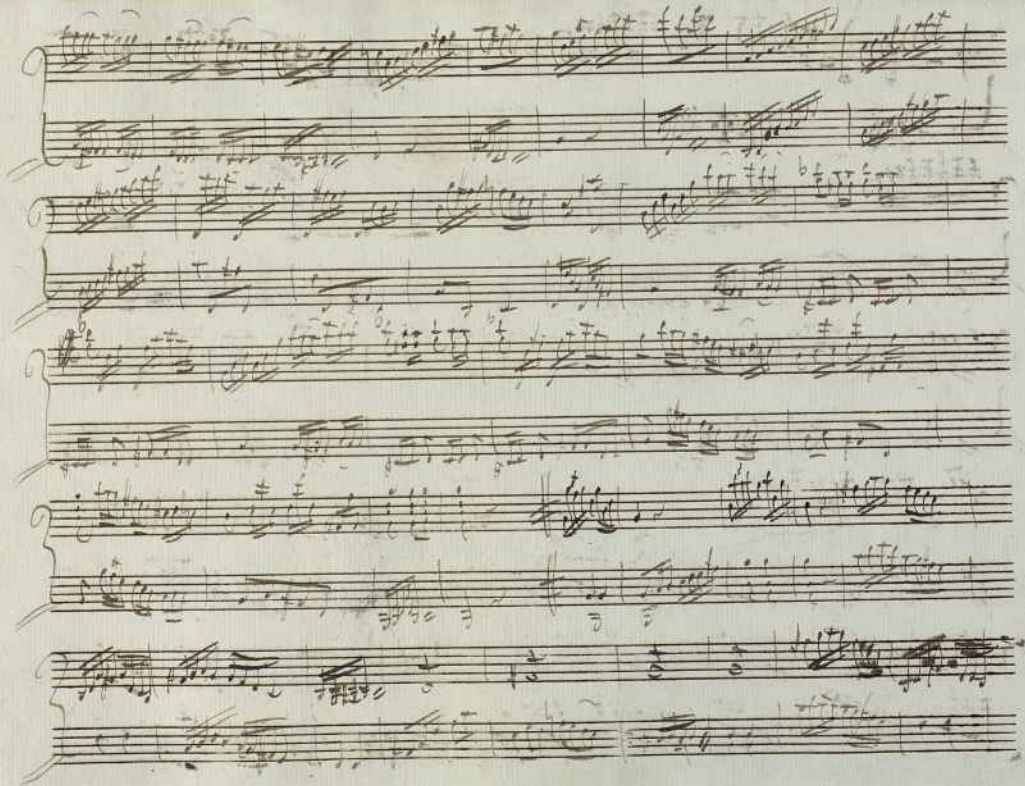
*San de guitarra.*

(W)

2

A handwritten musical score for guitar, consisting of ten staves. The notation is dense and includes various rhythmic markings, such as 'tr' (trills) and 'acc' (accents), as well as dynamic markings like 'f' (forte) and 'p' (piano). The score is written in a cursive, historical style. The first staff begins with a treble clef and a key signature of one flat. The notation is somewhat obscured by ink bleed-through from the reverse side of the page.

ms  
720-20(4)



Ayuntamiento de Madrid



A handwritten musical score on aged, yellowed paper. The score consists of approximately 12 staves of music, arranged in pairs. The notation is dense and includes various rhythmic values, accidentals, and dynamic markings. There are several instances of heavy scribbling and corrections, particularly in the middle section of the score. The handwriting is in dark ink, and the paper shows signs of age and wear.

A handwritten musical score on ten staves. The notation includes various rhythmic values, accidentals, and dynamic markings. The second staff has a '2' below it. The fifth staff has a circled section with the text 'Empieza en la ultima oja' written below it. The sixth staff has a circled section with 'Vivo' written above it. The seventh staff has 'f' markings above it. The eighth staff has 'f' markings above it. The ninth staff has 'f' markings above it. The tenth staff has 'f' markings above it.

A handwritten musical score on aged paper, consisting of ten staves. The notation is dense and includes various musical symbols such as notes, rests, and dynamic markings. The score is written in a cursive, historical style. The first staff begins with a treble clef and a key signature of one sharp (F#). The music is written in a single system across the ten staves. There are some corrections and scribbles throughout the piece, particularly in the lower staves. The paper shows signs of age, including discoloration and some staining.

Ayuntamiento de Madrid

Handwritten musical score on ten staves. The notation includes various notes, rests, and dynamic markings. The score is divided into sections by double bar lines. The first two staves are marked with a large '1a' and a '2a' above them. The remaining staves are marked with a '2a' on the left. The notation is dense and appears to be a complex piece of music, possibly a symphony or a chamber work. There are some corrections and scribbles throughout the score.

Ayuntamiento de Madrid

repite lequid  
el rano, trocador  
y acclam

Handwritten musical score on ten staves. The notation includes treble and bass clefs, a 2/4 time signature, and various musical symbols such as notes, rests, and ornaments. There are some scribbles and corrections in the middle section.

*Final*

aquí empieza el Rond

5

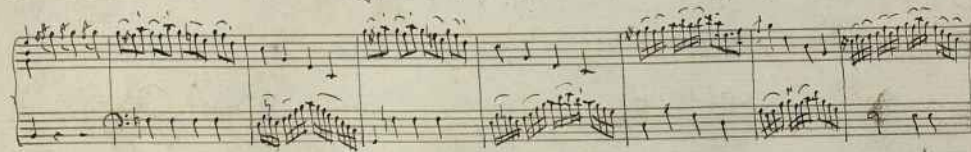
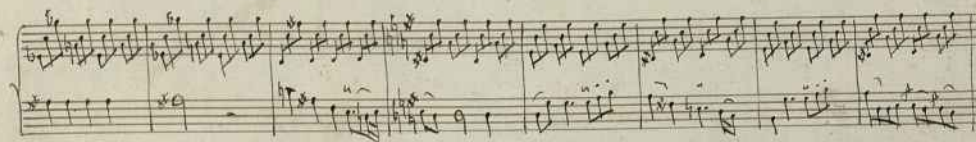
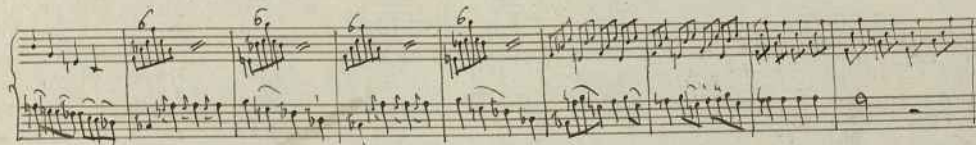
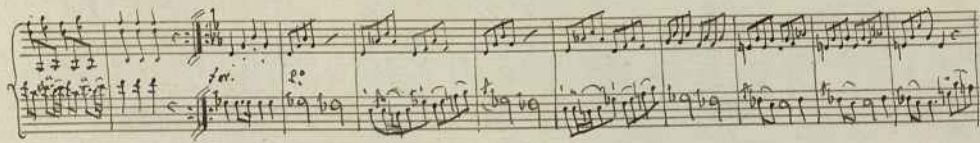
Mus 720-20(5)

Dueto para Violoncelo y Guitarra.

Guitarra  
Allo

Violoncello

Bis



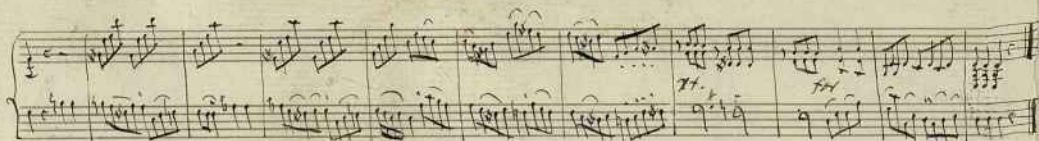


Handwritten musical score on aged paper, featuring six systems of staves. The notation includes treble and bass clefs, various rhythmic values, and dynamic markings. The score is written in a historical style, likely from the 18th or 19th century.

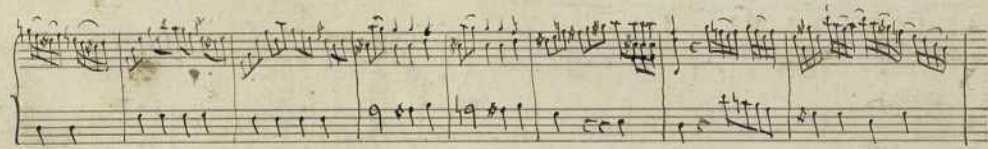
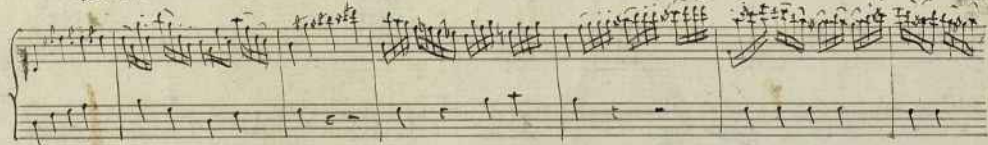
Key markings and annotations include:

- loco.* (written below the second system)
- And.<sup>te</sup> moderato* (written above the third system)
- 1.* (written above the second staff of the second system)
- Basso* (written below the second staff of the second system)

The page number *21.* is written at the bottom left of the sixth system.

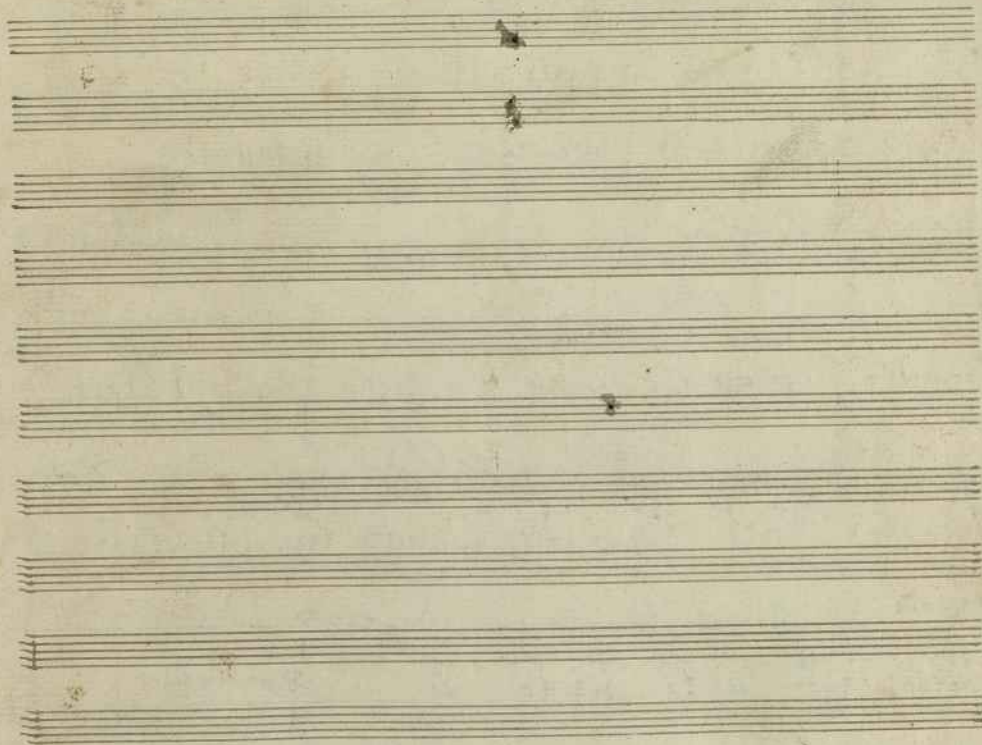


Banarion



Rondo  
Alto

Handwritten musical score for a piece titled "Rondo Alto". The score is written on six systems of staves. The first system is in treble clef, 2/4 time, with a key signature of one sharp (F#). The second system is in bass clef, 4/4 time, with a key signature of one sharp (F#). The third system is in bass clef, 4/4 time, with a key signature of one sharp (F#). The fourth system is in bass clef, 4/4 time, with a key signature of one sharp (F#). The fifth system is in bass clef, 4/4 time, with a key signature of one sharp (F#). The sixth system is in bass clef, 4/4 time, with a key signature of one sharp (F#). The score includes various musical notations such as notes, rests, and dynamic markings like "pp." and "p". The piece concludes with the word "fine." and "minore" written above the final staff. The final staff ends with a double bar line and the instruction "Al Segno." written below it.



Ayuntamiento de Madrid