

Leg.º 10. Num.º 6.

Mrz;

Musica de la Comedia
de theatro;

Julio Cesar y Caton;

Del S.ª La serna

Jornada 2^a

En la Jornada Coro.

1^a Una Marcha All.^o

Handwritten musical notation for the first three staves. The first two staves are for vocal parts (Soprano and Alto/Tenors) and the third is for the first instrumental part. The key signature is one sharp (F#) and the time signature is 2/4. The notation includes rests and rhythmic markings.

Handwritten musical notation for the second and third instrumental parts. The notation includes rhythmic markings and rests.

Sonoros Instrumentos

Handwritten musical notation for the vocal parts with lyrics. The lyrics are: "placidas con resonancias ya legres Inbenciones fes". The notation includes rests and rhythmic markings.

vivamente aplaudan el dichoso Inmenso del
 Principe y de Marcia y el cielo les Conzeda
 gusto gusto fortuna y

fa - ma for tunay fa - ma

Duo

Alleg^{ro}

Handwritten musical score for a Duo. The score is written on aged paper with some water damage. It features a key signature of one sharp (F#) and a common time signature (C). The tempo is marked 'Alleg^{ro}'. The score includes a vocal line with lyrics and a piano accompaniment. The lyrics are: "manos generosas Venid al sacro templo ve". There are also some handwritten annotations like "ra Nic ra" and "Pro" near the vocal line.

nid ve nid al da cro templo silba
ve

nid aver la llama q' en ciende y me nes que en

ciende En ciende hi m eneo Tu bay Marcia am antes a
3#

mantes en Un l'arshone - to Vin cu - lan ca

~~nos~~ a ni man a ni man a fe - tor

lad en las alas de - quez tros - de ros

implorad rendida al Nomen - supremo q: los dos es ^{que}
 los dos es
 no sos el no sos No ren largo No ren largo tiempo
 se
 que los dos es no sos
 que los dos es no sos No ren

Mus 12-3

Handwritten musical score on aged paper. The top staff contains a vocal line with notes and rests. The second staff is a vocal line with lyrics: "largo - tiem - po floren floren floren largo tiem". The third and fourth staves are piano accompaniment, featuring a wavy, scribbled pattern. The fifth staff is another piano accompaniment line with notes and rests. The bottom half of the page contains several empty musical staves.

Ayuntamiento de Madrid

Violin Primero
En la Comedia de Caton

Mus 12-3

Tornada 2^a Coro.

Allargo

Handwritten musical notation for the first system of the Tornada 2^a Coro. It features a treble clef, a key signature of one sharp (F#), and a 2/4 time signature. The notation includes several measures of music with various note values and rests.

Handwritten musical notation for the second system of the Tornada 2^a Coro. It continues the piece with similar notation and includes a 'Voz' marking above one of the measures.

Handwritten musical notation for the third system of the Tornada 2^a Coro. It includes a 'Volti' marking above the final measure of the system.

Marcha Tornada 1^a

Handwritten musical notation for the first system of the Marcha Tornada 1^a. It features a treble clef, a key signature of one sharp (F#), and a 2/4 time signature. The notation includes several measures of music with various note values and rests.

Duo

Alleg.^{ro}

A handwritten musical score for a Duo, consisting of ten staves. The notation includes various rhythmic values, rests, and dynamic markings. The first staff is marked 'Alleg.^{ro}' and begins with a treble clef and a key signature of one sharp (F#). The score is filled with intricate musical notation, including sixteenth and thirty-second notes, and rests. Dynamic markings such as 'p', 'le', 'cres.', and 'sto.' are scattered throughout the piece. The paper shows signs of age, with some staining and a small circled number '3' in the top right corner.

3

Violin Primero + en la Tornada 1^a Marcha
En la Comedia de Caton Pag. 12-3

Tornada 2^a Cro Allegro $\frac{2}{4}$

versos Volti.

Tornada 1^a Marcha $\frac{2}{4}$

Duo

Alleg^{ro}

Handwritten musical score for a Duo, consisting of ten staves. The music is written in a single system with a treble clef and a key signature of one sharp (F#). The tempo is marked 'Allegro'. The score includes various musical notations such as notes, rests, and dynamic markings. The lyrics 'le po Cre.' and 'le po le po le' are written below the first staff. The score is annotated with performance instructions: 'p' (piano), 'Cre.' (Crescendo), 'vo' (voice), and 'ff' (fortissimo). The notation includes complex rhythmic patterns and melodic lines across the ten staves.

Violin Segundo
En la Comedia de Caton

Mus 12-3

Tornada 2.^a Coro *All.^o* $\text{G}\sharp\text{A}$ $\frac{2}{4}$

Handwritten musical score for the second coros (Tornada 2.^a Coro) in Violin II. The score is written on six staves. The key signature is G major (one sharp) and the time signature is 2/4. The tempo marking is *All.^o*. The notation includes various rhythmic values, including eighth and sixteenth notes, and rests. There are some corrections and scribbles in the lower part of the score, particularly in the fifth and sixth staves.

Tornada 1.^a *Marcha* $\text{G}\sharp\text{A}$ $\frac{2}{4}$

Handwritten musical score for the first coros (Tornada 1.^a Marcha) in Violin II. The score is written on three staves. The key signature is G major (one sharp) and the time signature is 2/4. The tempo marking is *Marcha*. The notation includes various rhythmic values, including eighth and sixteenth notes, and rests. There are some corrections and scribbles in the lower part of the score, particularly in the second and third staves.

Duo

Alleg.

Handwritten musical score for a Duo, featuring ten staves of music. The score is written in a cursive style with various annotations. The first staff is marked with a treble clef, a key signature of one sharp (F#), and a common time signature (C). The tempo is marked 'Alleg.'. The music consists of a series of rhythmic patterns, including eighth and sixteenth notes, often beamed together. Annotations include dynamic markings such as 'p' (piano) and 'cresc.' (crescendo), and performance instructions like 'vov' (viva voce). The score concludes with a double bar line and repeat dots. Below the ten staves, there are four empty staves.

Violin Segundo
En la Comedia de Caton

Mus 12-3

Tornada 2^a Coro

Allegro $\text{G} \# \# \frac{2}{4}$

Tornada 1^a

Marcha $\text{G} \# \# \frac{2}{4}$

Obse Primero

Mus 123

En la Comedia de Caton

Jornada 2^a. Coro

All.^o $\text{G}\#\text{A} \frac{2}{4}$

Volli

Jornada 1^a

Marcha

$\text{G}\#\text{A} \frac{2}{4}$

solo

solo

Duo Allegro H° $\text{G}^{\#}$

p *le* *p* *tr.* *le* *p* *le* *p* *le*

p *le* *p* *p*

le *tr.* *p* *tr.* *le* *tr.* *le* *tr.*

p *tr.* *le* *tr.* *le* *tr.* *le* *tr.*

p *tr.* *le* *tr.* *le* *tr.* *le* *tr.*

p *tr.* *le* *tr.* *le* *tr.* *le* *tr.*

p *tr.* *le* *tr.* *le* *tr.* *le* *tr.*

p *tr.* *le* *tr.* *le* *tr.* *le* *tr.*

Oboe Segundo
En la Comedia de Caton

Mus 12-3

Jornada 2^a Coro. All.^o &# 2/4

Jornada 1^a Marcha &# 2/4

Duo Allegro H^{\flat} C

Handwritten musical score for Duo Allegro in C major, 2/4 time. The score consists of seven staves of music. The first staff begins with a treble clef, a key signature of one sharp (F#), and a common time signature (C). The tempo is marked 'Allegro'. The music is written in a cursive hand with various dynamics and articulations. The first staff has dynamics 'p', 'le', 'p', 'Cred.', 'le', 'p', 'le'. The second staff has 'p', 'le', 'p', 'le', 'p', 'p'. The third staff has '2', 'le', 'p'. The fourth staff has 'le', 'p'. The fifth staff has 'p', 'le'. The sixth staff has 'le', '2'. The seventh staff ends with a double bar line.

Trompa Primera
En la Comedia de Caton

Clarinet

Jornada 2^a

Coro

Alegro

$\text{G} \# \# \frac{2}{4}$

Volte

Jornada 1^a

Marcha

$\text{G} \# \# \frac{2}{4}$

solo

ritardando

Mus 12-3

Duo Alleg^{ro} $\text{C}:\sharp$

Handwritten musical notation on five staves. The first staff begins with the title *Duo Alleg^{ro}* and a key signature of one sharp (F#). The notation includes various note values (eighth, sixteenth, quarter, and half notes) and rests. The second staff includes dynamic markings such as *p* and *pp*. The third staff features a marking of *10*. The notation is written in a cursive, historical style.

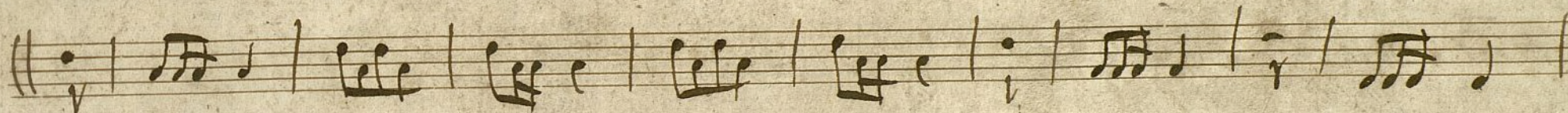
Brompa segunda +
En la Comedia de Caton

Clarines

Jornada 2^a / Coro

All.^o

$\frac{2}{4}$



Volte

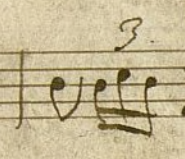
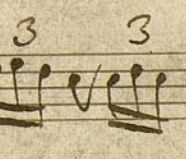
Jornada 1^a

Marcha

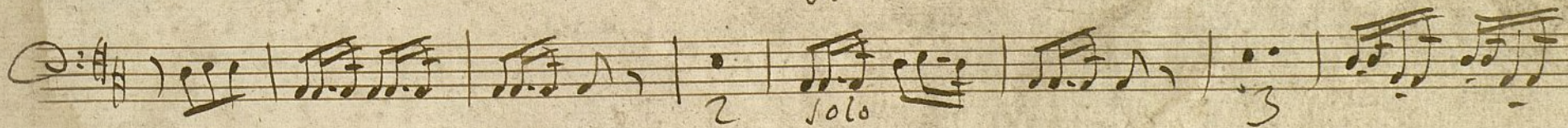
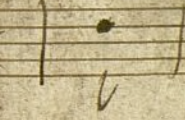
$\frac{2}{4}$



solo



Volte



solo

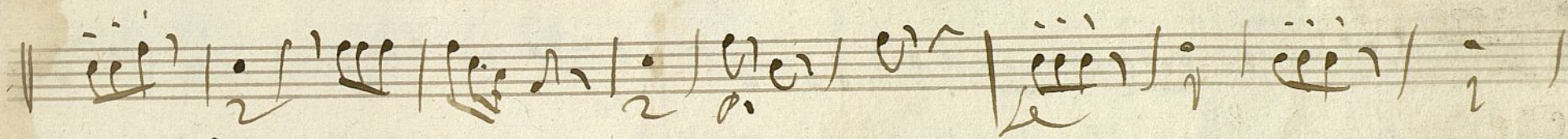


Duo Alleg^{ro} $\text{C} = \text{D}$

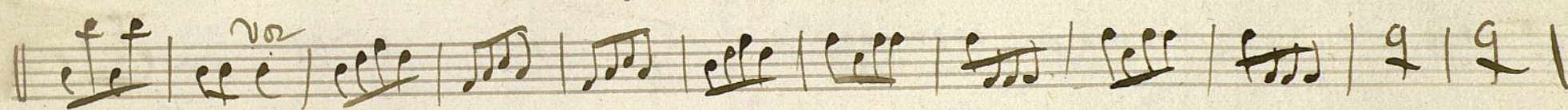
no cre de le po se
le le
le le
le le

Contrabajo;
En la Comedia de Cañon;

Jornada 1^a Marcha And.^{te} C: # 2/4



Jornada 2^a Coro Allegro C: # 2/4

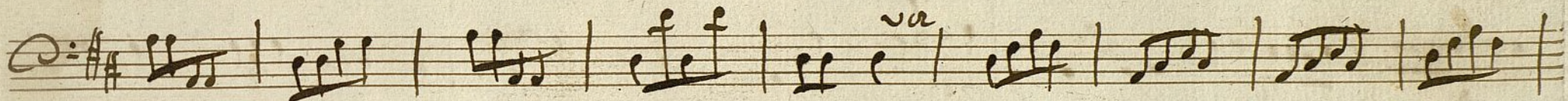


Volta

Con traveso; Dupli do
En la Comedia de Caton

Jornada 2^a Coro

All.^o $\text{C}:\sharp\sharp \frac{2}{4}$

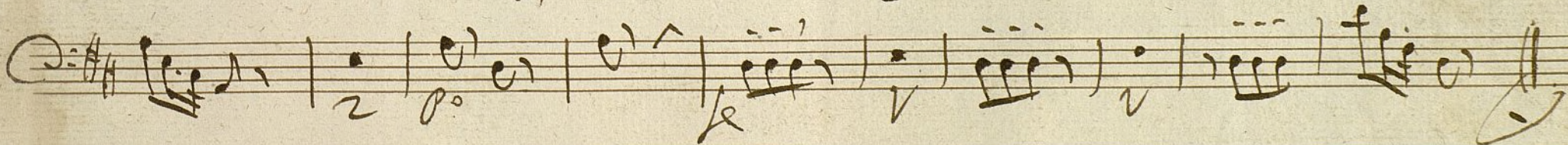
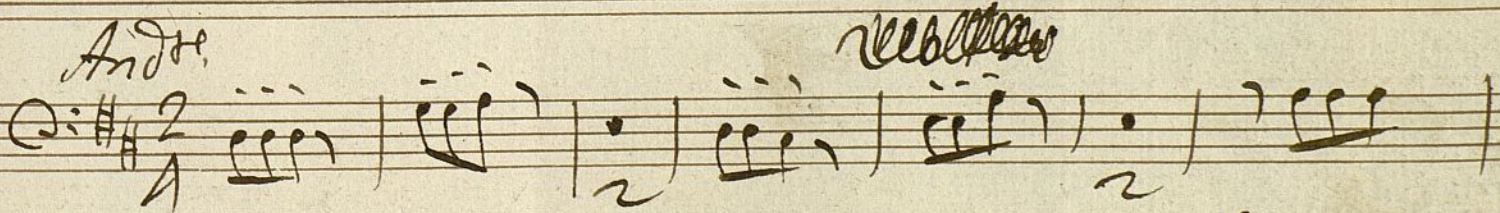


Veros

Jornada 1^a

Marcha Andte.

$\text{C}:\sharp\sharp \frac{2}{4}$



Duo

Mus. 12-3

Alleg^{ro}

Handwritten musical score for a duo, consisting of eight staves. The notation includes various rhythmic values, accidentals, and dynamic markings. Key annotations include:

- Staff 1:** *Alleg^{ro}*, *Cresc.*, *p*, *f*, *p*, *f*, *p*, *f*.
- Staff 2:** *Noz*, *p*, *f*.
- Staff 3:** *p*, *f*, *p*.
- Staff 4:** *p*, *f*, *p*.
- Staff 5:** *p*, *f*, *p*, *f*.
- Staff 6:** *p*, *f*, *p*, *f*, *p*, *f*, *p*, *f*.
- Staff 7:** *p*, *f*, *p*, *f*, *p*, *f*, *p*, *f*, *p*, *f*.
- Staff 8:** *p*, *f*, *p*, *f*, *p*, *f*, *p*, *f*, *p*, *f*, *p*, *f*.