

Leg. 39. n. 12

MUS 83-17 1

Leg. 40 n. 37

Rifatierra. 1131

t

Son. a Solo.

De Lacerda.

Oyamao. P. la quita

8/8

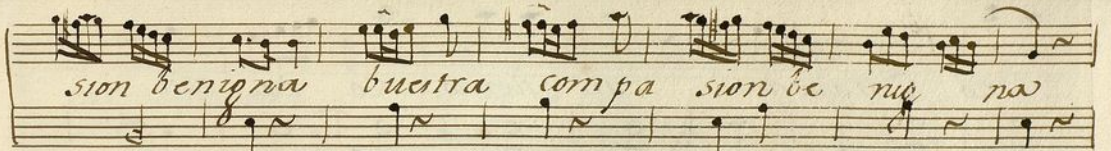
All.^o

Oy - - a manos

Pobla quitos con ardor pide Ange-

lita para complacer a todos vuestra compa-

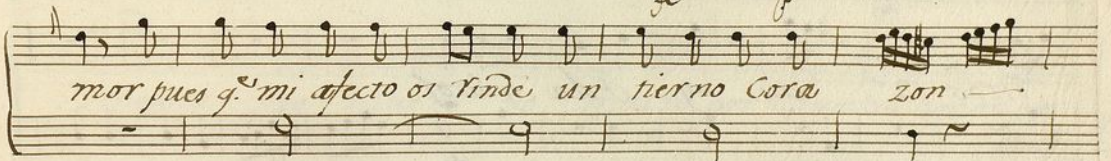
Ayuntamiento de Madrid



sion benigna vuestra compa sion be nigna



dueños del alma mia miradme con a



mor pues q. mi afecto os rinde un tierno Cora zón



un tier no Cora zón



un tierno Corazon un tier

no Corazon. un tierno Co ra zon.

un tierno Corazon - *All.^o assu* ay ay quexi

ditos 2 ay ay Pola quitos

sio gustare sio fiero temor

con tal sobresalto se turba la voz con-

Ayuntamiento de Madrid

tal sobresalto se turba la voz yo de tiro
yo fallezco yo deliro yo fallezco yo -
muero yo muero yo muero por buestro amor por
buestro amor mas buen a ni mo Ange lita
no no tengas Corte dad por q. miran los Po

Pmo
Punt. do
Arco.

lacos a las embra alas embra con pie dad

por q. miran los Polacos a las embra con pie

dad por q. miran los Polacos alas embra con piedad

alas

je

alas

fine

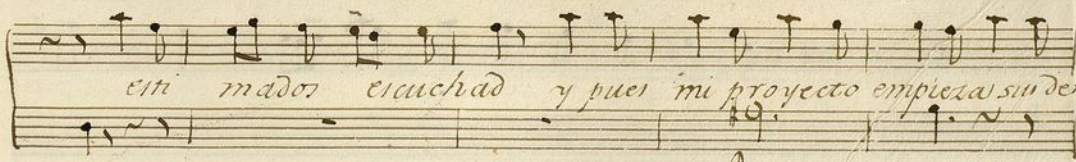
Y pues el pecho
 mio ya tiene alien to hoy al momento
 un pensamiento a proyec tar demos
 trando delas trampas la perversa false dad
 la perversa, fal - - - se dad la per-

ver sa false da da la la
era. fe fe

All.^o pola quitoi

queri ditos ado rados eiti mados eicu


chad pola quitoi ado rados



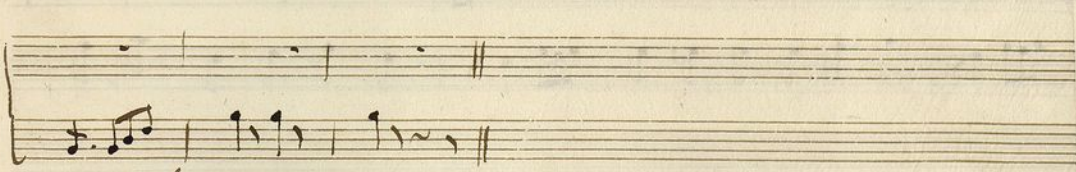
eni mador escuchad y pues mi proyecto empieza su de



fector perdonad sus de fec - tor per do



nar sus sus



Coplas.



All.°

A handwritten musical score on aged, yellowed paper. The score consists of seven staves. The first staff begins with a treble clef and a key signature of one sharp (F#). The notation includes various rhythmic values such as eighth and sixteenth notes, as well as rests. There are several instances of correction, including a large diagonal slash through the first staff and a smaller one in the second staff. The ink is dark, and the paper shows signs of age and wear.

A handwritten musical score on six staves. The notation includes various rhythmic values such as eighth and sixteenth notes, rests, and beams. There are several dynamic markings, including a 'p' (piano) in the second staff and a 'cresc.' (crescendo) in the sixth staff. A double bar line with repeat dots is present in the second staff. A fermata is placed over a note in the fourth staff. The sixth staff features a complex rhythmic passage with beamed notes and a final section that is crossed out with a diagonal line. The manuscript is written in dark ink on aged, slightly yellowed paper.

Ayuntamiento de Madrid

And^{no}

Muchas cosas como es — — — — — tas vemos q^e pa
san. vemos que pa — — san q^e no es fa
cil su cedan — — — — — sino es con tram
pa q^e no es facil su ce dan sino es con tram
tiernos p^o la — — — — — cos el fin del pens^o

miento — — escuchadme gra — — tos el fin del pensam

mien to escuchadme gratos.

All.^o Comodo.

fe

Co mo aqui cada Na ve so

la y sin re mos como agi tada Nave.

Ve so la y sin re mos como agitada

Nave. Como agi tada

Nave so la y sin re mos sola y sin re

mos como agitada Nave sola y sin re mos

sola *so* *la* *y* *sin* *temos*.
sola *y* *sin* *re* *mos* *Polacos* *de* *mi*
Vi *das* *Polacos* *de* *mi* *Vi* *da* *se* *halla* *mi* *pecho*
me *combater* *las* *das* *de* *la* *desconfi*
anza *me* *amenazaban* *las* *Tras* *de* *la* *fortuna*

Ayuntamiento de Madrid

varia me amenazan las iras dela fortuna

varia dela pero me man.

te nes en tanto temor solo la espe.

ranza de buestro favor Conce dedo quexi

ditos o mori re o mori re de do.

lor de dolor o Mas

ten pe cho infe li ce Celo y cons tan - cia

mas ten pe - - cho infe li ce ce -

loy constan cia q'ea de Uebarte al puer -

to q'ea de Uebar te al -

crea. fe

puerto dulce bo nanza dulce

g. a de llevarte al puerto dulce bo-

nanza dulce bo nanza dulce bo

nanza.

Allegro

Ayuntamiento de Madrid



Ayuntamiento de Madrid

t

Violin 1.^o

Jon^a à Solo.

All.^o

All.^o aray.

A page of handwritten musical notation on ten staves. The notation includes various rhythmic values, accidentals, and dynamic markings such as *p*, *fe*, *pp*, *mo*, and *cres.*. The manuscript is written in dark ink on aged paper. The first staff begins with a double bar line and a repeat sign. The notation is dense, particularly in the lower staves, with many beamed notes and complex rhythmic patterns. The paper shows signs of age, including some staining and a slightly worn edge on the right side.

All.

Coplas

A handwritten musical score on five staves. The first staff begins with a treble clef, a key signature of one flat (B-flat), and a common time signature (C). It contains a melodic line with various note values and rests, ending with a double bar line and a fermata. The second staff starts with a double bar line, followed by the tempo marking *Allegro 3ma.* in a cursive hand. The music continues with a more rhythmic and complex texture, featuring many sixteenth and thirty-second notes. The third, fourth, and fifth staves continue this dense, rhythmic texture. Dynamic markings such as *fe* (for *forte*) and *pp* (for *pianissimo*) are scattered throughout the score. The paper is aged and shows some staining, particularly on the left side.

All. Comodo. $\frac{2}{4}$

This page contains a handwritten musical score for ten staves. The music is written in a 2/4 time signature with a key signature of one sharp (F#). The tempo is marked 'All. Comodo.' and the dynamics range from piano (p) to fortissimo (ff). The notation includes various rhythmic patterns such as eighth and sixteenth notes, often beamed together. There are several slurs and accents throughout the piece. The markings 'p', 'ff', 'f', and 'p' are placed below the staves to indicate volume. A 'cres.' marking is visible on the sixth staff, and a 'tr.' marking is on the seventh. The paper is aged and shows some wear at the corners.

A handwritten musical score on eight staves. The notation is dense, featuring many sixteenth and thirty-second notes, often beamed together in groups. The music is written in a style typical of 18th or 19th-century manuscripts. Various dynamic markings are present, including *ff*, *f*, *crca. ff*, and *p*. The piece concludes with a double bar line, a repeat sign, and the instruction *Al Segno.*



Ayuntamiento de Madrid

t

Violin 2.^o

Ton^a a Solo.

A handwritten musical score consisting of ten staves. The notation includes various rhythmic values, accidentals, and dynamic markings. The first staff begins with a treble clef and a key signature of one sharp (F#). The score is densely written with many notes and rests. Dynamic markings such as *ff*, *f*, *fe*, *mo*, *3*, *cro.*, and *fe* are scattered throughout. The notation includes complex rhythmic patterns, including triplets and sixteenth-note runs. The manuscript shows signs of age, with some ink bleed-through and slight discoloration of the paper.

All.

Coplas *All.*

A handwritten musical score on aged, yellowed paper. The score consists of seven staves of music. The first staff begins with a treble clef and a key signature of one sharp (F#). The music is written in a cursive, historical style. The second staff features a double bar line followed by the tempo marking *Allegro* and the dynamic marking *rit. mod.*. The third staff contains a complex passage with many beamed notes and slurs. The fourth and fifth staves continue this complex texture. The sixth staff shows a change in dynamics with a *ff* marking. The seventh staff concludes the piece with a double bar line. There are several empty staves at the bottom of the page.

All. Comodo.

A handwritten musical score on eight staves. The notation includes various rhythmic values, slurs, and dynamic markings. The first staff begins with a *p* marking. The second staff has *fe* markings above and below the notes. The third staff has *fe* markings above and below. The fourth staff has a *p* marking below. The fifth staff has *fe* markings above and below, and a *crisi. fe* marking below. The sixth staff has a *p* marking below. The seventh staff has *fe* markings above and below. The eighth staff ends with a double bar line and the instruction *Al Segno.*

A page of ten blank musical staves on aged, yellowish paper. The staves are arranged vertically and are completely empty of any musical notation. The paper shows signs of wear, including a small dark spot near the center and some faint smudges. The right edge of the page is slightly uneven, suggesting it's part of a bound volume.

Ayuntamiento de Madrid

Boe 1.º Tor. a Solo.

Handwritten musical score for a horn, consisting of ten staves. The score begins with the tempo marking *All.* and a 2/4 time signature. The key signature has one sharp (F#). The notation includes various rhythmic patterns, including sixteenth and thirty-second notes, and rests. Dynamic markings such as *fe*, *lo*, *p*, and *f* are used throughout. Performance instructions include *All. araj.* (Allegretto arajante) and *Solo.* (Solo). Measure numbers 6, 12, 13, 20, and 30 are indicated. The score concludes with a double bar line.

All. G major $\frac{6}{8}$

All. G major $\frac{6}{8}$

Allegro
trei mai.

All. Comodo. G major $\frac{2}{4}$

Handwritten musical score on seven staves. The notation includes various rhythmic values, accidentals, and performance markings such as "Solo.", "Je", and "Al Segno.".

Staff 1: 2 , 3

Staff 2: 9

Staff 3: 2 , 2 , 6 , 9

Staff 4: 4 , 4 , 4

Staff 5: 2 , 3 , 3

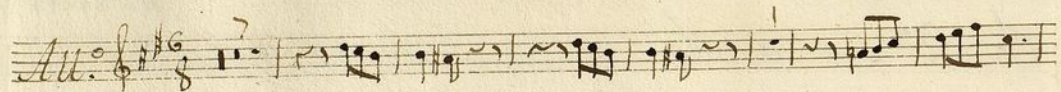
Staff 6: *Al Segno.*

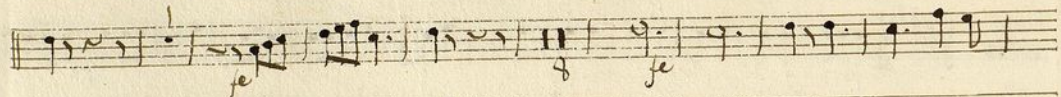
A page of aged, cream-colored paper featuring 12 horizontal musical staves. Each staff is composed of five parallel lines. The paper shows signs of wear, including a small brown stain on the left side and some faint, illegible markings. The text 'Ayuntamiento de Madrid' is printed at the bottom center.

Ayuntamiento de Madrid

Oboe 2^o Jon.^a a Solo

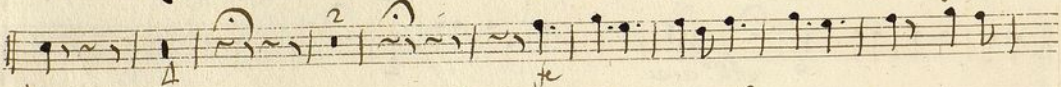
Handwritten musical score for Oboe 2, titled "Jon.^a a Solo". The score is written on ten staves. The first staff begins with the tempo marking "Al.^o" and the key signature of two sharps (F# and C#). The music features various dynamics such as *ff*, *f*, *p*, and *ff*, and includes performance instructions like "Solo" and "All.^o a. a. u.". The notation includes complex rhythmic patterns, including sixteenth and thirty-second notes, and rests. The score concludes with a double bar line on the tenth staff.

All.^o 



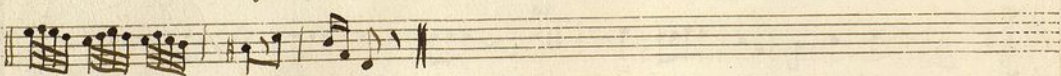


All.^o 

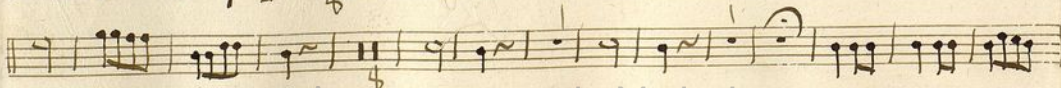




Al Segno
tres mas. 



All.^o *Comodo* 



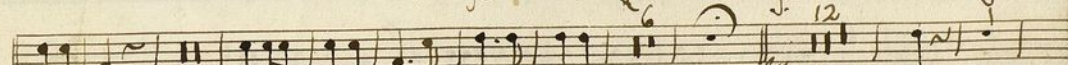
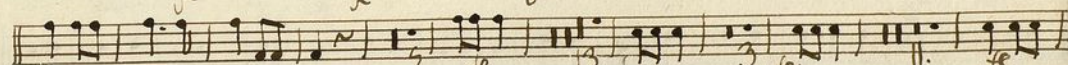
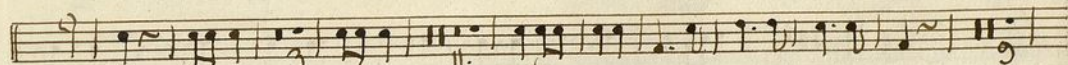
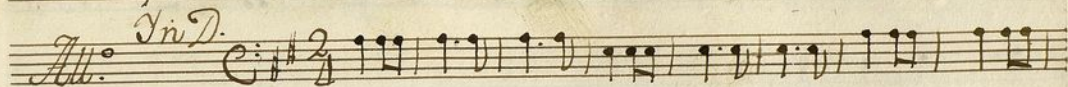
Handwritten musical score on six staves. The notation includes various rhythmic values, accidentals, and performance markings such as '2', '13', '9', 'je', and 'Al Segno.'



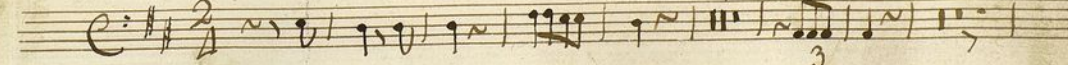
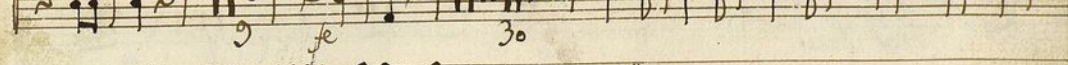
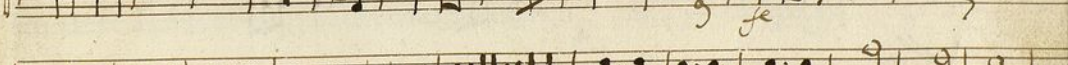
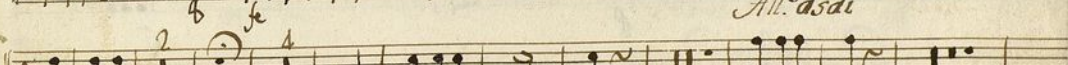
Ayuntamiento de Madrid

Trompa 1.^a Ton. a Solo

All.^o Tri D.



All.^o assai



Handwritten musical score on aged paper, consisting of ten staves of music. The notation includes various rhythmic values, accidentals, and dynamic markings. The first staff begins with a treble clef and a common time signature. The second staff continues the melody. The third staff is marked *All.^o* and features a treble clef, a 6/8 time signature, and a key signature of one flat. The fourth staff continues the piece with a treble clef and a 6/8 time signature, marked *All.^o*. The fifth staff is marked *All.^o* and features a treble clef, a 6/8 time signature, and a key signature of one flat. The sixth staff continues the piece with a treble clef and a 6/8 time signature. The seventh staff is marked *All.^o* and features a treble clef, a 6/8 time signature, and a key signature of one flat. The eighth staff is marked *All.^o* and features a treble clef, a 6/8 time signature, and a key signature of one flat. The ninth staff is marked *All.^o* and features a treble clef, a 6/8 time signature, and a key signature of one flat. The tenth staff is marked *All.^o* and features a treble clef, a 6/8 time signature, and a key signature of one flat. The piece concludes with a double bar line.

Dynamic markings include *je*, *p*, *f*, and *je*. The piece concludes with a double bar line.

All. Comodo. E: 2/4

22 4

4 Solo

4 je

je

4

26

4 Solo

je

Al Segno



Ayuntamiento de Madrid

t
Trompa 2.^a Ton.^o a Solo.

In D.
All.^o

Handwritten musical score for Trompa 2.^a in D major, 2/4 time. The score consists of 10 staves of music. The first staff is the title. The second staff begins with 'In D.' and 'All.^o'. The music features various rhythmic patterns, including eighth and sixteenth notes, and rests. There are several fermatas and dynamic markings like 'ff' and 'f'. The score ends with a double bar line.

Handwritten musical notation on a five-line staff. The tempo marking is *All.^o* and the time signature is $\frac{6}{8}$. The key signature has one sharp (F#). The music begins with a treble clef and a common time signature $\frac{6}{8}$ that changes to $\frac{3}{8}$. The notation includes various rhythmic values and dynamics such as *ff* and *u*.

Handwritten musical notation on a five-line staff. The tempo marking is *All.^o* and the time signature is $\frac{6}{8}$. The key signature has one sharp (F#). The music begins with a treble clef and a common time signature $\frac{6}{8}$ that changes to $\frac{3}{8}$. The notation includes various rhythmic values and dynamics such as *ff* and *u*.

Handwritten musical notation on a five-line staff. The tempo marking is *All.^o* and the time signature is $\frac{6}{8}$. The key signature has one sharp (F#). The music begins with a treble clef and a common time signature $\frac{6}{8}$ that changes to $\frac{3}{8}$. The notation includes various rhythmic values and dynamics such as *ff* and *u*. The staff ends with a double bar line and the instruction *Allegro* *trei mas.*

Handwritten musical notation on a five-line staff. The tempo marking is *All.^o* and the time signature is $\frac{6}{8}$. The key signature has one sharp (F#). The music begins with a treble clef and a common time signature $\frac{6}{8}$ that changes to $\frac{3}{8}$. The notation includes various rhythmic values and dynamics such as *ff* and *u*.

Handwritten musical notation on a five-line staff. The tempo marking is *All.^o* and the time signature is $\frac{6}{8}$. The key signature has one sharp (F#). The music begins with a treble clef and a common time signature $\frac{6}{8}$ that changes to $\frac{3}{8}$. The notation includes various rhythmic values and dynamics such as *ff* and *u*.

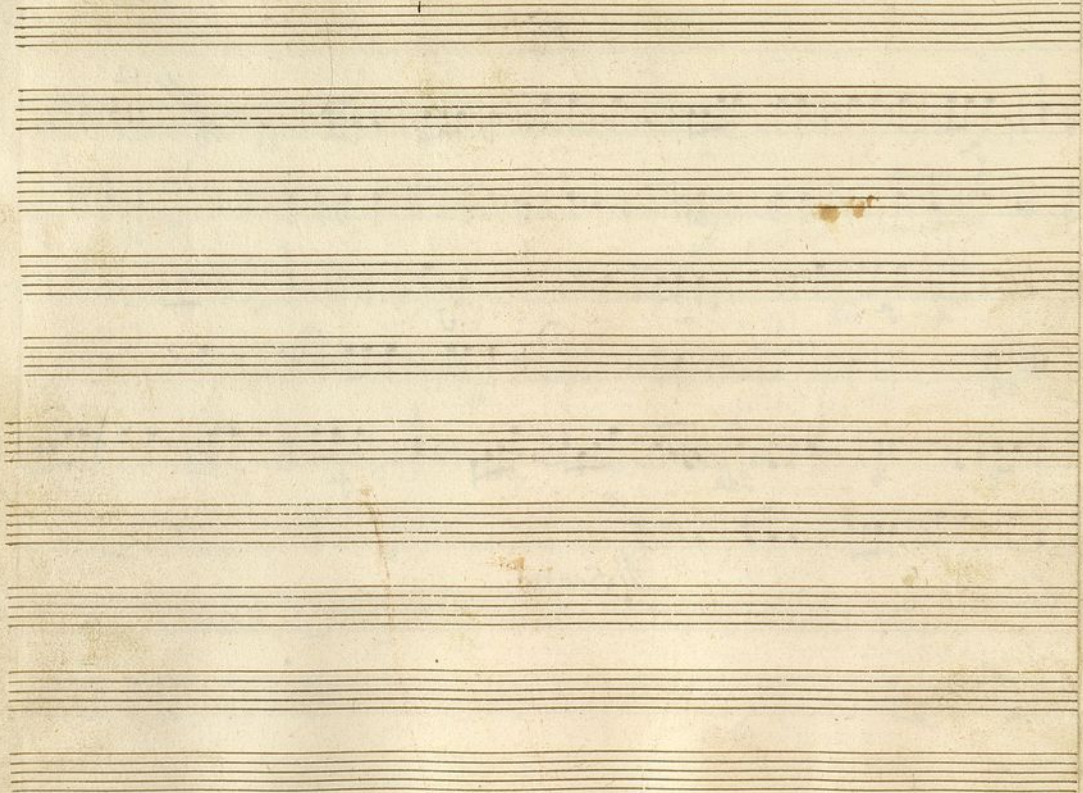
Handwritten musical notation on a five-line staff. The tempo marking is *All.^o Comodo* and the time signature is $\frac{2}{4}$. The key signature has one sharp (F#). The music begins with a treble clef and a common time signature $\frac{2}{4}$ that changes to $\frac{3}{4}$. The notation includes various rhythmic values and dynamics such as *ff* and *u*.

Handwritten musical notation on a five-line staff. The tempo marking is *All.^o Comodo* and the time signature is $\frac{2}{4}$. The key signature has one sharp (F#). The music begins with a treble clef and a common time signature $\frac{2}{4}$ that changes to $\frac{3}{4}$. The notation includes various rhythmic values and dynamics such as *ff* and *u*. The word *Solo* is written below the staff.

no
as.

Handwritten musical score on six staves. The notation includes various rhythmic values, accidentals, and performance markings such as "je", "Solo", and "24". A double bar line with a slash and the number "12" is present in the first staff. The piece concludes with a double bar line and a slash.

Al Segno.



Ayuntamiento de Madrid

t

Bafo

Fon.^a à solo.

All. C# $\frac{3}{4}$

All.° assu.

Punt.°

A handwritten musical score on ten staves. The notation includes various note values, rests, and dynamic markings. The word "Arco" is written above the first staff. The second staff has "p" and "arco" markings. The third staff has "p" markings. The fourth staff has "p" and "arco" markings. The fifth staff has "Cres. arco" and "p" markings. The sixth staff begins with "All." and has a "p" marking. The seventh staff has "p" and "arco" markings. The eighth staff has "p" and "arco" markings. The ninth staff has "p" and "arco" markings. The tenth staff has "p" and "arco" markings. The score concludes with a double bar line.

All.^o $\text{C} \# \text{F} \# \text{G}$ $\frac{6}{8}$

Allegro tre ma.

All.^o Comodo. $\text{C} \# \text{F} \# \text{G}$ $\frac{2}{4}$

cr. fe

A handwritten musical score consisting of seven staves. The notation includes various rhythmic values such as eighth, sixteenth, and thirty-second notes, as well as rests and beams. Dynamic markings are present throughout, including *f* (forte), *p* (piano), *pp* (pianissimo), and *crca. fe* (crescendo forte). The score concludes with a double bar line and the instruction *All. segno.* written in a cursive hand.

Ayuntamiento de Madrid