

*f**Conadilla Nueva**à Solo**Silencio à todos Pide**Del Sig.^x Misson*

And^{te}

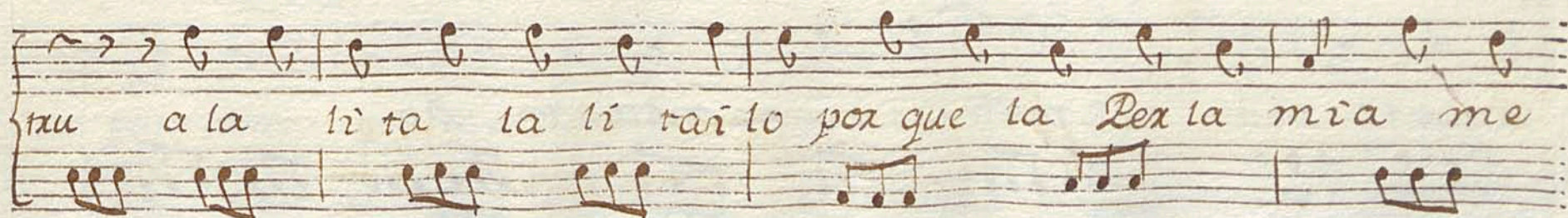
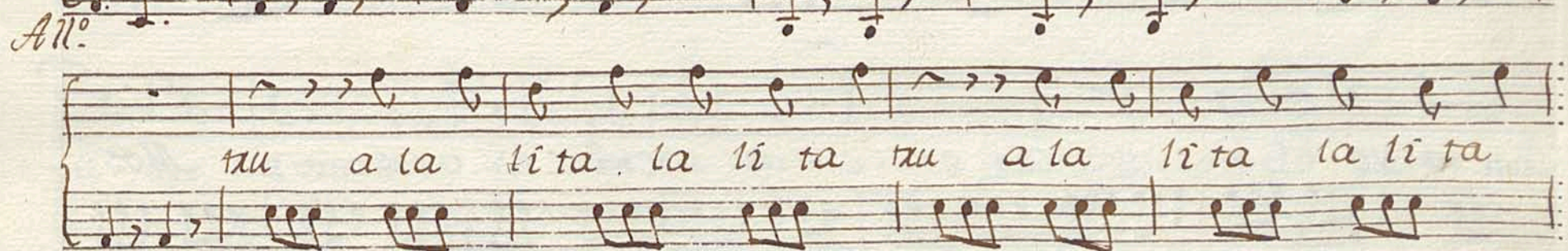
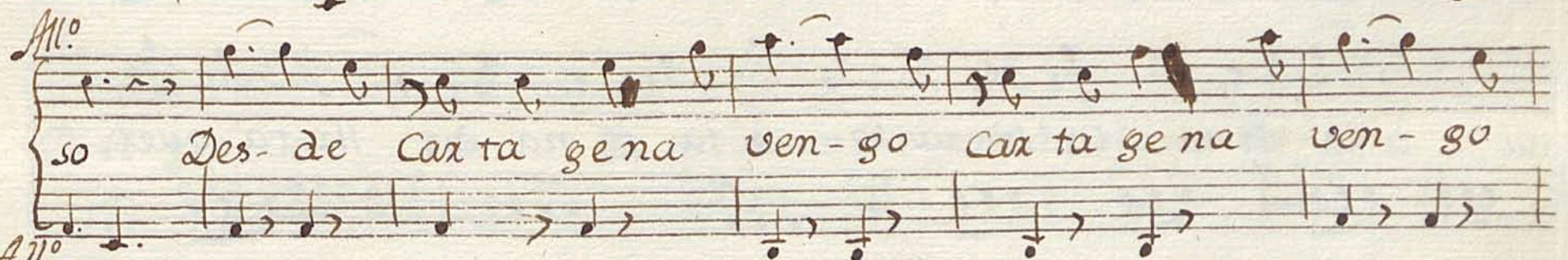
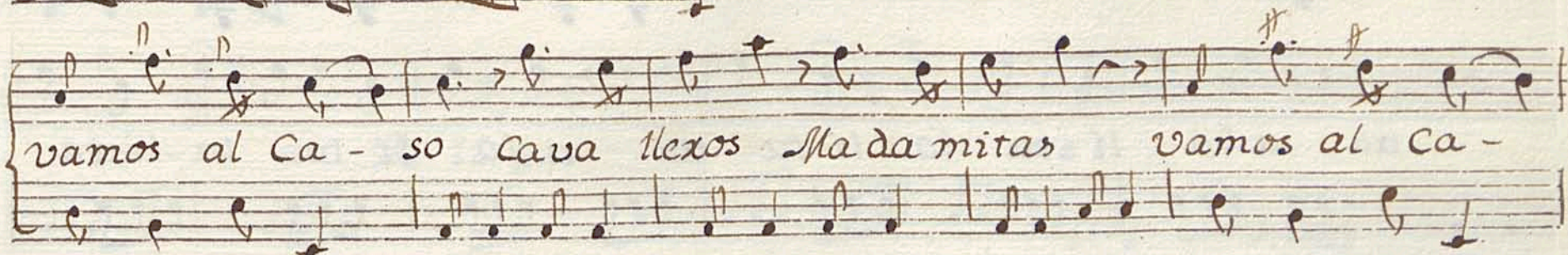
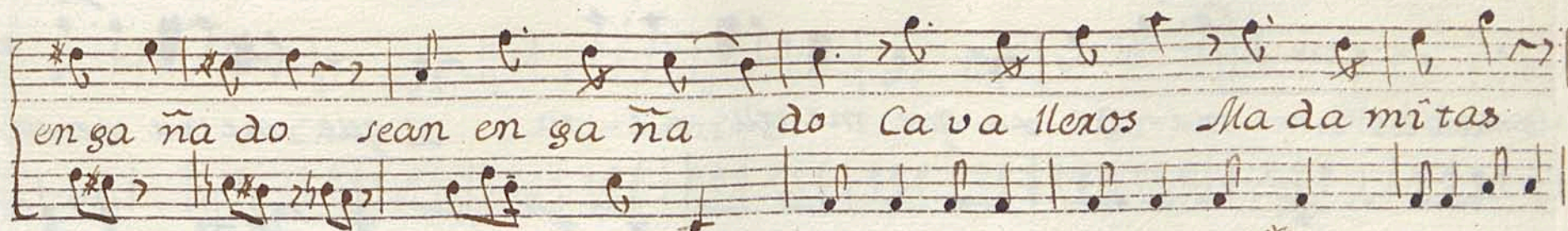
Silencio a todos pide la beixecita

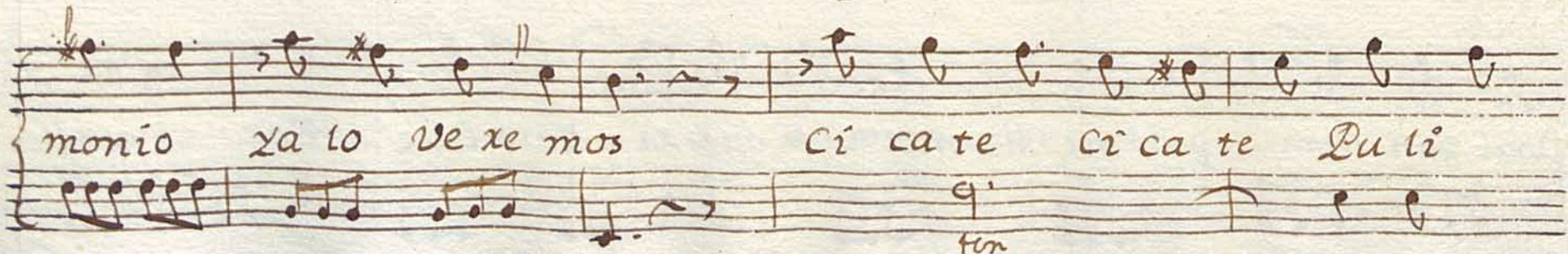
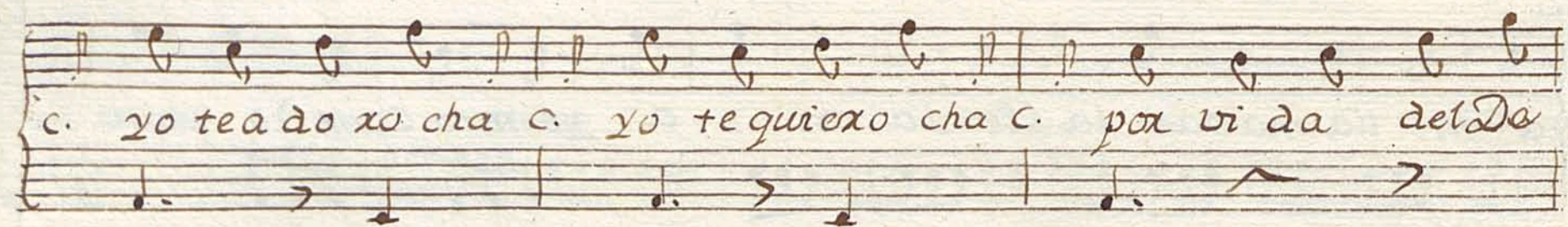
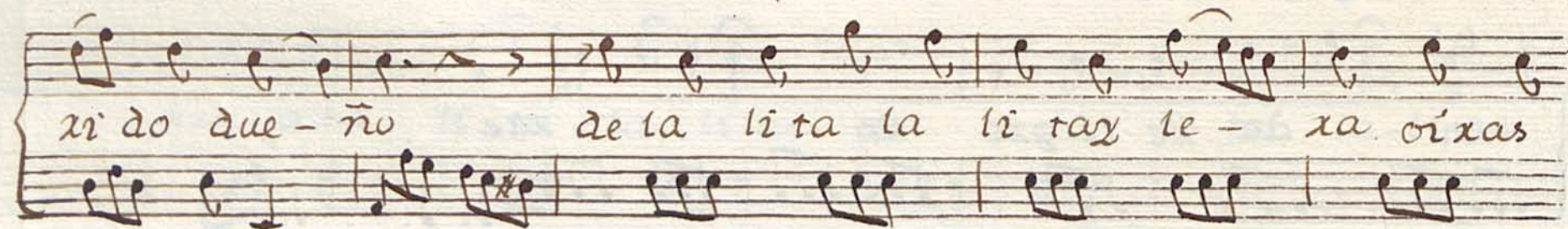
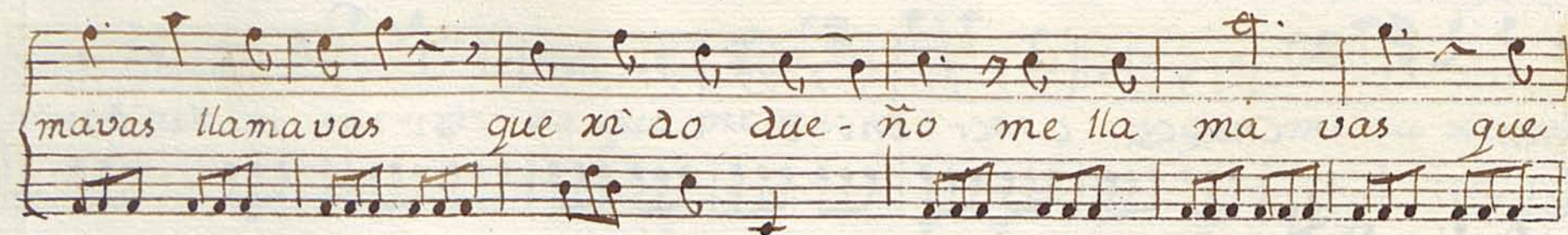
ca si mi ra
 Si len cio

ca si mi ra
 la te ~~re si ca~~ que quize echar se ño res su to na

aita Si len cio su to na di ta en ten de xan sin
 ten

au da sean ol vi da - do co mo soy de fi xo sean
 ten





di Pu li di mo xe ni mo xe ni to xa lo ve - xe mos

Ci ca te Ci ca te Pu li di Pu li di mo xe ni mo xe

ni to xa qui em pie 20

Andrno

Andrno seg.

Es - tas segui di lli tas - teo fex co Dex la teo fex co Dex

la teo fex co Dex la xazen el son so ne te las

Casta ñe-tas cc a la li ta la li ta la li ta le

xa a la li ta le xa c. c. c. c. c. c. c. c. c. c. c. c.

C. xazen el son so ne te las Casta ñe - - tas.

strivillo 2°

al Dueño mío

a compañen mis ecos

Con sus Cañiños

esquivillo 3°

La Castañeta

que Lepira gustosa

La tita Lora

+

Violín Primero

Tonadilla a solo

Silencio a todos pi de

J.^r Misson

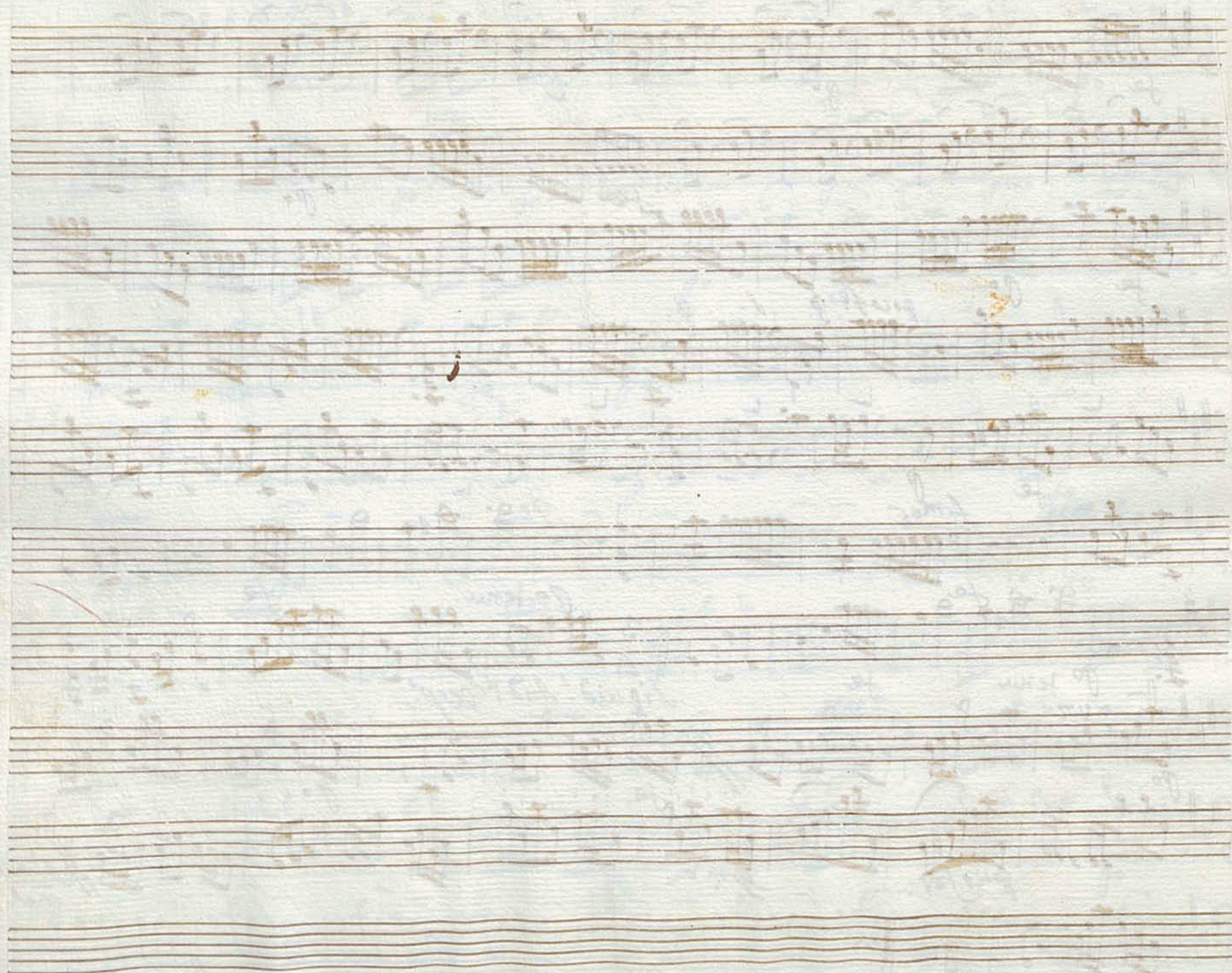
Tonadilla a solo

3

And.^{te} Poco

Handwritten musical score for a solo piece, titled "Tonadilla a solo". The score is written on ten staves, featuring treble clefs, a key signature of two sharps (F# and C#), and a 6/8 time signature. The tempo is marked "And.^{te} Poco". The notation includes various musical symbols such as notes, rests, and dynamic markings (p, f, p2, p1mo, fmo, tenu, Att.). The score is written in a cursive, handwritten style.

Handwritten musical score on ten staves, featuring complex rhythmic patterns and various musical notations. The score includes dynamic markings such as *fe*, *p*, *poco fe*, *p*, *f*, *molto*, *poco tenu*, *vo*, *And*, *desp*, and *molto*. The notation includes treble clefs, key signatures of two sharps (F# and C#), and various rhythmic values including eighth, sixteenth, and thirty-second notes, as well as rests and accidentals. The score concludes with the instruction *Kata e* and the number *2 v*.



Violin Segundo

Tonadilla a solo

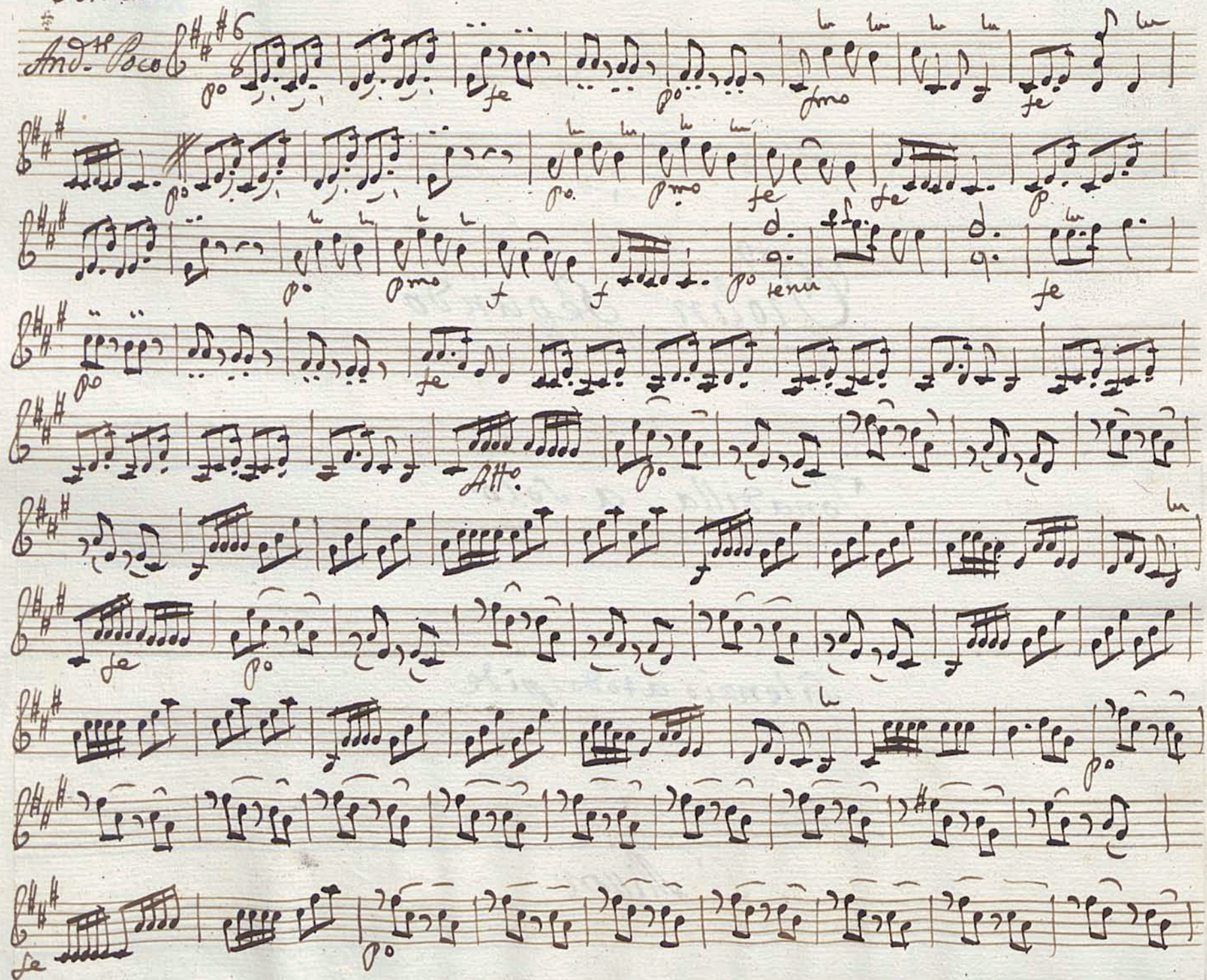
Silenzio a todos pide

S.^r Mison

Tonadilla a solo

+

Handwritten musical score for a solo piece titled "Tonadilla a solo". The score is written on ten staves, each beginning with a treble clef and a key signature of two sharps (F# and C#). The time signature is 6/8. The notation includes various musical symbols such as notes, rests, and dynamic markings like *And. Poco*, *fe*, *po*, *mo*, *tenu*, and *ffo*. The score is written in a cursive, handwritten style.

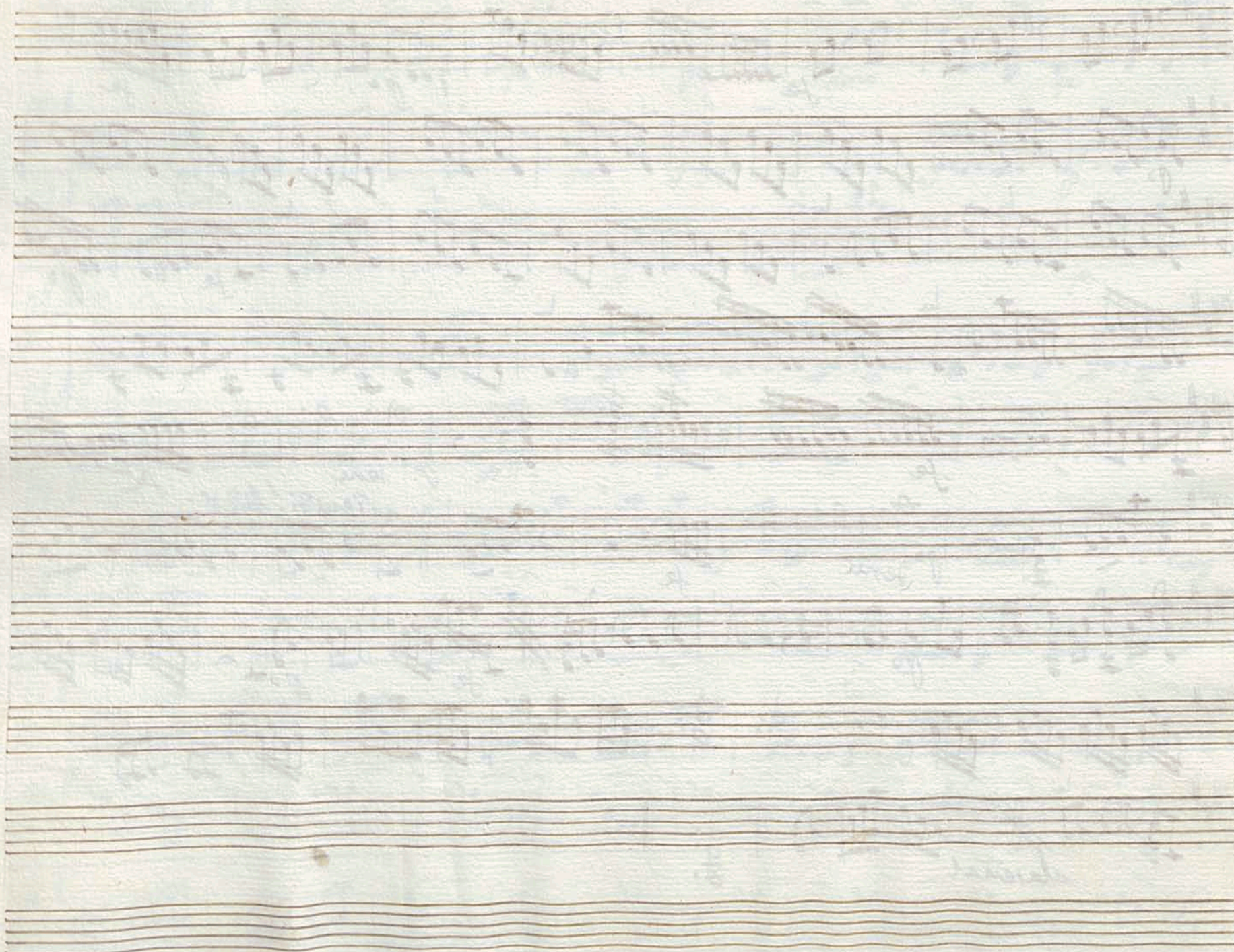


Handwritten musical score on ten staves, featuring various musical notations including notes, rests, and dynamic markings. The score is written in a single system across ten staves. The key signature is two sharps (F# and C#), and the time signature is 3/4. The notation includes eighth and sixteenth notes, rests, and dynamic markings such as *fe*, *lento*, *sempre*, *And.^{te}*, and *allegro*. The score concludes with a double bar line and a repeat sign.

Dynamic markings and performance instructions include:

- fe* (forte)
- lento* (slow)
- sempre* (always)
- And.^{te}* (Andante)
- allegro* (lively)

The score concludes with the instruction *allegro* written below the final staff.



+

Violon

Sonadilla a solo

Silencio a todos pide

S.^t. Misson

Tonadilla a solo

And.^{te} *Ben* $\text{C}:\sharp\sharp$ $\frac{6}{8}$

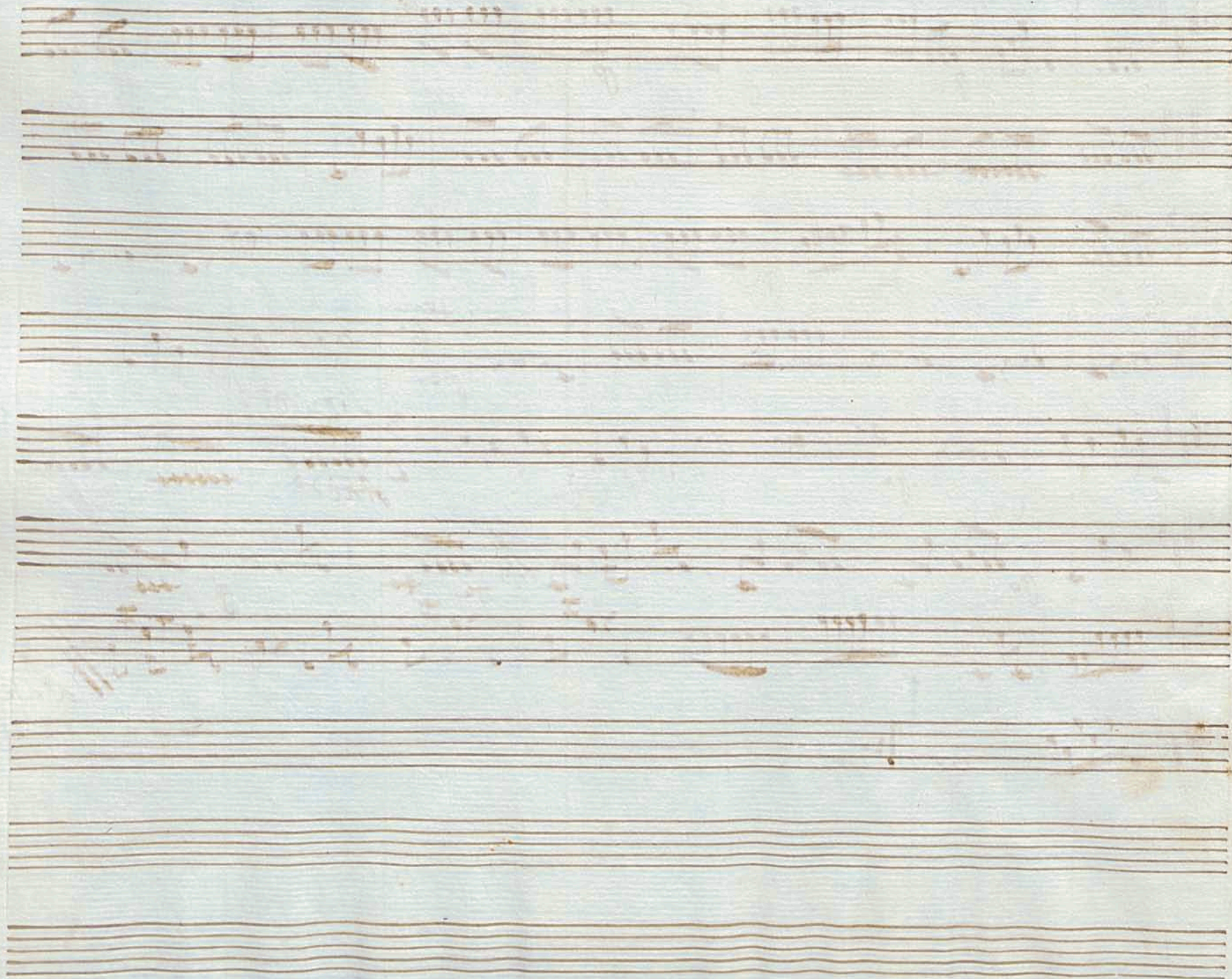
f *p* *f* *p* *fmo* *p* *pmo* *fmo* *p tenu.* *f*

Alto.

fe *p* *fe*

p

Handwritten musical score on eight staves, featuring various musical notations, dynamics, and performance instructions. The score is written in a key signature of one sharp (F#) and a common time signature (C). The notation includes notes, rests, and bar lines. Dynamics such as *p* (piano), *f* (forte), *te*, *tenu*, *And te*, and *al a seña* are present. Performance instructions include *Se*, *And te*, *And te*, *And te*, *And te*, *And te*, *And te*, and *And te*. The score concludes with a double bar line and the instruction *al a seña* followed by *2. Vlt.*



+

Trompa Primera

Tonadilla a Solo

Silencio a todos pi de

J. L. Mison

Tonadilla a solo

Alamirre

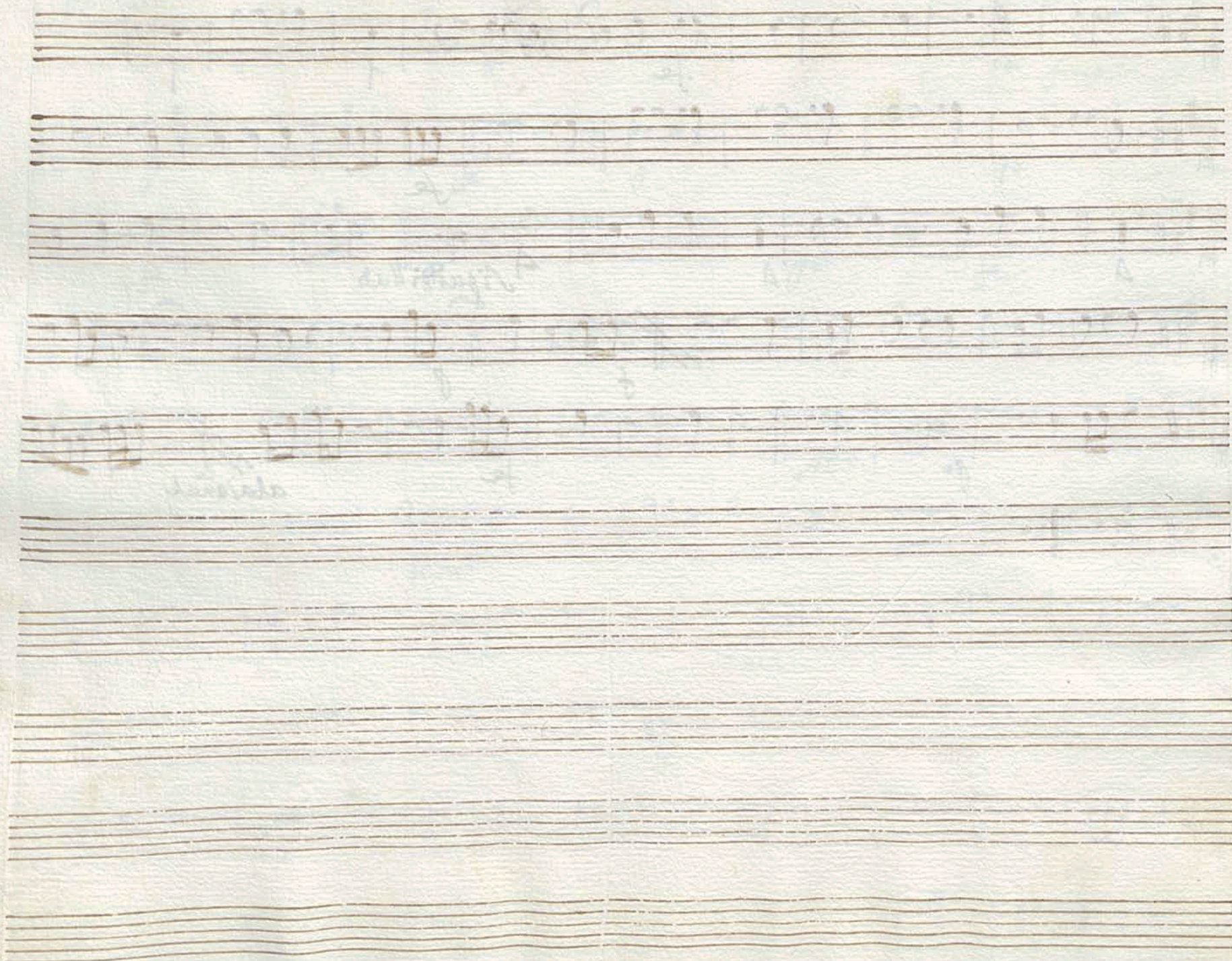
And.^{te} *Allegro*

+

6/8

Handwritten musical score for "Tonadilla a solo" by Alamirre. The score is written on ten staves in G major (one sharp) and 6/8 time. It includes various musical notations such as notes, rests, and dynamic markings like *p*, *f*, *fmo*, *p₀*, *fe*, *A.H.*, and *tenu*. The piece begins with a double bar line and a repeat sign. The notation is in a cursive, handwritten style typical of 18th or 19th-century manuscripts.

Handwritten musical score on six staves. The first staff has a treble clef and a key signature of two sharps (F# and C#). It contains a melody with notes and rests, with the word "fe" written below it. The second staff continues the melody with more notes and rests, also with "fe" below. The third staff has a treble clef and a key signature of two sharps, with a 3/4 time signature. It contains a melody with notes and rests, with the word "siguivillas" written below it. The fourth staff continues the melody with notes and rests, with "f" and "p" written below. The fifth staff continues the melody with notes and rests, with "fe" and "ala/enal" written below. The sixth staff has a treble clef and a key signature of two sharps, with a 3/4 time signature, and contains a melody with notes and rests.



+

Trompa Segunda

Tonadilla a solo

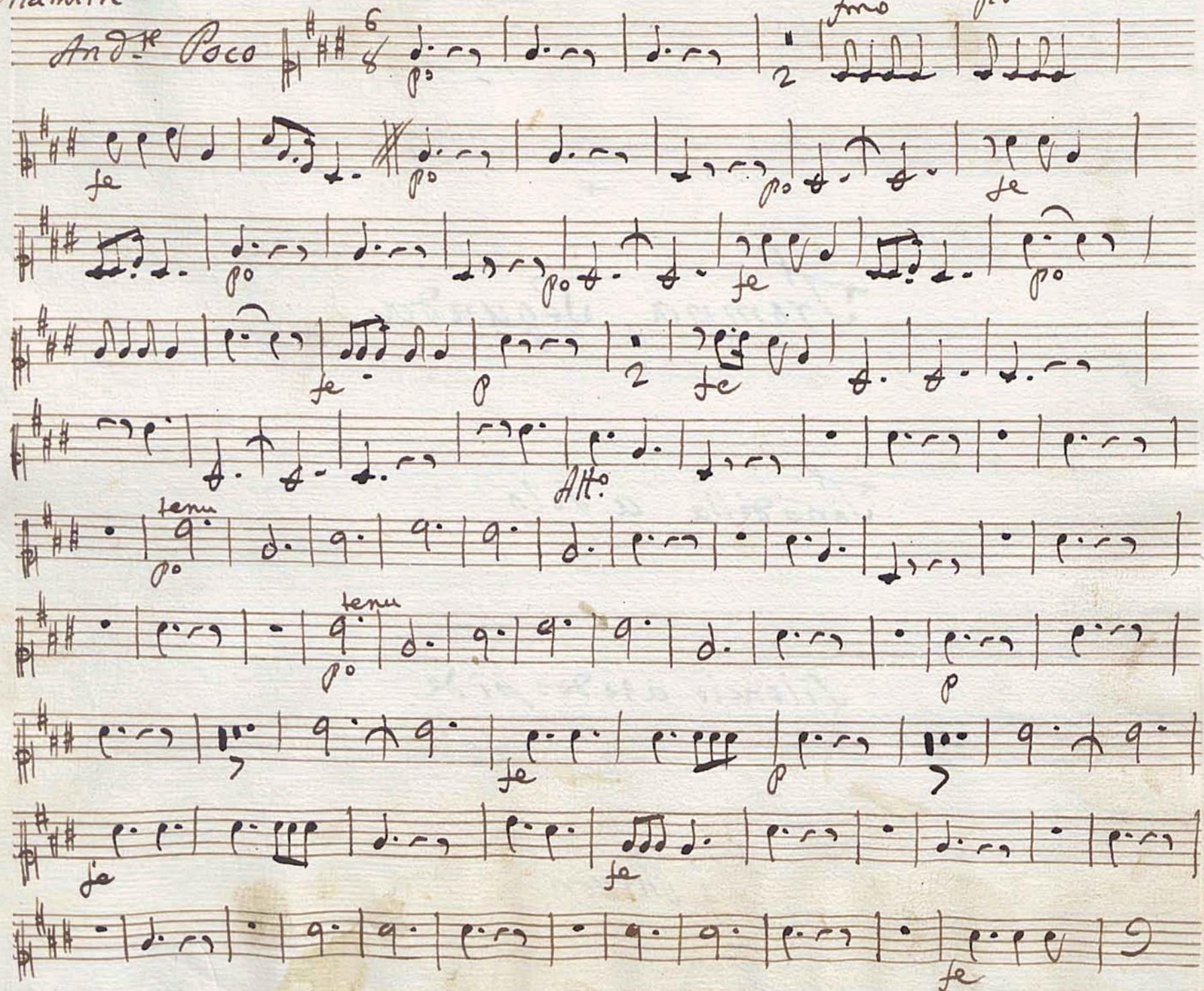
Silencio a todos pide

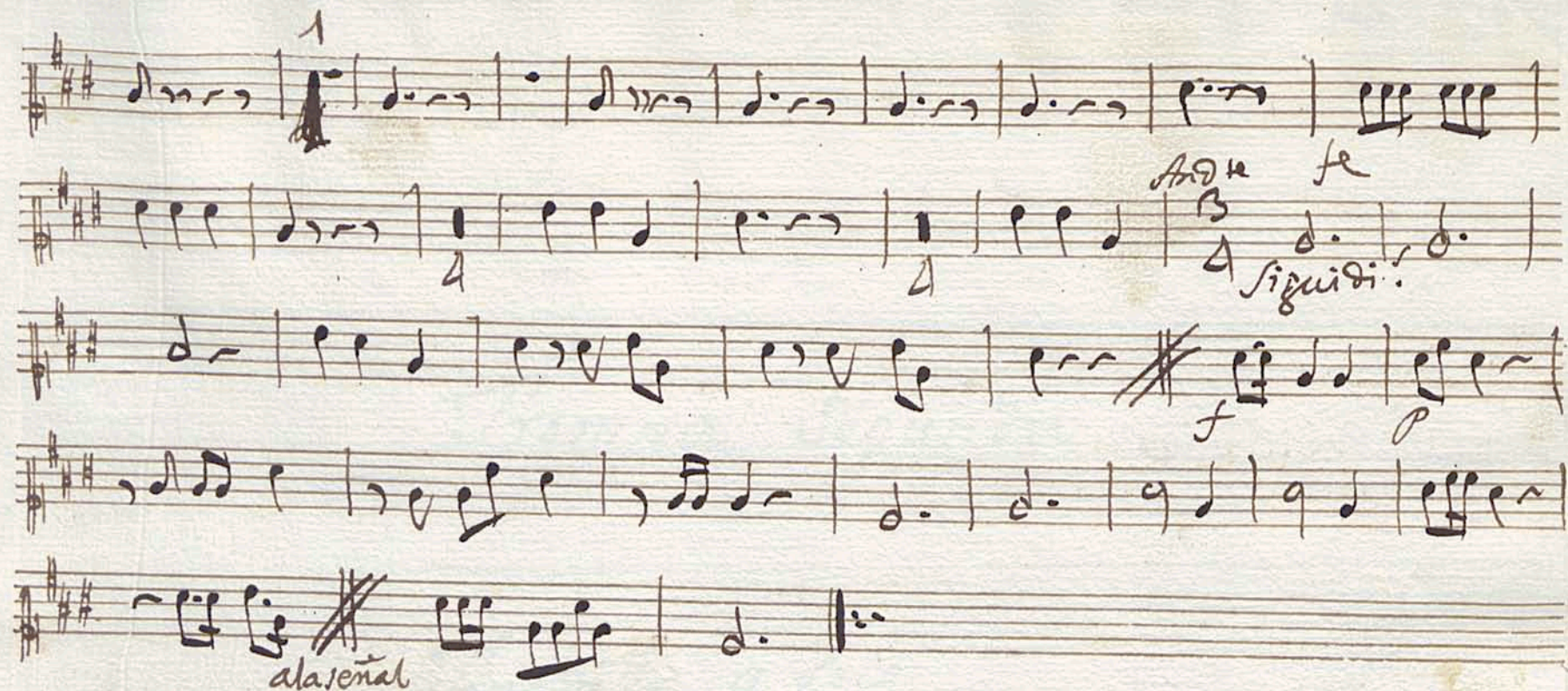
J. L. Mison

Alamirre Tona dilla a solo

And. Peco

mo 20





+

Contravaso

Tonadilla a solo

Silencio a todos pide

Tonadilla a solo

+

Handwritten musical score for a solo piece, titled "Tonadilla a solo". The score is written on ten staves, each beginning with a treble clef, a key signature of two sharps (F# and C#), and a 6/8 time signature. The tempo marking "And. Poco" is present at the beginning. The notation includes various musical symbols such as notes, rests, and dynamic markings like *f*, *po*, *fmo*, *tenu*, *se*, *Att.*, and *po*. The score concludes with a final double bar line.

Handwritten musical score on eight staves, featuring various musical notations including notes, rests, and dynamic markings. The score is written in a single system, with the first seven staves containing musical notation and the eighth staff being empty. The notation includes notes, rests, and dynamic markings such as *fe*, *p*, *f*, *tem*, *Andte*, and *allegro*. The score is written in a single system, with the first seven staves containing musical notation and the eighth staff being empty.

Dynamic markings and performance instructions include:

- fe* (first ending)
- p* (piano)
- f* (forte)
- tem* (tempo)
- Andte* (Andante)
- allegro*

