

Leg.<sup>o</sup> 5.<sup>o</sup> n.<sup>o</sup> 26

Mos 23-74 bis

Coro

En la Comedia

D<sup>ña</sup> y  
D<sup>ñs</sup> de Castro.

23-74 bis



*Pas 40*

*Pas 40*

*res de manzana res*

*y me*

*res de manzana res*



mue ro por y nes corte - sana en el a se o La bra -

dora en guardar fe cor - te sana en el a se v La bra -



dora en guardar fe

~~Dicen que el bagalo es una cosa pero una cosa es la Marqueta de la gente que~~  
~~Dicen que el bagalo es una cosa pero una cosa es la Marqueta de la gente que~~  
~~bagalo bagalo pero bagalo bagalo que no hay remedio~~



Violin 1.<sup>o</sup> Com.<sup>a</sup>

Vailete II.

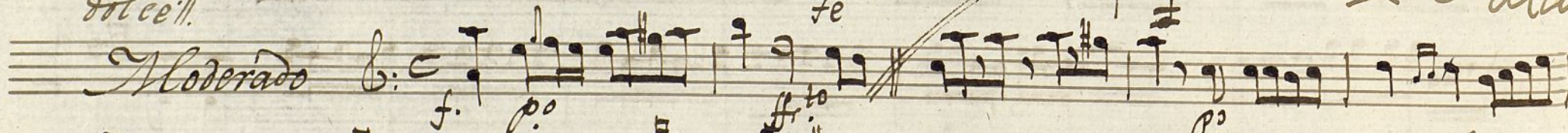
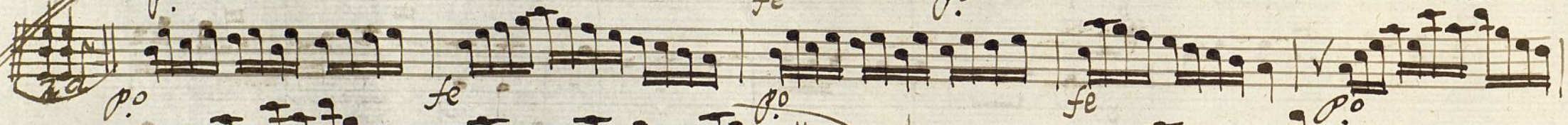
Pastoral

Handwritten musical score for Violin 1. The score is titled "Vailete II." and "Pastoral". It is written for Violin 1. The key signature is one sharp (F#) and the time signature is 6/8. The music consists of several staves of notes, including a double bar line and a repeat sign. The piece ends with the instruction "Se Repite".



Nº 2.ª 2.ª

Princesa



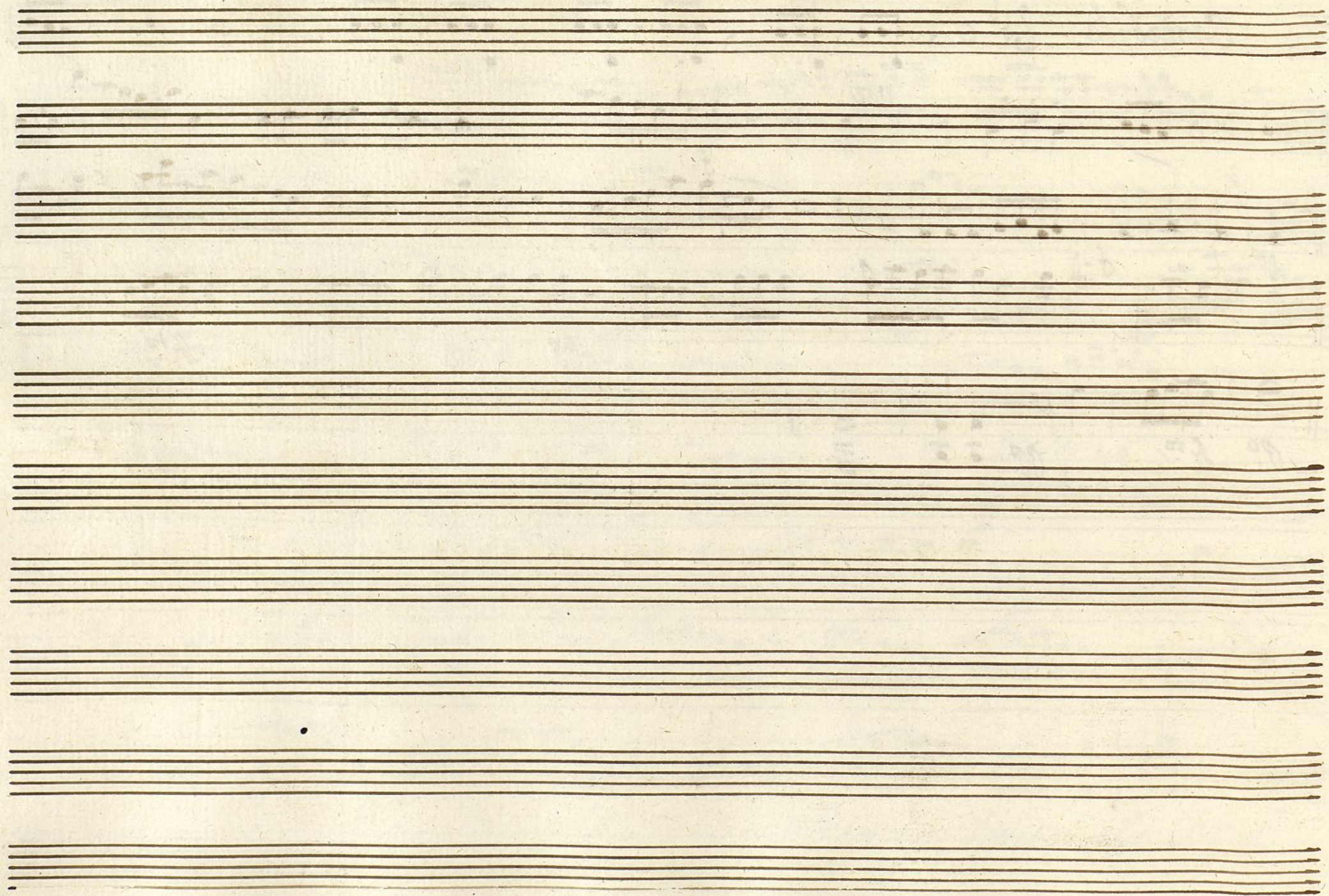
Version y repite ala señal



*Cantabile*

Handwritten musical score for a piece titled "Cantabile". The score is written on five staves. The first staff begins with a treble clef, a key signature of one flat (B-flat), and a common time signature (C). The music consists of eighth and sixteenth notes, with some rests. The second staff has a "voz" marking above it. The third staff features a "f." marking. The fourth staff has a "pp." marking. The fifth staff has a "p." marking and a "f." marking. The score ends with a double bar line.







Violin 1.<sup>o</sup> Com.<sup>a</sup>

Vailete.

*r.<sup>o</sup> 1.<sup>o</sup> Pastoral*

*f.*

*p.*

*f.*

*p.*

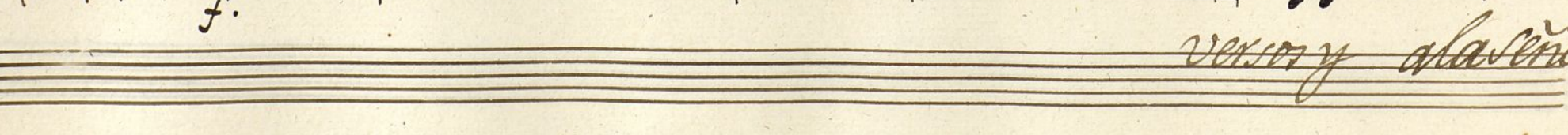
*f.*

*verase Repite*



Nº 2. 1ª 2ª //

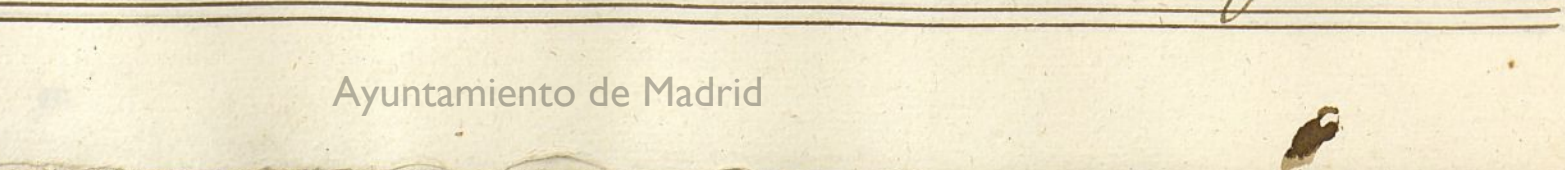
Princera



2ª mas //

Nº 3. 1ª 2ª //

Mod: to



versos y ala señal //



*Cantabile*

Handwritten musical score on aged paper. The score consists of five staves. The first staff begins with the tempo marking *Cantabile* and a treble clef with a key signature of one flat. The notation includes various musical symbols such as notes, rests, and dynamic markings like *f.*, *pp.*, and *ff.*. There are also handwritten annotations like *voz* and *ff. to*. The paper shows signs of age, including yellowing and some staining. On the left margin, there are some handwritten marks, including a large *H* and a signature-like mark at the bottom left.



A handwritten musical score on ten staves. The notation is in brown ink on aged, slightly discolored paper. The first staff is empty. The second staff begins with a treble clef and contains several measures of music, including eighth and sixteenth notes. The third staff continues the melody. The fourth staff has a few notes. The fifth staff contains a series of beamed notes. The sixth staff is empty. The seventh staff is empty. The eighth staff is empty. The ninth staff is empty. The tenth staff is empty. There are some faint blue ink markings and smudges across the page, possibly from the reverse side or another page.



Violin 2º Comª

No 1º // 1ª Xª

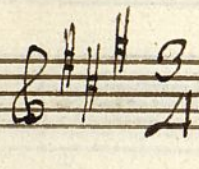
*Pastoral*



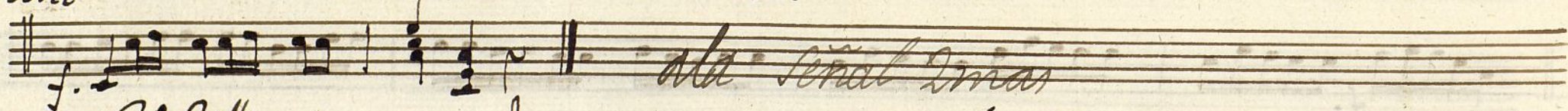
# No 2a //

No 2o //

Princesa



Parola 2a



No 3o //

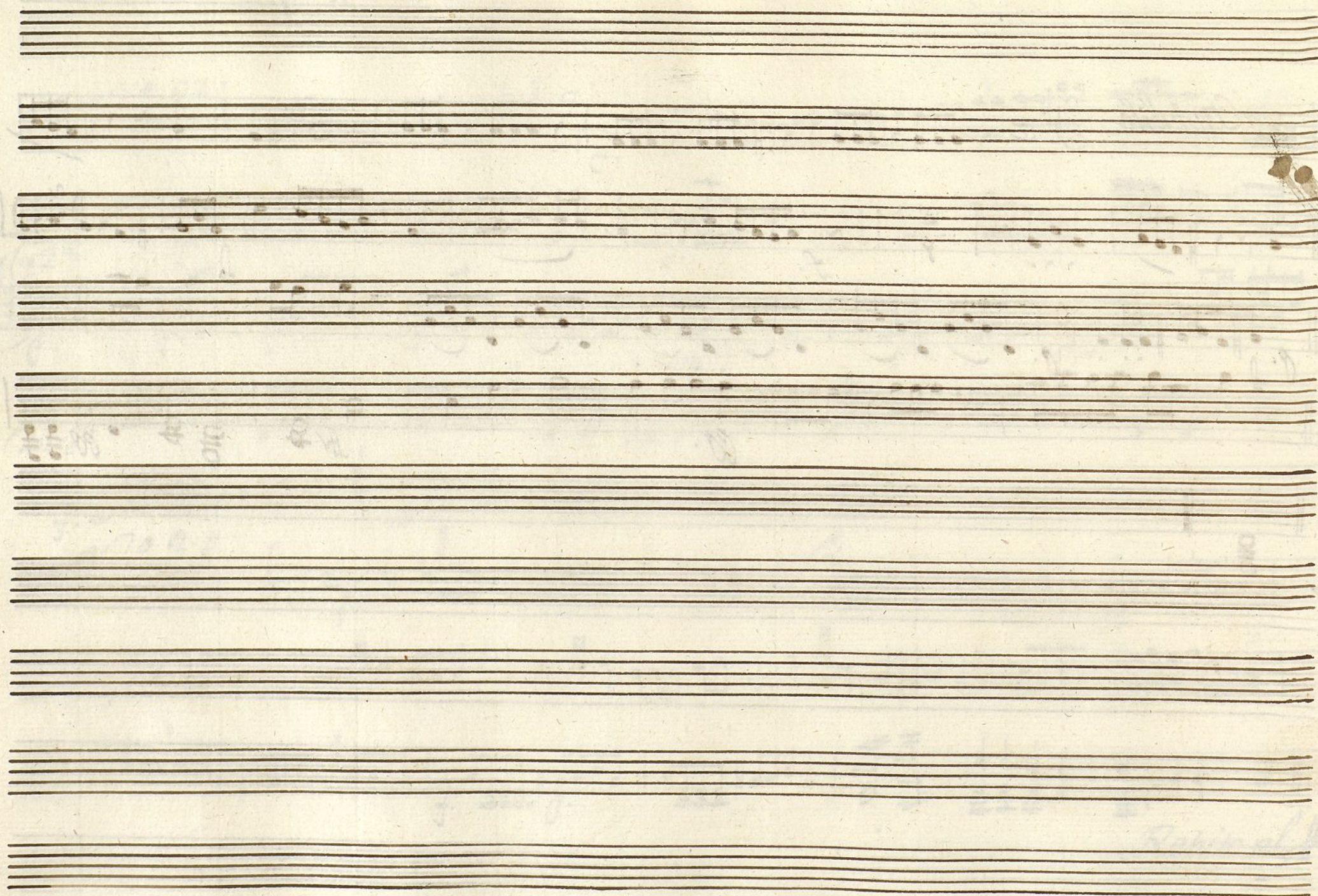


Repite al //



*Cantabile*







Violin 2.<sup>o</sup> Com.<sup>a</sup>  
No. 1.<sup>o</sup> // 1.<sup>a</sup> X.<sup>a</sup>

*Pastoral*

*Se Repite*

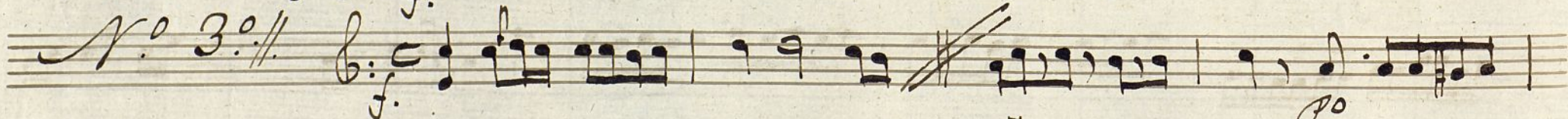


N<sup>a</sup> 2<sup>a</sup> //

N<sup>o</sup> 2<sup>o</sup> Princesa



*Para la 2<sup>a</sup>*





Tercera X<sup>a</sup>

*Cantabile* 8:16 c

A handwritten musical score on aged paper. The title 'Tercera X<sup>a</sup>' is written in the top left. The tempo 'Cantabile' and time signature '8:16 c' are at the top of the first staff. The score consists of five staves. The first four staves contain a melody with various note values, rests, and dynamic markings like 'f.' and 'pp'. The fourth staff has a section crossed out with a dense X pattern. The fifth staff continues the melody with a 'pp' marking. The paper shows signs of age, including stains and a small mark on the left edge.



*Trompa 1ª Com a*

*Nº 1º In Al. re Xa 1ª*

*vers. (Xepite)*

*Xa 2ª Nº 2 In Al. re*

*vers. y ala*

*Nº 3º in C. ut Mod. to*

*Se Xepite ala Señal*

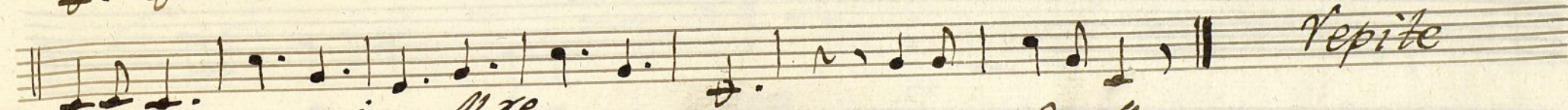
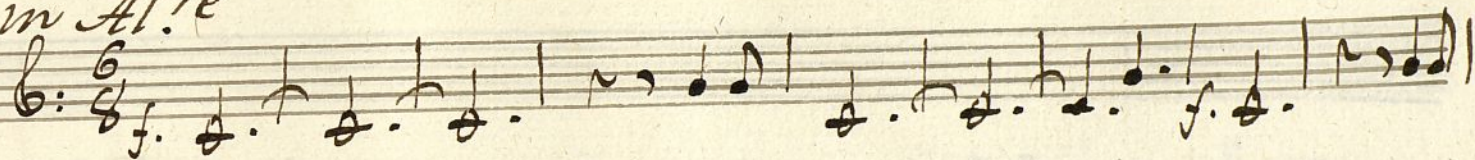
*Nº 4º in G. ut Cantabile*

*f. p. f. p. f. p. f. p.*

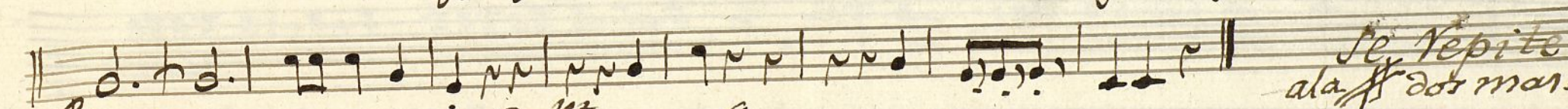
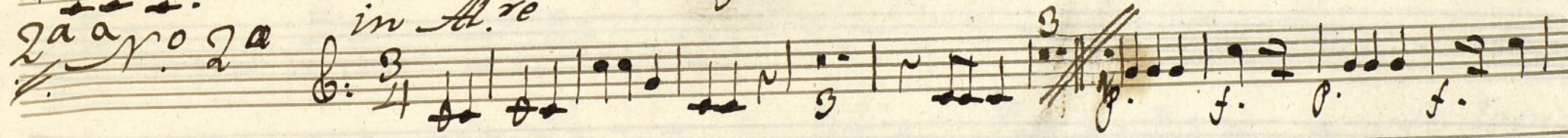


*Trompa 2<sup>a</sup> Corn<sup>a</sup>*

*1.<sup>a</sup> X<sup>a</sup> No. 1<sup>o</sup> in A. re*



*X<sup>a</sup> 2<sup>a</sup> No. 2<sup>a</sup> in A. re*

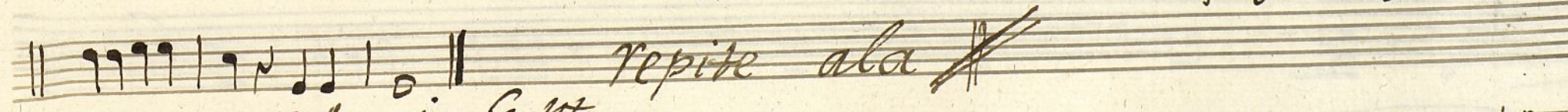


*No. 3.*

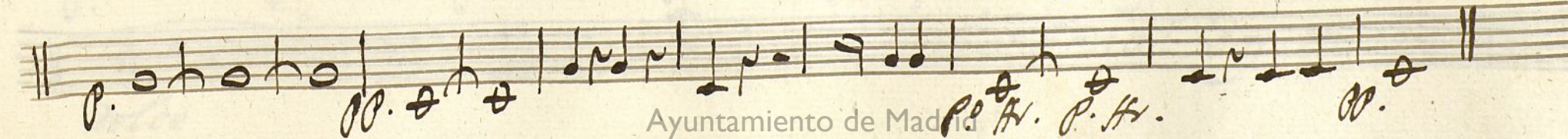
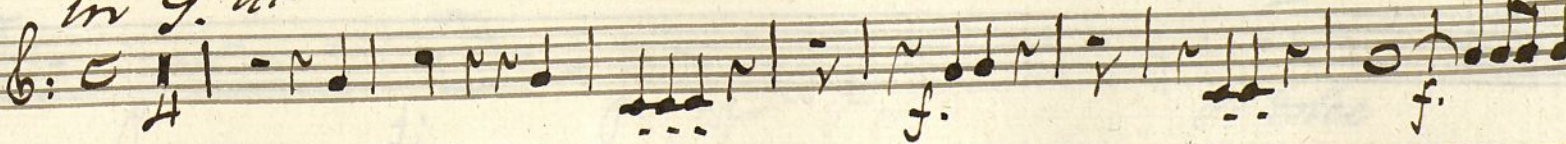
*Mod: to in C. ut*



*Se Repite ala # dor mar.*



*Cantabile No. 4 in G. ut*





Oboe Com.<sup>a</sup>

Vailete // Pastoral

N.º 1.º //

N.º 2.º //

Prin<sup>ce</sup>ra

ala Señal do<sup>ra</sup> ma.



N.º 3

*Moderado*

*f.*

*Solo Cantabile*

*p.*

*f.*

*verron*

*voz*

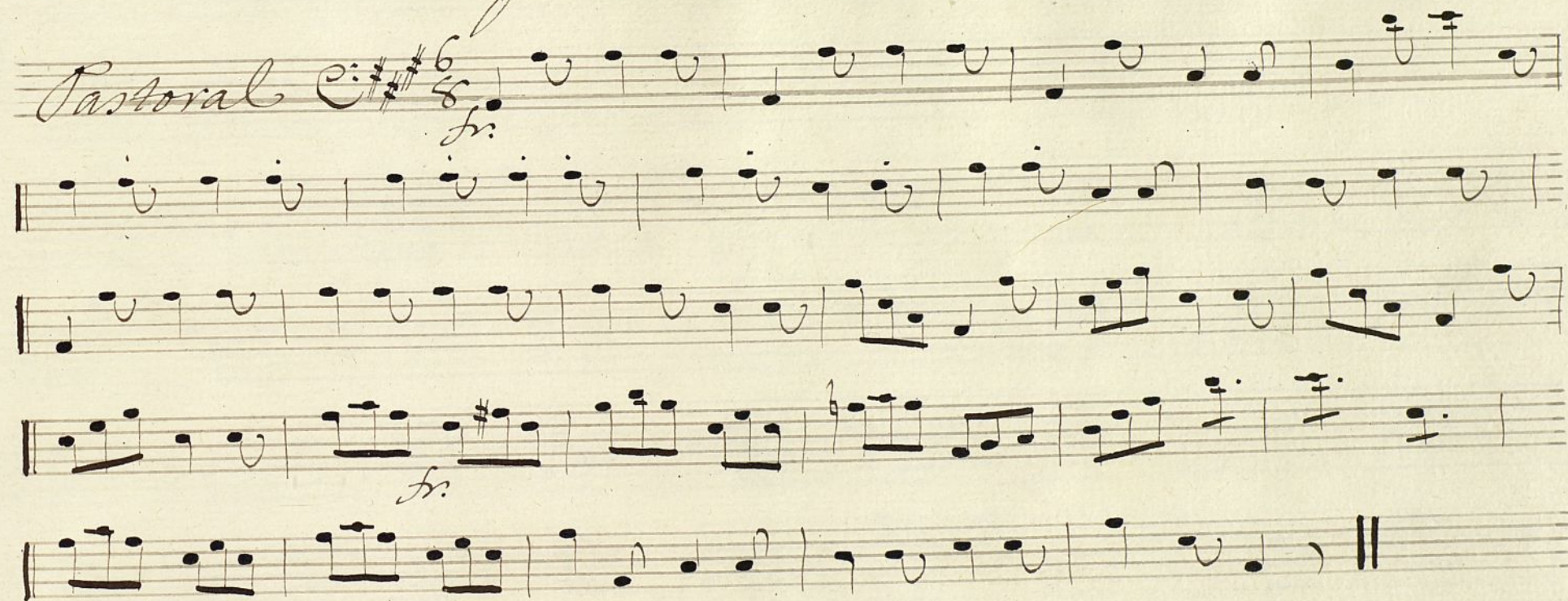
*solo*

*p.* *f.to* *p.to* *pp.*

*ala se repite ala señal*



Bajo. Com.<sup>a</sup>



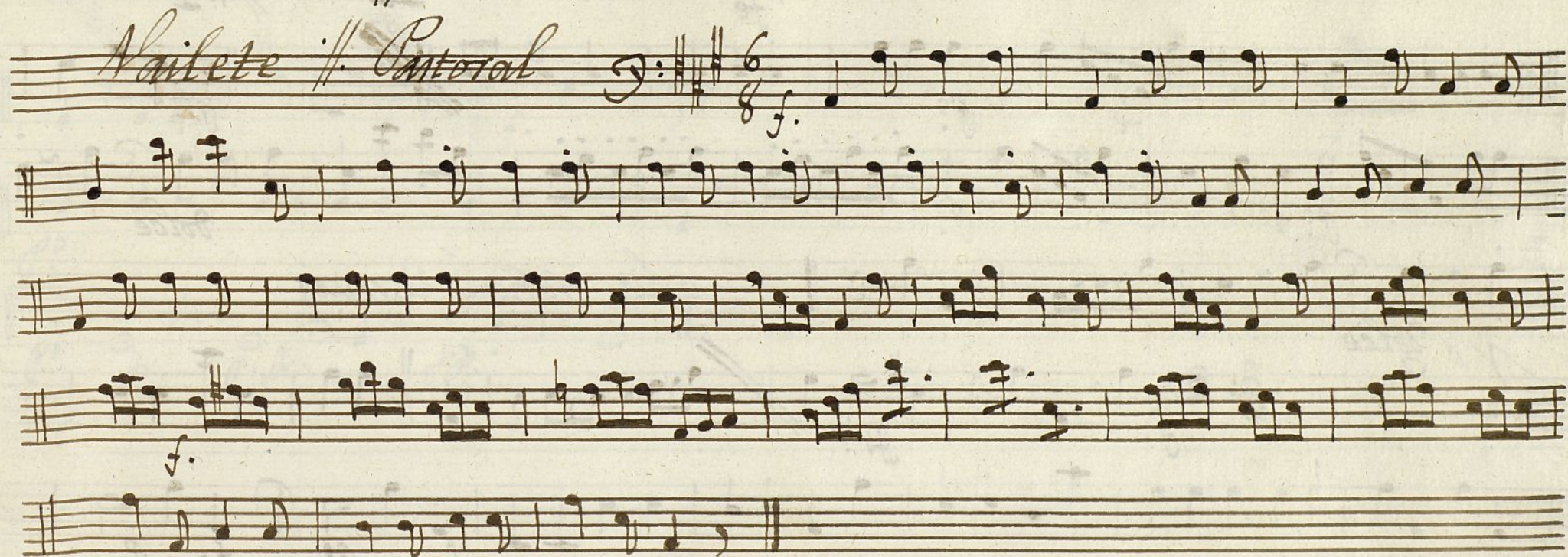


Bajo

Com.<sup>a</sup>

No 1<sup>a</sup> Va //

Vaiete // Cantoral



Se Repite



# 2ª Va. //

## Princesa // N.º 2.º //

Handwritten musical score for 2ª Va. (Violoncello II) of the Princesa N.º 2.º. The score is written on ten staves. The first system (staves 1-4) is in 3/4 time, key of D major, and includes dynamics like 'fe', 'p.', 'f.', and 'dolce'. The second system (staves 5-7) is in 3/4 time, key of D major, and includes dynamics like 'f.', 'p.', 'f.', and 'p.'. The third system (staves 8-10) is in 3/4 time, key of D major, and includes dynamics like 'f.', 'p.', 'f.', and 'p.'. The score ends with a double bar line and a repeat sign.

Repite ala señal //



*Cantabile*

Handwritten musical score for a piece titled "Cantabile". The score is written on four staves. The first staff begins with a treble clef, a key signature of one sharp (F#), and a common time signature (C). The tempo marking "Cantabile" is written above the first staff. The first staff contains a melody starting with a half note, followed by quarter notes, and ending with a half note. The second staff continues the melody, featuring a double bar line, a key signature change to one sharp (F#), and a dynamic marking of "f." (forte). The third staff continues the melody, featuring a dynamic marking of "pp." (pianissimo) and a key signature change to one sharp (F#). The fourth staff continues the melody, featuring a dynamic marking of "pp." and a key signature change to one sharp (F#). The score concludes with a double bar line.