

218

Parque de Clave Seg.^o 15. + Num.^o 9.

Mus 218

En la Comedia; El Parecido de Tunes. //

Tornada 2^a //

Una Marcha en la Tornada 1^a de Oboceros y Trompas; *Allegro* *Se empieza*

ora fe lize venga en ora fe lize

Handwritten musical score for a song, featuring three systems of staves. The lyrics are written in Spanish.

System 1:
ven - ga para o nor de Ber ve ria

System 2:
pa ra o nor de Ber ve ri - a

System 3:
Hazèn que - es Ruendos de

Violin Primero

MUS 21-8

en la Comedia; el Parecido de Luner;

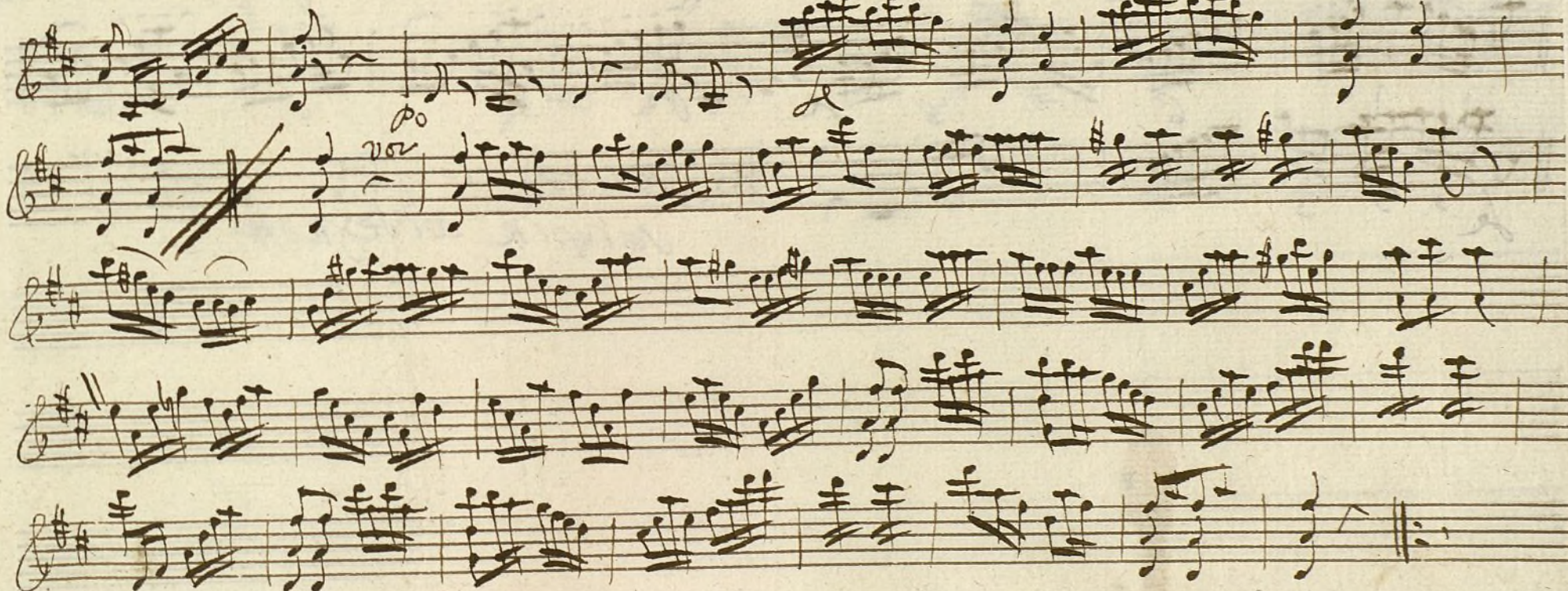
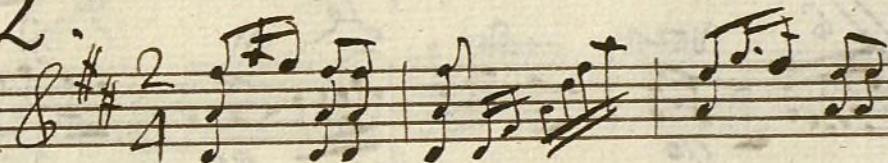
Una Marcha, los Oboes y Trompas
en la Tornada 1^a.

Se empieza

Tornada 2^a

Coro;

Allegro



Se repite al segno

Tornada 3^a

Cpla

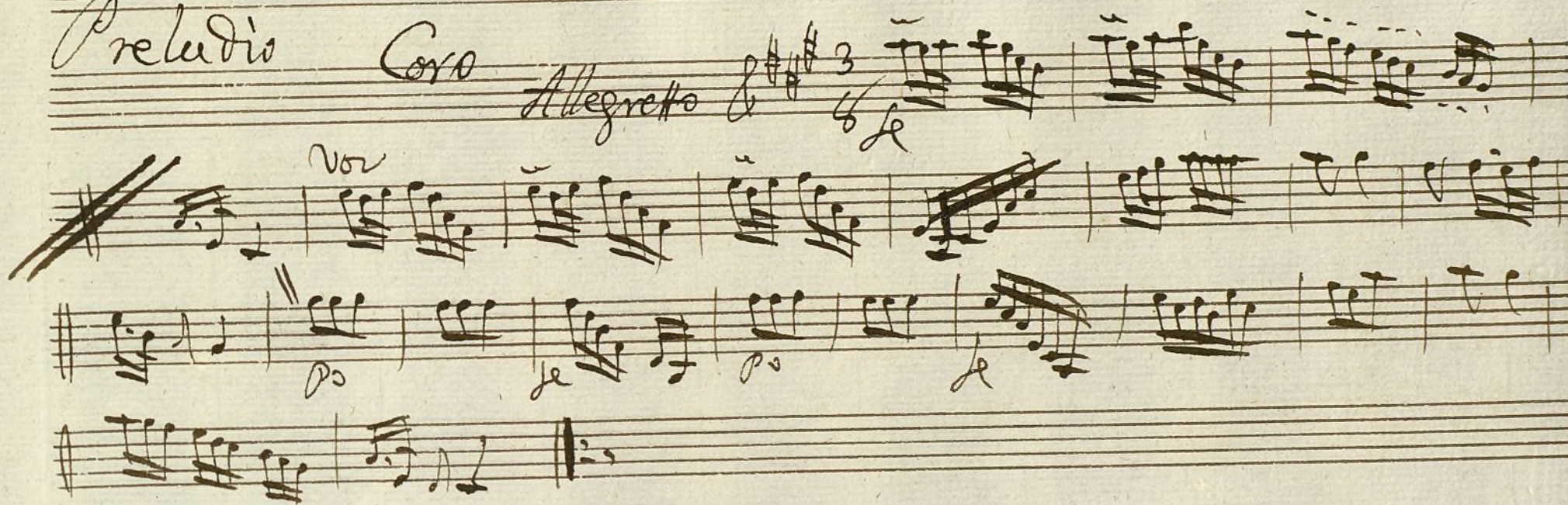


Preludio

Coro

Allegretto

$\frac{3}{4}$



V
lor
hon
en

Violin Primero Dupli.^{do} +

MUS. 21-8

Una Marcha En la Comedia; el Parecido de Tenez #

Los obos y

trumpas

en la 1.^a Tornado

Tornado 2.^o / Ad.^o

se empieza

Allegro la Marcha de la Comedia de Tenez

se repite al segno #

Volte

Tornada 3ª.

no

Coplas

And.^{te}

3/4



Repite al segno 4 veces

Copla

And.^{te}

2/4



Repite al segno 4

Preudio /

Ad.
And.
3/6

*Handwritten musical notation on four staves. The notation includes various notes, rests, and dynamic markings such as *voz* and *p.* There are some corrections and crossings out in the first staff.*

Handwritten signature or initials.

Ayuntamiento de Madrid

Violin Segundo

Mus 21-8

en la Comedia; el Parecido de Tenez //

Sornada 2^a //

Ad^o



~~Allegro Markato~~

se repite al segno //

Volvi

Jornada 3.^a

No Coplas Andte 3/4

Se Nuphian al Segno ~~de~~

Copla Andte 2/4

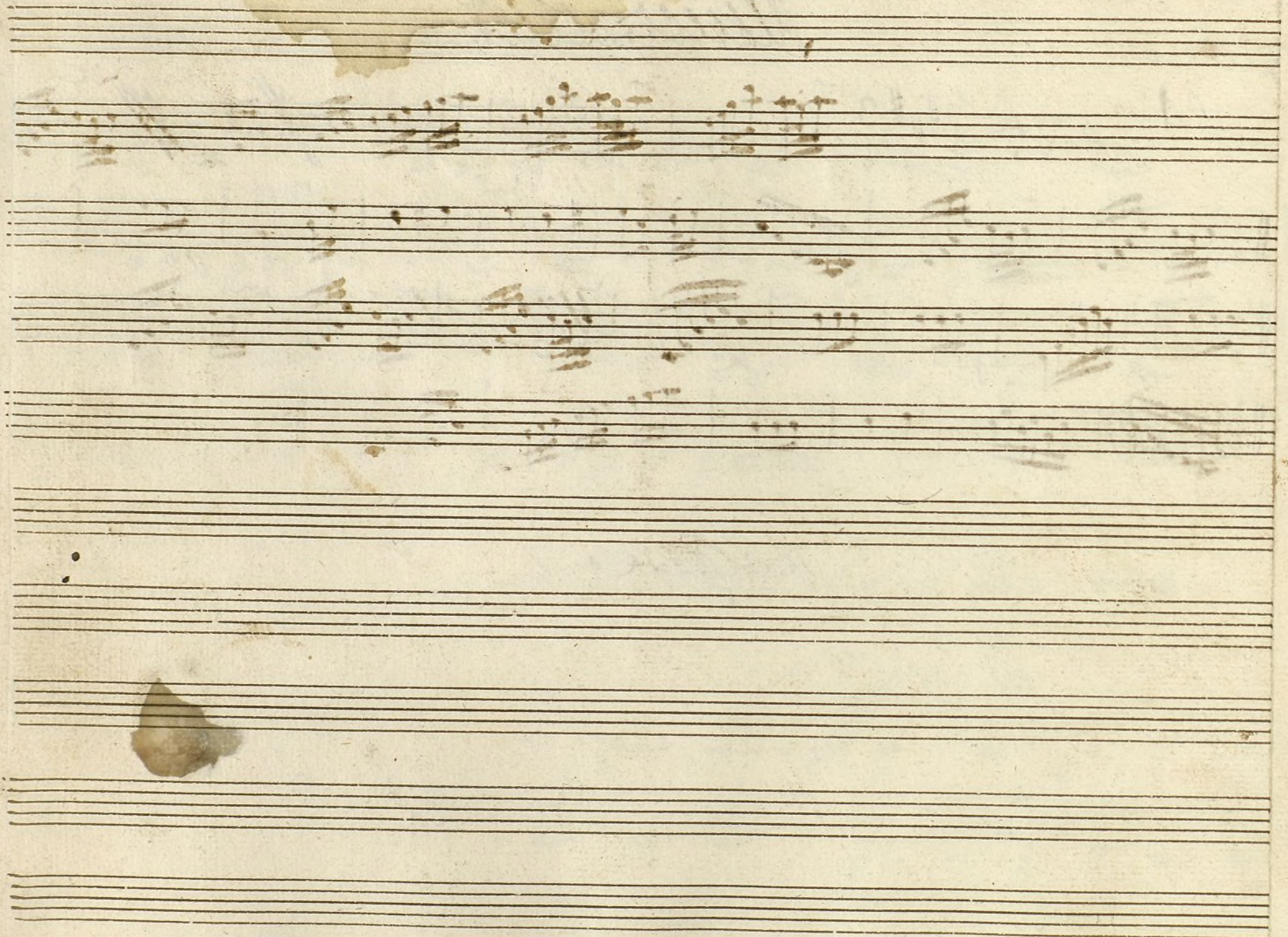
Se Nuphian al Segno

Preludio

~~Musical Manuscript~~



~~Se Repite~~



Violin Segundo

en la Comedia; El parezido de Turez.

Jornada 2.^a A 4.^o

Allegro

2/4

Terapite al segno //

Voln' 1.^o

Tornada 3.^a

No Coplas. / And.^{te} 3/4

Se repite al segno

Copla And.^{te} 2/4

Se repite al segno

Preludio

A 4^o

And.^{te}



sempre

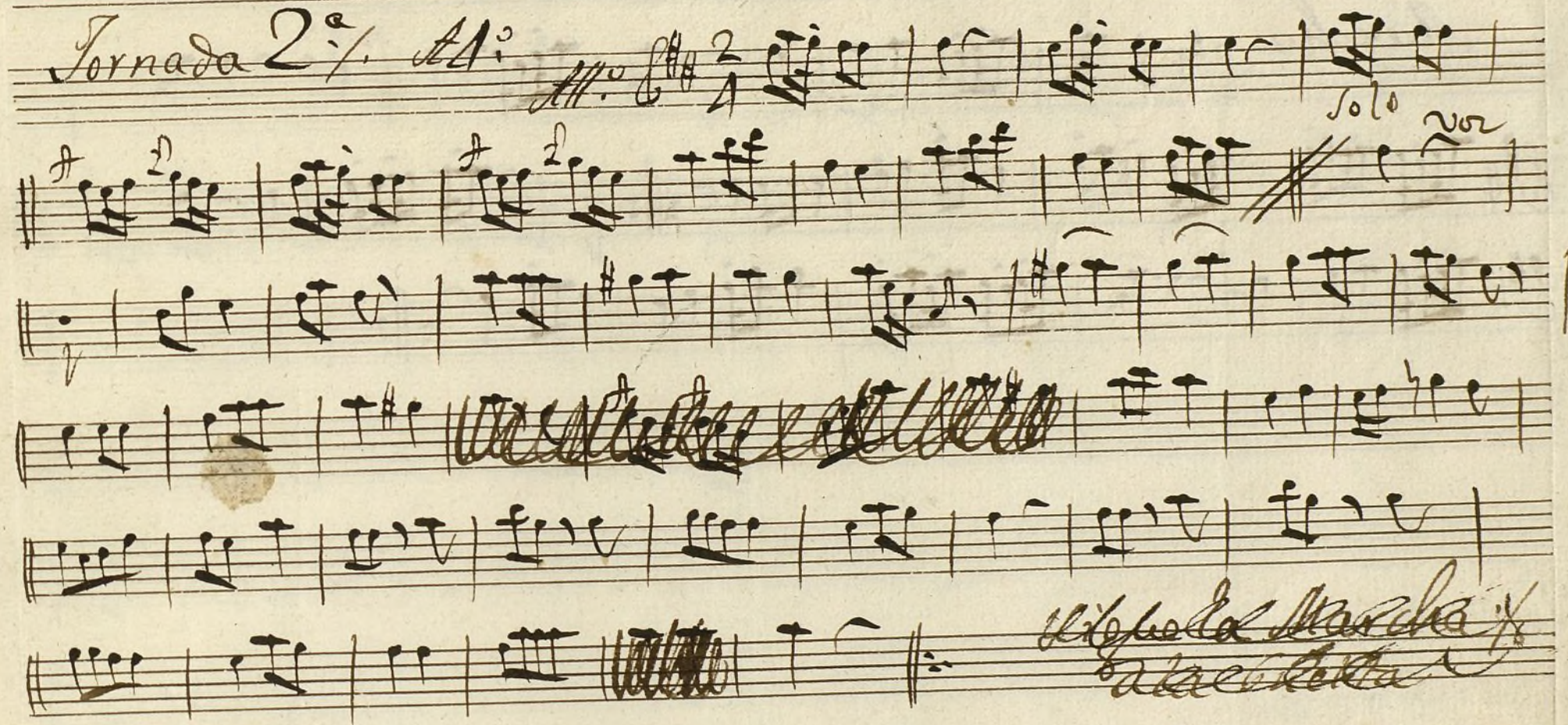
Ayuntamiento de Madrid

Oboe Primero

+ Marcha en la Tornado 1.^a

En la Comedia; el Parecido de Turez //

Tornado 2.^o Al:

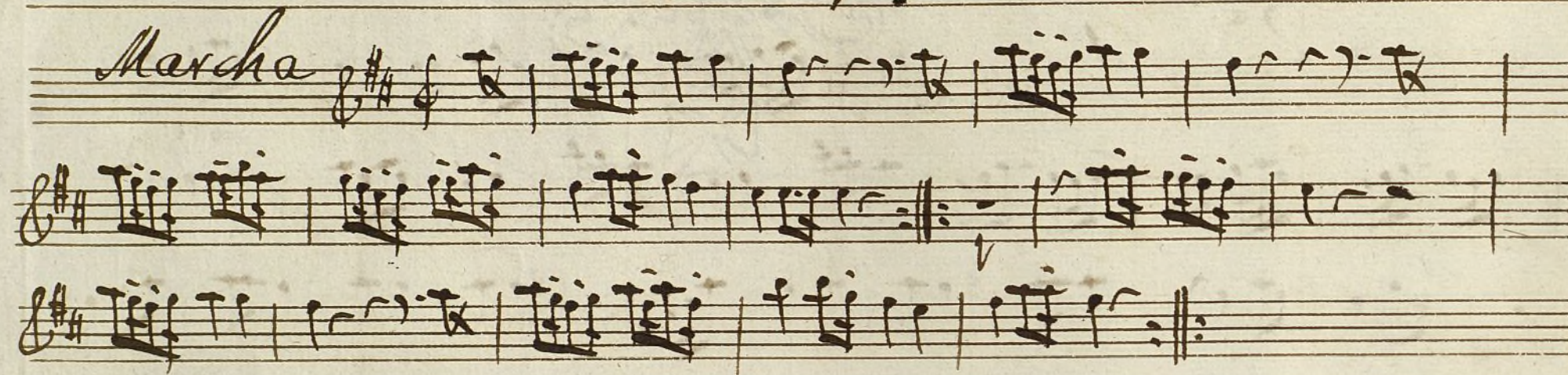


Se Verrá al segno #

Tornado 3.^a Coplas faze // Coro faze //

Tornada 1.^a

Marcha



oboe segundo.

+ Marcha en la Tornado 1.^a

En la Comedia; el Parecido de Lurez.

Tornado 2.^a Ad.^o

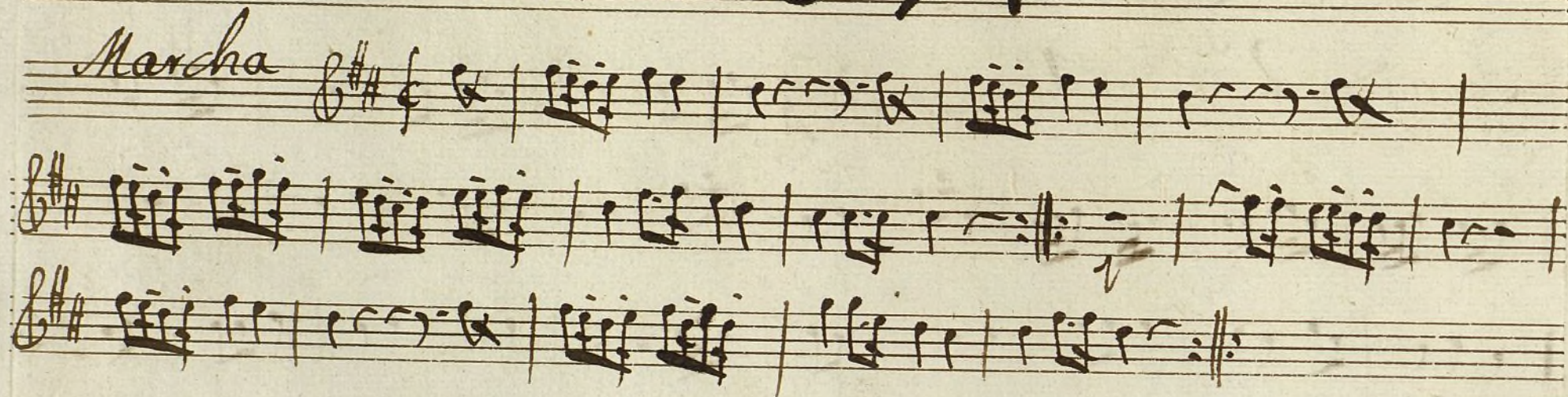
Handwritten musical score for oboe second part, Tornado 2.^a. The score is written on seven staves. The first staff begins with a treble clef, a key signature of one sharp (F#), and a 2/4 time signature. The music consists of eighth and sixteenth notes, with some rests. There are annotations 'solo' and 'voz' above the first and second staves respectively. The fourth staff contains a section of music that has been heavily crossed out with multiple diagonal lines. The sixth staff ends with a double bar line and the word 'fin' written below it. The seventh staff continues the musical notation.

Se repite al segno *

Tornado 3.^a Coplas Paze. Coro tace. //

Tornada 1^a

Marcha



Trompa Primera

+

Marcha en la Tornado 1^a

En la Comedia; el Parecido de Tenez.

Tornado 2^a Clarinet

All.^o

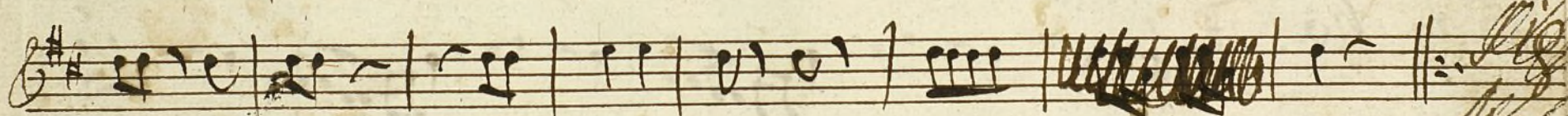
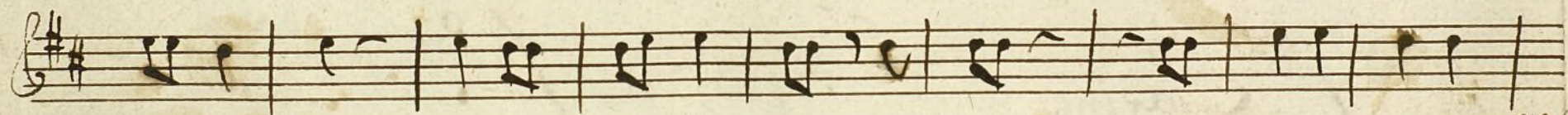
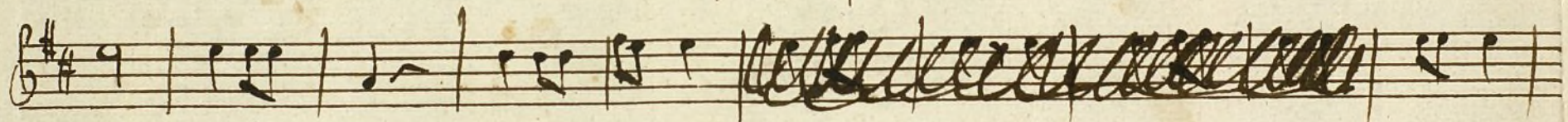
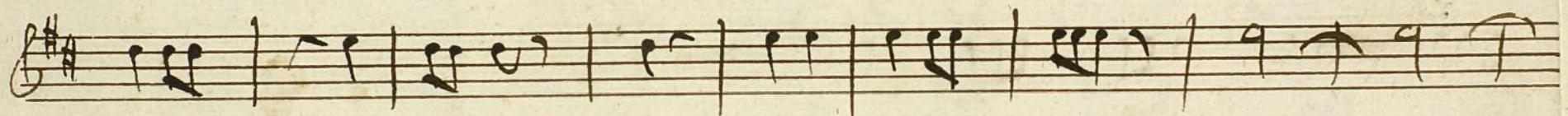
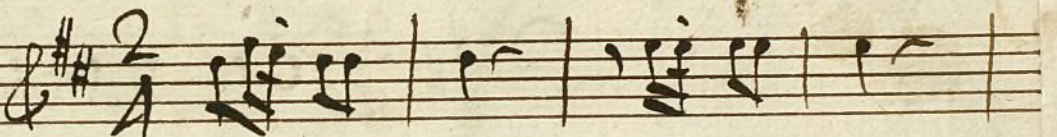


Fig. 100
Marcha
allegro

Se dirige al regno *

allegro

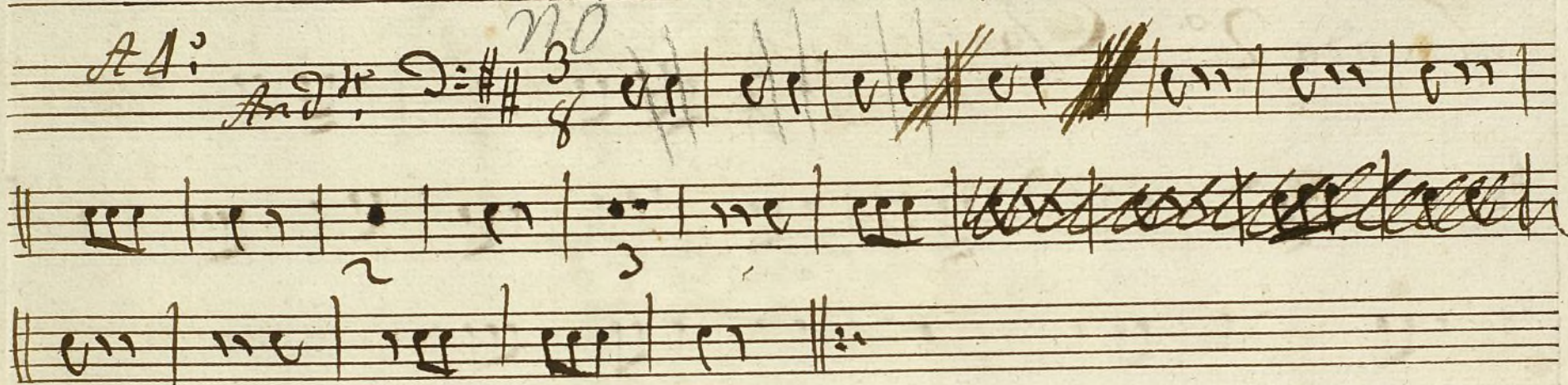
Tornado 3^a Coplas rae /.

Vol. 1

Tornada 1^a

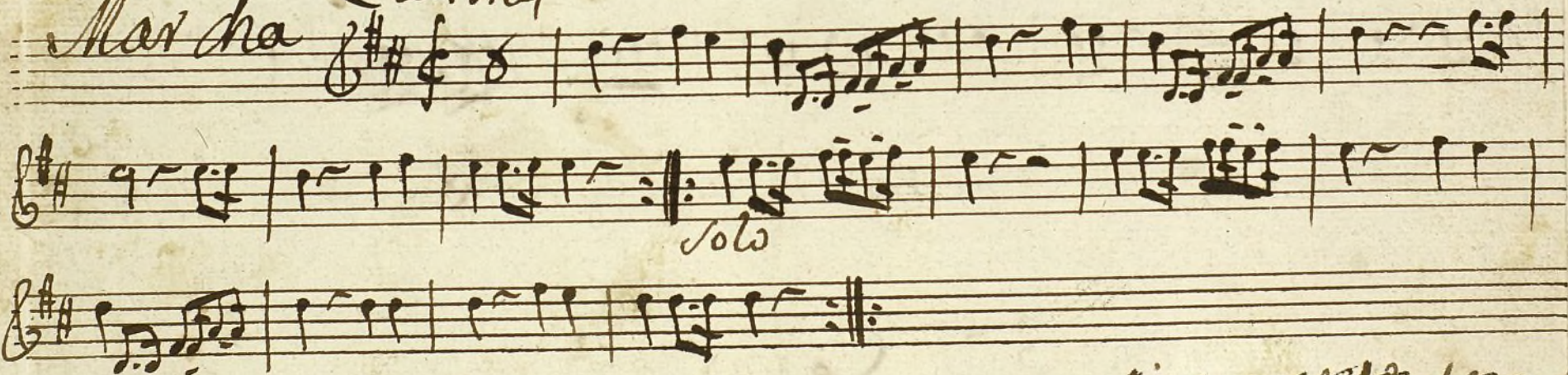
A 4^o

And.^{te} $\text{D}=\text{F}\#$ $\frac{3}{8}$



~~Letras de~~

Marcha Clarinet *Tornada 1^a*



Letras de

Trompa Segunda

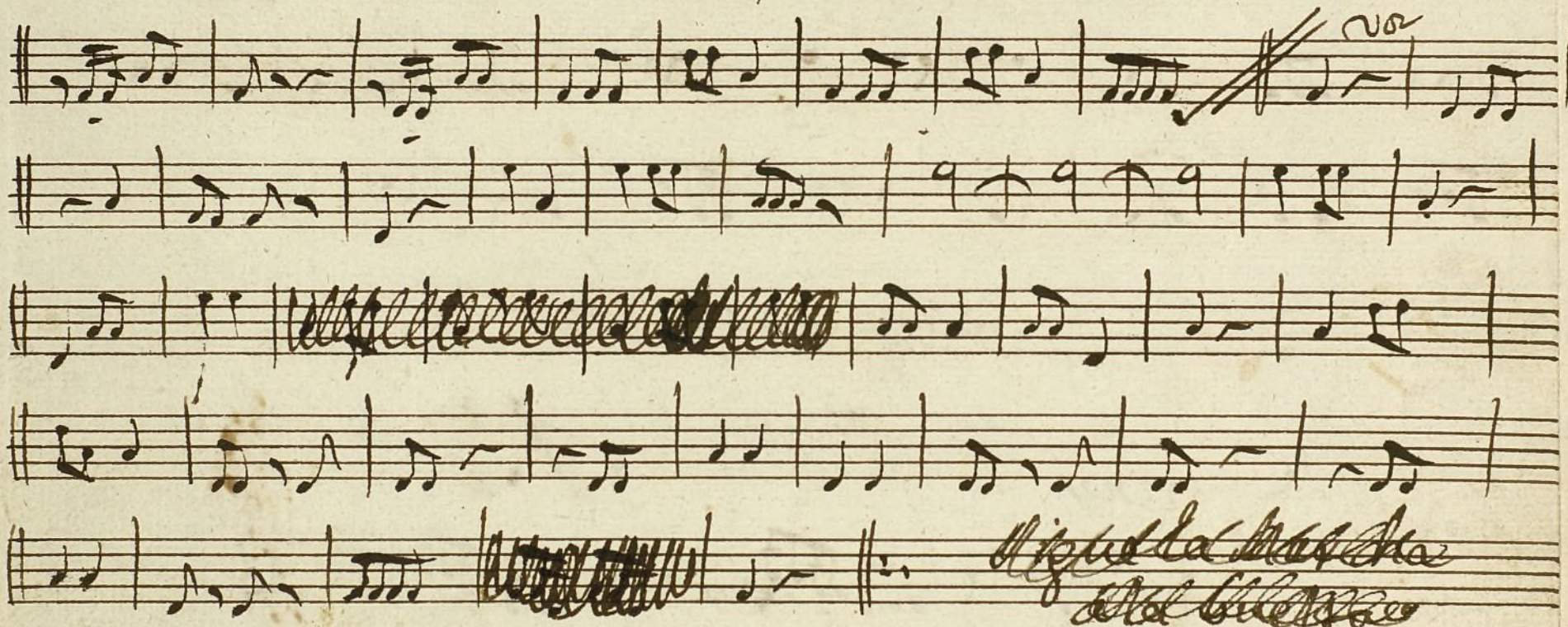
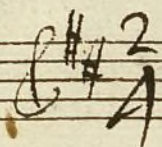
+

Marcha en la Tornado 1.^a

En la Comedia; el Parecido de Tunes //

Tornado 2.^a Clarines

All.^o



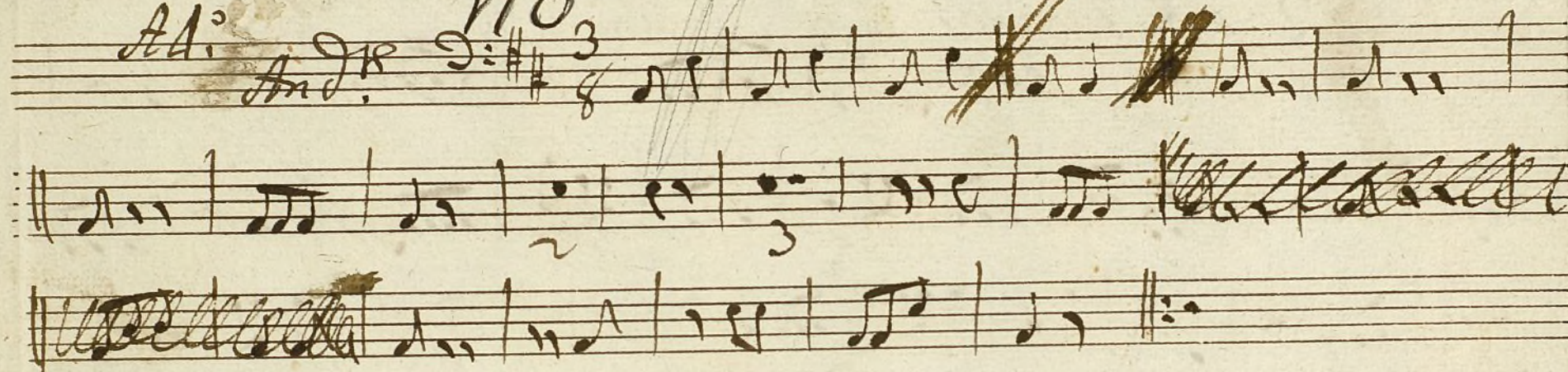
Se Repite al segno //

Tornado 3.^o Coplas taze //

Volte

Tornada 1.^a

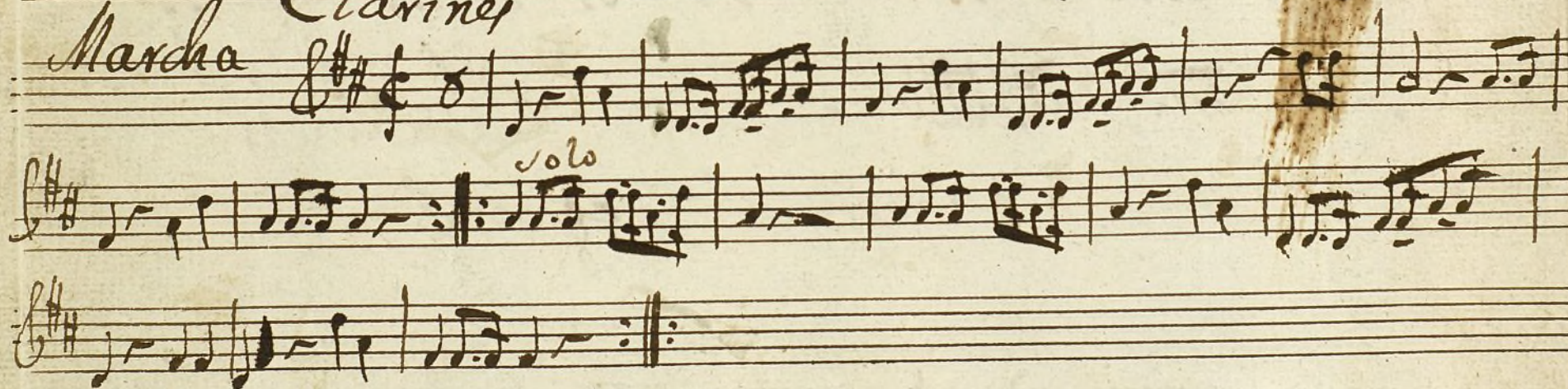
Ad.^o And.^{te} NO 3



se repite

Tornada 1.^a

Marcha Clarinet



Contravajo;

MUS 24-8

En la Comedia; el Parecido de Tenez //

Tornada 2^a.

Al:

Al:

2

2

2

2

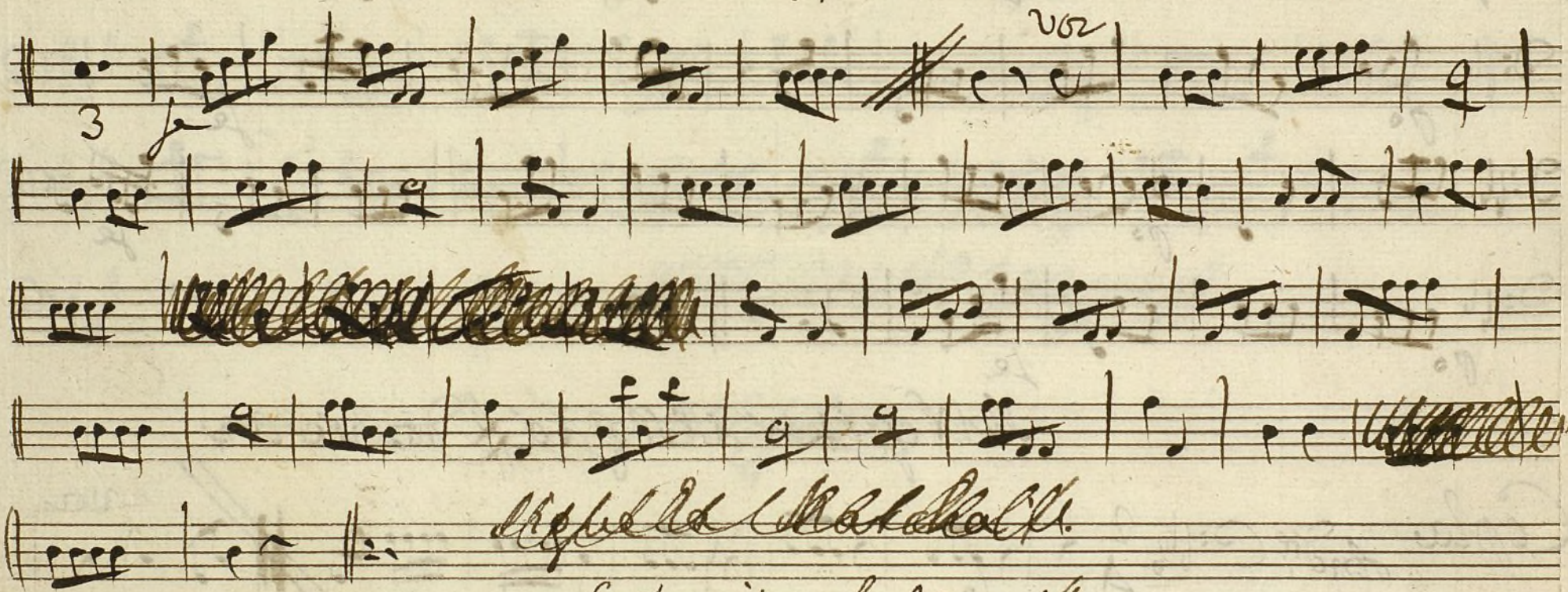
2

2

2

2

2



Allegro

Se repite al segno #

vol

Jornada 3^a

No. 10 Coplas And.^{te} 3/8

The image shows a handwritten musical score for a piece titled 'Coplas'. The notation is in a cursive, handwritten style. The first staff begins with a treble clef, a key signature of one sharp (F#), and a 3/8 time signature. The music is written in a cursive, handwritten style. The second and third staves continue the melody. The fourth staff ends with a double bar line and a repeat sign. There are some annotations in the margins, including 'p' and 'le'.

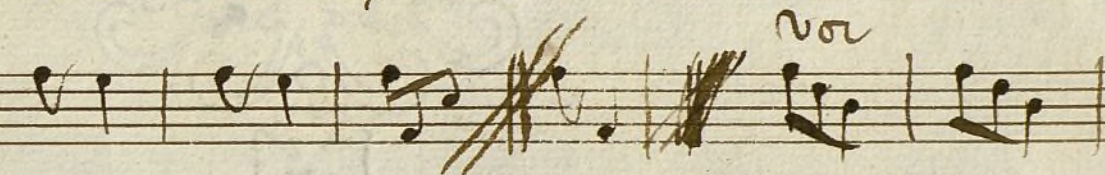
Ne Neffisen Allegro & brillante

Handwritten musical score for a piece titled "Copla And." in 2/4 time. The score is written on three staves. The first staff begins with a treble clef, a key signature of one flat (B-flat), and a 2/4 time signature. It contains several measures of music, including a double bar line and a repeat sign. The second staff continues the melody with various note values and rests. The third staff features a bass clef and continues the musical notation. Dynamics such as "p" (piano) and "f" (forte) are marked throughout the piece. The handwriting is in ink on aged paper.

Se respice al segno *

Conrad B. 4.

Preludio / A 1:

And $\text{D}:\sharp\sharp$ $\frac{3}{8}$ 

$\text{D}:\sharp\sharp$ 

$\text{D}:\sharp\sharp$ 

$\text{D}:\sharp\sharp$  ~~*Se Repite el Allegro*~~

Se Repite

