

Leg. 3. N.º 118. 24/

MUS 23-12 12

23-12

t

Leg. 1.º n.º 26

Musica

En la Comedia
de las Amazonas

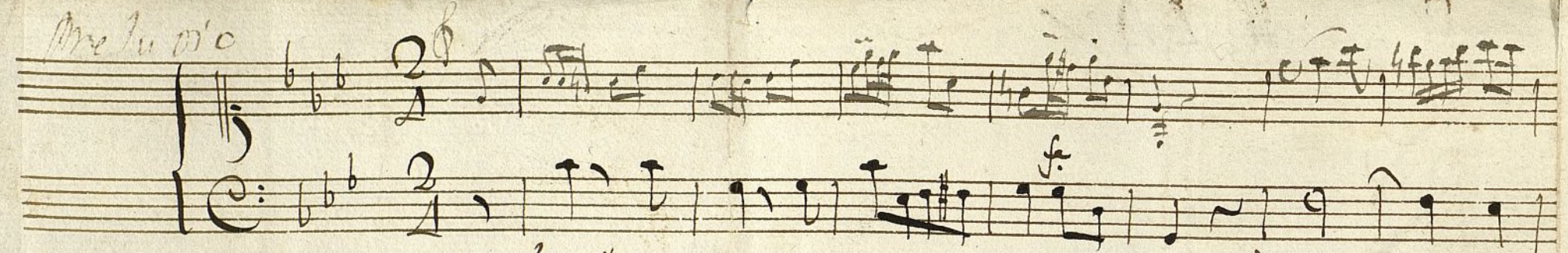
~

De Laseña:

Ayuntamiento de Madrid

12000 26342

Me lo oí

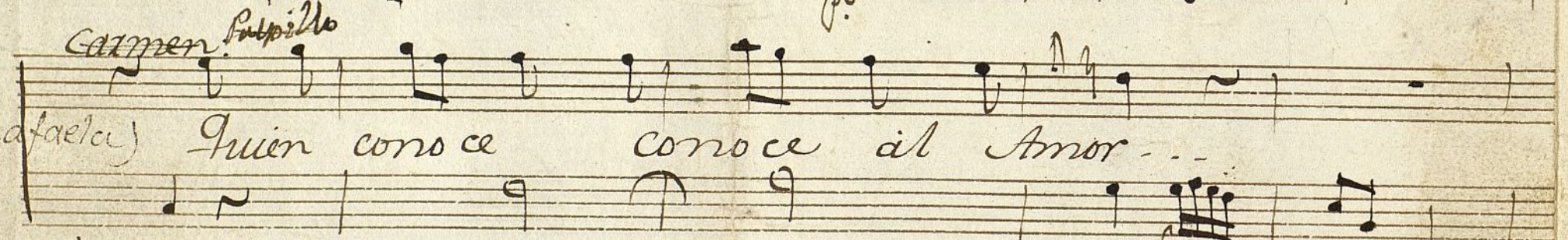


Man. la raboso



Magnina) Quien conoce al Amor muerta les-

Carmen Pulpiño



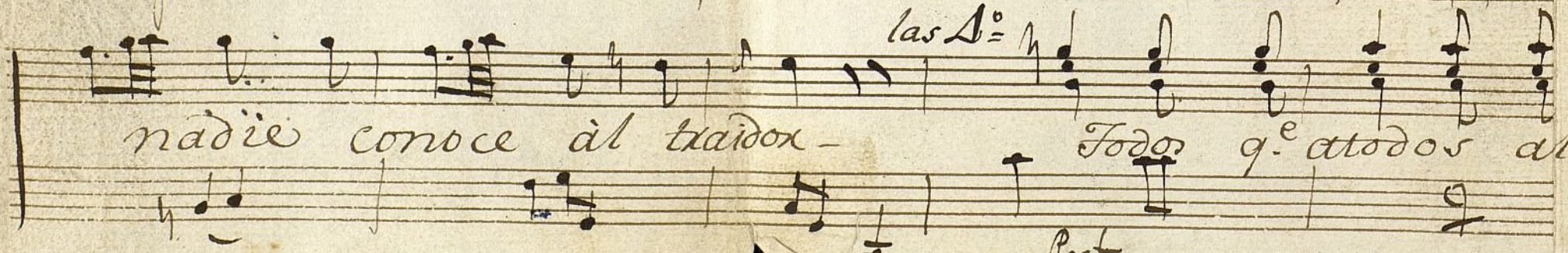
Rafaela) Quien conoce conoce al Amor...

Felipa Juana



Magna) Todos q. a todos al canzan sus males. Nadie que

las A.



nadie conoce al traidor. Todos q. a todos al

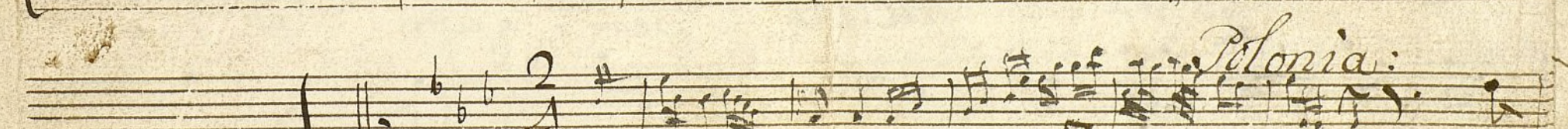
Poch.



Canzas sus males. Nadie que Nadie conoce al tral



dox. Conoze al traidor



Polonia:

Truaguna: A-

And^{te}



Al

mor = du do so acci dentes que xindes la lixer-
vã io q.º te ame na za oi q.º da ras a xuy
tad: que xindes. que xindes la lixertad -
rado oi q.º da ras a rrui'nado
Cuyo dolor es berdad = Cuya berdad siempre mie
y tu. ~~Ann~~ laes pi xi tu orgulloso ^{lograra} ~~ten~~ ~~da~~ sin desdicha
te: ^{Viva} Si le ignora el que = le siente: Quien co-
do q.º dan do felice lo ven zado de tu
nocera in traidor - queã vita con el o-
gran se me xidad ^{fundamento de Madrid} ban do tuympre

Chor: Engaña con las señales.
 Qad para escarmen tñ tu tu xia f. El q. a
 noce al Amor mortales. (Dio.ª) ... Quien conoce - Co-
 tu pi tex ace Coroin gu xia De la poe na
 noce al Amor. Todos q. a todos al canzan sus
 sea ce reo y no pue de su deso de go
 males. Nadie q. a Nadie conoce al traidor. Co
 zax de su yn mu mi dad de

preludio

noce al Amor.

su yn muni d'ad.

de d'amae

Man: la 11 70 gn di

And.^{te}

Guxen di-
Nadie-

contra amor se esfuerza
ce que la hexmo suxa-

que sus rayos- venga-
no puede mas que el sen

tibos-
tiao-

don de ay menos xesis tencia
o no seprecia de humano-

Sue len e-
o des pre-

7

xix mas remiso- don de ay menos Xesis tencia-
cia lo divino - ono se precia de humano-

Sue len exix: Sue len exix mas remiso-
O des precia- O des precia. lo divino -

Versos; y Rpte a la voz:.

Ma Manuela
1^a Gálvez
La Puadquina
1^a 1^a

La Torre
Calle Gálvez

Ma Manuela
1^a Gálvez
Ma Maria Garcia

La Torre
Calle Gálvez
Ma Manuela
1^a Gálvez
Ma Maria Garcia
1^a 1^a

Violin 1.º

Comedia .

Las Amazonas.

~

Preludio

2ª Jornada

And.^{te}

no

Poco f.

Verter

And.^{te}

Poco f.

Preludio



Versos, y Rep.^{te} a las dos
mañanas ~~q. d. d.~~

Ayuntamiento de Madrid

Violin N.º Comedia 1ª. Amazonas de

Preludio

La Zid III OJ

poco. Versos y Vol'n

t

~~Missa~~ Coplas

And^{te} 8/16 2

Handwritten musical score for 'Coplas' in 8/16 time, marked 'And^{te}'. The score consists of five staves of music. The first staff begins with a treble clef, a key signature of one flat (B-flat), and a 2/4 time signature. The music is written in a cursive, handwritten style. The second staff has a measure number '11' above it. The third staff has measure numbers '19' and '27' above it. The fourth staff has measure numbers '30' and '37' above it. The fifth staff has measure number '37' above it. The word 'Preludio' is written in a large, decorative script across the middle of the fifth staff.

And^{te} 3/4 2

Handwritten musical score for 'Preludio' in 3/4 time, marked 'And^{te}'. The score consists of three staves of music. The first staff begins with a treble clef, a key signature of one flat (B-flat), and a 2/4 time signature. The music is written in a cursive, handwritten style. The second staff has measure numbers '7' and '11' above it. The third staff has measure numbers '15', '17', '18', and '21' above it.

verso y Re
pite alar cor
raza.

6

Violin 2^o

Comedia

Las Amazonas.

2

2ª Formada

Preliolo

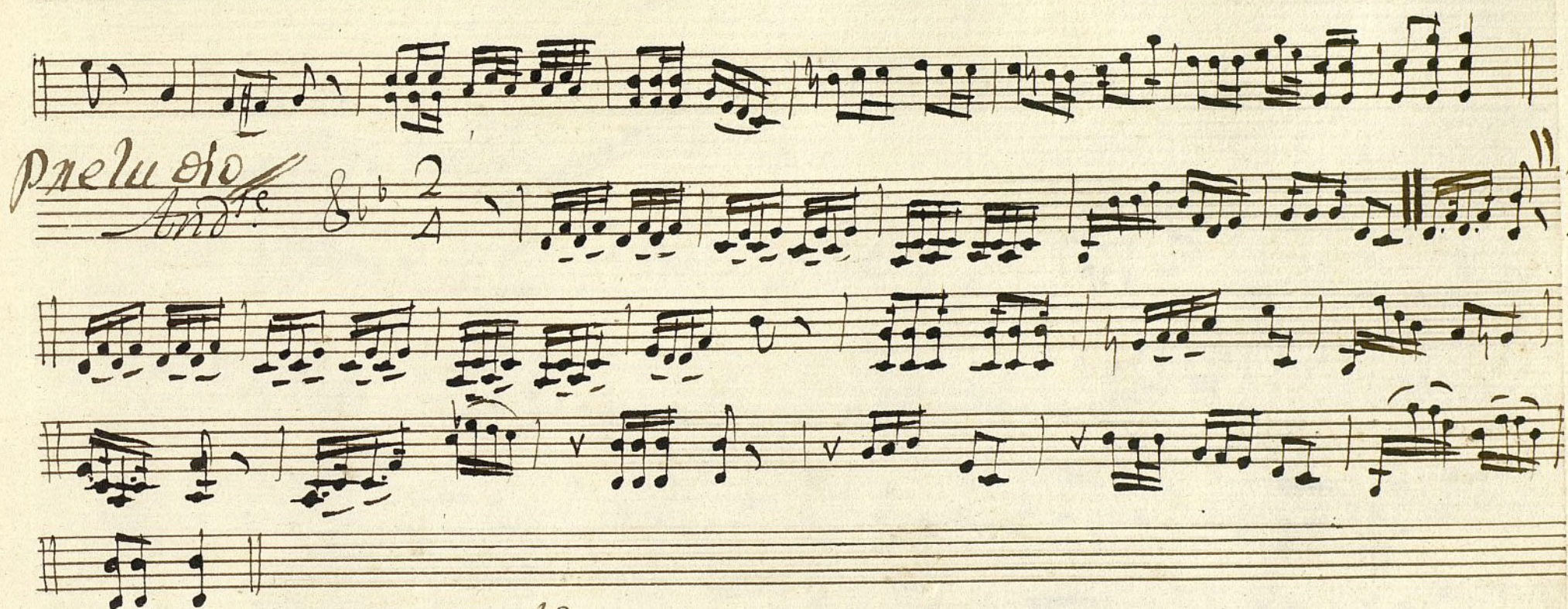
no

p.

Pocja

Verter

Andte



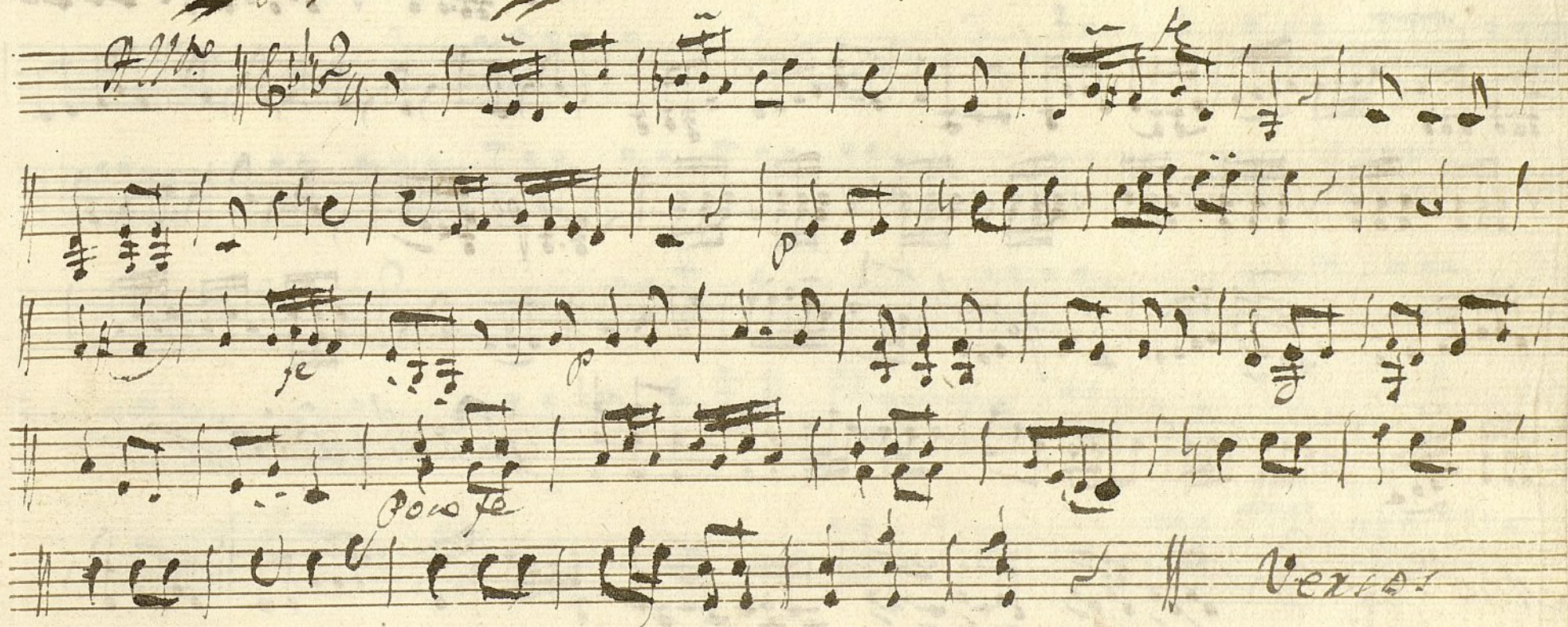
Versos: y Rep.^{te} a las dos veias:

Ayuntamiento de Madrid

2da Xornada

Violin 2.º Comedia La Amazona

~~Preludio~~



Vento

~~Andante~~ Coplas

And^{te} 8 6 2

Preluçio //

And^{te} 8 6 2

versos y Repite
a las cor rayer

2. X Pa

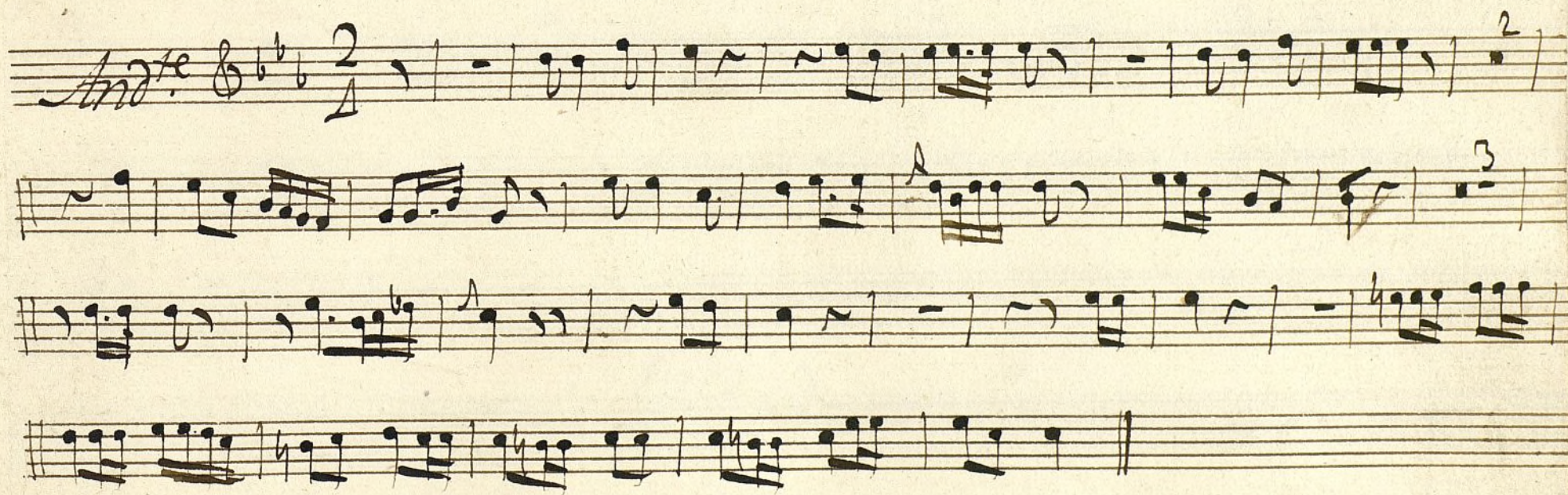
And.^{te} 2 Tace.



Ayuntamiento de Madrid

Oboe 2.^o Corn.^a las Amazonas.

2.^a Jornada

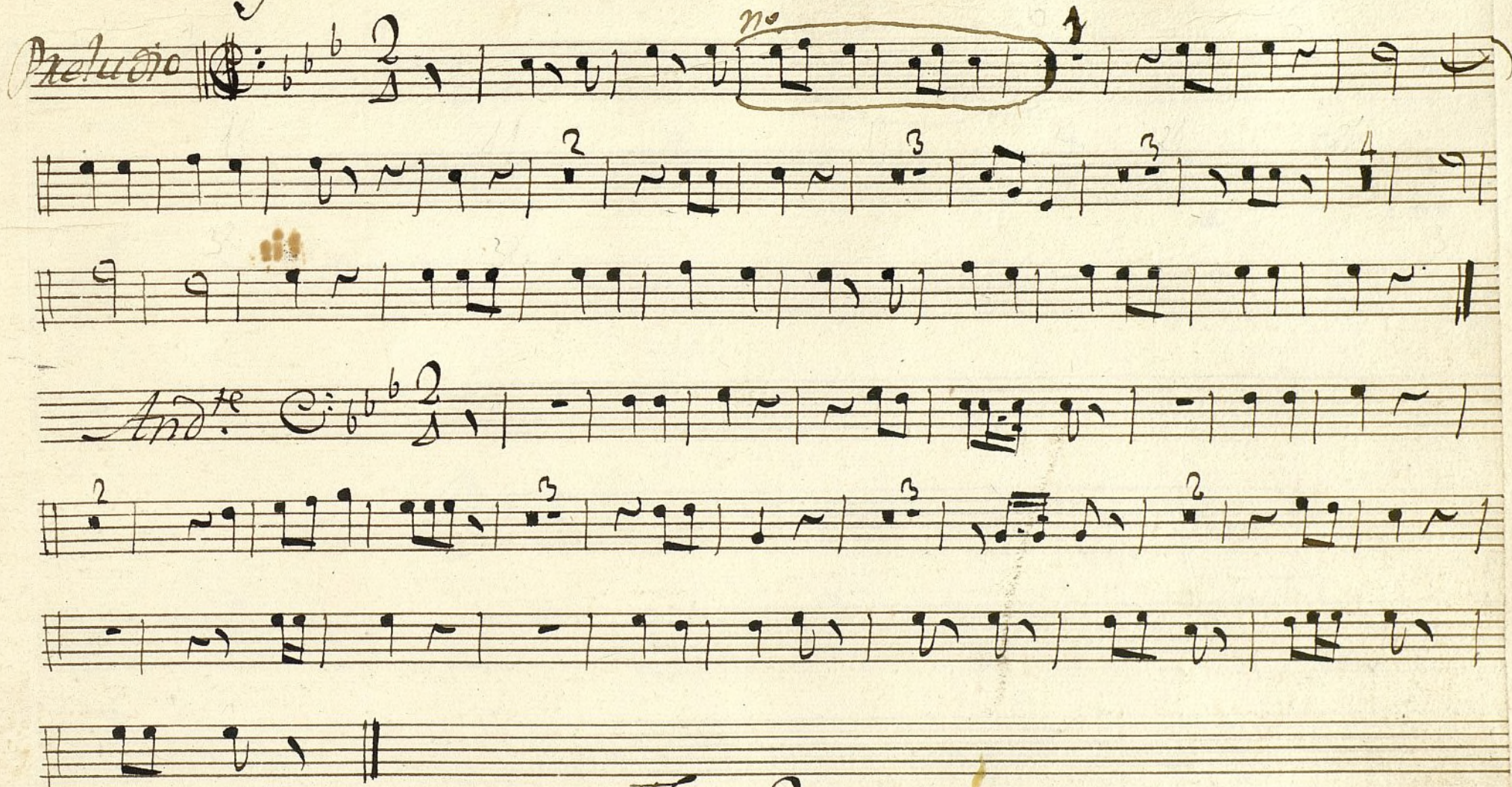


Face 2.

Ayuntamiento de Madrid

Trompa 1.^a Cor.^a las Amazonas.

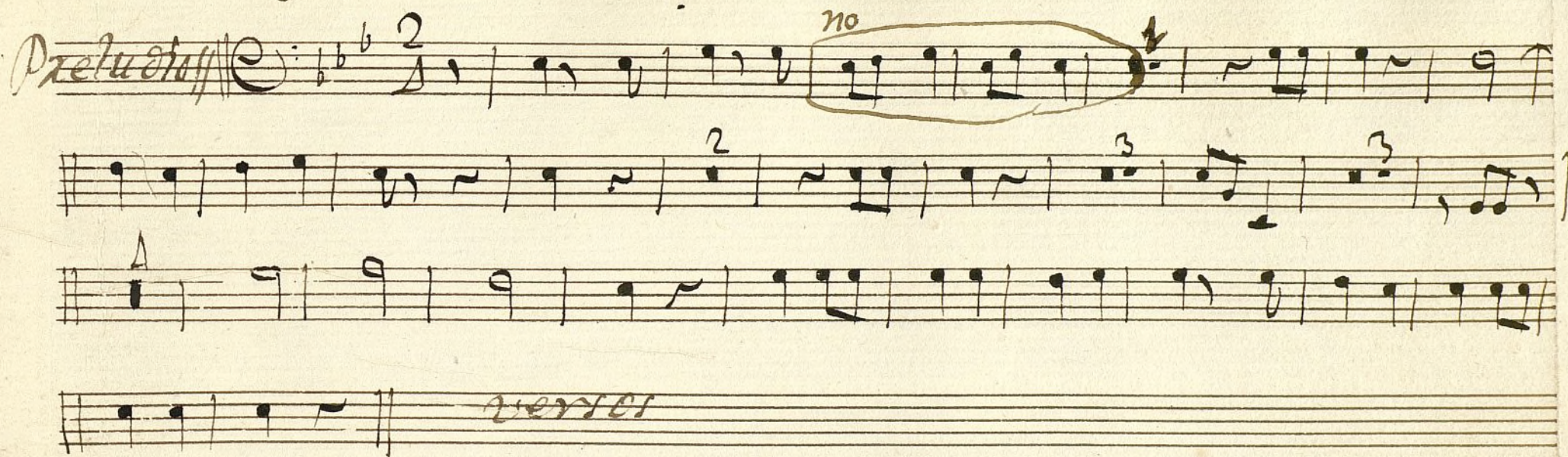
2.^a Cor.^a

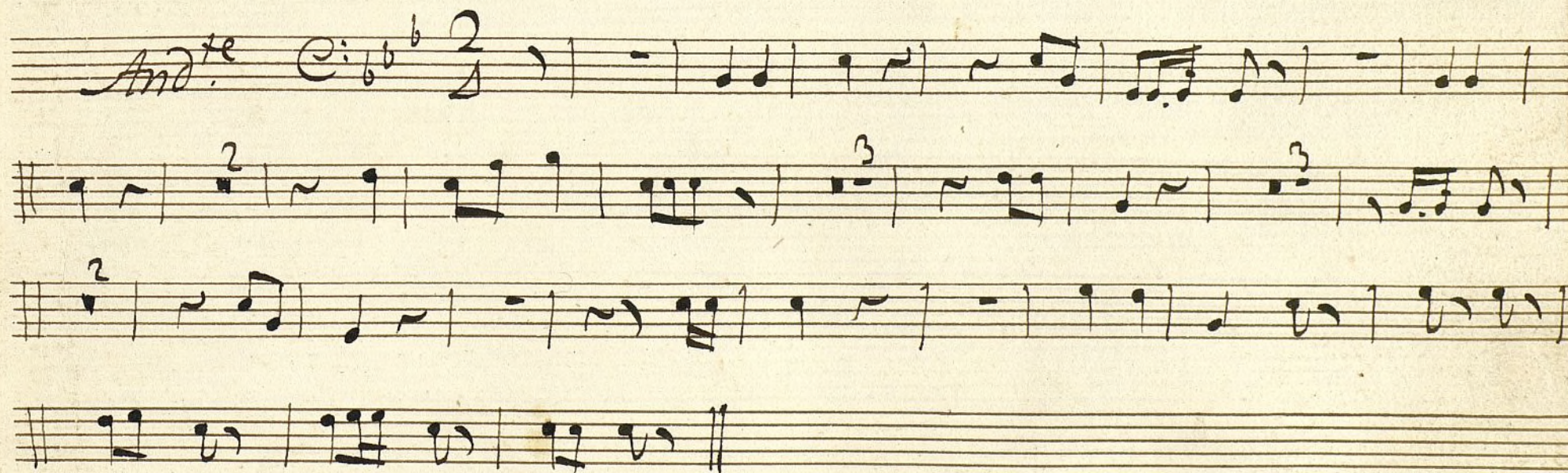
Preludio 

Vace 2.

112

Trompa 2.^a Com.^a las Almarazas. 2.^a Norma da

Preludio 

And.^{te} 

Face Coplas

Ayuntamiento de Madrid

A

Baxo

Com.^a

∥

Las Amazonas

~

2ª. Xornada

Preludio

Handwritten musical score for a Preludio, 2ª. Xornada. The score is written on ten staves. The first system consists of four staves, and the second system consists of six staves. The key signature is one flat (B-flat) and the time signature is 2/4. The notation includes various musical symbols such as notes, rests, accidentals, and dynamic markings like 'f.', 'p.', and 'Poco f.'. The word 'Versos' is written at the end of the fourth staff. The score is written in a cursive, handwritten style.



Versos y repite alaboz

Ayuntamiento de Madrid

Leg^o 5. n. 18.

t

Bajo

Comedia

Las Amazonas

~

2^a X. da

Preludio

Handwritten musical score for a Preludio. The score is written on ten staves. The first staff begins with a treble clef, a key signature of two flats (B-flat and E-flat), and a time signature of 2/4. The first measure is marked with a double bar line and a repeat sign. The first staff contains a section of music that is circled and labeled "no" above it. The second staff begins with a treble clef and a key signature of two flats. The third staff begins with a treble clef and a key signature of two flats. The fourth staff begins with a treble clef and a key signature of two flats. The fifth staff begins with a treble clef and a key signature of two flats. The sixth staff begins with a treble clef and a key signature of two flats. The seventh staff begins with a treble clef and a key signature of two flats. The eighth staff begins with a treble clef and a key signature of two flats. The ninth staff begins with a treble clef and a key signature of two flats. The tenth staff begins with a treble clef and a key signature of two flats. The score concludes with a double bar line and a repeat sign.

no

Post.

Versor

And^{te}



Preludio

And^{te}

voz:

f.p.

Versos y rep.^{te} a la voz =

Ayuntamiento de Madrid