

20-29.

Mus 20-29

1

Leg.^o 2.^o Num.^o 20.

7



Musica en la Comedia

Las Buzas en el Amor

Del S.^{or} Laserna

1807

Ayuntamiento de Madrid

1200026420

Tornada 1.^a

Tiples 1.^o

Coro

Tiples 2.^o y Tenores

Bap.

a don de es tas es pe
a don de es tas es pe
a

Handwritten musical score for two voices, first system. The music is written on two staves. The lyrics are: *ranza que huyes de mi fan ta sia*. The notation includes a treble clef, a key signature of one sharp (F#), and a common time signature (C). The melody is written in a cursive hand.

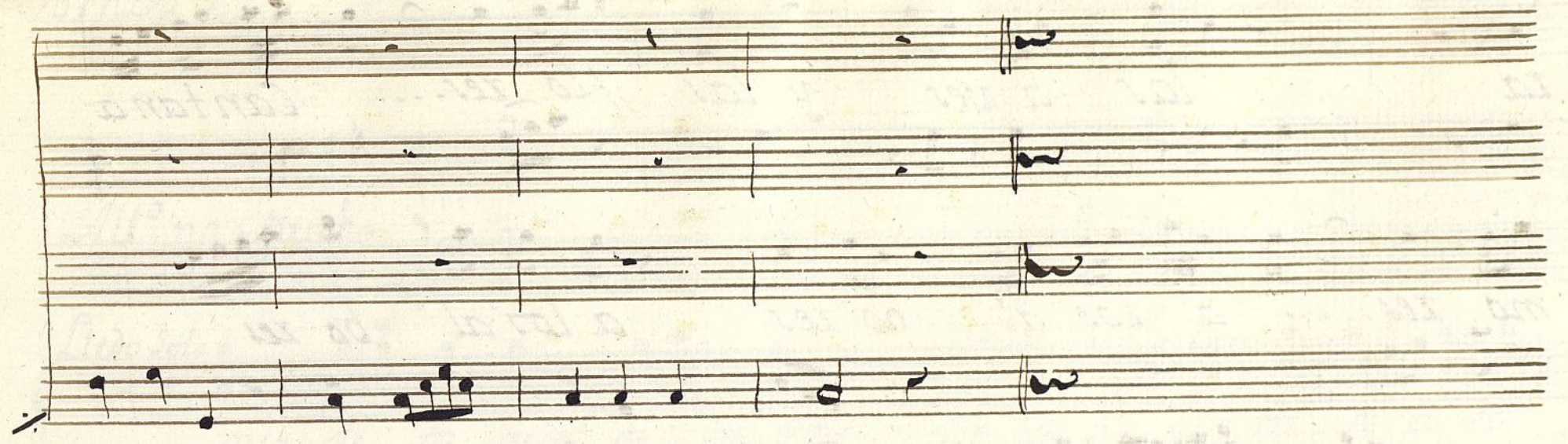
ranza que huyes de mi fan ta sia

Handwritten musical score for two voices, second system. The music is written on two staves. The lyrics are: *Quando la for tu na mia Pul soen ti mi*. The notation includes a treble clef, a key signature of one sharp (F#), and a common time signature (C). The melody is written in a cursive hand.

Quando la for tu na mia Pul soen ti mi

Handwritten musical score for two voices, first system. The top staff has lyrics: *Con fi an za Pu soen ti mi Con fi*. The bottom staff has lyrics: *Con fi an za Pu soen ti mi Con fi*. Both staves feature a treble clef and a key signature of one flat (B-flat). The music is written in a cursive, handwritten style with various note values and rests.

Handwritten musical score for two voices, second system. The top staff has lyrics: *an... za pu soen ti mi con fi an... za*. The bottom staff has lyrics: *an... za pu soen ti mi Con fi an... za*. Both staves feature a treble clef and a key signature of one flat (B-flat). The music is written in a cursive, handwritten style with various note values and rests.



L'edò sola *L'edò sola* is written in a cursive hand. It is followed by a musical staff with a treble clef, a key signature of one sharp (F#), and a 2/4 time signature. The staff contains several measures of music, including whole notes and rests.

au xa au xa au xa su til que is written in a cursive hand. It is preceded by a musical staff with a bass clef and a 2/4 time signature. The staff contains a melodic line with eighth and sixteenth notes. The lyrics are written below the staff.

Lau xa... dulce tau xa la pri ma ve... is written in a cursive hand. It is preceded by a musical staff with a bass clef. The staff contains a melodic line with eighth and sixteenth notes. The lyrics are written below the staff.

Guion de Musica de la Comedia las Burlas
en el Amor

Jornada 1.^a

Como a donde estas esperanza
q^e huies de mi fantasia
Quando la fortuna mia
Puso enti mi Confianza..2

Lledo.. Aura Aura
aura sutil q^e laura
dulce Vestaura
la primavera
las Aves y las flores
cantan amores
a los albores...1.
de luz mas bella...1.

Tornada 2ª

Lledo ... quedito que dito Abejuela
pasito pasito detente
que no en todas flores ... s.

Los ambazes viven
Los Nectares crecen
que dito pasito
no sea q.^o encuentres
el torigo en Copa { ... s.
de purpura y Nieve }
de purpura y Nieve

todas ... que dito pasito
no sea q.^o encuentres
el torigo en Copa { ... s.
de Purpura y Nieve }
de Purpura y Nieve

verso

Copla 1ª

Lledo-----Notefies notefies avepuéla
del exoplendor aparente
pues entre flores q^a adulan
aspides hai q^e acometen }-s.

quedito pasito
nosea q^e encuentres

toda. el tosigno en Copa {
de purpura y Niebe }
de purpura y Niebe }

versos

Copla 2ª

Lledo-----No creas no creas Seguridades
q^e alagan mañosa mente
que los riesgos lo fabrica }-s.
quien Confia y quien no teme
quedito pasito
nosea q^e encuentres

toda. el tosigno en Copa {
de purpura y Niebe }
de purpura y Niebe }

versos

Copla 3ª

Lledo. Quando liber quando liber dela Rora

los Macaxer florecientes
hallaras q.^a lo q.^a atrae {
cerca estadelo que quiere {
quedito pasito
no sea q.^a encuentres

todas el torigo en Copa {
de purpura y Niebe {
de purpura y Niebe {

Verson

Como Quedito Pasito
no sea q.^a encuentres
el torigo en Copa {
de purpura y Niebe {
de purpura y Niebe {

Tornada 3^a

Como desame moriz callando
a morosa fantasia
queen las penas ya es vencerlas
Conformarse en el sentir las ... 2

Handwritten musical score on aged paper, featuring four systems of staves. The lyrics are written in a cursive script below the notes. The first system contains the lyrics "ra las a ver y las flo_xer.... Cantan a". The second system contains "mo_xer.... a los al bo_xer a los al bo_xer". The third system contains "de... luz mas be... lla de luz mas be...". The fourth system contains "lla". The score includes various musical notations such as notes, rests, and bar lines. There are also some markings like "cres" and "f" below the staves. The paper shows signs of age, including discoloration and wear at the edges.

ra las a ver y las flo_xer.... Cantan a

mo_xer.... a los al bo_xer a los al bo_xer

de... luz mas be... lla de luz mas be...

lla

cres f

Tornada 2^a

All^o no Mucho

Liedo Sola

que di to que di to A be jue la Pa si to Pa

si to de ten te que noen to das flo res que

noen to das flores los amba res vi ven los Nec ta res

Handwritten musical score on aged paper, featuring five systems of music. Each system consists of a vocal line (treble clef) and a piano accompaniment line (bass clef). The lyrics are written in Spanish. The first system has a key signature of one sharp (F#) and a common time signature (C). The second system has a key signature of one sharp (F#) and a common time signature (C). The third system has a key signature of one sharp (F#) and a common time signature (C). The fourth system has a key signature of one sharp (F#) and a common time signature (C). The fifth system has a key signature of one sharp (F#) and a common time signature (C). The lyrics are: "cre... cen que di to pa si to no se a queen", "cuen ties el to si open co pa de Pux puxay Nie be el", "to si open co pa de Pux puxay Nie be de Pux puxay Nie ve", "todas. que", and "que".

cre... cen que di to pa si to no se a queen

cuen ties el to si open co pa de Pux puxay Nie be el

to si open co pa de Pux puxay Nie be de Pux puxay Nie ve

todas. que

que

Di to pa si to no se a queen Cuentres el to si goen Co pa de

di to pa si to no sea queen cuentres el to si goen Co pa de

Pux pu ray Nie be el to si goen Co pa de Pux pu ray Nie be de

Pux pu ray Nie be el to si goen Co pa de pux pu ray Nie be de

Puz pu xai Nie - - be
 Puz pu xay Nie be.

Copla 1.^a
 Copla 2.^a
 Copla 3.^a
 Al mismo Aire

Llevo

1ª... No te fi... es no = te fies a be jue la

2ª... No creas no creas se guri da des

3ª... quan do li bes quan do li bes de la ro sa los

del es plen dor a pa ren te pues en tie flo res

que al a gan Ma ño sa men te que los vies gos

Na ca res flo re cien tes ha lla ras que

quea - - - du lan as pi des hai - - - quea co me ten
 los fa bri ca quien con fia y quien no te me
 - - - lo quea trae cerca es ta de lo que quie re

Pues en tre flo - - - res quea du lan as pi des hai - - -
 que los ries por los - - fa bri ca quien con fi a y
 ha lla ras que lo - - quea trae cerca es ta de

quea co me - - - ten que di to Pa si to

quien no te - - - me que di to Pa si to

Lo que queie - - - ze que di to pa si to

Coro Todas

no sea queen cuen tres

no sea queen cuen tres el to si goen

no sea queen cuen tres el to si goen

co pa de pur pu ray Nie be el to si go en co pa de

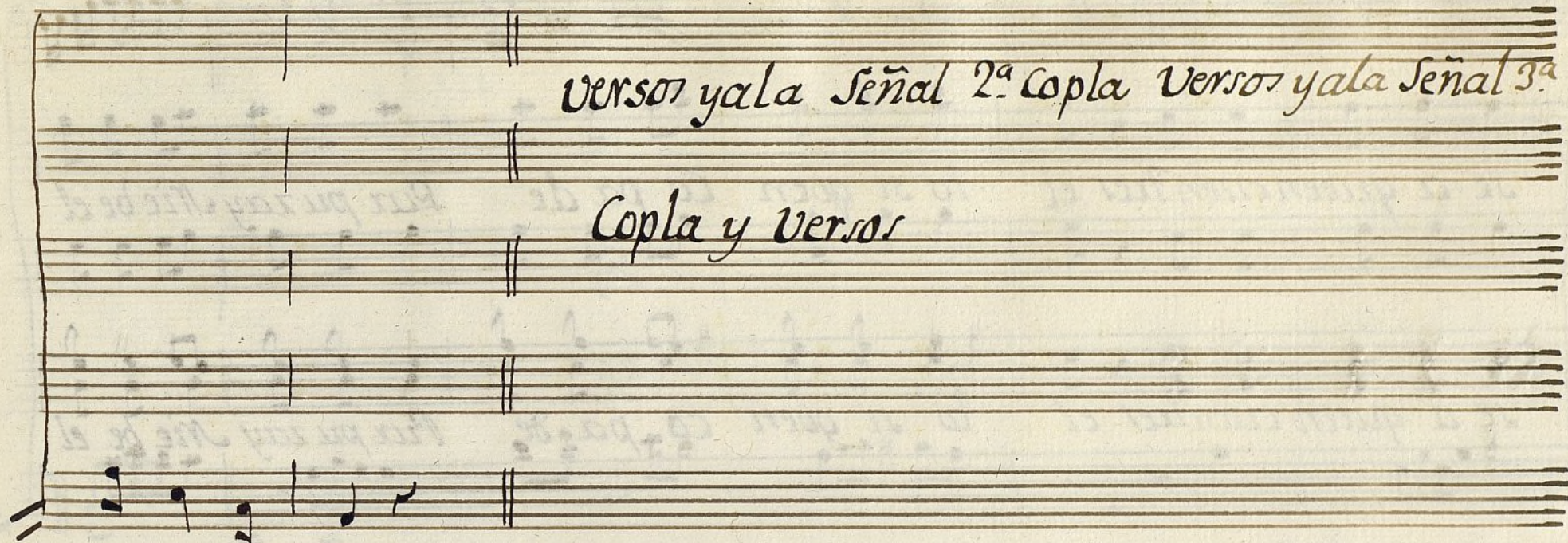
Co pa de pur pu ray Nie be el to si go en co pa de

Pur pu ray Nie be de pur pu ray Nie - be

Pur pu ray Nie be de pur pu ray Nie be

Versos y ala Señal 2ª Copla Versos y ala Señal 3ª

Copla y Versos



todas

que di to pa si to no

que di to pa si to no

Allº no Mucho

Handwritten musical notation for a song. It features a piano accompaniment on the left with four staves (treble and bass clefs) and a vocal line on the right with a single staff. The time signature is 2/4. The lyrics are "que di to pa si to no" repeated twice. The first instance is on the vocal line, and the second is on the piano line. The tempo/mood is indicated as "Allº no Mucho".

se a queen cuen ties el to si goen Co pa de Pux puxay Nie be el

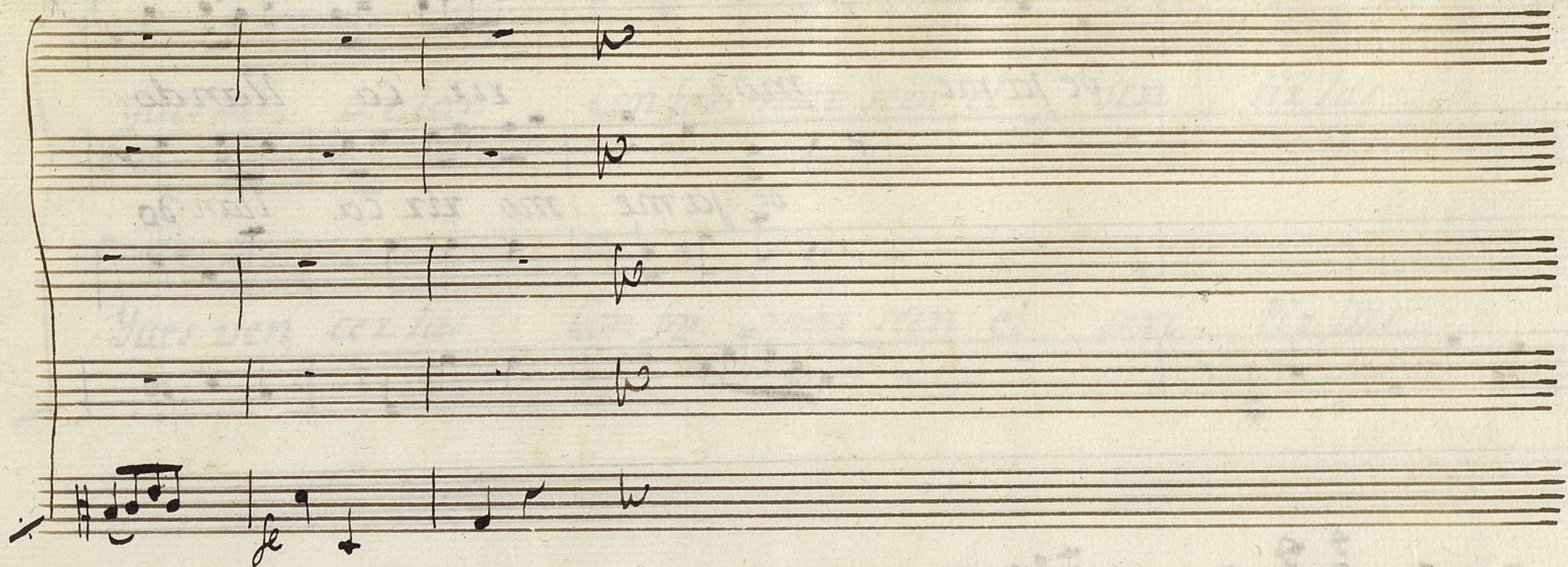
se a queen cuen ties el to si goen Co pa de Pux puxay Nie be el

This system contains the first two staves of a handwritten musical score. The top staff features a vocal line with various note values and rests. The bottom staff provides a harmonic accompaniment with chords and single notes. The lyrics are written in a cursive script between the staves.

to si goen Co pa de pux puxay Nie be de Pux puxay Nie ve

to si goen Co pa de pux puxay Nie be de Pux puxay Nie - - ve

This system contains the next two staves of the musical score. The notation continues with similar rhythmic patterns. The lyrics are split across the two staves, with the bottom staff ending in a double dash to indicate a long note or a continuation.



Nornada 3.^a

Coxo

7
Tipler J.^o

triples 2^o y teno^s

Вайон



de ja me mo xir ca llando

de ja me mo xir ca llan do

The first system of the handwritten musical score consists of two staves. The top staff contains the lyrics 'de ja me mo xir ca llando' written in a cursive hand. The bottom staff contains the lyrics 'de ja me mo xir ca llan do'. Both staves have musical notation, including notes, rests, and bar lines. The paper is aged and slightly discolored.

a mo xo sa fan ta si a queen las pe nas

a mo xo sa fan ta si a queen las pe nas

The second system of the handwritten musical score also consists of two staves. The top staff contains the lyrics 'a mo xo sa fan ta si a queen las pe nas'. The bottom staff contains the lyrics 'a mo xo sa fan ta si a queen las pe nas'. Both staves have musical notation, including notes, rests, and bar lines. The paper is aged and slightly discolored.

Handwritten musical score for two voices, first system. The top staff is for a soprano voice and the bottom staff is for an alto voice. Both parts begin with a treble clef and a key signature of one sharp (F#). The lyrics are written below each staff. The music consists of quarter and eighth notes, with some rests.

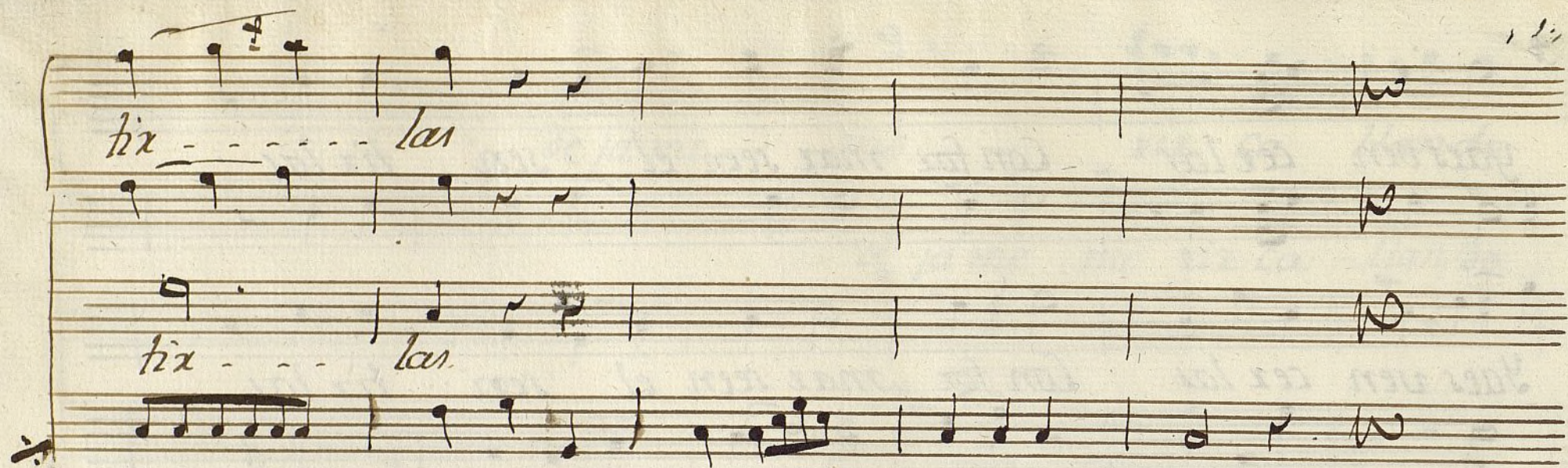
yaes ven cer las Con fox max seen el sen tix las

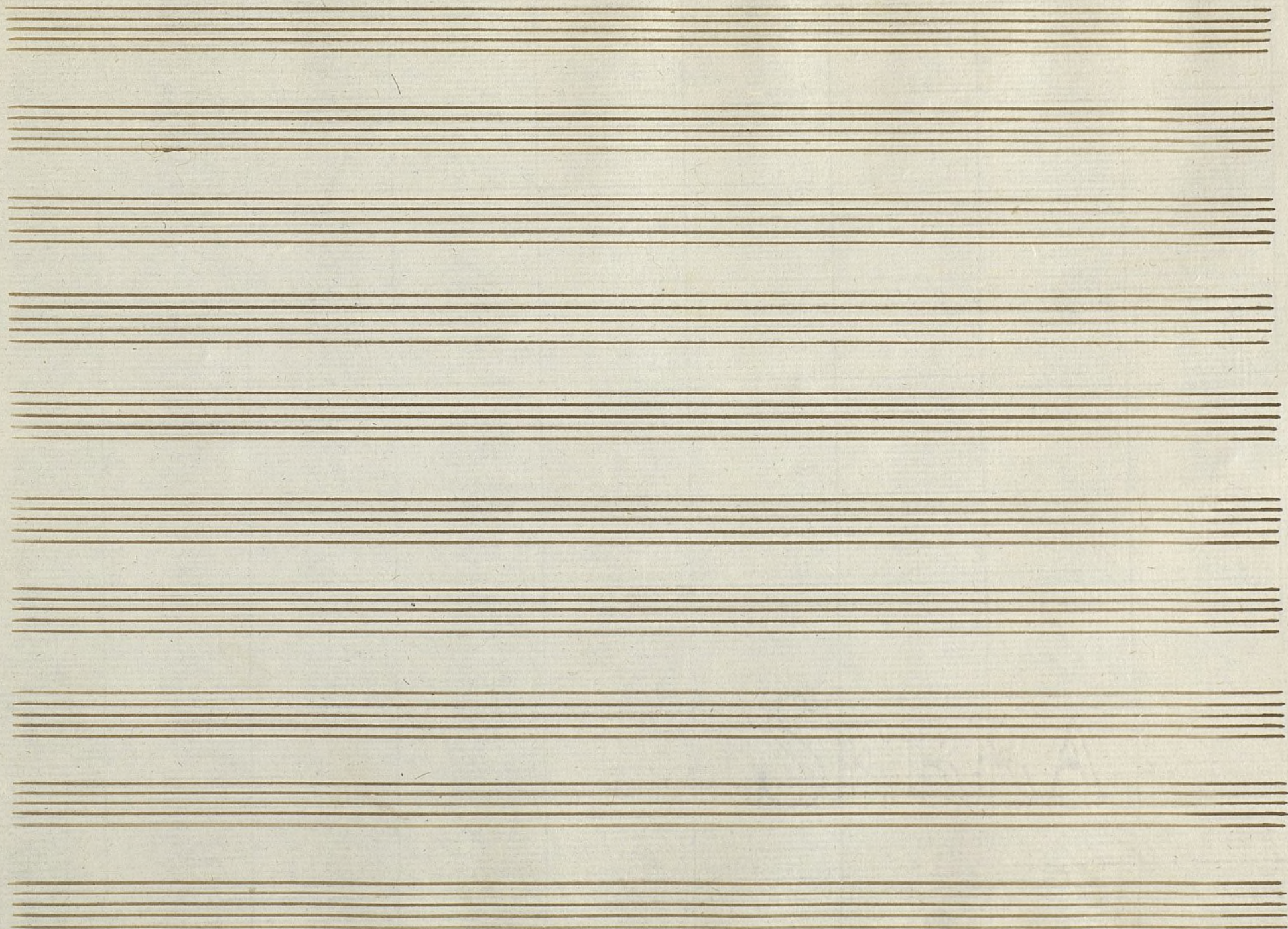
Yaes ven cer las Con fox max seen el sen tix las

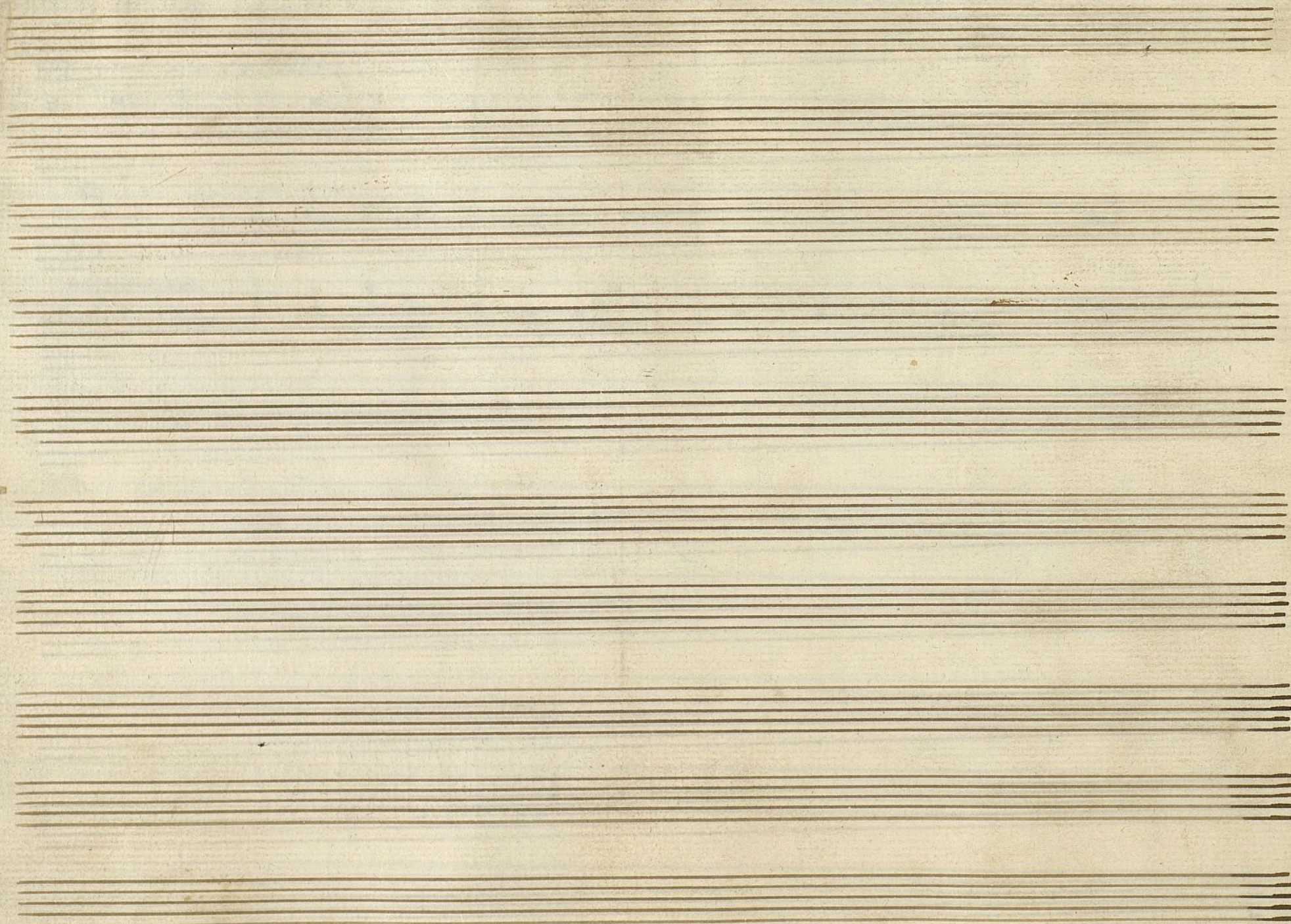
Handwritten musical score for two voices, second system. The top staff continues the soprano part and the bottom staff continues the alto part. The lyrics continue across the staves. The music includes some trills and longer note values.

Con fox max seen el sen tix - - - las Con fox max seen el sen

Con fox max seen el sen tix - - - las Con fox max seen el sen







Ayuntamiento de Madrid