

2

Mus 677

FIGLE

Mus 677

J.
J. Manó.

Sigle.

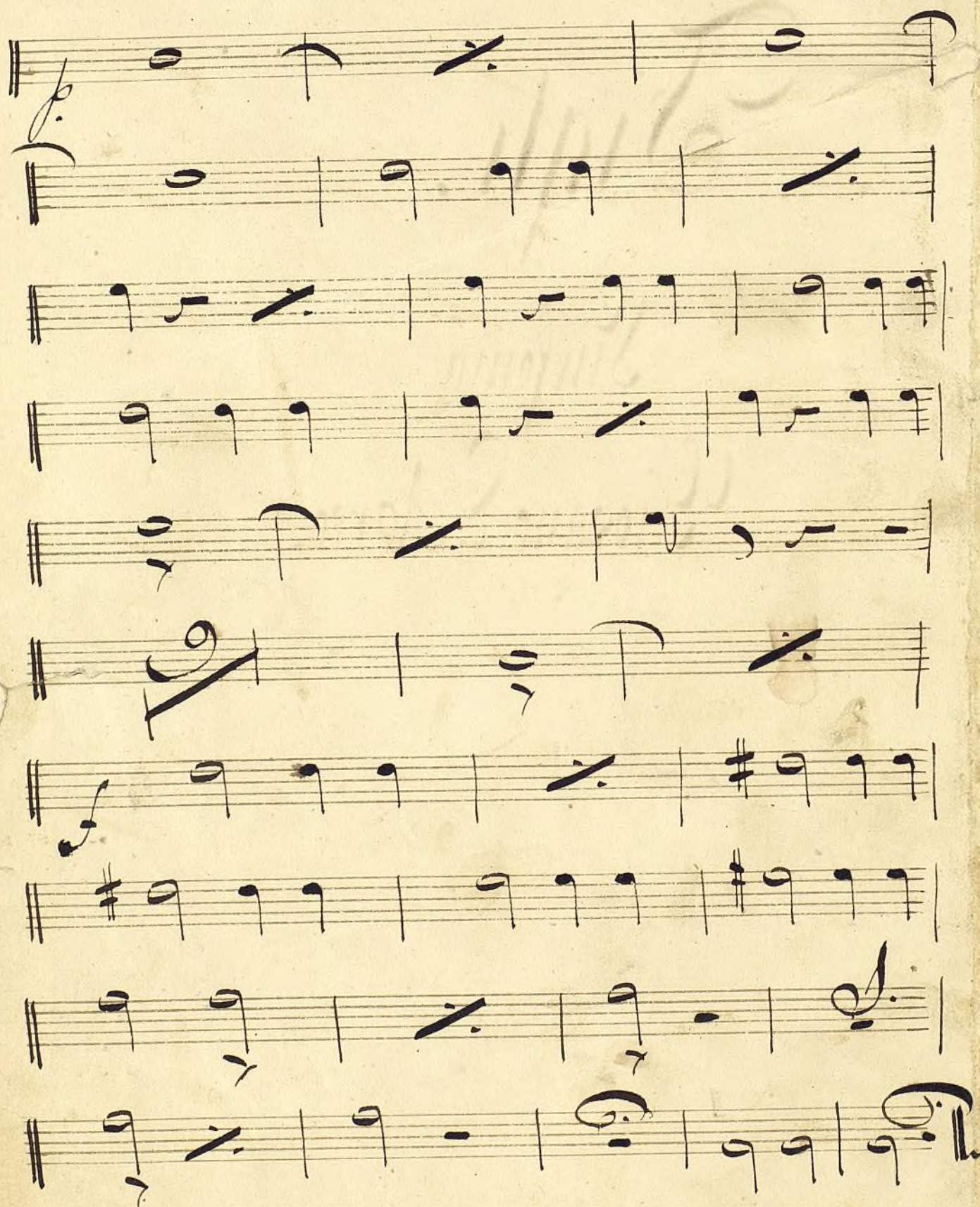
Sinfonia

Giovanni S. Torco.



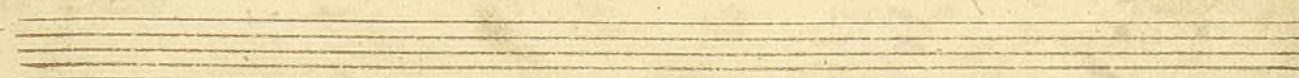
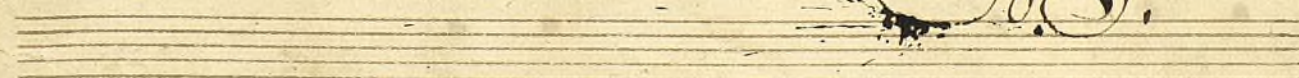
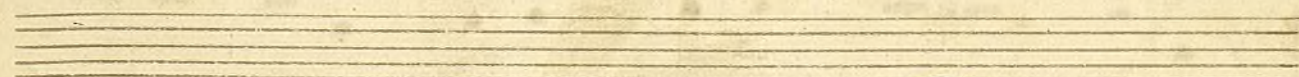
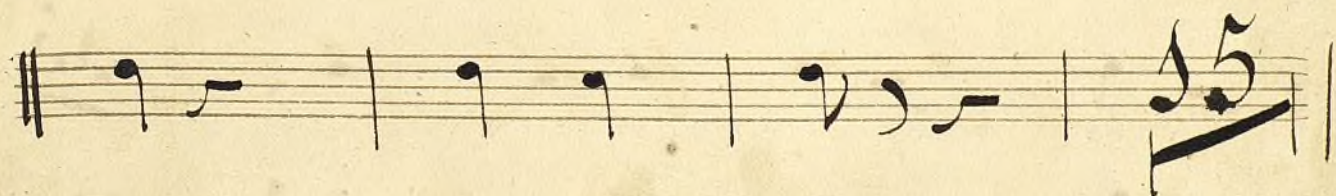
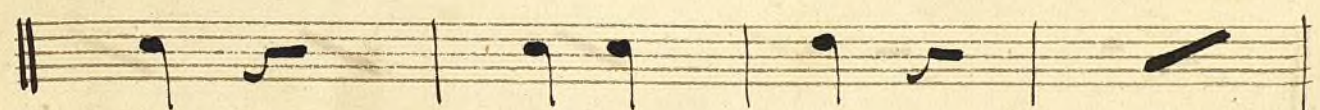
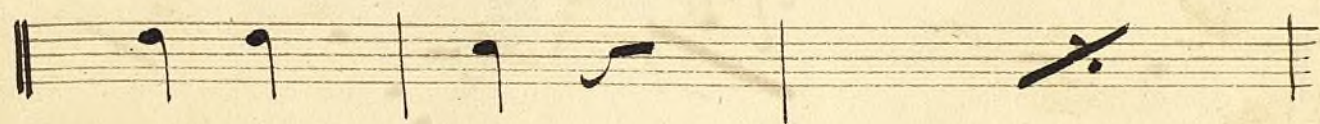
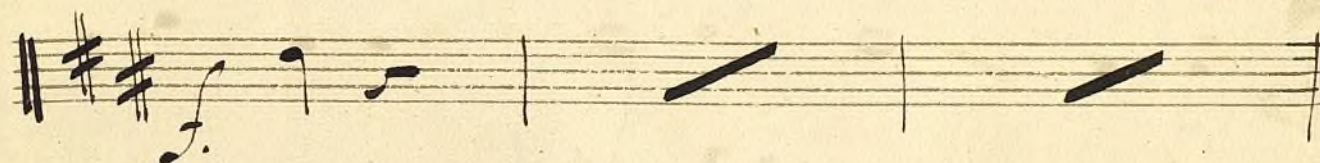
Sinfonia

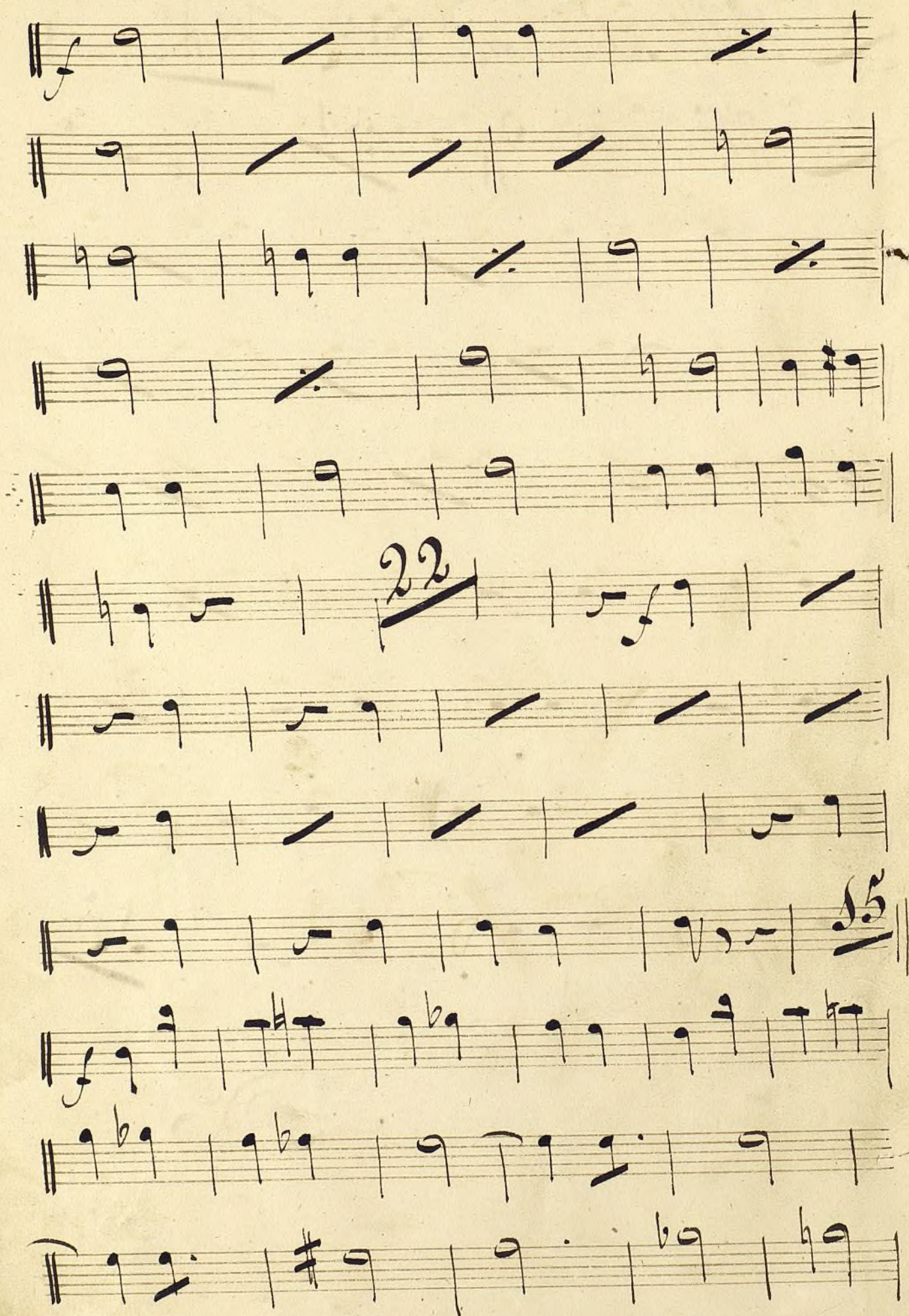
All.^o 20

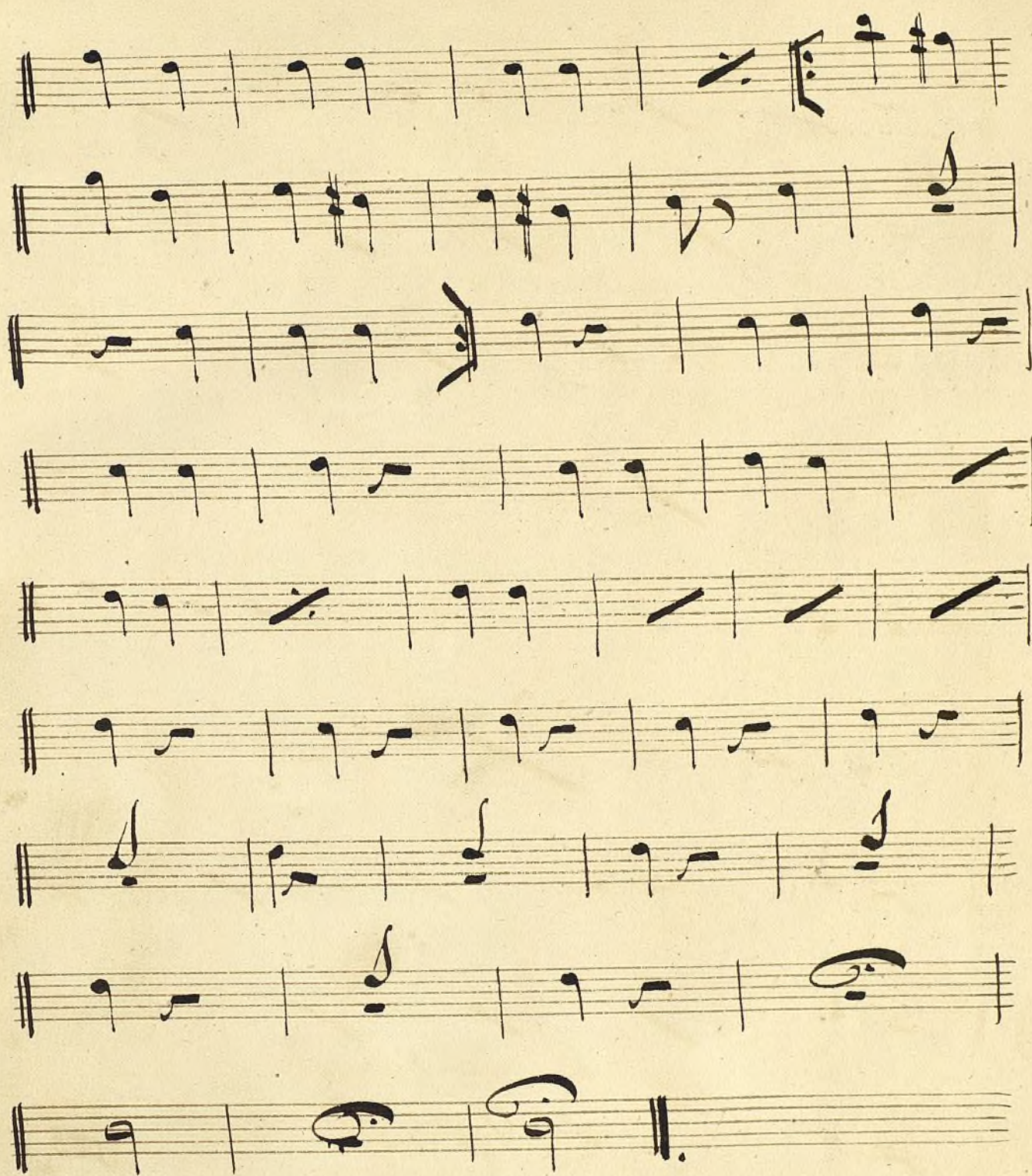


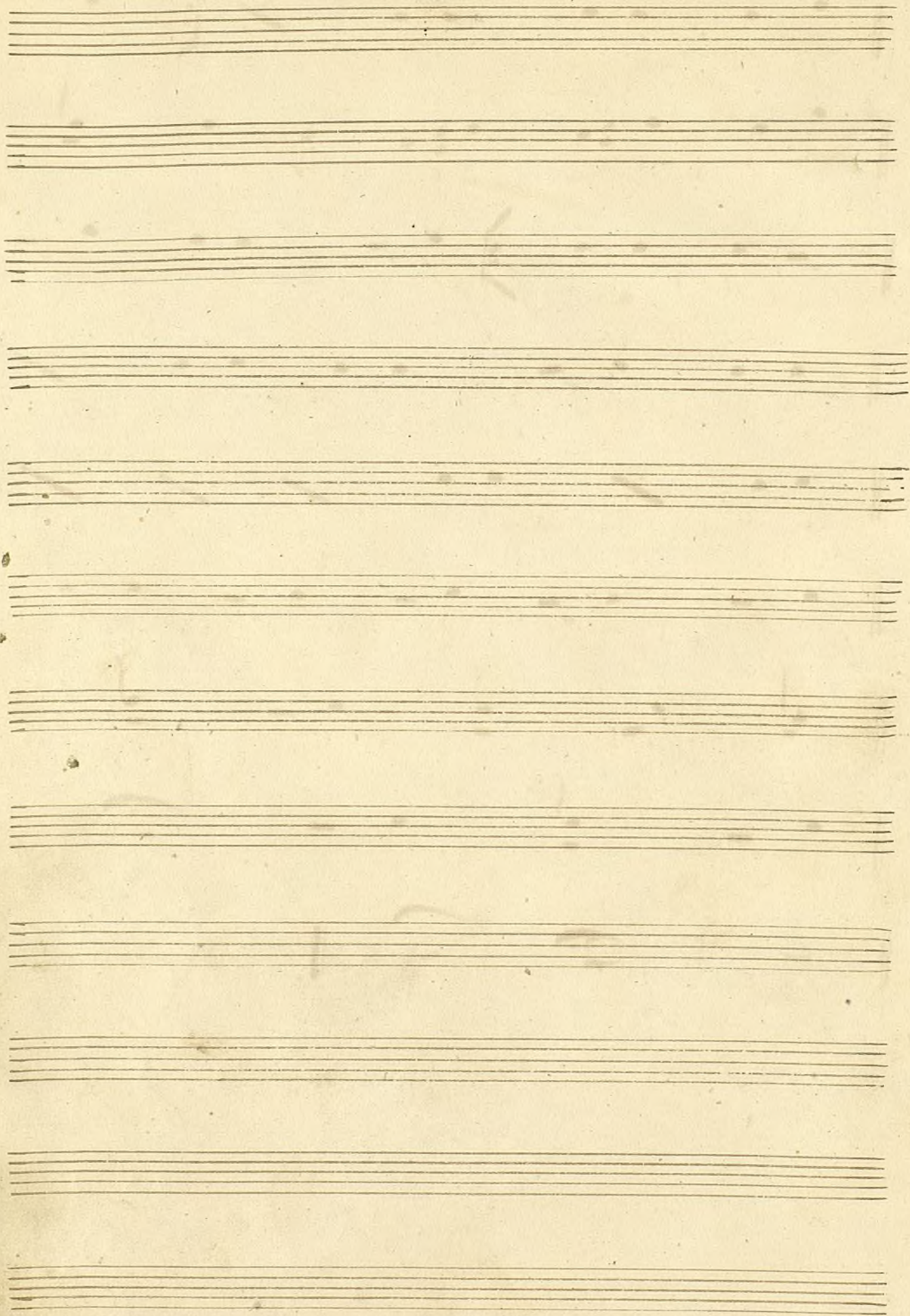
And.^{te} Pastorale 3/8 *trist.*

All.^o 3/4 3/4









Walses.

2

Li.

Figle
tanda de Walses

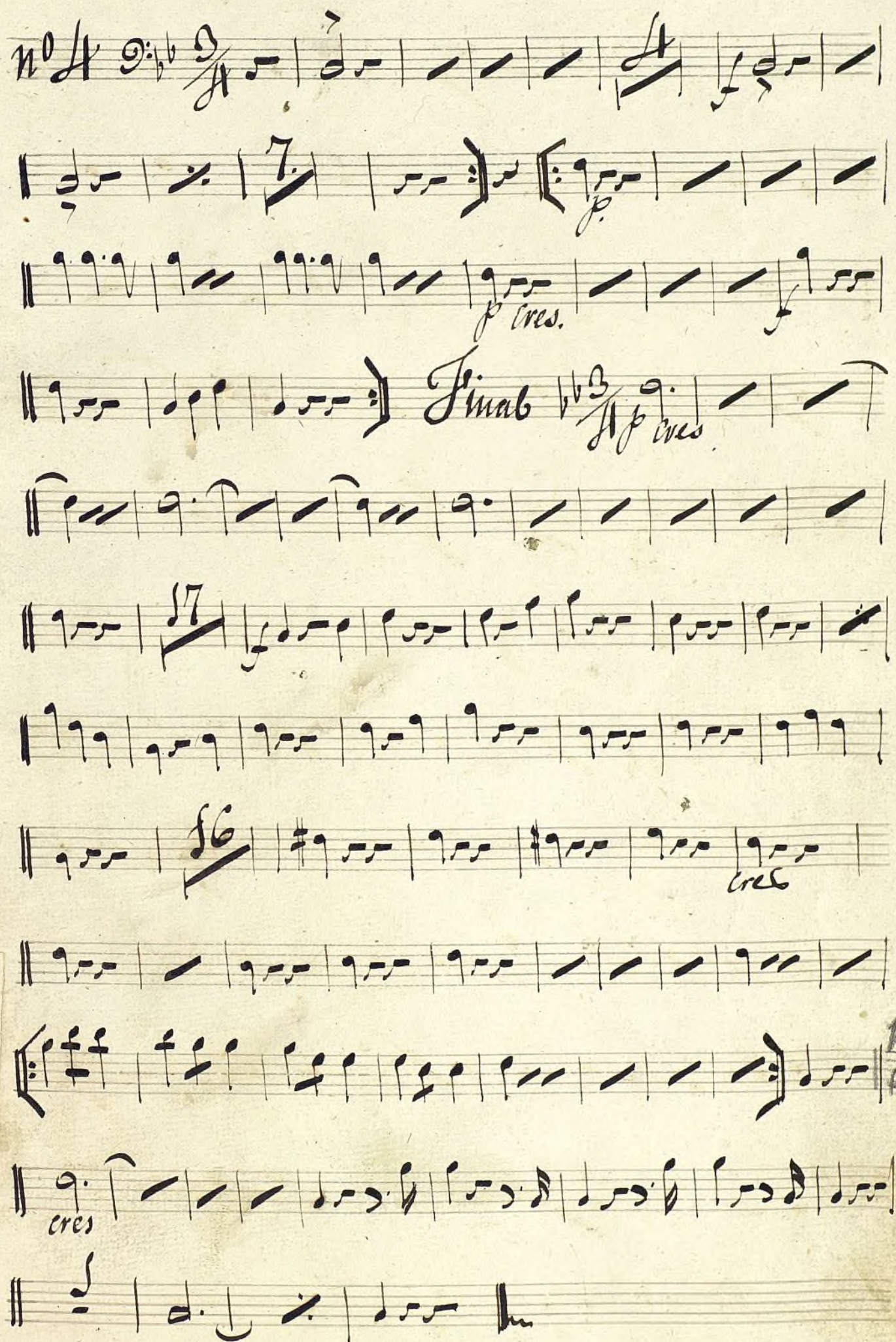
La Reyna Victoria

A

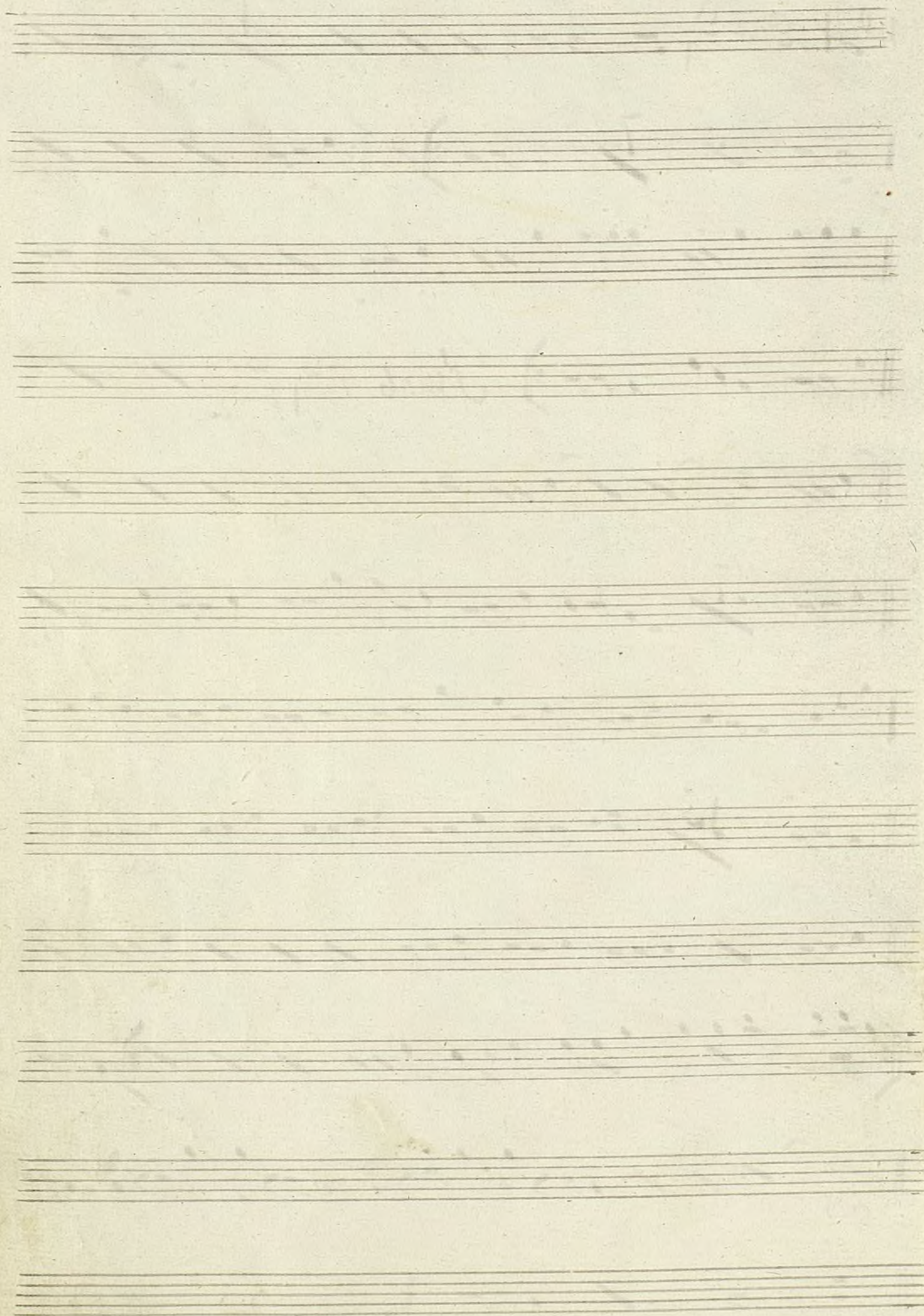
Introd Mod^{to} *Introd Pastoral*

Handwritten musical score for a piece titled "Introd Mod^{to} Introd Pastoral". The score is written on ten staves. The first staff begins with a treble clef, a key signature of one sharp (F#), and a time signature of 8/8. The notation includes various musical symbols such as notes, rests, and bar lines. The piece concludes with a double bar line and the word "ver" written below the staff.

Handwritten musical score on ten staves. The notation includes various musical symbols such as clefs, time signatures, notes, rests, and dynamic markings. The word "Finab" is written across the fourth staff. The number "13" appears at the end of the eighth staff.



Handwritten musical score on ten staves. The notation includes various musical symbols such as clefs, time signatures, notes, rests, and dynamic markings. The word "Finab" is written across the fourth staff. The number "13" appears at the end of the eighth staff.



3

6

Trille

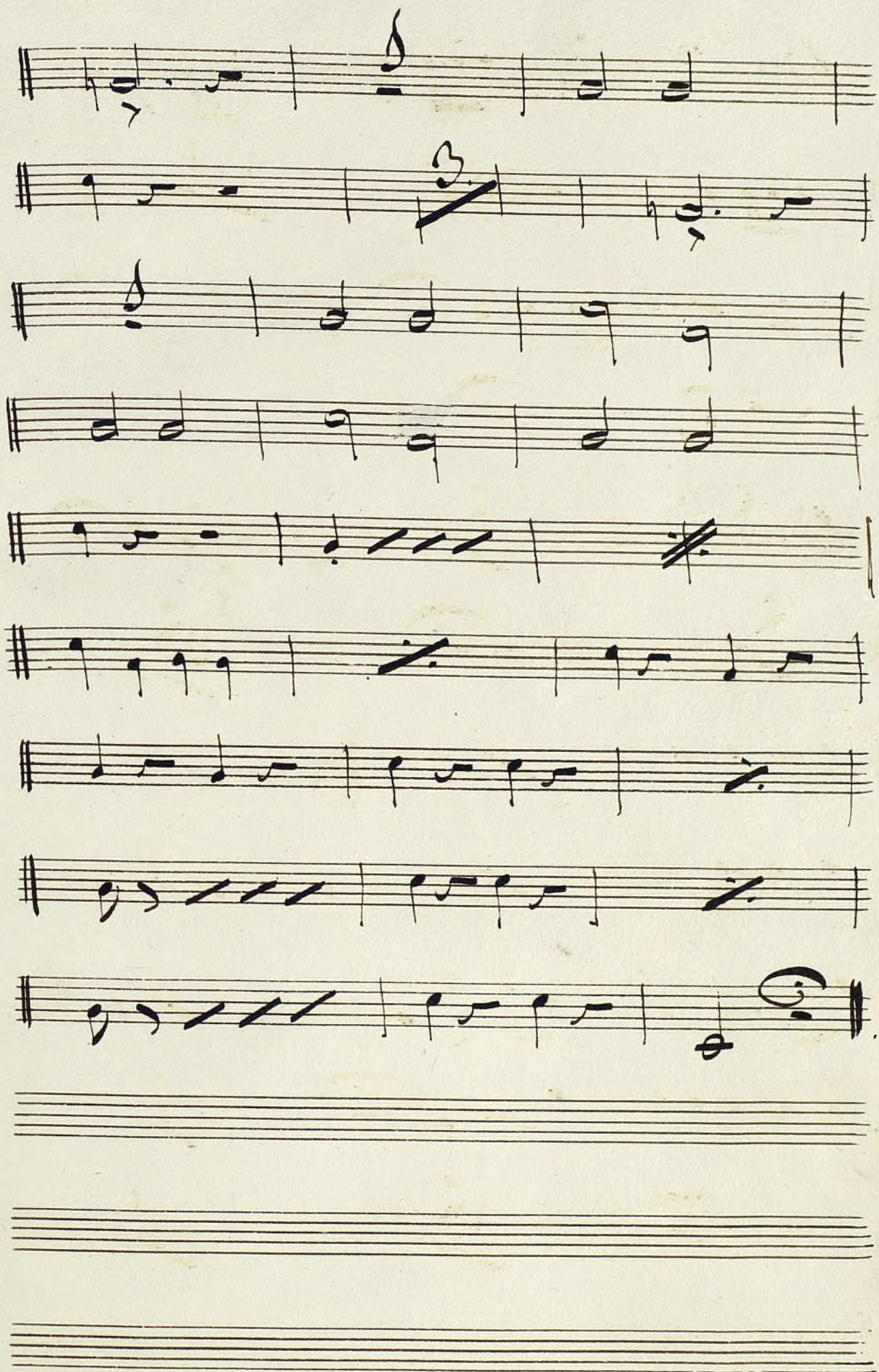
Cavatina.

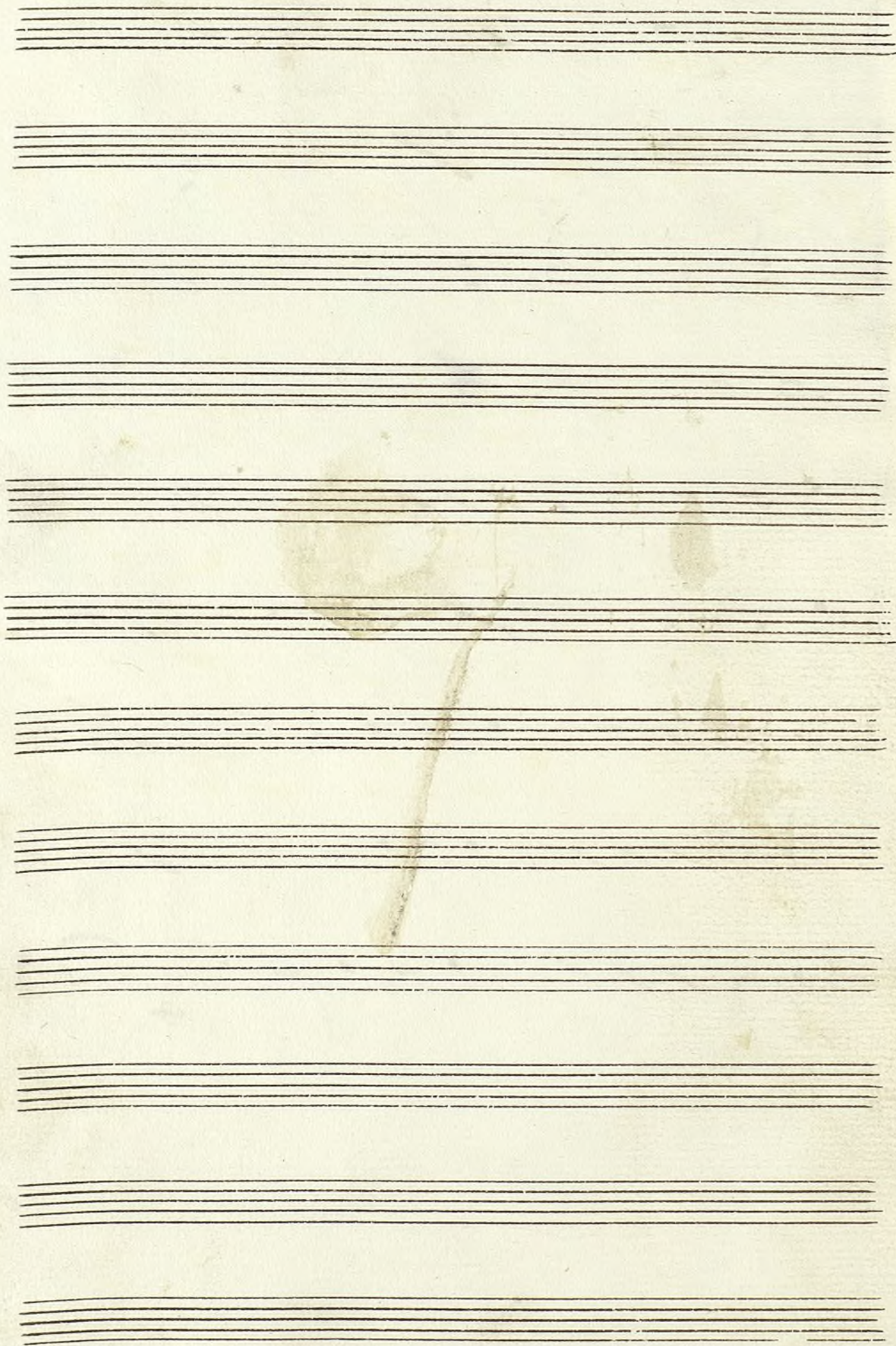
Obligada de Corno Inglés

And^{te}

all^{po} mod. to.

Poco Più^{so}

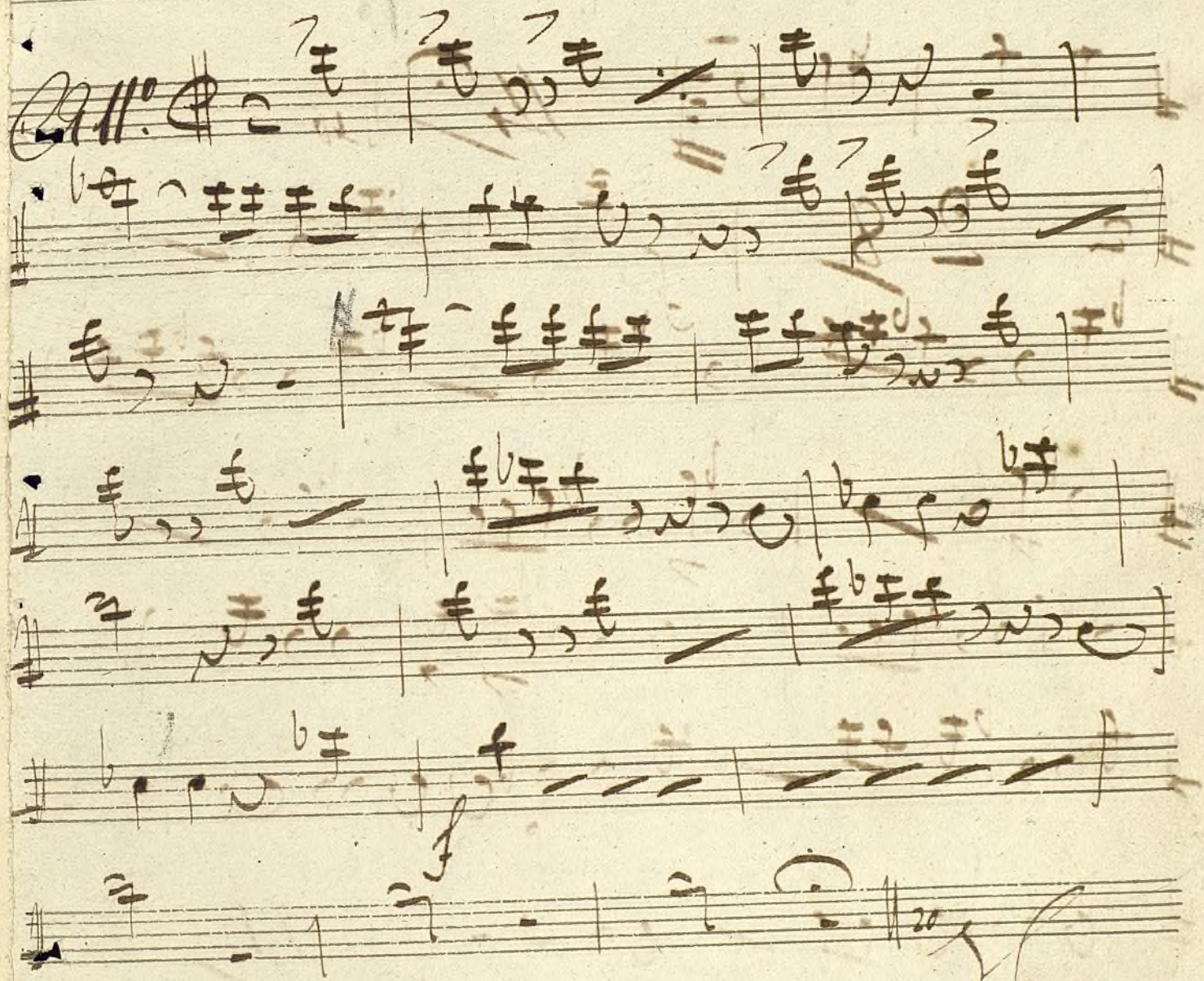


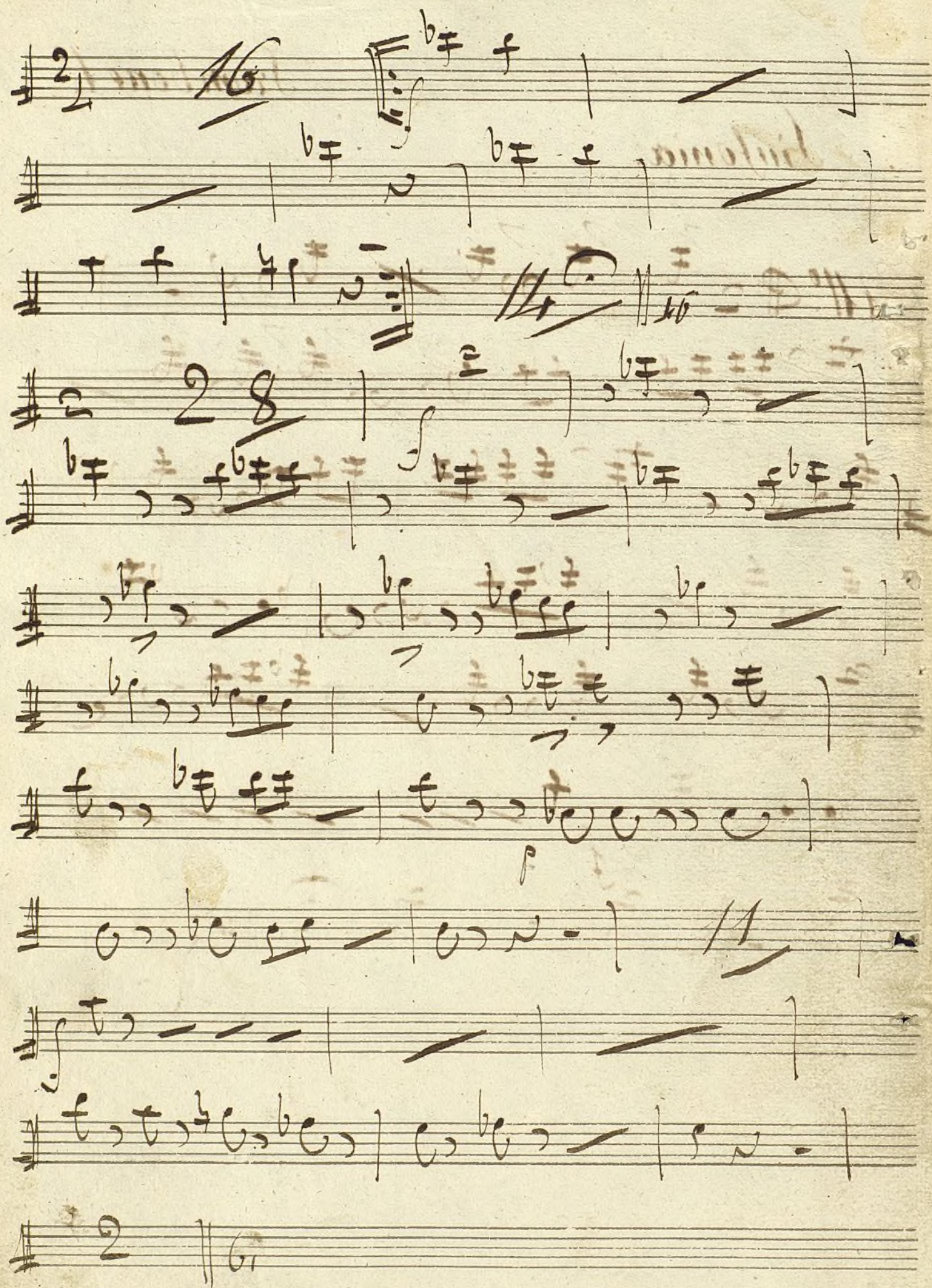


4

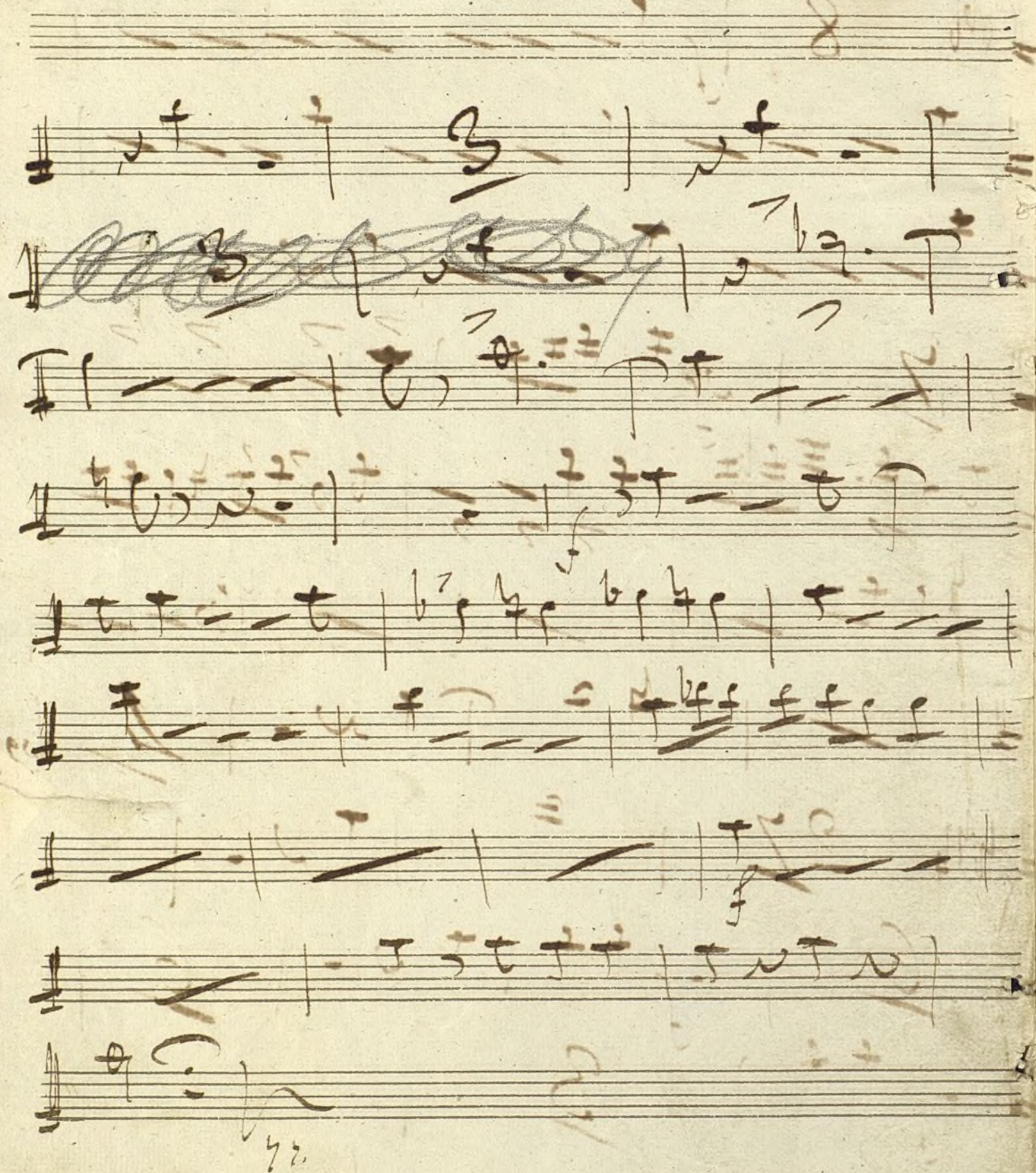
Trombone 1^o

Sinfonia





Handwritten musical score on ten staves. The notation includes various musical symbols such as clefs, time signatures, and notes. Large numbers (8, 7, 27, 6, 3) are written above some staves, possibly indicating measures or sections. The manuscript shows signs of age, including ink bleed-through from the reverse side and some staining.

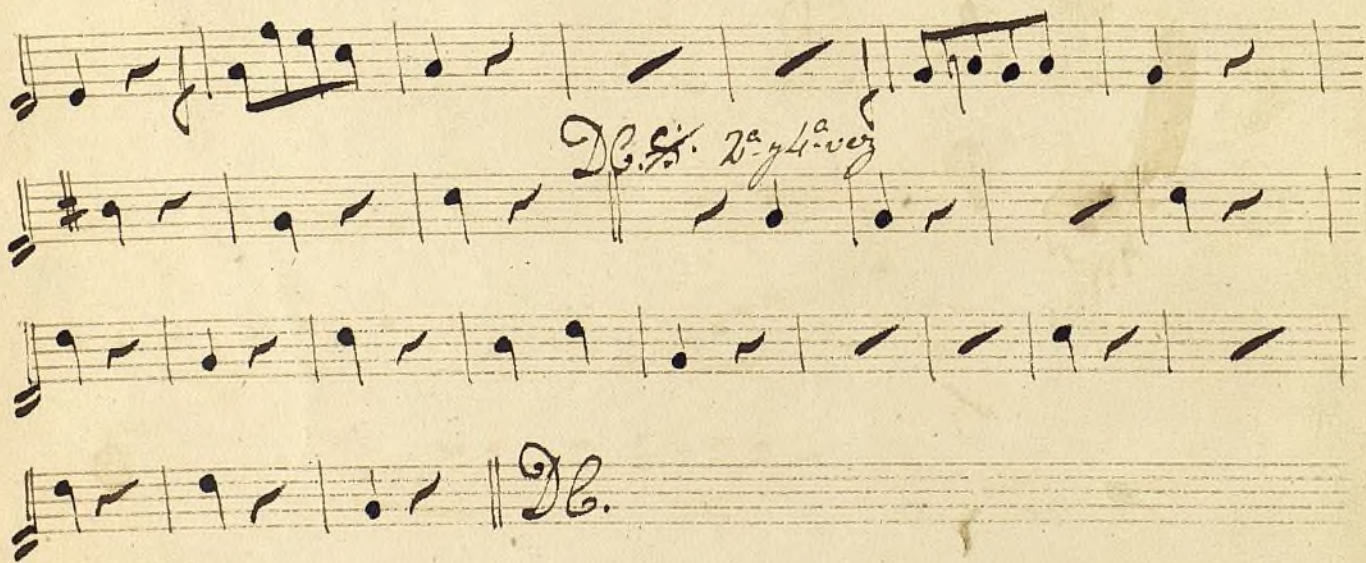
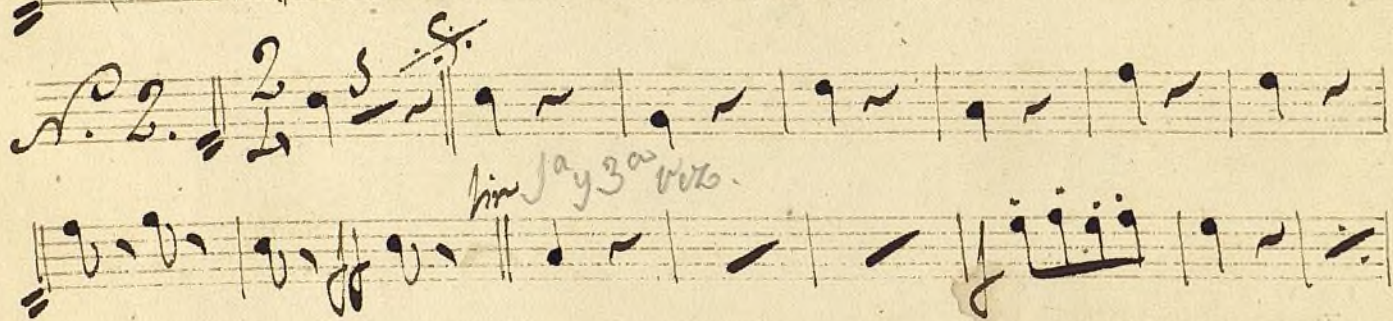


Figle.

El Soldado Español
Rigodons de Barbieri,

No. 1.

Triller.



Handwritten musical score on ten staves. The notation includes various musical symbols such as clefs, key signatures (sharps), time signatures (3/2, 6/8, 2/4), and notes. The score is divided into sections by double bar lines and includes dynamic markings like *for. contin.* and *for.*. The notation is in a cursive, handwritten style typical of 18th or 19th-century manuscripts.

6

12

Belisario Sinfonia Agile

Maestoso $\text{P} \flat \flat \text{C} - | \flat \flat \text{d} \text{d} \dots \text{f} | \text{d} \sim - |$ $|| \text{d} \sim - | \text{g} / | \sim \flat \text{d} \sim | \text{f} / |$ $|| \sim \flat \text{d} \sim | \flat - | \sim \flat \text{d} \text{d} \text{f} | \text{d} \sim - |$ $|| \text{g} / \text{all}^{\text{o}} \text{Vivace} || \flat \flat \text{C} \text{d} - / / | \text{f} / | \text{d} \sim - |$ $|| \text{33} / | \sim \text{d} - | \text{3} / | \sim \text{f} \text{d} - |$ $|| - | \text{g} - / / | \text{f} / | \text{o} | \text{o} | \text{g} \text{g} \sim |$ $|| \sim \text{g} \text{g} \text{g} | \text{do} | \text{o} | \text{g} \text{g} \sim | \sim \flat \text{d} - /$ $|| \flat \text{g} \text{g} \text{g} | \text{g} \text{g} \text{g} | \text{d} \sim \text{g} \sim | \flat \text{g} \text{d} | \text{g} \sim - |$ $|| \text{o} | \text{g} \sim - | \text{o} | \text{V. I.}$

|| 9 8 | / | / | / | 9 8 7 6 | 9 8 7 6 |

|| 9 ~ - | 8 7 6 5 4 3 2 1 | / | / | / | / |

|| 9 8 7 6 5 4 3 2 1 | / | / | / | 9 8 7 6 5 4 3 2 1 |

|| 8 7 6 5 4 3 2 1 | 9 8 7 6 5 4 3 2 1 | 9 8 7 6 5 4 3 2 1 | 9 8 7 6 5 4 3 2 1 |

|| 9 8 7 6 5 4 3 2 1 | 9 8 7 6 5 4 3 2 1 | 9 8 7 6 5 4 3 2 1 | 9 8 7 6 5 4 3 2 1 |

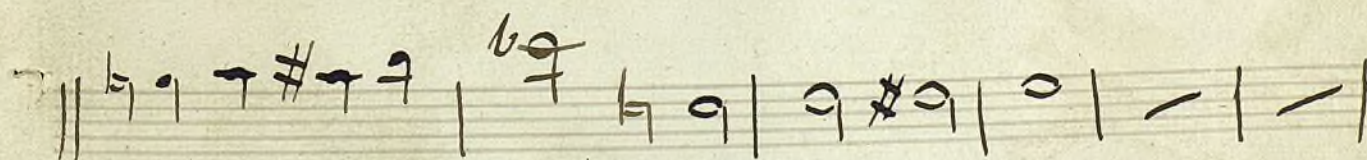
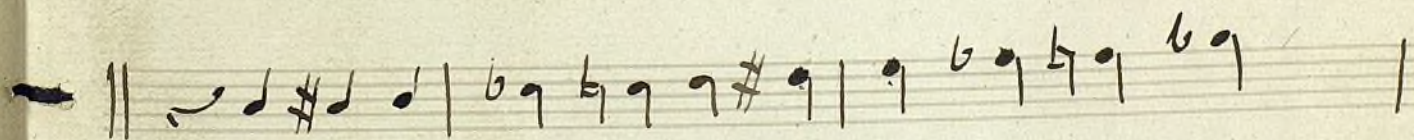
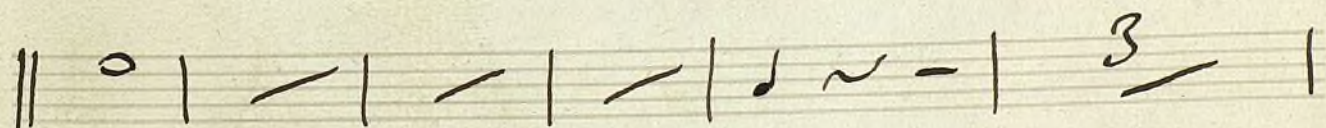
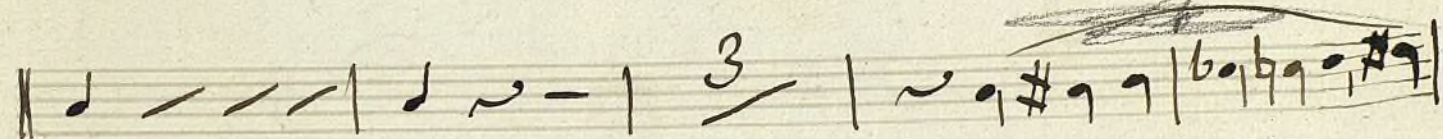
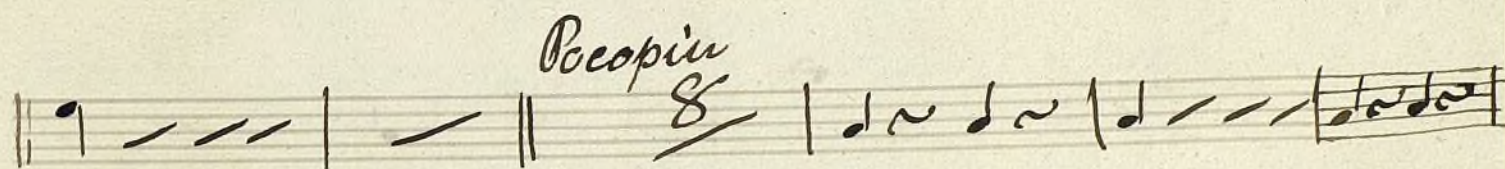
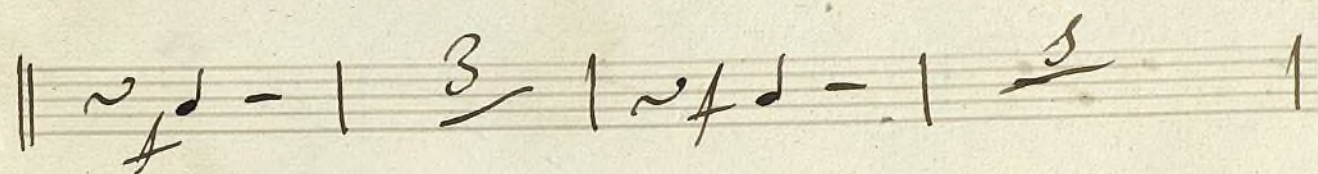
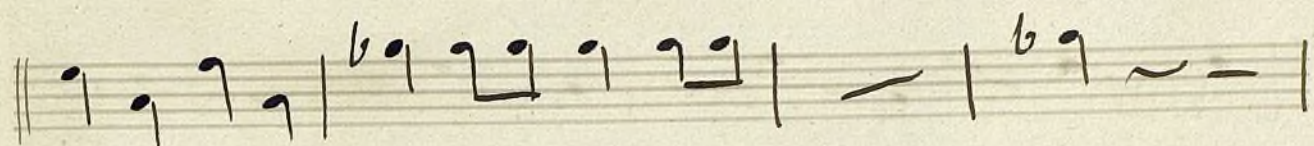
|| ~~9 8 7 6 5 4 3 2 1~~ | 9 ~ - | 3 3 | 9 8 7 6 5 4 3 2 1 |

|| 9 8 7 6 5 4 3 2 1 | 9 8 7 6 5 4 3 2 1 | 9 8 7 6 5 4 3 2 1 | 9 8 7 6 5 4 3 2 1 |

|| 7 6 5 4 3 2 1 | / | / | / | / |

|| 9 8 7 6 5 4 3 2 1 | / | / | / | 9 8 7 6 5 4 3 2 1 |

|| 9 8 7 6 5 4 3 2 1 | 9 8 7 6 5 4 3 2 1 | 9 8 7 6 5 4 3 2 1 | 9 8 7 6 5 4 3 2 1 |



|| 9 ~ 9 ~ | 9 ~ 9 ~ | 9 ~ 9 ~ | 9 ~ 9 ~ |

|| 9 ~ 9 ~ | 9 ~ 9 ~ | / | / | / |

|| 9 9 9 9 | / | / | / | 9 9 |

|| 9 9 | 9 9 | 9 9 | 9 ~ - - |

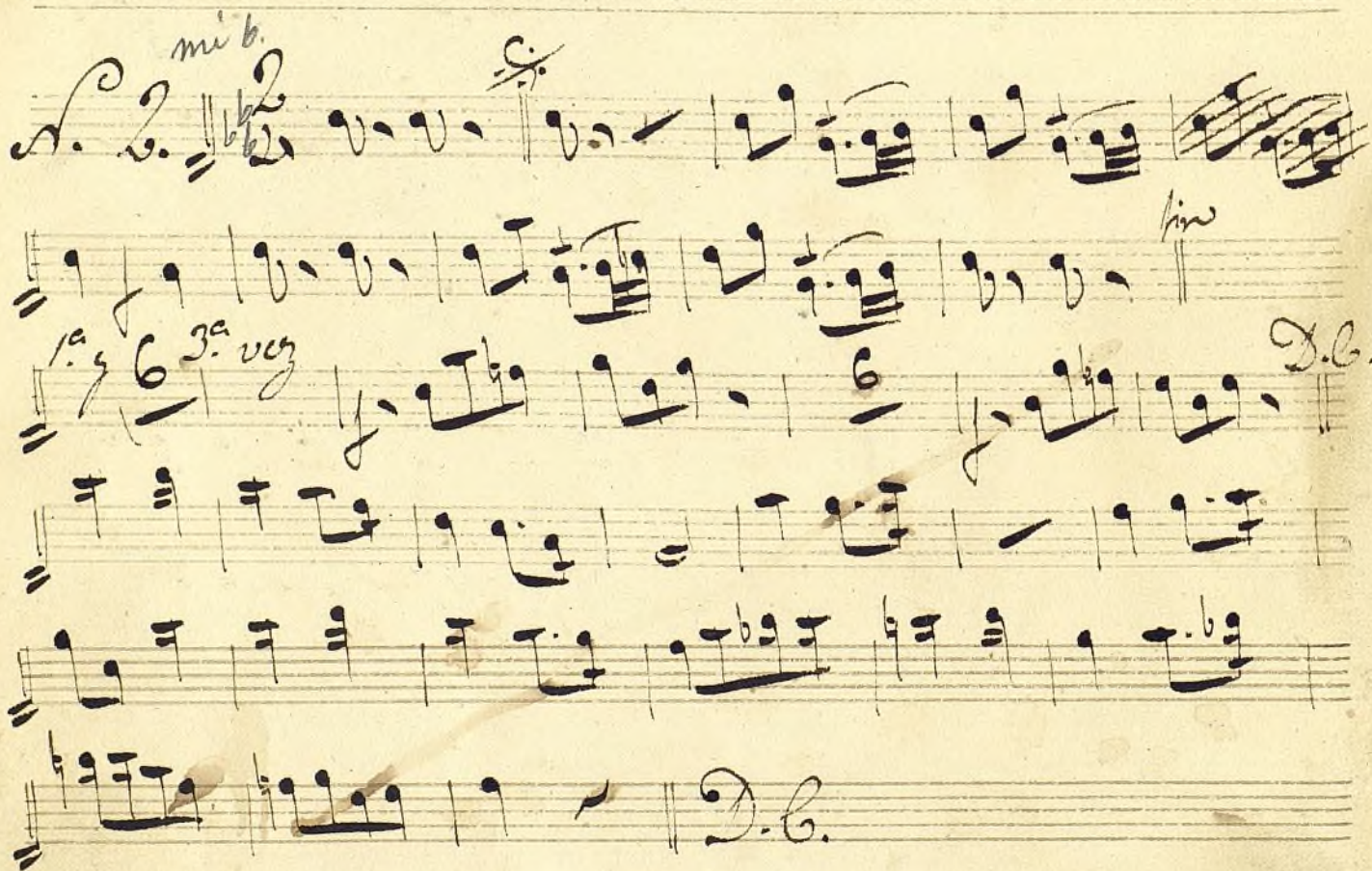
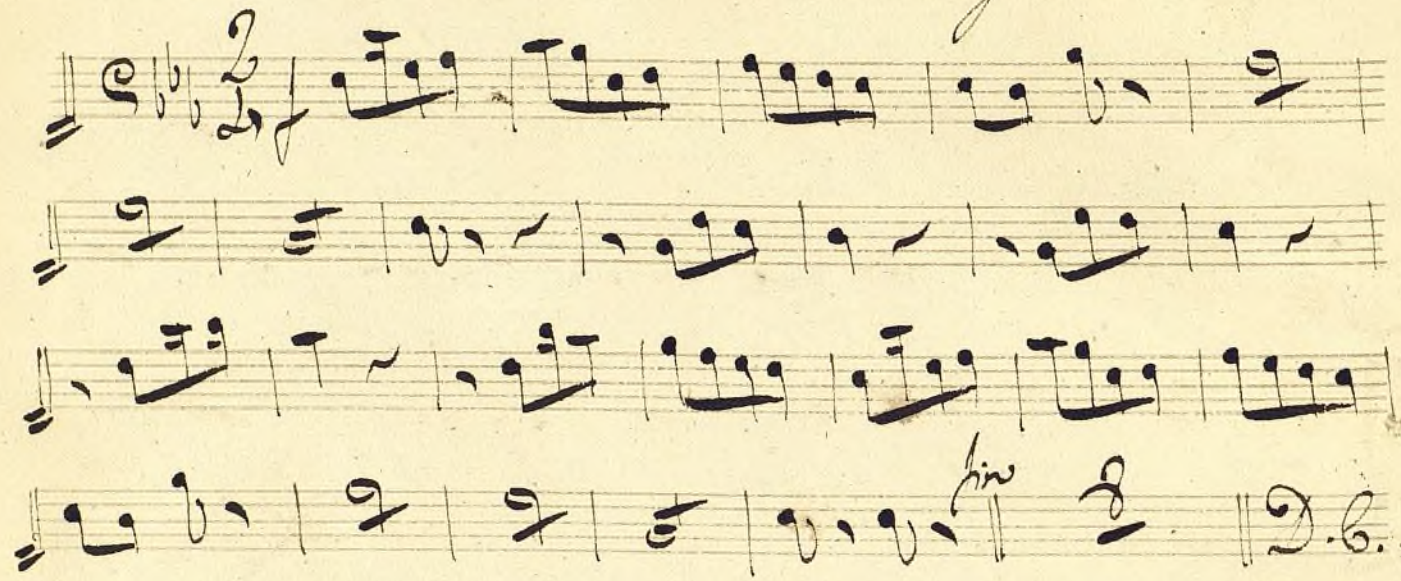
|| - | 9 - | - | 9 || ~

Figles,

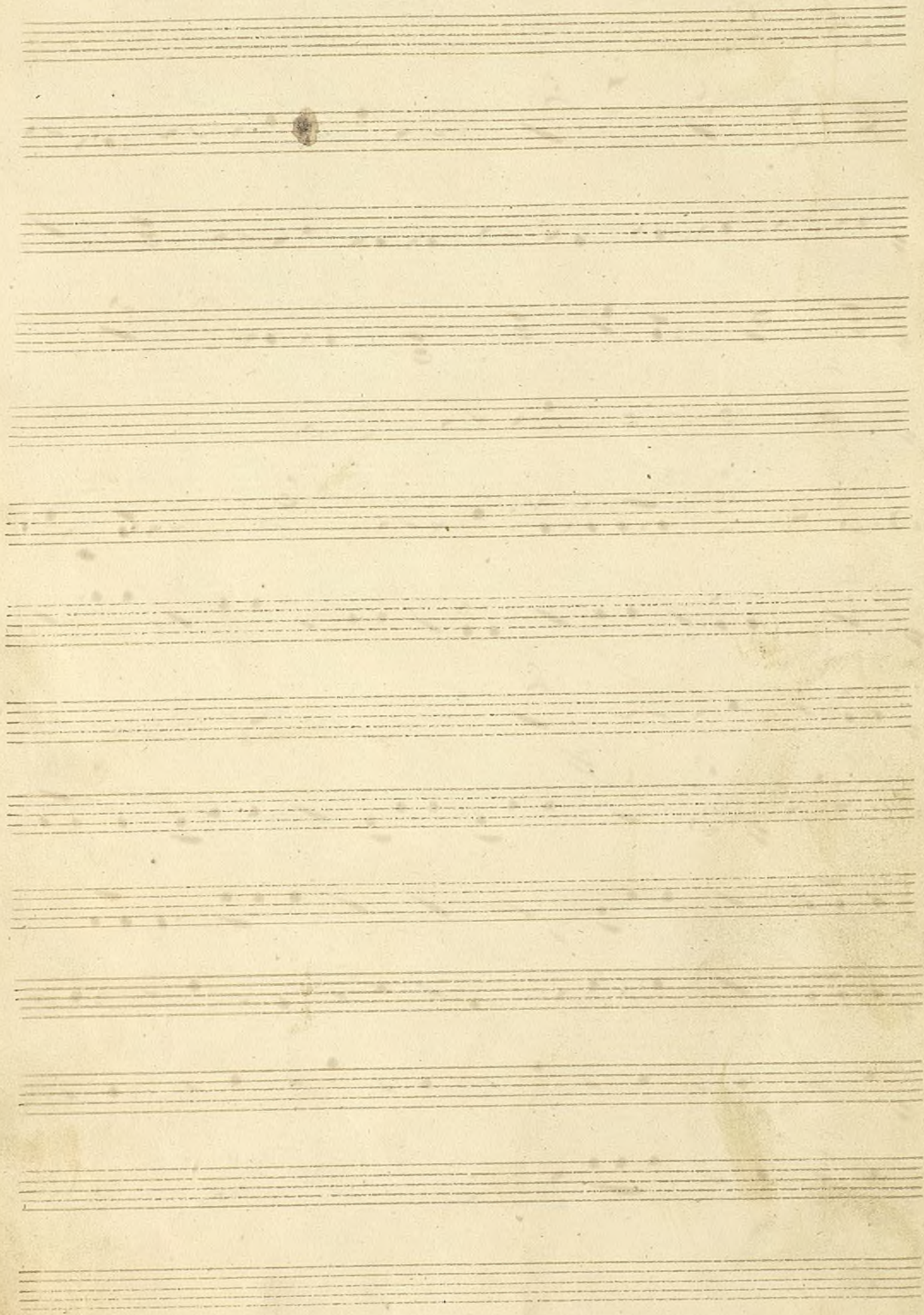
La Roche Buena
Rigodones de Barbieri

Al. 5^o

Figle.



Handwritten musical score on ten staves. The notation includes various musical symbols such as clefs, time signatures (e.g., 6/8, 3/4), notes, rests, and dynamic markings like *fin* and *D.C.* (Da Capo). The score is written in a cursive, handwritten style typical of 18th or 19th-century manuscripts. The first staff begins with a treble clef and a 3/4 time signature. The second staff starts with a 6/8 time signature. The third staff has a treble clef and a 3/4 time signature. The fourth staff has a treble clef and a 3/4 time signature. The fifth staff has a treble clef and a 3/4 time signature. The sixth staff has a treble clef and a 3/4 time signature. The seventh staff has a treble clef and a 3/4 time signature. The eighth staff has a treble clef and a 3/4 time signature. The ninth staff has a treble clef and a 3/4 time signature. The tenth staff has a treble clef and a 3/4 time signature.



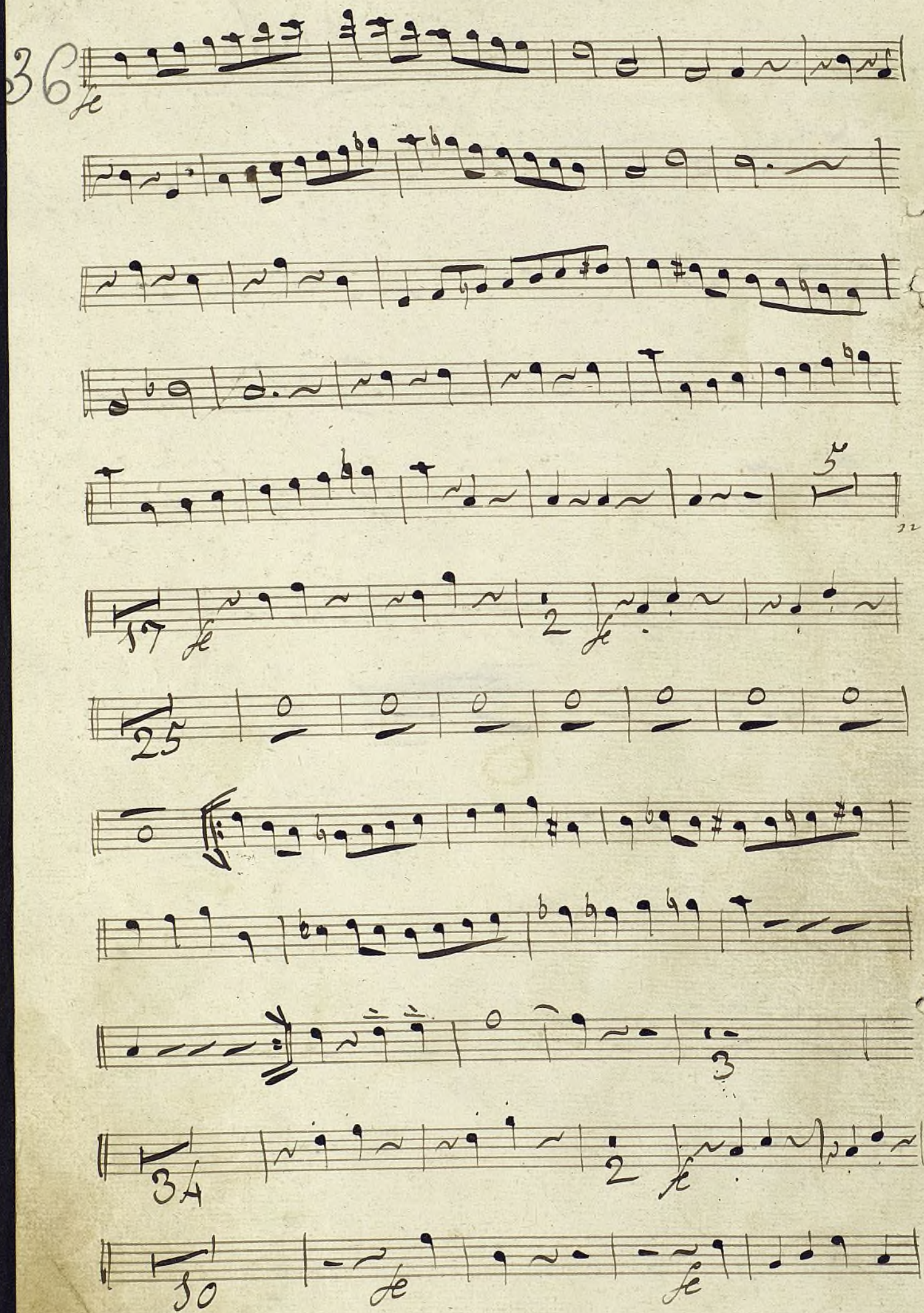
Ton. Gbasso **8** *Figle.*

16

All.^o deciso

Handwritten musical score for a piece titled "Ton. Gbasso 8 Figle." The score is written on ten staves. It begins with a treble clef, a key signature of one flat (B-flat), and a 2/2 time signature. The tempo/mood is marked "All.^o deciso". The score includes various musical notations such as notes, rests, and dynamic markings like "fe" (forte) and "p" (piano). There are also some numerical markings like "5", "2", "3", "24", "8", "7", "6", "8", "5", "30", "2", "30". A section is marked "And.^{no}" (Andante) with a 9/8 time signature. The piece concludes with a double bar line and a final "30." marking. The page number "16" is written in the top right corner.

Handwritten musical score on ten staves. The notation includes various musical symbols such as notes, rests, and clefs. The score is numbered 36 at the beginning of the first staff and 30 at the beginning of the last staff. The manuscript shows signs of age, including some staining and a small tear on the right edge.

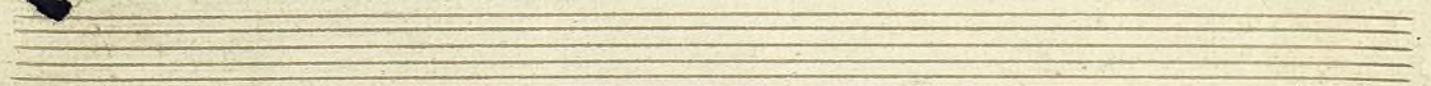
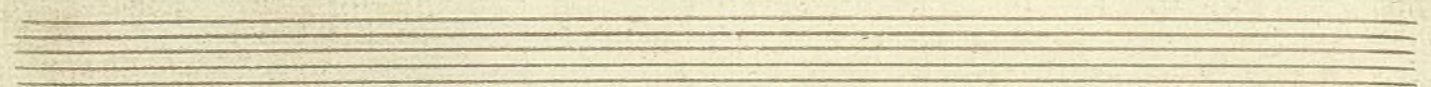
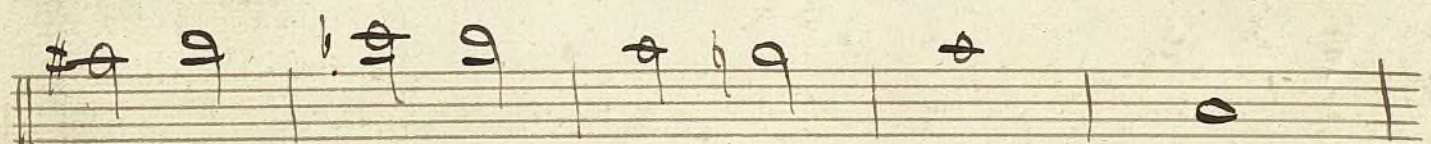
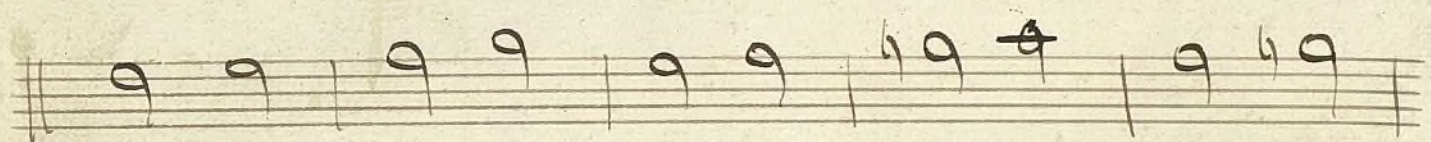
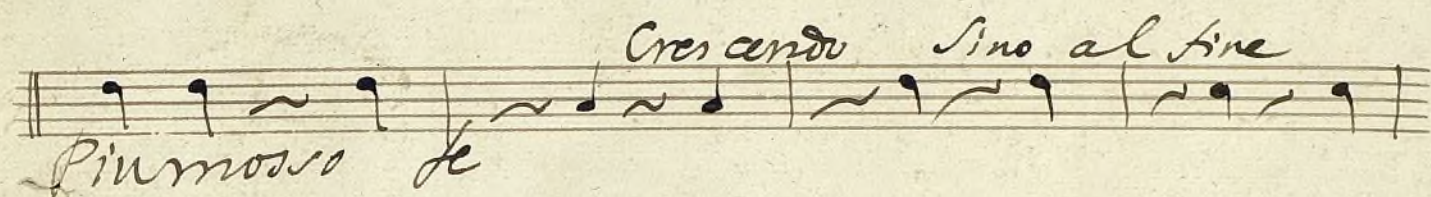


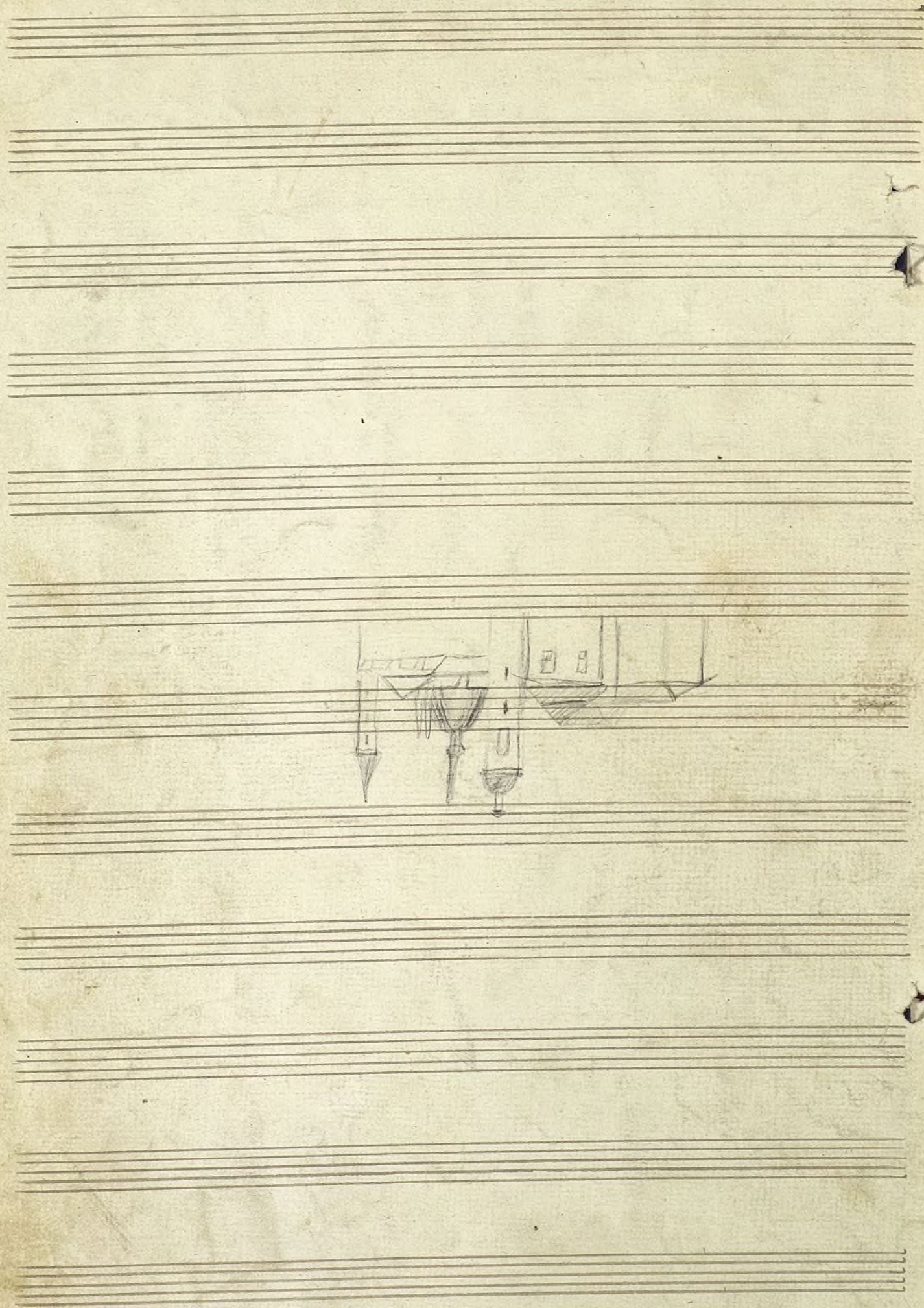
36

25

34

30





La folie Polka

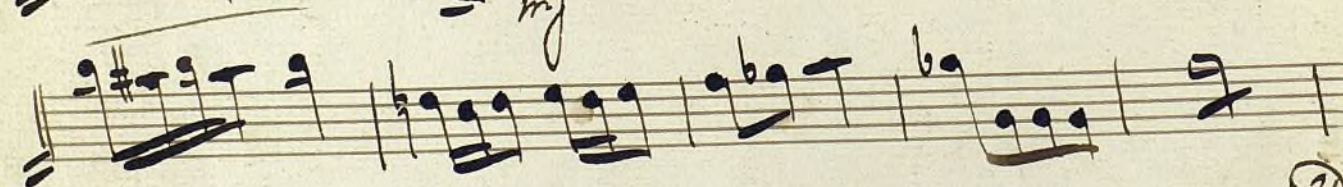
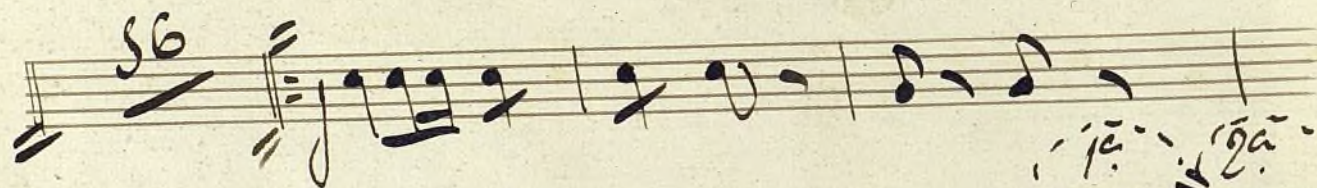
Uglande.

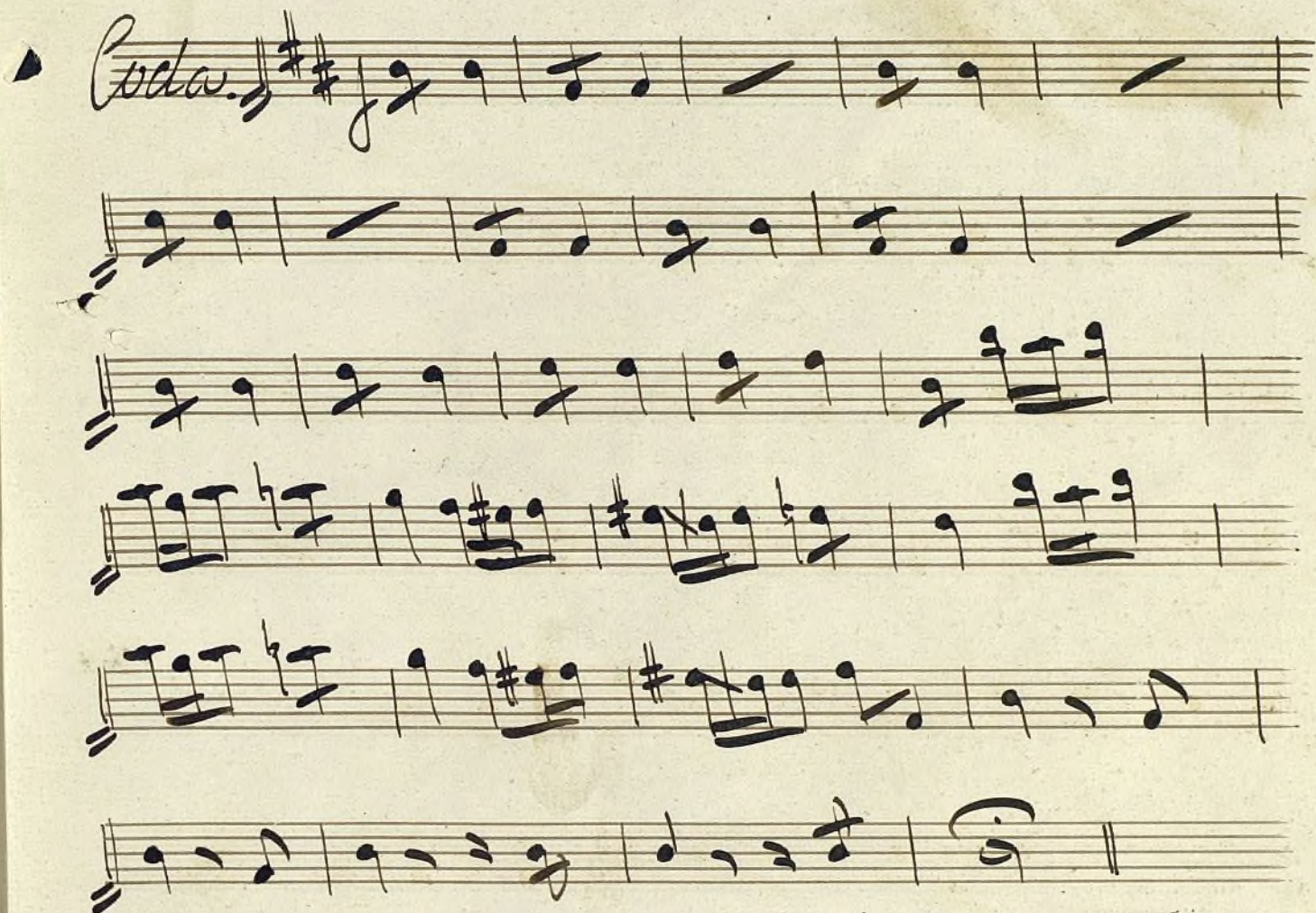
Vigilante

~~Tempo moderato~~

La folie.

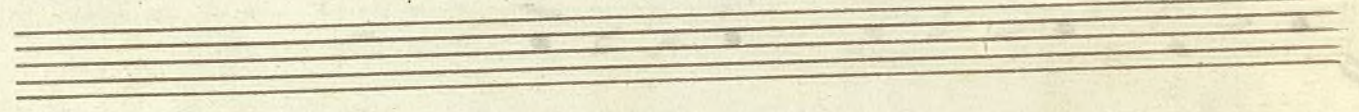
Polka per M. M. M.

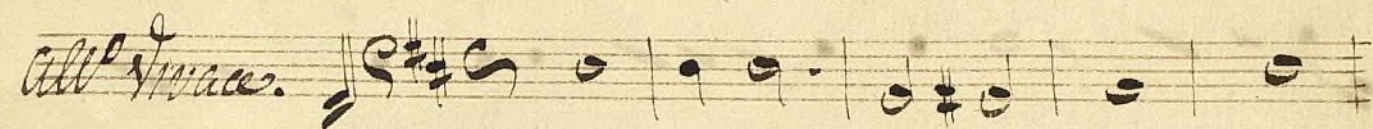
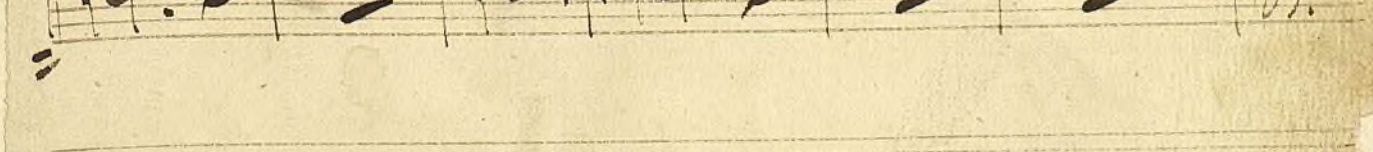


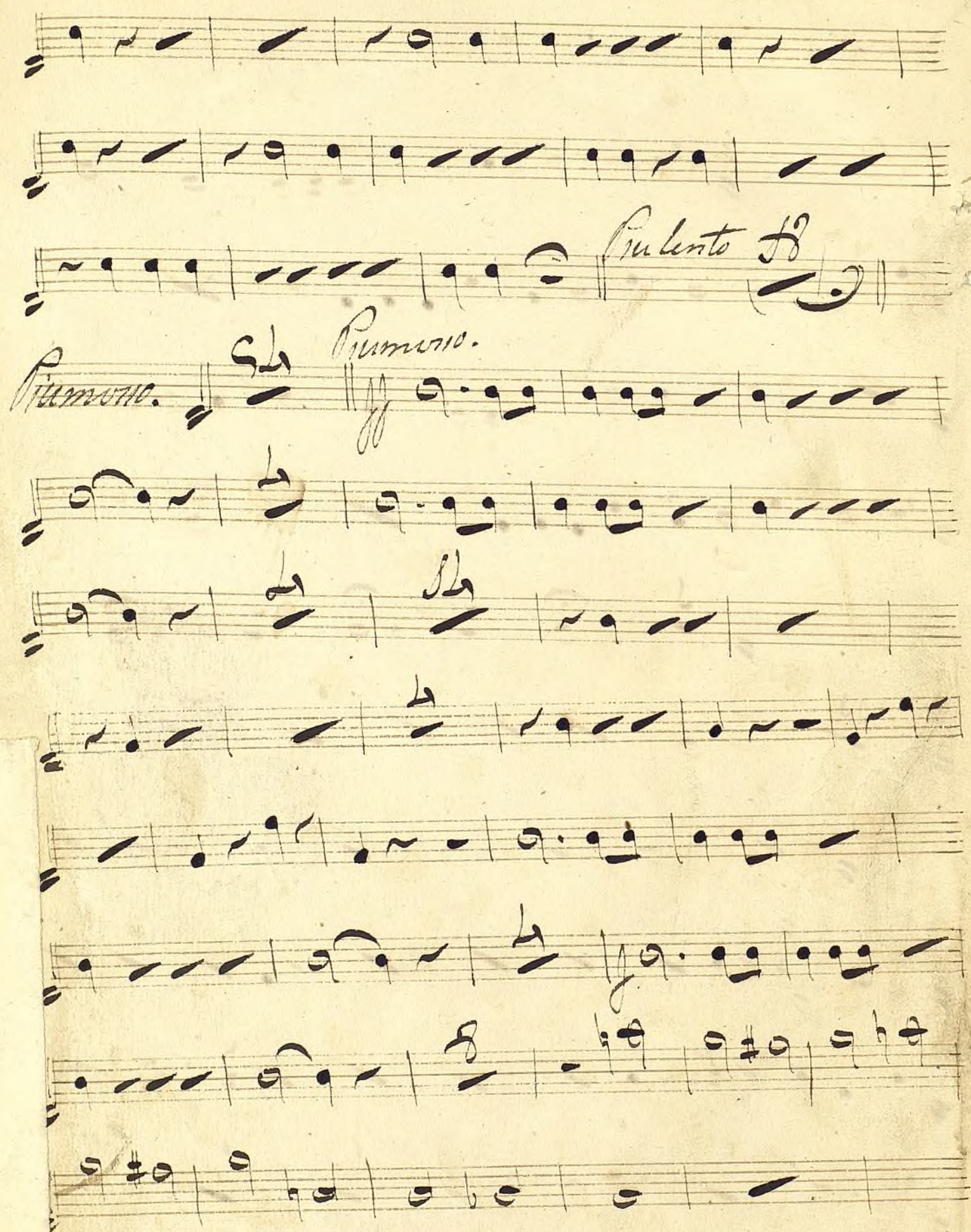


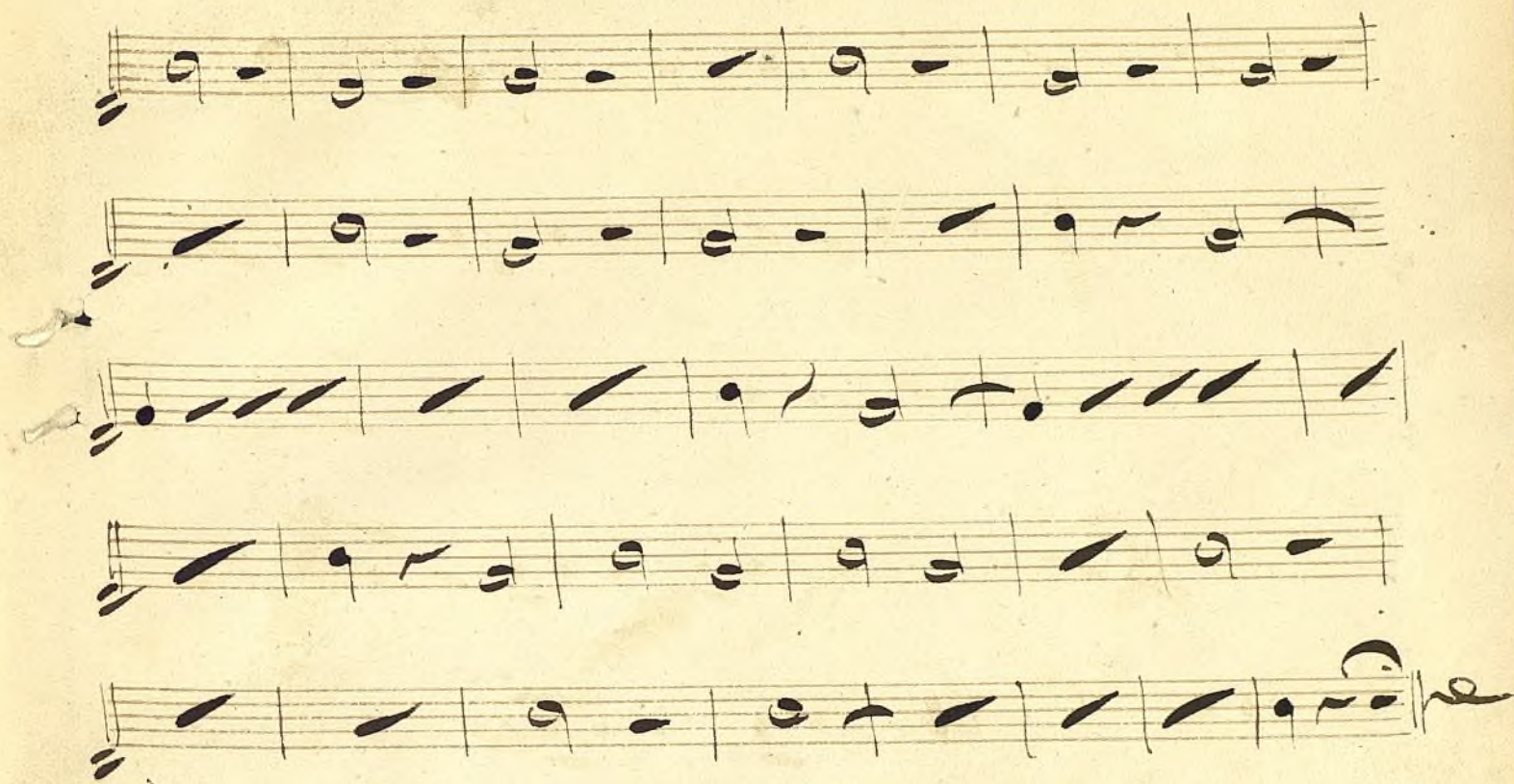
25
25
190

25
25
195

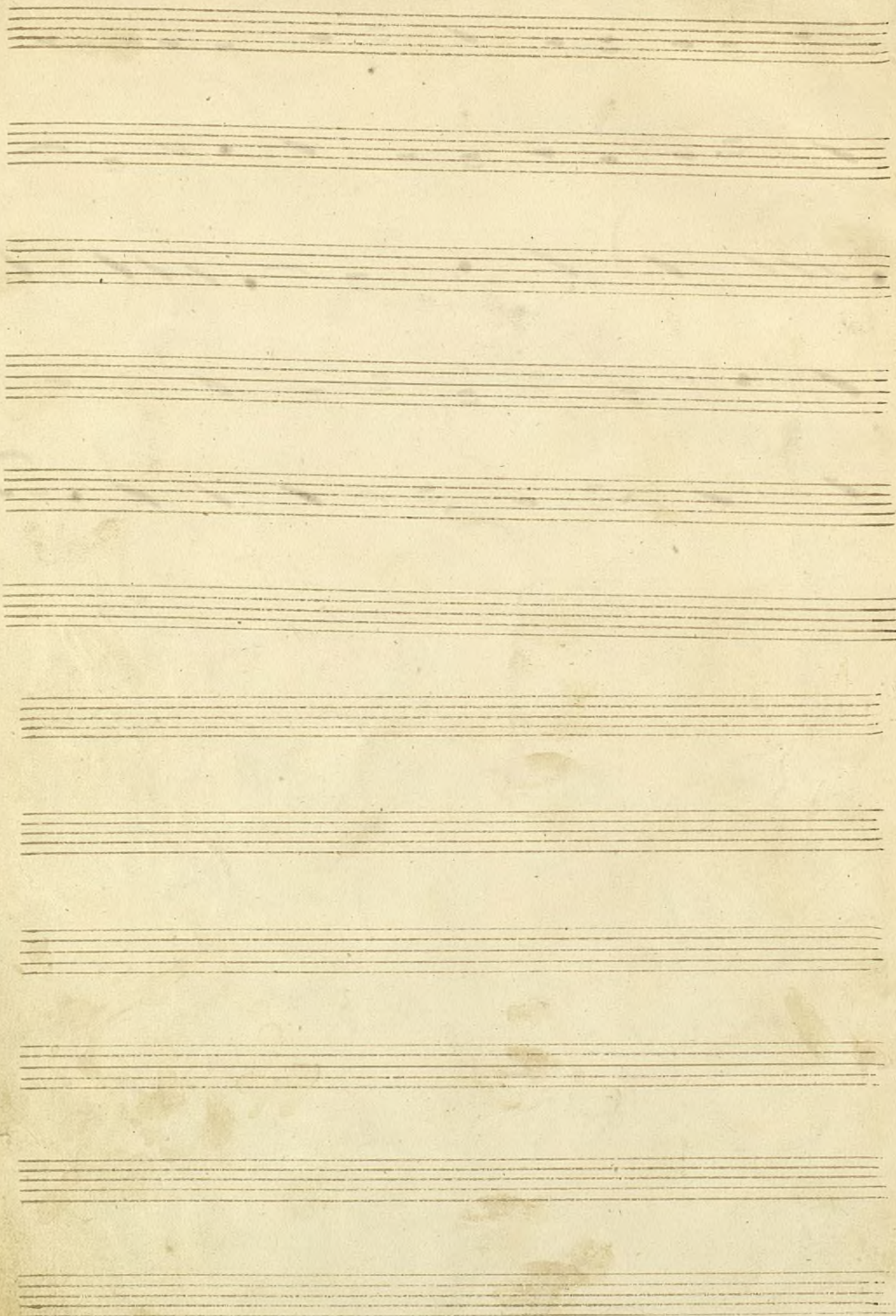


*Sinfonia Zampar.**Figle.**All.^o Vivace.**And.^{te} Maestoso**anigato.*





J^{no} M^o



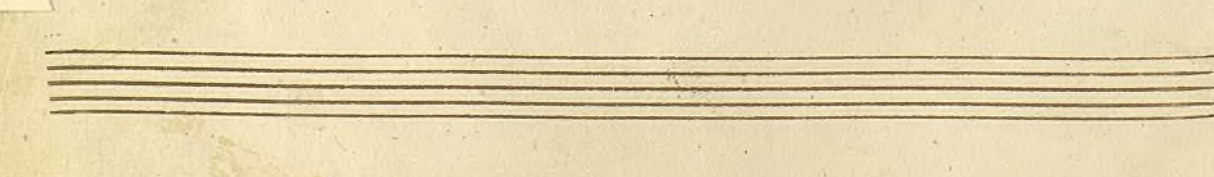
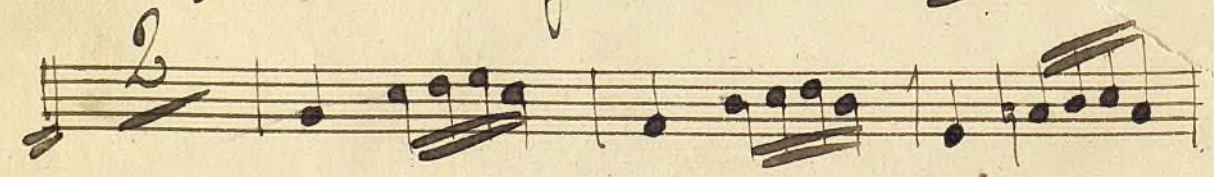
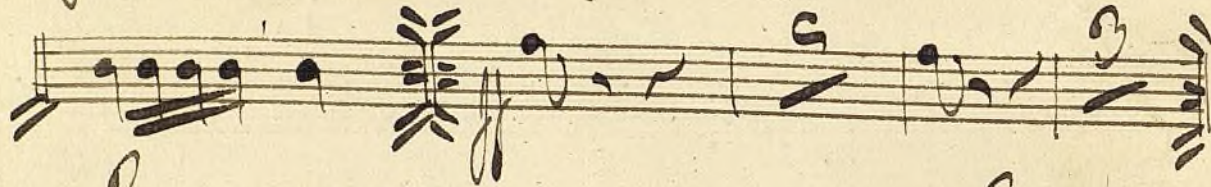
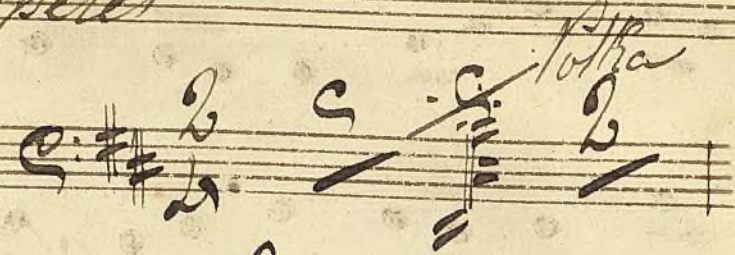
II

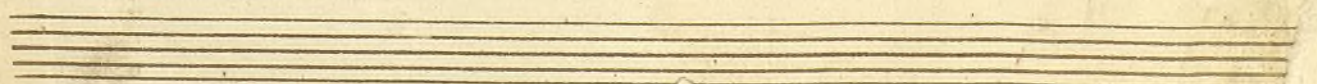
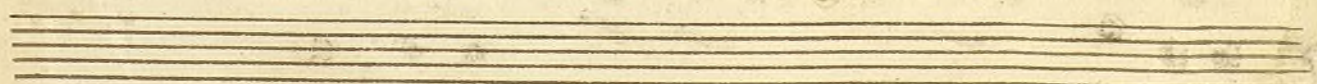
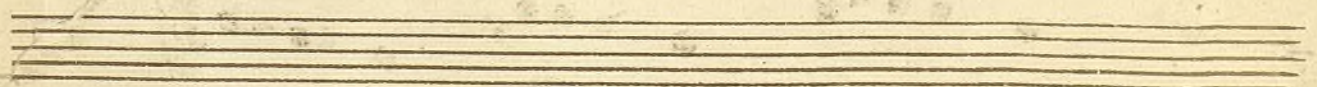
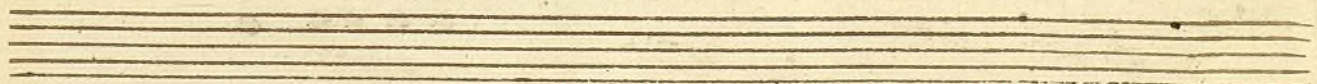
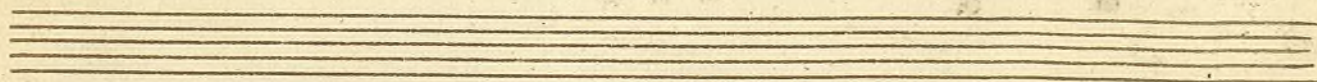
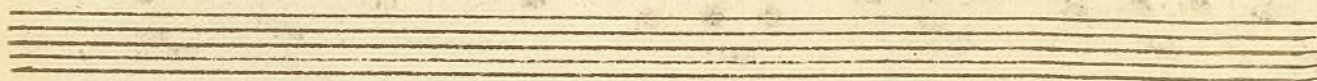
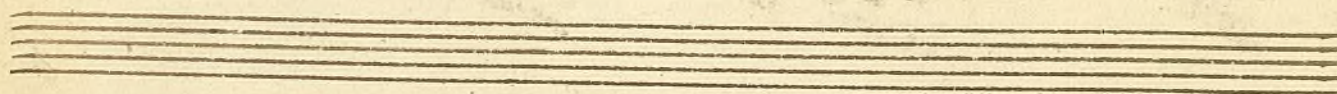
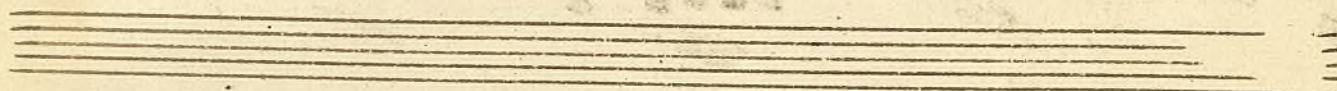
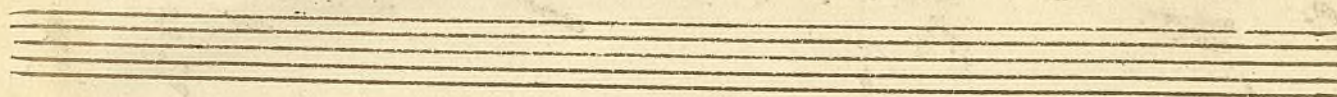
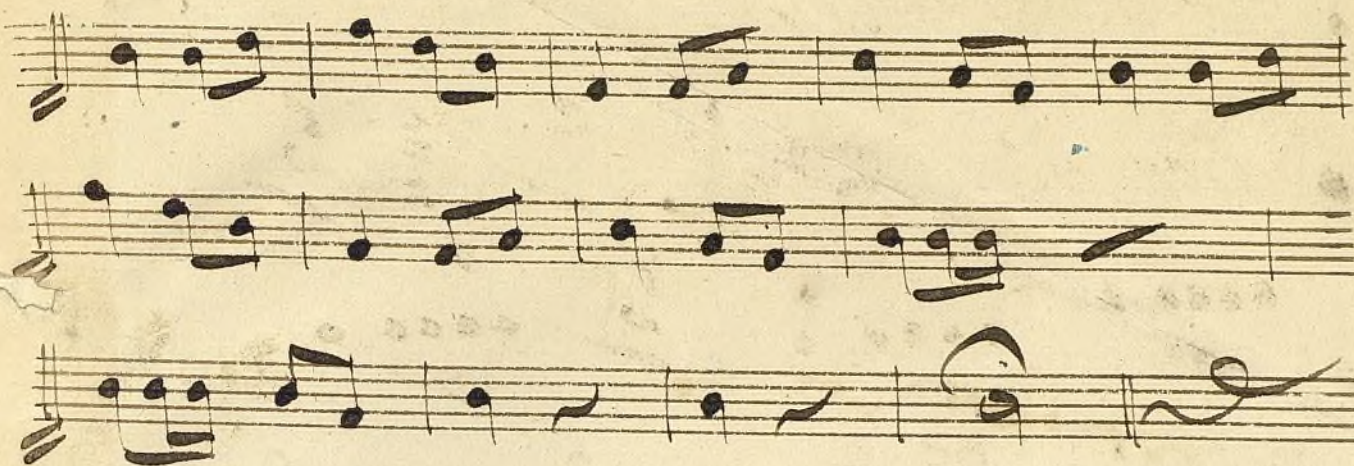
*Figliole**Polka de trompetes*

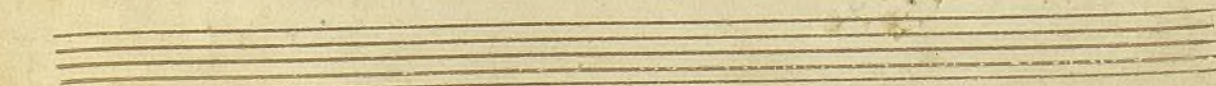
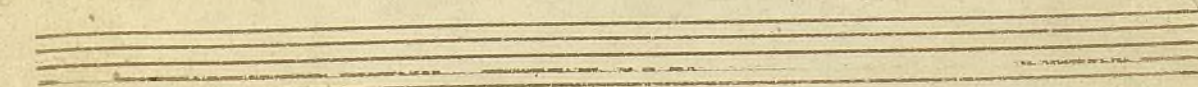
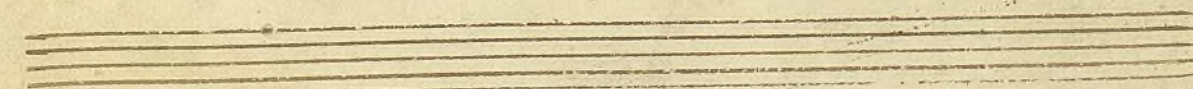
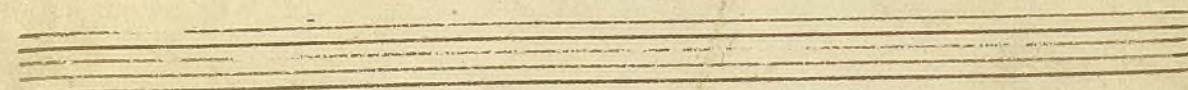
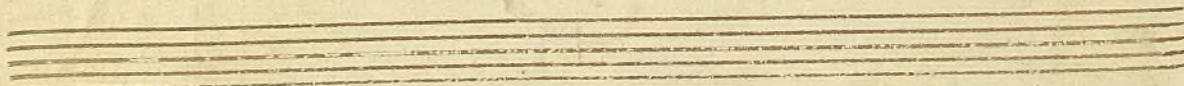
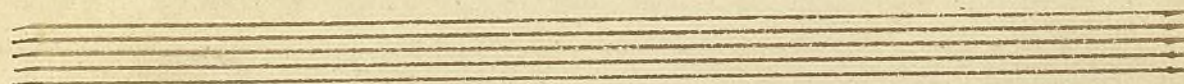
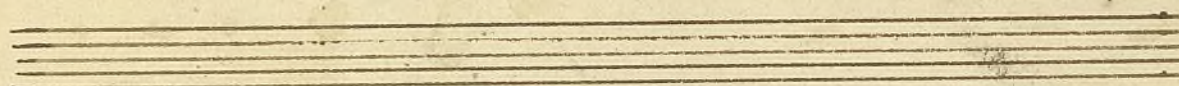
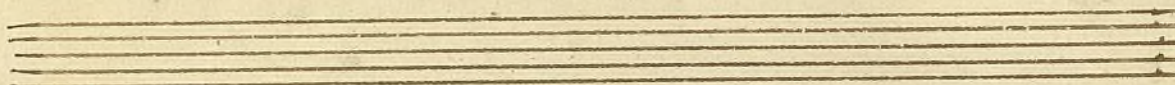
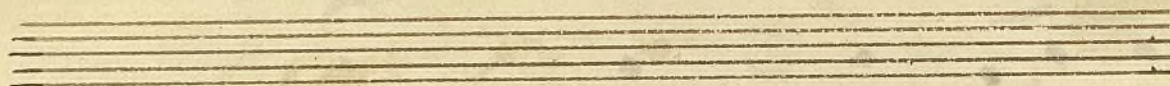
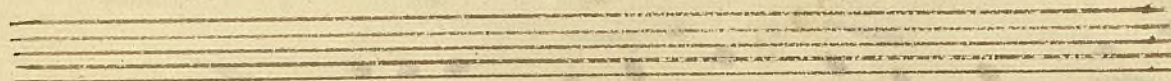
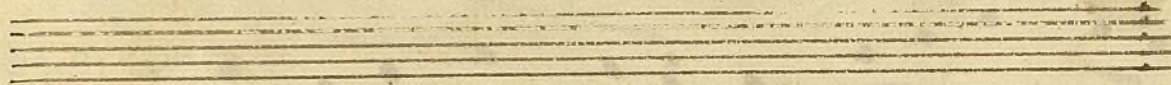
Vigleide

Potica de trompetas

Introduccion





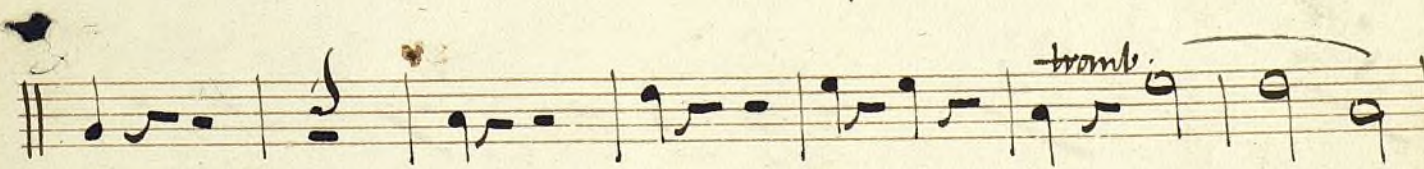
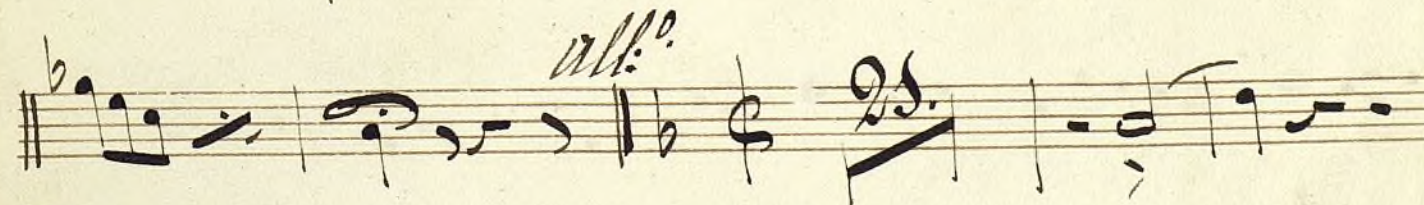
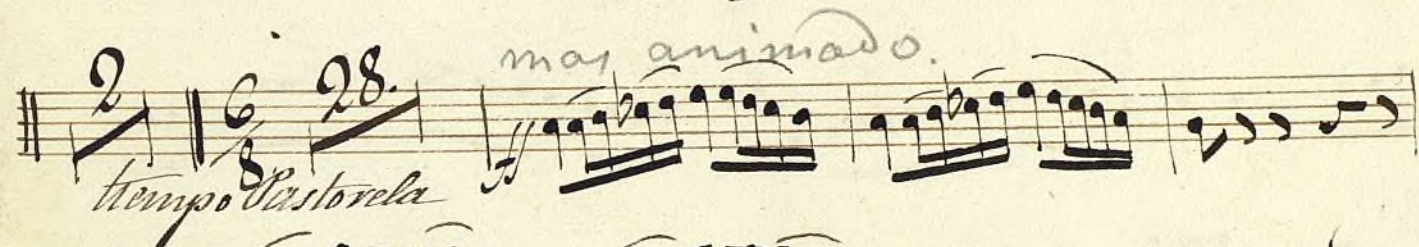
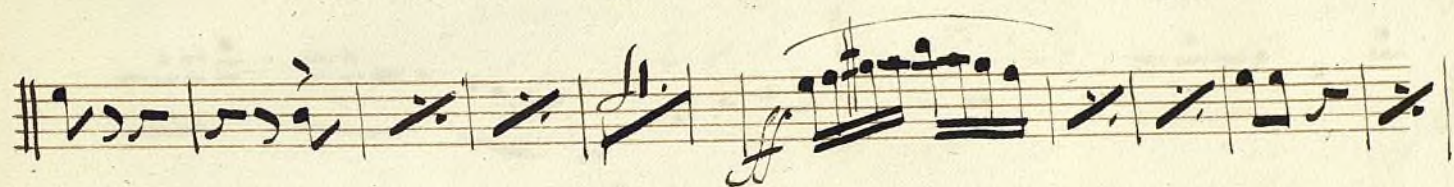
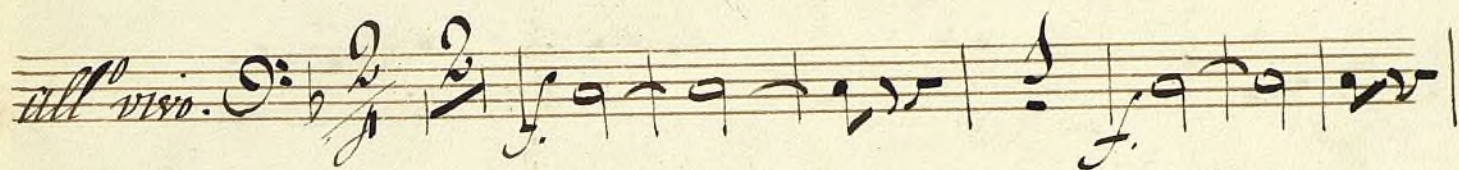


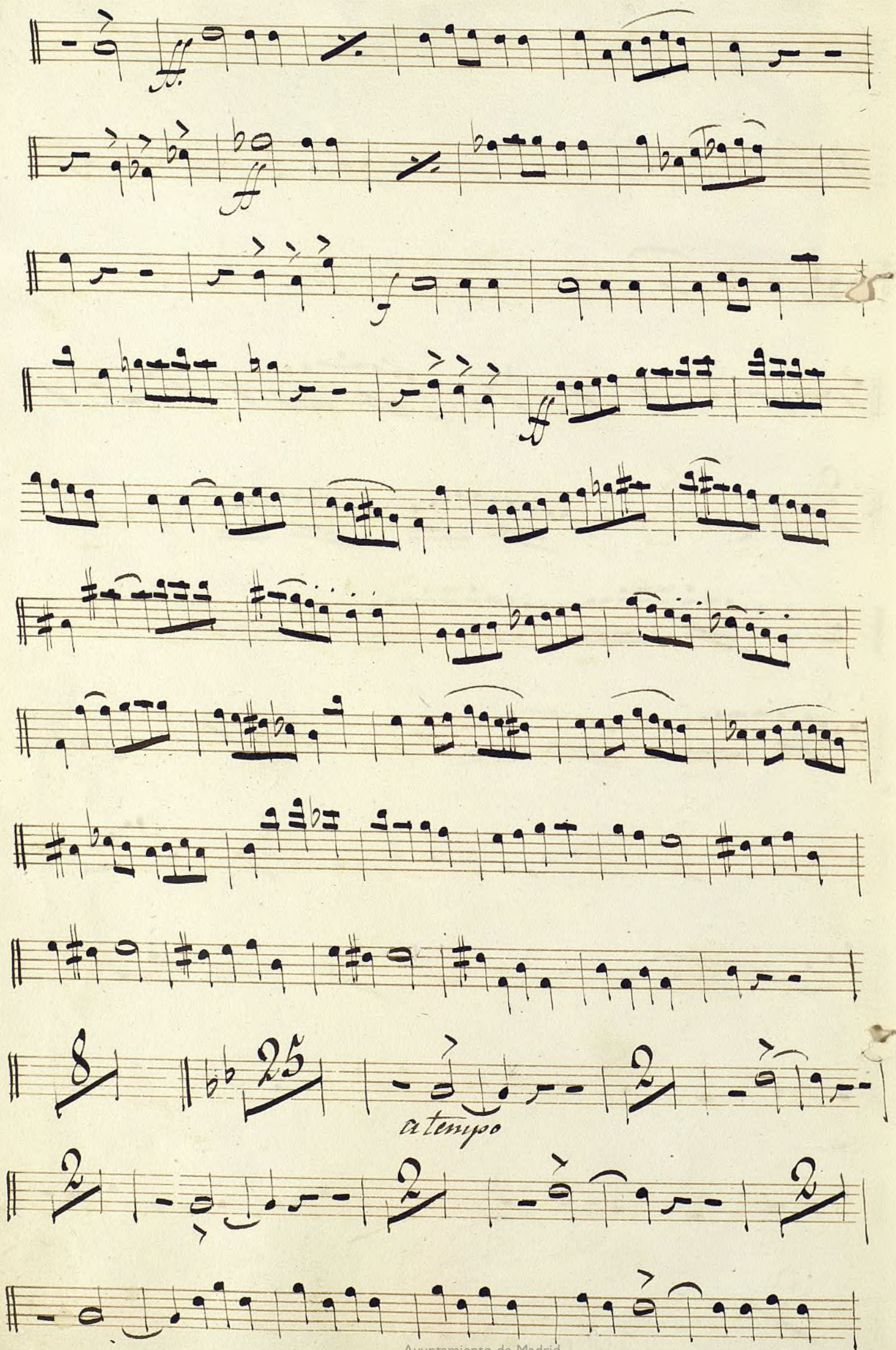
Sinfonia por M. Suban

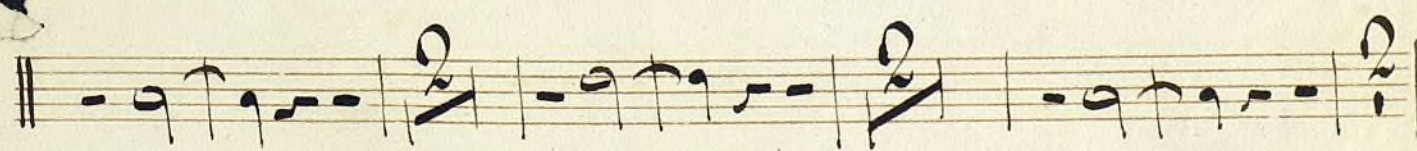
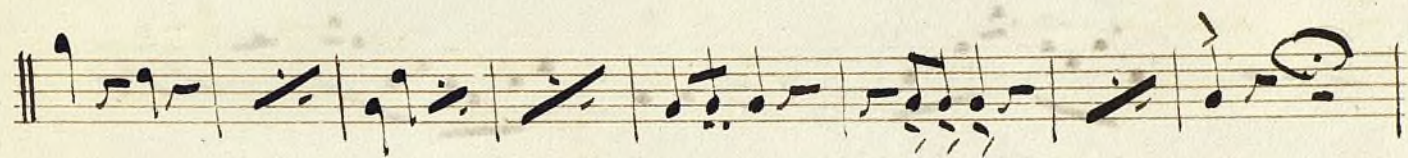
12

Fagle

24









I3


26

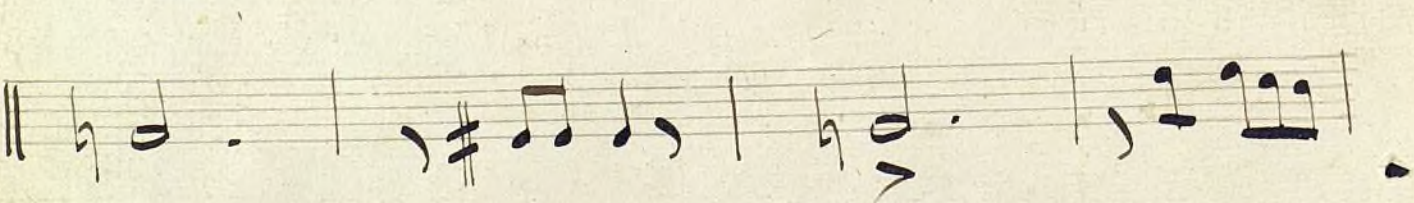
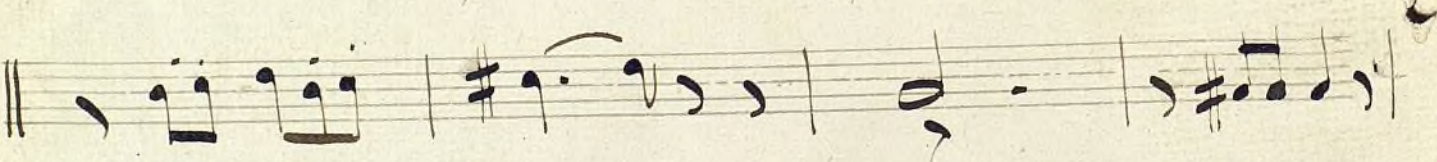
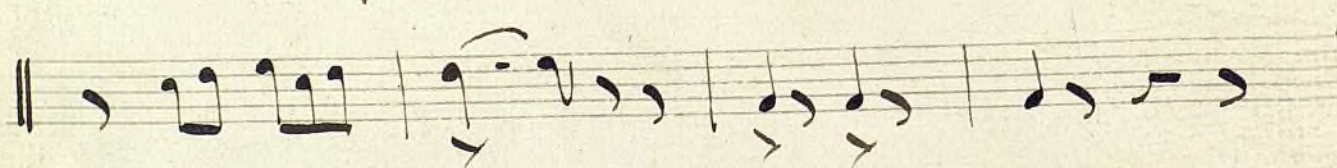
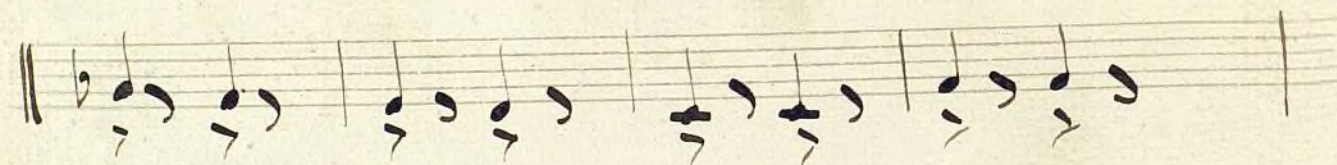
Cimbasso

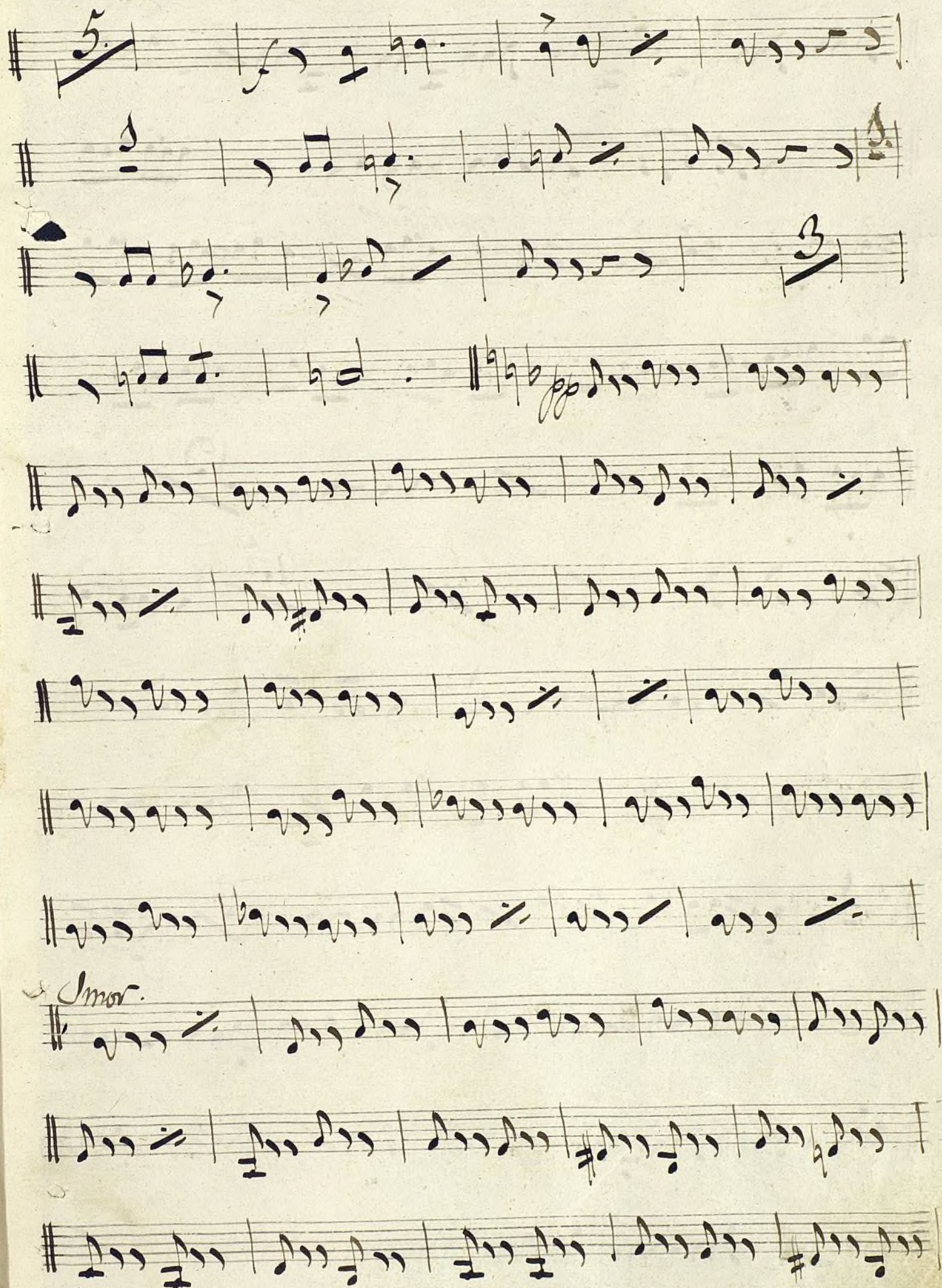
Santasia

del ritmo mercadante

Fantasia de mercaderante

and, te, 





|| דא דא דא דא דא דא דא דא ||

|| פא פא פא פא פא פא פא פא ||

|| *molto fact.* פא פא פא פא פא פא פא פא ||

|| פא פא פא פא פא פא פא פא ||

|| ~~פא פא פא פא פא פא פא פא~~ 19 ||

|| ~~פא פא פא פא פא פא פא פא~~ 15 ||

|| פא פא פא פא פא פא פא פא ||

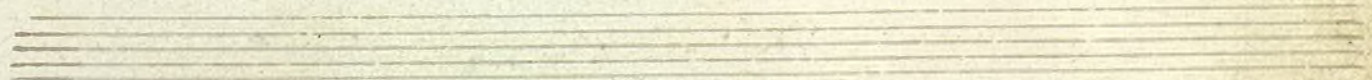
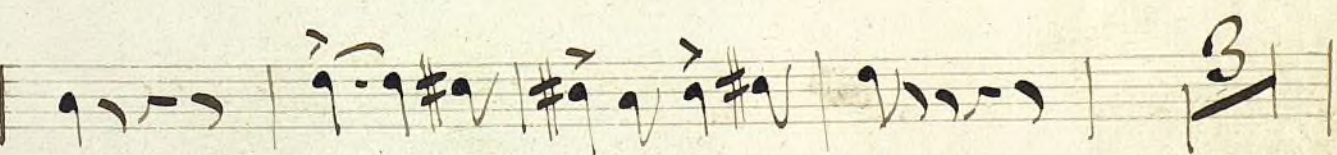
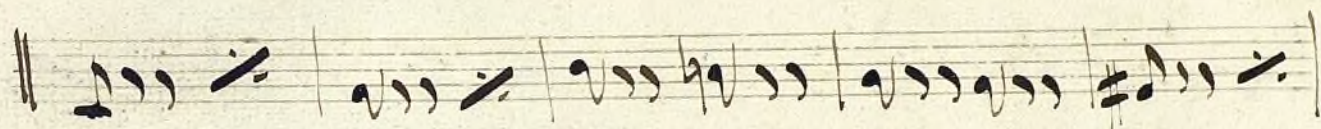
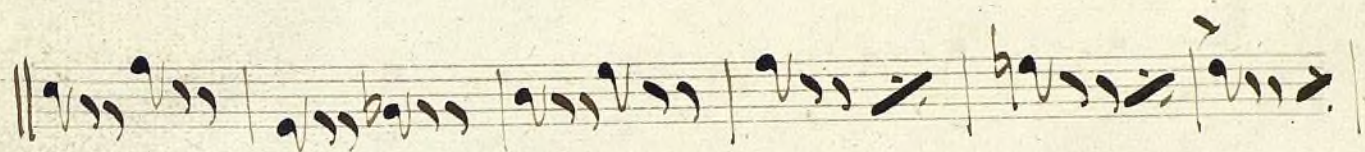
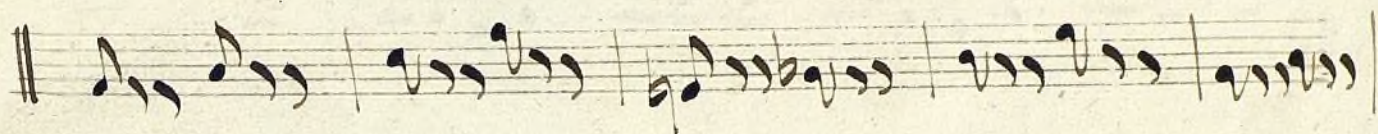
|| פא פא פא פא פא פא פא פא ||

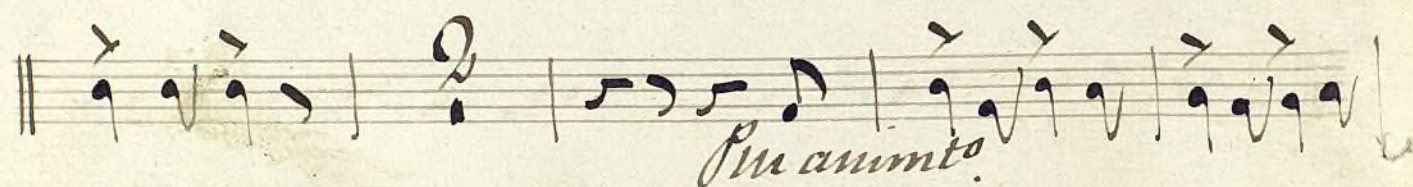
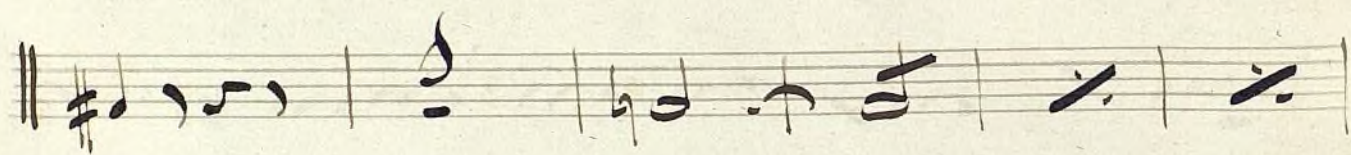
|| פא פא פא פא פא פא פא פא ||

|| פא פא פא פא פא פא פא פא ||

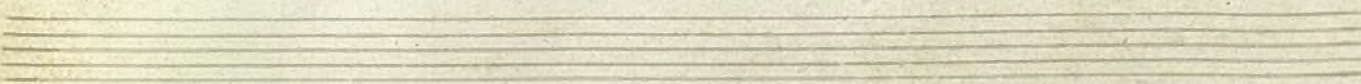
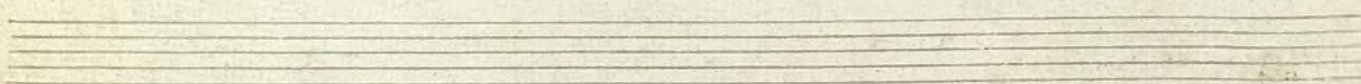
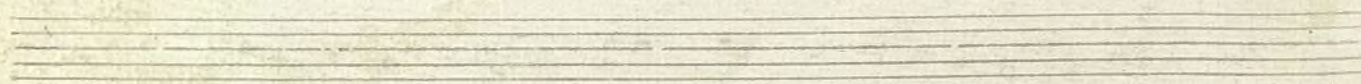
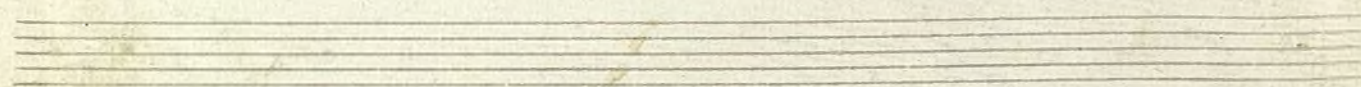
|| פא פא פא פא פא פא פא פא ||

|| פא פא פא פא פא פא פא פא ||



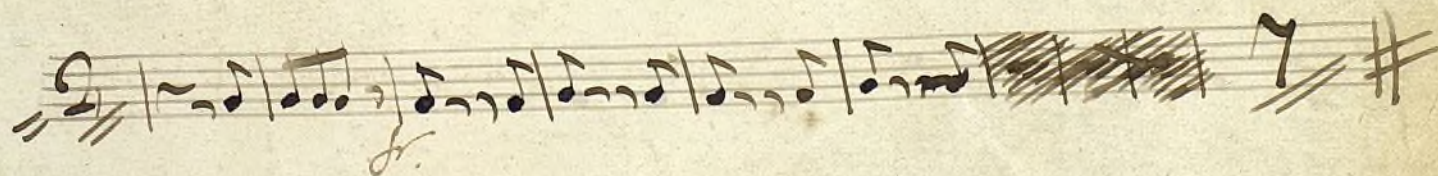
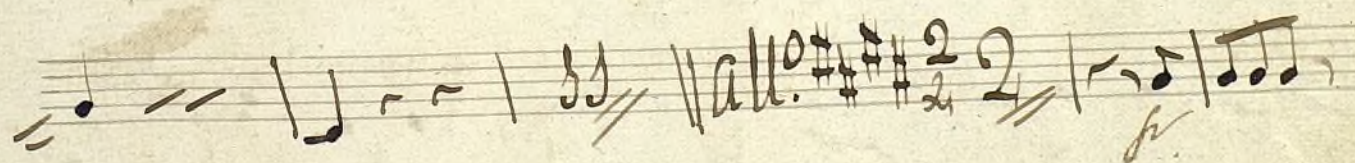
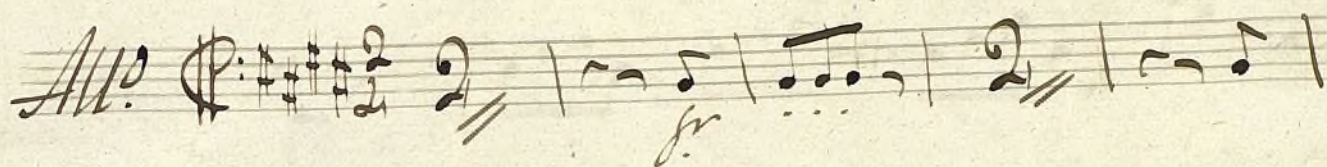


Plu animato



Laberinto

Figle



Polka $\text{C}:\sharp\sharp\sharp\sharp\frac{2}{4}$ 8 *marcato*

8

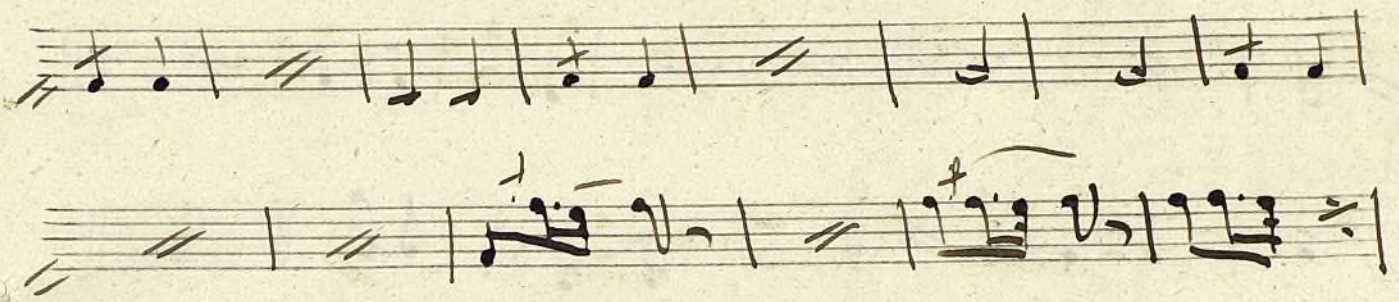
8

2

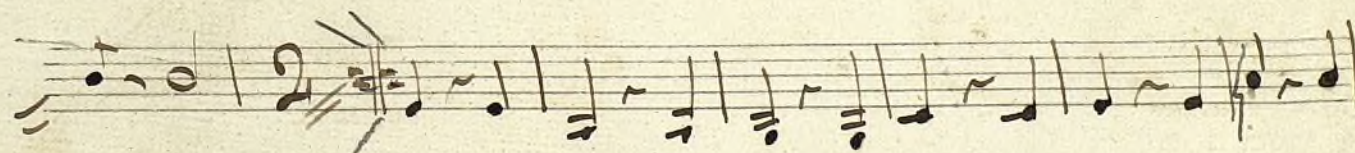
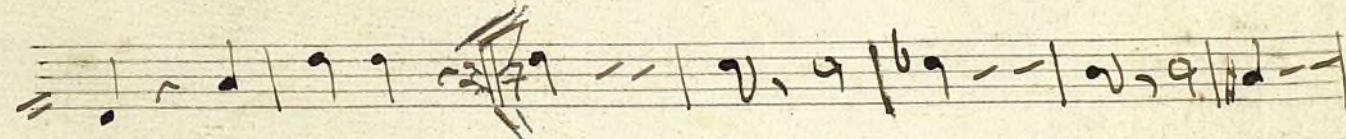
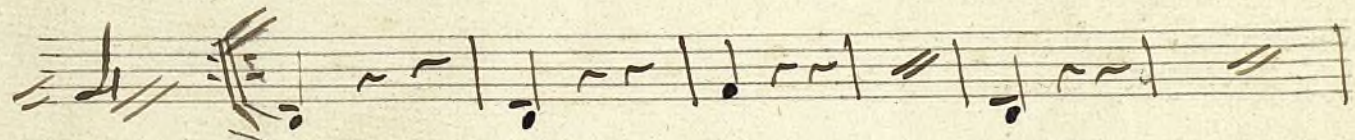
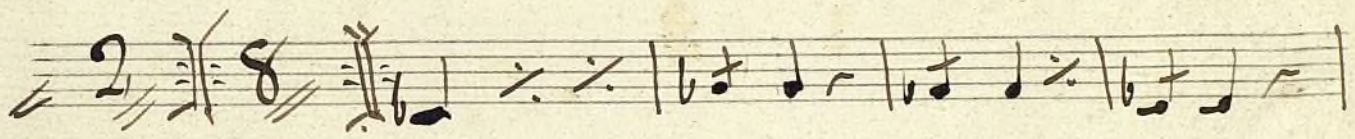
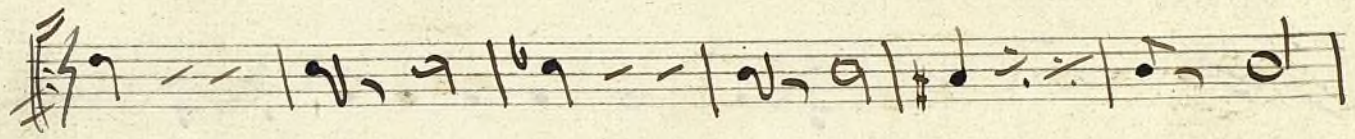
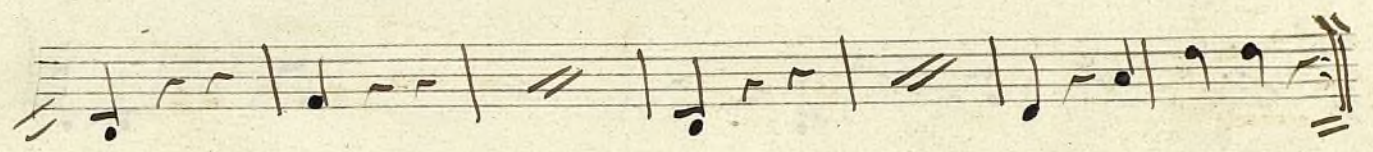
marcato

6

8



2. ~~8~~ || *Mazurka* 4/4 2/4



Galop 2/4 2/4

