

Establecimiento de encuadernaciones y rayados de J. Escobar, Jacometrezo, 65.

Arquitectura de Madrid

Mus 675

1

Figle.

La Prusiana

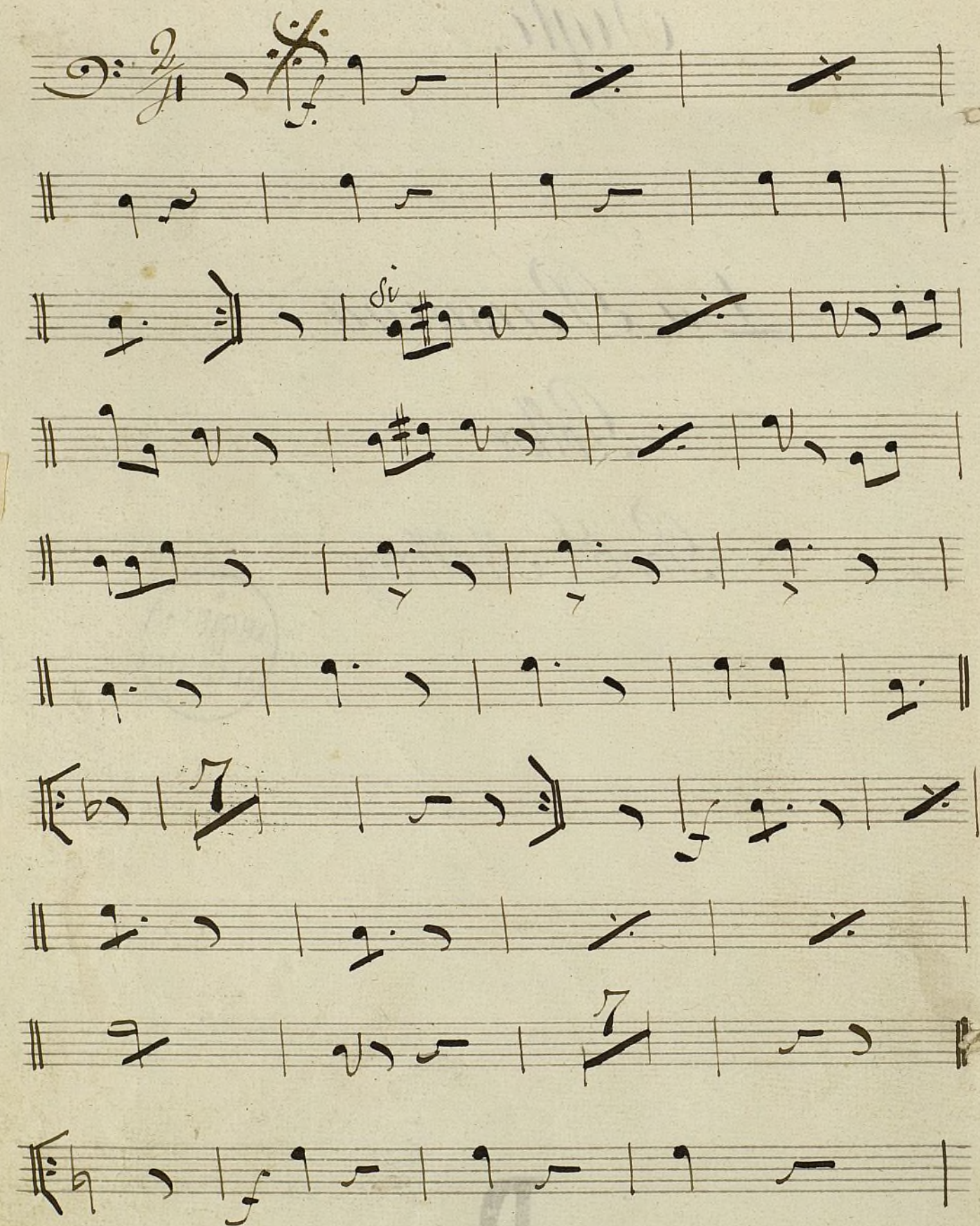
Polka

Por J. Mollberg



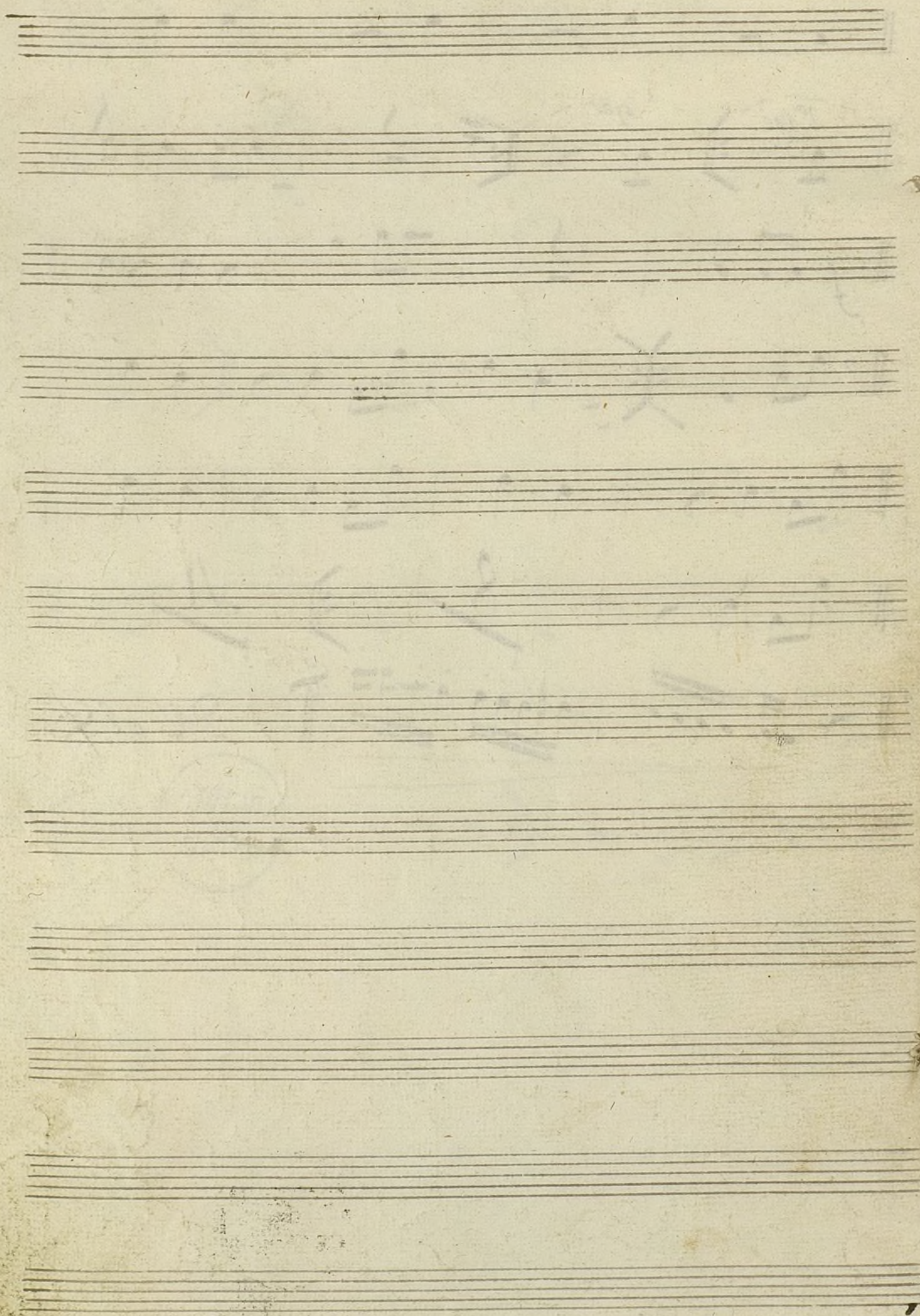
D

La Prusiana Polka



Handwritten musical score on eight staves. The notation includes various notes, rests, and dynamic markings. The second staff features a first ending bracket labeled "1^o vez" and a second ending bracket labeled "2^a". The sixth staff contains a large "8" marking above a measure. The seventh staff ends with the instruction "De al. §".





Valz. El Garmin por Jose Jurch. 2 Serpant. 3.

Mus 675

Introd. me Largo. 3/4

13

13

14



con forza

1a

2a

12

3.

4.

Ayuntamiento de Madrid

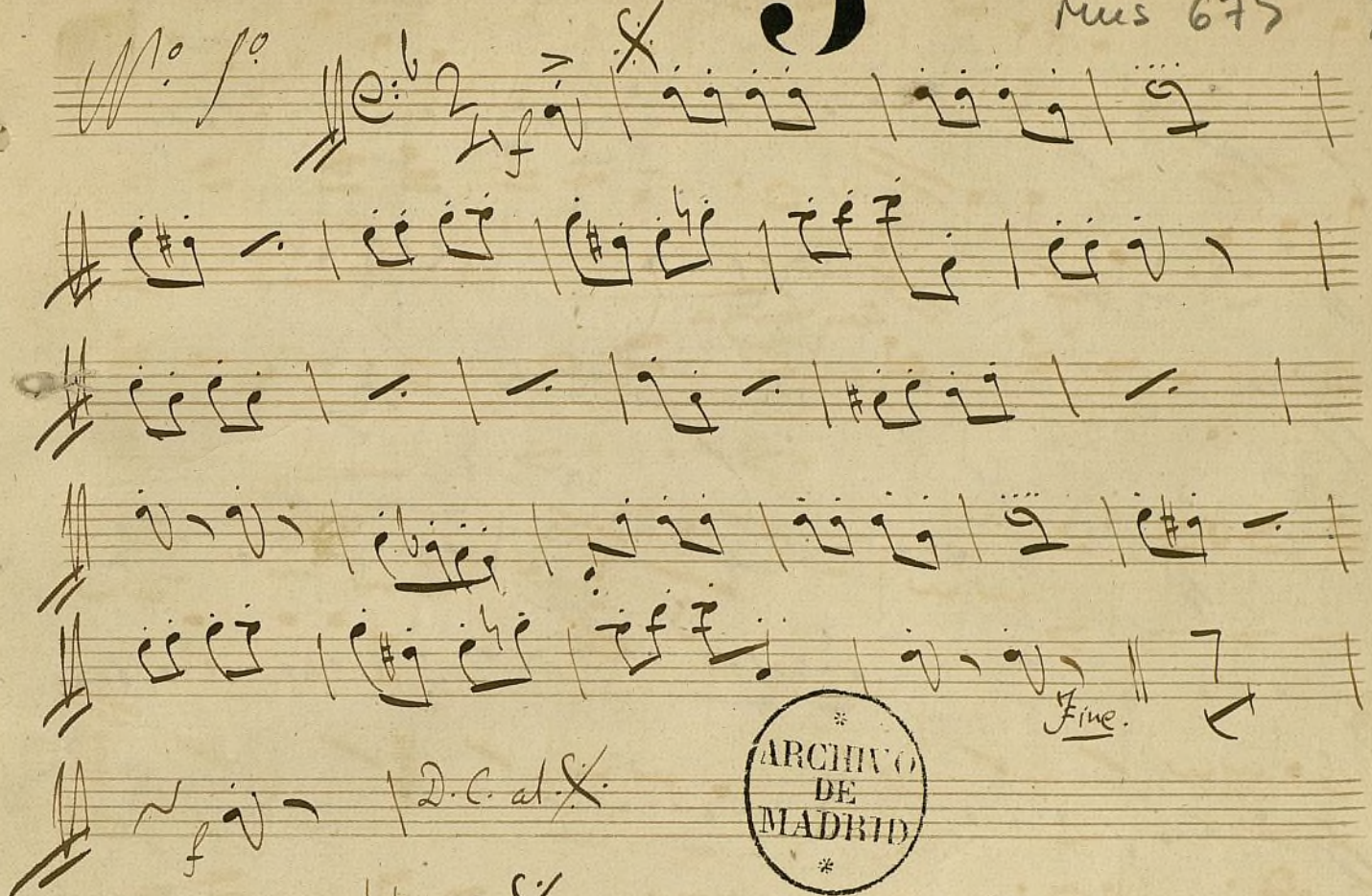
Handwritten musical score on ten staves. The notation includes various notes, rests, and bar lines. Measure numbers 16, 6, 1, 7, 5, 10, 8, and 12 are written above the staves. The word "Coda" is written on the fifth staff. The score concludes with a large, stylized flourish on the eighth staff.



Handwritten musical score on ten staves. The notation includes various musical symbols such as notes, rests, and dynamic markings. The word "con forza" is written above the third staff. The score is divided into sections by double bar lines, with some sections marked with numbers 1, 2, and 3. The handwriting is in ink on aged paper.

L'illusion: Quadrille par M^{re} 7. **5**

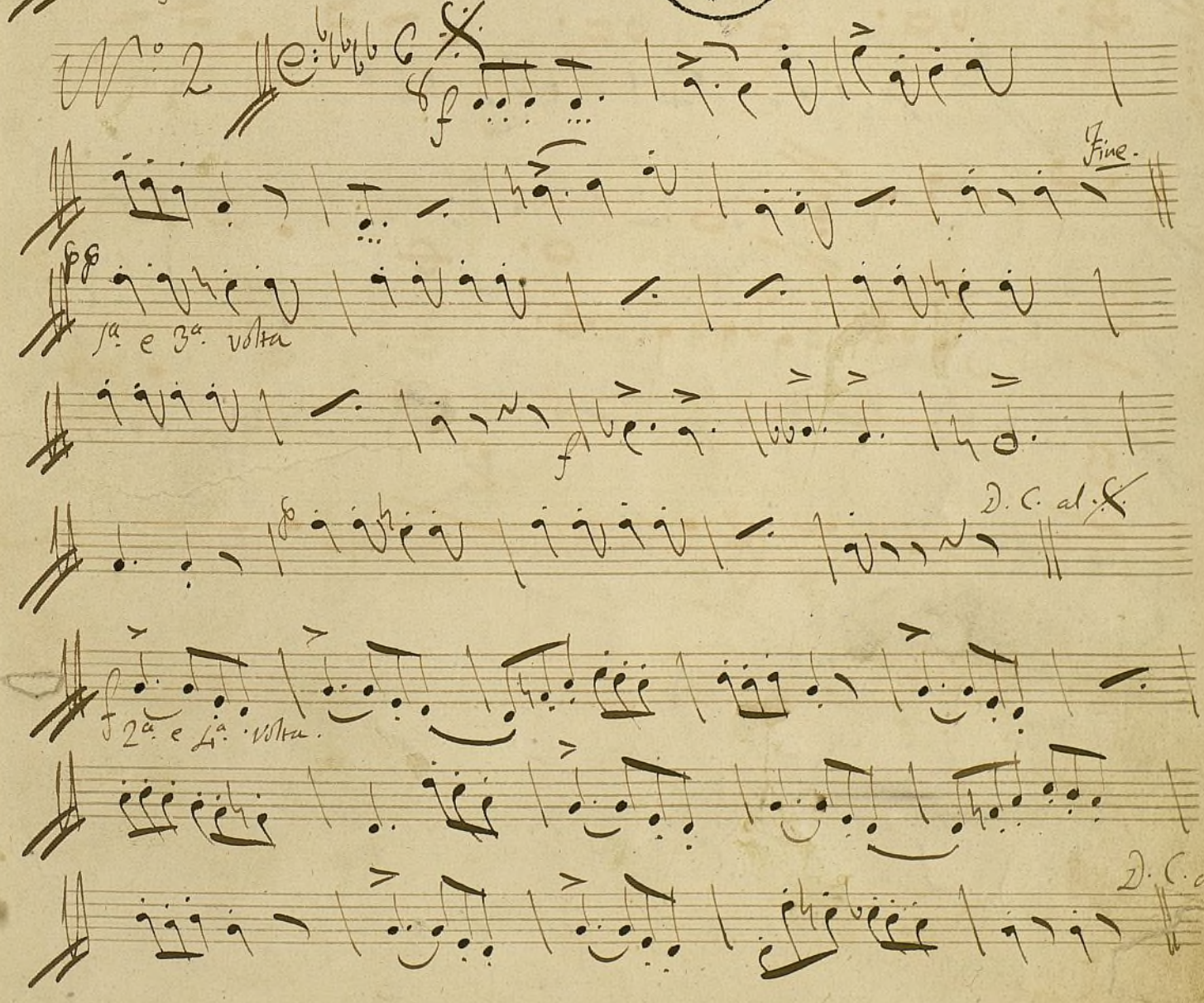
Sarpan en 7^{me}
Mus 675 9.

M^{re} 1^{re} 

Fine.

D.C. al. X.



M^{re} 2^a 

Fine.

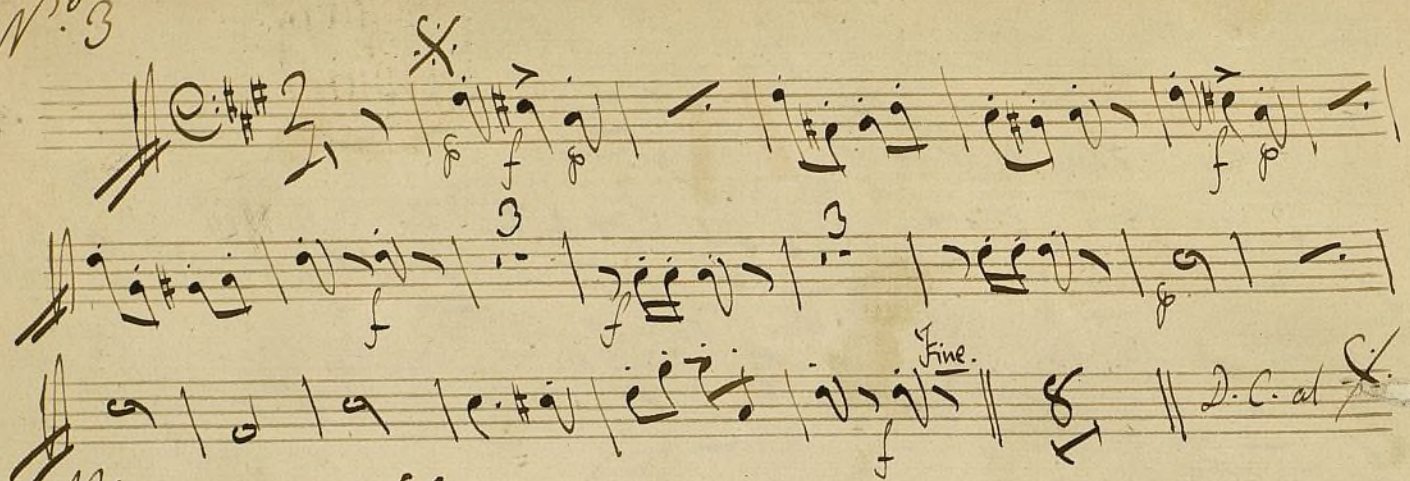
1^a e 3^a volta

D.C. al. X.

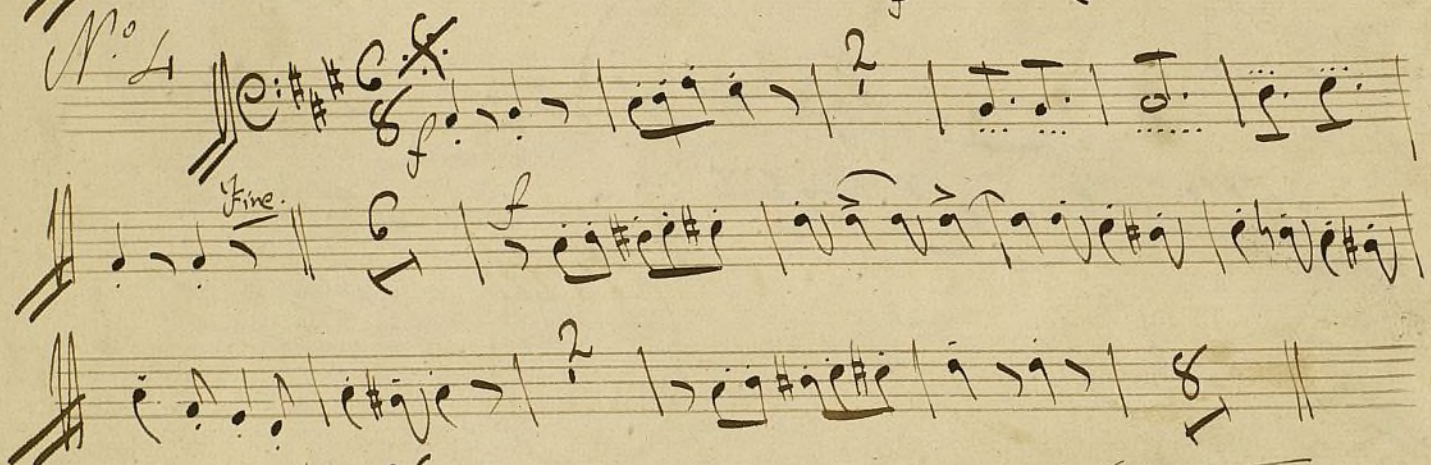
2^a e 4^a volta.

D.C. al.

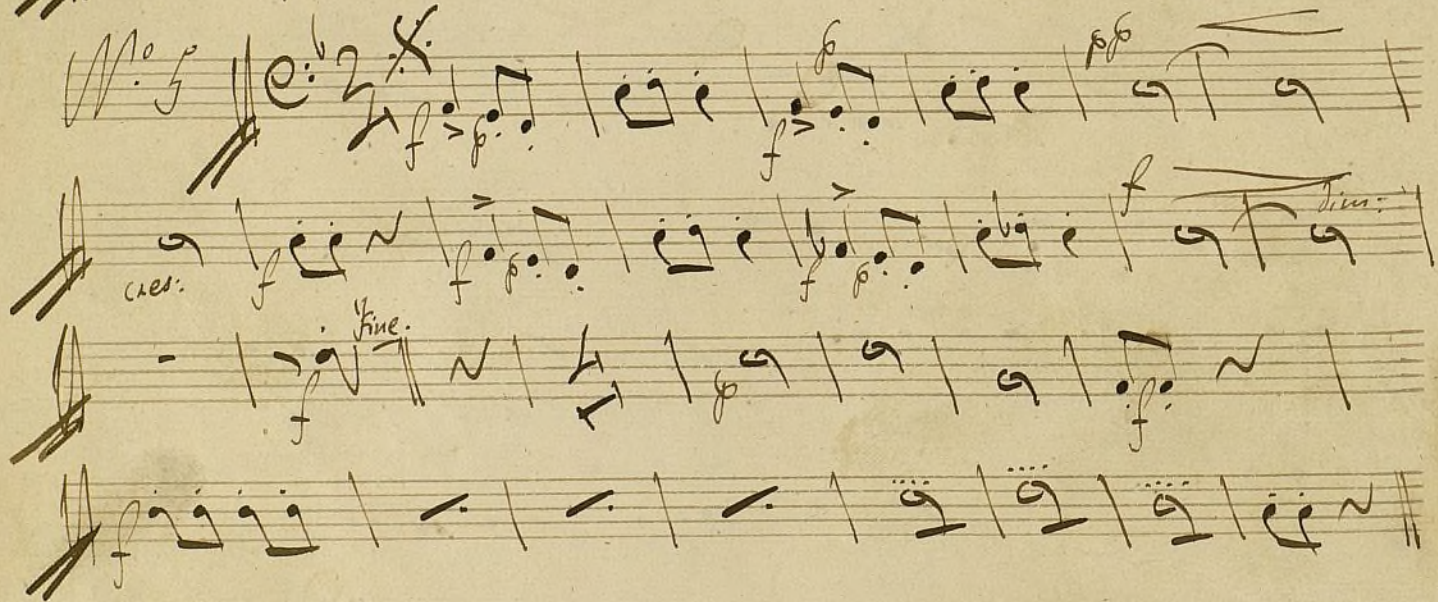
N^o 3



N^o 4



N^o 5



4.



mus 675

6.

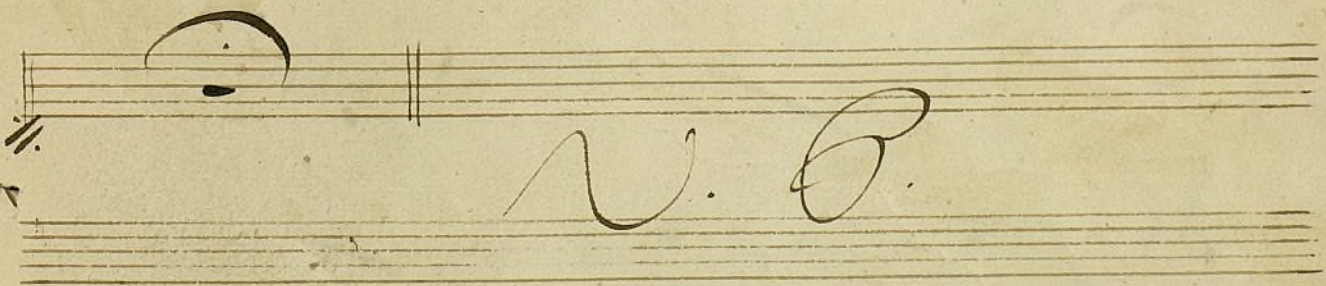
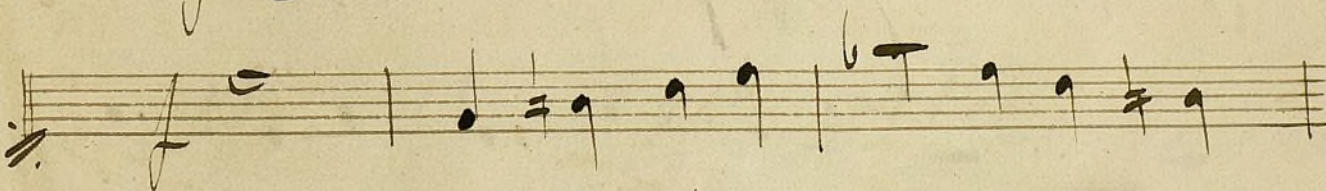
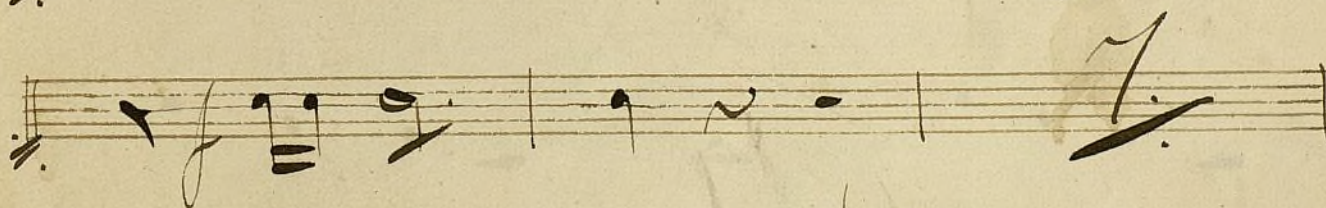
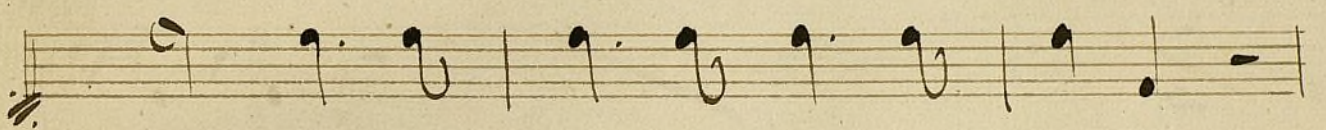
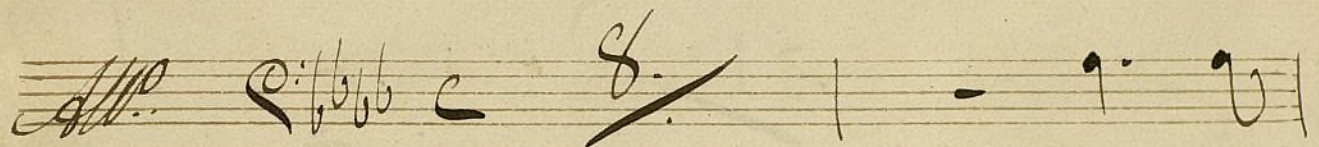
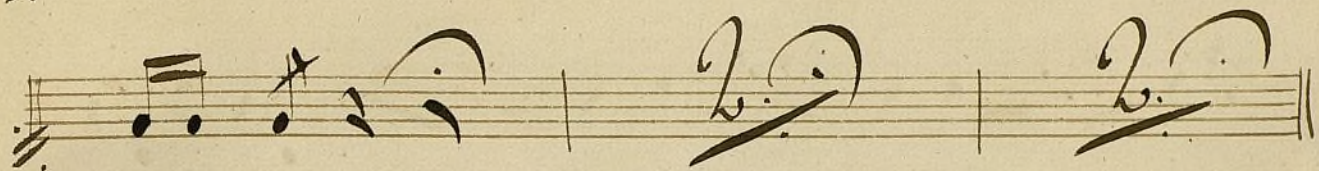
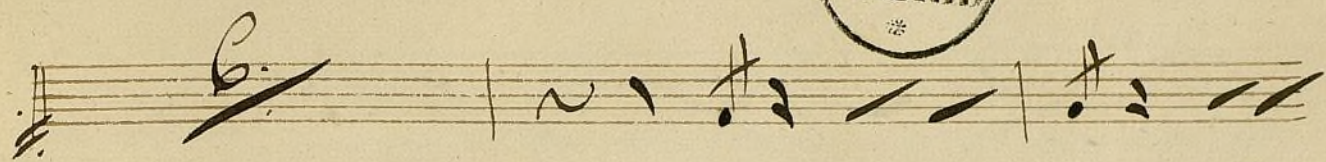
Figle

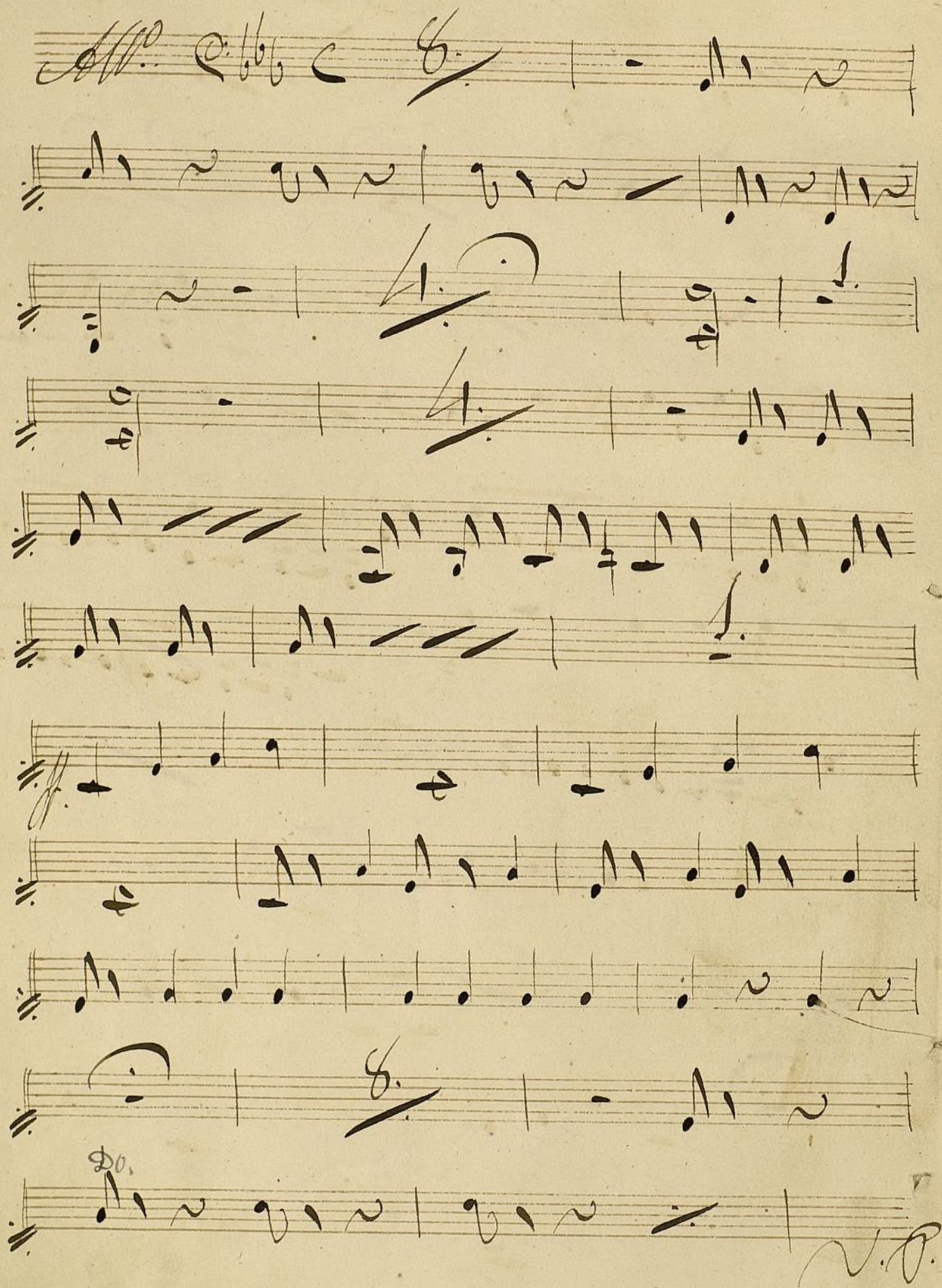
Aria dell'arinete

Nel Opera Macbeth.

Figle

Handwritten musical score for a piece titled "Figle". The score is written on ten staves. The first staff begins with a treble clef, a common time signature (C), and a 3/4 time signature. The music is in G major, indicated by a single sharp (F#). The notation includes various note values, rests, and dynamic markings such as "f." (forte). There are several triplets marked with a "3" and a slash. The score concludes with a double bar line and a repeat sign. Below the main score, there is a section labeled "And. no" (Andante no) in 6/8 time, with a key signature of two flats (Bb and Eb). This section also includes a 10/8 time signature and a 7/8 time signature. The notation continues with notes and rests, including a note marked "mi".

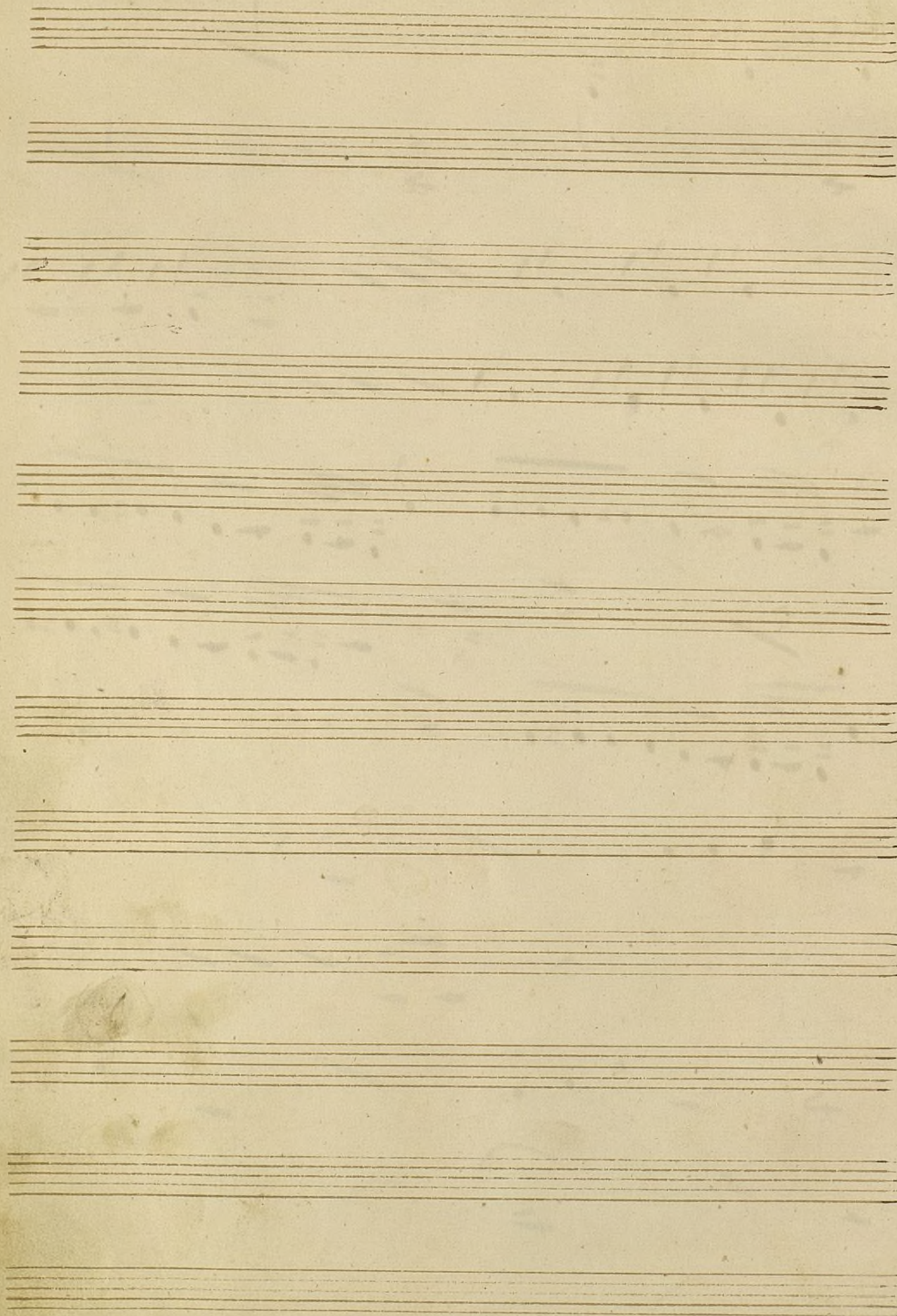






8.

Handwritten musical score on ten staves. The notation includes various note values (quarter, eighth, sixteenth notes), rests, and slurs. The manuscript shows signs of age, including ink bleed-through from the reverse side and some staining. The first staff begins with a treble clef and a key signature of one flat. The notation is dense, particularly in the middle staves, with many beamed notes and slurs indicating complex rhythmic patterns.



Sinfonía El Fudio Errante. 5. Sigle 5
Mus. 675

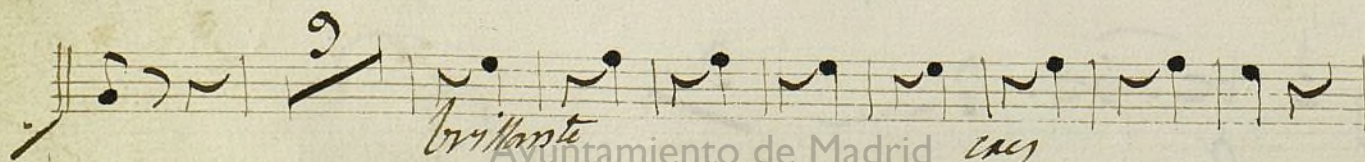
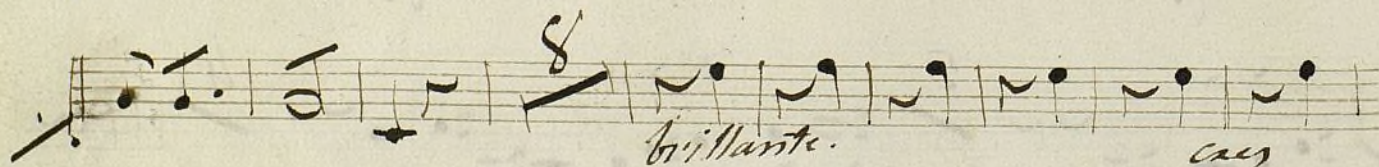
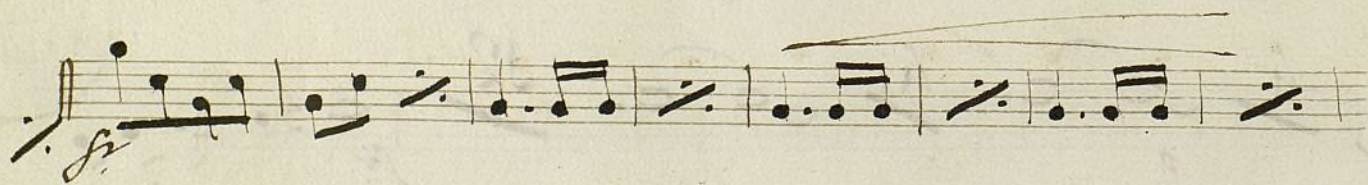
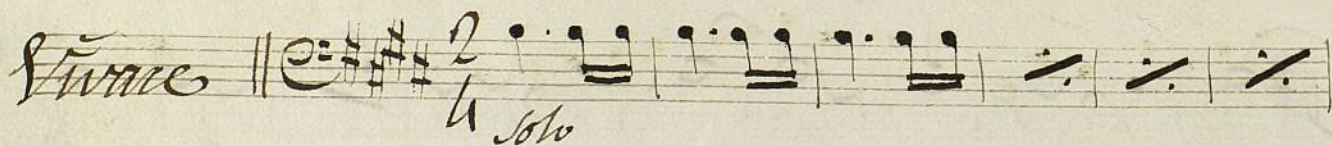
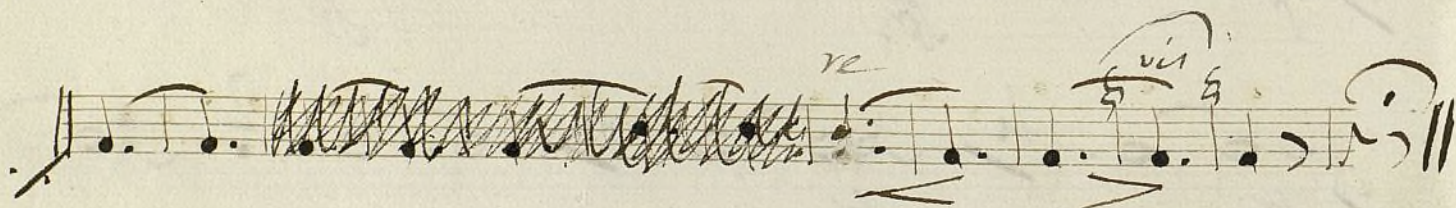
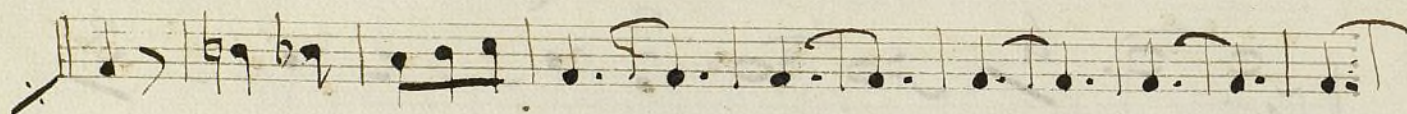
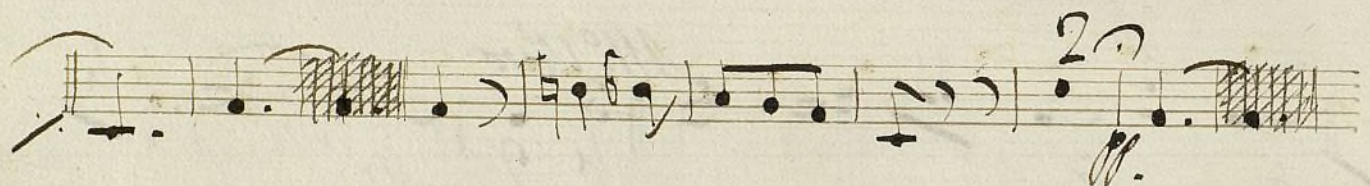
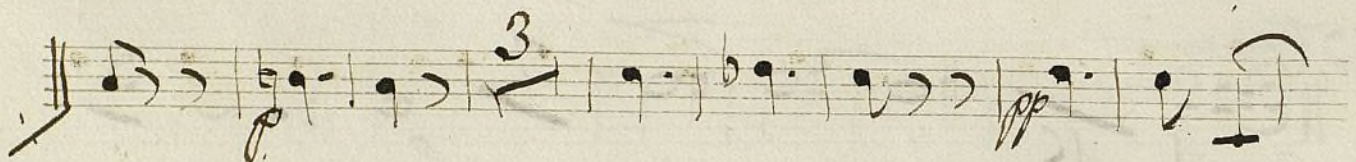
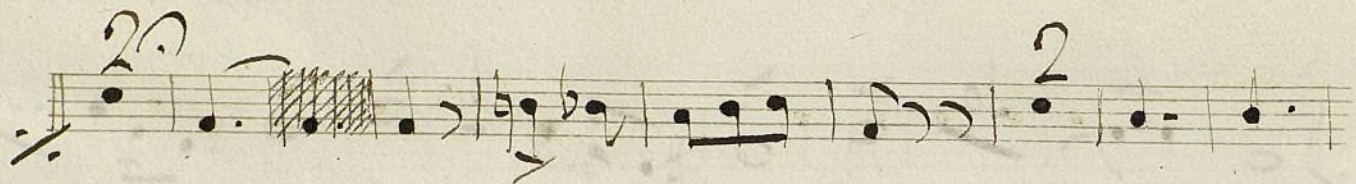
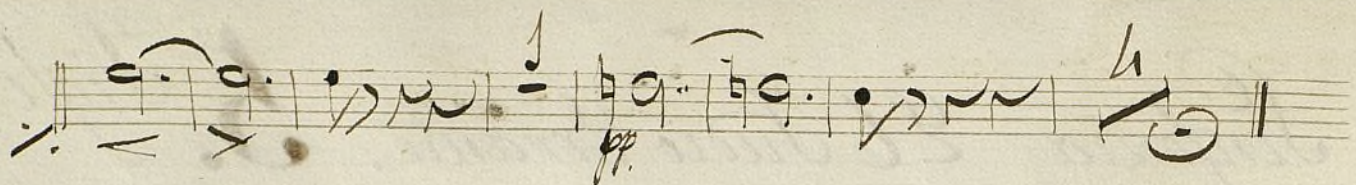
And. no mucho.

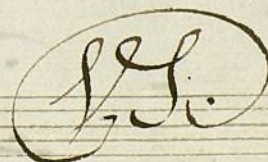
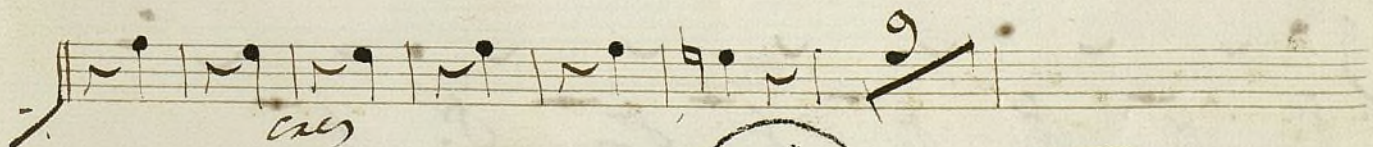
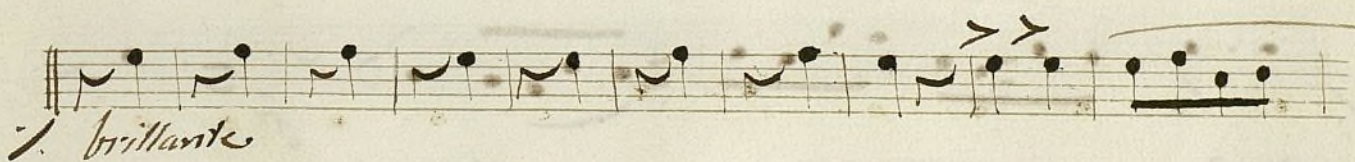
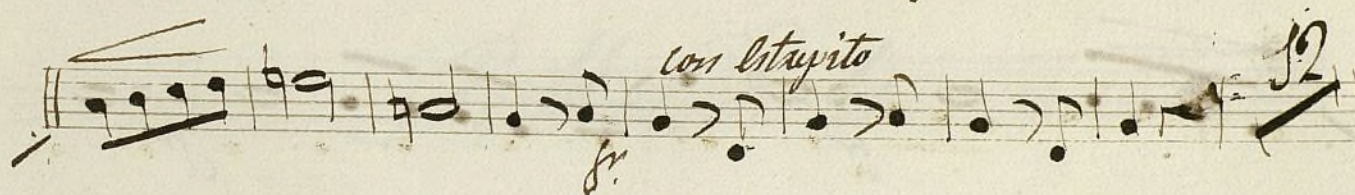
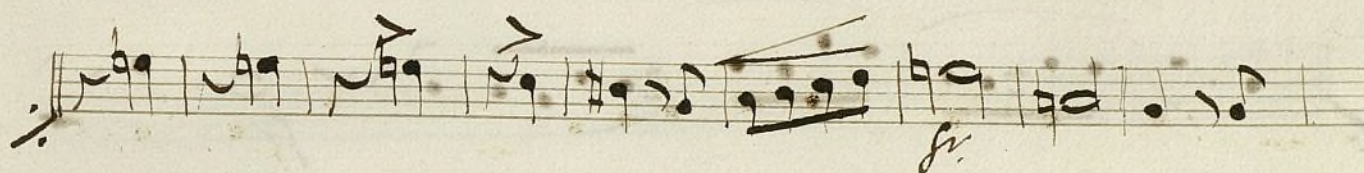
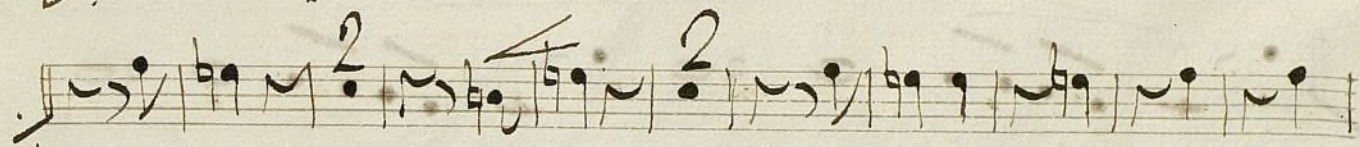
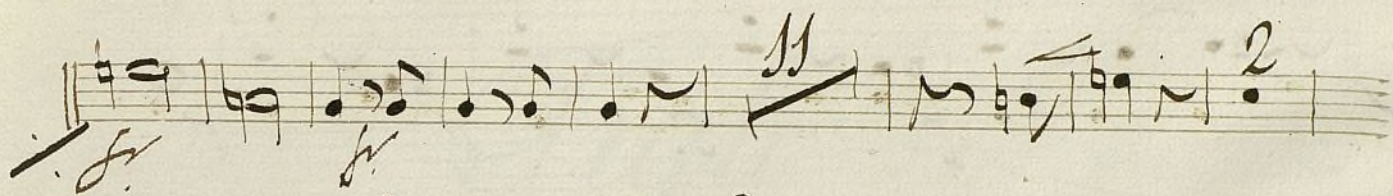
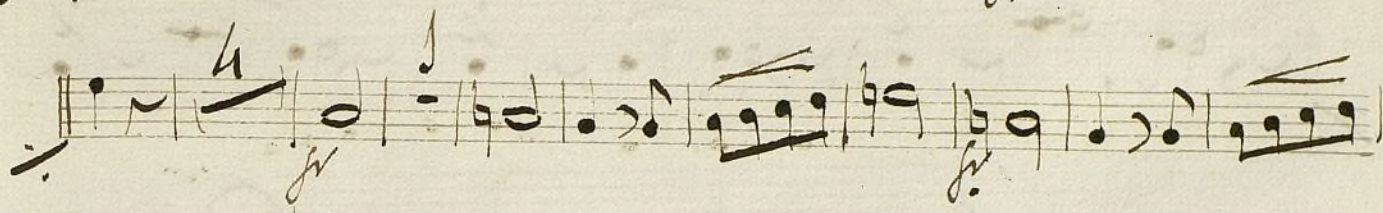
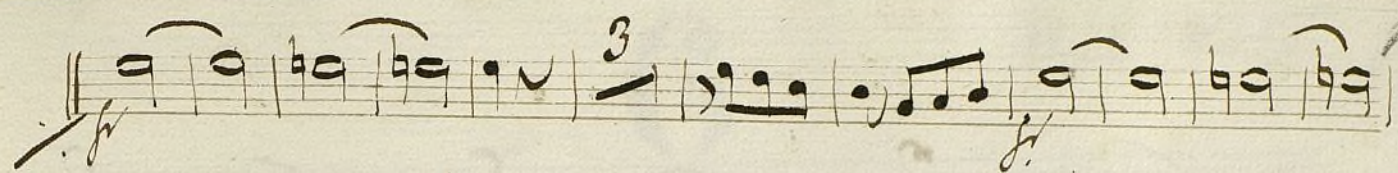
And. teppassivo

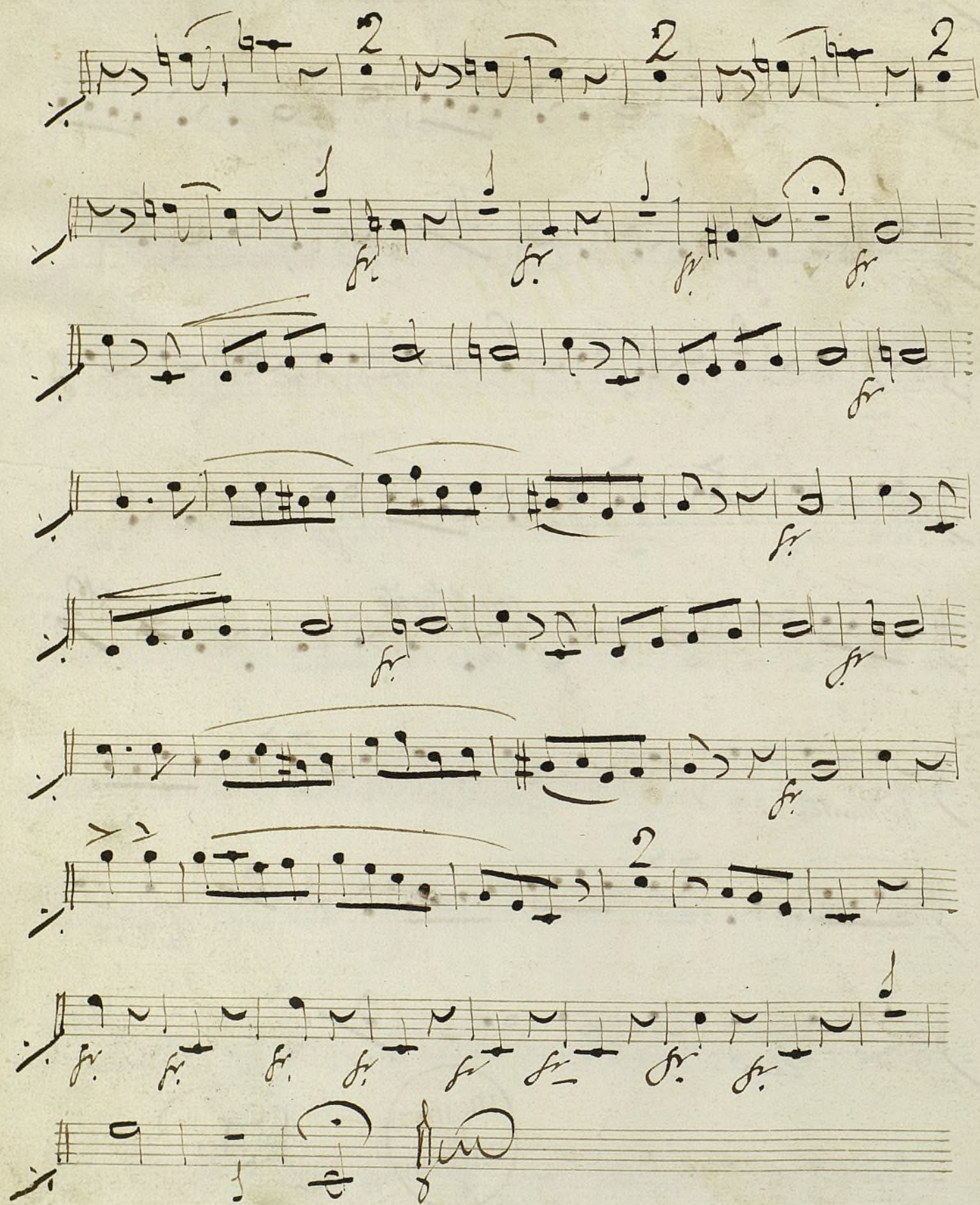
All. vivo

ARCHIVO
DE
MADRID

Ayuntamiento de Madrid







6

Mus 675

1/1

Ficla
Los Gorreros

o sea

Potica Vals.



And^{te} Polka

alo 2^a vez y luego sigue sin parar.

Handwritten musical notation on a five-line staff, featuring a treble clef, a key signature of two flats (B-flat and E-flat), and a common time signature (C). The notation includes a half note, a quarter note, and a quarter rest.

Handwritten musical notation on a five-line staff, featuring a treble clef, a key signature of two flats, and a common time signature. The notation includes a half note, a quarter note, and a quarter rest.

Handwritten musical notation on a five-line staff, featuring a treble clef, a key signature of two flats, and a common time signature. The notation includes a half note, a quarter note, and a quarter rest.

Handwritten musical notation on a five-line staff, featuring a treble clef, a key signature of two flats, and a common time signature. The notation includes a half note, a quarter note, and a quarter rest.

Handwritten musical notation on a five-line staff, featuring a treble clef, a key signature of two flats, and a common time signature. The notation includes a half note, a quarter note, and a quarter rest.

Handwritten musical notation on a five-line staff, featuring a treble clef, a key signature of two flats, and a common time signature. The notation includes a half note, a quarter note, and a quarter rest.

Handwritten musical notation on a five-line staff, featuring a treble clef, a key signature of two flats, and a common time signature. The notation includes a half note, a quarter note, and a quarter rest.

Handwritten musical notation on a five-line staff, featuring a treble clef, a key signature of two flats, and a common time signature. The notation includes a half note, a quarter note, and a quarter rest.

Handwritten musical notation on a five-line staff, featuring a treble clef, a key signature of two flats, and a common time signature. The notation includes a half note, a quarter note, and a quarter rest.

Handwritten musical notation on a five-line staff, featuring a treble clef, a key signature of two flats, and a common time signature. The notation includes a half note, a quarter note, and a quarter rest.

Handwritten musical notation on a five-line staff, featuring a treble clef, a key signature of two flats, and a common time signature. The notation includes a half note, a quarter note, and a quarter rest.

Handwritten musical notation on a five-line staff, featuring a treble clef, a key signature of two flats, and a common time signature. The notation includes a half note, a quarter note, and a quarter rest.



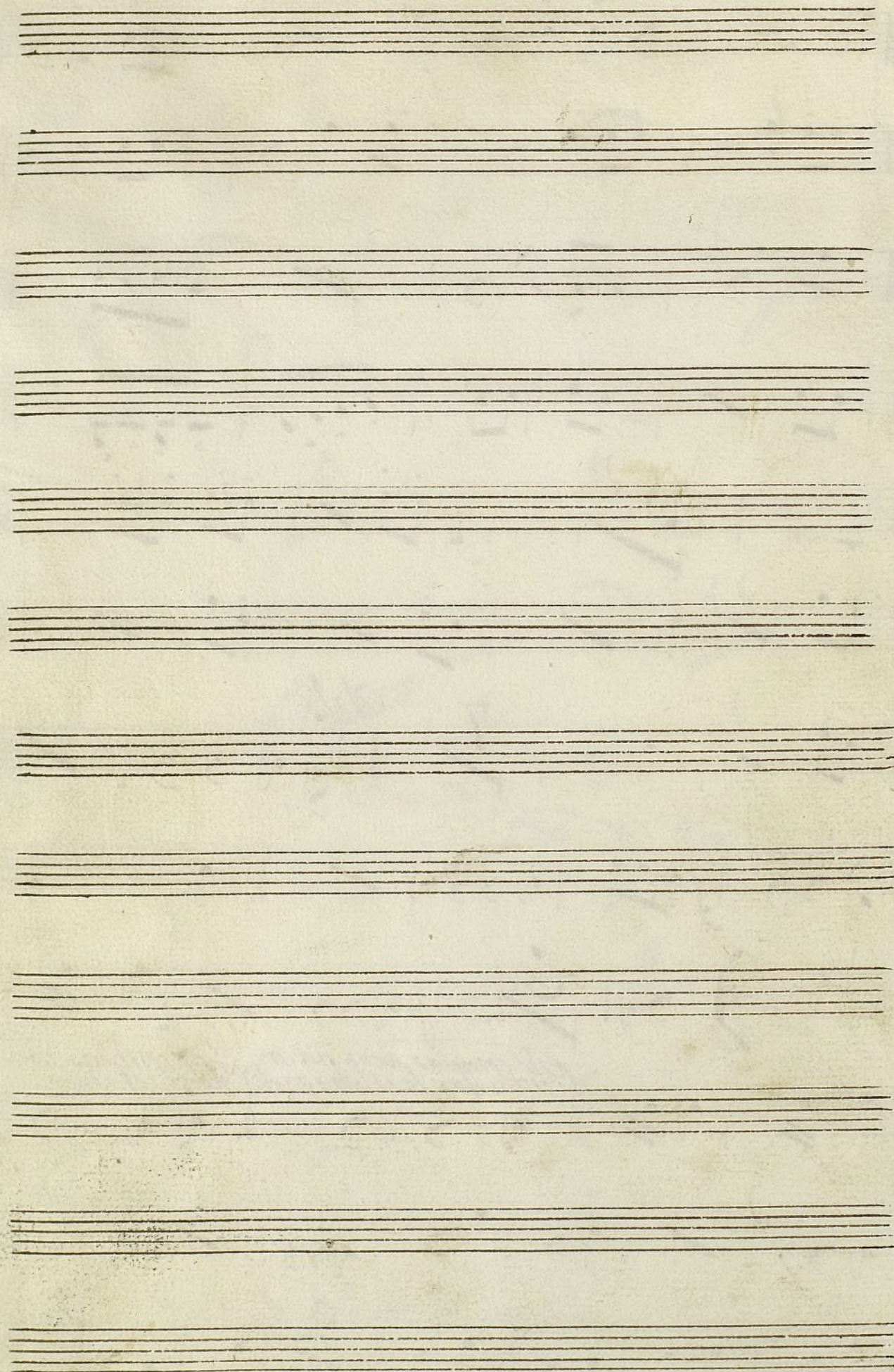
repite todo
el Vals dos
veces mas
y concluye con el
compas y dice Fin

Fin

Solo

este compas sirve para
continuar la otra parte

este compas sirve
para concluir



7

Mus 675

13.

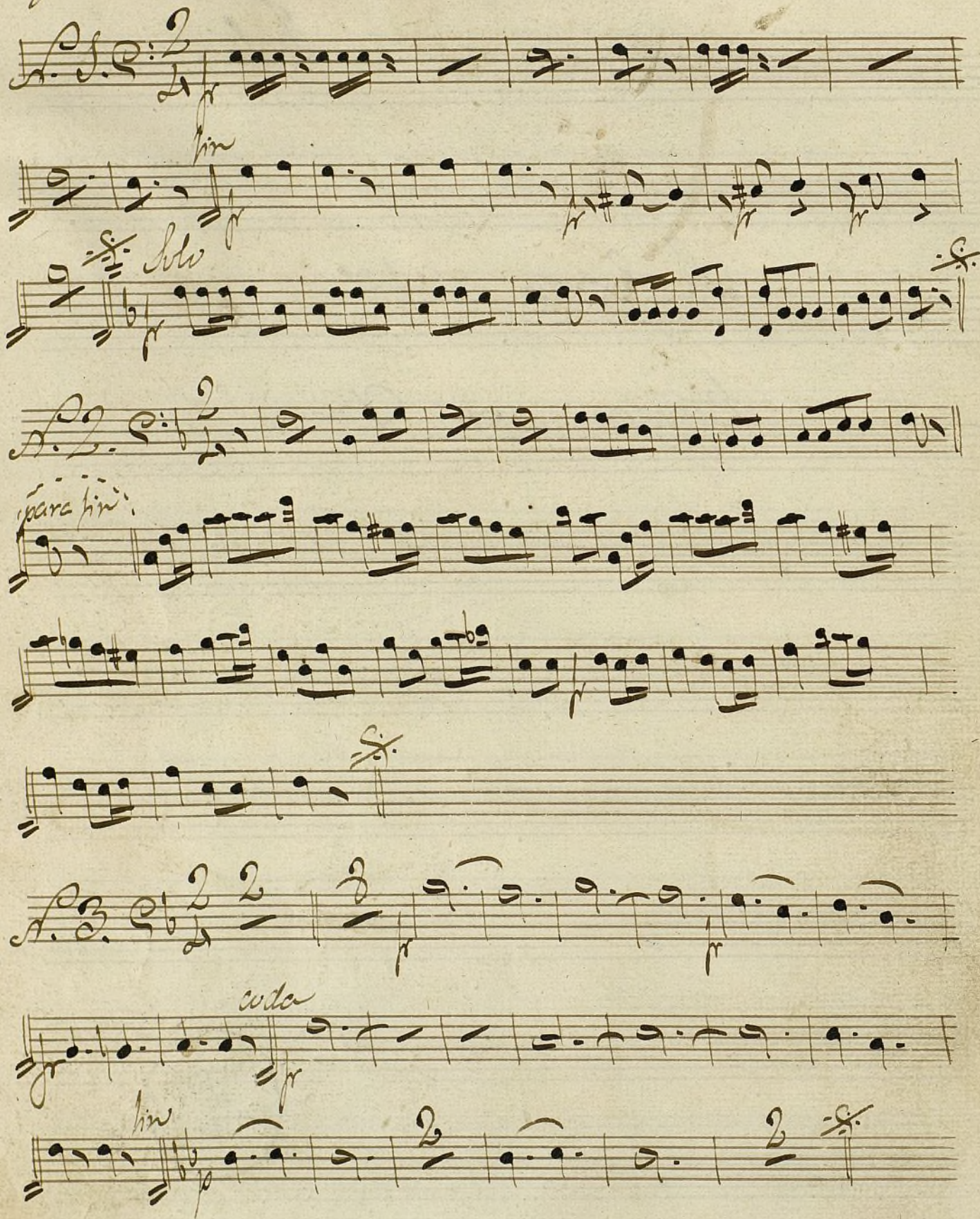
Figle.

La Guardia Mobble

Rigodoni por Bordini.

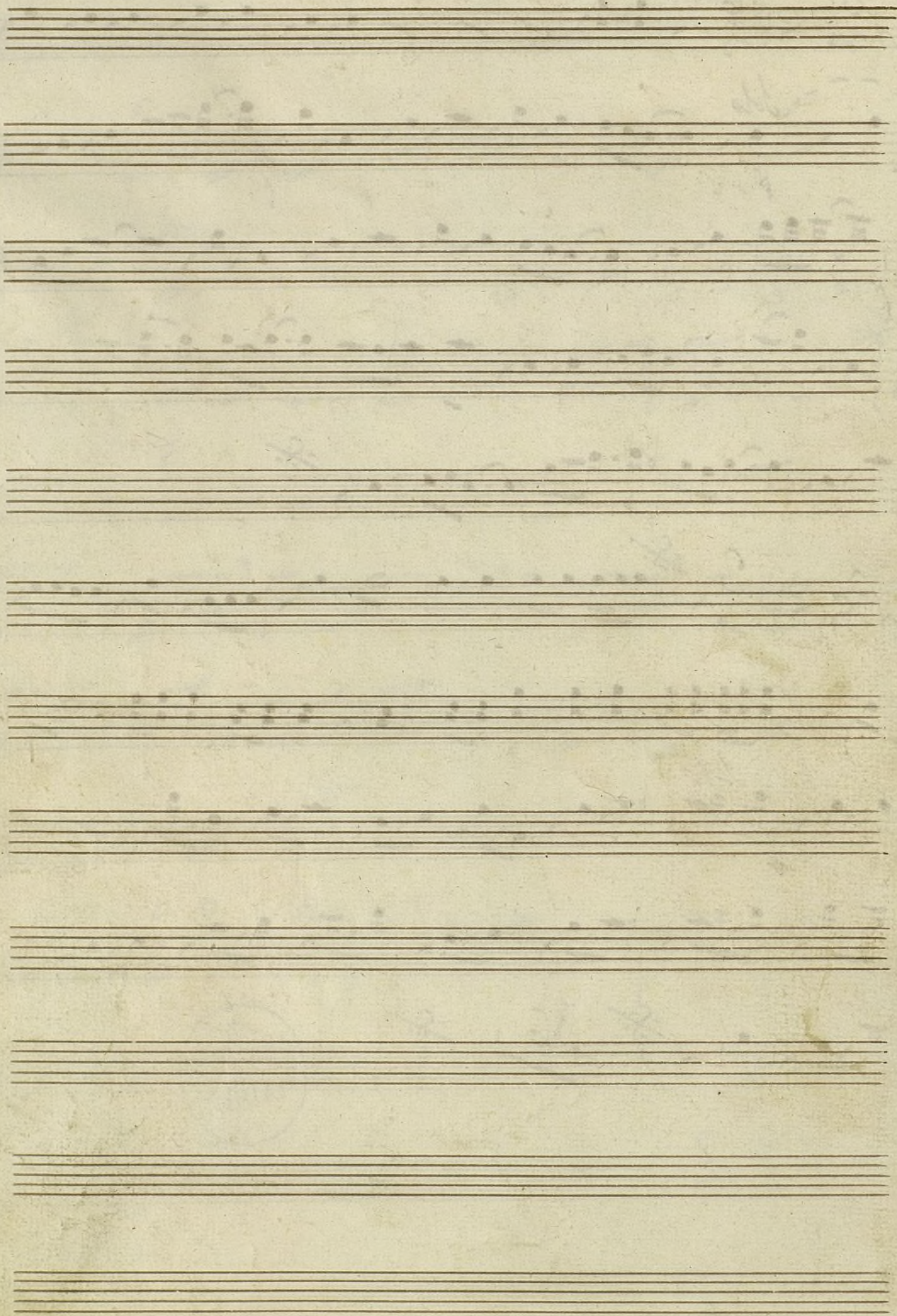


La Guardia Mobilité Rigodon Danse Fugle



Handwritten musical score on ten staves. The notation includes various musical symbols such as clefs, time signatures (6/8, 2/2), notes, rests, and dynamic markings. The word "Solo" is written above the second staff. The score concludes with a double bar line and the number "16" written above the staff. The manuscript shows signs of age, including some staining and wear along the left edge.





N.º 8

N.º 8

N.º 8

N.º 8

N.º 8

N.º 8

N.º 8

N.º 8

N.º 8

N.º 8

N.º 8

N.º 8

N.º 8

N.º 8

N.º 8

N.º 8

N.º 8

N.º 8

N.º 8

N.º 8

N.º 8

N.º 8

N.º 8

N.º 8

N.º 8

N.º 8

N.º 8

N.º 8

N.º 8

N.º 8

N.º 8

N.º 8

N.º 8

N.º 8

N.º 8

N.º 8

N.º 8

N.º 8

N.º 8

N.º 8

N.º 8

N.º 8

N.º 8

N.º 8

N.º 8

N.º 8

N.º 8

N.º 8

N.º 8

N.º 8

N.º 8

N.º 8

N.º 8

N.º 8

N.º 8

N.º 8

N.º 8

N.º 8

N.º 8

N.º 8

N.º 8

N.º 8

N.º 8

N.º 8

N.º 8

N.º 8

N.º 8

N.º 8

N.º 8

N.º 8

N.º 8

N.º 8

N.º 8

N.º 8

N.º 8

N.º 8

N.º 8

N.º 8

N.º 8

N.º 8

N.º 8

N.º 8

N.º 8

N.º 8

N.º 8

N.º 8

N.º 8

N.º 8

N.º 8

N.º 8

N.º 8

N.º 8

N.º 8

N.º 8

N.º 8

N.º 8

N.º 8

N.º 8

N.º 8

N.º 8

Figles

Mus 675

N.º 1. La Carolina

Handwritten musical score for "N.º 1. La Carolina". The score is written on ten staves. It begins with a treble clef, a key signature of one sharp (F#), and a 3/4 time signature. The tempo marking "Allegro" is written above the first staff. The score includes various musical notations such as notes, rests, and dynamic markings like "ff" (fortissimo) and "p" (piano). There are also repeat signs and a section marked "Fin." at the end of the eighth staff. The score concludes with a double bar line and a final note.

D. C. al



V. La Rabia

A handwritten musical score on aged paper, consisting of ten staves. The notation is in a historical style, featuring a treble clef, a key signature of one sharp (F#), and a 2/4 time signature. The music includes various note values (quarter, eighth, and sixteenth notes), rests, and dynamic markings such as 'ff' (fortissimo) and 'f' (forte). The score concludes with a double bar line and a final cadence. The word 'Fin' is written above the eighth staff.

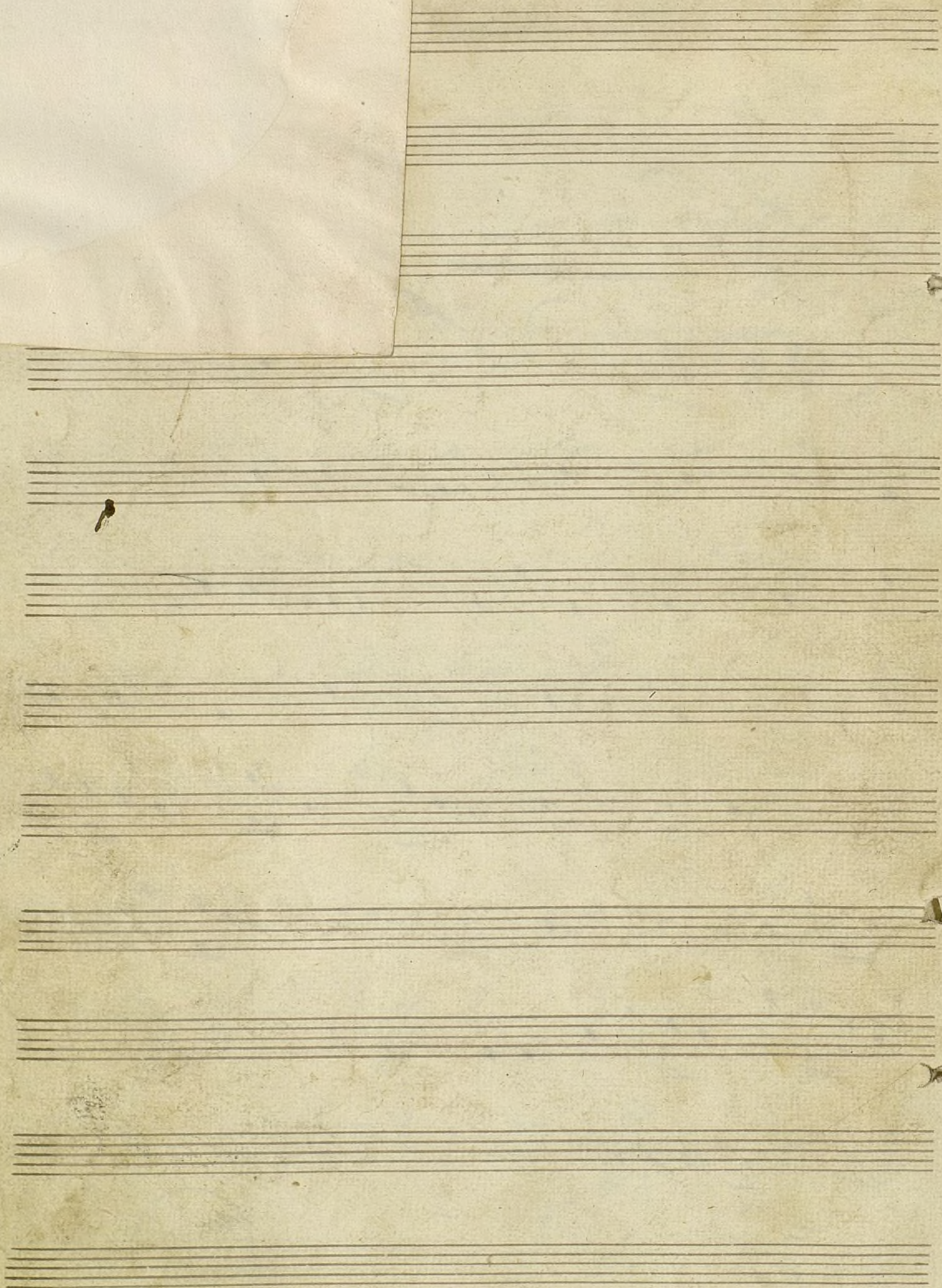
D. Cal. S.

1.º B. Luisa

Andante

Handwritten musical score for '1.º B. Luisa'. The score is written on ten staves. The first staff begins with a treble clef, a key signature of one sharp (F#), and a time signature of 3/4. The notation includes various musical symbols such as notes, rests, and bar lines. There are some corrections and markings throughout the score, including a large 'X' over a section on the seventh staff and a circled 'fa' on the eighth staff. The score concludes with a double bar line on the tenth staff.





*Sigle**O Seguiño**Cánda de Valse,**por Fran^{co} Barbieri**Luz y Pelos**Madrid**Andante*

Handwritten musical score on ten staves. The notation includes various musical symbols such as notes, rests, and dynamic markings. The score is written in a historical style, likely from the 18th or 19th century.

Key markings and annotations include:

- 1^a* and *2^a* (first and second endings) above the third staff.
- Para concluir* (To conclude) above the third staff.
- crec.* (crescendo) below the fourth staff.
- mi* (mi) above the eighth staff.
- crec.* (crescendo) below the ninth staff.
- A large number *26* written below the tenth staff.

The score concludes with a double bar line and a repeat sign at the end of the tenth staff.

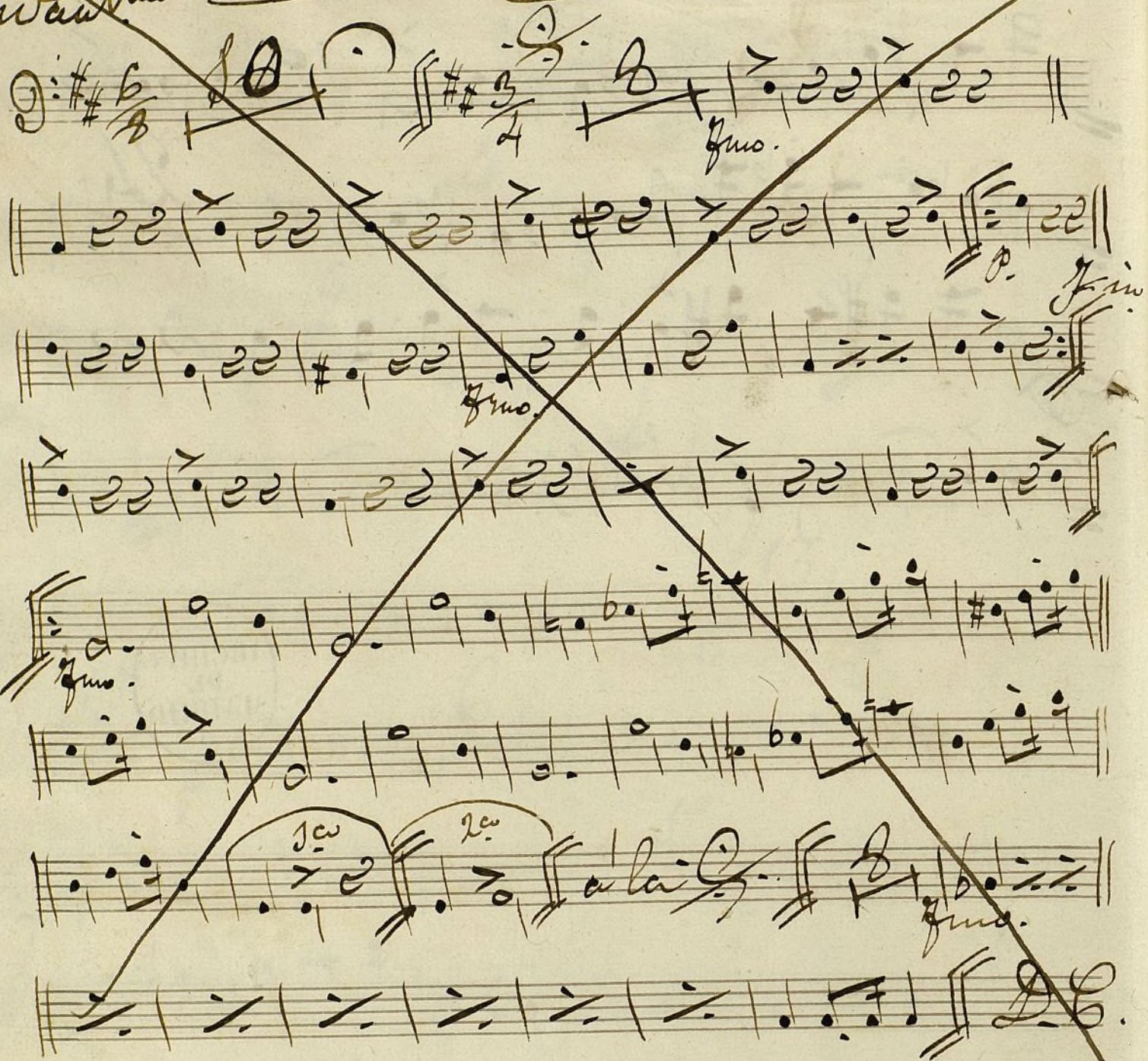


A handwritten musical score for guitar, consisting of ten staves. The notation includes various musical symbols such as clefs (treble and bass), key signatures (one sharp and one flat), time signatures (3/4, 4/4, 2/4), and dynamic markings like 'ff' (fortissimo) and 'Solo'. The score is divided into sections by repeat signs and includes a 'Coda' section. The handwriting is in dark ink on aged paper. The first staff begins with a treble clef and a key signature of one sharp (F#). The second staff has a bass clef and a key signature of one flat (Bb). The third staff has a bass clef and a key signature of one flat (Bb). The fourth staff has a bass clef and a key signature of one flat (Bb). The fifth staff has a bass clef and a key signature of one flat (Bb). The sixth staff has a bass clef and a key signature of one flat (Bb). The seventh staff has a bass clef and a key signature of one flat (Bb). The eighth staff has a bass clef and a key signature of one flat (Bb). The ninth staff has a bass clef and a key signature of one flat (Bb). The tenth staff has a bass clef and a key signature of one flat (Bb). The score includes various musical notations such as notes, rests, and accidentals. There are also some markings that look like '16', '4', '2', '13', '15', and '6' which might be measure numbers or section markers. The word 'Coda' is written in a large, stylized font on the fourth staff. The word 'Solo' is written above the sixth staff. The word 'ff' is written below the fourth staff. The word 'ff' is written below the fifth staff. The word 'ff' is written below the sixth staff. The word 'ff' is written below the seventh staff. The word 'ff' is written below the eighth staff. The word 'ff' is written below the ninth staff. The word 'ff' is written below the tenth staff. The score ends with a double bar line and a repeat sign.

Handwritten musical notation on four staves. The notation includes various notes, rests, and accidentals. The first staff begins with a treble clef and a key signature of one flat. The second staff ends with a double bar line and the number '24' written above it. The third staff begins with a treble clef and a key signature of one sharp. The fourth staff begins with a treble clef and a key signature of one flat.

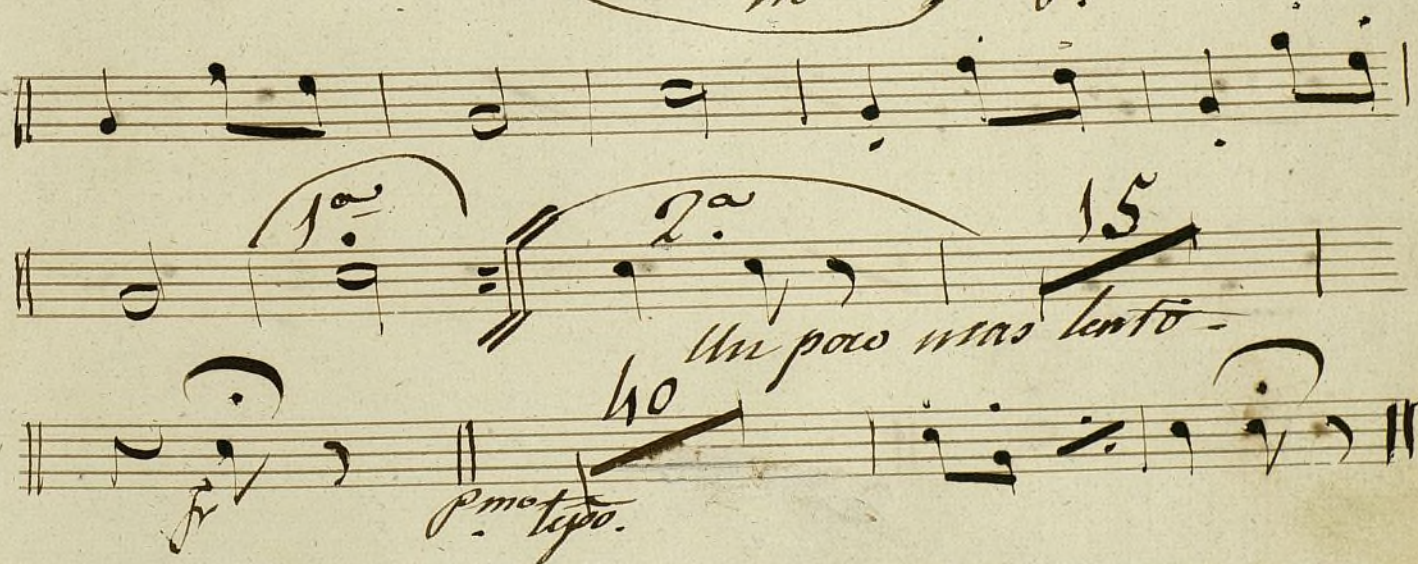
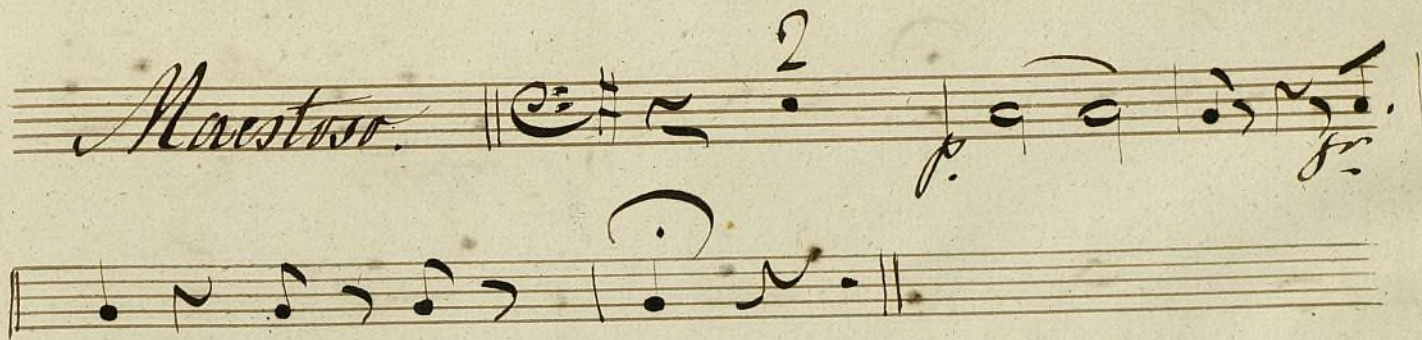


~~Andante~~ Luzca Polca Andine



Padedu.

Mus 675



38

Un poco mas lento.

piu mosso

finito

And.^{te} $\frac{3}{4}$ $\frac{2}{4}$

All.^{to} & tempo de Falto $\frac{3}{4}$ 52



V.S.



11

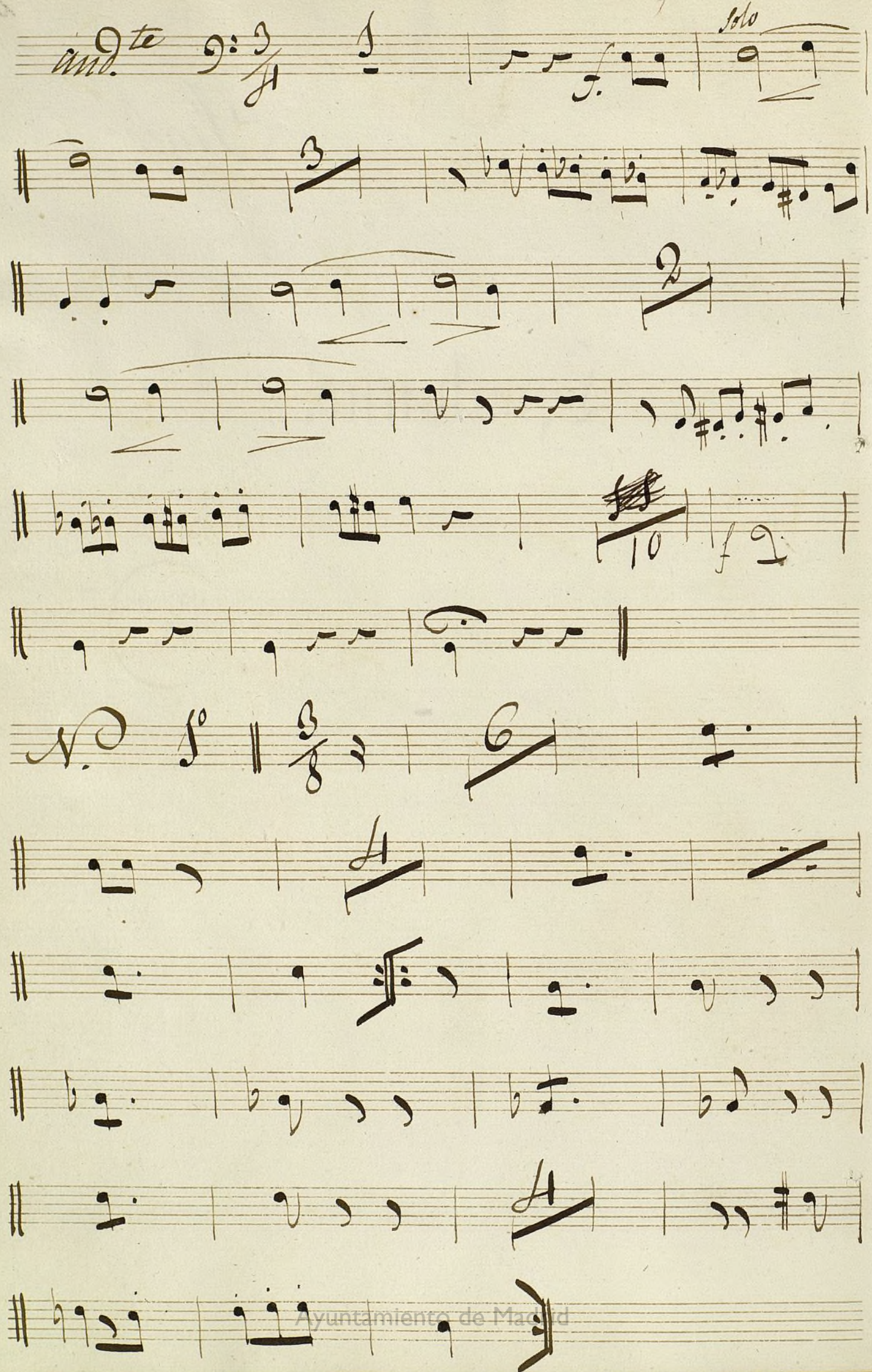
Mus 675

21

Fugle

L, autunno.





Musical staff with notes, a double bar line, a 3/8 time signature, a 16-measure rest, and a repeat sign.

Musical staff with eighth notes, a double bar line, a 2-measure rest, and a repeat sign.

Musical staff with eighth notes, a double bar line, a 4-measure rest, and a repeat sign.

Musical staff with eighth notes, a double bar line, a 1-measure rest, and a repeat sign.

Musical staff with eighth notes, a double bar line, a 1-measure rest, and a repeat sign.



Musical staff with notes, a double bar line, a 3/8 time signature, a 16-measure rest, and a repeat sign.

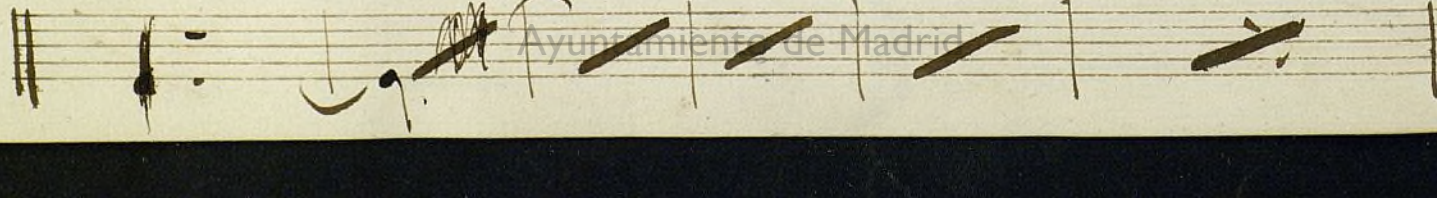
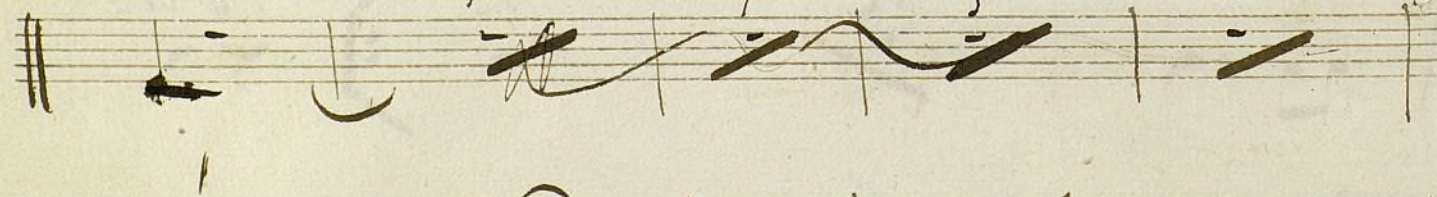
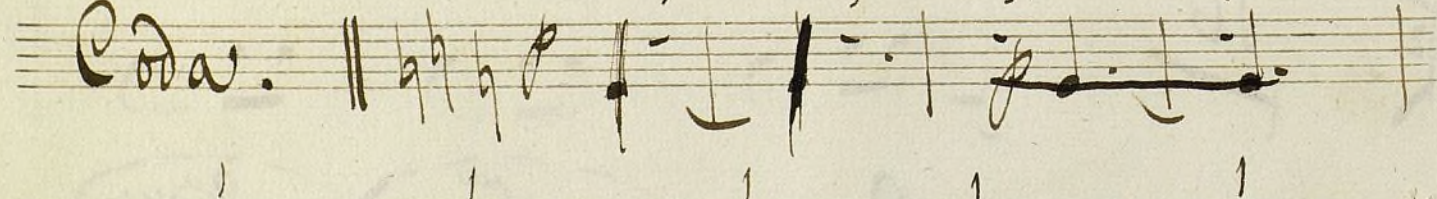
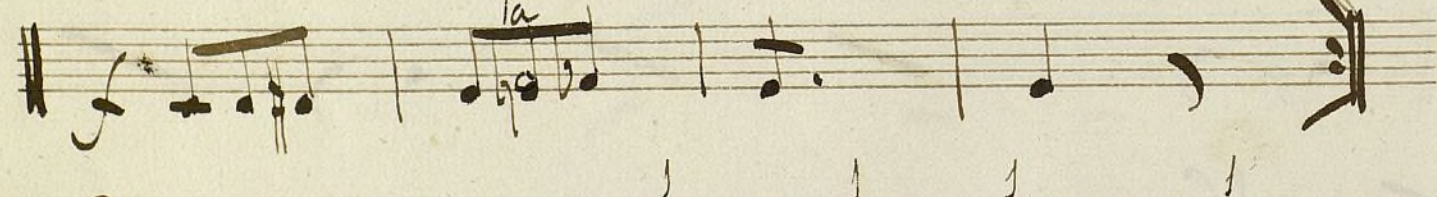
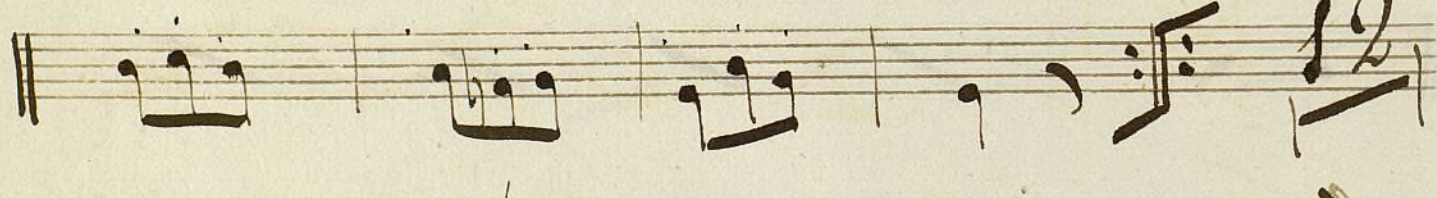
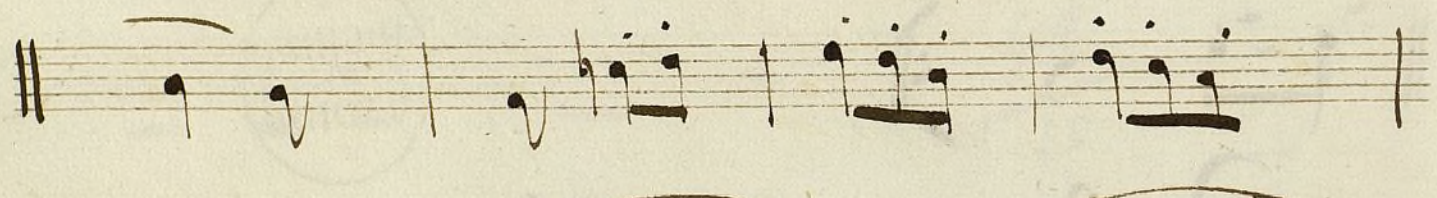
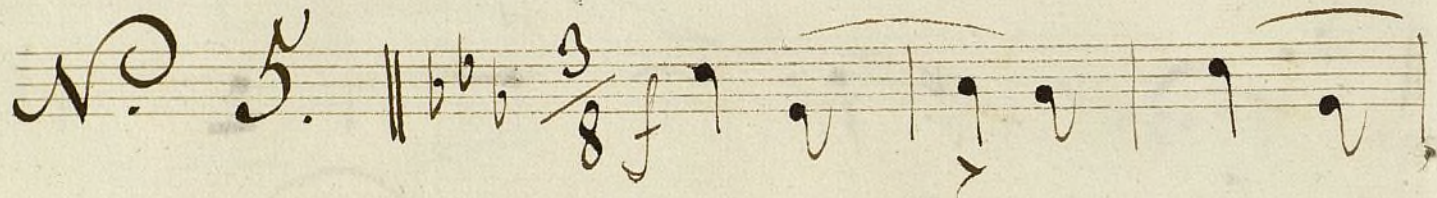
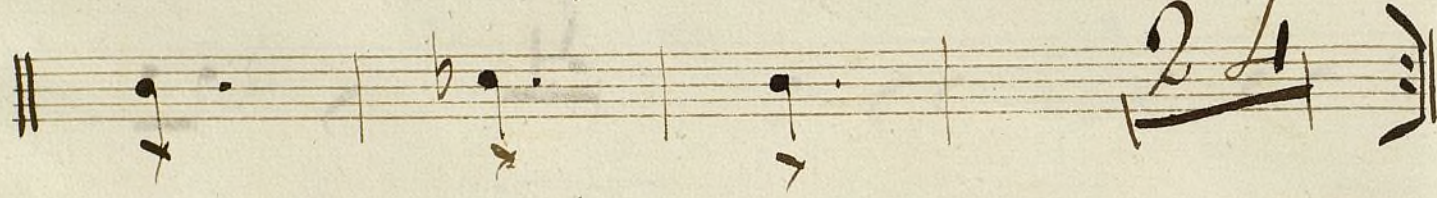
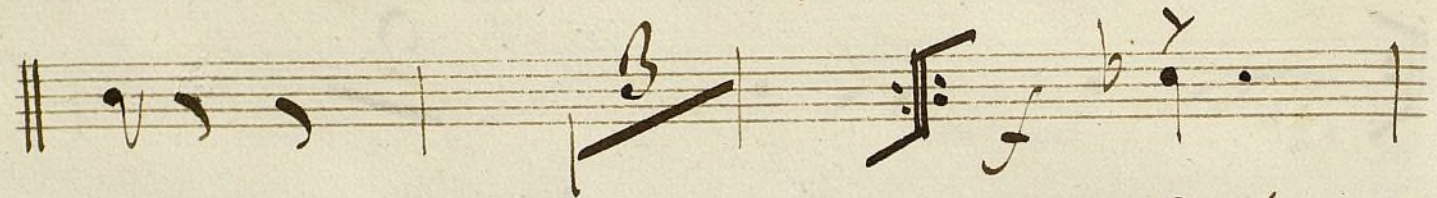
Musical staff with eighth notes, a double bar line, a 1-measure rest, and a repeat sign.

Musical staff with eighth notes, a double bar line, a 1-measure rest, and a repeat sign.

Musical staff with eighth notes, a double bar line, a 1-measure rest, and a repeat sign.

Musical staff with notes, a double bar line, a 16-measure rest, and a repeat sign.

Musical staff with notes, a double bar line, a 3-measure rest, and a repeat sign.



Handwritten musical notation on a five-line staff, featuring various note values and rests.

Handwritten musical notation on a five-line staff, featuring various note values and rests.

Handwritten musical notation on a five-line staff, featuring various note values and rests.

Handwritten musical notation on a five-line staff, featuring various note values and rests.



Handwritten musical notation on a five-line staff, featuring various note values and rests.

Handwritten musical notation on a five-line staff, featuring various note values and rests.

Handwritten musical notation on a five-line staff, featuring various note values and rests.

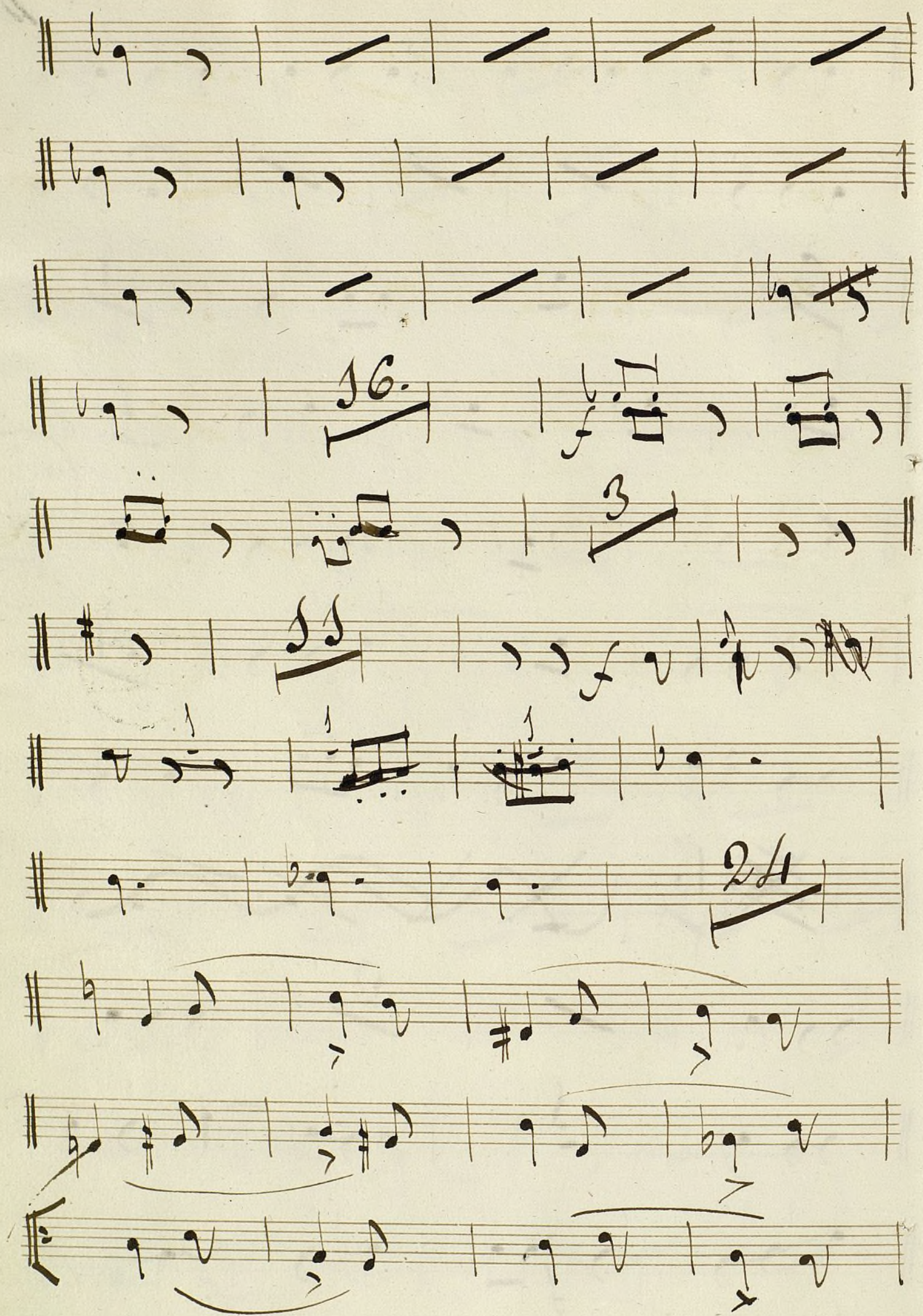
Handwritten musical notation on a five-line staff, featuring various note values and rests.

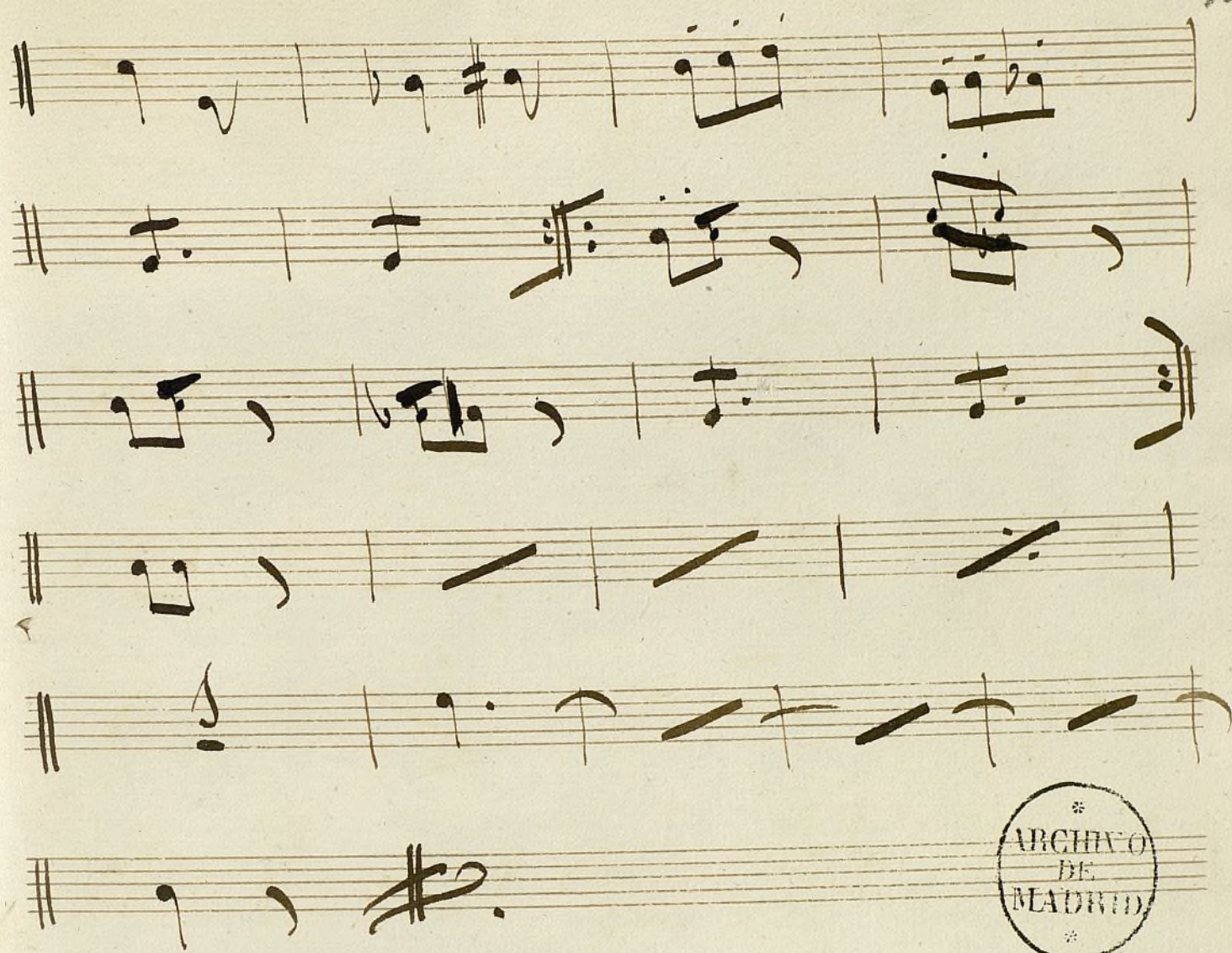
Handwritten musical notation on a five-line staff, featuring various note values and rests.

Handwritten musical notation on a five-line staff, featuring various note values and rests.

Handwritten musical notation on a five-line staff, featuring various note values and rests.

Handwritten musical notation on a five-line staff, featuring various note values and rests.






12.

Maria di Prohan (Sinfonia) Figle.

all.^o

A single staff of handwritten musical notation. The notation includes a double bar line at the beginning, followed by a series of notes and rests. The notes are written in a cursive, handwritten style. The staff is a single line with a clef-like symbol at the beginning. The notation is somewhat complex, with many beamed notes and rests. The handwriting is in dark ink on aged, slightly yellowed paper.

Large to $\frac{3}{4}$ 38 

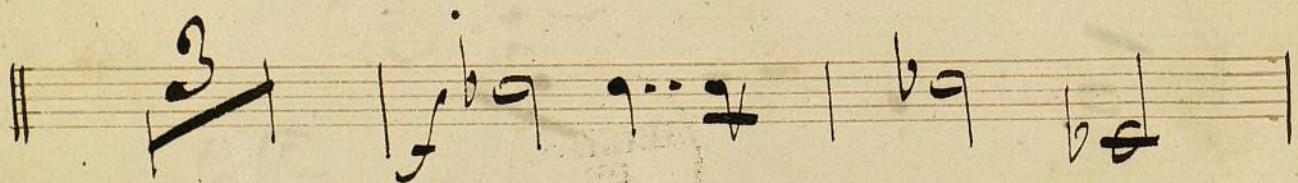
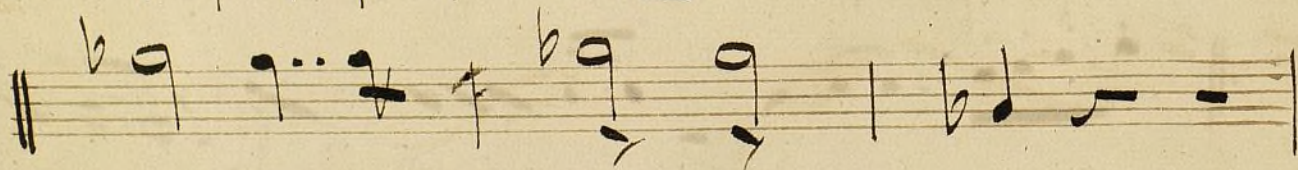
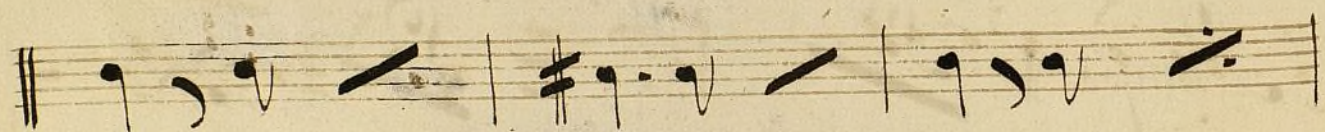
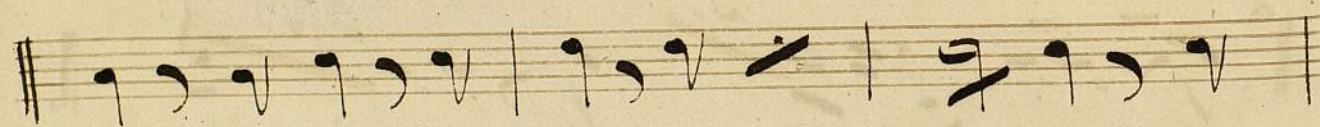
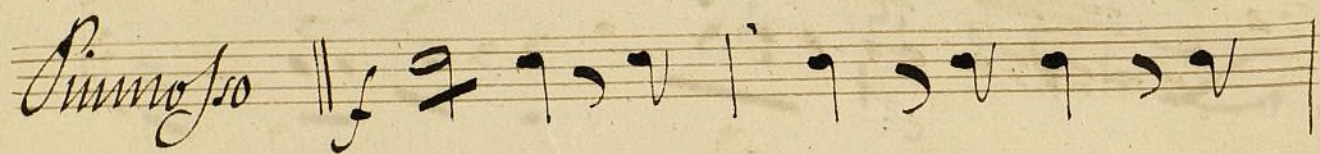
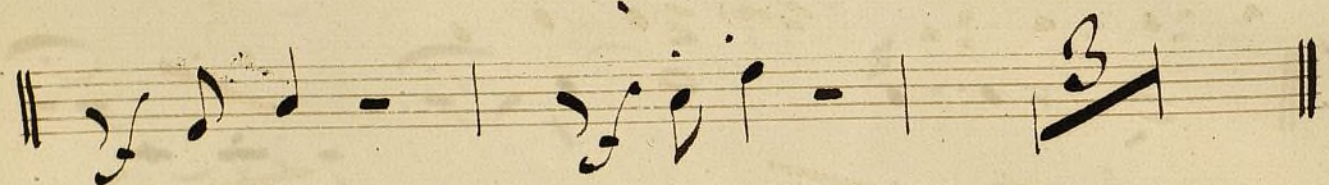
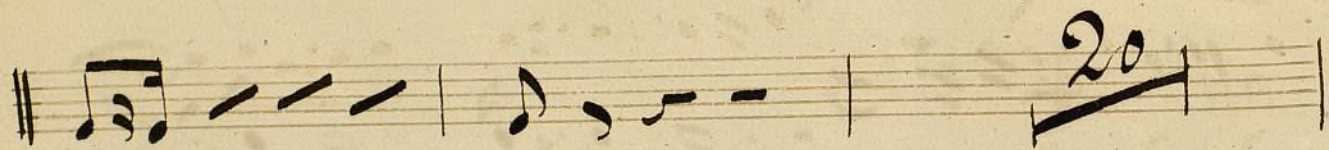
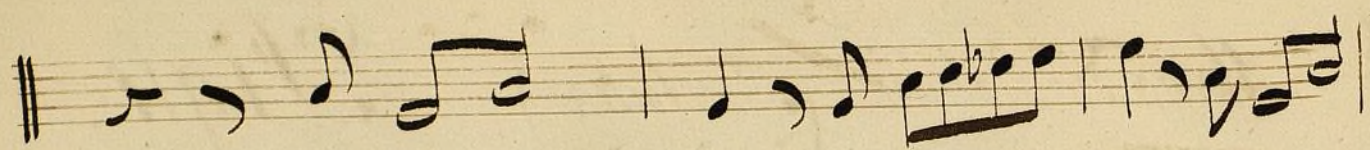
[illegible]

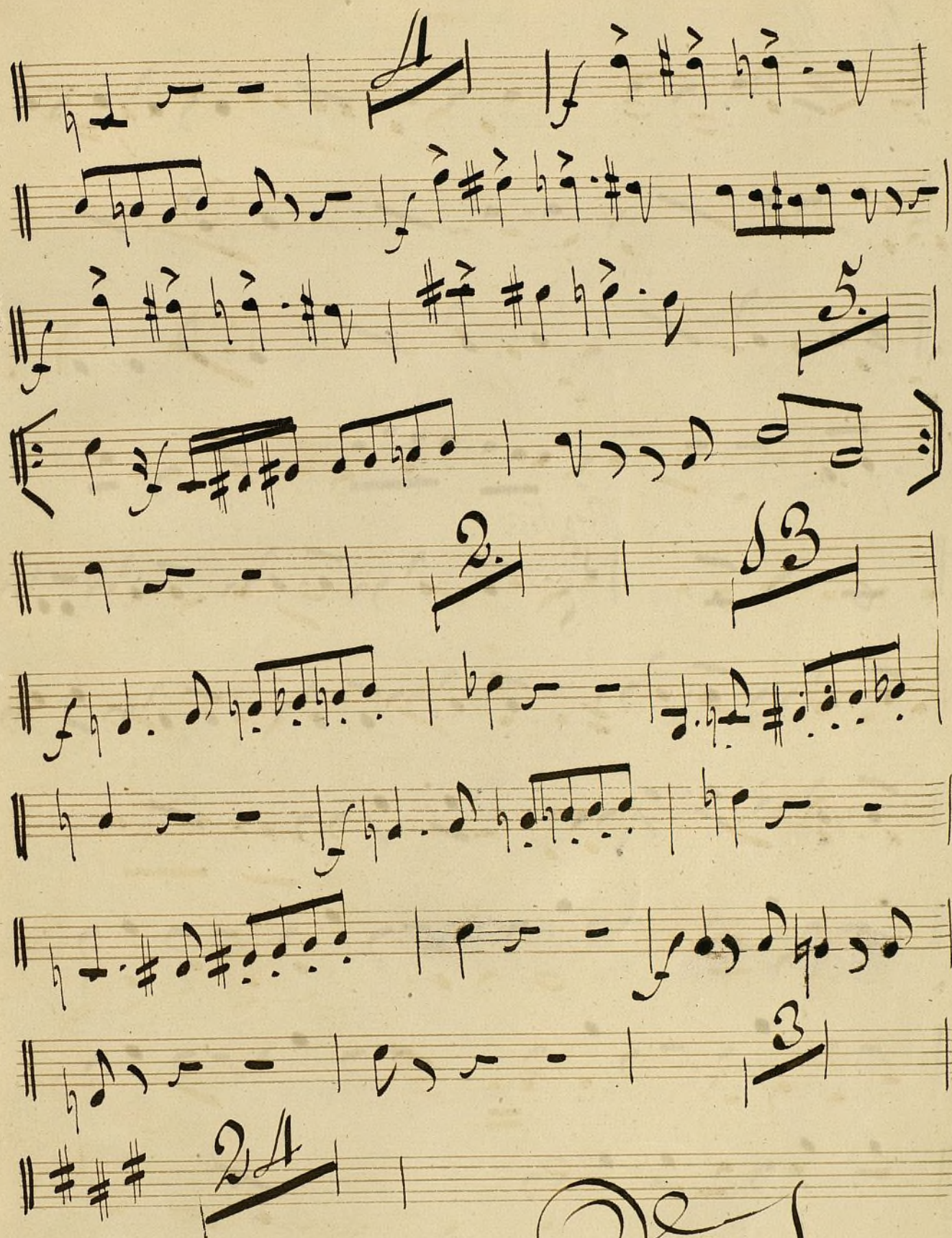
1^o tempo || 13. *all.^o* 12

A single staff of handwritten musical notation. It begins with a double bar line, followed by a whole rest. Then, there is a series of eighth notes: G4, A4, B4, C5, D5, E5, F5, G5. This is followed by a quarter rest, then a half note G4, and another quarter rest. The next measure contains a half note G4, followed by a series of eighth notes: A4, B4, C5, D5, E5, F5, G5. The piece concludes with a final measure containing a half note G4, followed by a series of eighth notes: A4, B4, C5, D5, E5, F5, G5, and ends with a double bar line.

A single staff of handwritten musical notation. The notation includes a double bar line at the beginning, followed by a series of notes and rests. The notes are written in a cursive, handwritten style. There are several measures separated by vertical bar lines. The notation is somewhat complex, with various note values and rests. The paper is aged and yellowed.







Poco Più

Poco Più

12/8

