

Cap.<sup>o</sup> XX n<sup>o</sup> 19

4<sup>a</sup> Leg.<sup>o</sup> 3.<sup>o</sup> n<sup>o</sup> 40.

Com.<sup>a</sup>

el Barbaro Focalonita

De Llerma.







Handwritten musical score on aged paper. The score consists of several staves with musical notation and lyrics in Spanish. The lyrics are: "Lleno de vic", "a su Reino venturoso", "a su Reino venturoso venturoso Lleno de vic torias", "torias tan tas", and "Lleno de Victorias tantas." The paper shows signs of age, including discoloration and some staining.

Lleno de vic

a su Reino venturoso

a su Reino venturoso venturoso Lleno de vic torias

torias tan tas

Lleno de Victorias tantas.



*Pastorela.*

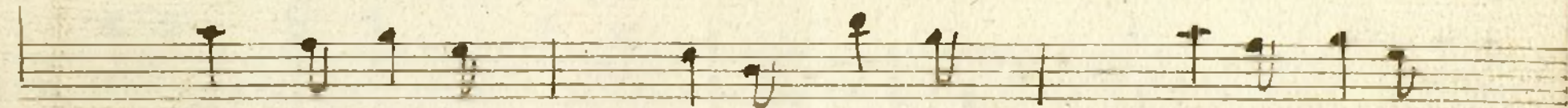
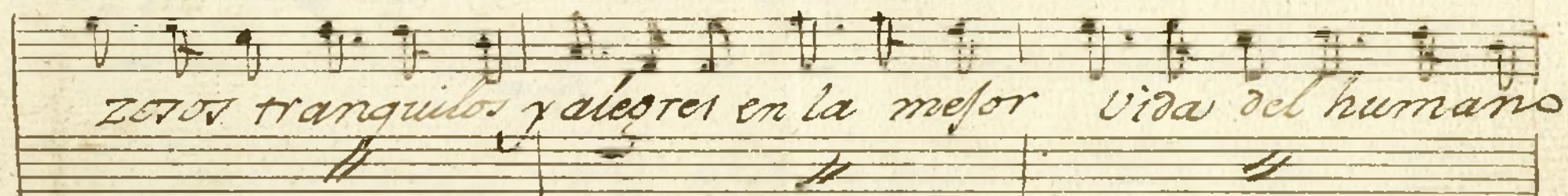
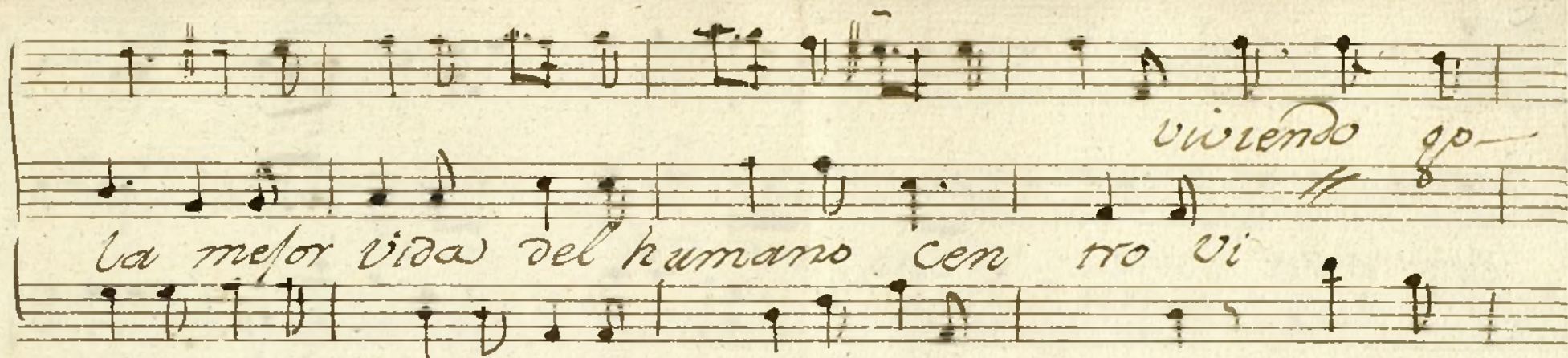
Handwritten musical score for a piece titled "Pastorela". The score is written on ten staves. The first two staves are for a vocal melody in G major (one sharp) and 6/8 time. The third staff is a basso continuo line with figured bass notation. The lyrics are written in Spanish and are distributed across the staves. The lyrics are: "Senci vos Pastores seguid buentro em- pleo vieniendo gozosos tranqui los y alegres en". The score includes various musical notations such as notes, rests, and bar lines. There are also some handwritten markings like "P." and "cres.".

*P.* *cres.* *le*

*Senci vos Pastores seguid buentro em-*

*pleo vieniendo gozosos tranqui los y alegres en*







centro del humano, cen tro del

This block contains the first system of a handwritten musical score. It features a single melodic line on a five-line staff. The notation includes various note values, rests, and bar lines. The lyrics "centro del humano, cen tro del" are written in cursive below the staff.

This block shows two empty musical staves, each consisting of five horizontal lines, with no notation present.

This block shows a single staff of music with handwritten notation, including several vertical strokes and some note heads.

2a. y 2a.  
Al.<sup>o</sup>

El Grande e

This block contains a multi-measure rest section of the musical score. It consists of five staves. The first staff has the handwritten text "2a. y 2a." and "Al.<sup>o</sup>" written above it. The subsequent staves show a series of vertical bar lines, indicating a rest for a specific duration. The notation "El Grande e" is written at the end of the section.



4

*rodes Monarca de Judea a los tres Reyes*

*del oriente fiel y atento finos obre*

*del finos*



quios ofrece

obsequios ofrece finos finos finos obsequios o

fre ce.

The image shows a handwritten musical score on aged, slightly stained paper. It consists of two systems of staves. The first system has two staves with lyrics written below the notes. The second system also has two staves, with the first staff containing the lyrics 'fre' and 'ce.' under specific notes. The handwriting is in a cursive style, and the paper shows signs of age and wear.



*And. no*

*Ai ai ay pobre Inocencia q. a mano*

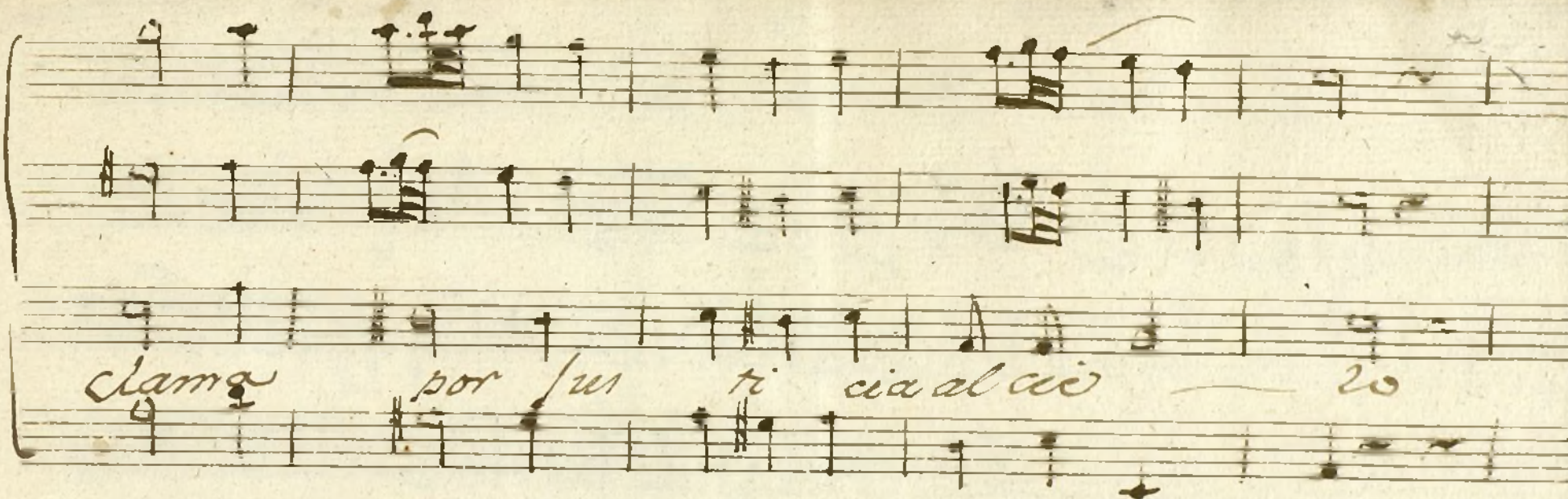


Handwritten musical score on aged paper, featuring two systems of staves. The lyrics are in Spanish and are written in a cursive hand. The first system includes the lyrics "oy derramando la sangre" and "del rigor fiero". The second system includes the lyrics "clama" and "clama clama por su ricia al cie lo". The music is written in a single melodic line on a five-line staff, with various note values and rests. The paper shows signs of age, including discoloration and wear at the edges.

oy derramando la sangre  
del rigor fiero

clama  
clama clama por su ricia al cie lo





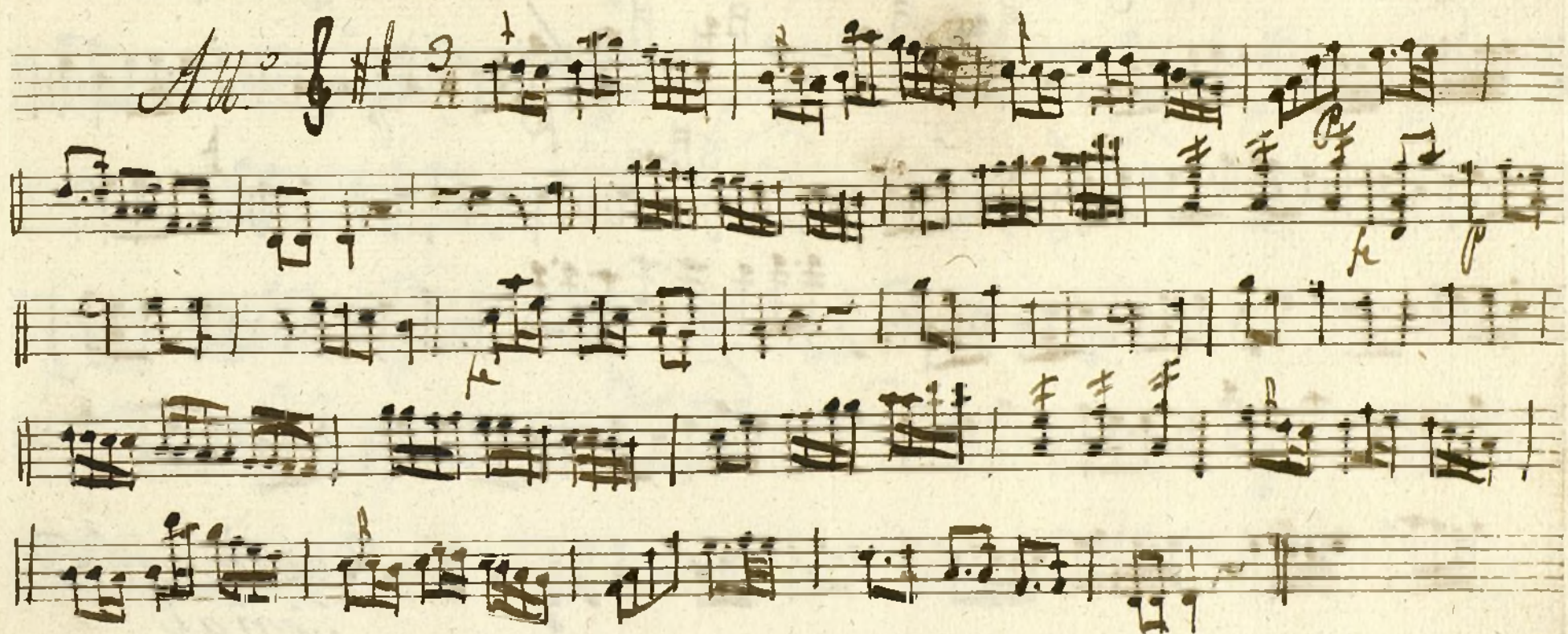


Ayuntamiento de Madrid



Violin 1.º Com.ª el Barbaro Escalona

Mus 6-4



1200005117

Ayuntamiento de Madrid



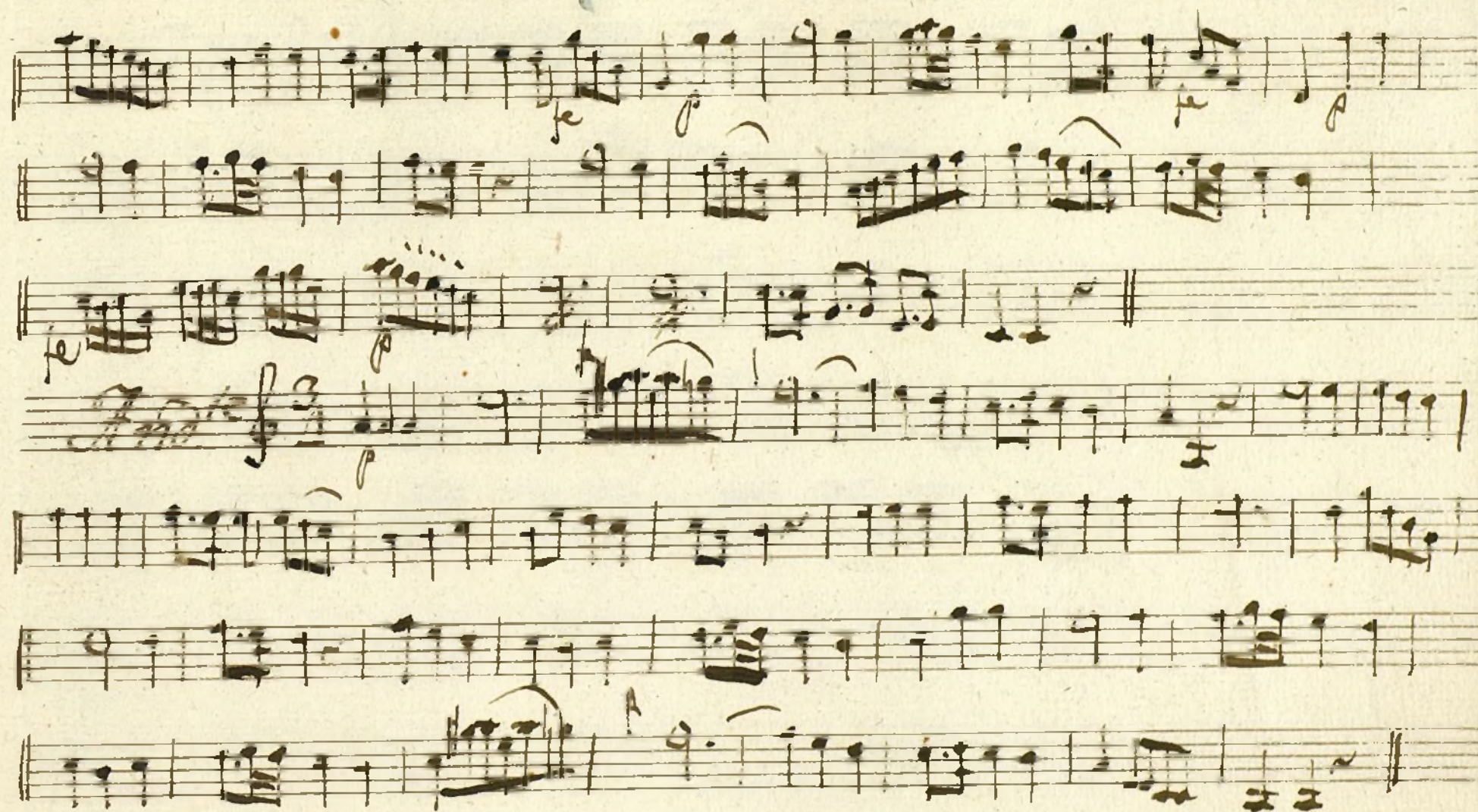
*Pastoral.* *p.º y cra.*

*Repiés ala  
Señal*

*2.ª Tornado*

*All.º*





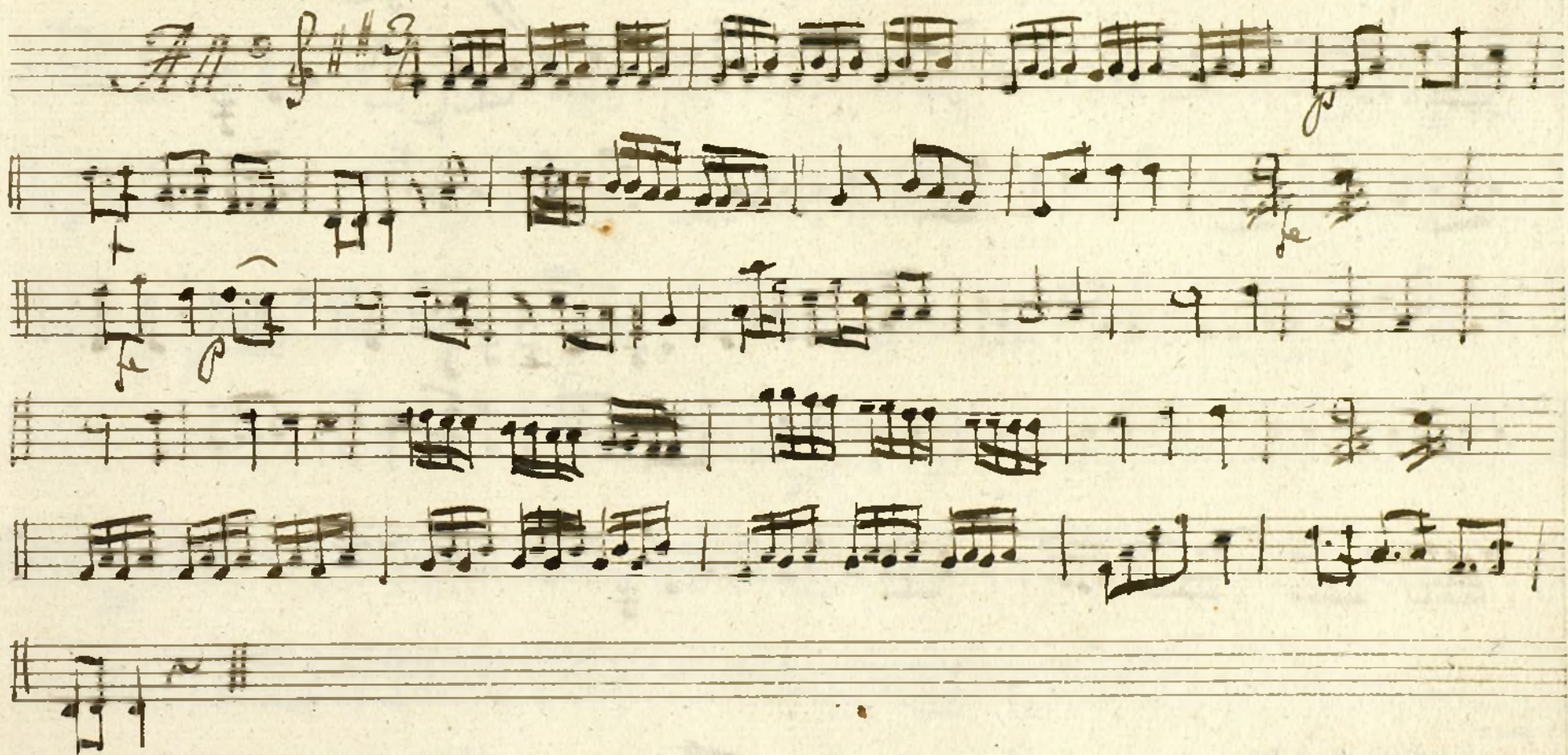


Ayuntamiento de Madrid



Violon 2.<sup>o</sup> Com.<sup>a</sup> de Barbara Academia

Mus





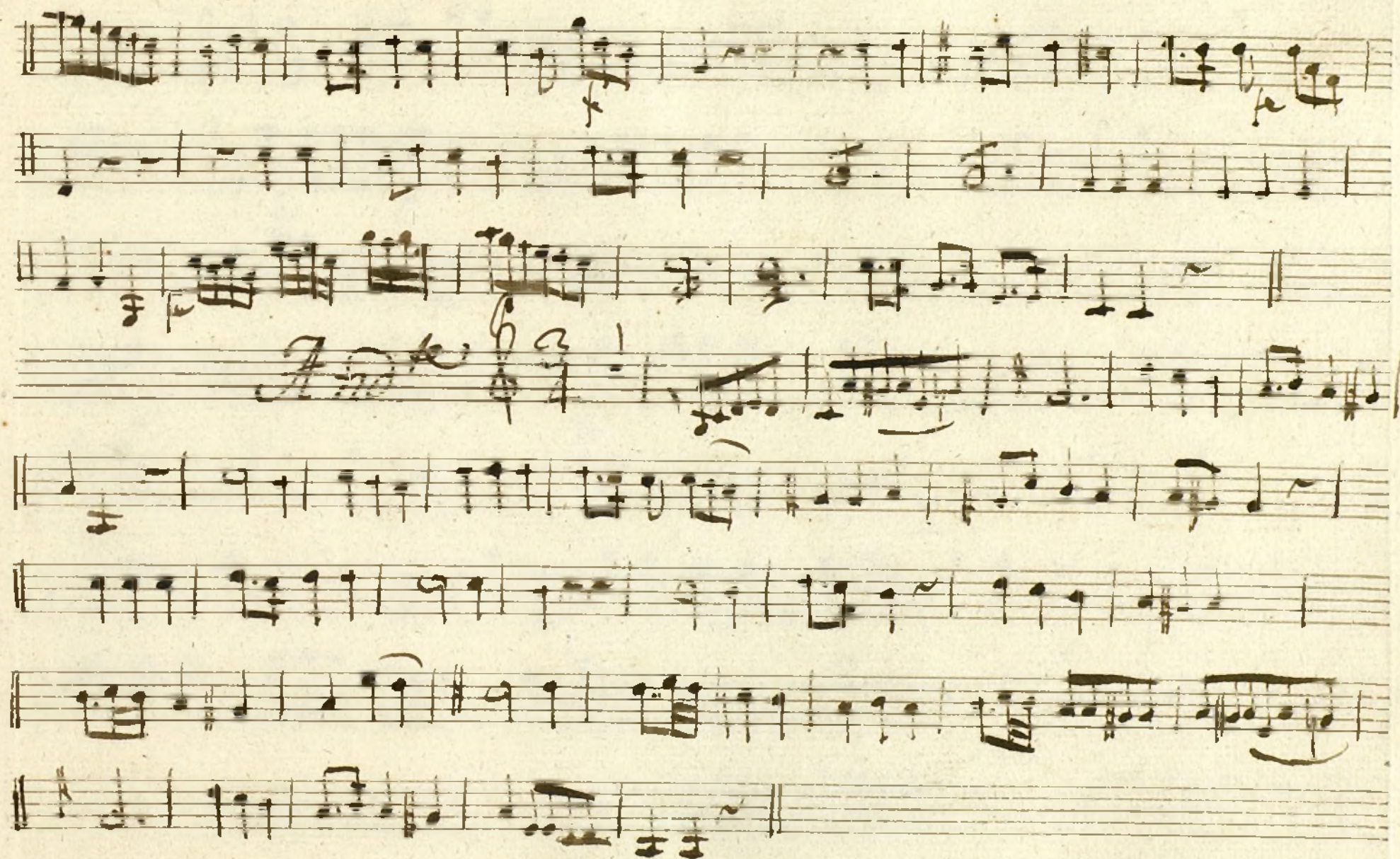
*Pantorela*  $\text{p} \text{ y } \text{Cres.}$

Handwritten musical score for 'Pantorela' in 6/8 time, marked *p* and *Cres.*. The score consists of six staves. The first staff begins with a treble clef, a key signature of one sharp (F#), and a 6/8 time signature. The music is written in a cursive, handwritten style. The sixth staff ends with the instruction *Repite a la señal*.

*2ª Tornado* *Al.*

Handwritten musical score for '2ª Tornado' in 3/4 time, marked *Al.*. The score consists of two staves. The first staff begins with a treble clef, a key signature of one sharp (F#), and a 3/4 time signature. The music is written in a cursive, handwritten style.



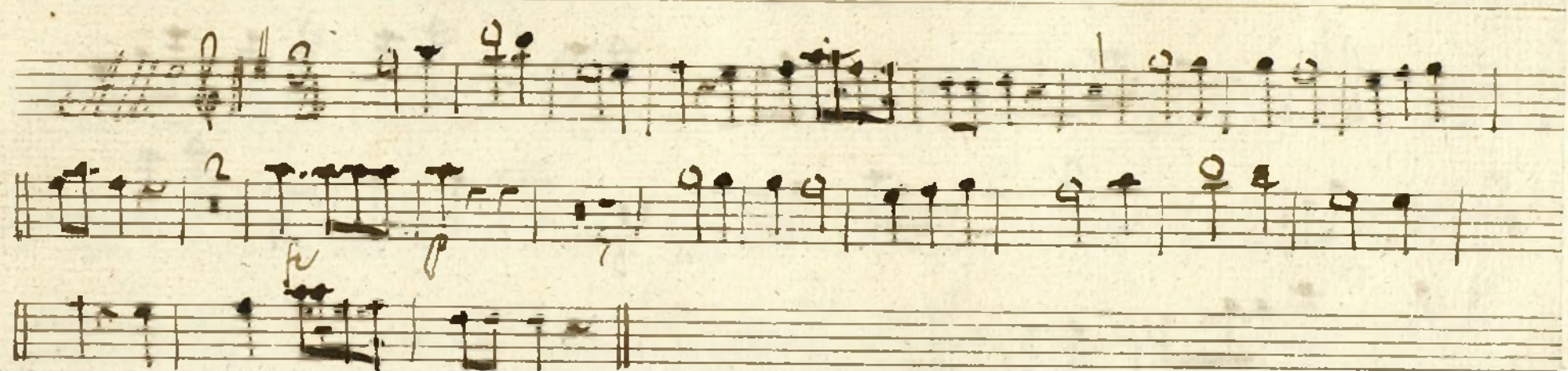




Ayuntamiento de Madrid



*Ave 1<sup>o</sup> Con<sup>a</sup> el Barbero Ascalonita*



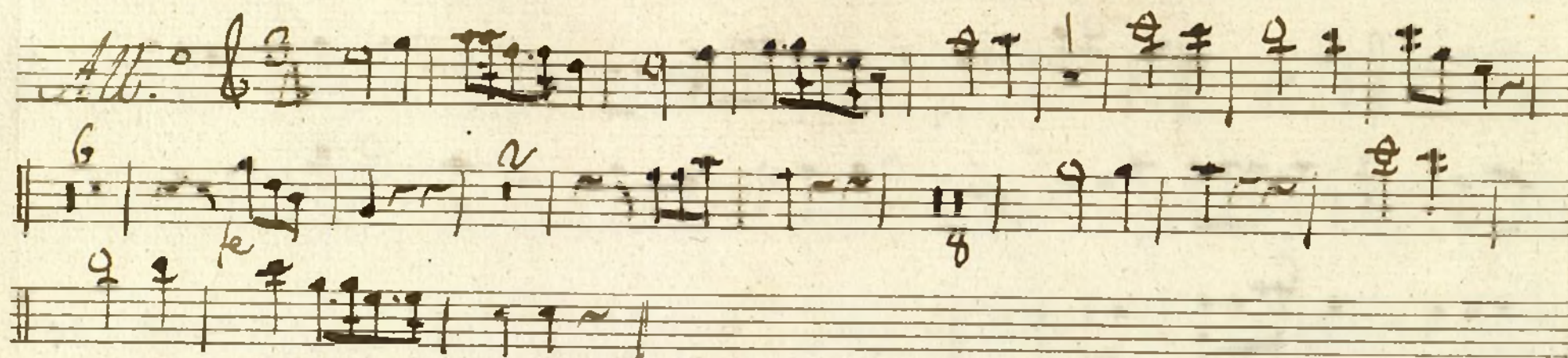
*Pastoral*



*Repite ala Señal*

*Sigue 2<sup>a</sup> Tornada.*





*Fine* *Chordas*



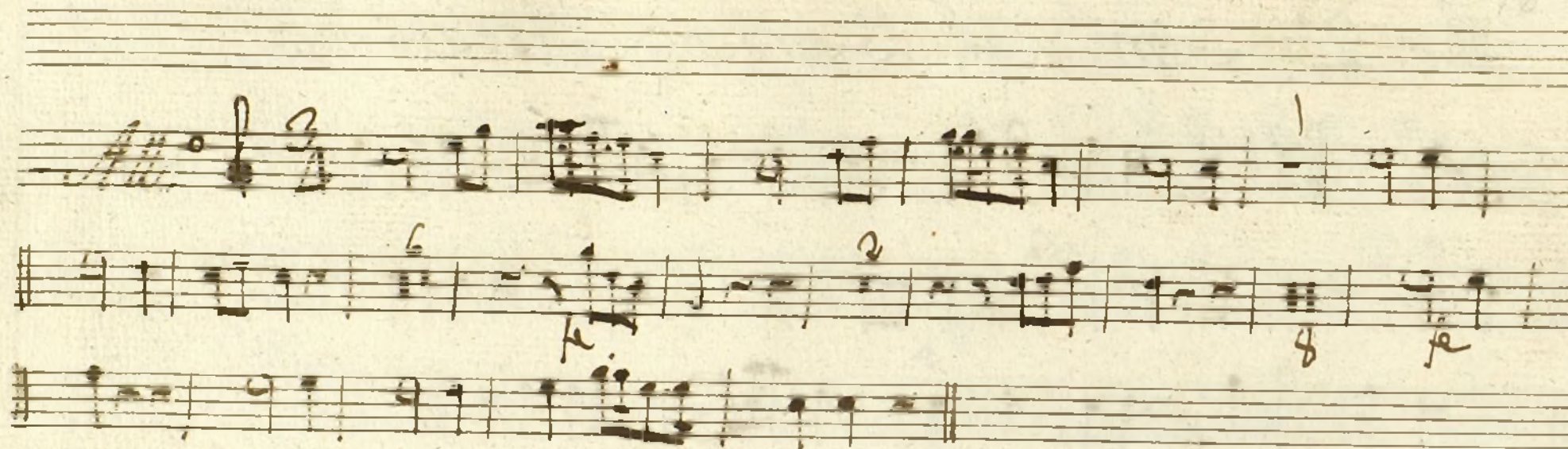
Oboe 2<sup>o</sup> Com.<sup>a</sup> el Barbaresco Ascalonita

Handwritten musical score for Oboe 2. The first section, 'Allegro', is in 3/4 time with a key signature of one sharp (F#). It consists of three staves of music. The second section, 'Pastorale', is in 6/8 time with a key signature of one sharp (F#). It consists of four staves of music. The notation includes various musical symbols such as notes, rests, and dynamic markings.

Segue al Segno

Segue 2.<sup>a</sup> Tornaada.

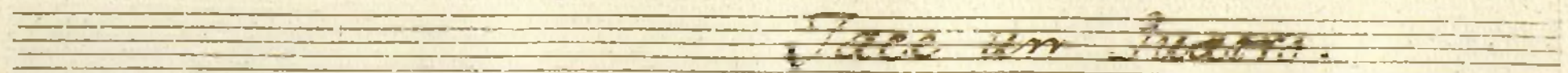
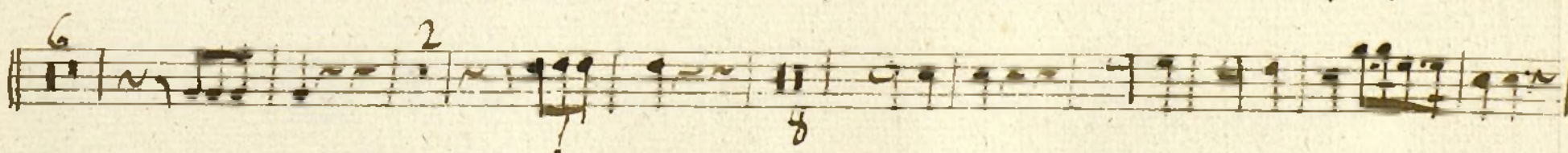
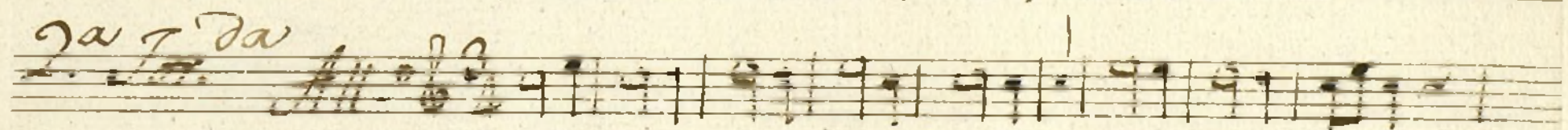
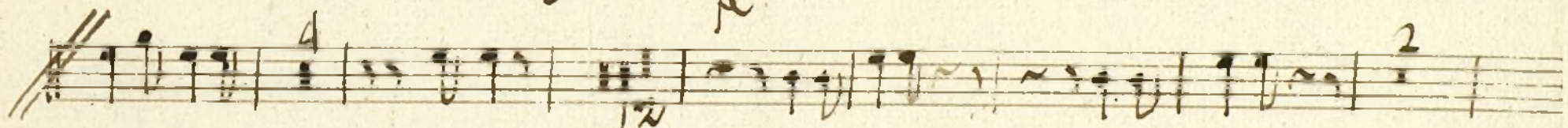
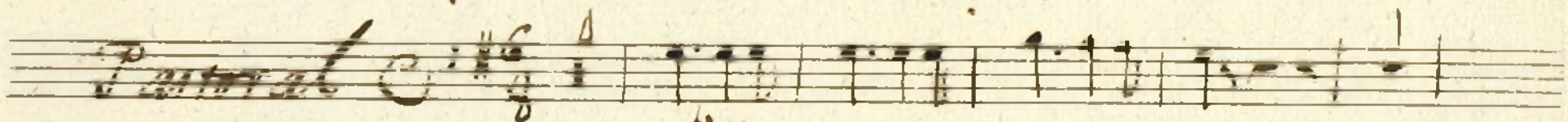
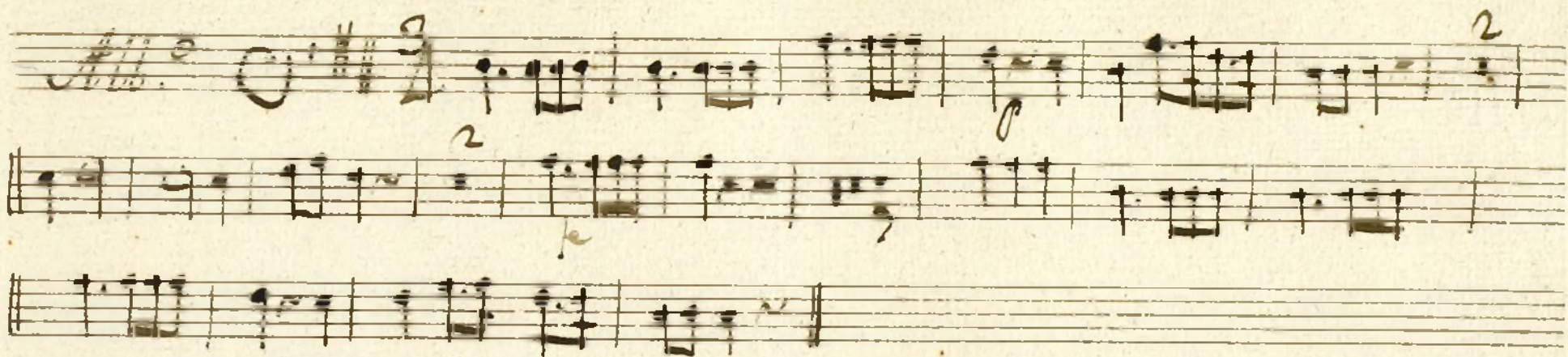




*Tace.*



*Trompa 1.<sup>a</sup> Con<sup>to</sup> el Barbaresco Accalorata?*

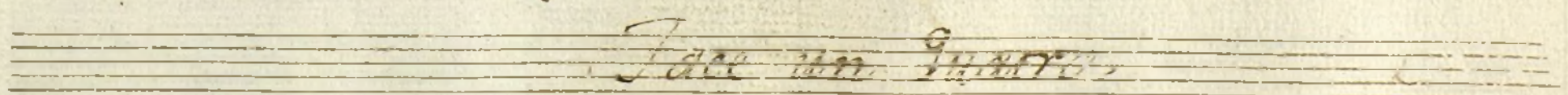
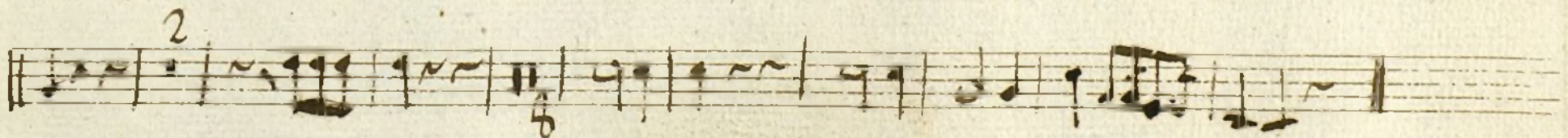
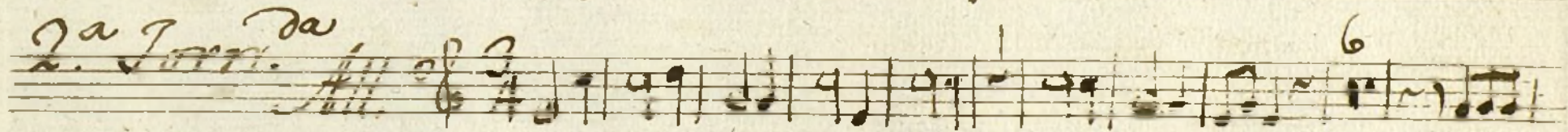
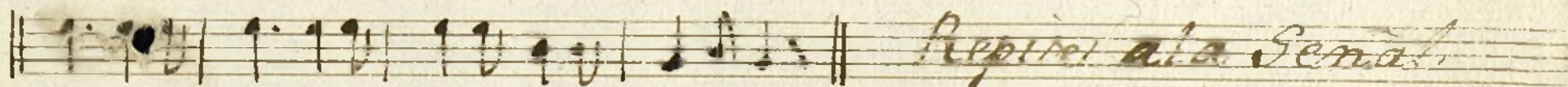
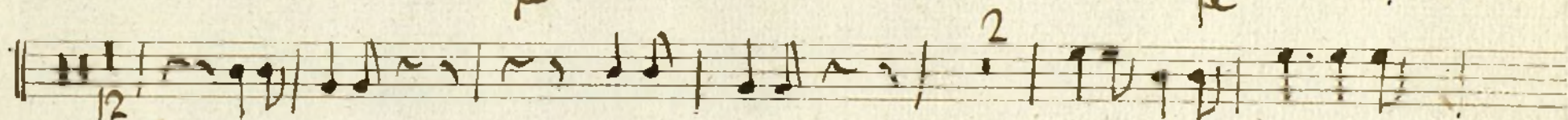
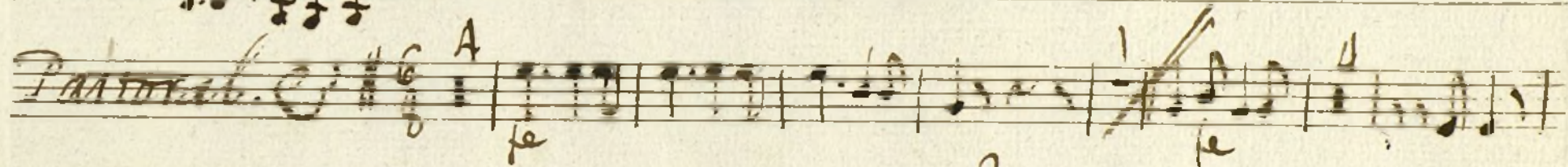
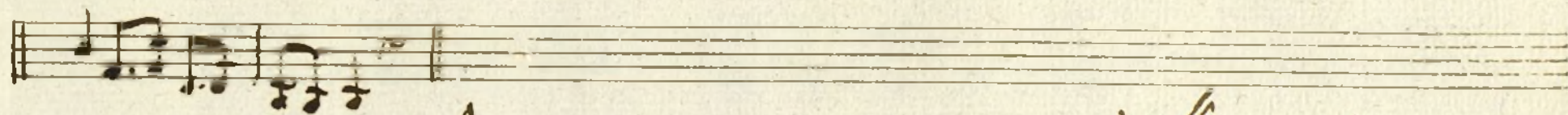
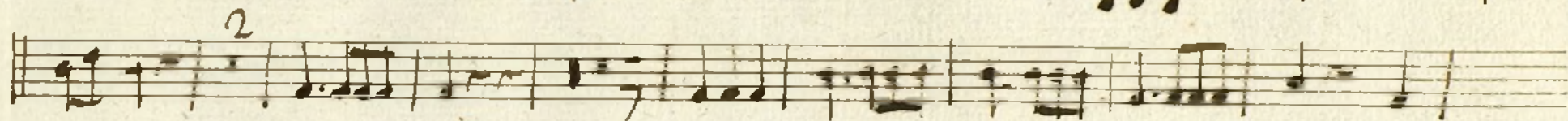




Ayuntamiento de Madrid



*Trompa 2ª Con<sup>te</sup> el Barbaresco Andantino*





Ayuntamiento de Madrid