

Leg. 7 n. 31

Mus 6-16

6-16

t

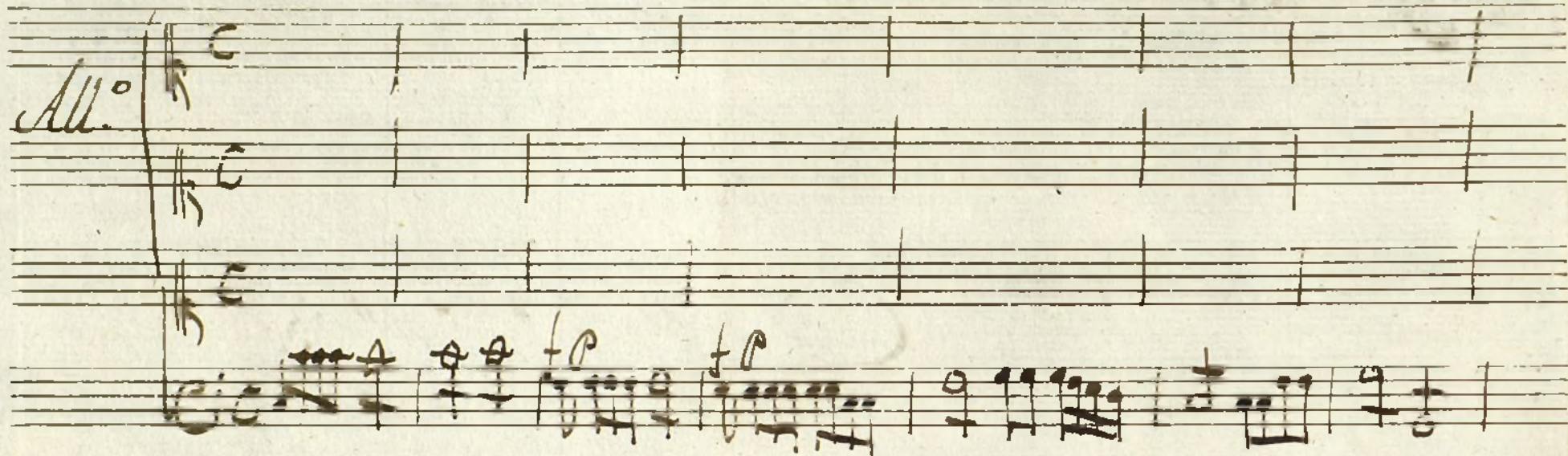
Com. 4 Leg. 4 n. 30

La fama es la mejor Dama.

De Lacerda.

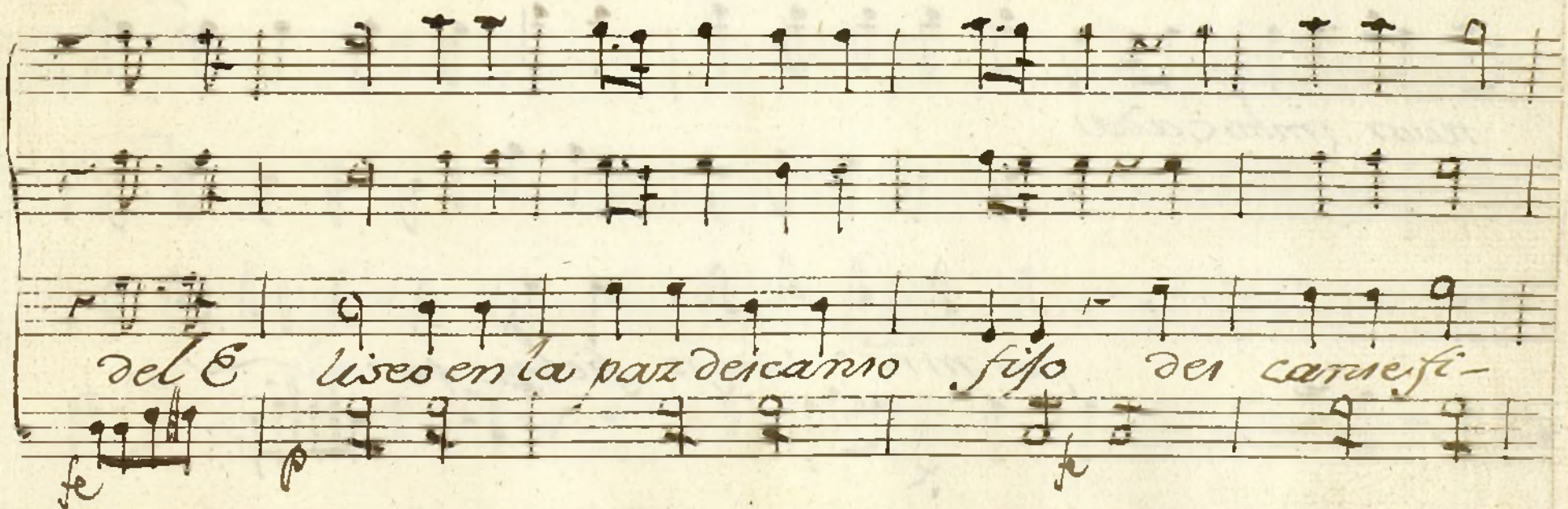
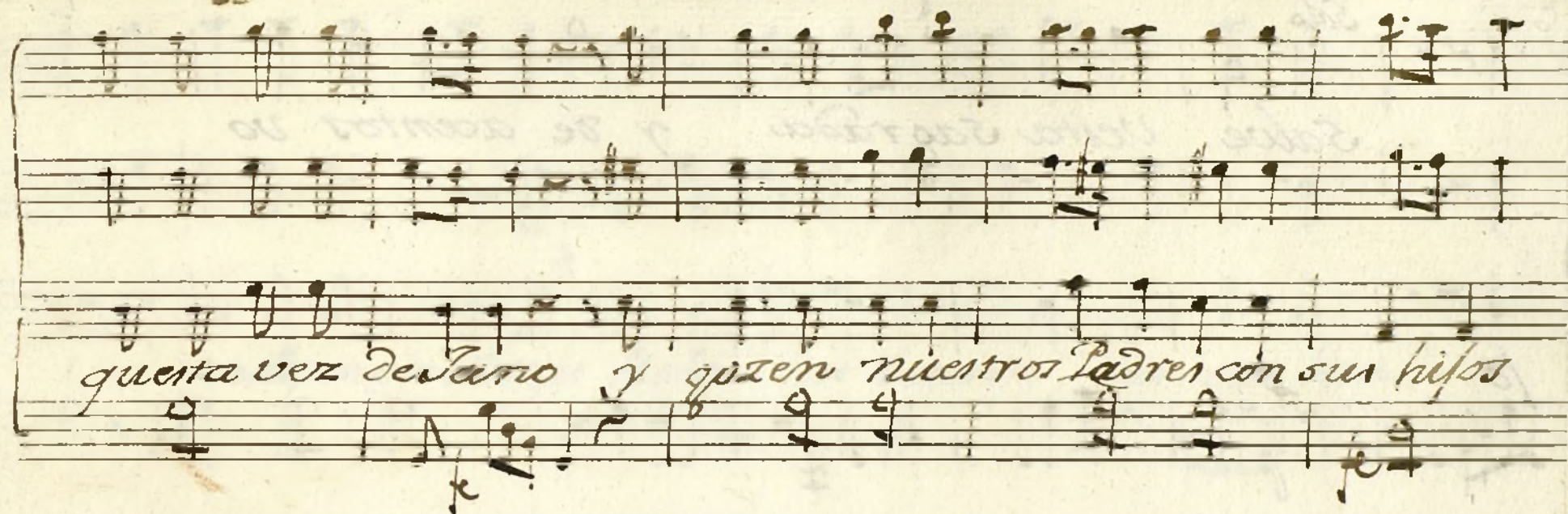
1200005108

All.^o



Jupiter Soberano Soberano

Jupiter Soberano cierre el templo a.



Solo

Salve Vesta sagrada. y de acentos vo

lo.

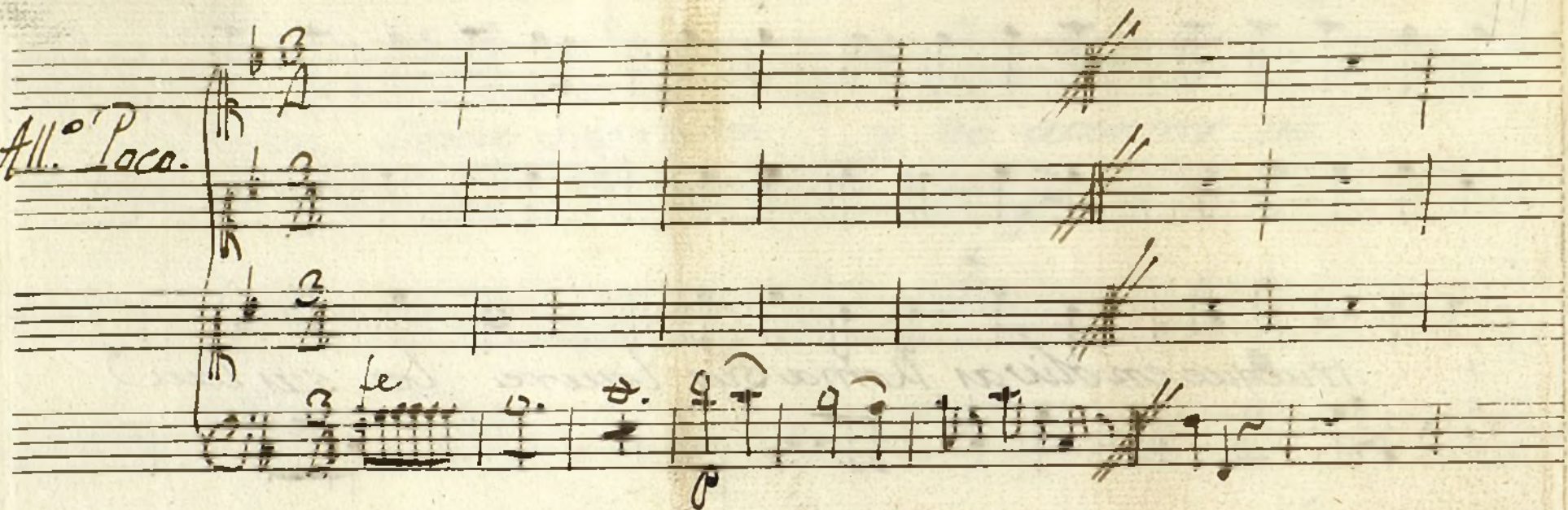
tivos imbo cada

por nros ruegos fieles por

trulque en olivas Roma sui laure les sui lau

re les.

All.^o Poco.



Como ala yedra como ala
en esta union los enlace

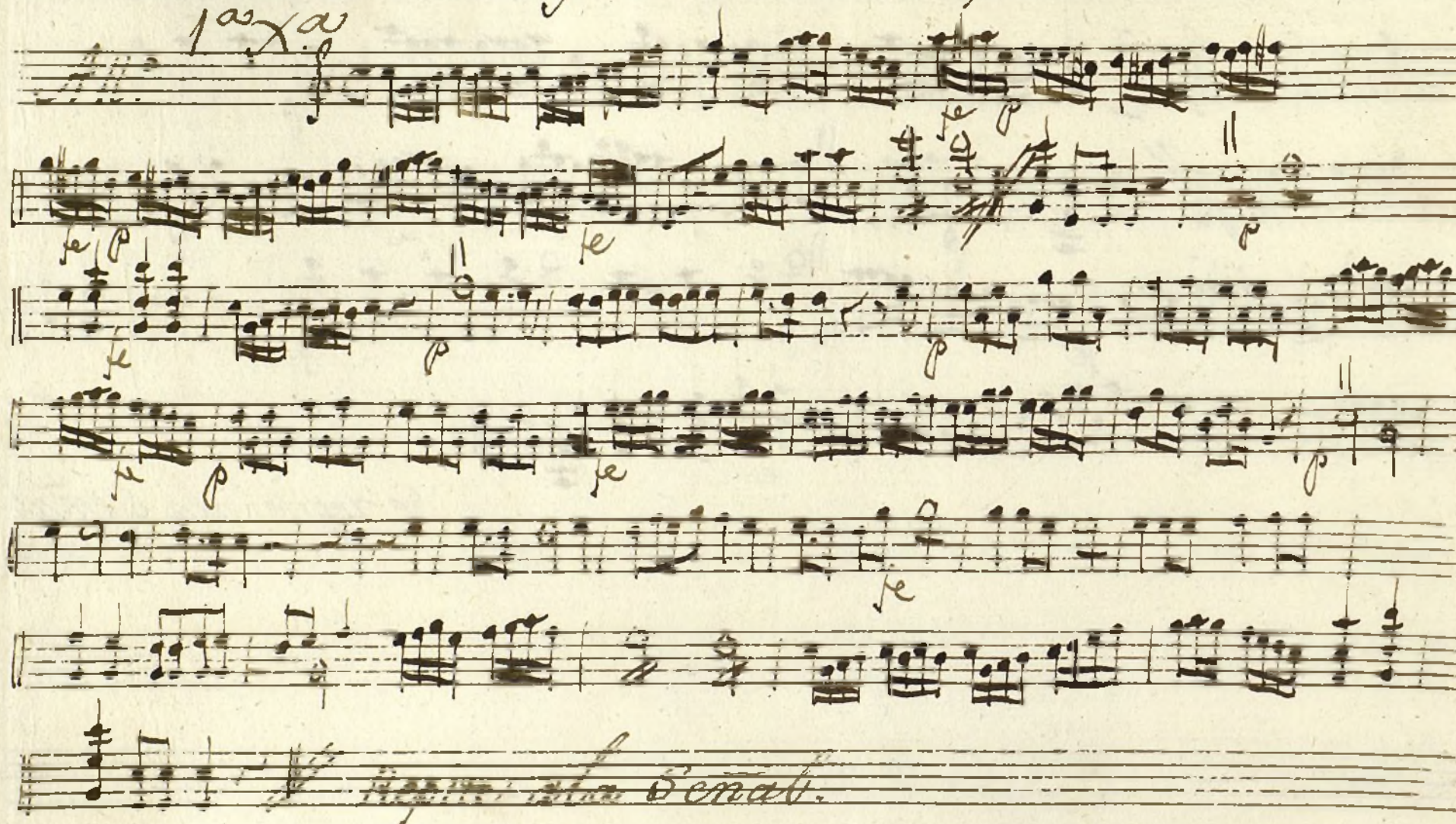
Yedra vel olmo.

Ayuntamiento de Madrid



Violin 1^o Com. *La fama es la mejor Dama.*

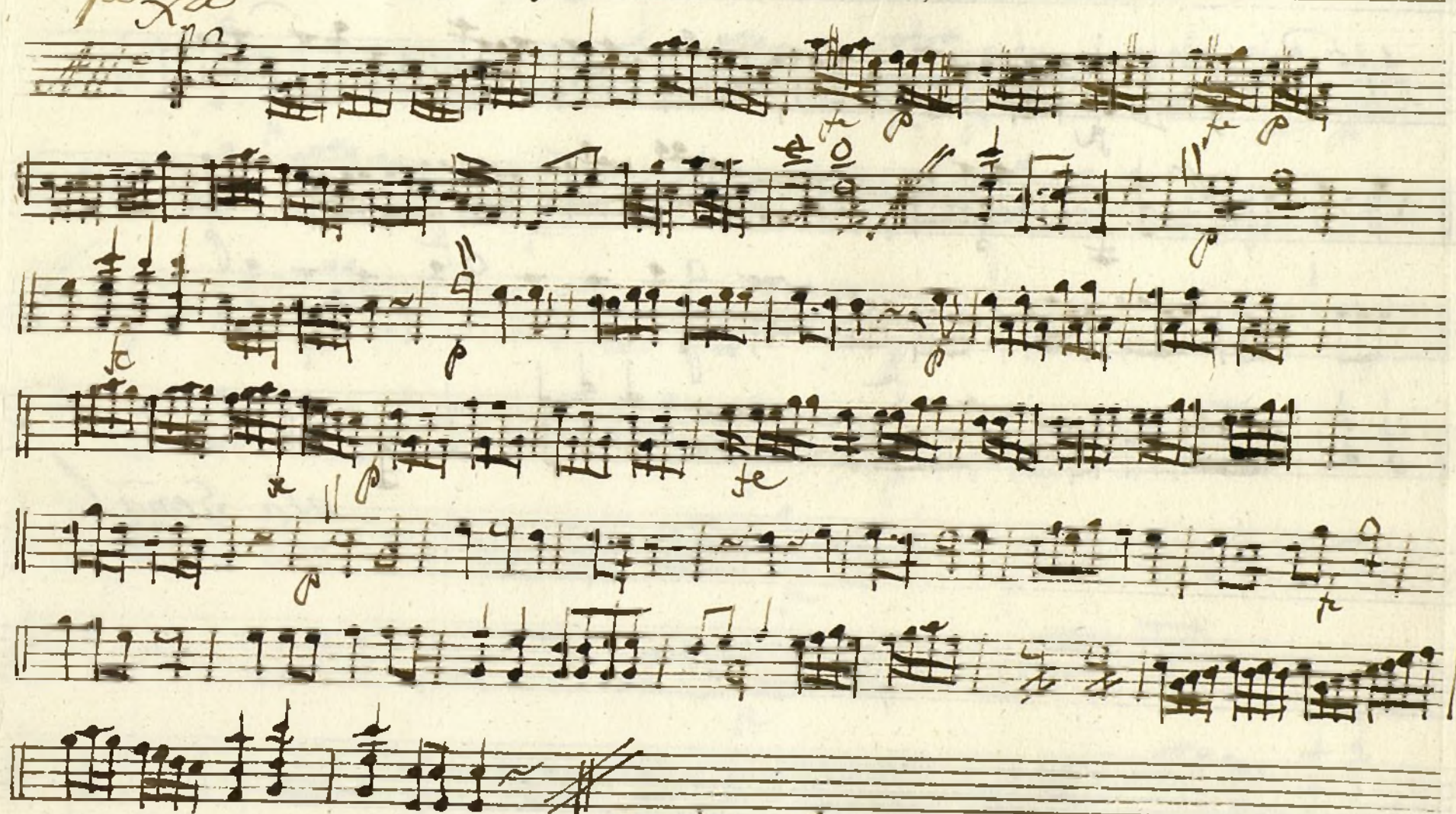
122



Signe

19. l. 1^o Com a la forma de la major 2^a m. i.

1a Xa



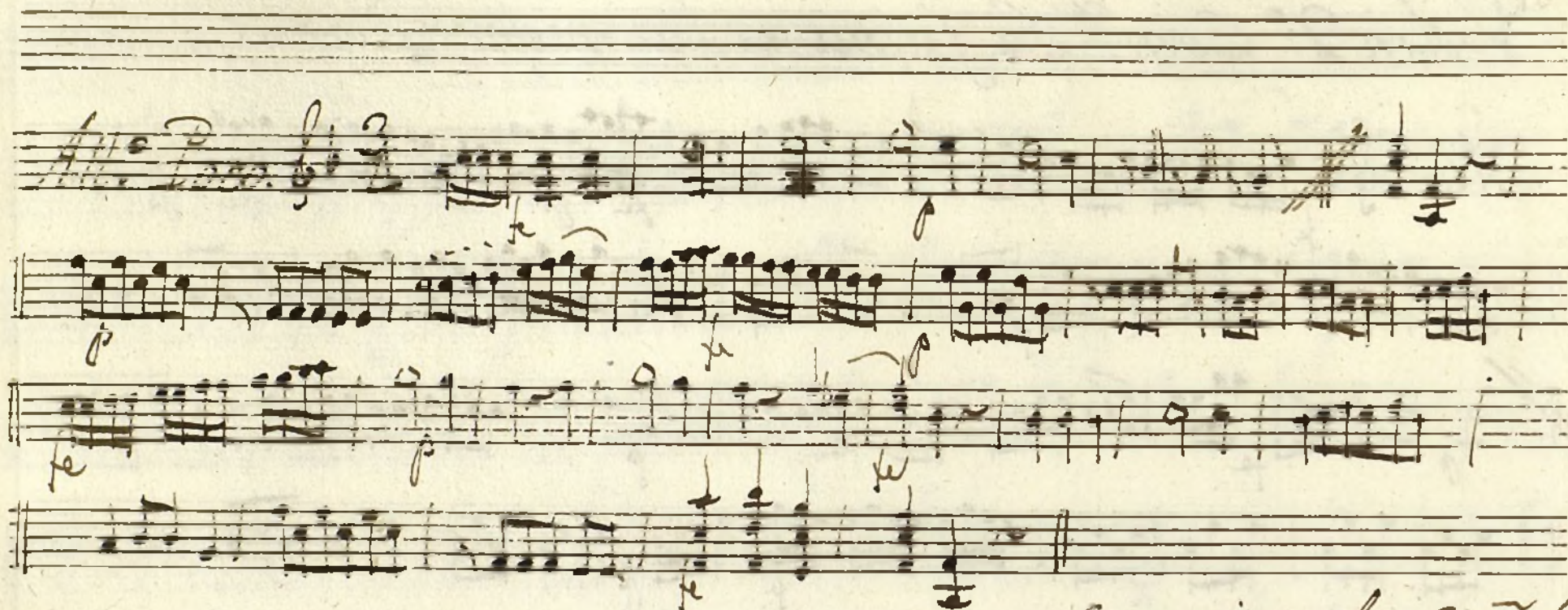
Reprezintă ală Senāt. //

Signe



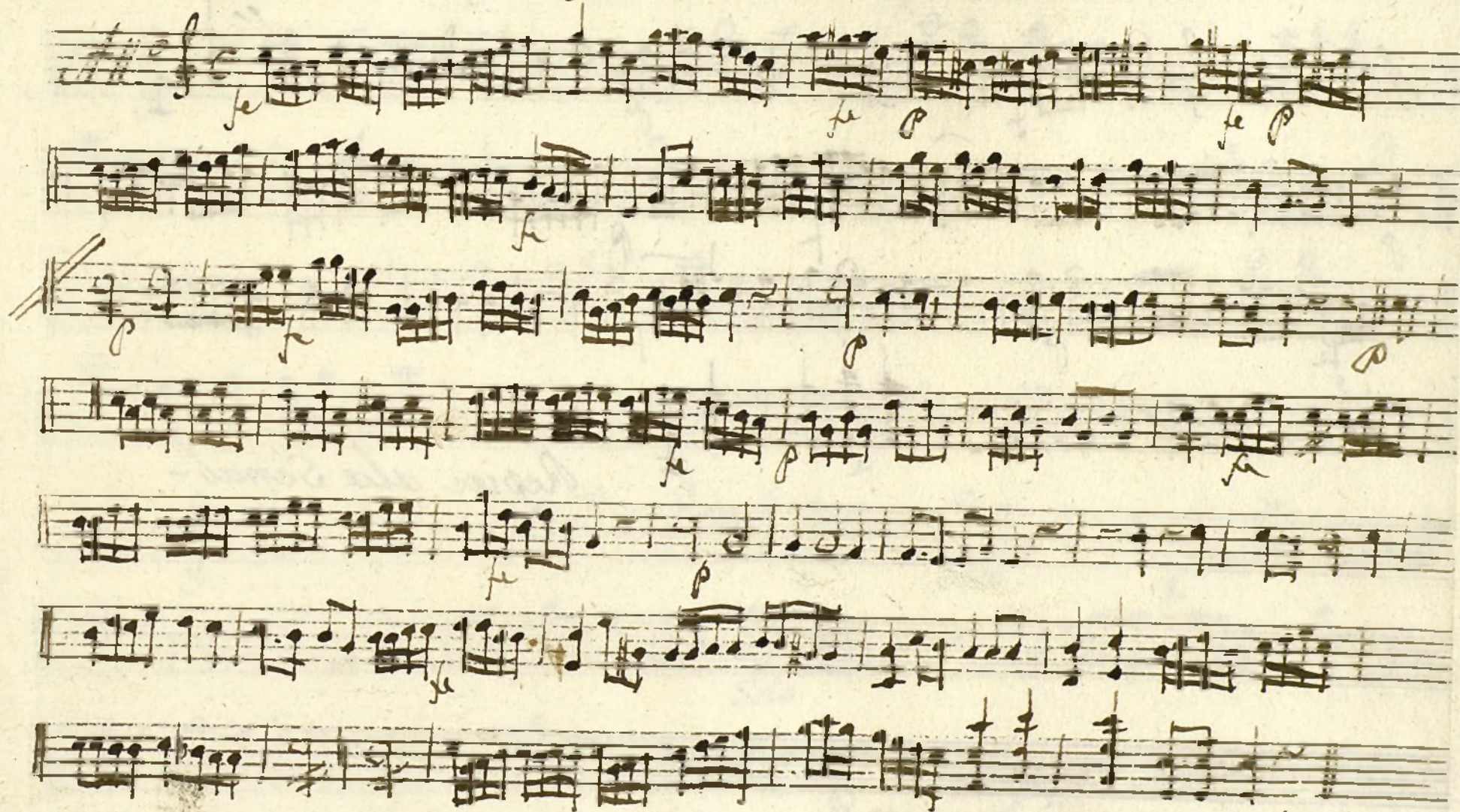
Violin 2.º Com.ª La fama es la mejor Dama.

ala señal.
Sigue.



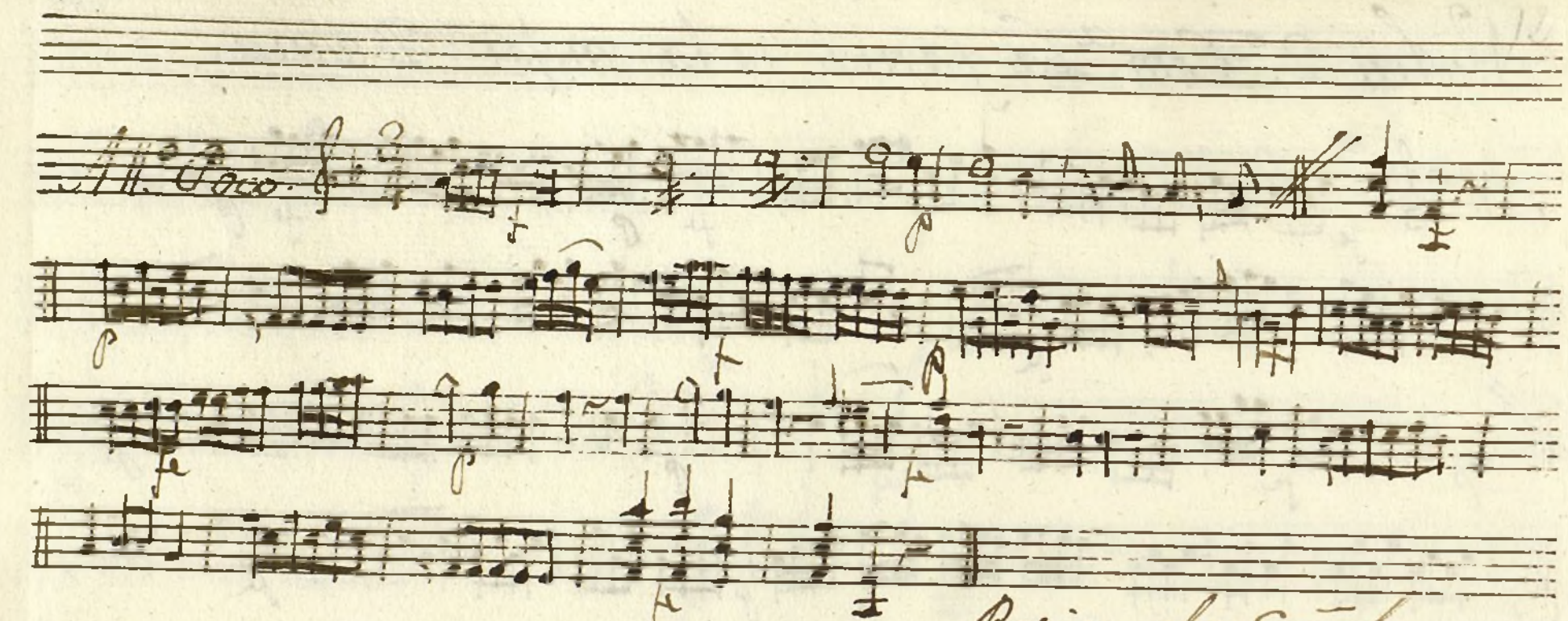
Se repite la Señal-

Violin 2.º Con. La fama es la mejor Dama.



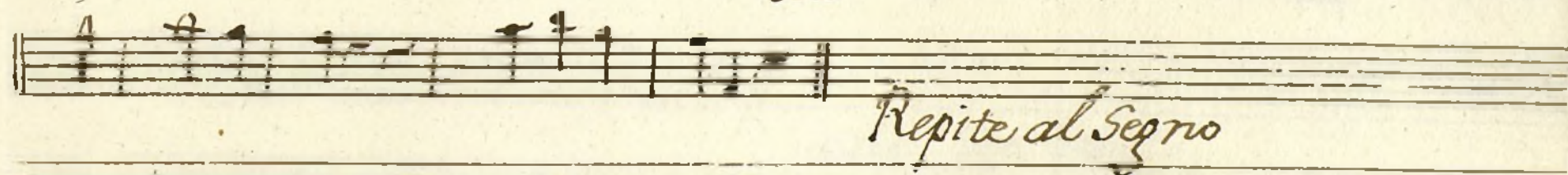
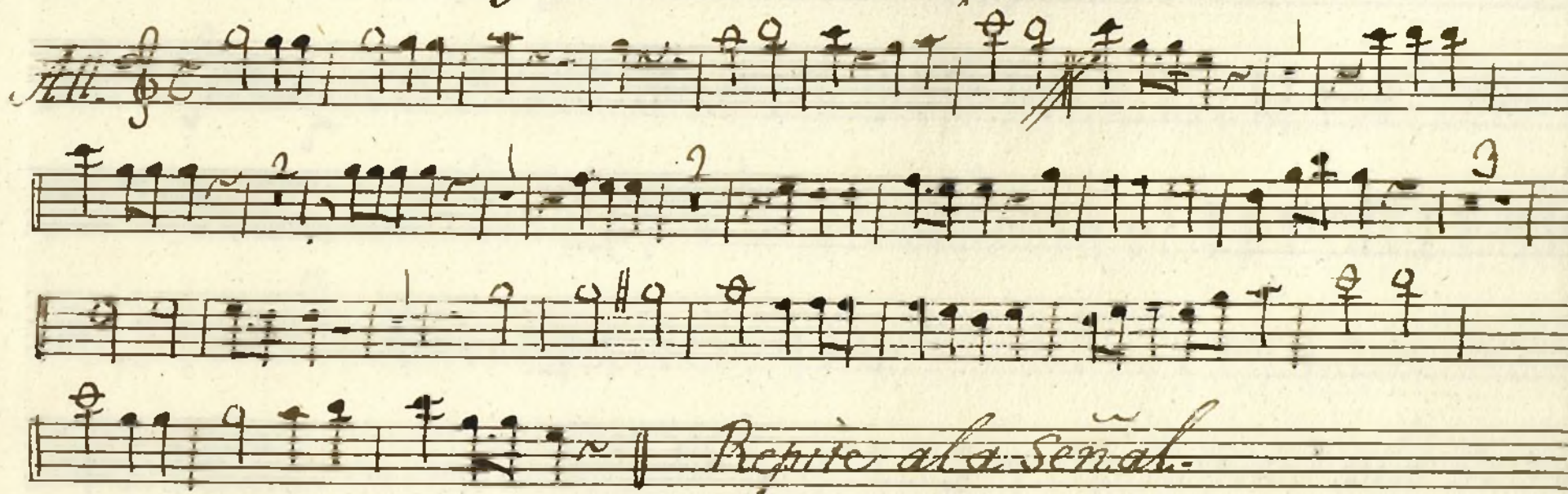
Repite ala
Dama.

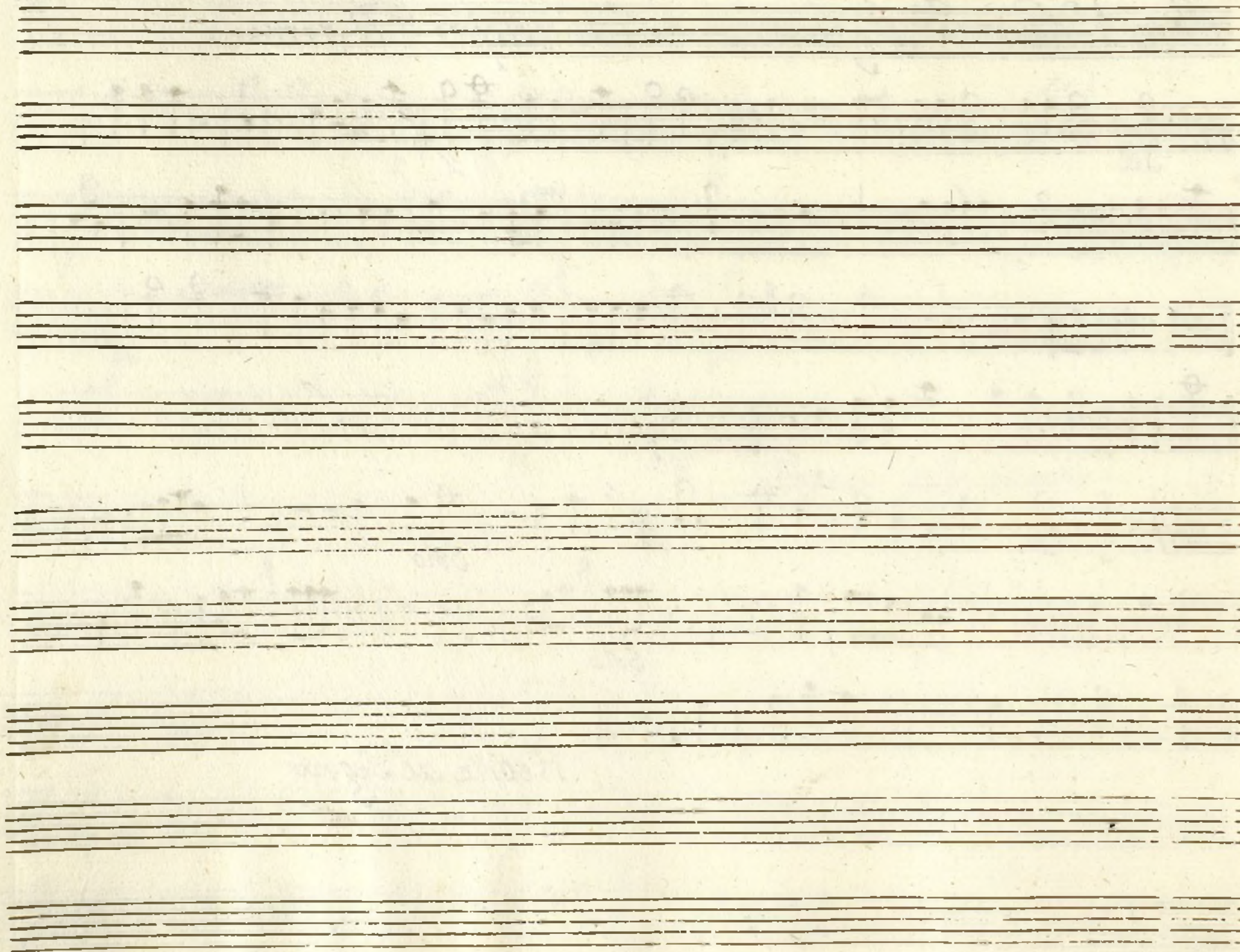
Sigue



Repita ala Señal-

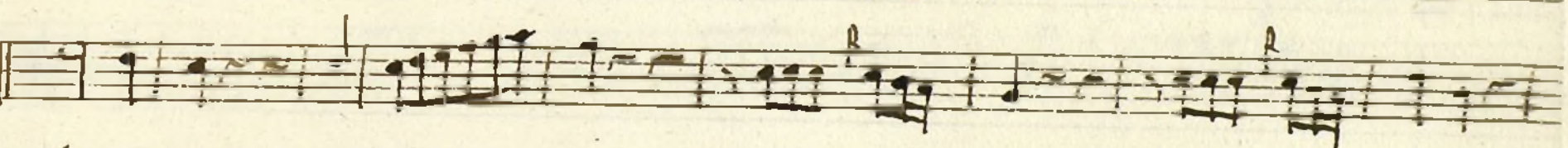
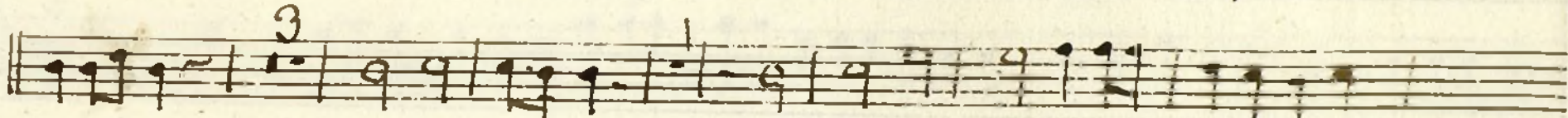
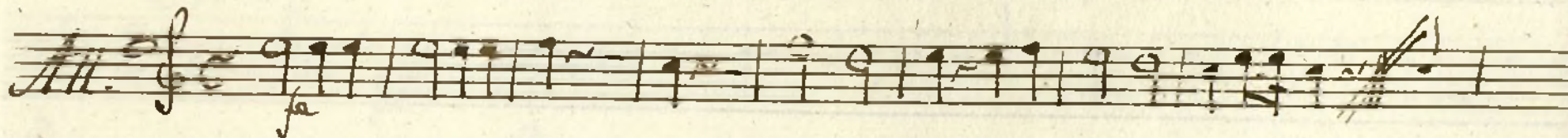
Oboe 1.º *Con a* *La fama es la mejor Dama.*





Ayuntamiento de Madrid

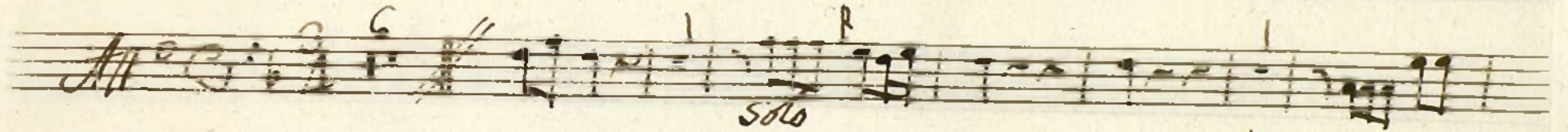
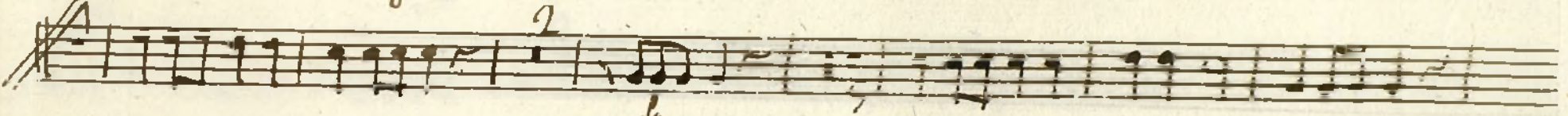
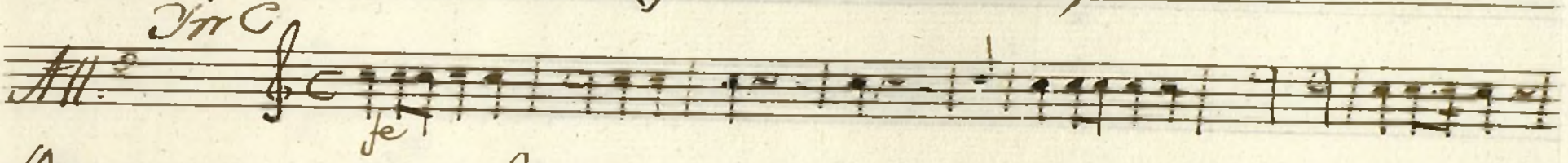
Abre 2.^a Com.^a La farra a la mejor Dama.

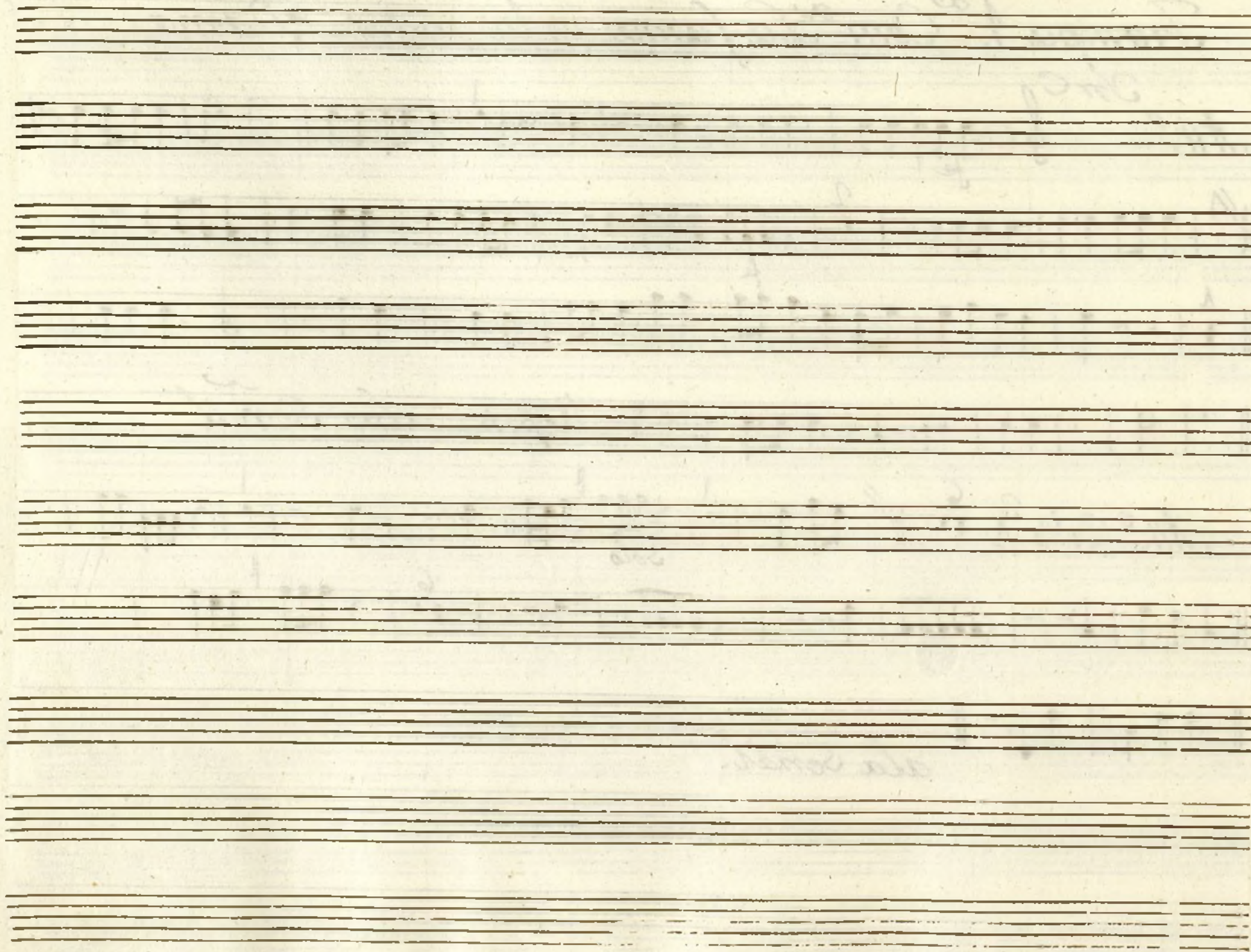


ala Señal.

Ayuntamiento de Madrid

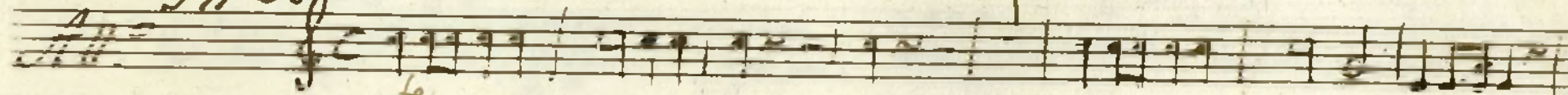
Tempo 1^o Con La fama es la mejor Dama





Trompa 2.^a Corn. La fama es la mejor Dama.

In C.

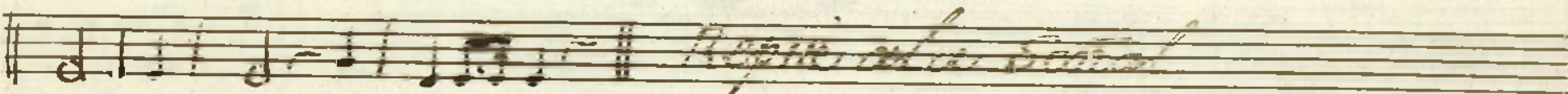
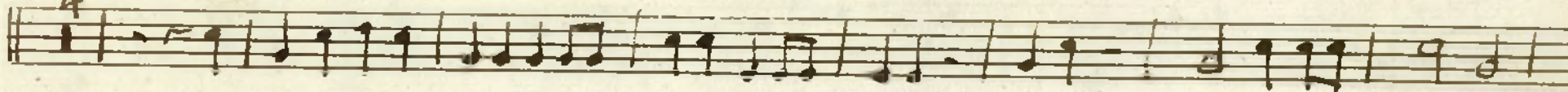


fe

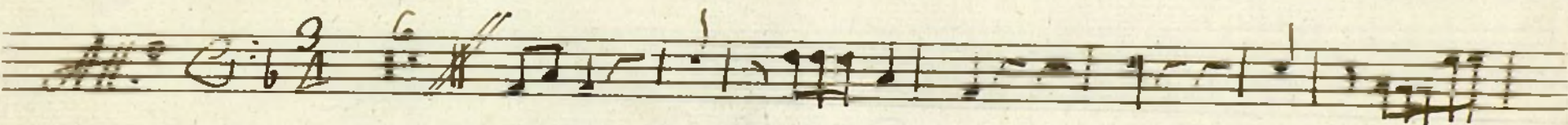
2



4



Repetir al a señal



ala señal.

Ayuntamiento de Madrid

Bajo. Com.^a La fama es la mejor Dama.

Handwritten musical score for the first system. It consists of five staves. The top staff is for the vocal part, marked 'Al.' and 'Canto'. The following four staves are for the piano accompaniment, with various musical notations including notes, rests, and dynamic markings like 'p' (piano). The system concludes with the instruction 'ala Señal.' written in cursive.

Handwritten musical score for the second system. It consists of three staves. The top staff is for the vocal part, marked 'Al.' and 'Canto'. The following two staves are for the piano accompaniment. The system concludes with the instruction 'Repite ala Señal.' written in cursive.

