

Leg.^o 4 Leg.^o 6.^o de comedias n.^o 39.

Coro en la

Loa.

Venid, venid, provincias!
de Laserna

año de 1406

Handwritten musical score for four staves. The first three staves are for voices or instruments in 2/4 time, each starting with a treble clef and a key signature of one flat (B-flat). The fourth staff is for a basso continuo or keyboard, also in 2/4 time, starting with a bass clef and a key signature of one flat. The music consists of a series of whole and half notes, with some beamed eighth notes in the fourth staff.

Handwritten musical score for four staves with lyrics. The first staff is for a vocal part, starting with the lyrics "todos y todas" and "Duo". The second and third staves are for a vocal part, starting with the lyrics "venid venid ve nid Provincias venid venid Pro". The fourth staff is for a basso continuo or keyboard, starting with the lyrics "fe" and "arco". The music consists of a series of whole and half notes, with some beamed eighth notes in the fourth staff.

Duo *todos*

vincias venid venid todas armadas venid todas ar
vincias ve nid ve nid to das armadas ve nid todas ar
vincias venid venid ve nid todas ar
arcofe.

punt.º

madar. *g.º* Madrid ya esta libre
madar. *g.º* Madrid ya esta libre
madar. *g.º* Madrid ya esta

p.º *f.*

que Madrid ya esta libre y de sea con ansia y de

que Madrid ya esta libre y de sea con ansia y de

li bre que Madrid ya esta libre y de

f.

sea con an—sia de fen der con vo so tras vale

sea con an—sia de fen der con vo so tras vale

sea con an—sia

roso. su Santa Religion su Santa Reli

roso. su Santa Religion su Santa Reli

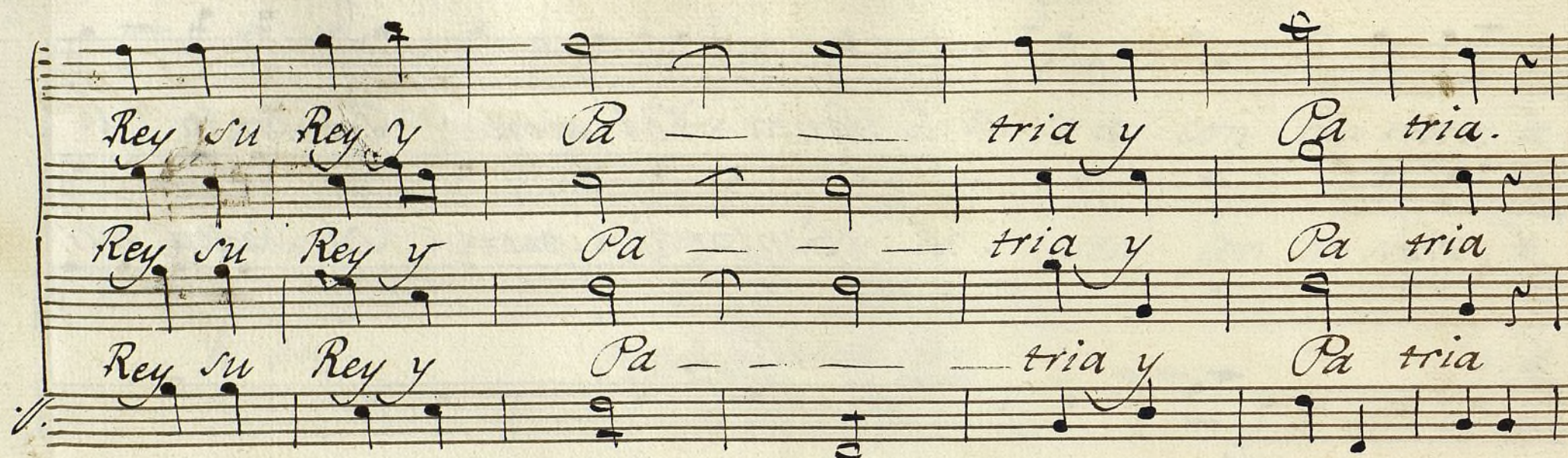
fe

gion su Rey y Pa - tria su Rey su Rey su Rey su

gion su Rey y Pa - tria su Rey su Rey su Rey su

gion su Rey y Pa - tria su Rey su

f. fe



Handwritten musical score for three voices (Soprano, Alto, and Tenor/Bass) with lyrics. The lyrics are: "Rey su Rey y Pa tria y Pa tria." The music is written on three staves. The first staff (Soprano) has a treble clef and a key signature of one sharp (F#). The second staff (Alto) has a treble clef and a key signature of one sharp (F#). The third staff (Tenor/Bass) has a bass clef and a key signature of one sharp (F#). The lyrics are written below the staves. The first staff has a final note with a fermata. The second and third staves have a final note with a fermata. The lyrics are: "Rey su Rey y Pa tria y Pa tria."



Four empty musical staves, likely for a second system of music.

Violin I.^o Coro en la Loa

p.l. MUS 33-13

Handwritten musical score for Violin I. The score is written on ten staves. The first staff has a treble clef, a key signature of one flat (Bb), and a time signature of 2/4. The music is written in a cursive, handwritten style. Various musical notations are present, including notes, rests, and dynamic markings. The score is divided into measures by vertical bar lines. Some measures contain repeat signs (double bar lines with dots). The handwriting is elegant and typical of 19th-century musical notation.

Dynamic markings and performance instructions include:

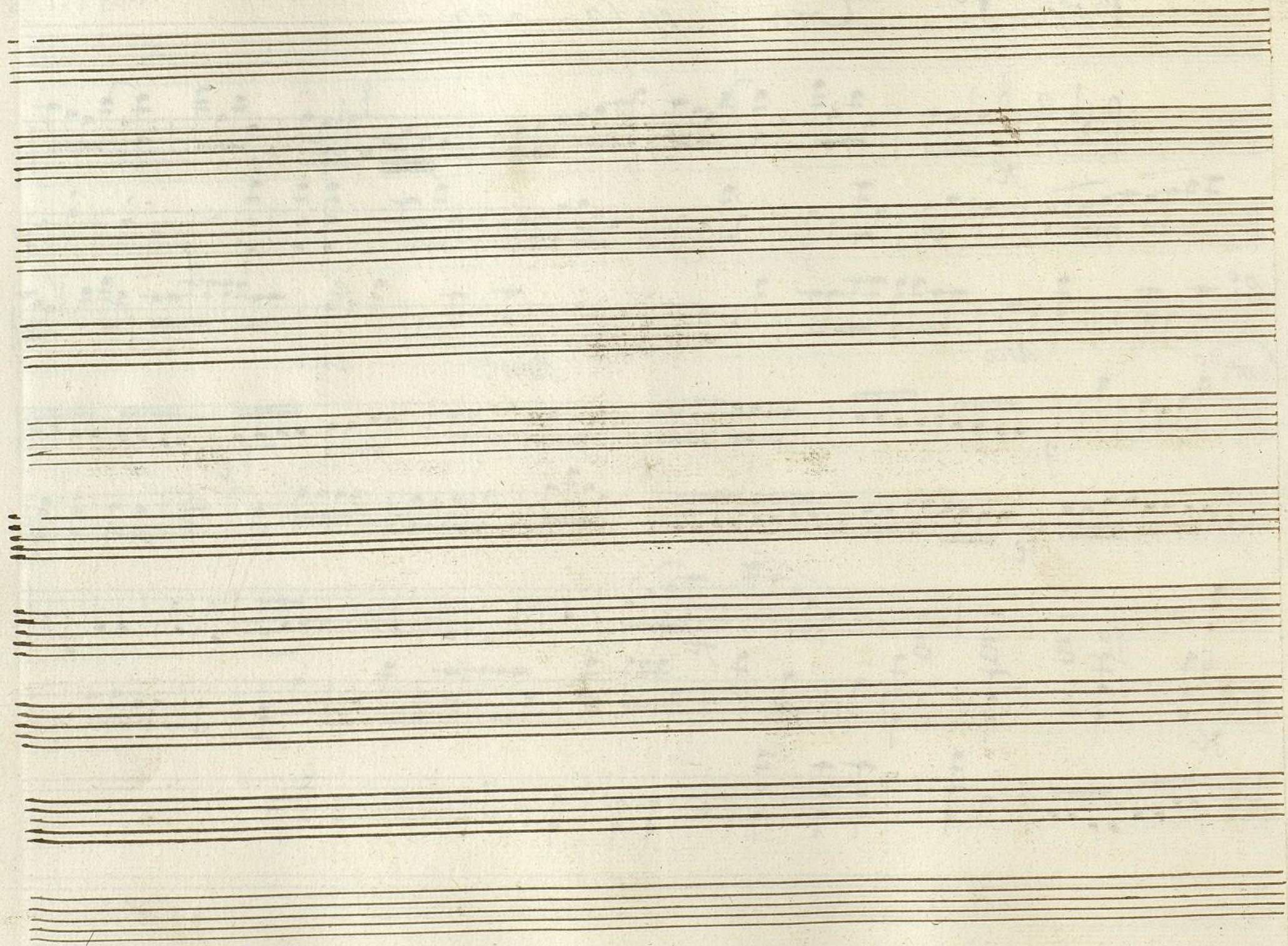
- fe* (forte)
- punt.^o* (punctuated)
- arco* (arco)
- punt.^o* (punctuated)
- arcof.* (arcoforte)
- p.^o* (piano)
- fe.* (forte)
- f.* (forte)
- p.* (piano)



Violin 1.º Coro en la Loa

MUS 33-13

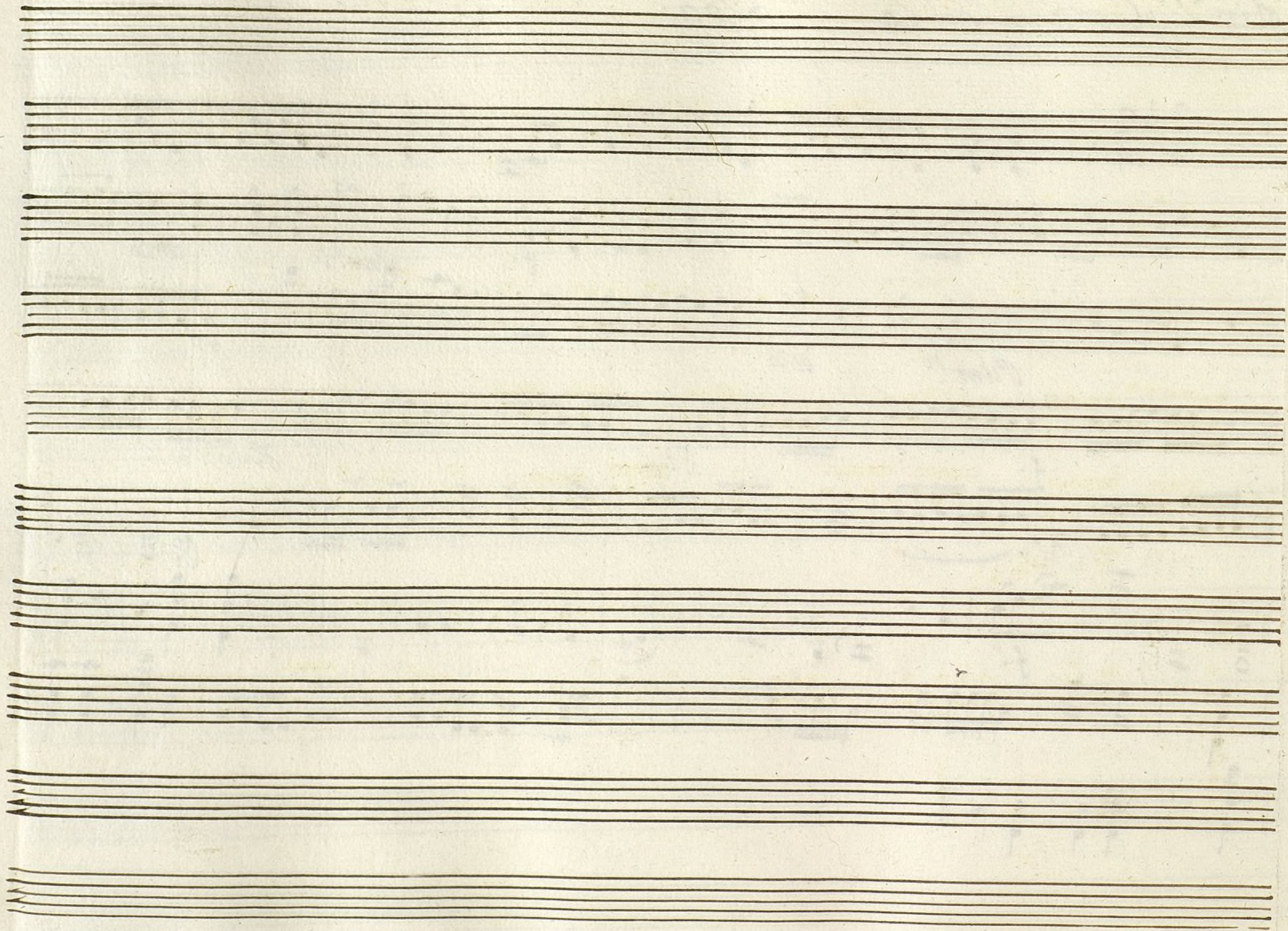
Handwritten musical score for Violin 1.º and Coro en la Loa. The score consists of eight staves. The first staff is for Violin 1.º, starting with a treble clef, key signature of one flat (B-flat), and a 2/4 time signature. The subsequent staves are for the Coro. The music features various dynamics including piano (p.), fortissimo (ff.), and piano (p.), as well as articulation like staccato (stacc.) and accents. The score ends with a double bar line on the eighth staff.



Violin 2.^o Coro en la Loa.

Mus 33-13

Handwritten musical score for Violin 2.^o Coro en la Loa. The score is written on ten staves. The first staff shows a treble clef, a key signature of one flat (B-flat), and a time signature of 2/4. The music consists of various rhythmic patterns, including eighth and sixteenth notes, and rests. Dynamic markings include 'f.' (forte), 'Punt.º' (punctato), 'arco' (arco), and 'p.' (piano). There are also markings for 'fl.' (flauto) and 'p.' (piano) on later staves. The notation is in a historical style, with some ligatures and specific note heads. The score ends with a double bar line on the tenth staff.



Violin 2º. || Coro en la Loa.

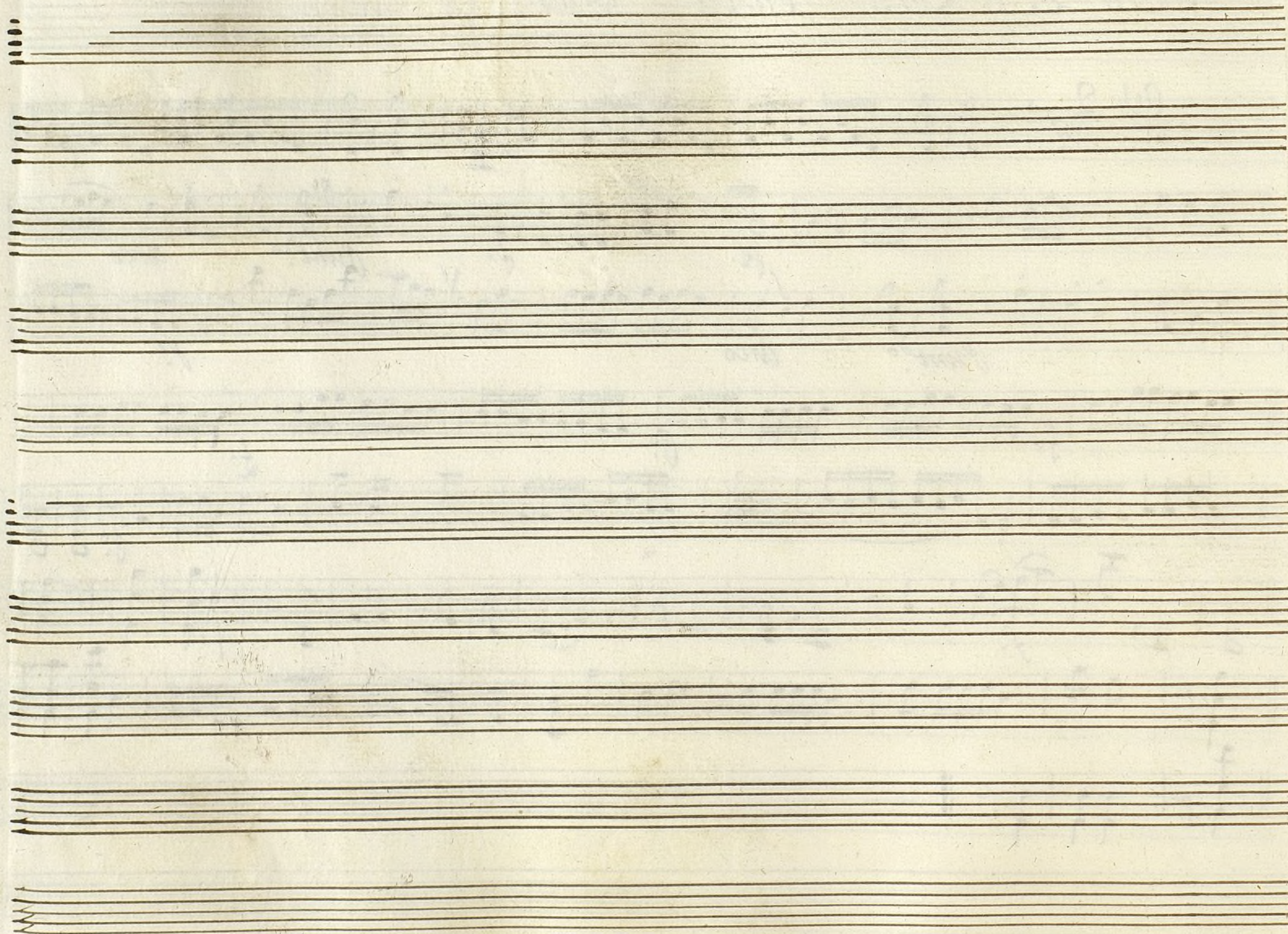
MUS 33-13

Handwritten musical score for Violin 2º and Coro en la Loa. The score is written on ten staves. The first staff is the Violin 2º part, starting with a treble clef, a key signature of one flat (Bb), and a 2/4 time signature. The subsequent staves are for the Coro, with various musical notations including notes, rests, and dynamic markings. The score includes several measures of music, with some measures marked with 'p' (piano) and 'f' (forte). The notation is in a historical style, with some notes and rests written in a shorthand manner. The score ends with a double bar line on the tenth staff.

Violin 2º. || Coro en la Loa.

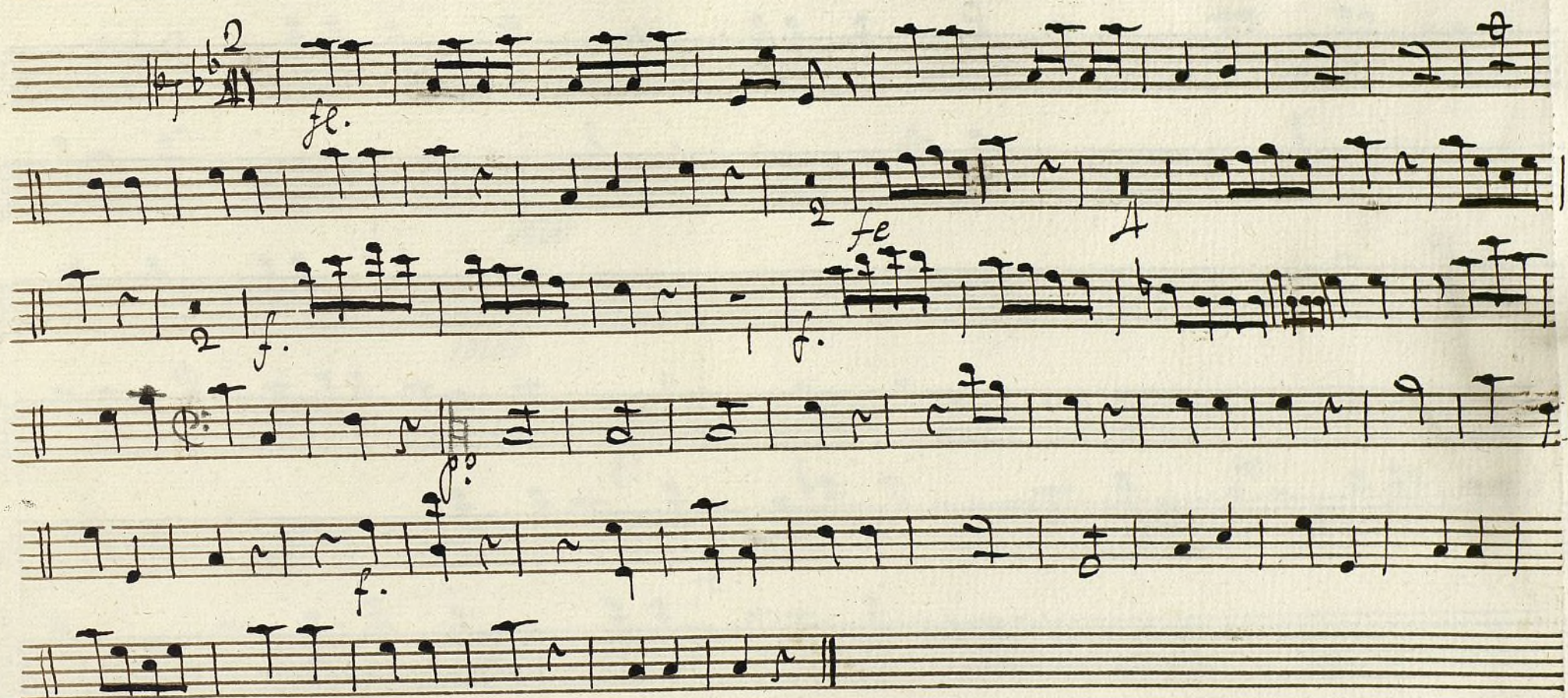
MUS 33-13

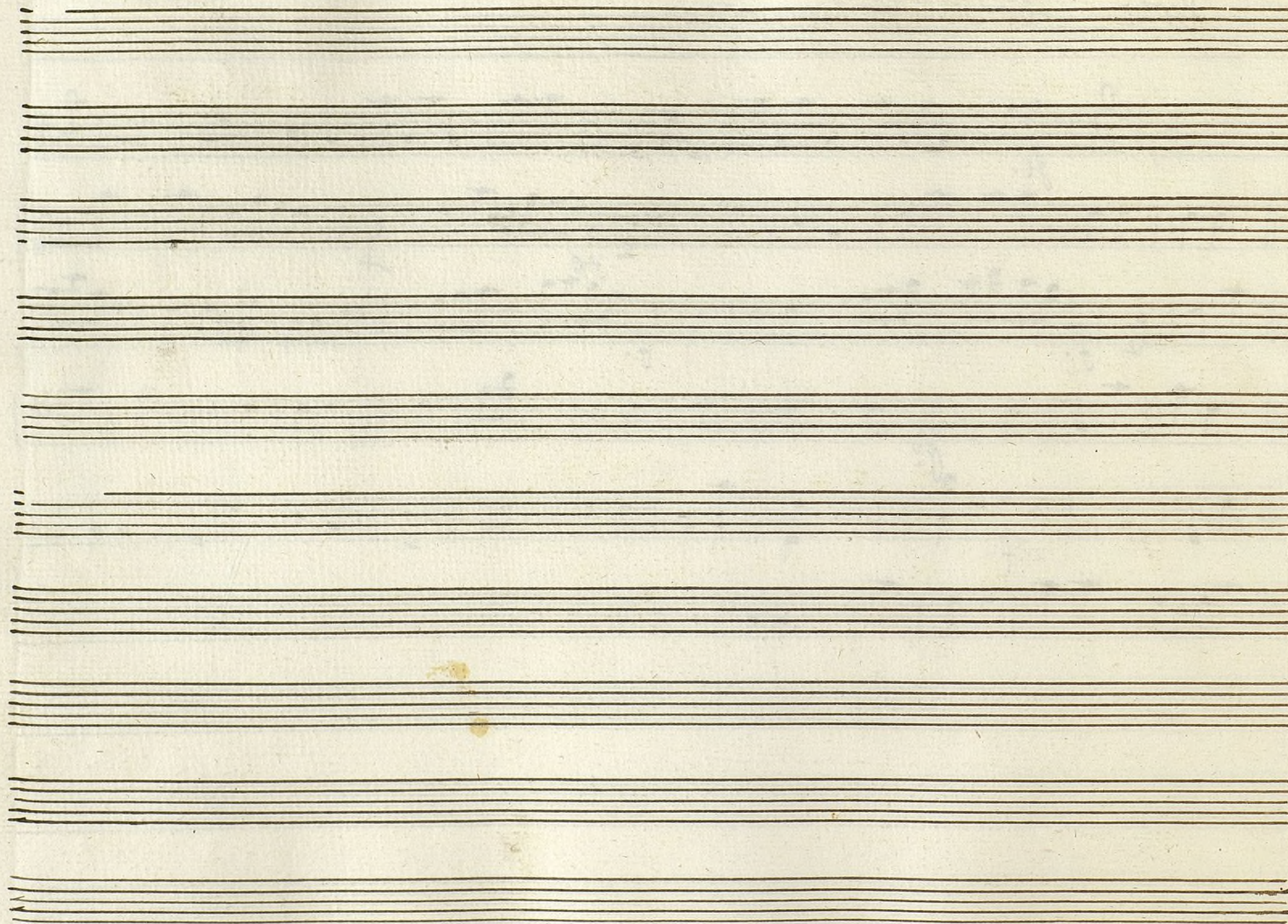
Handwritten musical score for Violin 2º and Coro en la Loa. The score is written on ten staves. The first staff is the Violin 2º part, starting with a treble clef, a key signature of one flat (Bb), and a 2/4 time signature. The subsequent staves are for the Coro, with various musical notations including notes, rests, and dynamic markings. The score includes several measures of music, with some measures marked with 'p' (piano) and 'f' (forte). The notation is in a historical style, with some notes and rests written in a shorthand manner. The score ends with a double bar line on the tenth staff.

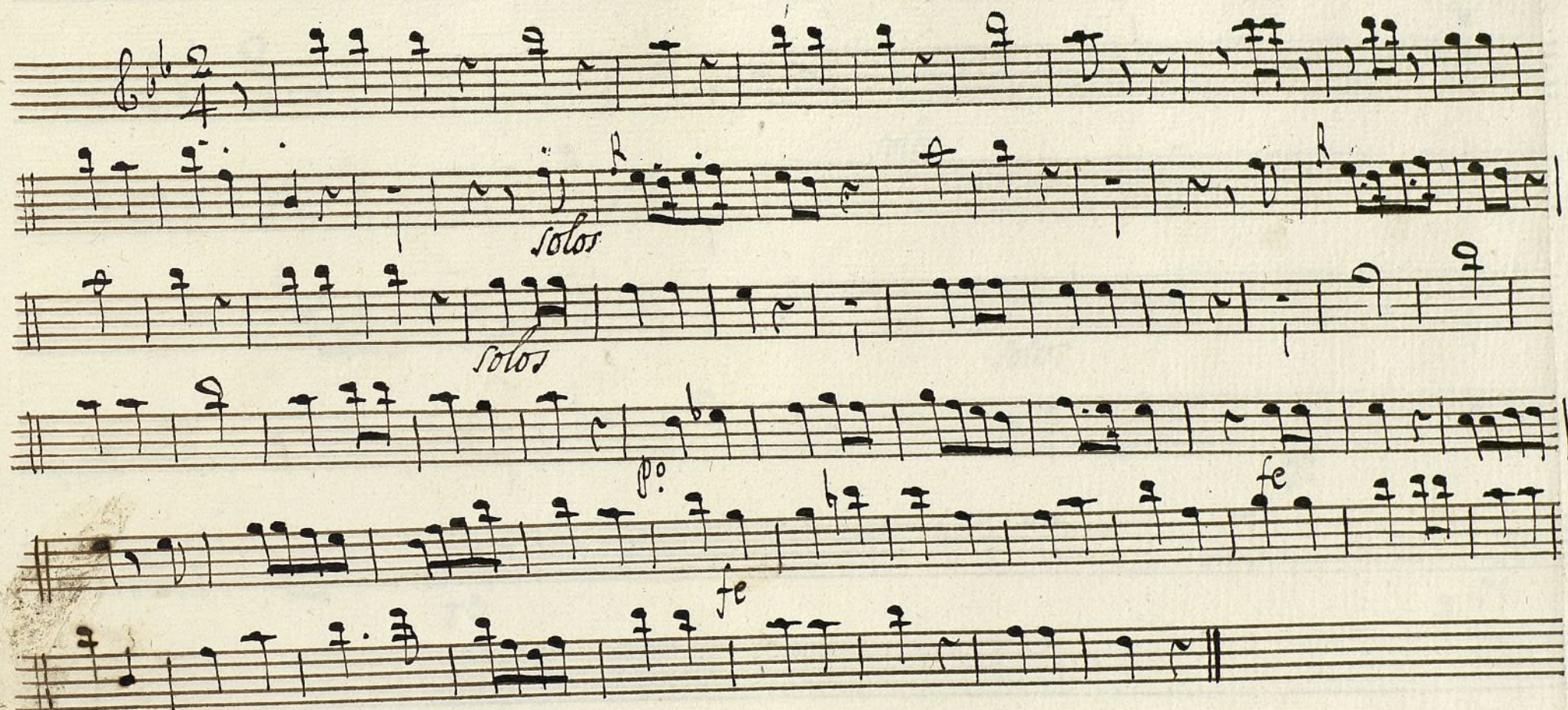


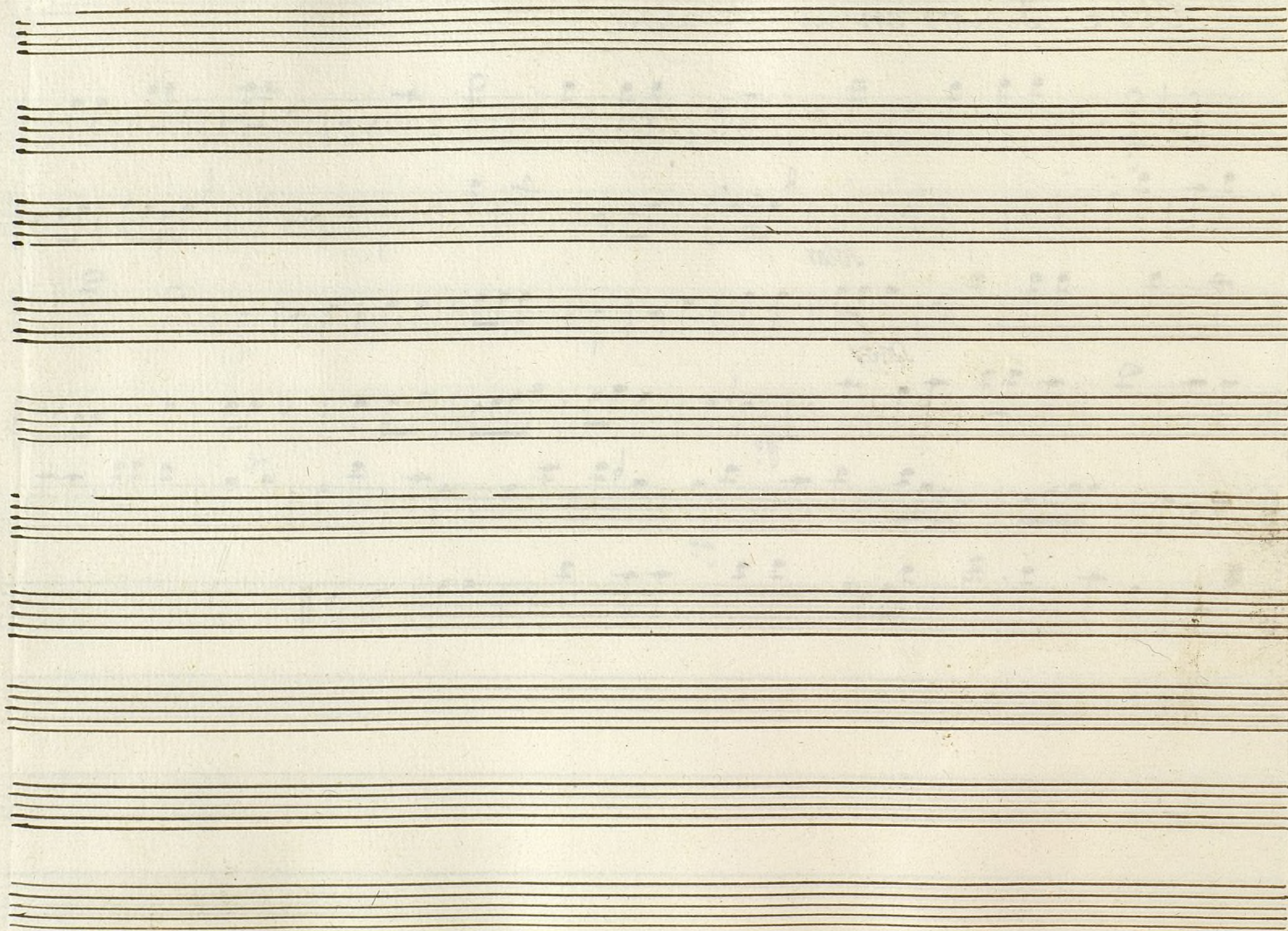
Viola Coro en la Lea

MUS 33-13



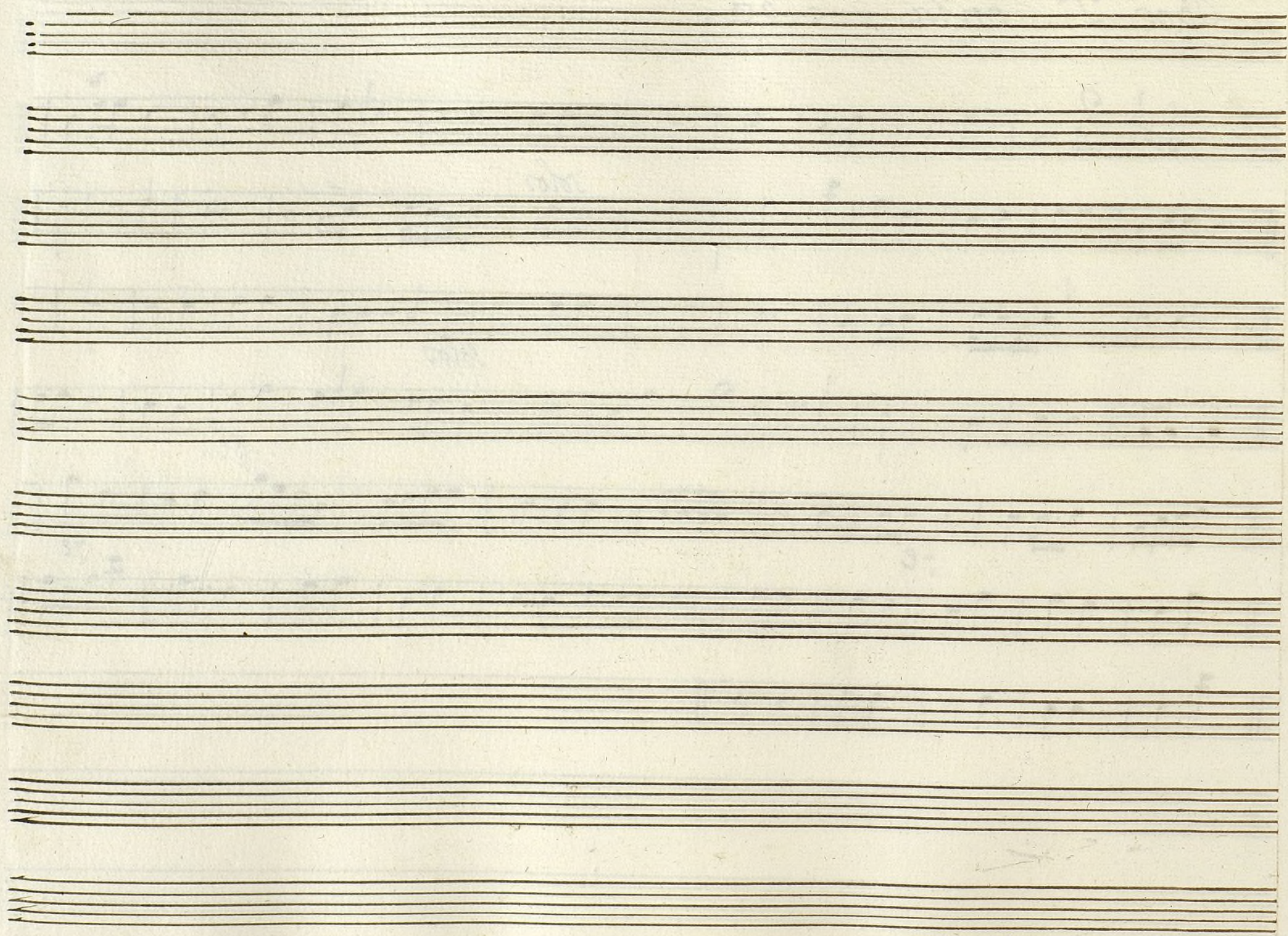


Oboe 1.º Solo en la *Loa*



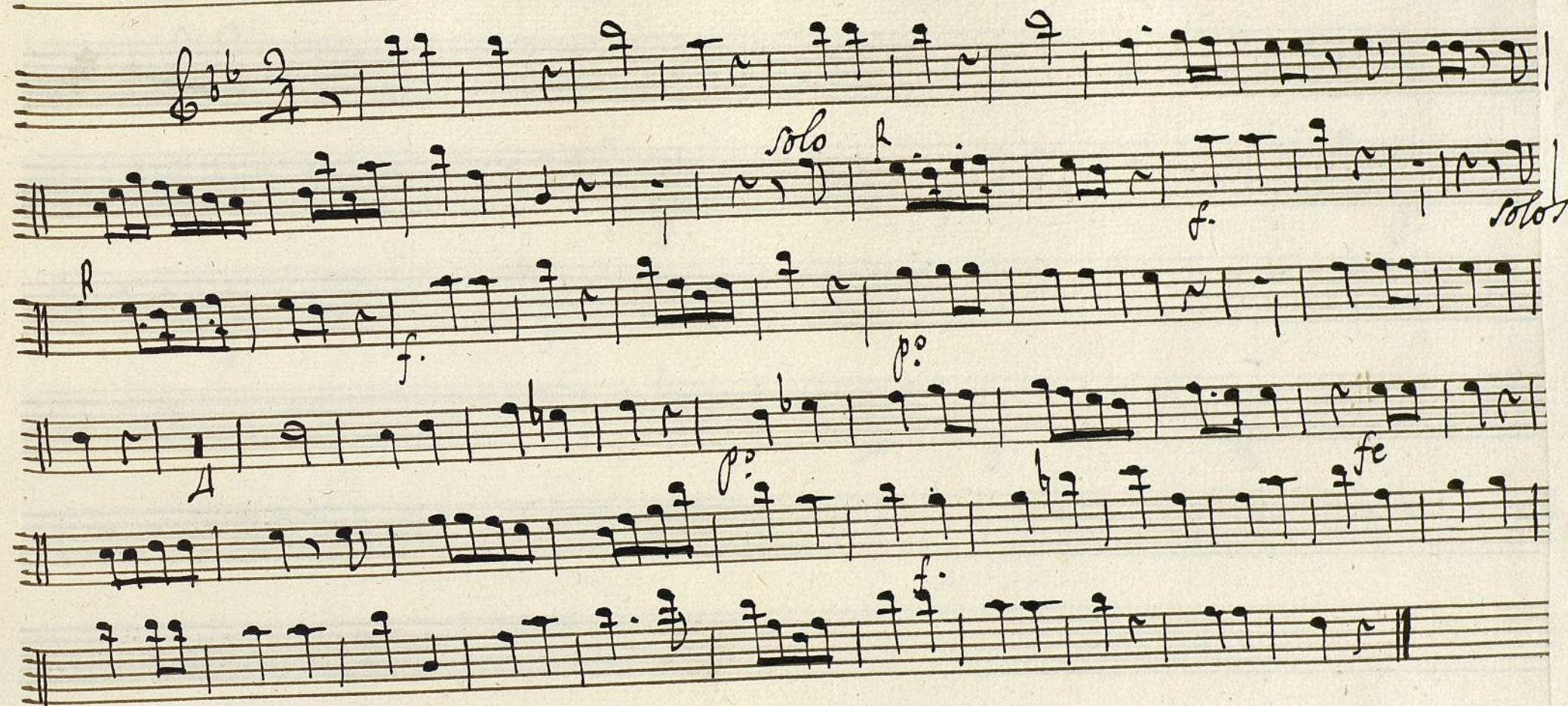
Oboe 2º en la — La.

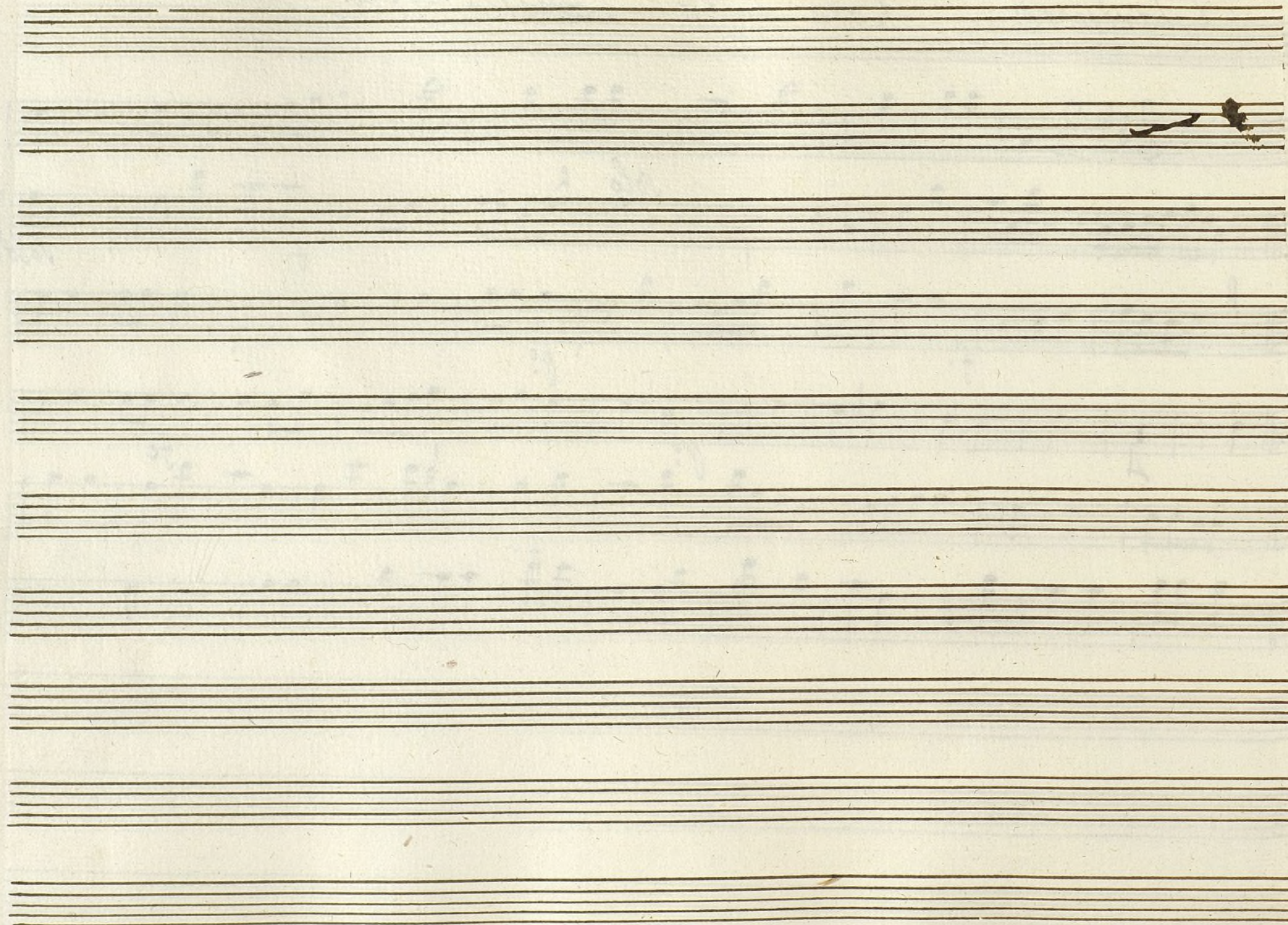
Handwritten musical score for Oboe 2º in the key of A major (one sharp) and 2/4 time. The score consists of seven staves. The first staff begins with a treble clef, a key signature of one sharp (F#), and a 2/4 time signature. The notation includes various note values (quarter, eighth, and sixteenth notes), rests, and dynamic markings. The word "solos" is written above the second staff, and "fe" (forte) is written below the fifth and seventh staves. The piece concludes with a double bar line on the seventh staff.



Clarinete Coro en la Comedia Lda.

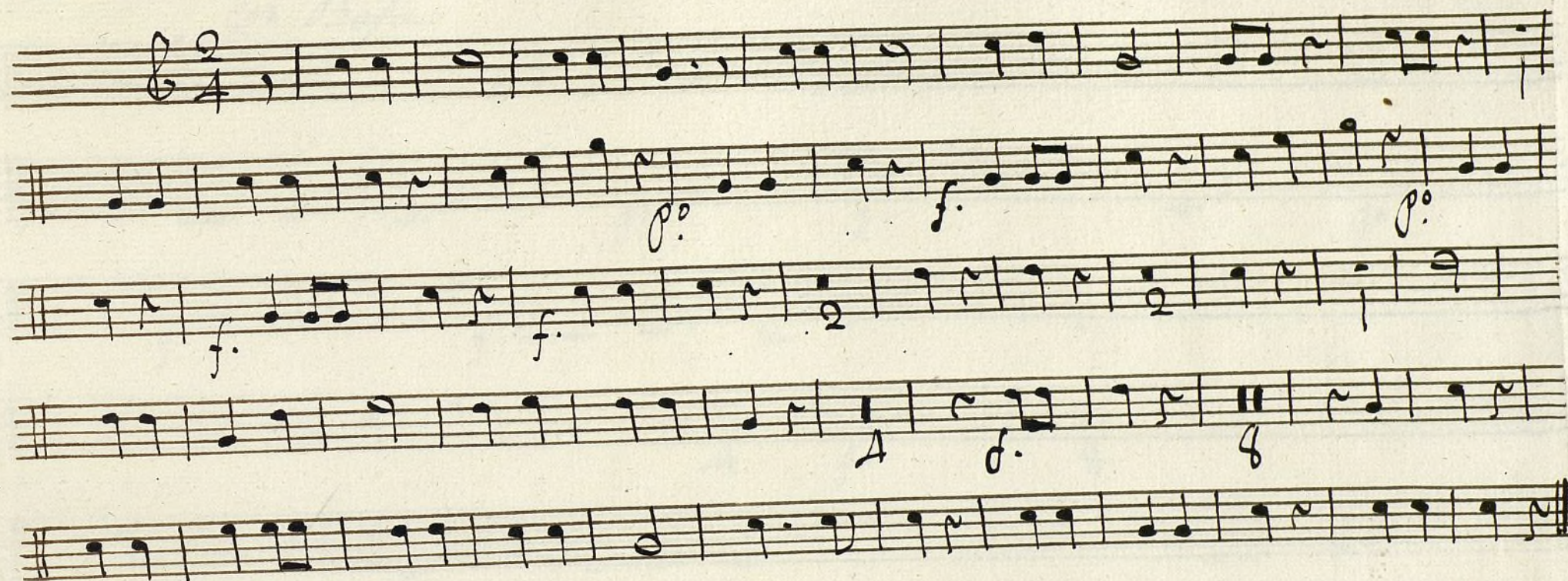
Mus 33-13

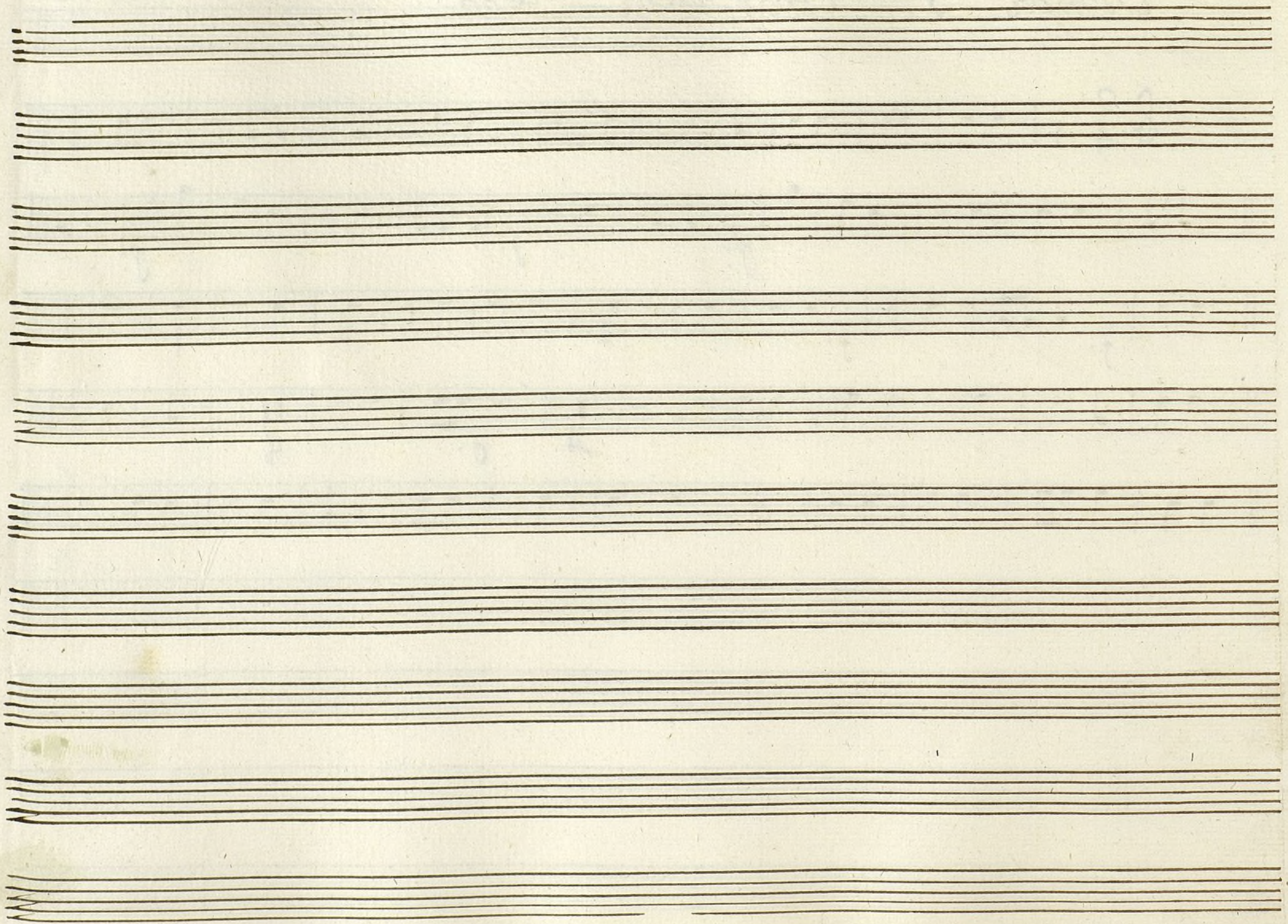




Trompa 1ª Coroll en la 2da

Mus 33-73



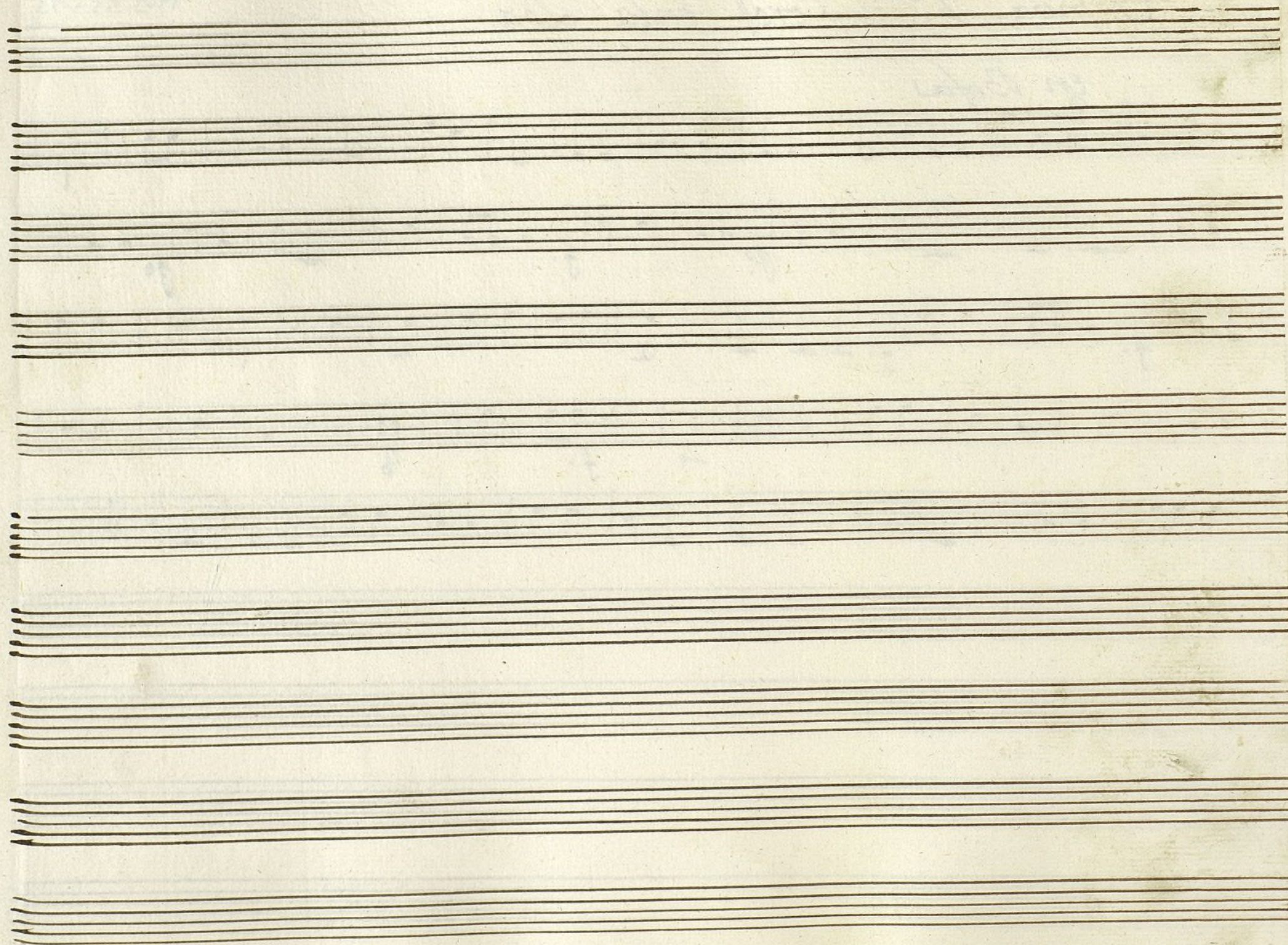


Trompa 2.^a Coroll en la Lea

Mus 33-13

en Befa

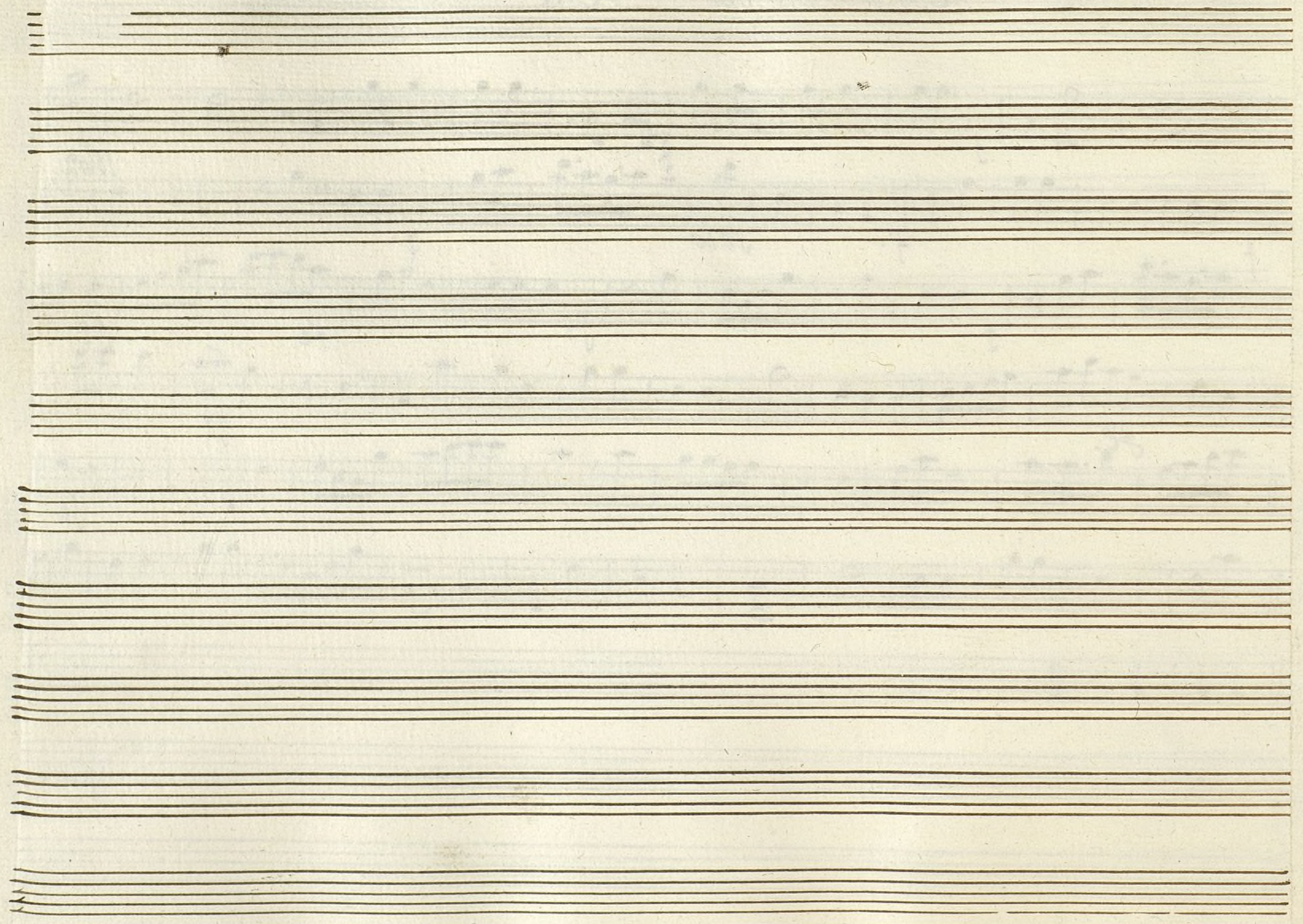




Tapot. Coro en la Loa

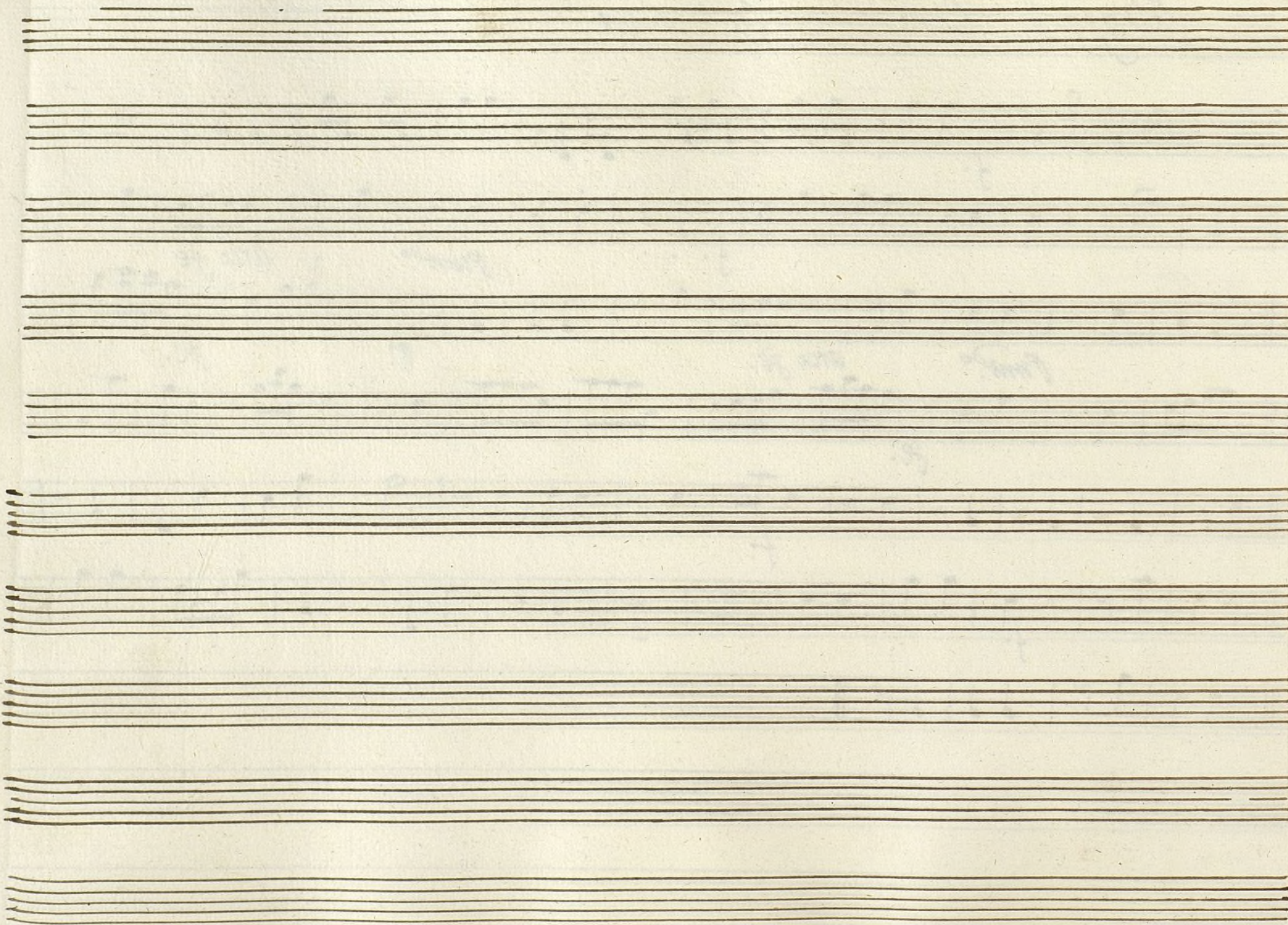
Mus 33-13

Handwritten musical score for 'Tapot. Coro en la Loa'. The score is written on seven staves. The first staff begins with a treble clef, a key signature of one flat (B-flat), and a time signature of 2/4. The music is written in a single system. The notation includes various note values, rests, and dynamic markings such as *f.* (forte), *so* (solo), *po* (piano), and *fe* (fuerza). The score concludes with a double bar line on the seventh staff.



Bajo II. Coro en la Loa

Handwritten musical score for Bajo II. Coro en la Loa. The score is written on seven staves. The first staff begins with a treble clef, a key signature of one flat (B-flat), and a time signature of 2/4. The music is written in a cursive, handwritten style. The score includes various musical notations such as notes, rests, and dynamic markings. The first staff has a forte (f.) marking. The second staff has a forte (f.) marking and a 'punt.' marking. The third staff has a 'punt.' marking and an 'arco fe.' marking. The fourth staff has a 'fe.' marking and an 'arco fe.' marking. The fifth staff has a forte (f.) marking. The sixth staff has a forte (f.) marking. The seventh staff ends with a double bar line. The score is written on aged, slightly yellowed paper.



Bajo II. Coro en la Loa

Mus 33-13

Handwritten musical score for Bajo II. Coro en la Loa. The score consists of ten staves. The first staff begins with a treble clef, a key signature of one flat (B-flat), and a time signature of 2/4. The music is written in a single system. The notation includes various note values, rests, and dynamic markings. The following annotations are present in the score:

- Staff 1: *f.*
- Staff 2: *f.*, *Punt. do*, *arco fe*
- Staff 3: *Punt. do*, *arco fe.*, *p.*, *fe.*
- Staff 4: *f.*
- Staff 5: *f.*
- Staff 6: *f.*
- Staff 7: *f.*

