

Leg.º 12. Num.º 1.

Mus 32-11

1

32-11

Musica en la Comedia

La Mujer firme:

Del S.º Llerena:

Coro:

+

Pastoral

ve nido - a los pre-mios hermo-sa Zaga -

las ve nido - Pas tor ci llos dea quei - tas Co

marcas sea. Ve ri-be el a

plau-so que mai-sea ben ta-ja Can tan-do can

tan do le to-dos el triun fo y la ga-la el

Handwritten musical score for a vocal piece. The notation includes a treble clef, a key signature of one flat (B-flat), and a 4/4 time signature. The lyrics "triunfo y la ga - la" are written under the third staff. The music features various note values, including minims, crotchets, and quavers, with some notes beamed together. There are also rests and a double bar line at the end of the first system.

Handwritten musical score for a vocal piece. The notation includes a treble clef, a key signature of one flat (B-flat), and a 4/4 time signature. The lyrics "Versos, y se Repite:" are written to the right of the staves. The music features various note values, including minims, crotchets, and quavers, with some notes beamed together. There are also rests and a double bar line at the end of the first system.

Versos, y se Repite:

Violin Primero

en la Comedia: la Auser firme:

Coro

se empieza

Pastoral



se repite al segno

Ayuntamiento de Madrid

Violin Primero

En la Comedia la Mujer firme

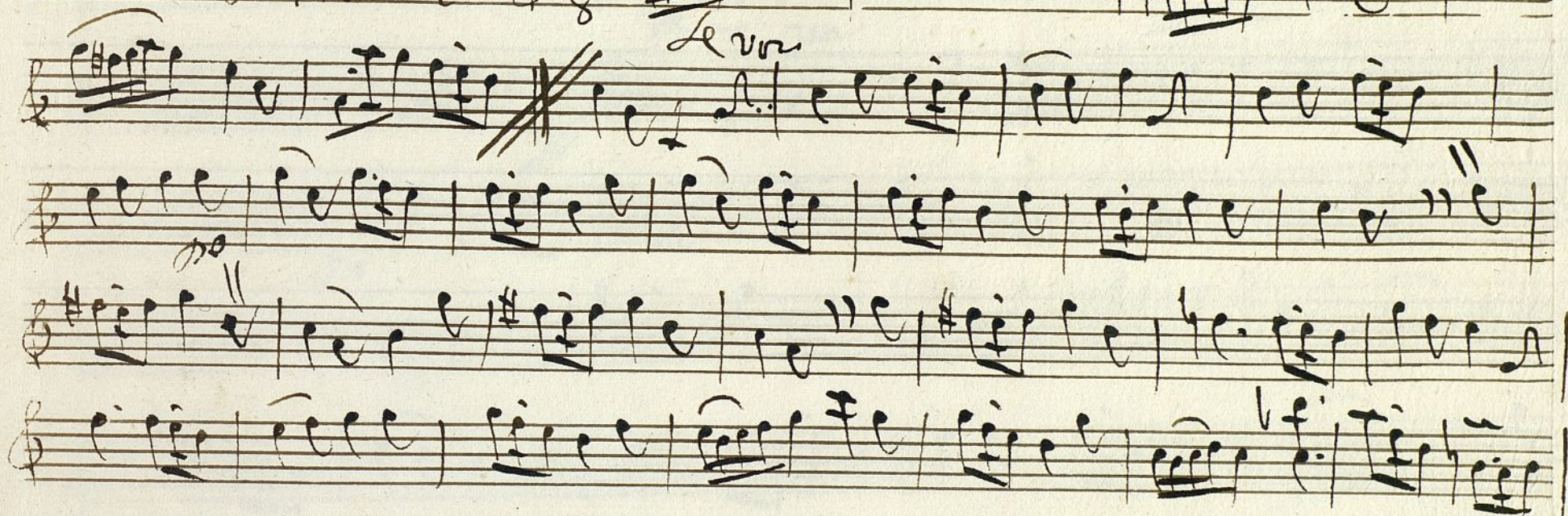
Coro.

Se empieza

Pastoral



Le var



Versos, y se repite al segno

Ayuntamiento de Madrid

Violín Segundo
en la Comedia, la Auser firme.

Coro *Se empieza*
Pastoral & 6/8

va

p

Se sigue al segno

Ayuntamiento de Madrid

Violin Segundo +
en la Comedia, La Mujer firme.

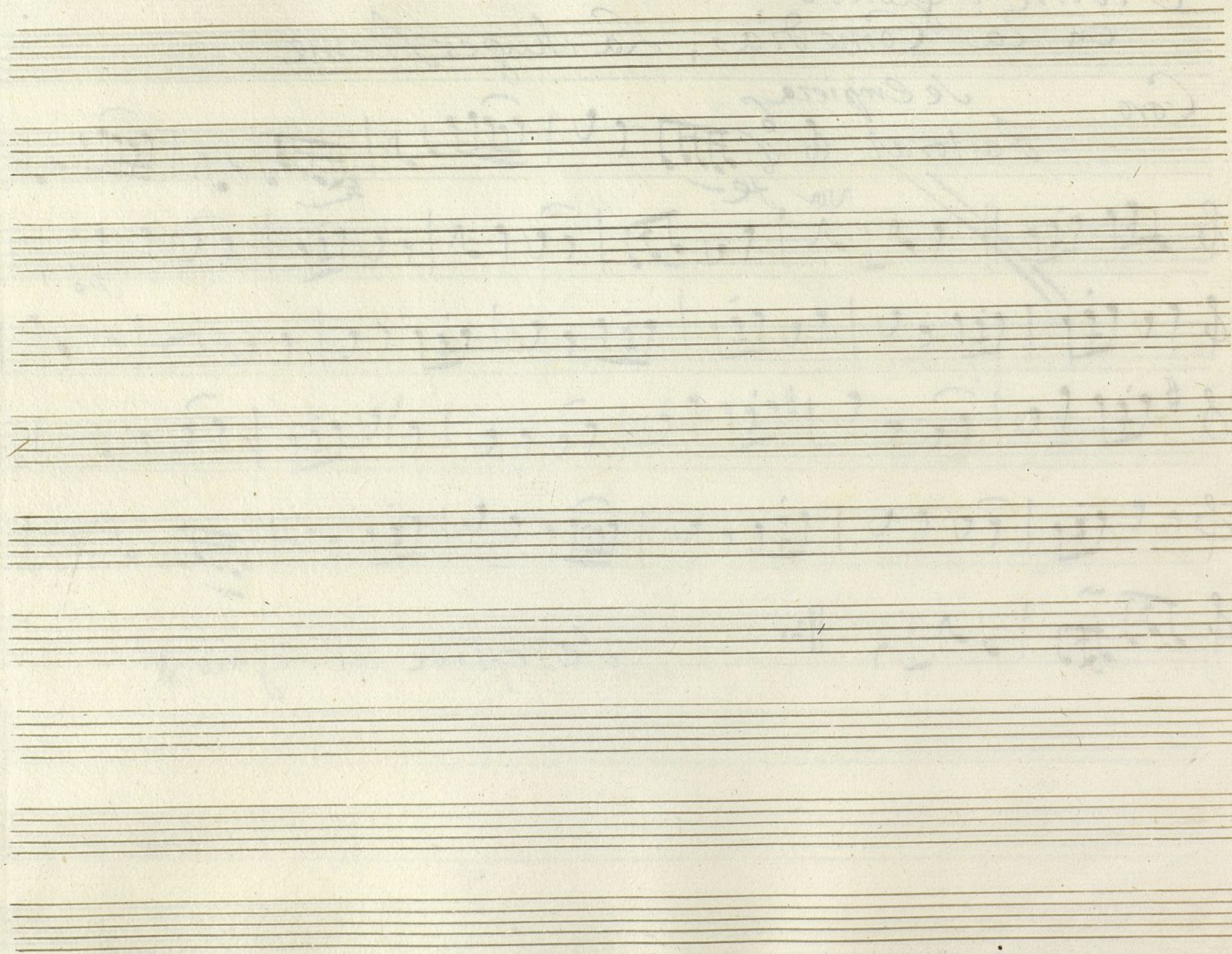
Covo

Se Empieza

Pastoral

vor f.

Levesite al segno x



Ayuntamiento de Madrid

Oboe Primero

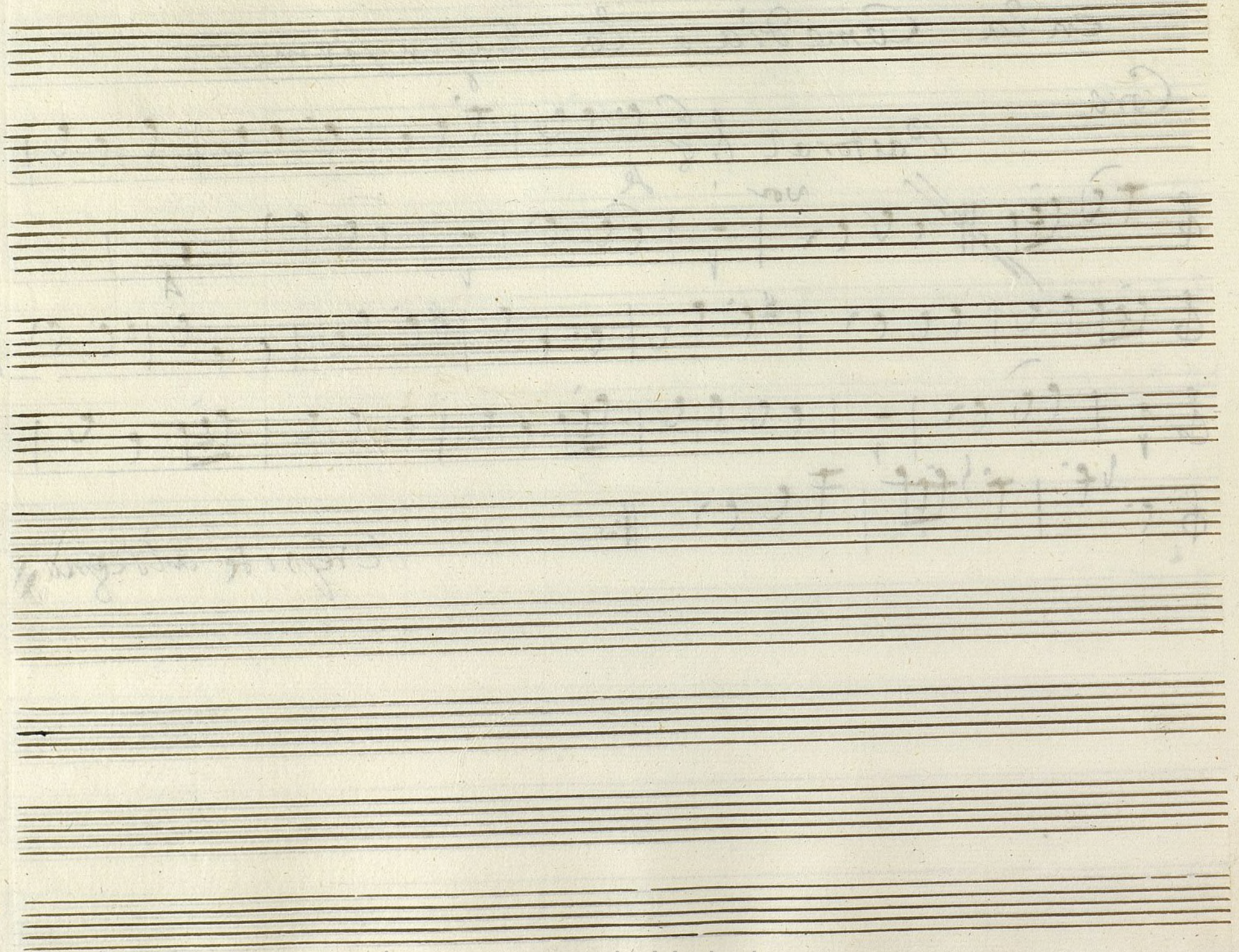
en la Comedia, la Mujer firme

Coro

Pastoral

Handwritten musical score for Oboe Primero, featuring a Coro section with a Pastoral tempo marking. The score is written on five staves with various musical notations including notes, rests, and dynamic markings like 'no' and 'A'. The first staff begins with a treble clef and a 6/8 time signature. The second staff has a treble clef and a key signature of one sharp (F#). The third staff has a treble clef and a key signature of one sharp (F#). The fourth staff has a treble clef and a key signature of one sharp (F#). The fifth staff has a treble clef and a key signature of one sharp (F#). The score ends with a double bar line and a repeat sign.

Se viene al segno x

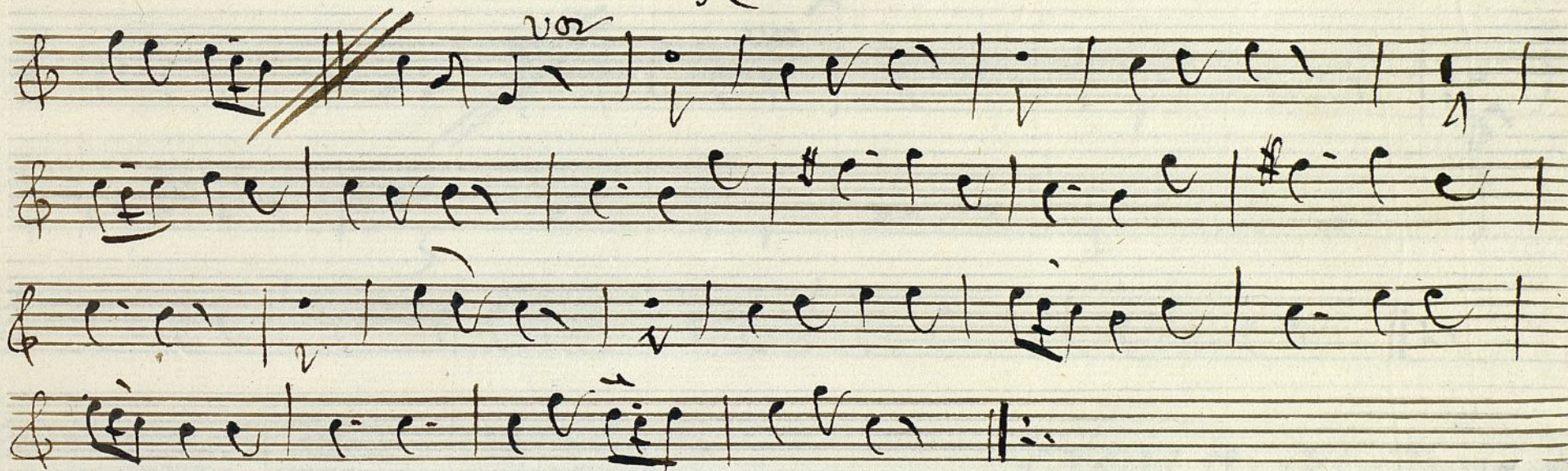


oboe segundo

En la Comedia, la Mujer firme

Coro

Pastoral & 6/8



Se repite al segno

of mages oido

Handwritten musical notation on ten staves. The notation is extremely faint and illegible, appearing as light blue or grey ink. It includes various musical symbols such as notes, rests, and possibly clefs, but they are too faded to be accurately transcribed. The staves are evenly spaced and cover most of the page area.

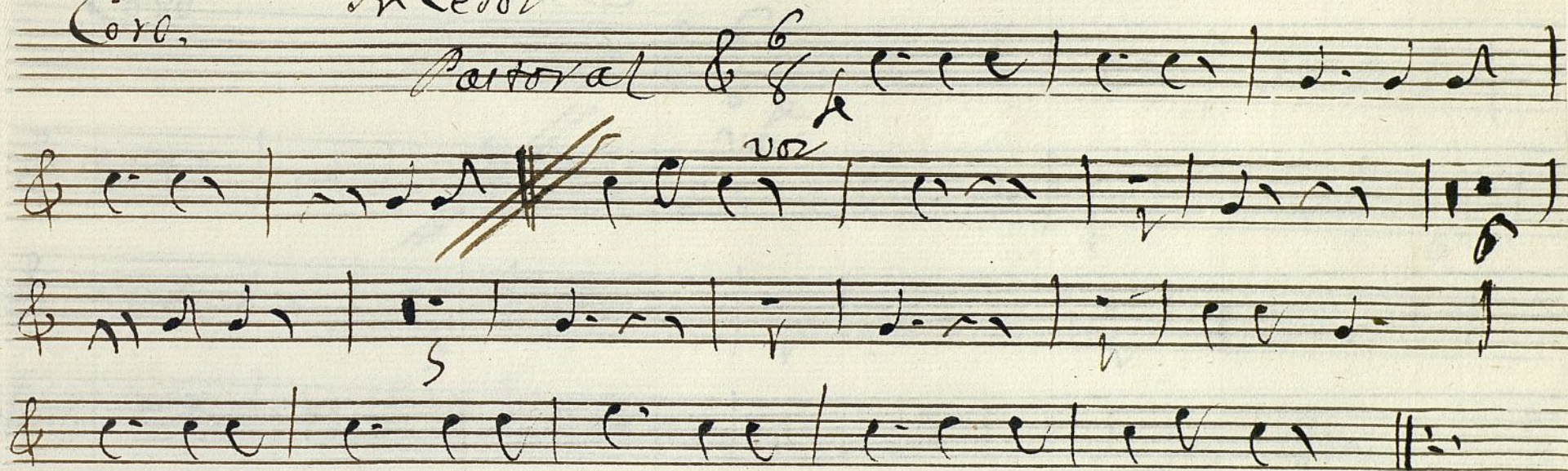
Trompa Primera

en la Comedia, la Mujer firme:

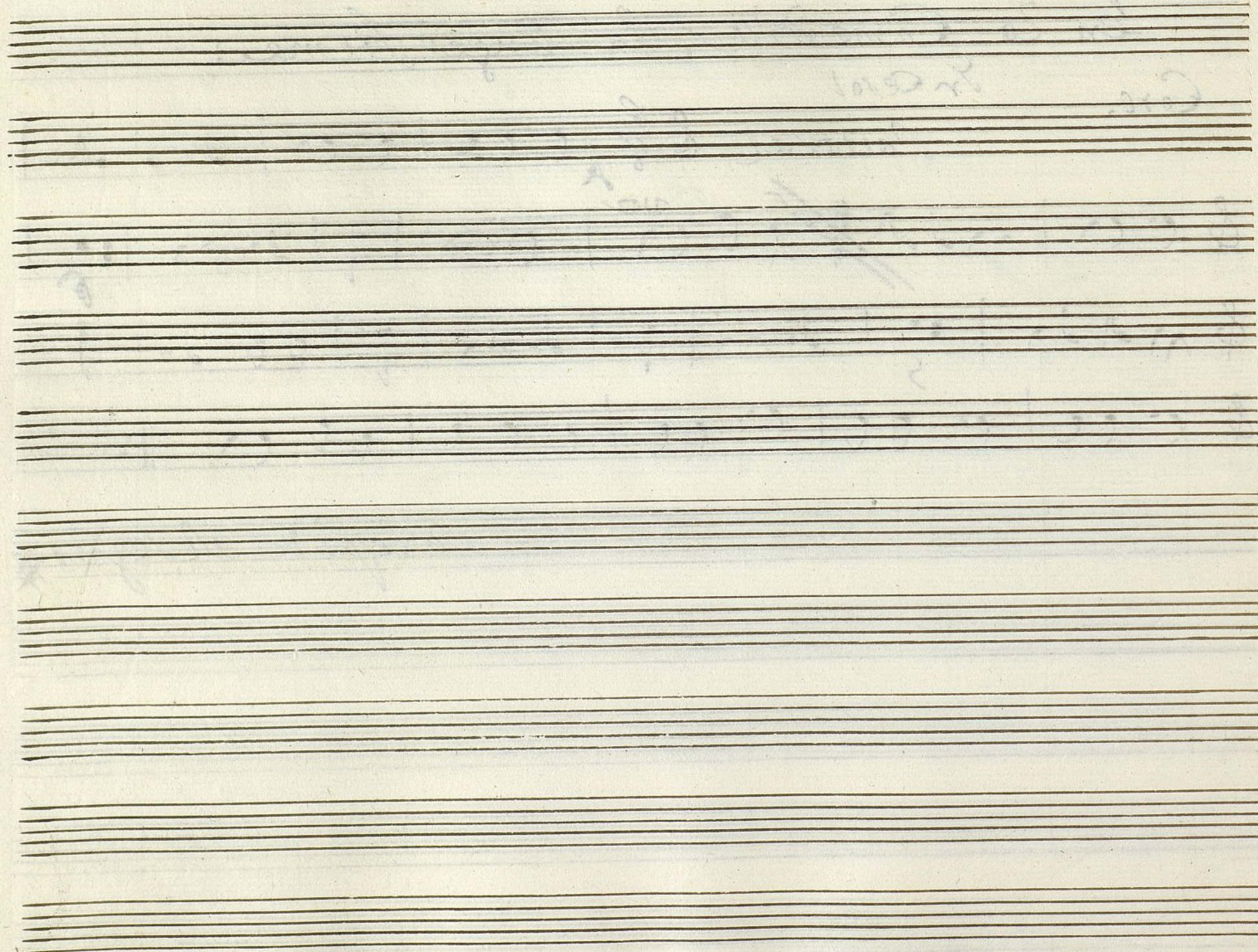
Coro.

In Cerol

Pastoral



Adespite al regno



Trompa Segunda +

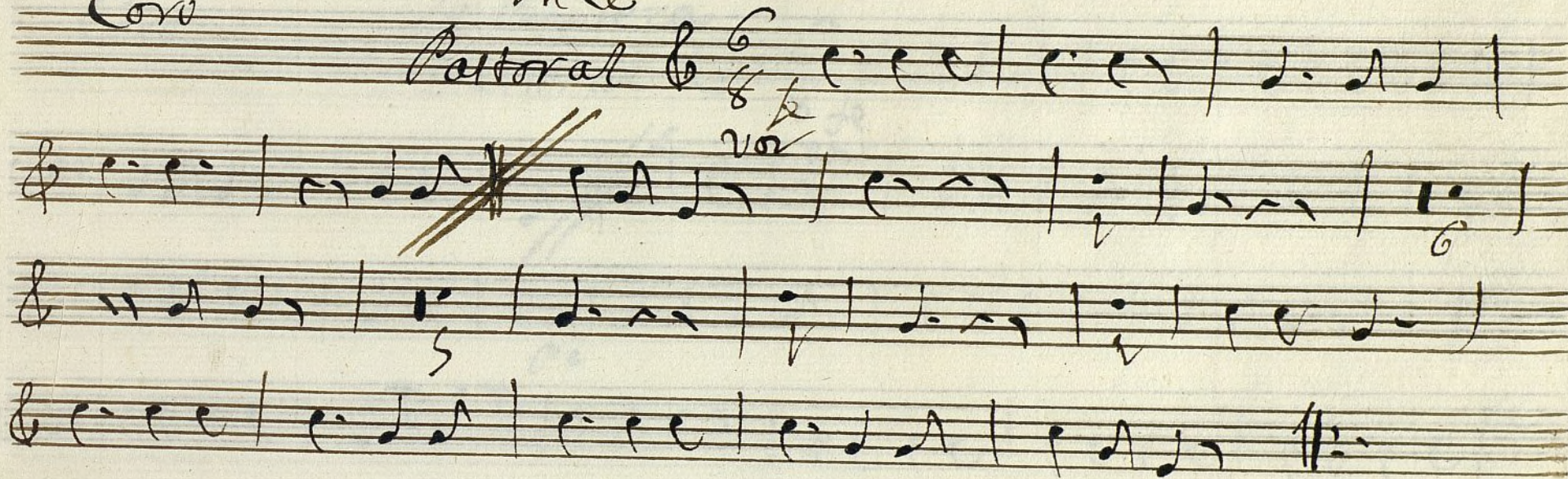
En la Comedia, la Mujer firme

Coro

In ce

Pastoral

6/8
vo



*Se repite al segno **

Forma de los +

Handwritten musical notation on 12 staves. The notation is extremely faint and illegible, appearing as light blue or grey ink. It includes various symbols such as notes, rests, and bar lines, but the specific details cannot be discerned.

Contrabajo

En 2a Comedia: la mujer firme:

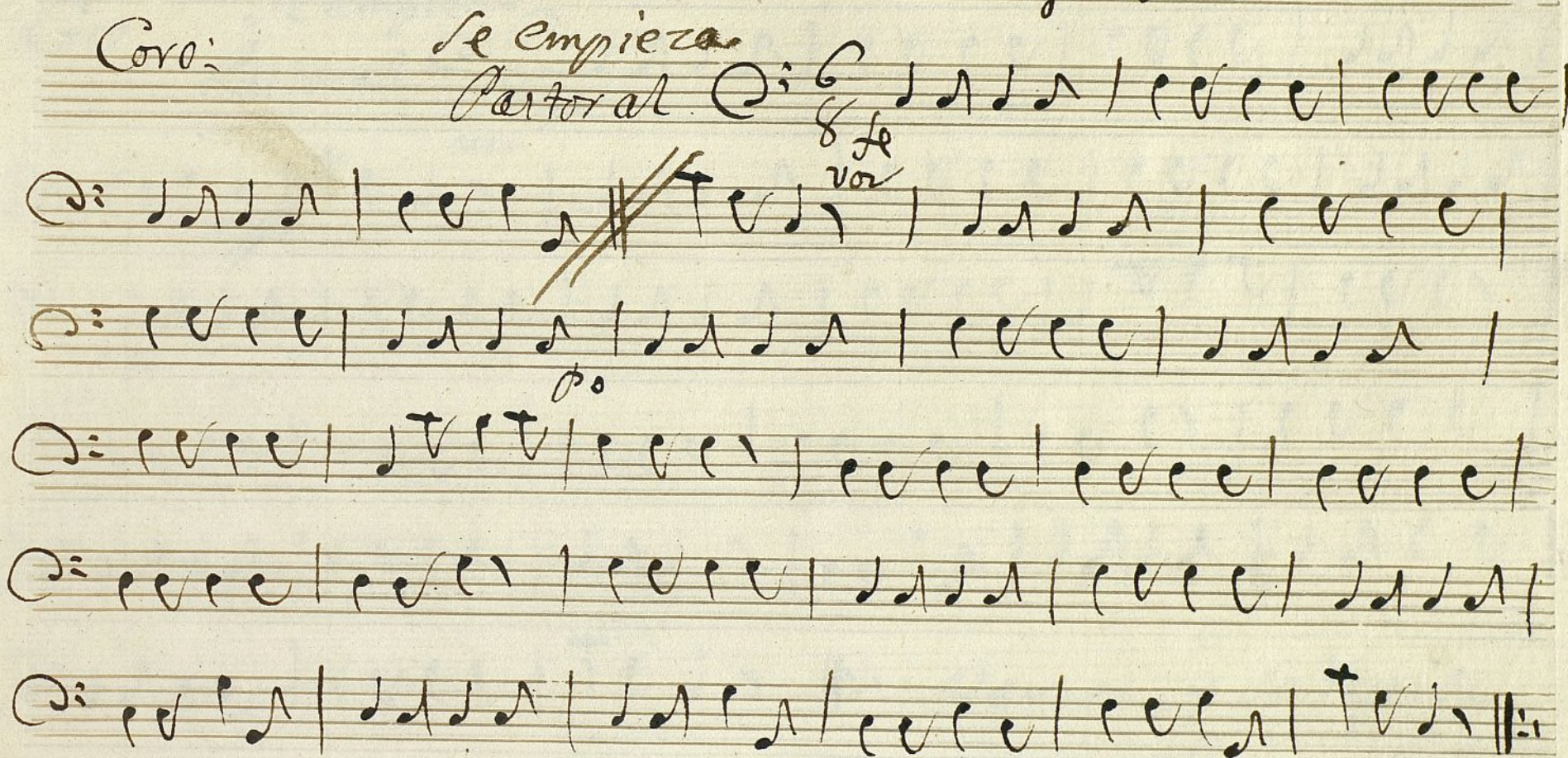
Coro:

Se empieza

Pastoral

6/8

Se
voz



Se repite al segno

Ayuntamiento de Madrid

Parte de Clave +
en la Comedia; La Mujer firme;

Coro se empieza

Pastoral $\text{C}: 6/8$

$\text{C}: 6/8$

$\text{C}: 6/8$

$\text{C}: 6/8$

$\text{C}: 6/8$

$\text{C}: 6/8$

$\text{C}: 6/8$

Versos, y se repite

al Segno ~~x~~ hasta
que se entran

Ayuntamiento de Madrid