

Mus 36-2

Mus 36-2

+

La

De Empezar temporada

//

Pues nuestros afectos

1777

//

Coro.

Pastoral

Alleg.^{ro}

Handwritten musical score for a Coro (Chorus) piece, titled "Pastoral" and marked "Alleg.^{ro}". The score is written on ten staves. The first three staves are for the Coro, and the remaining seven staves are for the vocal parts. The music is in G major (one sharp) and 6/8 time. The lyrics are written below the vocal staves.

Pues nuestros afectos Constanes yn flama la Plazida an

Handwritten musical score for three systems of three staves each. The lyrics are in Spanish and describe a scene of joy and dance. The notation includes various note values, rests, and bar lines. The lyrics are written in a cursive hand.

rorra que tanto a ne laban todo sea feo rejos

Musica y danza musica y dan-za que tan

Bien son obsequios las Locuras movidas del Ves

peto y la Constancia

Se Neppite al segno #

Coro /

Preludio /

Alleg^{ro}

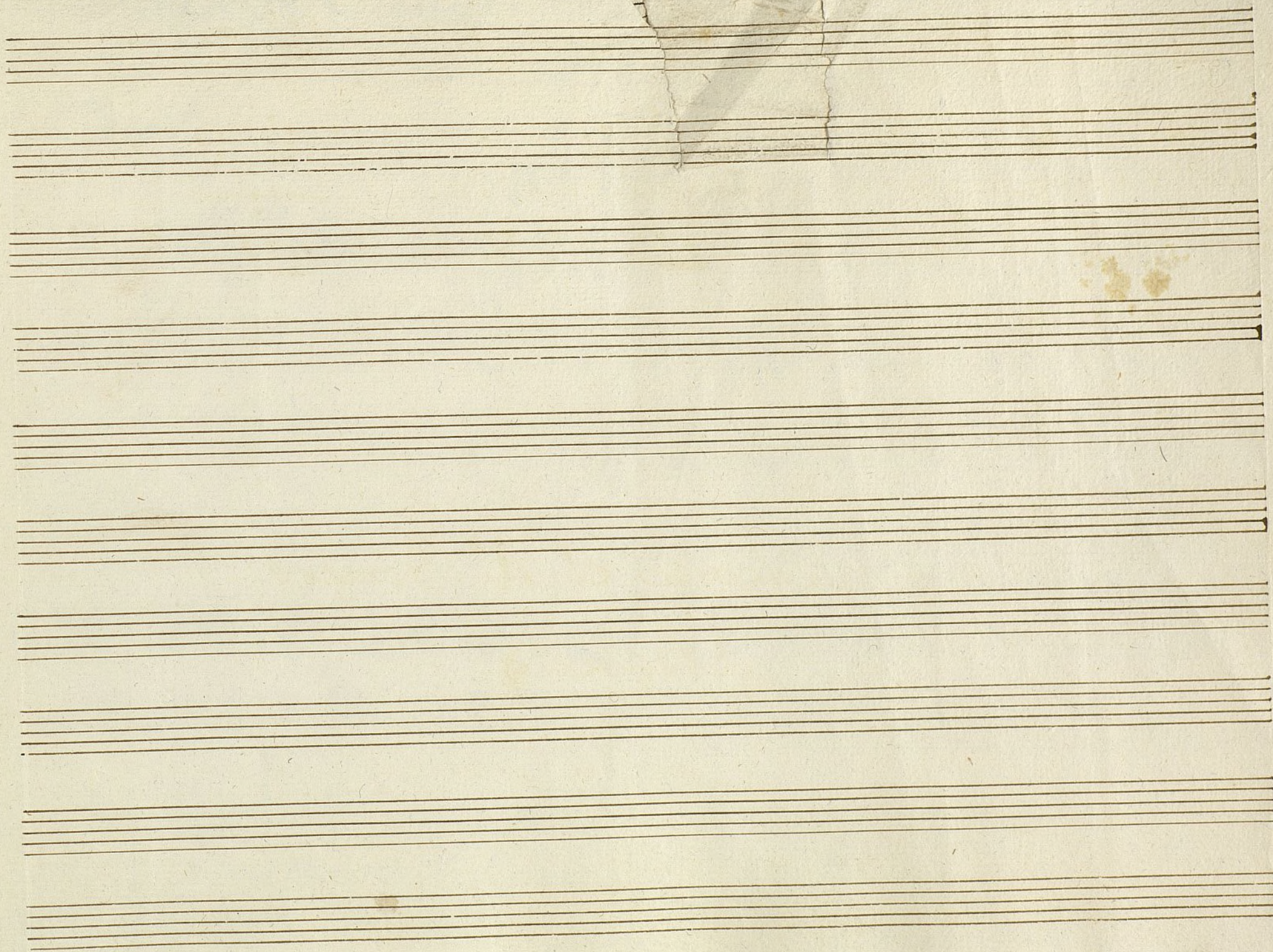
ve

nid fa vo re zidos al templo donde os llaman

Numeng! Recon pensa los a Afanes y el merito con

Vida Conguirnalda Conguirnalda

Se repite el 4.º Primero
allegro ♩ .



Ayuntamiento de Madrid

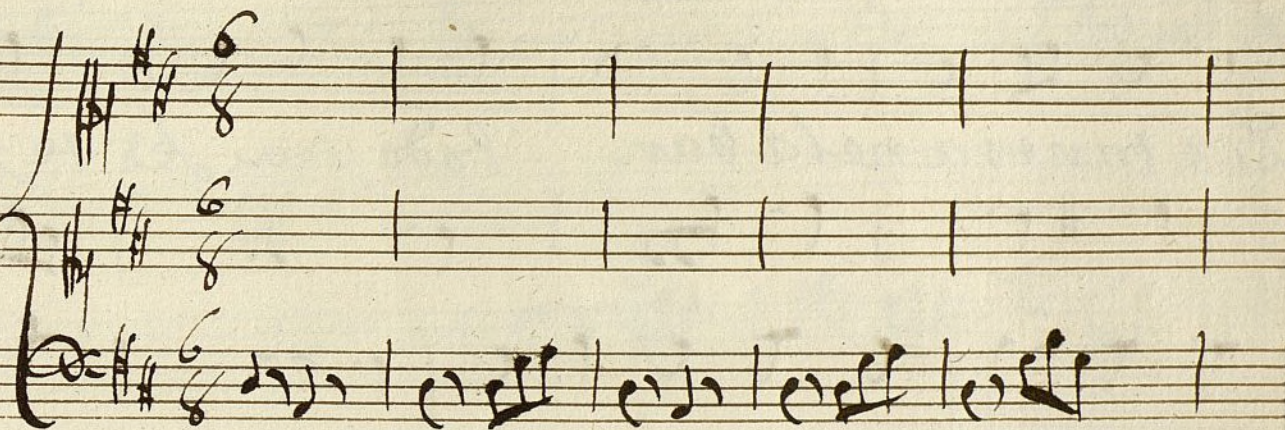
Parte de Clave y

MUS 36-2

~~Loa~~

Coro.

Alleg^{ro} Pastoral



Handwritten musical notation for the vocal parts, including lyrics in Spanish. The notation is written on five staves, with the lyrics written below the notes. The lyrics are: "Pues nuestros a", "lectos Constantes Inflama la Pazida aurora".

Pues nuestros a

lectos Constantes Inflama la Pazida aurora

The image shows a handwritten musical score on aged, slightly stained paper. It consists of three systems of staves, each with a vocal line and a piano accompaniment line. The lyrics are written in Spanish and are interspersed between the staves. The handwriting is in a cursive style typical of the 18th or 19th century.

System 1:
 The first system contains two staves. The lyrics are: "Que tanto a nelaban todo sea los rejos musica y". The piano part features a simple harmonic accompaniment with eighth and sixteenth notes.

System 2:
 The second system also contains two staves. The lyrics are: "Danza q. tan bien son obsequios". The piano part continues with similar rhythmic patterns.

System 3:
 The third system contains two staves. The lyrics are: "Las Locuras movidas del Repeto y la Constan". The piano part concludes the piece with a final cadence.

At the bottom of the page, there are several empty staves, suggesting the music continues on the next page.

cia *Se nequit al legno*
 Coro. *Alleg.^{ro}*
Venid favore
 zidos al templo donde os llaman Numen g.^o Reconpensa los a

lanes al merito con vida Conguirnalda Conguirnal

da

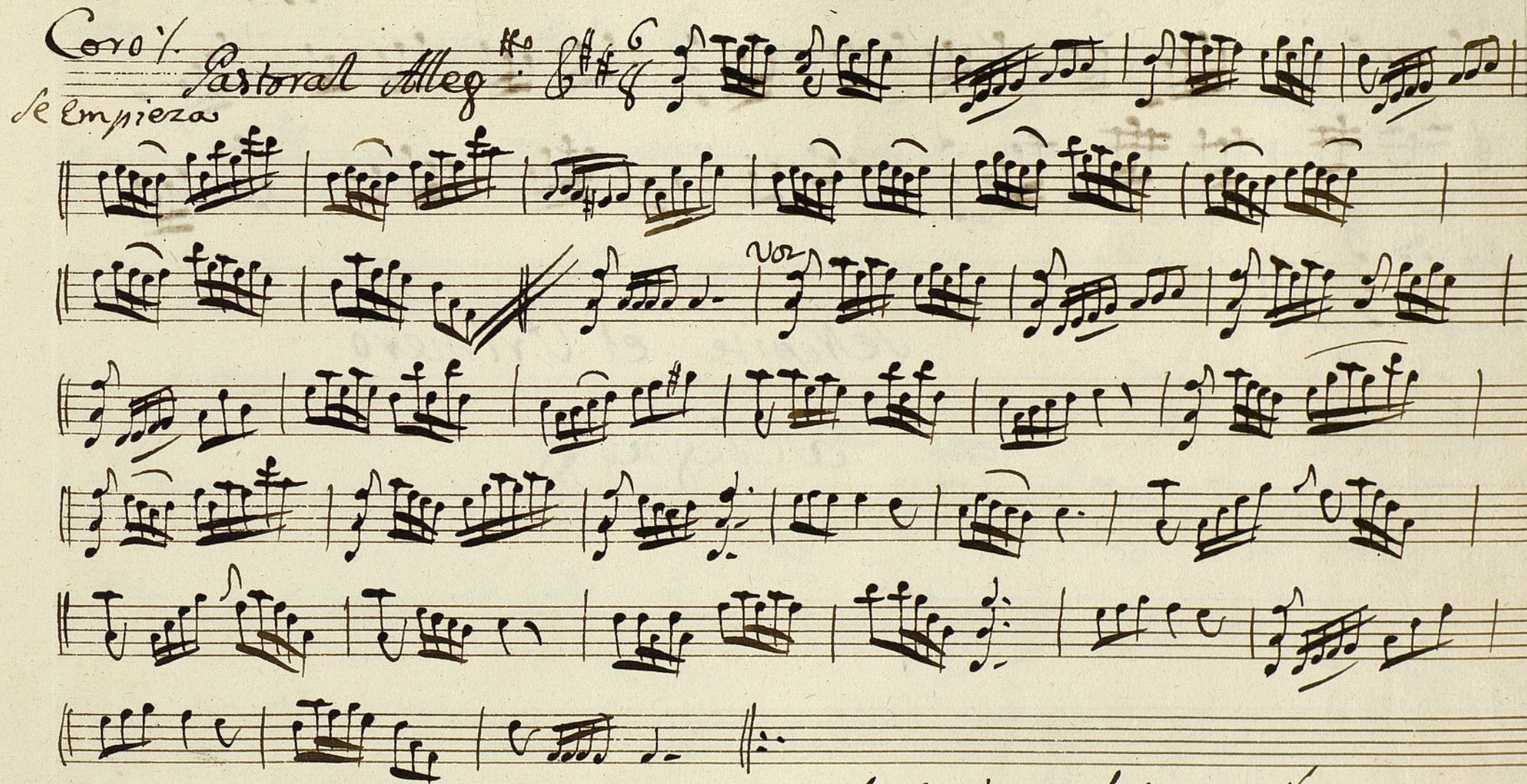
Se Repite el Primero, al Segno

Violin Primero %

Mus 36-2

Loa

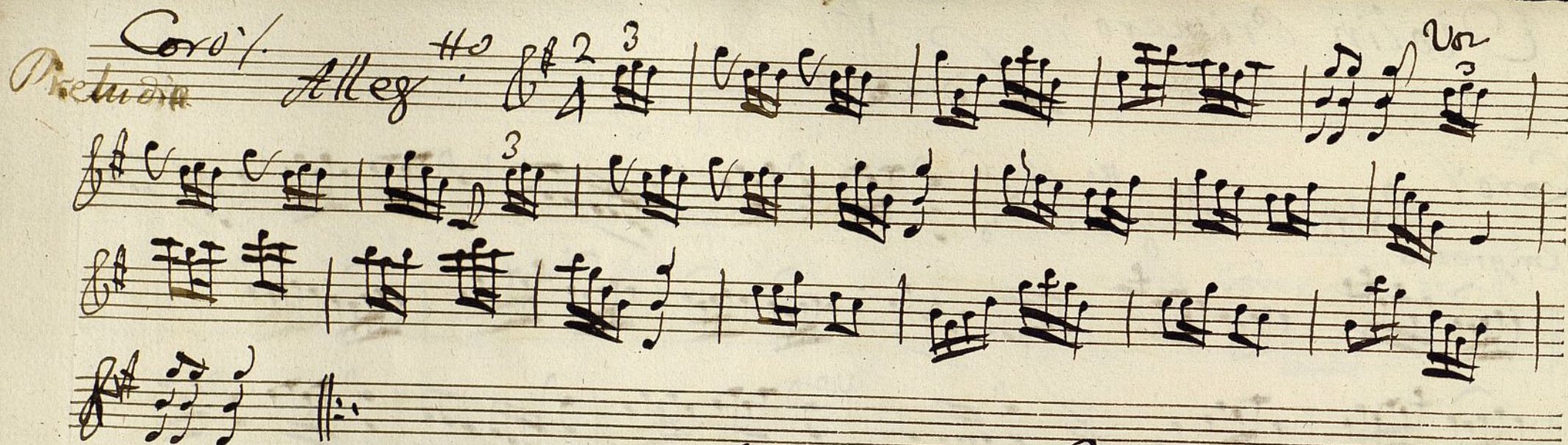
Coro %
Pastoral Alleg^{ro}
Se empieza



Se Repite al segno X

Volti

Coro/
Preludio Allegro H^o $\frac{2}{4}$ $\frac{3}{4}$



Se Repite el Primero
al segno H^o

Violin segundo.

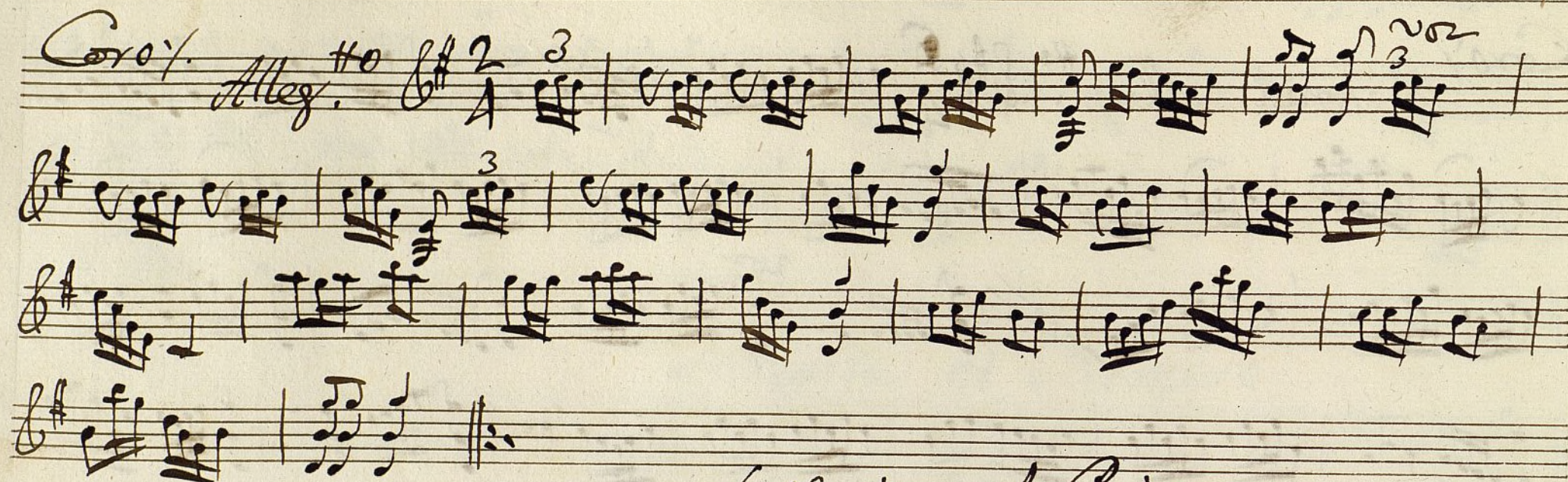
Loa

Coro: Pastoral Alleg. $\#$ $\frac{6}{4}$

Se Repite al segno *

Volte

Preludio



Se Repite el Primero.

Desde el Segno ~~X~~

Violin segundos.

Loa

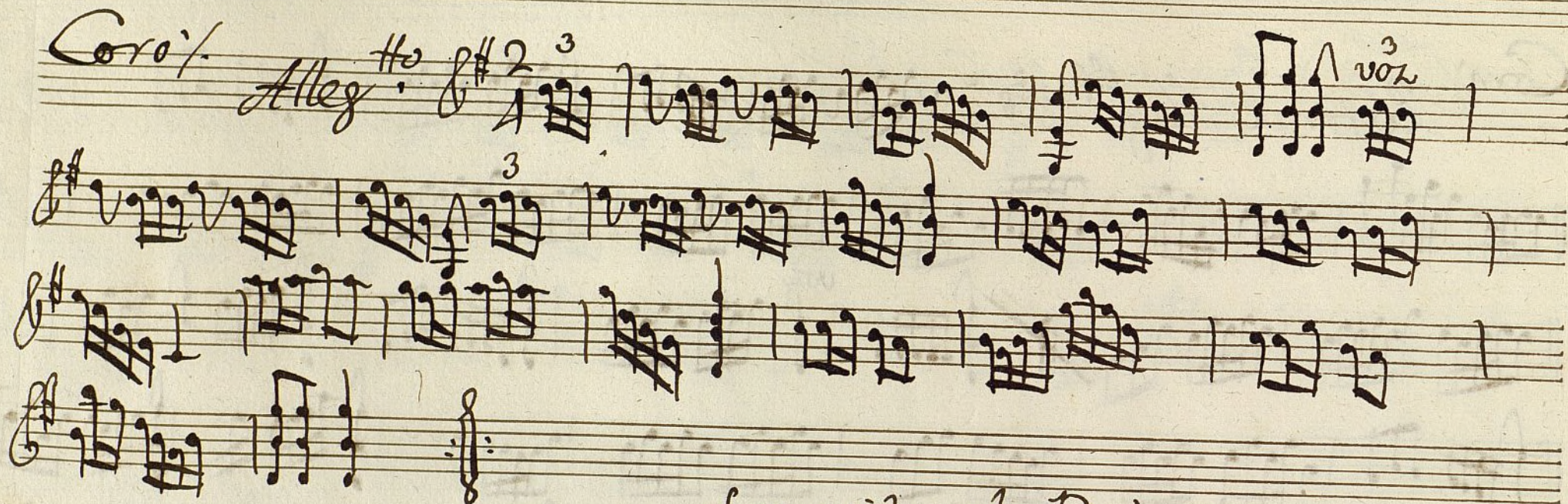
MUS 36-2

Coro: Pastoral Alleg^{ro}



Se repite al segno X

Preludio



Se repite el Primermo.

Desde el Segundo X.

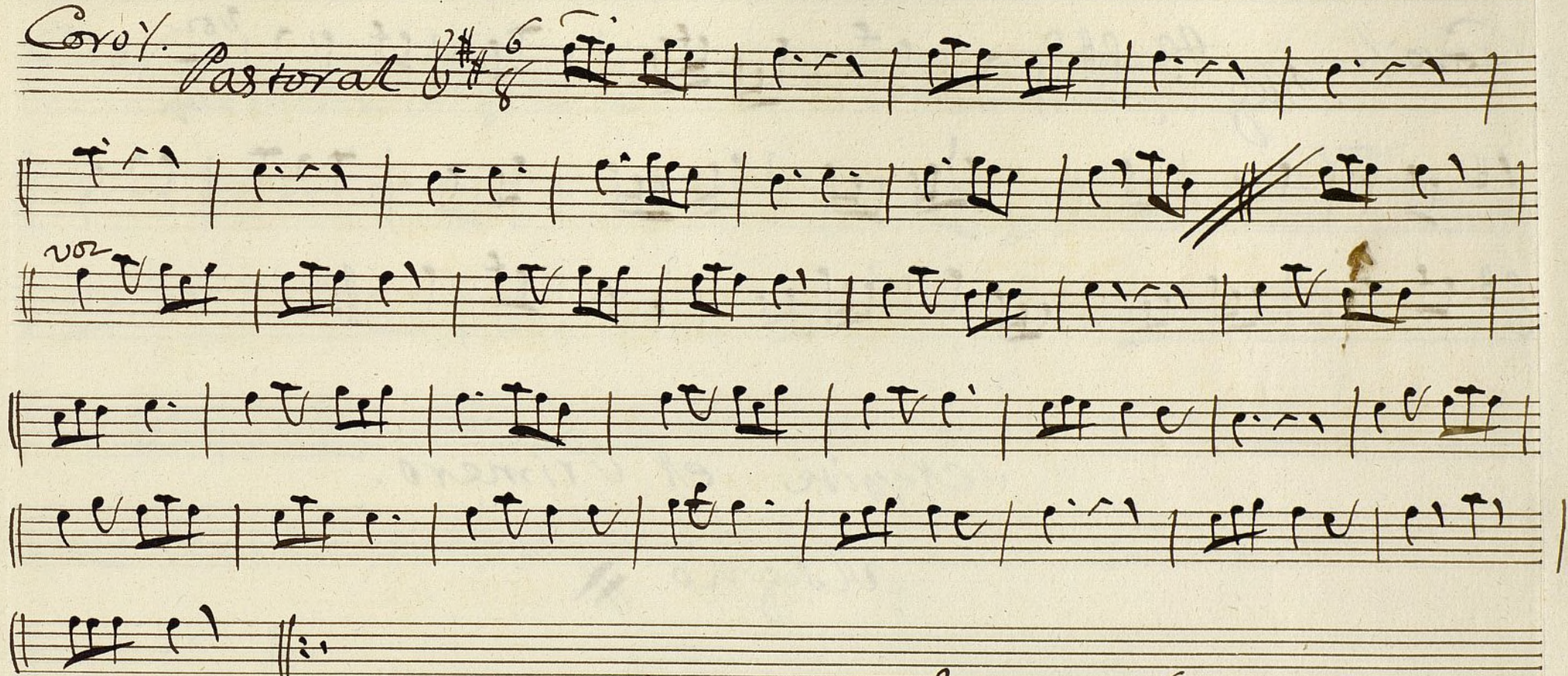
Oboe Primero

Mus 36-2

Loa

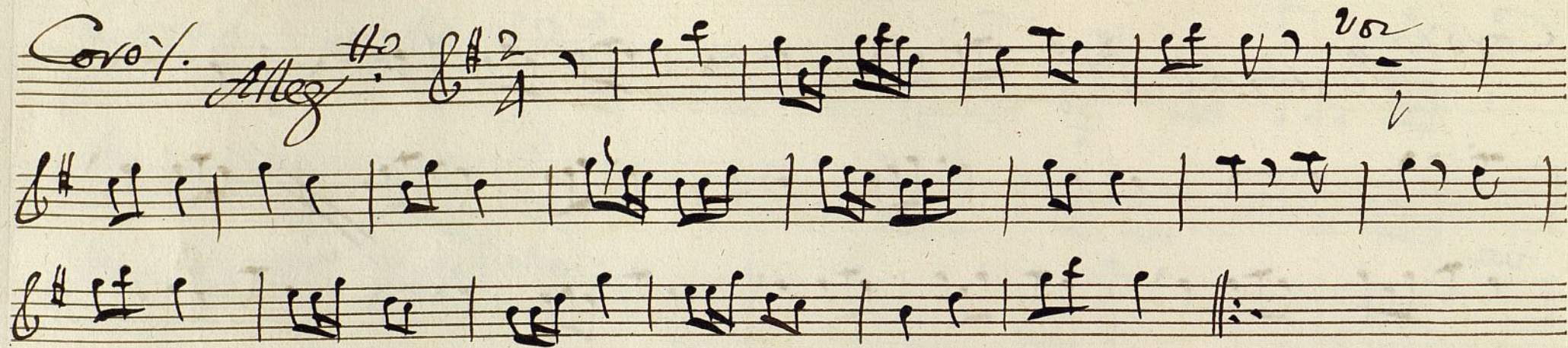
Coro.

Pastoral



Se Repite al segno #

Volti



Se repite el Primero.

Adagio H^2

Trompa Primera

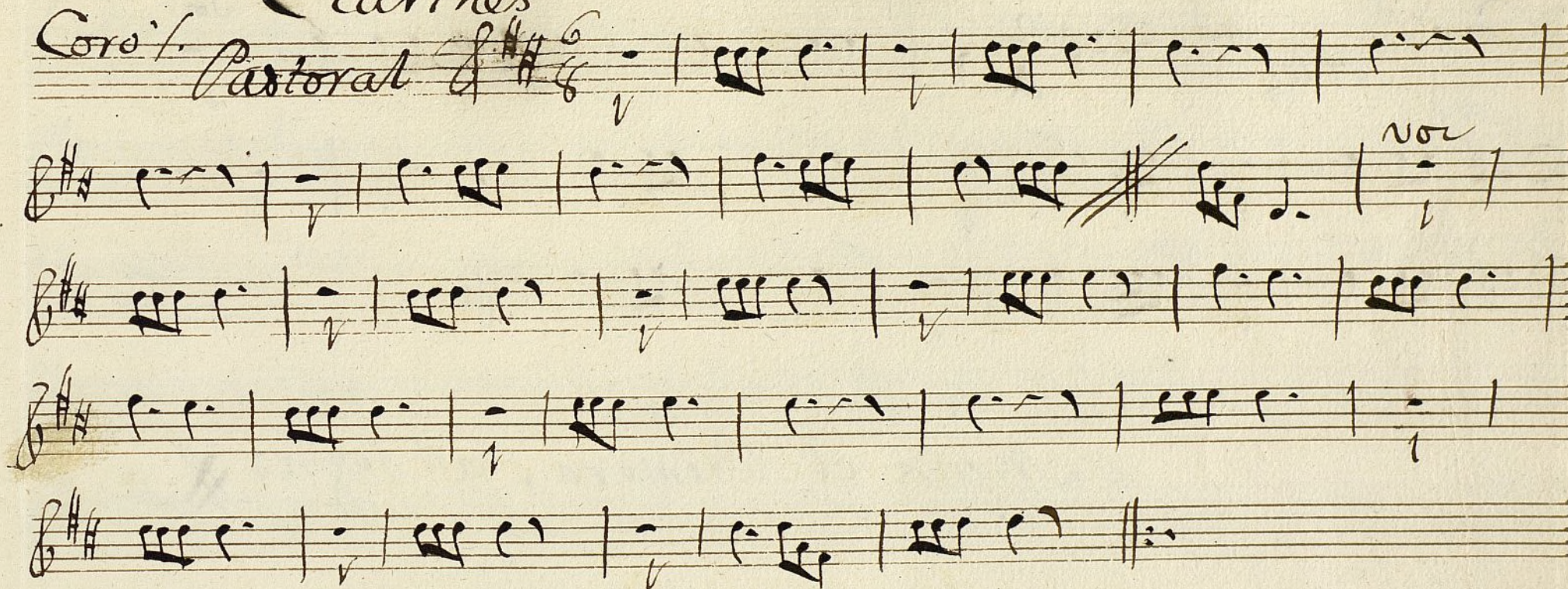
Mus 36-2

Clarines

Loa

Coro.

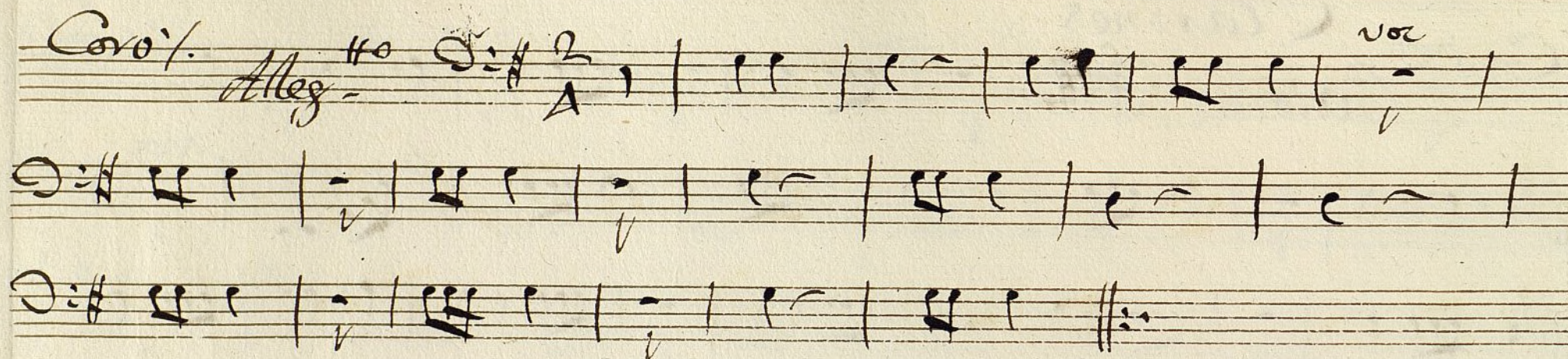
Pastoral



Se Repite al Segno #

Volte

Coro. Alleg. $\text{no } \text{D}:\sharp \frac{2}{A}$ ^{voz}



Se Repite el Primero, al segno **X**

trompa segunda

MUS 36-2

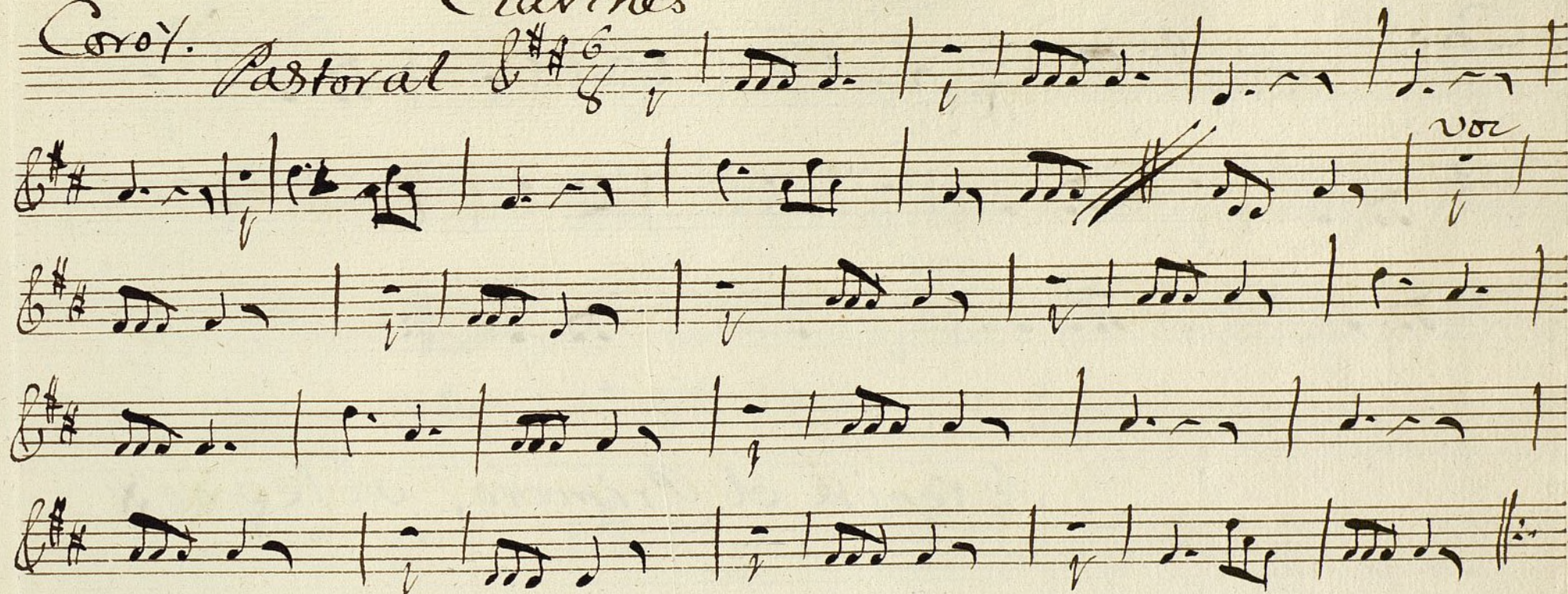
Loa

Coro.

Clarines

Pastoral

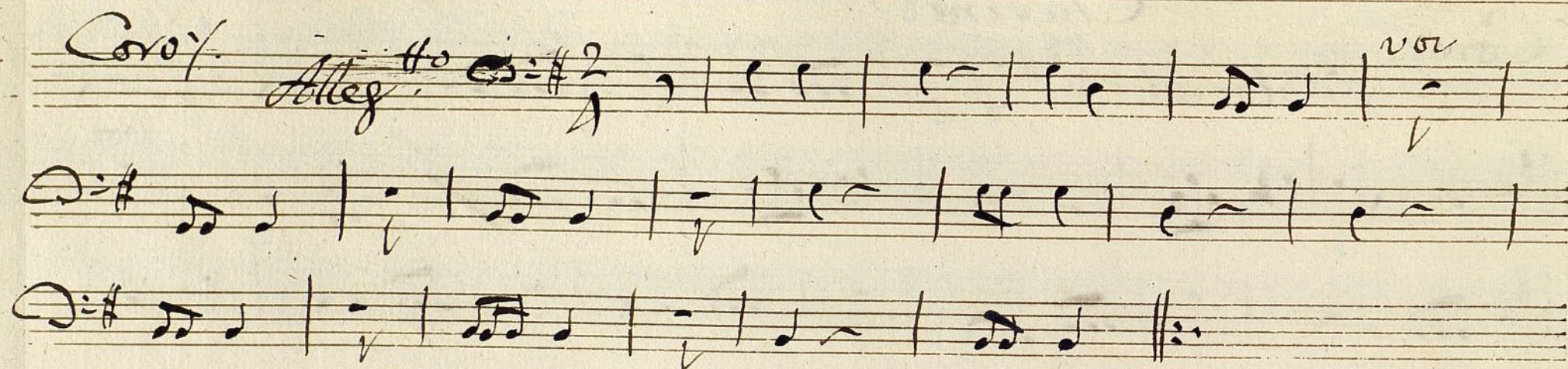
6/8



Se repite al segno #

Volte

Coro. Allegro $\text{C}=\sharp$ $\frac{2}{4}$ *no*

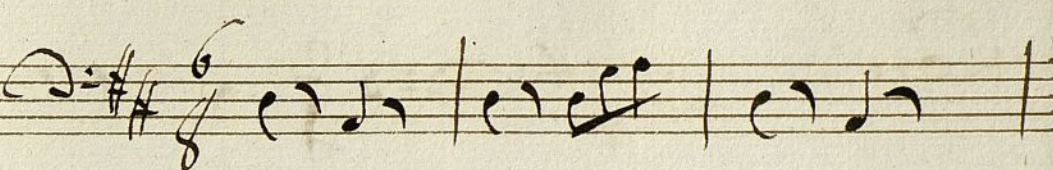


Se repite el Primero, Allegro \sharp

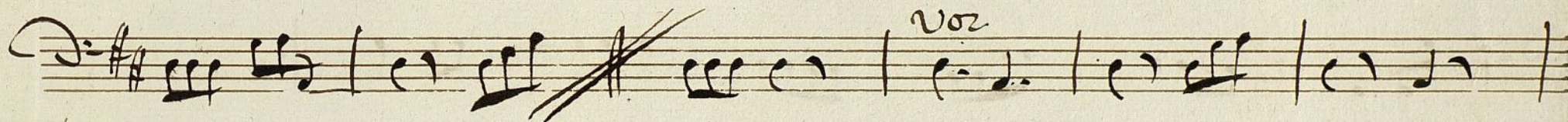
Contravaso;

Loa

MUS 36-2

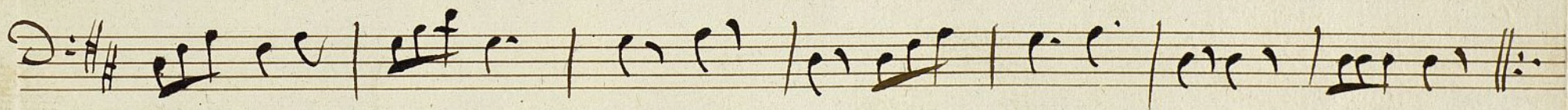
Coro: Pastoral Alleg^{ro} 










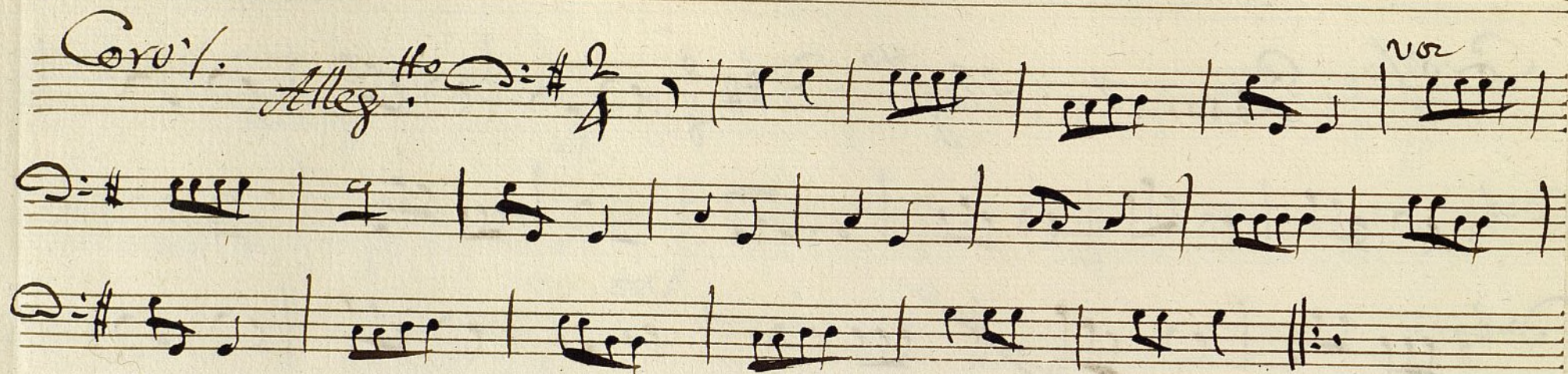


Se Repite al segno 

Volte

Preludio

Coro! Alleg.^{ro} $\text{D}=\sharp$ $\frac{2}{4}$



Se Vepite el Primero; al Segno \sharp