

Mus 35-22

+

Musica de la Loa

Dia de S.<sup>ta</sup> Leocadia:

→ El Arbol de Clodoveo:

Del S.<sup>r</sup> Laverna

1795

Ayuntamiento de Madrid

1200026625



Coro

triples

tenores

Bajos

Allegro

Coro

nemos al di ciembre

Coro

nemos



Duo

2

Con a tri bu tos de Abril

mes el

al Di ciem bre Con a tri bu tos de Abril

So lo nos dis pen sa las Ven tu ras mil a mil



*Solo*

las ven-tu-ras mil a mil

Puer el

Puer el

Le

Solo no dispen-sa las ven-tu-ras mil a

Solo no dispen-sa las ven-tu-ras mil a





mil las ven turas mil a mil mil a mil



mil las ven turas mil a mil mil a mil



Versos





Copla

Al mismo ayre

Solo

na flor may her mo - sa

del Yspa no suelo quer nuer tro Con suelo

y fe li ci dad quer nuer - tro Con

sue lo y fe li ci dad



Coro:

All.<sup>o</sup>

Corred Nacio

Corred Nacio na les

na les Na cio na les Ve nid ad mi



Venid la admirar Corred Nacionales venid la admi  
 rar Venid la admirar Corred Nacionales venid la admi  
 rar Corred Nacionales venid la admirar ve



nid la ad mirar ad mi'rar

nid la ad mirar ad mi'rar

Voces y se Repite //

y luego el Coro 1.<sup>o</sup>

al segno X

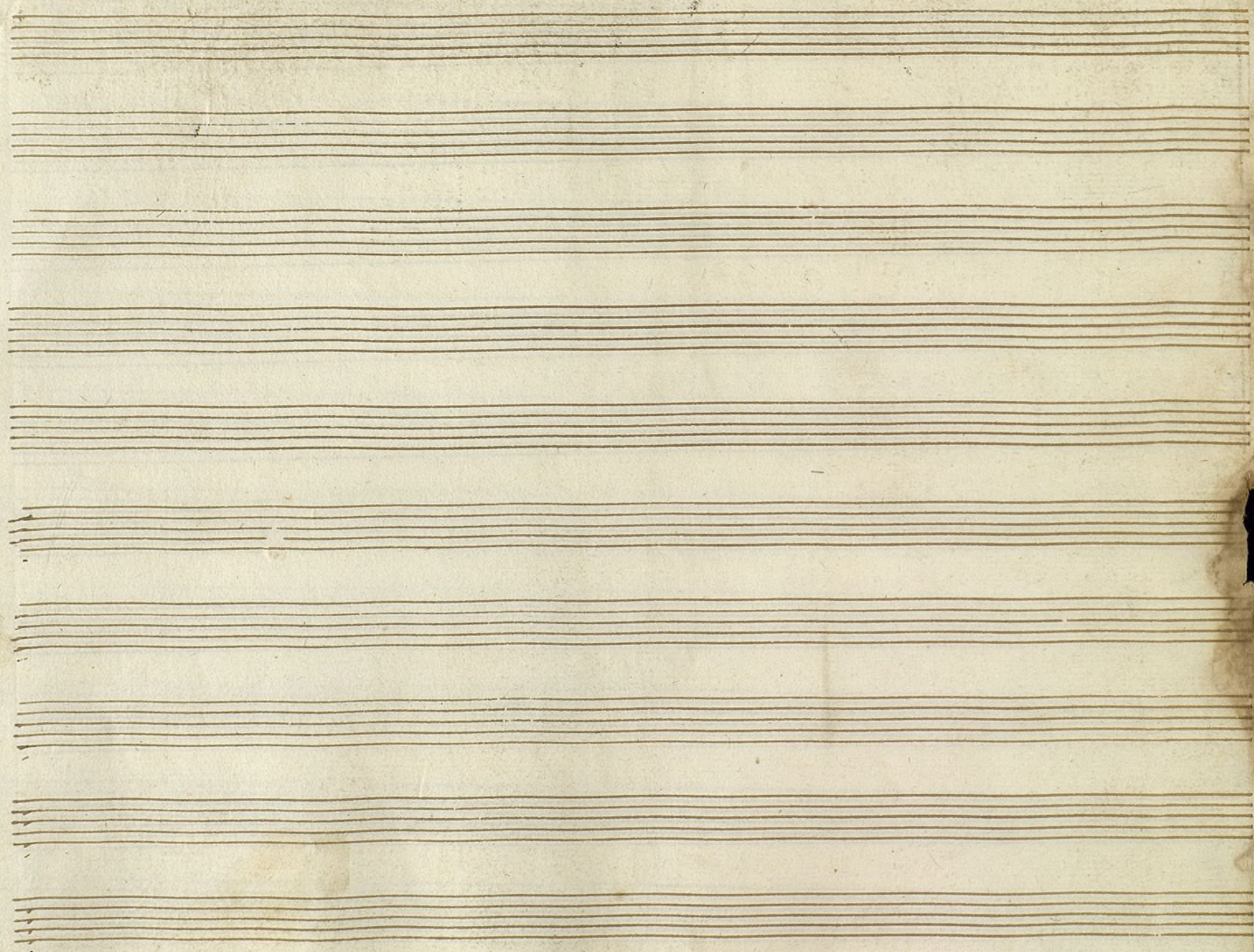


Ayuntamiento de Madrid









Ayuntamiento de Madrid



t

MUS 35-22

1

Musica de la Loa Para el dia de 5.<sup>ta</sup> Pascadia

// el Arbol de clodoveo. //

Coro // Triplet

Tenores.

Baxos.

All.<sup>o</sup>



Coro nemos al Diciembre

Coro nemos

Duo

Con atributos de Abril — pues el

al Diciembre con atributos de Abril.



solo noj di pensa las venturas milamil

solo.

Las ven turas mil - amil

Pues el

Pues el



solo noj dis penia las ven turas mil a

solo noj dis penia las ven turas mil a

mil las ven turas mil amil mil amil

mil las ven turas mil amil mil amil



*Versos.*

*Coplas.*

*Al mismo aire*

*solo.*  
La flor mas her mo — sa del Es pano

*po.*  
suelo q' es nues tro con suelo y





|| Coro ||





Handwritten musical score for a piece titled "Corred Nacio". The score is written on ten staves, with lyrics in Spanish. The lyrics are: "Corred Nacio na lex mo sa", "na lex mo sa que se pre de ha", "Venid la ad mi rar", and "Corred Nacio". The score includes various musical notations such as notes, rests, and bar lines. The handwriting is in a cursive style, and the paper shows signs of age and wear.



nales venid la ad mi rar Corred Nacio  
na  
nales venid la ad mi rad Corred Nacio

nales ve nid la ad mi rar ve nid la admi

nales venid la ad mi rar venid la admi



*rar ad mi rar —*

*rar ad mi rar —*





Ayuntamiento de Madrid



+

Violin Primero

Loa



# Loa Coro

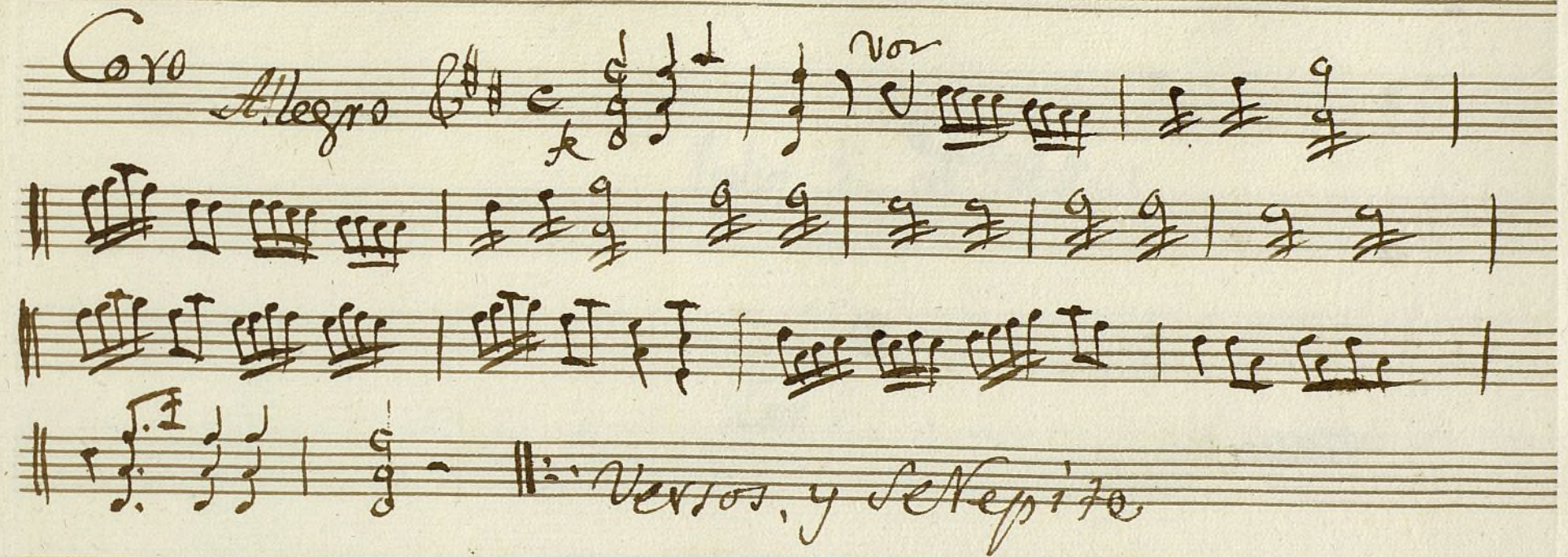
All.<sup>o</sup> Moderado

Handwritten musical score for 'Loa Coro'. The score is written on six staves. The first staff begins with a treble clef, a key signature of one sharp (F#), and a common time signature (C). The tempo marking 'All.<sup>o</sup> Moderado' is written above the first staff. The music features various rhythmic values, including eighth and sixteenth notes, and rests. There are several dynamic markings, including 'f' (forte) and 'p' (piano). A repeat sign is visible in the third staff. The score concludes with a double bar line and a repeat sign in the sixth staff.

Versos



Coro Allegro *no*



Versos, y se Repite

Se Repite el coro 1.<sup>o</sup> al segno #



Ayuntamiento de Madrid



Mus 35-22

Violin 1<sup>o</sup>. en *Do* *Li* *do*

Loa -





Versos y Sigue



~~All.<sup>o</sup> Mod.<sup>o</sup> 90~~

Coro Vo  
fe

Versos. y se Repite

Versos y se Repite del 1.<sup>o</sup> Corde la #1

se Repite el Coro 1.<sup>o</sup> al segno #



Ayuntamiento de Madrid



Violin 1<sup>o</sup> exllo. *Loa*. *Do*

*Loa*



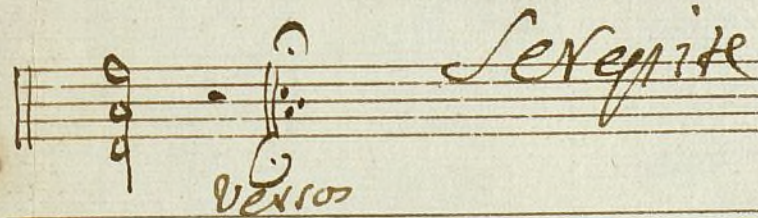
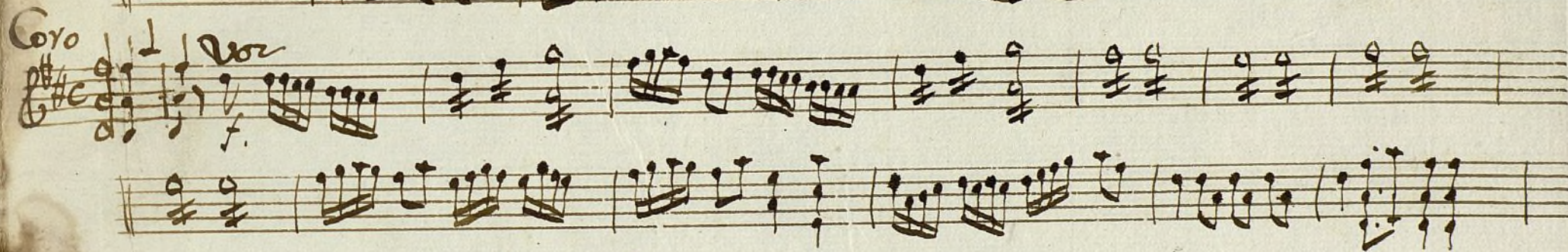
†

Violin 1º en la loa.

Allo.  
Moderato.

Versos y sigue.

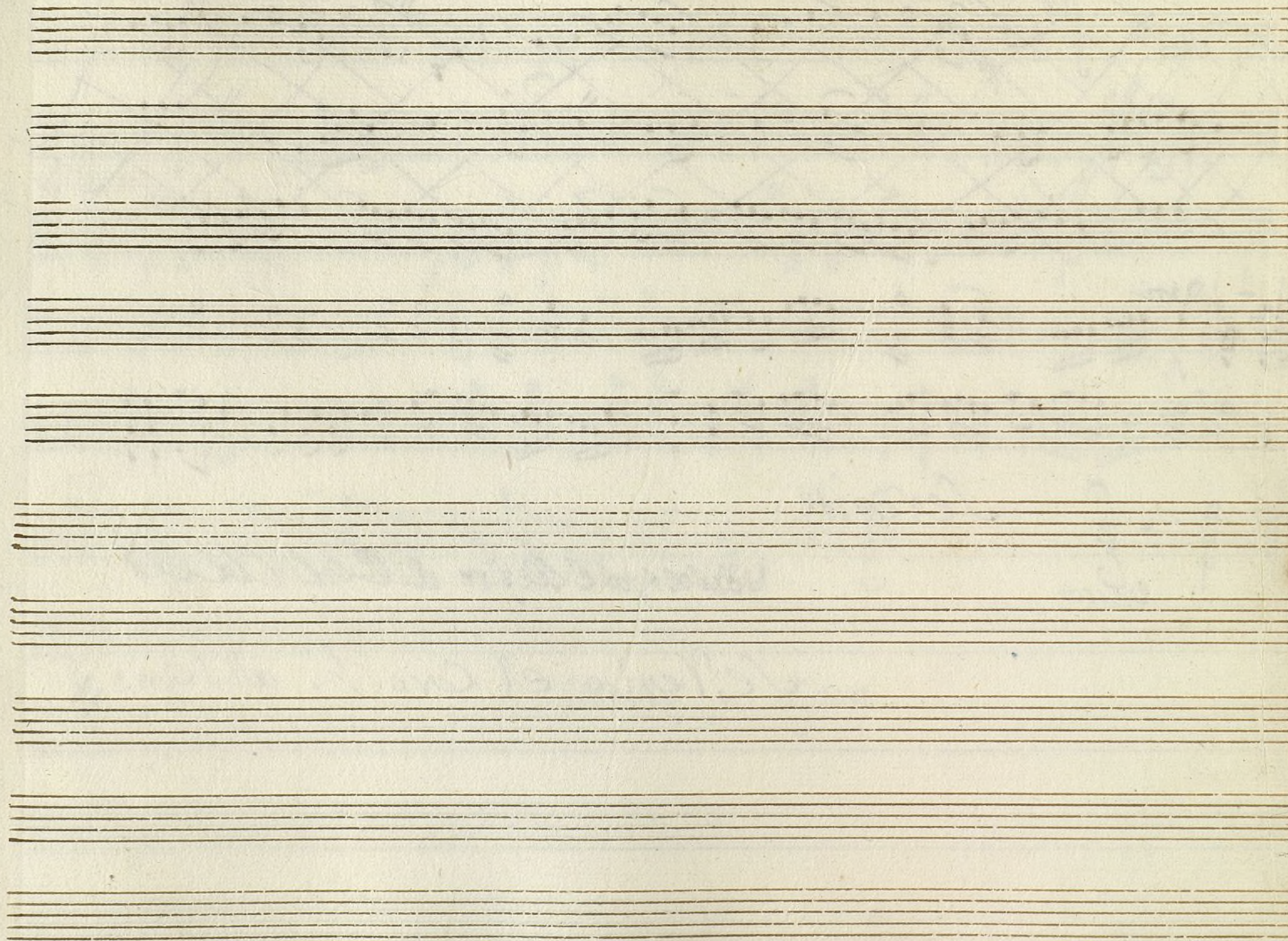




*Se Repite el Coro al Segno*

*Se Repite el Coro 1.º al Segno*





Ayuntamiento de Madrid



Violin 2º *Supli. 2º*

*Loa*



Loa

Coro

Handwritten musical score for a piece titled "Loa". The score is written on six staves. The first staff begins with the tempo marking "Allo. Mod. to" and the time signature "C". The word "Coro" is written above the first staff. The second staff has a large diagonal slash through it, and the word "Voz" is written above it. The third staff has a "p" marking. The fourth staff has a "p" marking. The fifth staff has a "p" marking. The sixth staff has a "p" marking. The score includes various musical notations such as notes, rests, and dynamic markings.

Versos.



*Allo. No. 20*

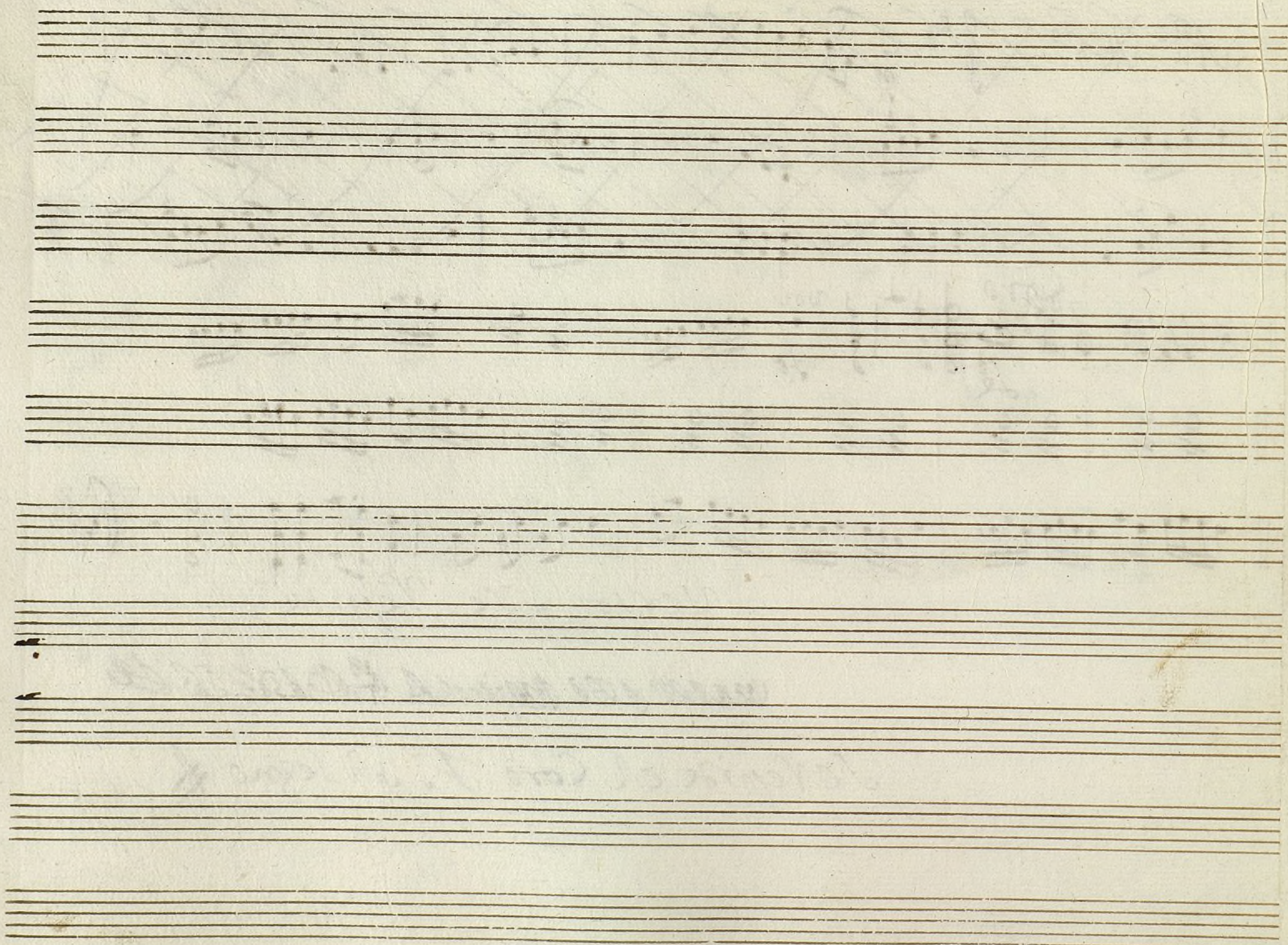
*Coro*  
*Le*

*Versos. y se Repite*

*se repite el Coro 1.º al segno*

*Se Repite el Coro 1.º al segno*







+

Violin 2<sup>o</sup> *Hay li do*

Loa



Loa

Handwritten musical score for a piece titled "Loa". The score is written on six staves. The first staff begins with the tempo marking "Alf.º Mod.º" and the word "Coro" above it. The notation includes various musical symbols such as clefs, time signatures, and notes. A large, diagonal cross is drawn over the second staff. The word "Voz" is written above the third staff. The score concludes with a double bar line on the sixth staff.

Verso y sigue





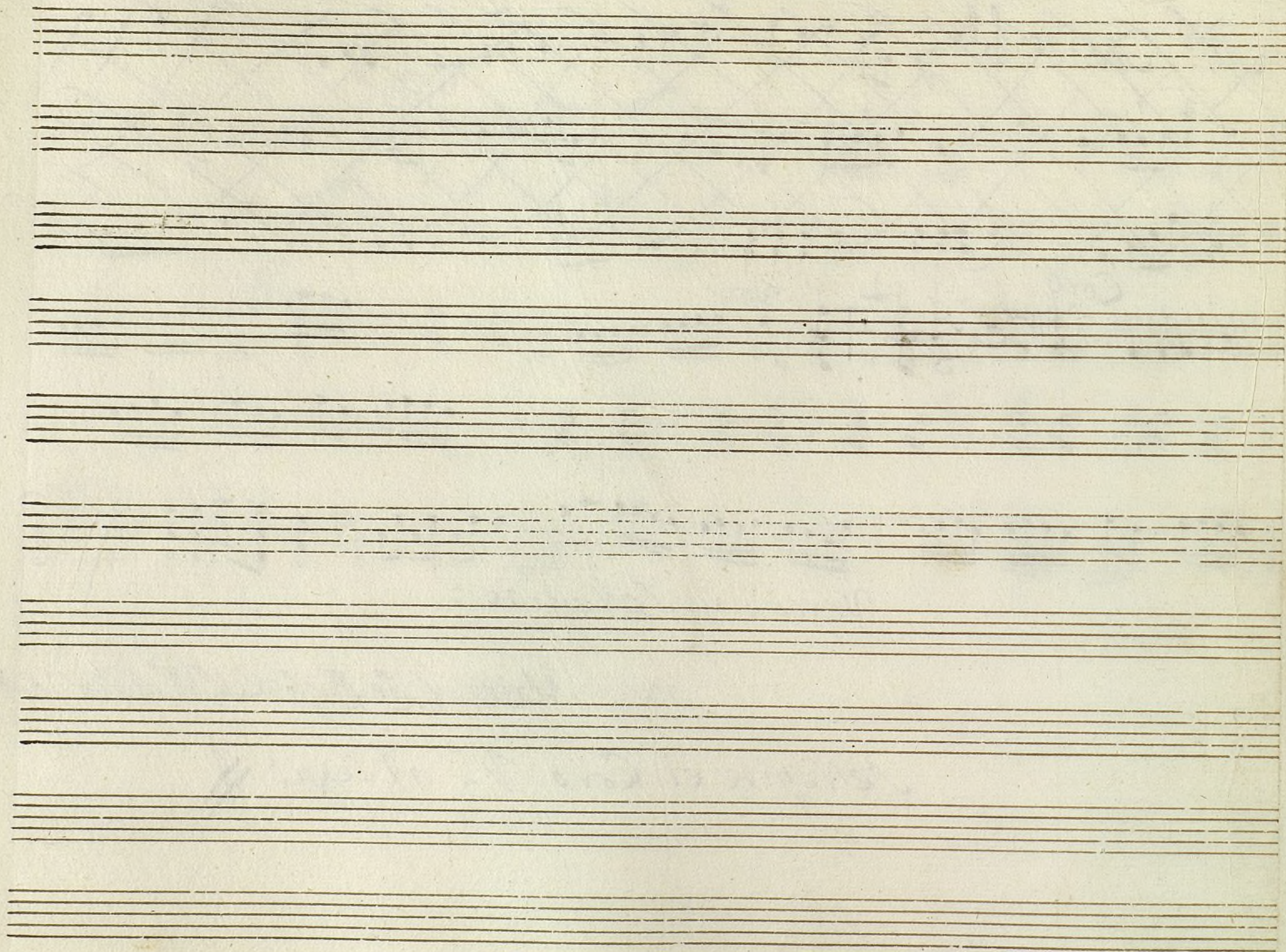
Verrucos y Senecioides:

vor

Se Repite el Coro 1.º al segno //

Veres y Se Repetir la cosa 1a





Ayuntamiento de Madrid



+

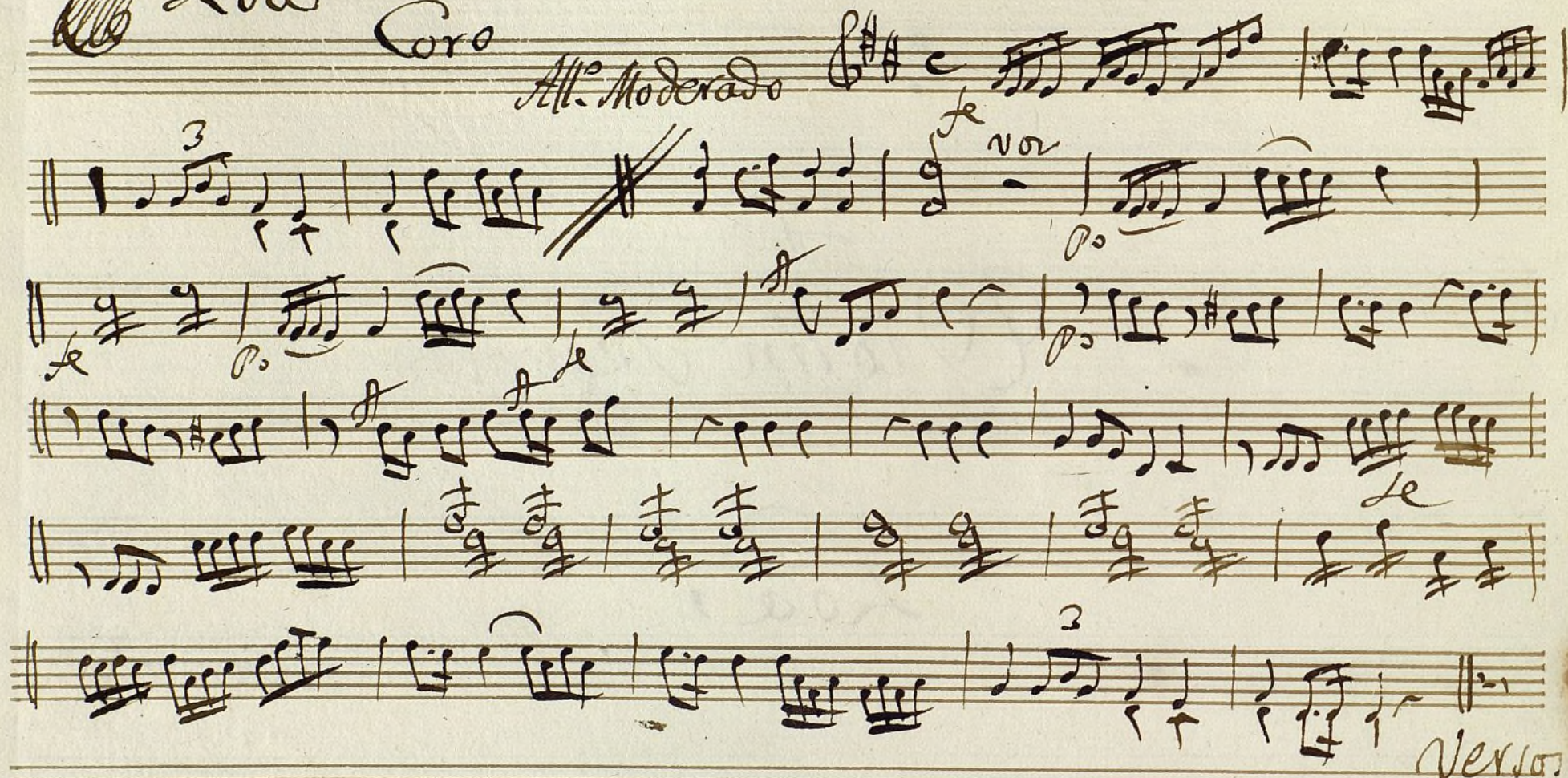
Violin Segundo

Loa



# Loa Coro

All. Moderado



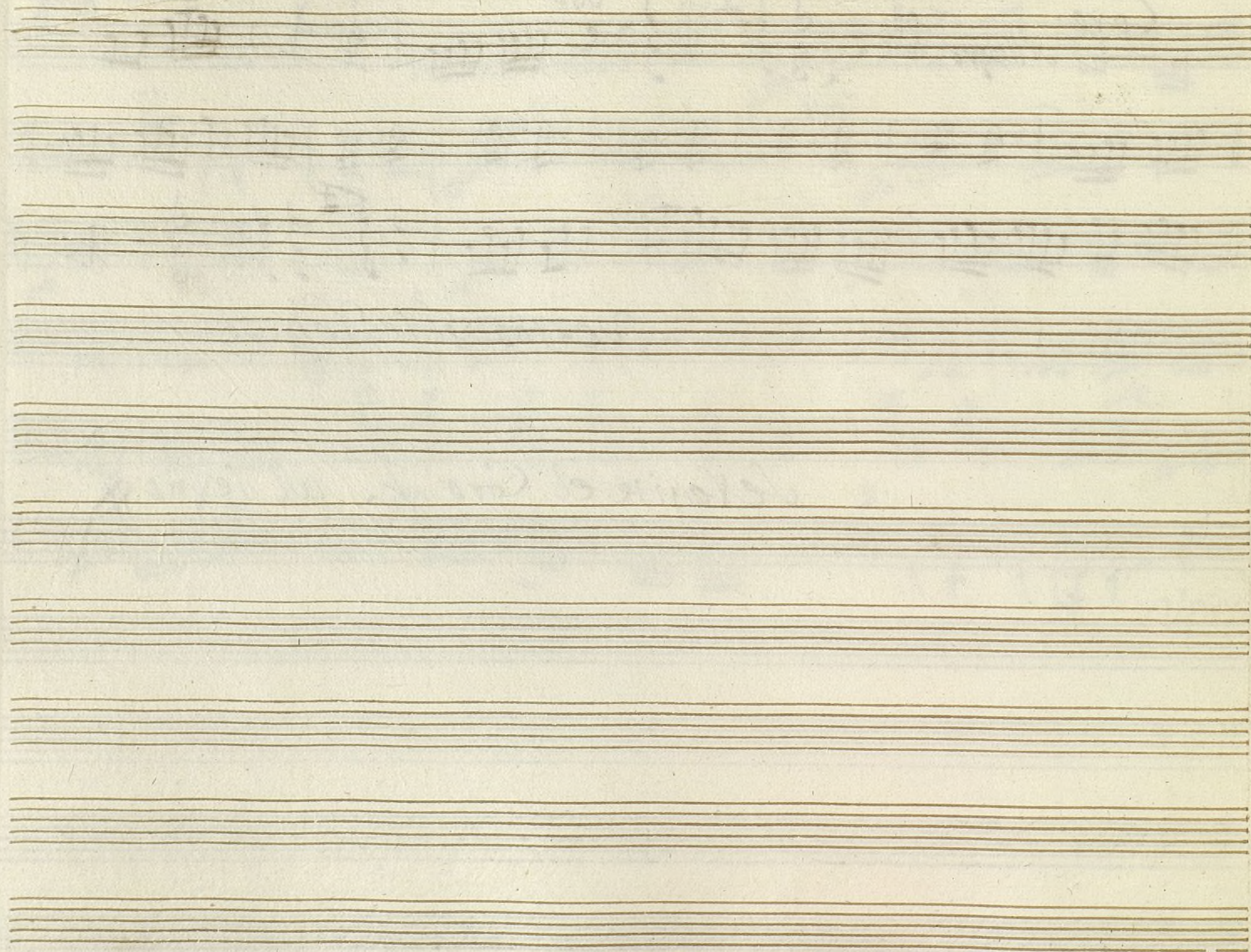


Coro Allegro 8<sup>va</sup> *vo*

Versos y se Repite

Se Repite el Coro 1.<sup>o</sup> al segno *ff*







oboe 1<sup>o</sup> en la Loc.

Coro

Mus 35-22

All. Mod. to

vor

Versos

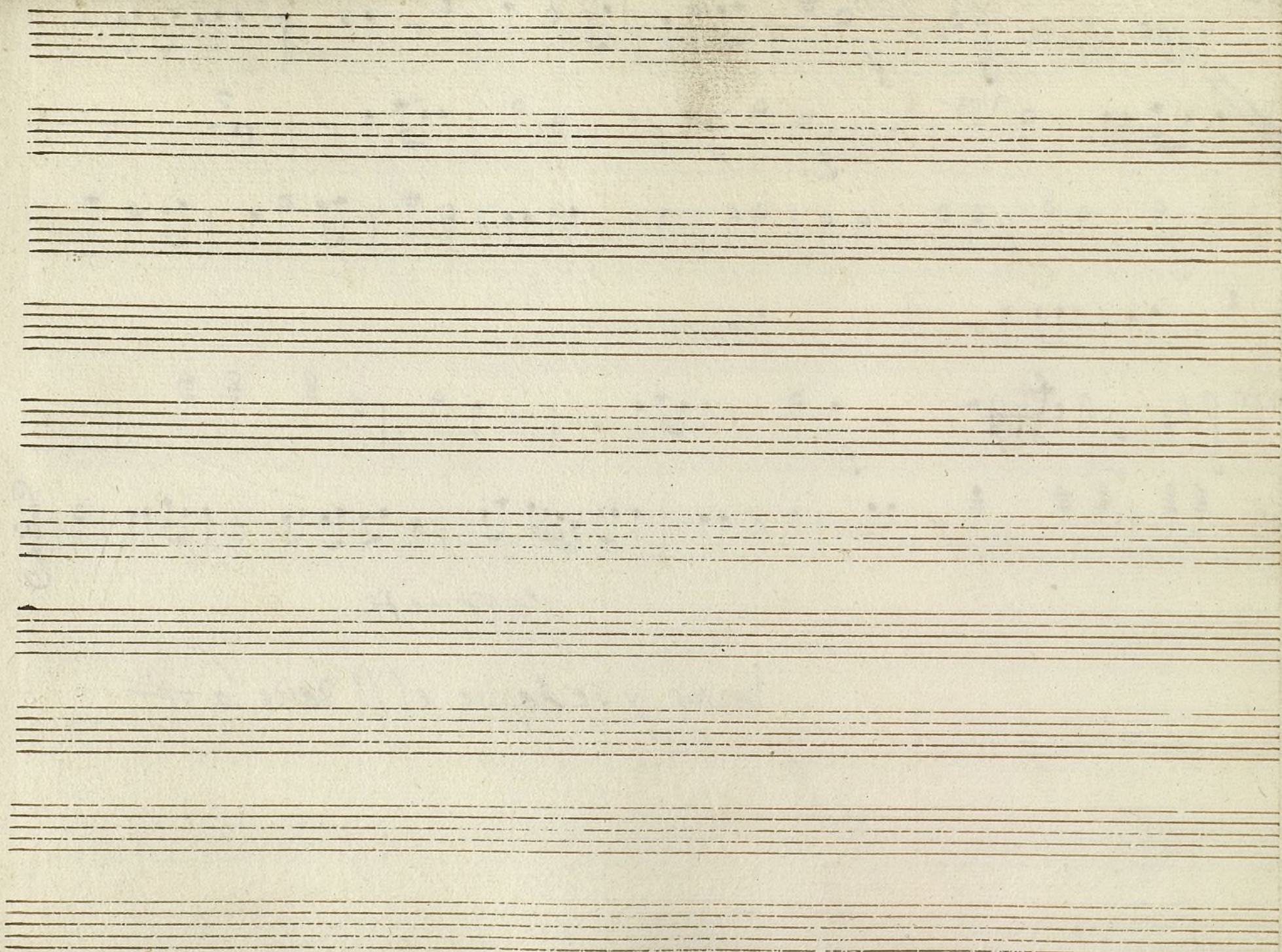
Coro

Le

severite

be sos y se Aepite el 1º desde la #





Ayuntamiento de Madrid

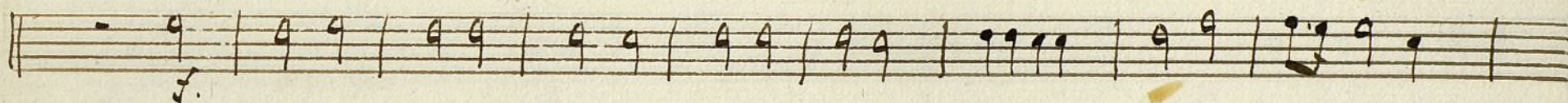
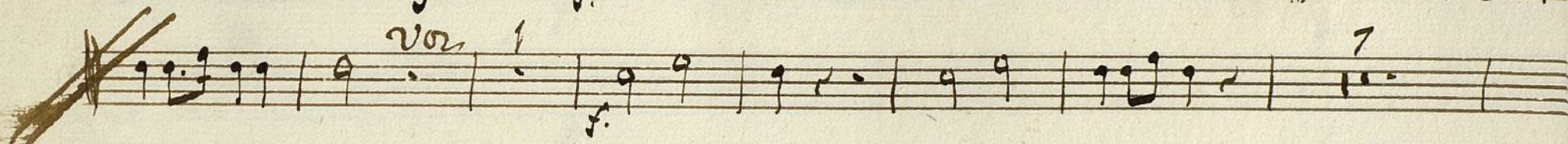
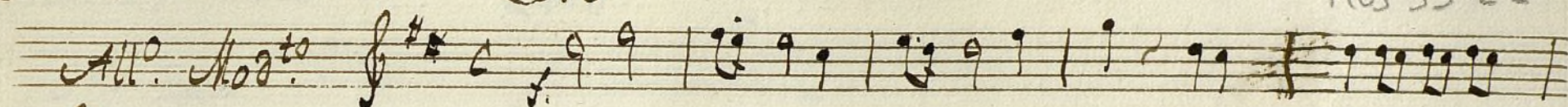


Oboe 2º en la Loa.

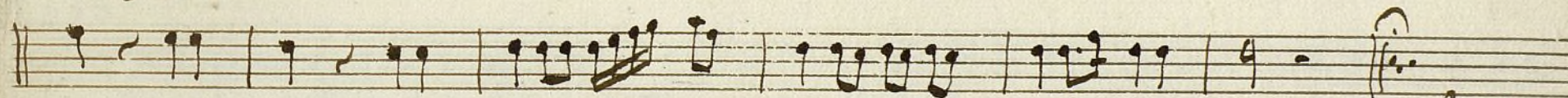
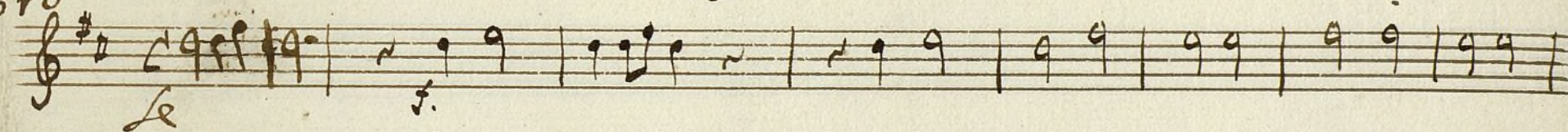
Coro

Mus 35-22

All.<sup>o</sup> Mod.<sup>to</sup>



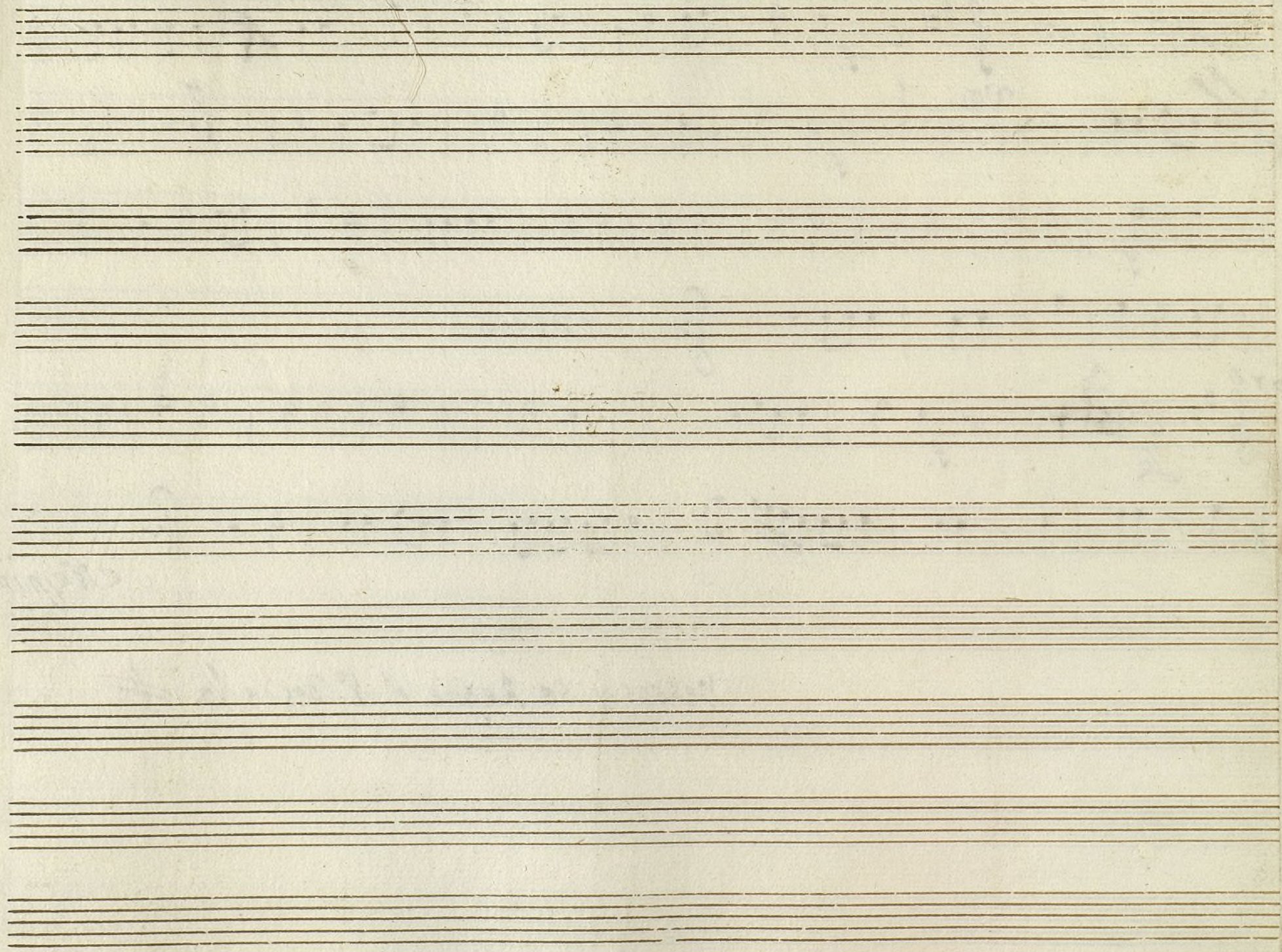
Coro



Se Repite

Versos y se Repite el 1º desde la #





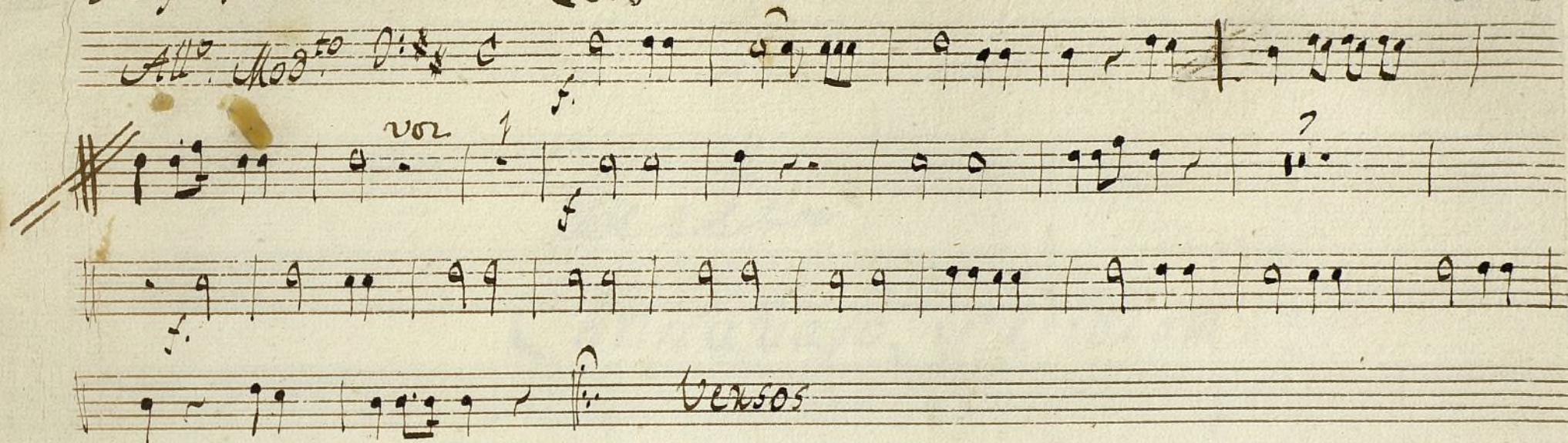


Exompa 1ª en la Loa.

Coro

MUS 35-22

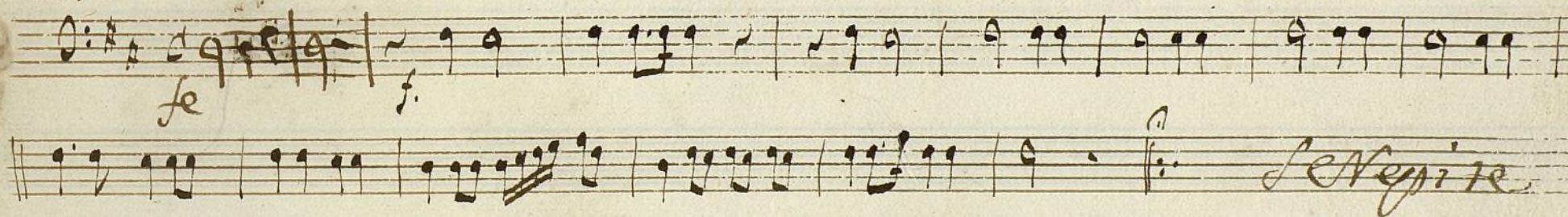
Allo. Mod<sup>to</sup> D:K C



vor 1

versos

Coro



fe

Se Repite

versos y se Repite el 1º desde la #



Ayuntamiento de Madrid



Baja en la mano.

Contrabajo, y Violon.

Loa



Loa

Coro

All.<sup>o</sup> Mod.<sup>to</sup>

Voz

Coro

Vencos



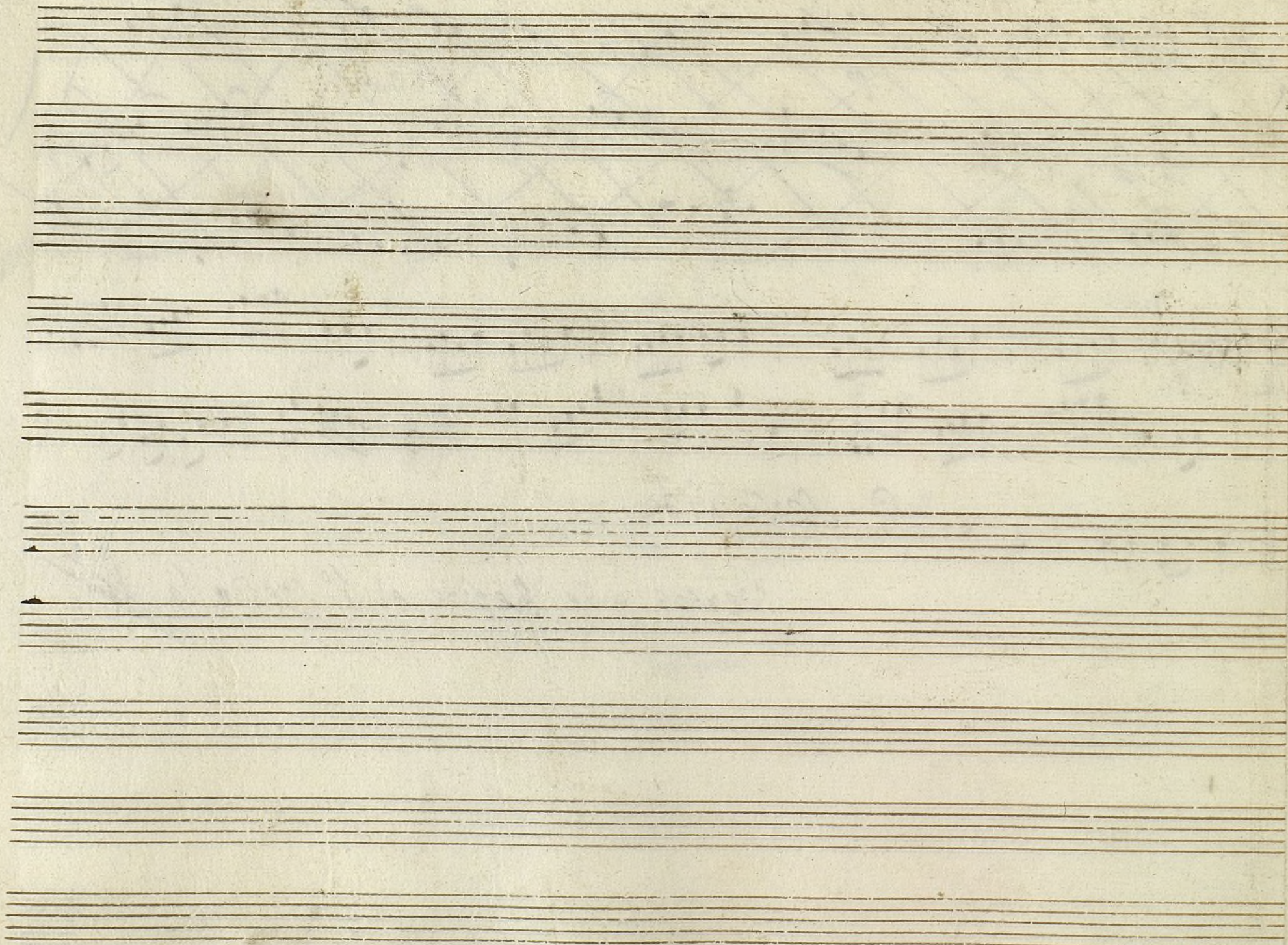
*And. Moder.*

Coro

*vo*

Versos y se Repite el 1º desde la ~~##~~







*Byll de loa*  
Contrabajo Duplicado

*Loa*



# Coro



Versos

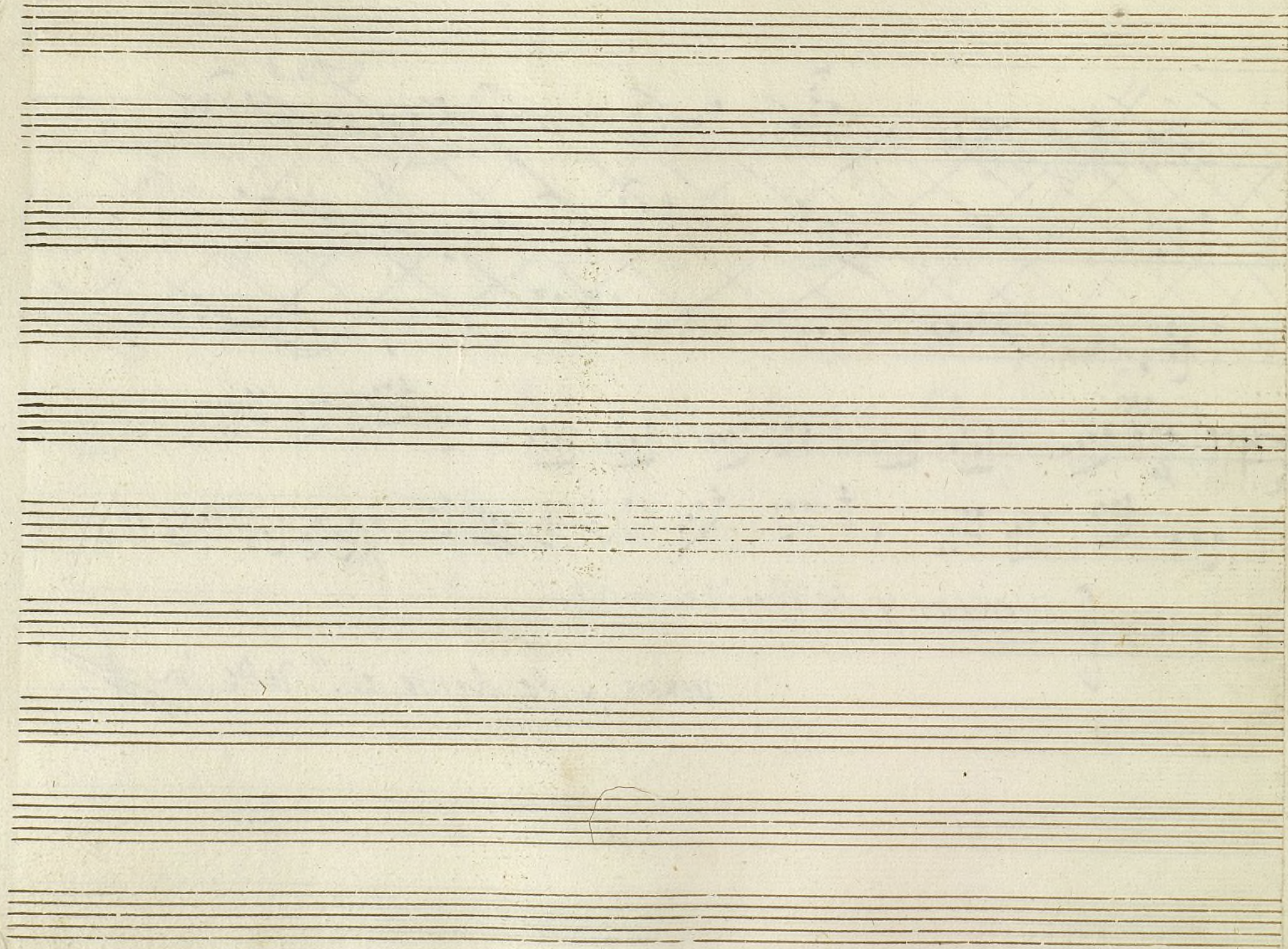




Versos y se Repite

Versos y se Repite el 1.º verso la ~~##~~





Ayuntamiento de Madrid



Zimbales en la Loa.

Mus 35-22

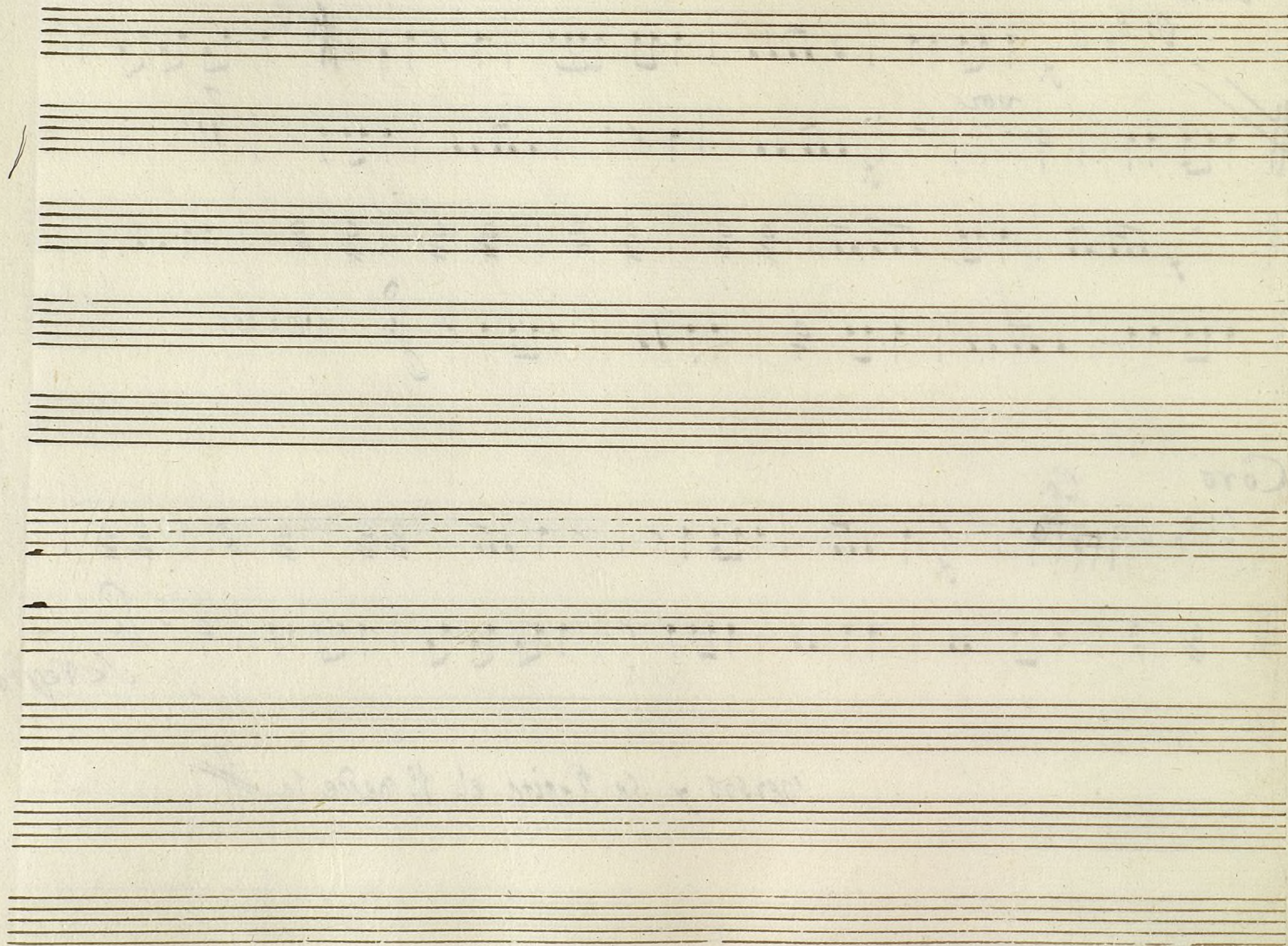
Handwritten musical notation for Zimbales en la Loa. The notation is on five staves. The first staff begins with a treble clef, a key signature of one sharp (F#), and a common time signature (C). The music consists of eighth and sixteenth notes. The second staff has a double bar line and a key signature change to one sharp (F#). The third staff continues the melody. The fourth staff has a key signature change to one sharp (F#) and ends with the word "versos." The fifth staff is empty.

Coro

Handwritten musical notation for the Coro section. The notation is on two staves. The first staff begins with a treble clef, a key signature of one sharp (F#), and a common time signature (C). The music consists of eighth and sixteenth notes. The second staff continues the melody and ends with a double bar line and the word "Se Repite" written below the staff.

versos y se Repite el 1º desde la #







# Bajo. Loa

+

Mus 35-22

Coro

*Allegro*

Coro nemor al di-  
ciembre Con atri butos de Abril puer el  
solo nos dispensa las venturas milamil las ven-  
turas milamil milamil: Versos

Volte



Coro Allegro *solo*

Corred Nacio  
 na les Nacionales venidla admirar venidla admi  
 rar Corred Nacionales venidla admirar Corred Nacio  
 na les venidla admirar venidla admirar admi  
 rar; 3 *Se Repite*

*Se Repite el Coro 1.º a la Señal*