

Leg. 1.º n.º 26.

Mus 68-23

Leg. 2.º n.º 61

+

Sainete.

Estados mudan Constituciones

De Laverna.

62

Pastoral.

6

8

Polonia

Mi Corde

rito

ven

pobre

Zito

no

tengas

Cenõ

por

q^e a otro

Duenõ

te

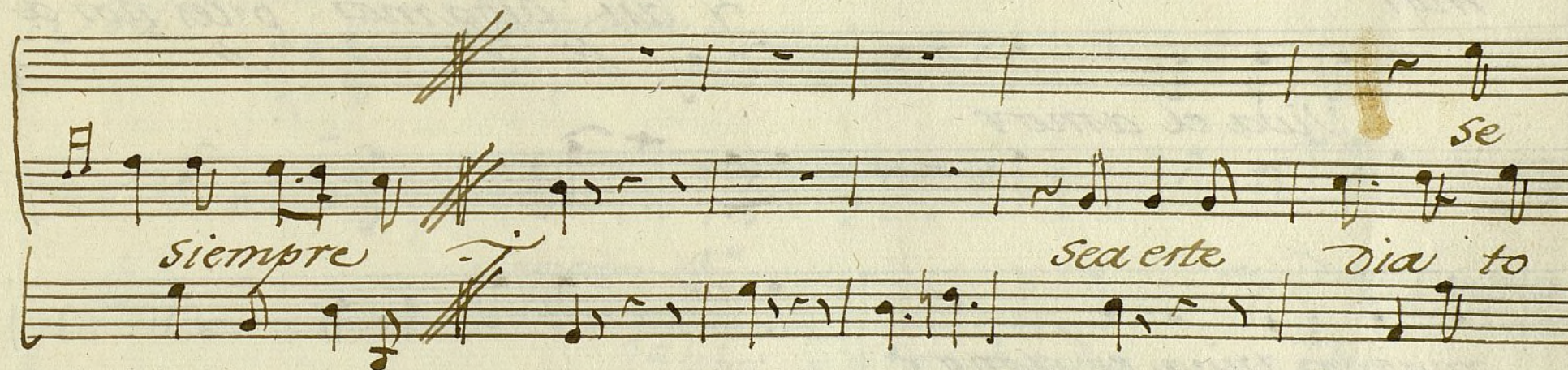
entreg

yo te

te

Sub

ermora



y así digamos pues nos amamos Viva el a
mos pues nos amamos nos a mamos

mor y así digamos pues nos a
Viva el amor

mamos Viva el amor
Viva el amor
muy P.^o la 1.^a vez

Handwritten musical notation on a five-line staff. The notation consists of several measures of music, primarily using eighth and sixteenth notes. The piece concludes with a double bar line. The word *Repire ala* is written in cursive above the final measure, followed by a double bar line and a sharp symbol.

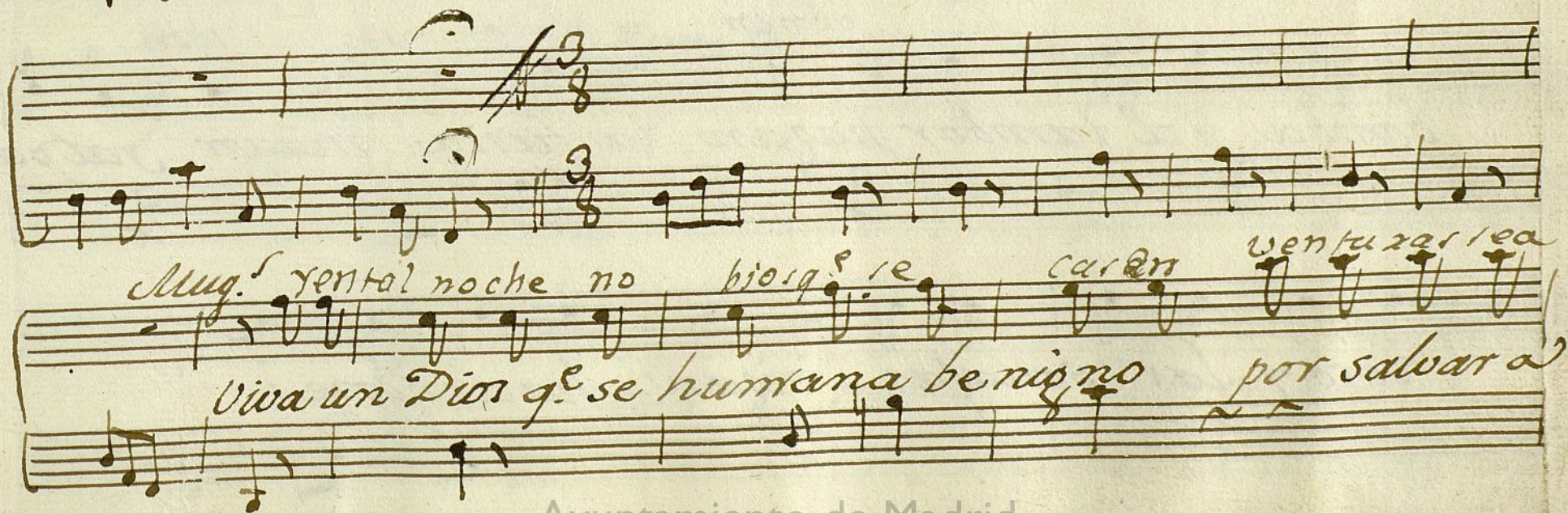
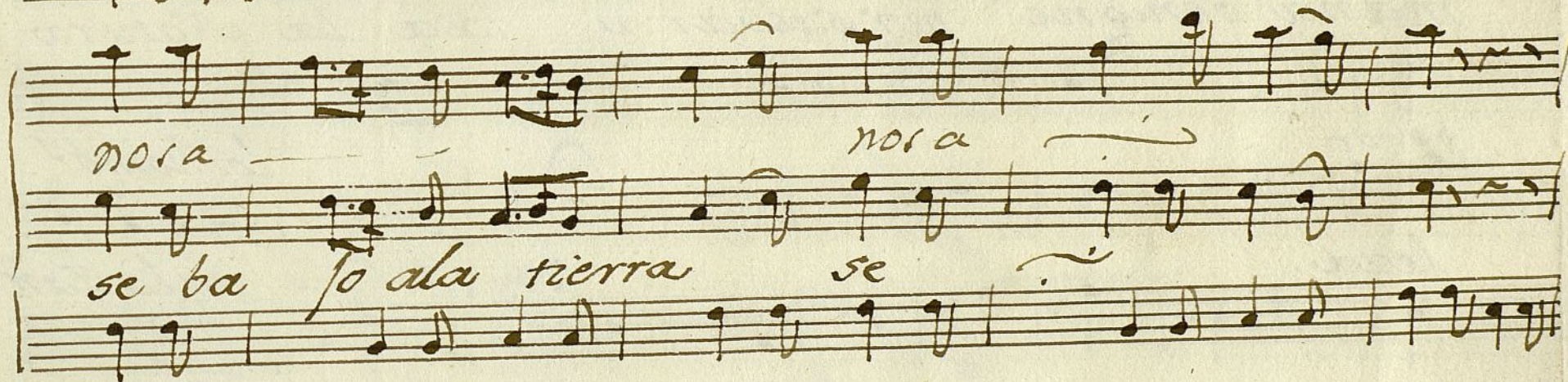
Handwritten musical notation on a five-line staff. The piece begins with the tempo marking *All.^{to}* and the title *Pastorela.* in cursive. The notation includes a key signature change to one flat and a time signature of 6/8. The music is written in a single melodic line.

Handwritten musical notation on a five-line staff. The piece is marked *Cantan 4.^o*. Below the staff, the lyrics are written in cursive: *2.^a letra: entan buena no ghe* on the first line, and *Den nos aqui naldo* on the second line. The notation includes a key signature change to one sharp and a time signature of 4/4.

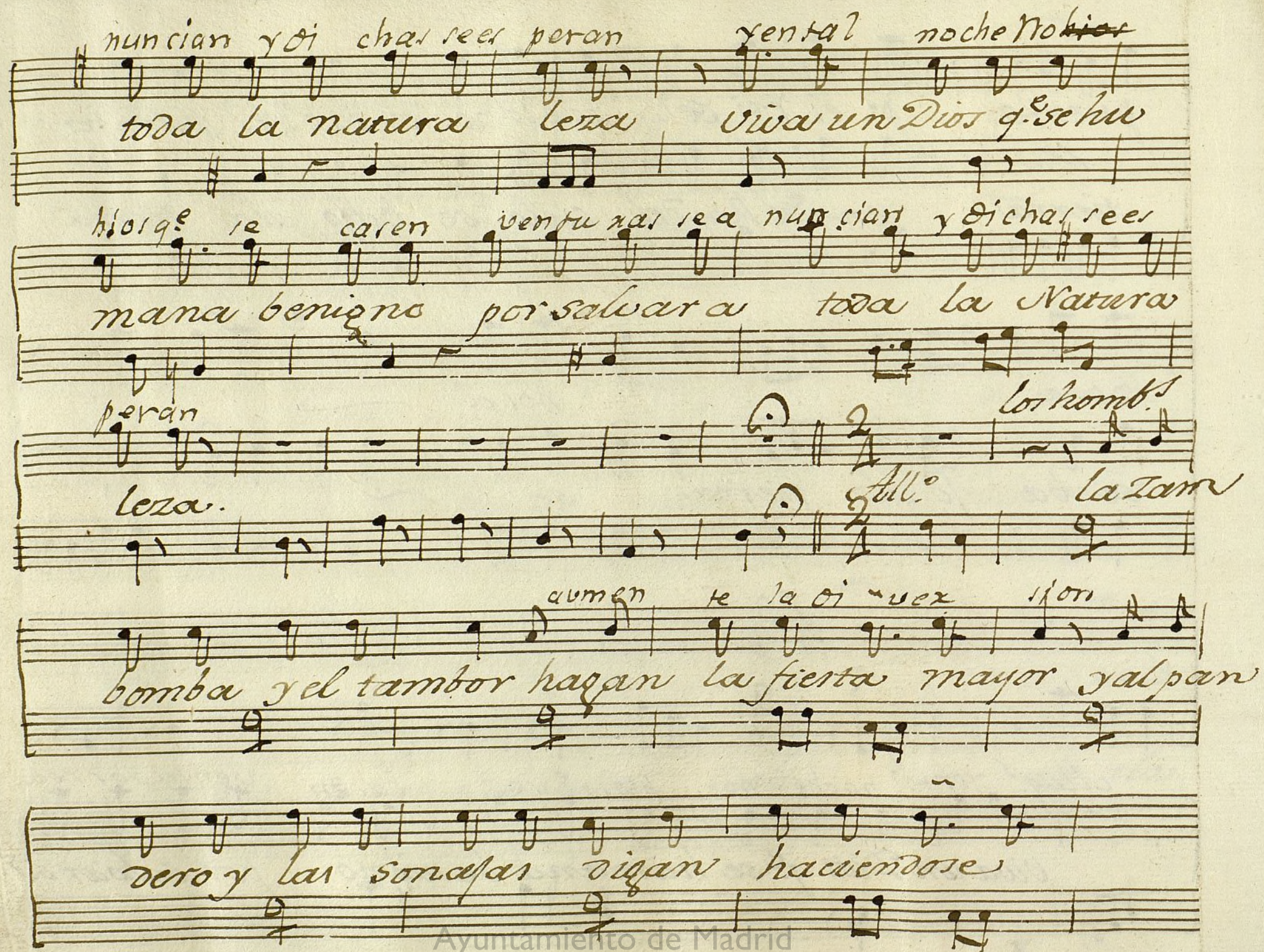
Handwritten musical score on aged paper, featuring four systems of music. Each system consists of a vocal line (treble clef) and a bass line (bass clef). The lyrics are written in Spanish and are repeated across the systems. The notation includes various musical symbols such as notes, rests, and clefs.

Lyrics:

ho or se di viertan ho or
pues es noche buena pues
pue el Rey del cielo nor a brelar
en q. el Rey del cielo se bajo ala
puentar p. el Rey del cielo nor a brelar
tierra en q. el Rey del cielo se bajo ala



nuncian y oi char reer peran yental noche ~~No~~hior
toda la natura leza viva un Dios q. se hu
hior q. se caren ventu xas se a nup cian y oi char reer
mana benigno por salvar a toda la Natura
peran los hombr.
leza. All.^o la Tam
aumen te la oi uex i'on
bomba y el tambor hagan la fiesta mayor y al pan
vero y las sonajas vigan haciendose



Handwritten musical score on a single page, featuring multiple staves with notes and lyrics in Spanish. The lyrics include:

xa far di gan ha ci en do se
xa
si gan ha ci en do se
xa
las
xa
las
Pastorelas
1.º
Den nos a qui na l do pue es no che

buena puer en q. el Rey del

Cielo se bajo ala tierra alegrenie

todos en noche como esta alegrenie

todos en noche como esta en

en noche en noche como esta.

Se repite la Pastorela ^{defe} _{faut}

la Señal.

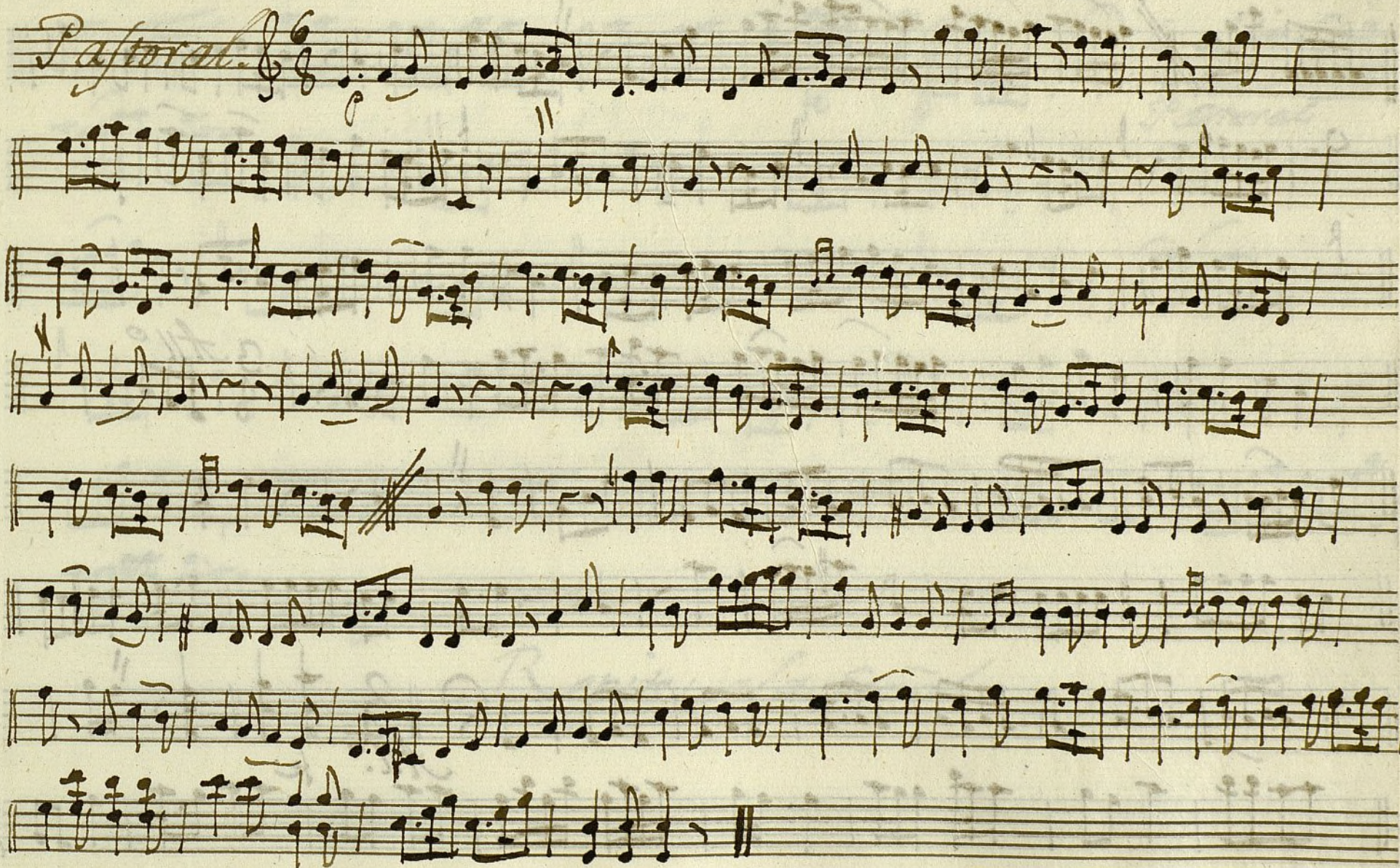
Ayuntamiento de Madrid

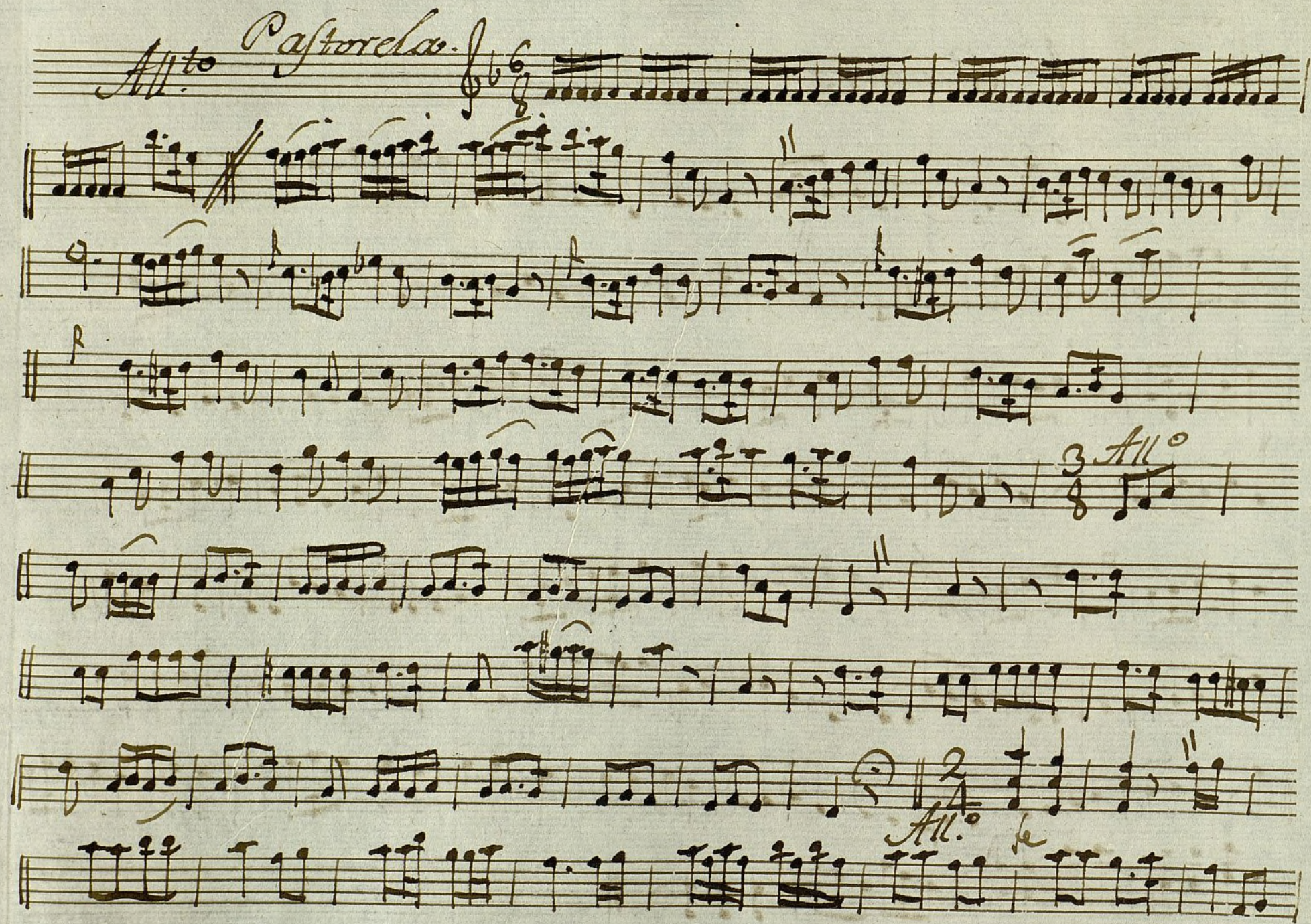
1200055441

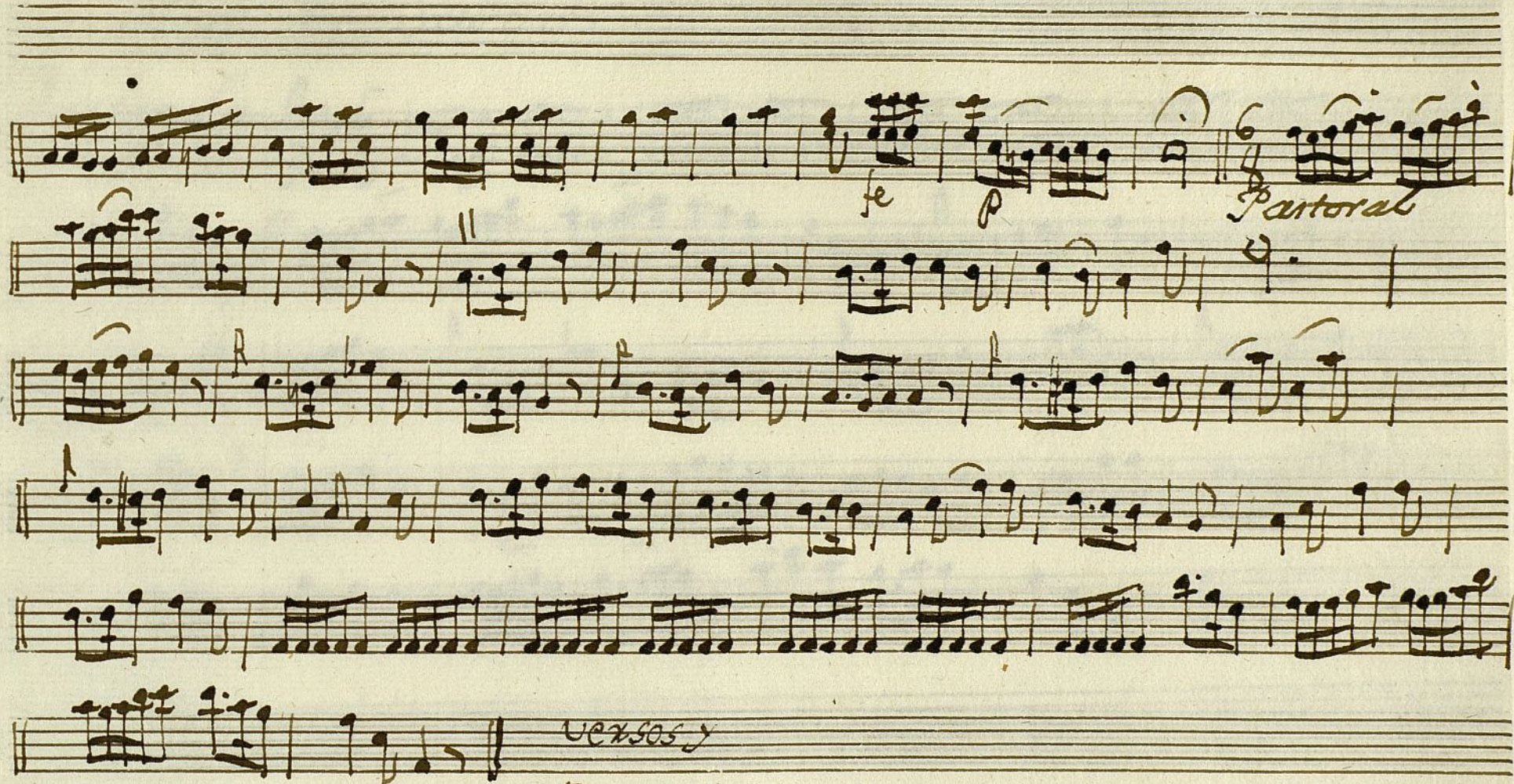
Violin 1^o Sainete

t

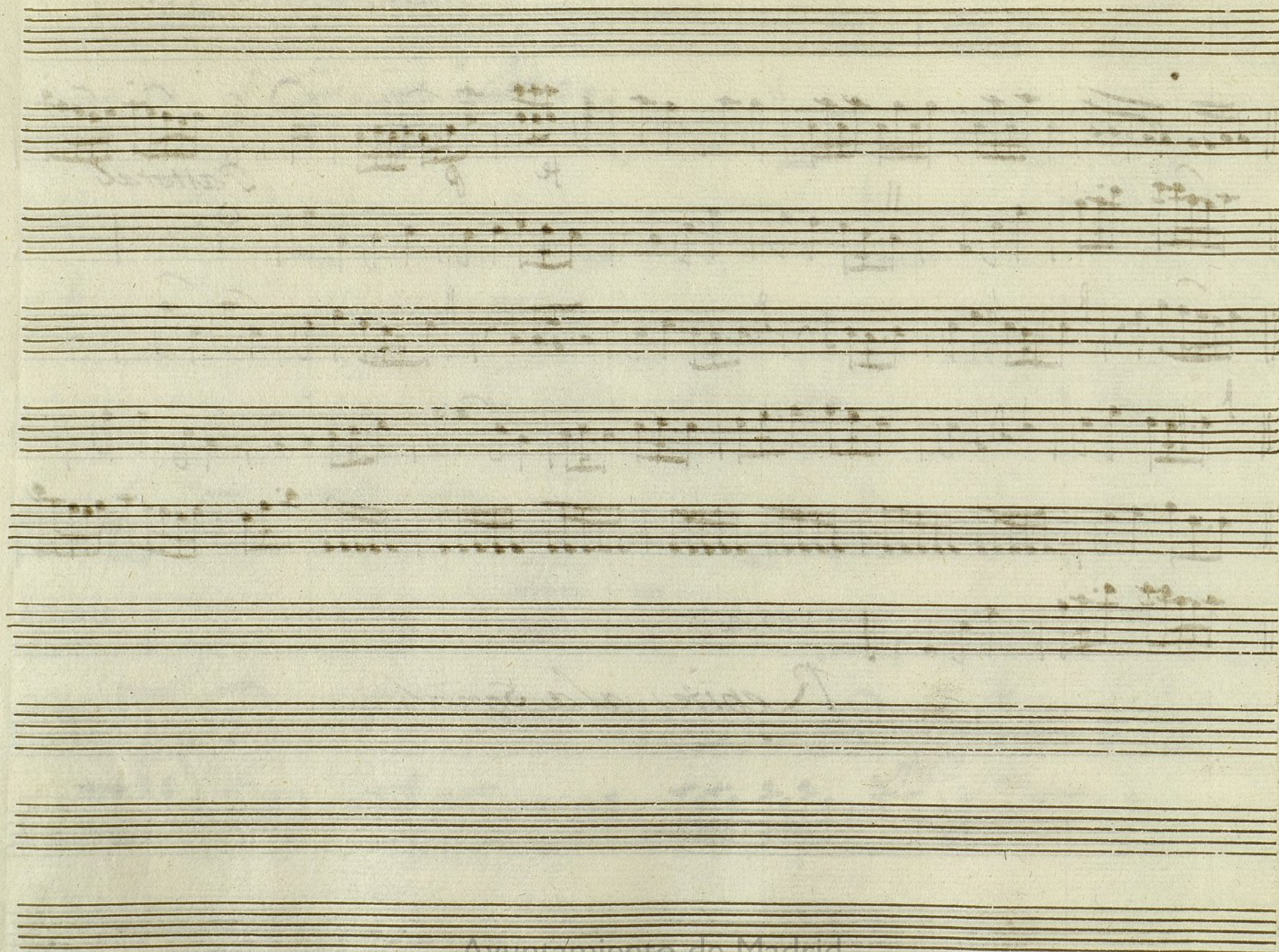
Mus 68-23





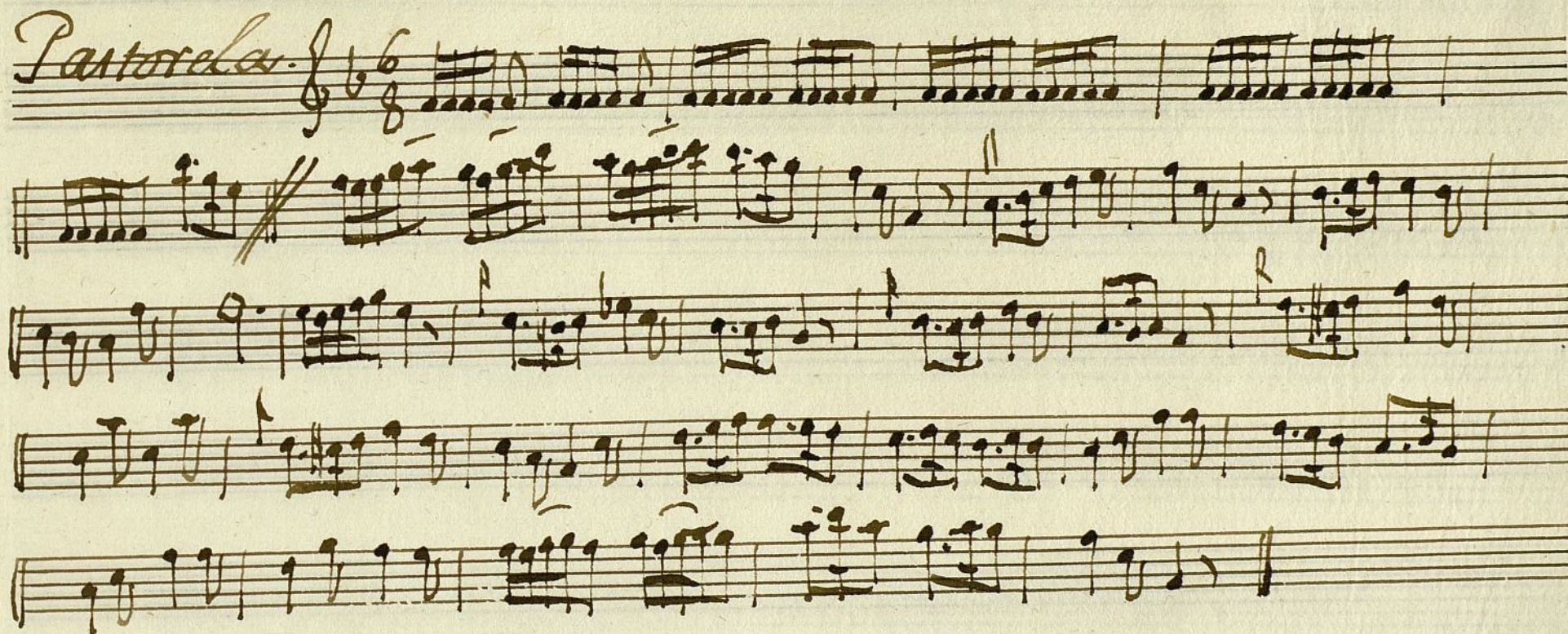


Repite ala Señal.



Violin 1.º Sainete

Pastorela.

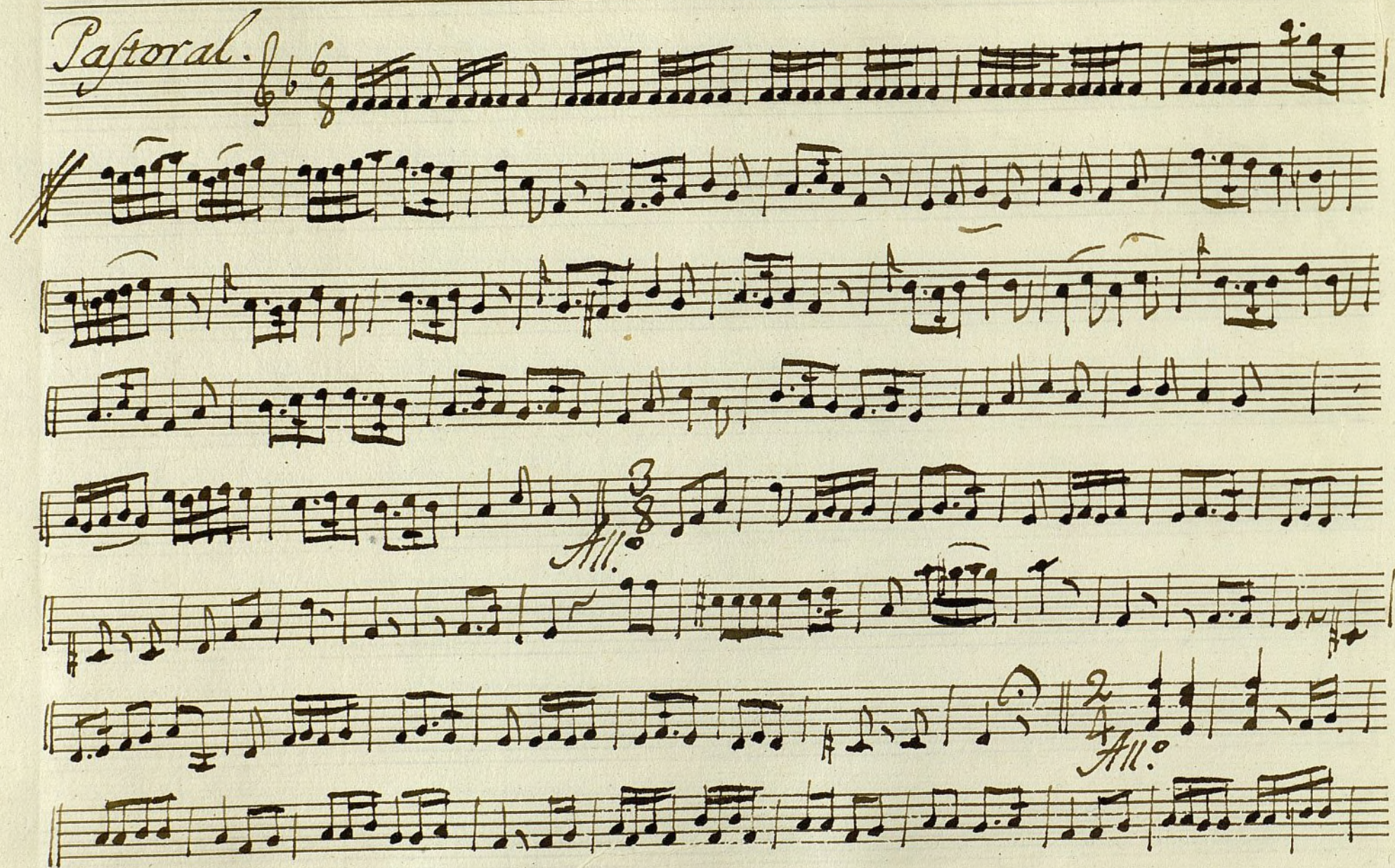


Ayuntamiento de Madrid

12000 55441

Violin 2.^o Sainete. ^t

Pastoral.





versos y Repite ala //

Ayuntamiento de Madrid

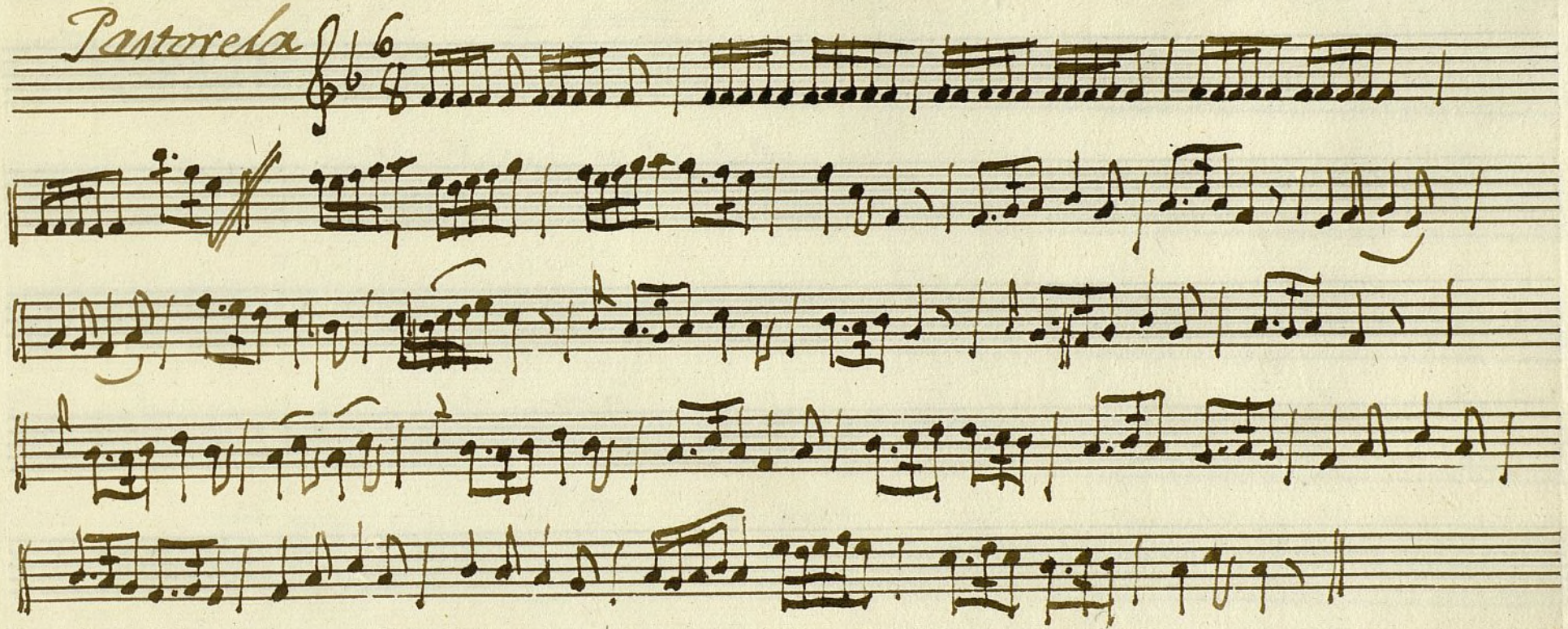
1200055441

t

Mus 68-23

Violin 2º Sainete

Pastorela



Ayuntamiento de Madrid

1200055441

t

Mus 68-23

Oboe 1.º Sainete.

Pastoral.

Partorela

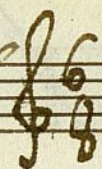
All.^{to}

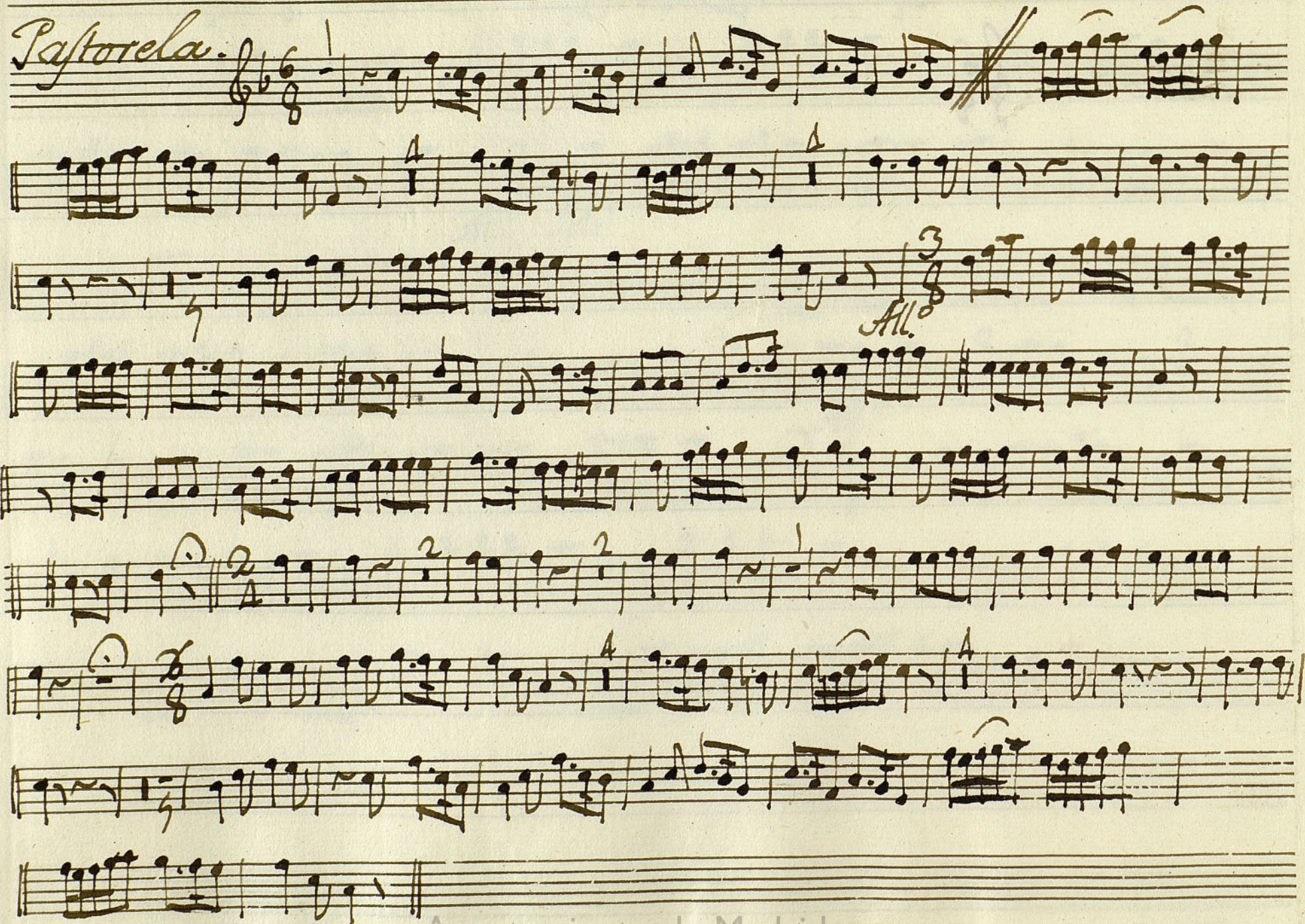
This is a handwritten musical score for a piece titled 'Partorela'. The notation is written on ten staves. The first staff begins with a treble clef, a key signature of one flat (B-flat), and a 6/8 time signature. The tempo marking 'All.^{to}' is written above the first staff. The music features a variety of rhythmic patterns, including eighth and sixteenth notes, and rests. There are several measures with multiple beamed notes, suggesting a fast or lively tempo. The notation is in a cursive, handwritten style. The piece concludes with a double bar line on the tenth staff. Below the main score, there are three empty staves.

All. Solo

All.

t

oboe 2.^o SainetePastoral. 



t
Trompa 1.^a Sdinetete.

Pastoral.

Pastorela.

Handwritten musical score for 'Pastorela'. The score is written on six staves. The first staff begins with a treble clef, a key signature of one flat (B-flat), and a 6/8 time signature. It contains a series of eighth and sixteenth notes, with a double bar line and a repeat sign. The second staff continues the melody, ending with a 3/8 time signature and the word 'Tace.'. The third staff starts with a 2/4 time signature and contains a series of eighth and sixteenth notes. The fourth staff continues the melody, ending with a 6/8 time signature. The fifth and sixth staves continue the melody, ending with a double bar line. The score is written in brown ink on aged, slightly stained paper.

t

Mus 68-23

Trompa 2.^a Sainete.

Pastoral. C: 6/8

Pastorela.
All.^{to}

Facc.