

MUS

65-8

LASERNA, Elos de.

LA TRANSFORMACION DEL

SOPISTA.

SCINETE. 5 117 h.

partitura

Violin 1^a

"

Violin 2^a

Bojo.

Bojo.

clave.

Leg.^o 3.^o n.^o 125/40



Leg.^o 1.^o n.^o 45

2/4

Mus 65-8

Sainete

La transform.^{on} de el Soplita

Aldovera
76 dos

De Laserna.

Alto

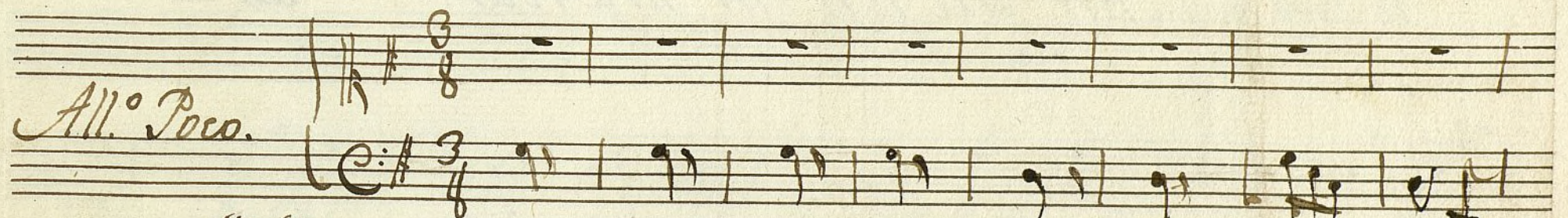
Azoba y media de

Un Abate y una U-

*puches se merendo cierta Vieja y toda la noche an-
sia se pusieron far penegues q^e les duraron las*

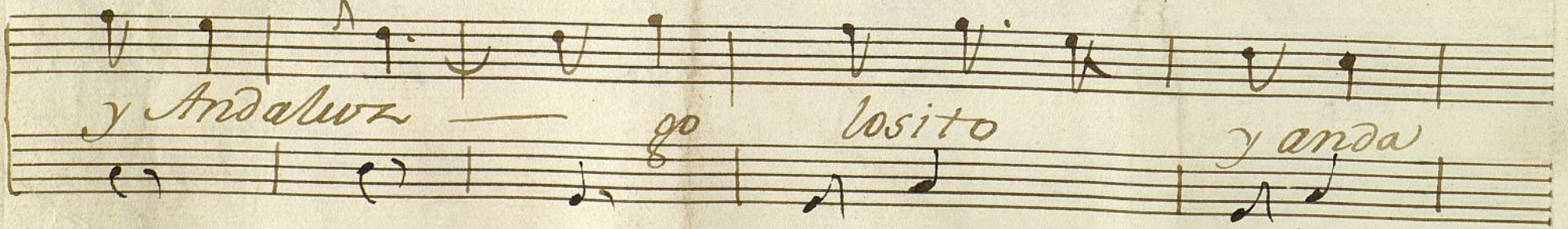
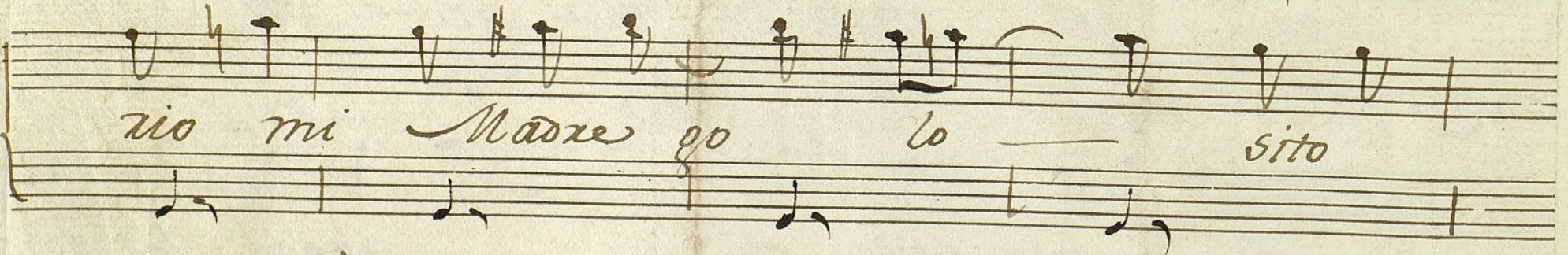
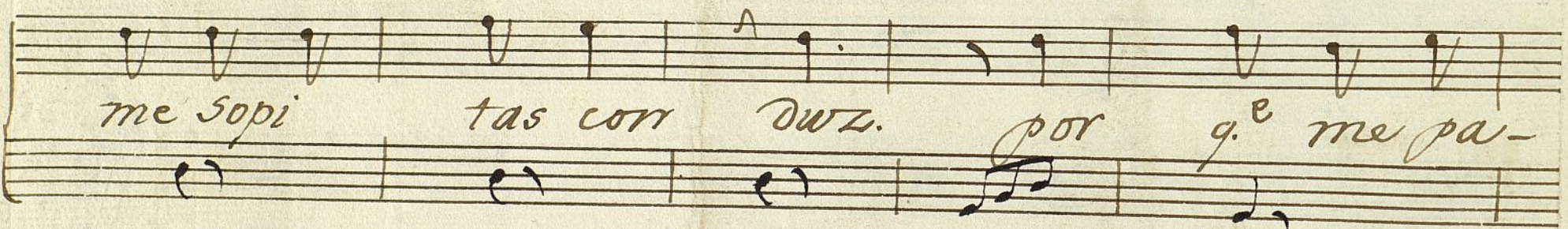
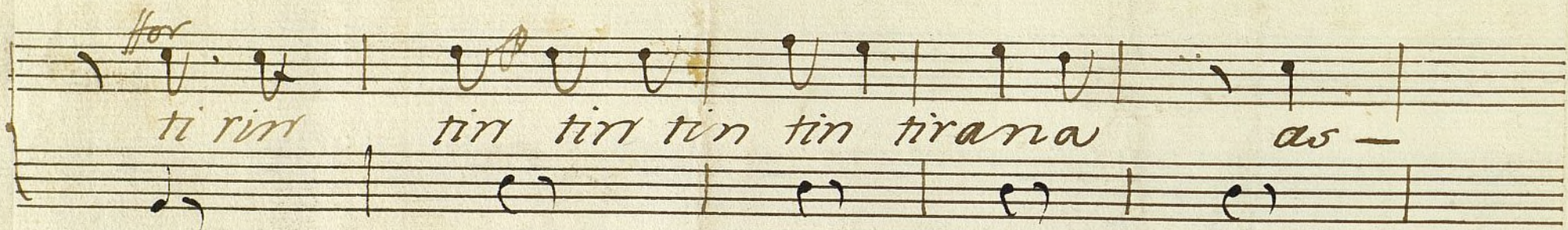
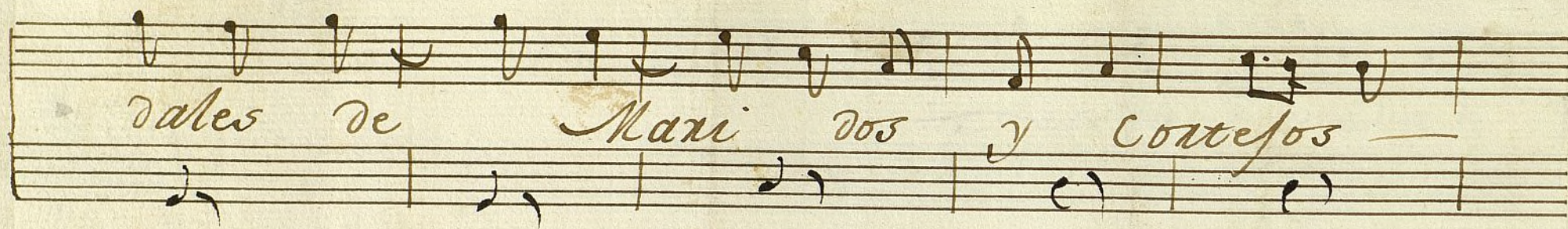
*dubo bailando la churumbela y toda
monas desde la Pasqua hasta Reyes q^e les*

Verso y Repite

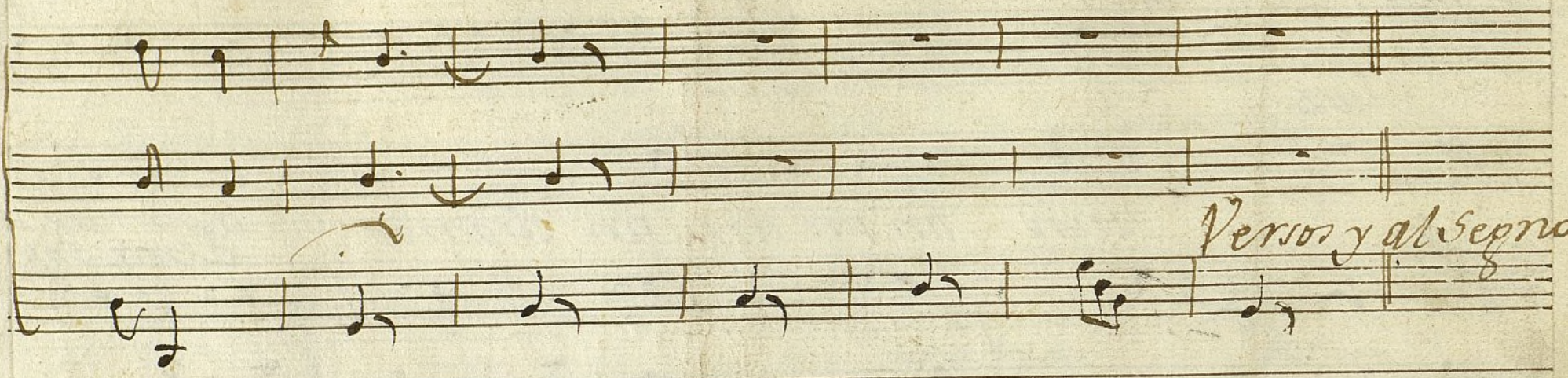


Ahora





3
 todos.
 luz.
 tirin tin tin tin tin tirana asomate a e.
 asme sopi-
 se balcon y da consuelo a tu amante con
 tas con luz por q. me pario mi Madre go-
 tu lo caxita de sol corr
 sito y anda luz go
 me se



Versos y al Sepno ~~##~~

Violin 1^o en el Saynete.

No. All^{to}

Voz

4



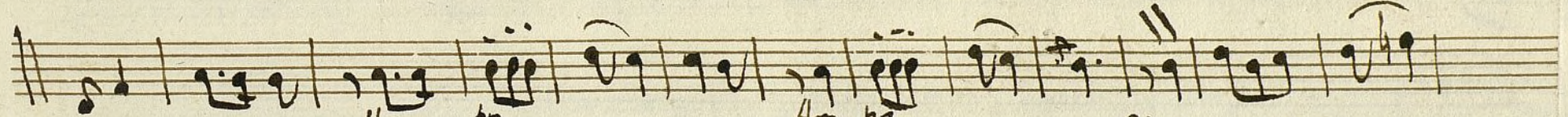
~~Allegro~~

All^o poco



verso y
repite

Voz



Hor po

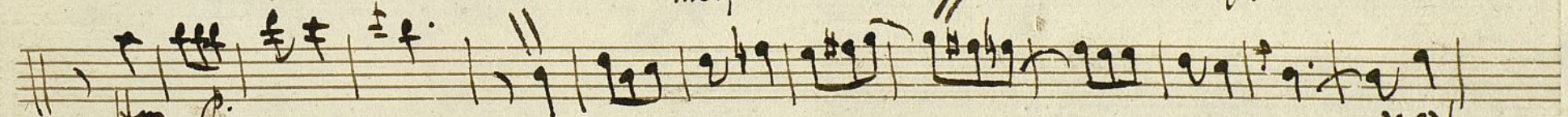
Hor po

Voz



mez.

Hor po

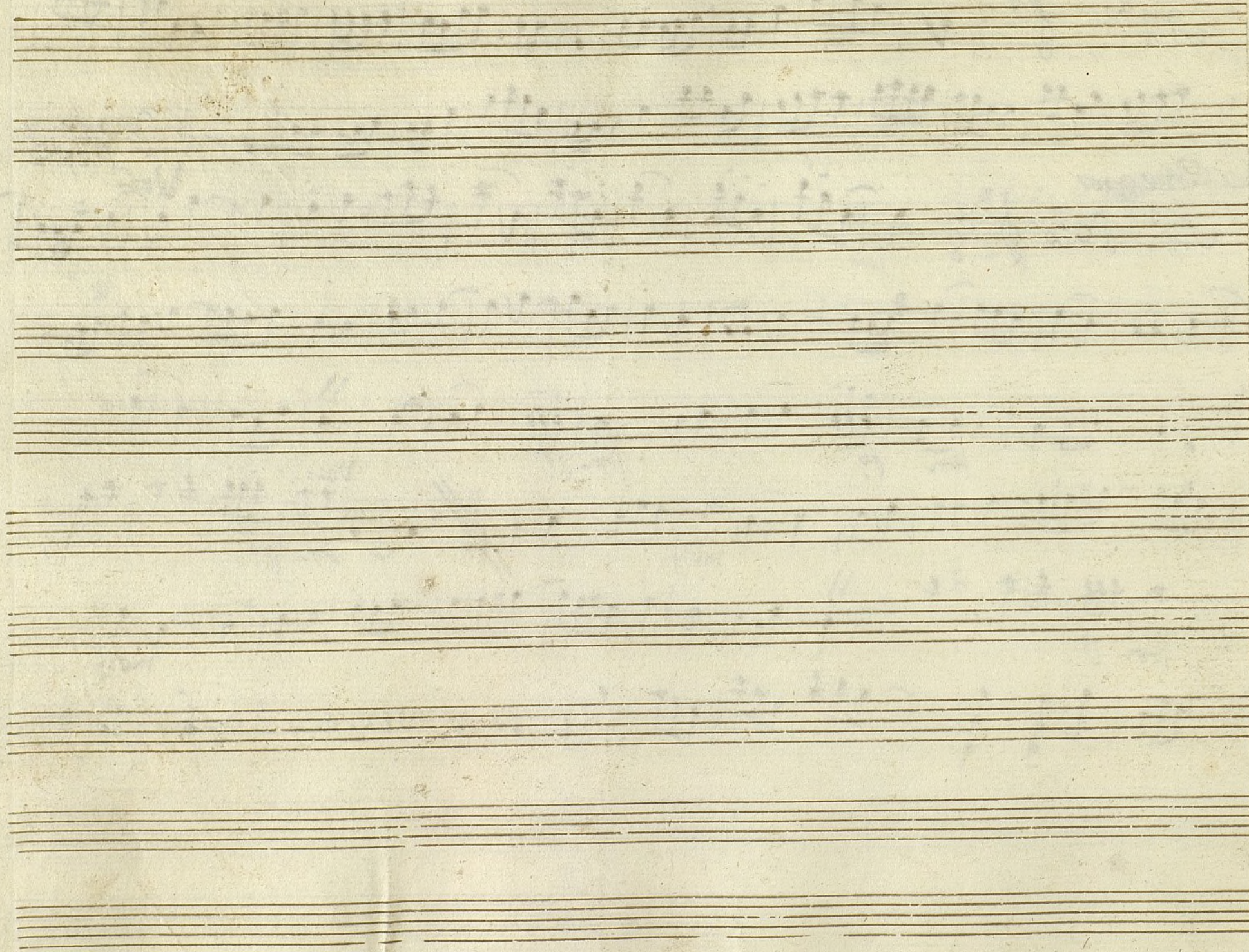


Hor p.

mez.



verso y repite Allegro.

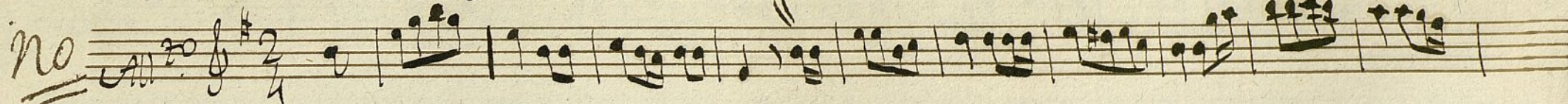



Ayuntamiento de Madrid


12000 55434

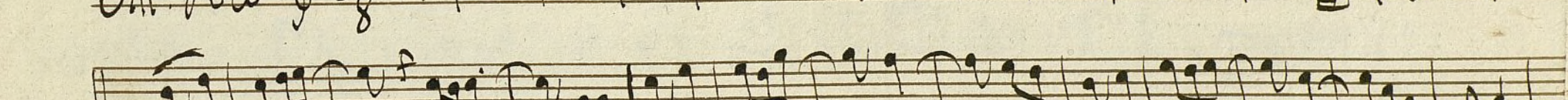
Violin 1.º en el Sainete


5

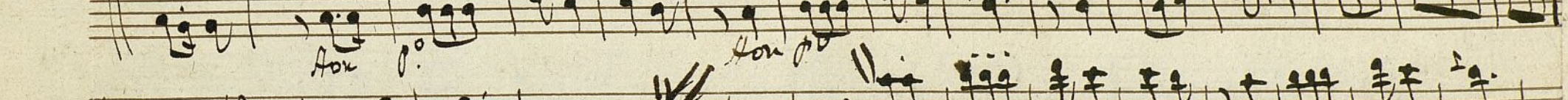
No 




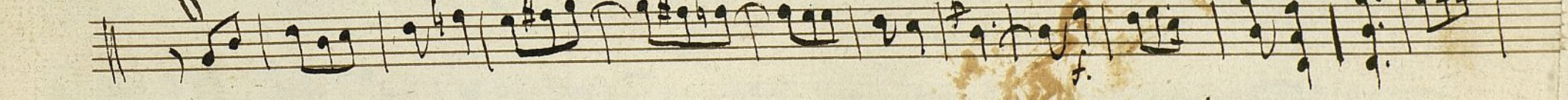
Al. poco 

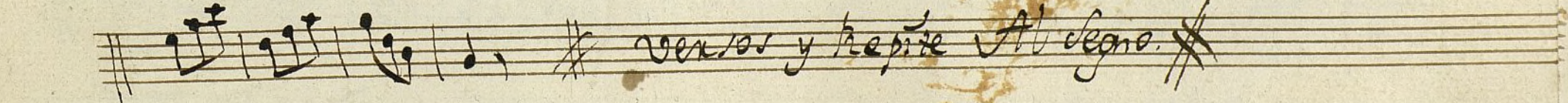




For. p. 

For. p. 

mez. f. 

f. 

versos y repite Al. legno.

Ayuntamiento de Madrid

12 000 554 3 6

Violin 2º en el Sagnete

No. 40 *All.^o* $\text{G}^{\#} \frac{2}{4}$

venor y repite

All.^o poco $\text{G}^{\#} \frac{3}{8}$

Am p.^o *Am p.^o*

mez. f. *Am p.^o*

Am p.^o *mez. f.*

venor y repite Al Segno.

Ayuntamiento de Madrid

1200055434

Bajo en el Saynete.

No

All.^o 2/4 $\text{D:}\sharp$ 

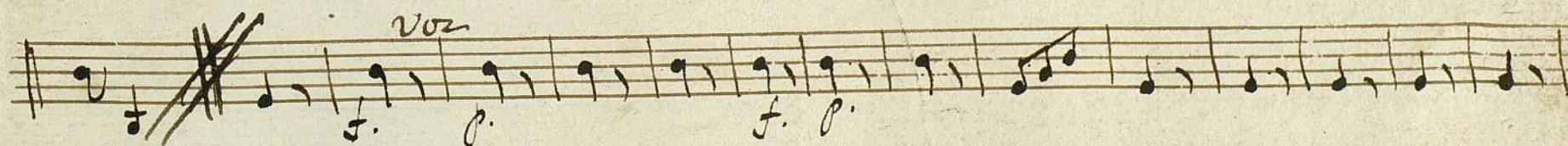
*Versory
Repite*

All.^o poco 3/4 $\text{D:}\sharp$ 

Voz



mez. f.

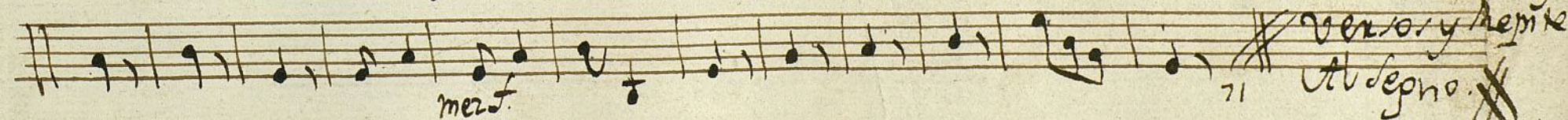
Voz 

f.

p.

f.

p.



mez. f.

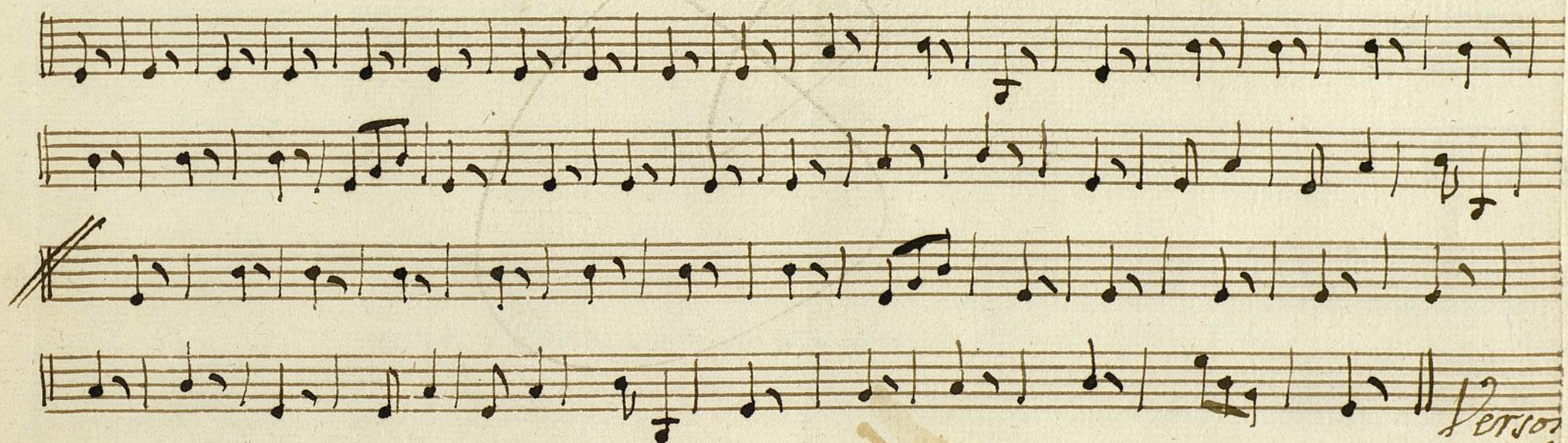
*Versory Repite
Allegro.*

Ayuntamiento de Madrid

12000 55434

Bajo Sainete.

All.^o Poco. C: 3/8



Version
y Repite al Segno

Ayuntamiento de Madrid

1200055436

8. 19
61. 8


Clave

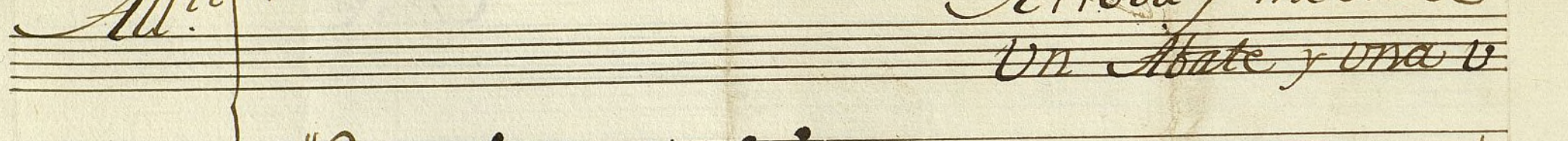
t

Sainete

La Transformacion del Soplista;

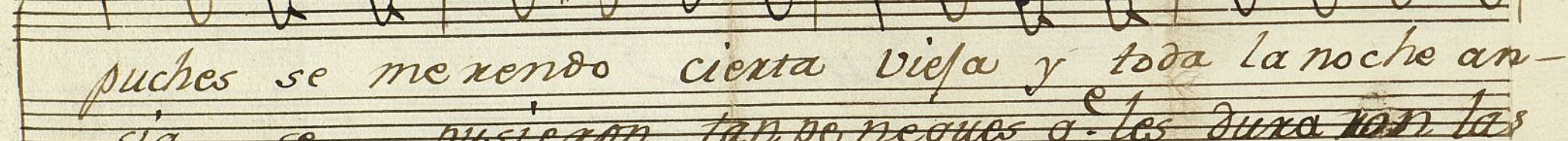
De Laserna


All.^{to}  *Arroba y media de
Un Abate y una u*



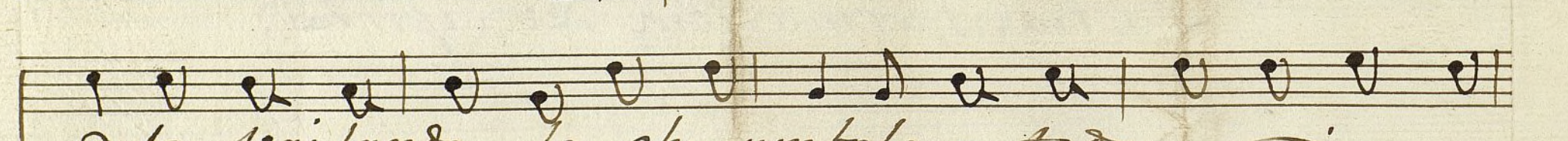


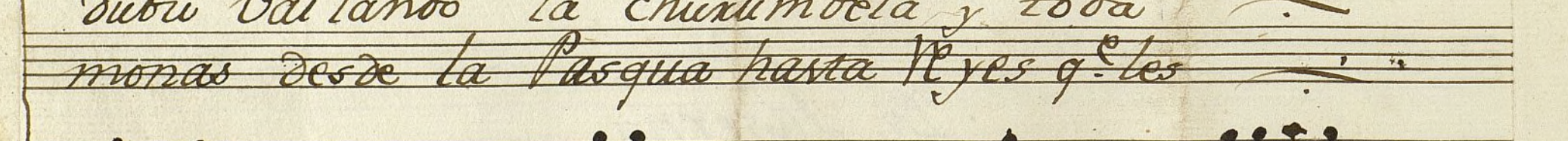
*puches se me xendo cierta vieja y toda la noche an-
sia se pusieron tan penegues q^e les dura ran las*






*dubu bailando la churumbela y toda
monas desde la Pasqua hasta Reyes q^e les*







*Versos y
se Repite*

All.º Poco

Alza

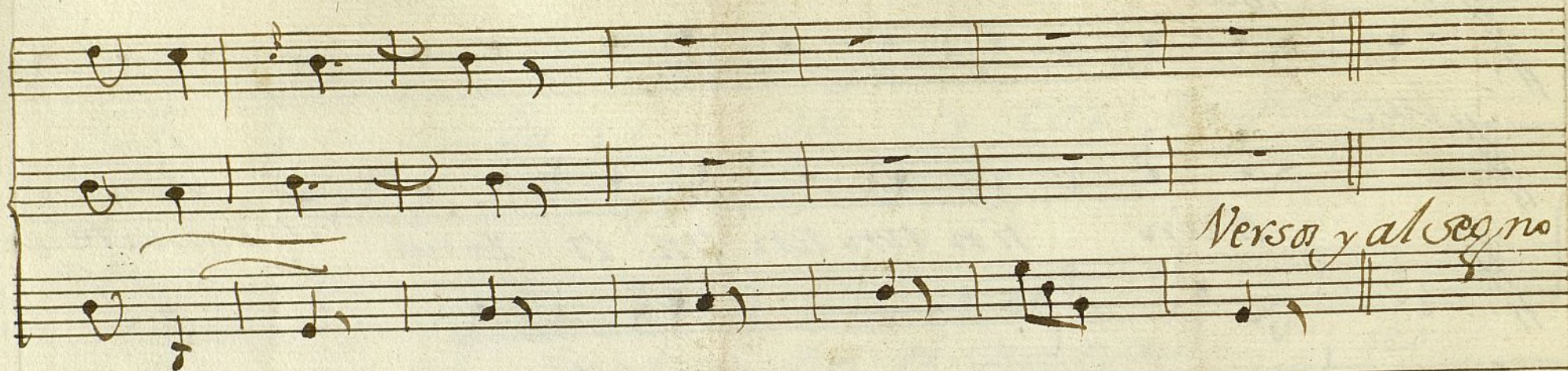
Es — el monstuo dela moda un — a

nimal tan tremendo que — se — traga los cau

Handwritten musical score on aged paper, featuring six systems of staves. The lyrics are in Spanish, written in a cursive hand. The music is written on five-line staves with various note values and rests. The lyrics are:
1. *delas de - Ma xi - dos y cor te sos*
2. *ti xin tin tin tin tin ti xana as*
3. *me sopi tas con dur por que me pa*
4. *xio mi Madre go - lo - sito*
5. *y Andalu - go lo sito y anda*
6. *merf.*
The paper shows signs of age, including yellowing and some staining.

Handwritten musical score on ten staves. The lyrics are written in Spanish and Portuguese. The notation includes various musical symbols such as notes, rests, and bar lines. The lyrics are as follows:

todos
luz
tin tin tin tin ti zana a somate a
as me sopi
se balcon
tas con luz y da consuelo atu amante con
por q. me pario mi Madre go
tu lo cari ta de sol con
sito y anda luz go
merf.



Verso y al segno