

Leg.º 1.º Num.º 9.

+

Musica del Sainete

el Alcalde Lego;

//

Del S.º Llerena;

65-38

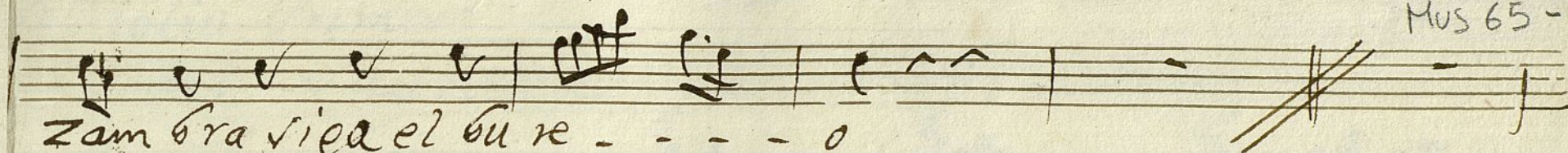
Segui.

Allegretto

Mientras sale ele gi - - - do Alcalde nuevo -

Alcal de nue bo - - - siga chicas la
viva la ga la - - - y la chula da

zambora - - - siga el bu re - - - o siga chicas la
viva - - - de los que can - - - tan y la chula da



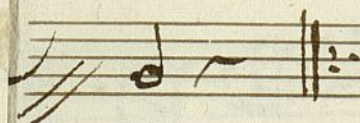
Zamora viva el bu re - - - - o

Viva de los que can - - - - tan

Allegro



Vexos, y se Vexiten



Ayuntamiento de Madrid

1200055446

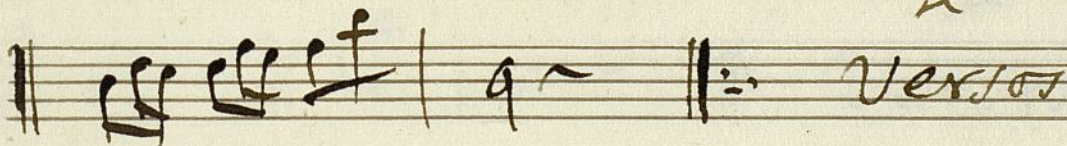
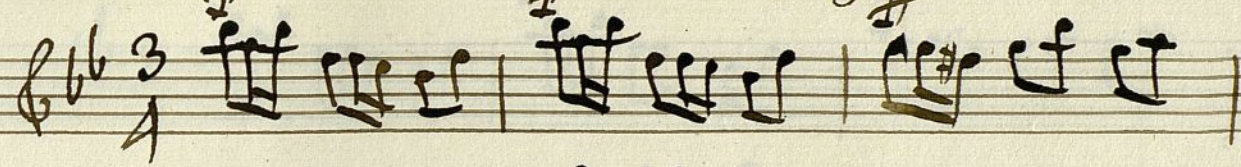
Violin Primero

Mus 65-38

del Saynete; el Alcalde Lego:

Segui.

Allegretto



Se Repiten

Violin Primero

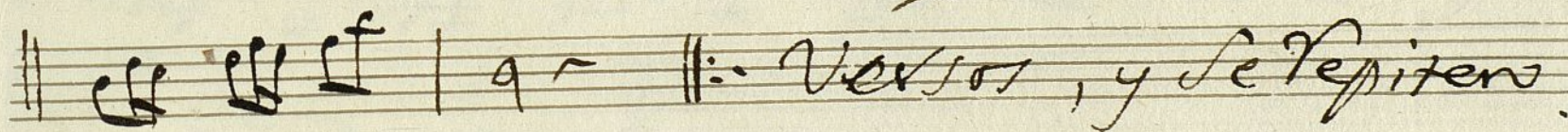
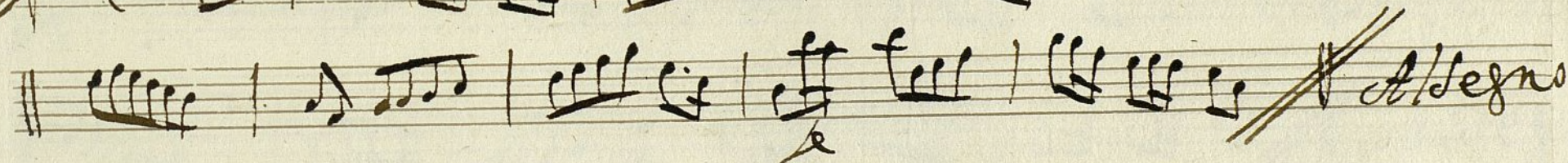
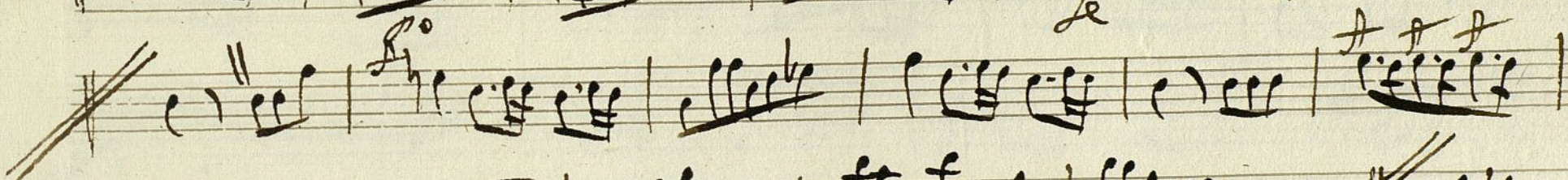
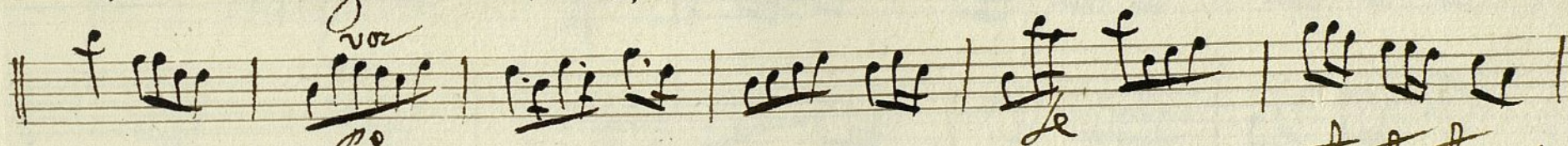
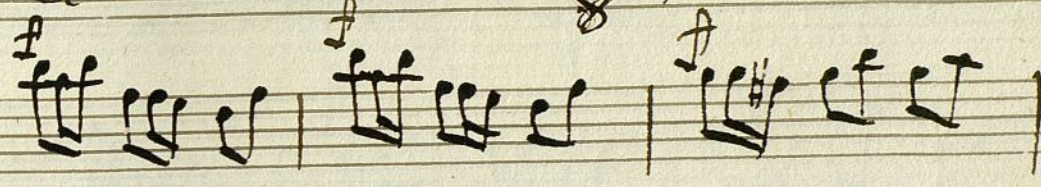
Mus 65-38

del Saynete: el Alcalde Legos;

Segu.

Allegretto

$\& \flat \frac{3}{4}$



Ayuntamiento de Madrid

12000 SS 446

Violin Segundo.

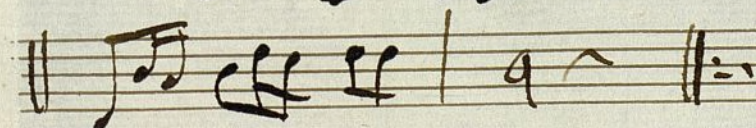
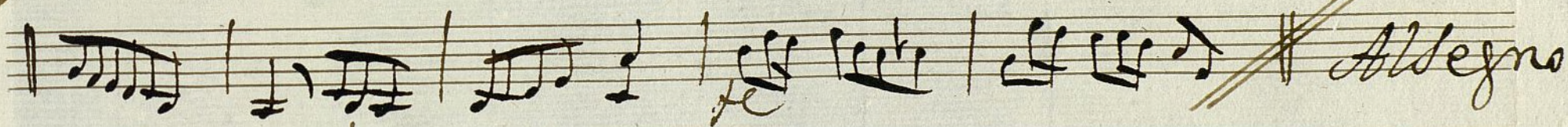
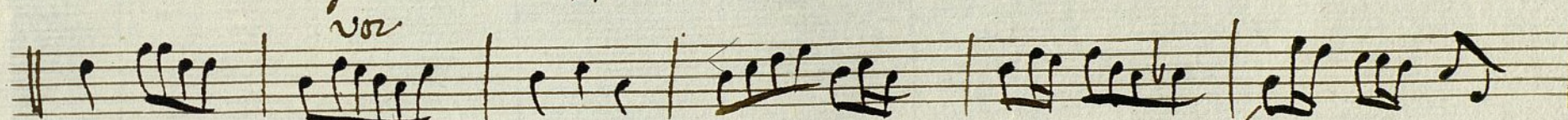
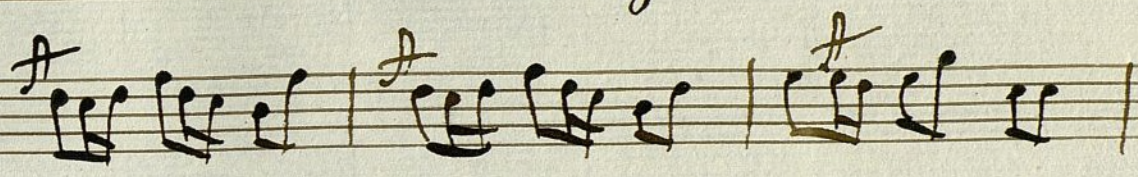
Mus 65-38

Del Saynete: el Alcalde Lego:

Segui!

Allegretto

$\frac{3}{4}$



Se repiten

Violin Segundo

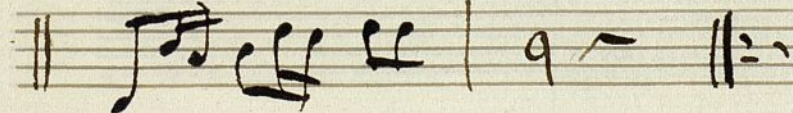
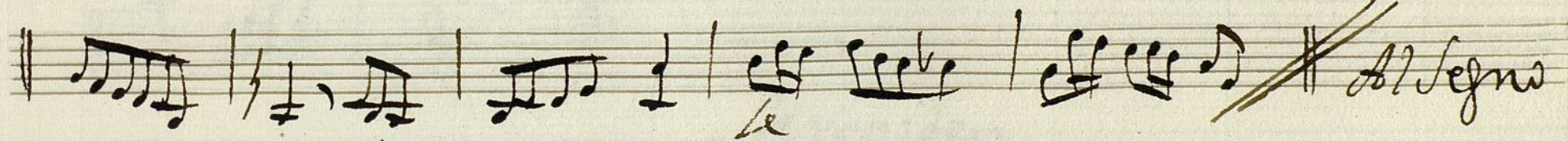
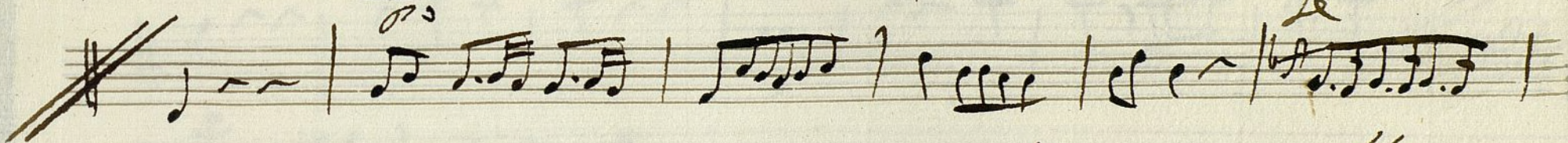
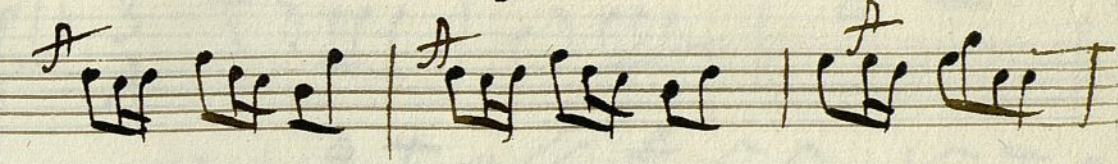
Mus 65-38

del Saynete; el Alcalde Lego;

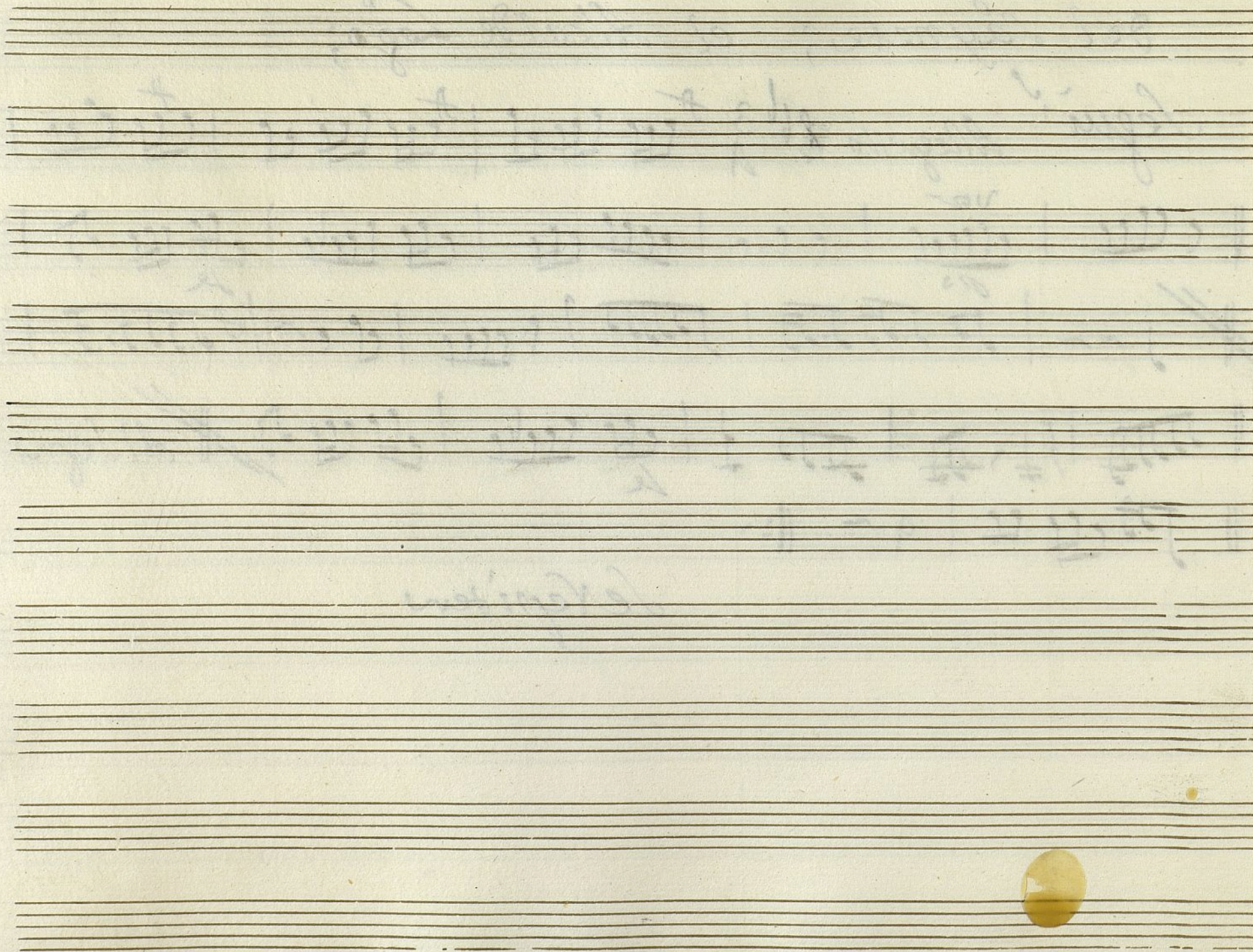
Segu!

Allegretto

3/4



Se Repiten



Oboe Primero

Mus 65-38

del Saynete; el Alcalde Lego:

Segui!

Allegretto

$\text{F}^{\flat}\text{ } \frac{3}{4}$

f 1 ||| 1 ||| 1 9 T |

f ||| 1 ||| ^{vo} 1 ||| 1 ||| 9 T # f ^ ^ | ^ T c |

1 || 1 ^ ^ | ^ f f | f ^ ^ | . . | ^ ^ T | f 1 ||| 9 T # ~~Allegro~~

1 || f ||| 1 ^ ||:

Se Repiten

Ayuntamiento de Madrid

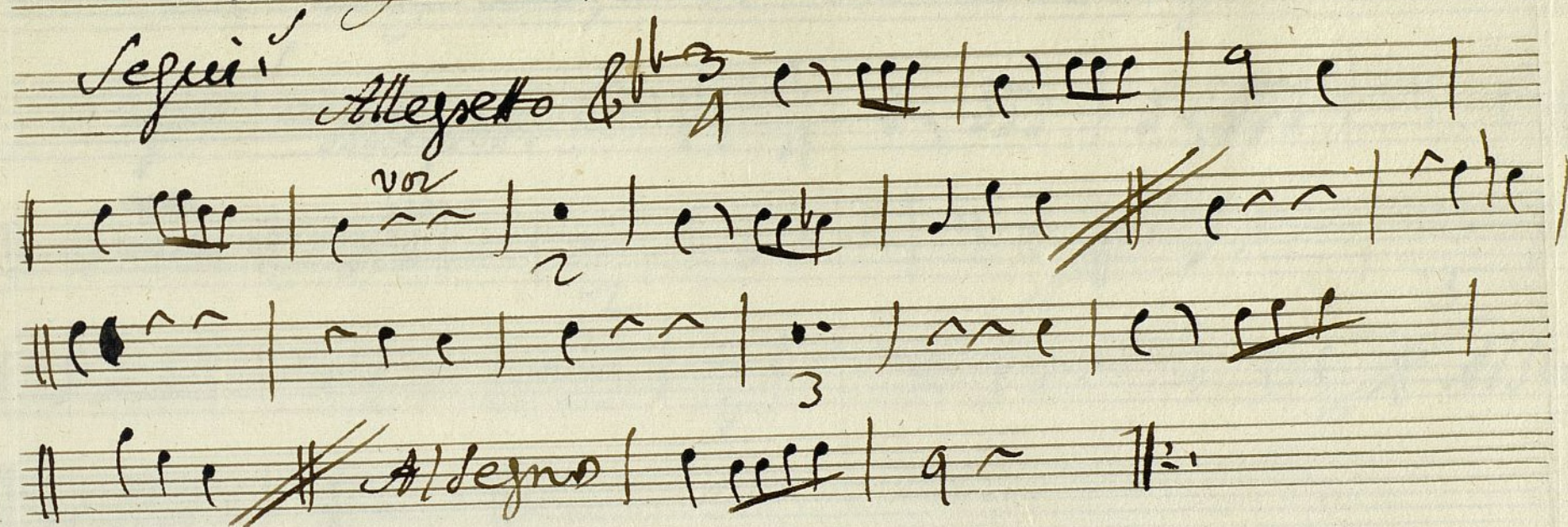
12 000 55446

oboe Segundo

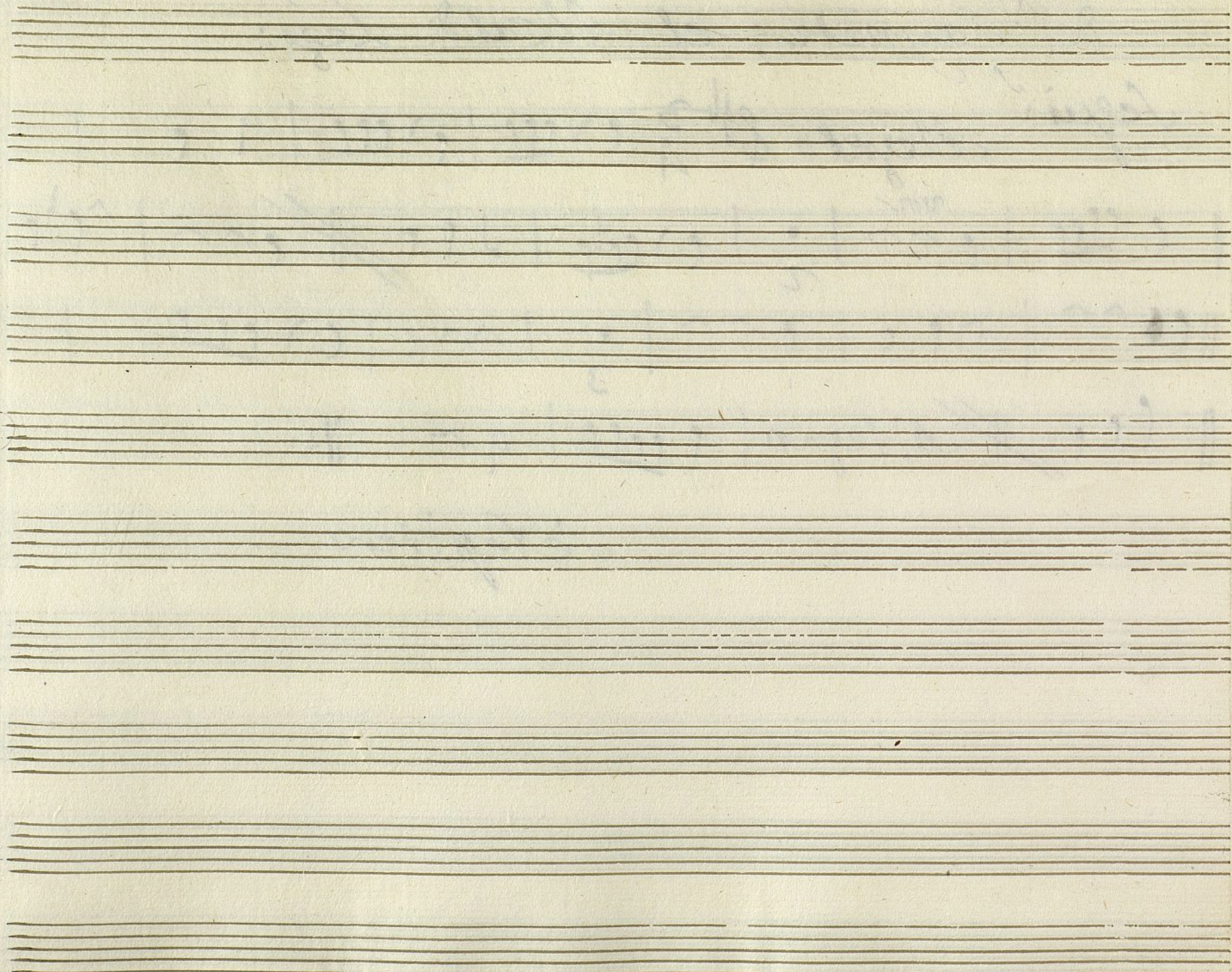
del Saynete; el Alcalde Legos;

Segui!

Allegretto



Se Repiten



Ayuntamiento de Madrid

1200055446

Trompa Primera +

MVS 65-38

del Saynete; el Alcalde Lego:

Segu: ^s

Allegretto

$C: 1\frac{1}{4} \frac{3}{4}$

$\frac{3}{4}$

$\frac{3}{4}$

$\frac{3}{4}$

$\frac{3}{4}$

$\frac{3}{4}$

$\frac{3}{4}$

$\frac{3}{4}$

$\frac{3}{4}$

$\frac{3}{4}$

$\frac{3}{4}$

$\frac{3}{4}$

$\frac{3}{4}$

$\frac{3}{4}$

$\frac{3}{4}$

$\frac{3}{4}$

$\frac{3}{4}$

$\frac{3}{4}$

$\frac{3}{4}$

$\frac{3}{4}$

$\frac{3}{4}$

$\frac{3}{4}$

$\frac{3}{4}$

$\frac{3}{4}$

$\frac{3}{4}$

$\frac{3}{4}$

$\frac{3}{4}$

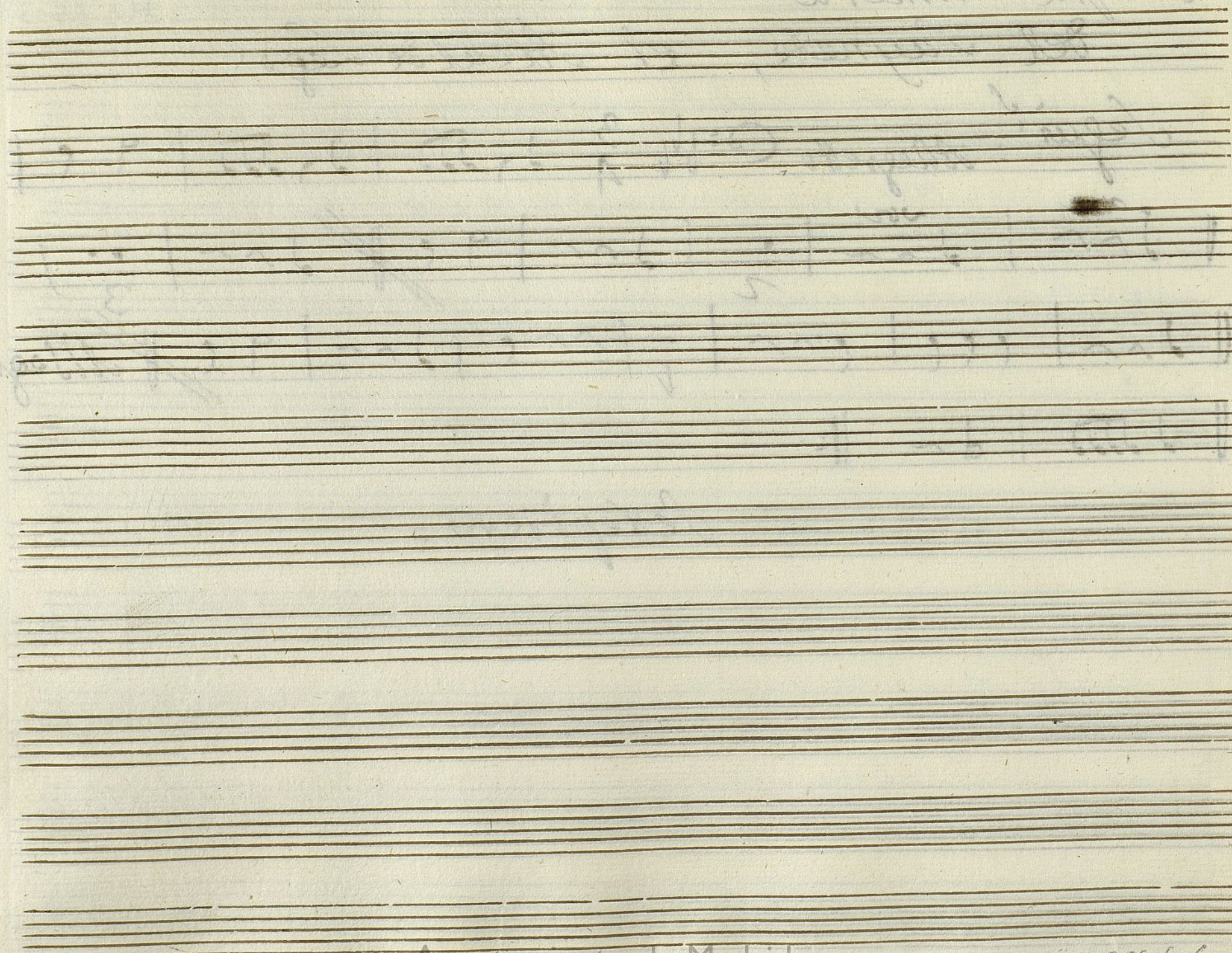
$\frac{3}{4}$

$\frac{3}{4}$

$\frac{3}{4}$

$\frac{3}{4}$

Repeten



Mus 65-38

Segue:

Allegretto

$\alpha = 1/6$

3
A

♪

The first staff of musical notation for the song 'The Bird Song'. It features a treble clef, a key signature of one sharp (F#), and a 4/4 time signature. The melody begins with a quarter note on G4, followed by a quarter note on A4, and then a quarter note on B4. The staff continues with a quarter note on C5, a quarter note on B4, and a quarter note on A4. The melody concludes with a quarter note on G4. The lyrics 'The Bird Song' are written below the staff.



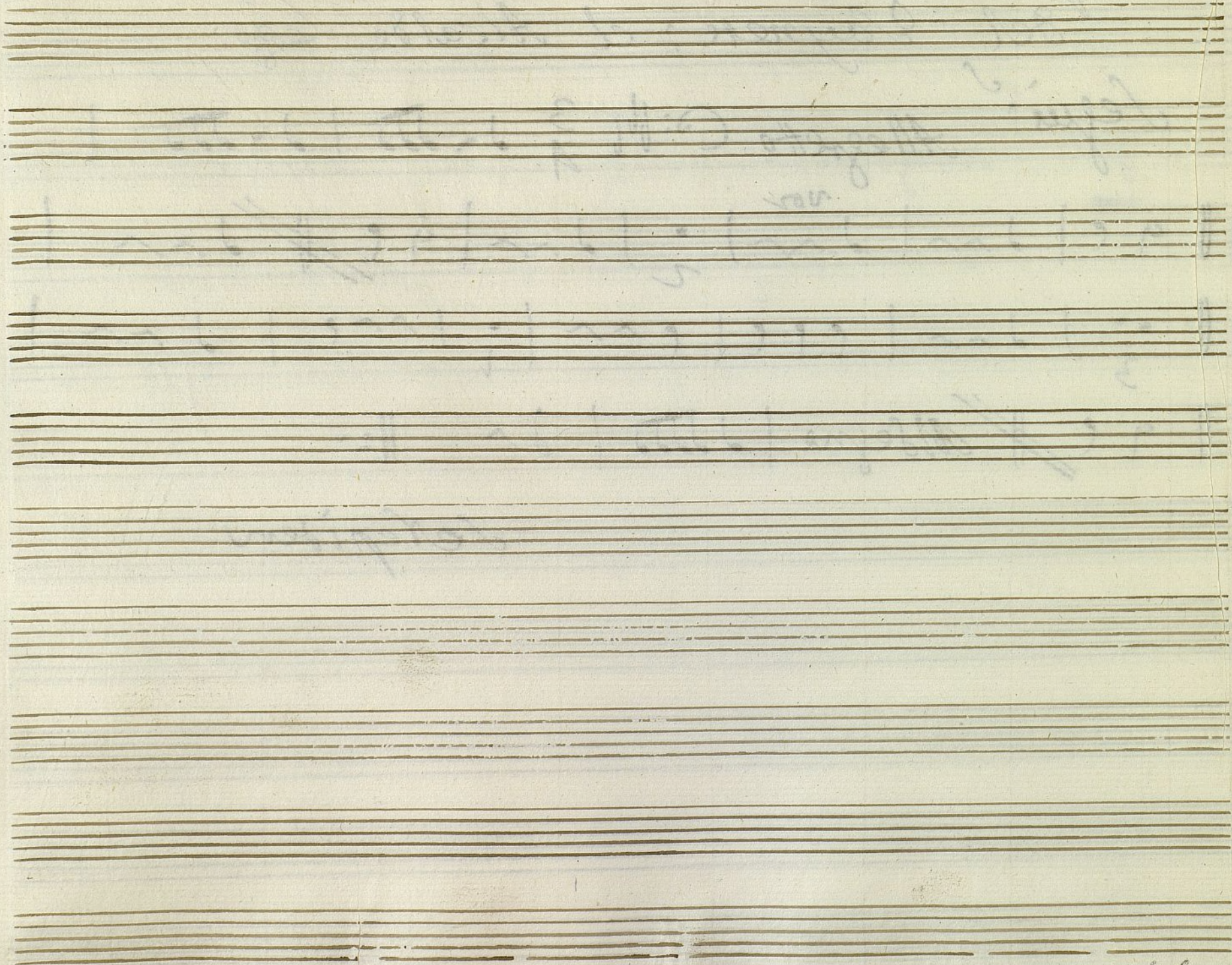
五

[illegible]

Handwritten musical notation on a five-line staff. The notation consists of several measures separated by vertical bar lines. The notes are written in a shorthand style, with some notes having stems and others being beamed together. A double bar line with repeat dots is present. A small number '3' is written below the first measure.

9 ~~c~~ // *Allegro* | ♩ ♩ ♩ | ♩ ♩ ♩ ||

Seepiten



Contrabajo:

Mus 65-38

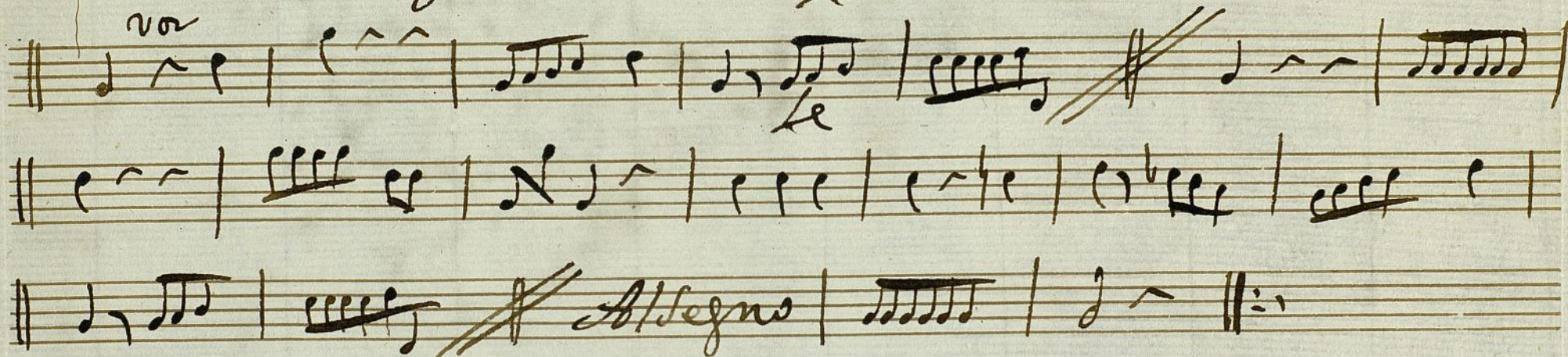
del Saynete; el Alcalde Lego:

Segui:

Allegretto

3/4

le



Se Repiten

Ayuntamiento de Madrid

1200655446