

Leg. 1.º n.º 51. 80

Leg. 1.º n.º 51.

Mus 65-13

+

Musica

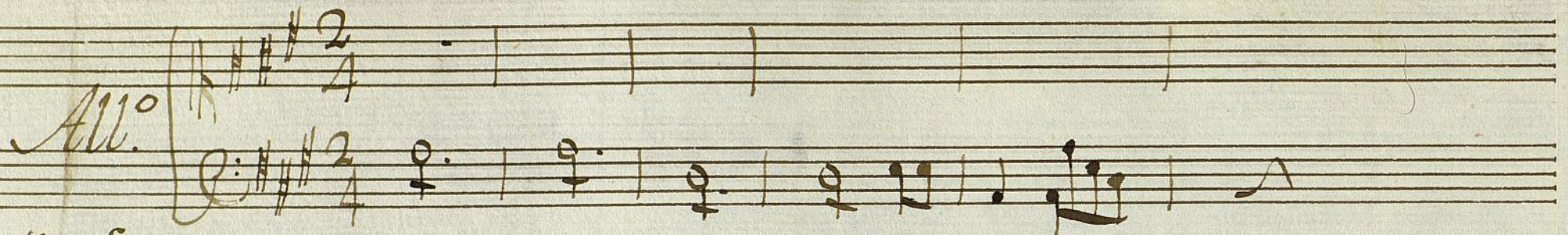
50

en el Sainete

Ceder la Novia

De Laserna.

All.^o

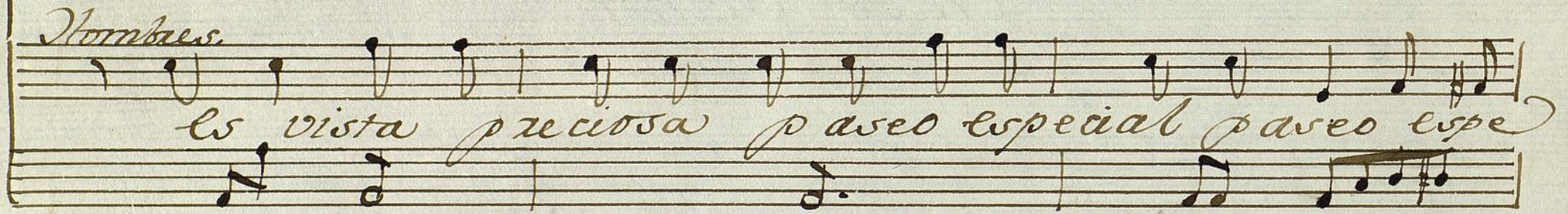


Mug.^s



Hombres.

Es vista preciosa paseo especial paseo espe



cial el delas de licias ge ba hasta el ca-



Handwritten musical score on ten staves. The lyrics are written in Spanish and are interspersed between the staves. The notation includes various musical symbols such as notes, rests, and bar lines. The paper is aged and slightly discolored.

di coches v.

nal que ba

sias di mucho paxdal ya baxios que

al agua

verden se escucha bocear se

Naranjas, bollos marzapán, barquillos tostones, y cien cosas

mas -

la vista pre

ciosa paseo lope cial paseo lope cial

el delas de licias q. e ba hasta el canal que

al Canal.

Ayuntamiento de Madrid

12 000 55 421

+

Clave.

Musica

En el Sainete.

Ceder la Novia.

De Laseana.

All.^o

Mug.^s

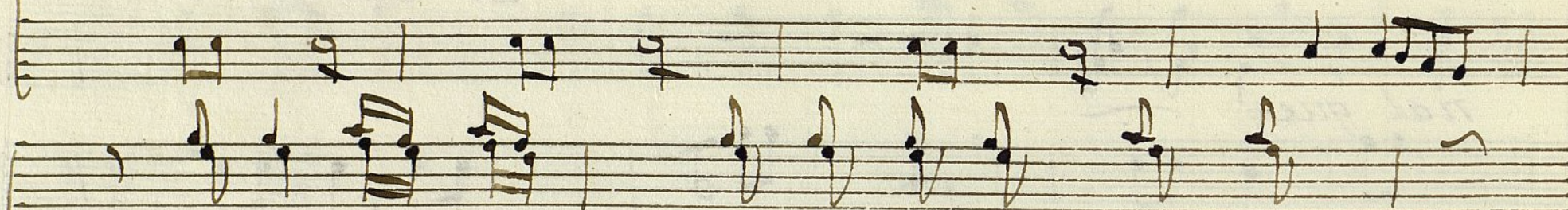
Hombres.

Es vista pre ciosa paseo espe- cial paseo espe-
cial el delas de licias q. ba hasta el ca-

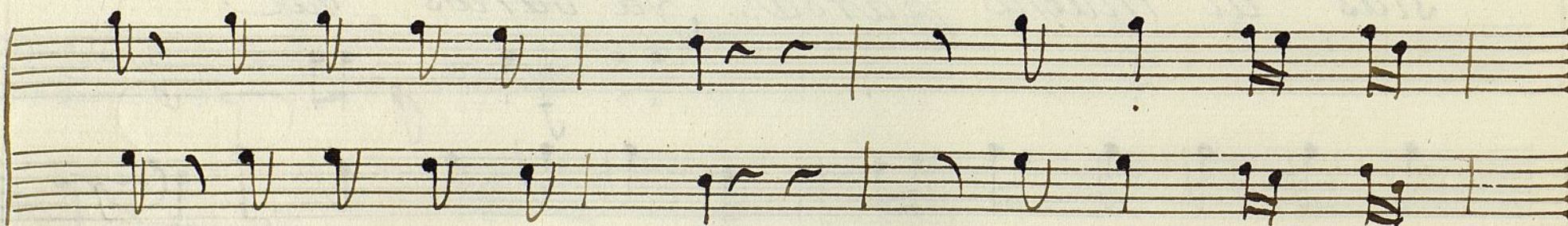
Ayuntamiento de Madrid

Handwritten musical score on ten staves. The lyrics are written in Spanish. The notation includes various musical symbols such as notes, rests, and bar lines. The lyrics are:
nal que
ai Cochres
sias ai mucho parda ya barios que
venden se escucha bocean se

al agua naranjas mazapan, barquillos tottones, y cien cosas mas.



Es vista pre ciosa paseo espe.



cial paseo

el de las de-

ma.

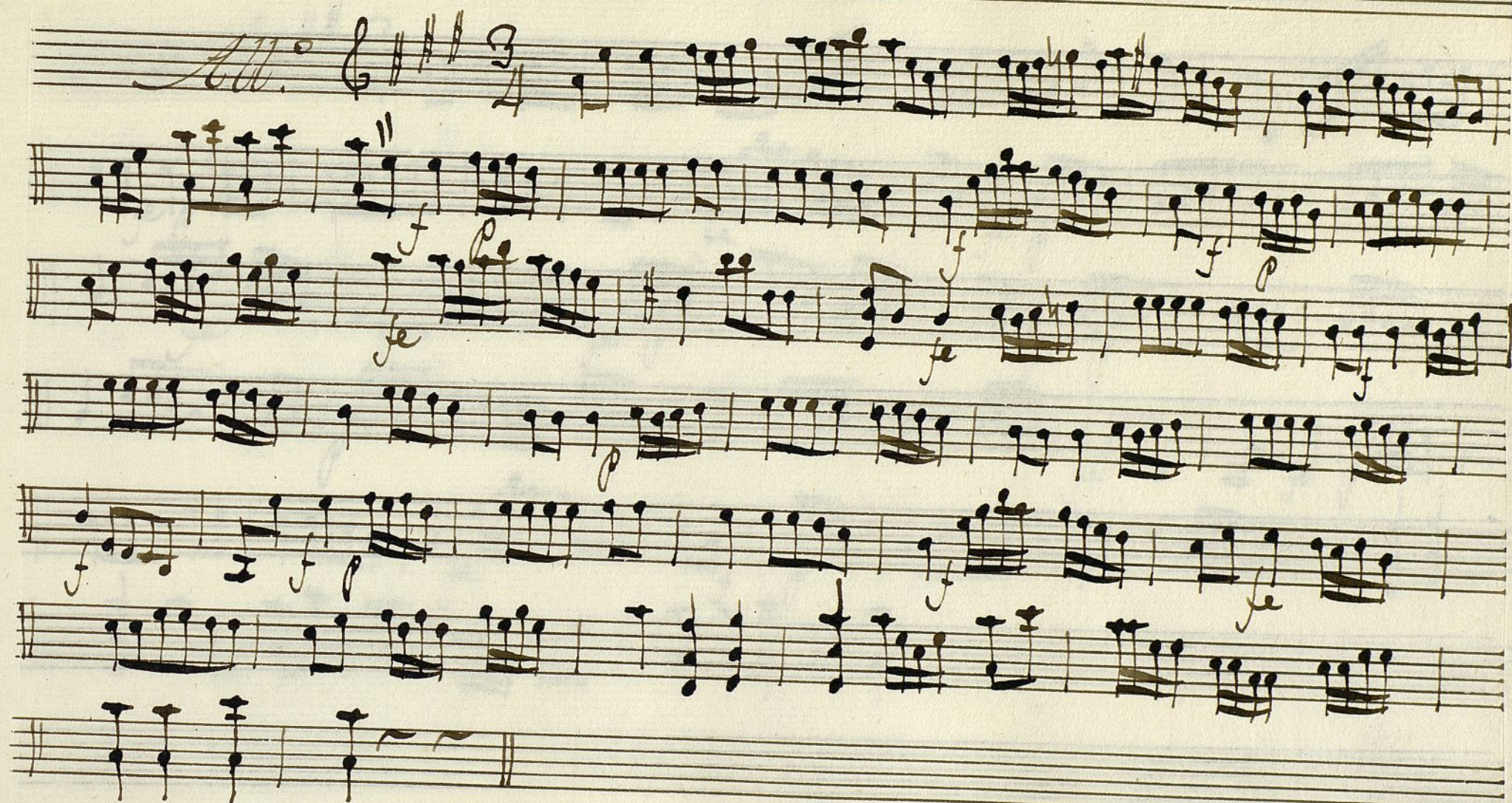
licias que va hasta el Canal que al ca-

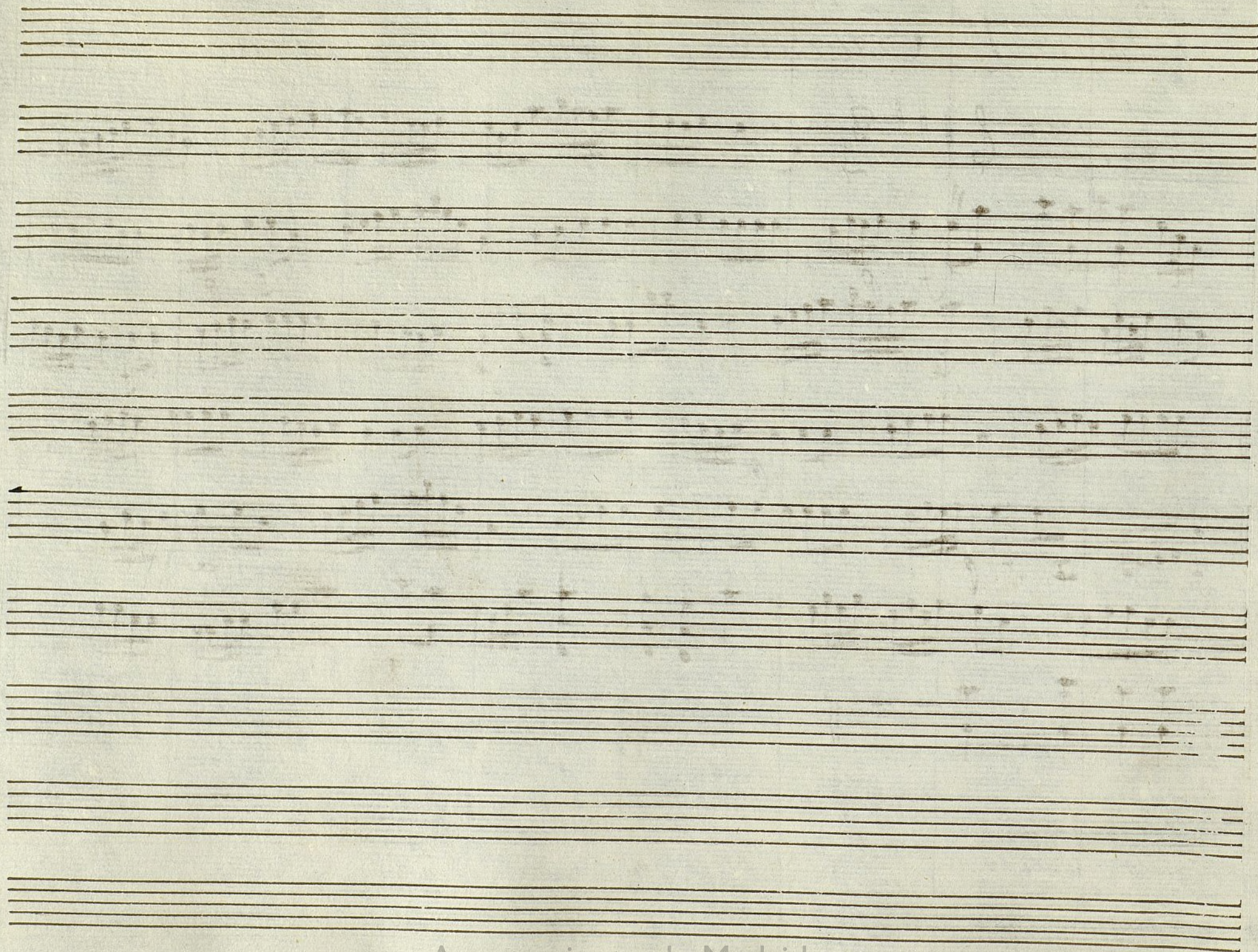
mal.

Ayuntamiento de Madrid

1200055421

Violin 1.º Sainete Ceder la Nochia



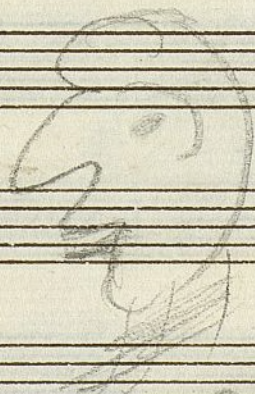
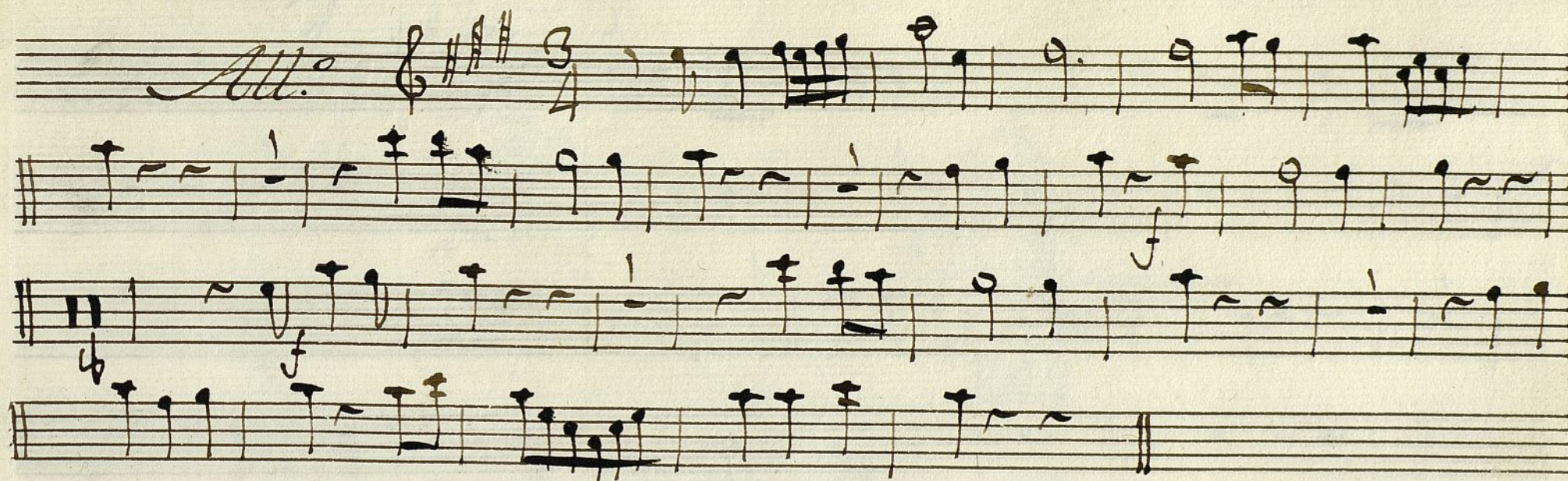


t

Violin 2^a Sainete Ceder la Nochia

Handwritten musical score for Violin 2^a Sainete Ceder la Nochia. The score is written on a single staff with a treble clef, a key signature of three sharps (F#, C#, G#), and a 3/4 time signature. The tempo marking is "Allegro". The music consists of a single melodic line with various ornaments and dynamics. The notation includes many slurs, ties, and dynamic markings such as *fe* (f), *p* (piano), and *ff* (fortissimo). The piece ends with a double bar line and a repeat sign.

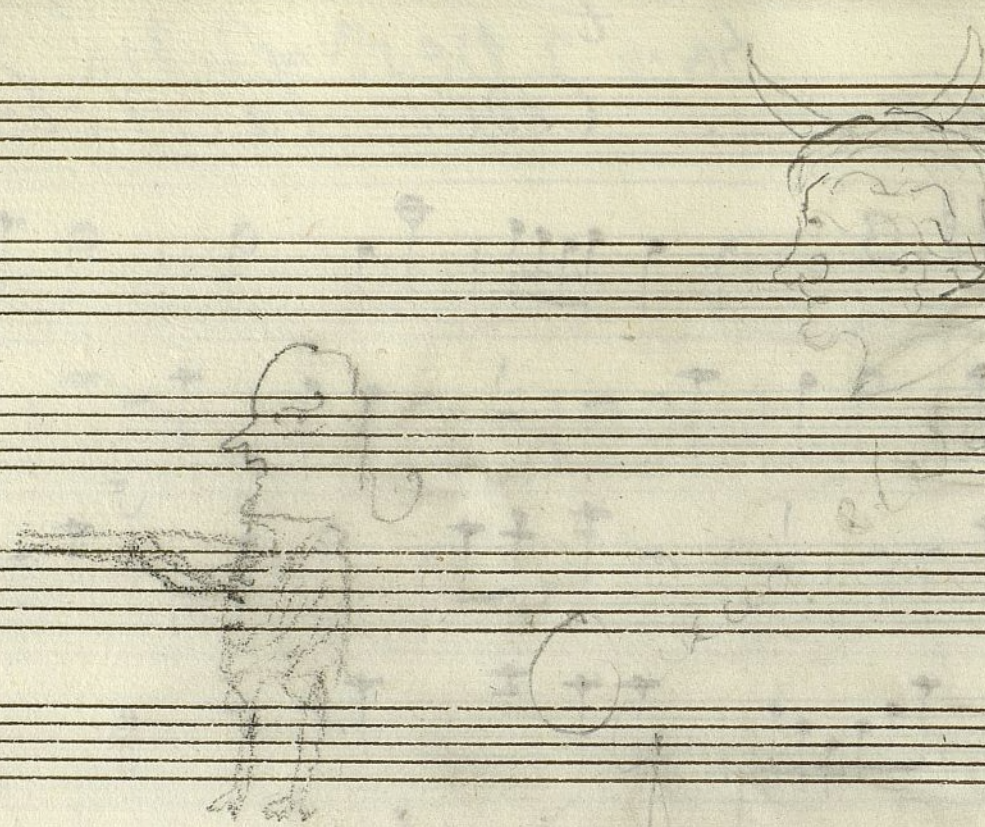
Oboe 1^o Sainete. ^{50 y 2^a vez y 2^a vez mas} Ceder la Nochia



Antonio Garcia

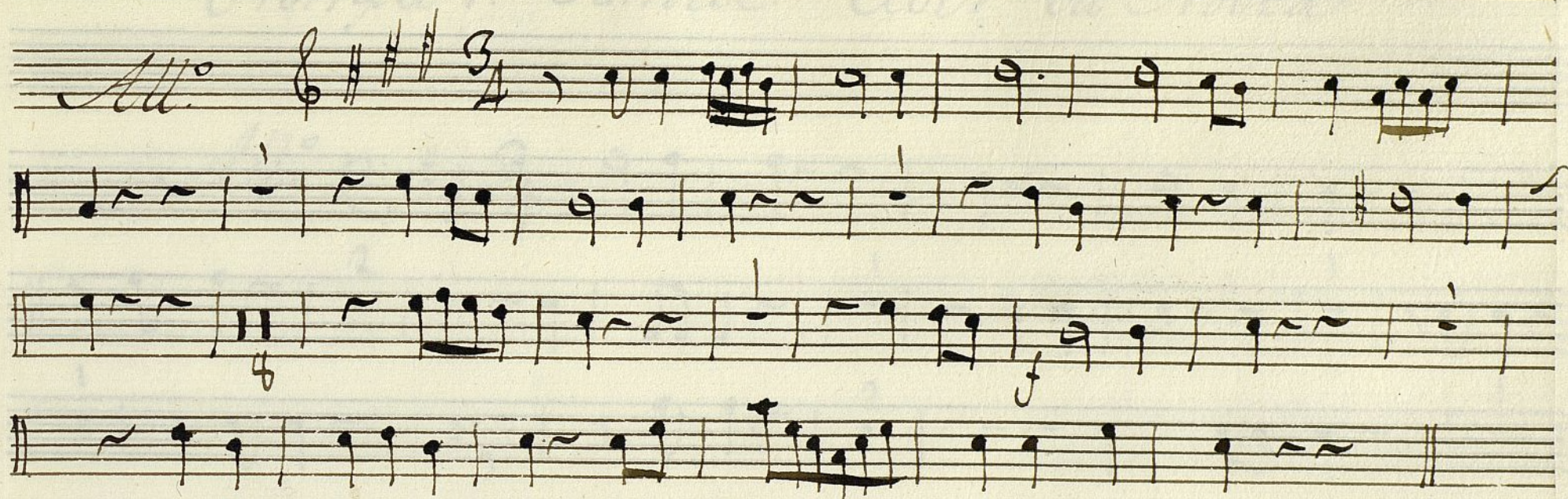
quando se Casa Covindara
a Monja

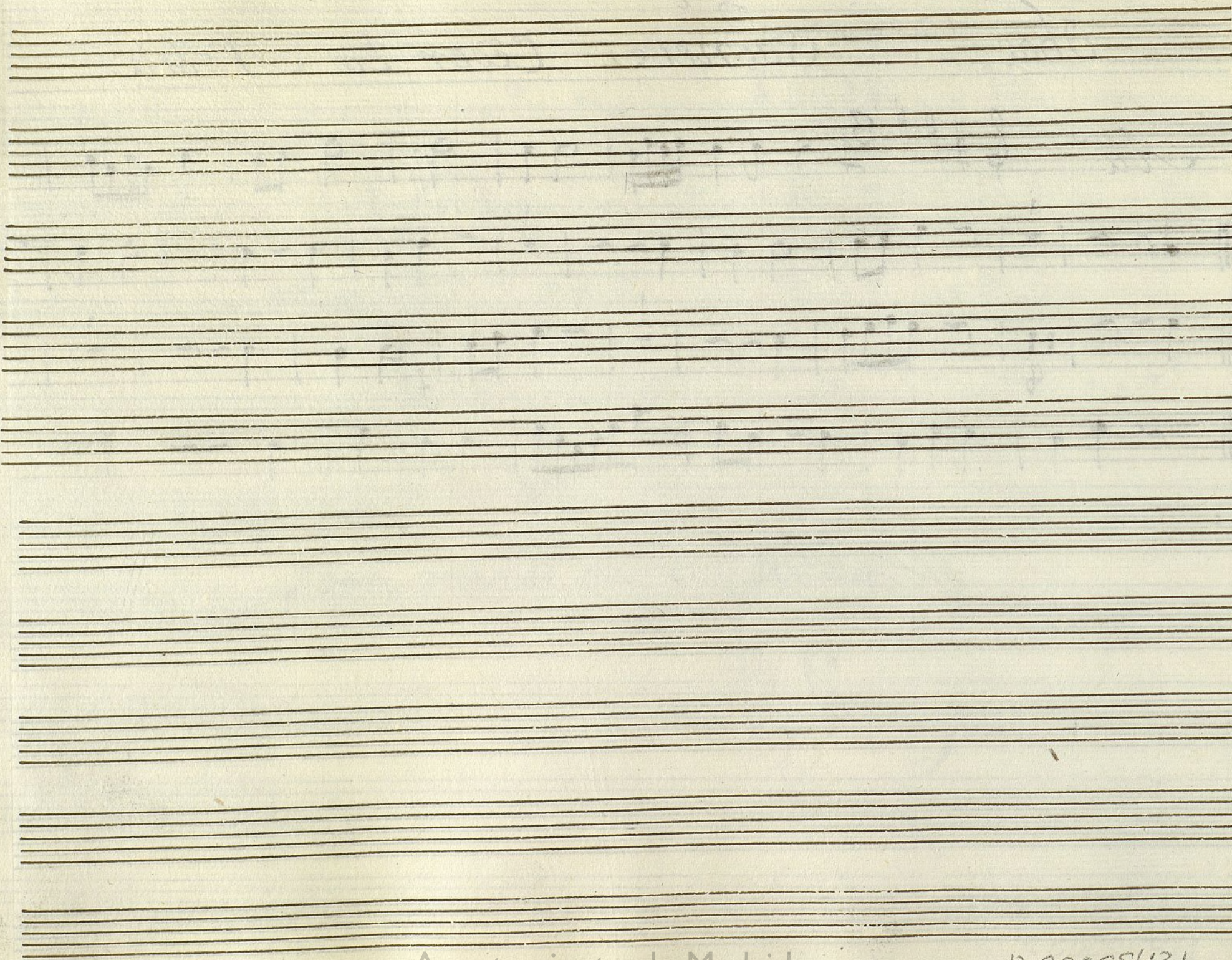
Ayuntamiento de Madrid



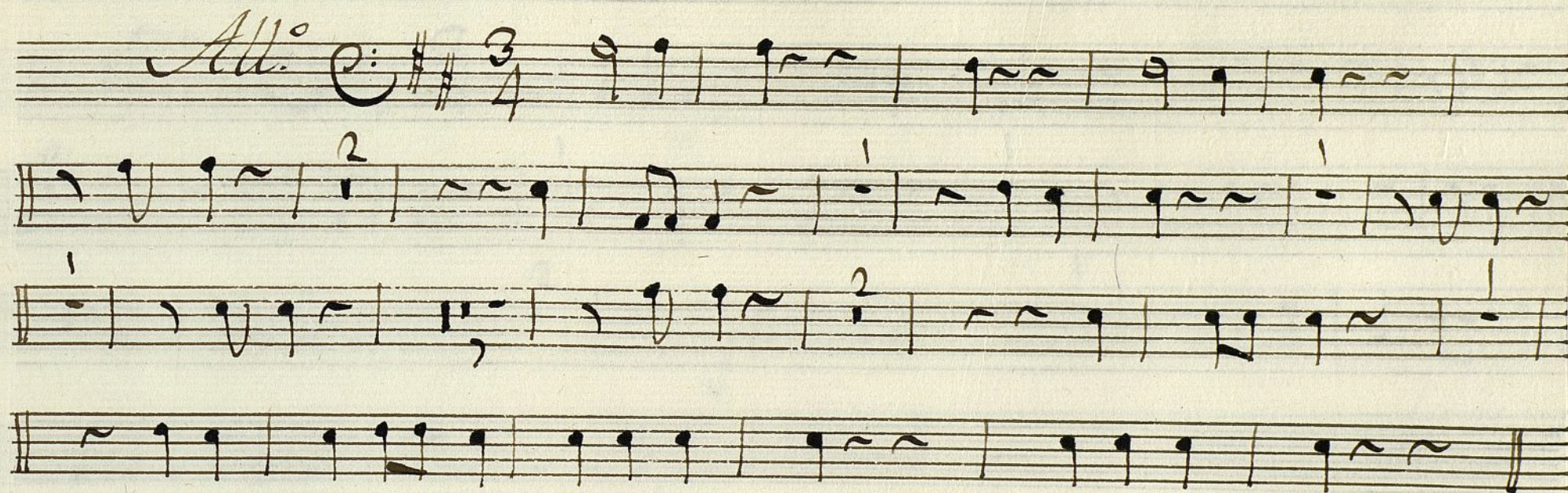
Leon quando va a Casa

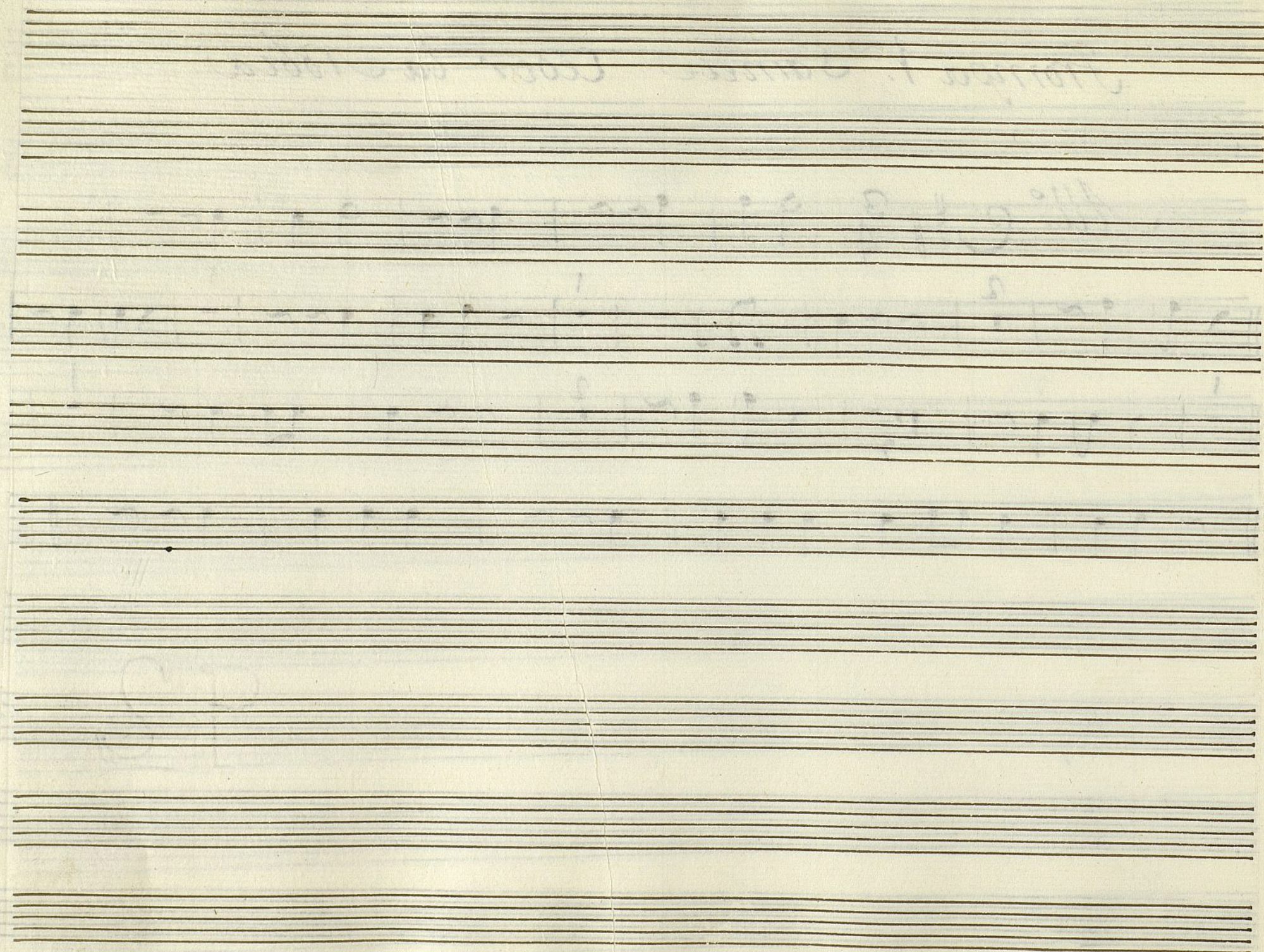
Oboe 2^o ^{7^t} Sainete Ceder la Nochia



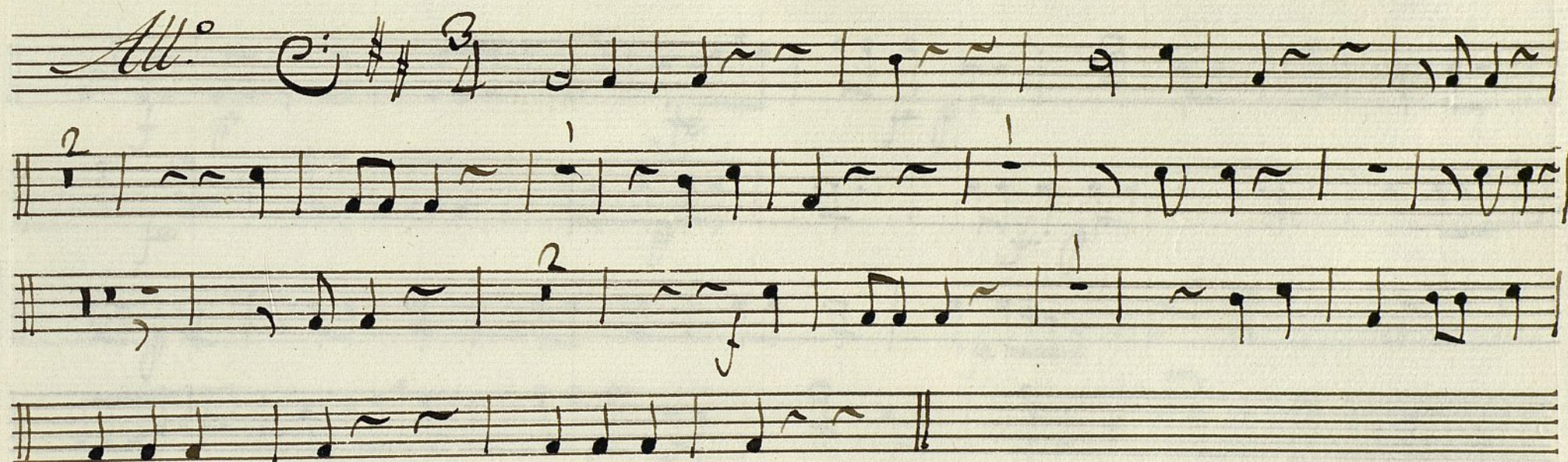


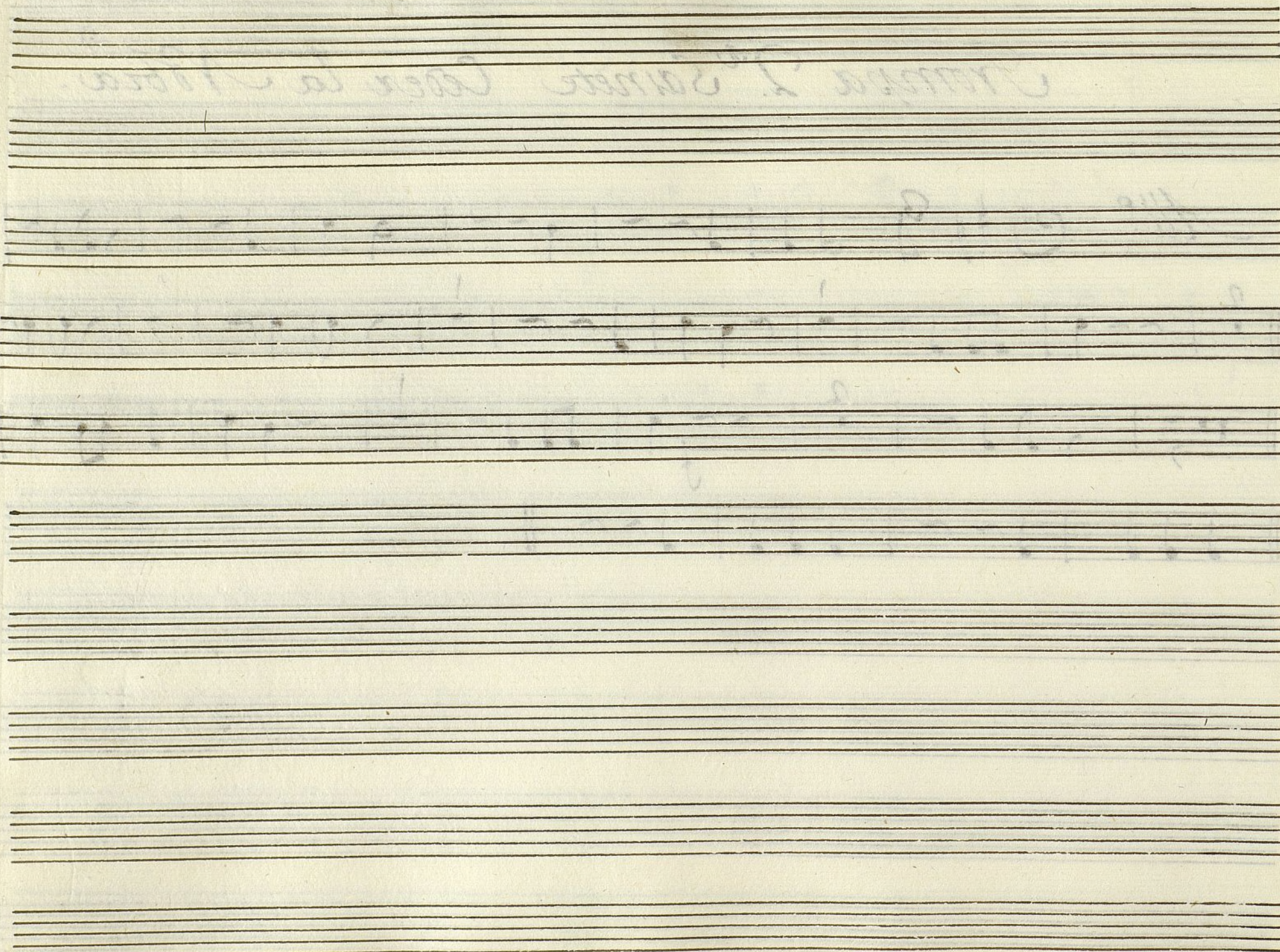
Fronpa 1.^a Sainete Ceder la Nochia





Trompa 2.^a Sainete Ceder la Nochia.





Bafo Sainete. Ceder la Nochia

