

Leg. 3 n. 36 ~~17~~

Mus 9-2

Leg. 1.º n.º 20

t

= Com<sup>a</sup> =

20

Del Galeote

De Laserna

ff



marcha primera y si que el oro

Manuela Pulpillo

All.

oro

A tarif Gene

virgo

oro

nuestro Rei in victo

a clamen postrados y ob

Manuela

Lar 2.

oro

sequien rendidos

por justo y clemente.

Manuela

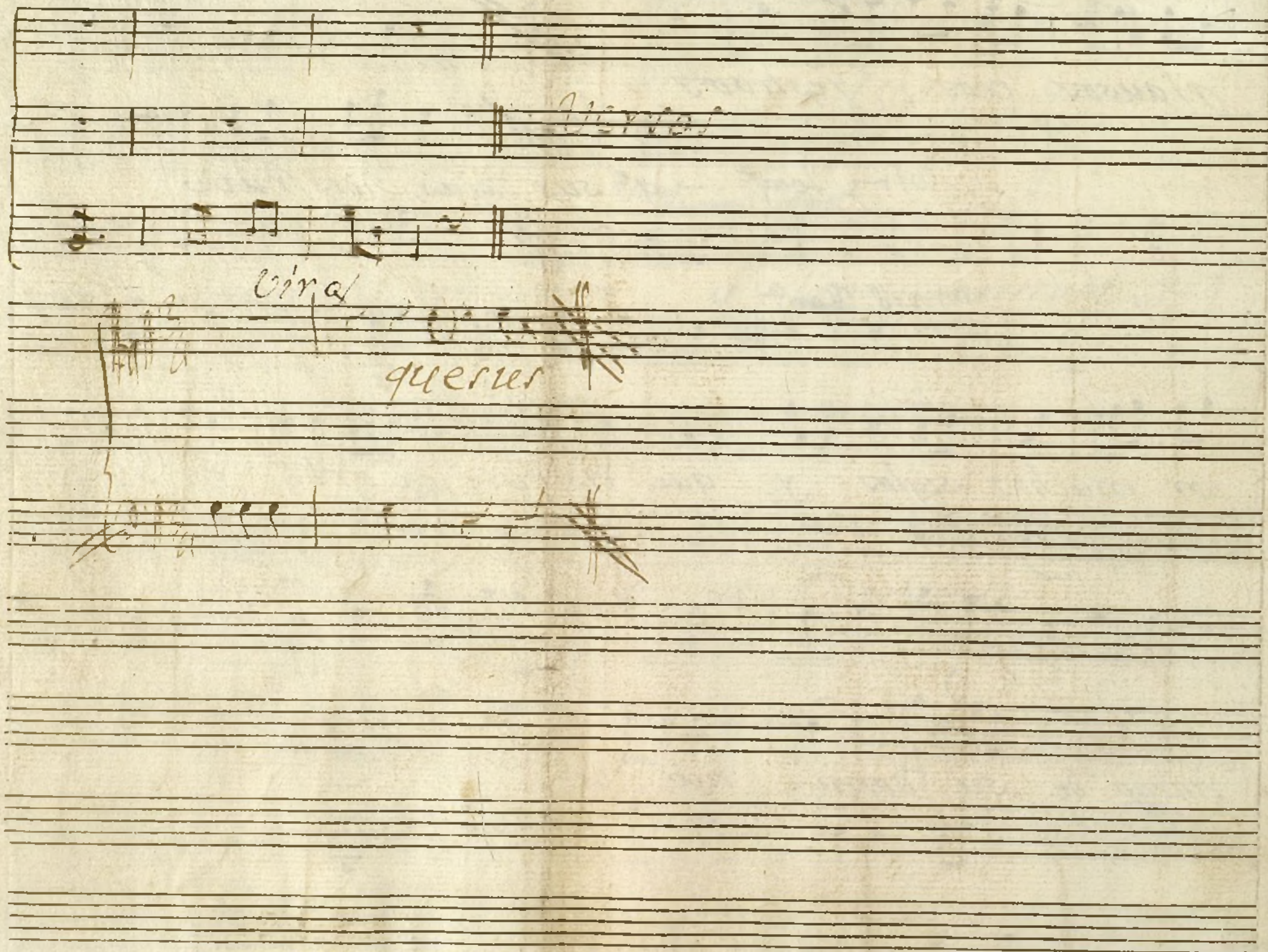
diciendo en sus a-

oy los Arge linos



plausos ecos festivos  
vir ~~loaf~~... q<sup>e</sup> sus ojos disfrute  
Vozes ~~Vozes~~  
por muchos siglos y que disfrute el orbe de su do-  
minio de su domi nio de







Clave.

Com<sup>a</sup>

Al Galante.

De Laserna.



*All<sup>to</sup>* *lo*

*All<sup>o</sup>*

*Oratorio Pulpido* *Viru Rivera*

A tarif gene roso nuestro Rei invicto a

clamen portrador y obsequieri reñidos por

Justo y clemente oy los Arce linos diciendo en sus a-

*Oratorio*



*Virgilia*  
plausos ecos, festivos q.<sup>e</sup> sus pias *disfrute* festivos

*1a 2*  
por muchos siglos y q.<sup>e</sup> disfrute el orbe de su do-

minio de su domi nio de

*Virgilia*  
Versos. que sus. ala *Virgilia*



Ayuntamiento de Madrid



*Violin 1<sup>o</sup> Corn. a del Galeote.*

*All.<sup>o</sup>*

*Verso.*



Ayuntamiento de Madrid



*Violin 1.º Corn.ª el Galante*

*All.<sup>o</sup>*

*p*

*fe*

*p*

*3*

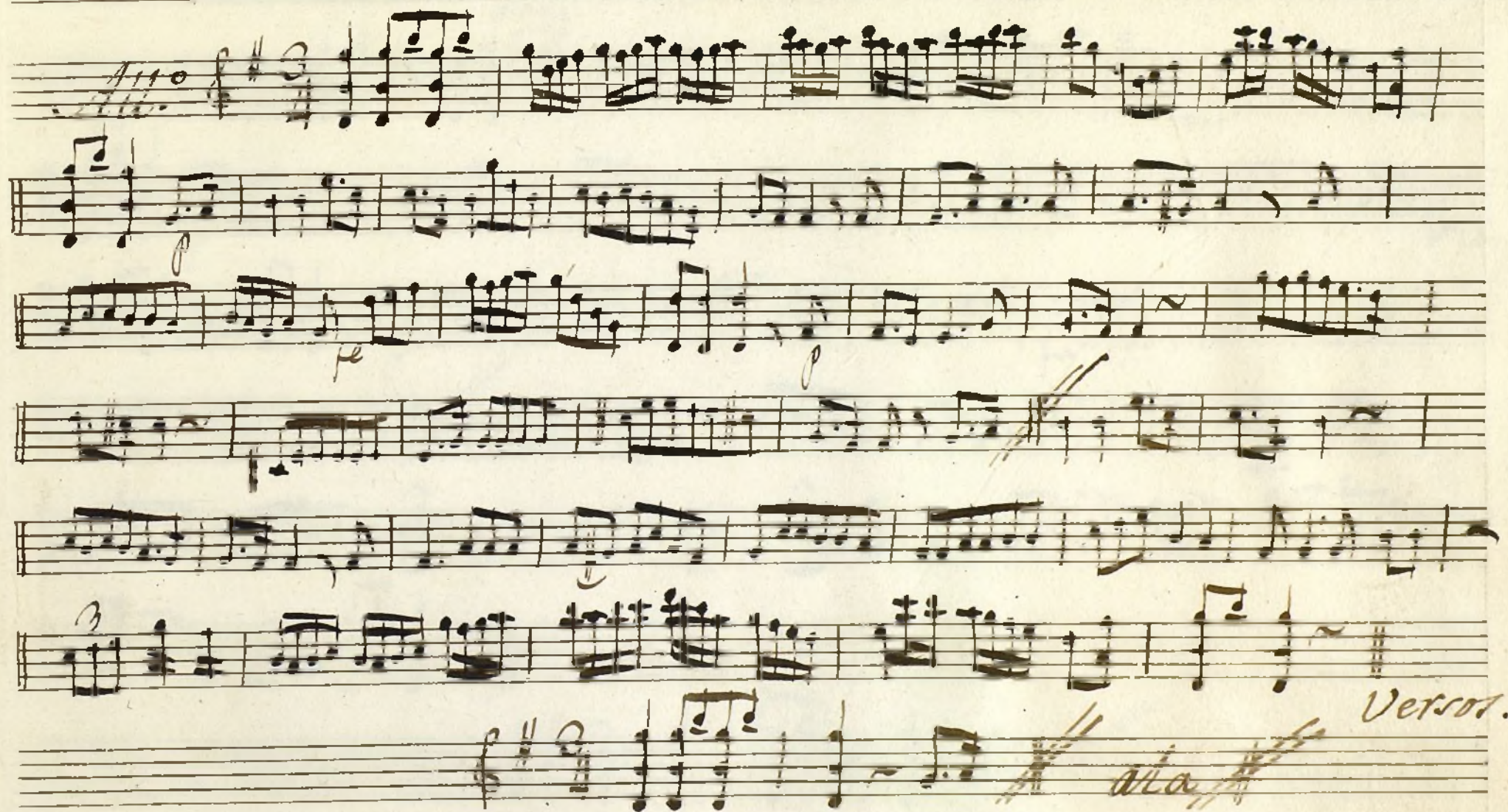
*Verso*

*3/4*

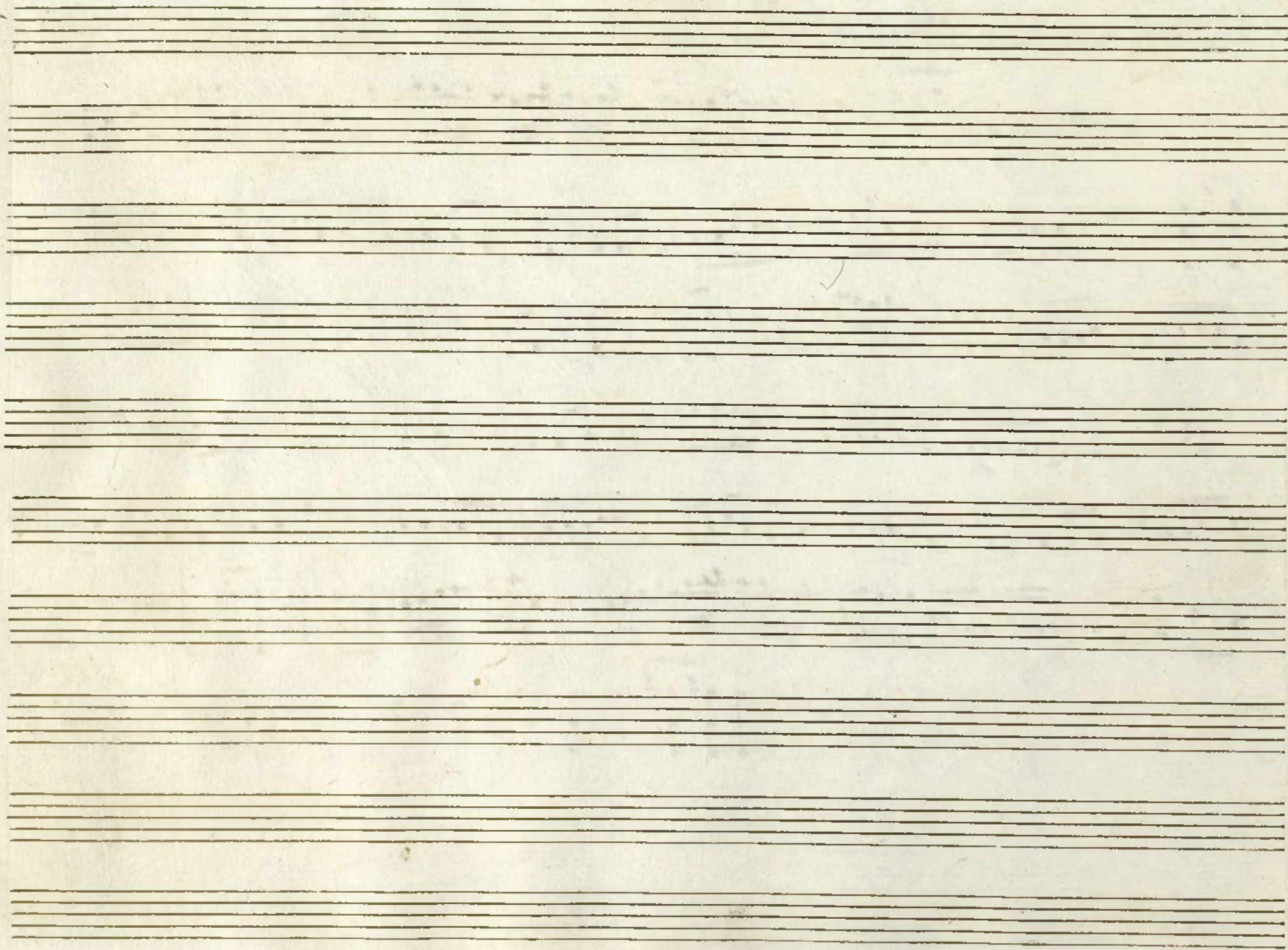


Ayuntamiento de Madrid



Violin 2. *Con. al Galante.*





Ayuntamiento de Madrid



t

Mus 9-2

Violin 2.º Con.º et Forte

Handwritten musical notation for Violin 2.º, Con.º et Forte. The notation is written on seven staves. The first staff begins with a treble clef, a key signature of one sharp (F#), and a 3/4 time signature. The music consists of various note values, including eighth and sixteenth notes, and rests. There are several dynamic markings, including 'p' (piano) and 'f' (forte). The notation is written in a cursive, handwritten style.

Verso

Handwritten musical notation for the 'Verso' section. It is written on a single staff, starting with a treble clef, a key signature of one sharp (F#), and a 3/4 time signature. The notation includes several notes and rests, with some parts crossed out with diagonal lines.

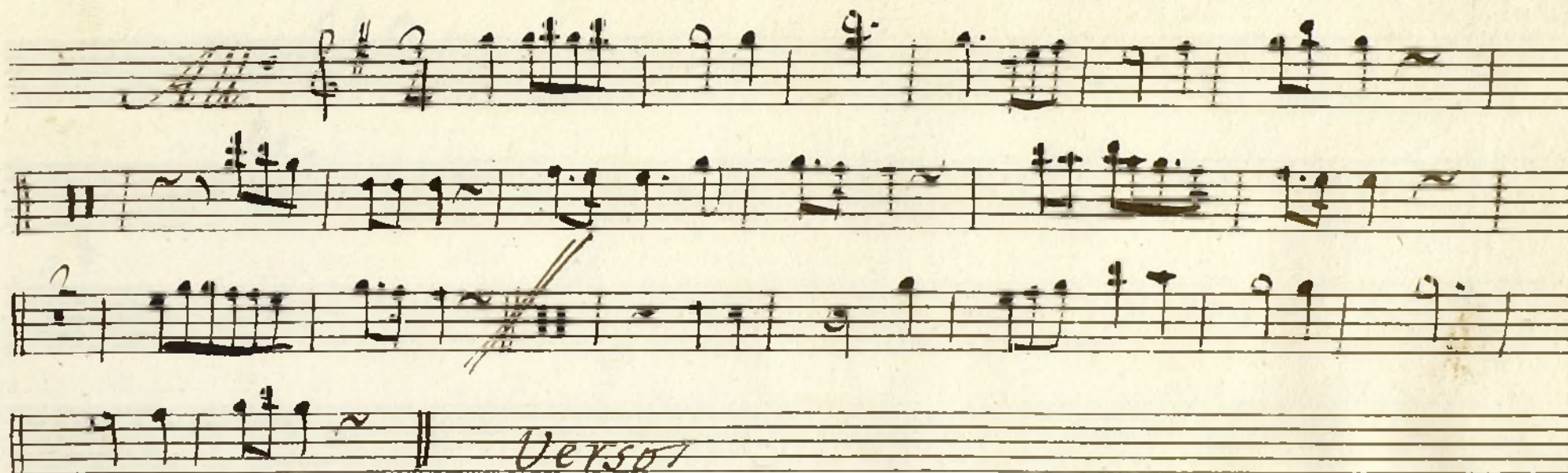




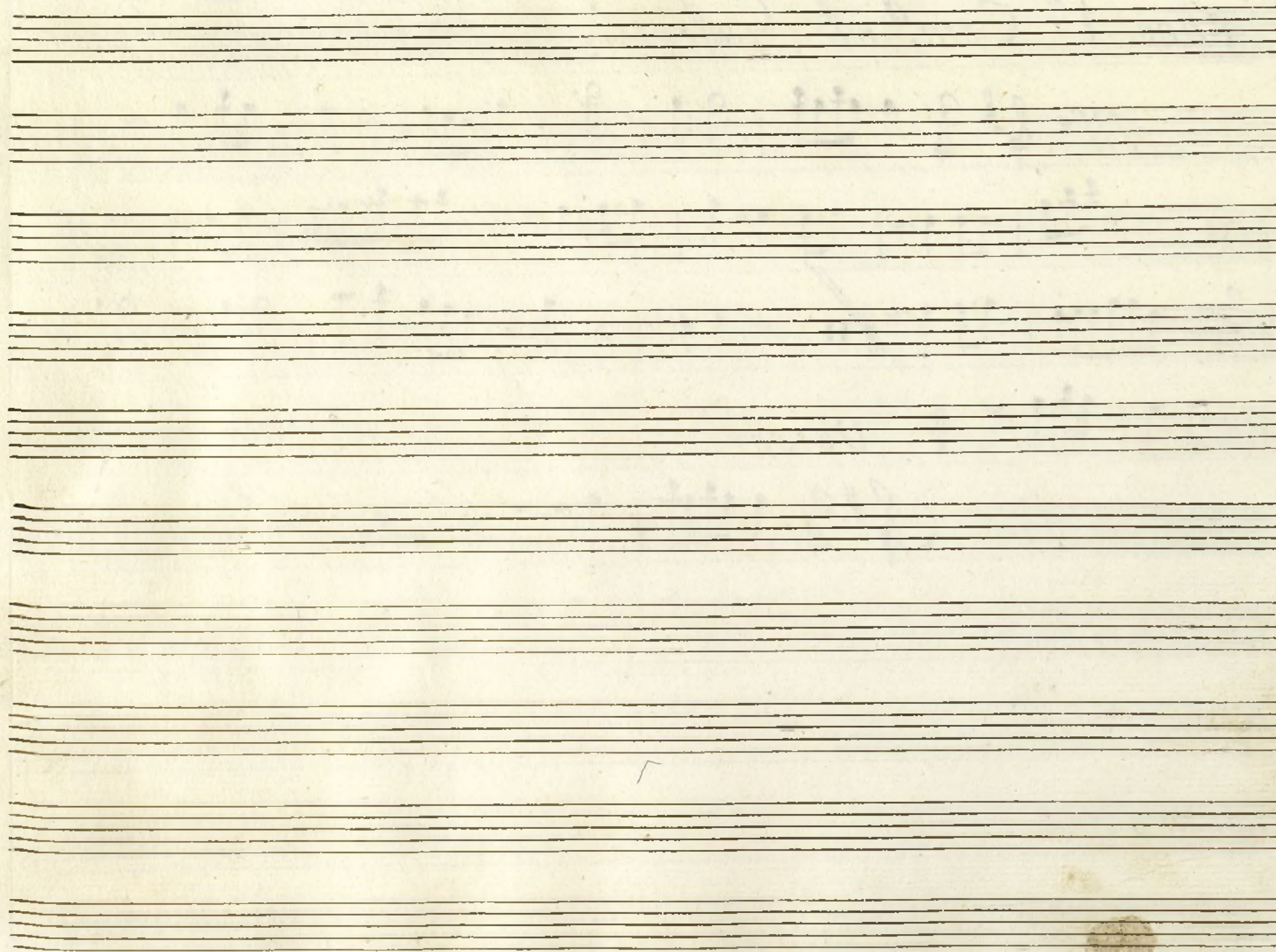


*Oboe 1<sup>o</sup> Cam. de Galeote.*

Mus 9-2







Ayuntamiento de Madrid



*Flöte 2.º Corn.ª A. Cabate.*

Mus 9-2

Handwritten musical notation on five staves. The first staff begins with a treble clef, a key signature of one sharp (F#), and a 3/4 time signature. The notation includes various note values, rests, and dynamic markings. A double bar line is present in the third staff, with a '4' written below it. A diagonal line is drawn through the fourth staff.

Handwritten musical notation on two staves. The first staff ends with a double bar line and the word *Versos* written in cursive. The second staff begins with a treble clef, a key signature of one sharp (F#), and a 3/4 time signature, followed by musical notation and a diagonal line.

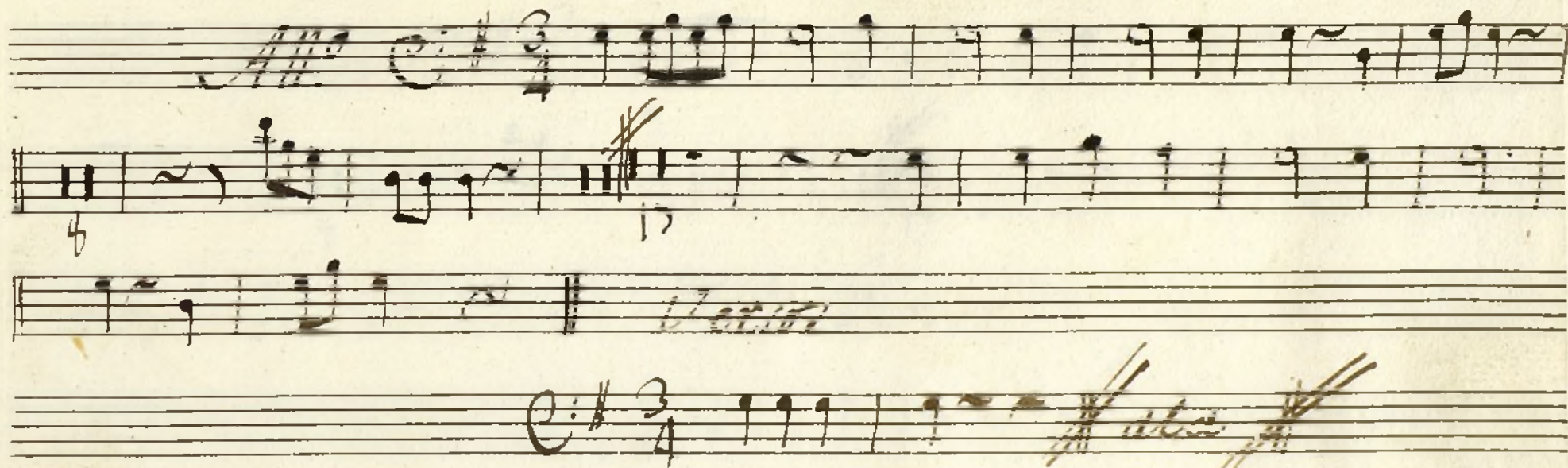


Ayuntamiento de Madrid



*Crompa 1.<sup>a</sup> Corn.<sup>a</sup> el Galeote.*

Núm 9-2





Ayuntamiento de Madrid

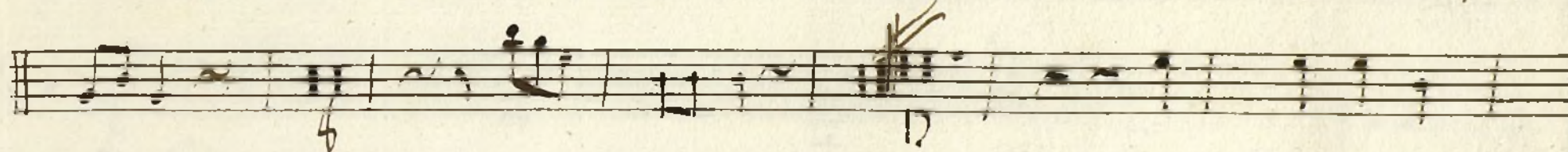


t

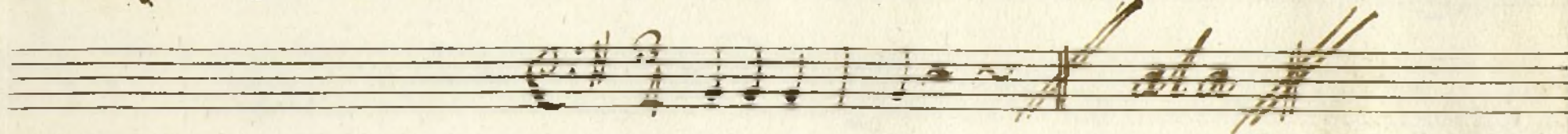
Núm 9-2

*Trompa 2ª Corna de Calceste.*

*All.<sup>o</sup>* *C: # 3/4* 







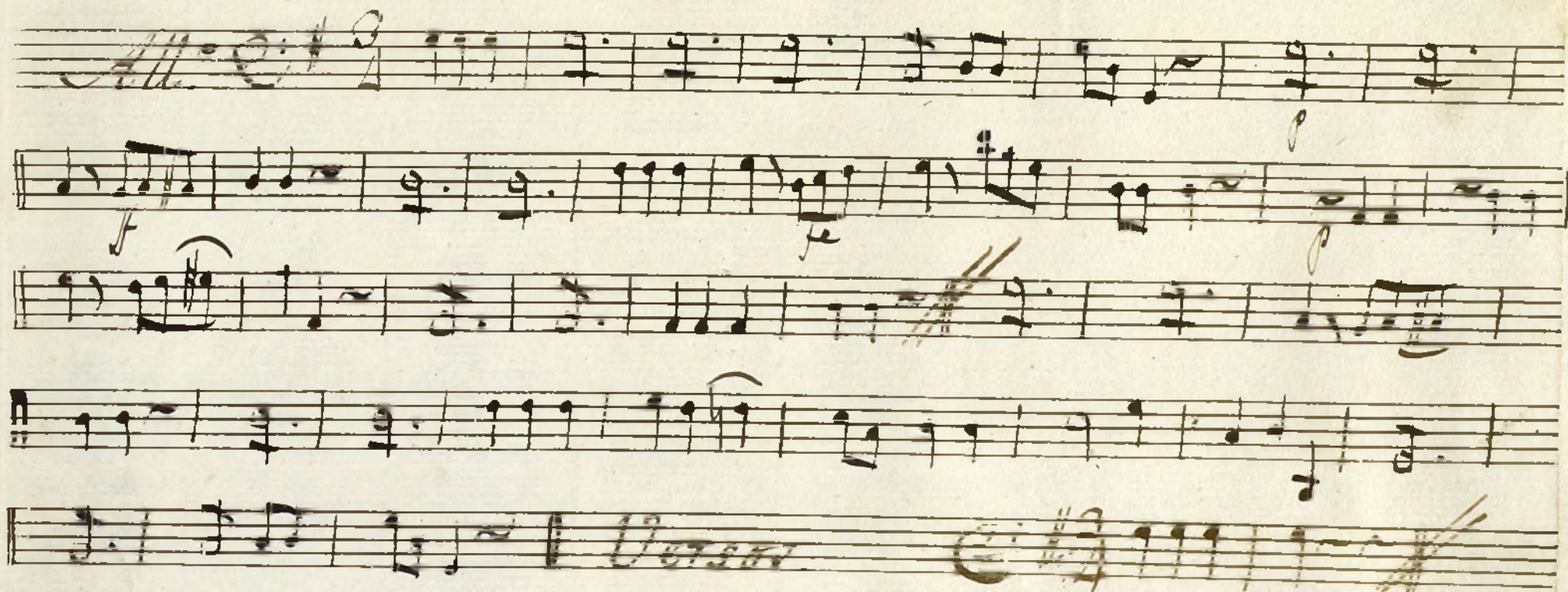


Ayuntamiento de Madrid



*Bafo Com.ª A Galante.*

Nº 9-2



*allegro*



