

Leg. 2^a n.º 6.

(Leg. 3^a n.º 50)

Mus. 180-6

+

Tonadilla

ã Solo

La Academia 50

||

S^a Rosa Larcia

Laserre


mi humildad. Con un contento in de cible empo-
 xremedax- una famosa a ca demia que yo-
 Laxa io acantar- em = pezaxa io a cantax-
 vi esta Navidad- que = yo vi esta Navidad-
 pero ya me dice la benigni dad, q. ol-
 a tiendan a tiendan- Con benignidad, y-



bide el xacelo que dese el pesax- que dese el pe-
perdon ya plauso todos medaxan- todos me da-



sax: y que mi tonadilla- puedo princi-
lan- por que yo la academia pueda princi-



piar; y que mi tonadilla puedo principiax; puedo princi-
piar; por que io la academia pueda principiar; pueda princi-

Handwritten musical score for "Desfilé" by Juan José de la Torre. The score is written on ten staves with lyrics in Spanish. It includes tempo markings like "Allegro" and "Allegro", and dynamic markings like "p" and "f". The lyrics describe a procession in Madrid.

1ª vez: no vive

Allegro

Des-

Allegro

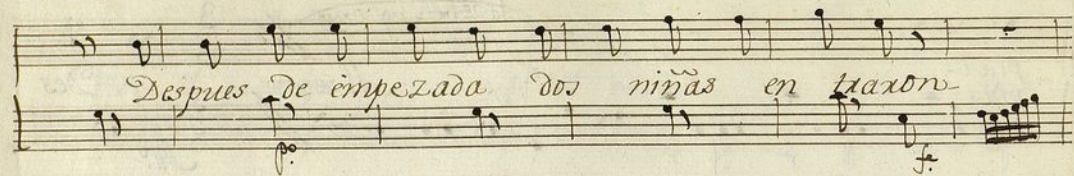
pues de junta da una grande óx questa: Fue

con Cavalleros Fuéron Petimetas= De

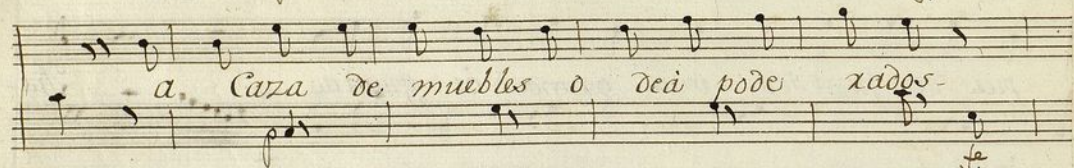
los combidados y de los posternas Se

lleno la Casa de fentes di versas-

Avuntamiento de Madrid



Después de empezada dos niñas en traxon-



a Carra de muebles o dea pode xados-



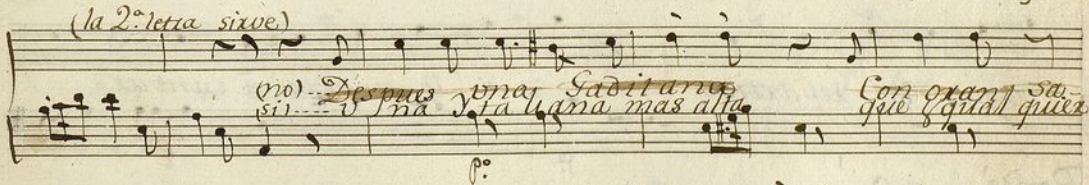
un Cadete en tre ellas en tío tan soplado-

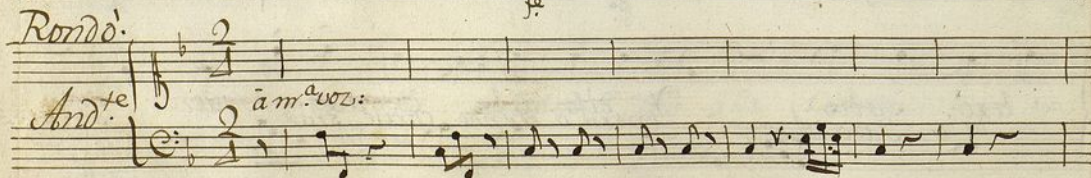
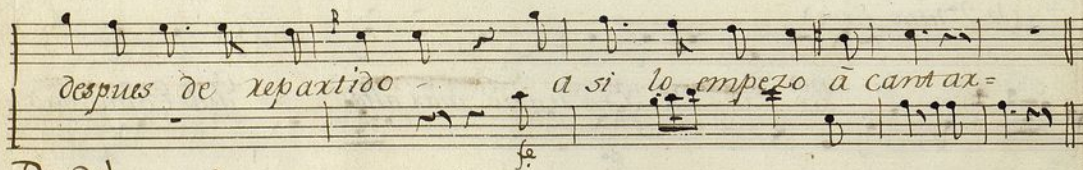
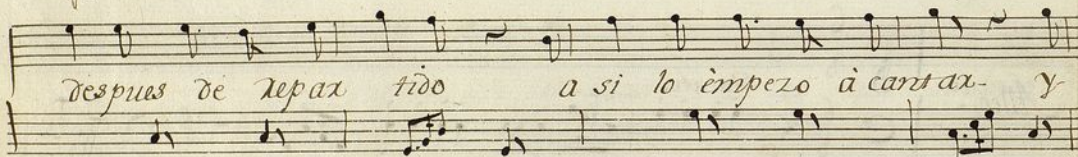
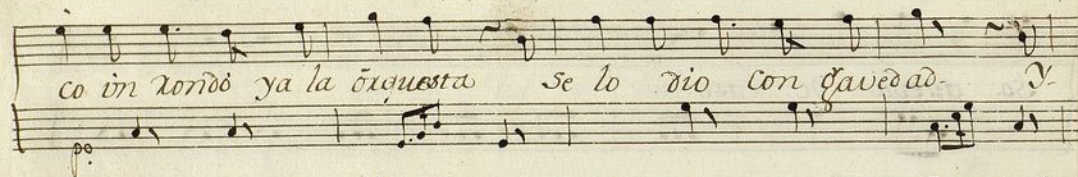
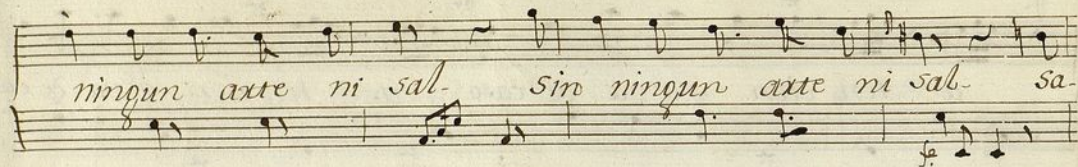


que hizo tanto aizo que en fizo el estrado-



Yoñ los sujetos que allí Cantaron-





Deh nel sen bel ydol mio frena oh Dio quel
xio dolor. Deh ne sen bel ydol mio frena oh Dio quel
no do lox. frena oh Dio quel no dolor. Se pa-
venti ai rischi miei- tempra al meno il tuo timor-
Se pa, venti ai rischi miei tempra al meno il tuo ti-

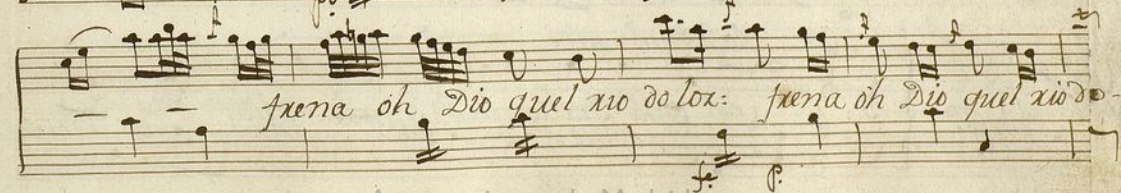
mo: Deh nel sen bel ydol mio frena oh Dio quel-

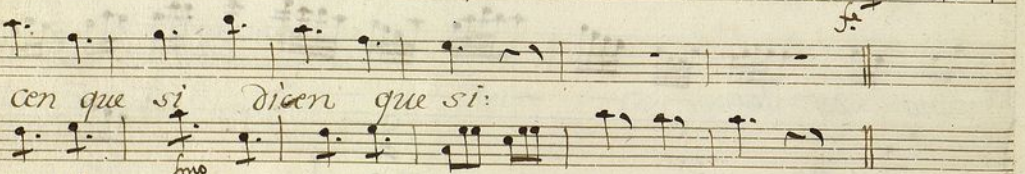
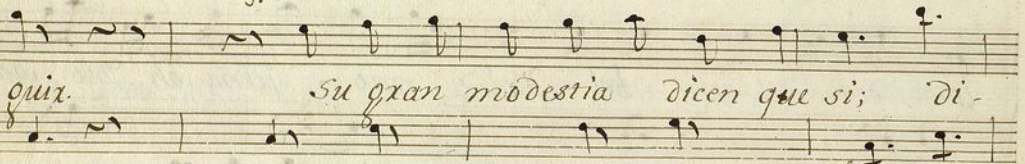
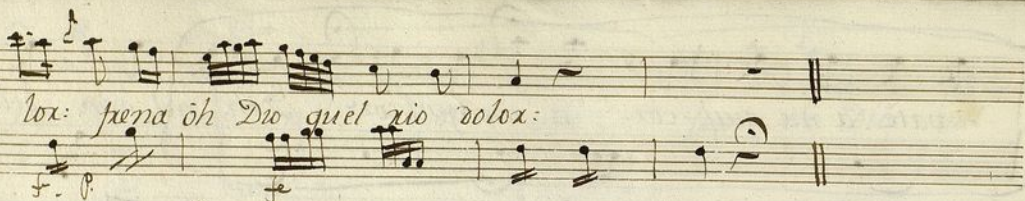
no
xio do lox: del nel sen bel ydol mio frena oh-

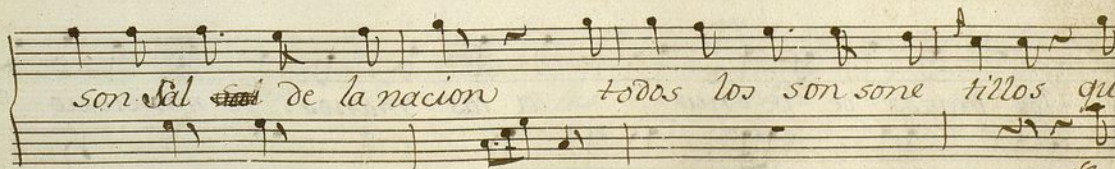
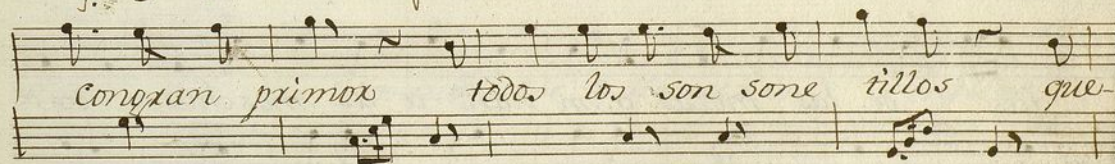
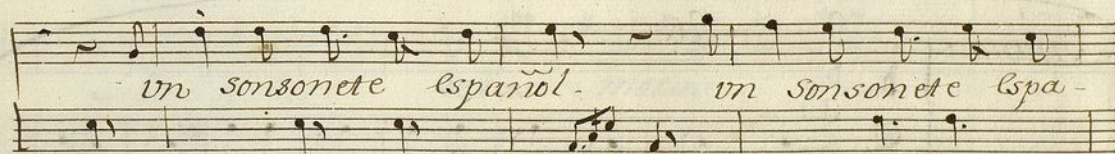
Dio quel xio do lox: frena oh Dio quel no do lox:

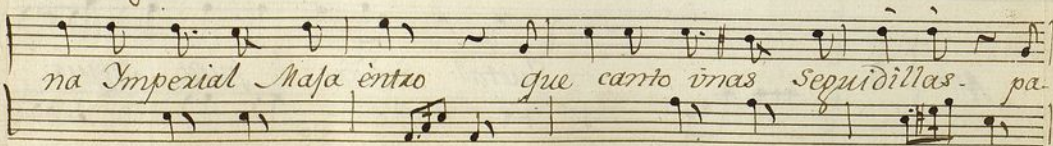
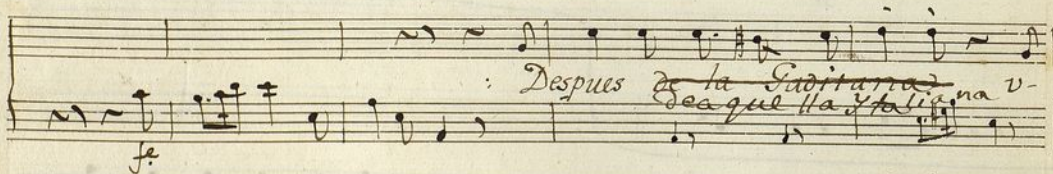
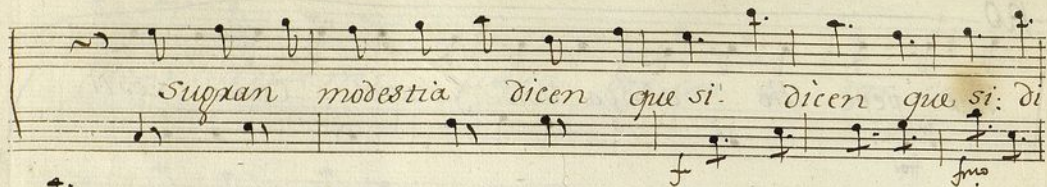
voiche in Ciel regate oh Dei= con servate a me quel

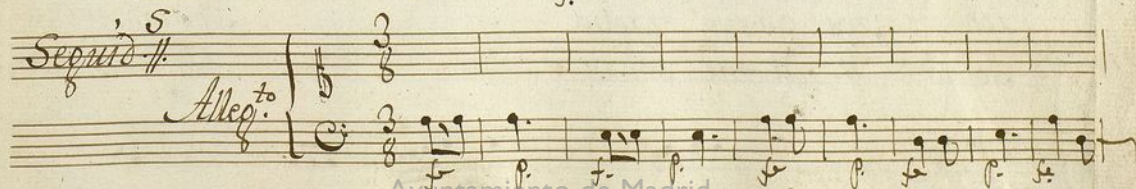
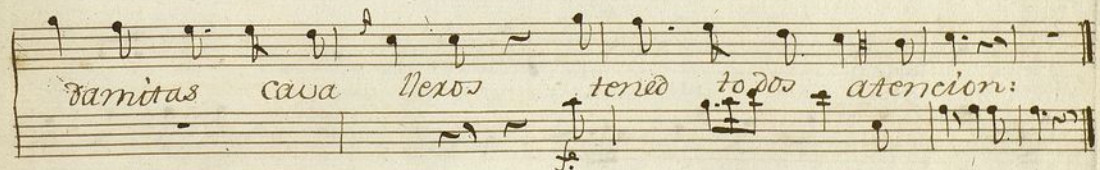
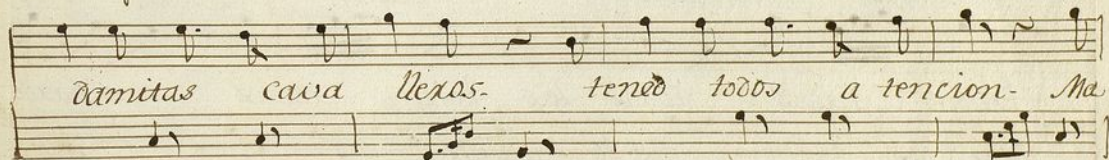
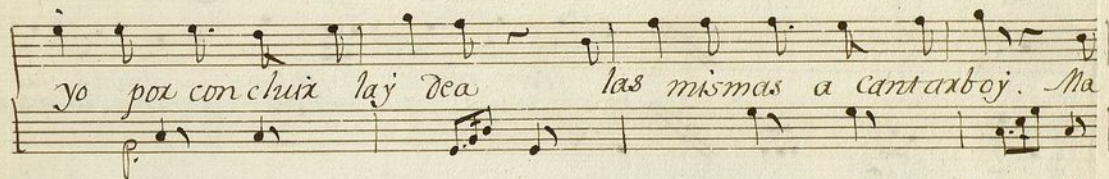
no
cor: a me quel cor: voiche in Ciel regate oh Dei con ser-











El Día que yo sal-go Con viento en popa

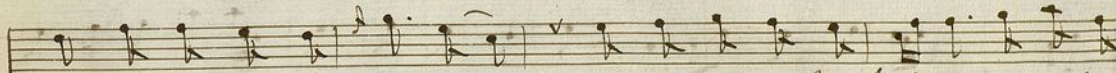
Con viento en popa
Sopla que sopla - todas las
que lo que aó-

bolun tades = todas las bolun tades mi garbo
tas las falta- que lo que aótras las falta a mi me

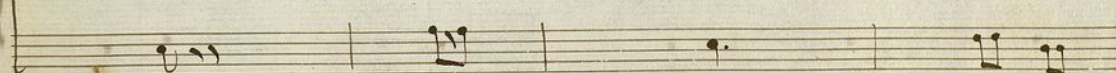
roba: mi garbo rova --- Por quere cu-
sobra: a mi me sobra --- Por quere sa



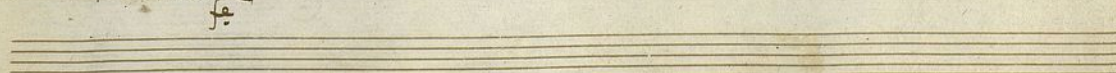
ne...o. Por queste ede ficio... esta sal sa bro-
le...ro. Por queste garvito... y este aixe de la



sa. este loci quinto... a xastra los babosos de cinco en
co. y este frontis picio... de tras de si se llevan grandes y-

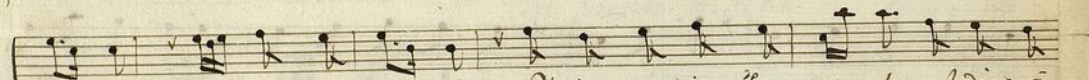


cinco... me siguen maestranas me siguen toxeros
chicos... me siguen cadetes... me siguen petrados







si medan ad mito... si me piden niego Val queme aprieta
si medan xrespondo si me piden calle Y si por fian-

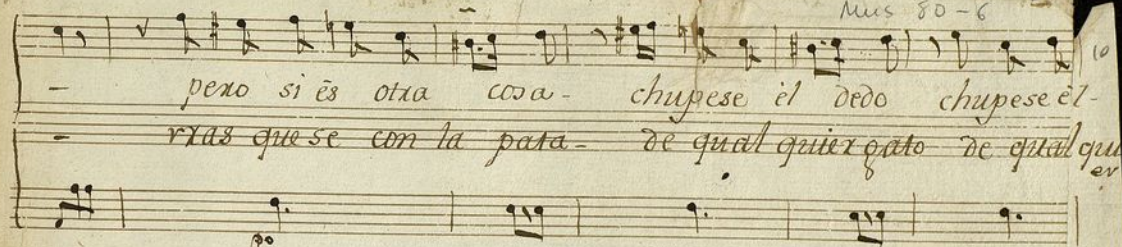


mucho le digo a questo Val queme aprieta mucho le digo a
mucho les digo al caso Y si por fian mucho les digo al-

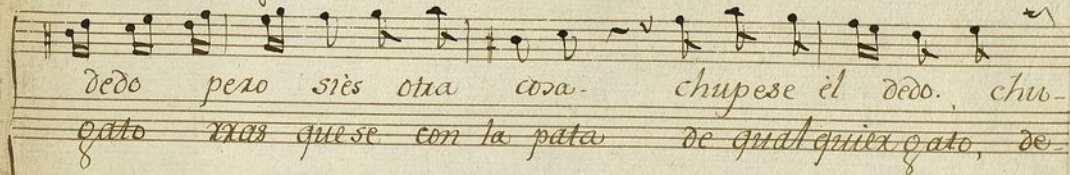


Questo... Si vmd. quere chus ca-da a qui la llevo-
Caso... Si a vmd. le acen cor quillas michiste y garbo-





pero si es otra cosa - chupese el dedo chupese el-
- rras quese con la pata - de qual quier gato de qual quier



dedo pero si es otra cosa - chupese el dedo. chup-
gato rras quese con la pata de qual quier gato, de



pese el dedo - - -
qual quier gato - - -

Al Segno.



Mus 80-6

Mompui

t

Violin 1.^o

Son^a a solo

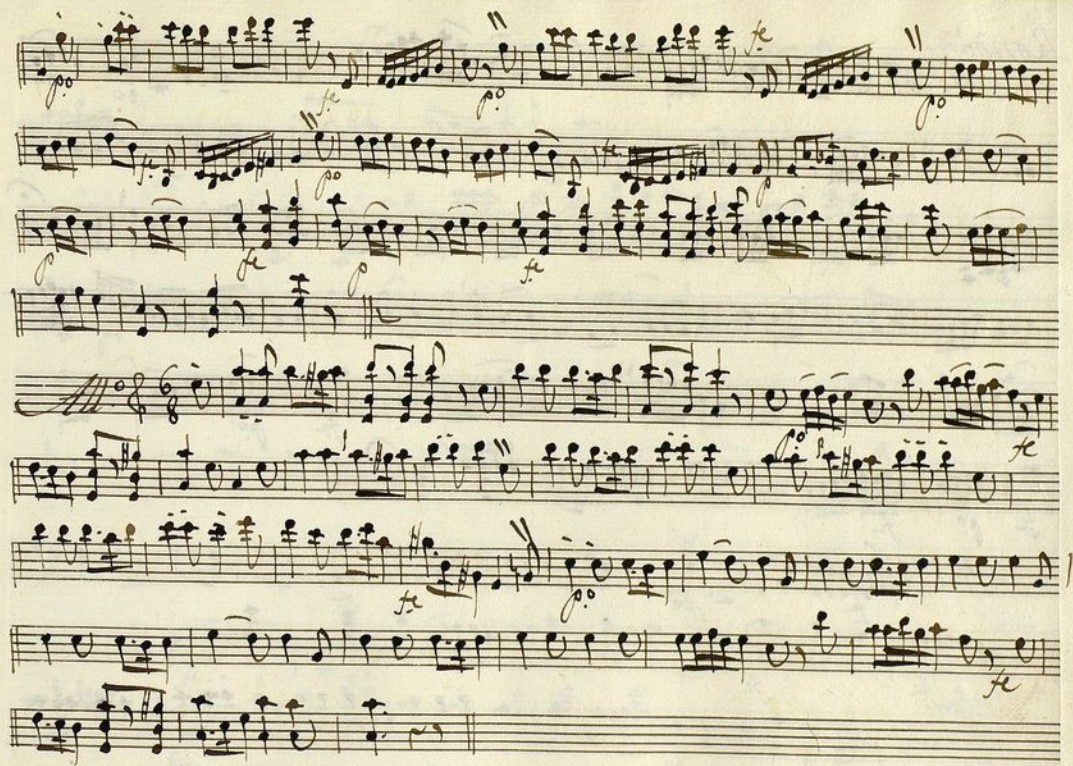
Rosa Garcia

And.^{te} 6/8

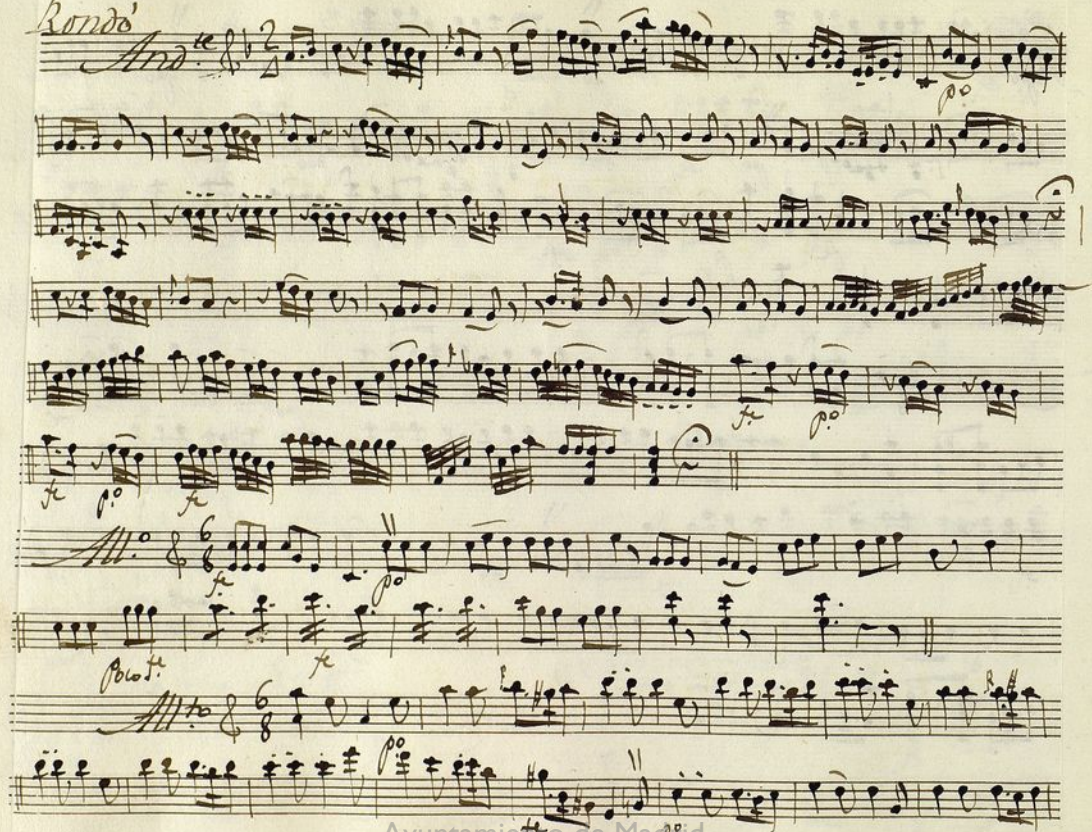
la 2ª vez resitose

Allegro

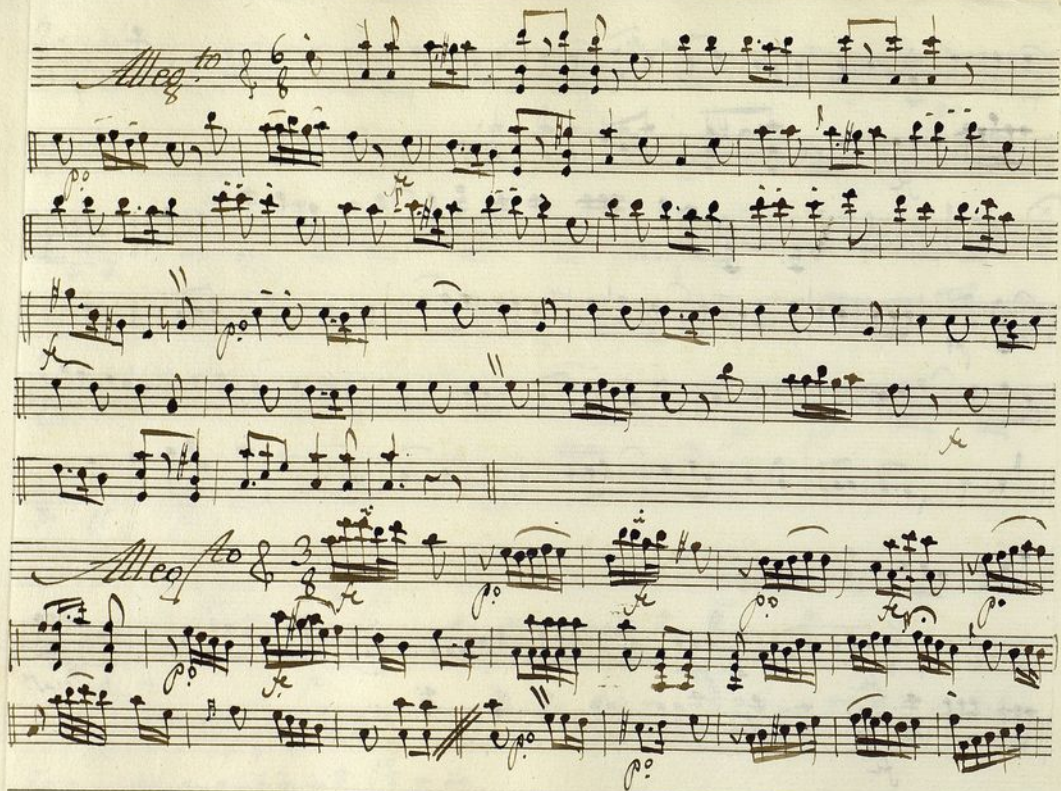
Ayuntamiento de Madrid



Rondo
And.



Handwritten musical score on aged paper, featuring ten staves of music. The notation includes various musical symbols such as notes, rests, and clefs. The third staff is labeled "Arana" and the eighth staff is labeled "Allegro". The piece concludes with a "Coda" marking on the tenth staff.



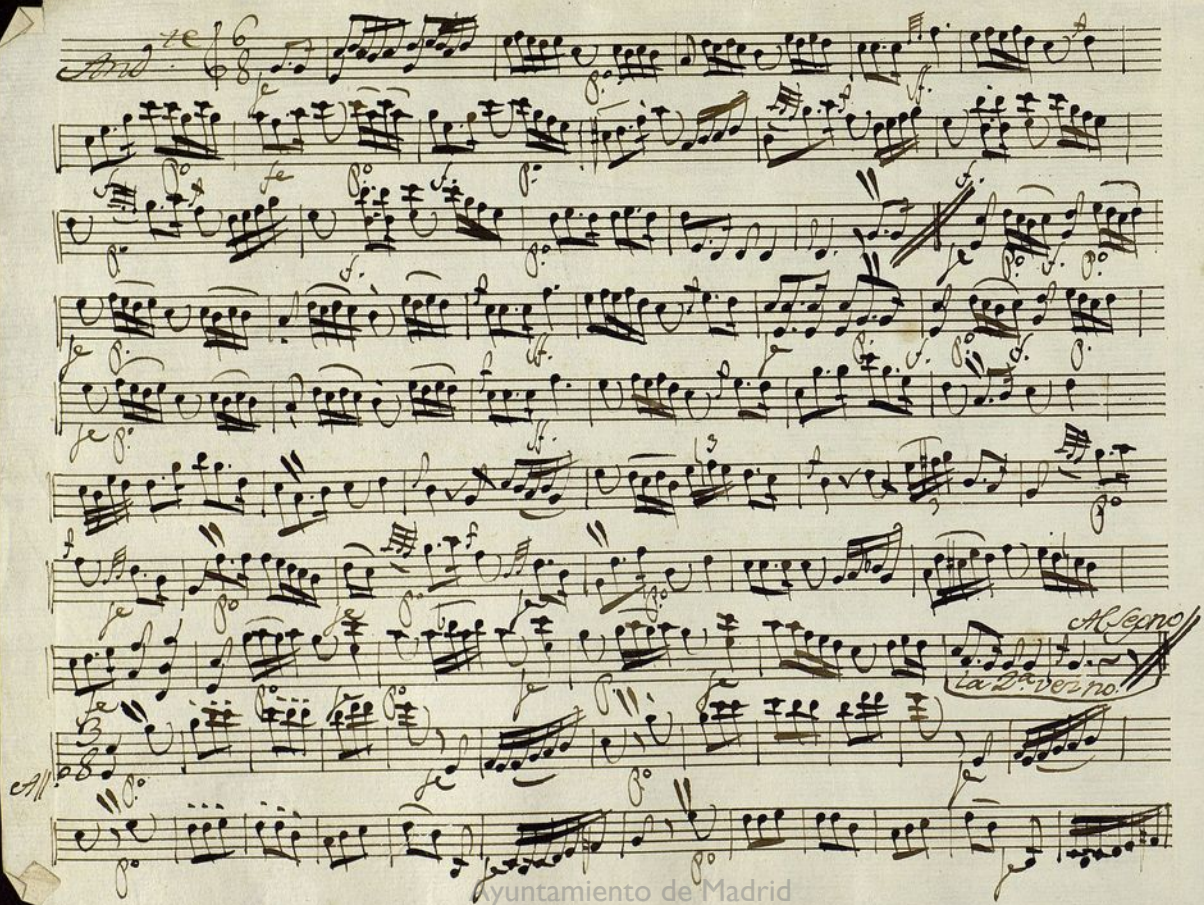


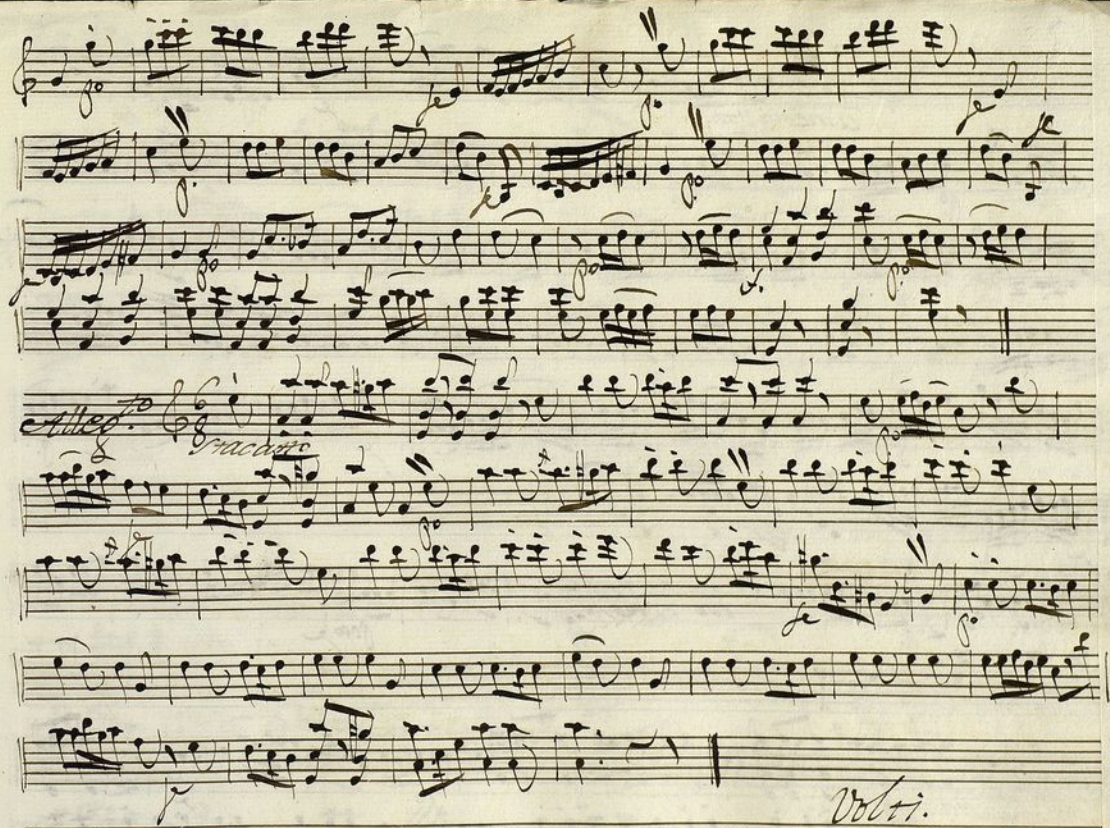
Ayuntamiento de Madrid

Violin 1^o

Conadilla à solo.

Gela Academia;

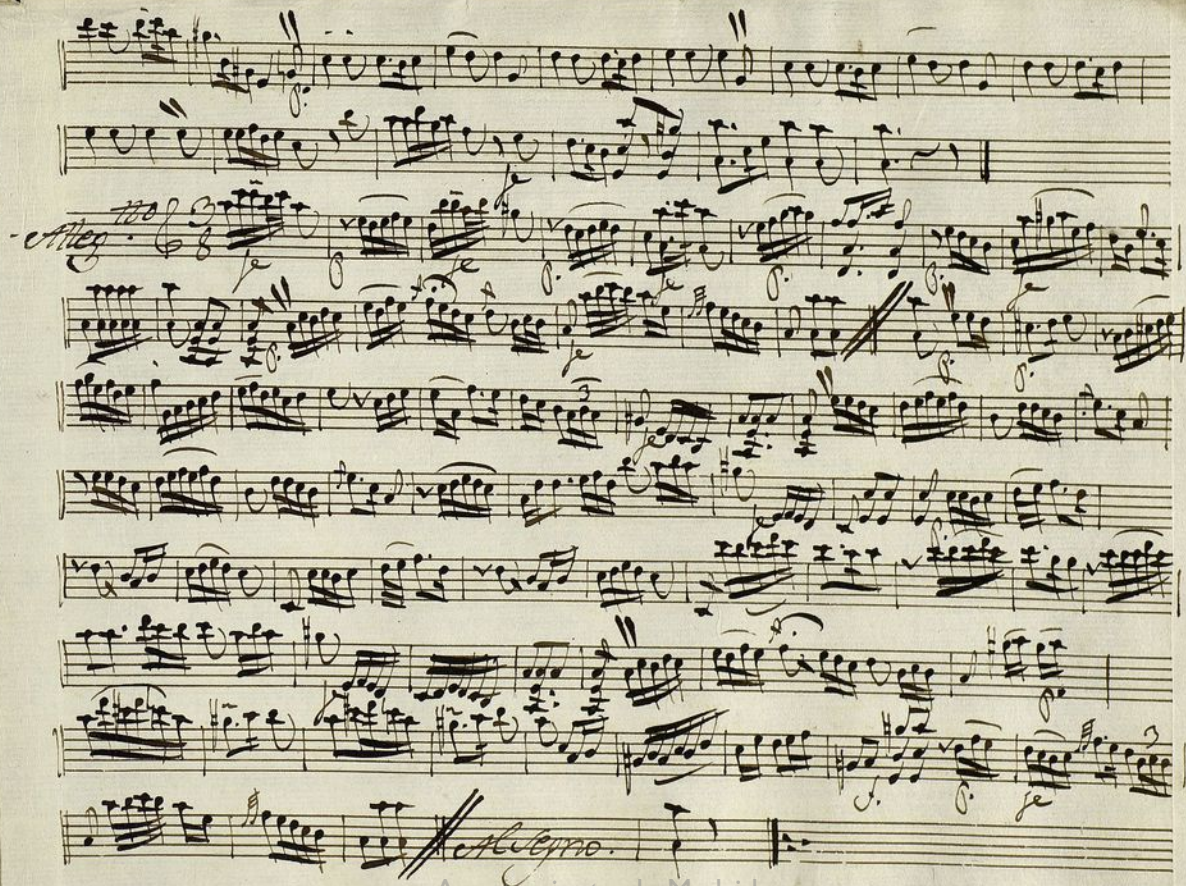




Rondeau
And. *2.* *Amélia Vos.*

Amélia Vos.

Macarr.



Ayuntamiento de Madrid

5^{ta} Nova.

t

Violin 1.^o

Tonad.^o a Solo

||

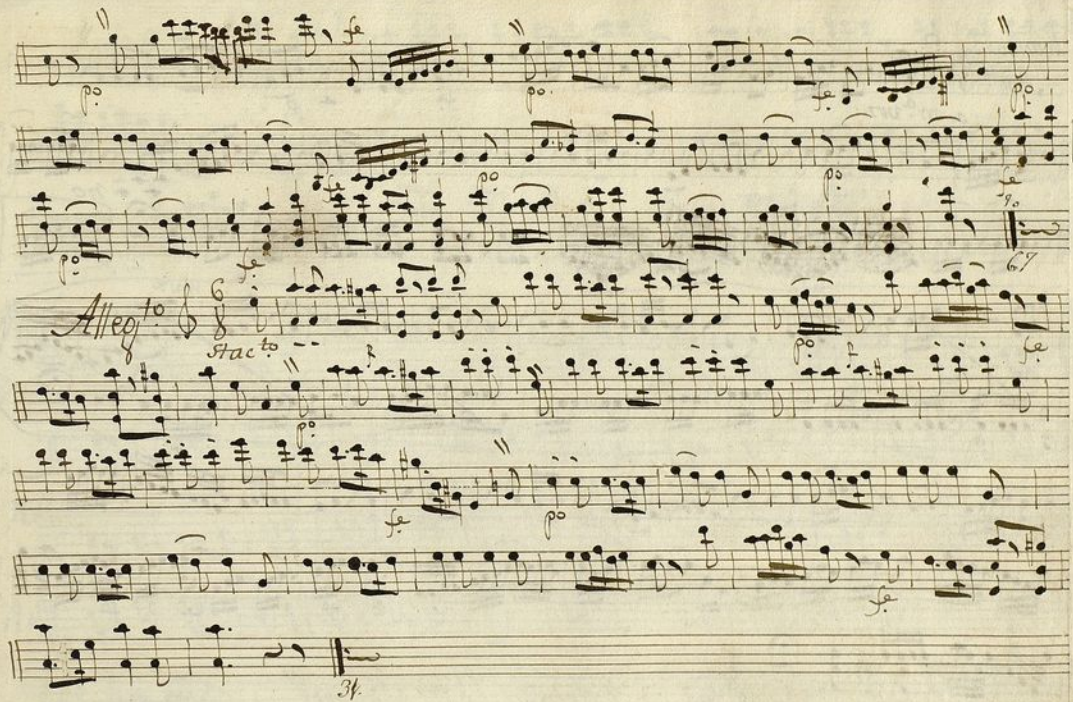
de la Academia

A handwritten musical score on ten staves. The notation includes various musical symbols such as clefs, time signatures, notes, rests, and dynamic markings. The score is written in a historical style, likely from the 18th or 19th century. The music is organized into measures by vertical bar lines. There are several slurs and phrasing marks throughout the piece. A double bar line with a repeat sign is visible on the fourth staff. A section marked "Allegro" begins on the eighth staff, followed by a section marked "Allegro" on the ninth staff. The score concludes with a final cadence on the tenth staff.

la 2^a vez no siue

Allegro

Allegro



Rondo:

2

And.^{te}

a m^a voz.

f

p

no

2/

mf

si

10

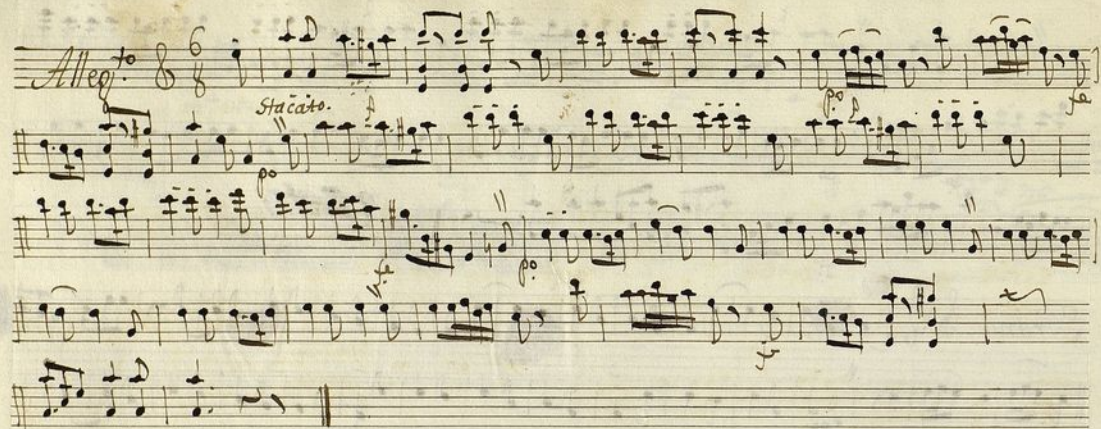
Poste

f

13

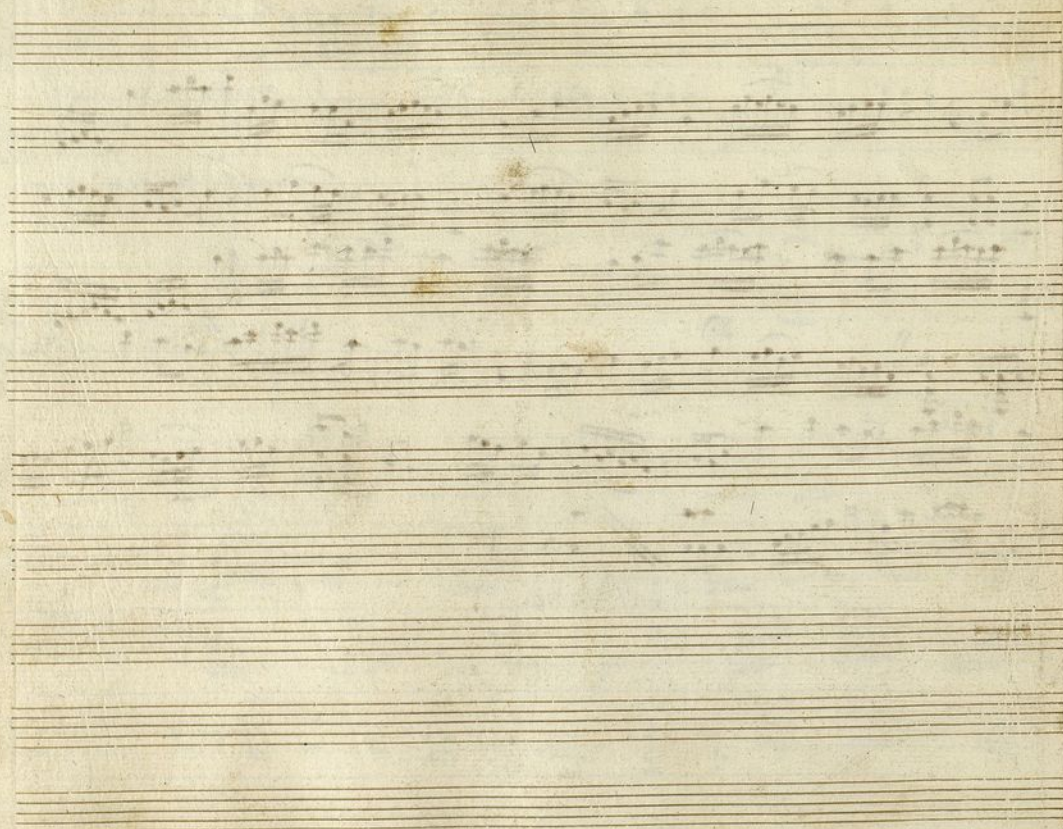
Handwritten musical score on two staves. The first staff begins with a treble clef, a key signature of one sharp (F#), and a 6/8 time signature. The notation includes various rhythmic values and accidentals. The second staff continues the melody and includes a section marked with a double bar line and the word "fin" crossed out.

Handwritten musical score on five staves. The first staff is marked "Alto" and "Prima" and begins with a treble clef, a key signature of one sharp (F#), and a 3/8 time signature. The notation includes various rhythmic values and accidentals. The second staff continues the melody. The third staff begins with a treble clef and a key signature of one sharp (F#). The fourth staff continues the melody. The fifth staff begins with a treble clef and a key signature of one sharp (F#), and includes the word "poco" written below the staff.





Al Segno.

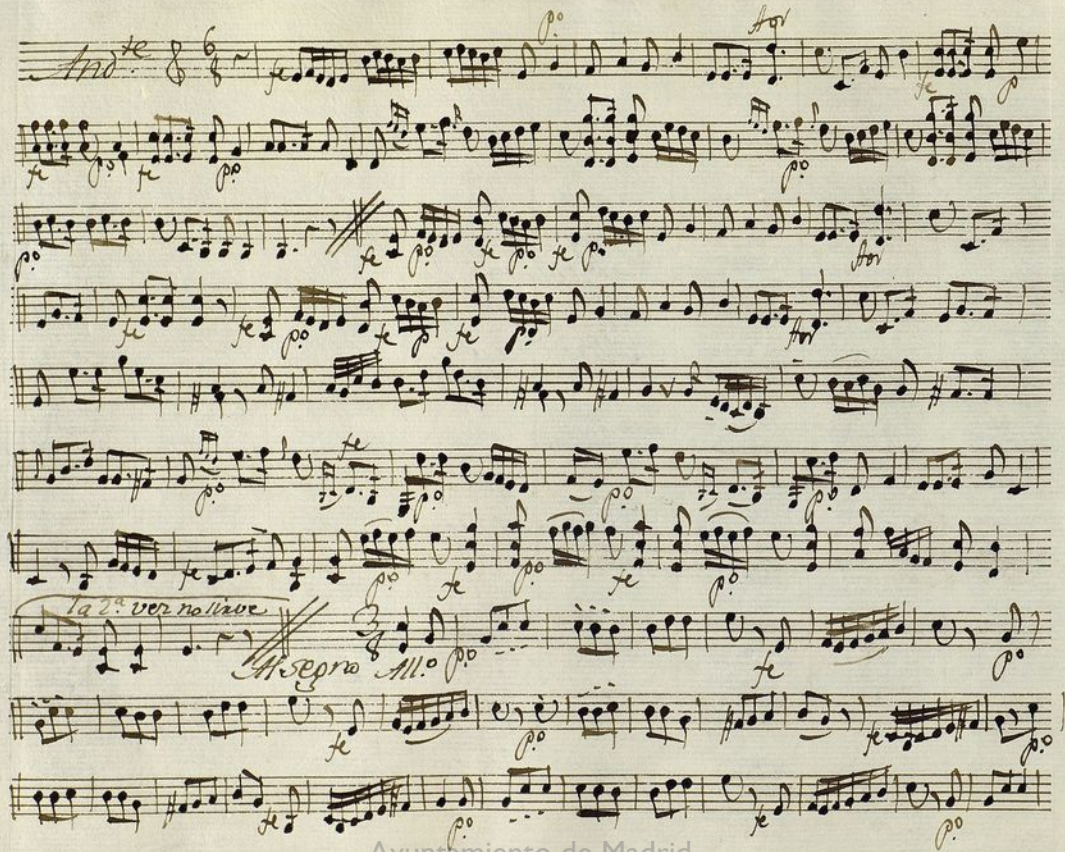


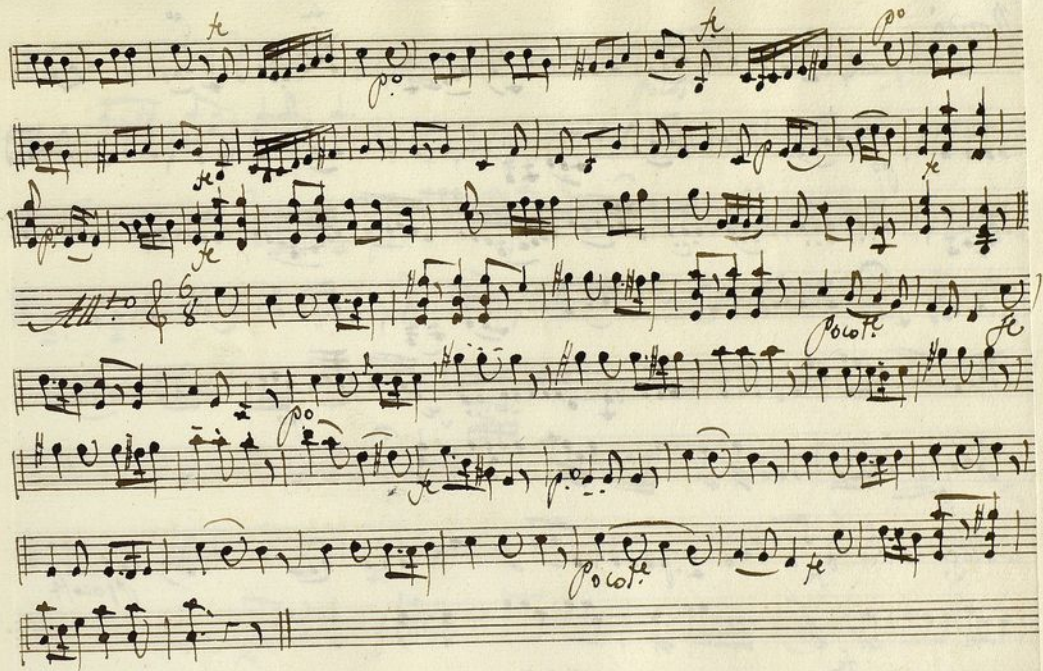
t

Violin 2º

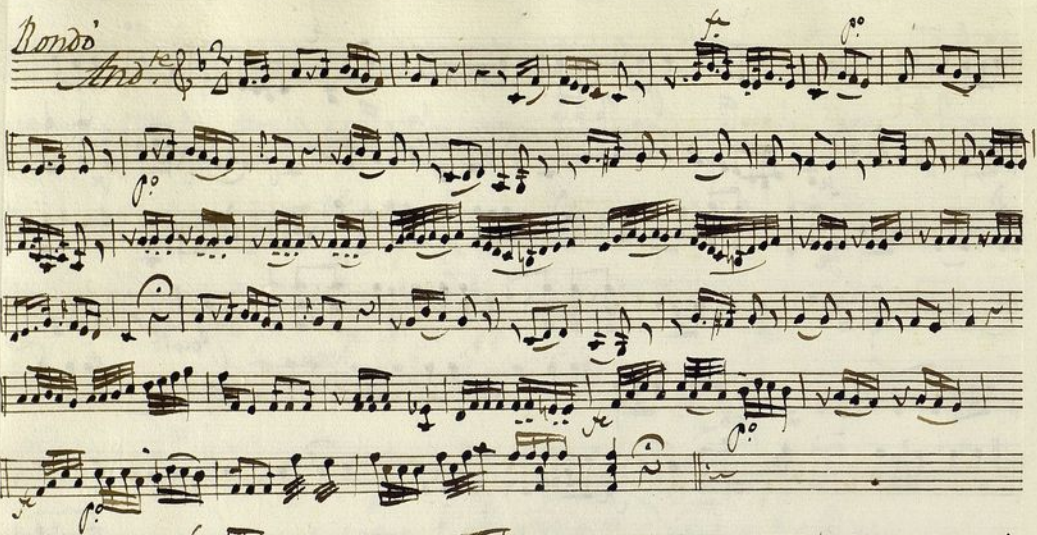
Fon.^a a solo

Rosa Garcia



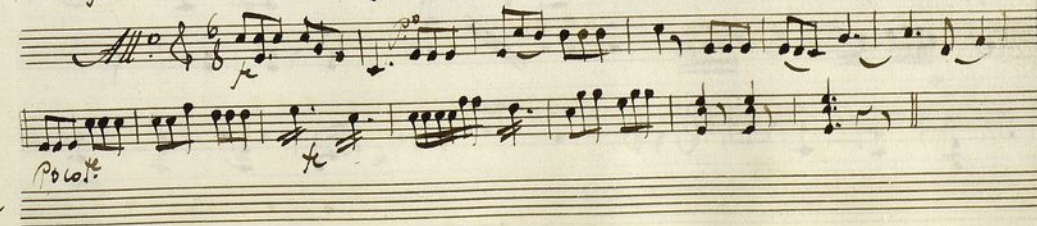
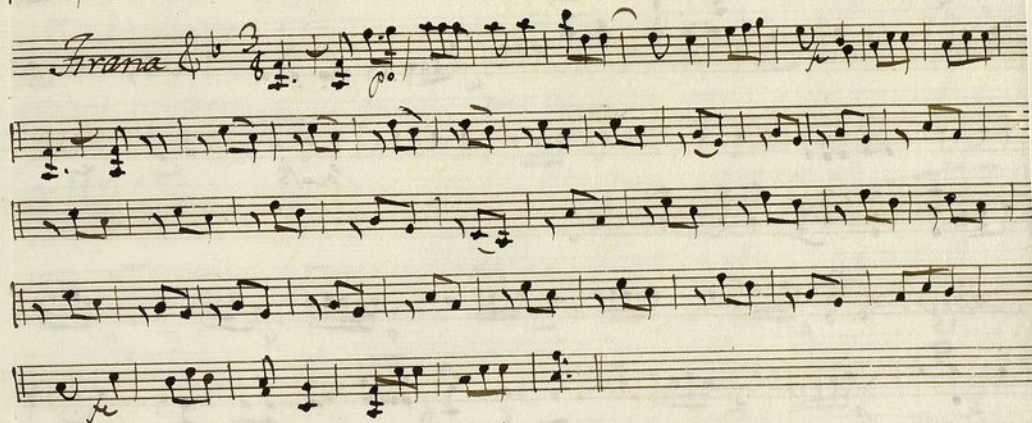
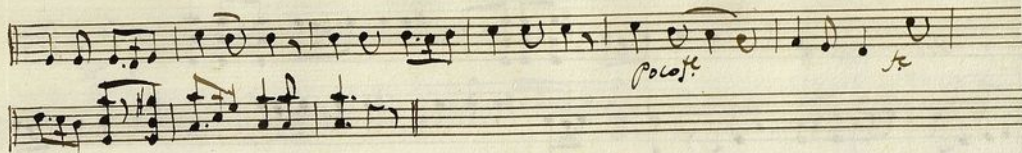


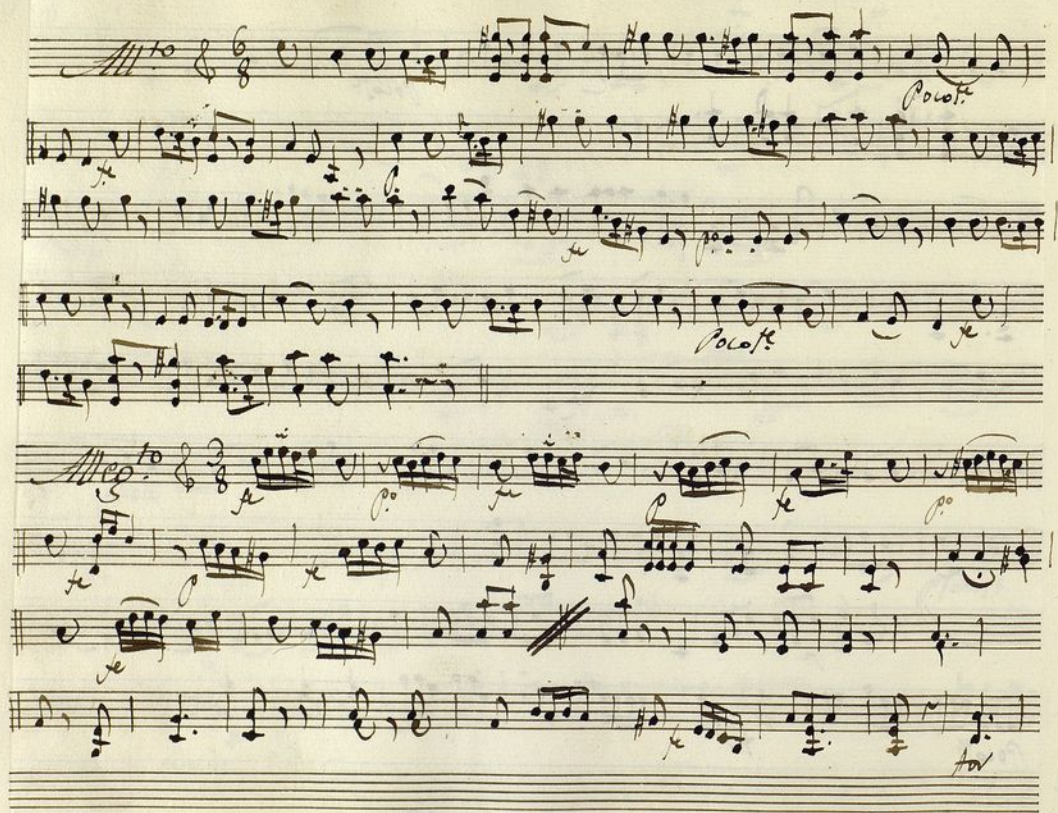
Rondo



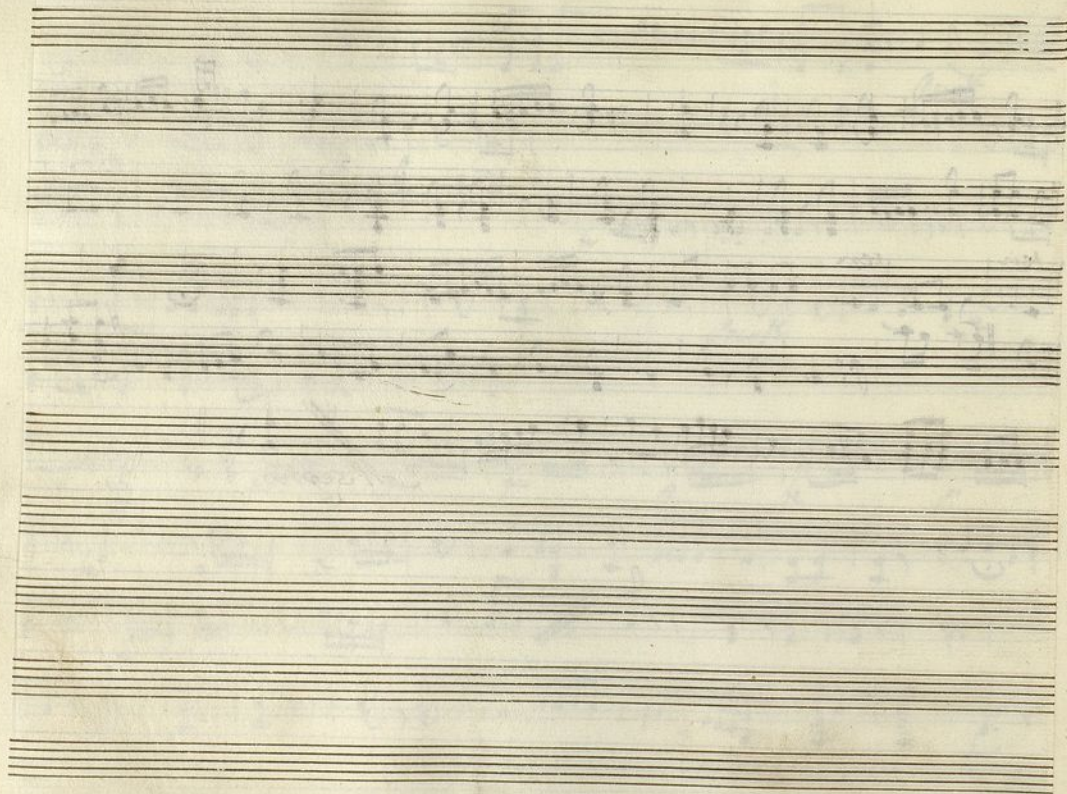
no











Ayuntamiento de Madrid

Mus. 80-6

1^a hora.

Violin 2^o

Ton.^a a solo

ff

And^{te}

p

p

p

p

p

p

p

p

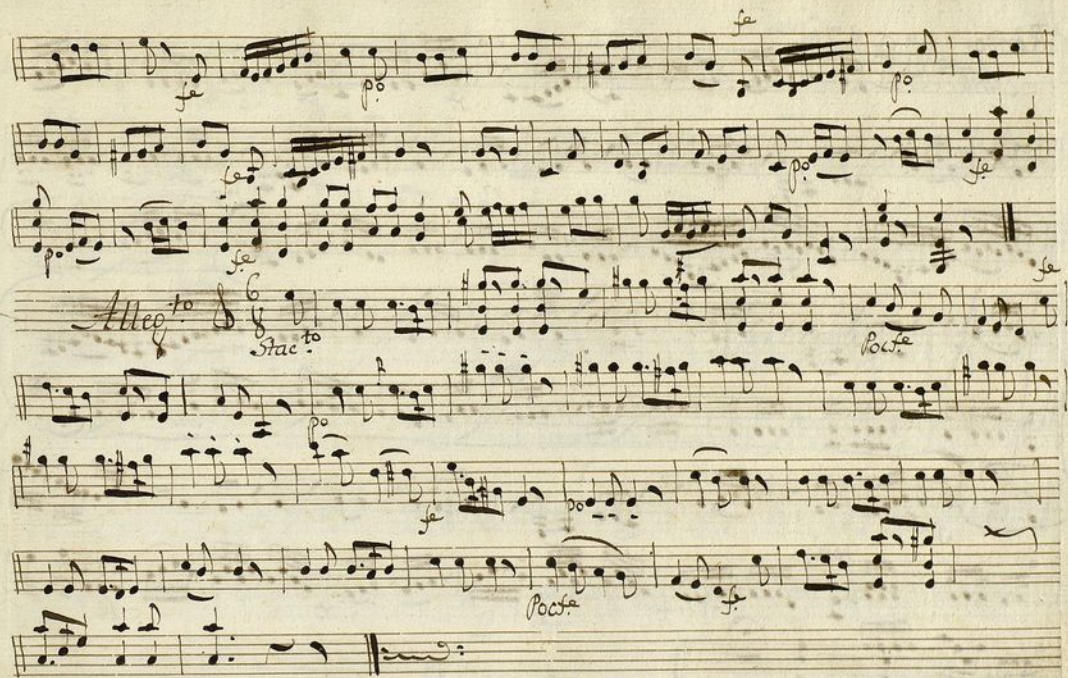
p

p

p

la 2. vez no si se

Al Sep no:



Rondo. *a m.^a vez.*

Handwritten musical score for a Rondo, marked *a m.^a vez.* The score is written on ten staves, organized into three systems. The first system consists of the first three staves, the second system of the next four staves, and the third system of the final three staves. The music is in treble and bass clefs, with a key signature of one flat (B-flat). The tempo is marked *Rondo.* and the repeat sign is present at the beginning of the first staff. The score includes various musical notations such as notes, rests, and dynamic markings like *se*, *he*, *rinfe*, *si*, *ten*, *le*, and *Poc.^{to}*. A large bracket groups the first three staves, and another bracket groups the next four staves. The score concludes with a double bar line on the tenth staff.

no *All.^{to}* 6/8

no

P. de

All.^{to}

no *Allegro* 3/8

no

no

no *le* *poco*

no

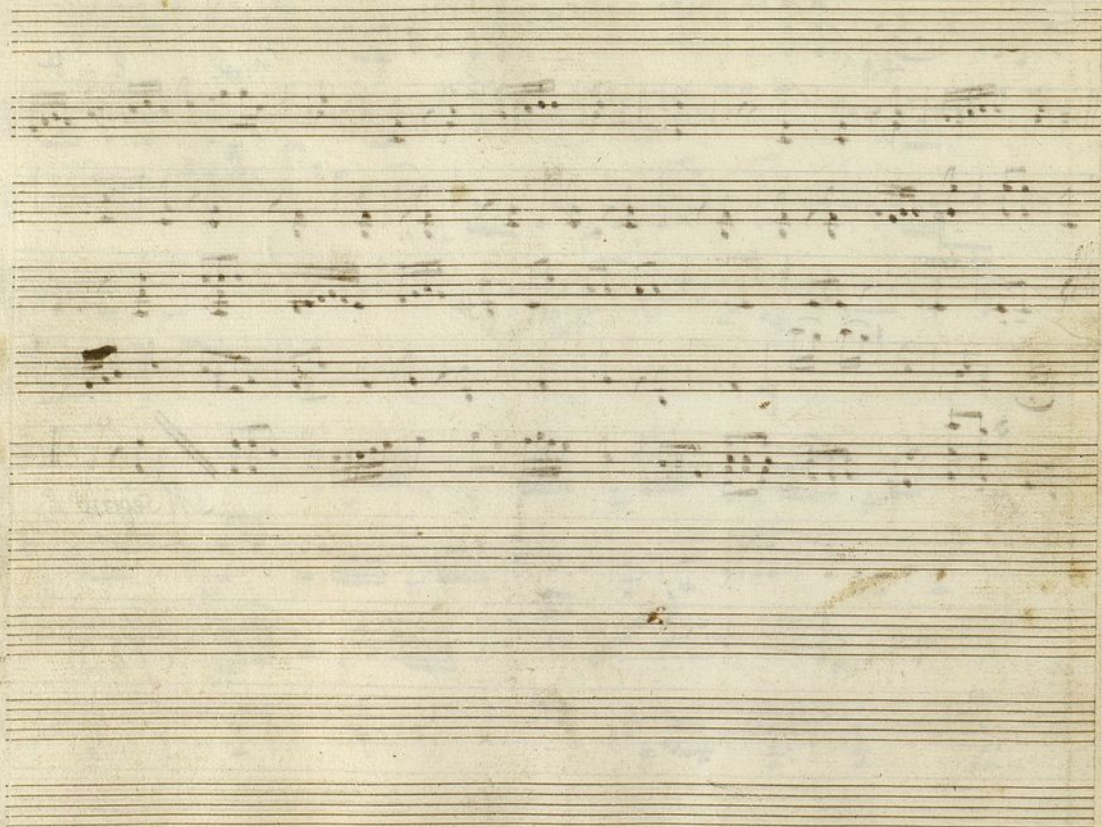
Alleg^{ro} 6/8 *Stacc^{to}* *Poco^{to}* *se*

This system contains a treble and bass staff. The treble staff begins with a treble clef, a key signature of one sharp (F#), and a 6/8 time signature. The tempo is marked 'Alleg^{ro}' and the articulation is 'Stacc^{to}'. The music consists of eighth and sixteenth notes, with some beamed groups. The bass staff continues the melody with similar note values. Dynamic markings include 'p^o' (piano) and 'Poco^{to}'. The system concludes with a double bar line.

Alleg^{ro} 3/8 *se* *p^o* *ten* *for*

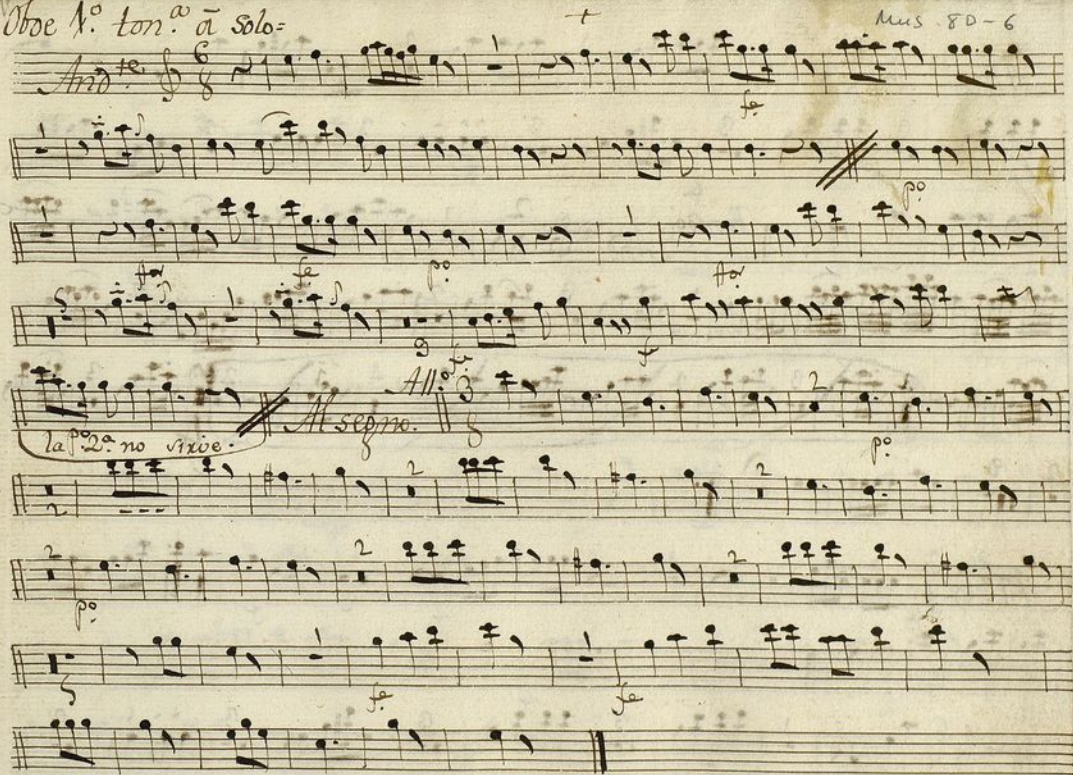
This system continues the musical piece with a treble and bass staff. The tempo remains 'Alleg^{ro}' and the time signature changes to 3/8. The treble staff features more complex rhythmic patterns, including triplets and sixteenth notes. The bass staff provides a steady accompaniment. Dynamic markings include 'p^o' (piano) and 'ten' (tension). The system ends with a double bar line.





Oboe 1.^o ton.^o a Solo=

Mus. 80-6



Allegro 6/8 f

Rondo. And. 2/4

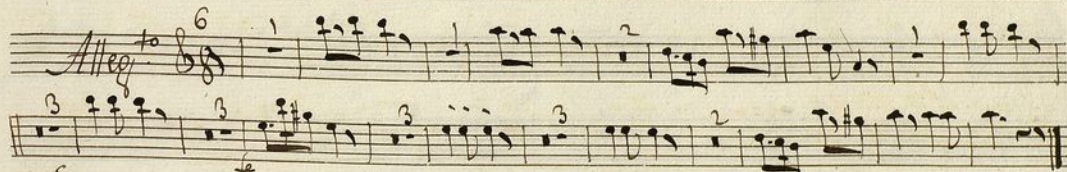
All. 6/8 f

No *All.* 6/8 f

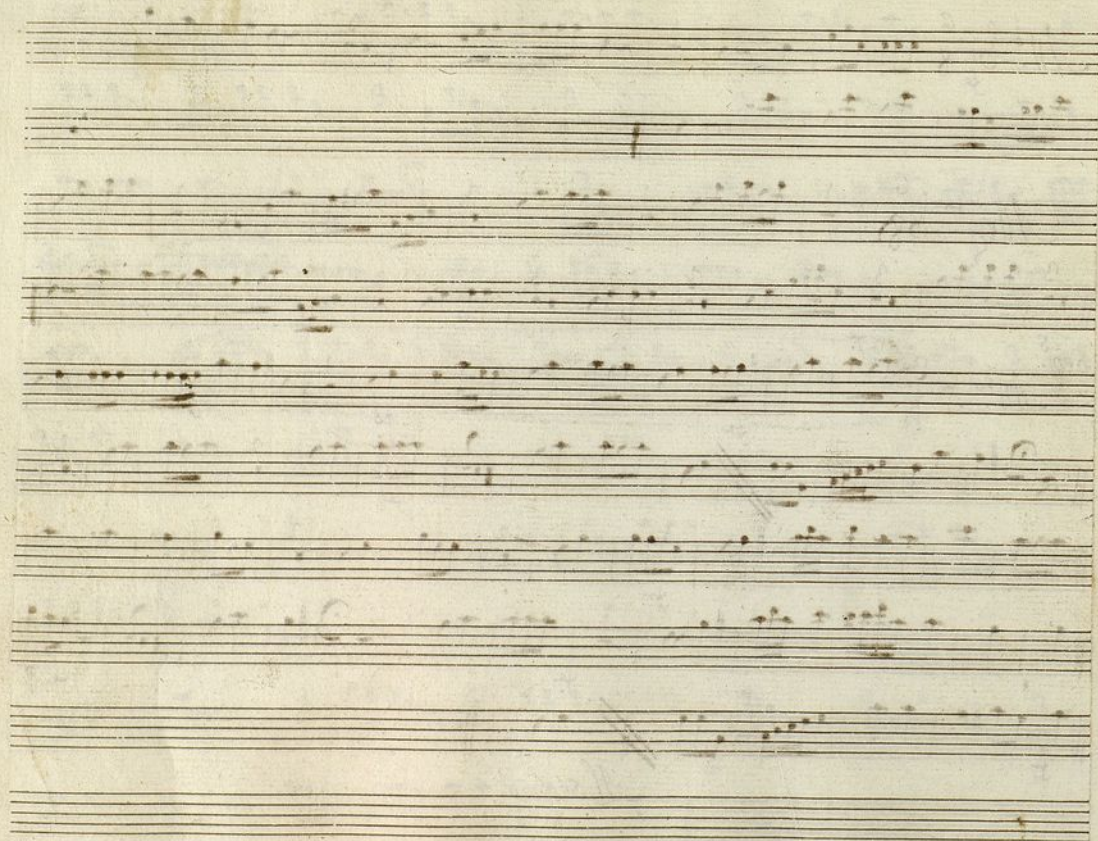
No f

Face la Tirana.

no



Al Segno.



Oboe 2^o ton.^o a solo

Mus 80-6

Handwritten musical score for Oboe 2^o in G major, marked "And.^{te}". The score consists of ten staves. The first staff begins with a treble clef, a key signature of one sharp (F#), and a 6/8 time signature. The tempo marking "And.^{te}" is written above the first staff. The music features various rhythmic patterns, including eighth and sixteenth notes, and rests. There are several dynamic markings, including "p." (piano) and "f." (forte). A section of the score is marked "la 2^a vez no sirve." (the 2nd time it doesn't serve) and "Allegro". The score concludes with a double bar line and a repeat sign.

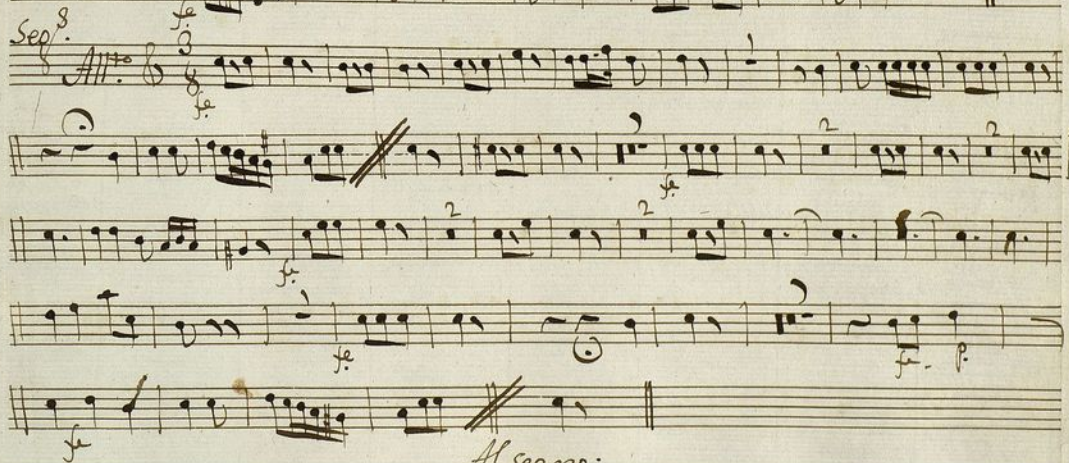
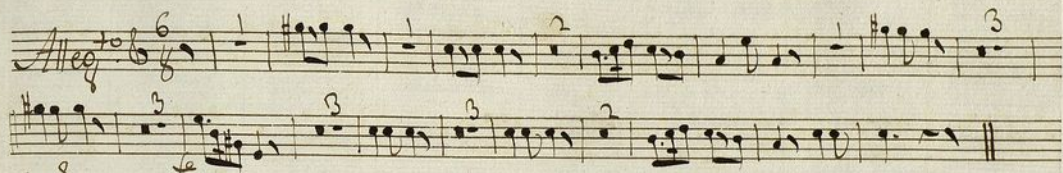
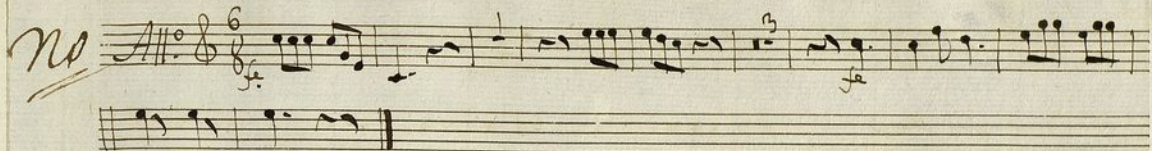
Alleg^{ro} 6/8

Roma.
And.^{te} 2/4

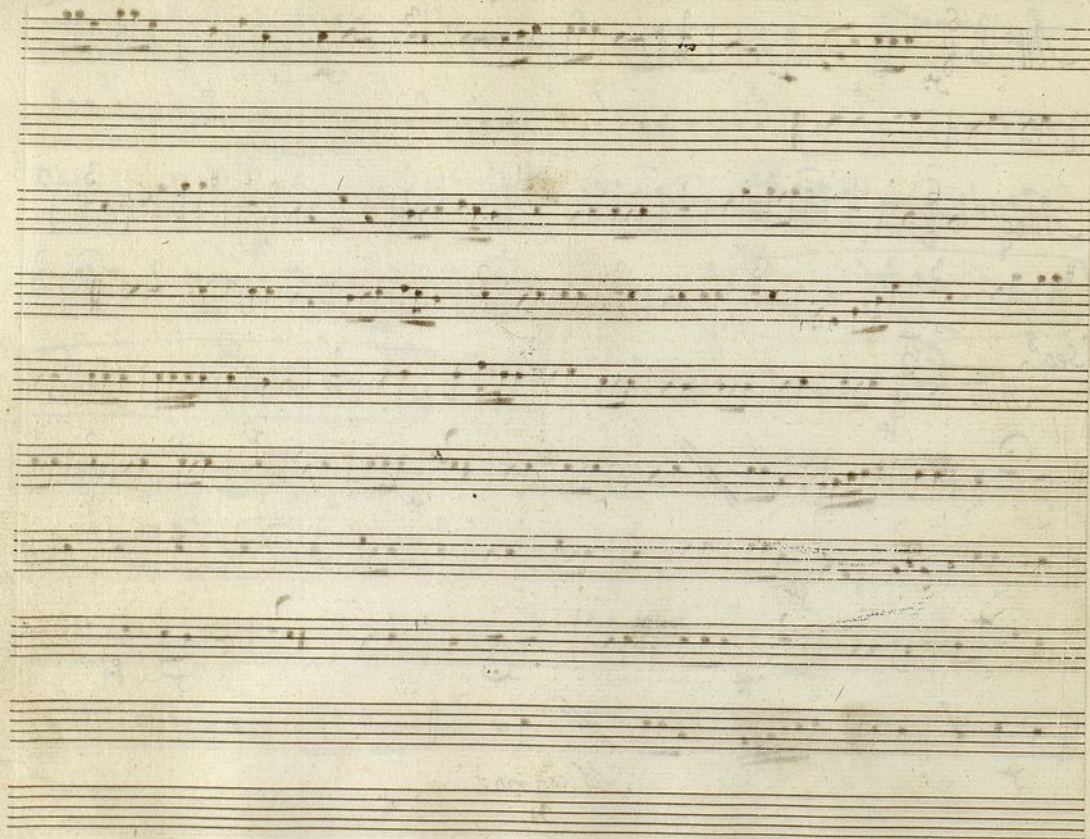
no *Alleg^{ro}* 6/8

Arma Face.

Ayuntamiento de Madrid

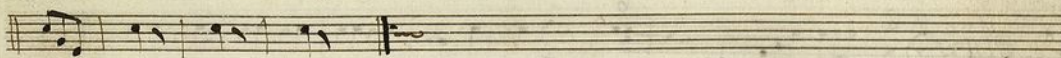
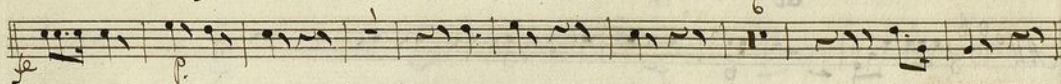


Allegro:



Trompa 1.^a ton.^a a Solo La Academia,

Mus 80-6



la 2.^a vez no
Allegro.

Rondo: *And.^{te}* *mf.*

Handwritten musical score for a Rondo in 2/4 time, marked *And.^{te}* *mf.*. The score consists of six staves. The first staff begins with a treble clef and a 2/4 time signature. The music features various rhythmic patterns, including eighth and sixteenth notes, and rests. There are several measures with triplets (indicated by a '3' over the notes) and a measure with a 'no' marking. The second staff continues the melody with more complex rhythmic figures. The third staff shows a change in dynamics to 'p' (piano) and includes a 'no' marking. The fourth staff is marked 'Allegro' and '6/8' time, with a '6' over the first measure. The fifth staff is marked 'Allegro' and '6/8' time, with a '5' over the first measure. The sixth staff is marked 'Allegro' and '6/8' time, with a '6' over the first measure. The score concludes with the text 'Tirana lace.' written in a cursive hand.



Ayuntamiento de Madrid

Tromba 2.^a ten.^a a Solo^t La Academia

Ans 80-6

Handwritten musical score for "L'Allegretto" by Beethoven, Op. 26, No. 1. The score is written on ten staves. It begins with a treble clef, a key signature of one sharp (F#), and a 6/8 time signature. The tempo is marked "Allegretto". The score includes various musical notations such as notes, rests, and dynamic markings like "f" (forte) and "p" (piano). There are also performance instructions like "Larghetto grave" and "Allegro". The piece concludes with a double bar line and a repeat sign.

Rondo. Int.
And. 128

And




5

Handwritten musical notation for the first system of 'The Bird Song'. The staff is in treble clef with a key signature of one sharp (F#) and a 6/8 time signature. The melody begins with a quarter rest, followed by a quarter note G4, an eighth note A4, and a quarter note B4. The piece concludes with a double bar line.

no Allegro 6/8

||  || *Ariana tace.*

Arana lace.

no. 111: 

A handwritten musical score on a single five-line staff. The notation includes various note values such as eighth notes, quarter notes, and half notes, along with rests. There are several fingerings indicated by numbers 1, 2, 3, and 5 above or below the notes. A double bar line appears at the end of the staff. The handwriting is in dark ink on aged paper.

Seq. 8

Allegro 3/8

Allegro

Leg.^o 3.^o al n.^o 50

5.^a nova.

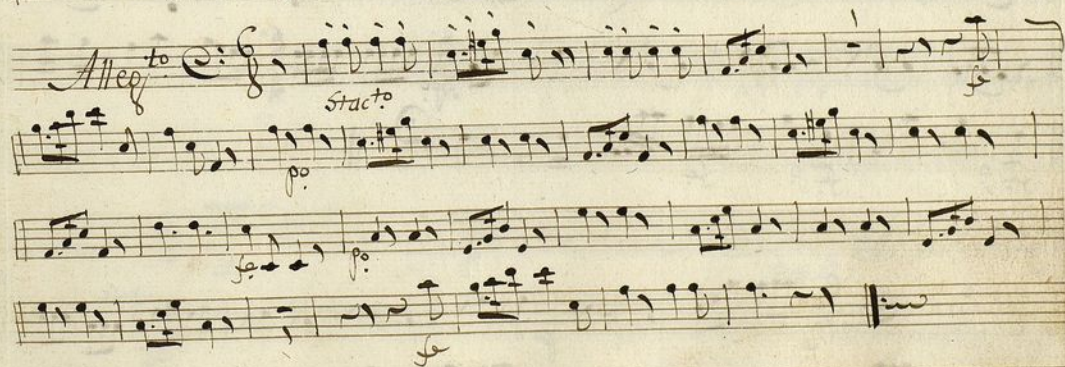
Bajo

Tonad.^a a Solo

ff.

And.^{te}

la 2.ª no si ve. *Allegro* *All.º*



Rondo: And.^{te} C[♭] 2/4

Handwritten musical score for a Rondo in C-flat major, 2/4 time, marked Andante. The score consists of eight staves. The first staff begins with a treble clef, a key signature of two flats (C-flat major), and a 2/4 time signature. The music is written in a single melodic line. The second staff has a repeat sign at the beginning. The third staff continues the melody. The fourth staff has a double bar line and a repeat sign. The fifth staff continues the melody. The sixth staff has a double bar line and a repeat sign. The seventh staff continues the melody. The eighth staff ends with a double bar line and a fermata. The score is written in a cursive, handwritten style.

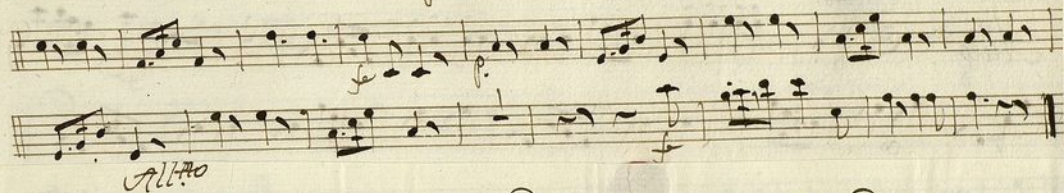
And.^{te} C[♭] 6/8

Handwritten musical score for an Andante in C-flat major, 6/8 time. The score consists of two staves. The first staff begins with a treble clef, a key signature of two flats (C-flat major), and a 6/8 time signature. The music is written in a single melodic line. The second staff continues the melody. The score is written in a cursive, handwritten style.

no

Alto

6/8

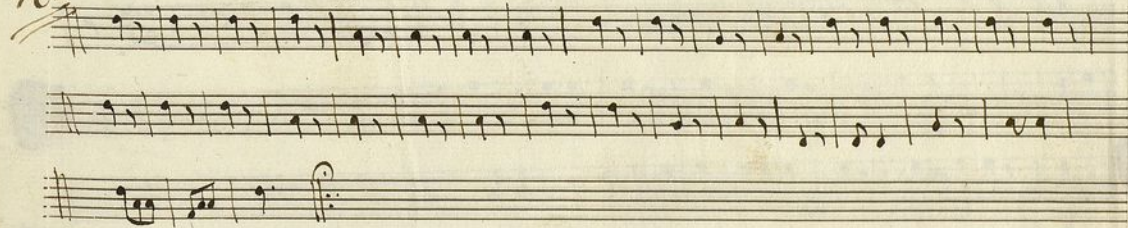


Alto

Trana

3/8

no



no

Alto

6/8



