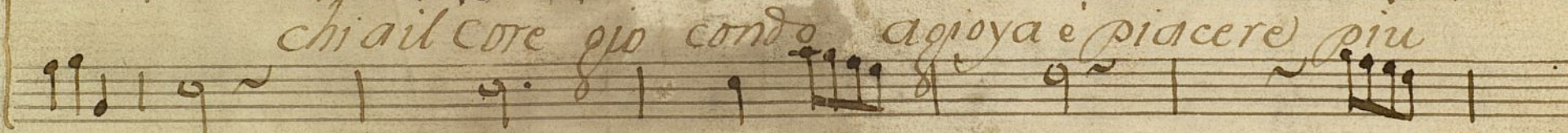
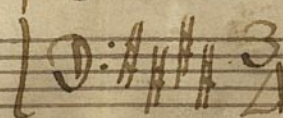
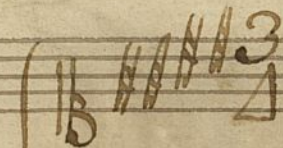


3.^o *And. Mos.*

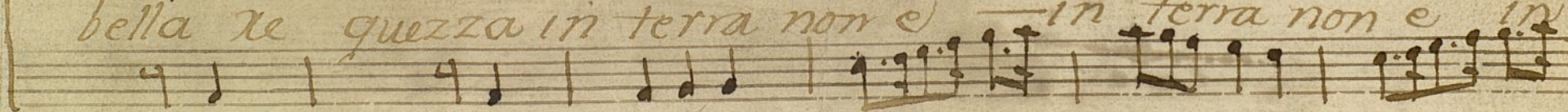
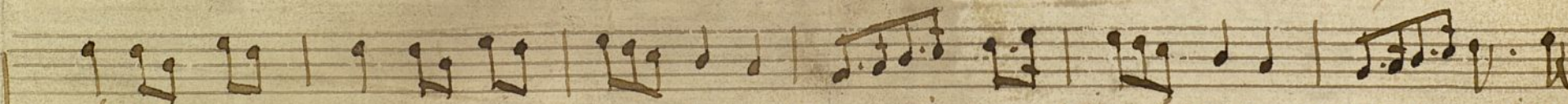
Sainete la farsa Italiana.

24 Mus 66-7

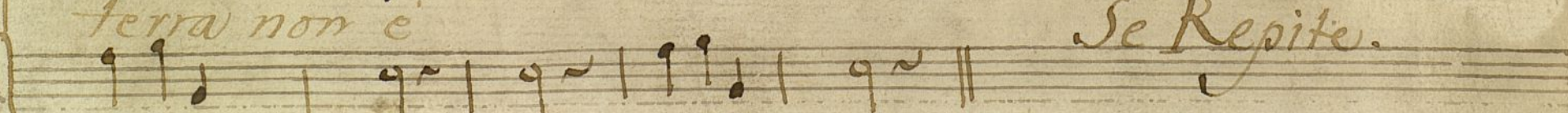
Al tempo di Minue.



chi al core gio condo agioya e piacere piu



bella xe quezza in terra non e in terra non e in



terra non e

Se Repite.

sra polonia

Alto

Esta noche que

viene esta

del Señor S.ⁿ Juan

del Señor S.ⁿ Juan me llebara mi

paco lle bara mi paco por ai a rondar

turron g.^e Maja g.^e Yie Talea con mi delan-

Ayuntamiento de Madrid

ID 1200062083

tal Malcocha puestezita ansi - pus diciendo con

Mus
667

sal a todos los q' encuentre a

el nuevo xefran — *Allegro.*

Andar andillo
que es la sal de las Sales
el Estrivillo.

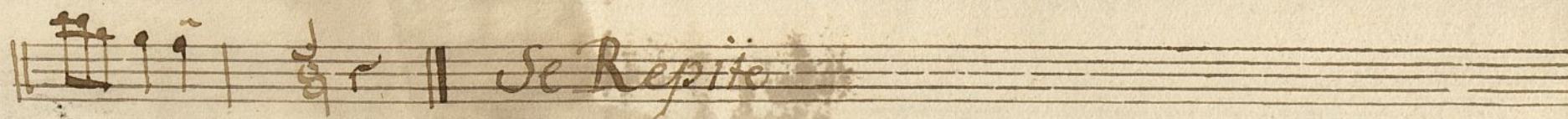
Ayuntamiento de Madrid

7D 1200062083

Violin 1^o Sainete la farsa Italiana.

Mus 66-7


Tempo di Minue. & # # # 3/4



Ayuntamiento de Madrid.

ID 1200062083

Violin 1.º Sainete la farsa Italiana.

Tiempo de Minue. 





 *Se Repite.*

All.º Seg.º 



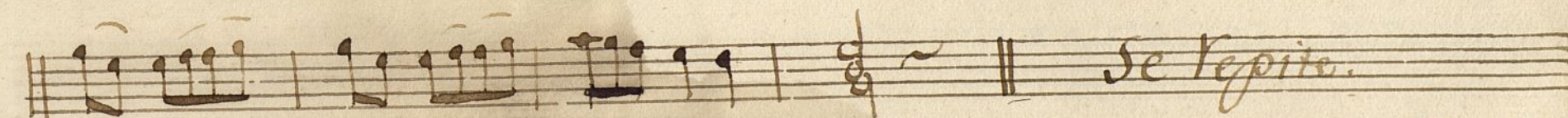
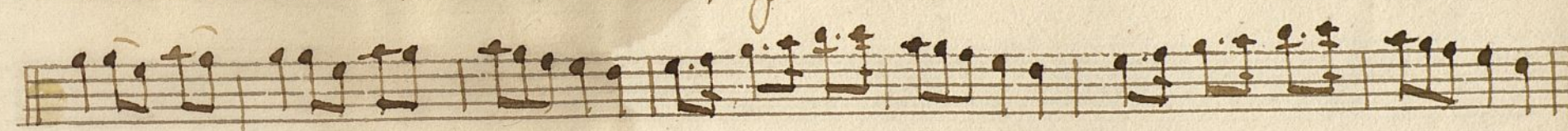
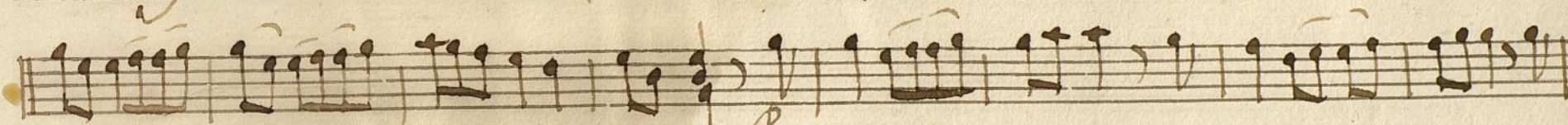




 *A seño.*

Ayuntamiento de Madrid

ZD 1200062083

Violin 2.^o Sainete la farsa Italiana.Tiempo de Minue. 8 $\sharp \sharp \sharp \sharp$ 3All.^{to} Seg.^o 8 $\sharp \sharp \sharp \sharp$ 3

Allegro.

Ayuntamiento de Madrid

ID 1200062083

+

Mus 66-7

Trompa 1.^o Sainete la farsa Italiana.

Tiempo de Minue. D: $\sharp\sharp\sharp\sharp$ 3/2

9~ | 999 | 9~ | 9~ | 99~ | 9. | 99~ | 9~ | 9~ | 999 |

9. | 999 | 9. | 999 | 9~ | 9~ | 999 | 9~ || *Se Repite.*

All.^o Seg. D: $\sharp\sharp\sharp\sharp$ 3/2 9~9 | 9~9 | 999 | 9~9 | 9~9 | 9~9 |

9~9 | 999~ | 9~ | 9~ | 9~ | 999~ | 9~9~ | 9~9~ | 9~9~ |

9~9~ | 999~ | 9~9~ | 9~9 | 9~9 | 9~9 || 999 ||

Allegro.

Ayuntamiento de Madrid

2D 1200062083

Plus 66-7

Trompa 2.^a Sainete la farsa Italiana.

Tempo de Minue. I: $\text{F} \sharp \text{C} \sharp \text{G} \sharp$ $\frac{3}{4}$ $\text{G} \sim | \text{A} \text{A} \sim | \text{G} \sim | \text{F} \text{A} \sim | \text{G} \sim |$

A single staff of handwritten musical notation. The notation includes various note values (quarter, eighth, and sixteenth notes) and rests, connected by a continuous line. The handwriting is in brown ink on aged paper.

|| ♯ ♯ ♯ | ♯. | ♯ ♯ ♯ | ♯ ~ | ♯ ~ | ♯ ♯ ♯ | ♯ ~ || se Repito.

Alto Sop. 8 D: 

A single staff of handwritten musical notation. The notation includes various note values, including minims, crotchets, and quavers, along with rests. A diagonal line is drawn across the first measure, and another line is visible below the staff. The handwriting is in brown ink on aged paper.

A single staff of handwritten musical notation. The notation includes a variety of note values: a half note, a quarter note, and several eighth notes. There are also rests of varying durations. The staff is divided into measures by vertical bar lines. The handwriting is in brown ink on aged, slightly yellowed paper. The notation is a single melodic line.

Al segno.

Ayuntamiento de Madrid

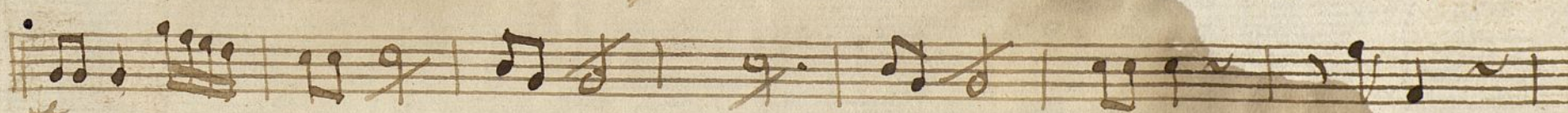
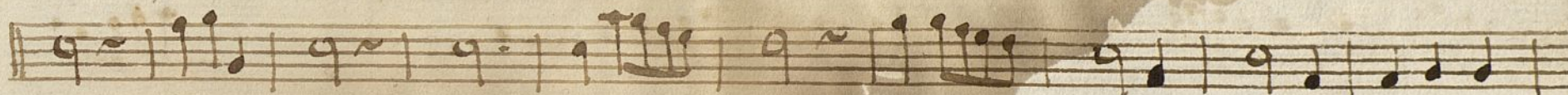
ID 1200062083

Ayuntamiento de Madrid

ID 1200062083

Bajo Sarnete la farsa Italiana.

Tiempo de Minue. D: H# F# 3/4



Al segno.

