

744-29

Coro nella Sonna Selvaggia

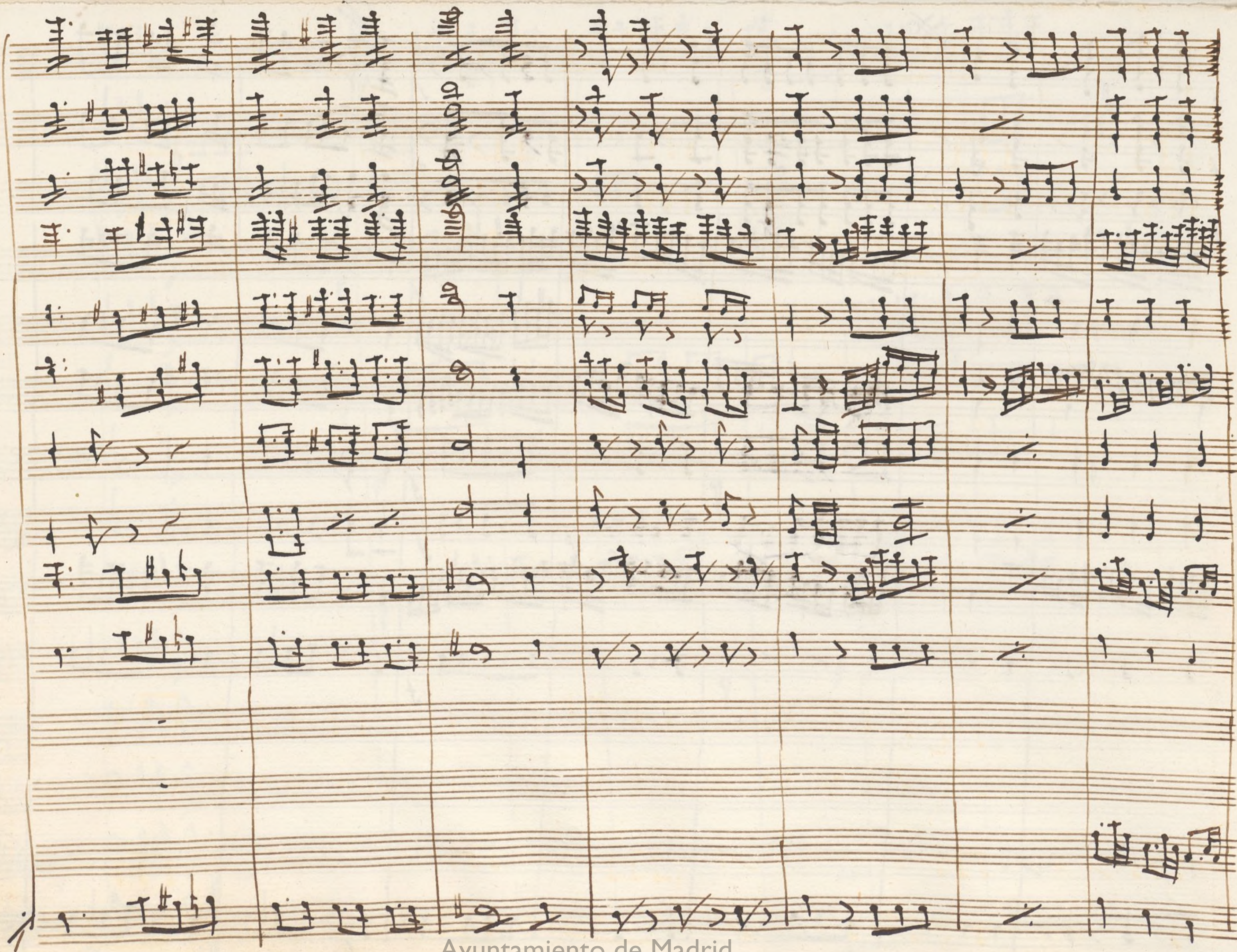
del Sig. Carnicer.

Handwritten musical score for a symphony orchestra, featuring the following instruments and parts:

- Violini:** Violins I and II, marked *p* (piano) and *cres.* (crescendo).
- Viola:** Viola, marked *p* and *cres.*
- Flauti:** Flutes, marked *p* and *molto* (molto).
- Oboe:** Oboe, marked *p*.
- Clarinetti in A:** Clarinets in A, marked *p* and *cres.*
- Corni in D:** Horns in D, marked *p*.
- Trombe in A:** Trumpets in A, marked *p*.
- Fagotti:** Bassoons, marked *p* and *cres.*
- Trombone:** Trombone, marked *p*.
- Coro:** Cor Anglais (English Horn), marked *p*.
- Violoncello:** Cello, marked *p* and *cres.*
- Allegretto:** Double Bass, marked *p* and *cres.*

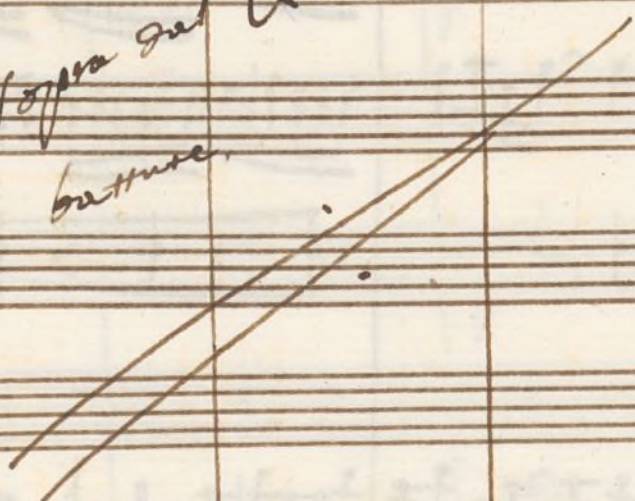
The score is written on multiple staves, with dynamic markings (*p*, *cres.*) and performance instructions (*molto*) indicating the tempo and volume. The notation includes various musical symbols such as notes, rests, and slurs.

This image shows a page of handwritten musical notation on aged, slightly discolored paper. The notation is arranged in two main systems. The upper system consists of eight staves, with the first four staves grouped together by a brace on the left. These staves contain complex musical notation, including many beamed sixteenth and thirty-second notes, suggesting a fast tempo or a technically demanding piece. The lower system consists of four staves, with the first two staves grouped together by a brace. This system contains simpler notation, primarily consisting of quarter and eighth notes. The paper shows signs of age, including some staining and a slightly uneven texture. A small 'X' mark is visible at the top left of the first staff. The overall layout is typical of a manuscript page from the 18th or 19th century.



Handwritten musical score for three staves. The notation includes various rhythmic values and dynamic markings. The first staff begins with a first ending bracket labeled '1.'. The second and third staves contain dense rhythmic patterns. Dynamic markings include 'cres' (crescendo) and 'pno' (piano).

*Come sopra dal
per 8 battute.*



Handwritten musical score for three staves. The first staff contains the lyrics: *Mentre i guerrieri allora miete il de brando in campo Neppur di gioia un lampo*. The notation includes various rhythmic values and dynamic markings. The second and third staves contain rhythmic patterns. A dynamic marking 'cres' (crescendo) is visible at the bottom right.

Handwritten musical score on aged paper, featuring multiple staves and sections labeled A, B, and C. The notation includes various musical symbols such as notes, rests, and dynamic markings.

Section A (top right):

Section B (middle right):

Section C (bottom right):

Lyrics (bottom left):

brilla Marilde in re.

Lyrics (bottom right):

Mentre i Guerrieri allori

B. C. 2

pp

pp

p

p

p

p

Miete de brando in campo neppur di gioia un tempo brilla Matilde in te nepp

cres

pro pro

cres

cres

lumi

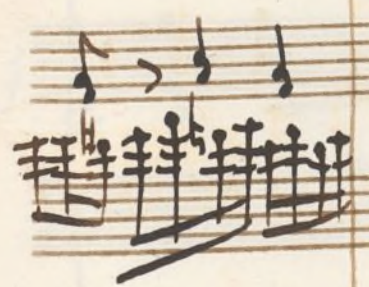
pur di gioja un lampo

brilla Matilde in te

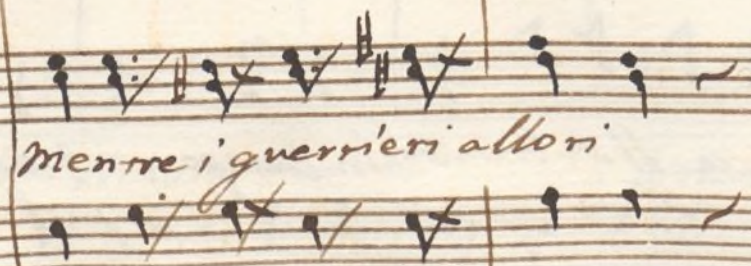
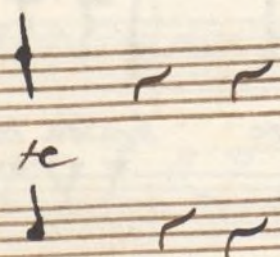
brilla Matilde in te

cres.

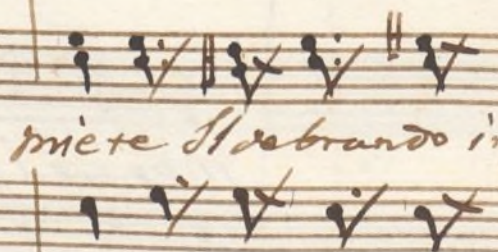
*Come sopra del 1. al 2.
per 15. battute.*



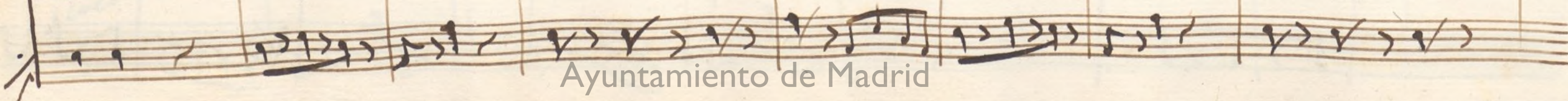
Mentre i guerrieri allori *miere il rebrando in campo* *neppur di gioja un tempo* *brilla maril de in*



Mentre i guerrieri allori



miere strabando in



Handwritten musical score on six staves. The notation includes various musical symbols such as notes, rests, and bar lines. The first staff has a '1.' above it, and the second staff has a '2.' above it. The third staff has a '3.' above it, and the fourth staff has a '4.' above it. The fifth staff has a '5.' above it, and the sixth staff has a '6.' above it. The lyrics are written below the staves, starting with 'Campo neppur di gioja di gioja un lampo brilla ma til de in te ma til de in re. neppur di'.

1. 2. 3. 4. 5. 6.

Campo neppur di gioja di gioja un lampo brilla ma til de in te ma til de in re. neppur di

2.

3.

4

5.

6

a

b.

c.

gioja di gioja un tempo brilla matil le in te ma - til le in te neppur di gioja

Ayuntamiento de Madrid

Handwritten musical score on a single page, divided into measures labeled a., b., c., and d. The score includes vocal lines with lyrics and instrumental parts with various musical notations.

Lyrics:

di gioia un lampo
brilla Matilde
Matilde in
te ma - ril - de in
te maril - de in

Instrumental Notations:

- Measures 1-4: Various musical notations, including a large diagonal slash in measure 2.
- Measures 5-8: Complex musical notations, including a large diagonal slash in measure 6.
- Measures 9-12: Complex musical notations, including a large diagonal slash in measure 10.
- Measures 13-16: Complex musical notations, including a large diagonal slash in measure 14.
- Measures 17-20: Complex musical notations, including a large diagonal slash in measure 18.
- Measures 21-24: Complex musical notations, including a large diagonal slash in measure 22.
- Measures 25-28: Complex musical notations, including a large diagonal slash in measure 26.
- Measures 29-32: Complex musical notations, including a large diagonal slash in measure 30.
- Measures 33-36: Complex musical notations, including a large diagonal slash in measure 34.
- Measures 37-40: Complex musical notations, including a large diagonal slash in measure 38.
- Measures 41-44: Complex musical notations, including a large diagonal slash in measure 42.
- Measures 45-48: Complex musical notations, including a large diagonal slash in measure 46.
- Measures 49-52: Complex musical notations, including a large diagonal slash in measure 50.
- Measures 53-56: Complex musical notations, including a large diagonal slash in measure 54.
- Measures 57-60: Complex musical notations, including a large diagonal slash in measure 58.
- Measures 61-64: Complex musical notations, including a large diagonal slash in measure 62.
- Measures 65-68: Complex musical notations, including a large diagonal slash in measure 66.
- Measures 69-72: Complex musical notations, including a large diagonal slash in measure 70.
- Measures 73-76: Complex musical notations, including a large diagonal slash in measure 74.
- Measures 77-80: Complex musical notations, including a large diagonal slash in measure 78.
- Measures 81-84: Complex musical notations, including a large diagonal slash in measure 82.
- Measures 85-88: Complex musical notations, including a large diagonal slash in measure 86.
- Measures 89-92: Complex musical notations, including a large diagonal slash in measure 90.
- Measures 93-96: Complex musical notations, including a large diagonal slash in measure 94.
- Measures 97-100: Complex musical notations, including a large diagonal slash in measure 98.

te brilla ma - til - de in re.