

1.º No Legado V

Leg.º No N. 16

+

Mus 167-11

Tonadilla

a duo

Con

Violines, de los

Telos de Leg.º 5.º no 30

Cloxi

De

D.º Pablo Esteve 1163

And:te

le assay

Anfiso

Clori huyendo de las y-ras de Clori
buscando al cauteloso de Anfiso

bella
pengo

del monte me he ve-
donde se me ocu-

ni do
ta do

por si a quino me en cuenta
pues a quino le en cuenta

por
pues

*Surge q^e esta ofen-
mas Cielos no es-*

Conafecro
dida a quel *Pues no lo crea*
q^e esta duixmienio

q^e acilla so lo y dolatran *Sentidos y po-*
es te ace ra do fi lo *Atabiase su*

ten cias *Sen*
Se cho

Canino
no dueño mio *no tengas celos* *no te ofendi*
Con ravia, Amante falso *Ingrato Aleve* *mueret mianor*

3

Comenzima

quando te ve a la 2^a no *allegro*

tr *sin ti no* *vi ve*

3 *4* *3* *4*

a *vo*

Dime dueño adorado. porq. mi muerte.

de q.ⁿ tienes los celos Dime dueño Ado-

mi bien a ti enguexo no me niegues los.

quieres

rado

Si mettenes ya

Clon de Aranda los es

braços

Clon por no dar los es

mucro

ella

tava

Contus des derres

tencontie ablando

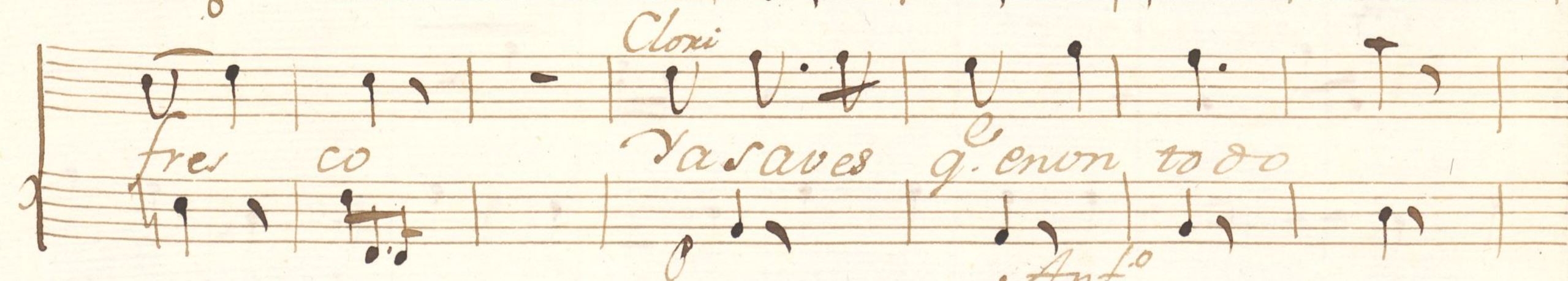
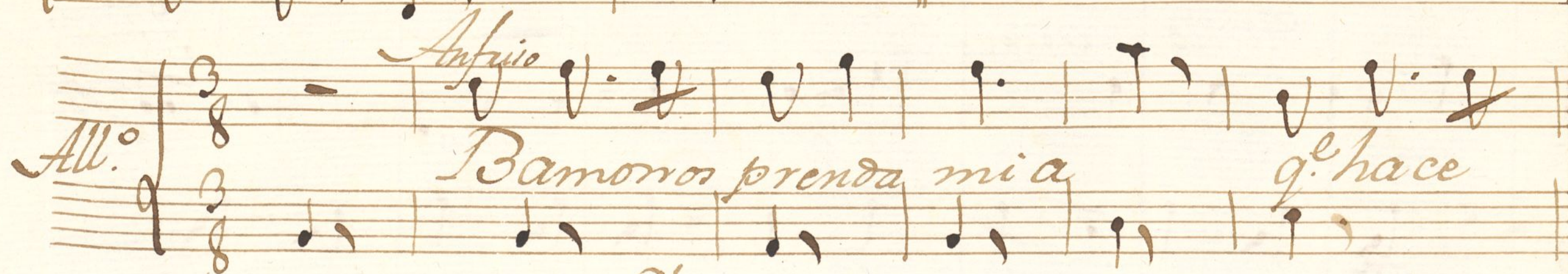
Ya lo me ablando

Con *Clori*
 por Ingrato por falso
 es verdad q^e le abado
 ten piedad Tome riendo

Re^{do}
 por a leve y riay
 mas fue casuali.
 Des te pecho Afli.

Re^{do} *ten.*
 por pue a celos me matas p^s
 dad Siempre alas prevenciones
 lido tomalos con el alma

provaras mixigon
e se no m brelas dan
Dueno Querido
Dormas
Vigue
Di bol vexas a berla
Per do
no no Amado Dueno Juxa lo portu
ten
vi da
Ya yo te creo



arbo lito a dios bamo nos arbolito a
bamo nos arbolito a dios bamo nos

dios arbo lito a dios Pero las segui.
arbo lito a dios

di llas q^e son muy

guapas oyelas chic c. c. c. ariendelas

Handwritten musical notation on a single staff. The lyrics are: *c. c. c. c. cucchen las c. c. c. c.*

Handwritten musical notation on a single staff. The lyrics are: *miren las c. c. c. c. c. c. q. Son chuscas y*

Handwritten musical notation on a single staff. The lyrics are: *grapas q.*

Handwritten musical notation on a single staff. The lyrics are: *And^{te} quando cant.*

Handwritten musical notation on a single staff. The lyrics are: *Amante tiene todo estomen.*

to

to goe, to

mento

Caxi n̄i Caxi n̄i to si ti ti ti

ti ti ti quere me quere me tu am̄i v, v, v,

U. U. U. U. tuxu U. tuxu U- tuxu

pero al a cer la Pace

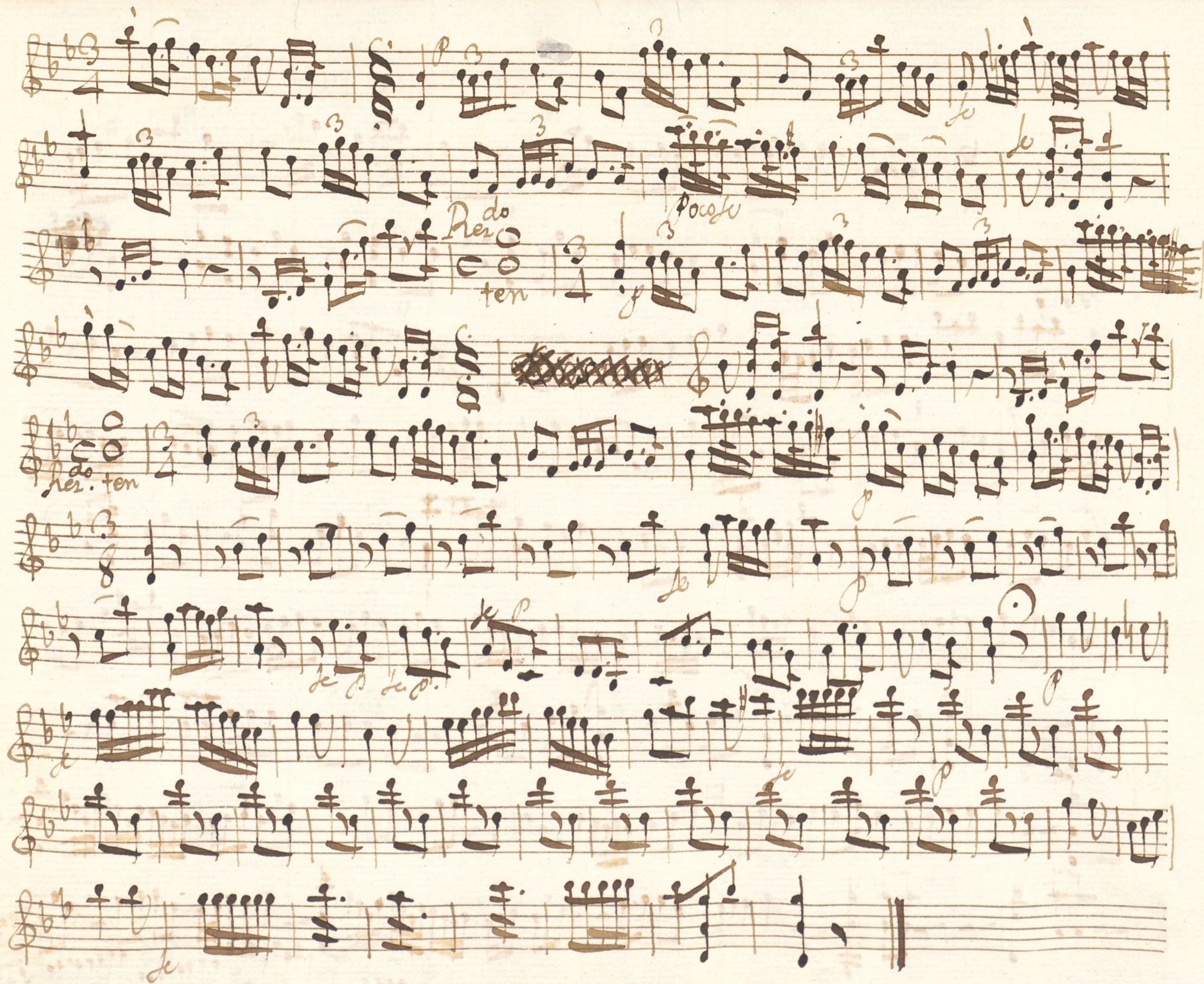
gusto y contien to que





Violin I. Tondilla aduo los Celos de Clori

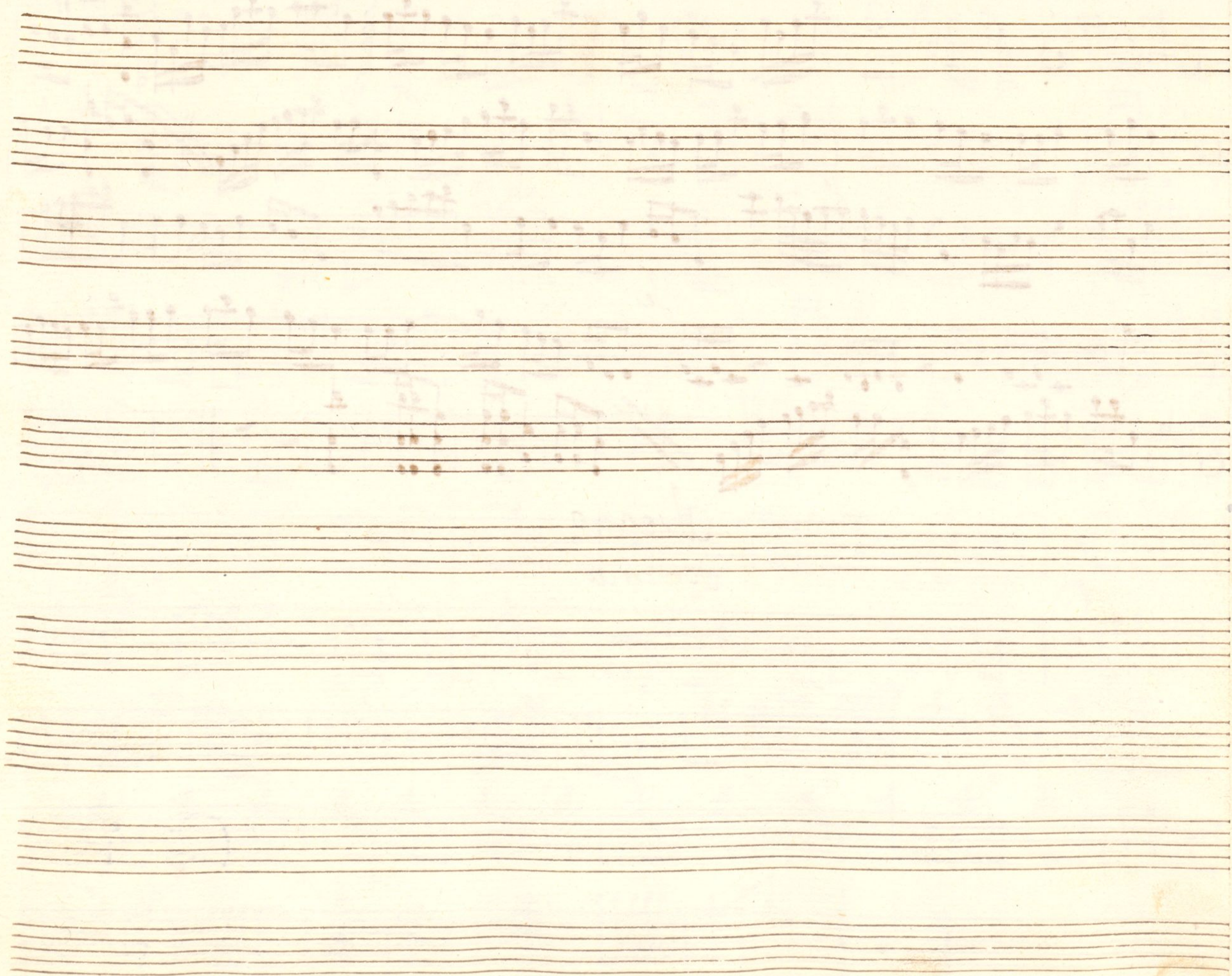
Handwritten musical score for Violin I. The score is written on ten staves. The first staff begins with the tempo marking "And." and the key signature of two flats (B-flat and E-flat). The music is in 6/8 time. The notation includes various musical symbols such as notes, rests, and dynamic markings like "p" (piano) and "le" (forte). There are also some handwritten annotations in brown ink, including "dol" (dolce) and "le allay". The score concludes with a double bar line and a final cadence.



And. te Seg 5 8 6 3

2. vers

allegro
Dor mas



t

Violin 2^o

Tonadilla a duo

Los Celos de Cloxi:

Handwritten musical score on ten staves. The notation includes treble clefs, a key signature of two flats (B-flat and E-flat), and a 6/8 time signature. The music features various note values, rests, and dynamic markings such as *p* (piano), *fe*, *dol* (dolce), and *All.^{to}* (Allegretto). The lyrics "Arai" and "Ainfe fearay." are written below the staves. The manuscript is on aged, slightly torn paper.

Handwritten musical score on ten staves. The notation includes various musical symbols such as clefs, key signatures (three flats), time signatures (3/4, 4/4, 6/8), and dynamic markings (p, f, po, fe, ten, All.^o). The score is written in a cursive, historical style.

Annotations and markings within the score include:

- la 2^a vez no* (written above the first staff)
- come prima* (written below the first staff)
- Repite al segno* (written across the second staff)
- Poc. fe* (written below the fourth staff)
- ten.* (written below the fourth staff)
- Poc. fe* (written below the fifth staff)
- ten* (written below the sixth staff)
- fe* (written below the sixth staff)
- Poc. fe* (written below the seventh staff)
- All.^o* (written below the seventh staff)
- P. ten* (written below the eighth staff)
- fe* (written below the eighth staff)
- Volte p.^{to}* (written below the tenth staff)
- Do mas.* (written at the end of the fifth staff)

Handwritten musical score on aged paper, featuring ten staves of music. The notation includes various musical symbols such as clefs, key signatures (three flats), time signatures, and dynamic markings like *p* and *fe*. The score is divided into sections, with *And. Sep.* written on the fifth staff and *al segno doi mas.* at the bottom right.