

Mus 1-2

Andromeda y Perseo, Comedia.

BIBLIOTECA HISTORICA MUNICIPAL



1200000467

ANDROMEDA Y PERSEO.

PARTITURA

VIOLIN 1<sup>o</sup>

VIOLIN 1<sup>o</sup>

VIOLIN 2<sup>o</sup>

VIOLIN 2<sup>o</sup>

OBOE 1<sup>o</sup>

OBOE 2<sup>o</sup>

TROMPA 1<sup>o</sup>

TROMPA 2<sup>o</sup>

BAJO

BAJO

BAJO

CORO 1<sup>o</sup>

CORO 2<sup>o</sup>

1  
E. M. 1-1 pertenencia a esta

misma obra

t

5-2  
Musica

Com.ª

Andromeda y Perseo.

ID 1200000467

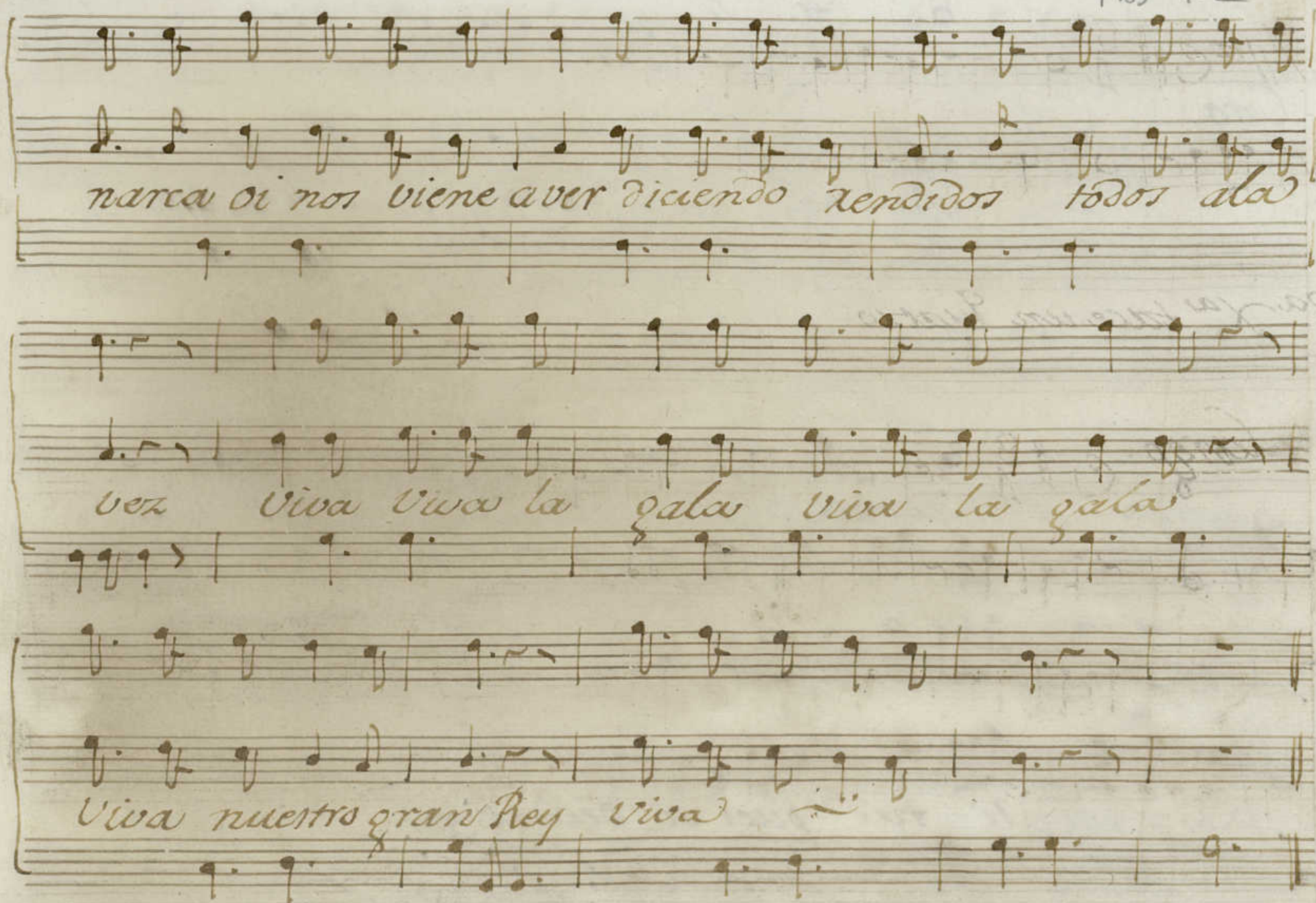
Ayuntamiento de Madrid

# Pastoral.

Coro.

Los Campos se vistan de Rosa y clavel

y los Corazones de gozo y placer pues nuestro Almo.



marca oí nos viene aver diciendo rendidos todos ala  
vez Viva Viva la gala Viva la gala  
Viva nuestro gran Rey Viva

Coro.

No *sp.* *All.* mira atiende ver-

cucha mas quanto oigay ve as es ver.

dad y menti ra pue si deidad se ve ra

con Xigores tu Vida ame nara tu

Didad ai q. tu Vida defienda tu

*Amoroso.*

*Todq.<sup>a</sup>*

*Jupiter*

*e - na morado dela Ermorea Danae*

*vella dela en lluvia de o*

*ro introduce en mar a*

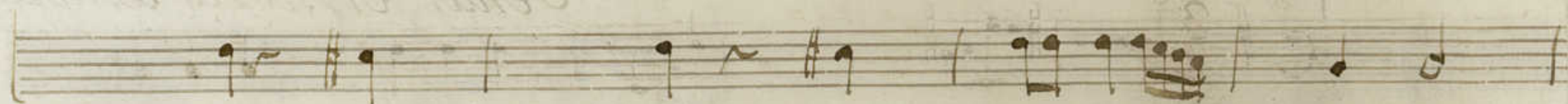
*mor a su fi nera a su fi nera*

en lluvia de oro intro duce mas valor

su fineza a su fineza

2.ª X.a

Ama espera y con fia por q.º no puede



Rez.º y Aria

3a pa

Mvs 1-2 5

*And. no*

*Veni Ermosa templen*

*tus poderosas Itas ya q. no humildes votos*

*tantas victimas dignas como por una sola*

manchan tus aras con su sangre misma con

su sangre misma.

Largo.

La g<sup>e</sup> nace para ser es-

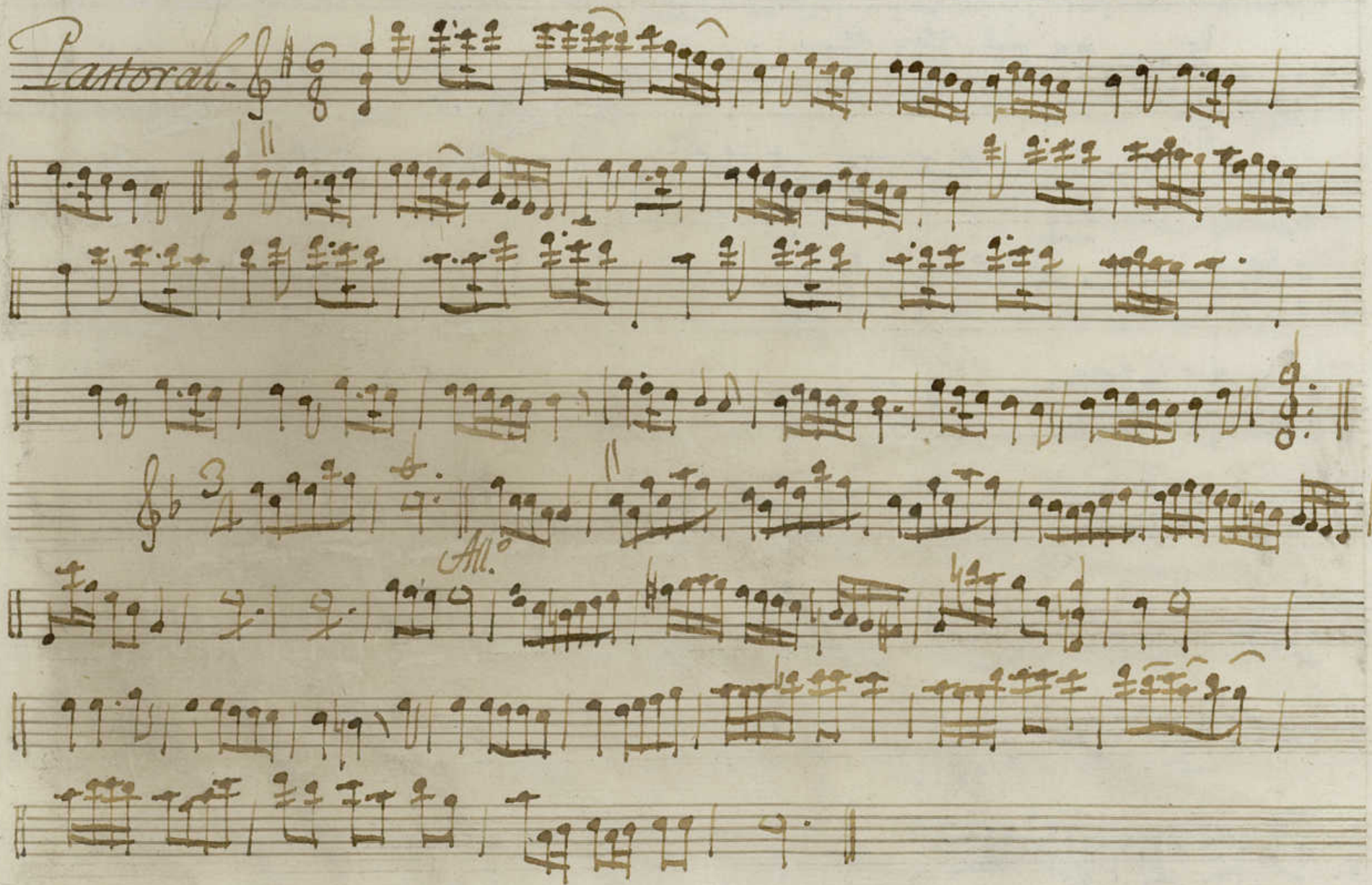
trago dela fortuna sienta gima llore y sufra

sienta gima llore y sufra llore y sufra.



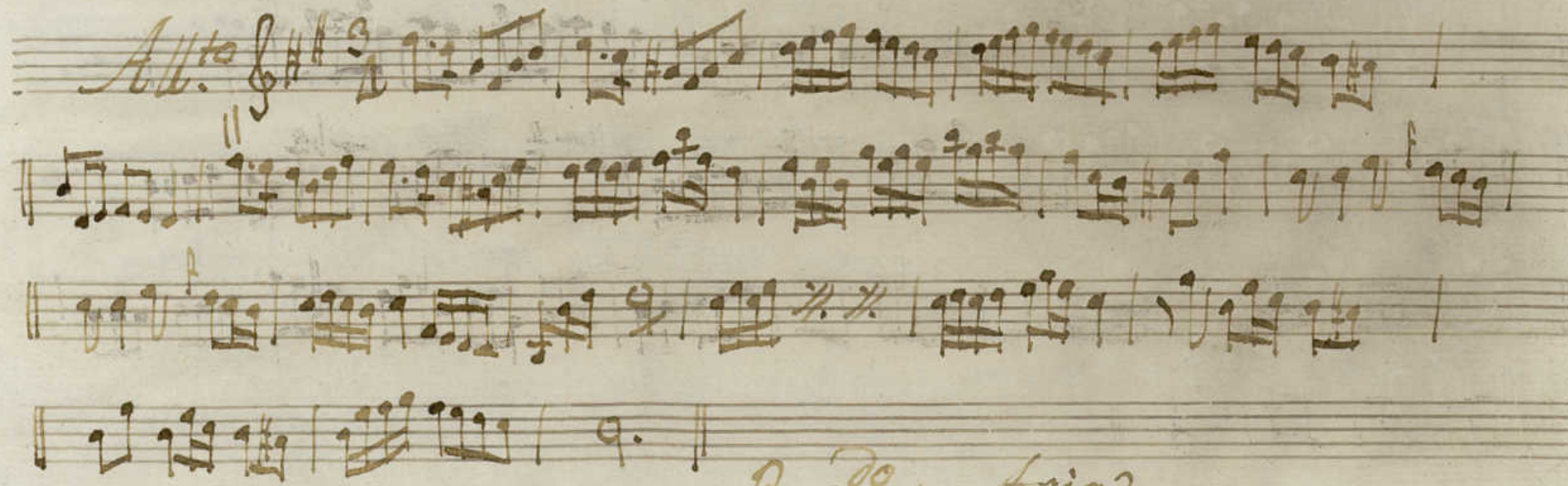
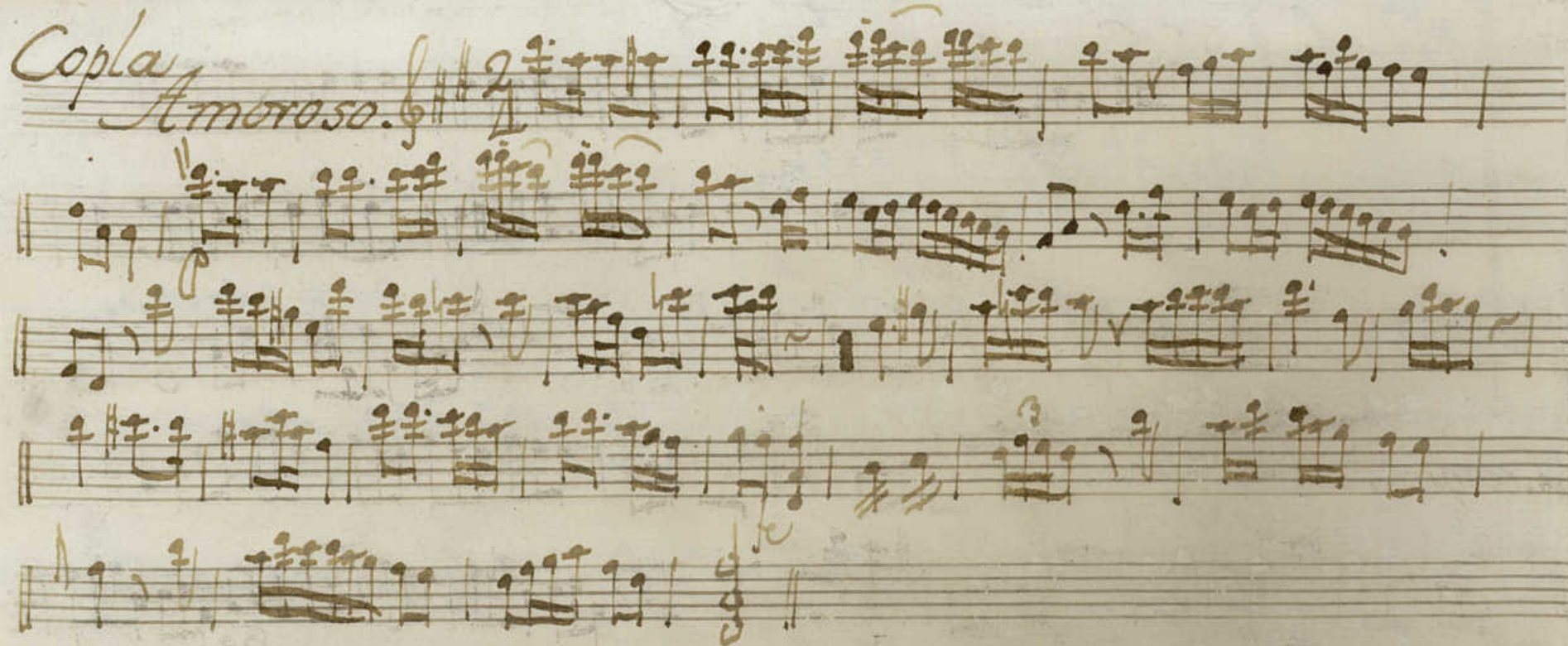
Violin 1.º Com. <sup>t</sup> Andromeda.

Mos 1-2



*Copla*

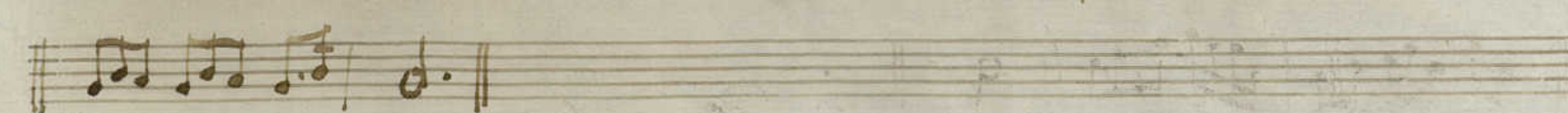
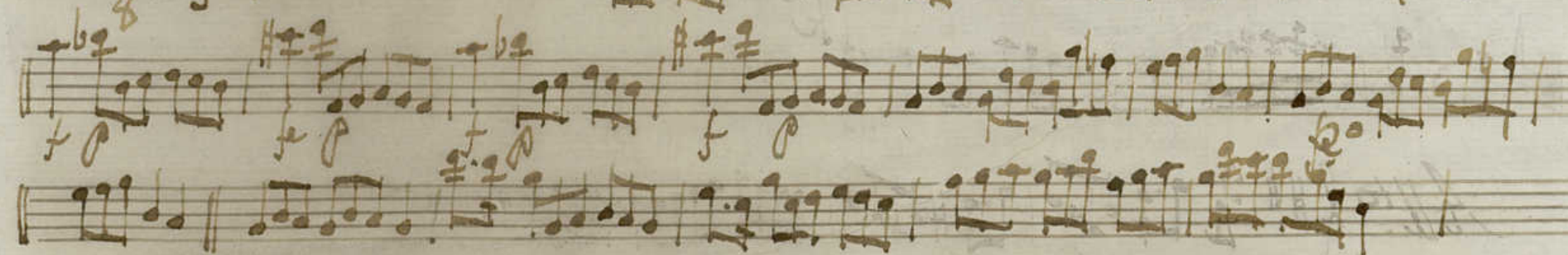
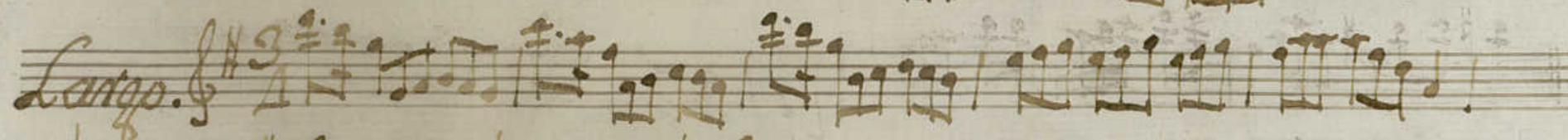
*Amoroso.*

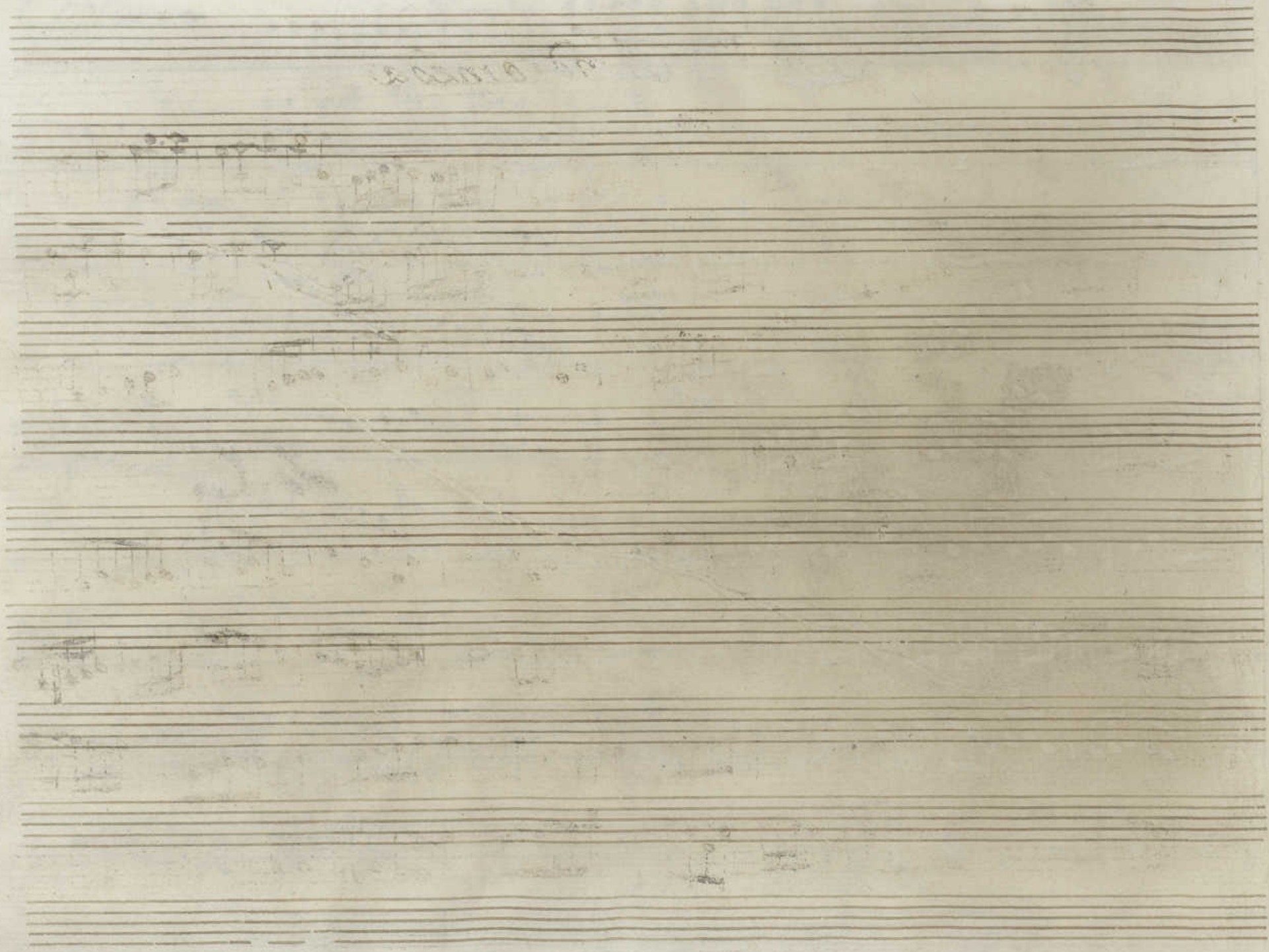


*Rez.<sup>do</sup> y Aria.*

3.º y 4.º

*And. mo*





Violin 1.<sup>o</sup> Com.<sup>a</sup> Andromeda.

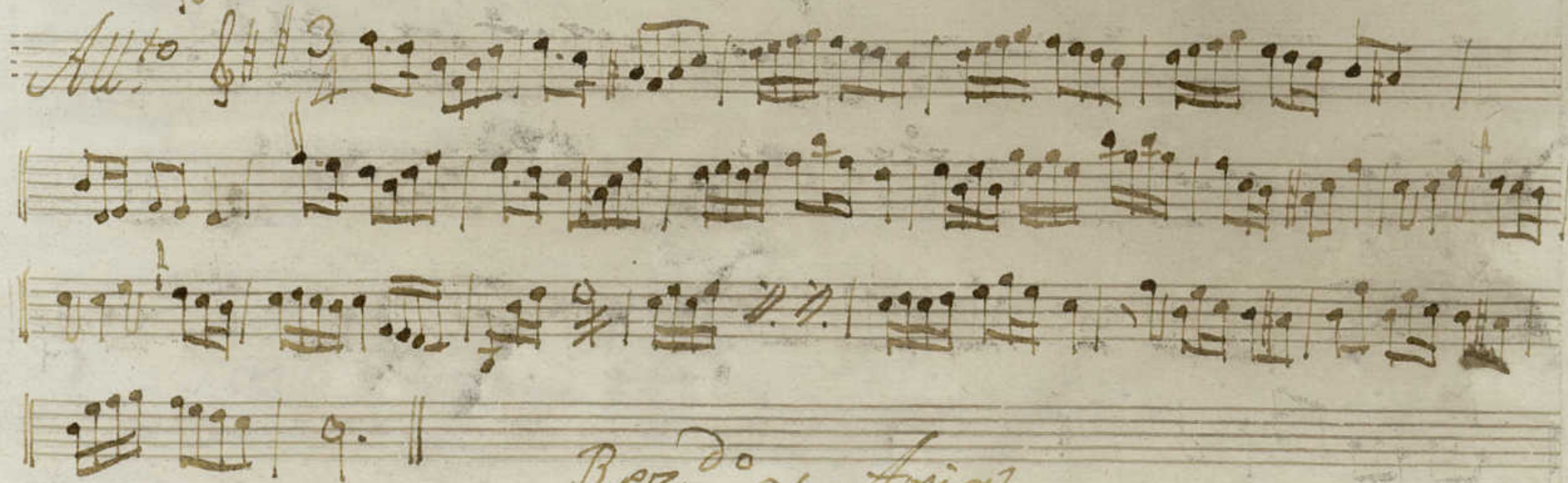
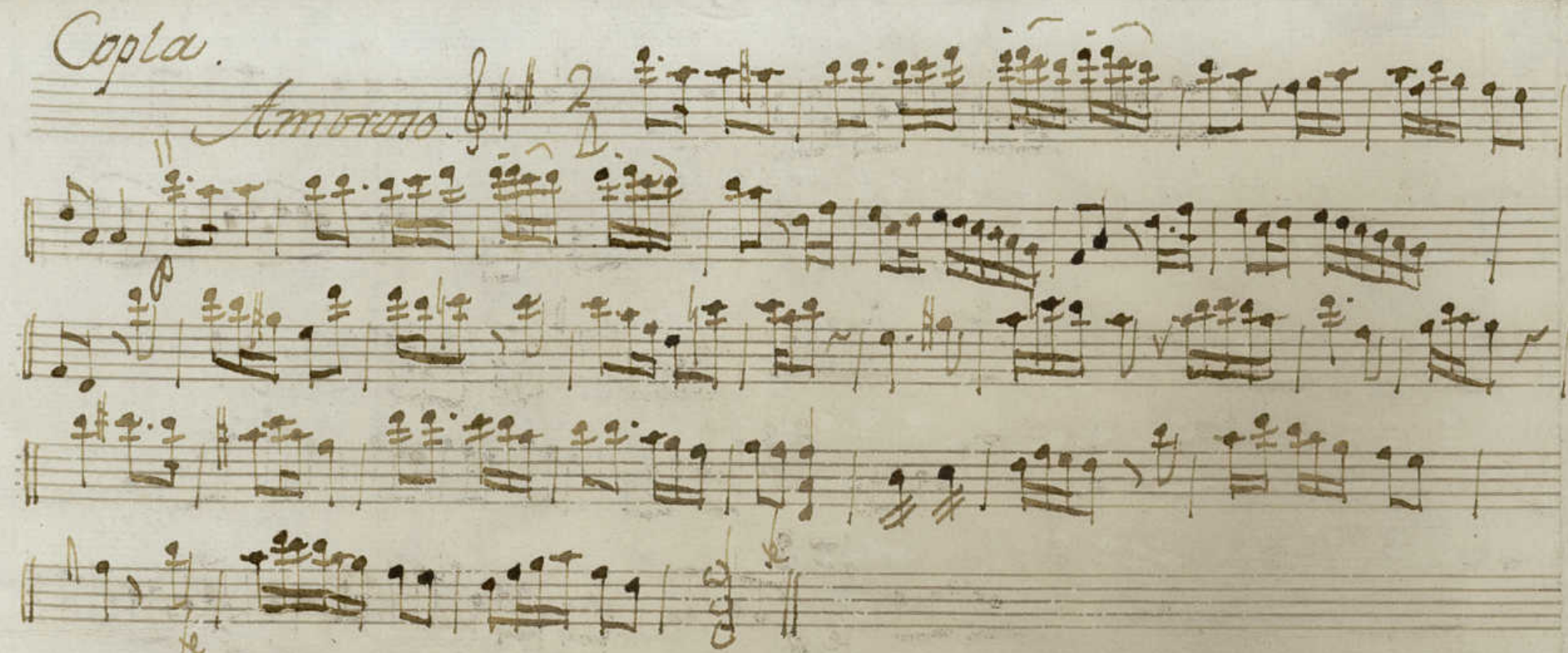
Mus 1-2

*Pastoral.*  $\text{G major}$   $\frac{6}{8}$

*Vexos* *Depite*

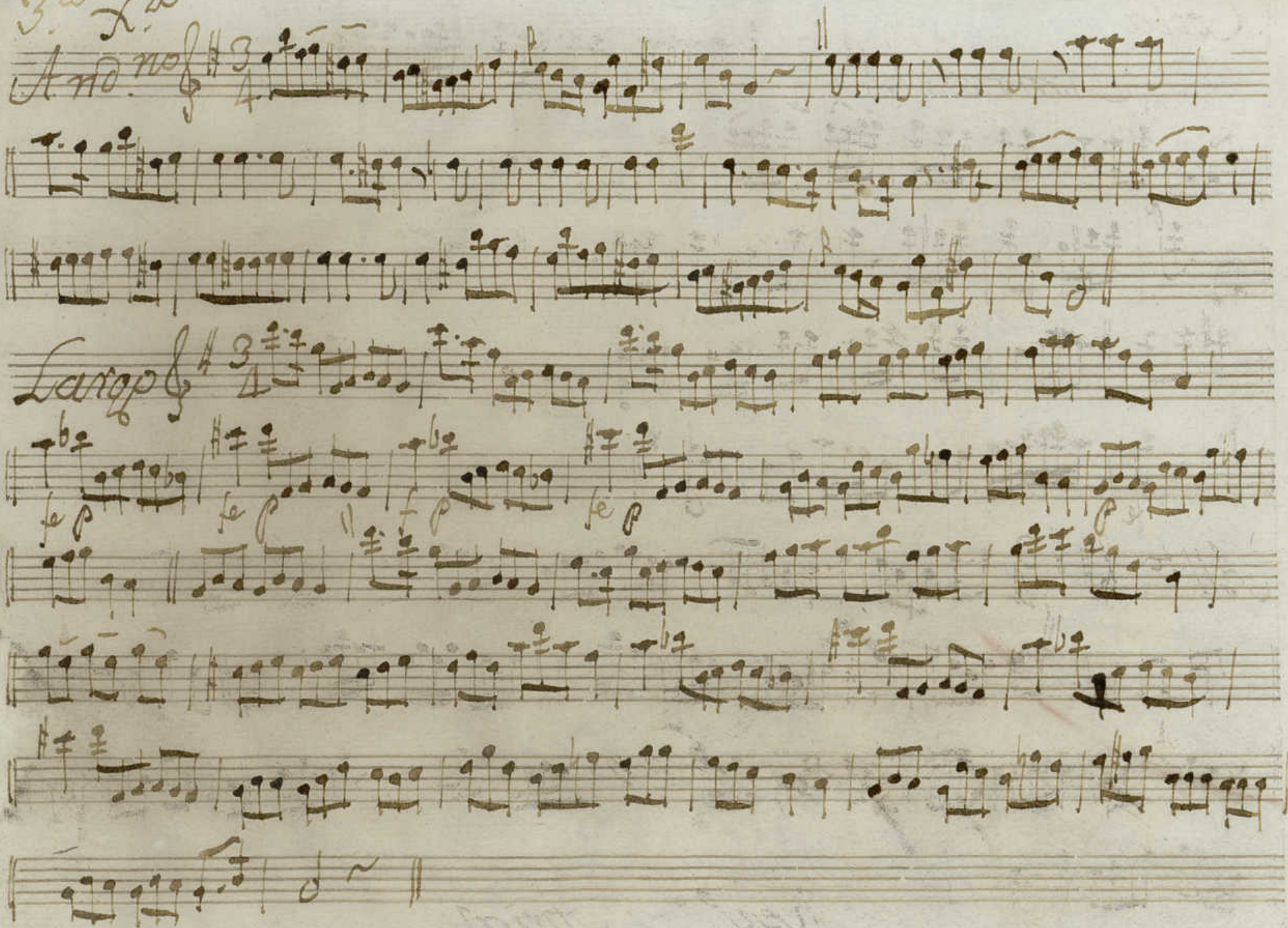
*Vexos* *All.*

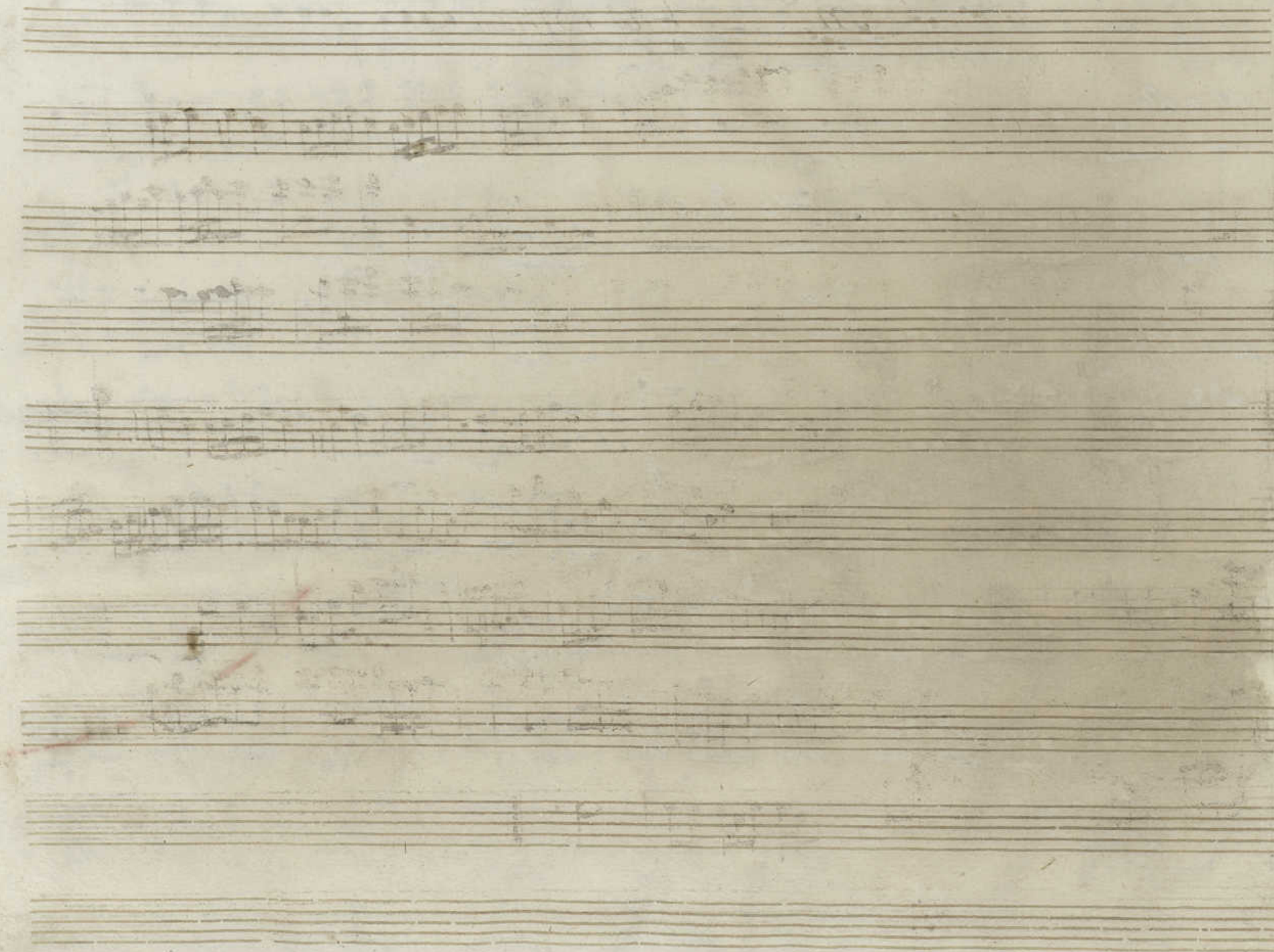
*Copla.*



*Rez.<sup>do</sup> y Arias.*

3<sup>a</sup> X<sup>a</sup>





Violin 2.<sup>o</sup> Com.<sup>a</sup> *Andromeda*.

Mus 1-2

*Pastoral*

*All.*

*D.C.*

*Cópla.*

*Alto*

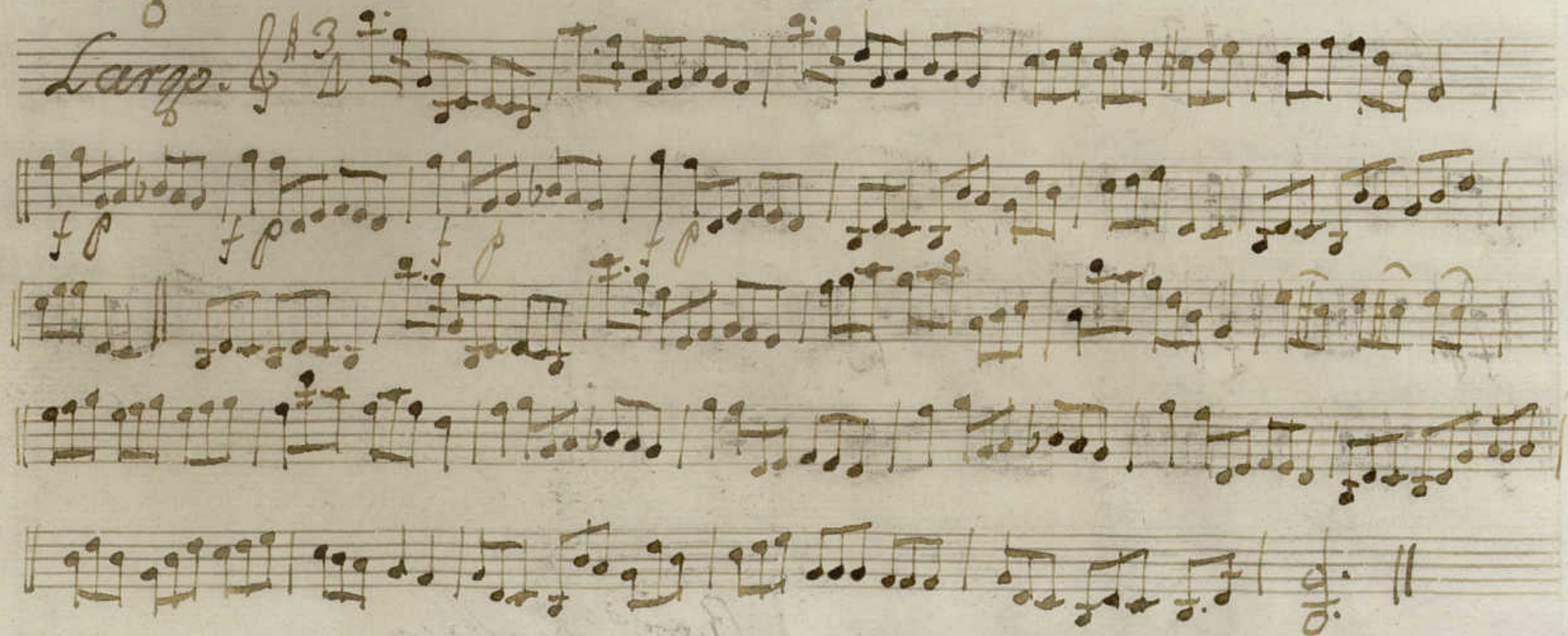
*Formada*

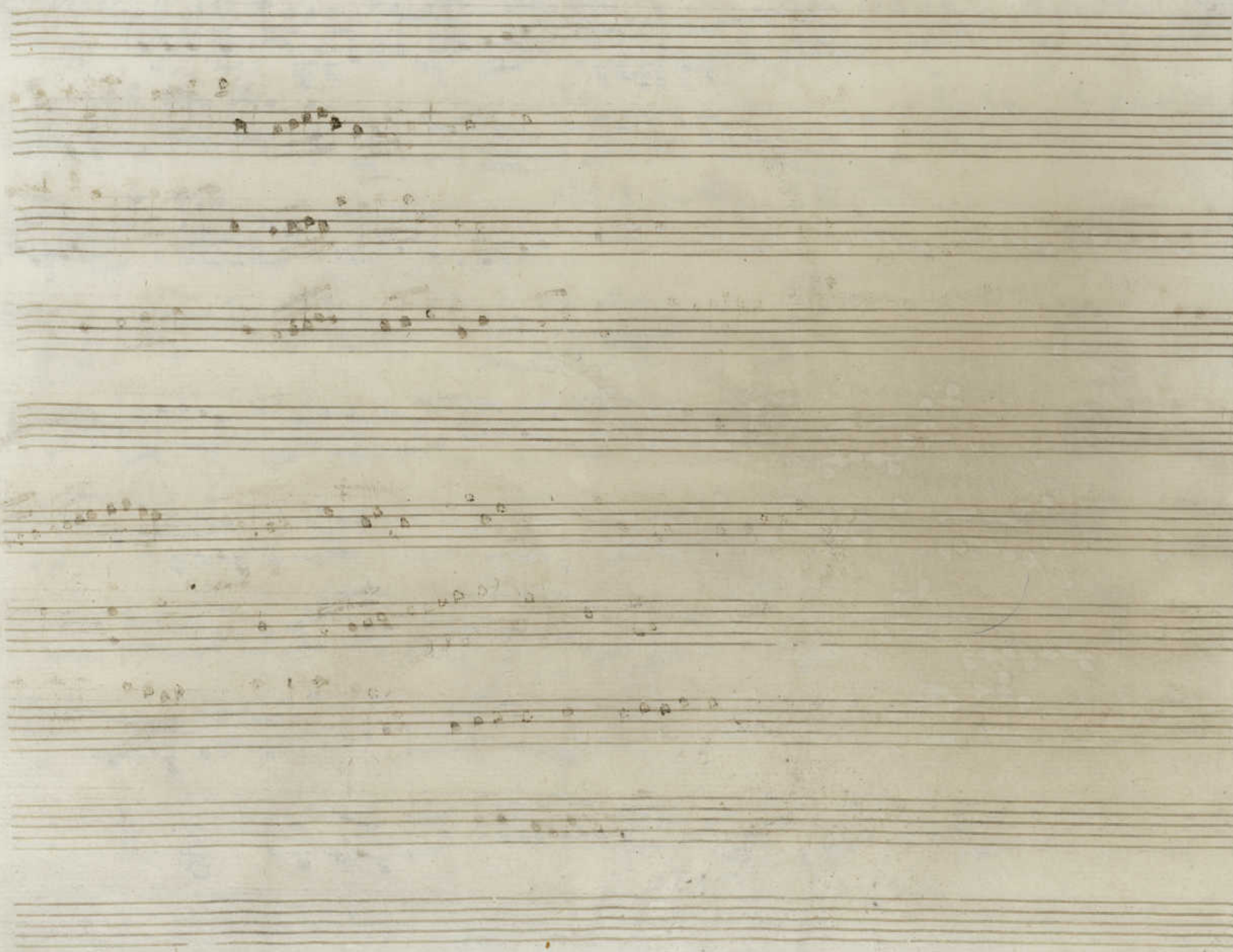
*Rez.º y Aria*

3<sup>a</sup> X<sup>a</sup> ~~And. no~~ *And. no*



*And. no*



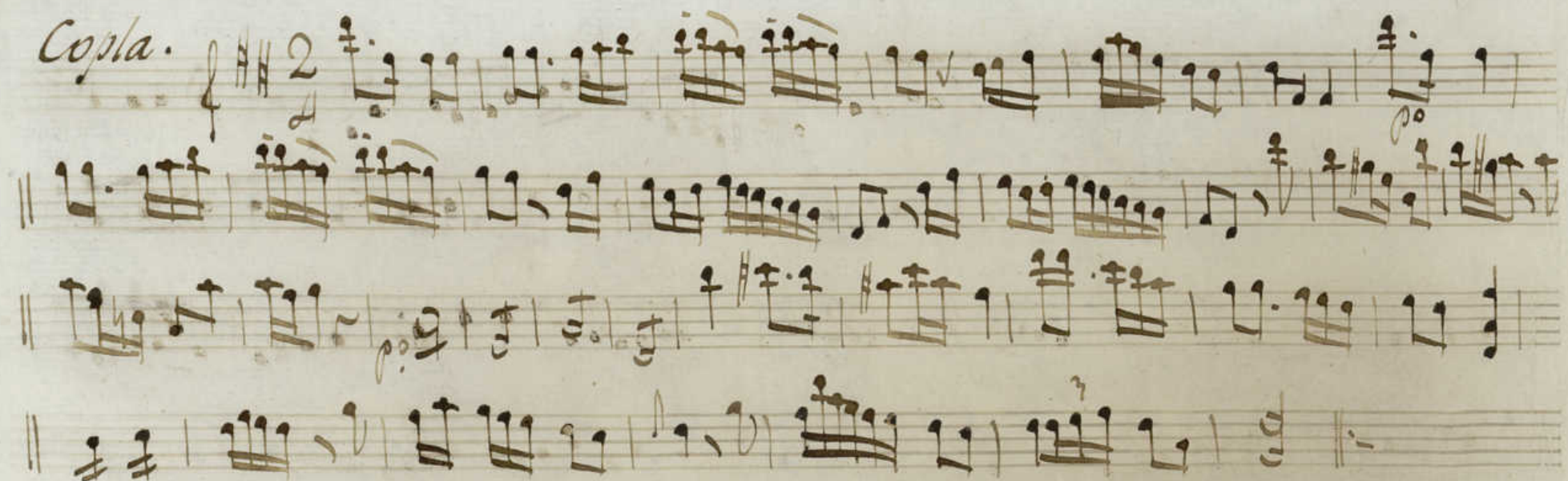


*Violin 2<sup>o</sup> Com.<sup>a</sup> Andromeda*

Mus 1-2

*Pastoral*  $\text{F} \# \frac{6}{8}$

*Trio*



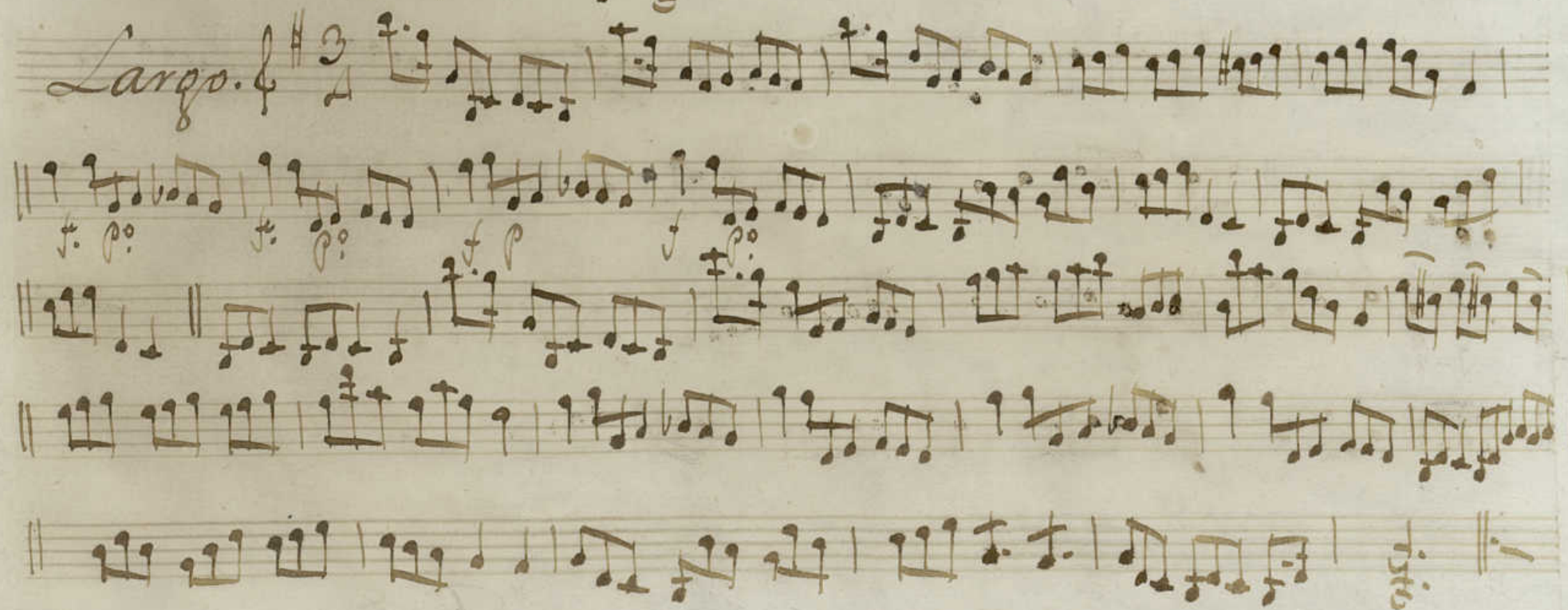
*Rec.<sup>do</sup> y Aria*

3<sup>a</sup> X<sup>a</sup>

*And<sup>no</sup>*



*Largo.*

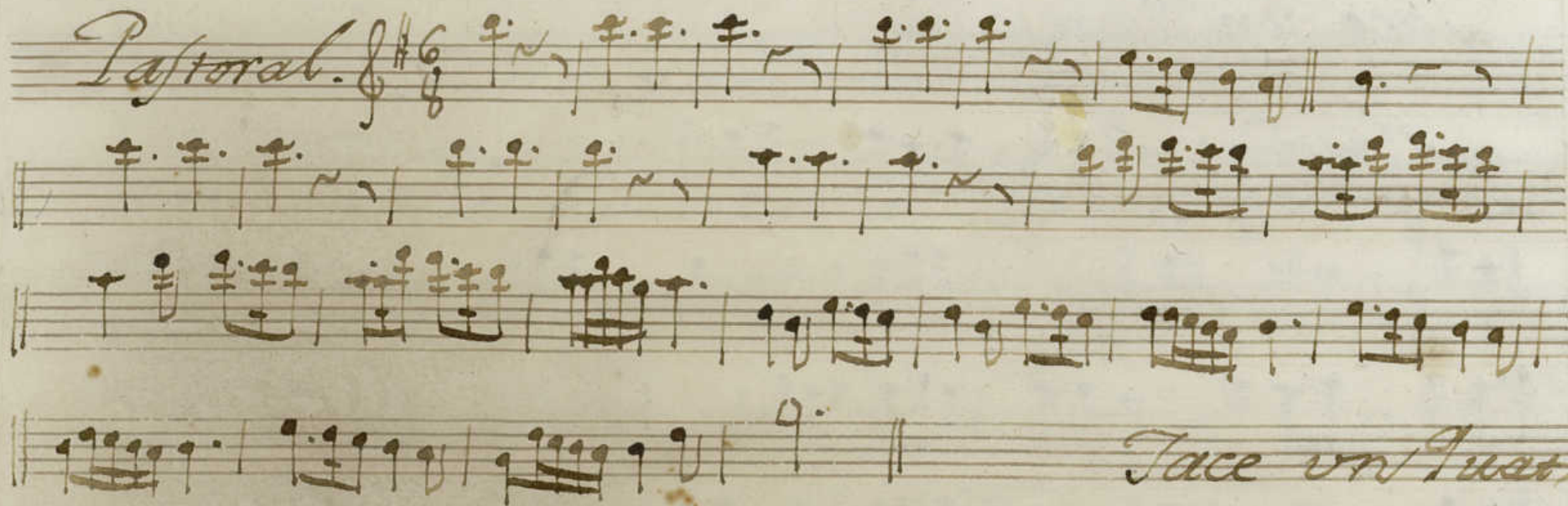


This block contains ten staves of handwritten musical notation. The notation is in ink and appears to be a single melodic line. The first staff begins with a treble clef and a key signature of one flat (B-flat). The notes are mostly quarter and eighth notes, with some rests. There are some faint, illegible markings above the staves, possibly indicating dynamics or performance instructions. The handwriting is somewhat cursive and typical of 18th or 19th-century musical manuscripts.

Finis

*Oboe 1.º Com.ª Antromeda*

Mus 1-2



*Tace un Quatro*



*Tace un Quatro y sigue Aria.*

3a Xa

Tace un Quatro.

*Alta*  
*Largo*

Handwritten musical score for a single instrument, likely a harp or lute, in 3/4 time. The score is written on five staves. The first staff begins with a treble clef, a key signature of one sharp (F#), and a 3/4 time signature. The music is written in a single melodic line with various note values, including minims, crotchets, and quavers. There are several accidentals, including sharps and flats. The piece concludes with a double bar line. The notation is in a historical style, with some ligatures and a '4' marking at the end of the first staff.

*Oboe 2.<sup>o</sup> Corn. <sup>r</sup> Andromeda.*



*Tace un Quarto.*



*Tace un Quarto*

*Rez.<sup>do</sup> y ARIA*

3<sup>a</sup> X<sup>a</sup>

Tace un Quatro

flauta.

Largo



*Trompa 1.<sup>a</sup> Com.<sup>a</sup> Andromeda.*

*Pastoral.* C: 6/8



*Missa um Quatro.*

*All.<sup>o</sup>* C: 3/4



*Copla Amoroso* C: 4/4



*Beata 2.<sup>a</sup> y 3.<sup>a</sup>*



<sup>t</sup>  
Trompa 2.<sup>a</sup> Com.<sup>a</sup> Andromeda

Mws 1-2



Aria

[illegible]