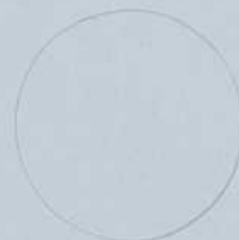


Mos 5-3

MORAL

La Azelina, comedia



BIBLIOTECA HISTORICA MUNICIPAL



1200005101

Leg.<sup>o</sup> 1. Num.<sup>o</sup> 16.

Mus 5-3

Musica en la Comedia

La Azelinas;

Del S.<sup>r</sup> Moral;



Covo.

Acto Segundo

Eiples

Pastor

37

Salud ala hermosa



Handwritten musical score for the first system, featuring four staves. The lyrics are written below the staves:

la amable Azelina

quel Cielo des si'na quel

Handwritten musical score for the second system, continuing the four-staff format. The lyrics are written below the staves:

a tan alto honor a tan

Cielo des si'na

a tan alto honor a tan



ato honor a ques ta o lo ro sa Suir

nalda Re vive y por siem pre vive fe



Handwritten musical score for two voices and piano. The first system contains two staves for voices and one for piano. The lyrics are "liz con tu amor" and "y por siempre vive fe".

Stave 1 (Voice 1): *liz con tu amor*

Stave 2 (Voice 2): *liz con tu amor*

Stave 3 (Piano):

Handwritten musical score for two voices and piano. The second system continues the melody with the lyrics "liz con tu amor fe liz con tu amor".

Stave 1 (Voice 1): *liz con tu amor fe liz con tu amor*

Stave 2 (Voice 2): *liz con tu amor fe liz con tu amor*

Stave 3 (Piano):



15

Versos  
y se repite al segno X





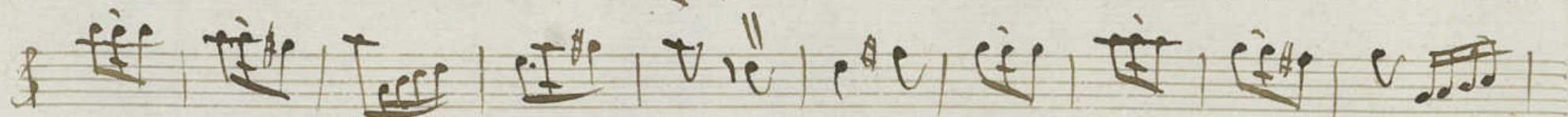
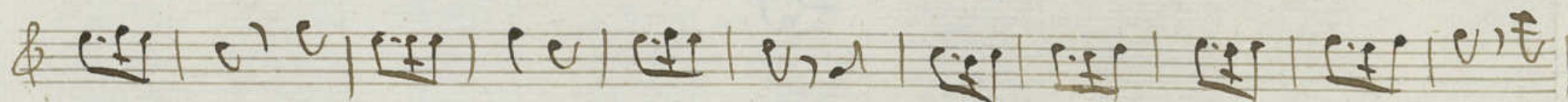
Violin Primero

MUS 5-3

en 2a Azequina;

Acto 2.º Coro

Pastoral &  $\frac{3}{8}$



Revenire al segno &



Violin Primero  
en 2a Azelina;

MVS 5-3

Acto 2º. Coro Pastoral & 3/8

Handwritten musical score for Violin I, Act 2, Coro Pastoral. The score is written on seven staves. The first staff has a treble clef and a 3/8 time signature. The music consists of eighth and sixteenth notes, with some rests and accidentals. The second staff has a treble clef and a 3/8 time signature. The music consists of eighth and sixteenth notes, with some rests and accidentals. The third staff has a treble clef and a 3/8 time signature. The music consists of eighth and sixteenth notes, with some rests and accidentals. The fourth staff has a treble clef and a 3/8 time signature. The music consists of eighth and sixteenth notes, with some rests and accidentals. The fifth staff has a treble clef and a 3/8 time signature. The music consists of eighth and sixteenth notes, with some rests and accidentals. The sixth staff has a treble clef and a 3/8 time signature. The music consists of eighth and sixteenth notes, with some rests and accidentals. The seventh staff has a treble clef and a 3/8 time signature. The music consists of eighth and sixteenth notes, with some rests and accidentals. The score ends with a double bar line and a repeat sign.



Violin segundo +  
en la Azelina;

Mus 5-3

Acto 2º. Coro Pastoral  $\frac{3}{8}$

Handwritten musical score for Violin II in the 'Azelina' opera. The score is for Act 2, Coro Pastoral, in 3/8 time. It consists of seven staves of music. The notation includes various note values, rests, and dynamic markings. A 'Vor' marking is present above the second staff. The piece concludes with a double bar line and the instruction 'Se repite al Segno'.



Oboe Primero

+

Mus 5-3

en la Azelina;

Acto 2º.

Coro

Pastoral & 3/8

Handwritten musical score for Oboe Primero, Acto 2º, Coro Pastoral. The score is written on six staves. The first staff shows the key signature (one sharp) and the time signature (3/8). The music is in a pastoral style, featuring a mix of eighth and sixteenth notes. The score ends with a double bar line and the instruction 'Se repite al Segno X'.

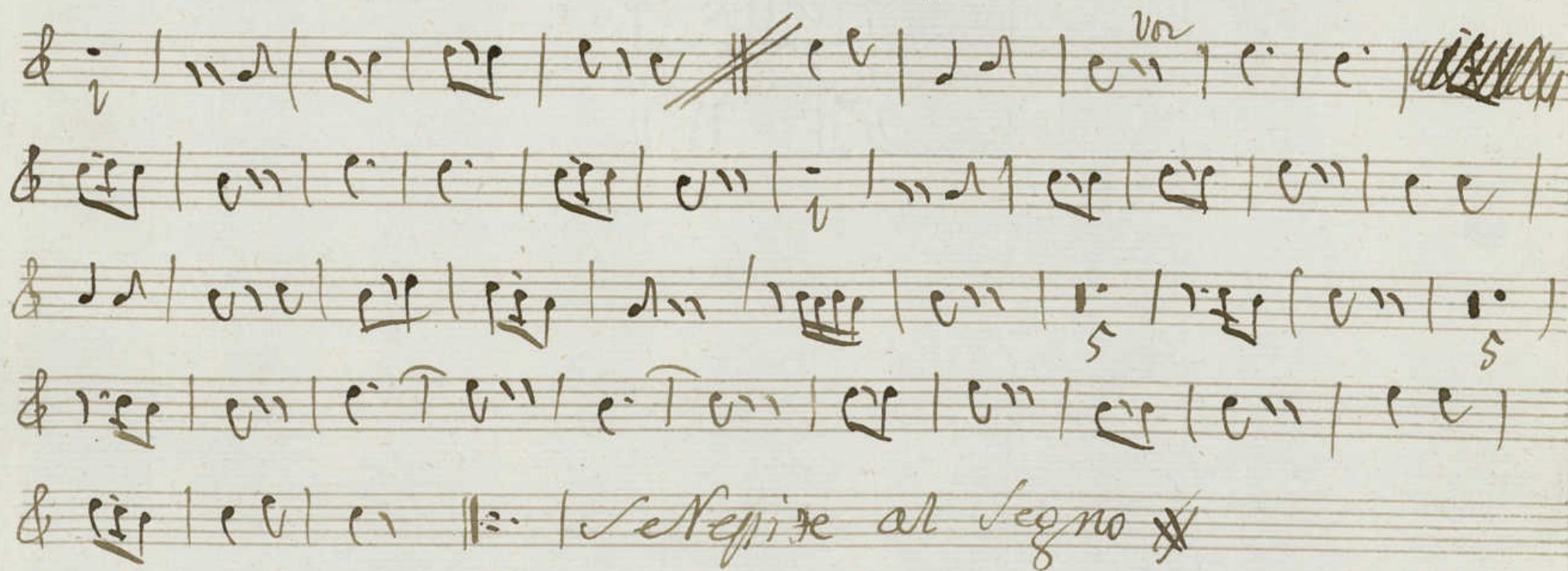


Oboe Segundo

MUS 5-3

en la Acelina;

Acto 2º. Coro Pastoral  $\frac{3}{8}$



1200005101

Ayuntamiento de Madrid



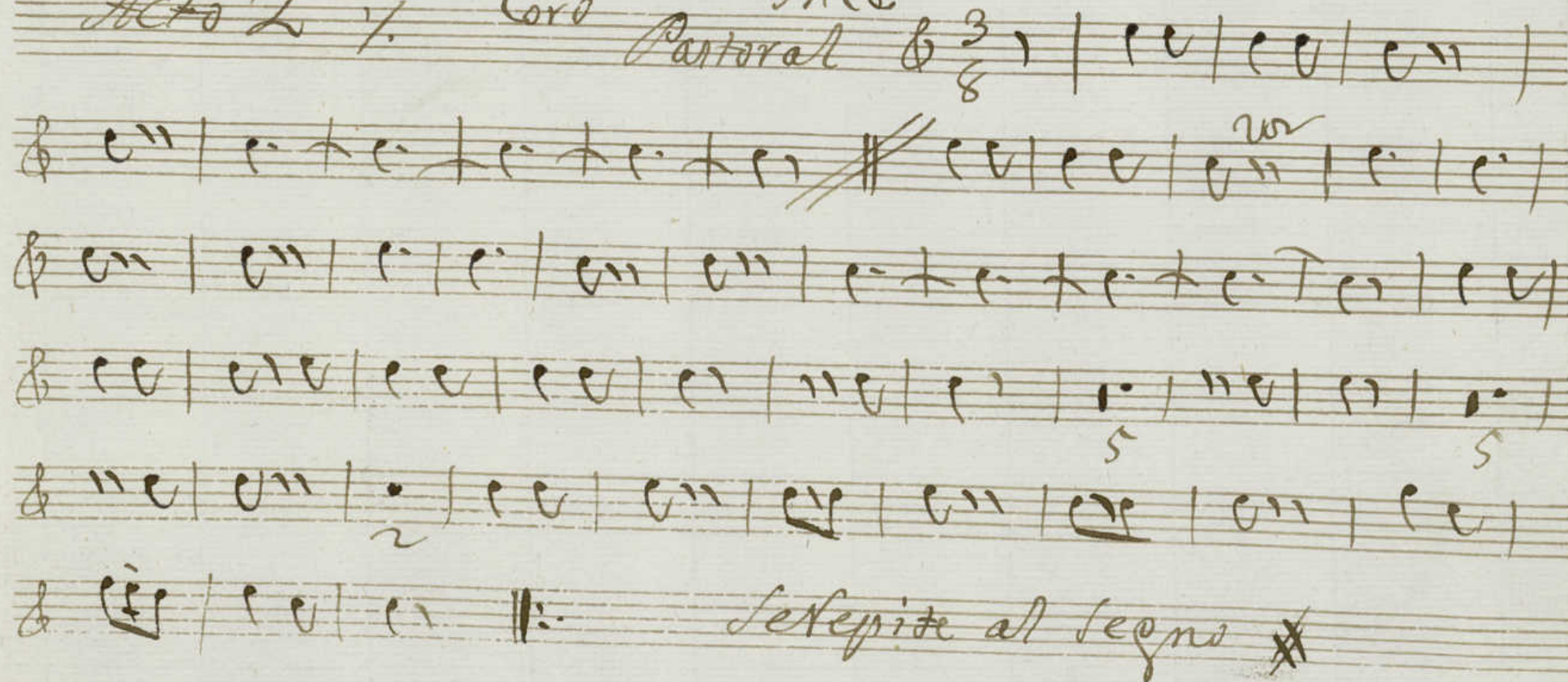
*Trompa Primera* +  
*En la Azelina;*

Mus 5-3

*Acto 2<sup>o</sup> / Coro*

*Inca Pastoral*

$\frac{3}{8}$





*Trompa segunda* +  
*en la Azolina;*

Mus 5-3

*Acto 2º y Coro* <sup>Ince</sup> *Pastoral*  $\frac{3}{8}$  | | | | |

$\frac{3}{8}$  | | | | | <sup>va</sup> | | | | |

$\frac{3}{8}$  | | | | | | | | | | |

$\frac{3}{8}$  | | | | | | | | | | |

$\frac{3}{8}$  | | | | | | | | | | |

$\frac{3}{8}$  | | | | | *Se Repite al segno* #



Contrabajo;  
en la. Azelina;

Mus 5-3

Acto 2<sup>o</sup>. Coro Pastoral  $\text{C} = \frac{3}{8}$

Handwritten musical score for Contrabajo in the key of A (la) for the Coro Pastoral. The score is in 3/8 time and consists of eight staves. The notation includes various musical symbols such as notes, rests, and bar lines. The first staff shows the beginning of the piece with a treble clef and a key signature of one sharp (F#). The subsequent staves contain the musical notation for the piece. The eighth staff ends with the instruction 'Se repite al segno' followed by a double bar line and a sharp symbol.



Contrabajo; Dupli<sup>do</sup> +

Mus 5-3

en la Azebina;

Acto 2<sup>o</sup>.

Coro

Pastoral

$\text{C} = \frac{3}{8}$

| T T | C C | C# C |

$\text{C} =$  | C | J J | J J | J J | J J | J T ~~||~~ C C | J J | J <sup>voz</sup> | T T |

$\text{C} =$  | C | C# C | C | T T | C C | C# C | C | J J | J J | J J | J J |

$\text{C} =$  | J | J J | C C | C T | T C | J J | C | J J | J J | J J | C C |

$\text{C} =$  | C C | C C | C | J J | J J | C C | C C | C C | C | J J | J J |

$\text{C} =$  | J C | J C | J C | J C | T T | C C | T T | C C | J J | J J | C C |

$\text{C} =$  | J J | J J || *Se Repite al segno* X