

Mus 6-10

¿ Pablo Esteve?

La Bella esposa [la buena esposa]

(1781)

[Texto de Comella]

[Representada junto a El Puerto de Flandes]

BIBLIOTECA HISTORICA MUNICIPAL



1200005123

Leg.^o 2.^o Num.^o 11.

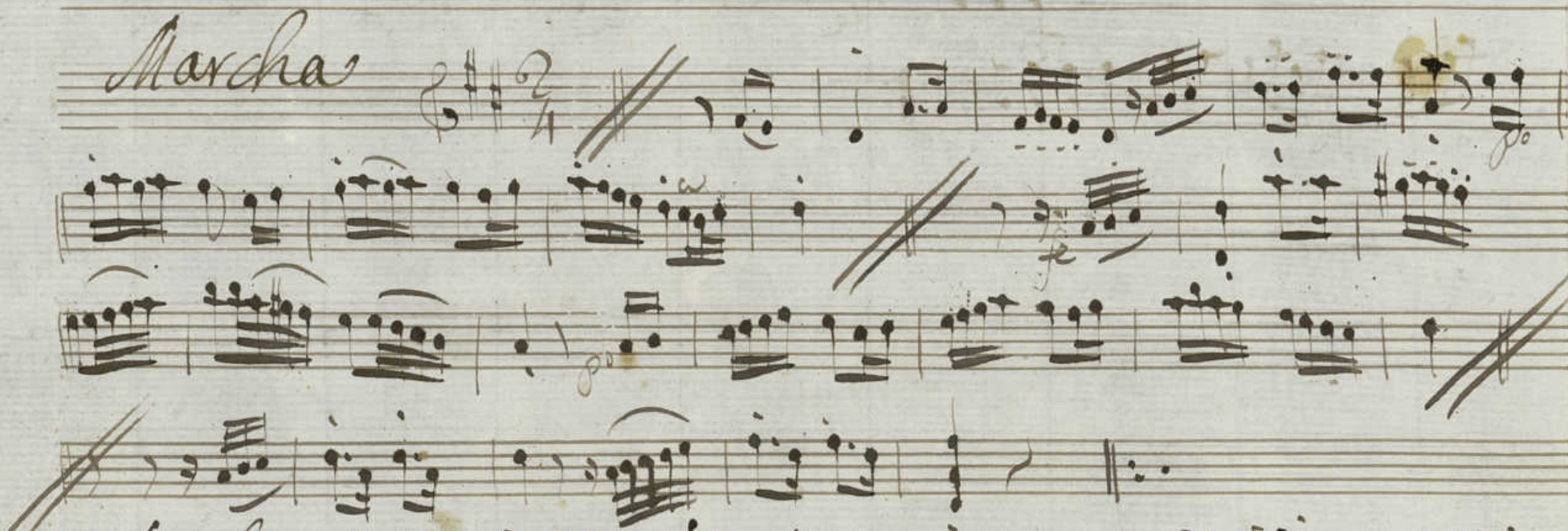
Mus 6-10

La Bella Esposa.

6-10.

Violin Primero ~~Alta~~
En la Vella Esposa;

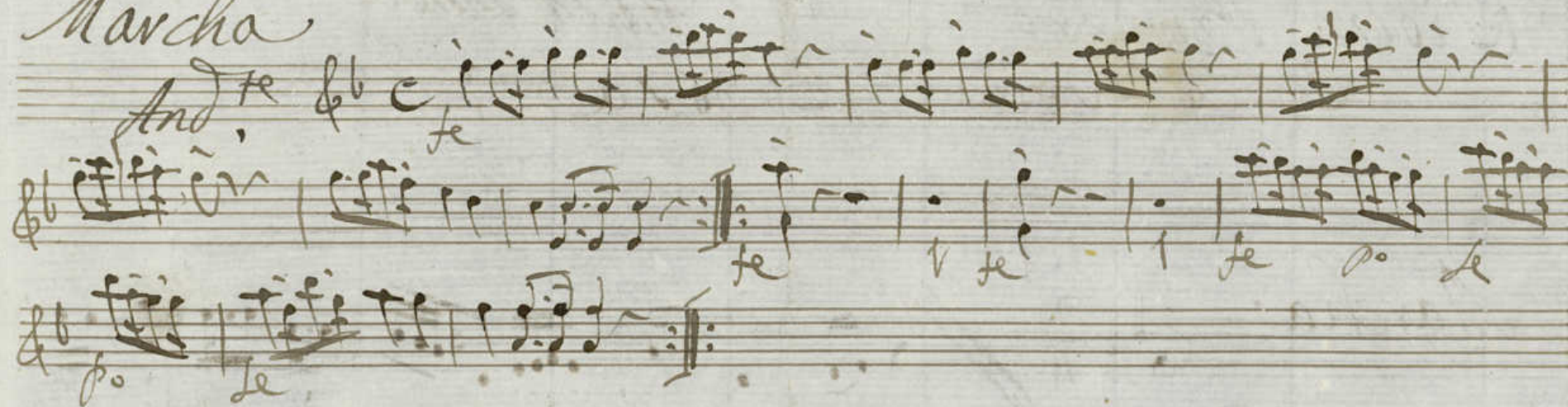
Marcha



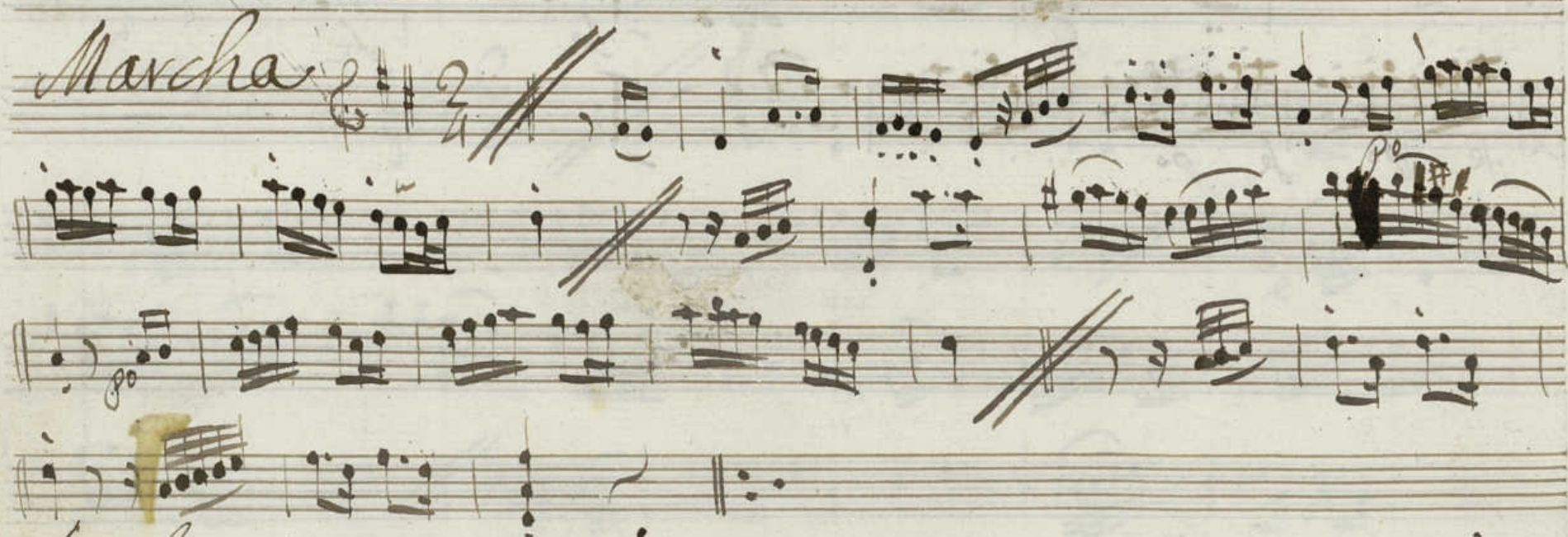
Marcha



Marcha



Violin Primero Dupli.^o +
en la Vella esportada;



Marcha

And.^{te}



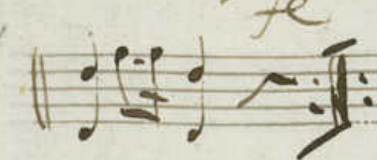
Violin Segundo

En la Bella Oposita;

Marcha



Marcha



Marcha

And.^{te}



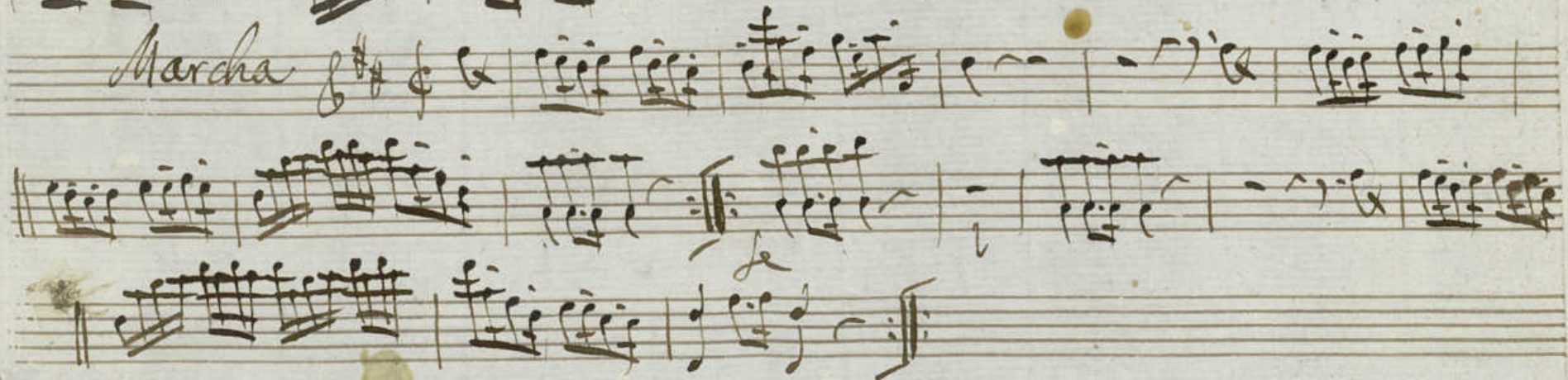
Violin Segundo +

En la Vella esposa;

Marcha



Marcha



Marcha

And.^{te}



oboe Primero +

In la Bella esposa;

Marcha



Marcha



Marcha And.º $\text{G}\flat$ C $\text{tr}\acute{\text{e}}\text{a}$ | $\text{tr}\acute{\text{e}}\text{a}$ | $\text{tr}\acute{\text{e}}\text{a}$ | $\text{tr}\acute{\text{e}}\text{a}$ |

Solo $\text{G}\flat$ | $\text{tr}\acute{\text{e}}\text{a}$ | $\text{tr}\acute{\text{e}}\text{a}$ | $\text{tr}\acute{\text{e}}\text{a}$ | $\text{tr}\acute{\text{e}}\text{a}$ | $\text{tr}\acute{\text{e}}\text{a}$ | $\text{tr}\acute{\text{e}}\text{a}$ | $\text{tr}\acute{\text{e}}\text{a}$ |

$\text{G}\flat$ | $\text{tr}\acute{\text{e}}\text{a}$ | $\text{tr}\acute{\text{e}}\text{a}$ | $\text{tr}\acute{\text{e}}\text{a}$ | $\text{tr}\acute{\text{e}}\text{a}$ | $\text{tr}\acute{\text{e}}\text{a}$ | $\text{tr}\acute{\text{e}}\text{a}$ | $\text{tr}\acute{\text{e}}\text{a}$ |

Viola Segundo + oboe Segundo

En 2a Bella Oportu;

Marcha



Marcha



Marcha

And.^{te}



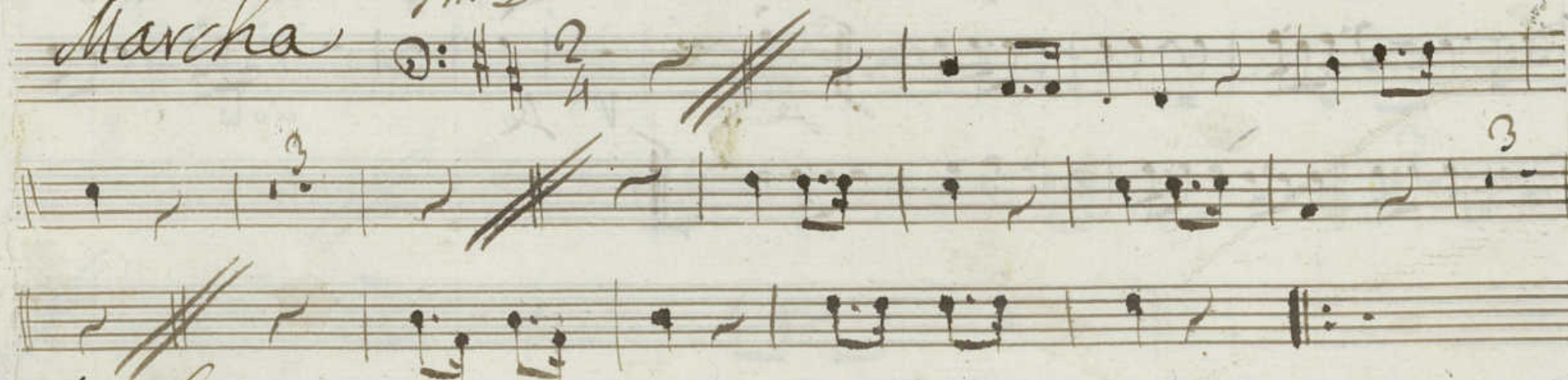
Trompa Primera +

En la Vella Espota;

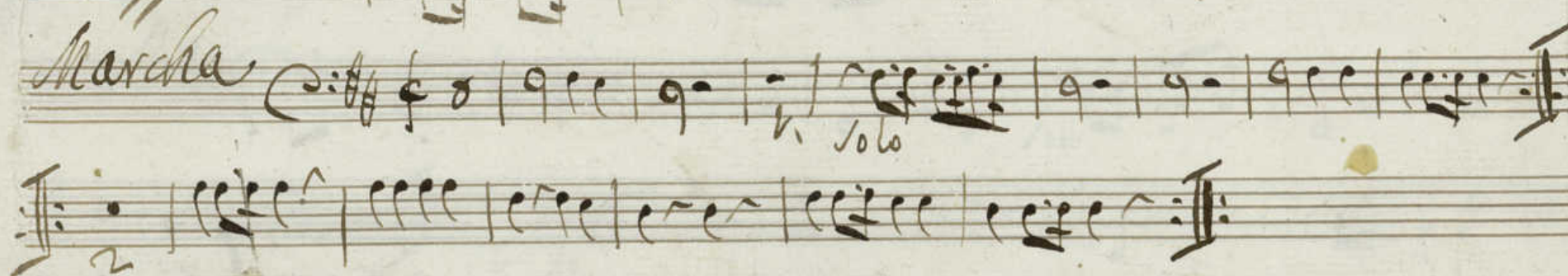
Marcha

4m. D.

2/4



Marcha



Marche

And,



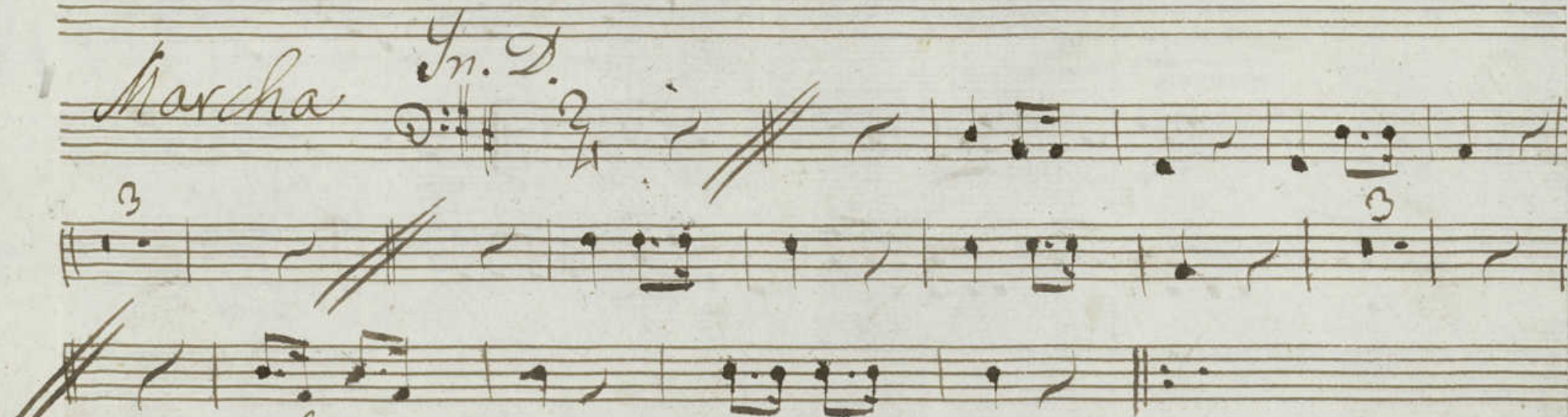
Trompa Segunda. +

En la Vella Esposa;

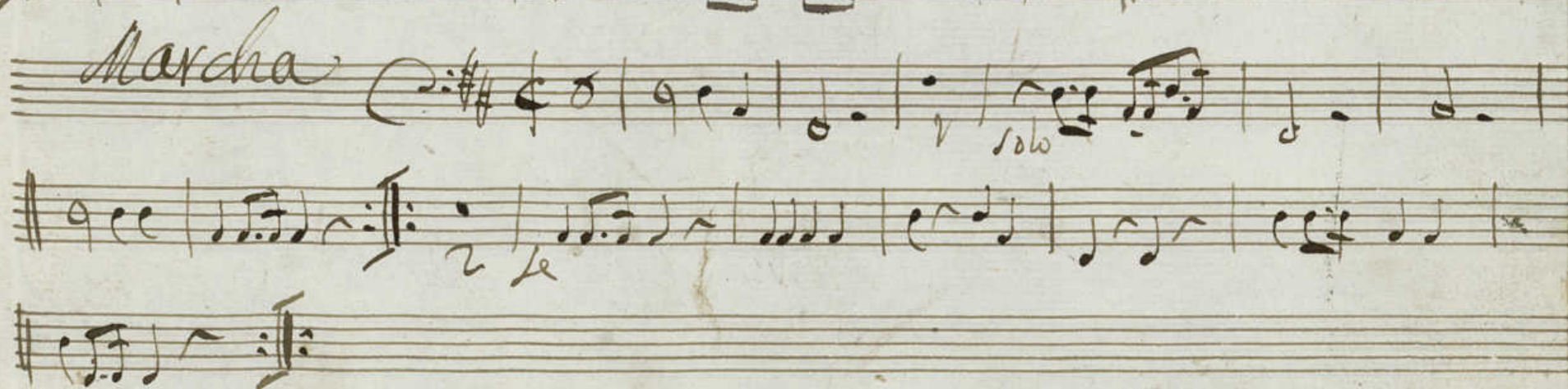
Marcha

In. D.

2/4

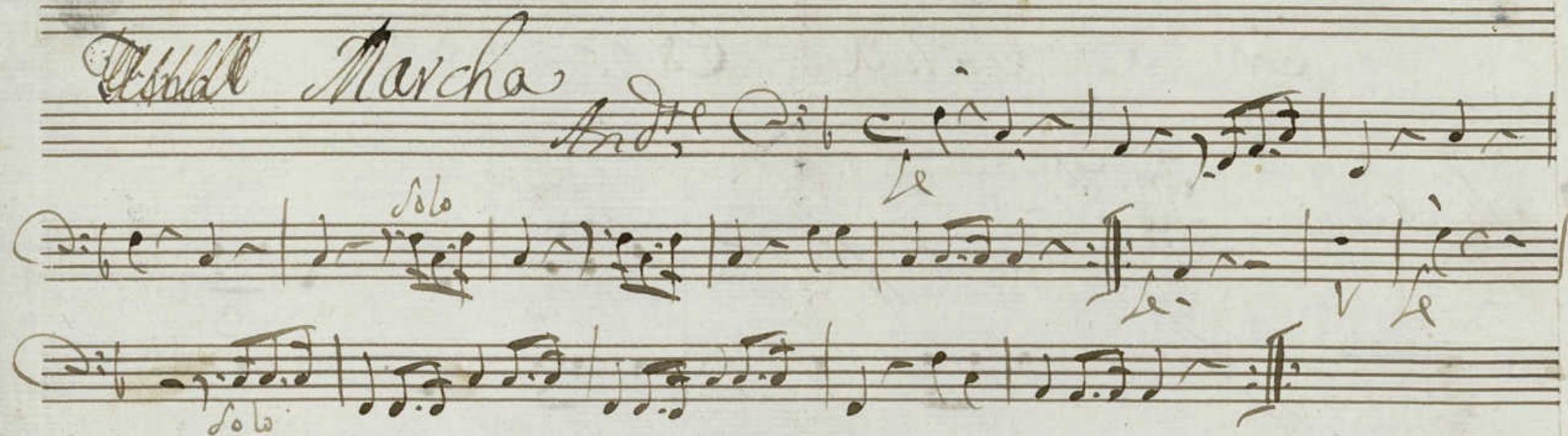


Marcha



Old March

Andte

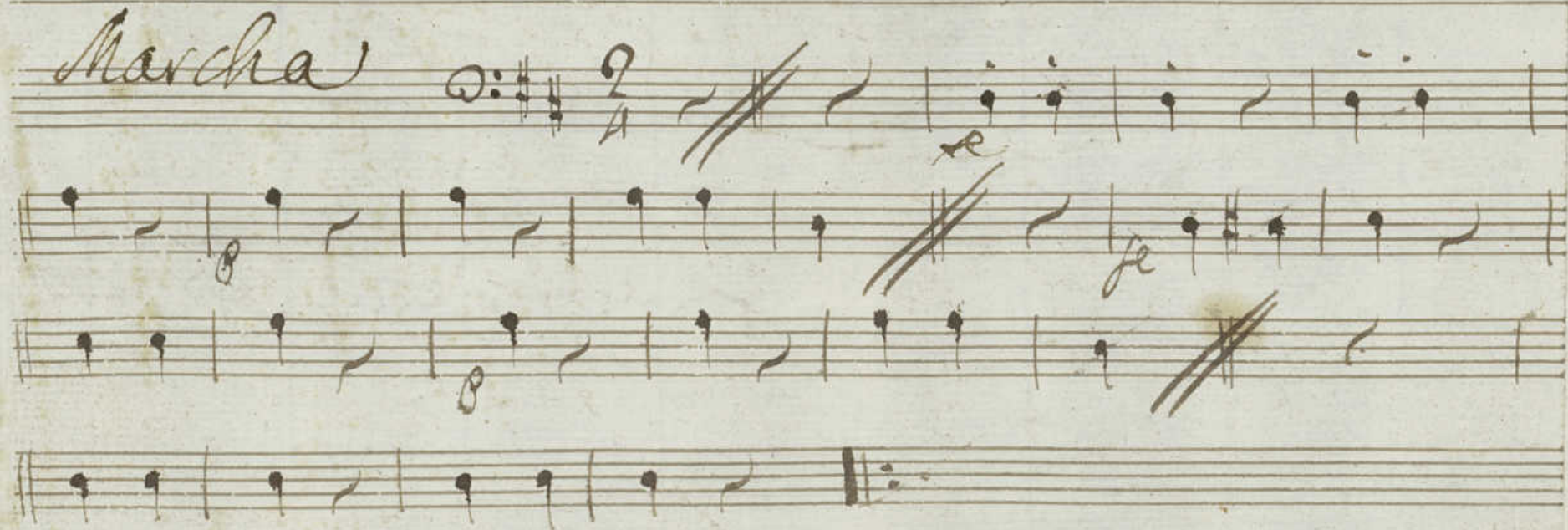


Contrabajo;

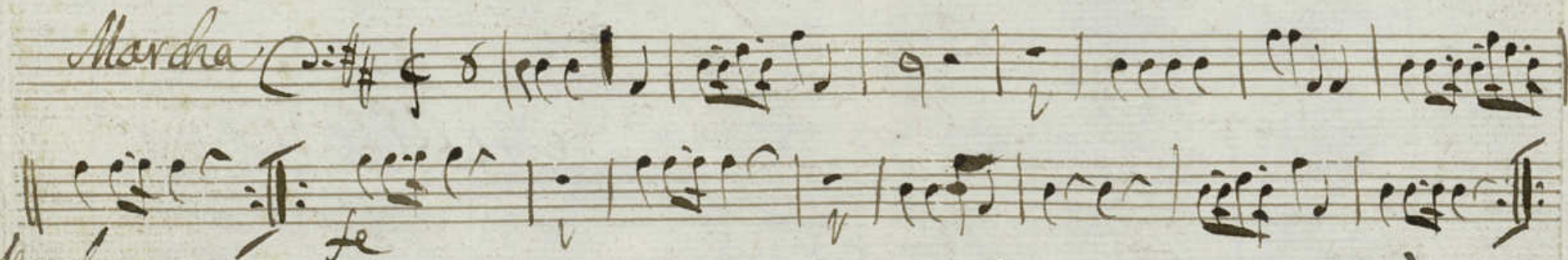
+

En la Bella Esposa;

Marcha



Marcha



Marcha



+

La Bella esposa

Marcha

Contrabajo:

En la Belta Espasa;

Marcha $\text{C}:\sharp\text{C} \frac{2}{4}$

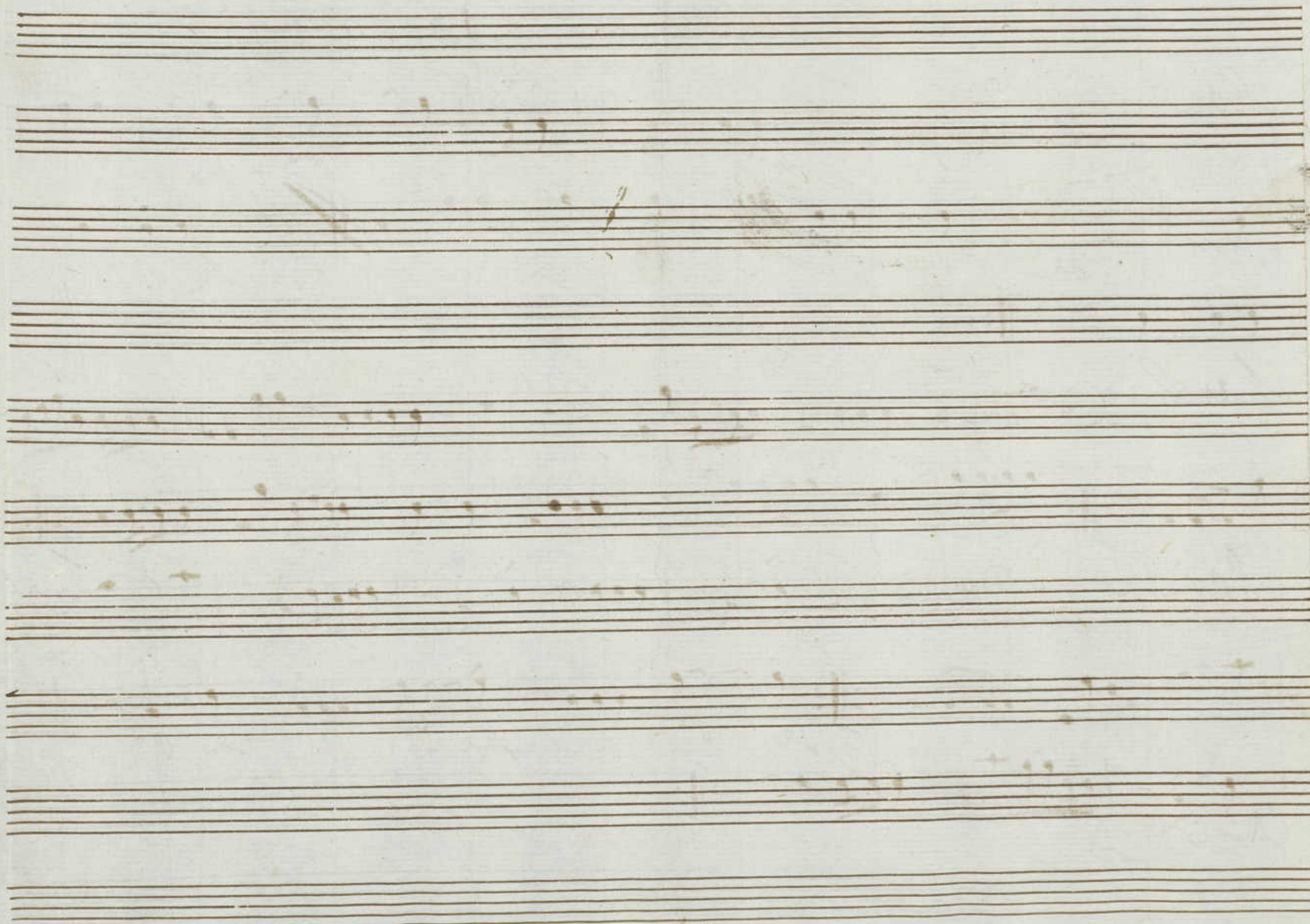
le p

Marcha $\text{C}:\sharp\text{C} \frac{2}{4}$

le p

Marcha And.^{te} $\text{C}:\sharp\text{C} \frac{2}{4}$

le p



Ayuntamiento de Madrid

Ayuntamiento de Madrid