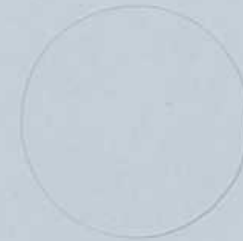


Mus 13-9

La cuarta parte de Marte
COMEDIA.



BIBLIOTECA HISTORICA MUNICIPAL



1200026162

Leg.º 12. Num.º 13.

139

Musica de la Comedia

en la 4.ª P.ª de Marta;

Jornada 1^a

Coro

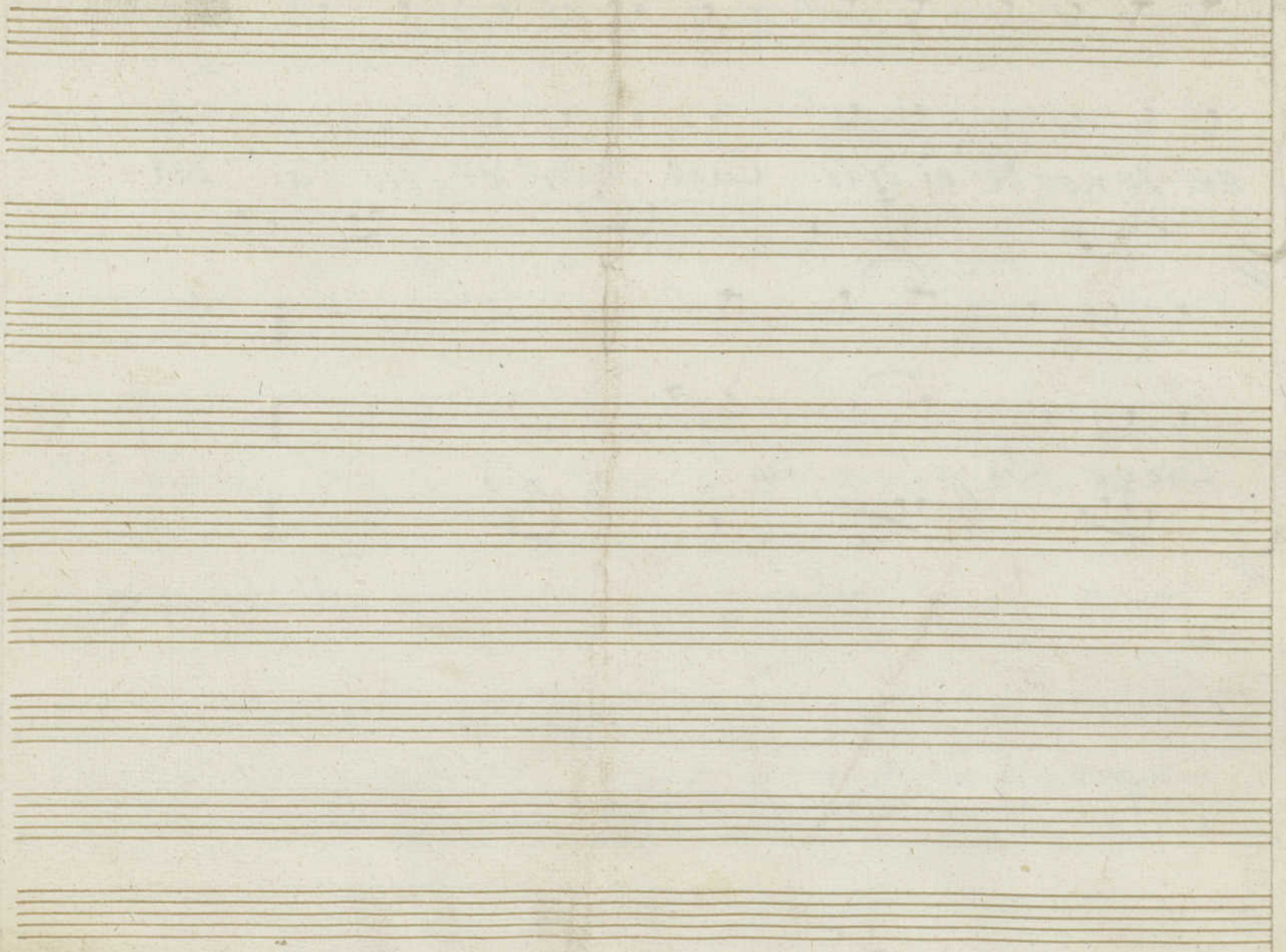
Allegro

Zelebremos Ninjas en Coros y trinos a la nueva
Venus quen candidos Vizos admi se la espuma

en senos de biberio Cual Madre dichosa del

Ciego Cupido

se repite al segno ✕



Violin Primero

en la Comedia; 1.^a P.^{te} de Marta;

Tornada 1.^a Coro

Allegro

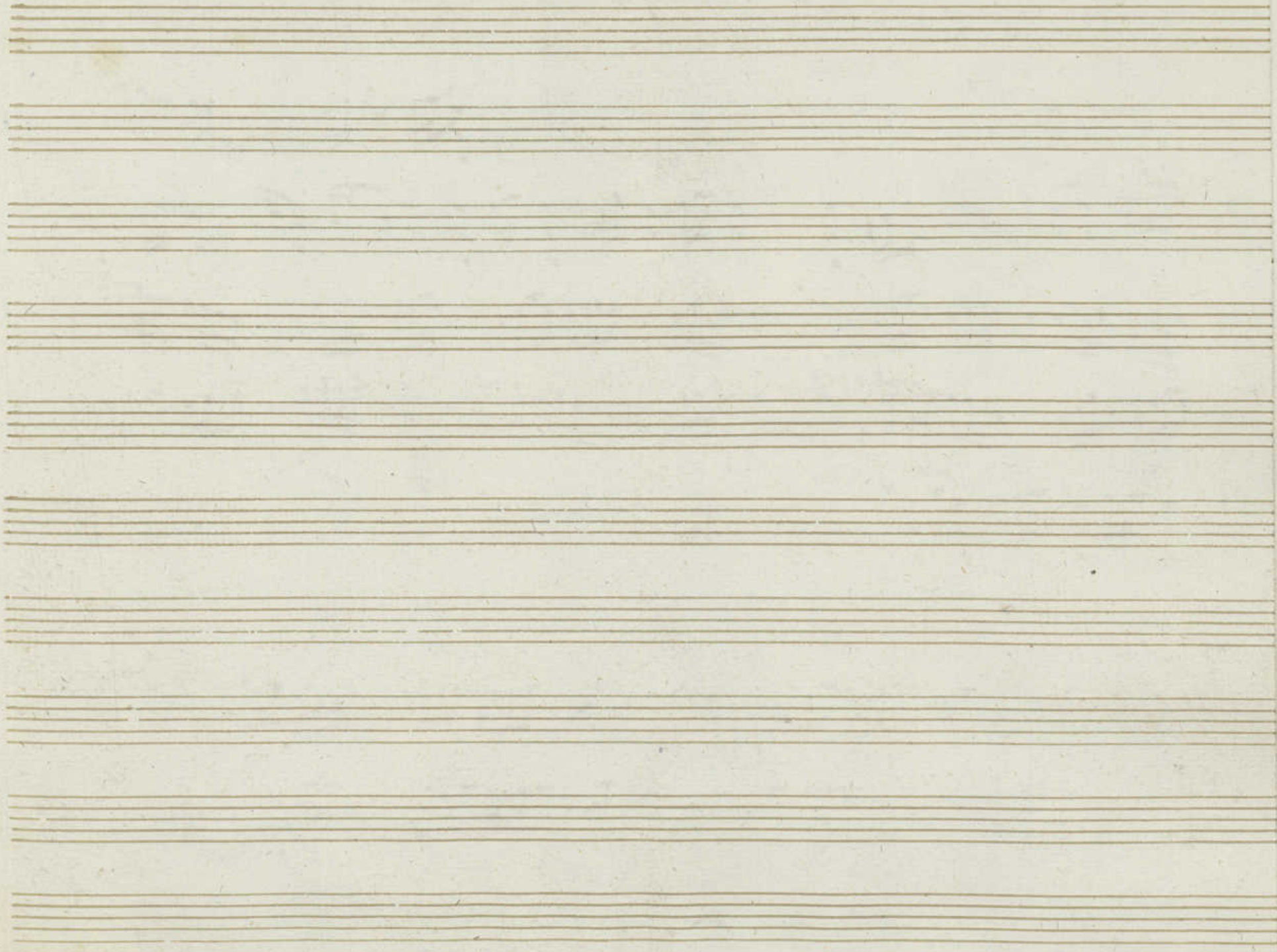
G# 2/4

Segue al segno ✕

Marcha

Tornada 2.^a La Contradanza;

Mus 13-9



Violin Primero

en la Comedia; 4.^a p.^{te} de Marta;

Tornada 1.^a

Coro

Allegro

$\text{G}\sharp\text{G}$ $\frac{2}{4}$

Repite al segno \sharp

Marcha

$\text{G}\sharp\text{G}$ $\frac{2}{4}$

Tornada 2.^a la Contradanza,



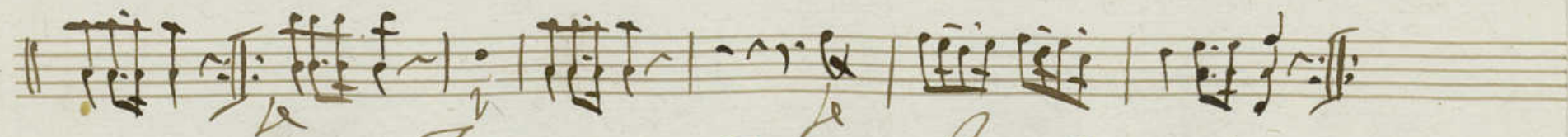
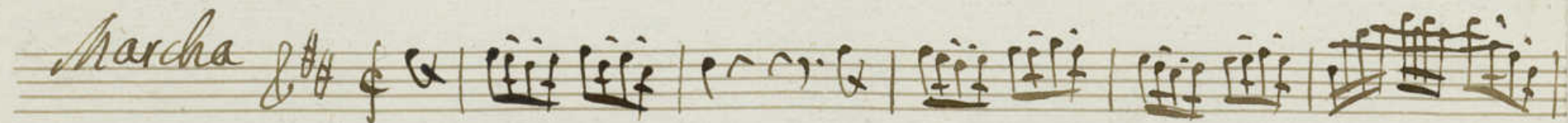
Violin segundo +
en la Comedia; 4.^a P.^{ta} de Marta;

Jornada 1.^a Coro

Allegro $\text{G}\sharp\text{F}\sharp$ $\frac{2}{4}$



Se repite al segno $\#$



Jornada 2.^a La Contradanza;

Violin Segundo +
en la Comedia; 4.^a P.^{te} de Marta;

Tornada 1.^a

Coro

Allegro

$\text{G}\#\#\frac{2}{4}$

Repente al segno

Marcha

$\text{G}\#\#\frac{2}{4}$

Tornada 2.^a la Contradanza

Jose Primero

En la Comedia; La 4.^a P.^{ta} de Marcha

Tornada 1.^a Coro

Allegro

$\text{G}\#\#\frac{2}{4}$

Se Repite al Segno

Marcha

$\text{G}\#\#\frac{2}{4}$

Tornada 2.^a La Contradanza

Oboe Segundo

En la Comedia: La 4.^a P.^{ta} de María;

Tornada 1.^a Coro Allegro & # 2/4

Handwritten musical notation for the first section of the score. It consists of four staves. The first staff begins with a treble clef, a key signature of one sharp (F#), and a 2/4 time signature. The music is written in a cursive style with many beamed notes. A 'Voz' marking is present above the second staff. The section concludes with a double bar line and the instruction 'Se repite al segno'.

Handwritten musical notation for the second section of the score. It consists of two staves. The first staff begins with a treble clef, a key signature of one sharp (F#), and a 2/4 time signature. The music is written in a cursive style with many beamed notes. A 'Solo' marking is present below the second staff. The section concludes with a double bar line.

Tornada 2.^a La Contradanza

Mus 13-9

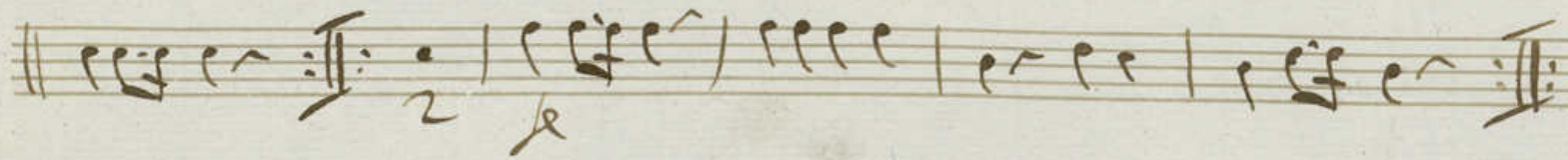
Trompa Primera +
en la Comedia; La 4.^a p.^{te} de Marta

Tornada 1.^a Coro
All.^o C:## 2/4



13-9

Marcha C:## 2/4



Tornada 2.^a la Contradanza

Trompa segunda

en la Comedia; la 4^a P.^{te} de Marta;

Jornada 1.^a Coro

Allegro

$\text{C}:\sharp\sharp \frac{2}{4}$



delepiase al segno

Marcha



Jornada 2.^a la Contradanza;

Contrabajo

En la Comedia: La 4.^a p.^{te} de Marta;

Jornada 1.^a Coro: *Allegro* C: # 2/4

The first part of the score consists of five staves. The top staff is a vocal line with a 'Voz' marking above it. The second staff is a crossed-out instrumental part. The third, fourth, and fifth staves are instrumental parts for the double bass. The music is in C major (one sharp) and 2/4 time. The first measure of the vocal line is marked with a 'Voz' and a 'V' above it. The instrumental parts feature rhythmic patterns of eighth and sixteenth notes.

Se Vepi de al degno

Marcha

The March section consists of two staves of handwritten musical notation. It is in C major (one sharp) and 2/4 time. The notation includes various rhythmic figures and rests, typical of a march.

Jornada 2.^a La Contradanza

Mus 13-9

Contra Basso; Dupli^{do} +

En la Comedia; 4.^a P.^{te} de Marta;

Tornada 1.^a Coro

Allegro C:## 2/4

va

Se Repite al segno #

Marcha

Tornada 2.^a La Contradanza

