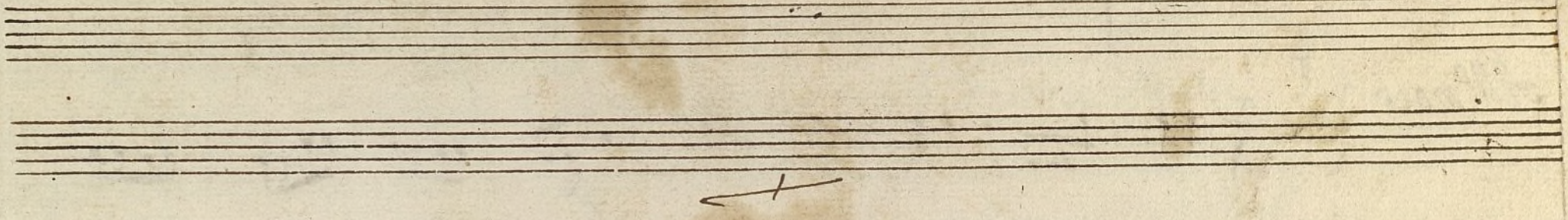



167-22



Conadilla a Solo;

de la Titana

167-22



Del S.^{ro} Rorales

S.^{ra} Maria Antonia

Handwritten musical score on aged paper, featuring multiple staves with notes, rests, and lyrics. The tempo marking "All.^o poco" is visible at the top left. The score includes various musical notations such as clefs, time signatures (2/4, 3/4, 6/8), and dynamic markings like "p" (piano) and "sfz" (sforzando). The lyrics are written in Spanish and appear to be a hymn or song dedicated to the Virgin Mary.

All.^o poco

2/4

3/4

6/8

And.^{te}

Mos que se vos miot a ren cion prestad a

la Maria Antonia q' os viene agradar a la

p

sfr.

p

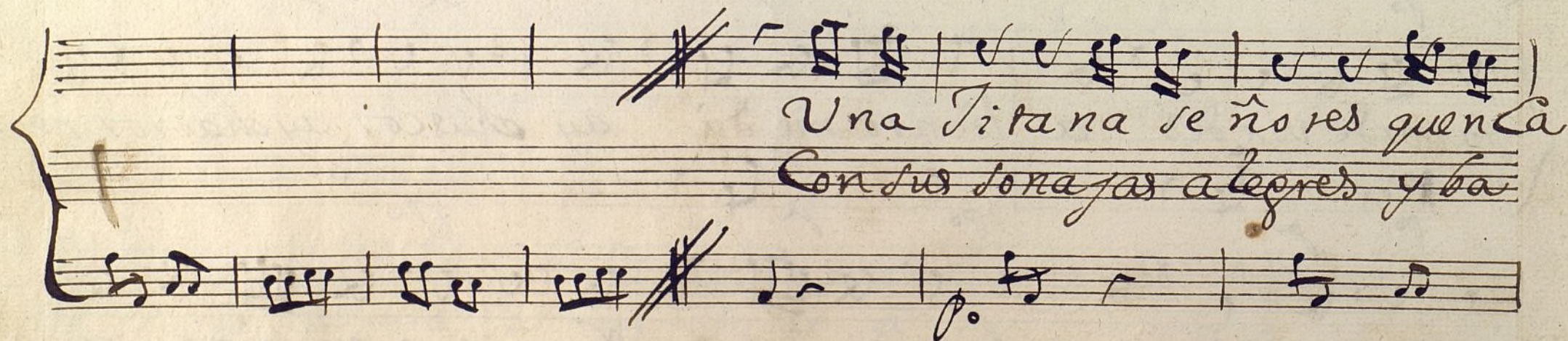
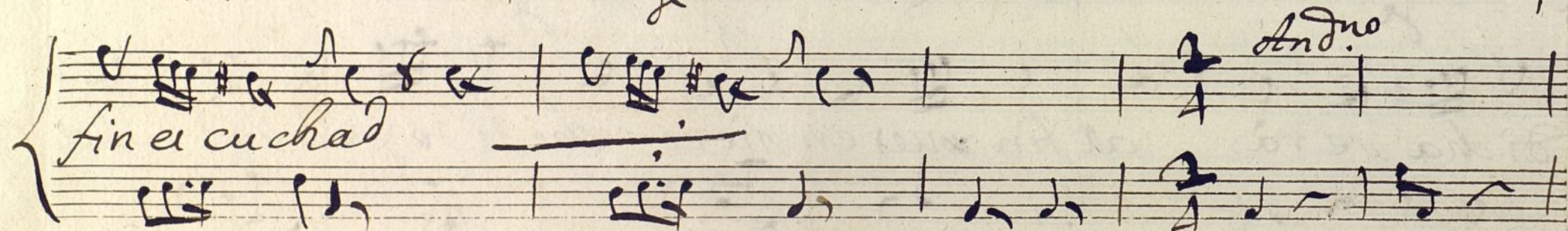
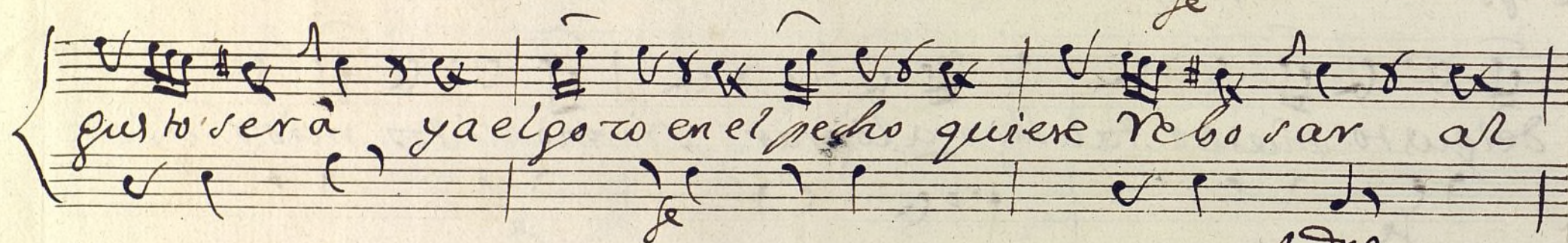
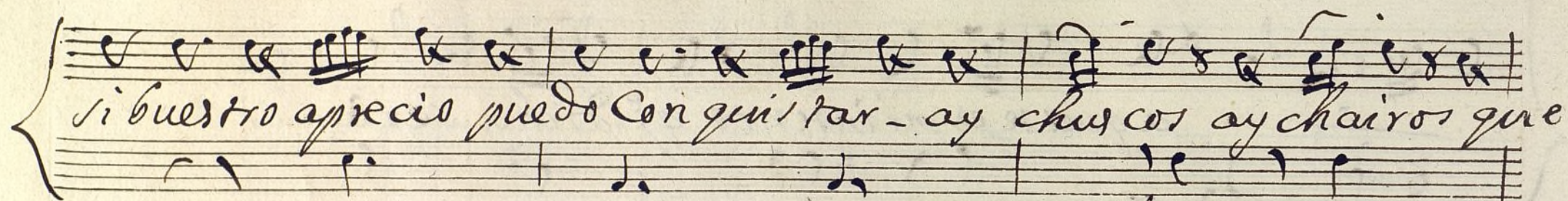
aquel se es mi intento q^e dicha será si

del gusto nuestro tal llega a lograr si monitos mios gran

dicha será al fin pues en piezo chitito y Callad quel

favor de usk des a liento me da ay chuscos ay chaitos nos

es to verdad pues chito si silencio y epito quen piezo por



diz llegué a trazar
por todo el lugar

Cantaba una canci-
ymploRANDO el Pádro

ne la q.^a se le viere la sal-
cionio de la Santa Caridad

escu
al pun

chad la que ri di to s q.^a aora la voi a Cantar oigan miren tengan
to que algo la da ban se po nia luego a Cantar oigan

Cuenta que Creso le gustará

allegro

Coplas And.^{te}

*quien qui
quando*

siere en este mundo buena vi'dita pa sar —
se sin tiere enfermo al Doctor no a de llamar —

— Coma siempre a Costa agena y en Tama Tome pe
— porque suele ser su Cura peor q^a la Enferme

sar — ay taule taule taullillo ay tan
dad — ay d.

le tau le tau la de jar q.^o se pudran quebo y que a ka pu
 le tau le tau la q.^o son del genero humano la Euadana

re un Cor tal —
 mas fa tal —

(y quando te viere triste que a
 ponga a ti a cantar)
 Procure comer en forma y con
 alegria cantar)

Parola

3 *Allegro*
8

Penar y pe sa dum — bres Vayan real
 Mejor que las san gri — as y las ve

3 *4*
All.^o

5

Vo llo — (e) quen muriendose u — no
zetas — (e) es el Caldo manche — go

sea cabo so do — ay — guacha ri sa que
y dos chu le tas — ay — guacha ri sa que

guachara estas q' — tupa charo te es guacha

(Vai la)

Alleg^{ro}

ra (a la je a la je a la ja a la ja) y y

Si Con es re me dio no sea li'via re no sea li'via
 sino se pu rre re Con esto bueno Con esto bue

re no sea li'via re Vaya a Com prar un pe rro
 no Con esto bueno pro cure tener gra to al

y Con el vai le Vaya à Comprar un perro y Con el vai le
se pul tu re ro pro cure tener prato al sepul tu re ro

la y al fin y al cabo si Re me dio no tiene
por que ello al cabo en es tirar la pata

llamea ca cha no si Re me dio no tiene llamea ca cha
to dos pa ra mos en es tirar la pata to dos pa ra

no;
mos;

Allegro

D.C. ala Coplas

Allegro

Y esto se ñore a quia ca bõ perdon les

pido sino pus to segui di lli'tas guapa vo nitas

y re chu qui'ta a empezar boy

a tencion a tencion;

Segui. Es el amor un

Afectuoso

De donde en g.ⁿ con templo es el amor un donde en g.ⁿ con templo

en g.ⁿ con templo

la na yo tra de ferro yo tra de ferro

Duende que da mil charcos que da mil charcos

Je po credo Je Je po Je po

Una mano de lana de lana yo trade ferro
y cuenta con el duende el duende queda mil chascos

ah! quantas veces con un enredo pega unos sustos
que causan miedo; mas no a sustar se fuera de te los

g^o Como el duende es men' travieso el mui travieso

mas quando pega el golpe ir con gran fierro ries la

mano de la na de lana, o la de Ferro

o la de Ferro
ya por mis Cielos

allegro

Violin Primo

+

Mus 167-22

Conadilla à solo, de la Titania.

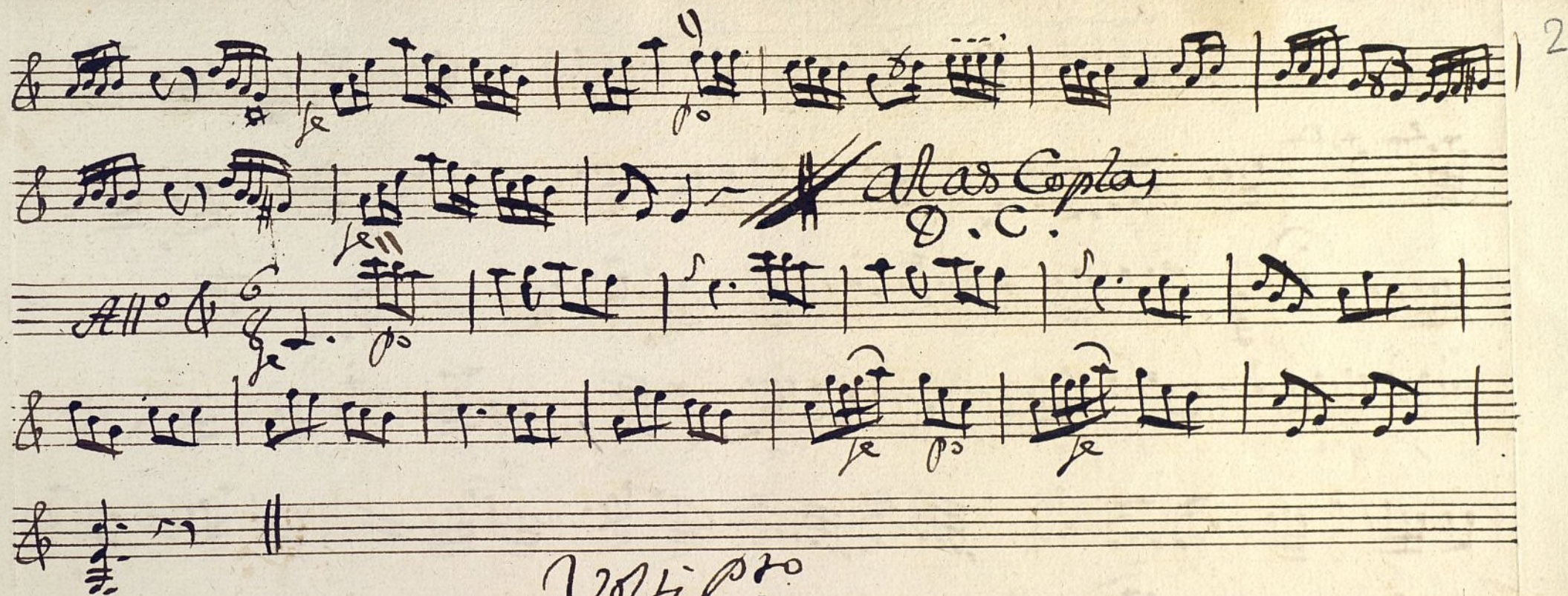
Handwritten musical score for Violin Primo, titled "Conadilla à solo, de la Titania." The score is written on ten staves. The tempo is marked "Al. poco" and the time signature is 2/4. The key signature has one sharp (F#). The score includes various musical notations, including notes, rests, and dynamic markings such as *po*, *se*, *Andr.*, *For.*, *2. vez*, and *Volte*. There is a large, dark, irregular mark on the seventh staff, possibly a correction or a stain. The score concludes with a double bar line and a final note.

Handwritten musical score on ten staves. The notation includes various musical symbols such as clefs, time signatures, notes, rests, and dynamic markings. The score is written in a historical style, likely from the 18th or 19th century.

Key markings and annotations include:

- vo* (voice) at the top left.
- Je* (Jeux) and *po* (piano) markings throughout the first three staves.
- Je sordina* (Jeux sordina) on the fourth staff.
- Coplas And.* (Coplas Andante) on the fourth staff.
- Je* and *po* markings on the fifth and sixth staves.
- Je* and *po* markings on the seventh staff.
- Je* and *po* markings on the eighth staff.
- Je* and *po* markings on the ninth staff.
- Je* and *po* markings on the tenth staff.
- Je* and *po* markings on the eleventh staff.
- Je* and *po* markings on the twelfth staff.
- Je* and *po* markings on the thirteenth staff.
- Je* and *po* markings on the fourteenth staff.
- Je* and *po* markings on the fifteenth staff.
- Je* and *po* markings on the sixteenth staff.
- Je* and *po* markings on the seventeenth staff.
- Je* and *po* markings on the eighteenth staff.
- Je* and *po* markings on the nineteenth staff.
- Je* and *po* markings on the twentieth staff.
- Je* and *po* markings on the twenty-first staff.
- Je* and *po* markings on the twenty-second staff.
- Je* and *po* markings on the twenty-third staff.
- Je* and *po* markings on the twenty-fourth staff.
- Je* and *po* markings on the twenty-fifth staff.
- Je* and *po* markings on the twenty-sixth staff.
- Je* and *po* markings on the twenty-seventh staff.
- Je* and *po* markings on the twenty-eighth staff.
- Je* and *po* markings on the twenty-ninth staff.
- Je* and *po* markings on the thirtieth staff.
- Je* and *po* markings on the thirty-first staff.
- Je* and *po* markings on the thirty-second staff.
- Je* and *po* markings on the thirty-third staff.
- Je* and *po* markings on the thirty-fourth staff.
- Je* and *po* markings on the thirty-fifth staff.
- Je* and *po* markings on the thirty-sixth staff.
- Je* and *po* markings on the thirty-seventh staff.
- Je* and *po* markings on the thirty-eighth staff.
- Je* and *po* markings on the thirty-ninth staff.
- Je* and *po* markings on the fortieth staff.
- Je* and *po* markings on the forty-first staff.
- Je* and *po* markings on the forty-second staff.
- Je* and *po* markings on the forty-third staff.
- Je* and *po* markings on the forty-fourth staff.
- Je* and *po* markings on the forty-fifth staff.
- Je* and *po* markings on the forty-sixth staff.
- Je* and *po* markings on the forty-seventh staff.
- Je* and *po* markings on the forty-eighth staff.
- Je* and *po* markings on the forty-ninth staff.
- Je* and *po* markings on the fiftieth staff.

Handwritten musical score on five staves. The notation includes various musical symbols such as clefs, notes, rests, and dynamic markings. The second staff contains the handwritten text "Alas Coplas" and "D.C.". The fifth staff begins with the word "Volupto".



Alas Coplas
D.C.

Volupto

Violin Segundo

Mus 167-22

bonadilla à solo; de la Titana.

Handwritten musical score for Violin Segundo, titled "bonadilla à solo; de la Titana." The score is written on ten staves, featuring various musical notations including notes, rests, and dynamic markings such as *All. poco*, *p*, *Andrè*, *for.*, *volti*, and *Ma andrè*. The notation includes treble clefs, key signatures with one sharp (F#), and time signatures of 2/4 and 3/4. The score is signed "Ma andrè" at the bottom left.

Handwritten musical score on ten staves. The notation includes various musical symbols such as clefs, notes, rests, and dynamic markings.

Key markings and text include:

- voz* (voice) above the first staff.
- allegro* marking on the fourth staff.
- Sordina* (Sordina) marking above the fifth staff.
- Coplas Andre* (Coplas Andre) written across the fifth and sixth staves.
- sinella* (sinella) and *Allo* markings above the seventh staff.
- Parola* (Parola) written below the seventh staff.

The score concludes with a final measure on the tenth staff, marked with a fermata and a dynamic marking.

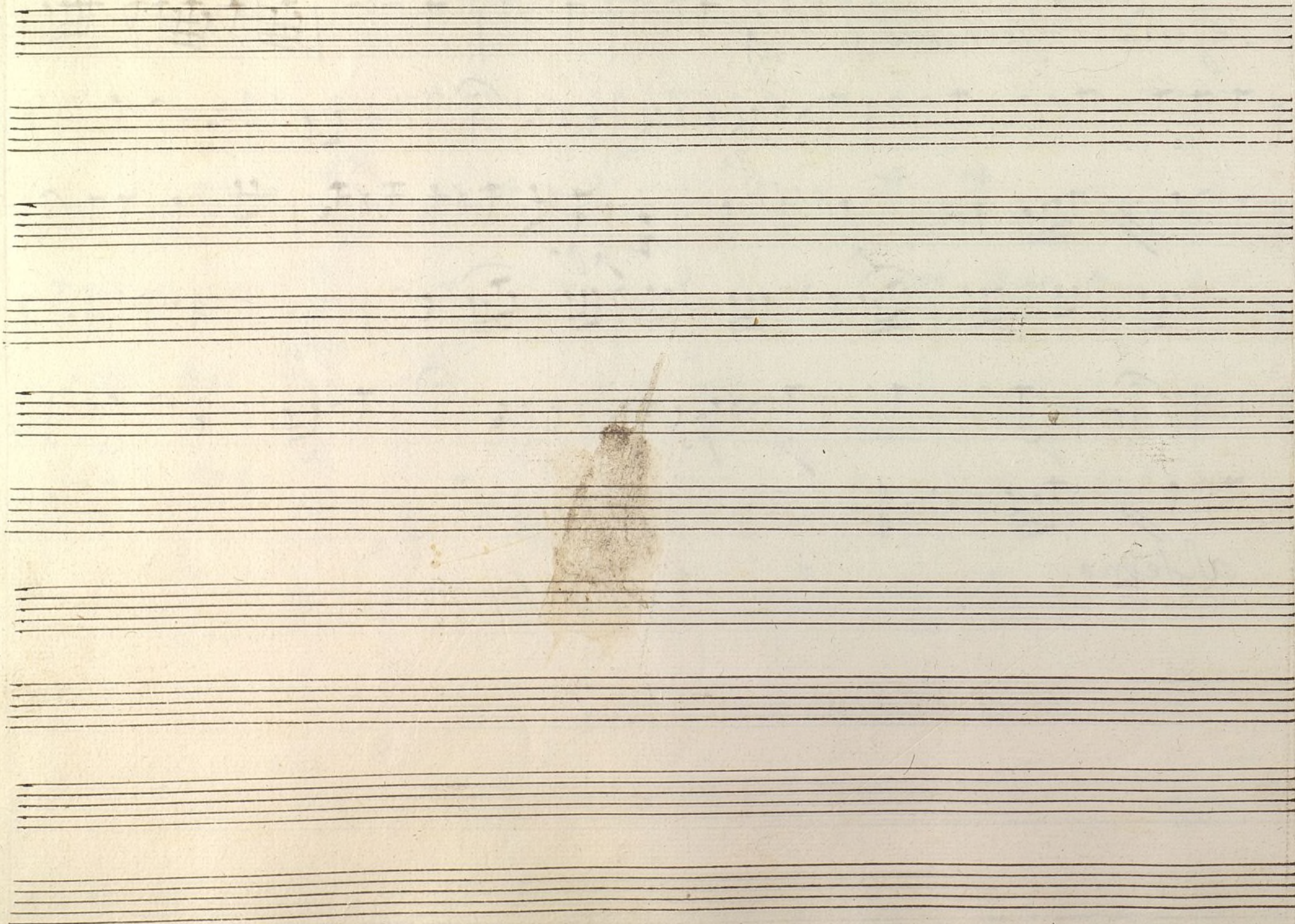
Alleg^{ro}

|| O. C. alas Coplas

Volupto

5
Sequi. Affectuoso

allegro



Alta segunda

+

Mus 167-22

1

tona dilla à solo; della Tritana :.

Handwritten musical score for a single melodic line. The notation is in treble clef with a 2/4 time signature. The score consists of ten staves of music. The first staff is marked *All. poco*. The second staff has a *se* marking. The third staff has an *Andr.* marking. The fourth staff has a *va* marking. The fifth staff has a *se* marking. The sixth staff has a *se* marking. The seventh staff has a *se* marking. The eighth staff has a *se* marking. The ninth staff has a *se* marking. The tenth staff has a *se* marking. The score ends with the word *allegro* and a double bar line, followed by the word *volte*.

Coplas And.^{te}

Parola

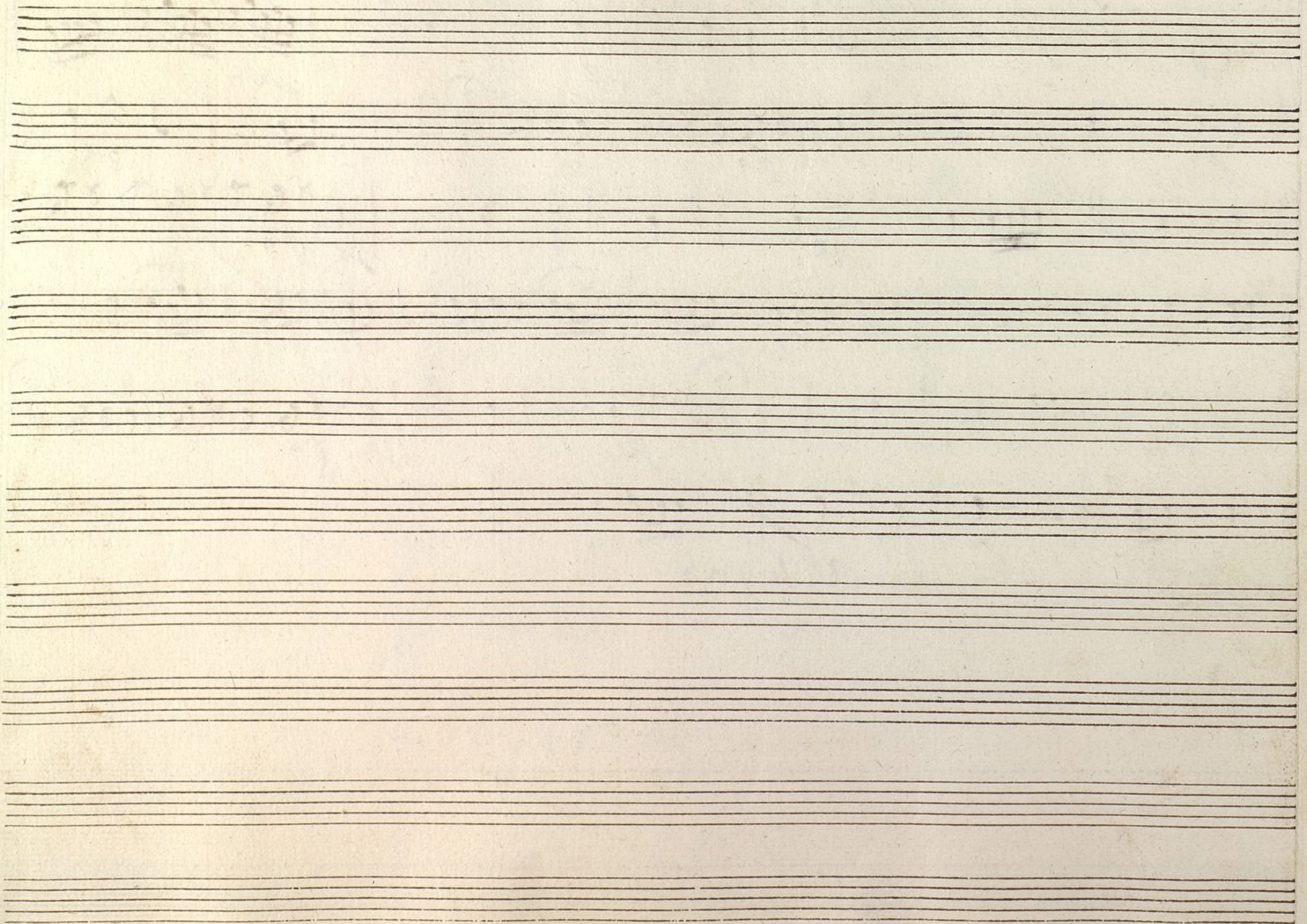
All.^o

D. C. alas Coplas

All.^o pace

Segu. Afectuoso $\text{G} \# \# \frac{3}{4}$

Allegro



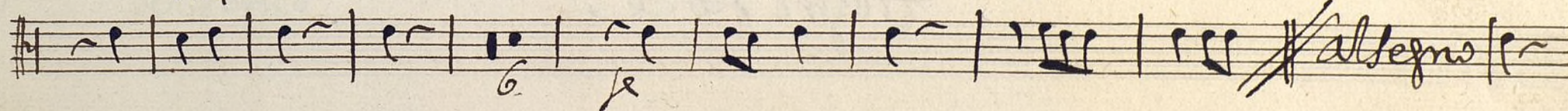
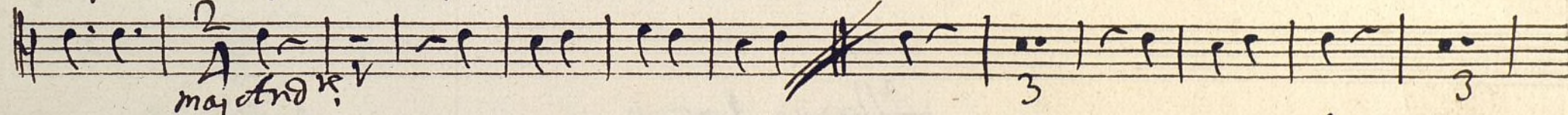
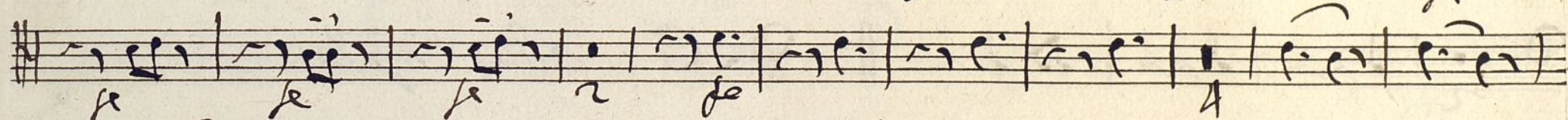
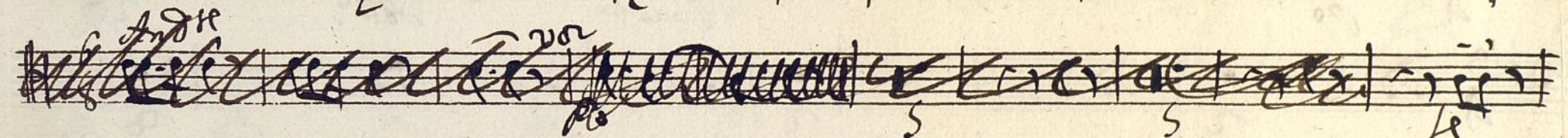
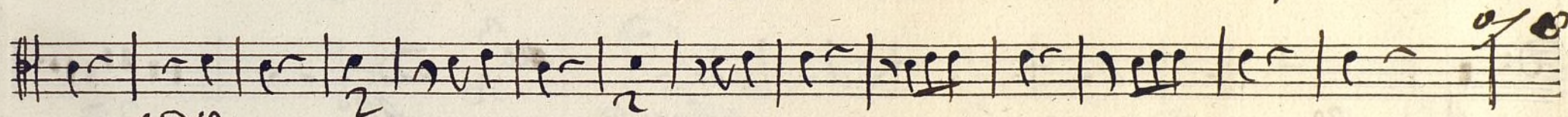
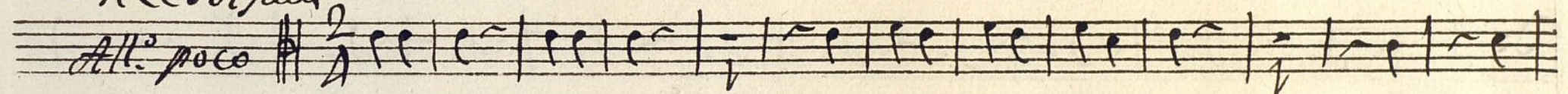
Trompa Primera

Mus 167-22

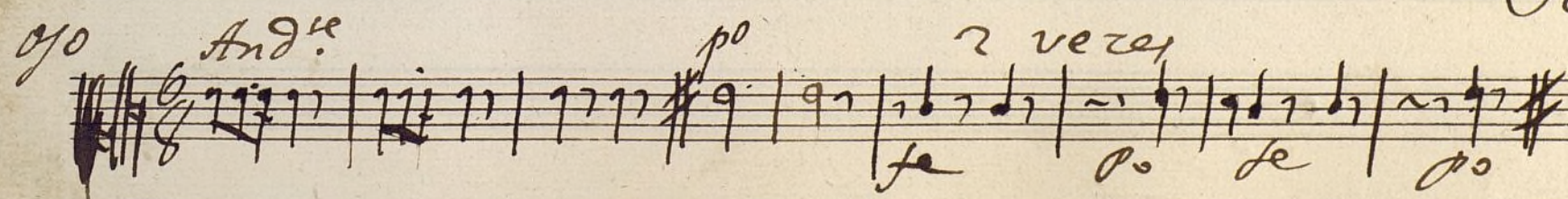
sonadilla à solo; de la Tirana.

In C esolfaur

All.^o poco



Volte



Coplas And.^{te} 6/8 p^o

p^o

Parola

All.^o 27

$\text{G. C. a las Coplas}$

Allegro tarce

In Dela

Segu. Afectuoso

2

Handwritten musical score on six staves. The notation includes various musical symbols such as notes, rests, and dynamic markings like *po* and *se*. The piece concludes with the word *allegro* written below the final staff.

trompa segunda

+

Nun 167-22

tonadilla à solo; de la Tirana.

In Césolant

All.^o poco

Volh p^{ro}

2 veces

Ayuntamiento de Madrid

Coplas And.^{te} 6/8 ^{Do}

Do

Parolas 8 All.^o 27

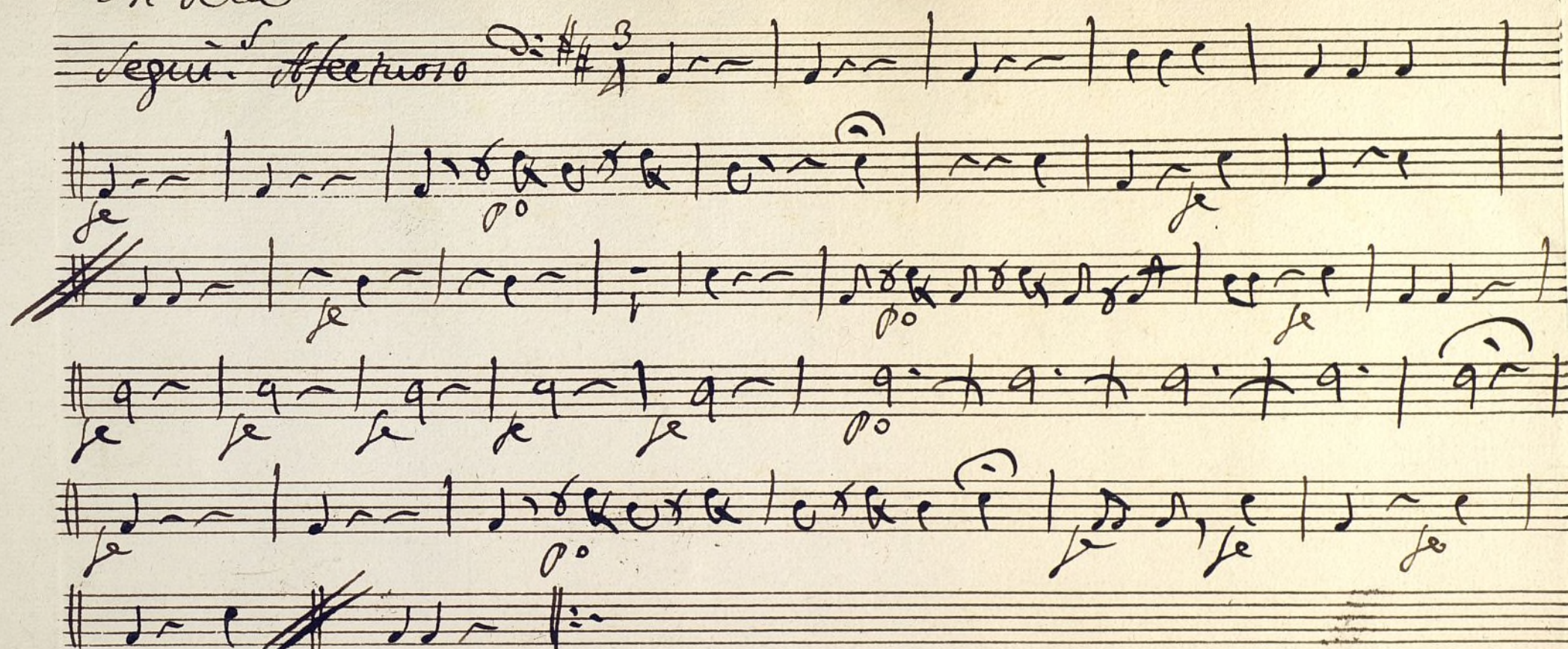
D. C. alas Coplas.

Allegro forte

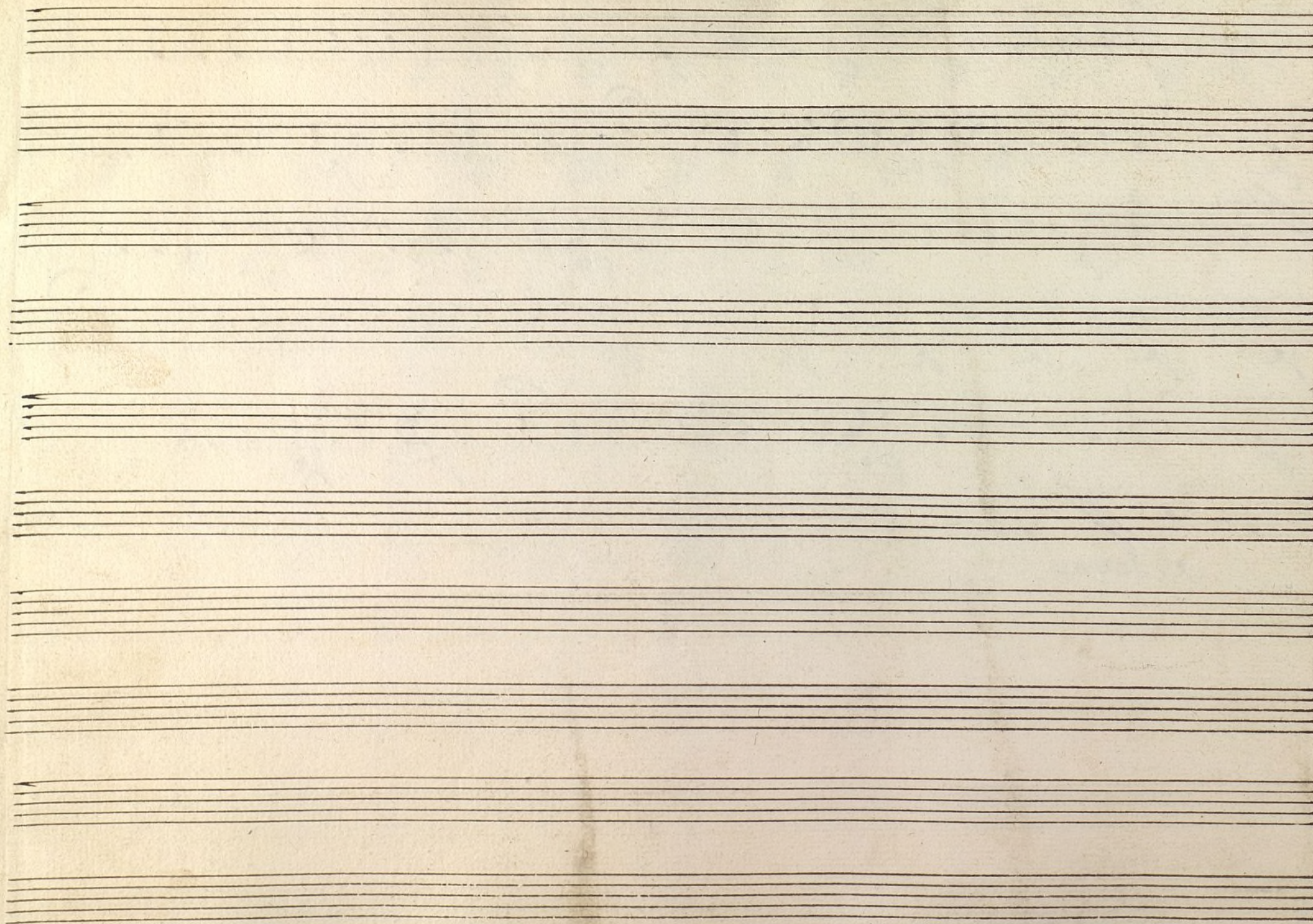
In Delas

Segu. ^f Afectuoso

$\text{D}^{\flat} \text{E}^{\sharp} \text{F}^{\sharp}$ 3/4



allegro



Contravazo;

tonadilla à solo; de la Titana %.

mus 167-22

Handwritten musical score for "L'Espresso" by Franz Schubert. The score consists of ten staves of music, primarily in treble clef with a key signature of one sharp (F#). The tempo is marked "Allegro" at the beginning. Dynamics include "poco", "And.", "2ma Andte", and "allegro". The piece concludes with a double bar line and the word "Volte".

[illegible]

allegro