

BIBLIOTECA HISTORICA MUNICIPAL



1200062927

Ms 719-23(6)



Seis Contrad. Ing.

MU 219-23 (6) 25

*f*

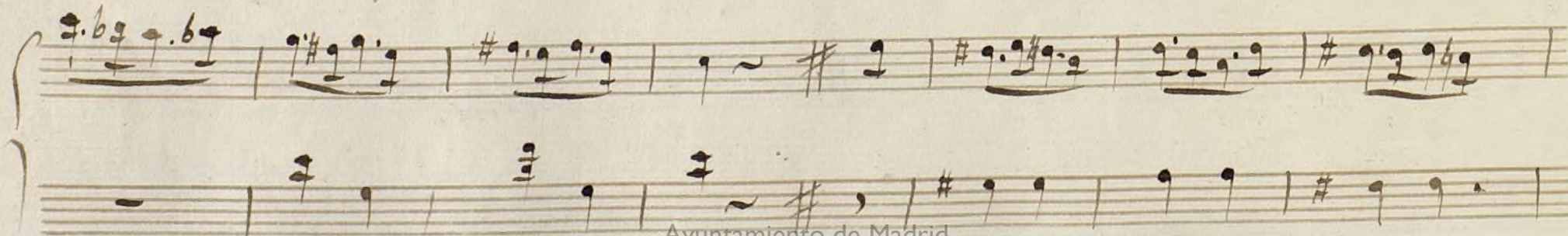
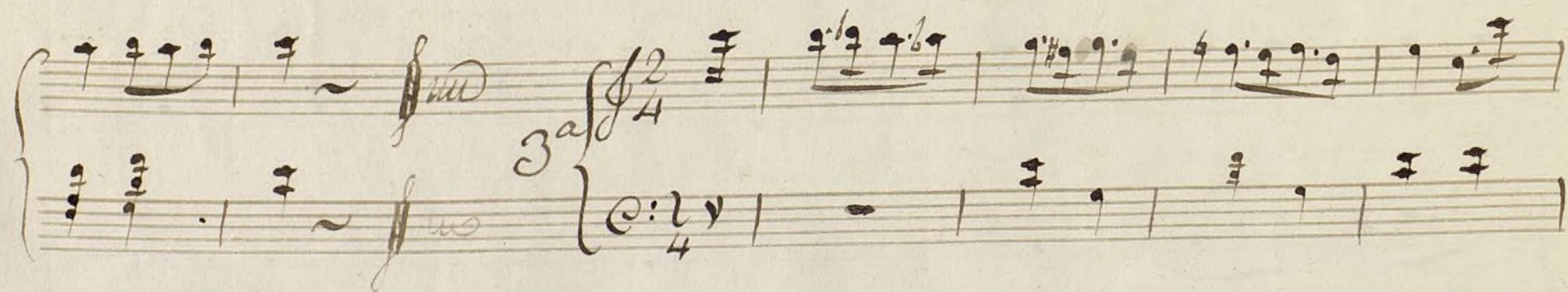
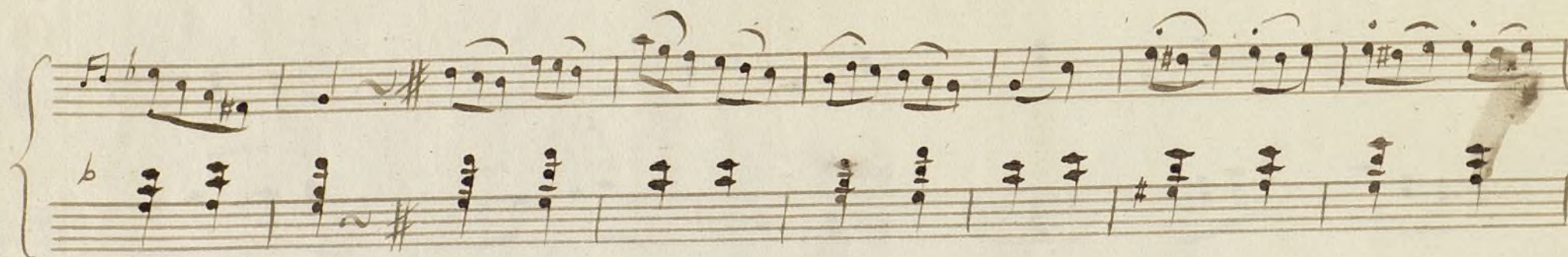
Handwritten musical score for 'Seis Contrad. Ing.' on aged paper. The score is written on ten staves. The first staff is a single line with a treble clef and a 6/4 time signature. The second staff is a single line with a treble clef. The third and fourth staves are a grand staff (treble and bass clefs). The fifth and sixth staves are a grand staff. The seventh and eighth staves are a grand staff. The ninth and tenth staves are a grand staff. The music is written in brown ink and includes various musical notations such as notes, rests, and accidentals. The score concludes with a double bar line and a repeat sign.

Ayuntamiento de Madrid

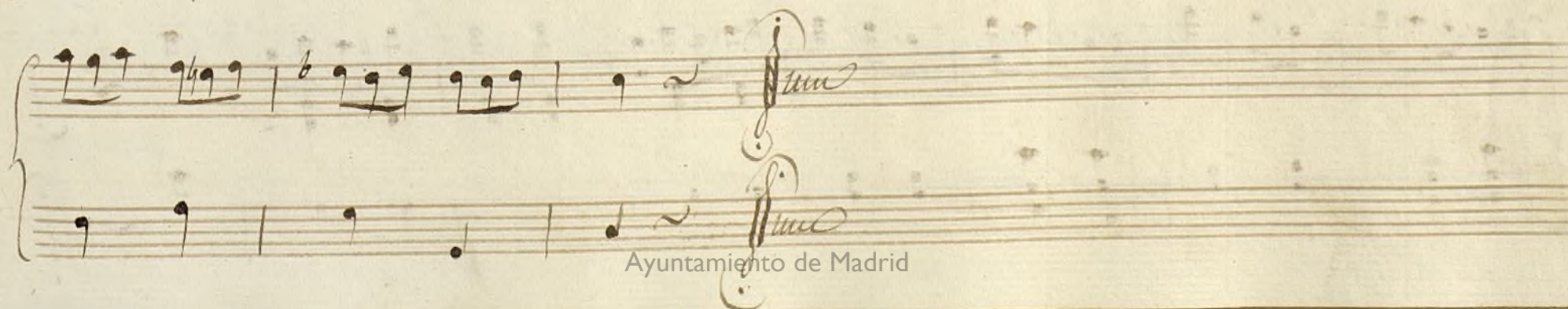
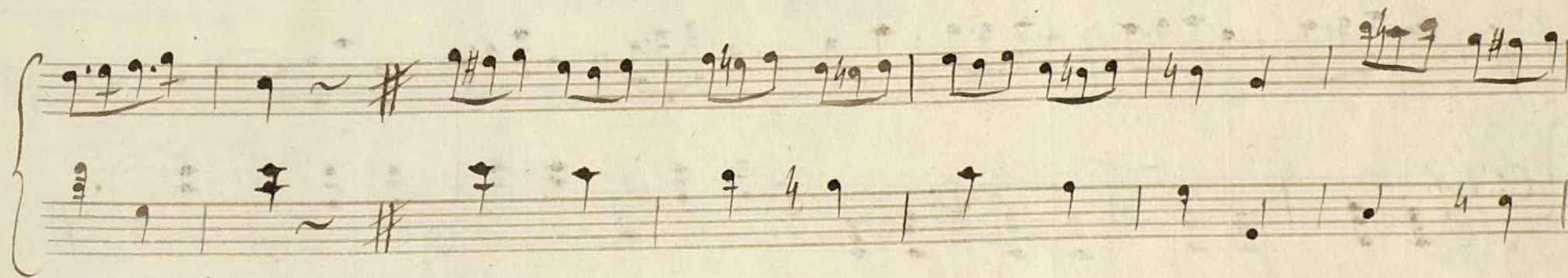
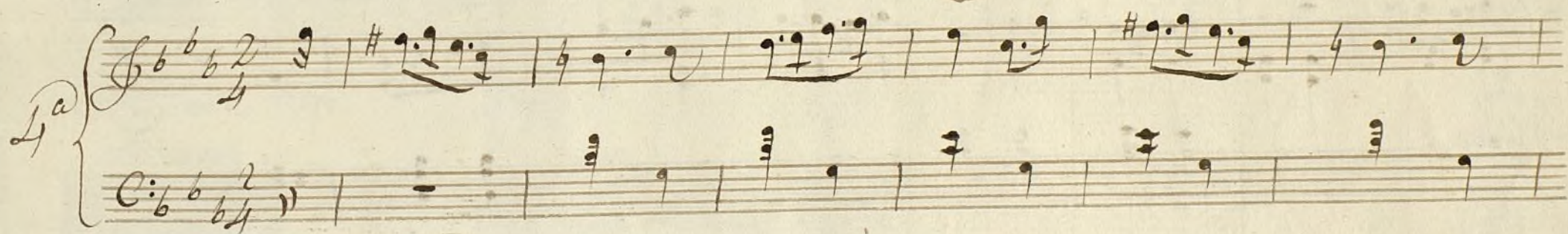
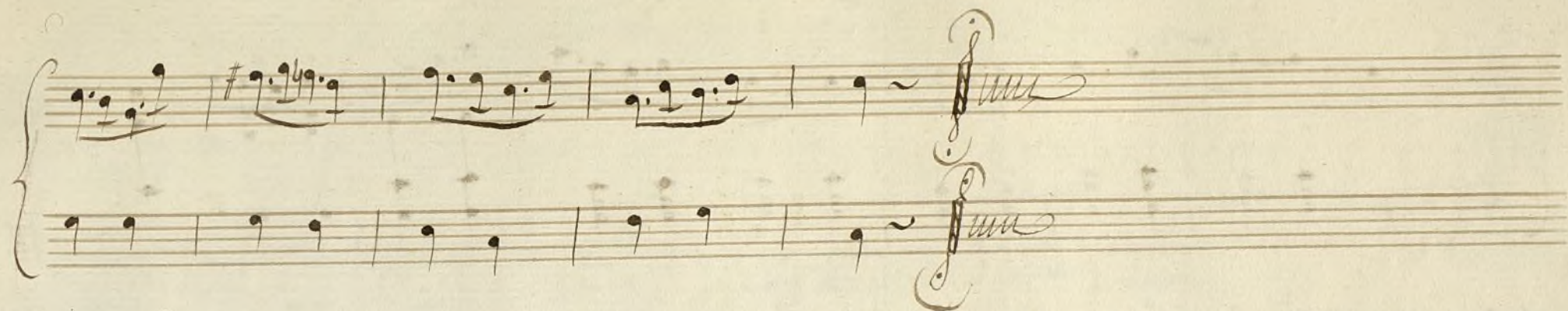
1200062927



2<sup>a</sup>









5a

Handwritten musical score system 1. It consists of two staves. The top staff is in treble clef with a 6/4 time signature. The bottom staff is in bass clef with a 6/4 time signature. Both staves end with a double bar line and a sharp sign (#).

Handwritten musical score system 2. It consists of two staves. The top staff is in treble clef with a key signature of one sharp (F#) and a 2/4 time signature. The bottom staff is in bass clef with a key signature of one sharp (F#) and a 2/4 time signature. Both staves end with a double bar line and a sharp sign (#).

Handwritten musical score system 3. It consists of two staves. The top staff is in treble clef with a 2/4 time signature. The bottom staff is in bass clef with a 2/4 time signature. Both staves end with a double bar line and a sharp sign (#).

Handwritten musical score system 4. It consists of two staves. The top staff is in treble clef with a key signature of one sharp (F#) and a 2/4 time signature. The bottom staff is in bass clef with a key signature of one sharp (F#) and a 2/4 time signature. Both staves end with a double bar line and a sharp sign (#).