

Figuro en el polo o muelle de Teruel

El Alcaide en la aldea

Mus 71-13

Parte del Clave

en el Entremes

Los Vendimiadores %

2^a

Coro de Vendimadores

1^a Impieza

Allegretto

2. Vozes

Viva viva viva

laa le - gri a laa le -

Viva viva viva la vendimia viva viva la ven

gaia se ga de xas lin das, a
 dimia chis to ras gra cio sas ben di mia do ri tas chis
 3#
 plau da al et mo ya do ña Be ni ta, y q^e
 to ras gra cio sas Ven di mia do ri tas a la
 Xi uan q^e Xi uan q^e Xi uan q^e Xi uan, y q^e Xi uan q^e
 vi ña a la vi ña a la vi ña a la vi - ña a la vi ña a la

22
Nose Cantam^{os} Dios q^{ue} hasta aqui

Si uan q^{ue} Si uan
Niña ala vi - ña',
pues a toño sus
Seré para po
frutos o freze Como agosto tri bu ta laes pipa
yel a fan yel sudor en tre sen gan e la

fan yel sudor en te tengan bai les Cuentos pla

Coro

zer, ya le gria; Uiva uiva uiva

viva viva viva la ven di mia gra.

3#

Handwritten musical score for three systems, each consisting of a vocal line and a guitar line. The lyrics are in Spanish and relate to grape harvesting.

System 1:

Vocal line: *ciotas chus qui tar vendimia do ritas chis to ras gra*

Guitar line: *ciotas chus qui tar vendimia do ritas chis to ras gra*

System 2:

Vocal line: *ciotas ven dimia do ritas ala viña ala*

Guitar line: *ciotas ven dimia do ritas ala viña ala*

System 3:

Vocal line: *viña ala viña ala vi - ña ala viña ala*

Guitar line: *viña ala viña ala vi - ña ala viña ala*

vñña ala vi - ña,

se repite ala senal #

siguen las seguir.^a de la Linterna.
que estan en la parte del Clabe

y luego la sonadilla a Duo.

Ayuntamiento de Madrid

~~66~~

Violin Primero

Del Enre mes

Los Vendimiadores

Coro Se empieza Con este

Alleg.^{ro}

$\text{G} \# \# \frac{6}{8}$

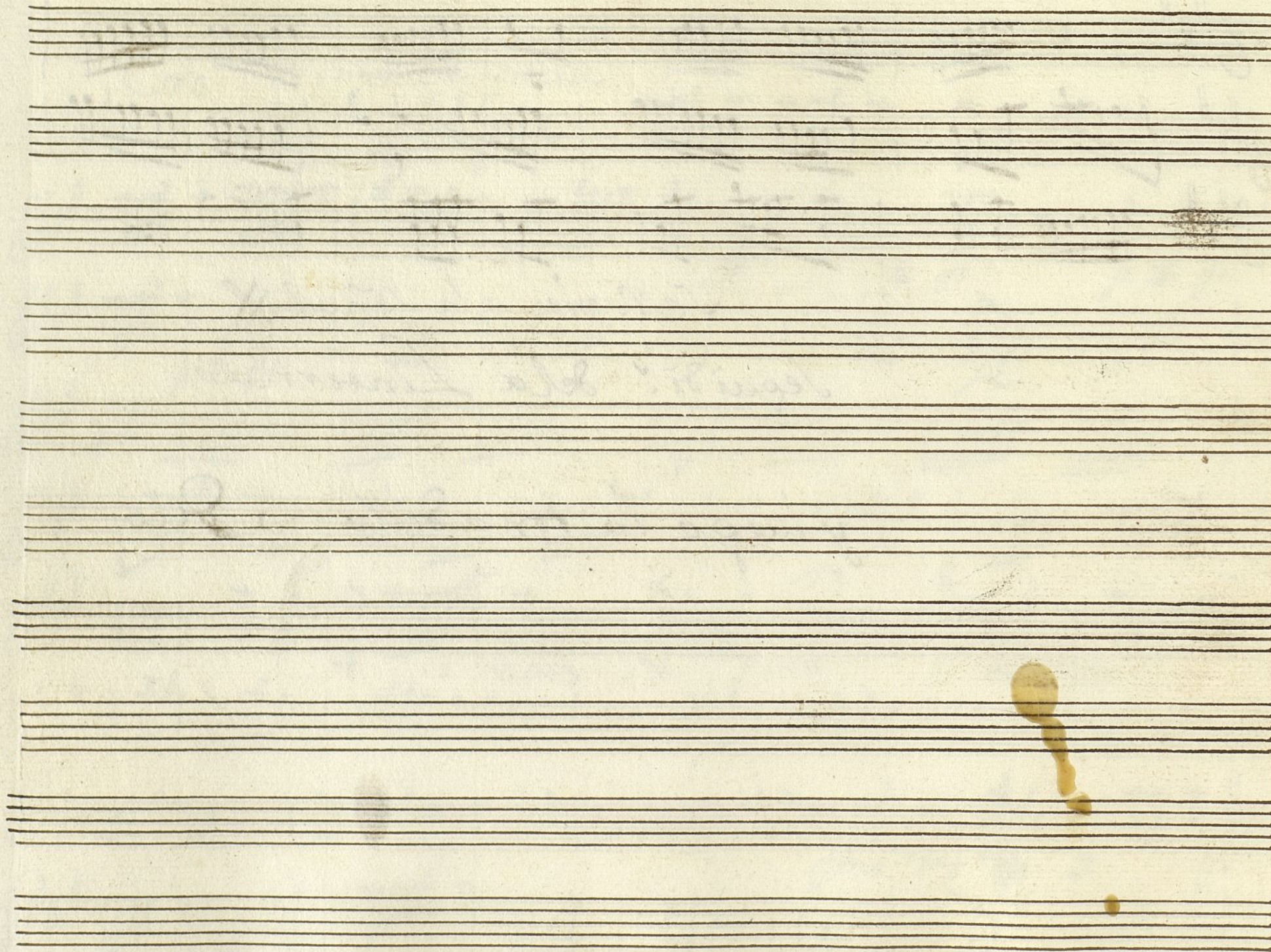
Handwritten musical score for a chorus, featuring ten staves with various musical notations, including treble clefs, key signatures of two sharps (F# and C#), and time signatures of 6/8 and 4/4. The score includes dynamic markings like 'p' (piano) and 'f' (forte), and tempo markings like 'Allegro'. There are also handwritten annotations such as '2 veces' (2 times) and 'Para' (For). The manuscript shows signs of age, with some ink bleed-through and a large dark stain on the right side.



Se Repite a la Señal X

Seguidi.ª de la Linterna

y luego la tonadilla a duo



Violín Primero

Duplicado

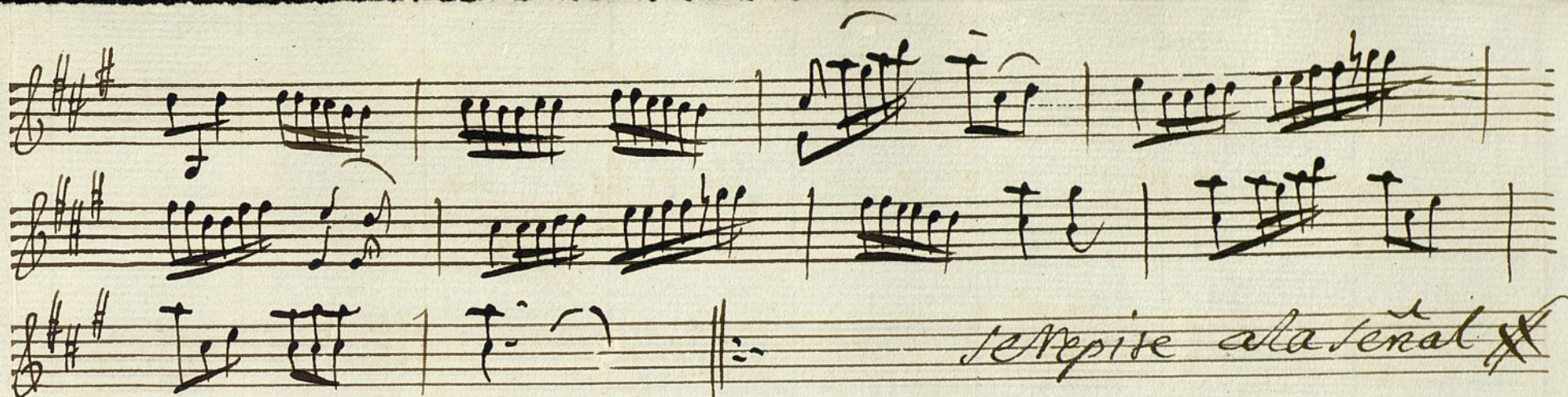
del Entremes

Coro.

Alleg

$\text{H}\flat$ $\text{H}\sharp$ $\text{H}\sharp$ $\frac{6}{8}$

Handwritten musical score for a choir, featuring ten staves. The notation includes various musical symbols such as notes, rests, and dynamic markings. The key signature is $\text{H}\flat$ $\text{H}\sharp$ $\text{H}\sharp$ and the time signature is $\frac{6}{8}$. The score includes several measures of music, with some measures crossed out. The word "Coro." is written at the top left, and "Alleg" is written above the first staff. The word "para" is written below the seventh staff. The word "fmo" is written below the eighth staff. The word "p.o." is written below the second, third, fourth, fifth, sixth, seventh, eighth, and ninth staves. The word "vo2" is written above the second staff. The word "p.o." is written below the first staff. The word "p.o." is written below the second staff. The word "p.o." is written below the third staff. The word "p.o." is written below the fourth staff. The word "p.o." is written below the fifth staff. The word "p.o." is written below the sixth staff. The word "p.o." is written below the seventh staff. The word "p.o." is written below the eighth staff. The word "p.o." is written below the ninth staff. The word "p.o." is written below the tenth staff.



seguí.ª de la Linterna

y luego la sonadilla a dúo

Violín Segundo.

del Entremes

Coro Allegro $\text{G}\sharp\text{F}\sharp\text{C}$ $\frac{5}{8}$ $\text{C}\sharp\text{F}\sharp\text{C}$

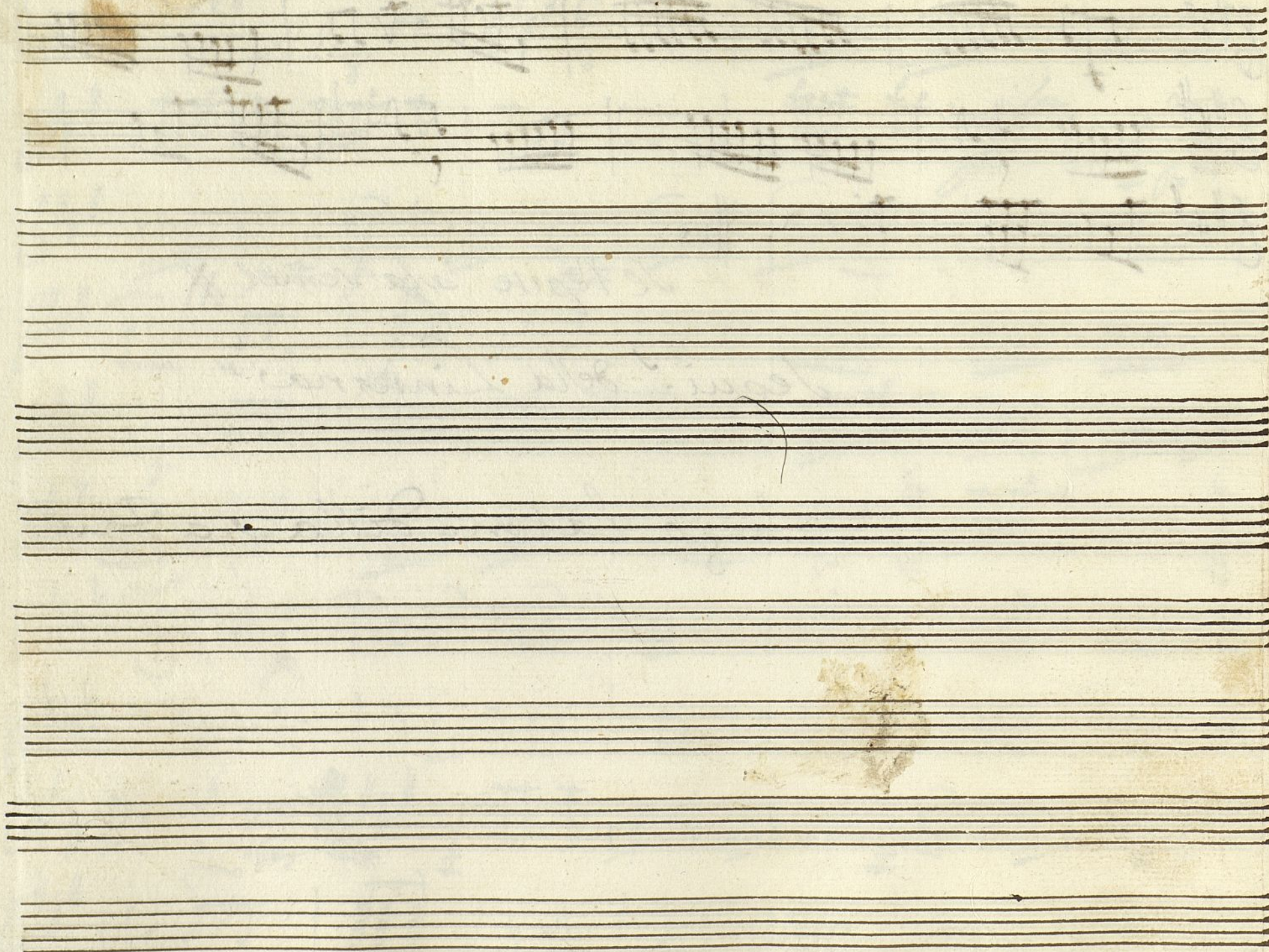
Handwritten musical score for a Coro (Chorus) in G major, 5/8 time. The score consists of 10 staves. The first staff is the vocal melody, marked 'Coro' and 'Allegro'. The second staff is a piano accompaniment, marked 'p.' and 'vo'. The third staff is a piano accompaniment, marked 'p.'. The fourth staff is a piano accompaniment, marked 'p.'. The fifth staff is a piano accompaniment, marked 'p.'. The sixth staff is a piano accompaniment, marked 'p.'. The seventh staff is a piano accompaniment, marked 'p.'. The eighth staff is a piano accompaniment, marked 'p.'. The ninth staff is a piano accompaniment, marked 'p.'. The tenth staff is a piano accompaniment, marked 'p.'. The score includes various musical notations such as treble and bass clefs, key signatures, time signatures, and dynamic markings. There are some corrections and deletions in the score, particularly in the second and eighth staves.



Se Repite ala señal X

Sequi.^{ta} de la Linserna,

y luego la tonadilla a Dios



4

Flauta 1.^a

del Entremes

+

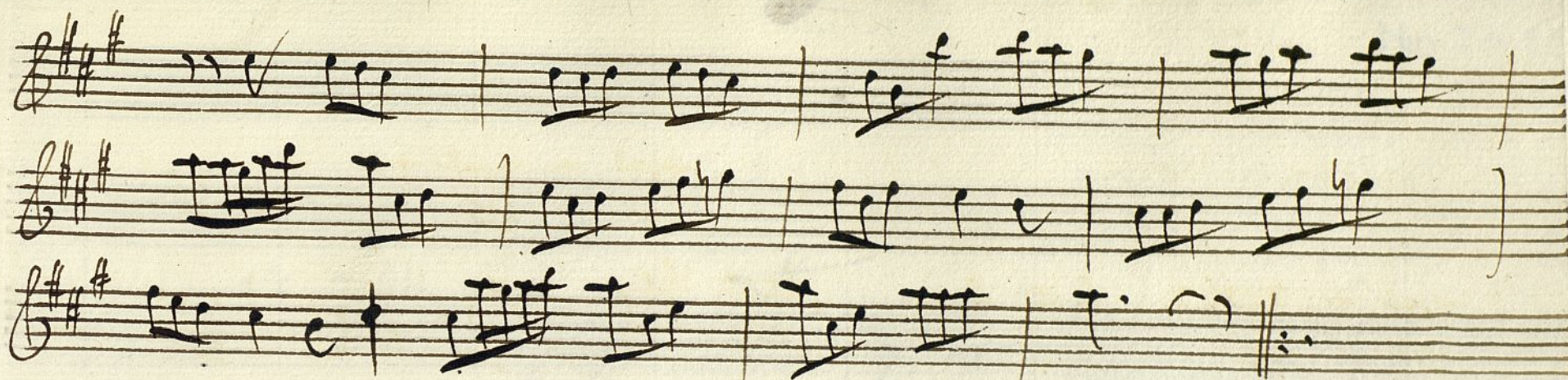
Pausa Coro

Alleg.^{ro} $\text{G}\sharp\text{F}\sharp$ $\frac{6}{8}$

voz

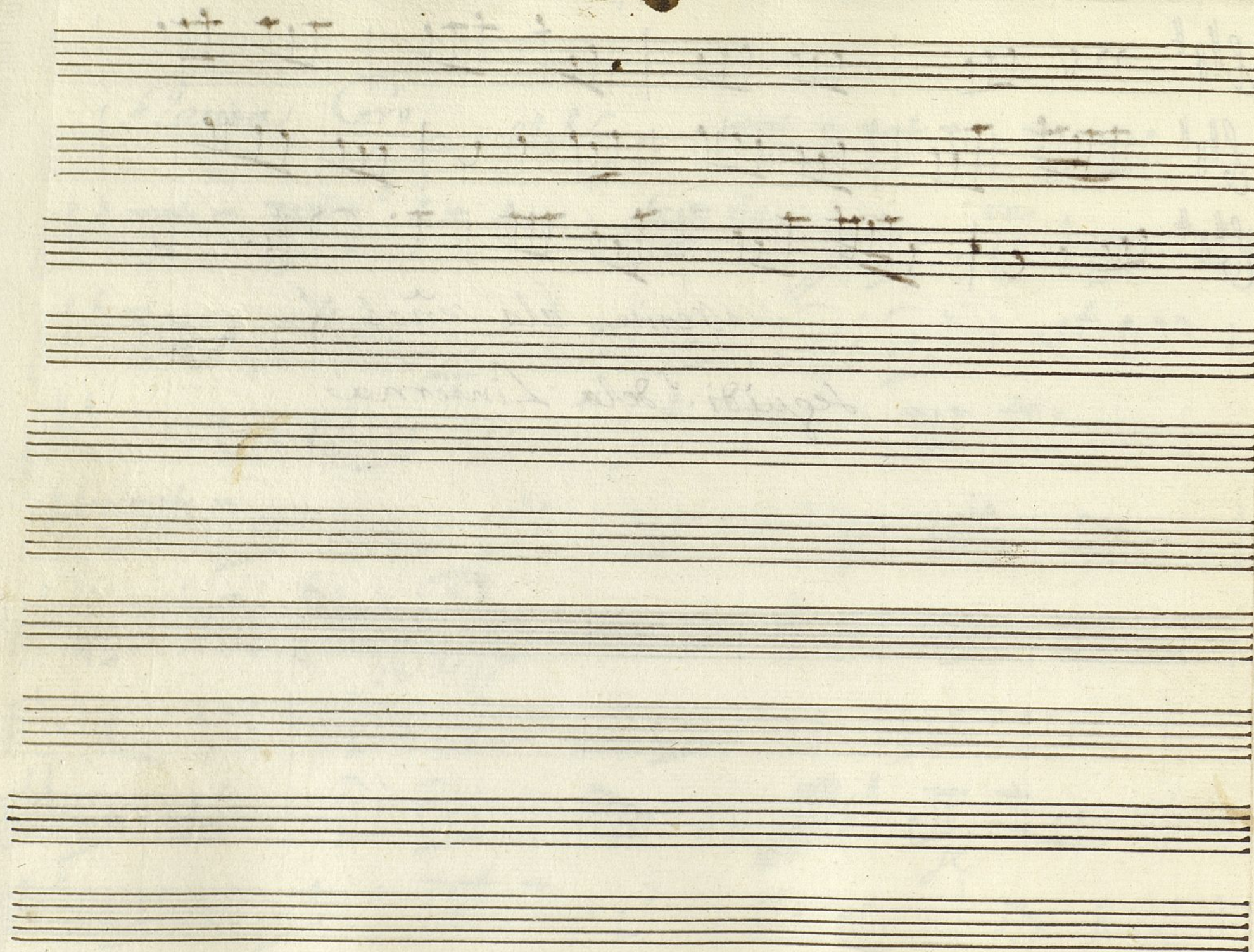
Para p.

je



se repite ala señal X

seguidi.ª de la Linserna



Flauta 2^a

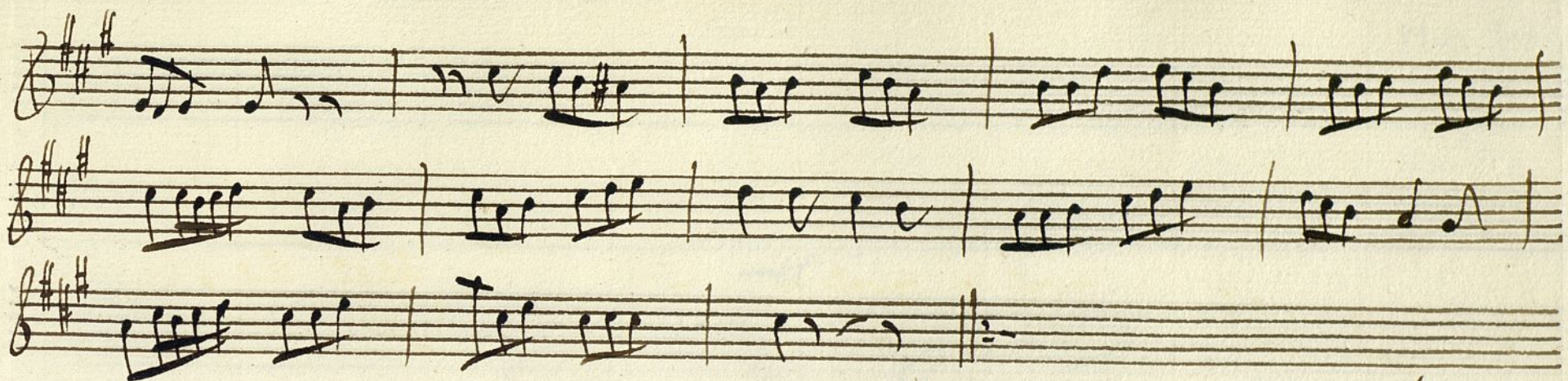
Del Enrimes

Klausura Coro

Alleg.^{ro}

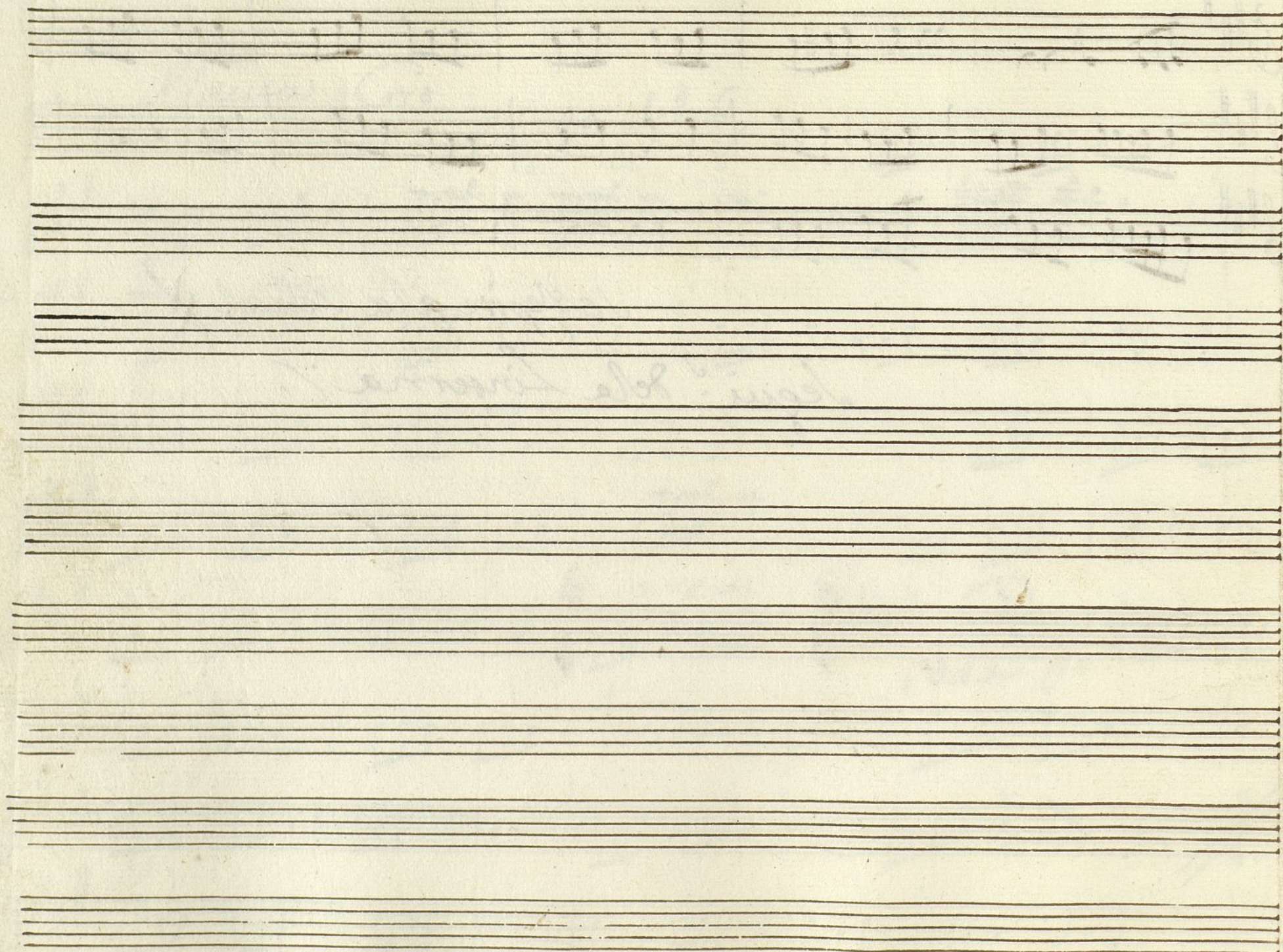
8^{va} 6/8

Handwritten musical score for 'Klausura Coro'. The score is written on ten staves. The key signature is D major (two sharps). The time signature is 6/8. The tempo is marked 'Alleg.^{ro}'. The score includes various musical notations such as notes, rests, and dynamic markings. The first staff has a treble clef and a key signature of D major. The second staff has a treble clef and a key signature of D major. The third staff has a treble clef and a key signature of D major. The fourth staff has a treble clef and a key signature of D major. The fifth staff has a treble clef and a key signature of D major. The sixth staff has a treble clef and a key signature of D major. The seventh staff has a treble clef and a key signature of D major. The eighth staff has a treble clef and a key signature of D major. The ninth staff has a treble clef and a key signature of D major. The tenth staff has a treble clef and a key signature of D major. The score ends with a double bar line and a repeat sign.



se Repite ala señal

Segui: de la Linserna /.



tr
Trompa 1^a

Del Entremes

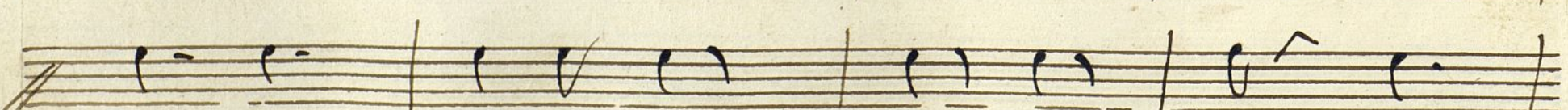
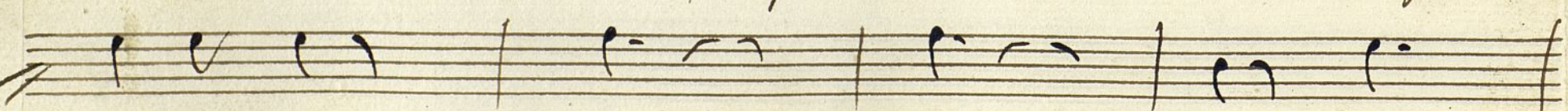
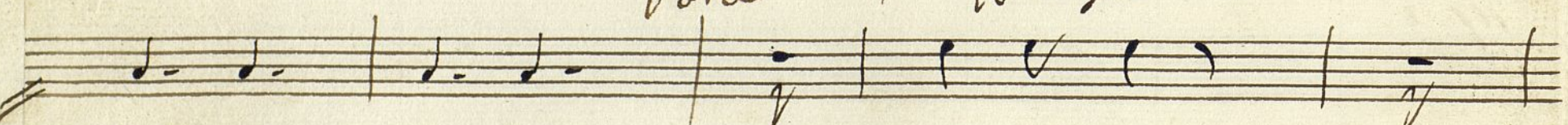
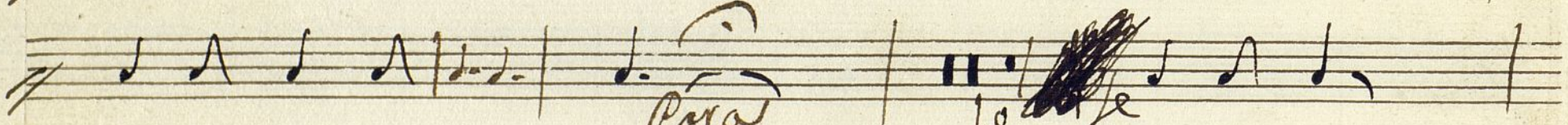
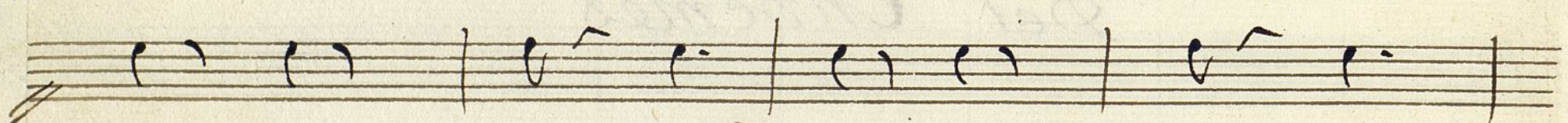
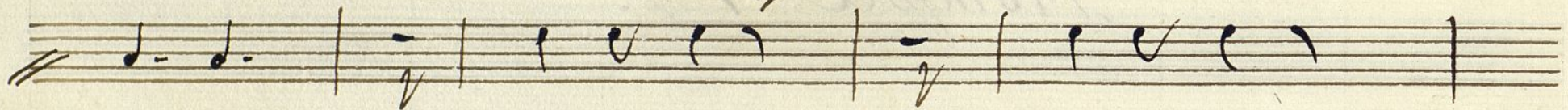
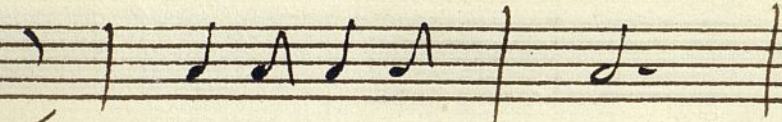
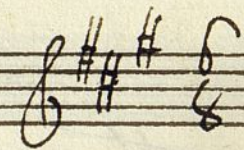
+

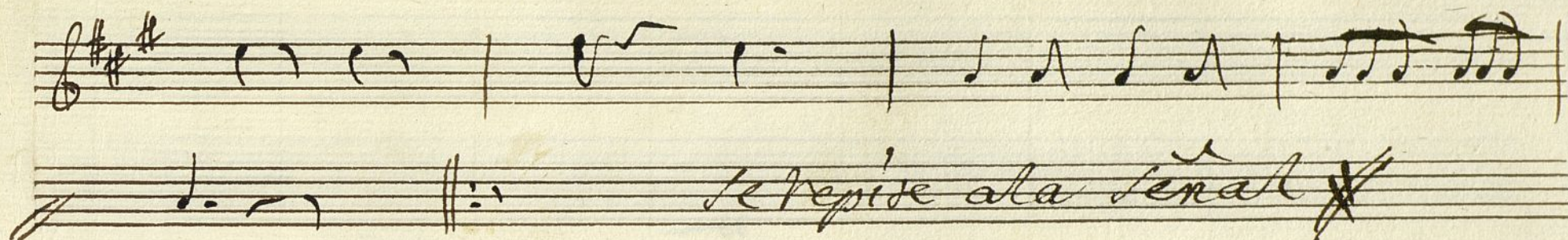
Alamirre

Coro

Alleg.

No





Seguidi.^o de la Linterna

y luego la tonadilla adus

Ayuntamiento de Madrid

u
Trompa 2^a

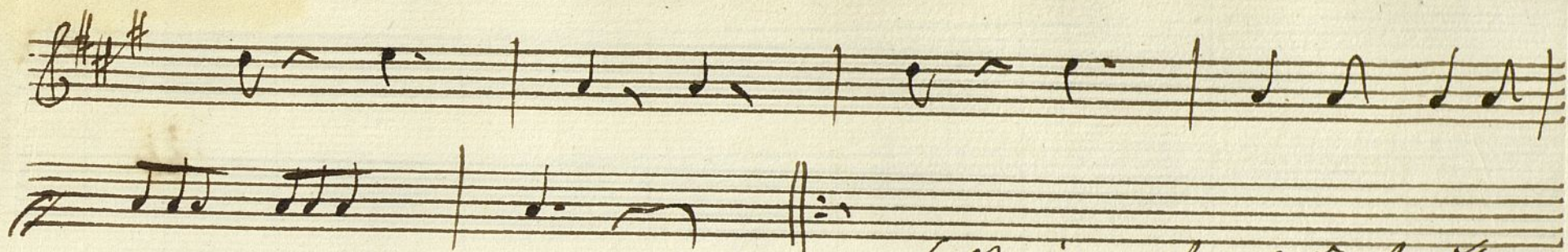
del Entremes

+

Alamirre Coro

Alleg.^{ro} 6/8

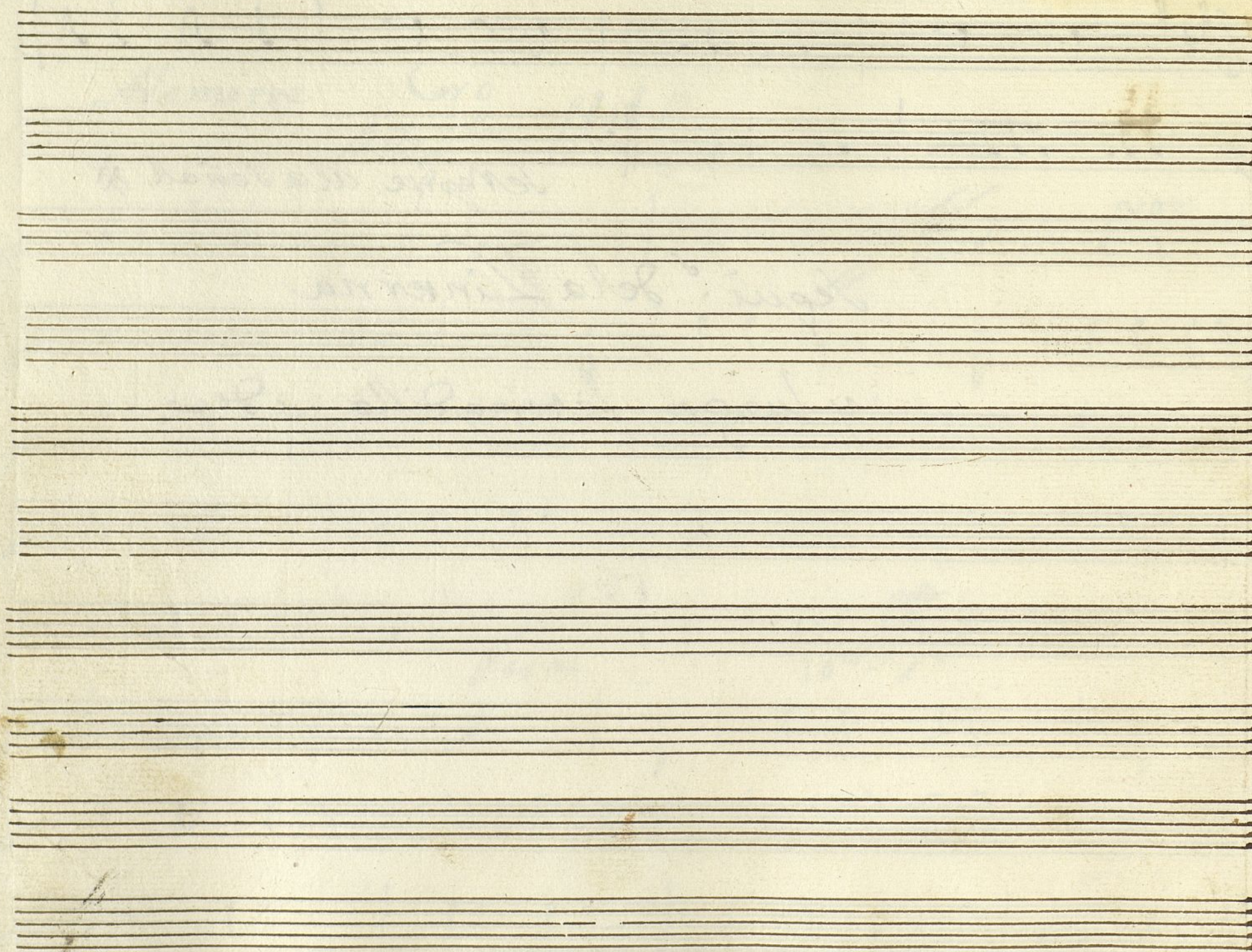
Handwritten musical score for 'Alamirre Coro'. The score is written on ten staves. The first staff contains the title 'Alamirre Coro' and the tempo 'Alleg.^{ro} 6/8'. The music is written in a key with three sharps (F#, C#, G#) and a 6/8 time signature. The notation includes various note values, rests, and dynamic markings. There are several corrections and deletions throughout the score, including a large 'X' over a section on the second staff and a '10' written below a section on the seventh staff. The word 'para' is written below the sixth staff. The score ends with a double bar line on the tenth staff.



Se repite ala señal #

Sequi.^o de la Linterna

y luego la tonadilla a dúo



~~66~~

Violon

Del Enemigo

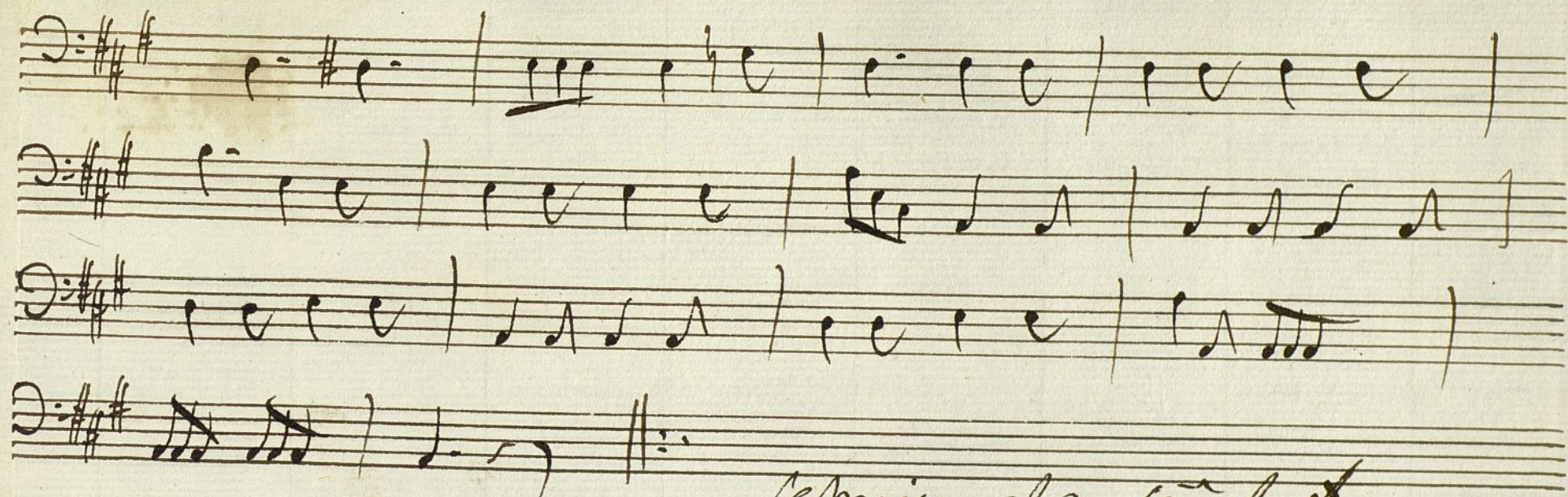
+

Coro.

Alleg.

$\text{D}=\text{F}\#\text{F}\#$
 $\frac{6}{8}$

Handwritten musical score for a choir, featuring ten staves. The notation includes various musical symbols such as notes, rests, and dynamic markings. The first staff is marked "Alleg." and the key signature is $\text{D}=\text{F}\#\text{F}\#$ with a $\frac{6}{8}$ time signature. The second staff has a "voz" marking. The seventh staff has a "Poco" marking. The tenth staff has a "Fmo" marking. There are several crossed-out sections in the second and tenth staves.



Se repite ala señal X

Seguidi. de la Linterna

y luego la tonadilla adu