

Mus 71-17

+

Musica del Emperador

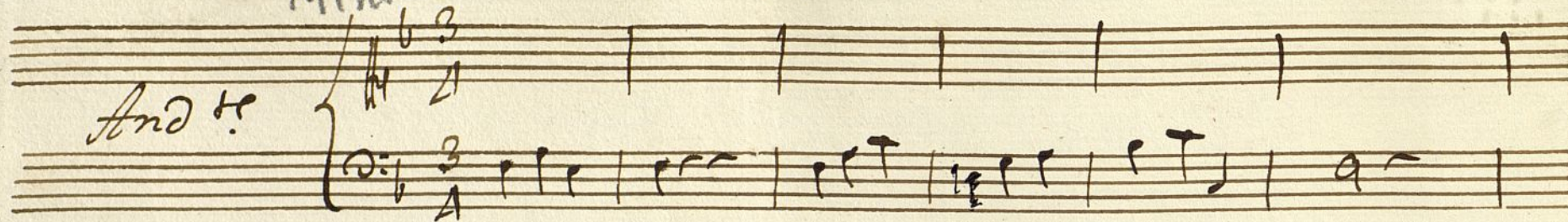
Las Alemanas [que eran]

Del Sr. Esteve Sed. Pablo.

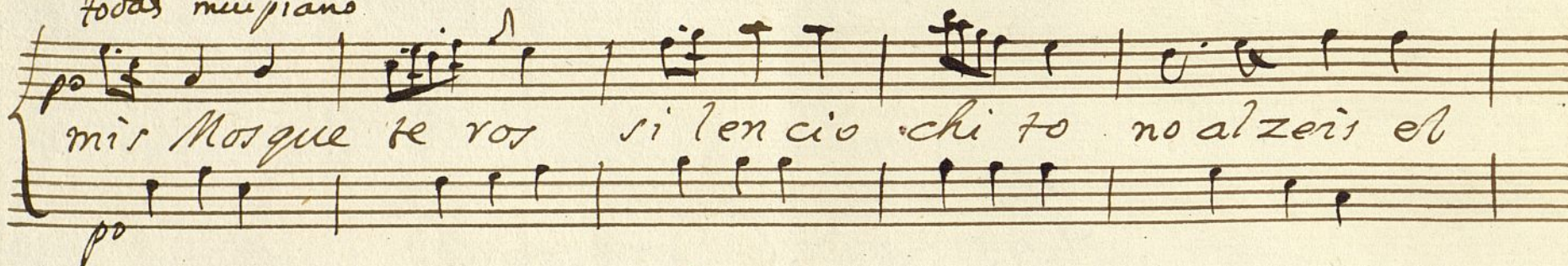


Minne

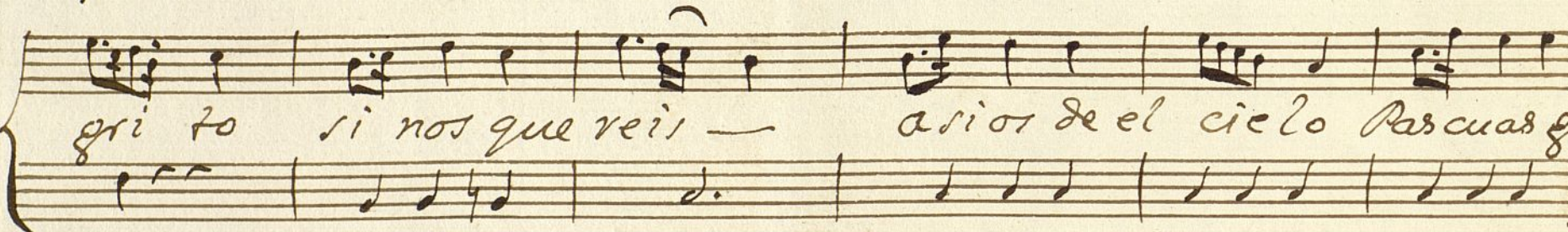
And te



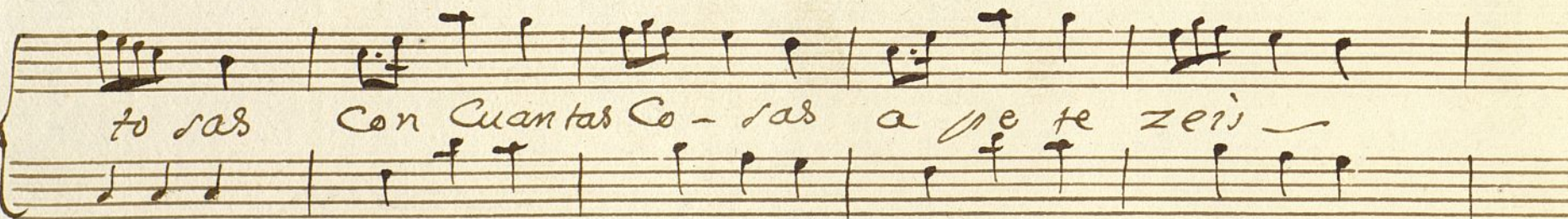
todas muy piano



mir Mosque te vos si len cio chi to no al zeis el



gri to si nos que veis — a rior de el cielo Pascuas gus



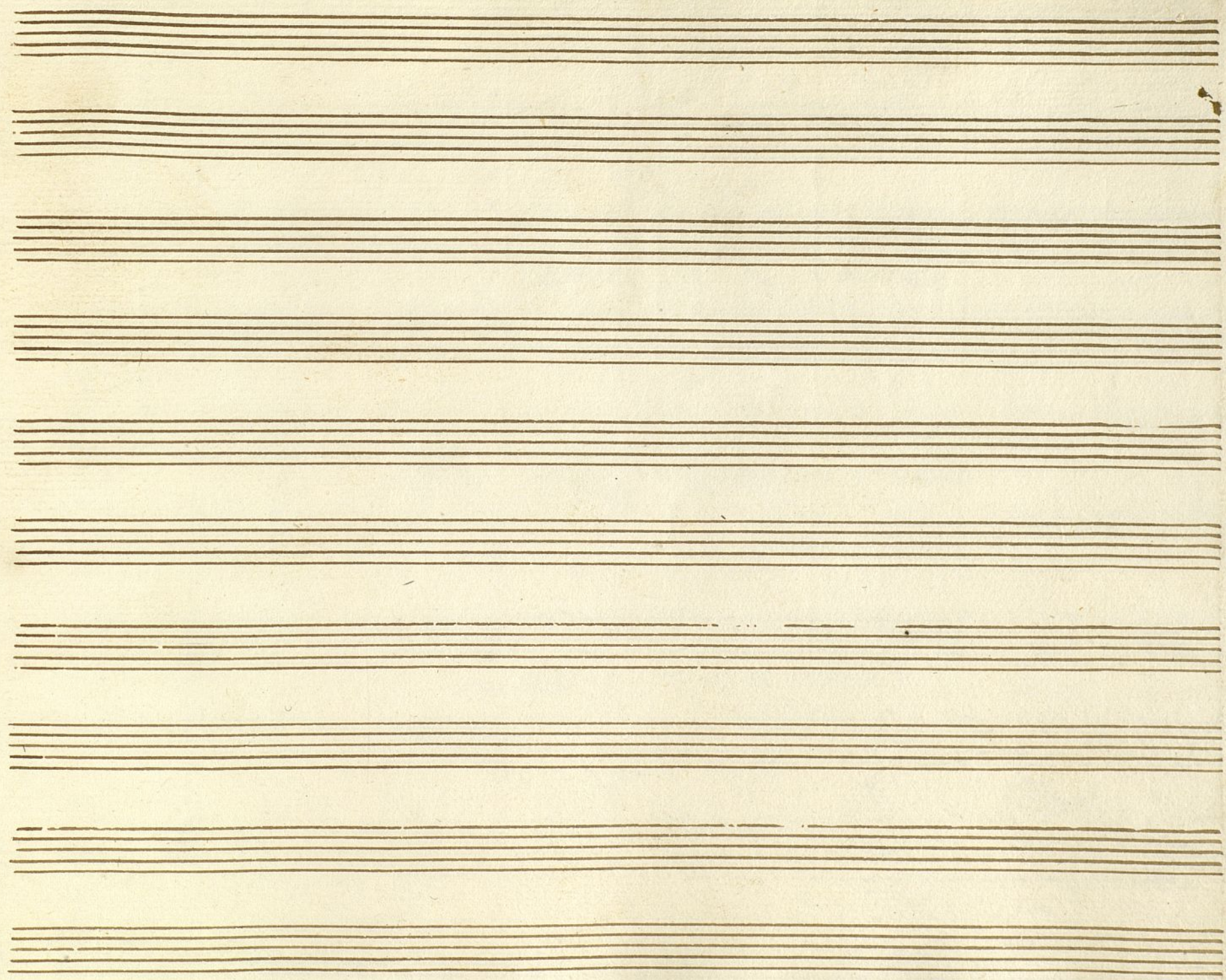
to ras Con Cuantas Co - ras a pe te zeis —



a pe te zeis;



8









+

Parte de Clave

en el Entremes

Las Alemanas !.

/

Clave

71. 17.



# Minae

7

3  
4

3  
4

todas

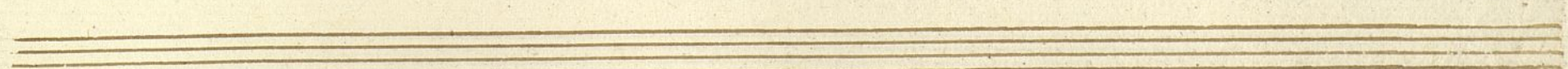
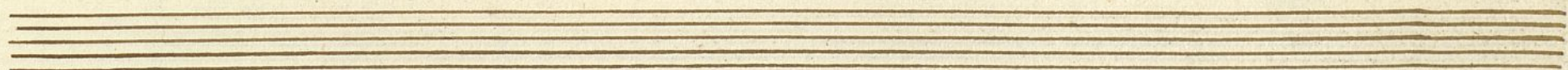
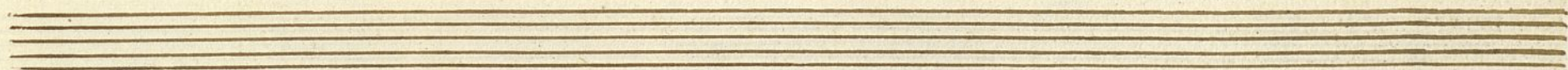
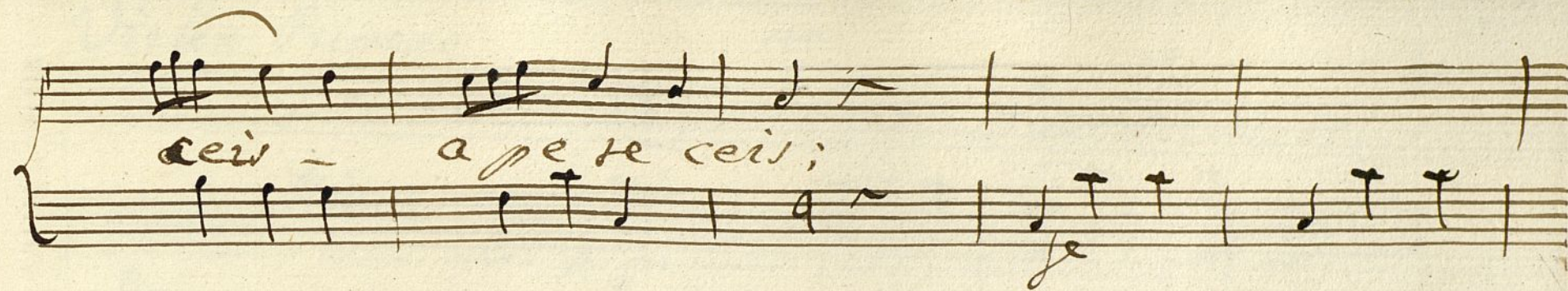
Mis Mosque se - ros

silencio chi to no al rei el gri to

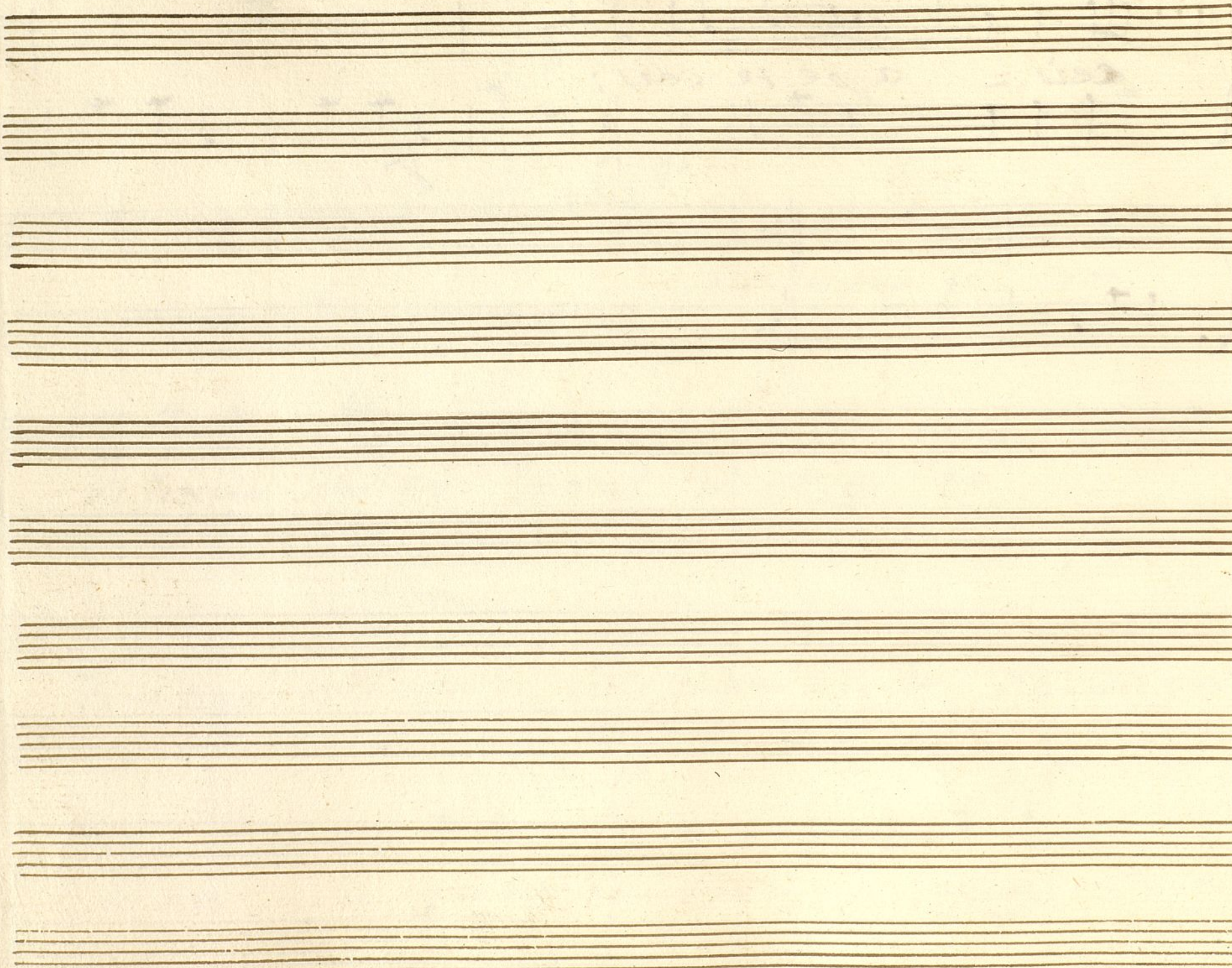
Sino que rei - arios del cielo Pascuas gas

to - as Con quantas Co - ras a pe se











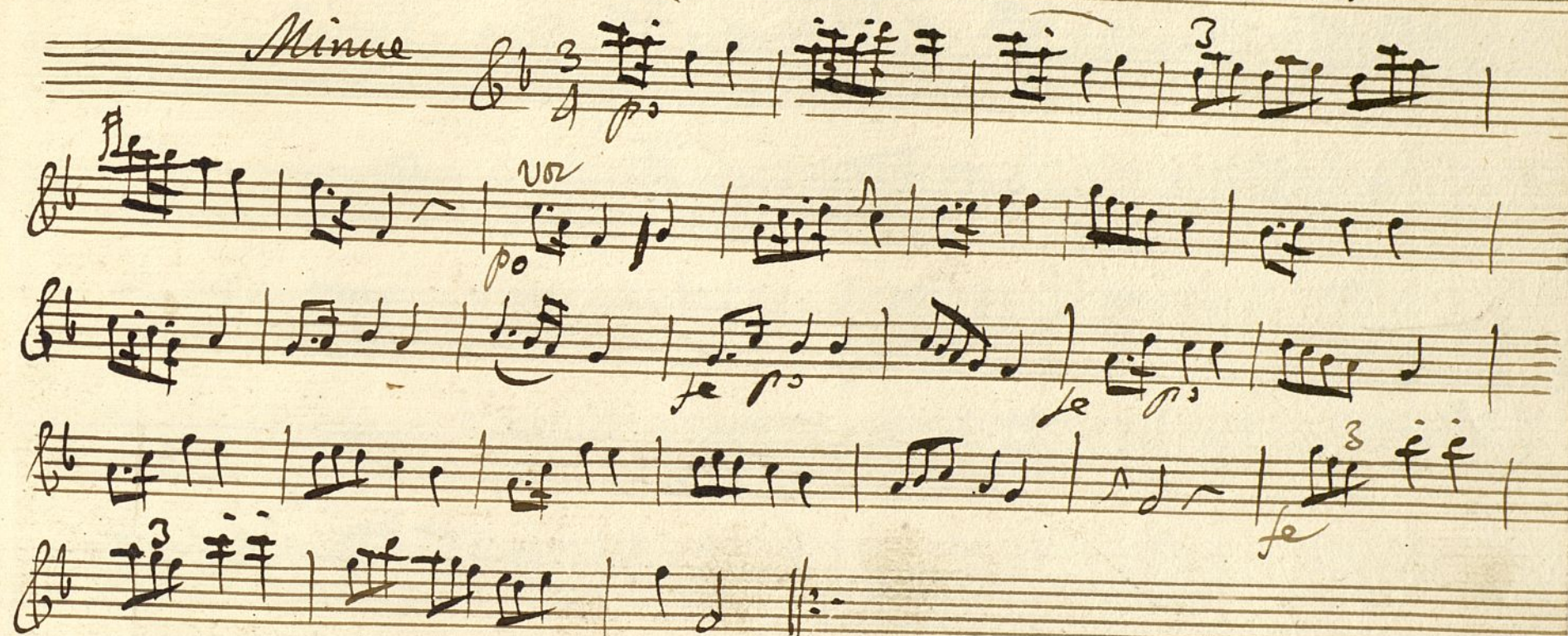
Violin Primero

+

Mus 71-17

Del Embraces; Las Alemanas 1,

Minue









Violin segundo

Del Entremes; Las Alemanas.

Nº 71-17

Musical score for Violin second, titled "Del Entremes; Las Alemanas." The score is written on six staves. The first staff is labeled "Minue" and includes a treble clef, a key signature of one sharp (F#), and a 3/4 time signature. The notation includes various musical symbols such as notes, rests, and dynamic markings like "p" (piano) and "f" (forte). The score concludes with a double bar line and a fermata on the final note of the sixth staff.







Violin segundo

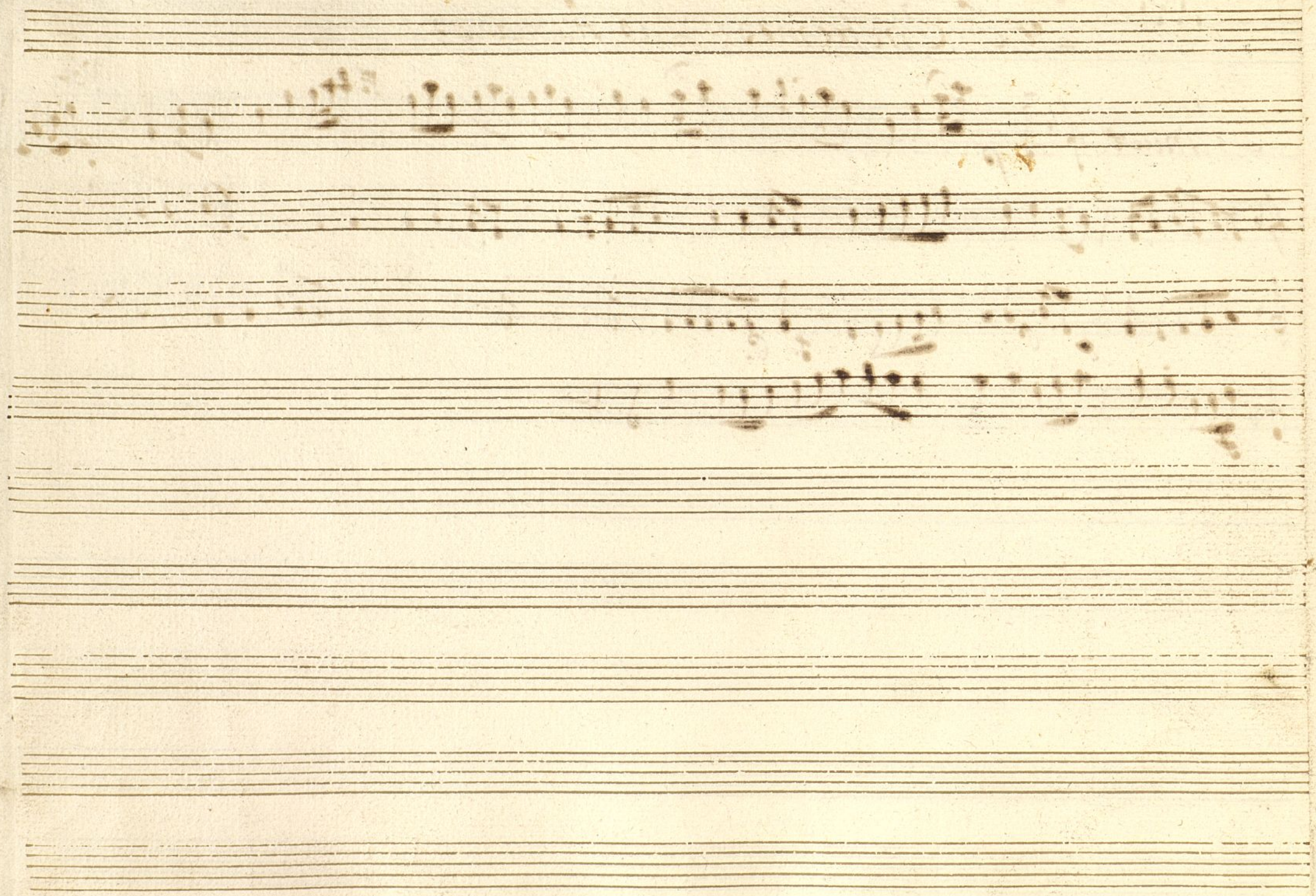
Mus 71-17

el Entremes; Las Alemanas.

Minuet  $\text{3/4}$

Voz







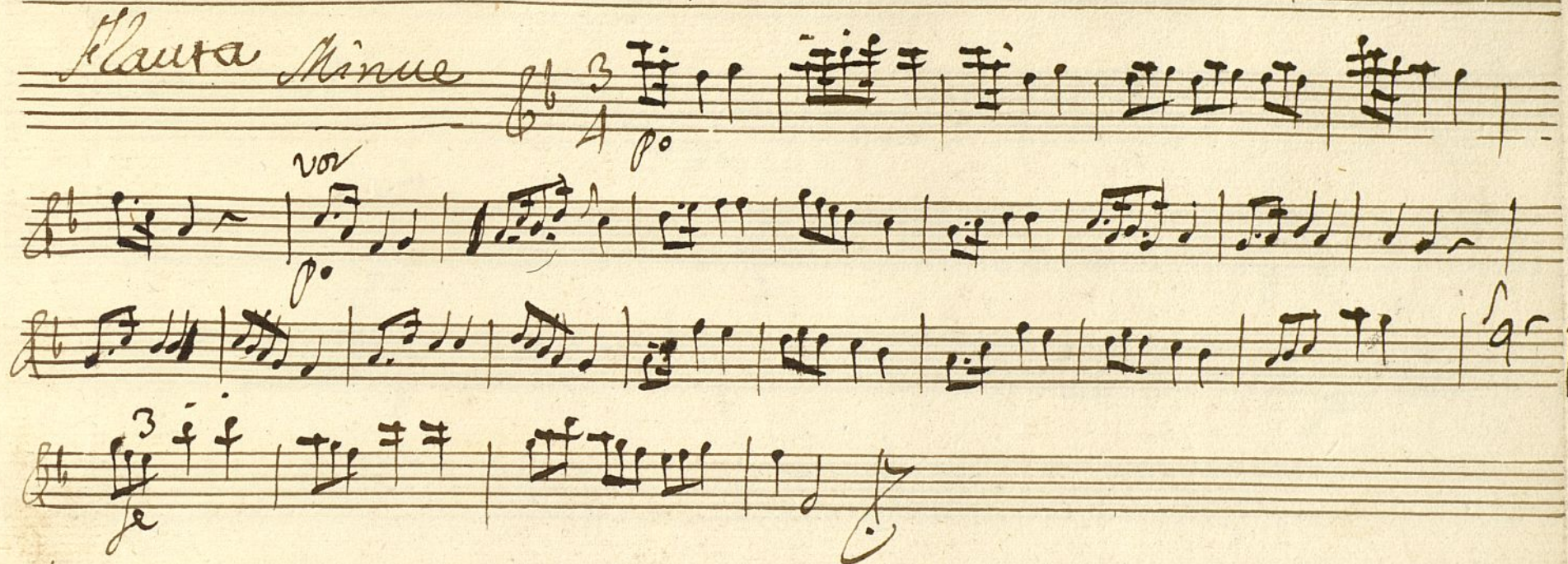
Oboes.

+

Nos 71-17

Del Entremes; Las Alemanas.

Flauta Minue





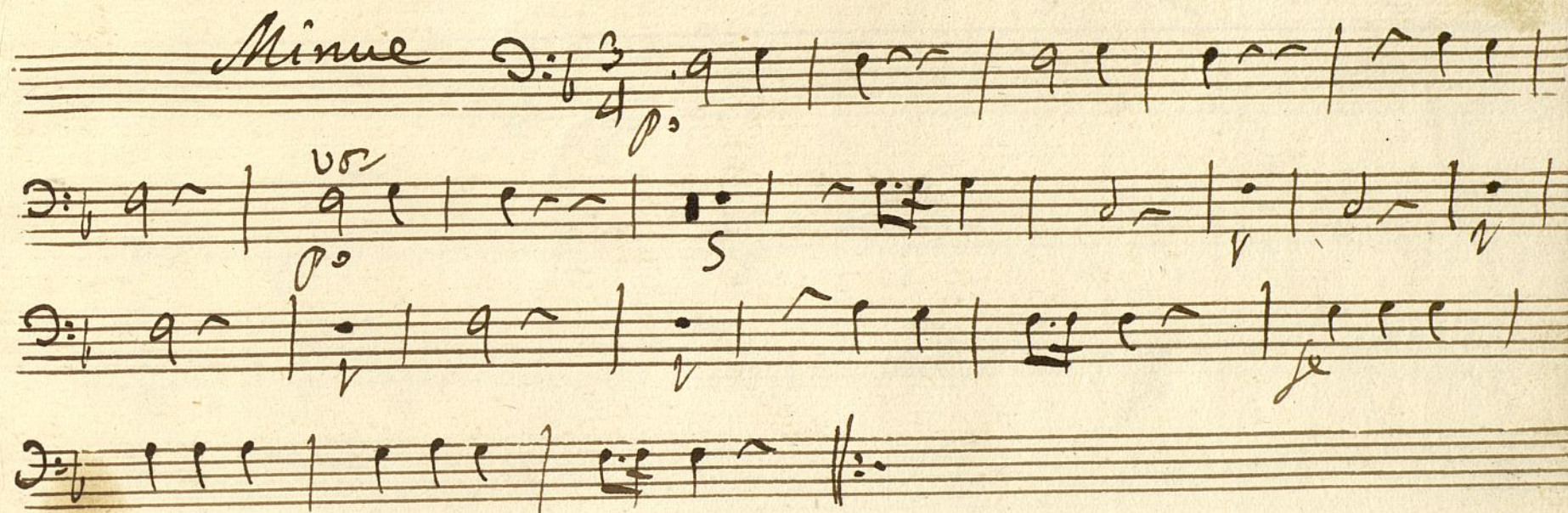
Ayuntamiento de Madrid



Trompa 1.<sup>a</sup>

Mus 71-17

Del Emperador: La Alemana 1.

















Violon

Mus 71-17

Del Intemer; La Alemanas i.

Minue  $\text{D}:\flat \frac{3}{4}$   $\text{p}^o$

$\text{D}:\flat$   $\text{p}^o$

$\text{D}:\flat$   $\text{p}^o$   $\text{p}^o$

$\text{D}:\flat$   $\text{p}^o$