

Partes de aquesta,
incompletas.

Mus 71-31

Musica del Entremes

La puerta del Sol:

Del Sr. Guerrero %

Handwritten musical score on aged paper. The score is written in a single system with multiple staves. The tempo is marked "Allegro" and the key signature is one sharp (F#). The lyrics are in Spanish and appear to be a song or a piece of music with a narrative. The lyrics are: "todos los que se pierden aqui se en", "quien tran", "aqui se en Cuen tran", "pero otros suelen", "por ser unico sitio de Con Currencia por ser unico", "per der re y tan per didos que no pa re zen per der re y tan per". The music is written in a style that suggests it is a historical manuscript, with some corrections and markings. The paper is aged and shows signs of wear.

Handwritten musical notation on a single staff, featuring a treble clef and a key signature of one sharp (F#). The notation includes a series of notes and rests, with a double bar line and a repeat sign (|| 2.) indicating the end of a phrase. Below the staff, the lyrics "si tio de Con Curren cia" and "di dos que no parecen" are written in a cursive script.

si tio de Con Curren cia —
di dos que no parecen —

Handwritten musical notation on a single staff, featuring a treble clef and a key signature of one sharp (F#). The notation includes a series of notes and rests, with a double bar line and a repeat sign (|| 2.) indicating the end of a phrase. Below the staff, the tempo marking "allegro" is written in a cursive script.

allegro

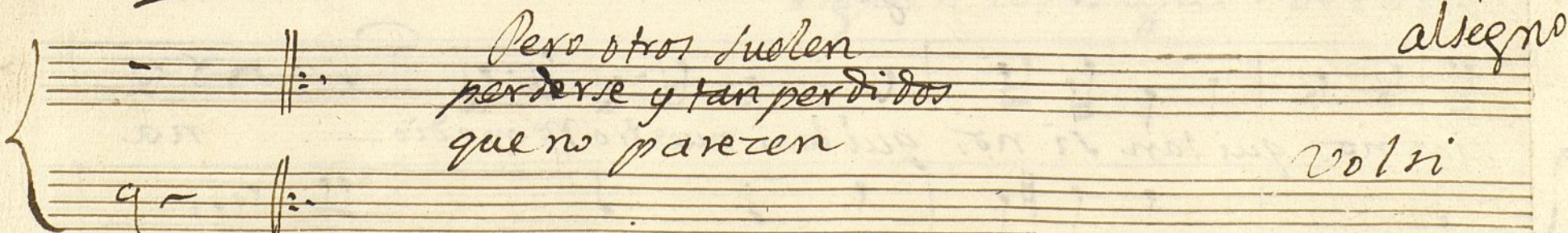
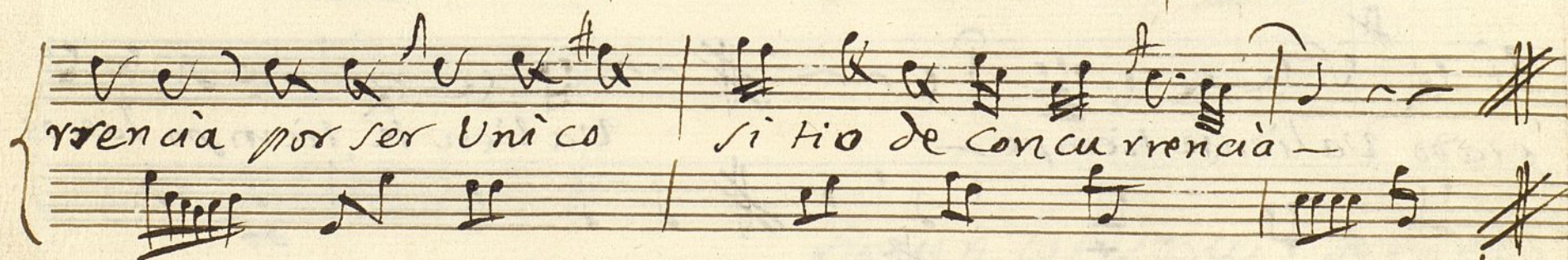
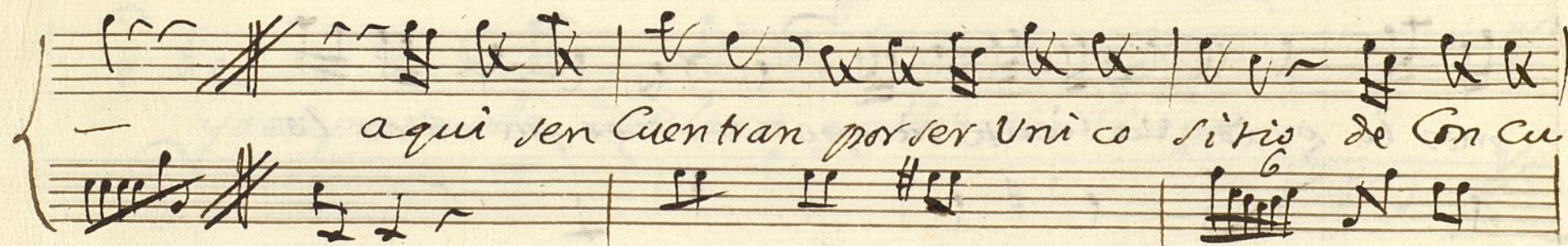
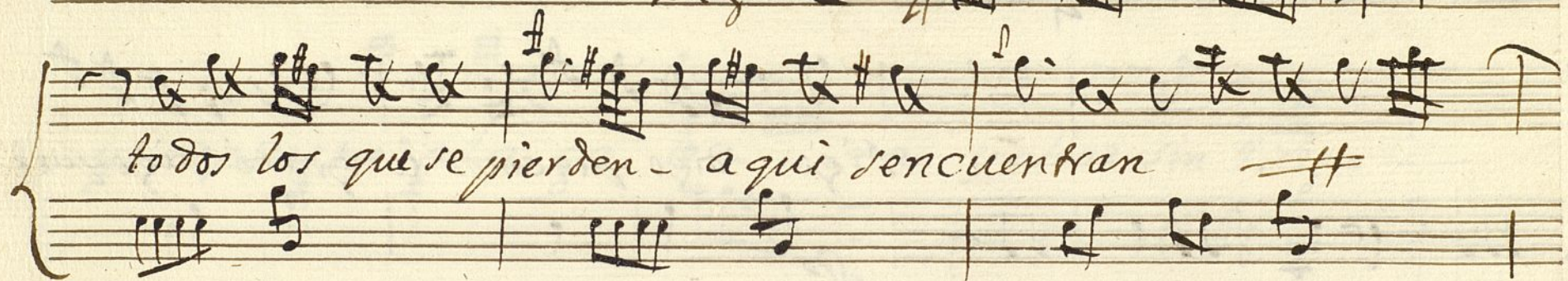
Parte de Clave 1.

+ Se empieza a la buelta

Entre mes: La Puerta del Sol:

MUS 71-31

Alleg.^{ro}



Segui.ª la Zarro

And.te

Handwritten musical score for 'Segui.ª la Zarro'. The score is written on five systems of staves. The first system shows a treble and bass staff with a key signature of three sharps (F#, C#, G#) and a 3/4 time signature. The tempo is marked 'And.te'. The lyrics are written below the staves, with some words appearing on the upper staff and others on the lower staff. The lyrics are: 'digo digo que emos lo grado digo que e mos lo grado va liente tiempo - digo que emos lo grado va liente tiempo - va lien te tiempo las os sias nos qui tan si nos qui tan nuestro re medio - na'. The score includes various musical notations such as notes, rests, and bar lines.

digo digo que emos lo grado digo que e
mos lo grado va liente tiempo - digo que emos lo
grado va liente tiempo - va lien te tiempo las os
sias nos qui tan si nos qui tan nuestro re medio - na

ranjas naranjas dulces naranjas naranjas vendo

yo expuesta ala ga le - - - ra yellas sin riesgo

yo expuesta ala Sa lera yellas sin riesgo

siguen las segui. de todas

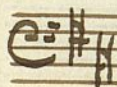
Segui^s parte //

7
Trompa 1.^a del Entremes; La puerta del Sol 7.

Mus 71-31

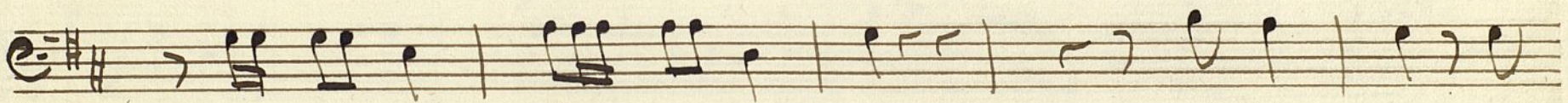
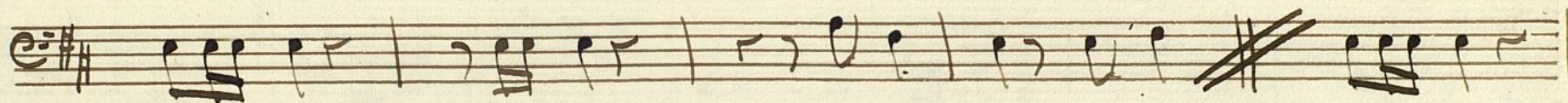


allegro



Segui^s parte

Segu. ⁷ pace
Trompa 2^a del Entremes; La puerta del Sol. Mus 71-31



allegro

Segu. ⁷ pace

Violon En breves: La Puerta del Sol

MUS 71-31

Segui

Alleg. [#] modo [#]

$\text{S:} \begin{smallmatrix} \text{F} \\ \text{A} \end{smallmatrix} \text{B} \text{B}$

$\text{S:} \begin{smallmatrix} \text{F} \\ \text{A} \end{smallmatrix} \text{B} \text{B}$

$\text{S:} \begin{smallmatrix} \text{F} \\ \text{A} \end{smallmatrix} \text{B} \text{B}$

$\text{S:} \begin{smallmatrix} \text{F} \\ \text{A} \end{smallmatrix} \text{B} \text{B}$

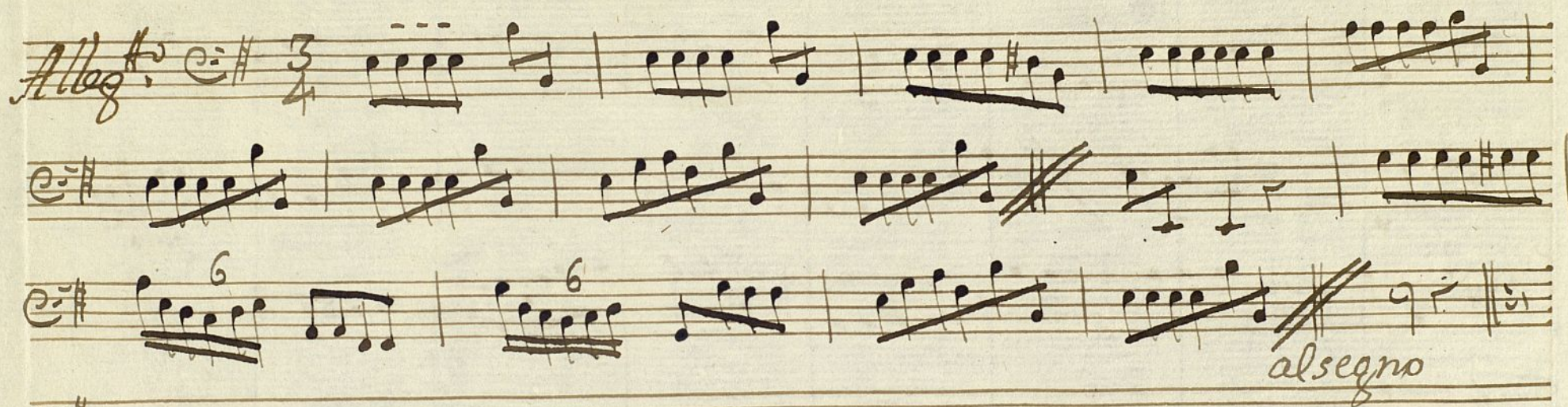
$\text{S:} \begin{smallmatrix} \text{F} \\ \text{A} \end{smallmatrix} \text{B} \text{B}$

$\text{S:} \begin{smallmatrix} \text{F} \\ \text{A} \end{smallmatrix} \text{B} \text{B}$

allegro

Volta

Sinfonia
Sinfonia, del Concerto, Capriccio del Sol 4/4



E major

E major

Volta