

Violin Primo

Σ Ιταλ. 1786
(over libretto)

(over libretto)

James 002 Mus 71-46

Del Sainete; el Manchego en la Corte; y para el
arriador

αρεταδοχ

Tota $\text{G}\sharp\text{A}$ $\frac{3}{8}$

A single staff of handwritten musical notation. The notation is dense, with many notes and rests written in a cursive, overlapping style. Above the staff, the word "Vor" is written in a simple, handwritten font. The notation appears to be a single melodic line, possibly for a voice or a single instrument. The paper is aged and slightly discolored.

A single staff of handwritten musical notation. The notation is in a historical style, possibly from a 16th or 17th-century manuscript. It features various note values, including minims, crotchets, and quavers, as well as rests and bar lines. The ink is dark, and the paper shows signs of age and wear.

A single staff of handwritten musical notation. The notation includes various note values (quarter, eighth, and sixteenth notes), rests, and a key signature change to one sharp (F#). The handwriting is in a cursive style, typical of 18th-century manuscript notation.

A single staff of handwritten musical notation. The notation includes a variety of note values, including minims, crotchets, and quavers, along with rests. The ink is dark and the paper is aged. The notation is written in a style characteristic of 18th or 19th-century manuscript notation.

le

Sev'pate al segno #

Signes Sequi & Illas

Segue Segue Orlla

Alleg. 43

A handwritten musical score on aged paper. The title 'Segue Segue Orlla' is written in a cursive script at the top. Below it, 'Alleg.' is written on the left, and '43' is written above the first measure. The music is written on a single staff with a treble clef and a key signature of one sharp (F#). The tempo 'Alleg.' is indicated. The score consists of several measures of music, including some with triplets (indicated by a '3' over a group of notes). The handwriting is fluid and characteristic of 18th or 19th-century musical notation.

A single staff of handwritten musical notation. The notation includes various note values, rests, and a double bar line. The ink is dark and the paper is aged.

Ayuntamiento de Madrid

Violin Primero

Mus 71-46

Del Sainete; el Manchego en la Corte; y para el arie
arado

Nota 8/4 3/4

se

Se repite al Segno #

Segui 3/4 Alleg.
Sigue en Segui.
Alleg.
3

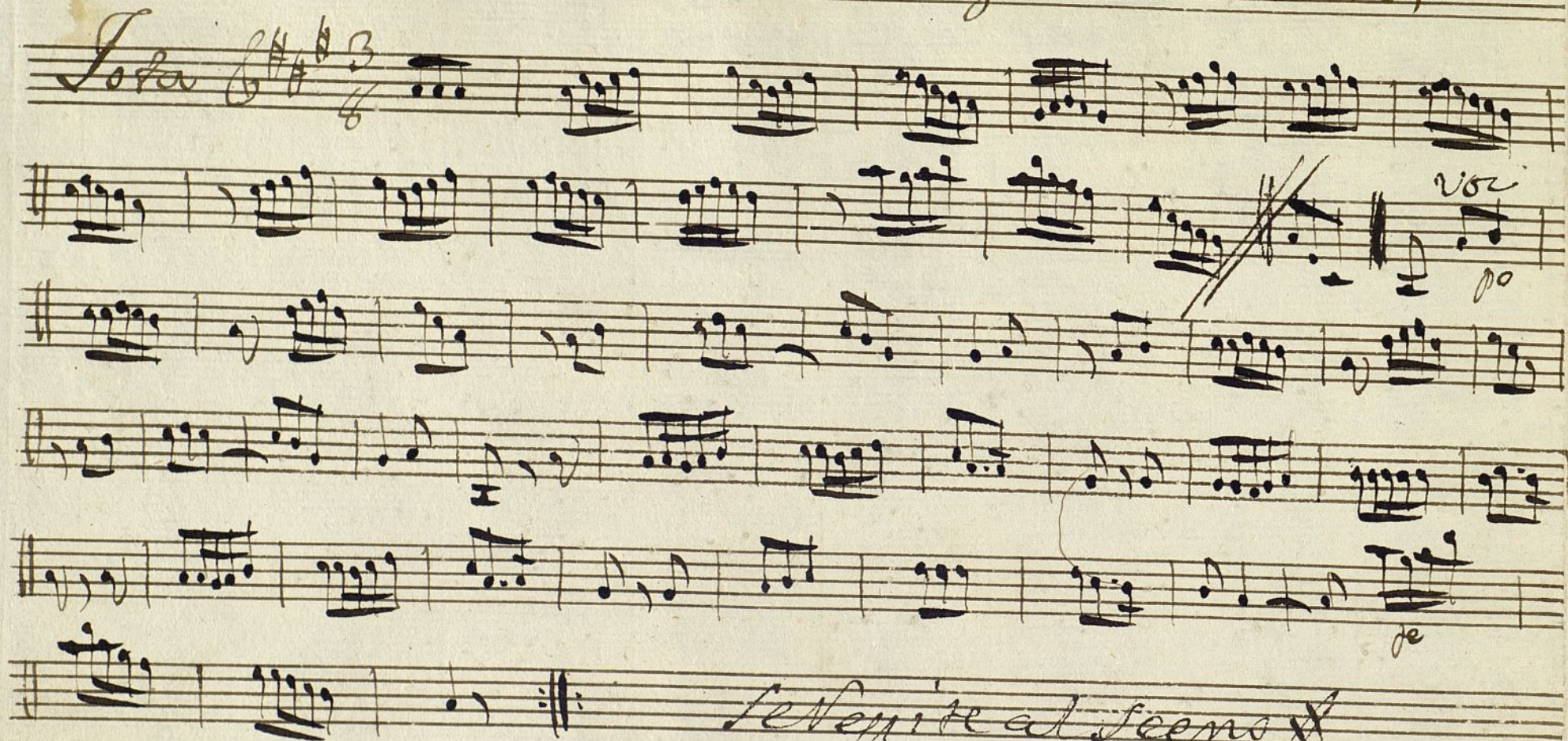
se Al Segno

Violin Segundo

Mus 71-46

del Sainete; el Manchego en la Corte;

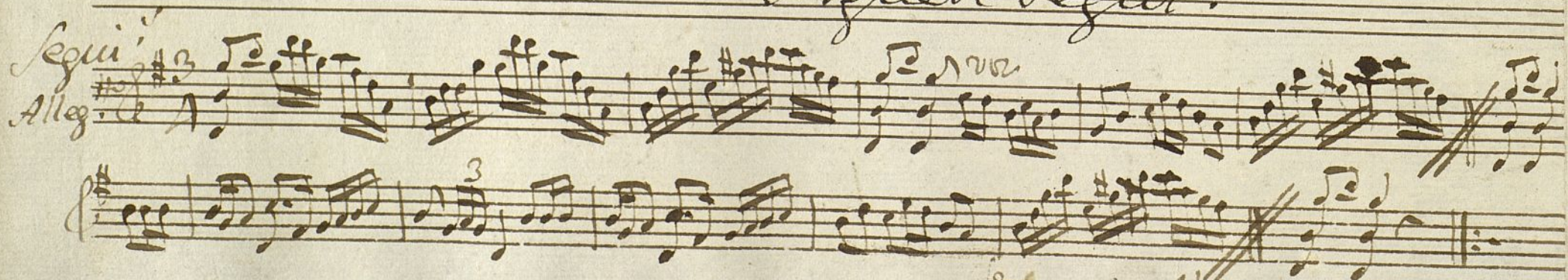
Tota G major $\frac{3}{4}$



Se Vuelve al Segno

Signen Segui.

Segui G major $\frac{3}{4}$
Alleg.



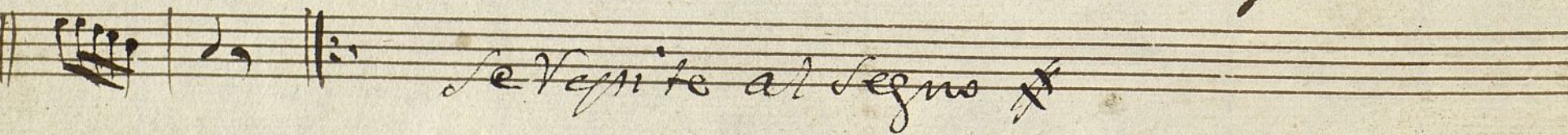
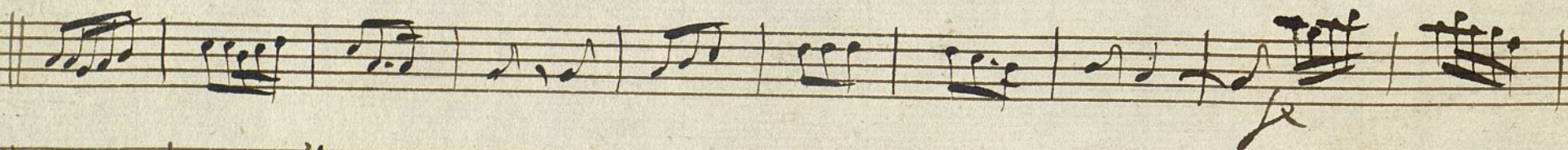
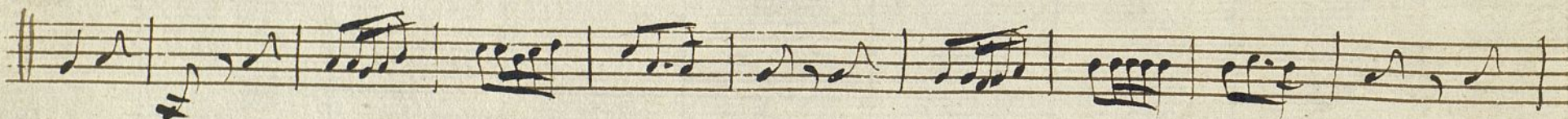
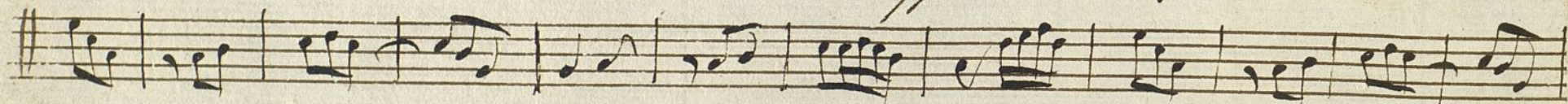
Al Segno

Violin Segundo.

+

Mus 71-46

Del Sainete: el Manchego en la Corte;



Se Vespite al Segno #

Siguen Segui.



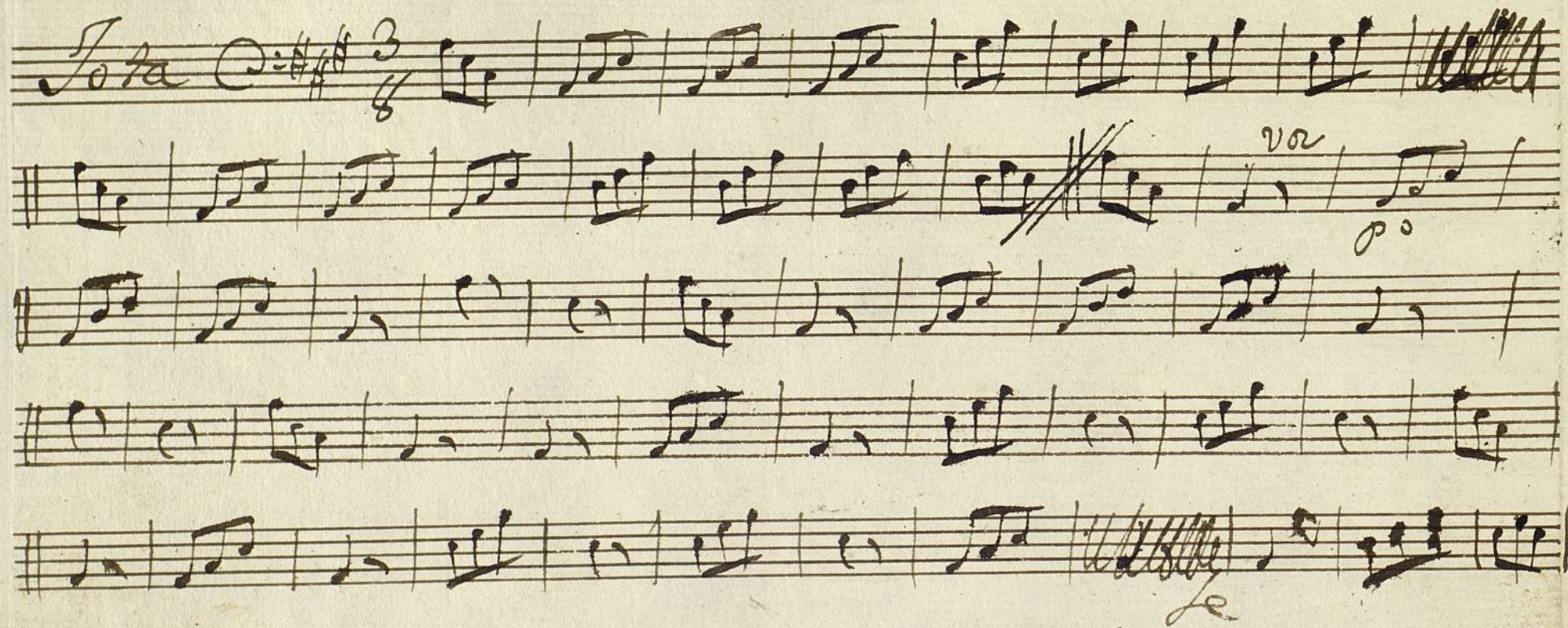
Al Segno

Contrabajo:

+

Mus 71-46

Del Sainete: el Manchego en la Corte



~~Se repite al segno~~ x

siguen Segui.

Segui.
Alleg.



Parte de Clave

Mus 71-46

Del Sagnese; el Mandiego en la Corte;

Nota $\text{C} \# \# \frac{3}{4}$

~~Nota~~ $\text{C} \# \# \frac{3}{4}$ Voz O.

Nota $\text{C} \# \# \frac{3}{4}$

Nota $\text{C} \# \# \frac{3}{4}$

Nota $\text{C} \# \# \frac{3}{4}$

Nota $\text{C} \# \# \frac{3}{4}$

Se repite al segno x

siguen Segui para Vailar