

mp  
1822  
(15)

# INTRODUCCION

Y

## GRAN JOTA ARAGONESA

CON CINCO CANTOS Y CUARENTA Y DOS VARIACIONES

PARA

Piano Forte

COMPUESTA Y DEDICADA

A D. PEDRO ALBENIZ

POR SU DISCIPULO

FLORENCIO LAHOZ.

N.º 11.



Pr. 12 r.

MADRID.

Se hallará en el almacén de LODRE carrera de S.º Gerónimo N.º 15.







75/36.220

M: (72 =  $\text{♩}$ )

Maestoso.

INTRODUCCION

*ff* *pp* *ff*

*ff* *f* *p* *pp* Ped.

*f* *p* Ped.

*ff* *ff* Ped. Ped.

8.<sup>a</sup> 8.<sup>a</sup> 8.<sup>a</sup> ritard: Ped.



49.865





M. (69 =  $\text{♩}$ )  $8^a$

ALL.<sup>o</sup>

1.<sup>a</sup> Var:

2.<sup>a</sup> Var:

3.<sup>a</sup> Var:

4.<sup>a</sup> Var:

CANCION.







10. Var:





11. Var:



12. Var:



CANTO



13. Var:

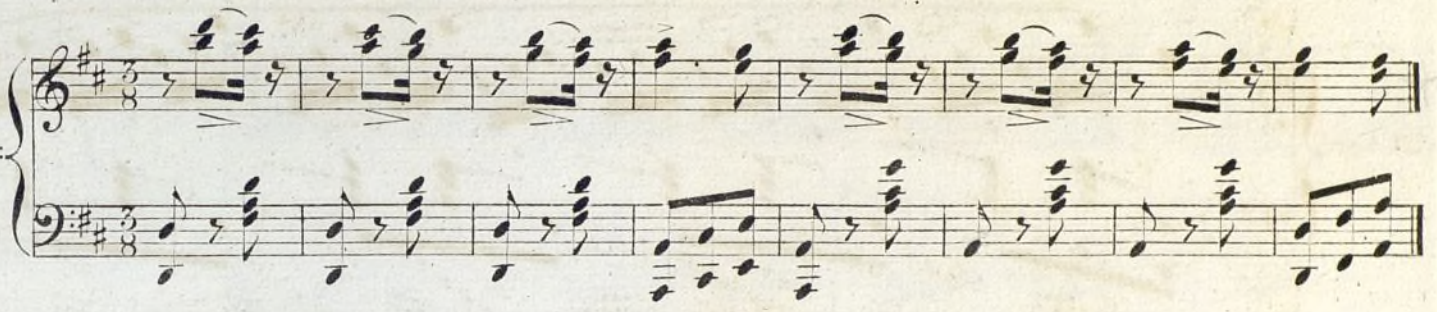




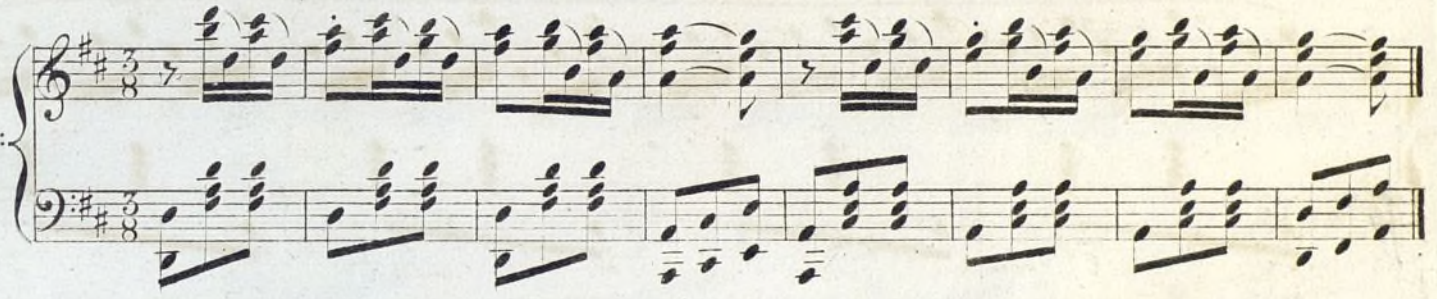
14. Var:



15. Var:



16. Var:



17. Var:



18. Var:



19. Var:

*scherzando*

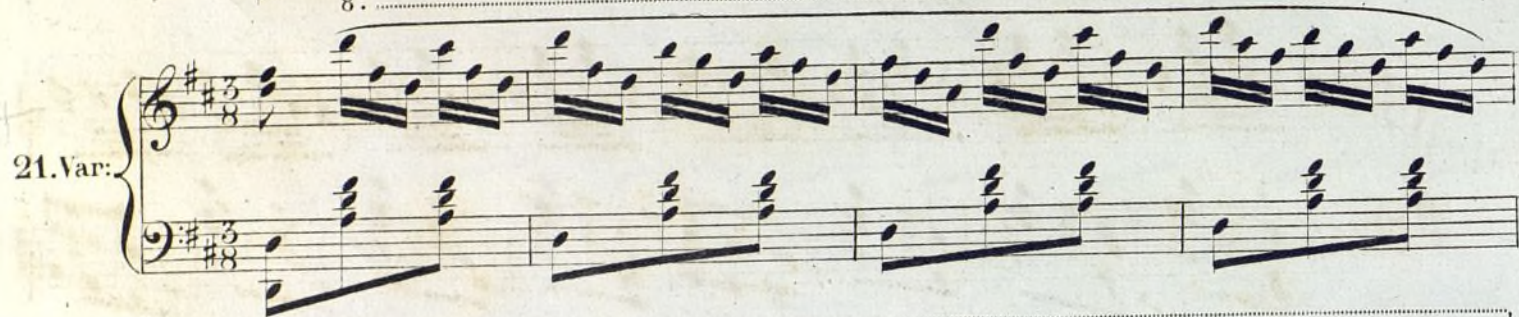




20. Var:



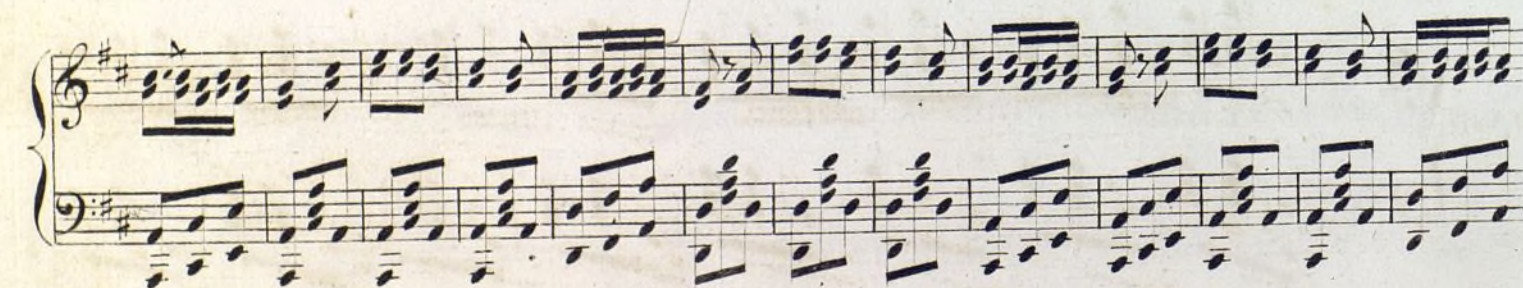
21. Var:



22. Var:



2  
CANTO





8.<sup>a</sup>

23. Var:

*pp*

Ped.

Ped.

8.<sup>a</sup>

24. Var:

Ped. *p*

Ped.

8.<sup>a</sup>

25. Var:

Ped.

Ped.

26. Var:

*pp*

Ped.

Ped.

27. Var:

Ped.

Ped.



28. Var:

*ff*  
Ped. Ped.

CANTO

*f*

29. Var:

*f*  
Ped. Ped.

30. Var:

Ped. Ped.

31. Var:

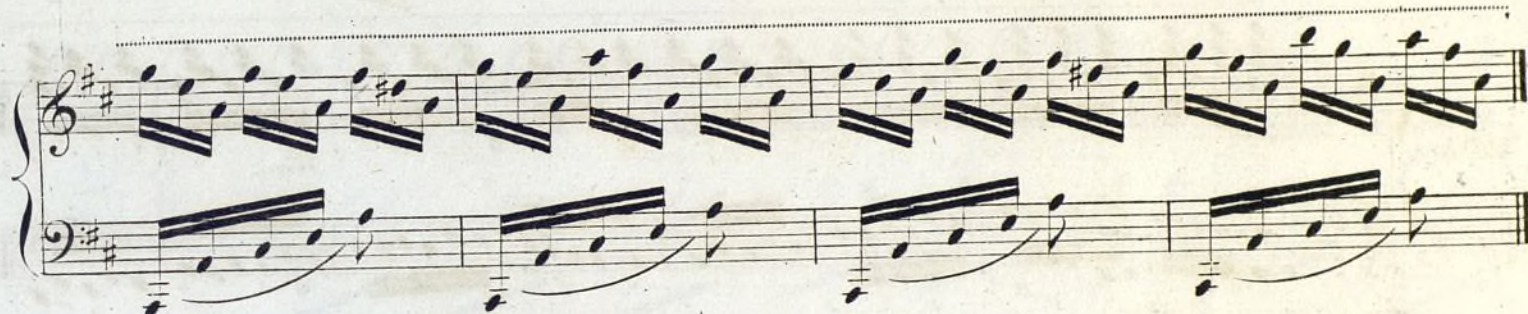
*f*



32. Var:



33. Var:



34. Var:



35. Var:





36. Var:

8<sup>a</sup>



37. Var:

8<sup>a</sup>



38. Var:

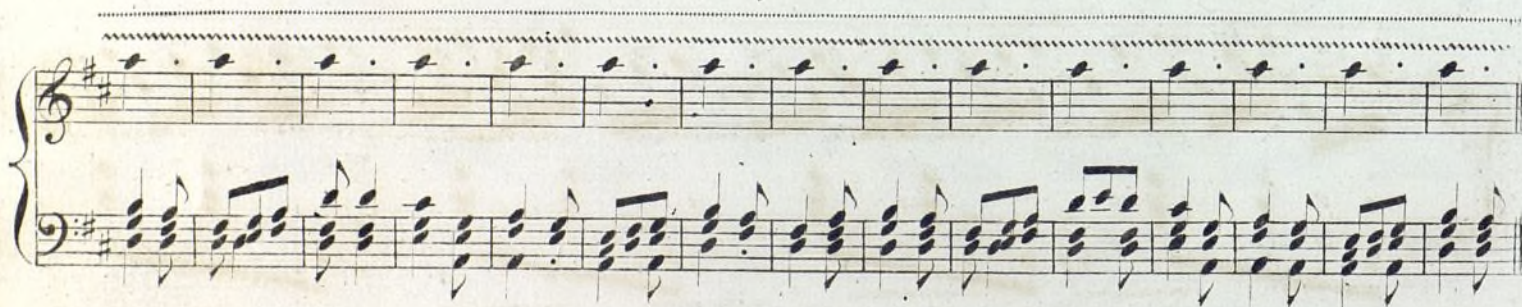
8<sup>a</sup>



CANTO

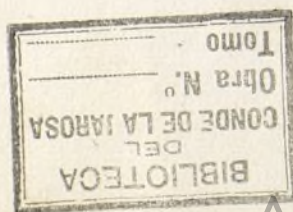
8<sup>a</sup> tr

*p*



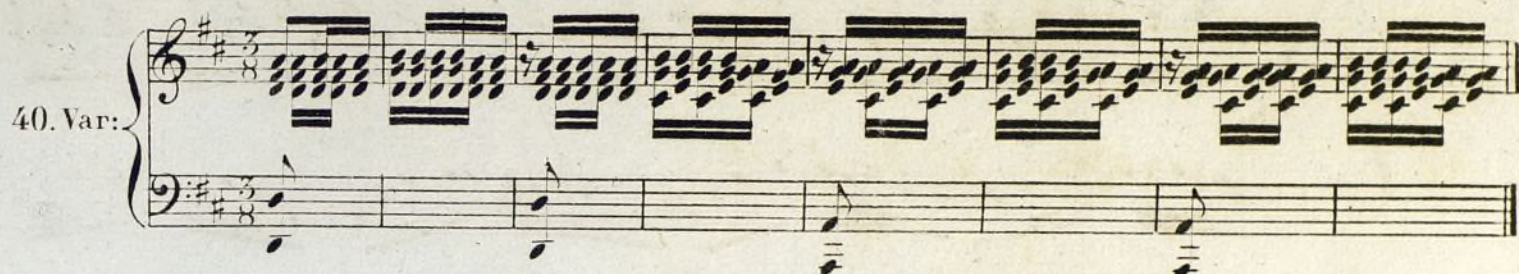
39. Var:

Ped.





40. Var:



41. Var:

8<sup>a</sup>

*f*



42. Var:

y

CODA.


più mosso

*ff*



e benmarcato il basso.

Ped. ♪ Ped. ♪



Ped. ♪ Ped. ♪

