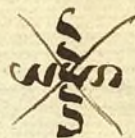


N.º 15.

mus 627-28

1 2



Bajo

Cachucha - numero 1.

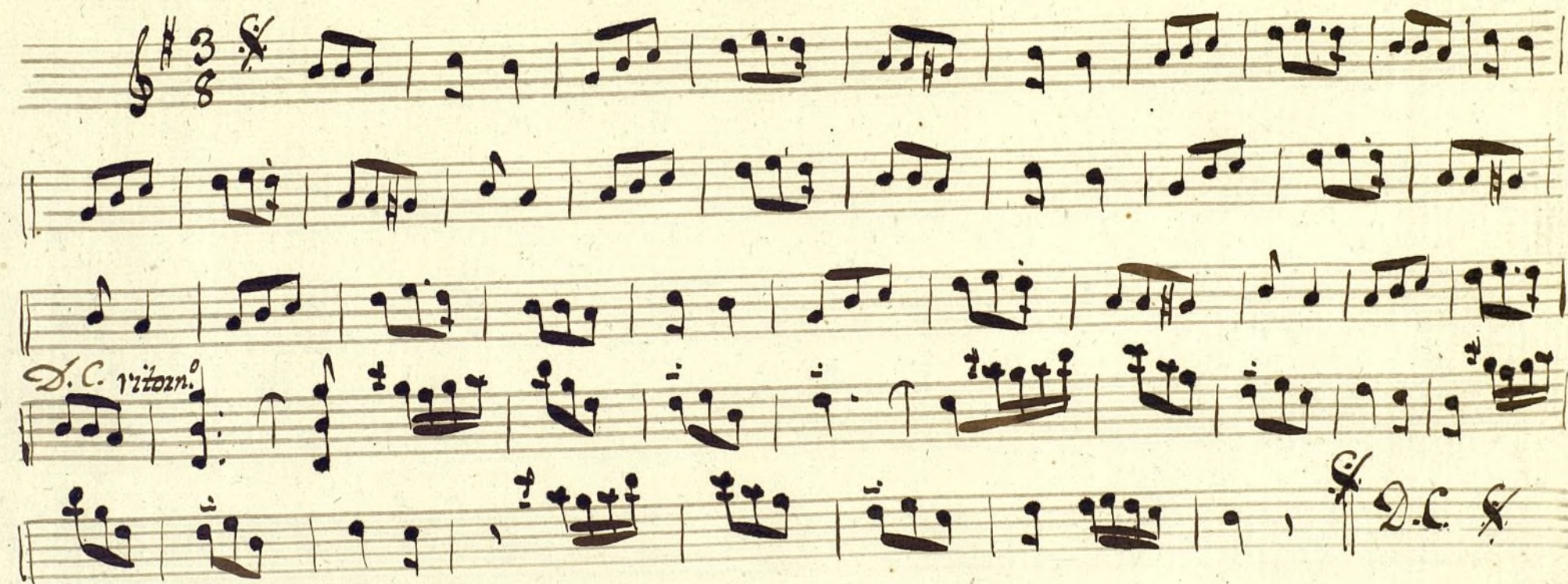
Con Acomp.<sup>to</sup> de Toda Orquesta

El M. d. d.

228

Ayuntamiento de Madrid



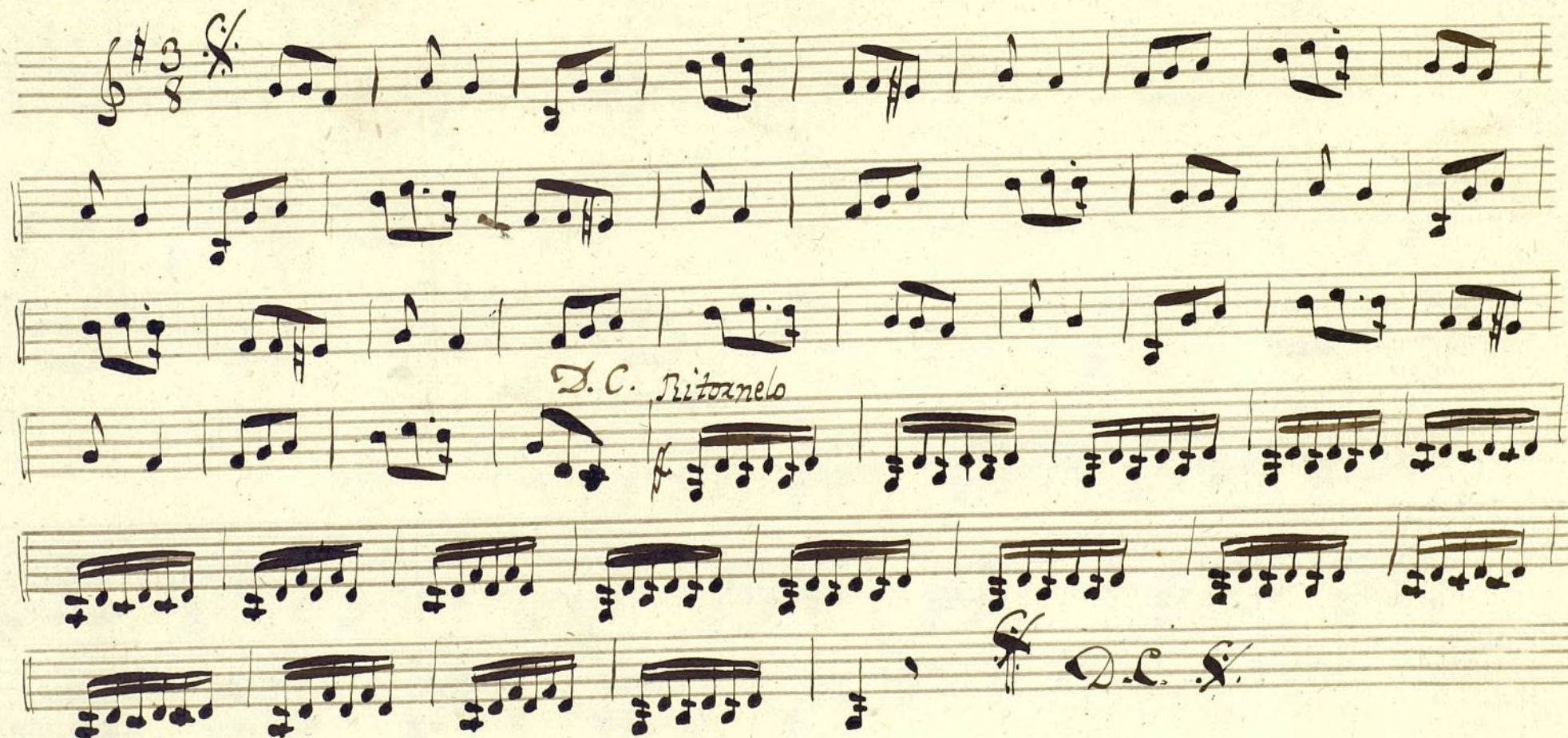
*Violin I.º Cachuca*



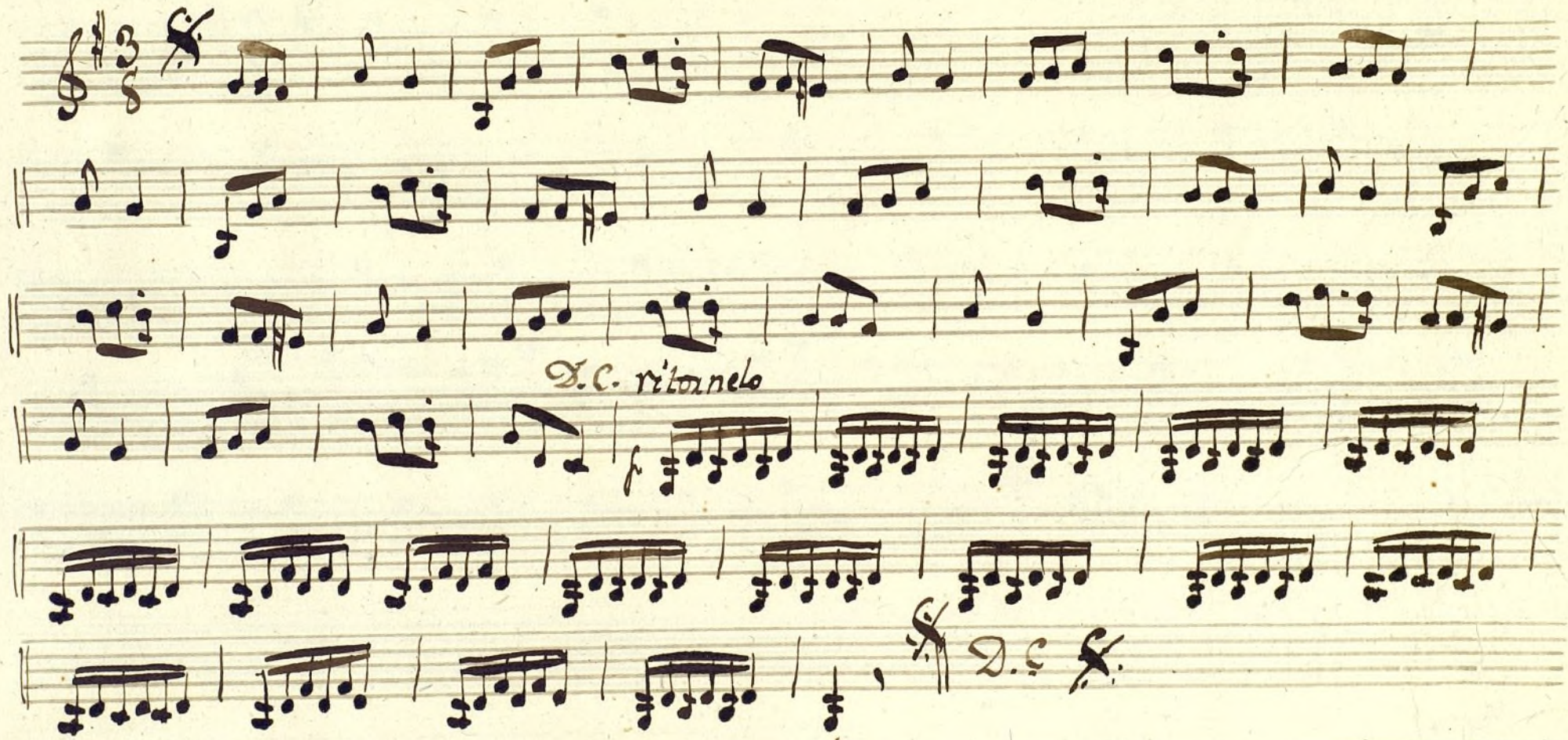
*Violin 1<sup>o</sup> Cachucha*



## Violin 2 Cachucha





*Violin 2.º Cachucha*

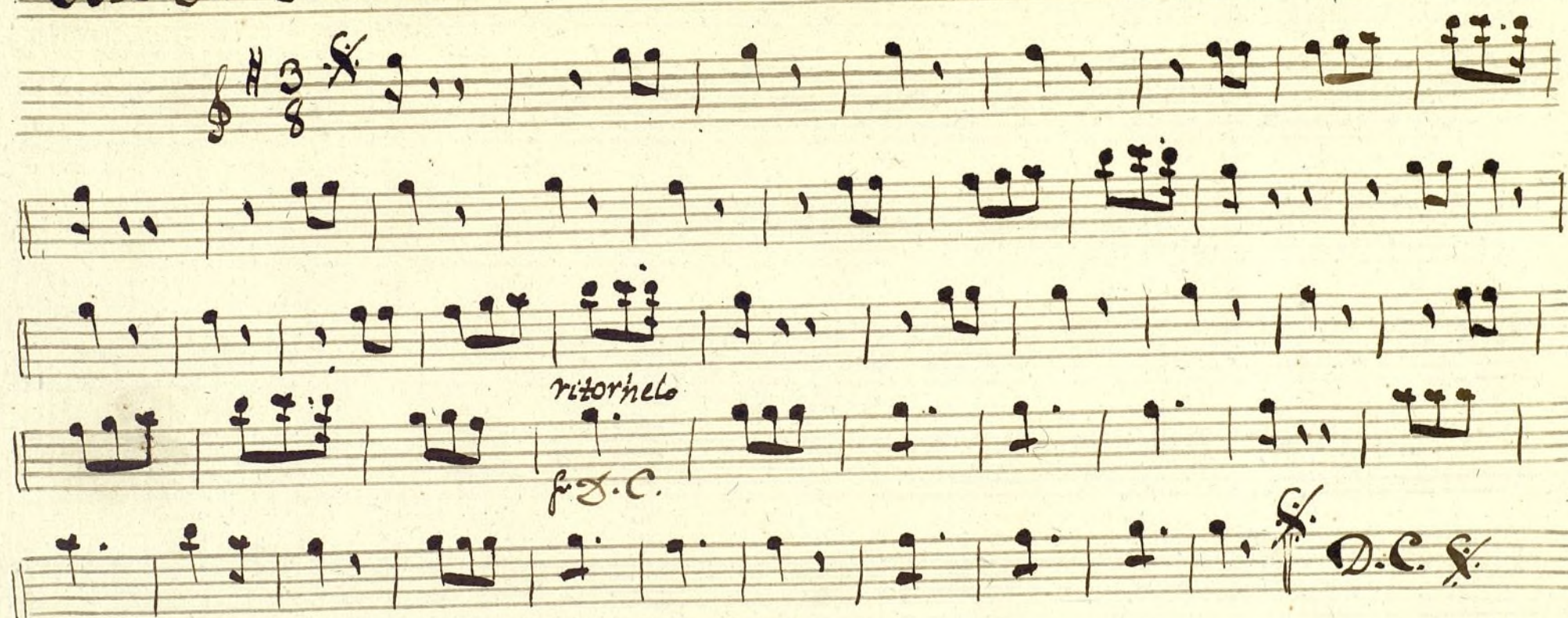


*Viola Cachucha*

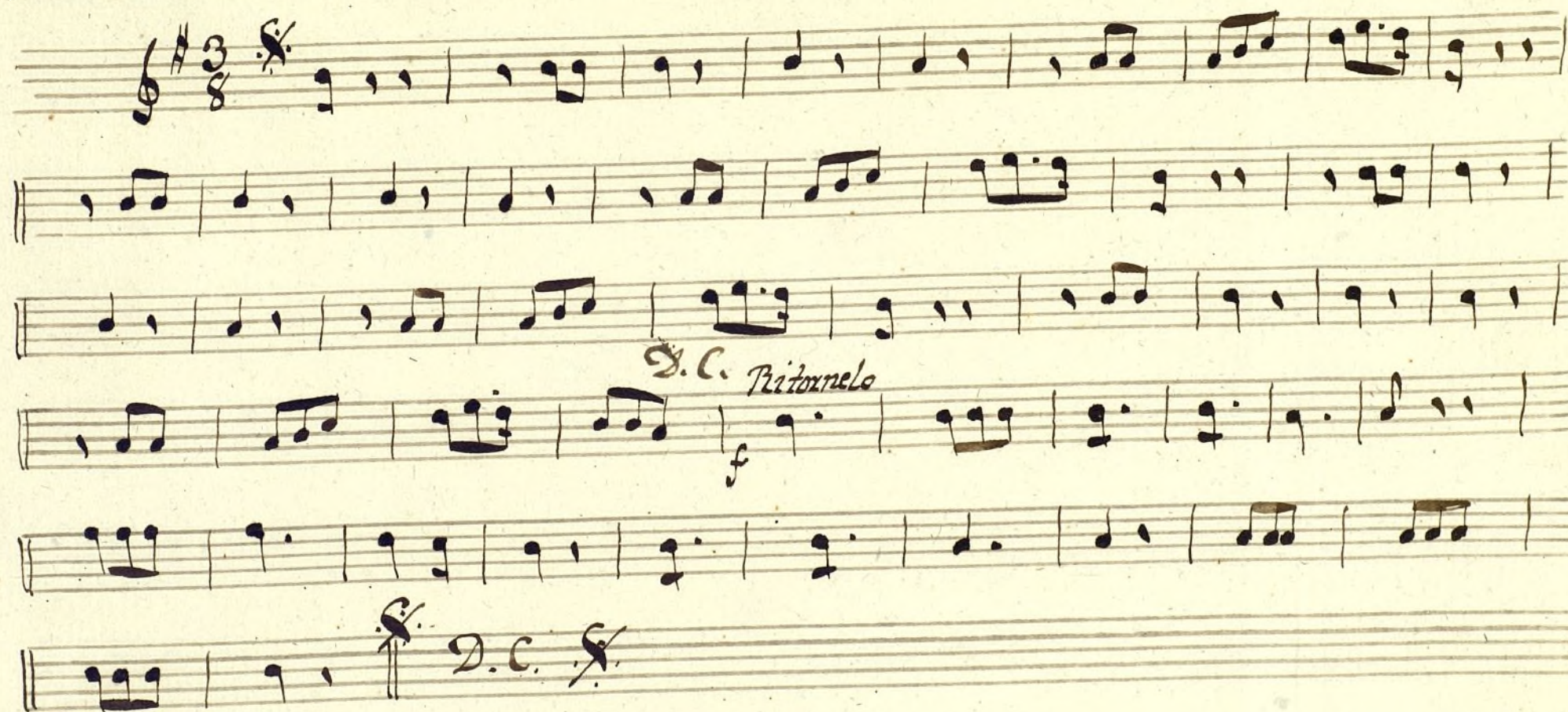
Handwritten musical score for Viola Cachucha, measures 1-10. The notation is on five staves. The first staff begins with a treble clef, a key signature of one sharp (F#), and a 3/8 time signature. The music consists of eighth and sixteenth notes. The fourth staff contains the annotation "D.C. Ritornelo" above the staff and a forte "f" dynamic marking below it. The fifth staff ends with a double bar line, a repeat sign, and the annotation "D.C." above the staff.



## Oboe 1.º Cachucha



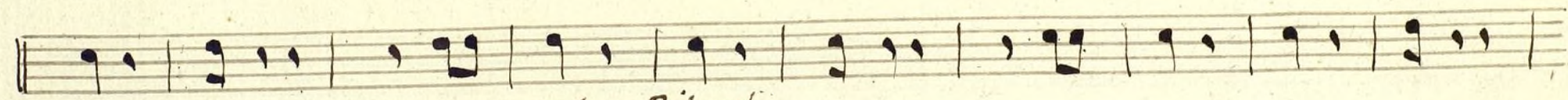
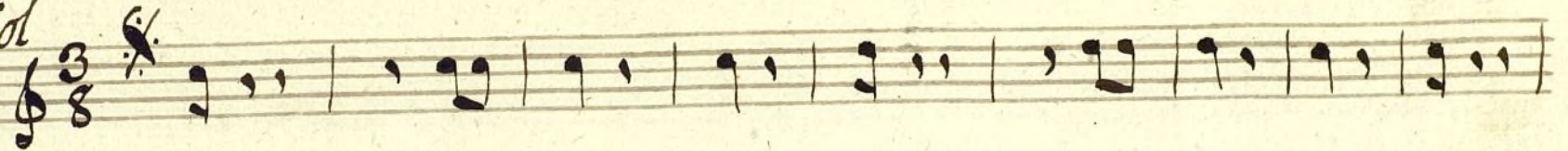


Oboe 2<sup>o</sup> *cachucha*

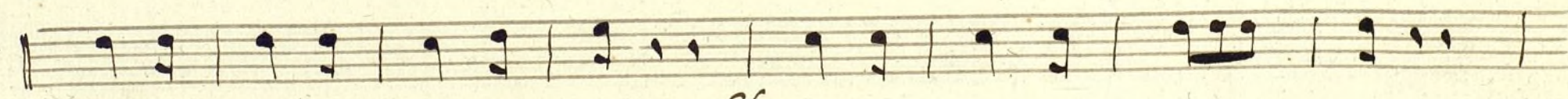
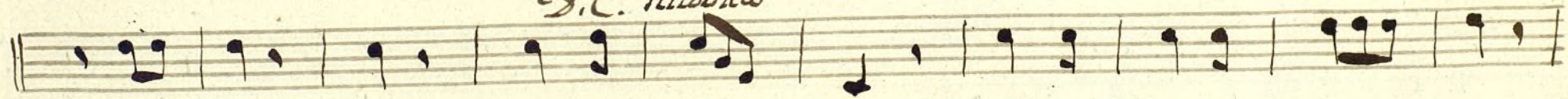


*Trompa 1.<sup>a</sup> Cachucha*

*In Sol*



*D.C. Ritornelo*





Trompa 2.<sup>a</sup> Cachucha

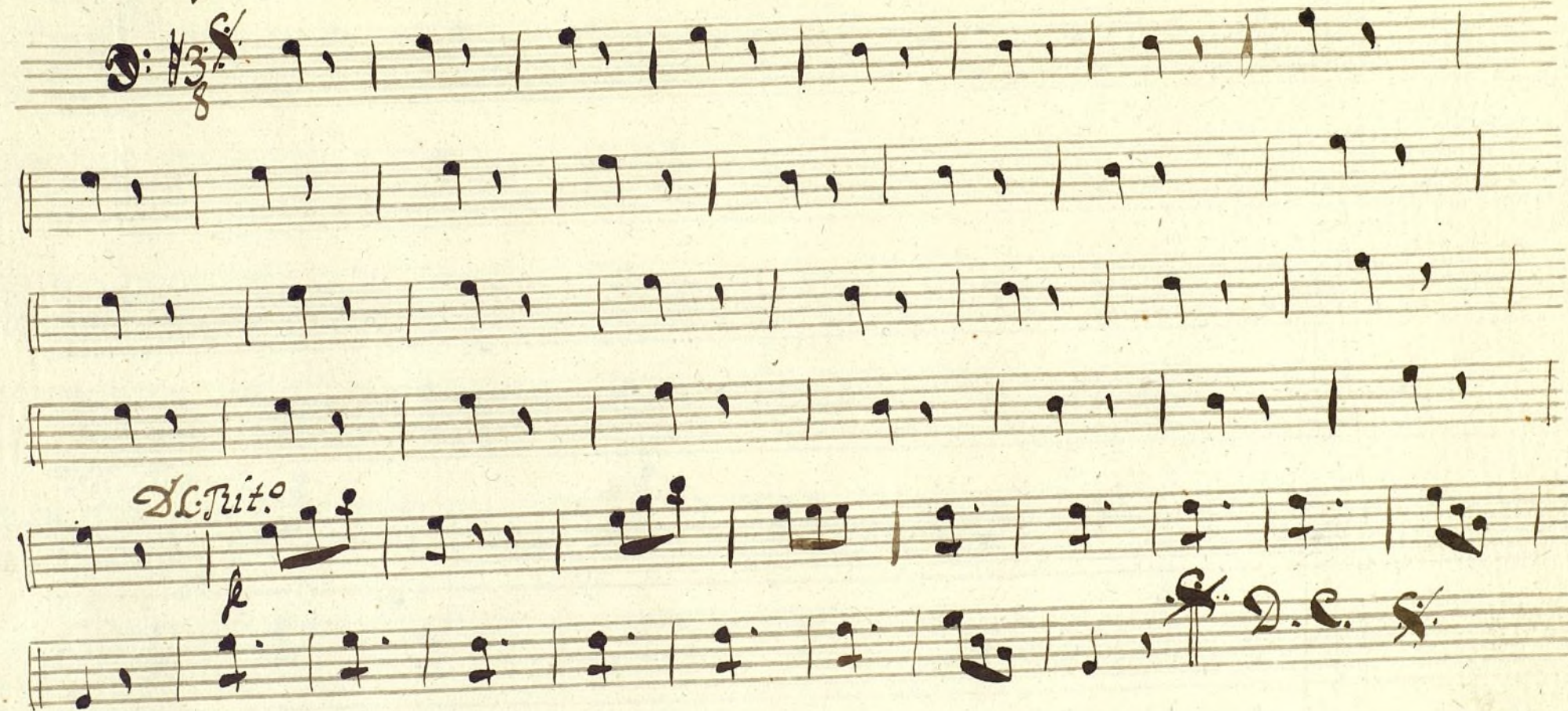
*In sol*

*D.C. Ritornelo*

*D.C.*



## Bajo Cachucha





Handwritten musical score on six staves. The first staff begins with a treble clef, a key signature of one sharp (F#), and a 2/4 time signature. The notation consists of eighth and sixteenth notes across the first four staves. The fifth staff is marked "D.C. Ritorn." and features some notes with horizontal lines through them. The sixth staff ends with a double bar line, a repeat sign, and the initials "D.C."