

Leg.<sup>o</sup> N.<sup>o</sup> 22

MUS 72-10 1

Leg.<sup>o</sup> 1.<sup>o</sup> n.<sup>o</sup> 4

+

Conadilla

A Solo

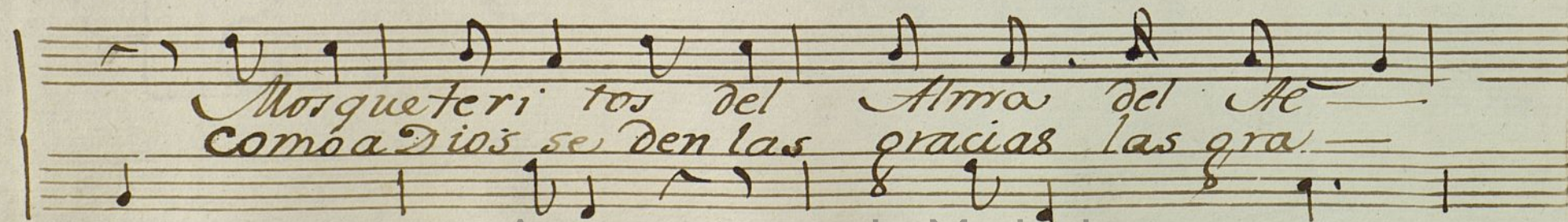
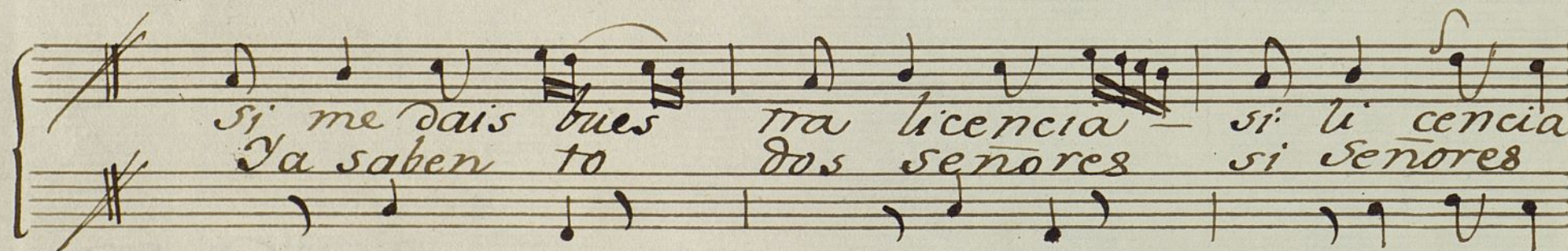
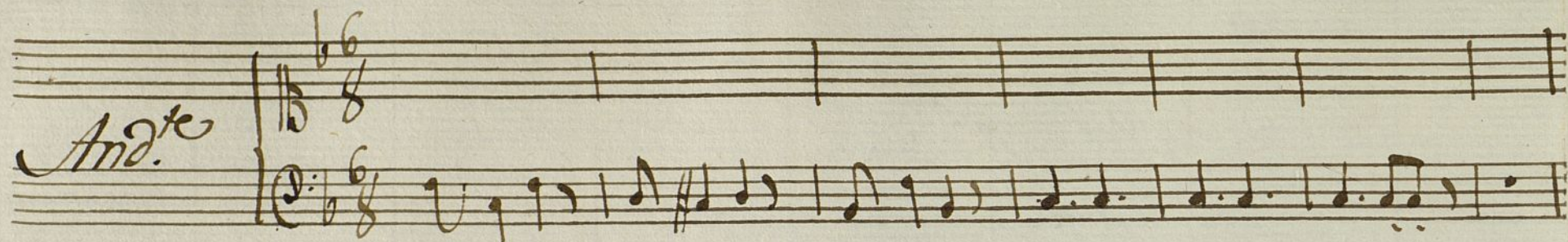
Para la S.<sup>ra</sup> Joaquina

L

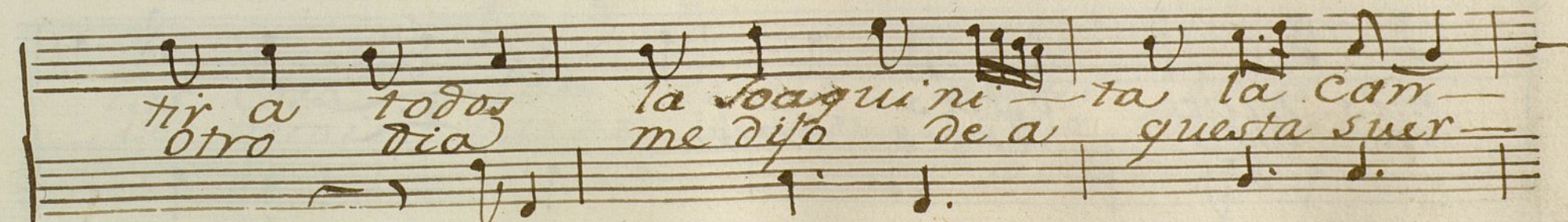
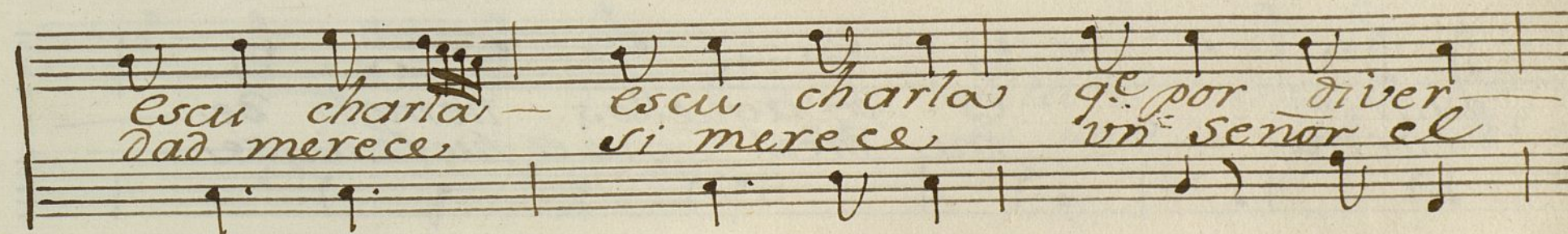
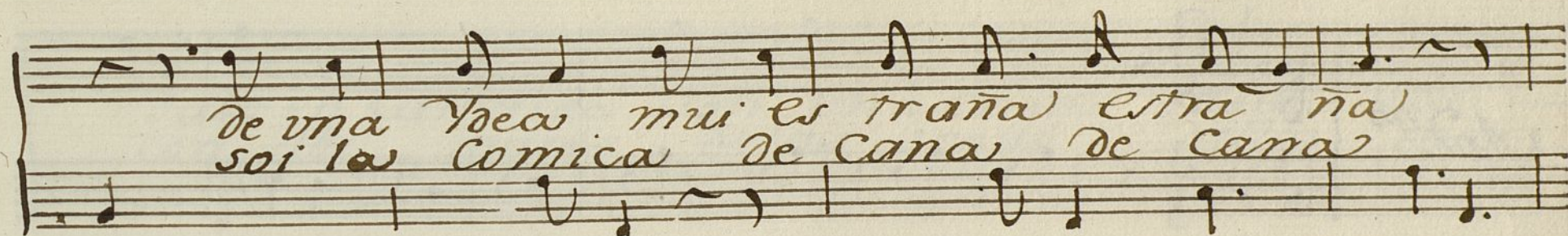
Si me dais vuestra blanca-morquetito del alma

72-10

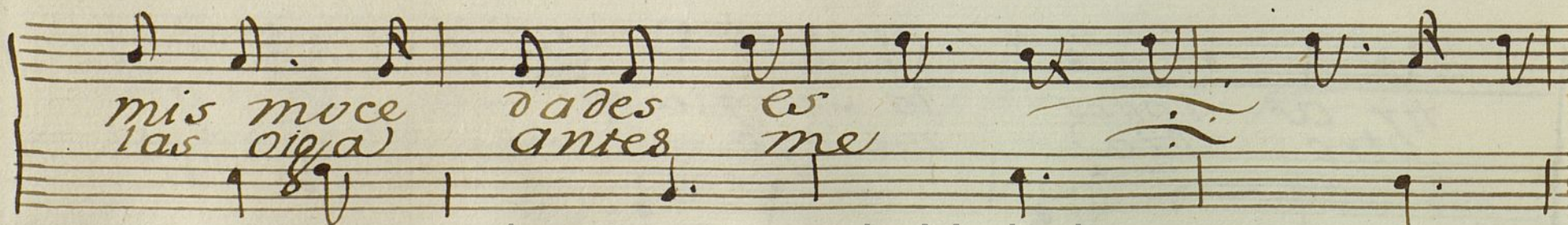
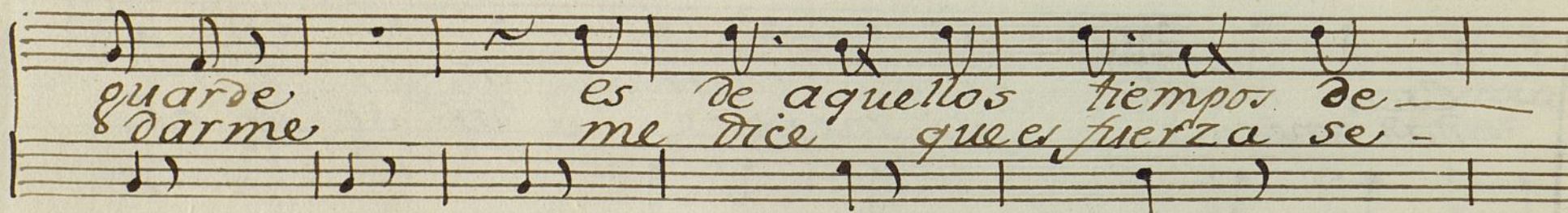
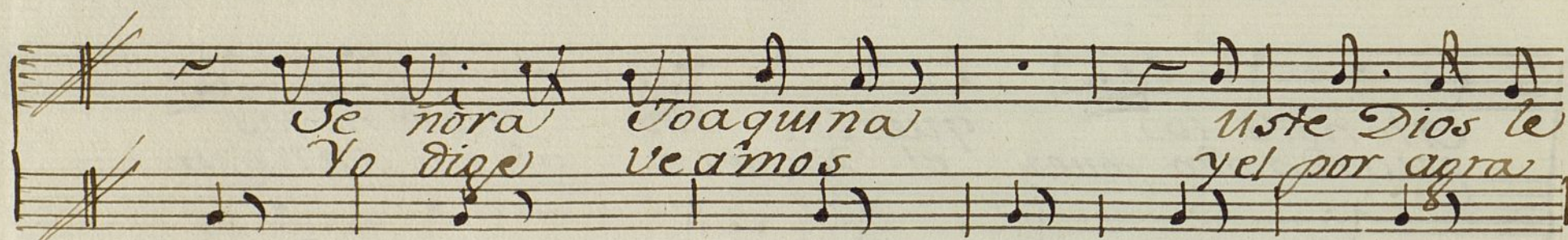
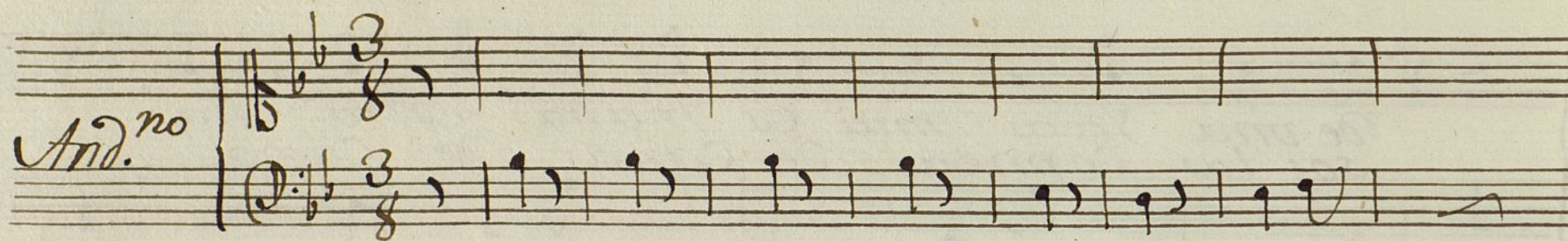
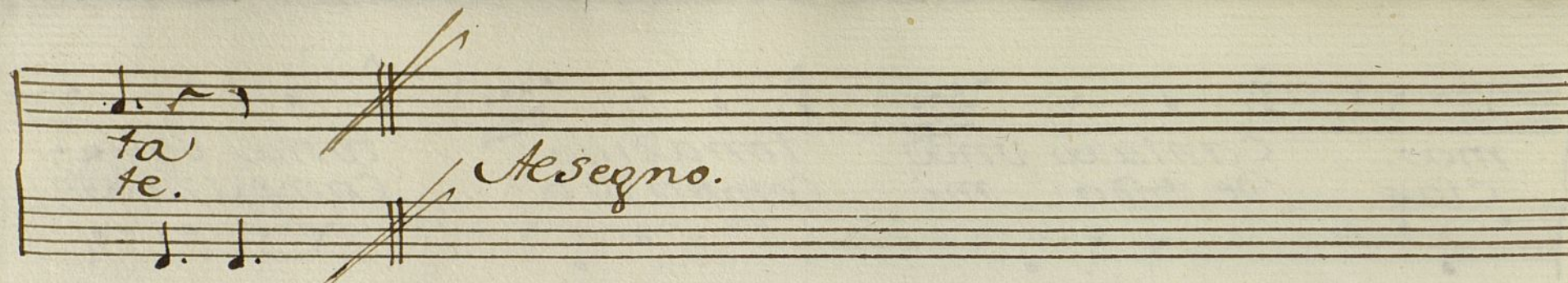




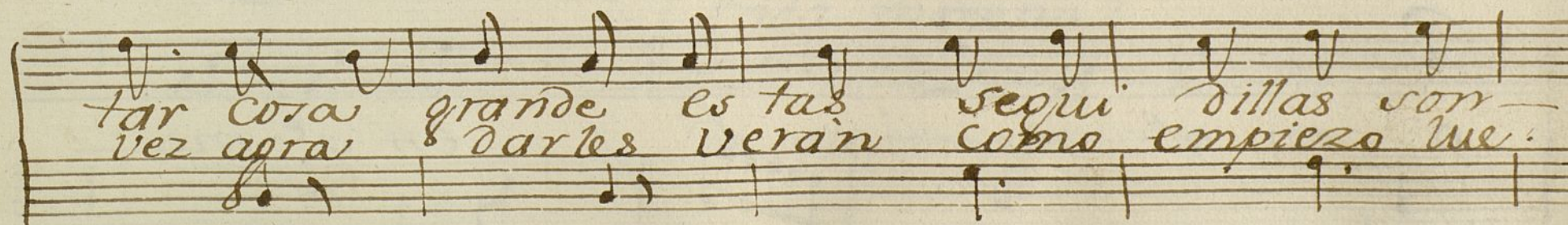
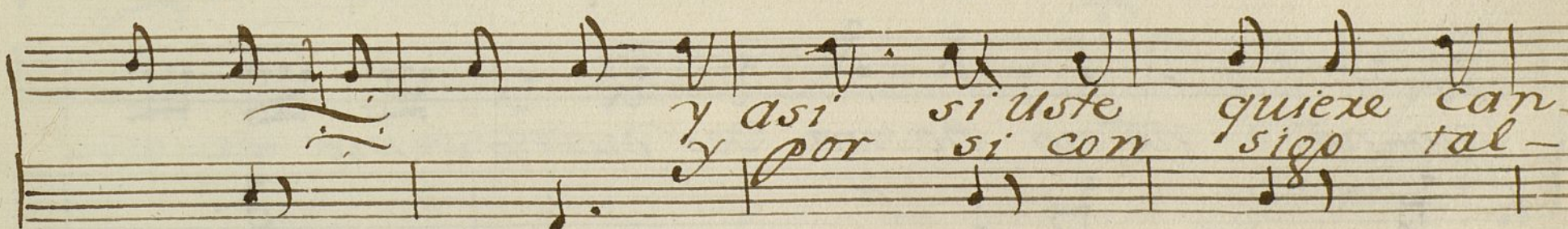
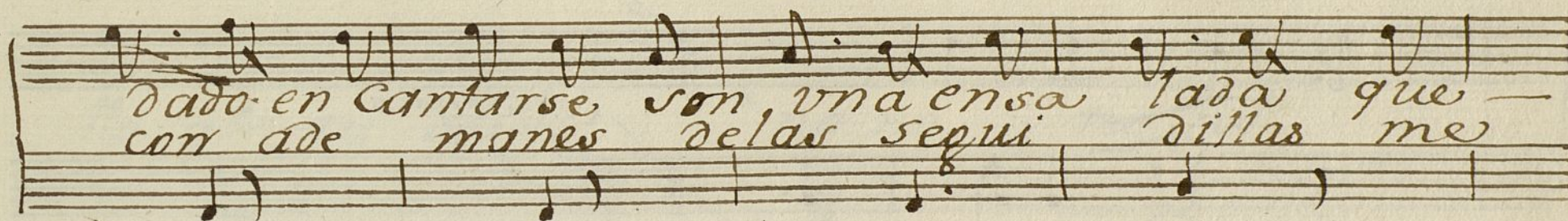
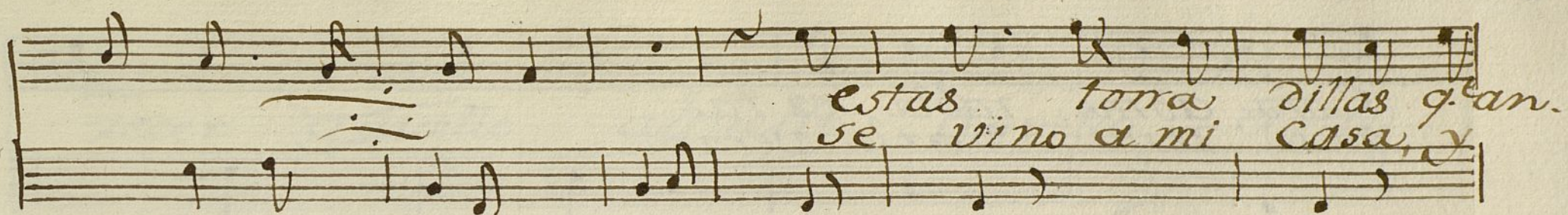




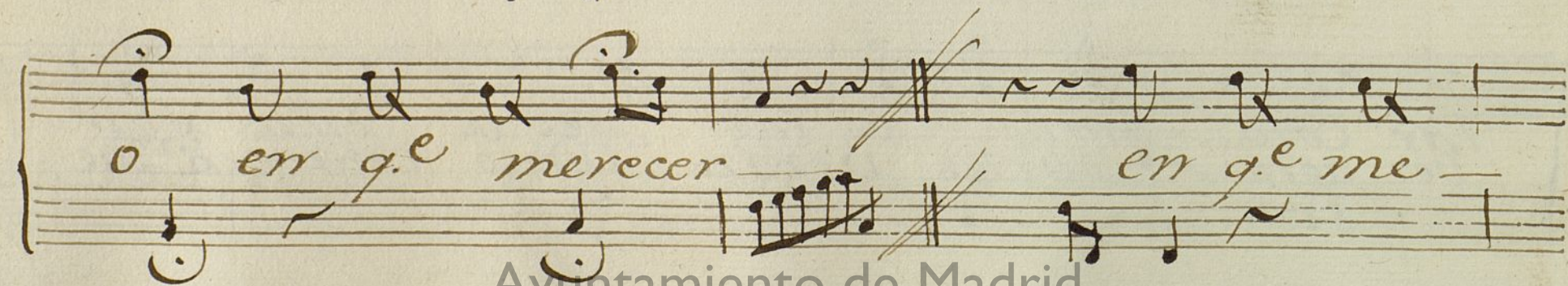
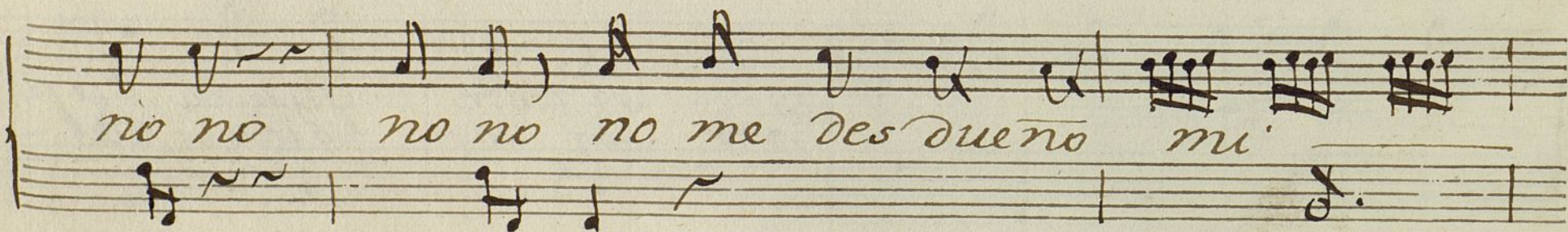
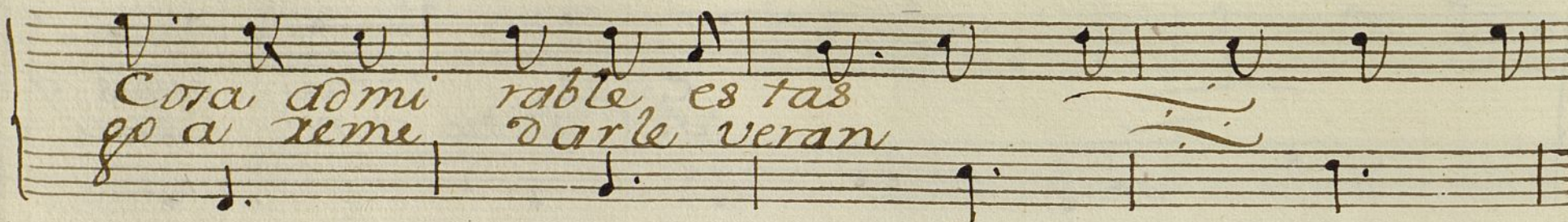




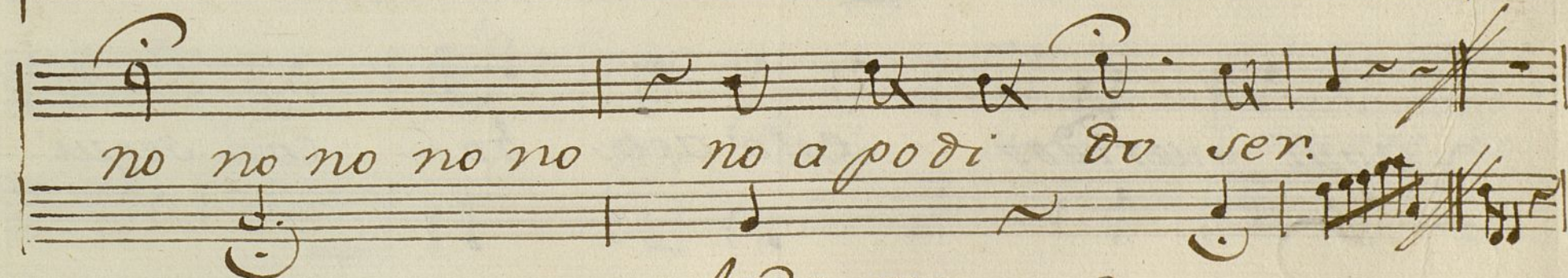
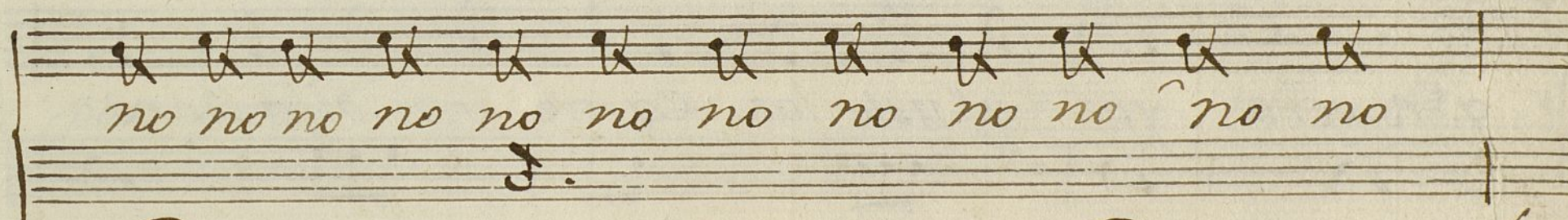
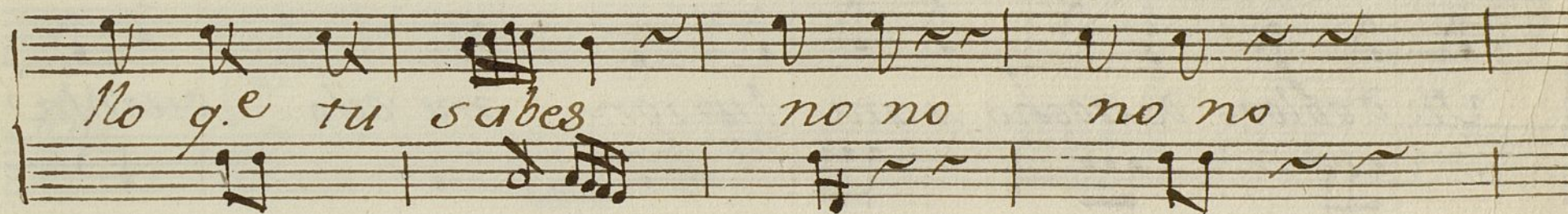






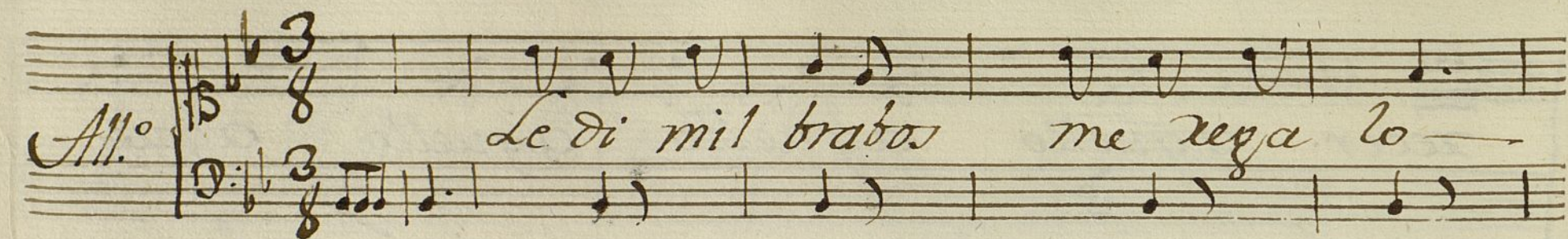





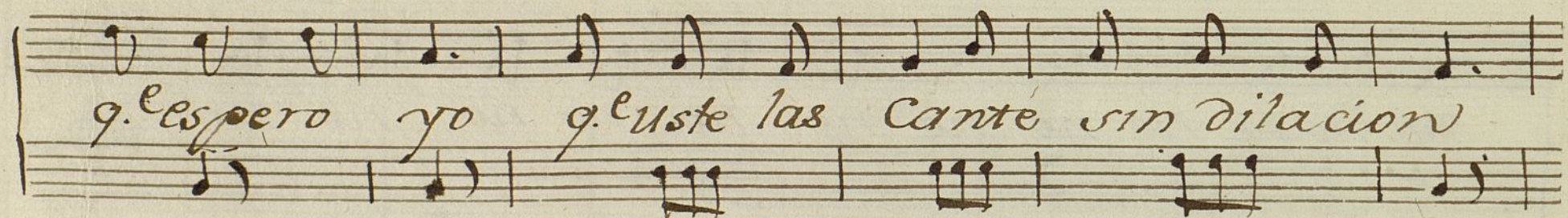


Anda morena  
que tienes una cara  
de quita penas.



*All.<sup>o</sup>*  *Le di mil brabos me rega lo —*

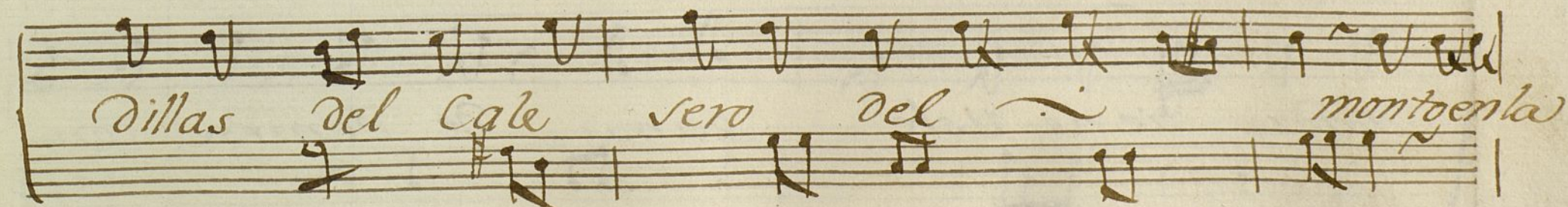
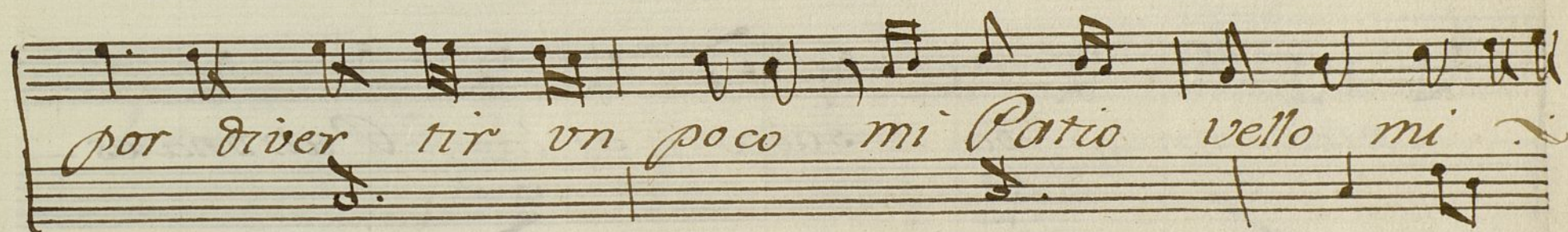
 *un doblon de ocho para turrón me dijo cuenta*

 *q. espero yo q. uste las cante sin dilacion*

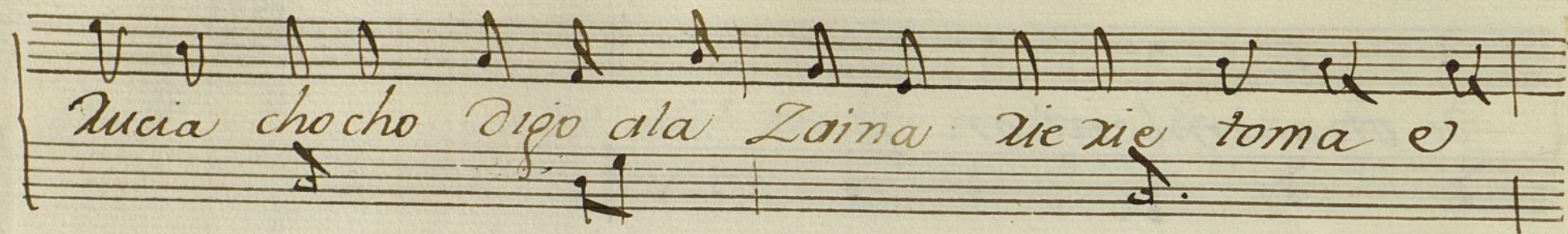
 *y aqui queridos esto aca bo — con sequi*

 *Dillas de otra imbencion de otra imbencion*

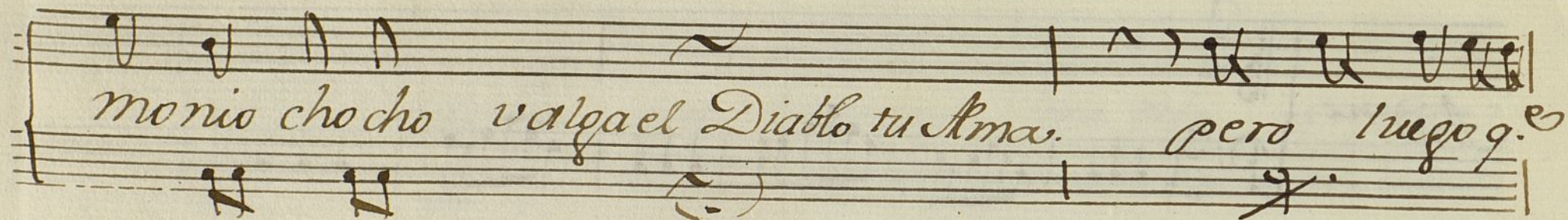








Lucia chocho digo ala Zaina xie xie toma e



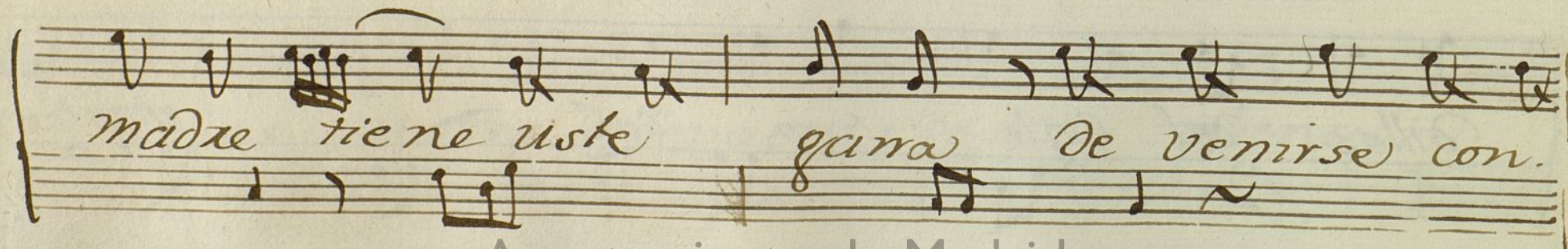
monio chocho valga el Diablo tu Alma. pero luego q.



entro en la posada si la Patrona es

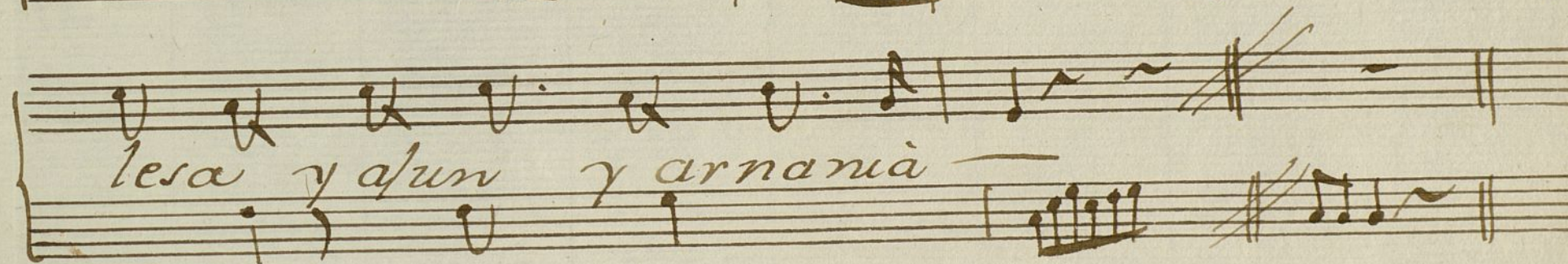


chusca digo con gracia a que ojea co-



madre tiene uste gana de venirse con.



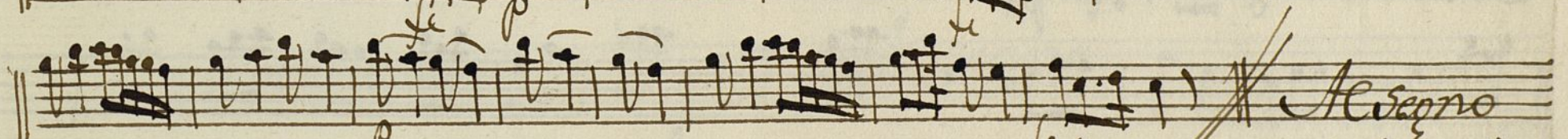
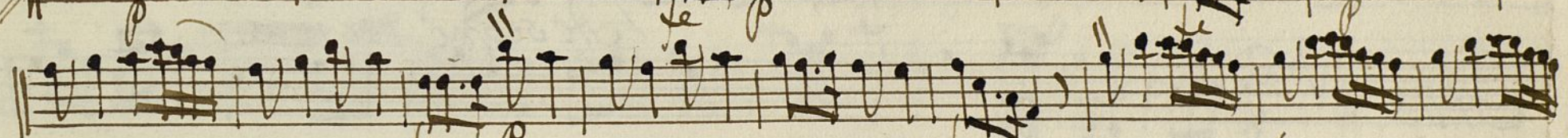


Anda moreno  
 que son mi churros todos  
 los Calereros.



Ayuntamiento de Madrid



Violin 1.<sup>o</sup> Ton.<sup>a</sup> a Solo.



Handwritten musical score on aged paper, featuring multiple staves of music. The notation includes various musical symbols such as notes, rests, and dynamic markings like *And.*, *All.*, and *Adesegno*. The score is organized into systems, with some staves crossed out or marked with a large 'X'. The handwriting is in a historical style, likely from the 18th or 19th century.

*And.* *All.* *Adesegno*

Ayuntamiento de Madrid





*Allegro.*

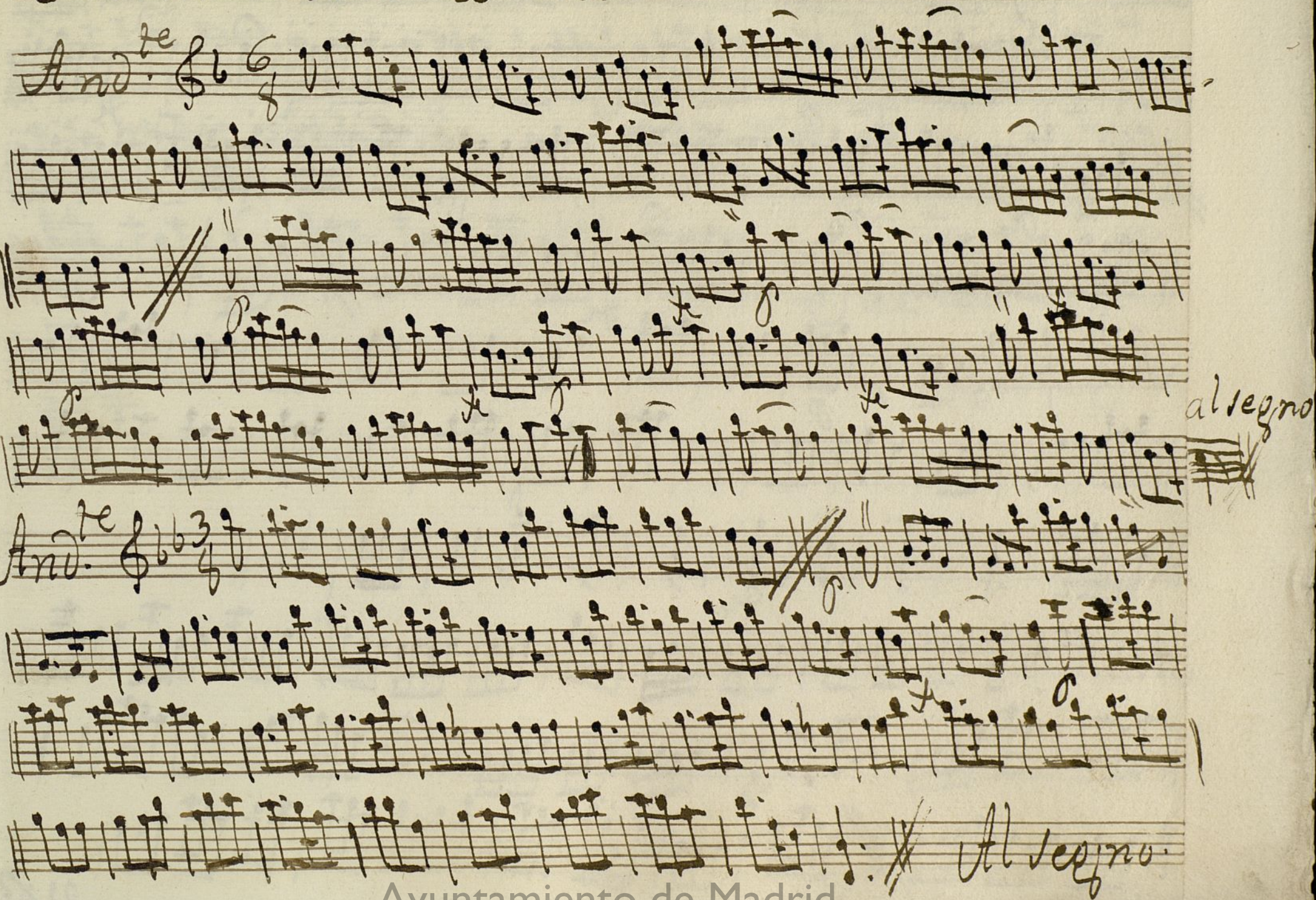


Ayuntamiento de Madrid



Violin V. Tona. a Solo <sup>7</sup>

Mus 22-10 1

*And.<sup>te</sup>* 

*allegro*

*Allegro*



*And.<sup>te</sup>*  $\text{G}\flat 3/4$

*al segno -  
vor may.*

*All.<sup>o</sup>*  $\text{G}\flat 3/4$

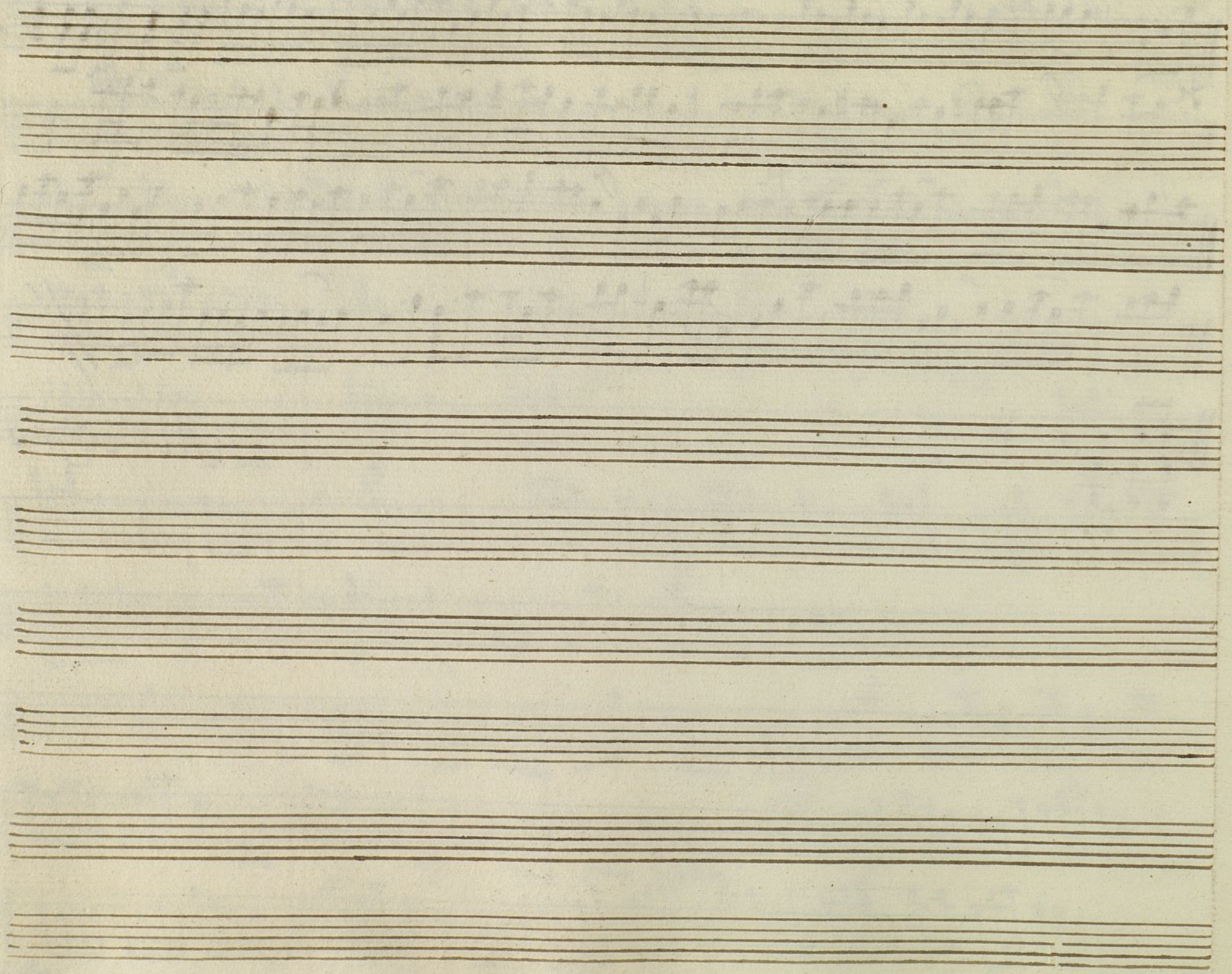
*And.<sup>no</sup>*  $\text{G}\flat 3/4$

*u?*









Ayuntamiento de Madrid



Violin 2 Ton<sup>a</sup> Solo

7

Mus 72-10 1

And<sup>te</sup> 6/8

Allegro



*And<sup>te</sup>* 6/3

*allegro*

*All<sup>o</sup>* 6/3

*And<sup>no</sup>* 6/3



Handwritten musical score on five staves. The notation includes treble clefs, a key signature of one sharp (F#), and a 6/8 time signature. The music consists of dense, rapid sixteenth-note passages. Above the first staff, the number '6' is written three times. The fourth staff ends with a double bar line and a repeat sign. The fifth staff begins with a few notes and ends with a double bar line. The manuscript is written in brown ink on aged, slightly discolored paper.

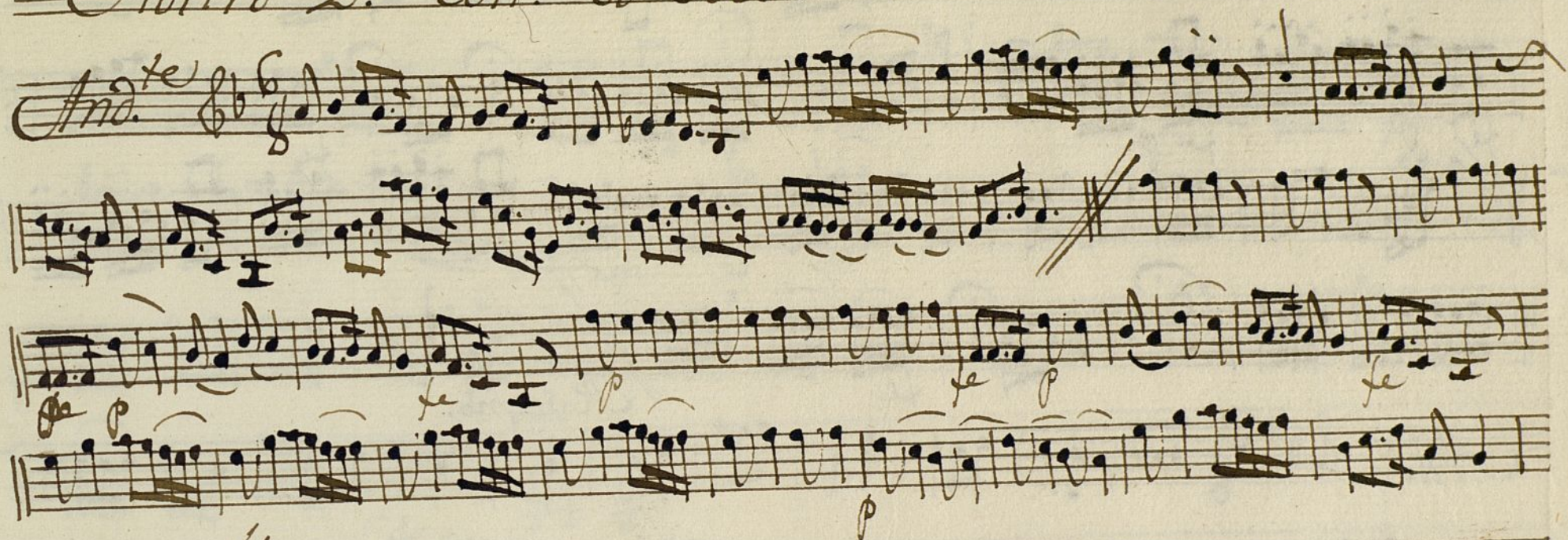
*Allegro.*



Ayuntamiento de Madrid



Violin 2.<sup>o</sup> Ton.<sup>a</sup> a Solo.



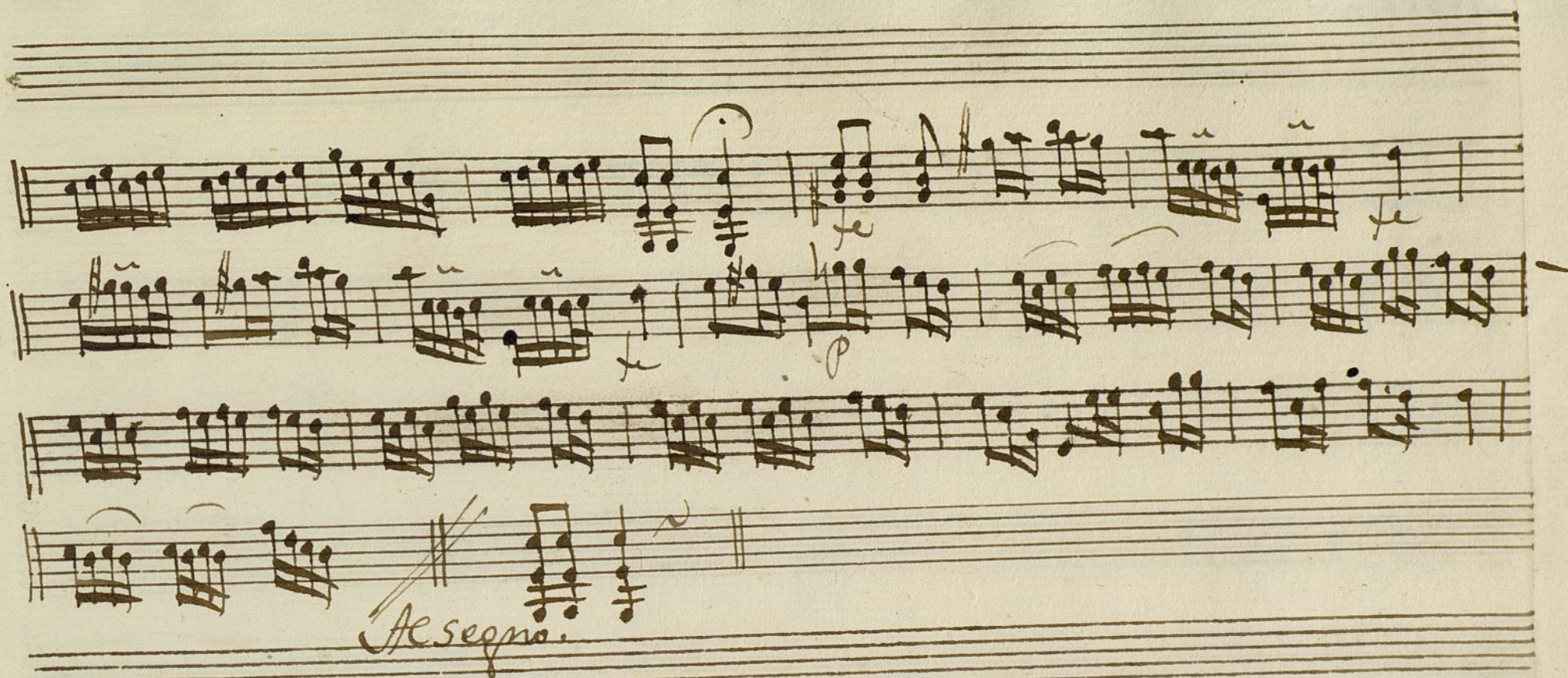
*Allegro.*











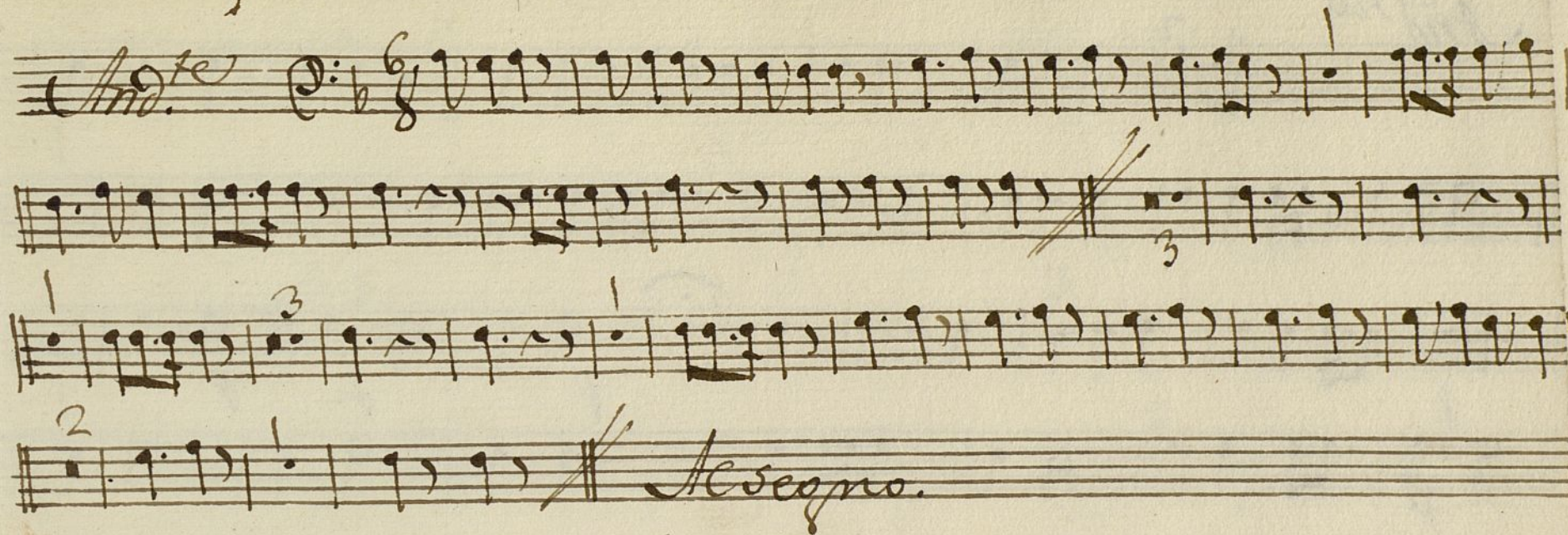




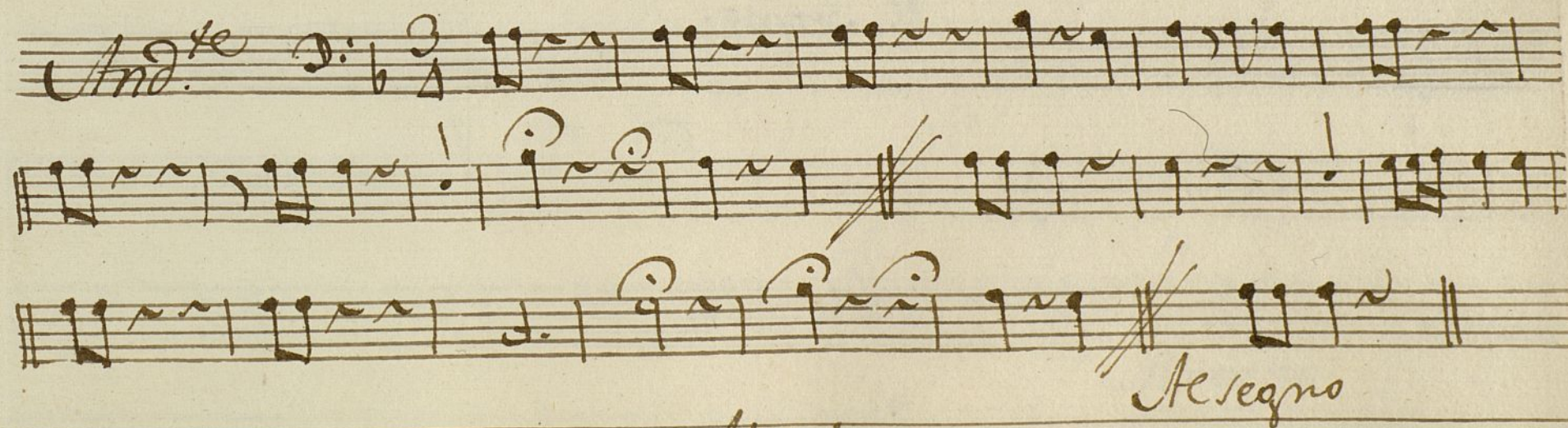
Ayuntamiento de Madrid



*Trompa 1ª Ton. a Solo.*



*And. no Tacet*



*All.º tace*



*And<sup>no</sup>*

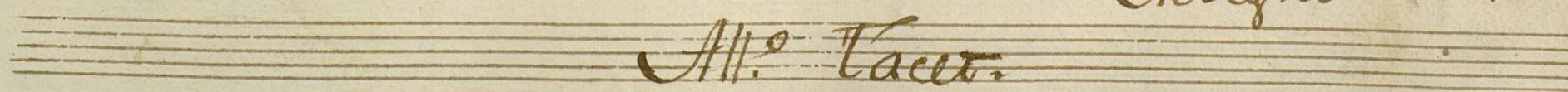
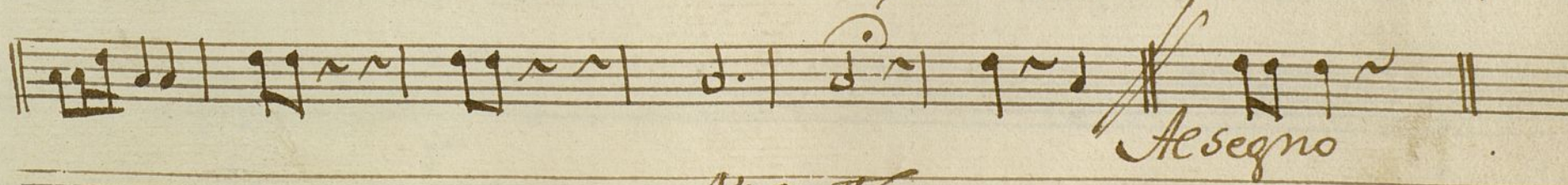
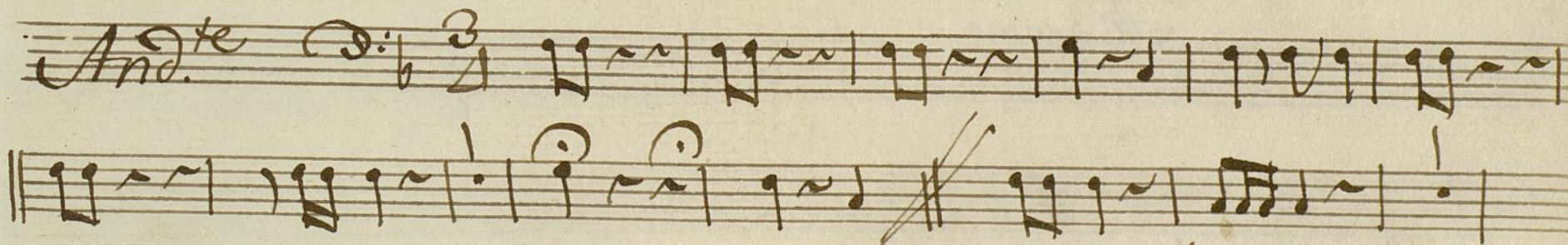
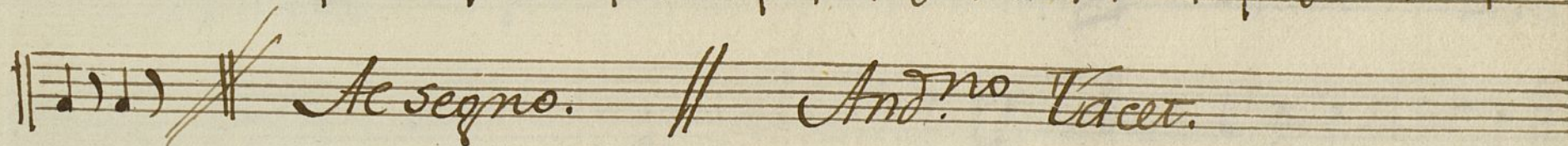
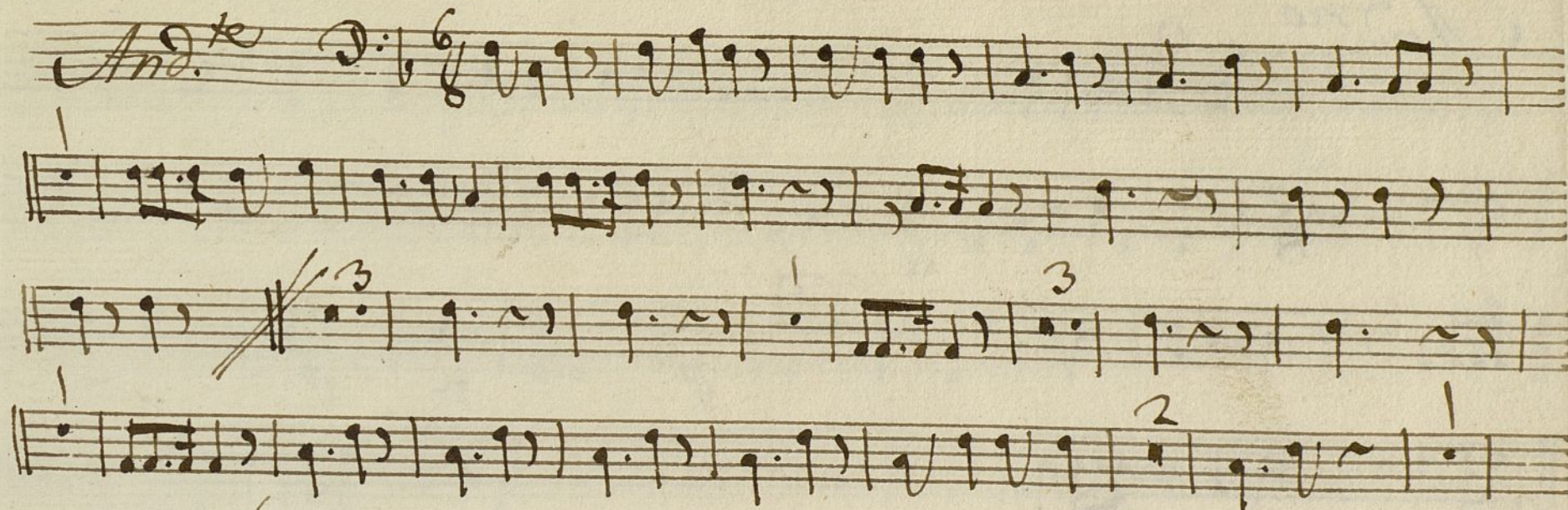
Handwritten musical score for a piece marked *And<sup>no</sup>*. The score consists of five staves. The first staff begins with a treble clef, a key signature of one flat (B-flat), and a 3/4 time signature. The notation includes various note values (quarter, eighth, and sixteenth notes), rests, and accidentals. There are dynamic markings *p* (piano) and *f* (forte) on the fourth staff. The piece concludes with a double bar line and repeat dots on the fifth staff.

*Al segno.*

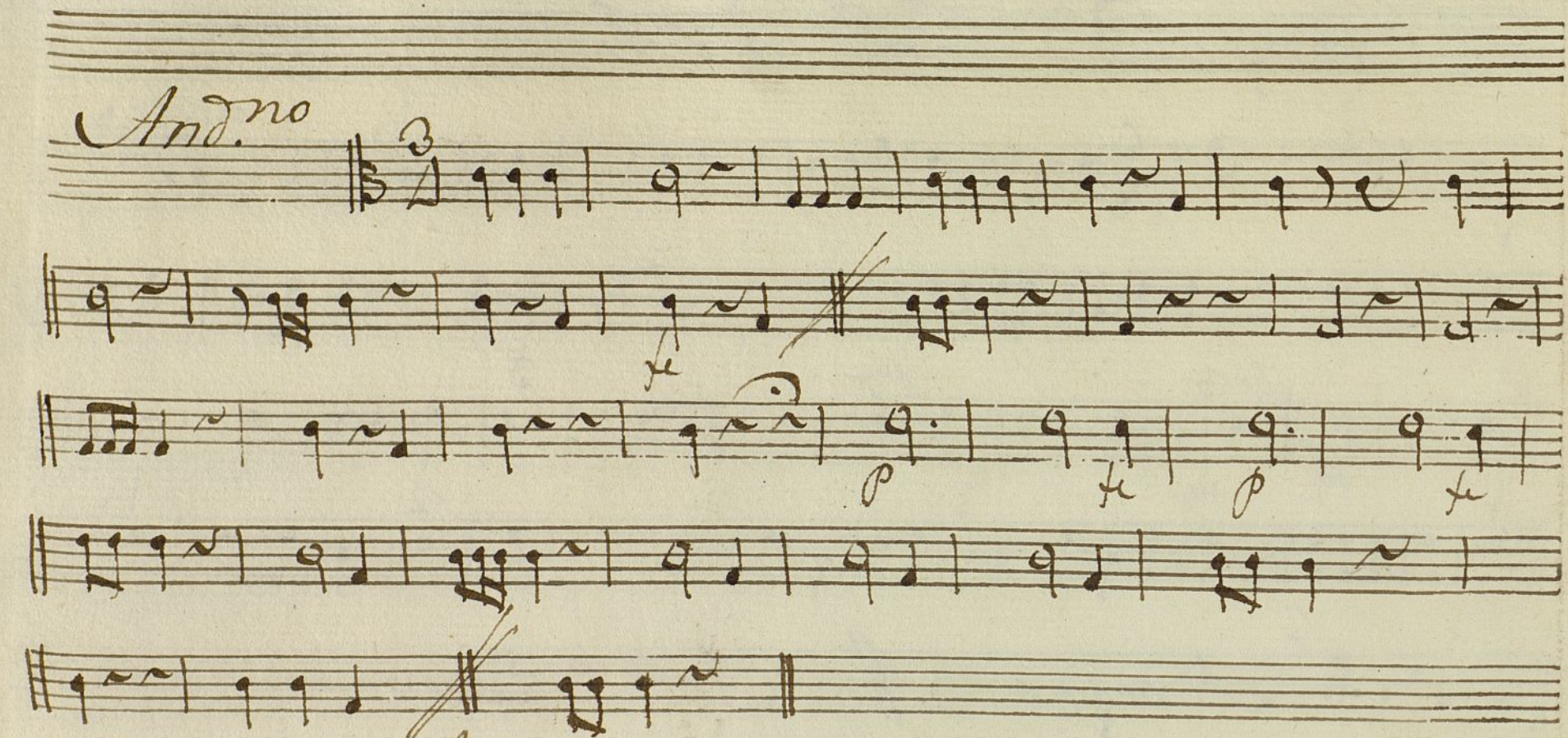


*Trompa 2.<sup>a</sup> Ton.<sup>a</sup> a' solo*

NWS 72-10 1



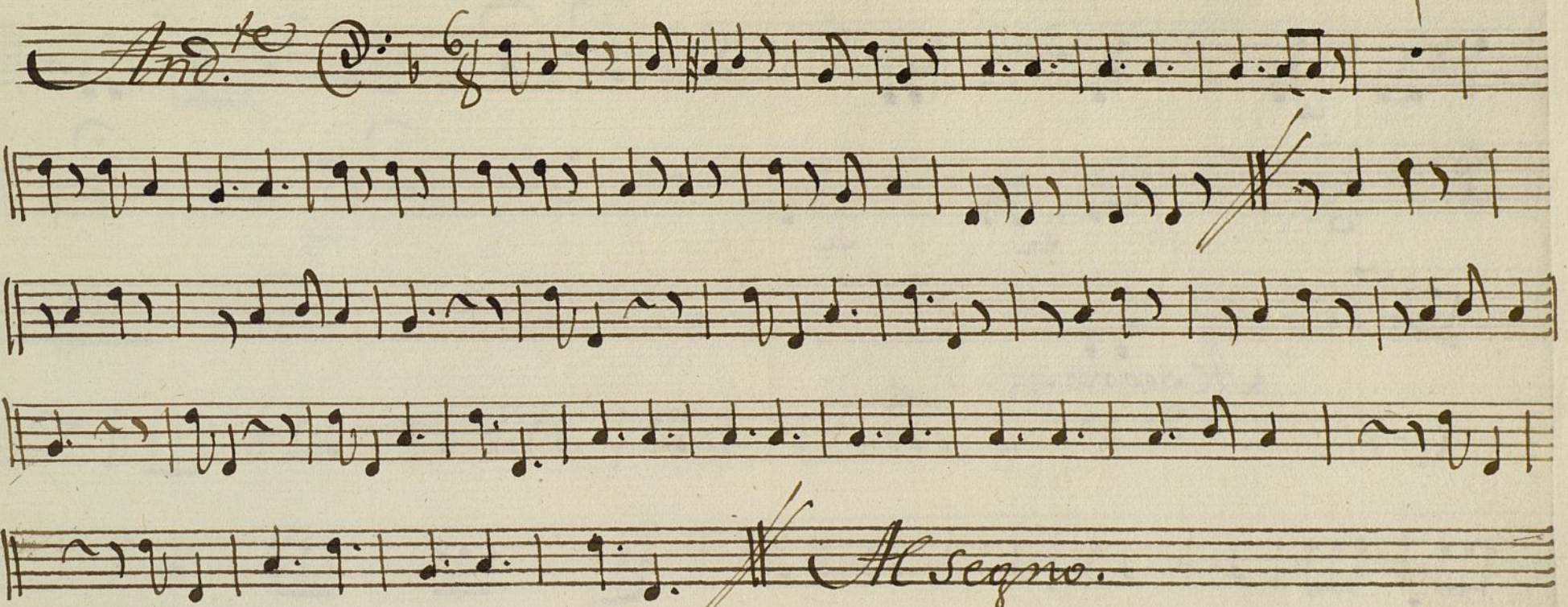


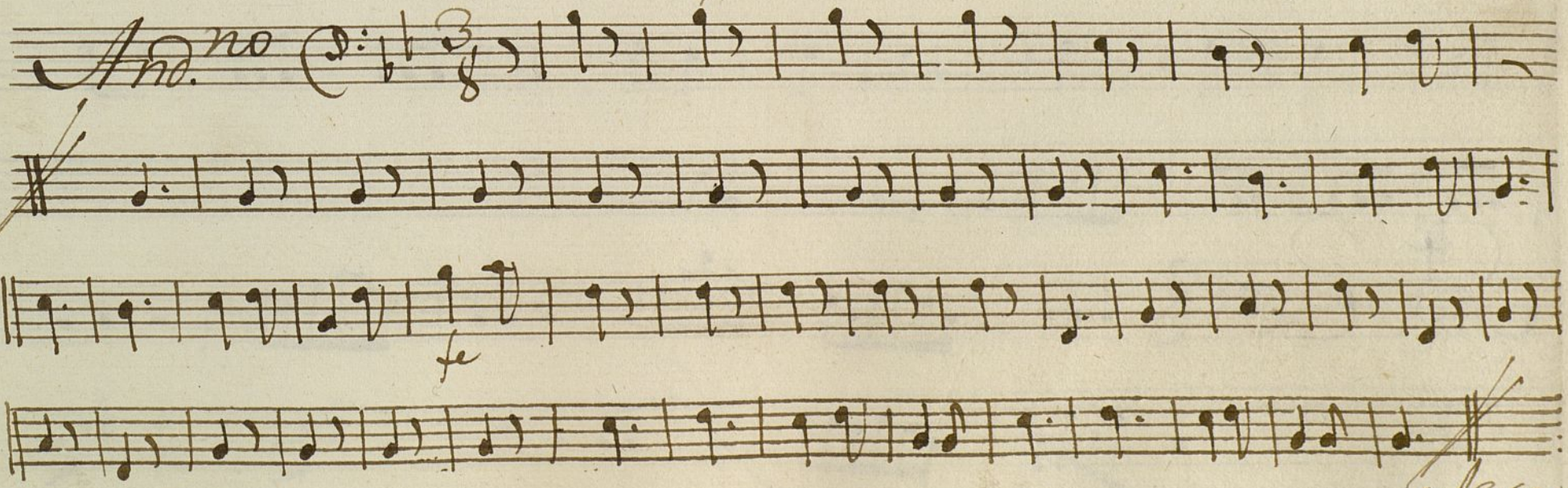


*Allegro*



*Bajo Ton.<sup>a</sup> a solo.*

*And.<sup>te</sup>* 

*And.<sup>no</sup>* 

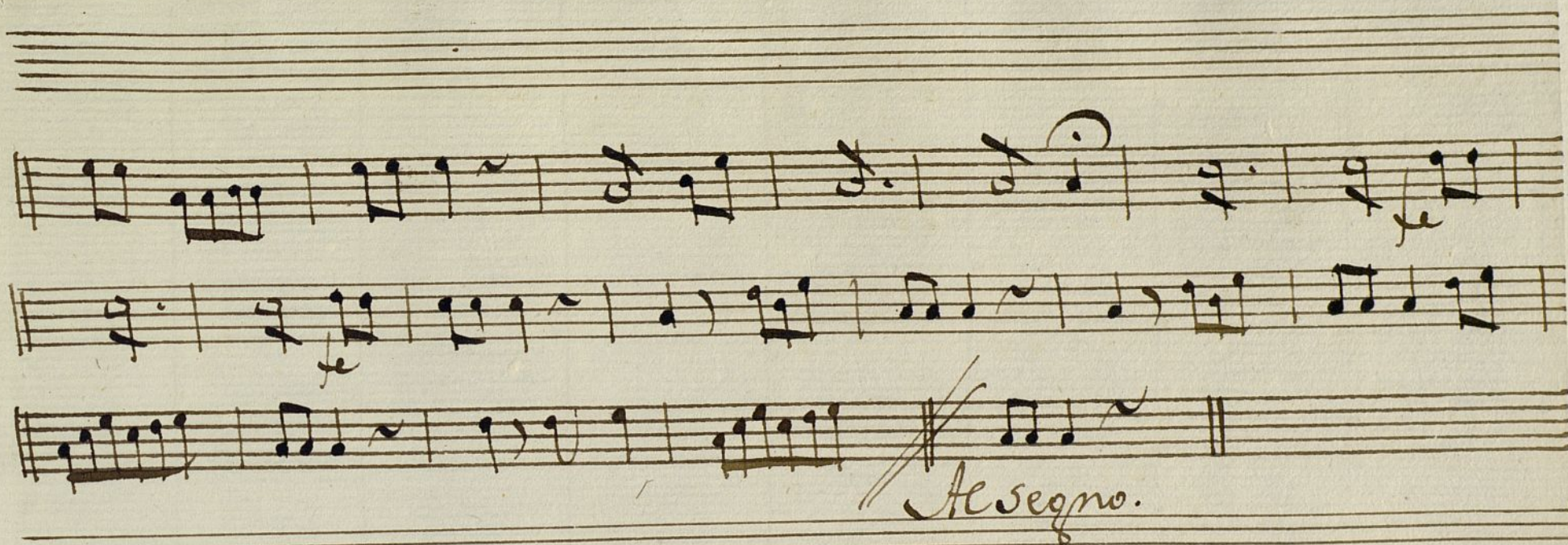


*And.<sup>te</sup>*  $\text{C} \frac{3}{4}$

*Alleg.<sup>ro</sup>* *Alleg.<sup>ro</sup>*  $\text{C} \frac{3}{8}$

*And.<sup>no</sup>*  $\text{C} \frac{3}{4}$







The image shows a single page from an old music manuscript book. The paper is a light cream or off-white color, showing signs of age such as slight discoloration and a slightly rough texture. There are ten horizontal musical staves, each consisting of five lines, printed in a dark brown or sepia ink. The staves are evenly spaced and run across the width of the page. The left edge of the page is slightly irregular, showing the binding of the book. At the bottom center of the page, the text "Ayuntamiento de Madrid" is printed in a simple, sans-serif font.

Ayuntamiento de Madrid