

N<sup>o</sup>

31

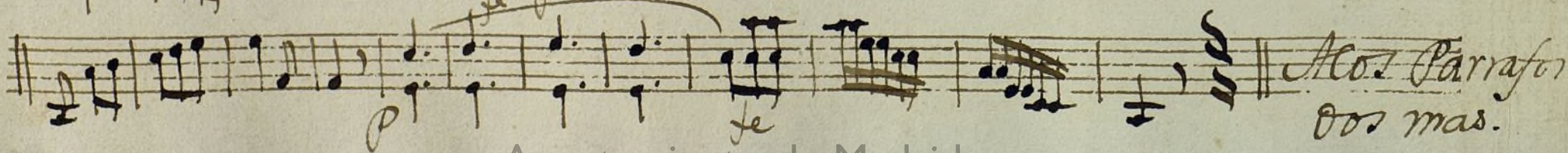
Mus 78-10

+

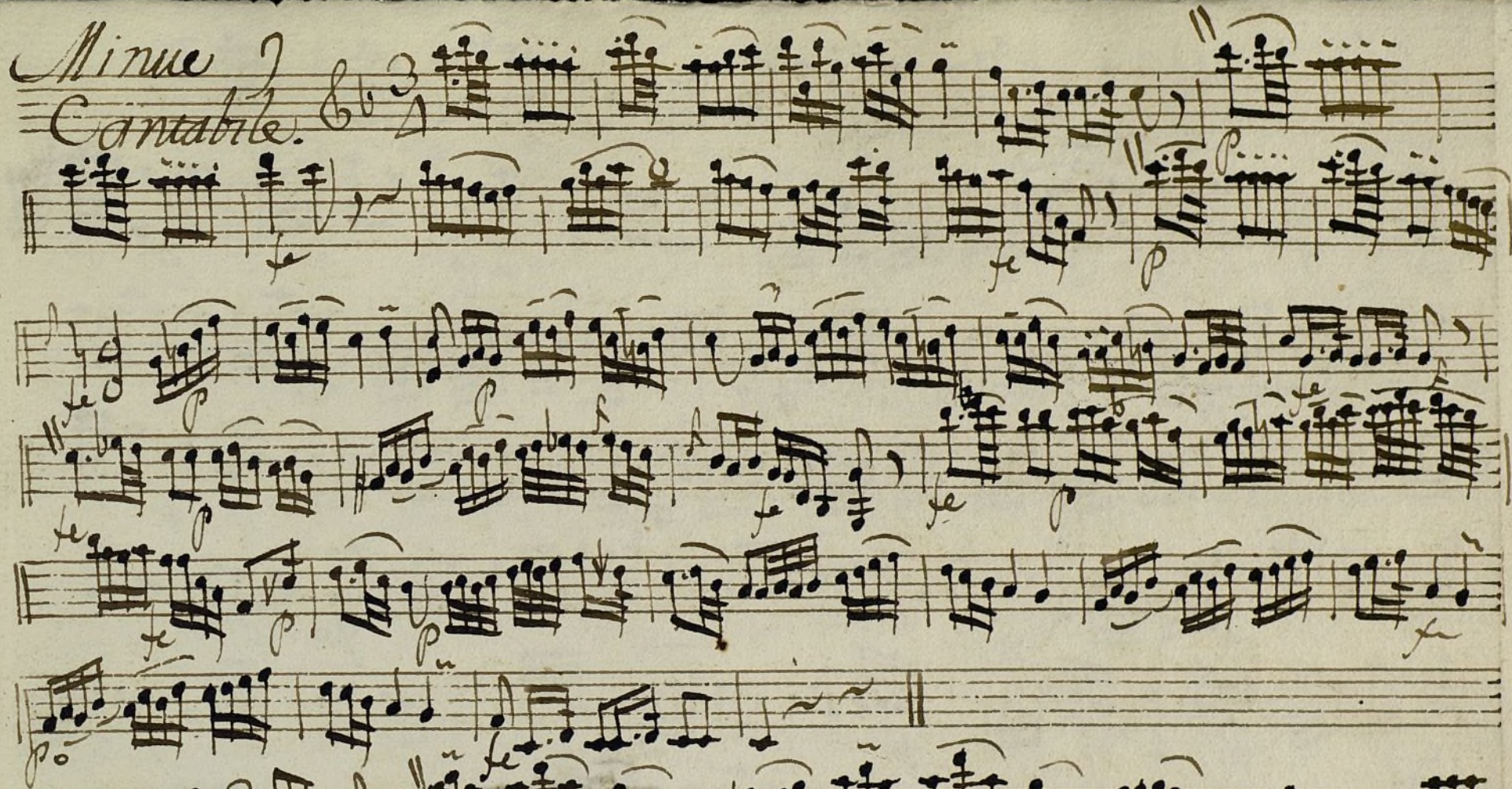
Violin 1.<sup>o</sup>

Ton.<sup>a</sup> a solo

*Viv. And.<sup>te</sup>* Violin 1.<sup>o</sup> Ton.<sup>a</sup> a solo



*Minue 2*  
*Contable.*

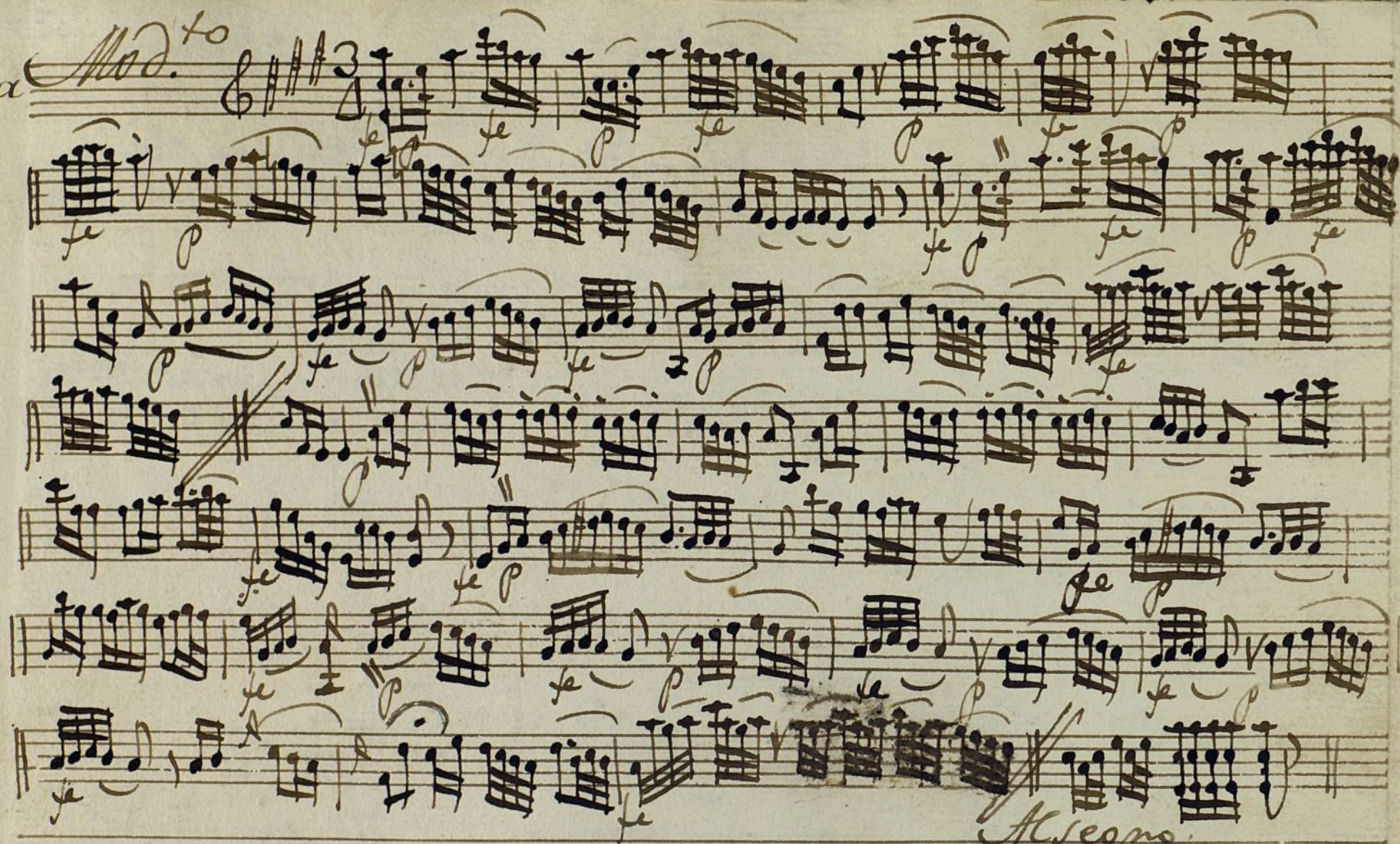


*Poco:*



Despa  
cio

Mod.<sup>to</sup>



Allegro

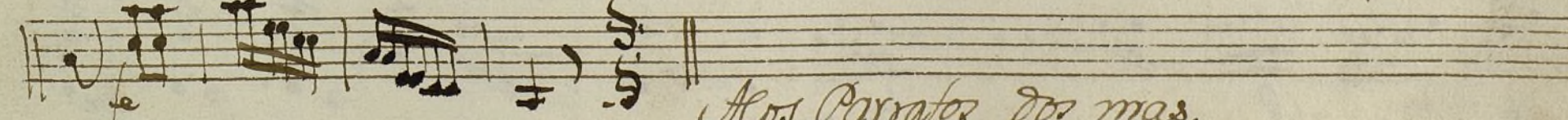
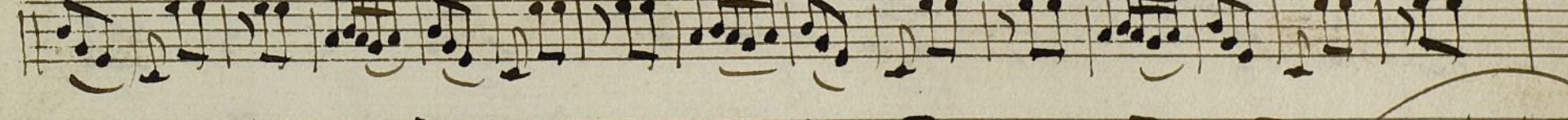
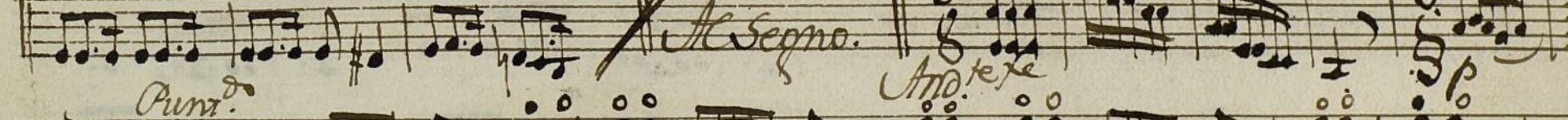
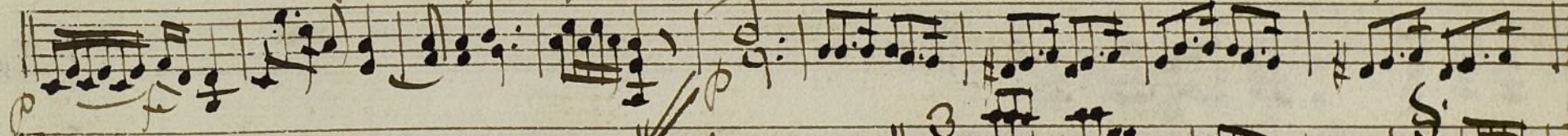
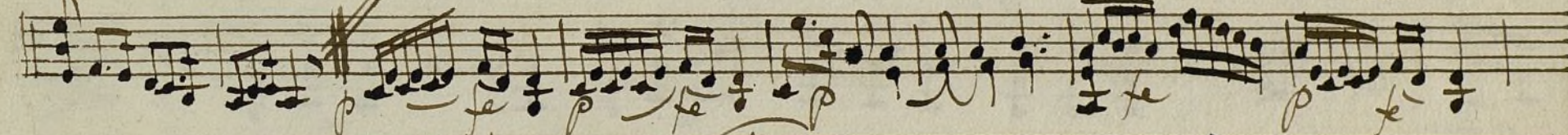
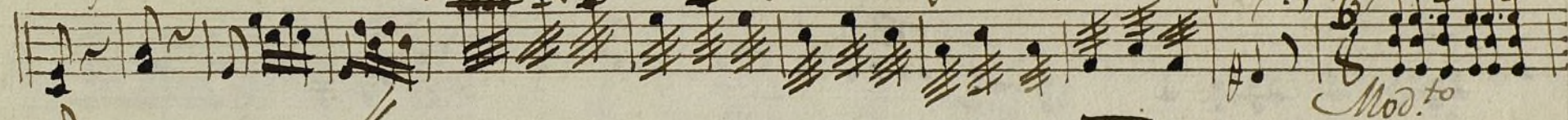
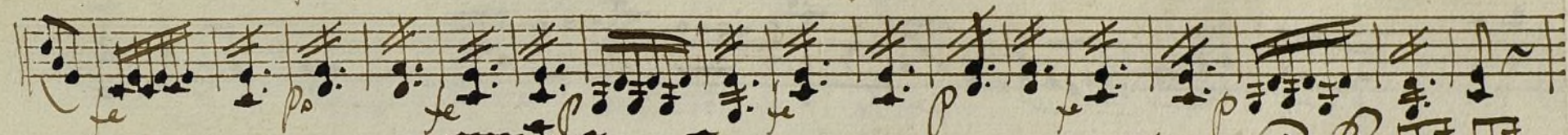
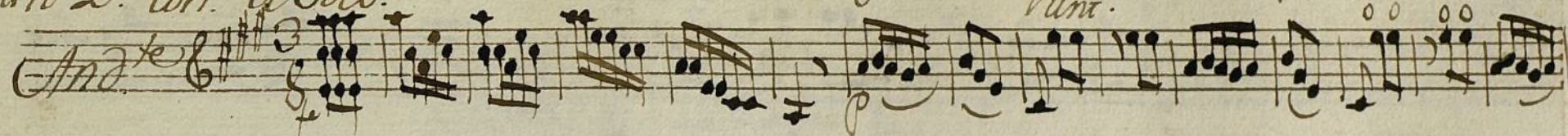
Violin 2.<sup>o</sup> Ton.<sup>a</sup> a solo.

♩

Punt.<sup>o</sup>

N.<sup>o</sup>

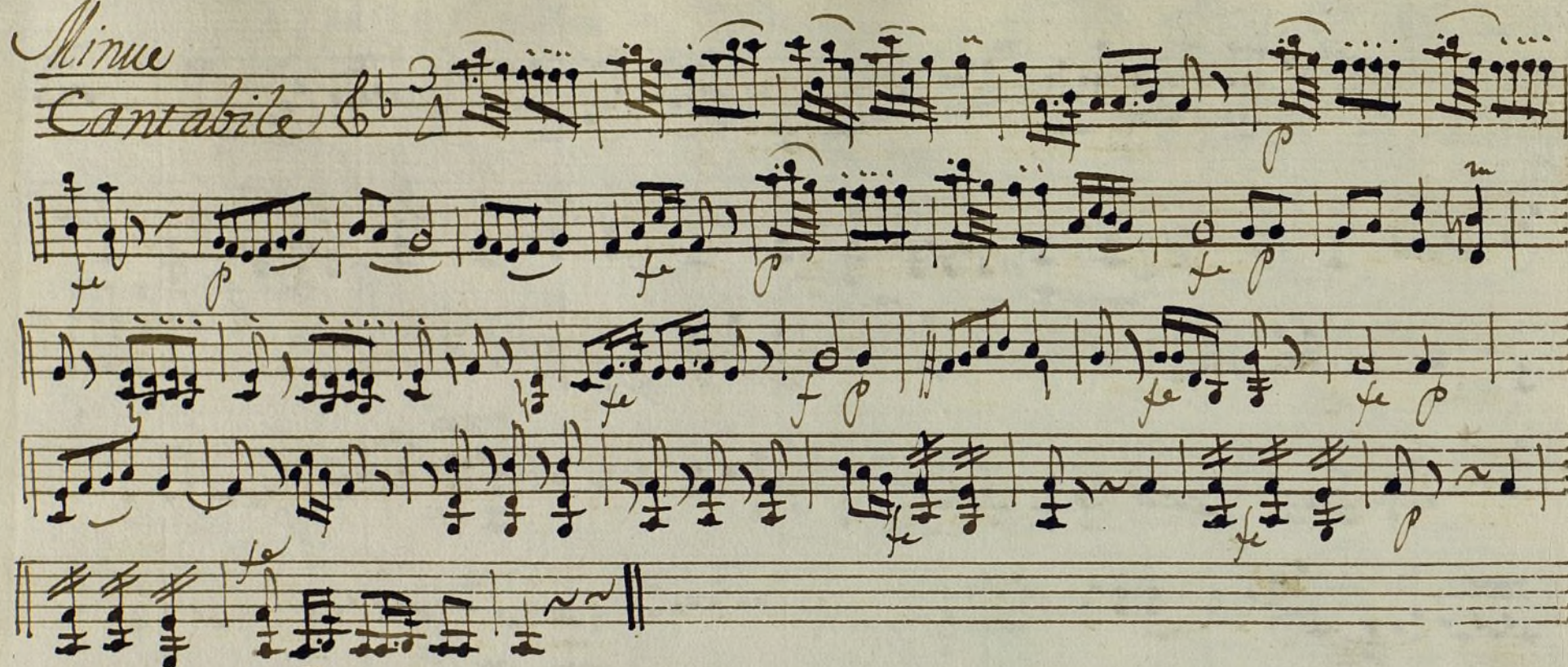
MUS 78-10 31.



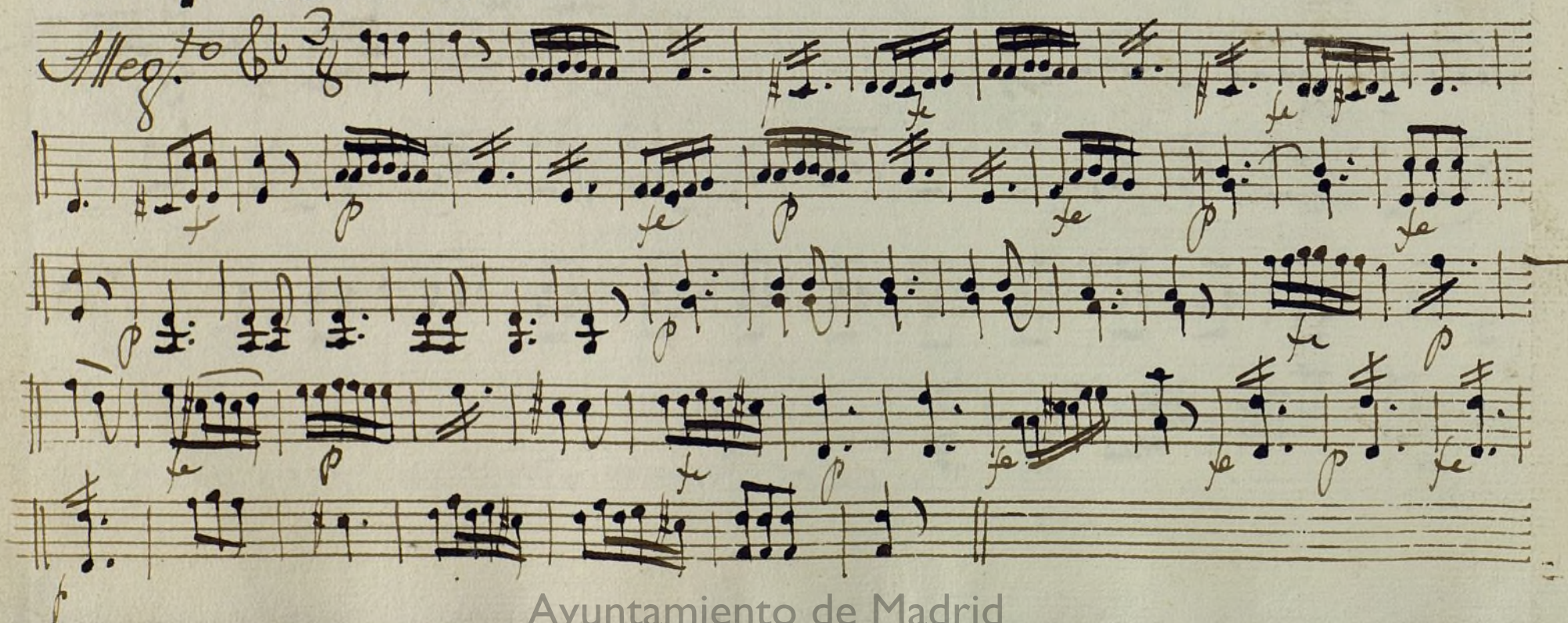
A los Parrales dos mas.

*Minue*

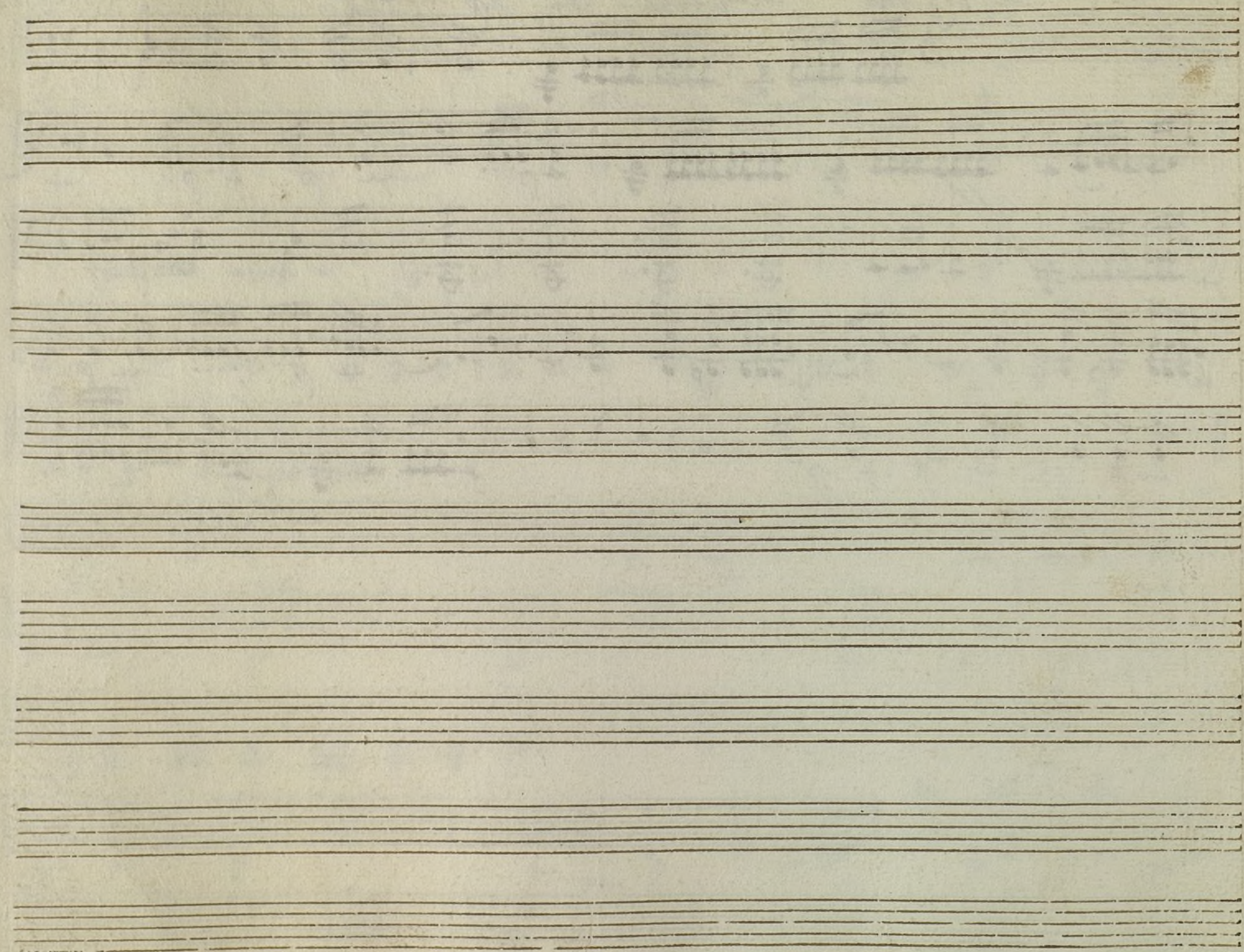
*Cantabile*



*Alleg.<sup>ro</sup>*



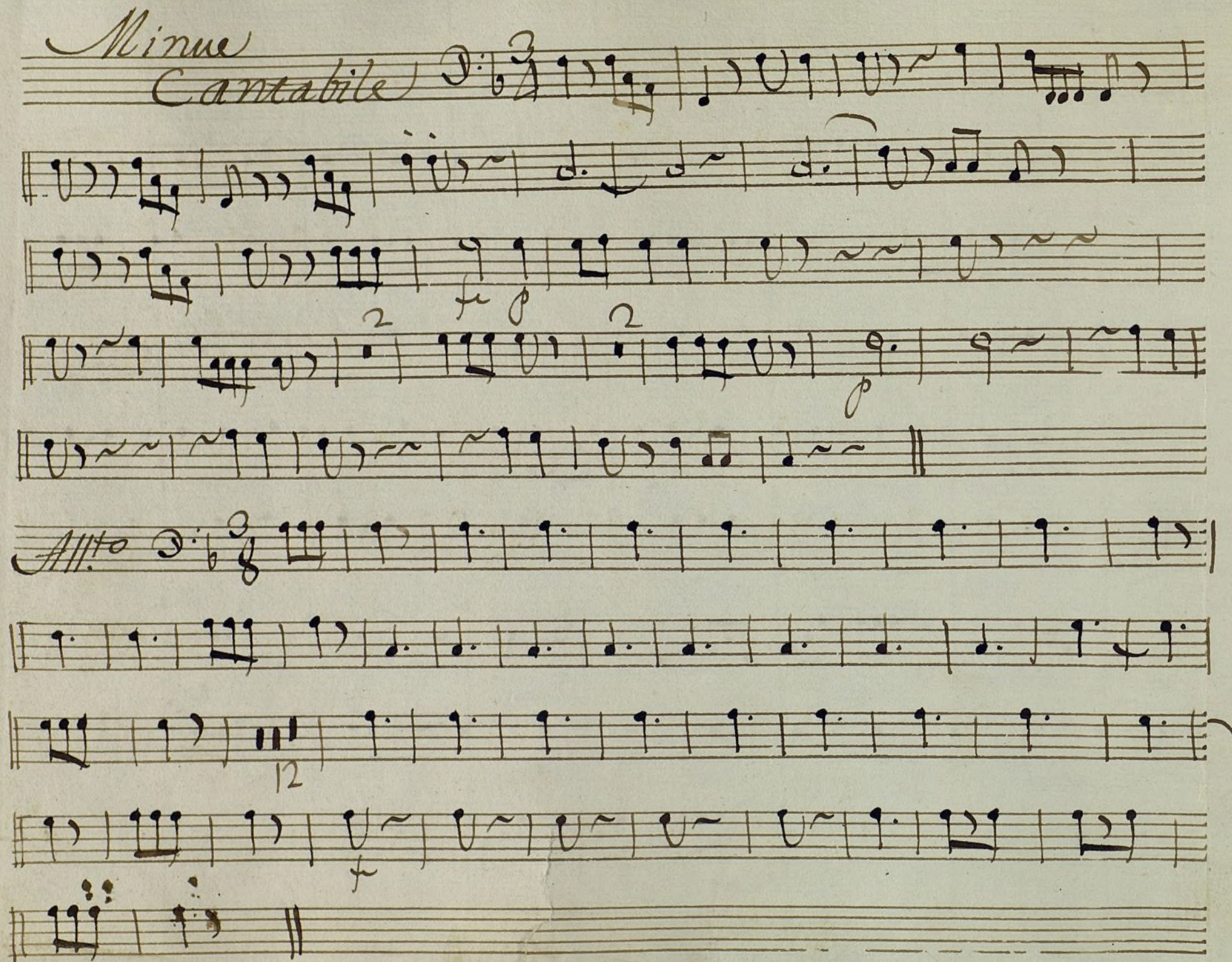




<sup>t</sup>  
Trompa 1.<sup>a</sup> Ton.<sup>a</sup> a Solo.

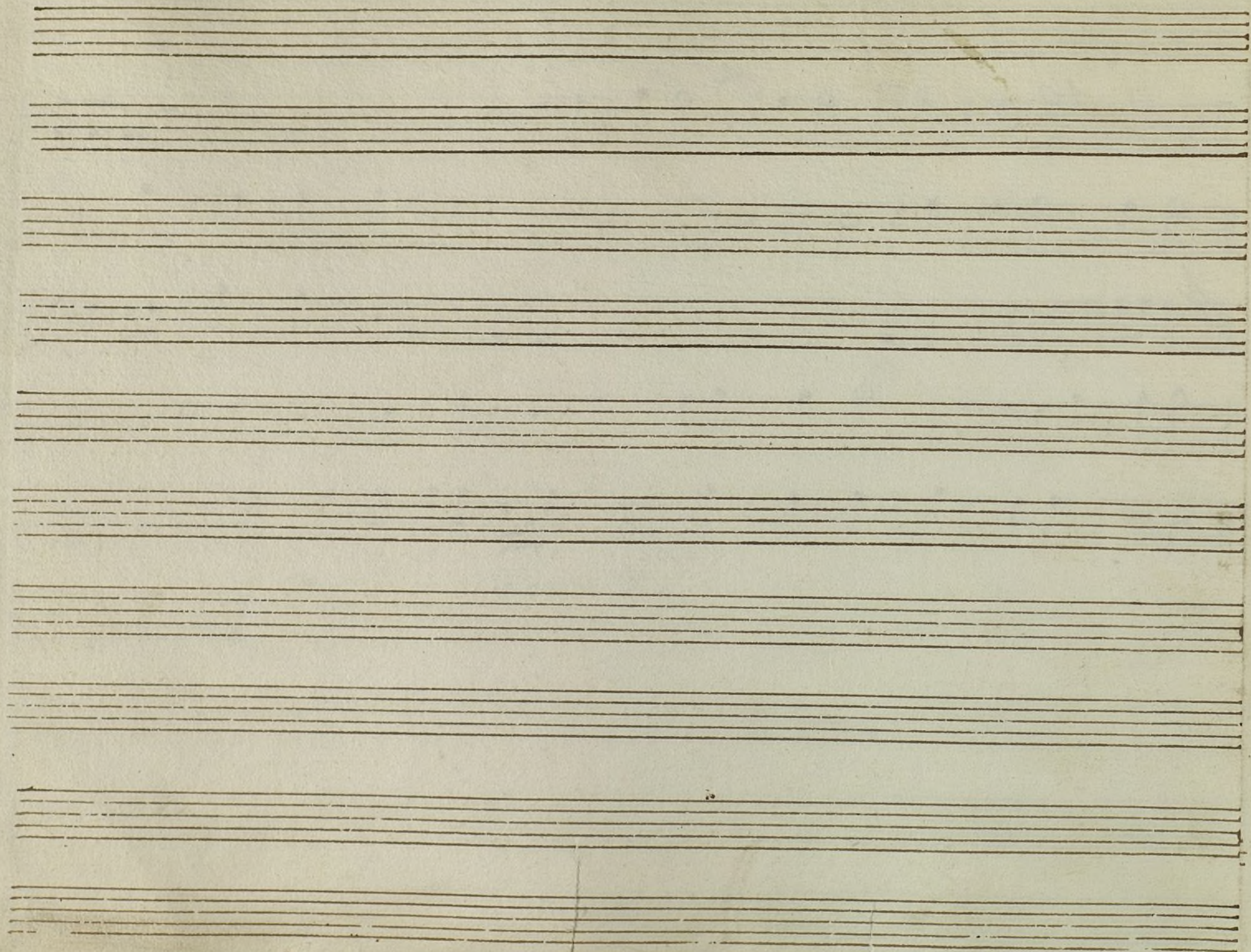
Handwritten musical score for Trompa 1.<sup>a</sup> in D major, 3/8 time. The score consists of 10 staves. The first staff is marked 'And.' and the second staff is marked 'Mod.to'. The third staff is marked 'Allegro'. The fourth staff is marked 'And.' and the fifth staff is marked 'Allegro'. The sixth staff is marked 'And.' and the seventh staff is marked 'Allegro'. The eighth staff is marked 'And.' and the ninth staff is marked 'Allegro'. The tenth staff is marked 'And.' and the eleventh staff is marked 'Allegro'. The score includes various musical notations such as notes, rests, and dynamic markings like 'p' and 'f'.

A los Parrafos dos ma.

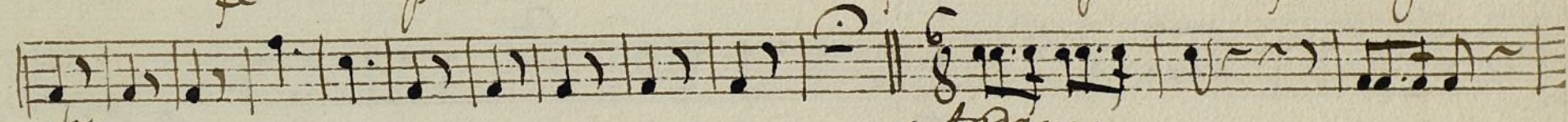
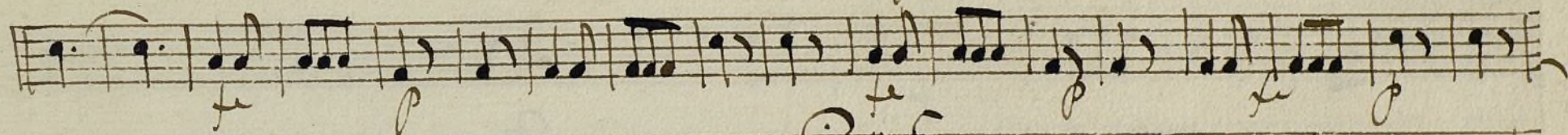
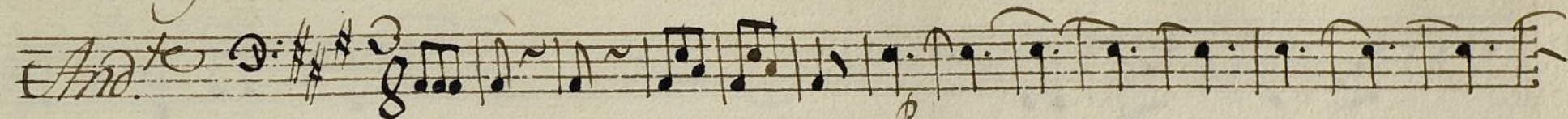


Handwritten musical score on six staves. The notation includes various note values (quarter, eighth, sixteenth notes), rests, and accidentals. The first staff begins with the tempo marking *Mod.<sup>to</sup>* and a key signature of one sharp (F#). The music is written in a single system across the six staves, with a double bar line and repeat sign at the end of the fifth staff.

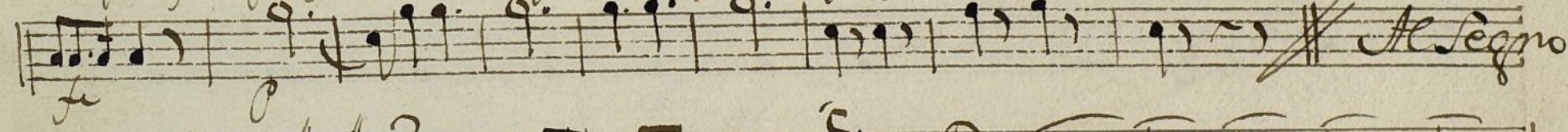
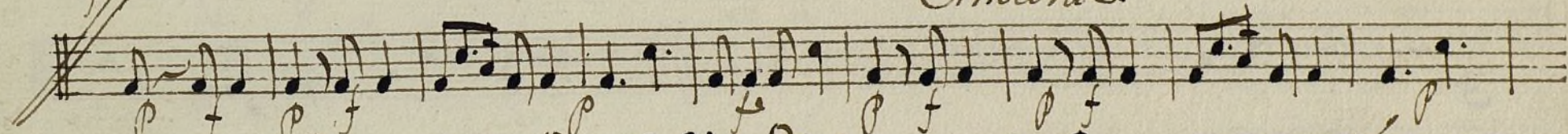
*Allegro.*



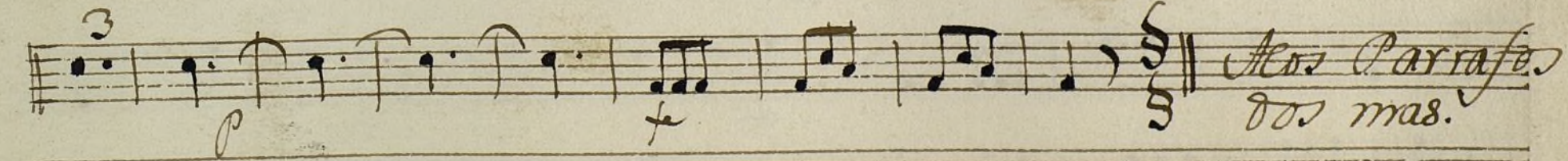
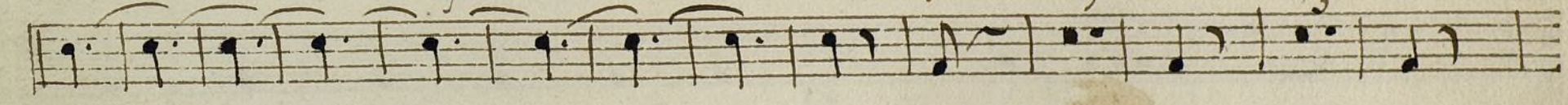
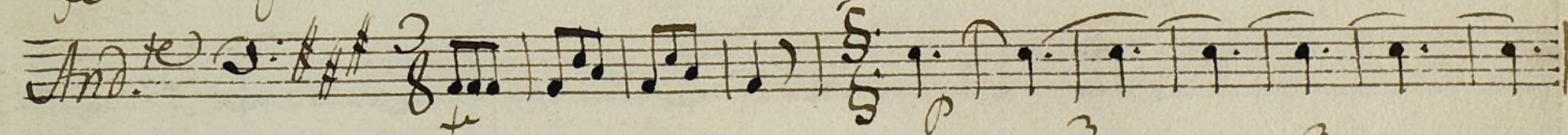
*Trompa 2.<sup>a</sup> Ton.<sup>a</sup> a Solo*



*Andante.*



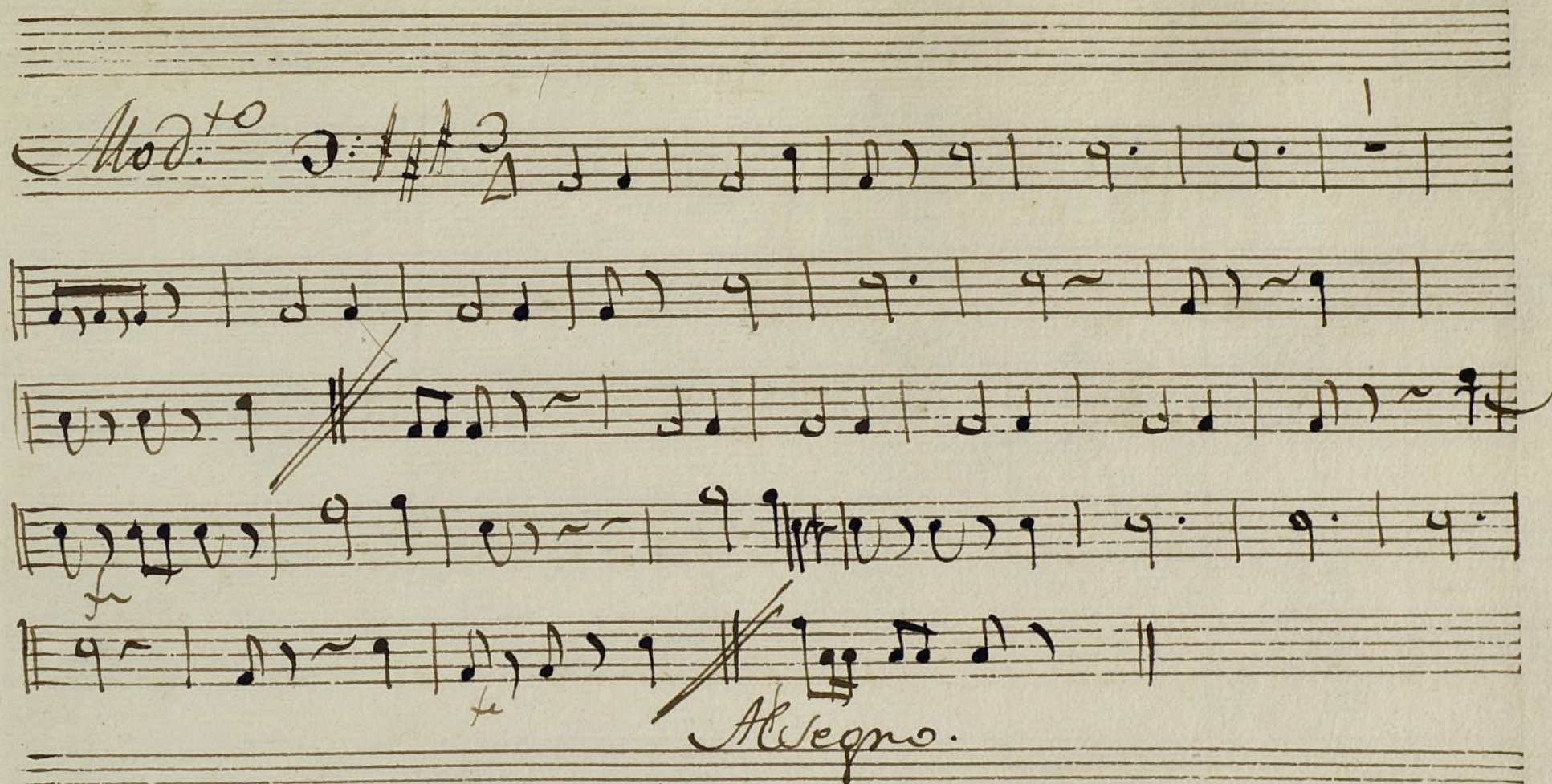
*Al Segno*

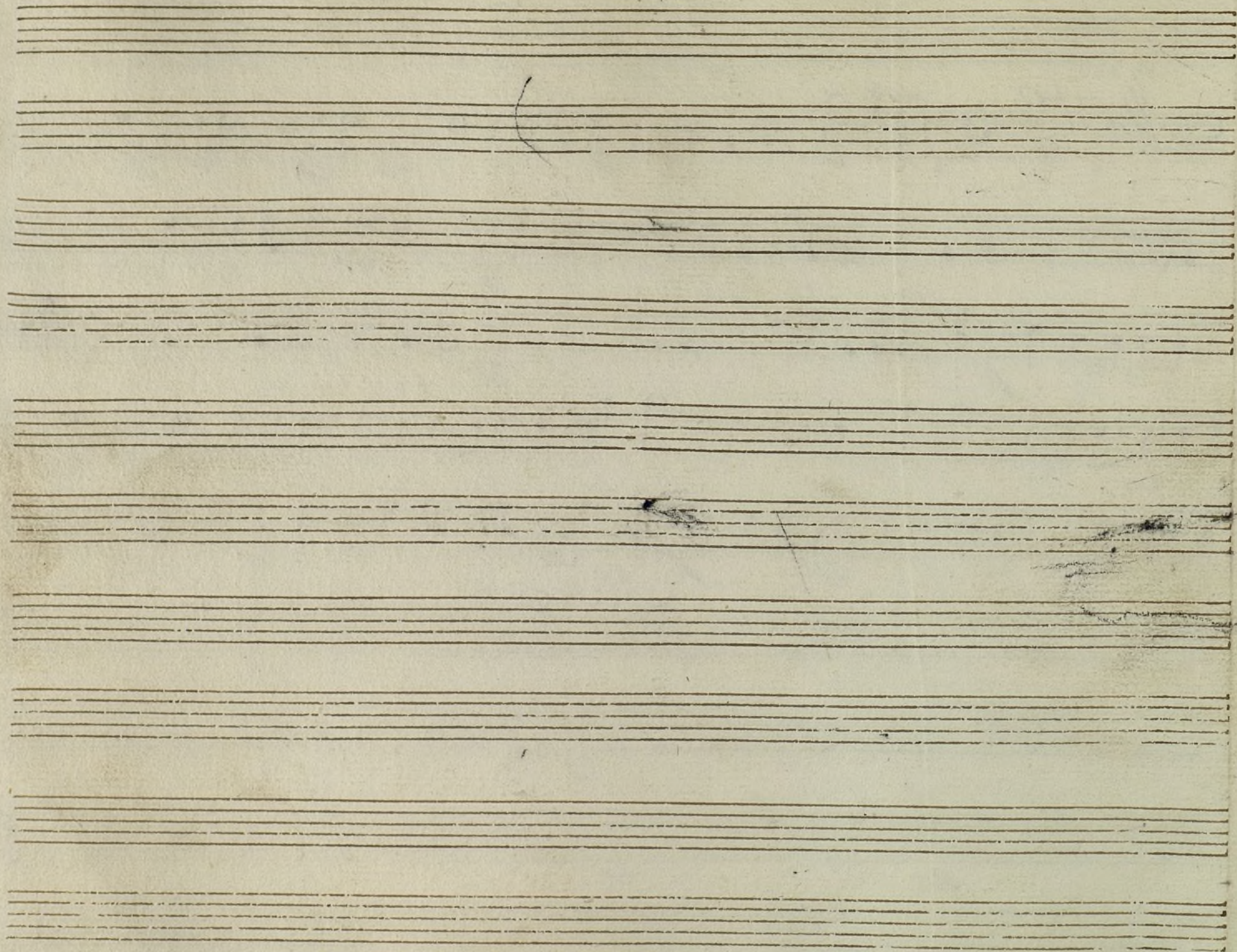


*Los Parrafos  
dos mas.*

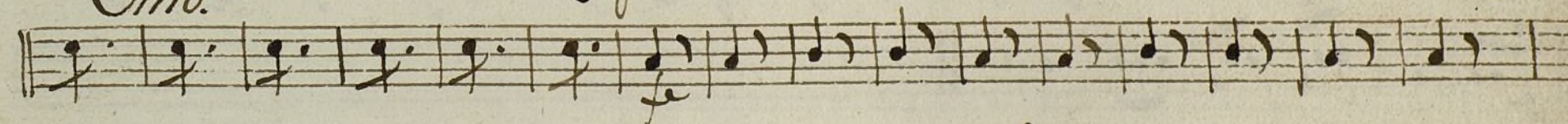
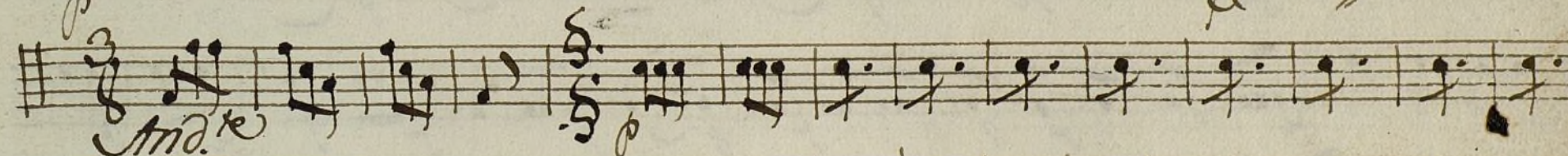
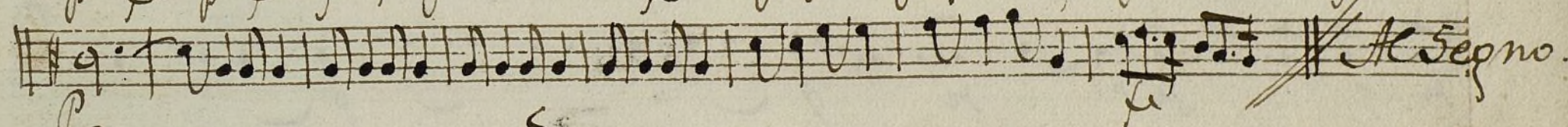
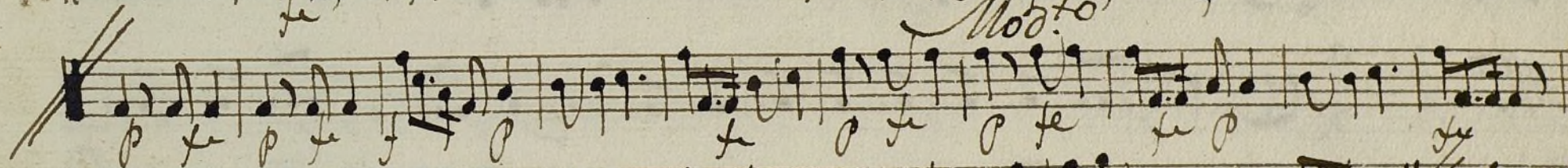
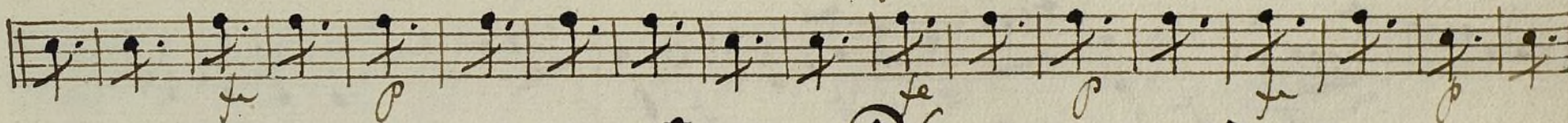
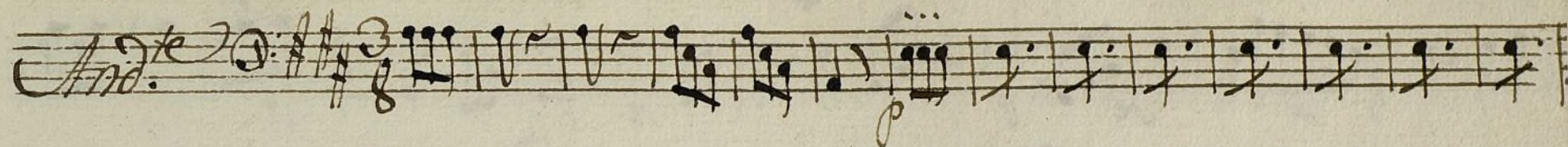
*Minue*  
*Cantabile*

A handwritten musical score on aged, slightly torn paper. The title 'Minue Cantabile' is written in a cursive hand at the top left. The score consists of ten staves of music. The first staff begins with a treble clef, a key signature of one flat (B-flat), and a 3/4 time signature. The notation includes various note values (quarter, eighth, sixteenth notes), rests, and dynamic markings such as 'f' (forte) and 'p' (piano). There are also numerical markings like '3', '2', and '12.' which likely indicate fingerings or measure counts. The handwriting is elegant and characteristic of 18th or 19th-century musical manuscripts. The paper shows signs of age, including discoloration and small tears at the edges.



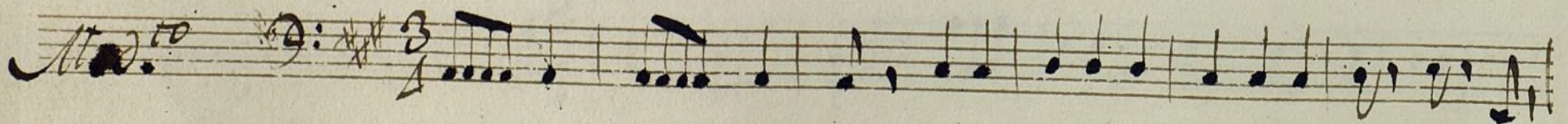
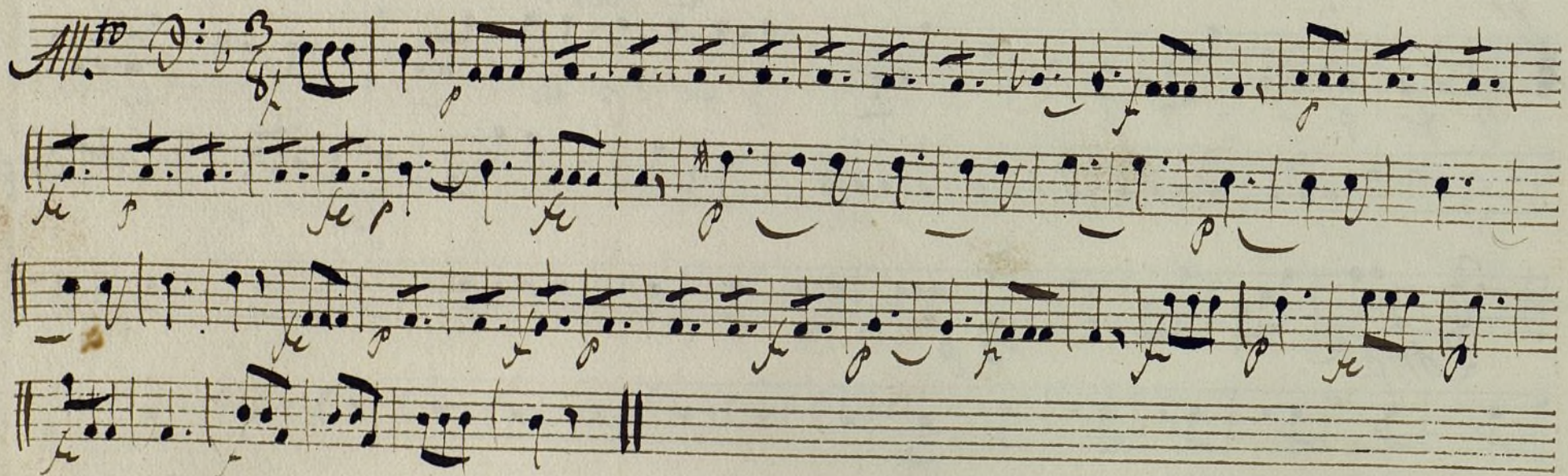
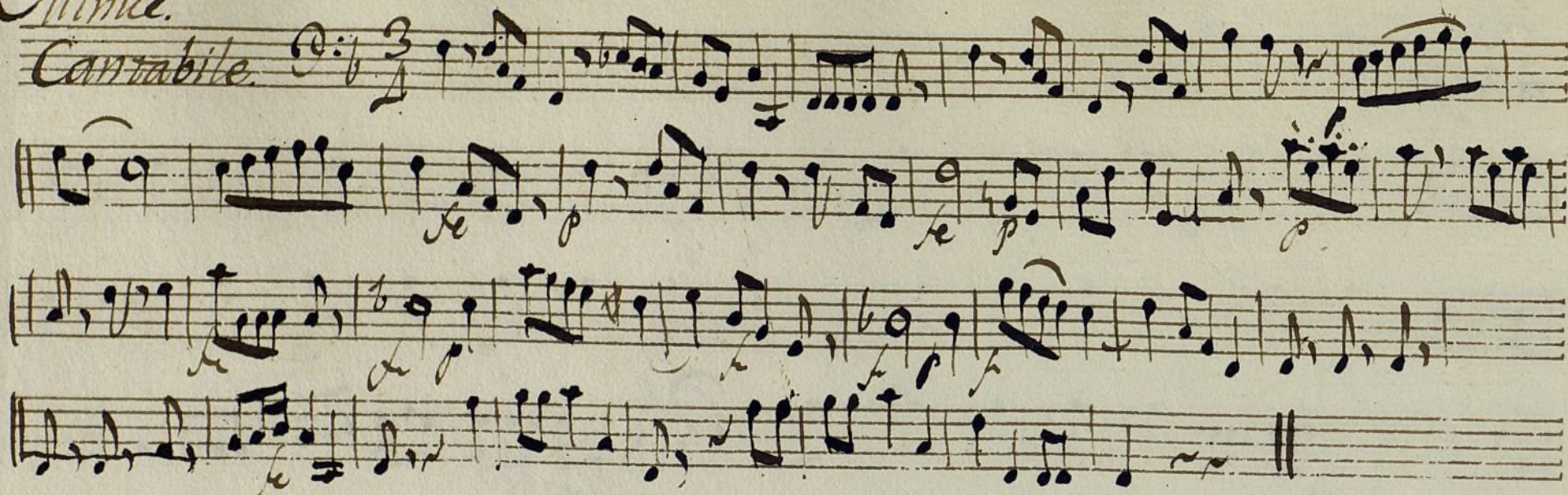


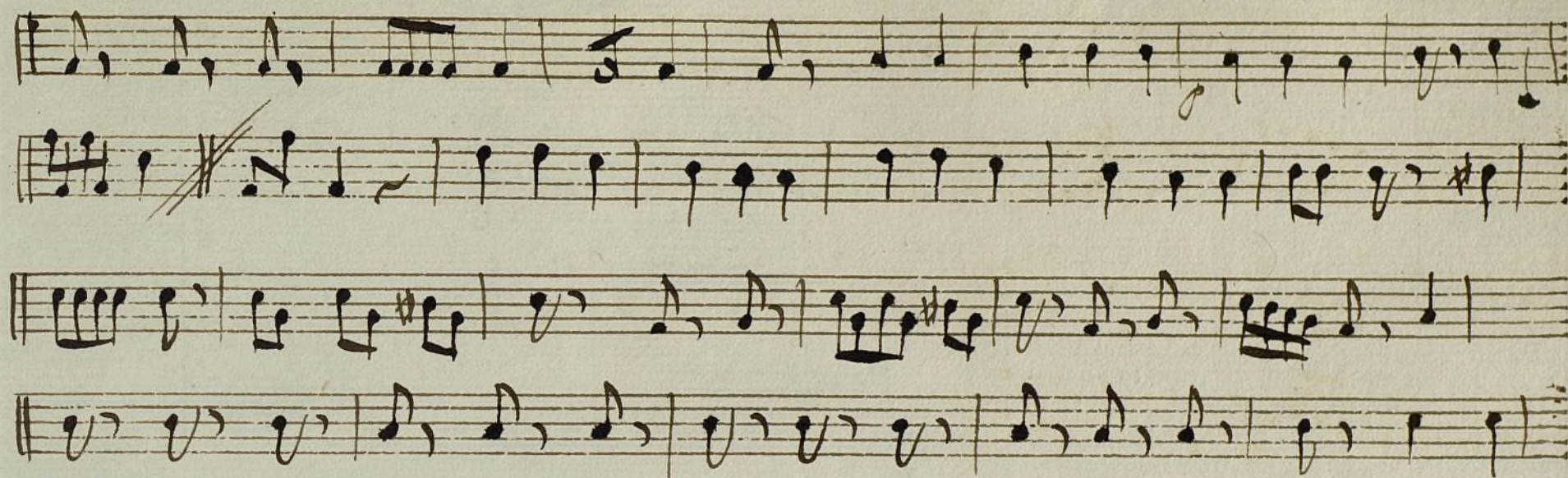
Ayuntamiento de Madrid

*Bajo Ton.<sup>a</sup> a Solo*

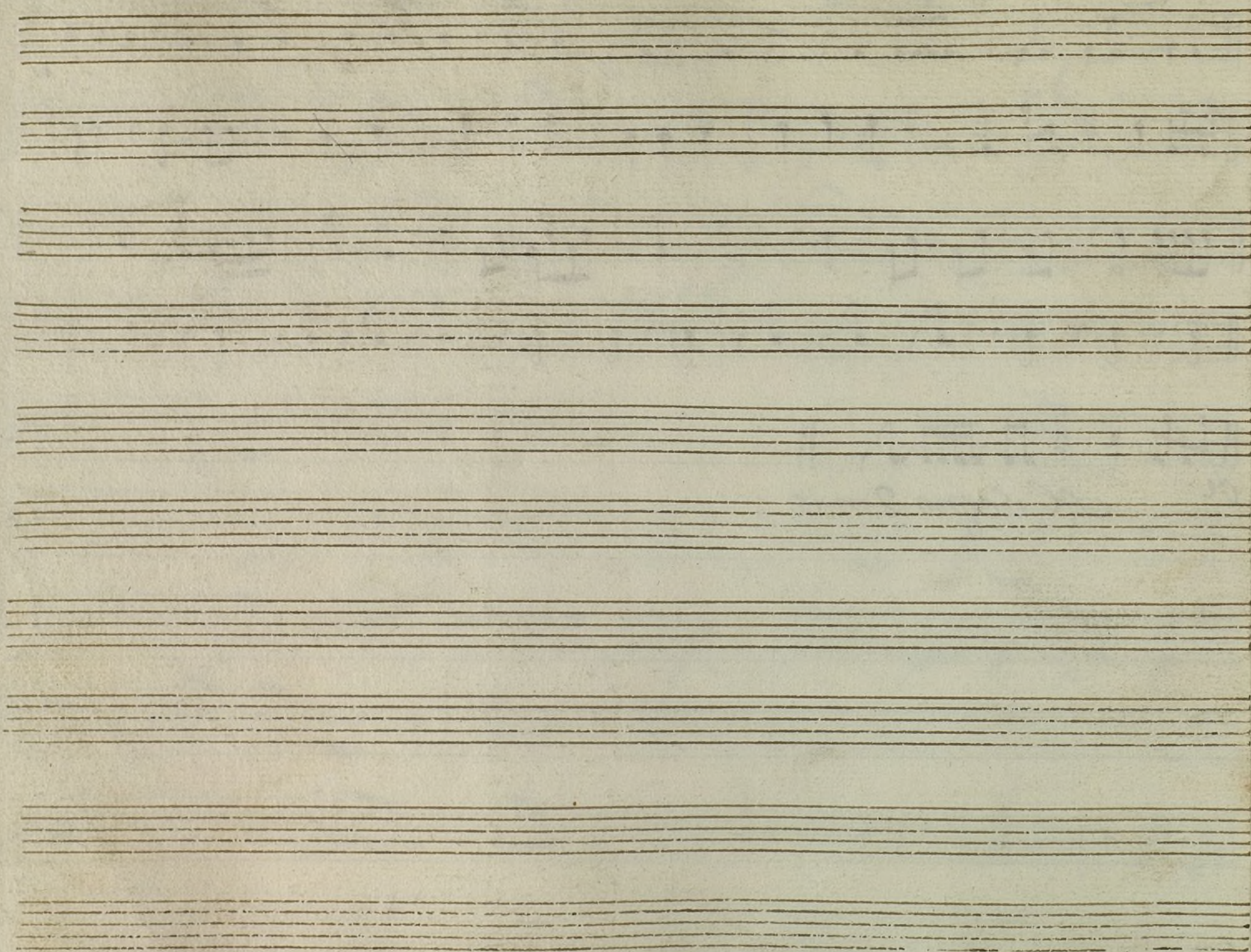
*Allegro.*

*Cantabile.*





Al Segno 2 mas.



Leg. ~~1.º~~ - r. ~~1.º~~

Leg. 2.º al n.º 64.

Mus 78-10

1  
Libro de  
transcripción

t

Tonadilla.

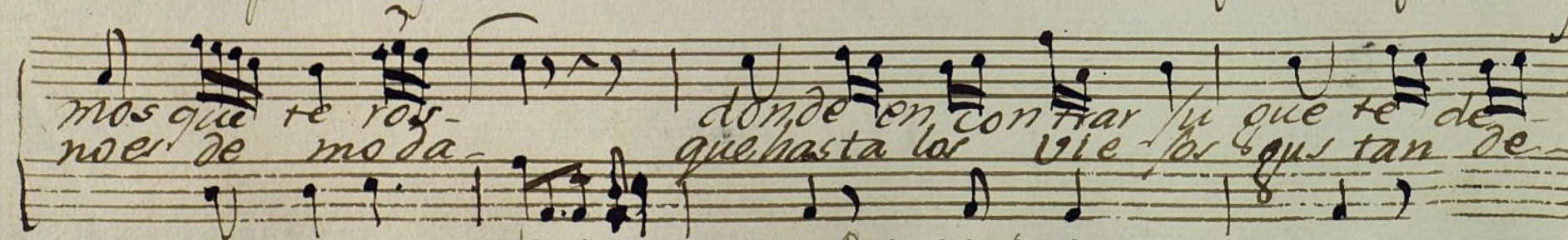
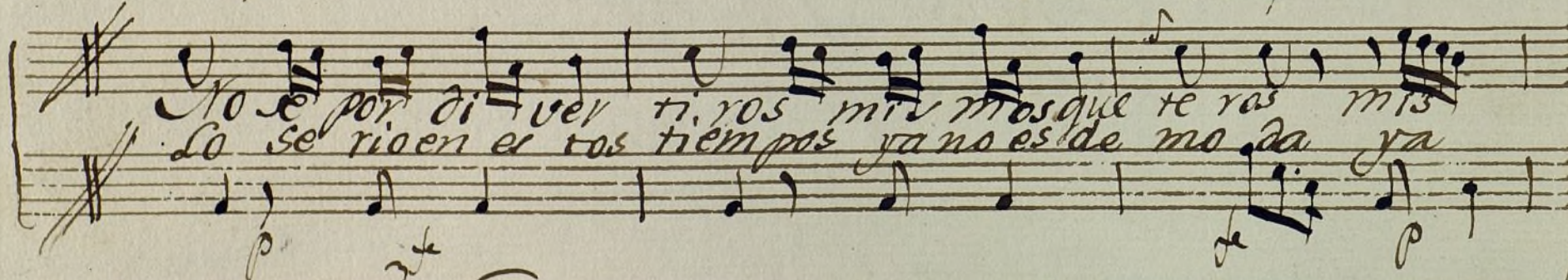
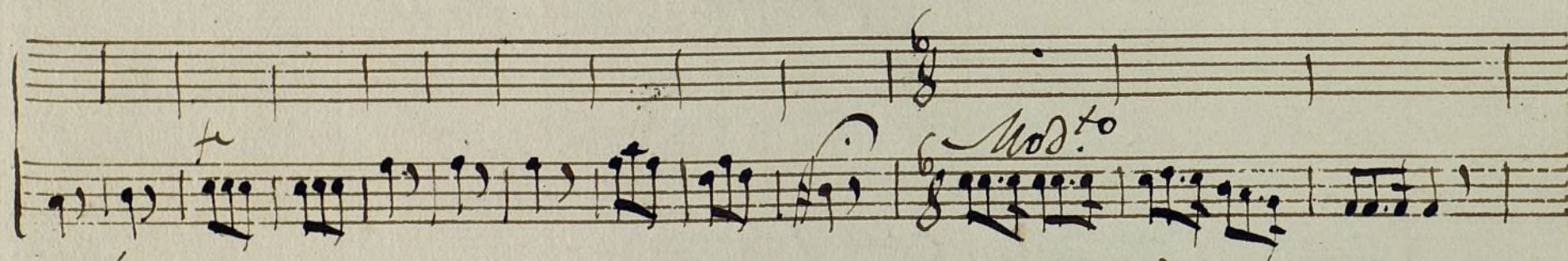
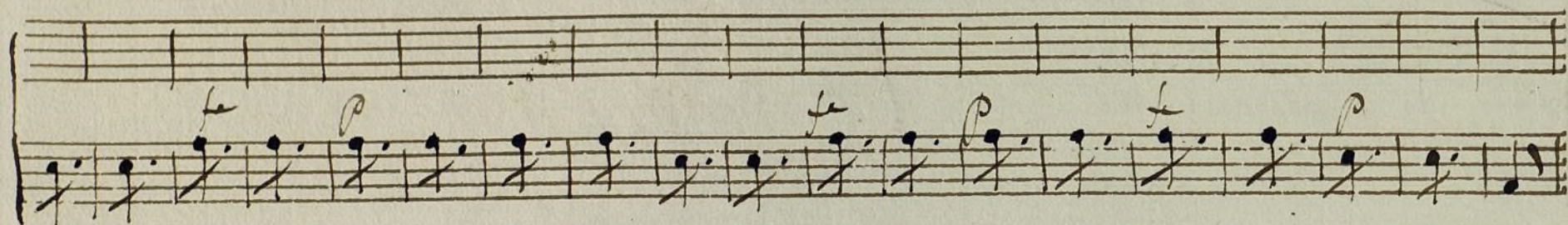
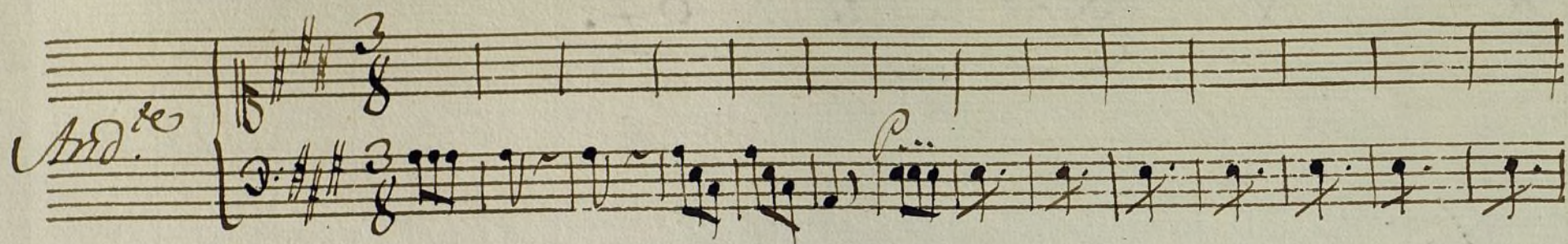
A solo.

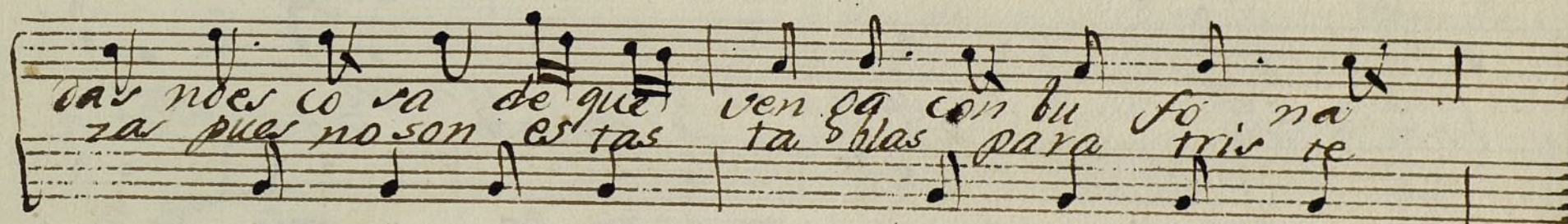
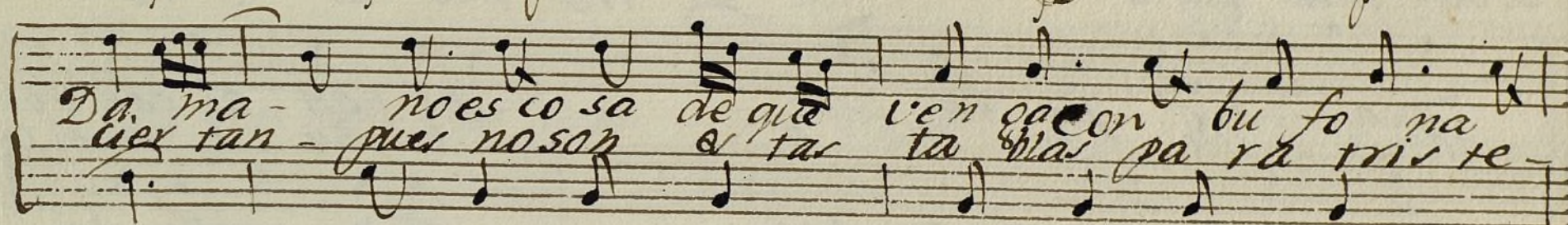
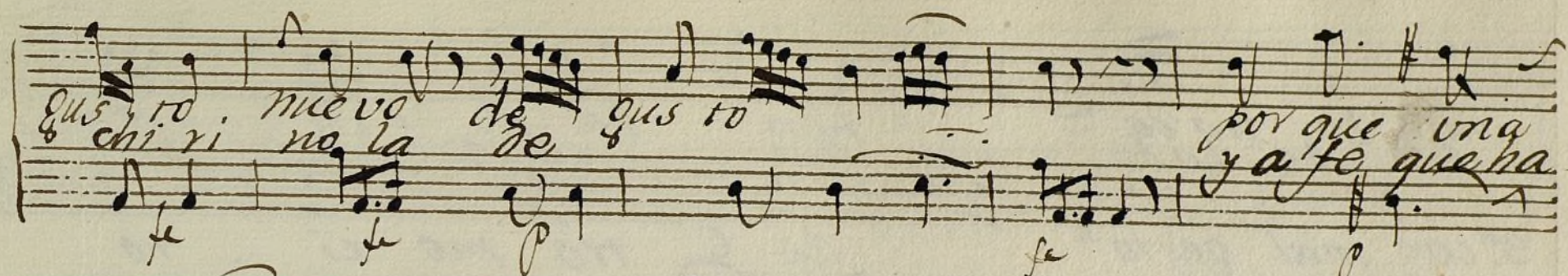
No se por divertidos - mis moqueteros

La S.ªa figueras.

De.

D.ª Ventura Galván

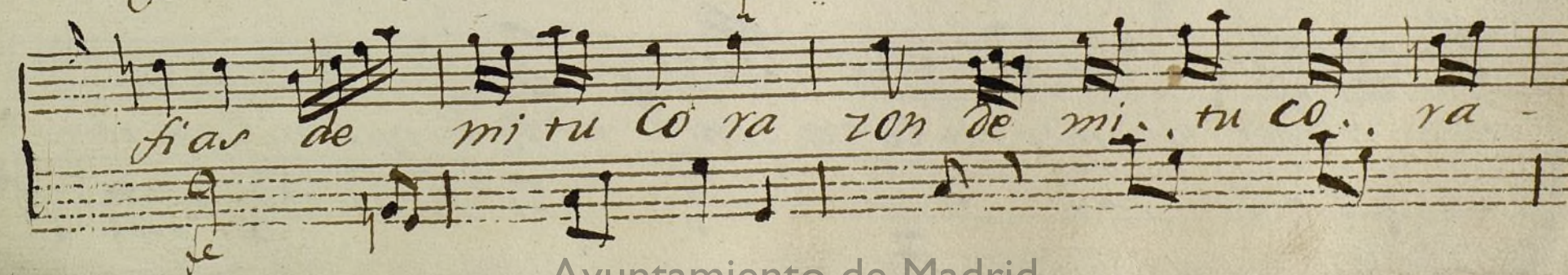
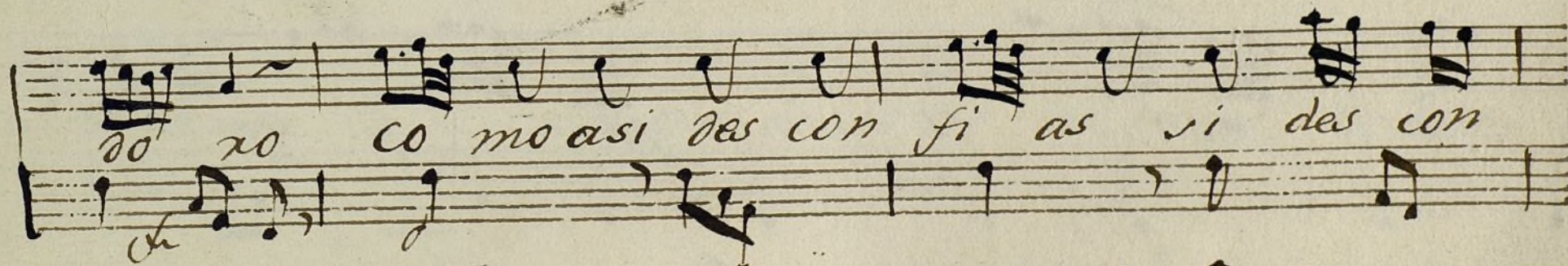
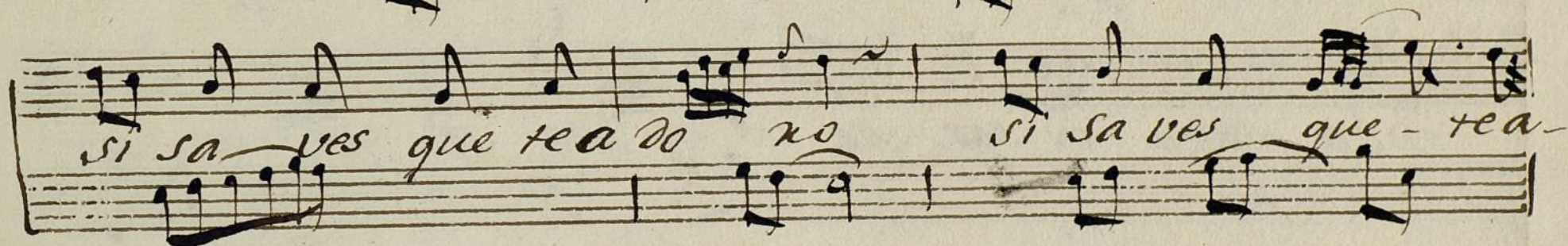
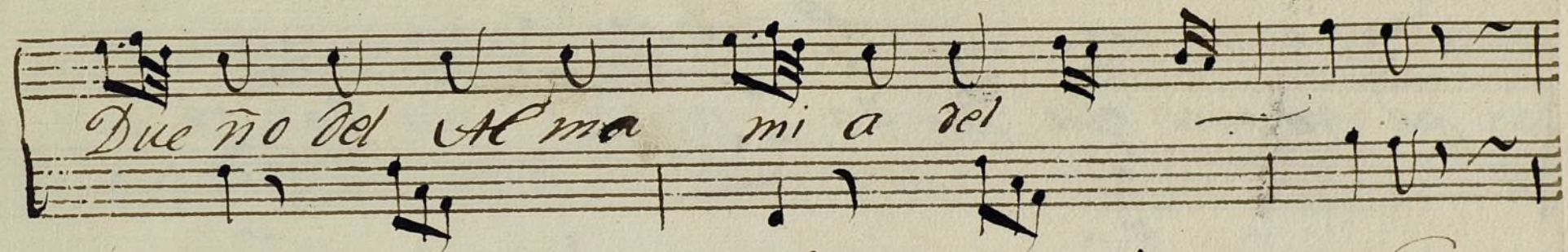
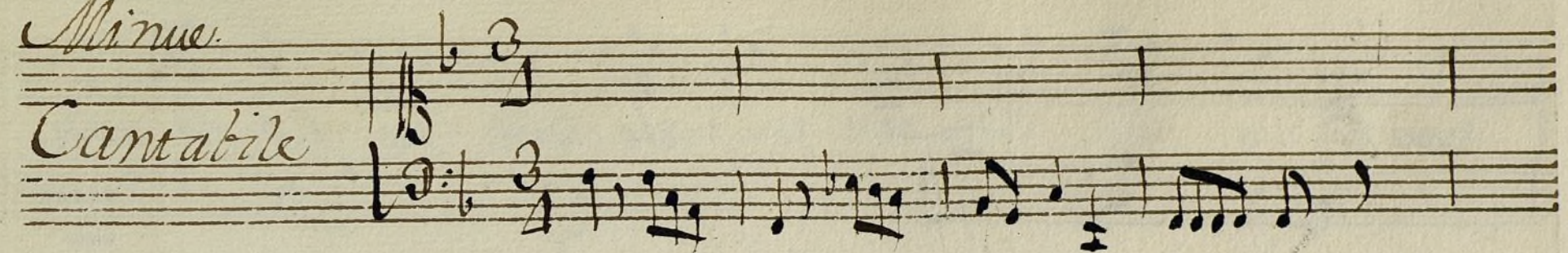




mi to na da em to za do ten que se de que to bra ba  
 3.ª con mal ge to de o tro mo zi to  
 de qua tro pa la bras oi gan oi gan se  
 i ba i ba el tal  
 pe di a ce los y ella y ella la  
 no hom bre oi gan oi gan ma da mas  
 po bre a com pa ñan do  
 muer ta muer ta de mie do  
 lo que a mi me a pa sa do es ta  
 au na ni ña mui lin da de ta  
 pro u ro de este mo do sa  
 es ta ma na na mu cho garbo  
 tis fa cer lo

*Minue.*

*Cantabile*



Handwritten musical score on aged paper, featuring five systems of staves. Each system consists of a vocal line (treble clef) and a piano accompaniment line (bass clef). The lyrics are written in Spanish and are integrated with the musical notation. The paper shows signs of age, including yellowing and some staining.

zon de de mi tu Co ra zon.

pe ro pues que mi lla - - n to - mi llan to

no a placa tu sos pe - cha sos pe cha mi

muer te con - - es pan to pu - bli que mi co ra

zo - n pu bli que mi Co ra zon - - pu bli que mi Co ra zon.

4

*Alto*

Ella qui so ma tar se y yo con  
pa de ci da y yo pro ui re  
so re qar la y mi ti qar sus y ras y  
des pue al se ño ri to al se ño  
ri to le can te una pau li ta u na pau li -

Handwritten musical score on aged paper, featuring two systems of staves with lyrics in Spanish. The notation includes various musical symbols such as notes, rests, and dynamic markings (p, f).

**First System:**

ta y le instrui con estas con estas se qui-  
di llas con y le instru-

**Second System:**

i con estas se qui di lli tas.

**Third System:**

*Mod.to* (Modesto) - Musical notation with a treble clef and a key signature of one sharp (F#).

**Fourth System:**

Ningu no pi da zelos a la que - quiere ninguno pi da -

zelos a la que quiere ninguno

a la que quiere q'erde cir la el Ca'  
y de imprudente pe dir cosa que en  
Por la ense ñanza solo pi do se'

mino de quela pe que q' er  
fada quando ve tie ne pedir  
no rer qua tro pal madas solo

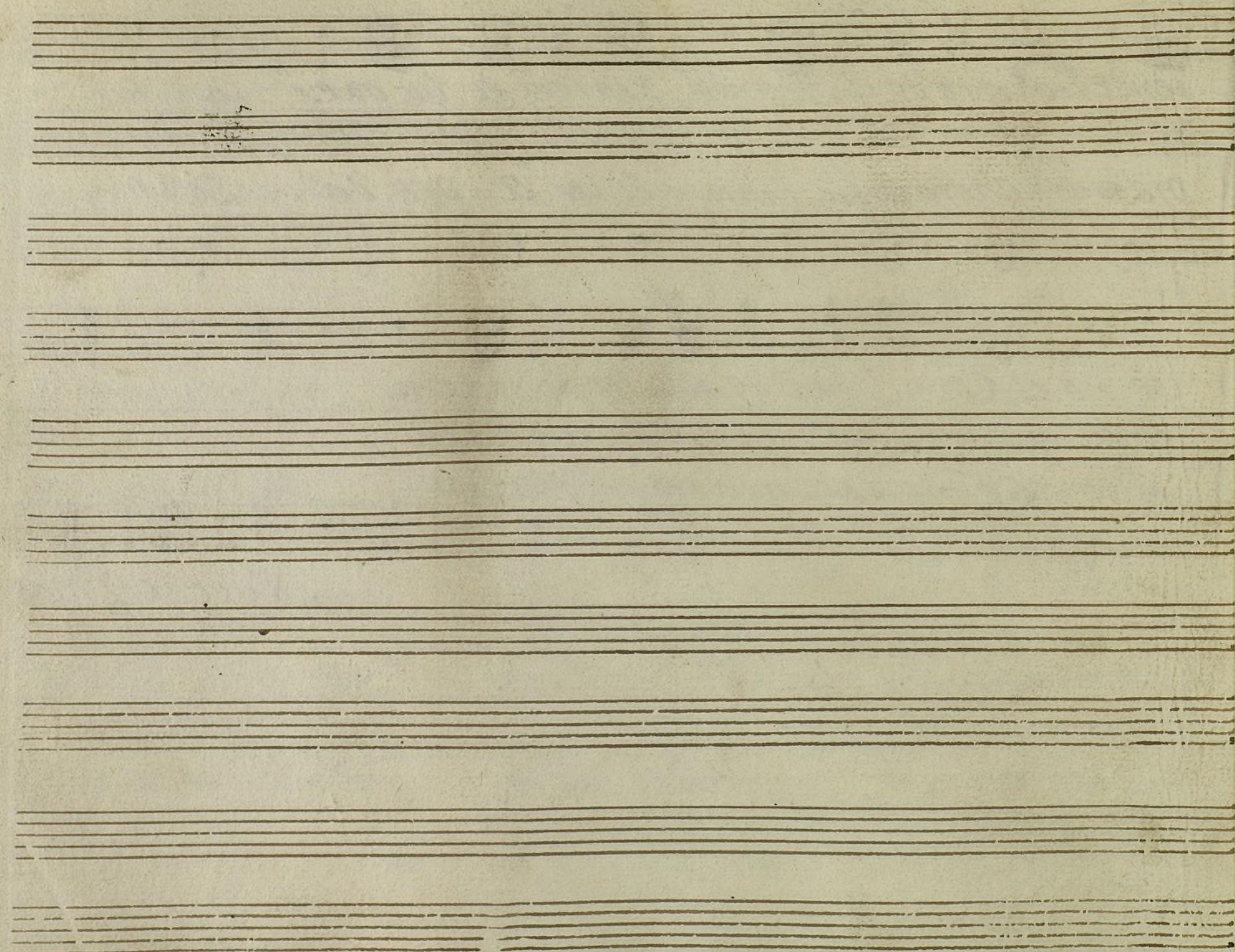
de que la pe que de pues  
 quando se tie ne quando sies  
 quatro pal ma das quatro bien

es mui cierto q. alas muchachas solo les gustan  
 tas ce loso procura atento ver si son justas  
 las me re cen estas leccioner tan pro ve chosas

- cosas veda das - ya viel q. ne cio qui tar pre  
 - tus senti mientos - tu ye vengas no quando te o  
 - pa ra los hombre - si las obser van me da ran -

tende q<sup>o</sup> a todo el mundo traten a le gres las en-  
fende no la ver que fas que es de impru bentes pe dir  
gracia y ahora entre tanto si le a grada solo  
se ña el Cami no de que la pe quen-  
co sa que en fa da quando se tie ne-  
pi do se ño xer qua tro pal ma das.

*Al Segno 2 mas*



Ayuntamiento de Madrid