

Leg.^o D. . n.º 10.

Mus 84-20

t

de Polona

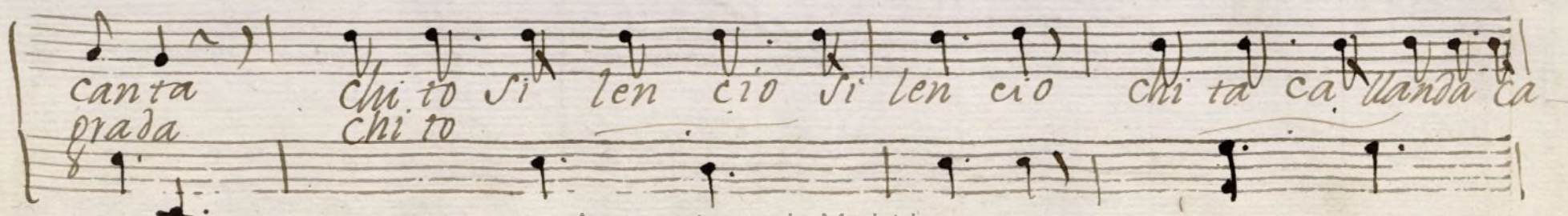
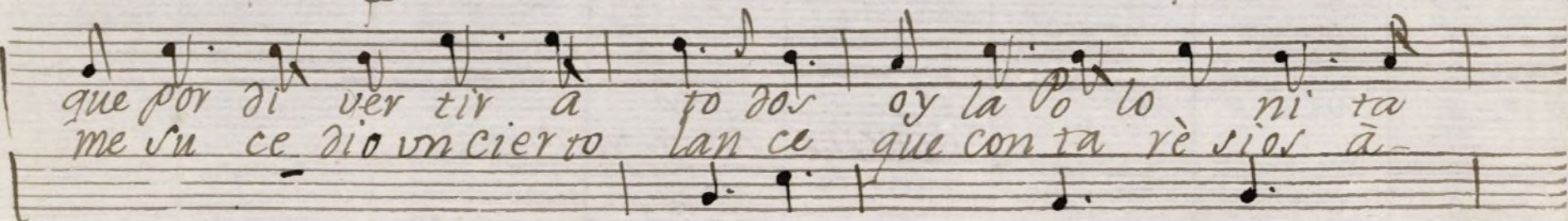
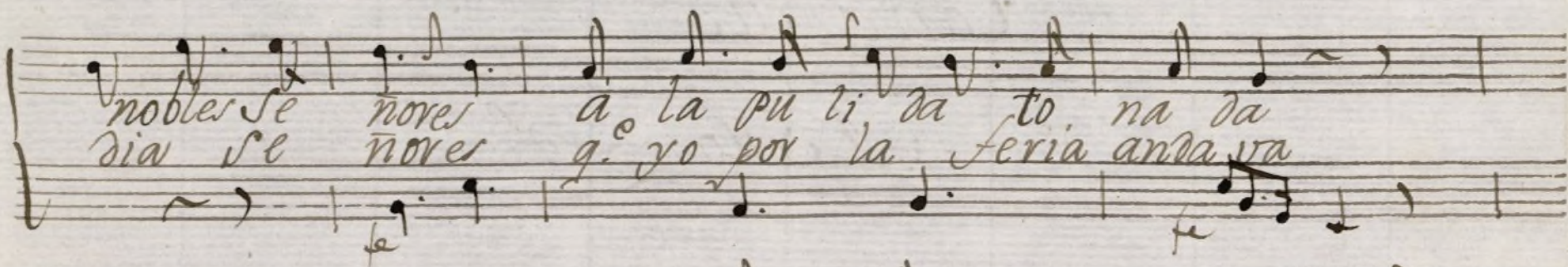
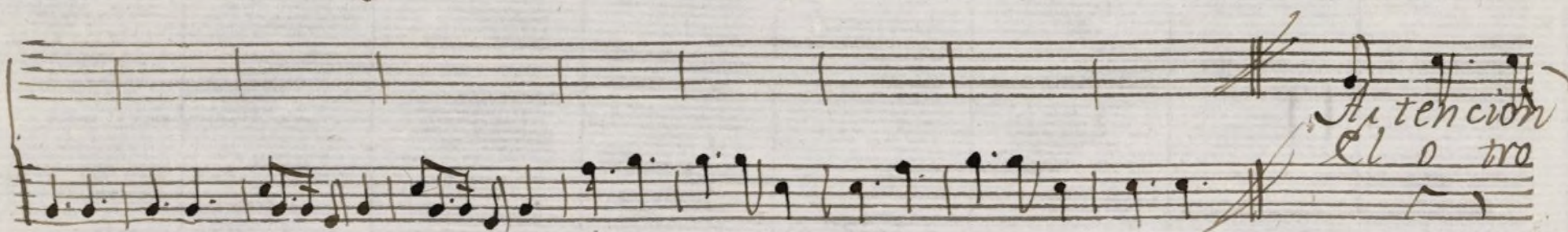
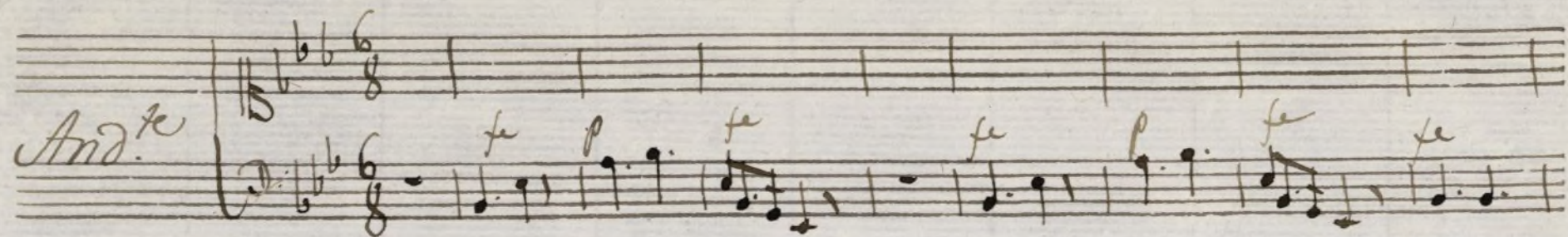
Tonadilla

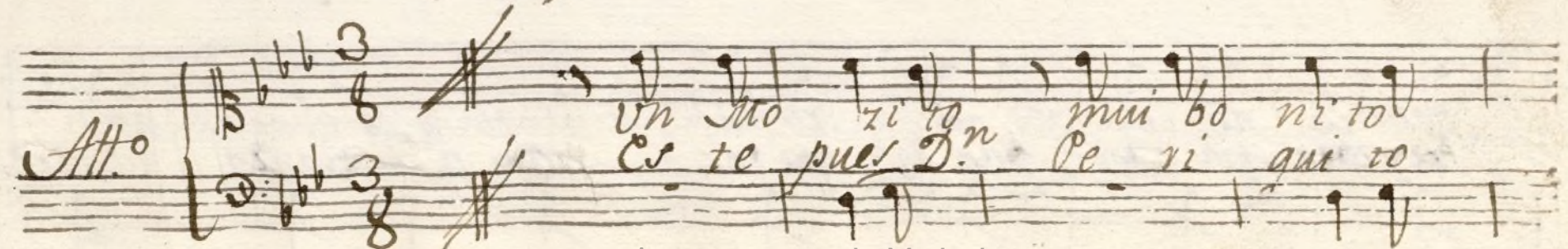
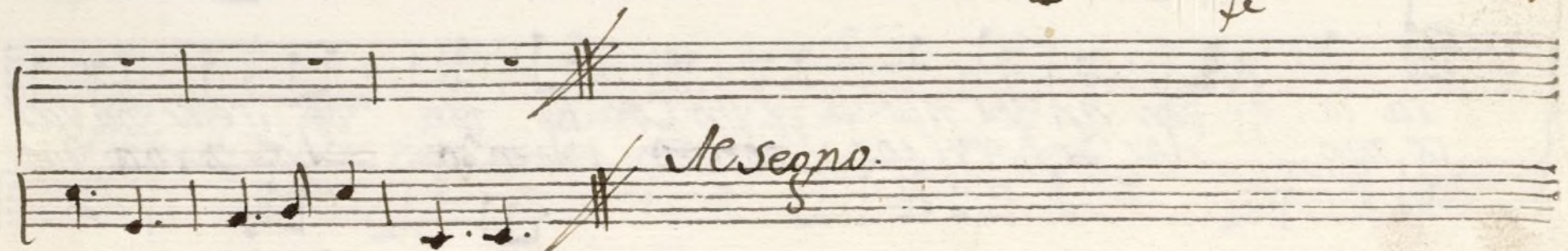
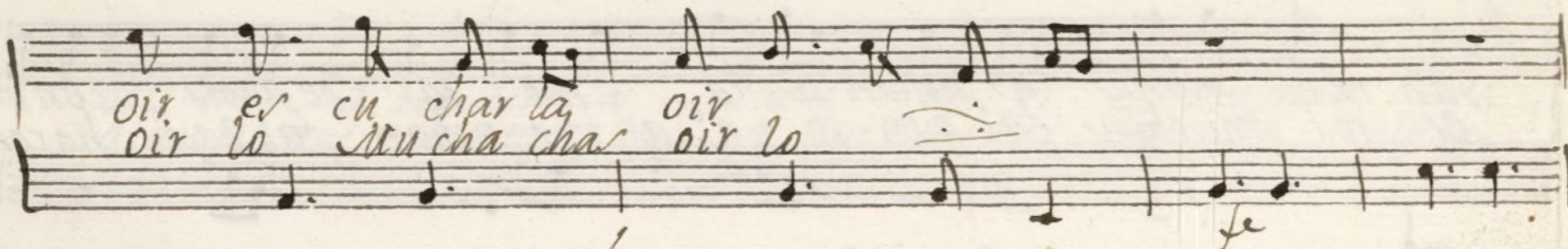
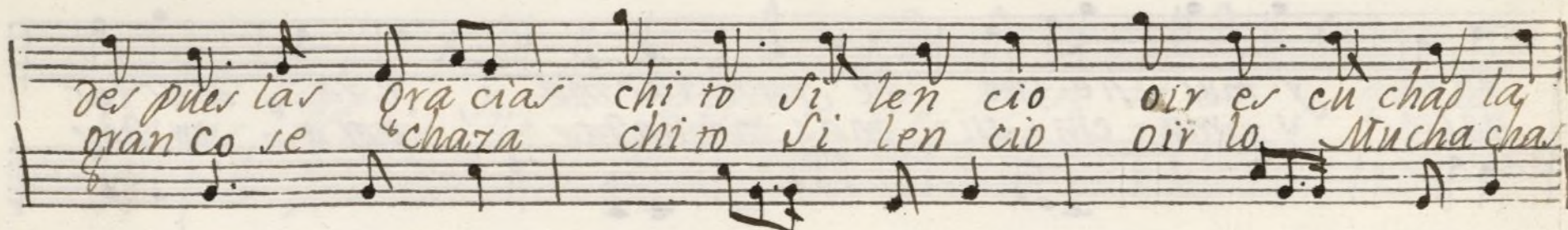
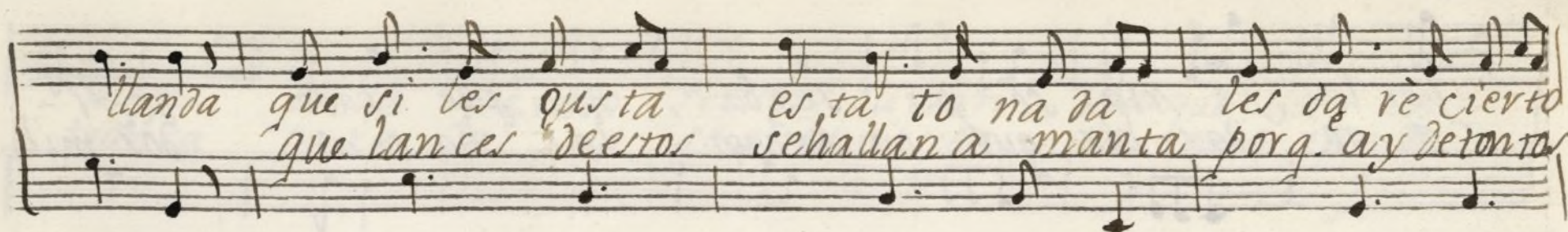
A solo Leg.^o 5.^o n.º 7

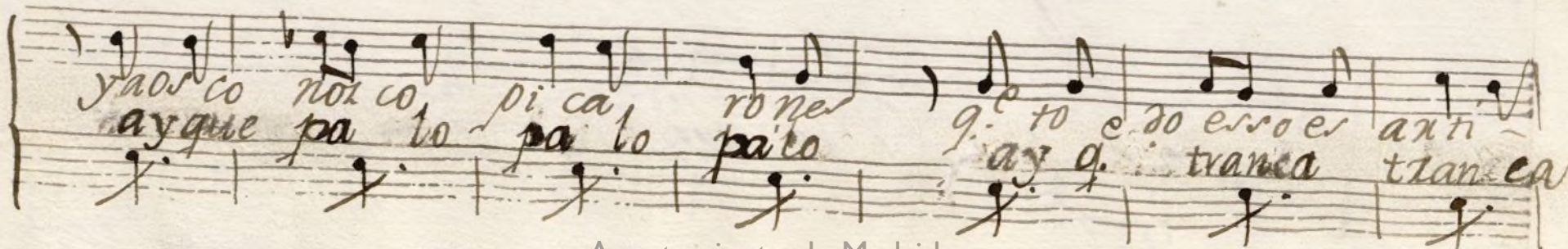
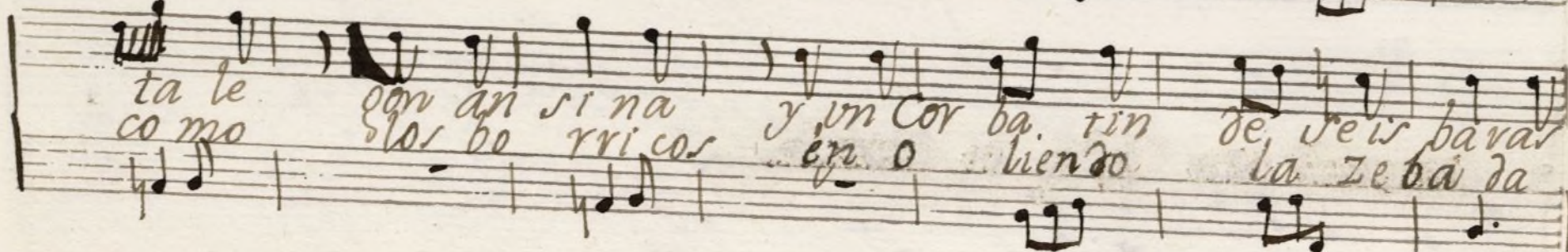
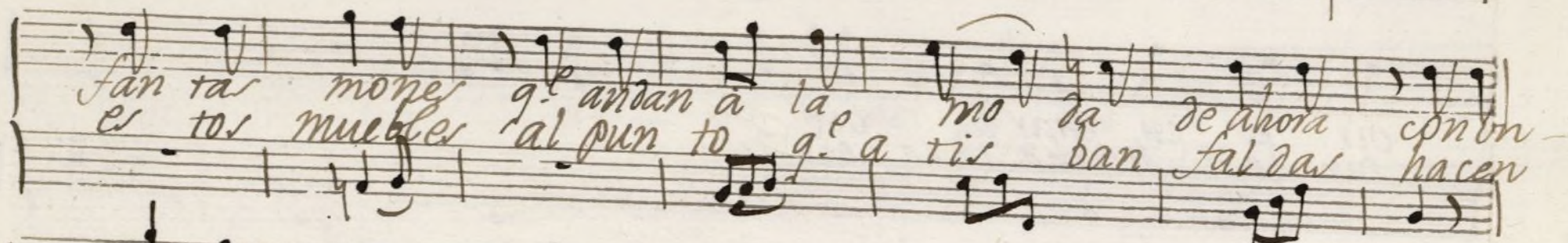
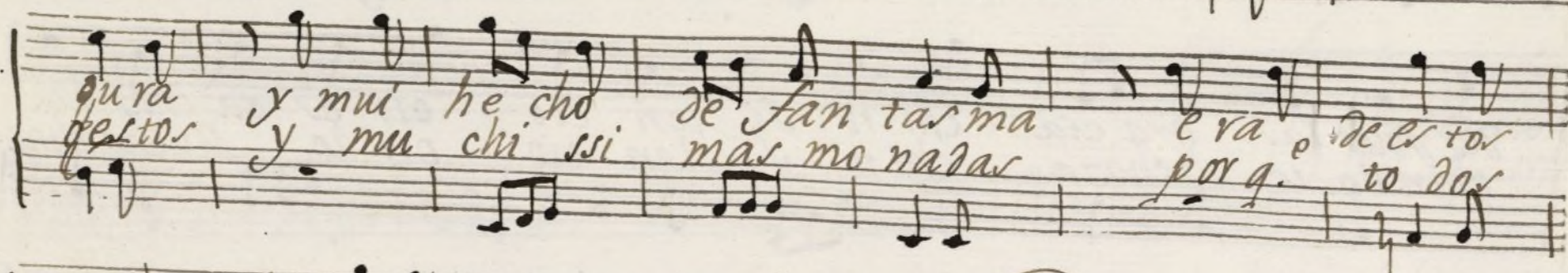
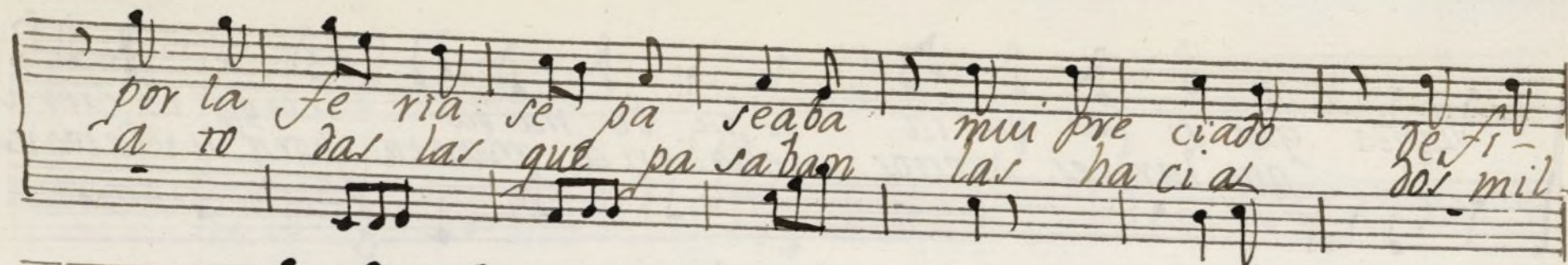
el lance de la feria.

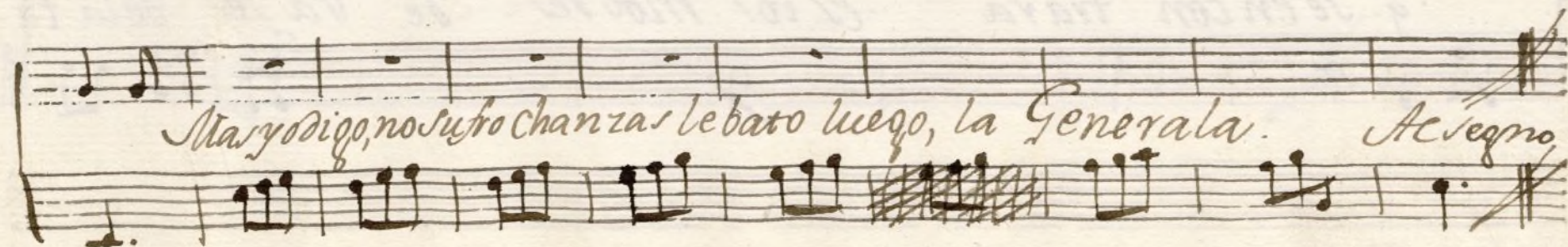
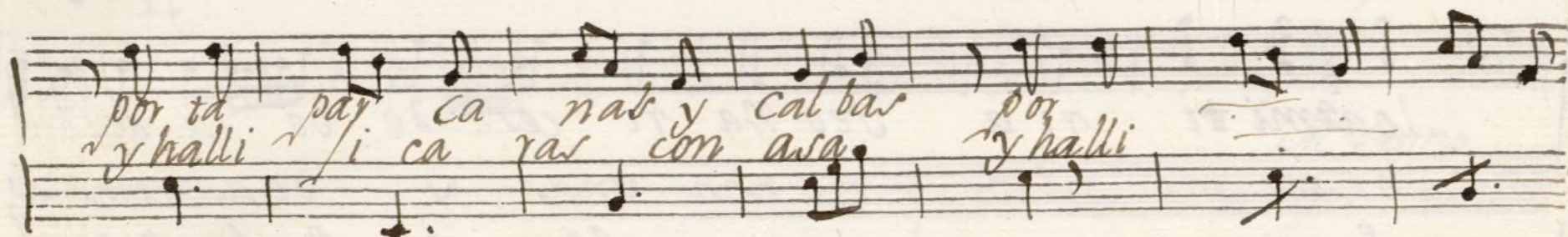
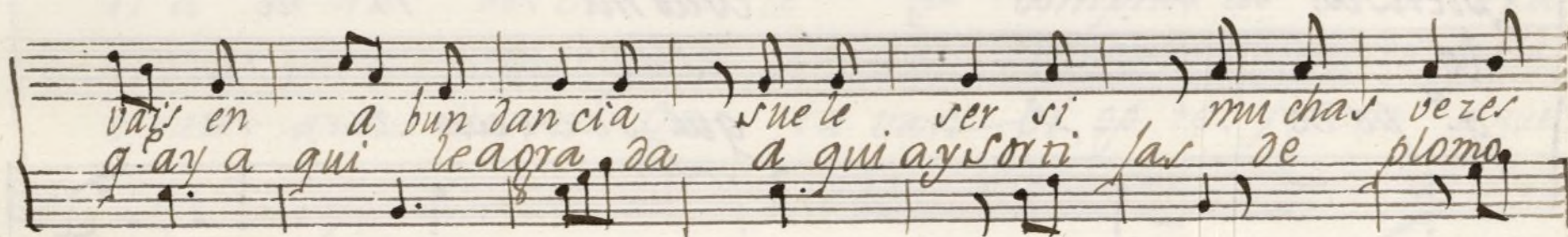
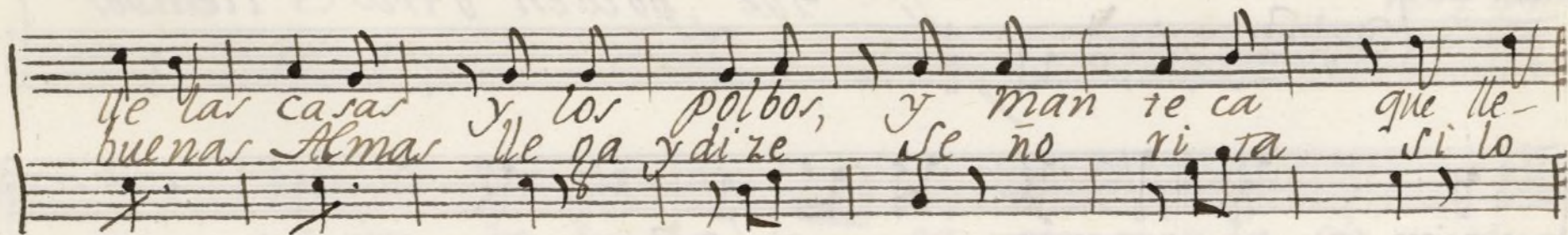
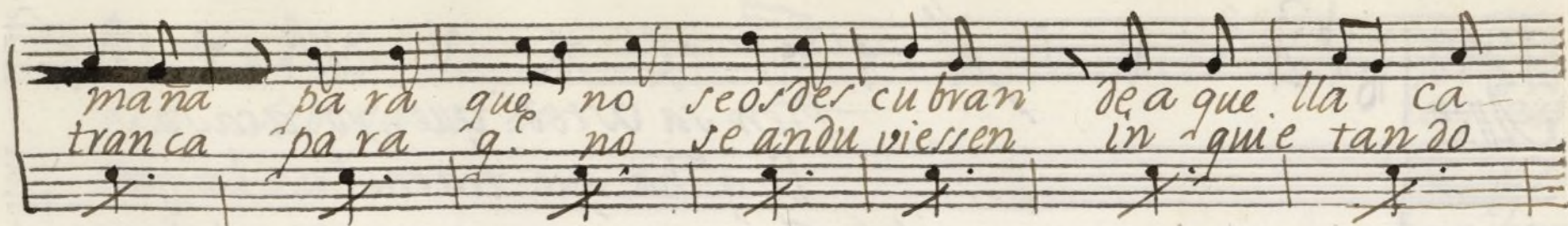


84-20









All.^{to}

Pien sa usted que yo acaso
 lo q.^e ha que traen ta le ga
 Qué poco en otros tiempo.

piensa
 lo
 q.^e po co

lo ad mi ri ri - a.
 es to mo ni - to
 que se en con tra - ra

lo ad mi ri ri a se o na ri ces de bo la del ote -
 es to mo ni to tie nen una y de a como to -
 q.^e se en con trara es to mol des de Pa / se de la ta -

ria se na xi cer
 niños tienen
 rasca es to

log. que
 no fuera
 hag. hombres

ria e ra de su ta le ga comprar la cria era
 malo darles unos a zo ter de quando en quando darles
 eran a que llos q. q. ta van bi q. te. y pera a que

de
 uno
 llos

Al sepro
 dos erras

Allo

Quedo se el pobre te a si ta ma ñito y yo ha cia mi-

fe fe

f
fe
se
p
 casa a ga rro el camino si len cio cui da do q.^o a un q.^o sea con-
 7 9 7 9 7 9 7 9 7

chudo bar la Segui di'lar con que fi na li zo con

que fi na li zo.

Handwritten musical score for 'Ayuntamiento de Madrid'. The score is written on two staves. The top staff begins with the tempo marking 'And. no vivo.' and the key signature of three flats (B-flat, E-flat, A-flat). The bottom staff begins with a treble clef and a 3/4 time signature. The music is written in a cursive, handwritten style. The title 'Ayuntamiento de Madrid' is written in a simple, printed font at the bottom of the page. The word 'un Memo' is written in a cursive script at the end of the top staff.

rial pre tendo oy presen ta ros oy pre sen ta ros oy presen
 ta ros quenta que ri dos mi or quenta con
 der pa charlo se ñores la po lo nia que
 rida a bues tros pier por trada di ce q. ha mu cho
 tiempo q. en ser vi ros se a fana por lo que les su-

pli' ca q.^{er} en esta tempo rada si no ha cierta a ser -

vi ros di si mu lei sus fal tar q.^{er} es fa -

bor q.^{er} de sea mer ced q.^{er} a guar da.

Y asi mi alma
sea la primer prueba
dãr do s pal ma das.

Volin 1^o Ton.^a a sdo el lance de la feria.

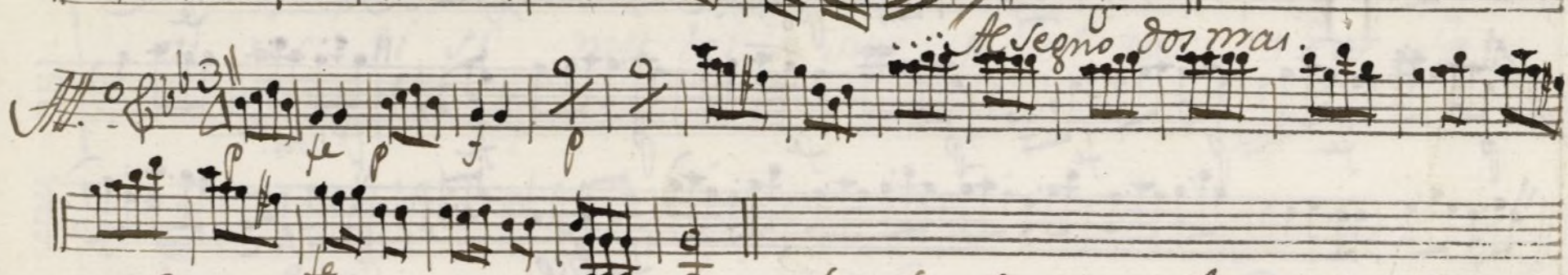
Mus 84-20

And.^{te}

Al Segno.

m.o. fe

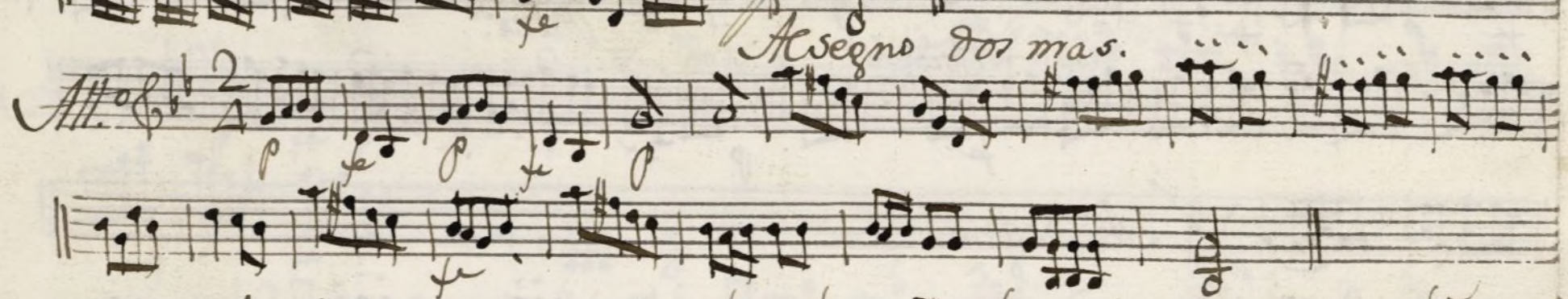
Al Segno.



Violini 2.^o Ton.^a solo el lance dela feria.

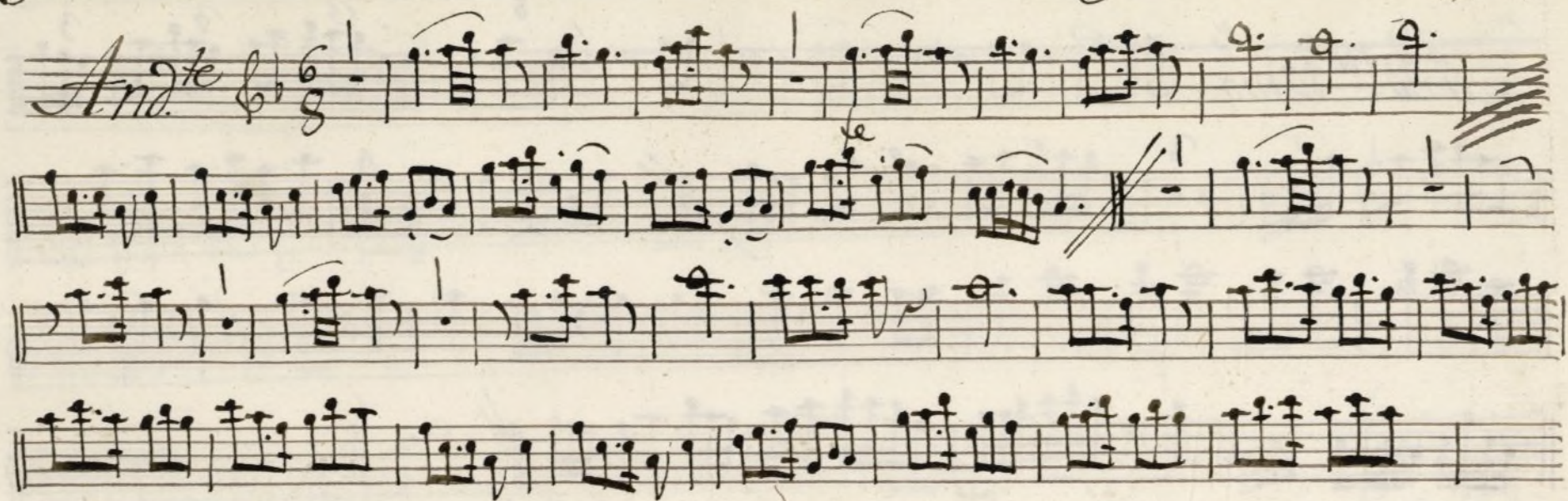
Mus 84-20

Handwritten musical score for Violini 2.^o (Violin 2), Ton.^a solo el lance dela feria. The score is written on ten staves, organized into two systems of five staves each. The first system begins with the tempo marking *And.^{te}* and the key signature of two flats (B-flat and E-flat). The music is in 6/8 time. The second system begins with the tempo marking *Al Segno.* and the key signature of one flat (B-flat). The music is in 3/8 time. The score includes various musical notations such as notes, rests, and dynamic markings (*p*, *f*, *Arco*, *Punt.^o*). The manuscript is on aged, slightly stained paper.



Flauta 1.^a Ton.^a Solo el lance de la feria.

Mus 84-20,



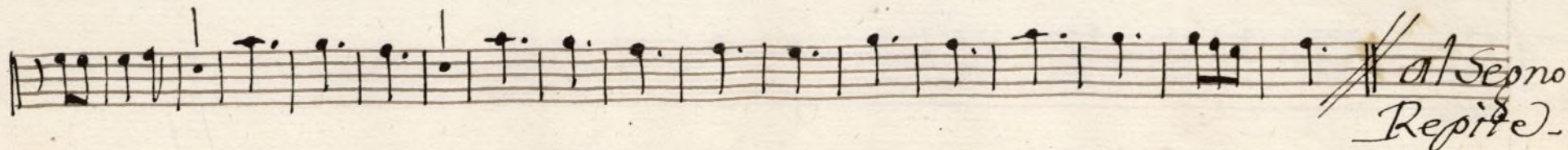
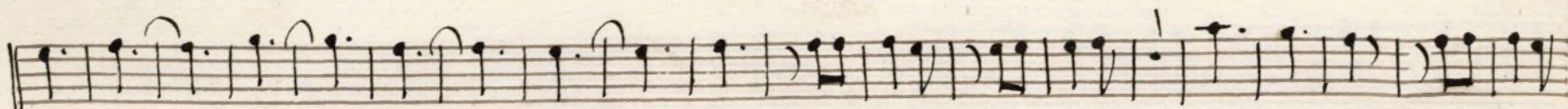
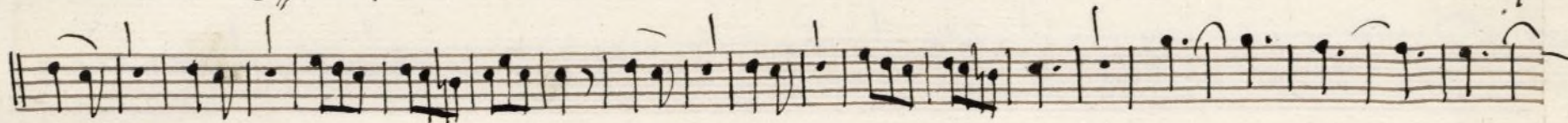
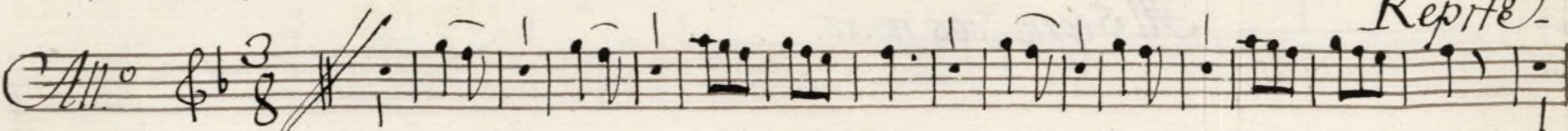
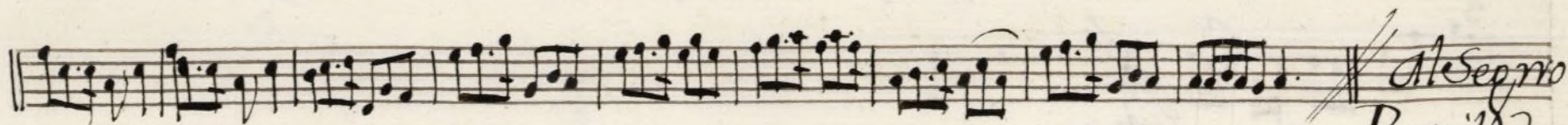
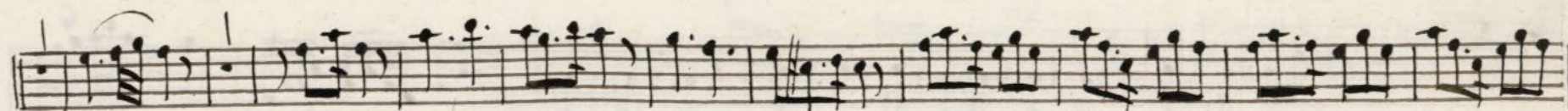
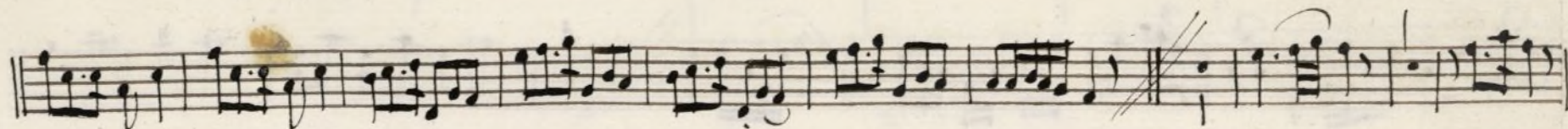
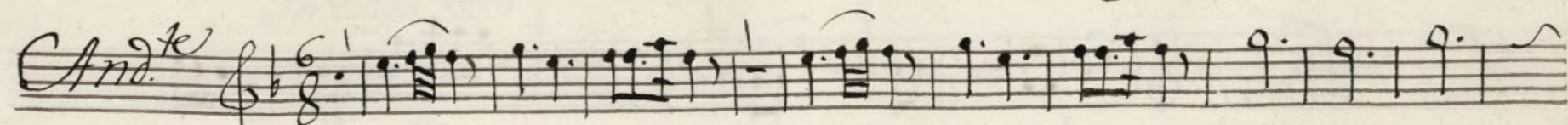
Tacet hasta las Seq.³

Handwritten musical score for a piece titled "And. no. Vivo." in 3/4 time. The score consists of four staves of music. The first staff begins with the tempo marking "And. no. Vivo." and the time signature "3/4". The music features various note values, including eighth and sixteenth notes, and rests. There are several triplet markings (indicated by a "3" over a group of notes) and a section marked with a "4" over a group of notes. The piece concludes with a double bar line, and the instruction "Al Segno." is written below the final staff.

Al Segno.

Flauta 2^a Ton^a a solo et lance de la feria

Mus 84-20

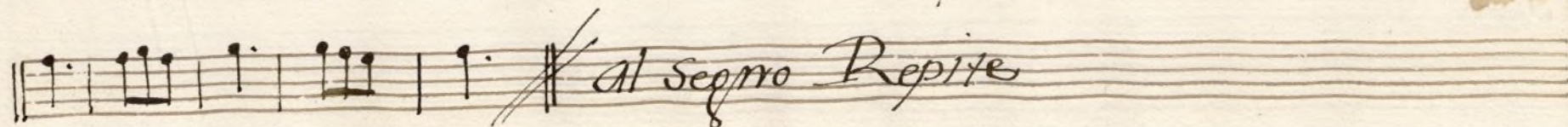
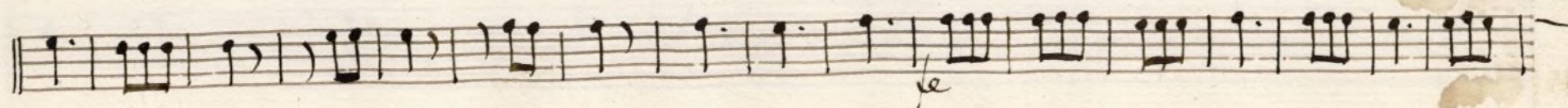
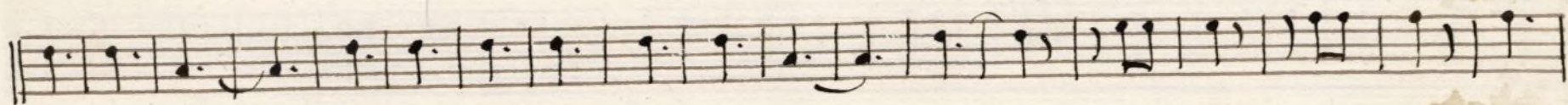
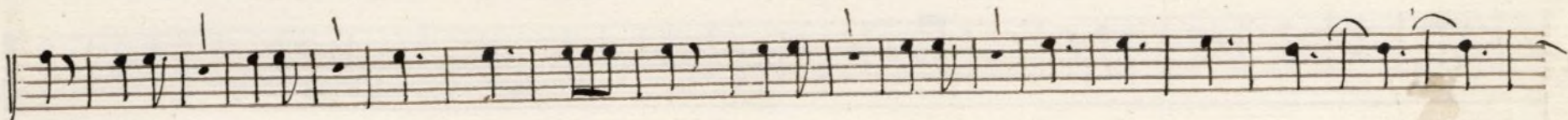
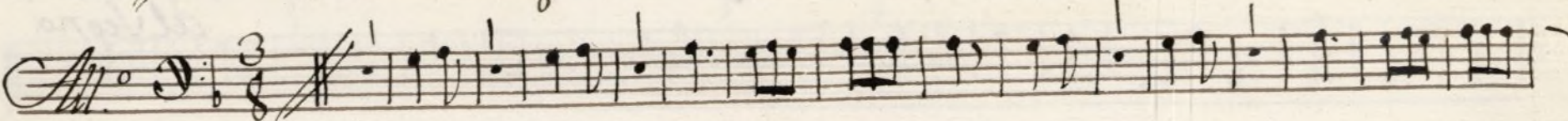
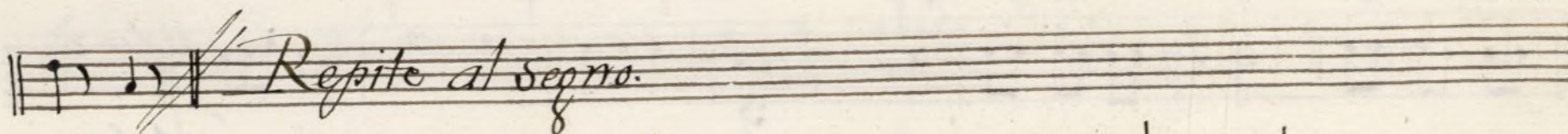
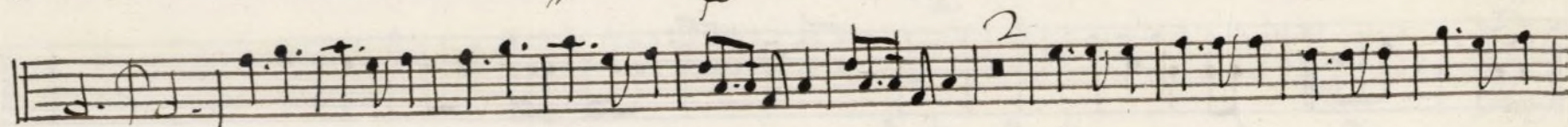
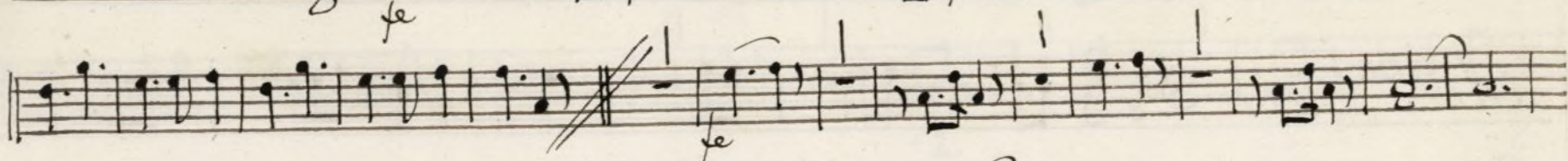
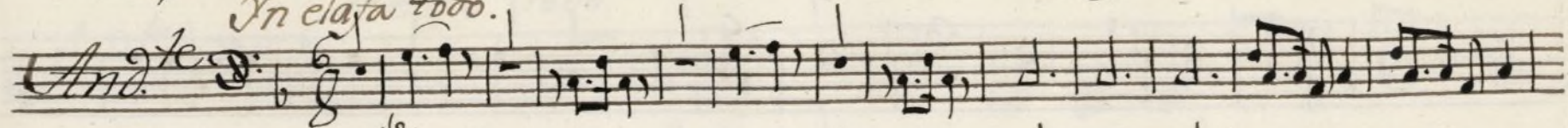


Tacet hasta las Sepuidillas

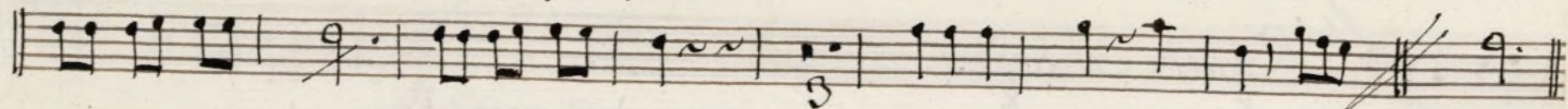
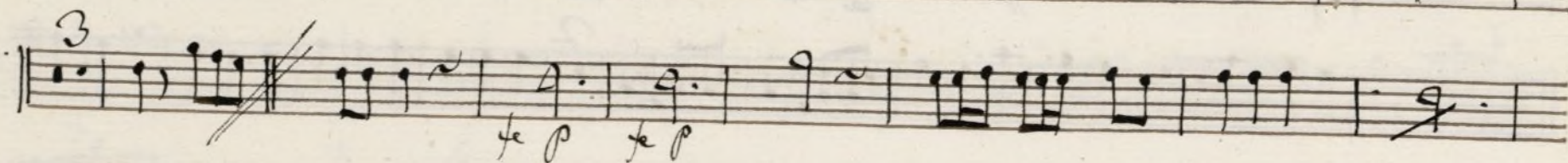
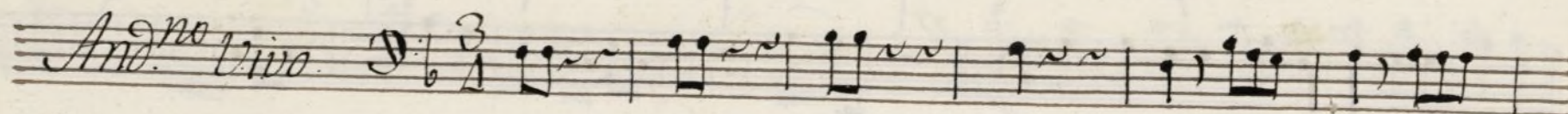
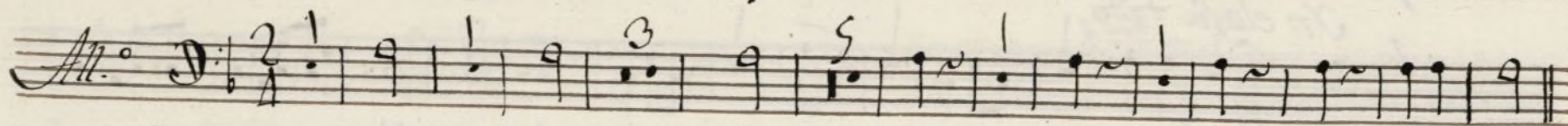
Ayuntamiento de Madrid

Trampa 1^a ton. a Solo el lance dela feria.

And.^{te} In clafa todo.



Tacet las Coplas.



al Segno.

Trompa 2.^a Ton.^a Solo el lance de la feria.

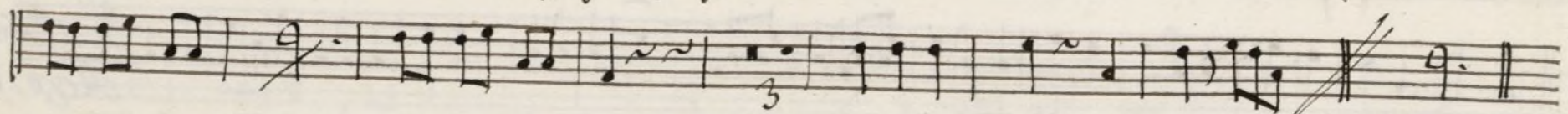
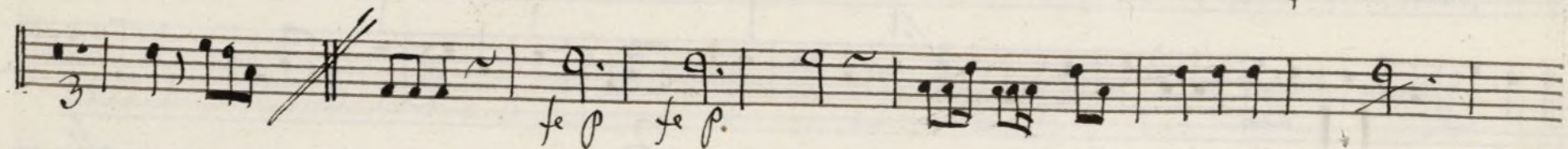
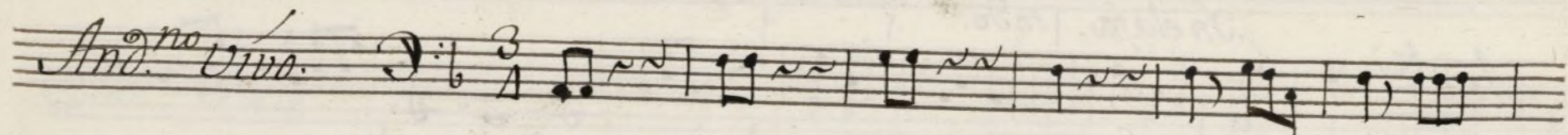
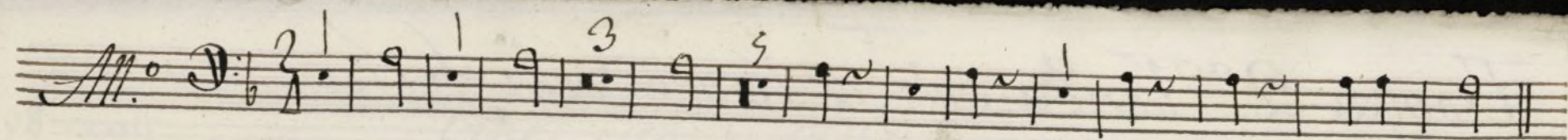
Mus 84-20

And.^{te} In elafa. | todo.

Allegro

al Segno Repite.

Facet las Coplas.

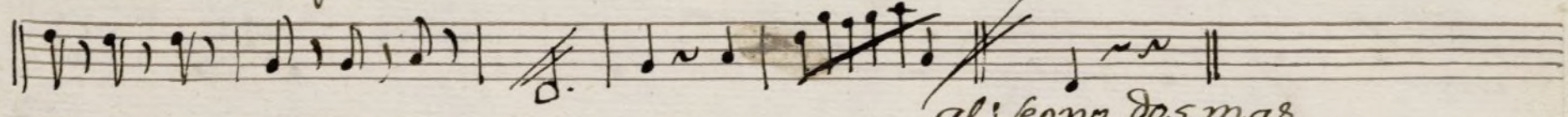
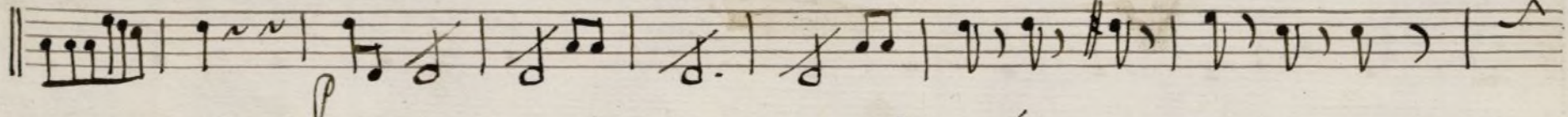
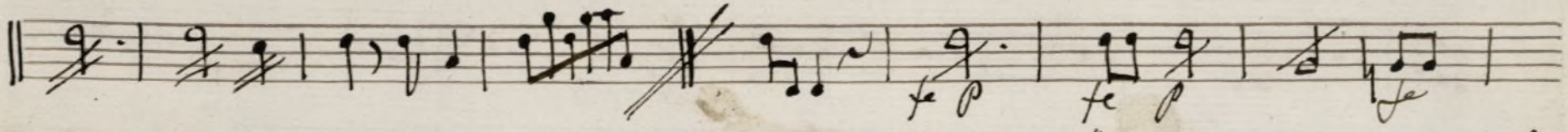
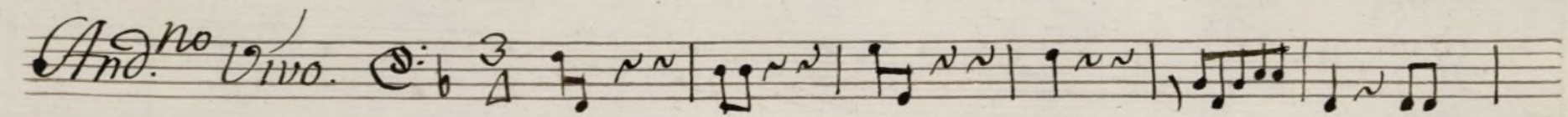
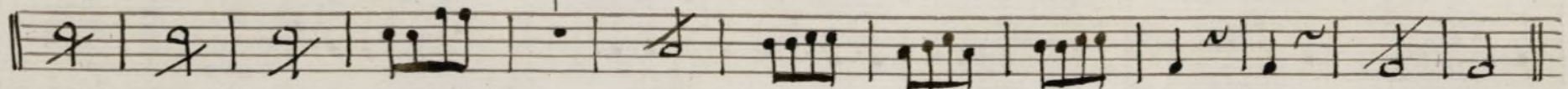
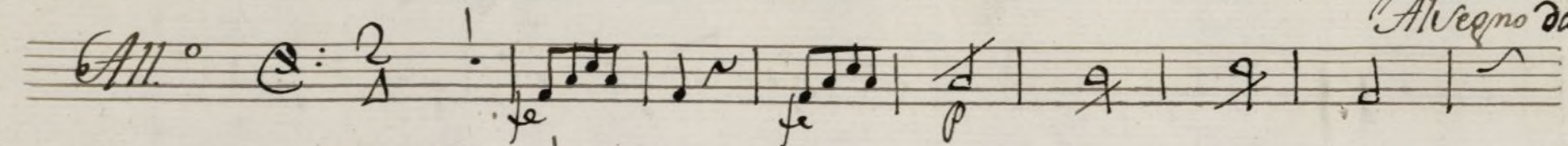
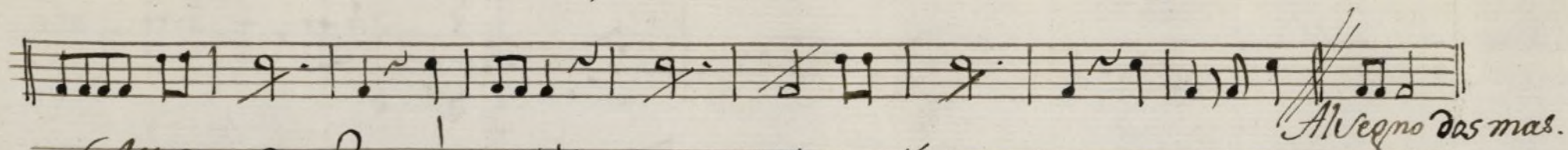
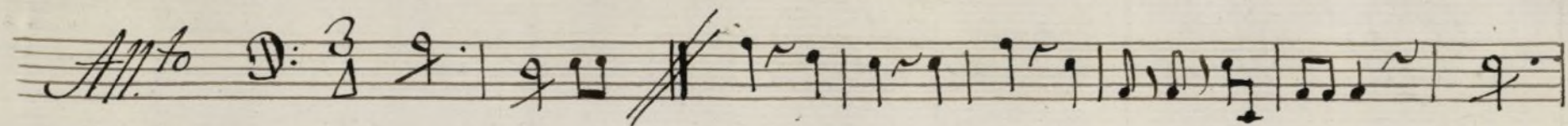


Al Segno.

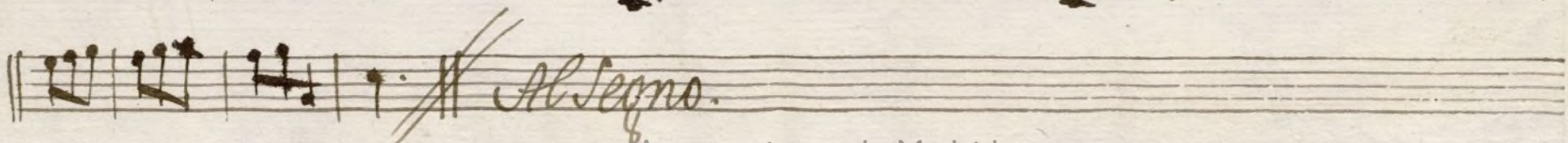
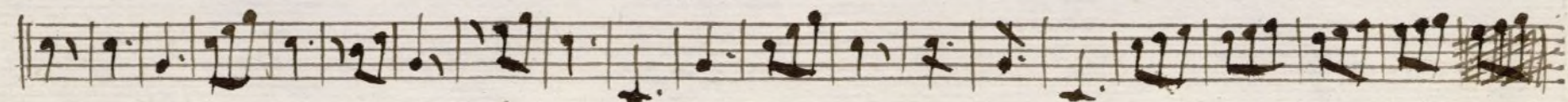
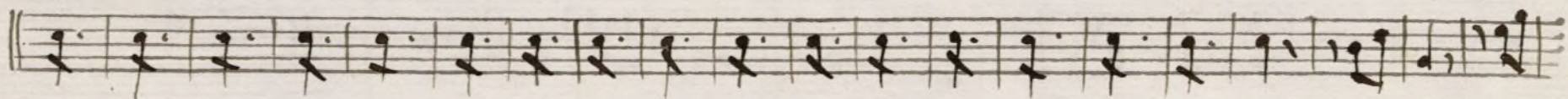
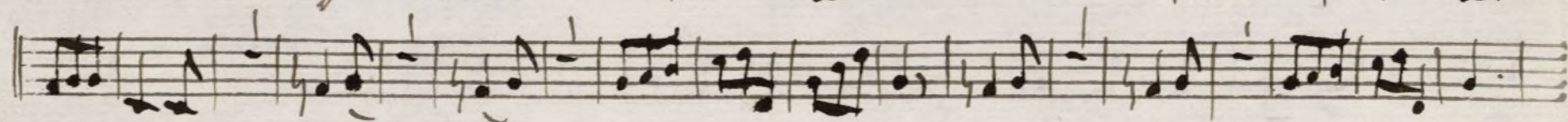
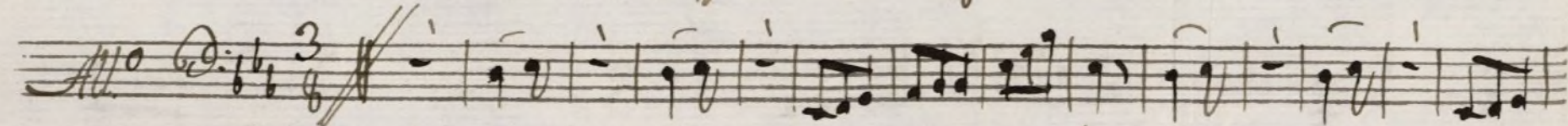
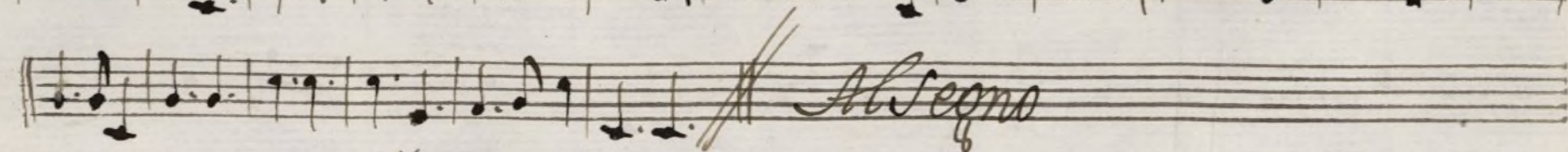
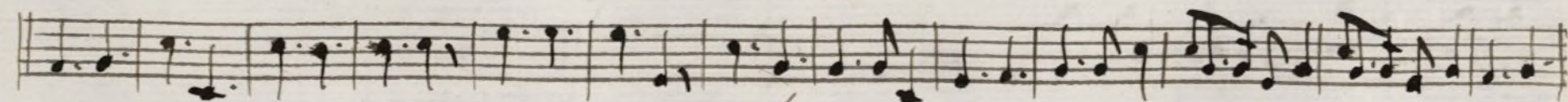
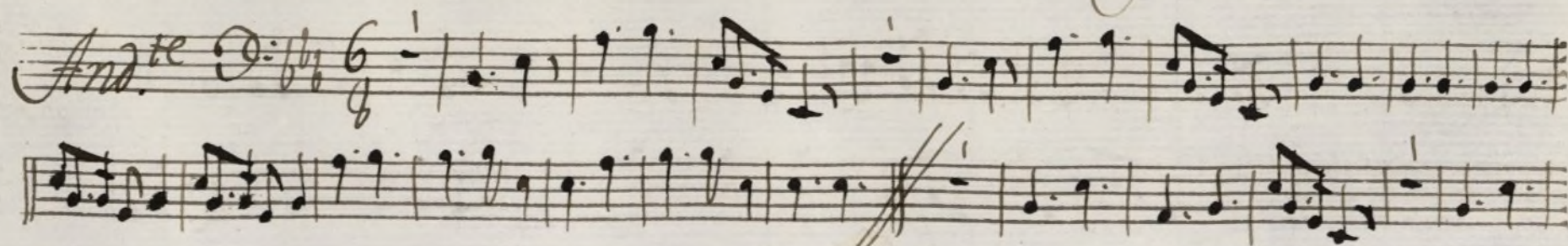
Bajo Ton.^a a Solo el lance de la feria.

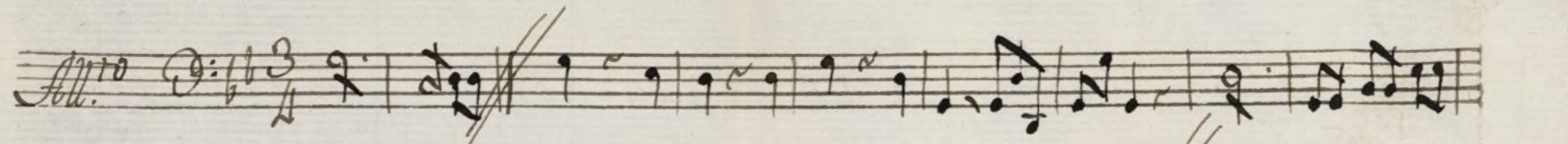
Mus 84-20

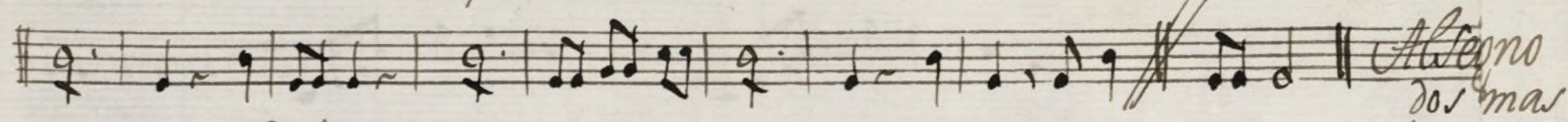
A handwritten musical score on aged paper. The first system is marked 'And.' and is in 6/8 time. It features a melody with eighth and sixteenth notes, and a bass line with eighth notes. The second system continues the melody and includes a repeat sign. The third system is marked 'Allegro' and is in 3/4 time. It features a melody with eighth and sixteenth notes, and a bass line with eighth notes. The fourth system is marked 'Allegro Repite' and is in 3/4 time. It features a melody with eighth and sixteenth notes, and a bass line with eighth notes. The score is written in brown ink on aged paper.

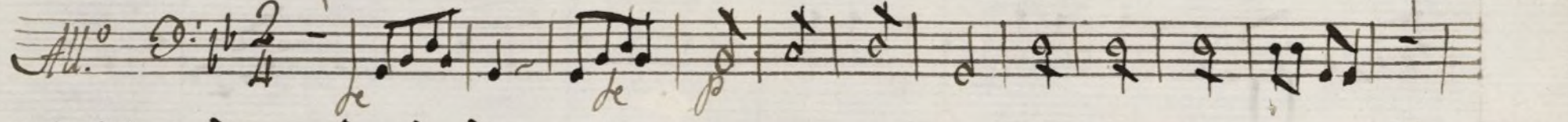


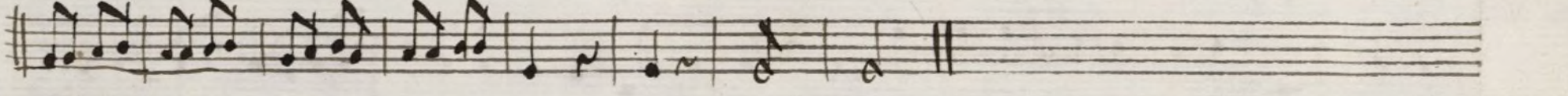
Bajo. Ton^a a Solo et lance de la feria.



All.^o $\text{G:} \flat \flat \frac{3}{4}$ 

 *Allegro*
do mas

All.^o $\text{G:} \flat \flat \frac{2}{4}$ 



And.^{no} vivo. $\text{G:} \flat \flat \frac{3}{4}$ 