

Leg.º 6 = n.º ~~25~~ 16

(Leg.º 5.º n.º 14) +

Mus 84-14

Tonadilla

à solo

14

de las Seguidillas

Con Viol. y Trompas.

D65 -

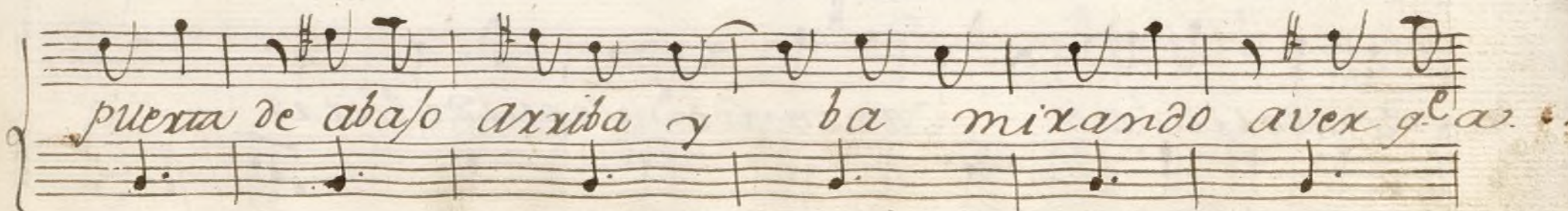
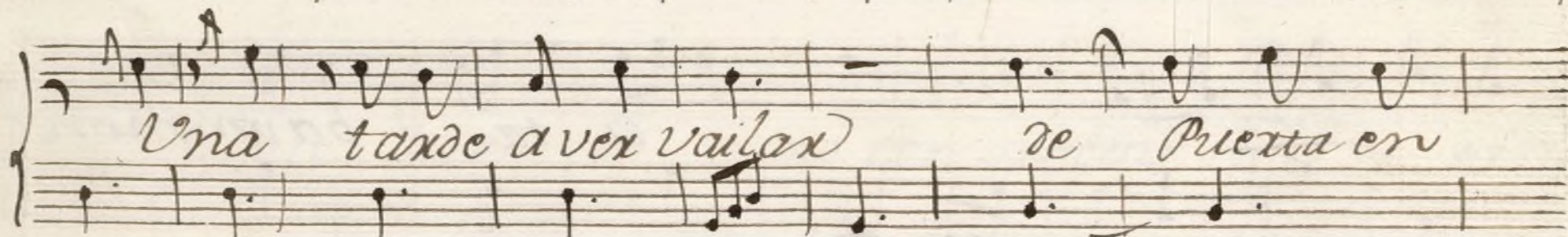
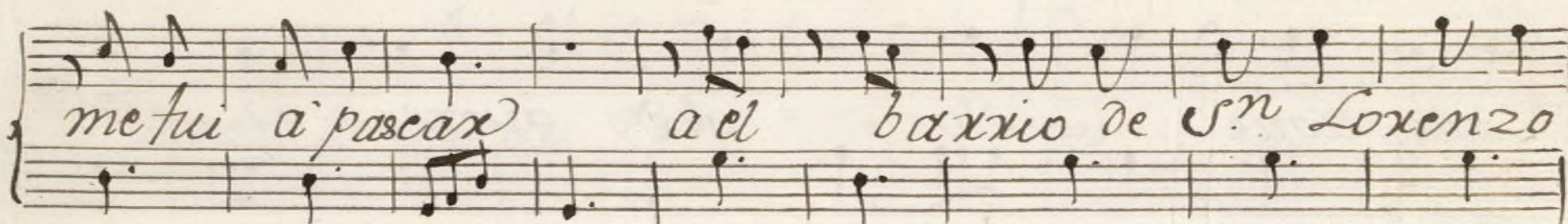
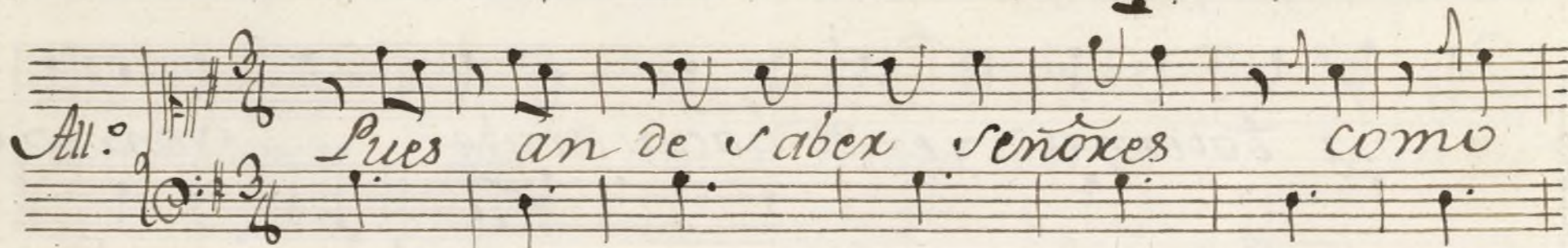
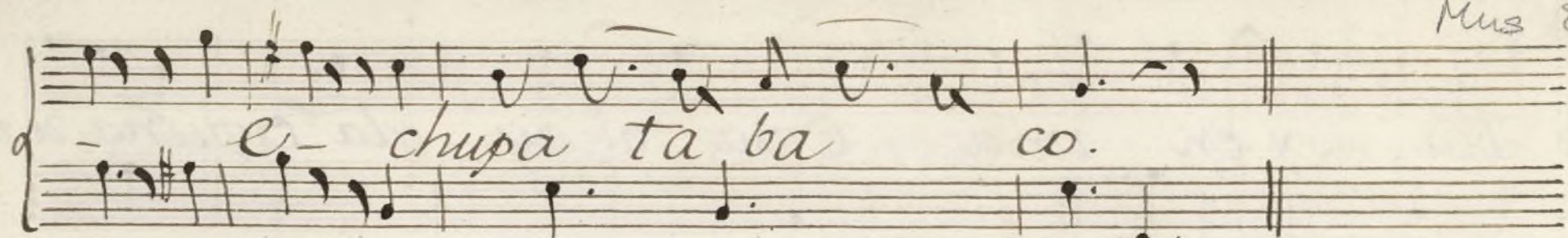
Desp.^o

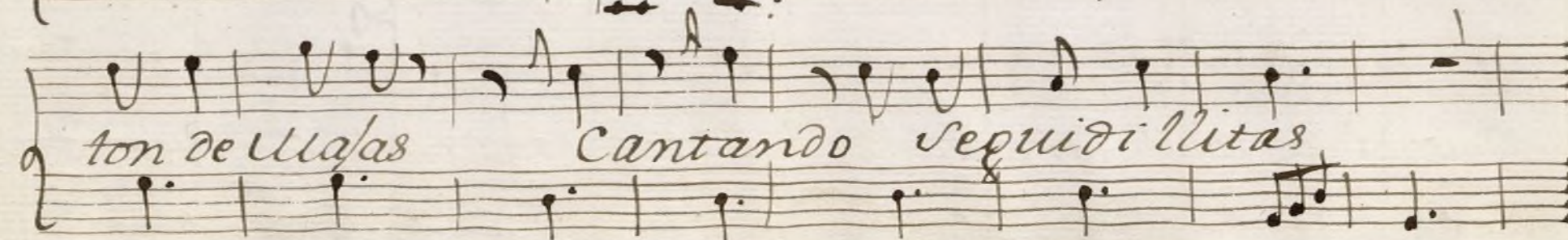
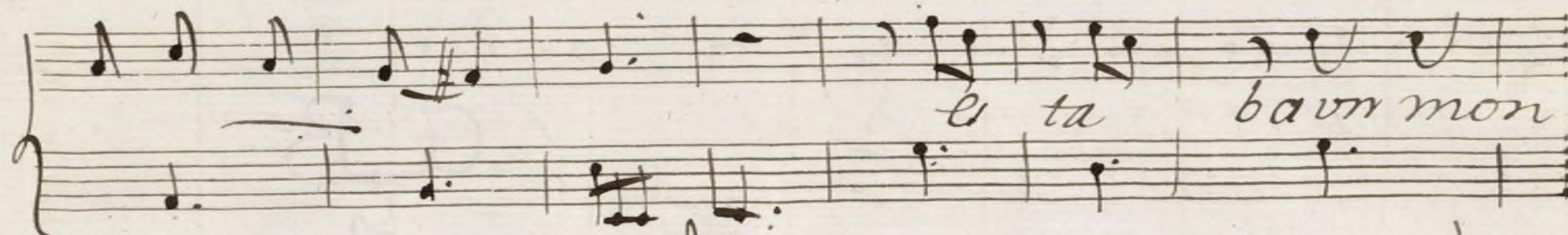
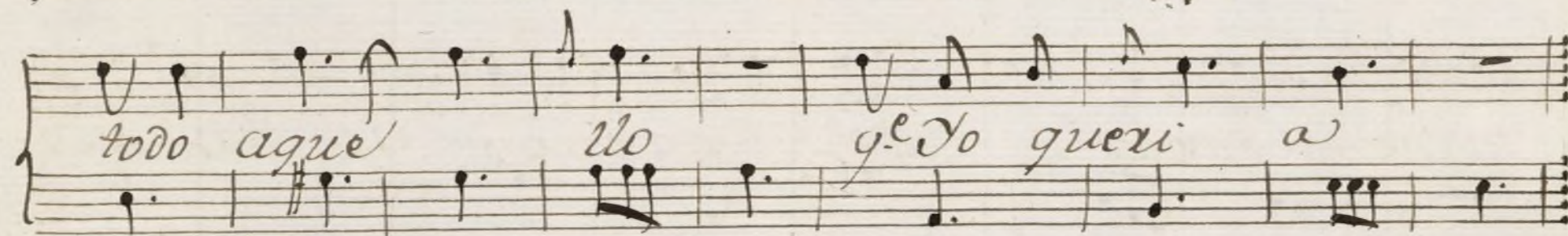
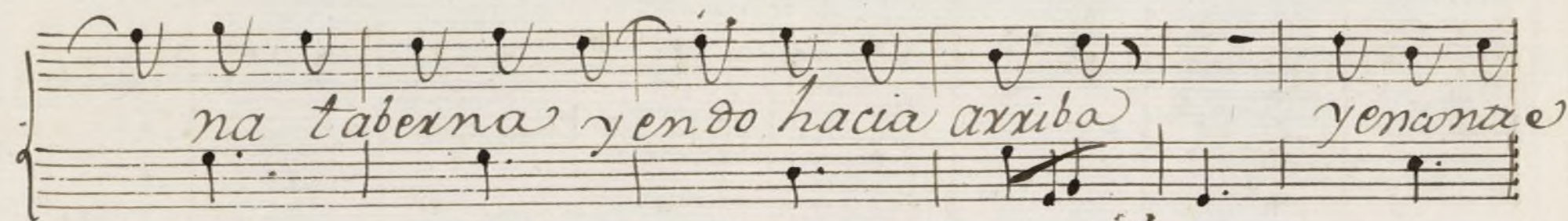
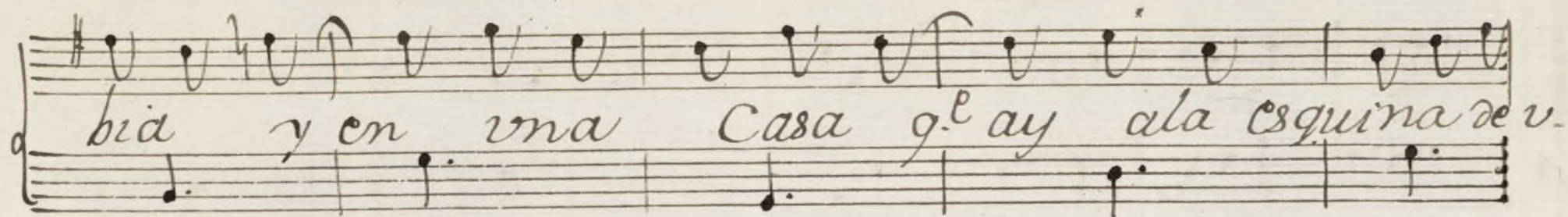
Oigan una tonadilla moiguete xito a

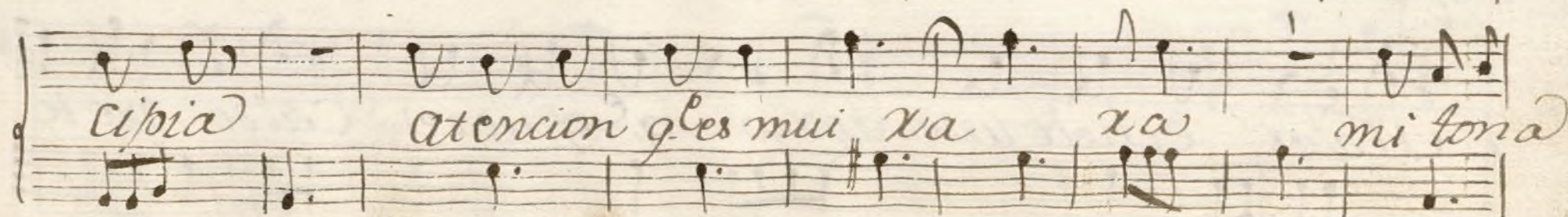
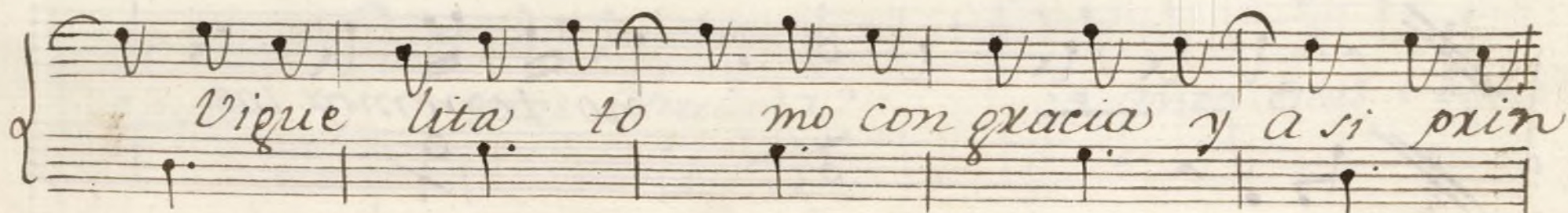
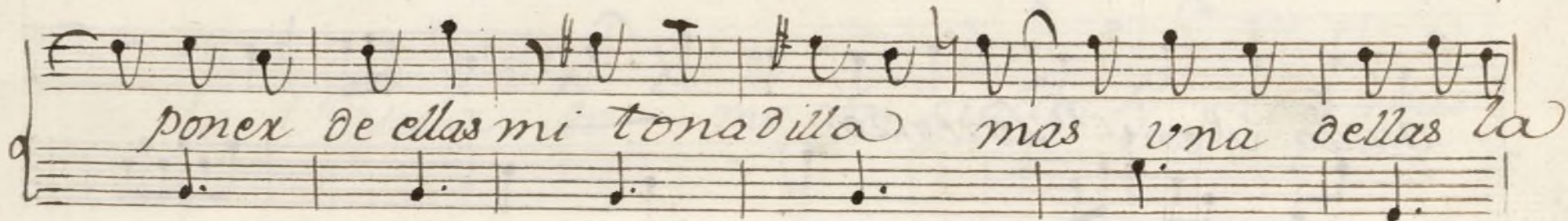
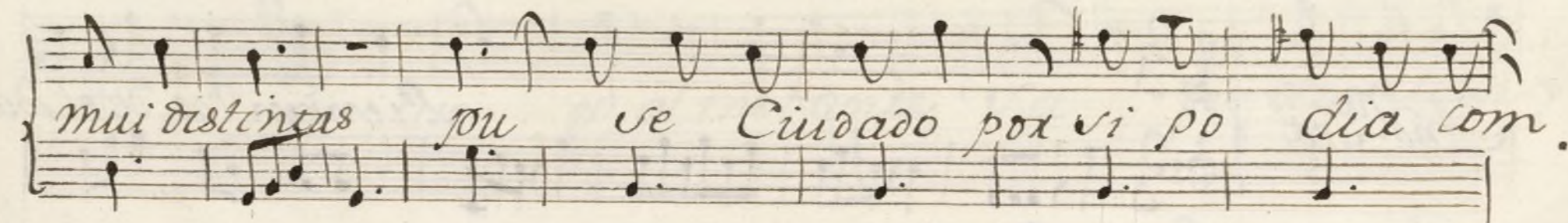
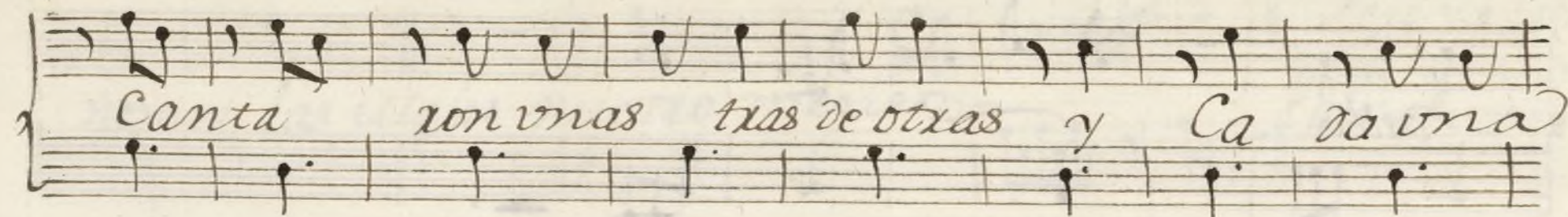
manos q' la aprendi el otro día de Sⁿ Lorenzo en el

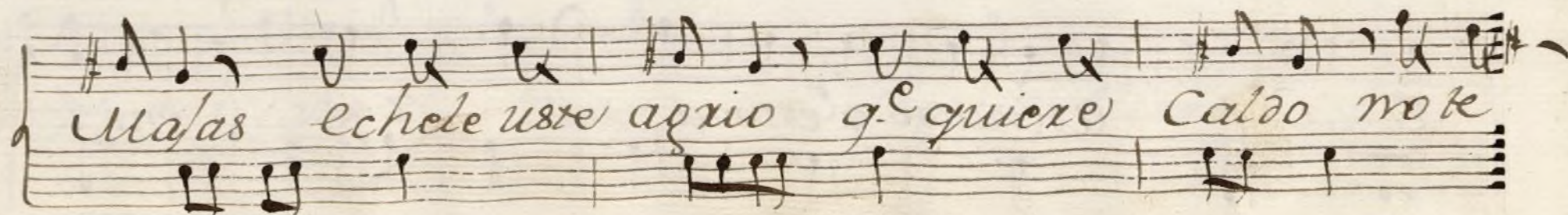
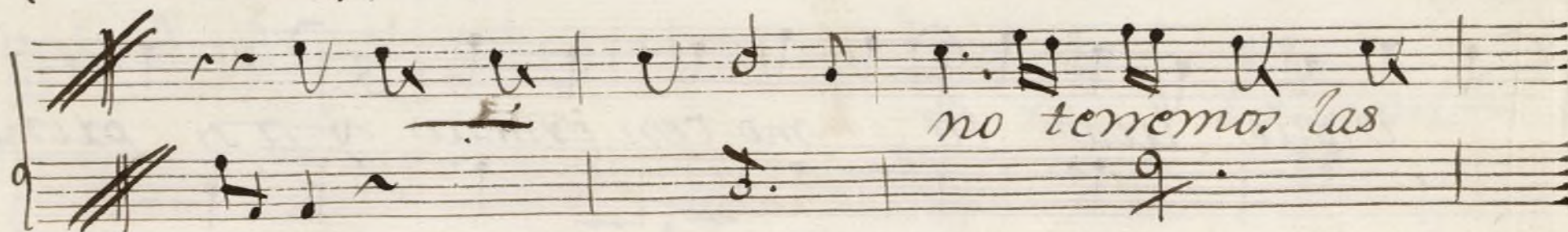
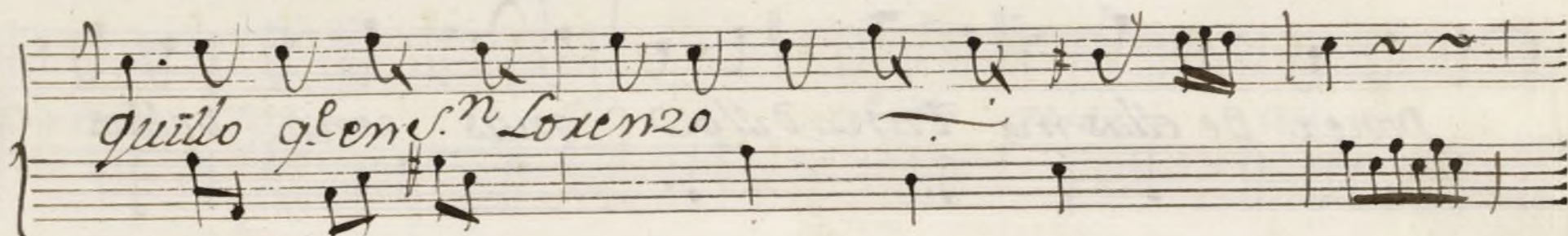
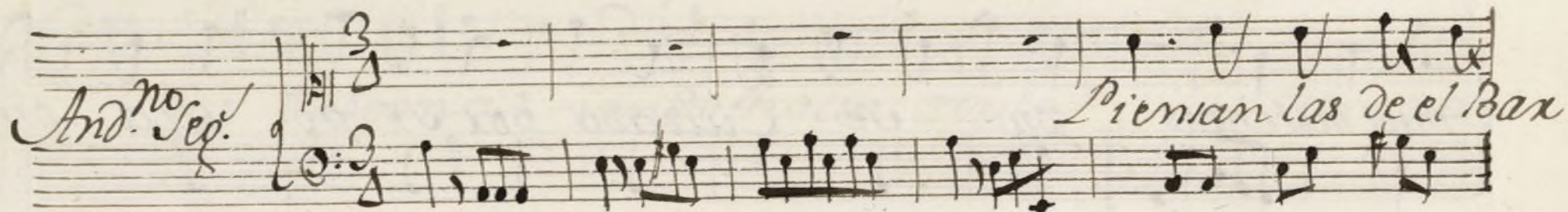
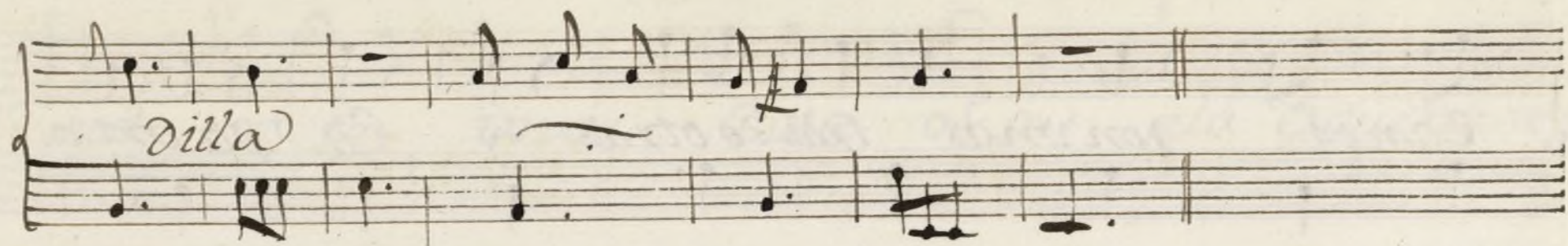
barrio oiganla con silencio tengan Cuidado

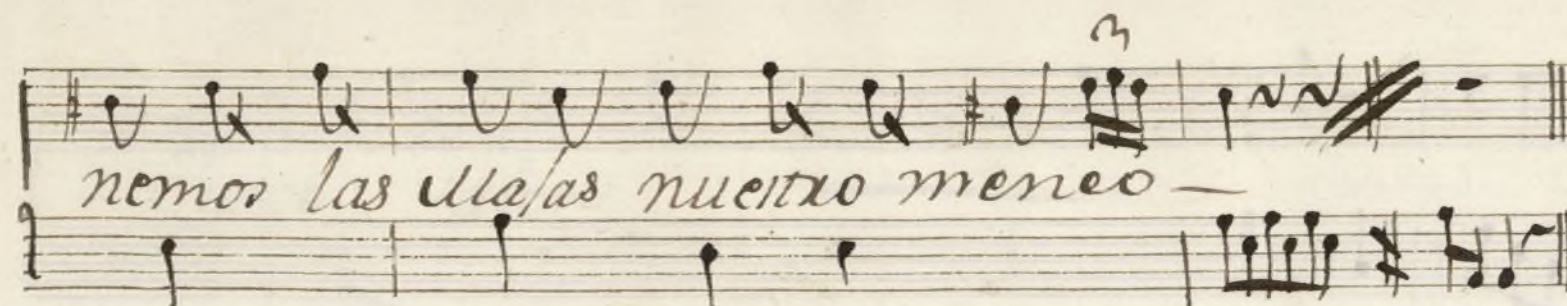
q' aquesta tonadilla chupa tabaco si

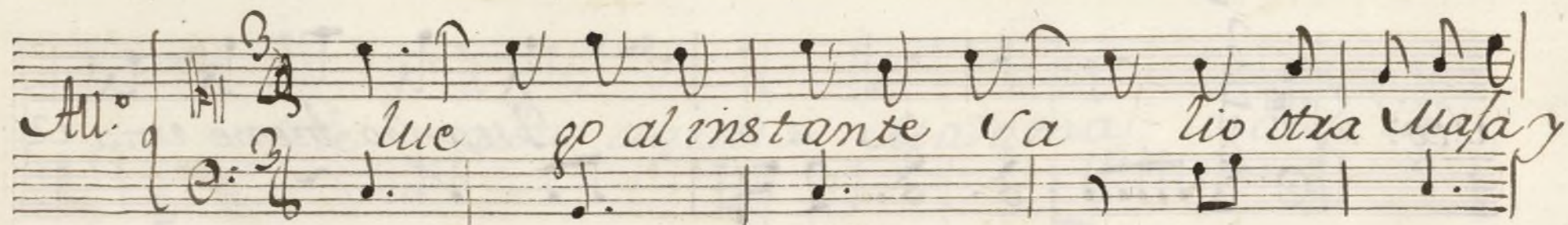


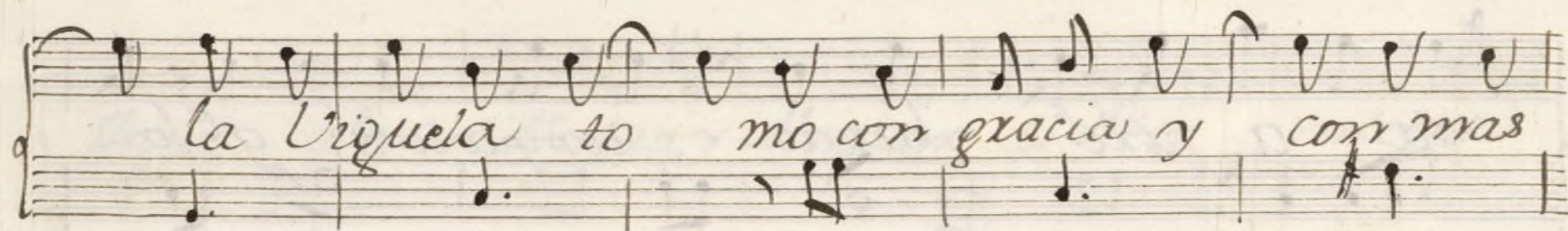


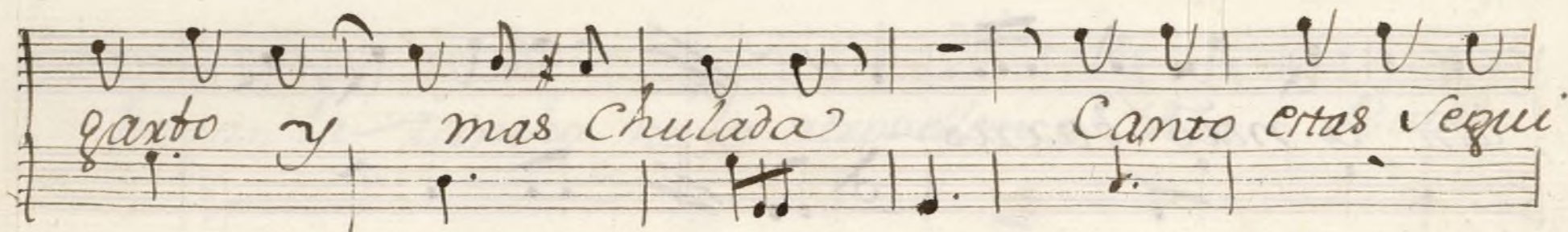





 nemos las llamas nuestro meneo — *Pero ya saben
ntras unas y dedo
alo q. saben.*


All. luc go al instante va lio otra masa y


 la Uiguela to mo con gracia y con mas


 garto y mas Chulada Canto estas vequi


 di las q. son mas guapas si q.

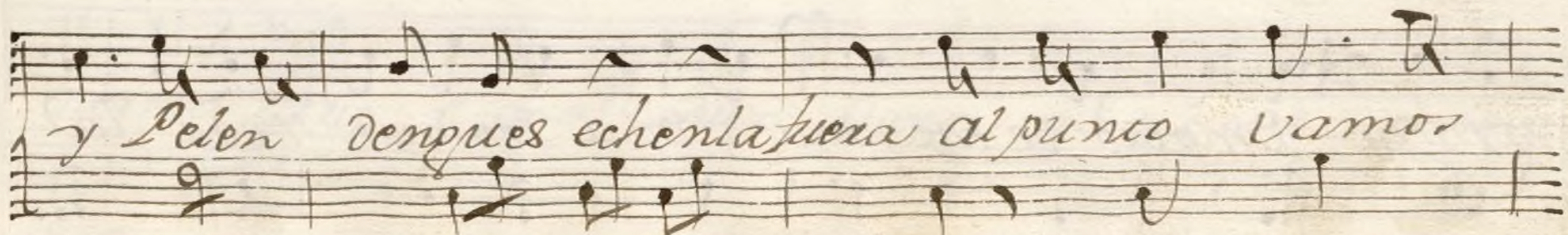
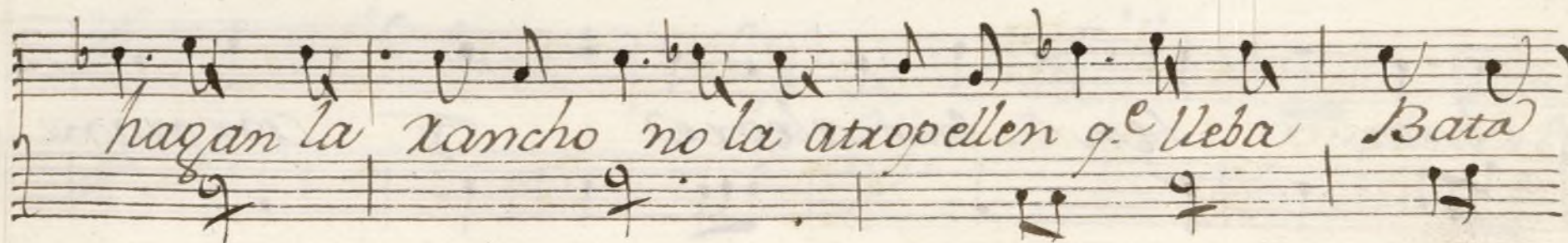
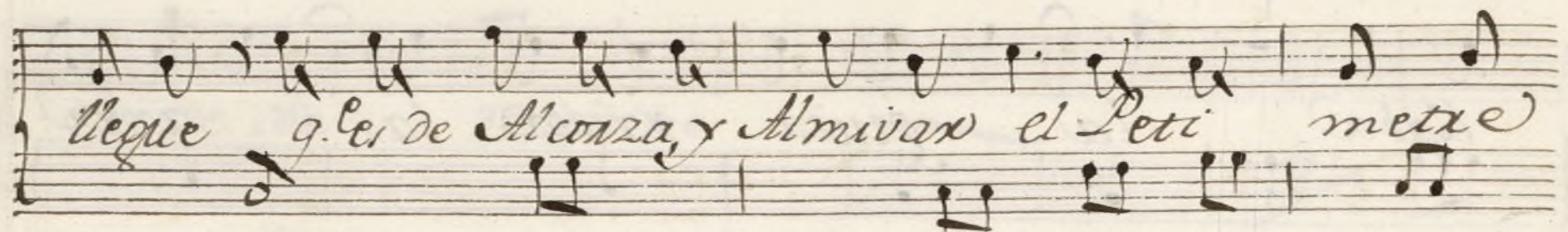
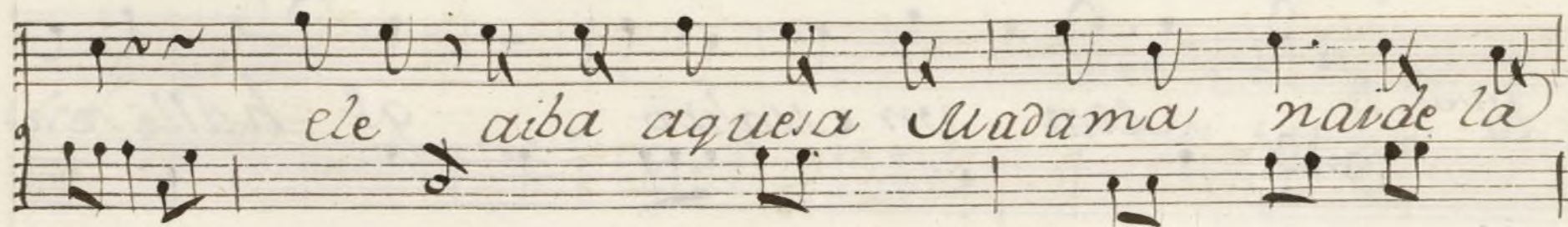
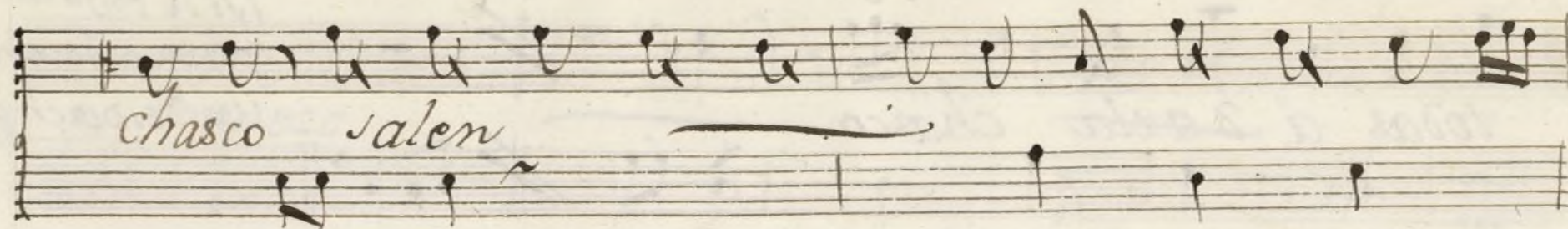
Handwritten musical score on aged paper, featuring six systems of staves. The notation includes various note values, rests, and bar lines. The lyrics are written in a cursive hand below the staves.

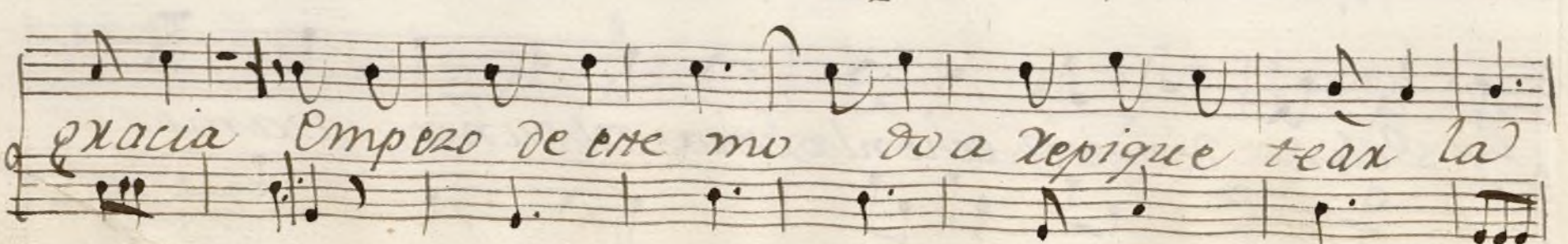
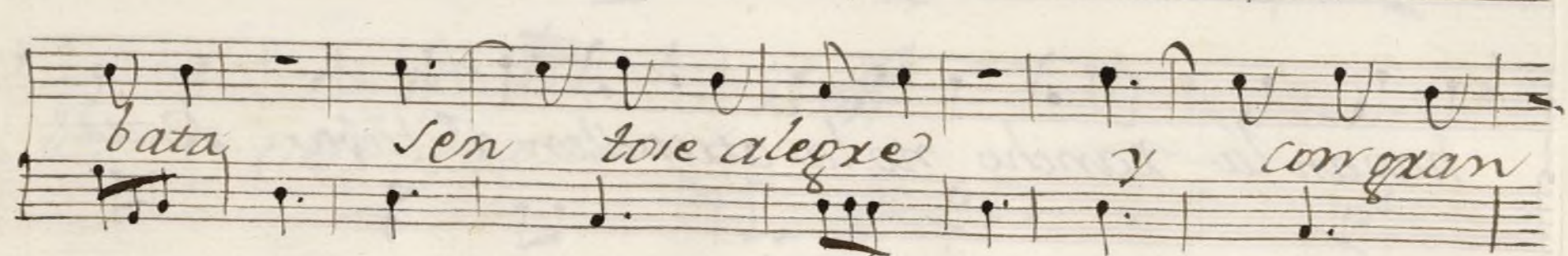
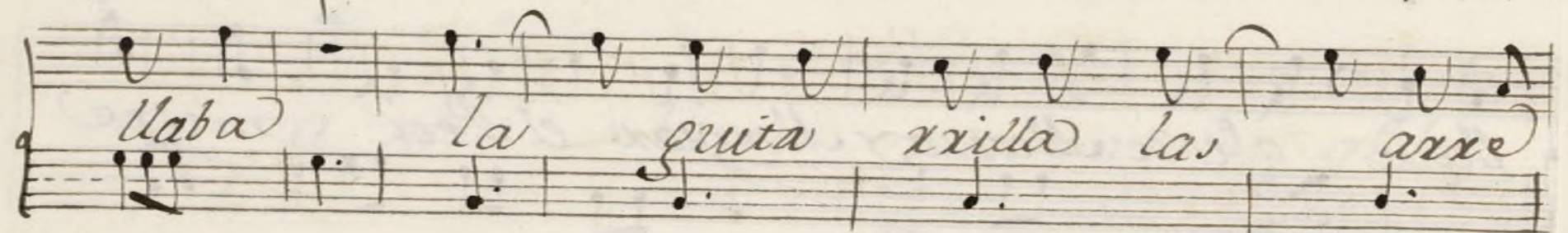
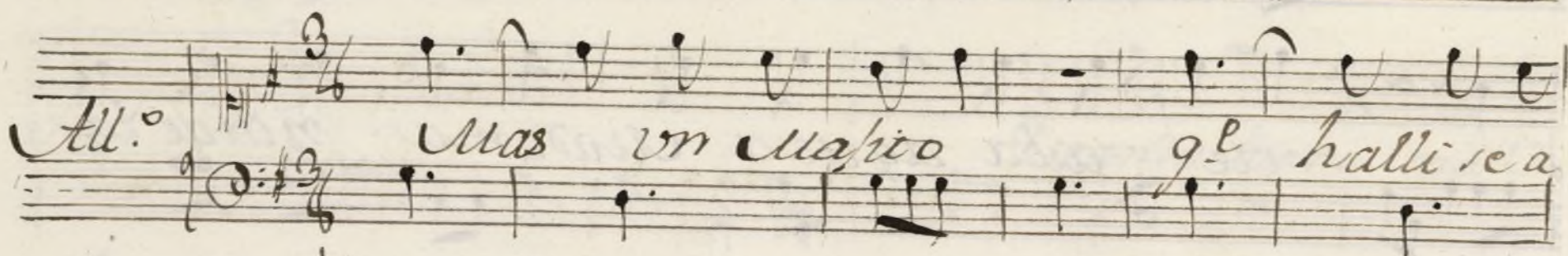
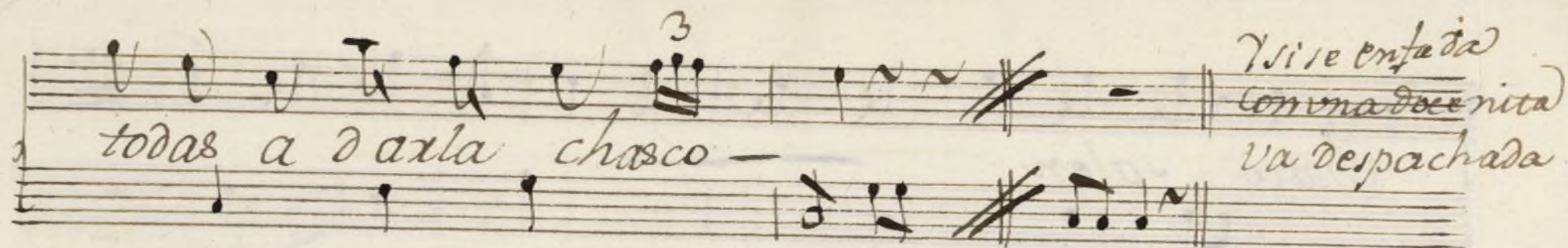
Seq. *Quando viene una U*

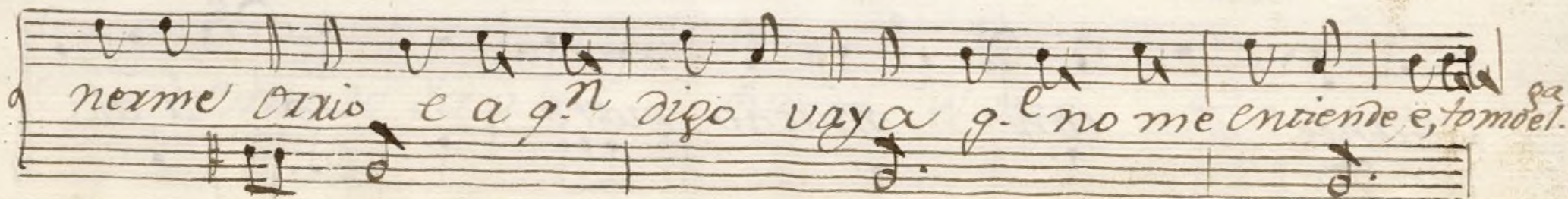
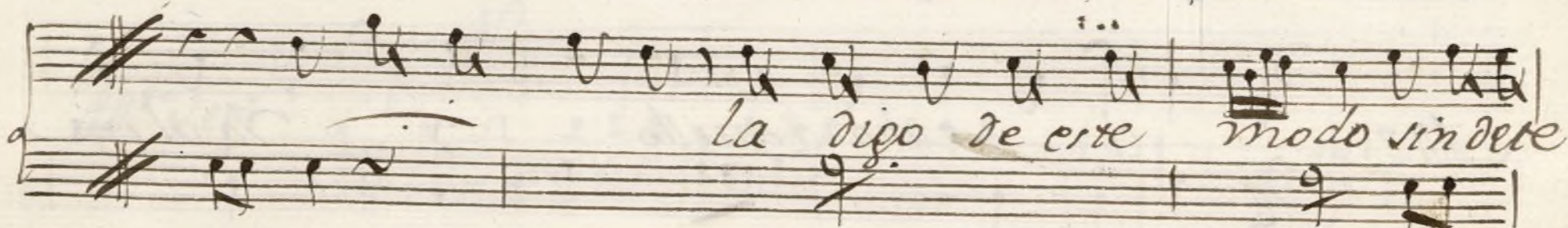
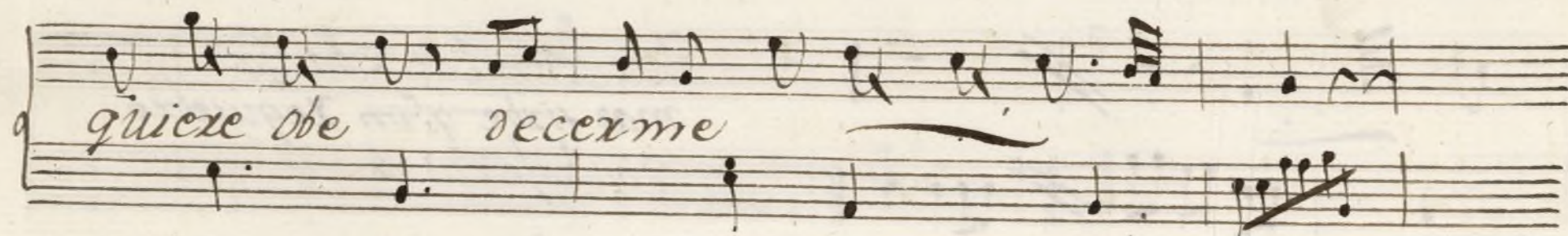
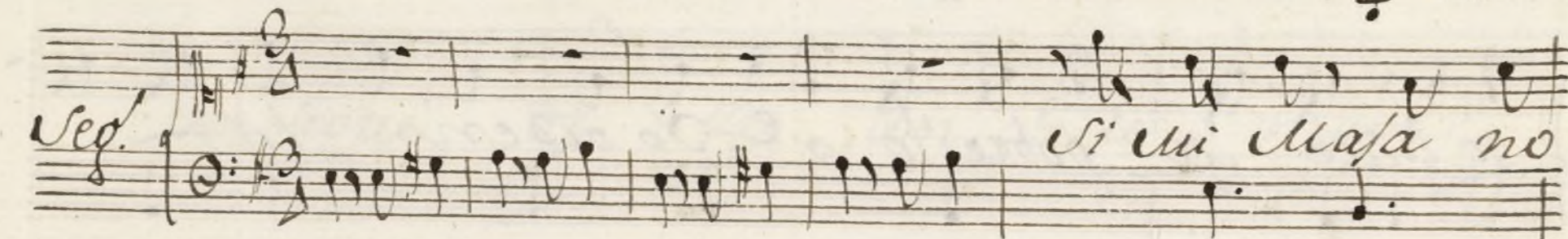
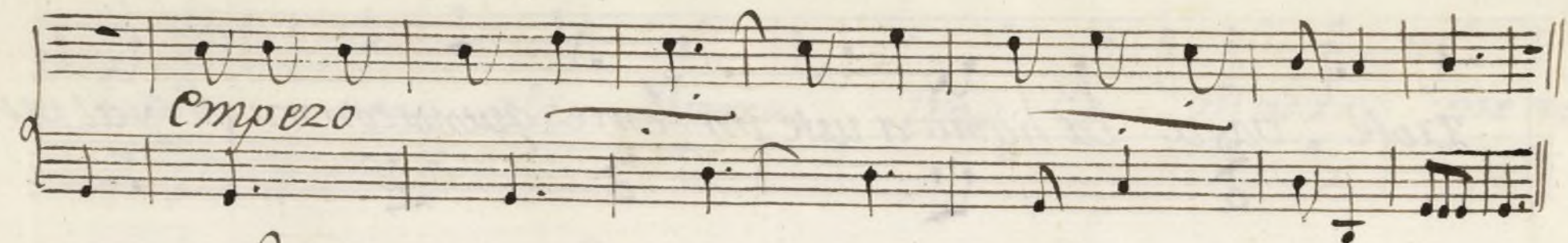
ria) a nro baxio rompa ueste g. l'p-

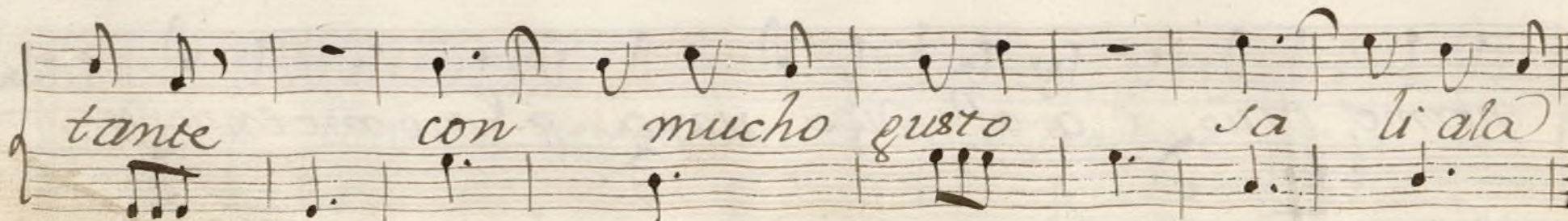
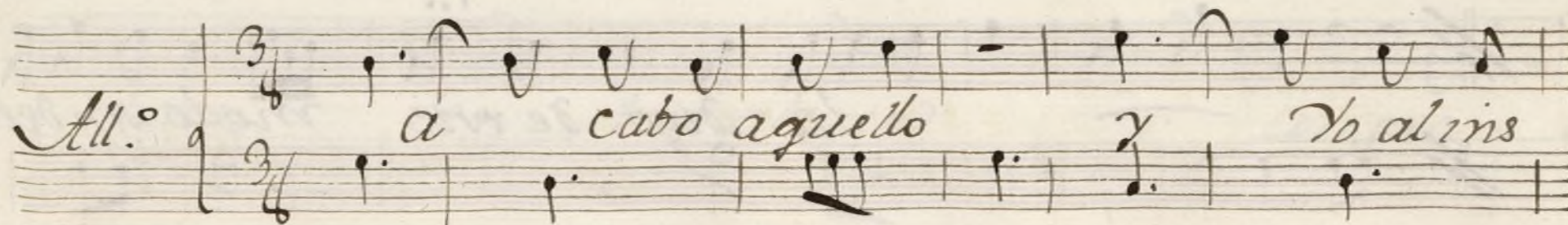
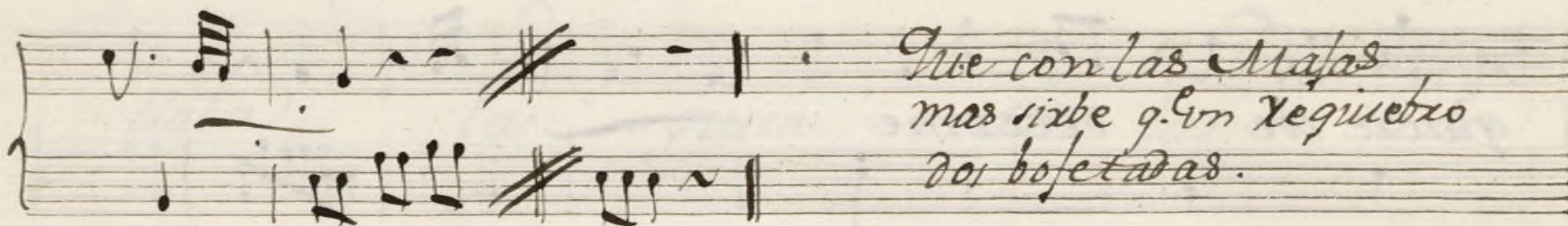
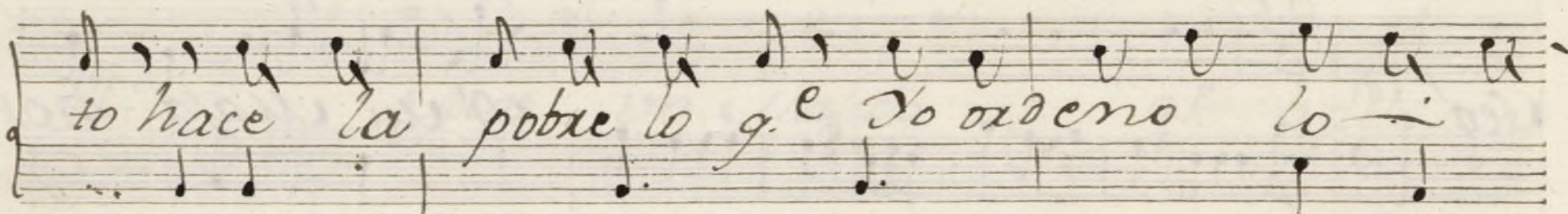
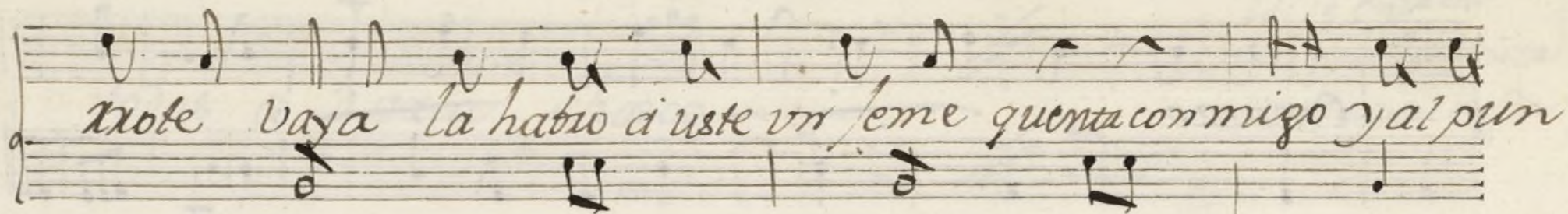
Uin a nro baxio

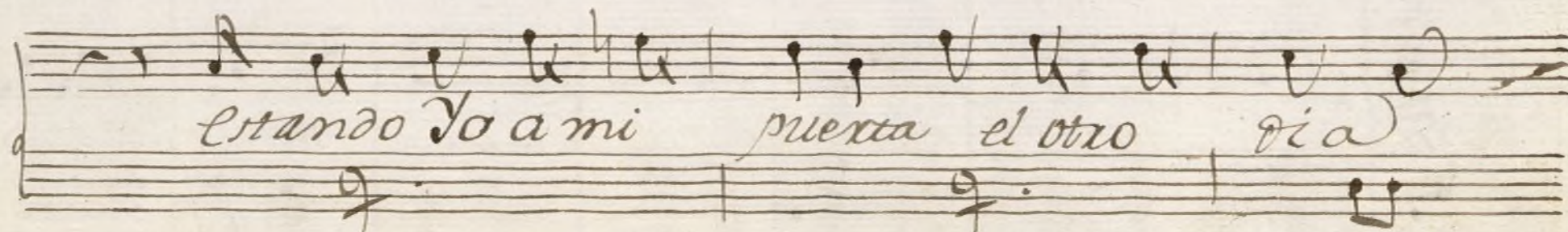
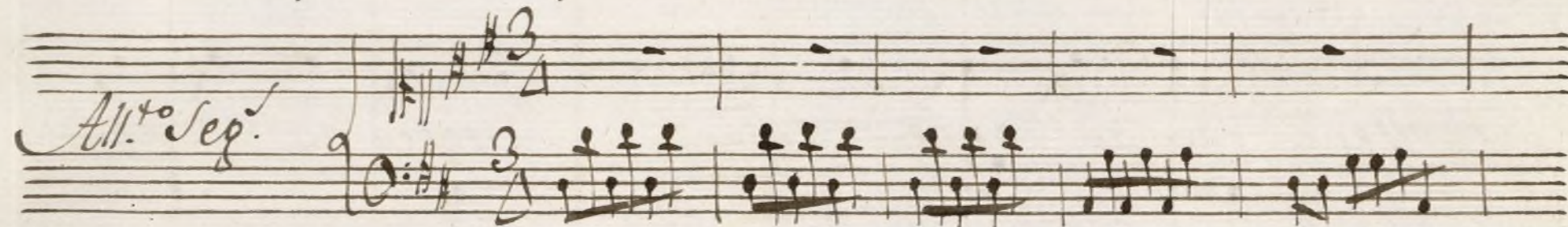
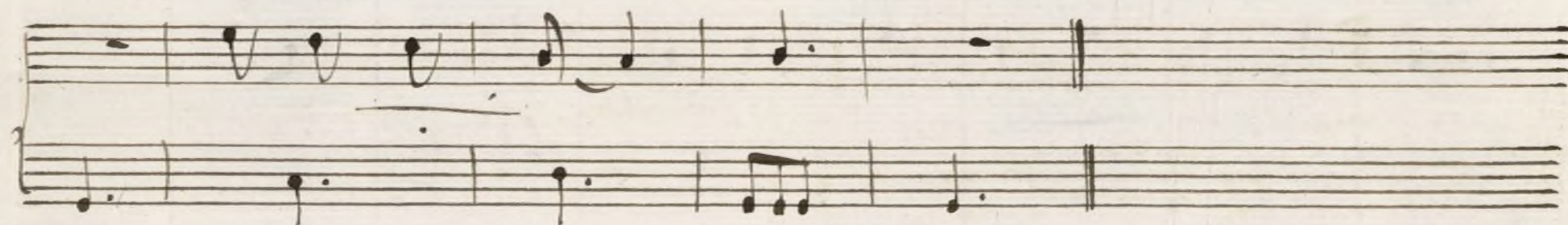
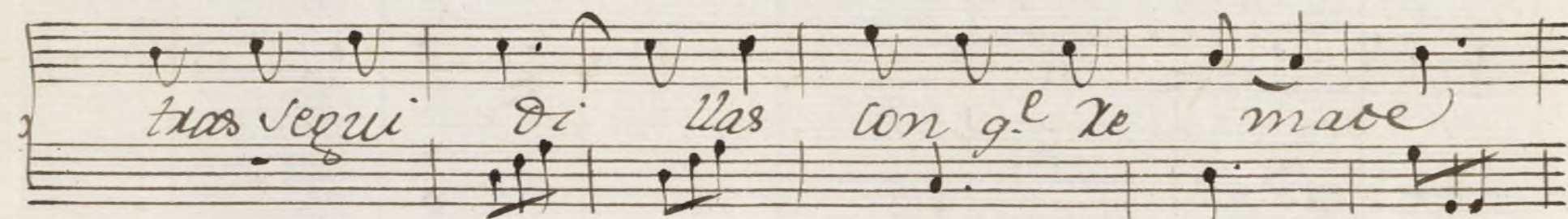
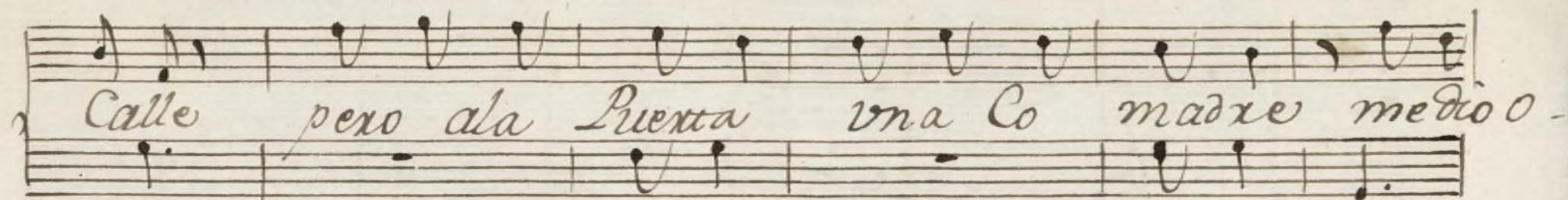
Salen todas las Masas a dar la











Handwritten musical score on aged paper, featuring six systems of staves. The lyrics are in Spanish and appear to be a song or a dramatic piece. The notation includes various musical symbols such as notes, rests, and bar lines, along with some decorative flourishes. The paper shows signs of age, including discoloration and some wear at the edges.

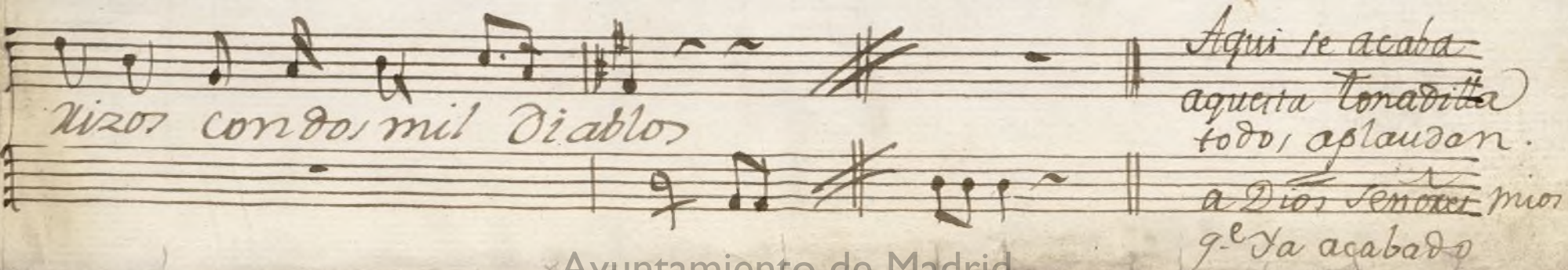
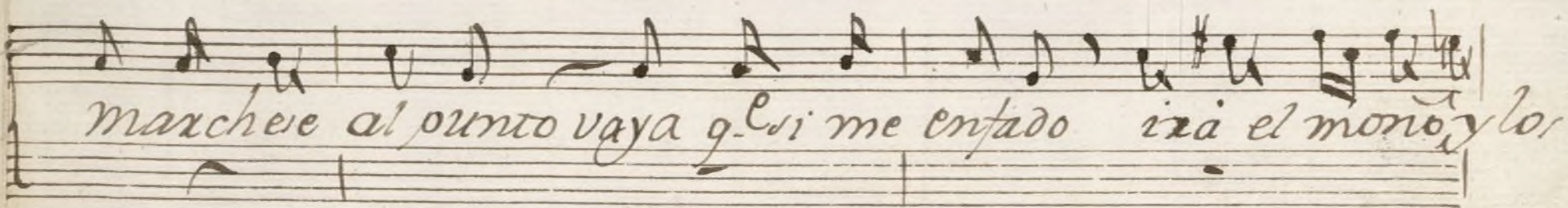
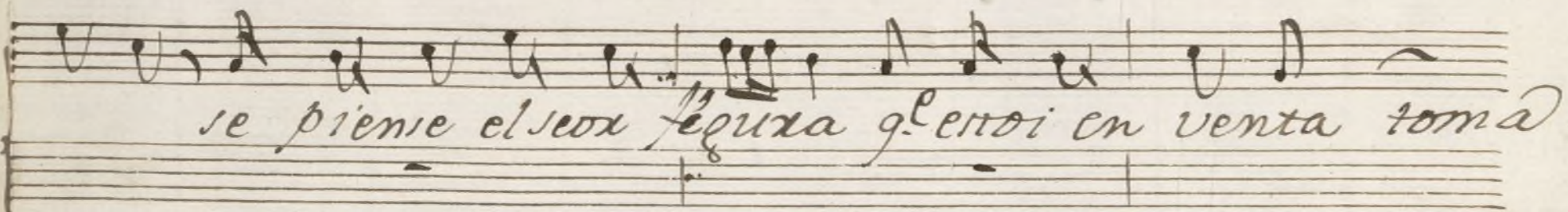
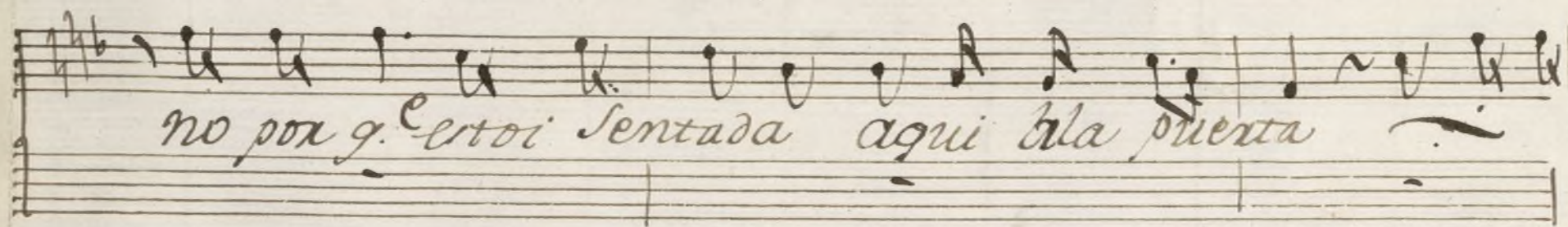
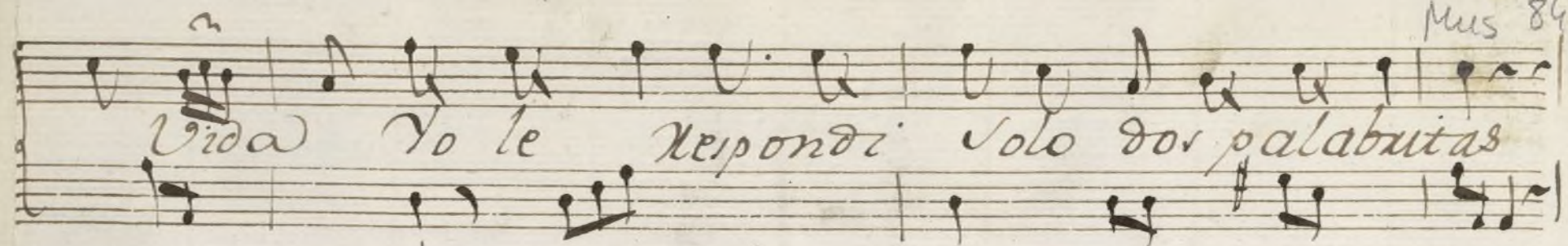
el otro día

a de cixme Requiebro

Llego un Usi-

a llegó mui dexe tido haciendo conte-

sta — hubo aquello de mi alma mi corazón y



Violin 1: Ton.^a a solo de las Seguidillas.

Dep.^o 6/8

Se Repite.

All.^o 3/8

Depite alor Parr.^o

Lo na
dia
a solo
de la
seg
da
pa
ra
son

Handwritten musical score on aged paper, featuring multiple staves of music. The notation includes various musical symbols such as clefs, time signatures (e.g., 3/4, 3/8), and notes. The score is divided into sections by tempo markings: *All.to* (Allegretto), *Seg.* (Sergio), and *allegro Repica*. The music is written in a style characteristic of 18th or 19th-century manuscript notation. The paper shows signs of age, including discoloration and wear along the edges.

allegro Ayuntamiento de Madrid

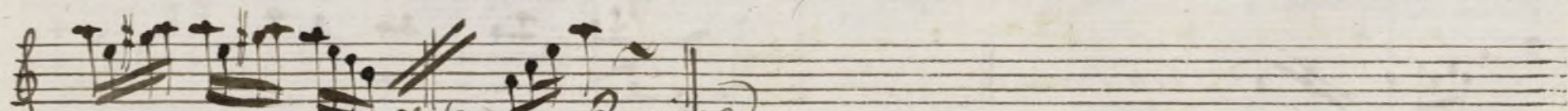
Violin 1^o Ton.^a a Solo de las Seguidillas

Dep. 

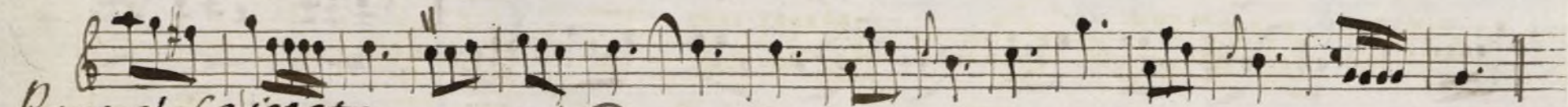
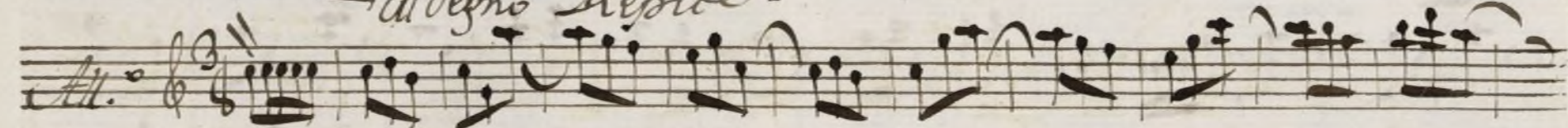
Se Repite  *Al.* 

Repice dos Puntos.

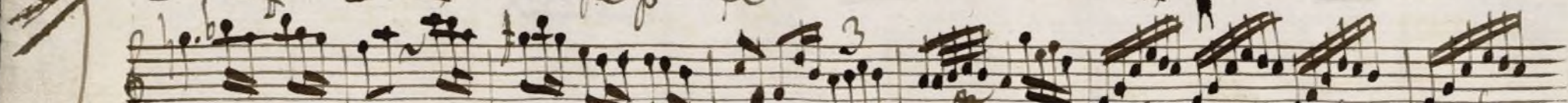
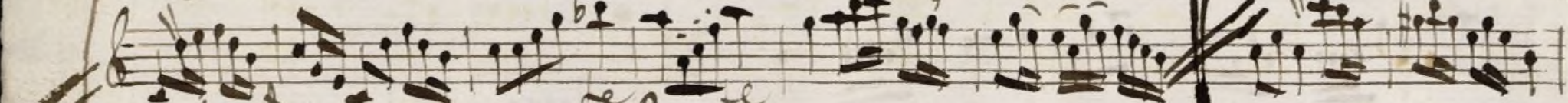
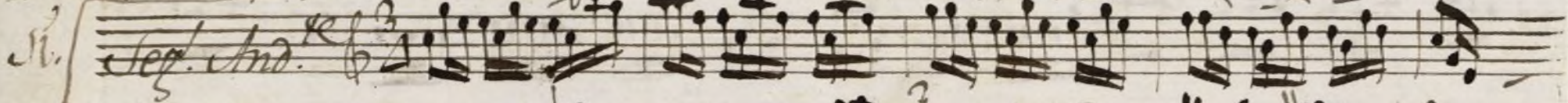
All.²⁰



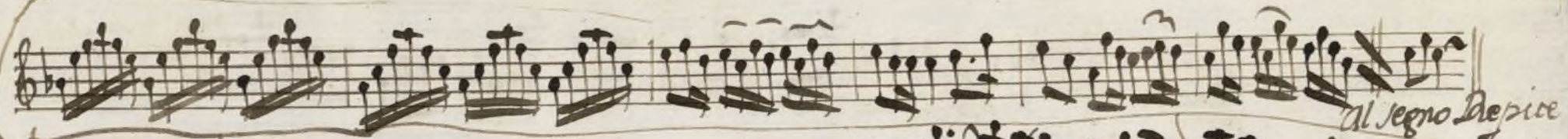
al segno Repite.



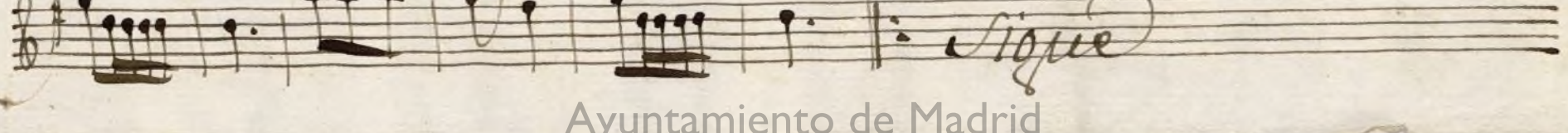
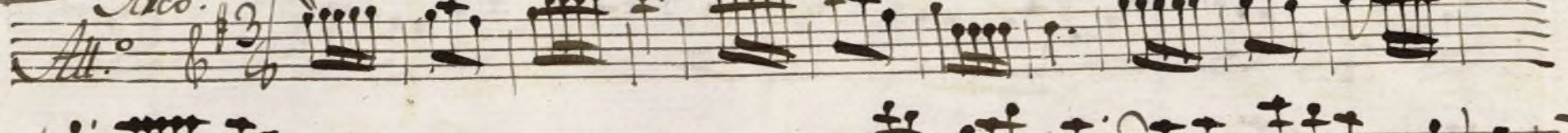
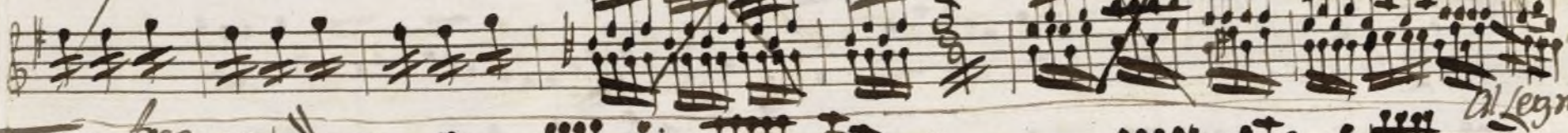
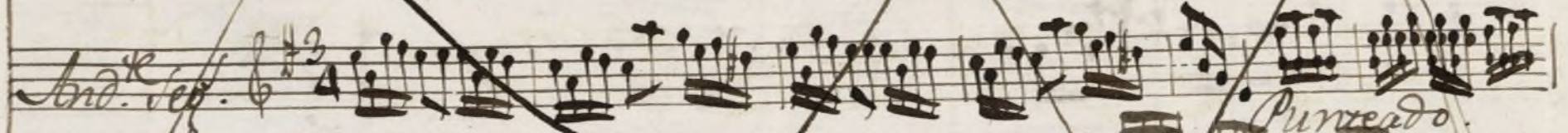
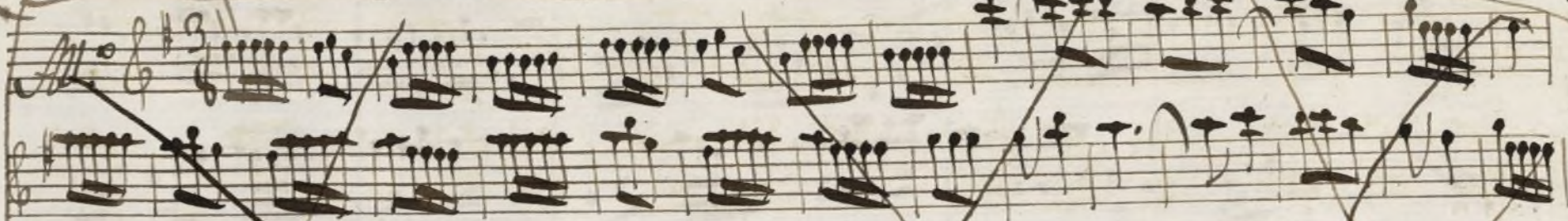
~~Para el Canto.~~



no



al segno Depice



si

Puntado

al segno Depice

Sigue

All.^{to} Seg.

The first system consists of five staves. The first staff begins with the tempo marking *All.^{to} Seg.* and a key signature of one sharp (F#). The notation is dense, featuring many beamed sixteenth and thirty-second notes, as well as triplets indicated by a '3' over the notes. The third staff has a large section of its beginning crossed out with a diagonal line. The fifth staff contains a large section of music that has been heavily crossed out with multiple diagonal lines, leaving only some notes visible. Below this section, the text *al Segno & arpeggiato* is written in cursive.

al Segno & arpeggiato

The second system consists of three staves. The first staff begins with a key signature change to two sharps (F# and C#). The notation continues with complex rhythmic patterns. The third staff ends with a double bar line. Below the staves, the text *Al Segno Repite.* is written in cursive.

Al Segno Repite.

+

Mus 84-14

Violin 2.^o Ton.^a a solo dela. Seq.^o



alo. Paraph. Repite.

All.^{to}
Sep. 6/8

Prepara al segno

All.^o 6/8

And.^{te} Sep. 6/8

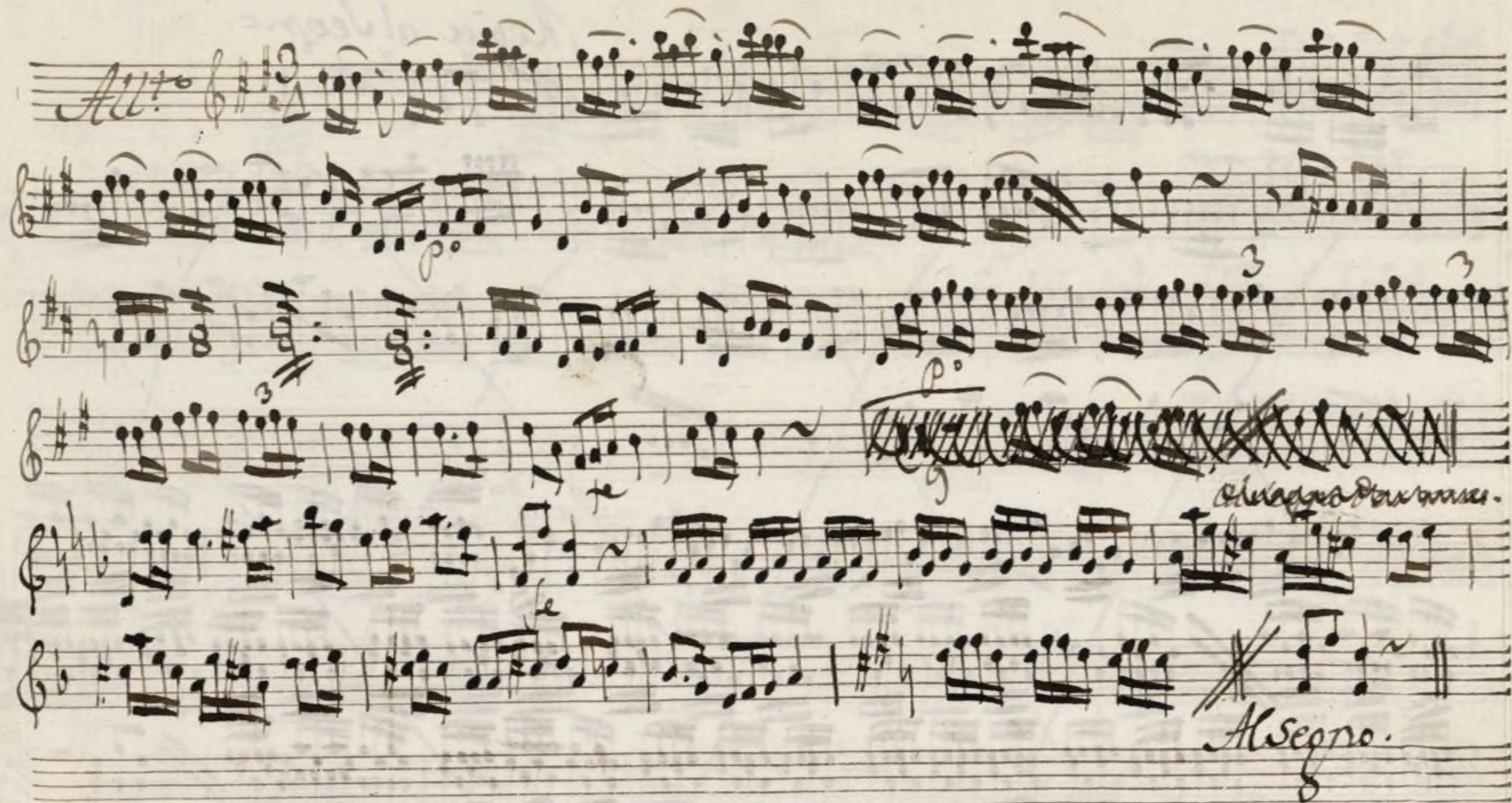
te po te

Repite al Segno.

no

Punt.

al Segno Repite.



Violin 2.ª Ton.ª a Solo de las Seguidillas.

Dep.º & #6

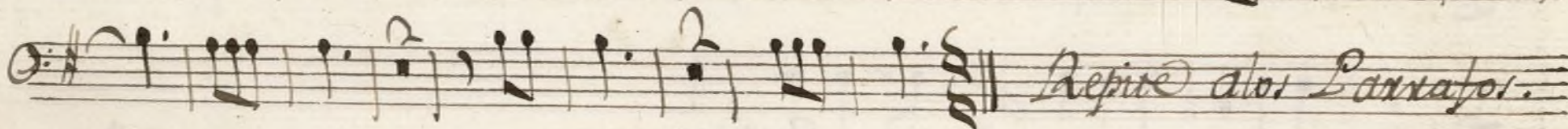
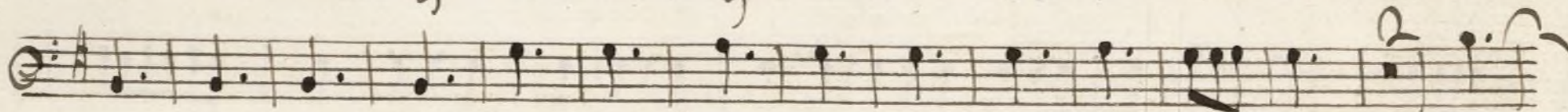
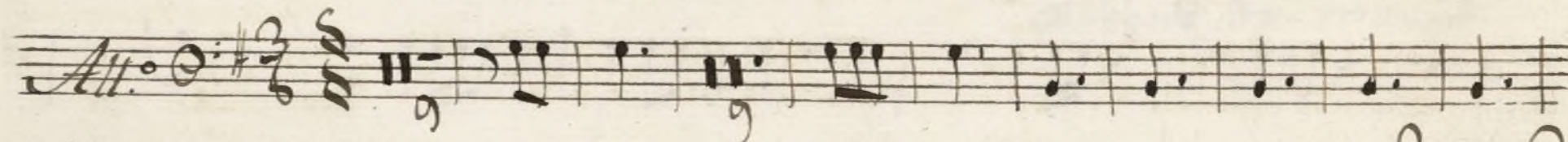
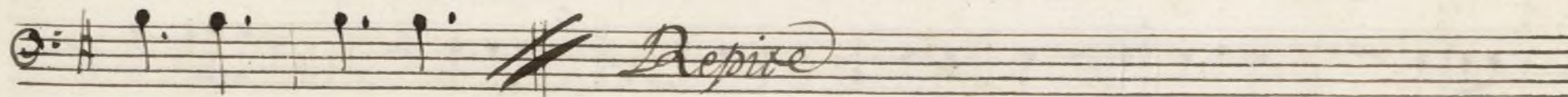
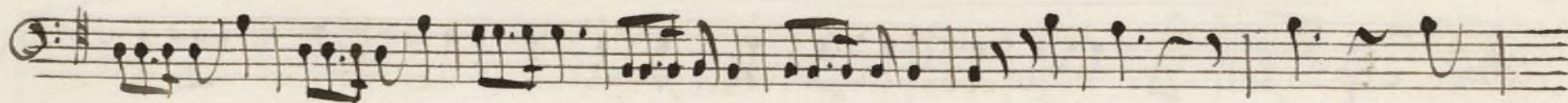
Se Repite.

All.º & #3

alos Parrafos Repite.

Handwritten musical score on ten staves. The notation includes treble clefs, a key signature of one sharp (F#), and a 3/2 time signature. The music features complex rhythmic patterns, including many beamed sixteenth and thirty-second notes, and rests. The score is divided into sections by repeat signs and includes the instruction "Al Segno Repite" written in cursive. The final staff ends with a double bar line and a fermata.

Trompa 1.^a Ton. a Solo de las Seguid.^{as}



Tacet Seg.^{as}

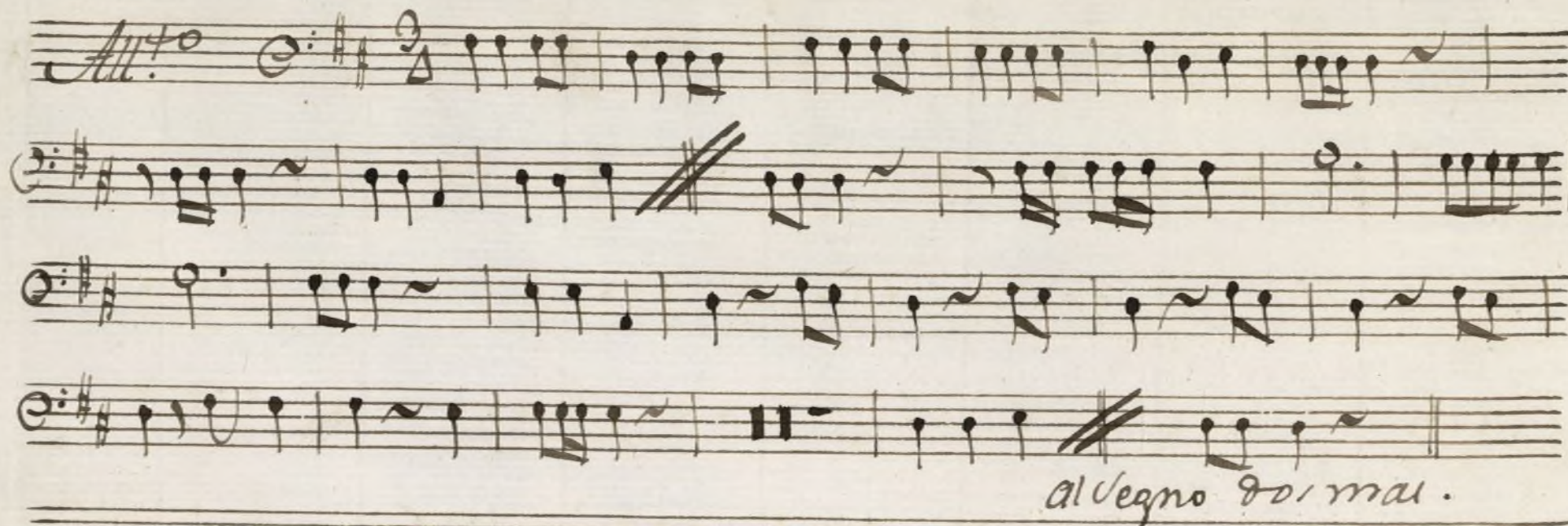
All.^o 3/4

And.^{te} Seg. 3/4

no All.^o 3/4

allegro Repite

Seg.^{ta} y All.^o Tacet.

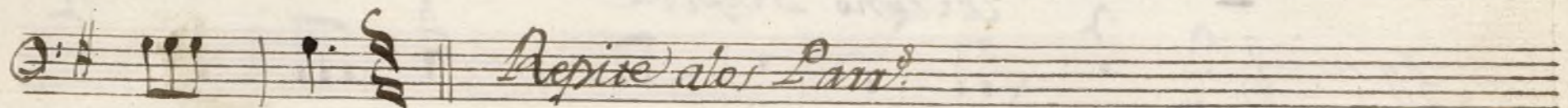
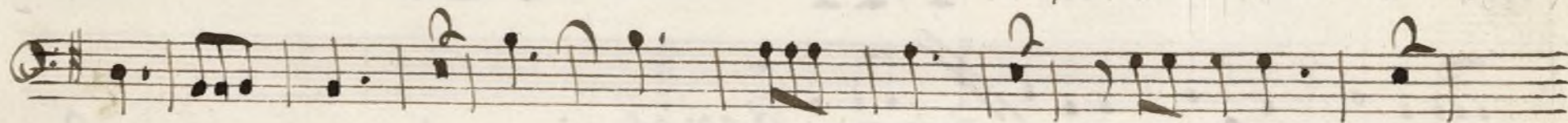
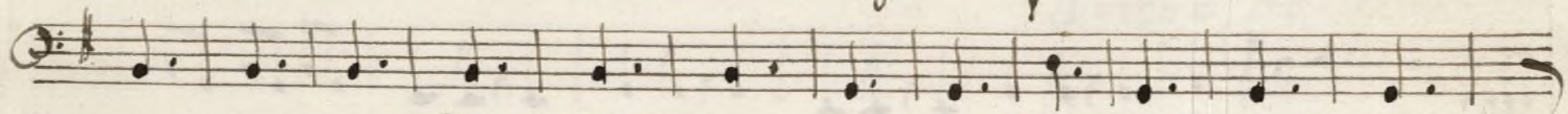
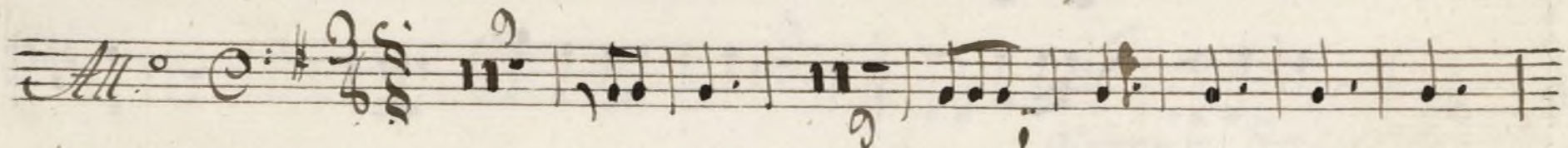
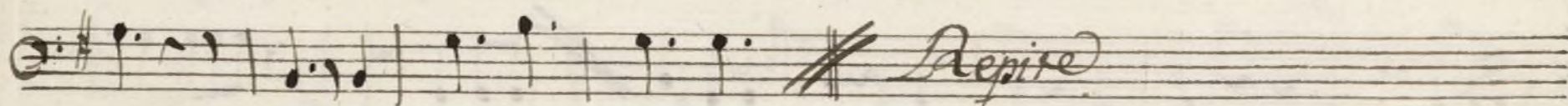
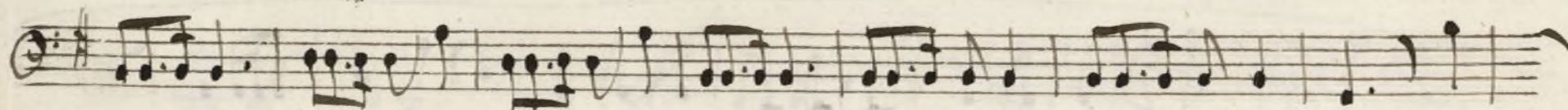
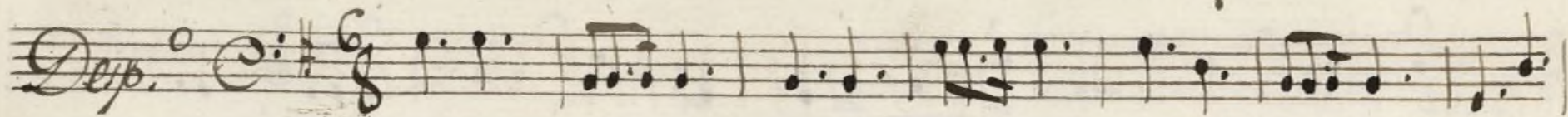




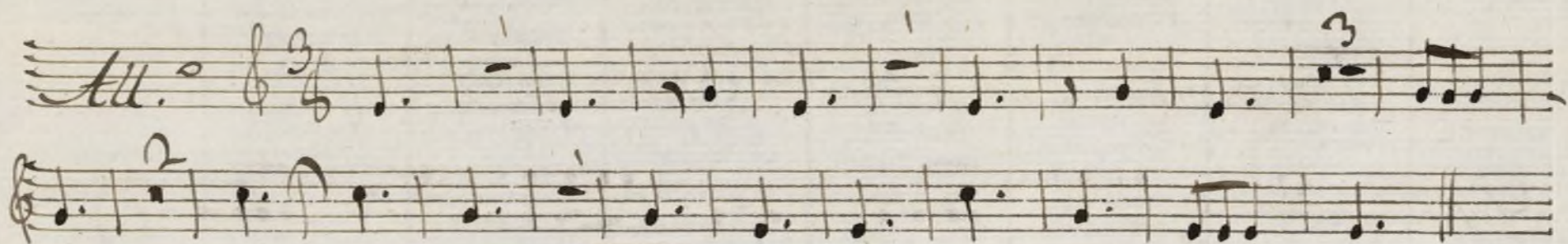
t

Mus 84-44

Trompa 2.^a Ton.^a Solo delas Seq.^{as}



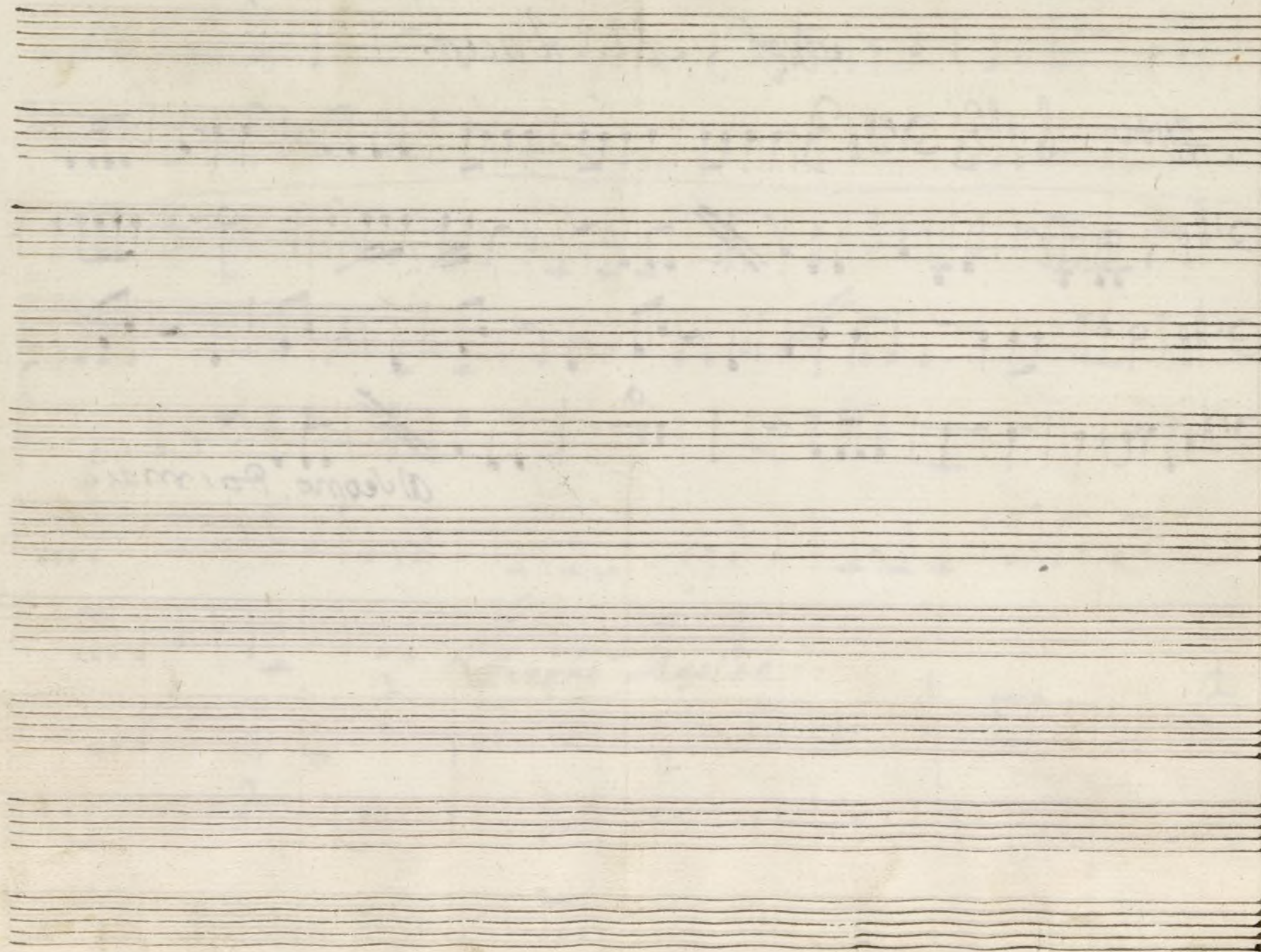
Seq. Tacet.

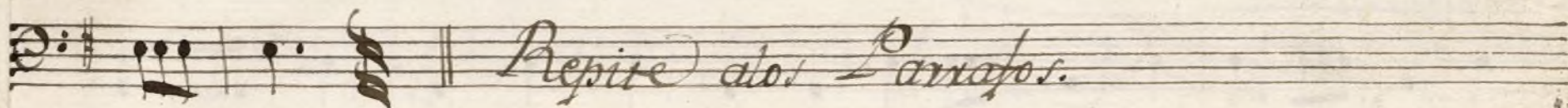
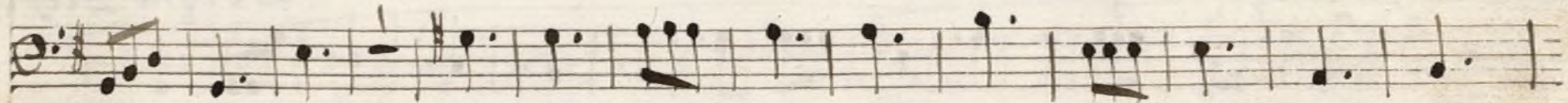
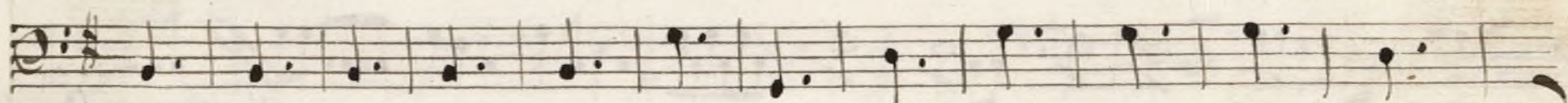
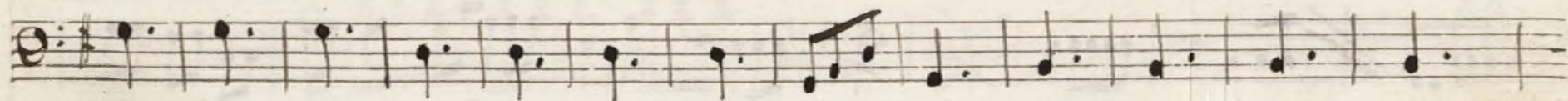
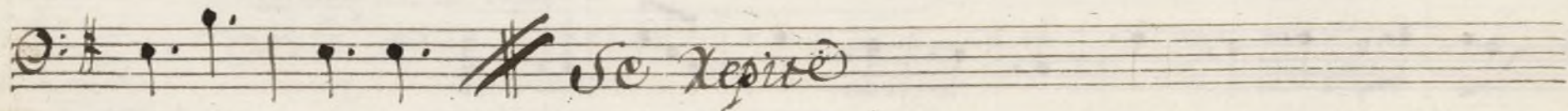
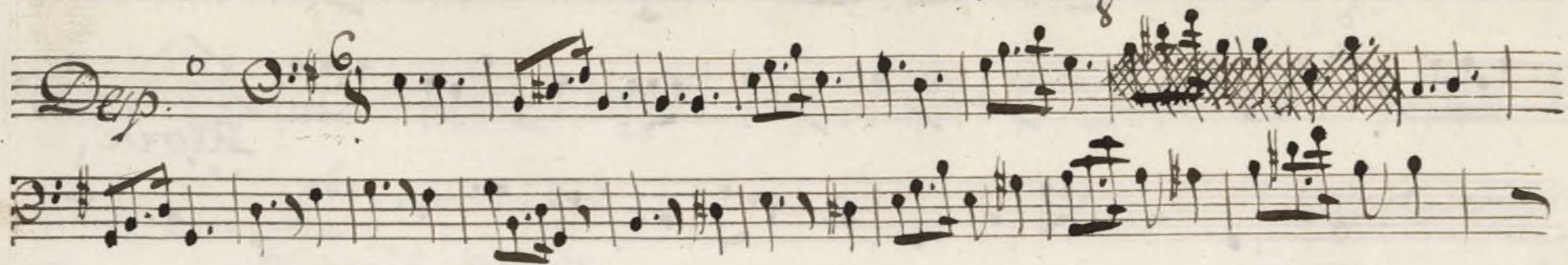


And. y All.º Tacet.

All.º

Allegro Dormai.



Contrabaxo Ton.^a a Solo delas Seq.^o

Handwritten musical score on aged paper, featuring two systems of music. The first system includes a section marked "And. no. Seq." and another marked "Allegro Depire". The second system includes a section marked "And. Seq." and another marked "Allegro Depire". The notation is in 3/4 time, with various musical symbols and clefs.

And. no. Seq.

Allegro Depire

All. 3/4

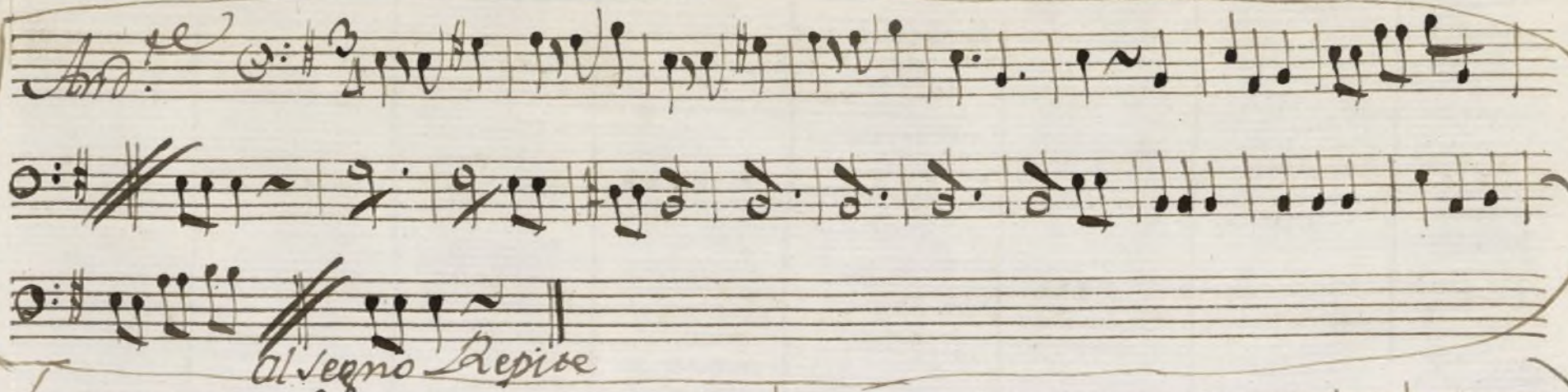
51. And. Seq.

Allegro Depire

All. 3/4

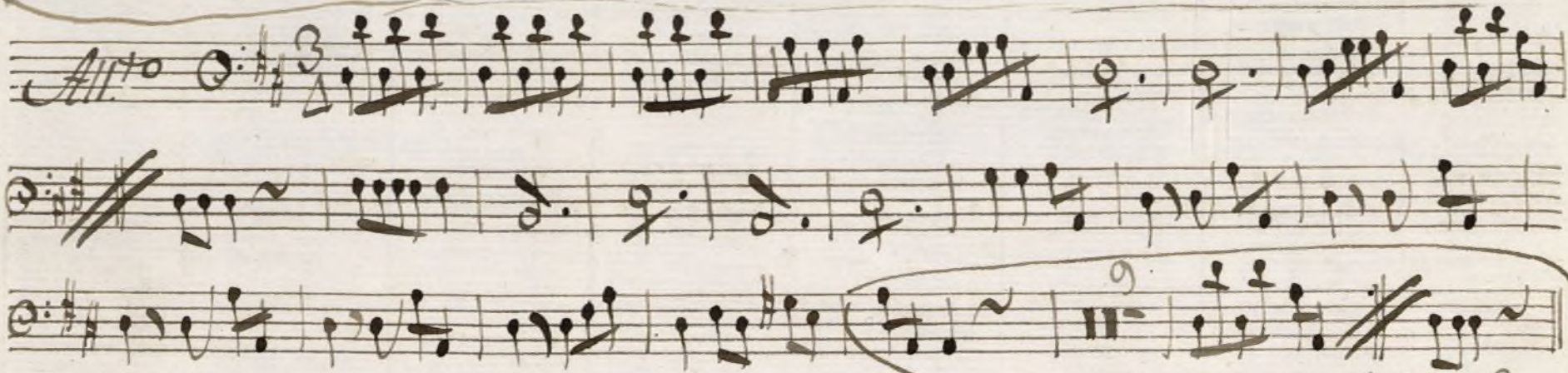
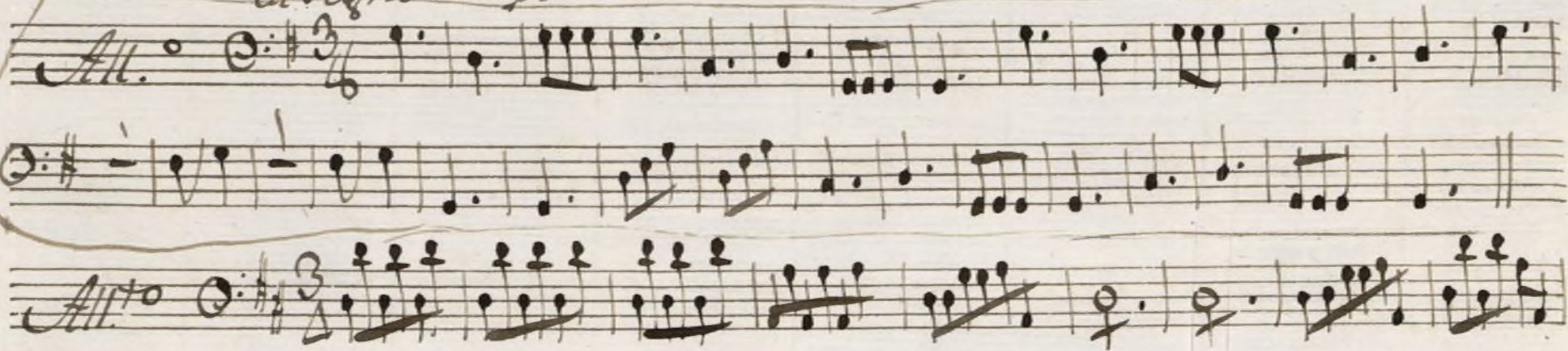
no.

no

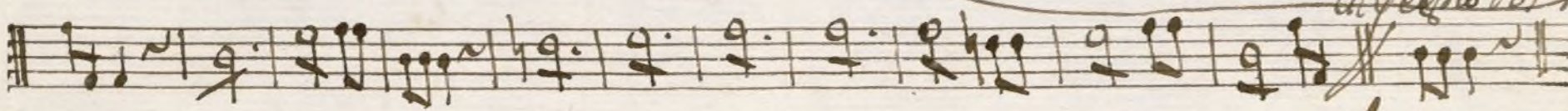


al segno Repite

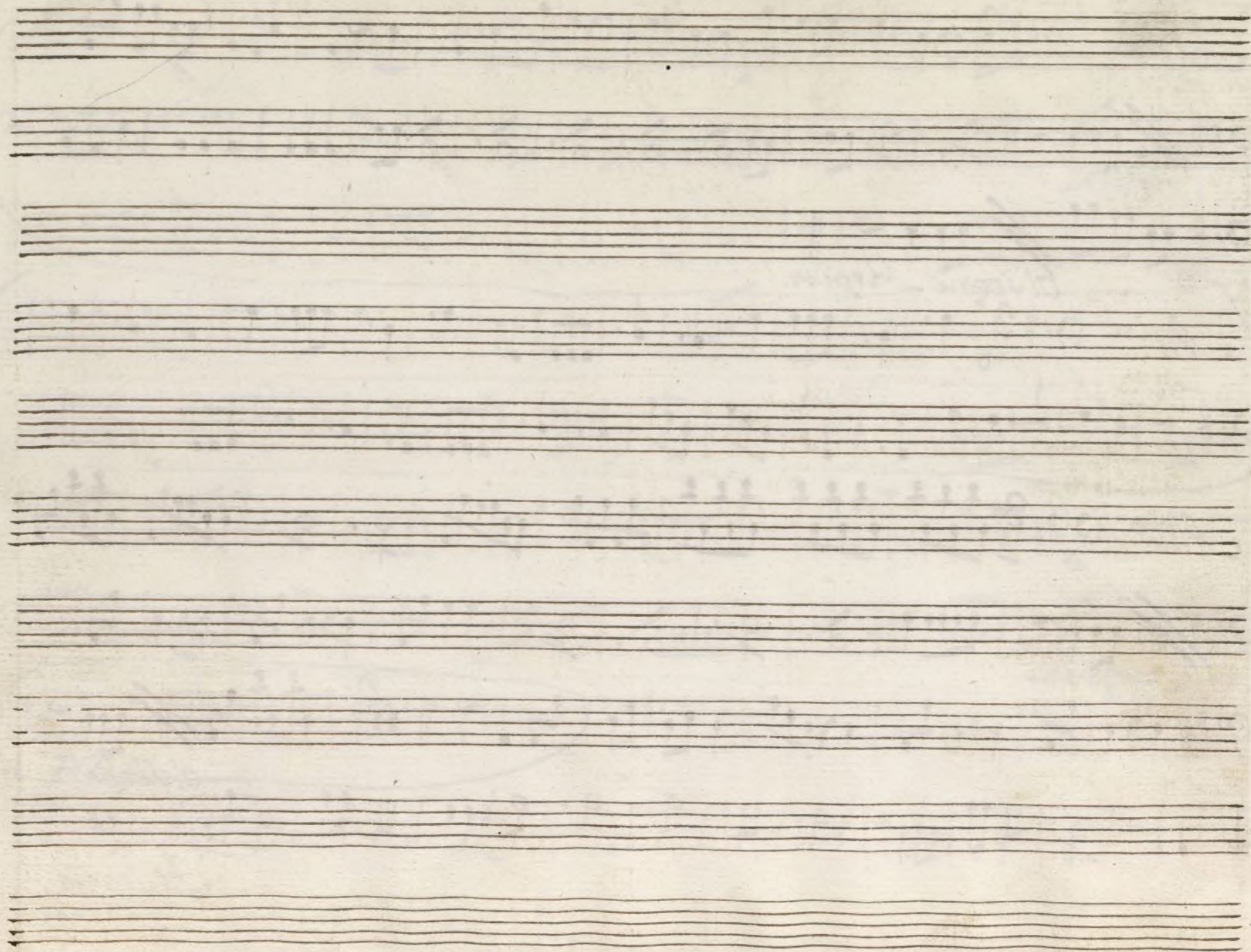
Si.



al segno per ma.



Al Segno.



Ayuntamiento de Madrid