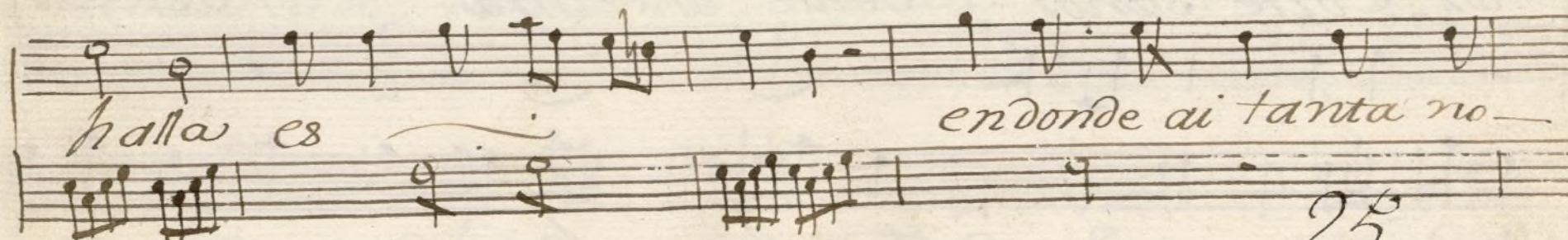
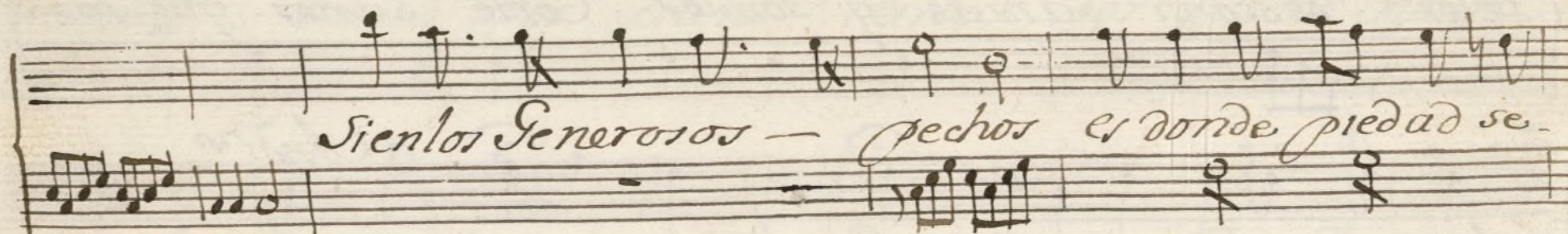
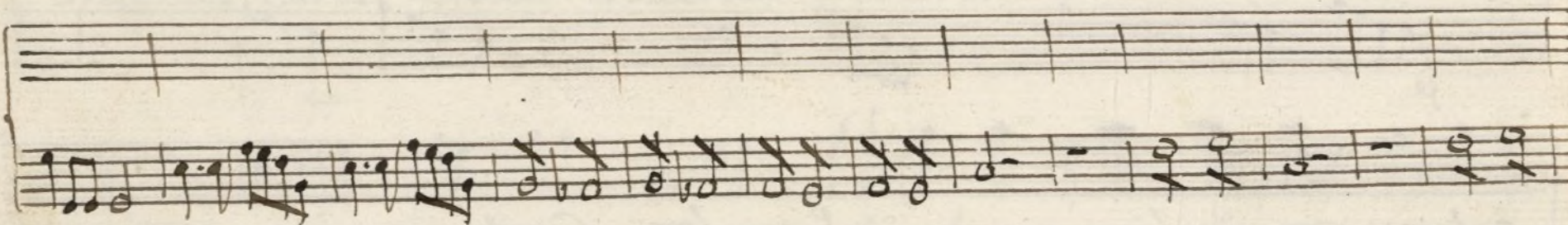
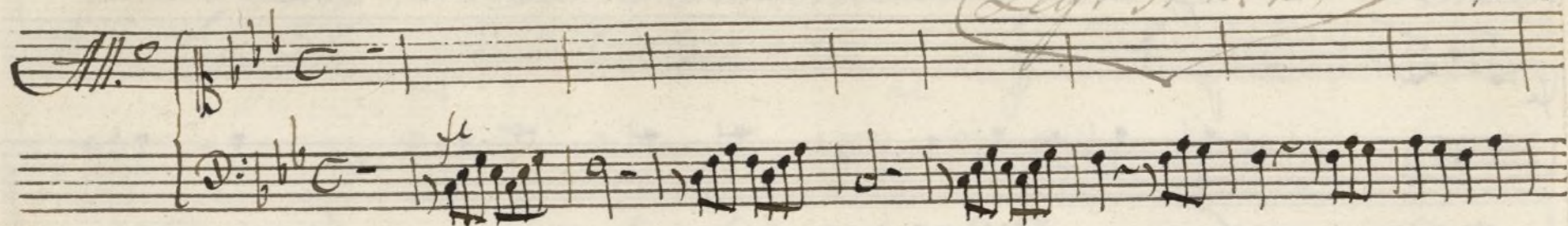


*Leg. 1.º N.º 41.*  
*Ton. a Solo La Suplica.*

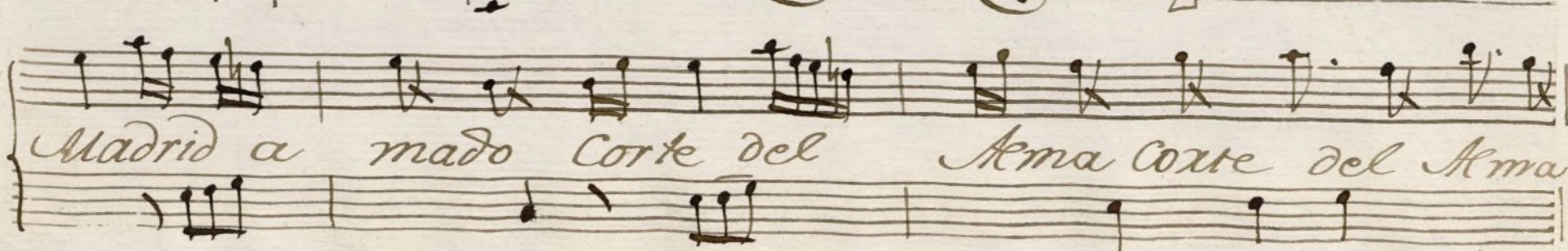
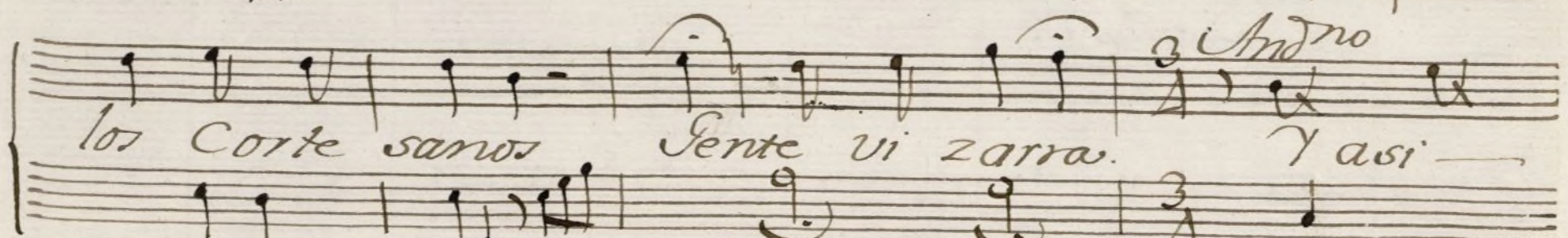
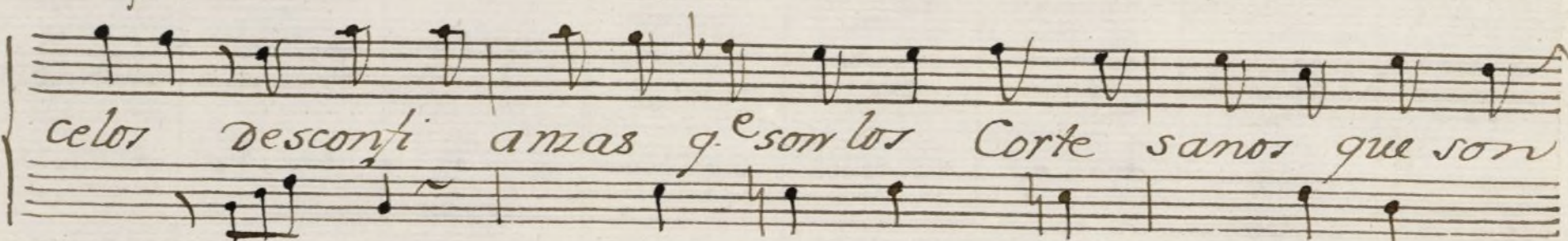
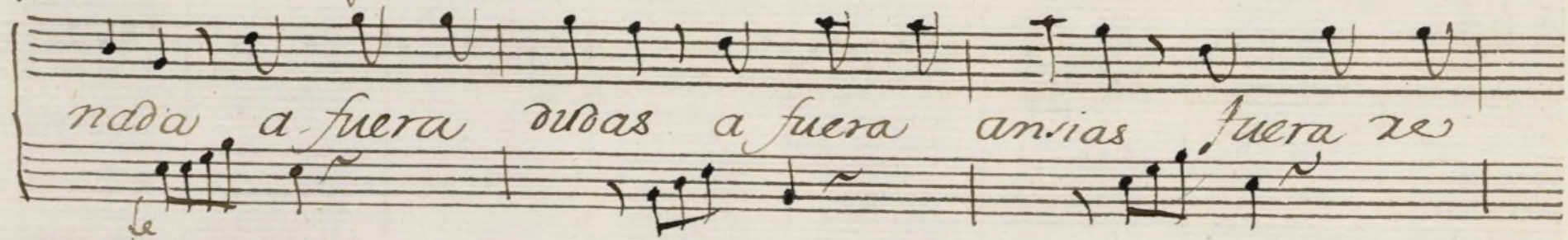
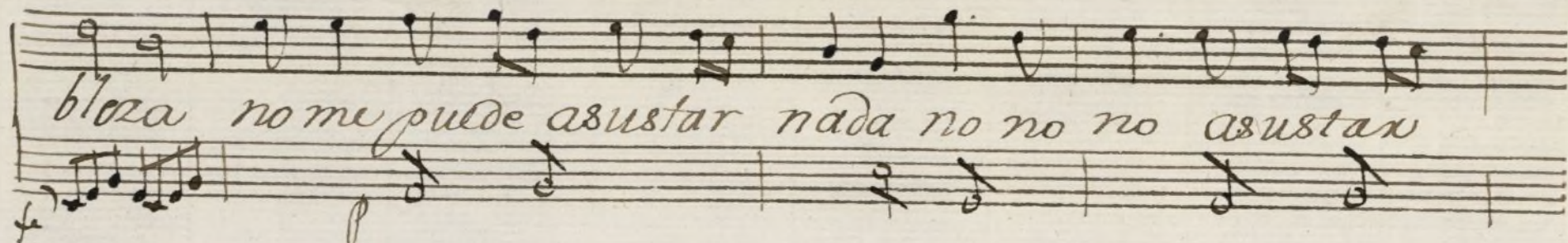
*Leg. 5.º N.º 25*

*mus 84-3*

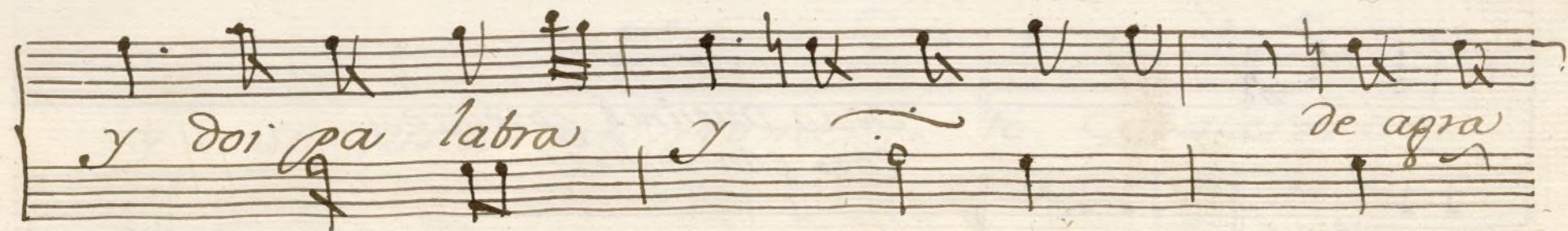
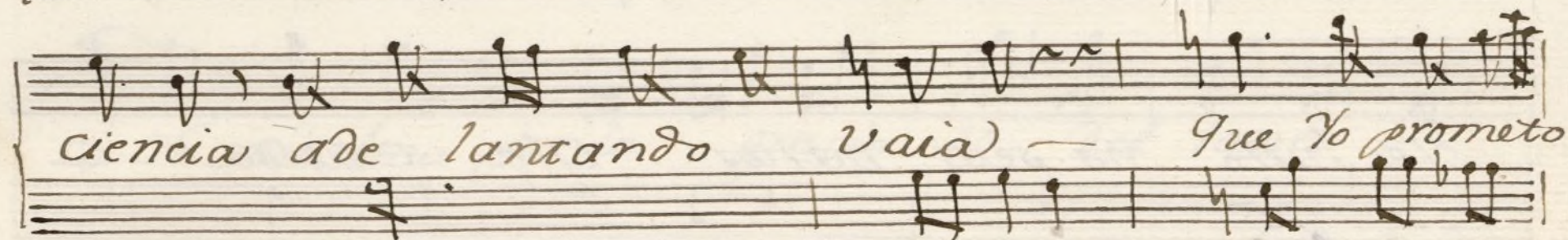
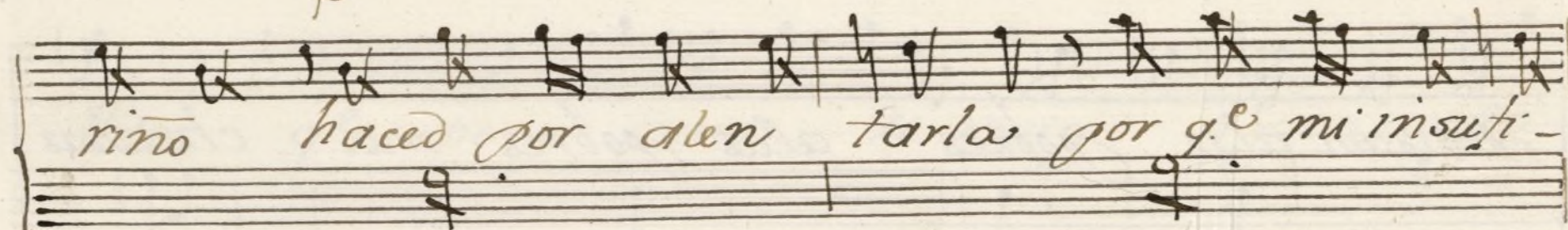
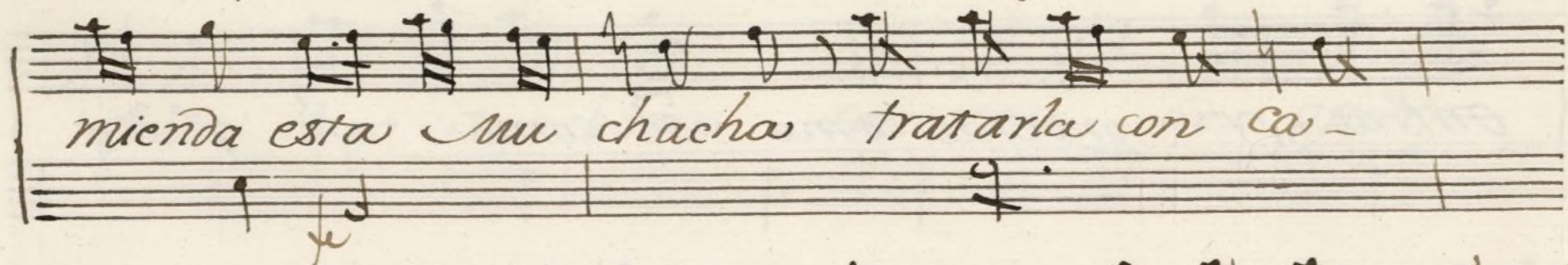


*25*

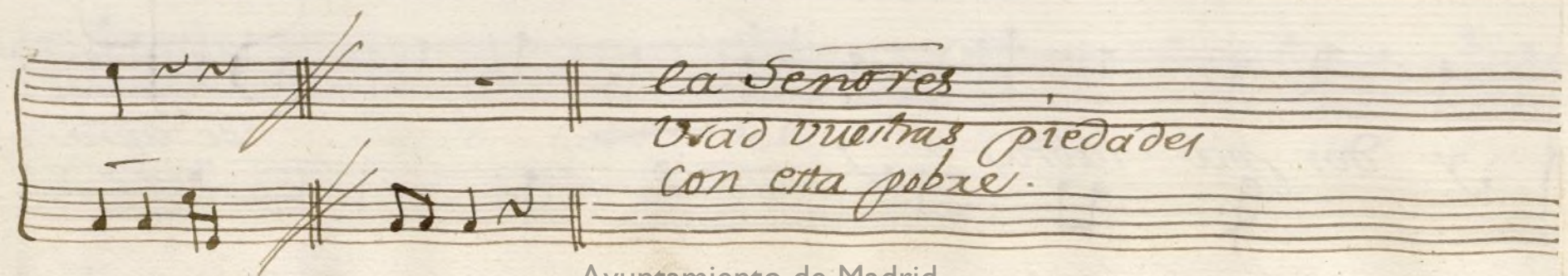
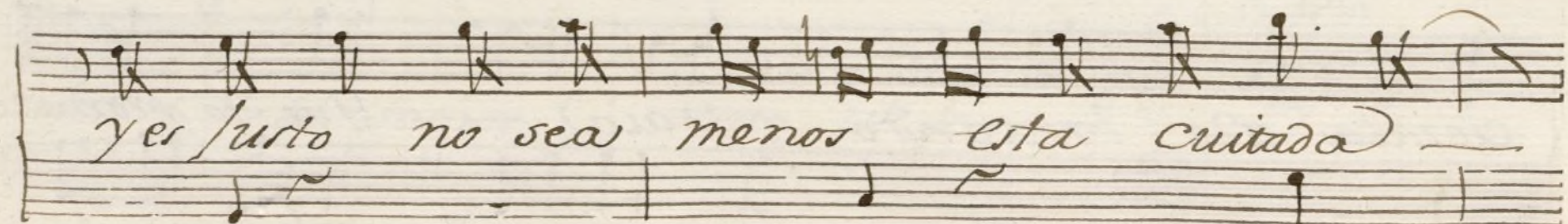
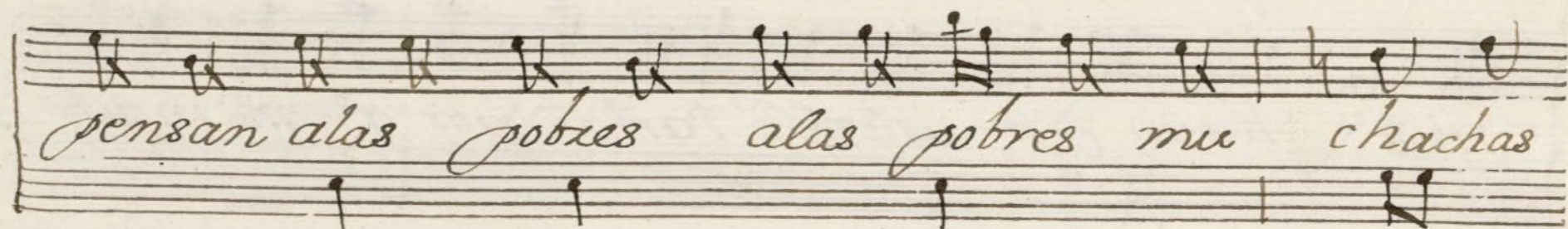
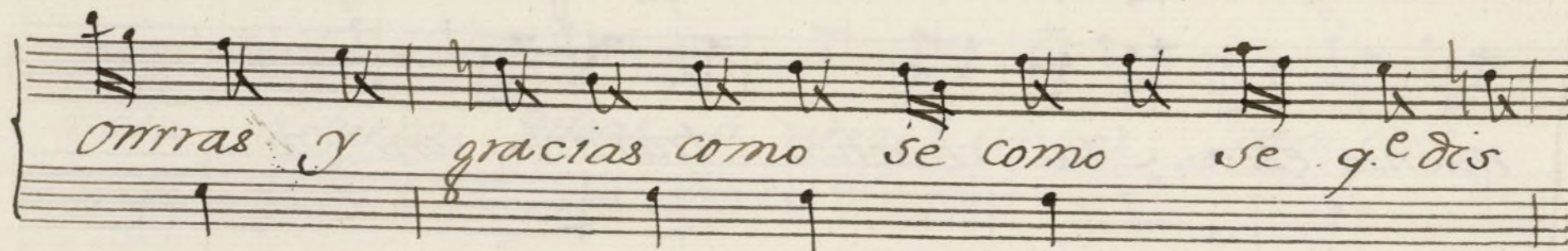
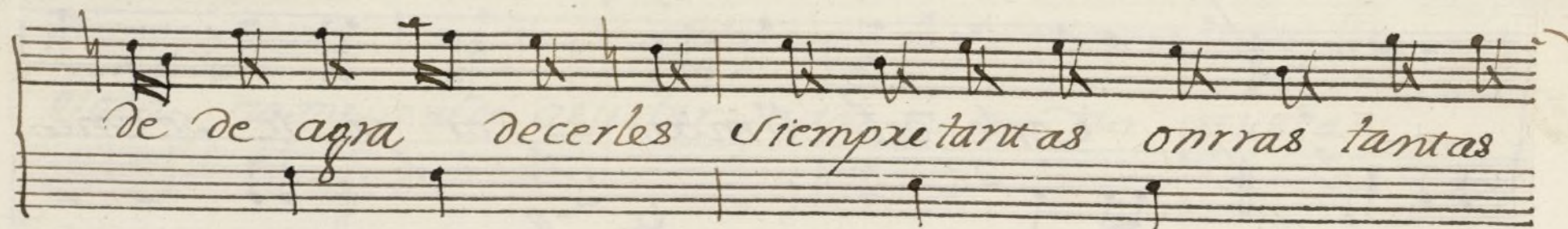




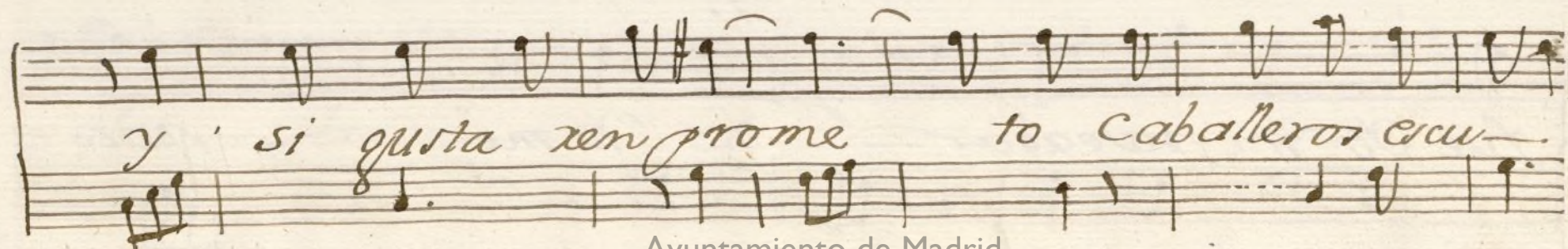
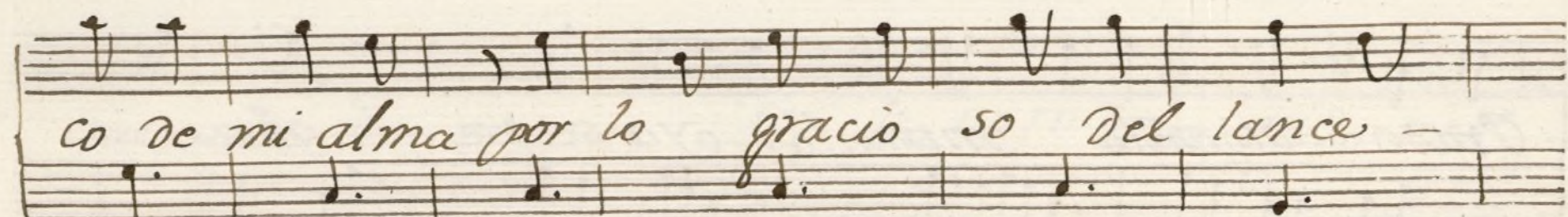
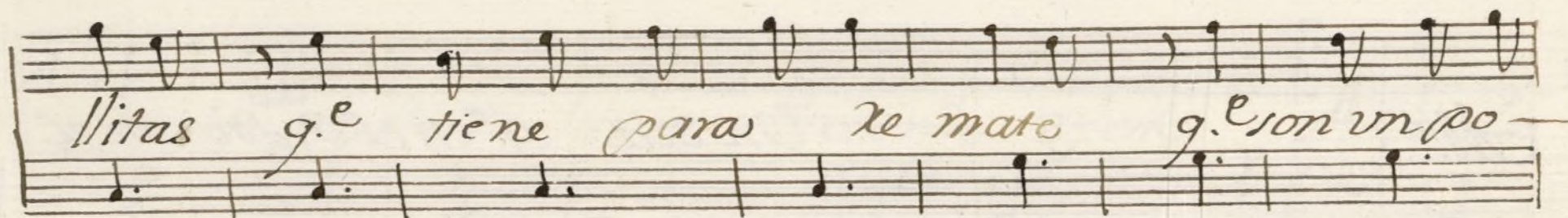
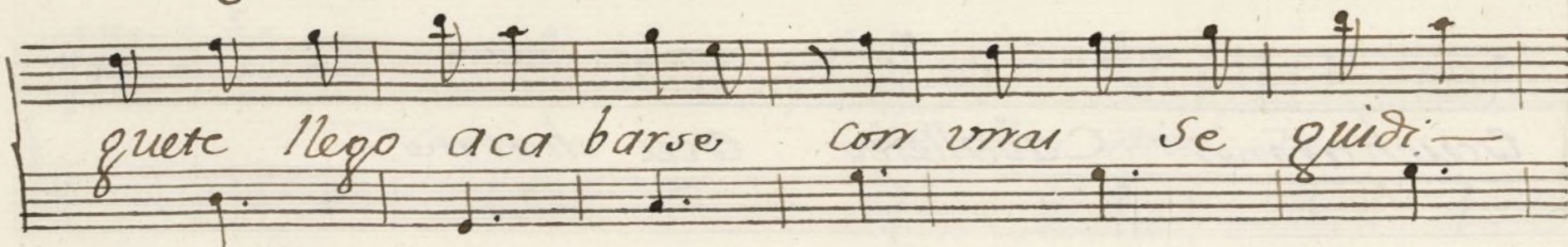
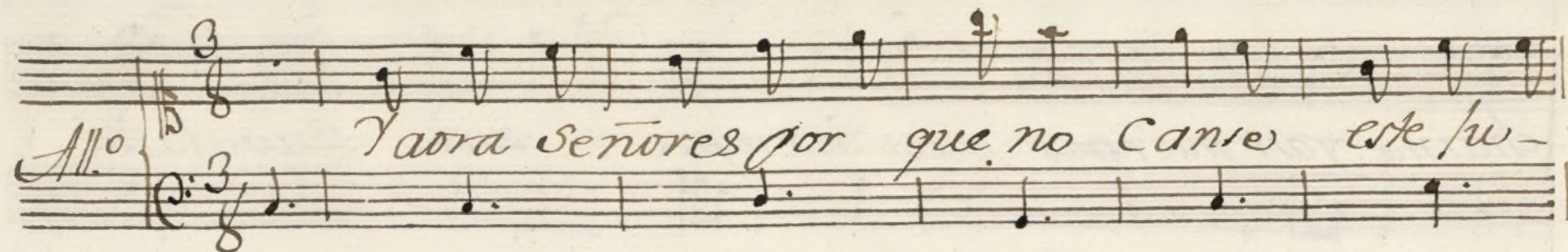




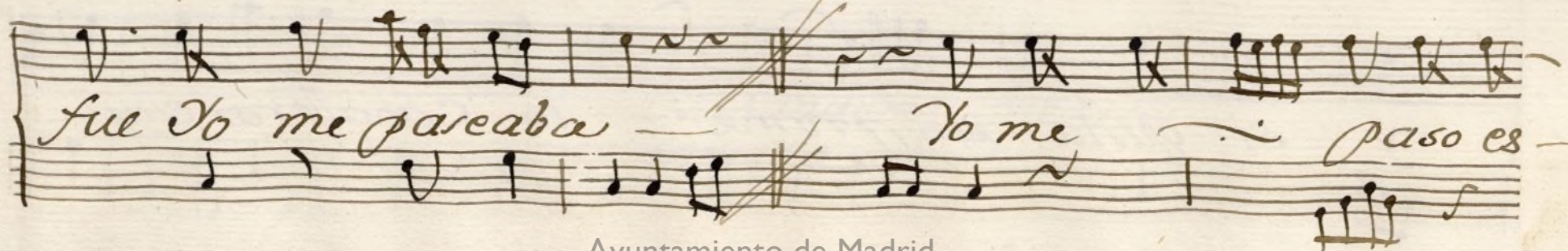
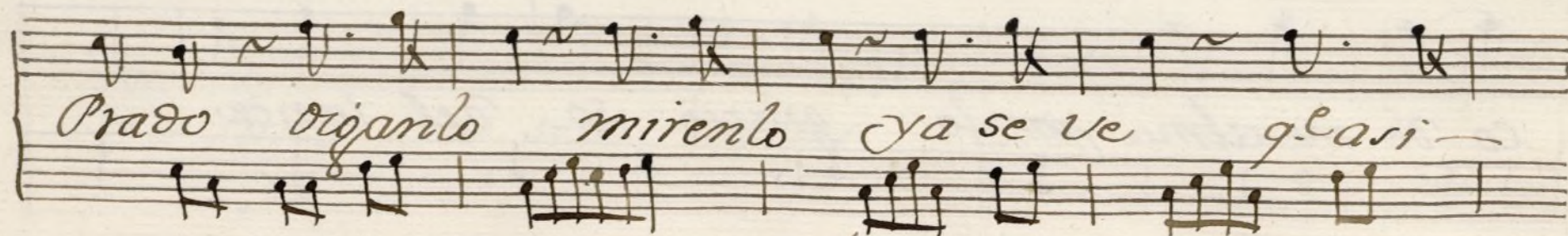
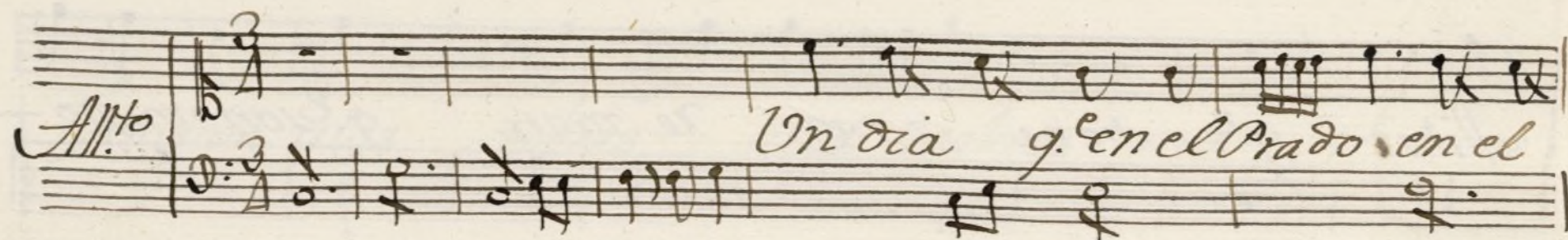
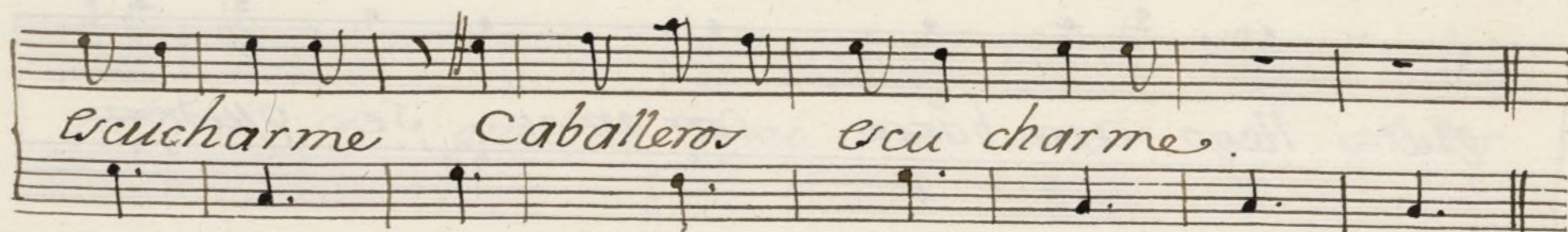
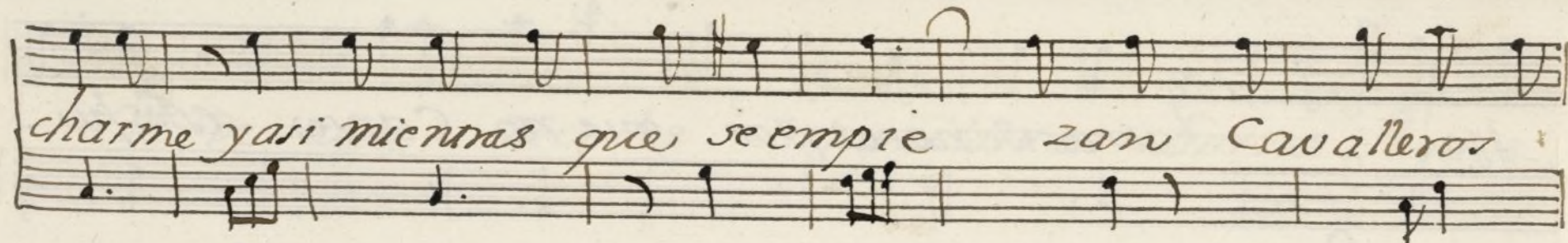




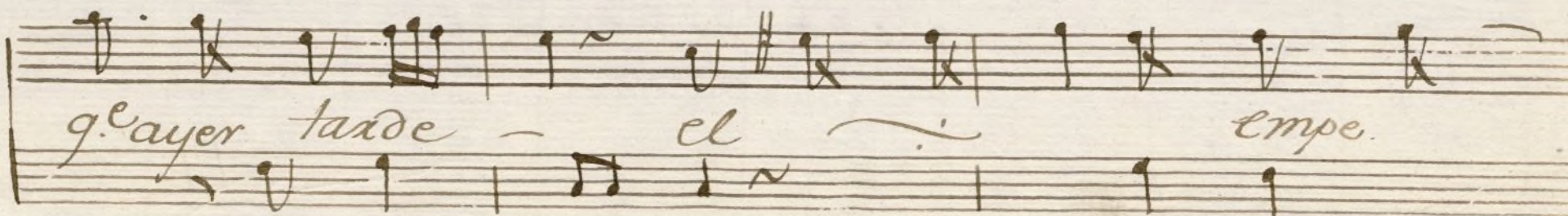
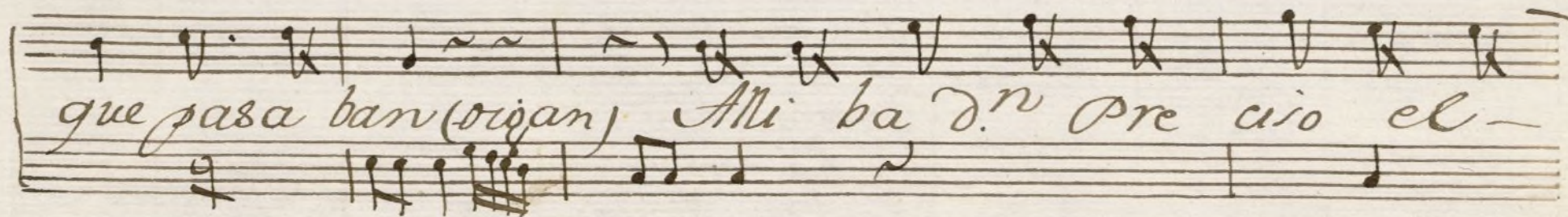
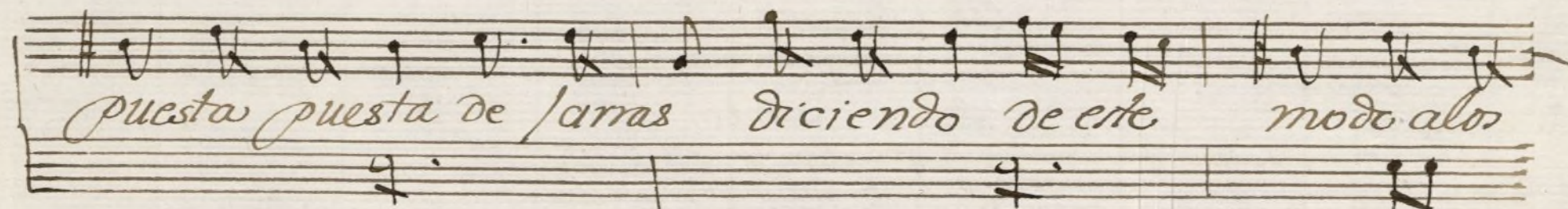
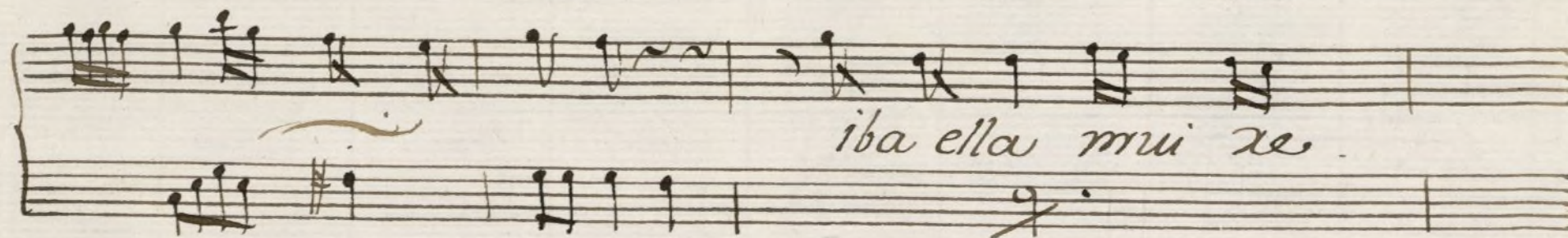
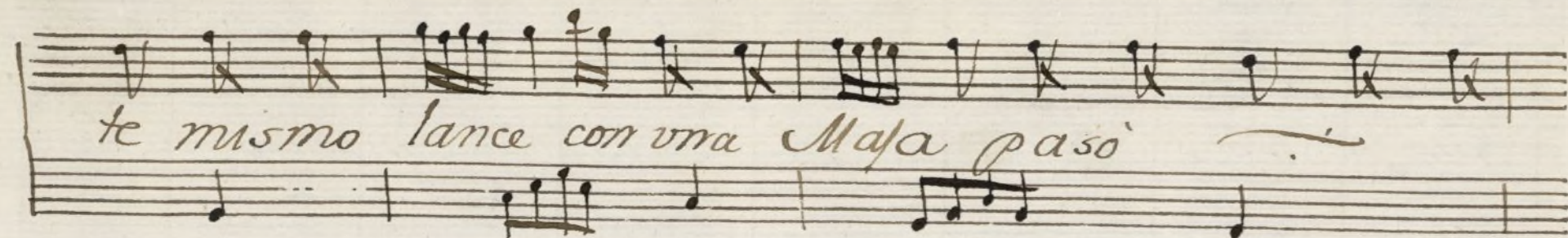




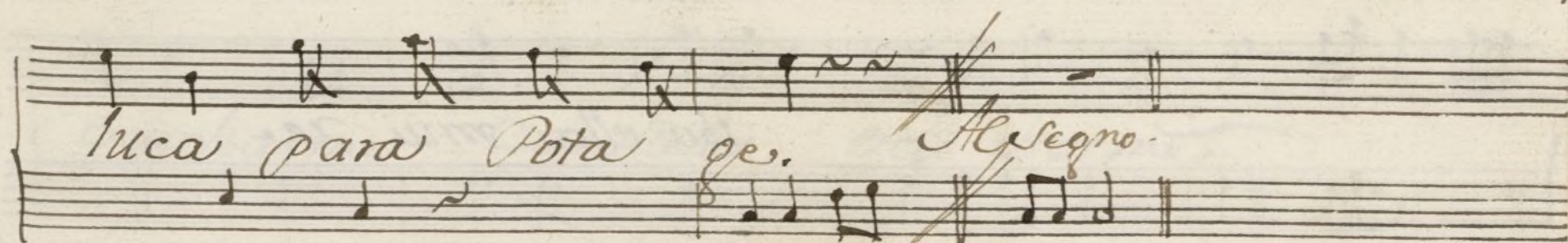
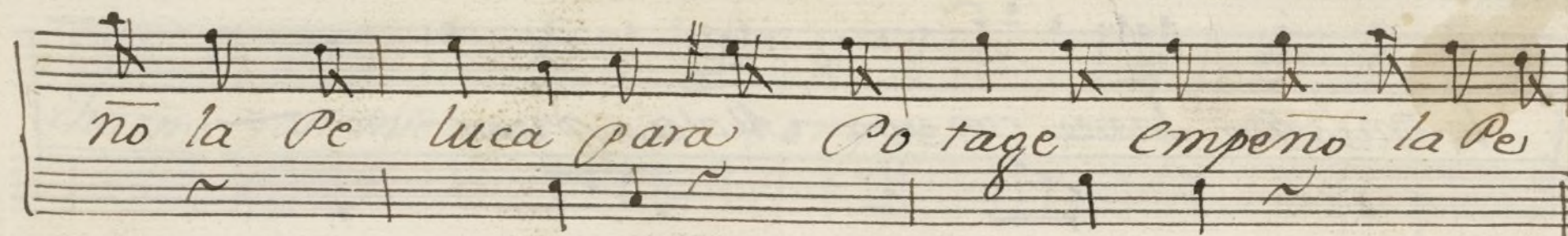












Me parecia V.

Dijo aiba Dona Urra

con su braceo

y andaba a quatro dias

Vendiendo sebo

Aqui se acaba

el perdon suplicando

de tantas faltas iba ella V.

Alli ba don telonio

Caxa de Abuso

que por no merca bazo

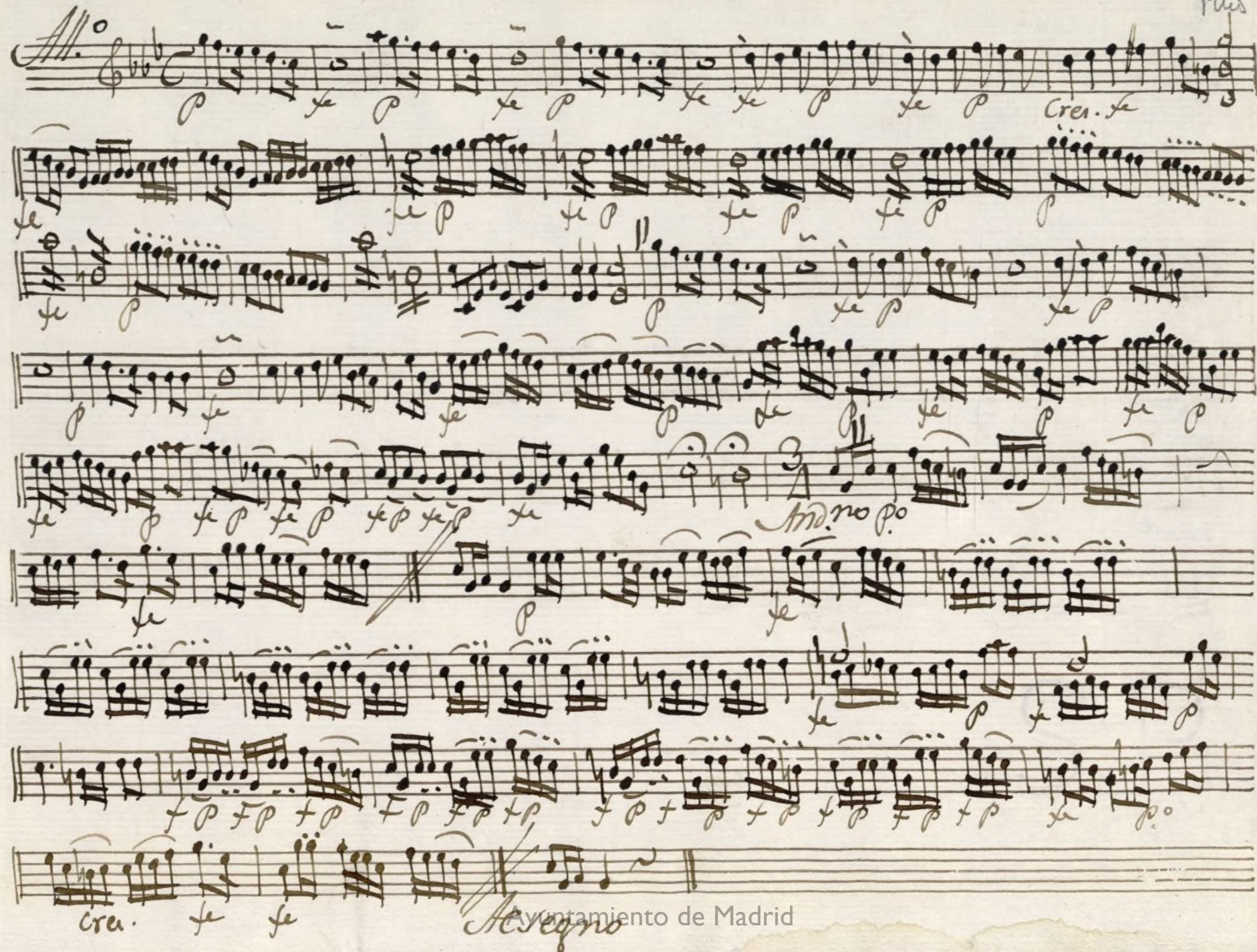
bebe en Alcazar.



Violin 1.ª *Ton. a solo de la Súplica.* Carrera.

Mus 84-3

Handwritten musical score for Violin 1.ª, titled "Ton. a solo de la Súplica." by Carrera. The score is written on ten staves, featuring various musical notations including notes, rests, and dynamic markings. The key signature is one flat (B-flat), and the time signature is 4/4. The score includes dynamic markings such as *Allo*, *p*, *se*, *Cres. se*, *meno po*, and *cre. se*. The piece concludes with a double bar line and a fermata. The manuscript is signed "Alegno" at the bottom.





Handwritten musical score on ten staves. The notation includes treble and bass clefs, a 3/4 time signature, and various musical symbols such as notes, rests, and dynamic markings like 'fe' and 'p'. The score is written in a cursive, handwritten style. The first staff begins with a treble clef and a 3/4 time signature. The second staff begins with a bass clef and a 3/4 time signature. The third staff begins with a treble clef and a 3/4 time signature. The fourth staff begins with a bass clef and a 3/4 time signature. The fifth staff begins with a treble clef and a 3/4 time signature. The sixth staff begins with a bass clef and a 3/4 time signature. The seventh staff begins with a treble clef and a 3/4 time signature. The eighth staff begins with a bass clef and a 3/4 time signature. The ninth staff begins with a treble clef and a 3/4 time signature. The tenth staff begins with a bass clef and a 3/4 time signature. The score concludes with the handwritten text 'Al Segno dos mas.' at the bottom right.



Violin 1.<sup>o</sup> Ton.<sup>a</sup> a Solo de la Suplica.

Handwritten musical score for Violin 1, titled "Violin 1.<sup>o</sup> Ton.<sup>a</sup> a Solo de la Suplica." The score is written on ten staves. The first staff is the title line. The second staff begins with a treble clef, a key signature of two flats (B-flat and E-flat), and a common time signature (C). The music is written in a single system. The notation includes various musical symbols such as notes, rests, and dynamic markings. The word "Cresc." is written above the third staff, and "And.<sup>no</sup> p." is written below the sixth staff. The word "segno." is written at the end of the tenth staff. The score is marked with "p" (piano) and "f" (forte) throughout. The manuscript is on aged, slightly stained paper.

*Cresc.*

*And.<sup>no</sup> p.*

*segno.*

Ayuntamiento de Madrid



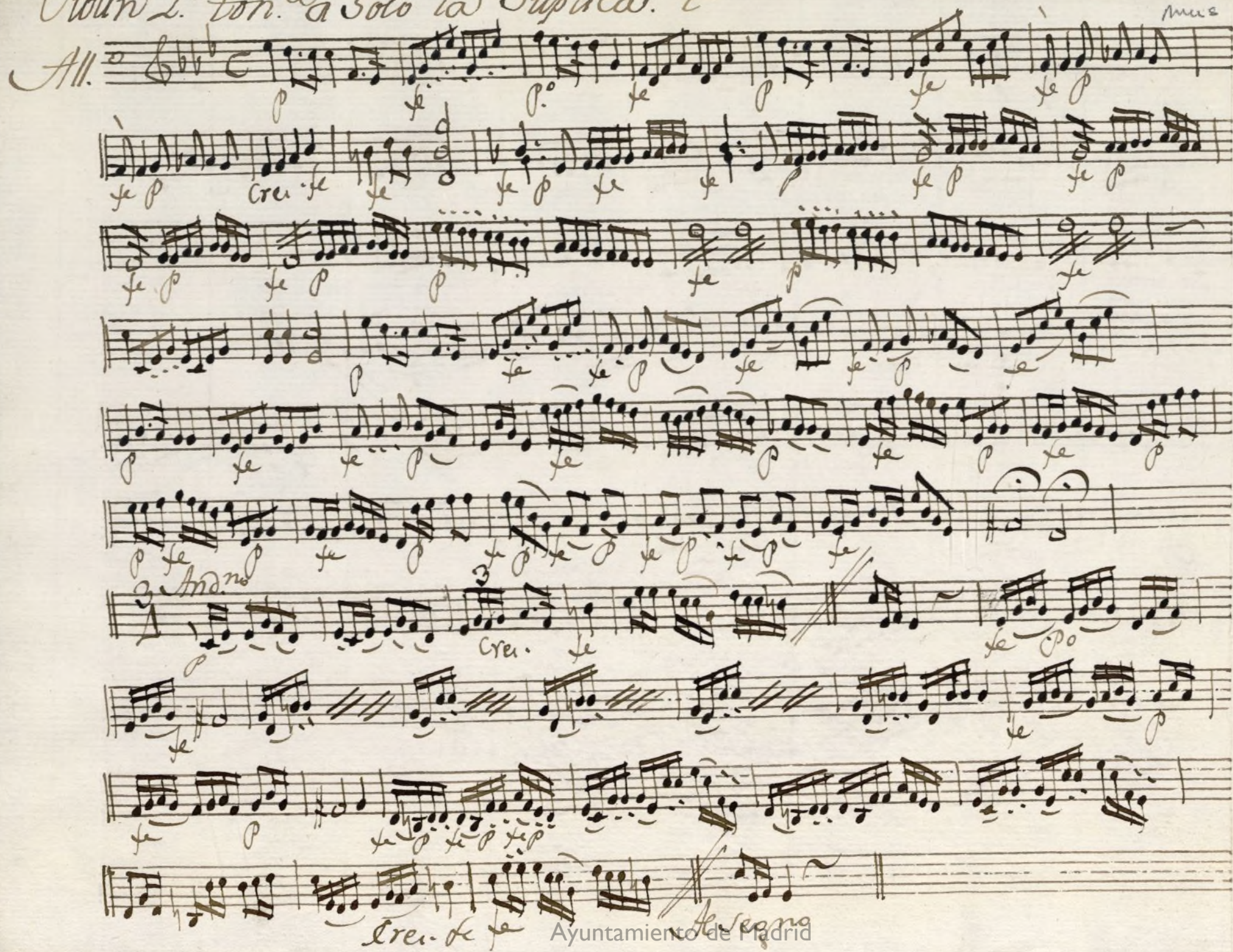
Handwritten musical score on ten staves, organized into two systems of five staves each. The notation is in treble clef with a 3/8 time signature. The music features complex rhythmic patterns, including many beamed sixteenth and thirty-second notes, and rests. Dynamic markings such as *fe* (forte) and *p* (piano) are written throughout. The first system concludes with a double bar line. The second system begins with a new section marked by a double bar line and a repeat sign. It includes a section with a 3/8 time signature and a key signature change to one sharp (F#). The piece ends with a double bar line and the instruction *Al Segno dos mas.* written in cursive below the final staff.



Violin 2.<sup>o</sup> ton.<sup>a</sup> solo la Suplica. t

ms 84-3

All.





A handwritten musical score on aged, slightly torn paper. The score consists of ten staves of music, followed by two empty staves at the bottom. The notation is in treble clef with a key signature of one sharp (F#) and a 3/4 time signature. The music features a variety of note values, including eighth and sixteenth notes, and rests. There are several dynamic markings, including 'p' (piano) and 'f' (forte), and some slurs. The handwriting is in dark ink, and the paper shows signs of age, including discoloration and small tears. The score is written in a single system, with the music continuing across the staves. The final staff of music ends with a double bar line and the word 'Allegro.' written below it.



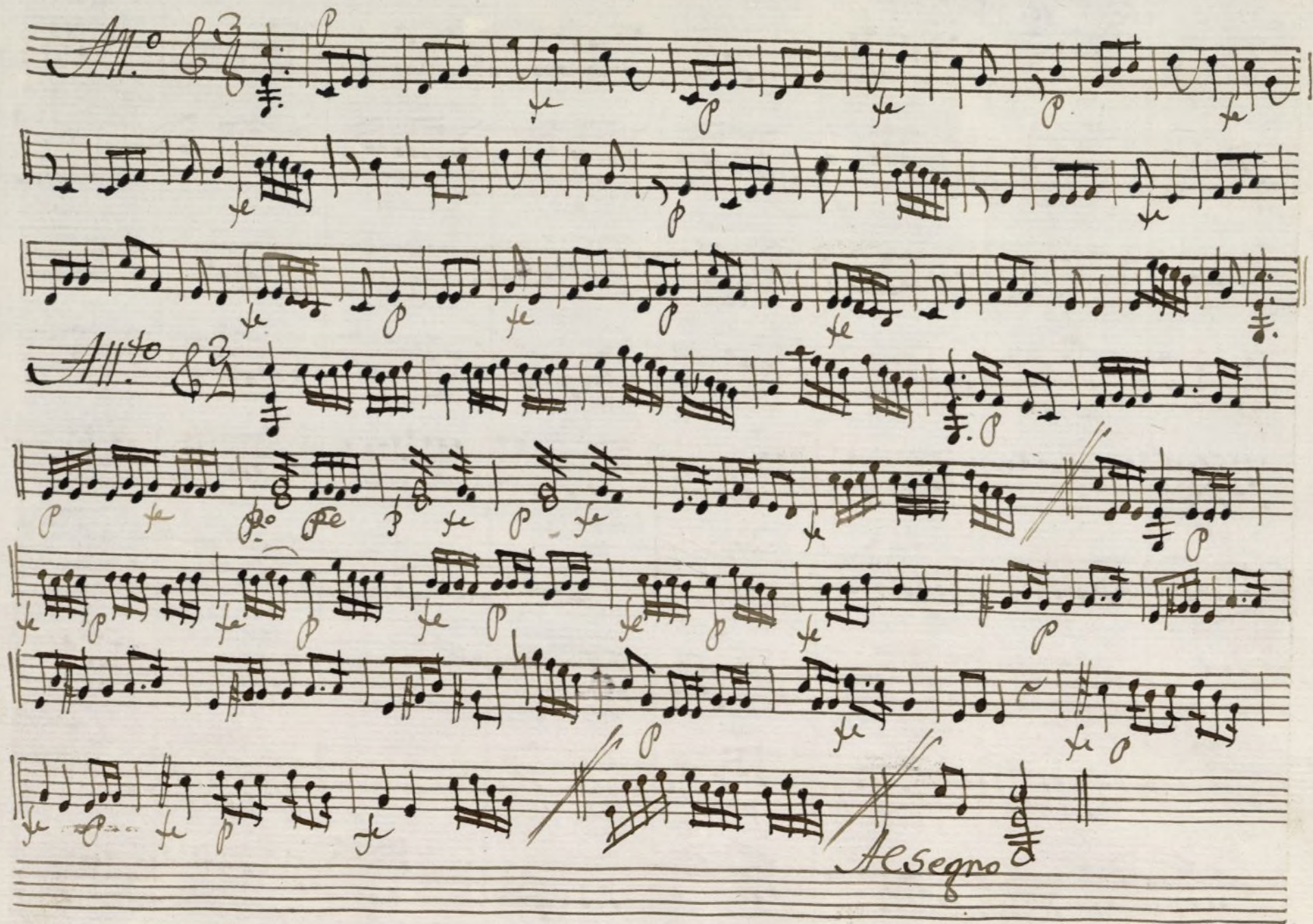
Violini 2.<sup>o</sup> ton.<sup>a</sup> la Suplica.

mus 84-3

All.

Clavin 2. 10h. 1a. Caprica.  
 All.







# Bajo Tona Solo la Suplica

Handwritten musical score for 'Bajo Tona Solo la Suplica'. The score is written on ten staves. The first staff is a treble clef with a key signature of one flat (B-flat) and a common time signature (C). The music is written in a single melodic line. The notation includes various note values, rests, and dynamic markings such as 'se', 'p', and 'f'. There are also some performance instructions like 'And. no' and 'Allegro.' written below the staves. The score ends with a double bar line and a repeat sign.



Handwritten musical score on aged paper, featuring two systems of music. The first system begins with a treble clef, a key signature of one sharp (F#), and a 3/8 time signature. The notation includes various note values, rests, and dynamic markings such as *p* (piano) and *f* (forte). The second system continues the composition, ending with the instruction *Adsegno.* written in cursive. The paper shows signs of age, including discoloration and wear along the edges.