

Leg<sup>o</sup> 8 N<sup>o</sup> 15

Leg<sup>o</sup> 5<sup>o</sup> n.º 28

Mus 85-24

Flauta

Conadilla

a Solo

La Maza enfadada.

Con Viol<sup>o</sup> y Trompas.

28

1561



*And.<sup>te</sup> spacio.*

Handwritten musical score on aged, torn paper. The score is written in brown ink and features a variety of musical notations including staves, clefs, and notes. The lyrics are written in Spanish and are interspersed with the musical notation. The paper shows signs of wear, including tears and discoloration.

Lyrics:

Va q.<sup>es</sup> preciso q.<sup>en</sup> esta tarde  
mosquetexitos mios servir os trate Mosquetexito  
ay atencion



q.<sup>e</sup> viene la Joachina a divertirnos oy Mus 85-24

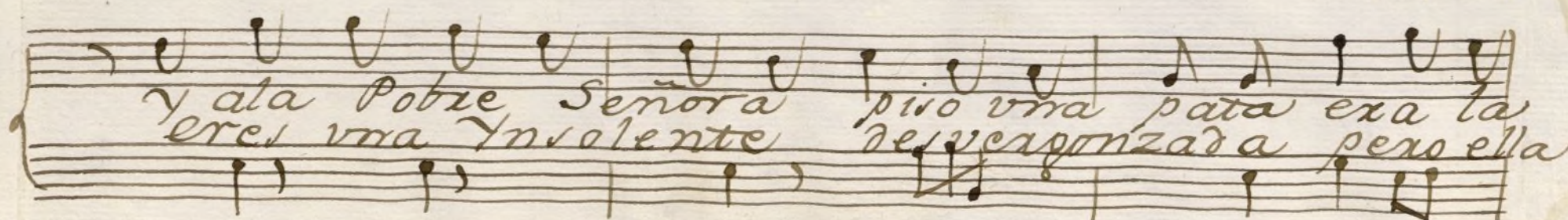
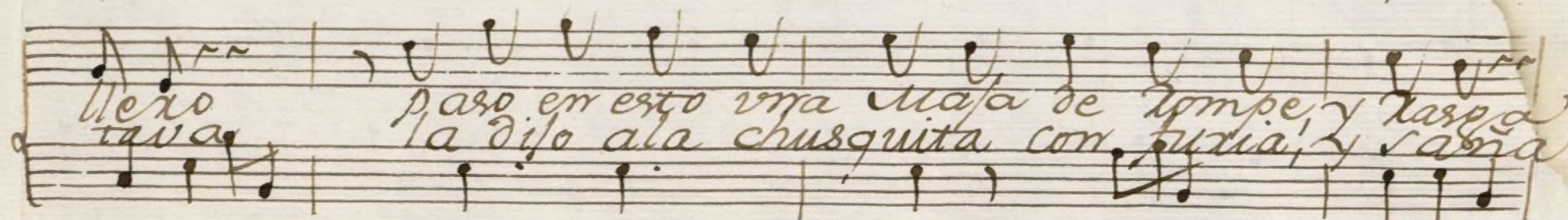
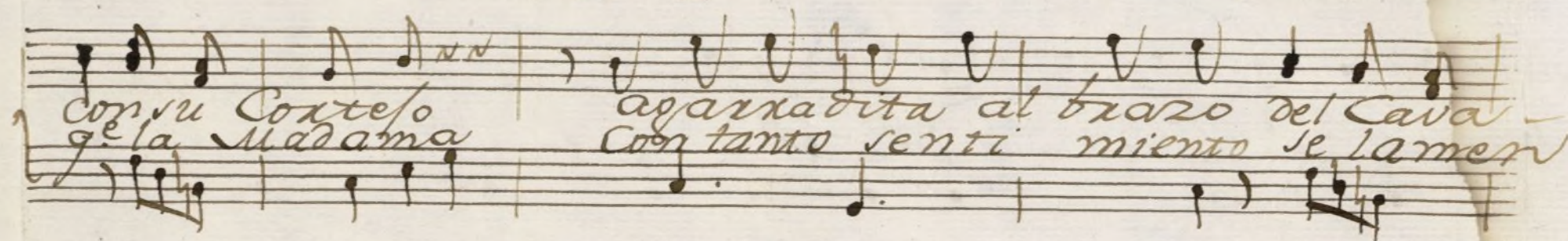
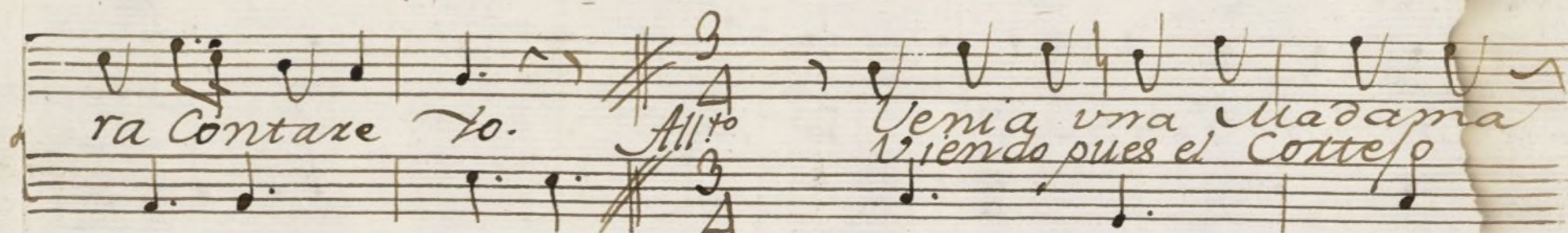
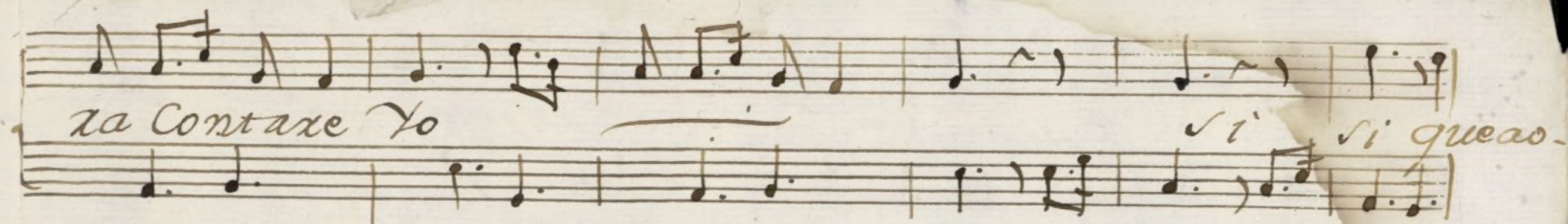
con una tonadilla de gusto, y de primor

una tarde al paseo señores baje Yo

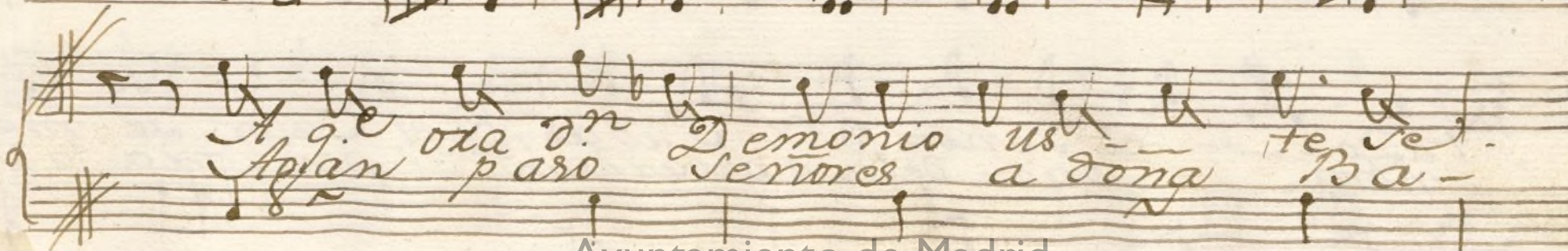
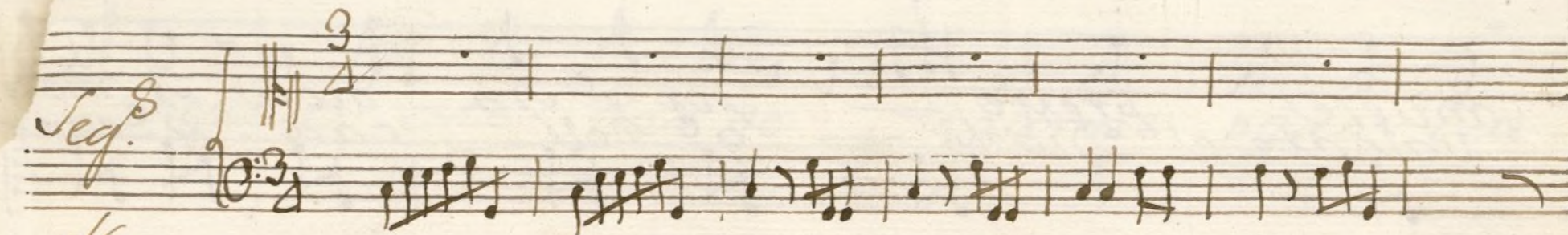
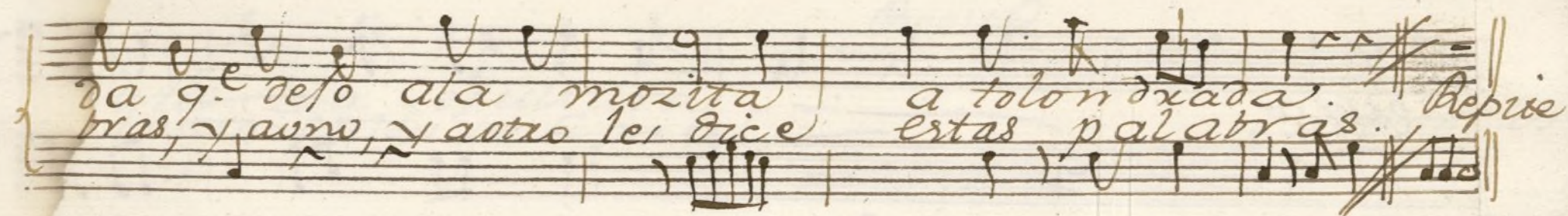
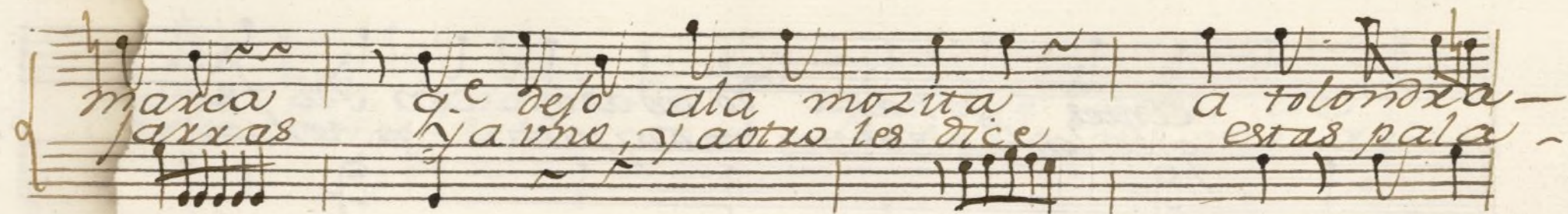
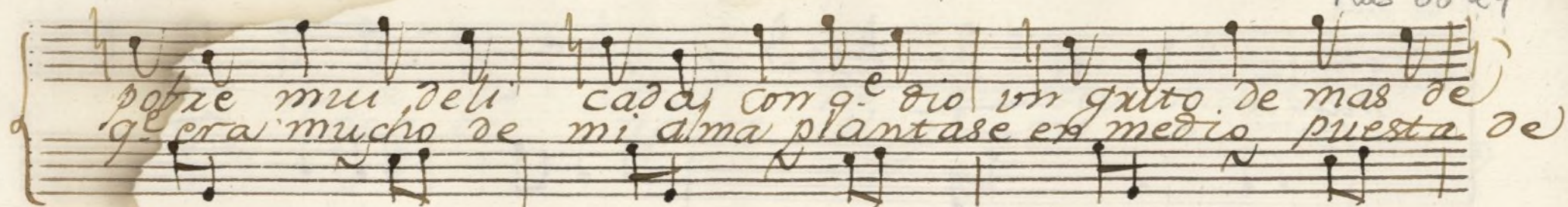
a divertir me un poco y junto a mi paró

un cierto lance cito si Lance cito que ao-

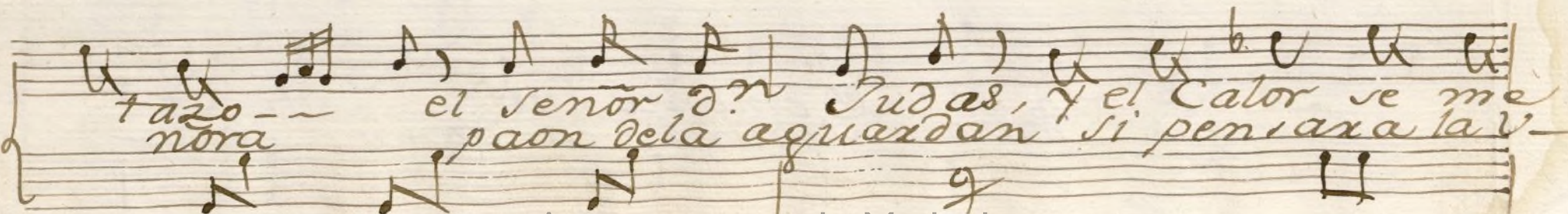
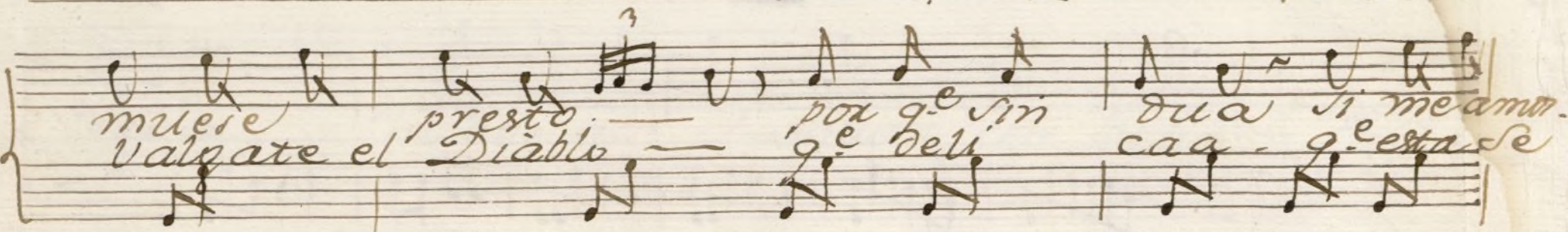
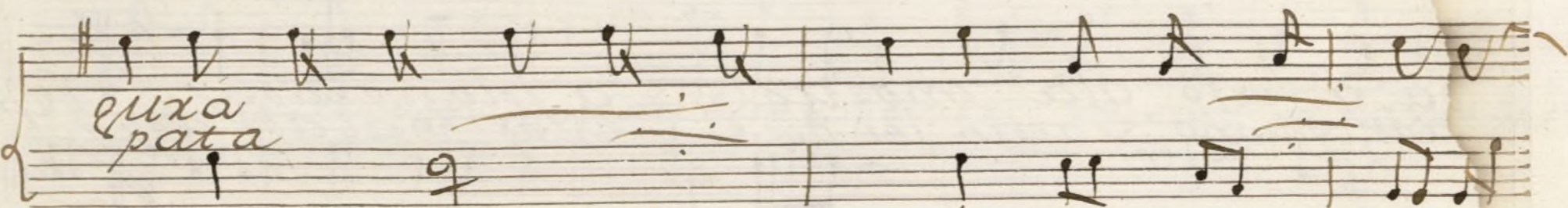
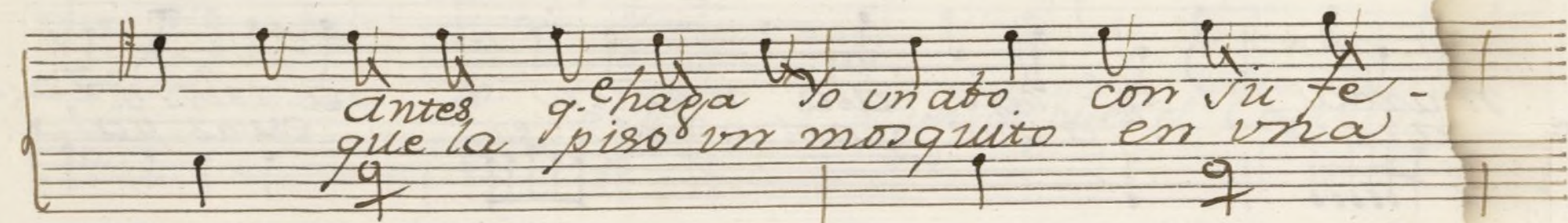
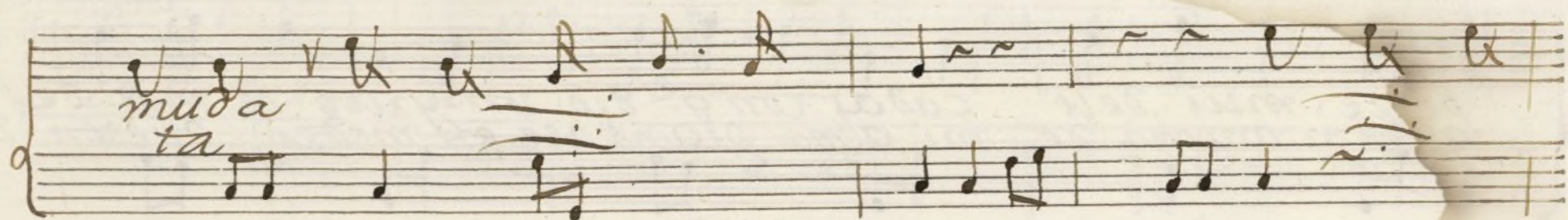




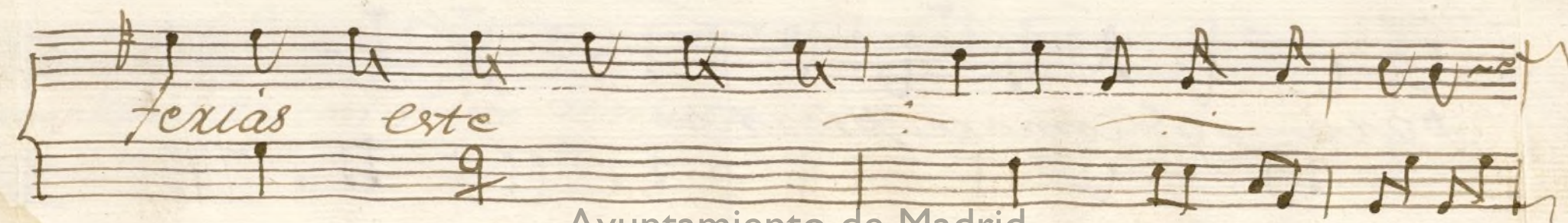
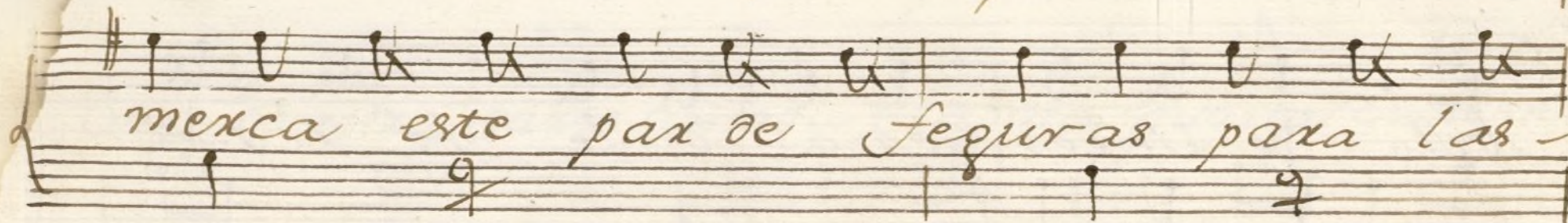
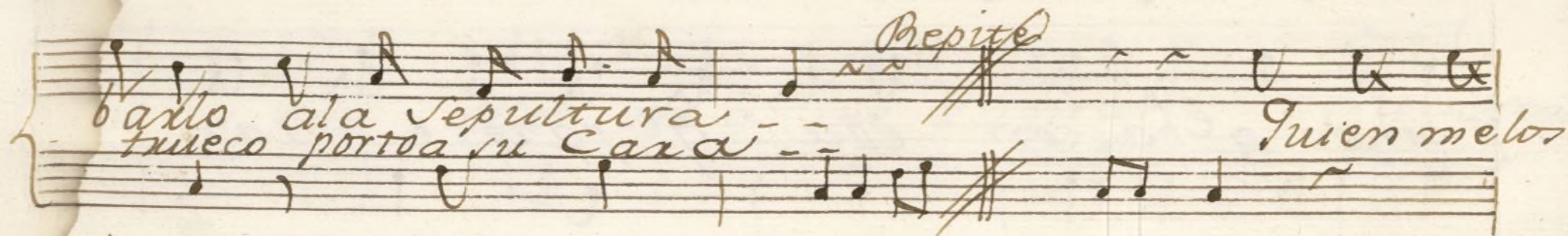
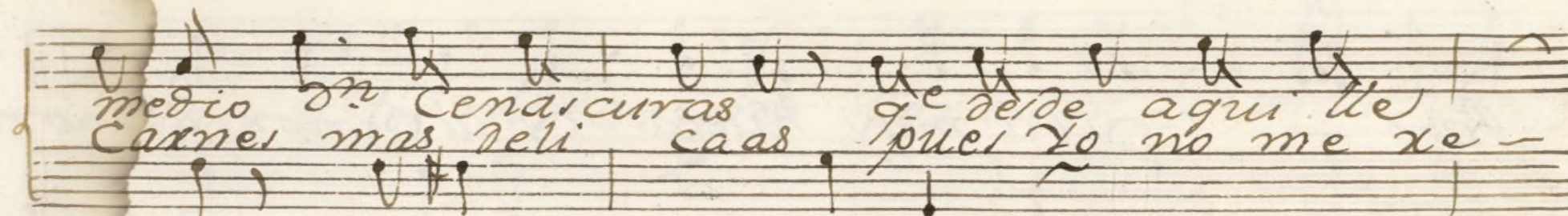
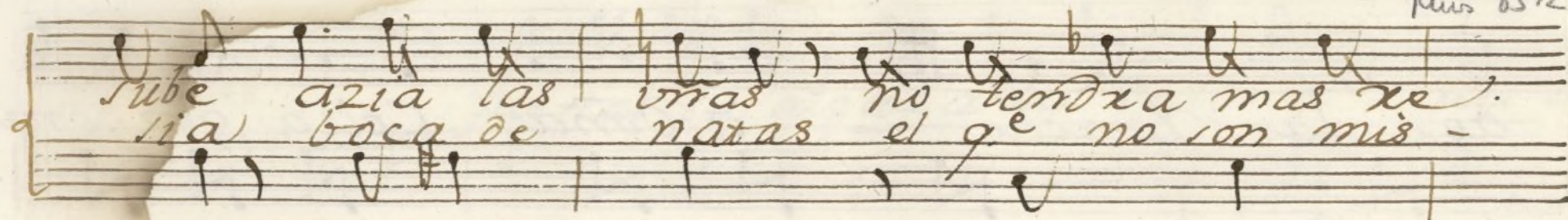














aganta Xancho — a Doña Celia q<sup>da</sup> comio

Pao — y ba muy hueca y al Señor D<sup>n</sup> Lon-

ginos q<sup>da</sup> ba con ella q<sup>e</sup> parece xa-

billo de Vexengena denle dos Xeales

para q<sup>e</sup> Comp<sup>re</sup> piernas.



*All.<sup>o</sup>* fue tal la algazara de los g.<sup>e</sup> halli es.

Mus 85-24

tavan g.<sup>e</sup> los dos Señores Corridos se marchan yo -

no fui tras ellos por q.<sup>e</sup> me llamaba otra cierta

Con a g.<sup>e</sup> otra parte andaba era una mozita q.<sup>e</sup> dietra can

tavan a seguir dilla con q.<sup>e</sup> esto remata con



*Mod.<sup>to</sup>* *Quando el bol.*

can de Celos mi pecho abrasa

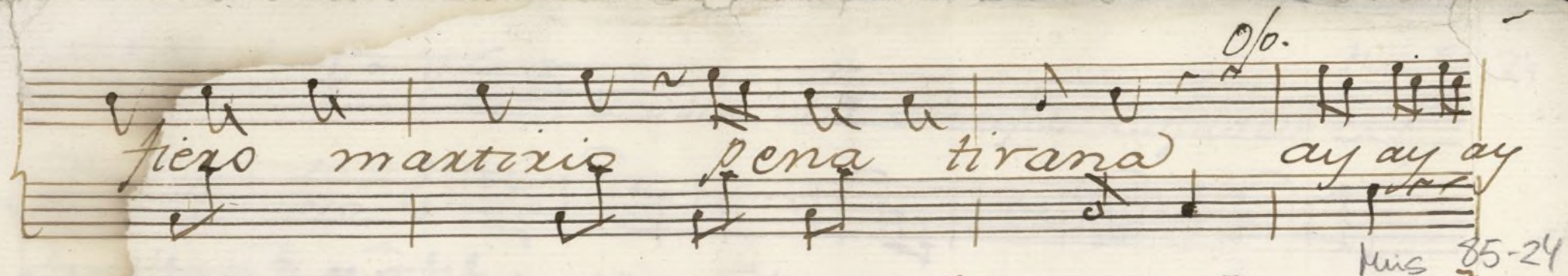
asi en eco la

menta mi triste alma

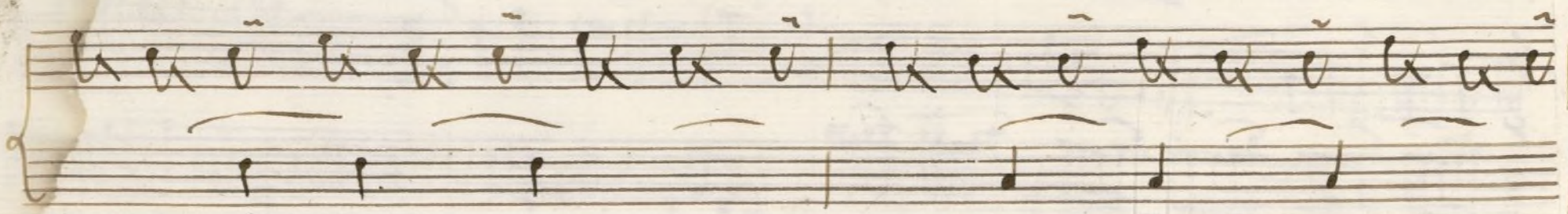
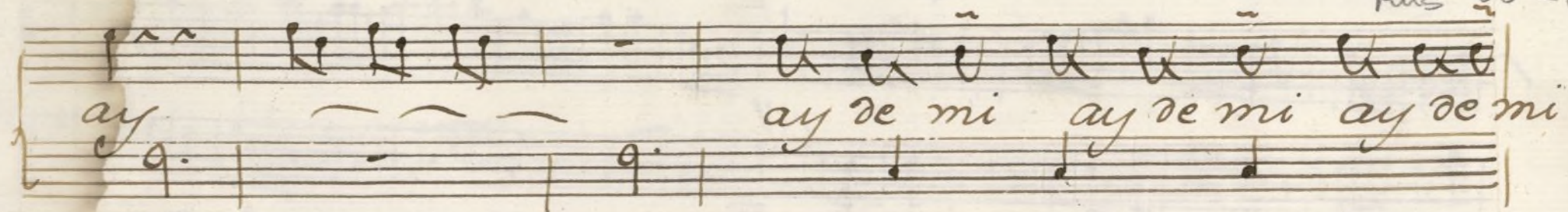
ay g.<sup>e</sup> tormento ay ay g.<sup>e</sup> ania







Mus 85-24





Ayuntamiento de Madrid







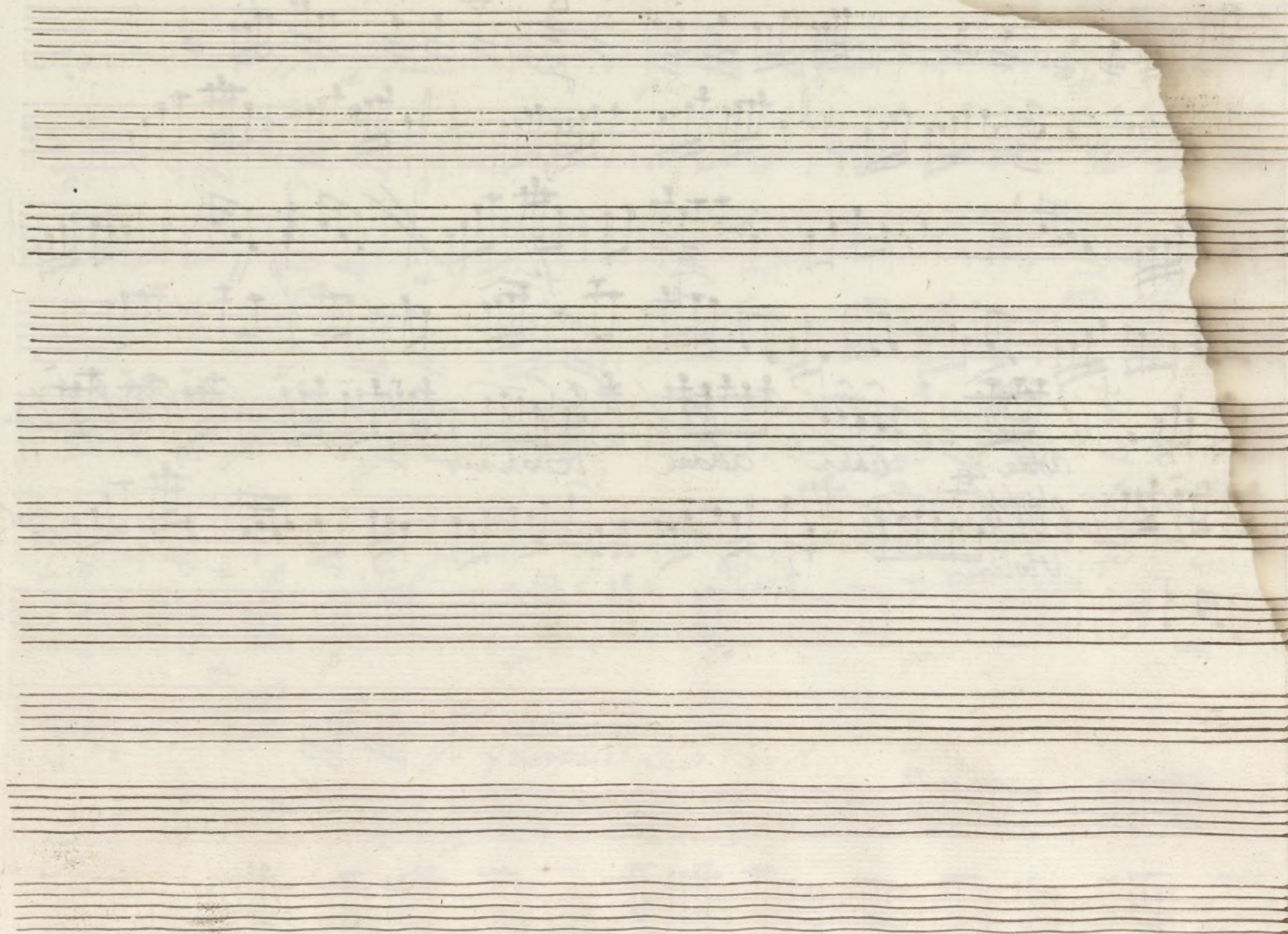
Handwritten musical score for a piece titled "Ayuntamiento de Madrid". The score is written on ten staves, organized into three systems of three staves each, with the final system consisting of two staves. The notation is in brown ink on aged, slightly stained paper.

The first system begins with the tempo marking "Alto" and the key signature of one flat (B-flat). The second system is marked "And.<sup>te</sup>" (Andante). The third system includes the tempo marking "Allegro" and the instruction "Al Segno y despues alor Parr." (Al Segno and then to the Parr.). The score features a variety of musical notations, including eighth and sixteenth notes, rests, and dynamic markings such as "p." (piano) and "f." (forte). The piece concludes with a double bar line.



Handwritten musical score on seven staves. The notation includes various musical symbols such as notes, rests, and dynamic markings. The second staff begins with "Mod. to" and a key signature change. The fifth staff has "Abbe Violin" and "Adagio Violante" written below it. The sixth staff has "Violin" written below it. The notation is dense and appears to be a sketch or a working draft.



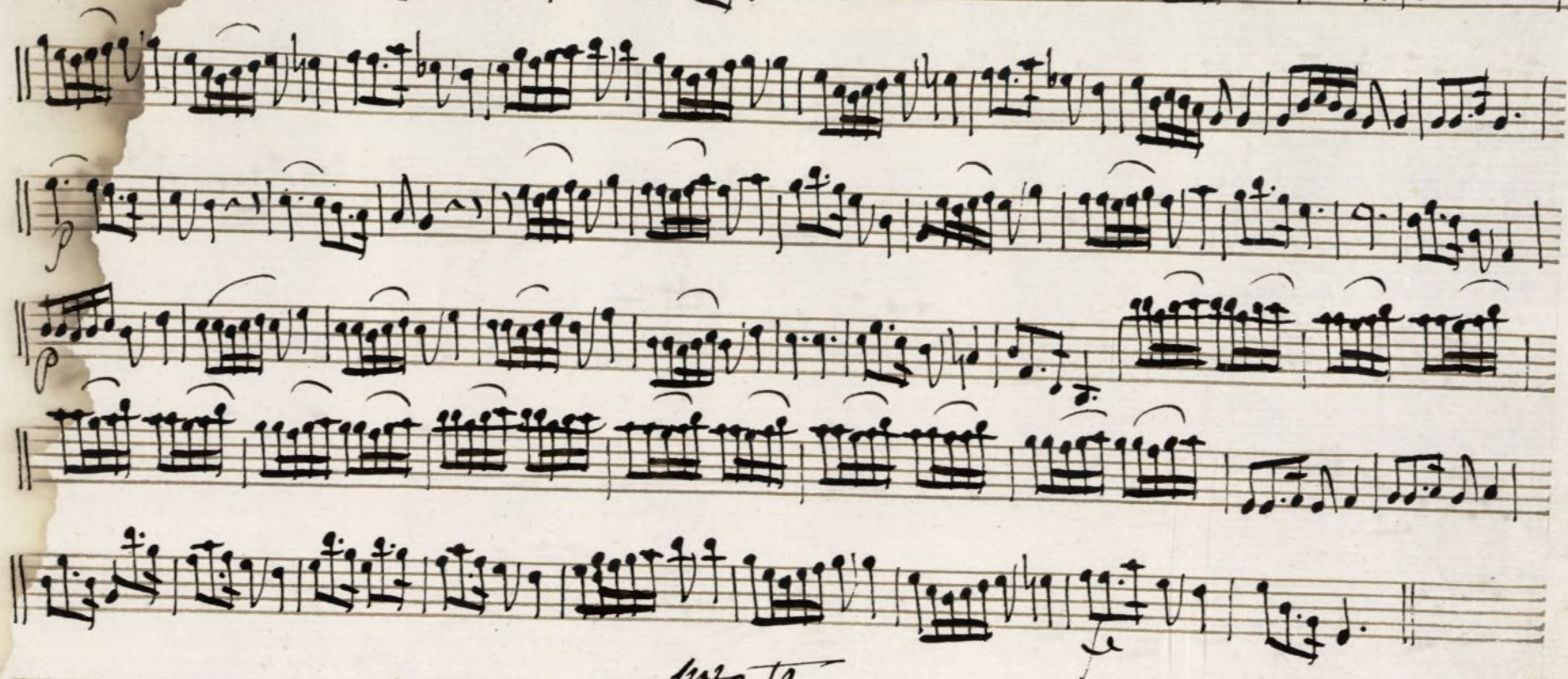


Ayuntamiento de Madrid

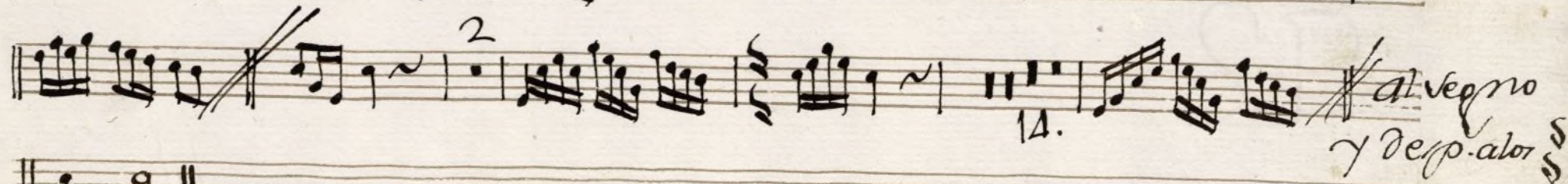
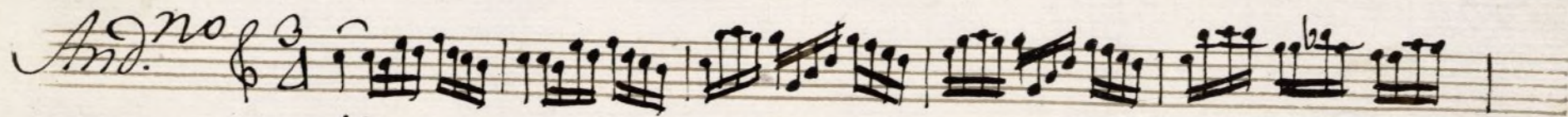


Violini 1.º oboe. ton.ª a solo. —  
And.<sup>te</sup> spacioſo.

Mus 85-24

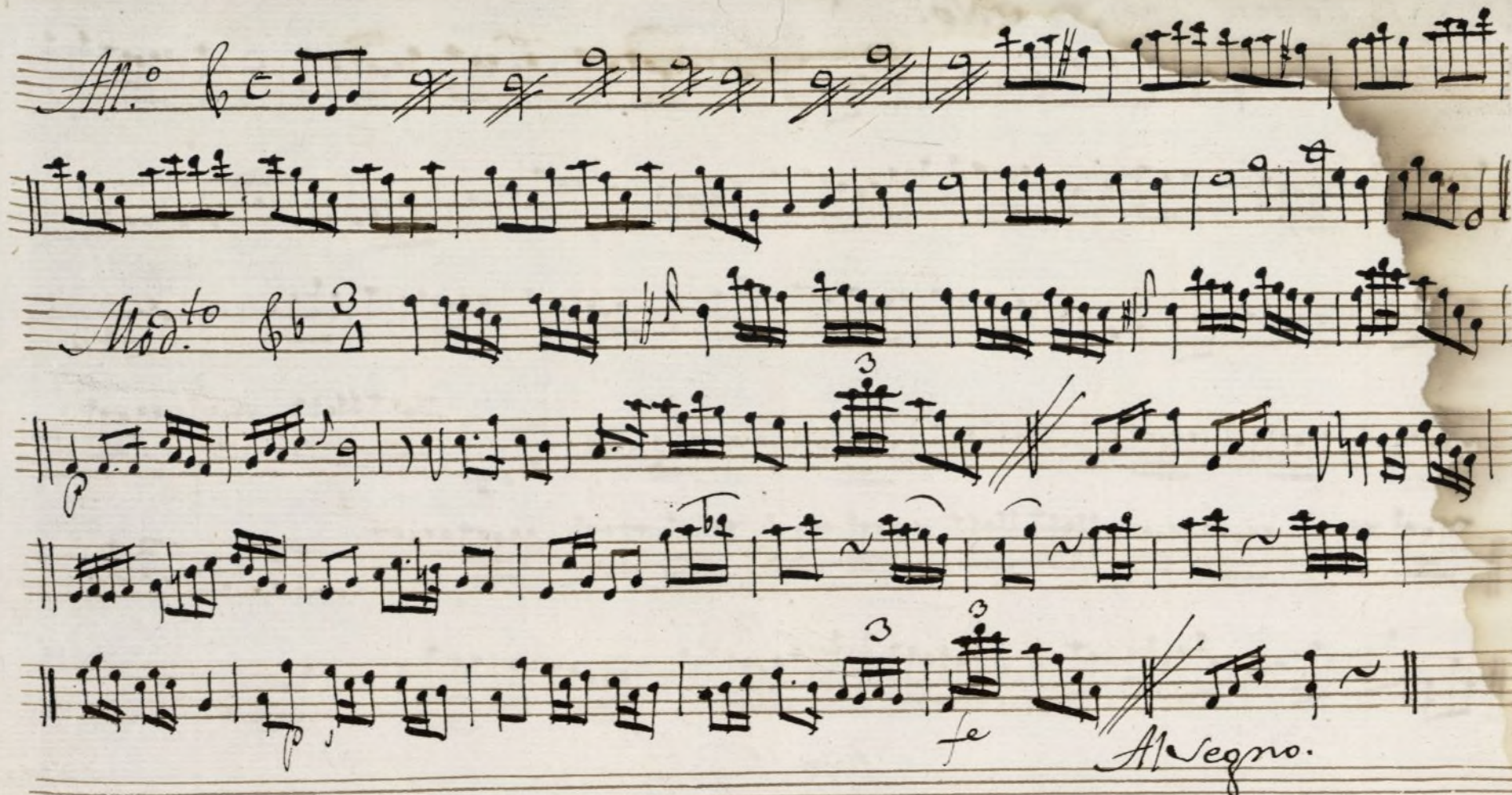


All.<sup>ro</sup> Tacet.



al vegno  
y desp. alor



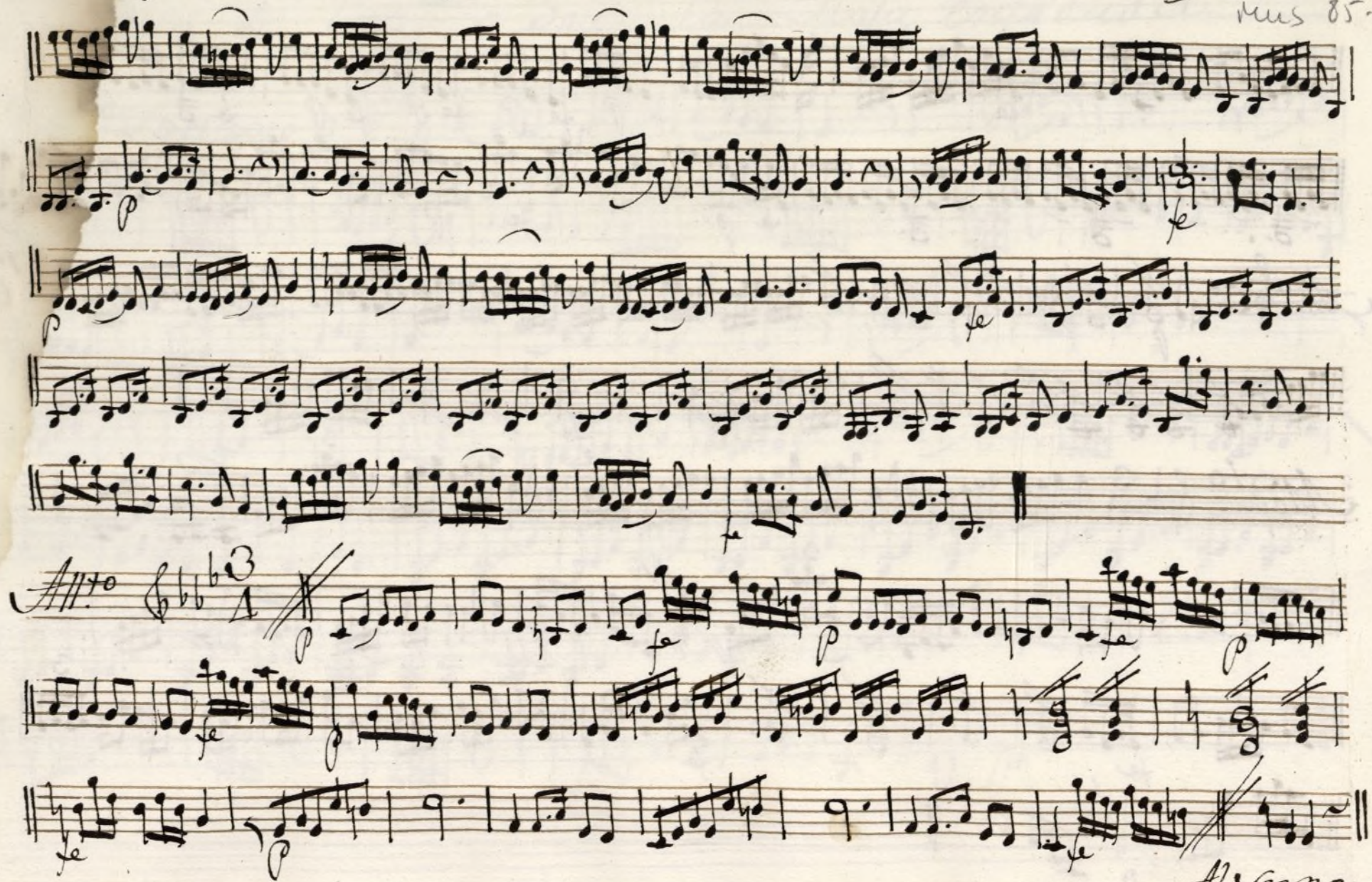




Violin 2.<sup>o</sup> Ton.<sup>a</sup> Solo.

And.<sup>te</sup> spacio.<sup>so</sup>

Mus 85-24



Allegro no.



And.<sup>no</sup> 3

Allegro y después ab.  
Parra for.

Allegro.

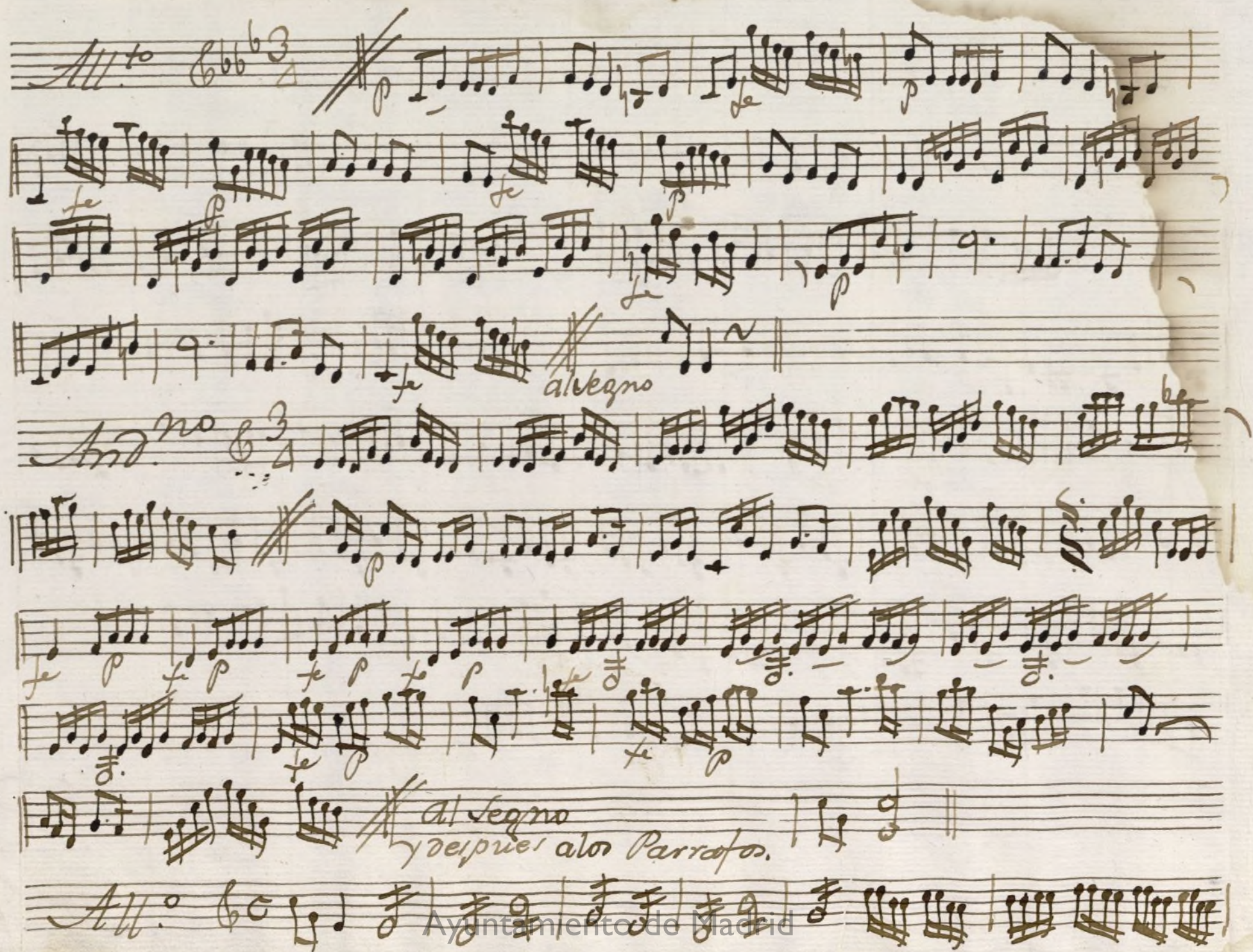


Violin 2.<sup>a</sup> Ton<sup>a</sup> a Solo. La maja enfadada.

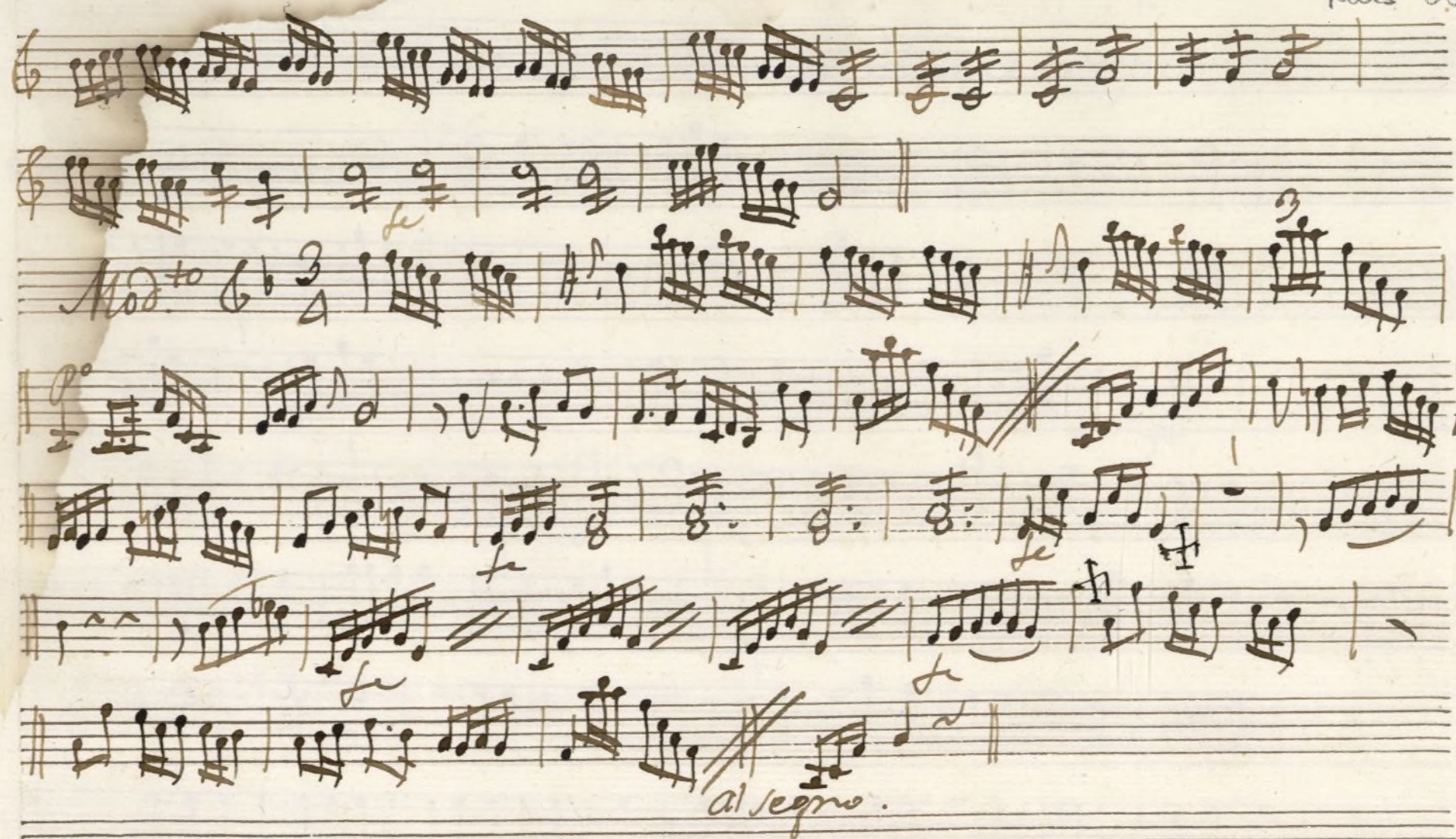
*And.<sup>te</sup> Spacioso*  $\text{F} \flat \flat \flat \text{6/8}$

V. P.











Ayuntamiento de Madrid



Trompa 1<sup>a</sup> Ton<sup>a</sup> a solo la uafa enfada da.

And.<sup>te</sup> Spacioso.  $\text{C}:\flat\flat 6$

fe

vol.

Alto  $\text{C}:\flat\flat 3$

2

V. P.



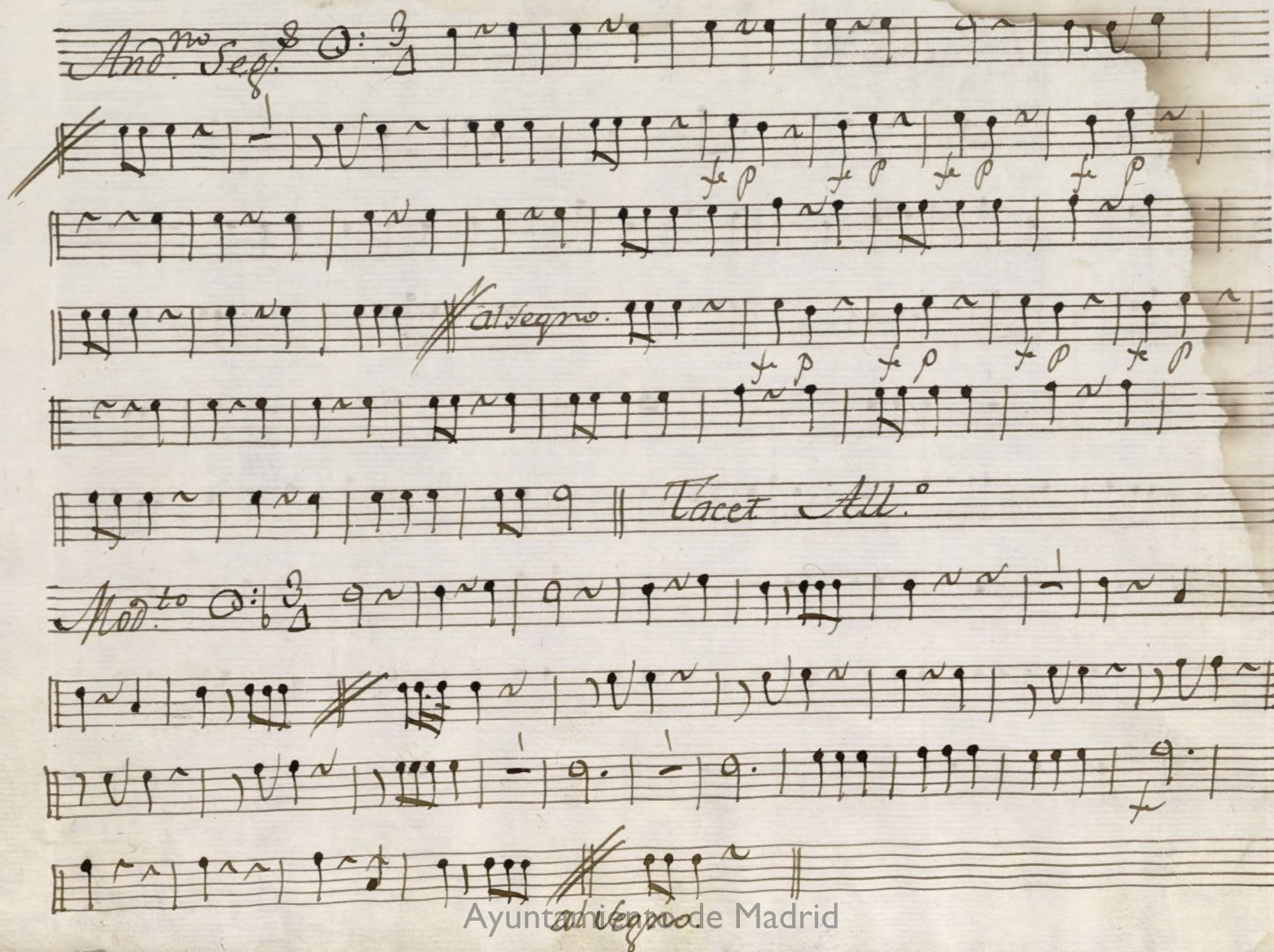
*And. Seg.*  $\text{C}:\frac{3}{4}$

*Allegro.*

*Tacet All.<sup>o</sup>*

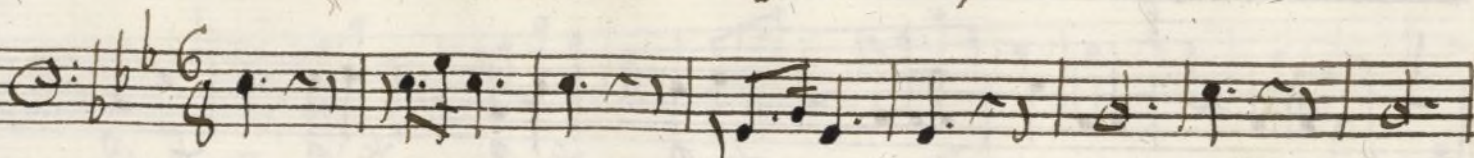
*Mod. to*  $\text{C}:\frac{3}{4}$

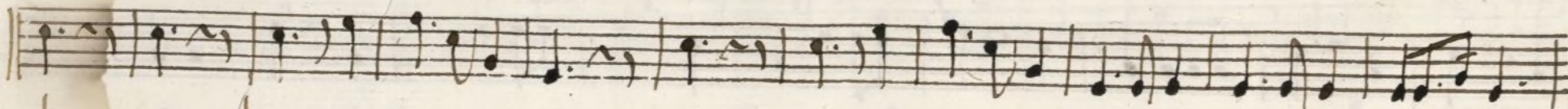
Ayuntamiento de Madrid

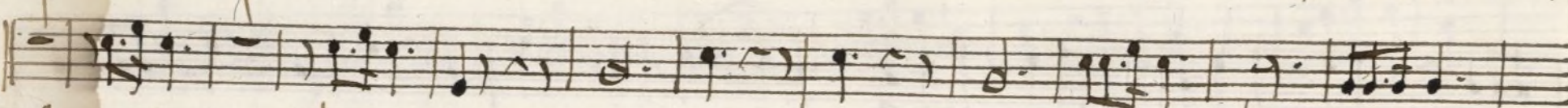


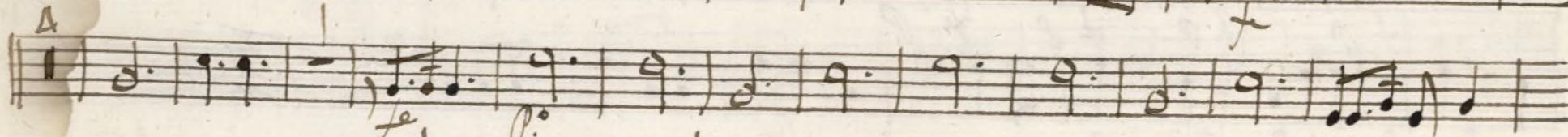


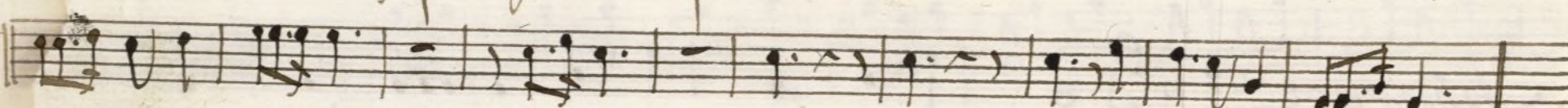
*Trompa 2.<sup>a</sup> Ton.<sup>a</sup> a Solo la Maja enfadada.*

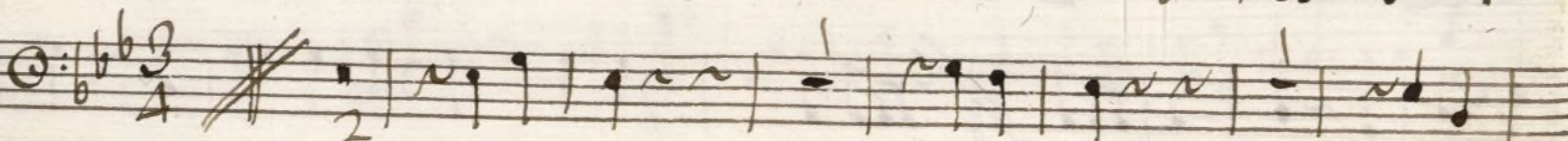
*And.<sup>te</sup> Spacioso.* 

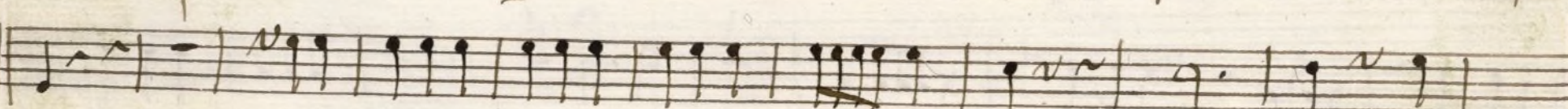








*Alto* 





*alvegno*

*U. P.*



*And. no Seg.*  $\text{C} \frac{3}{4}$

*Allegro*

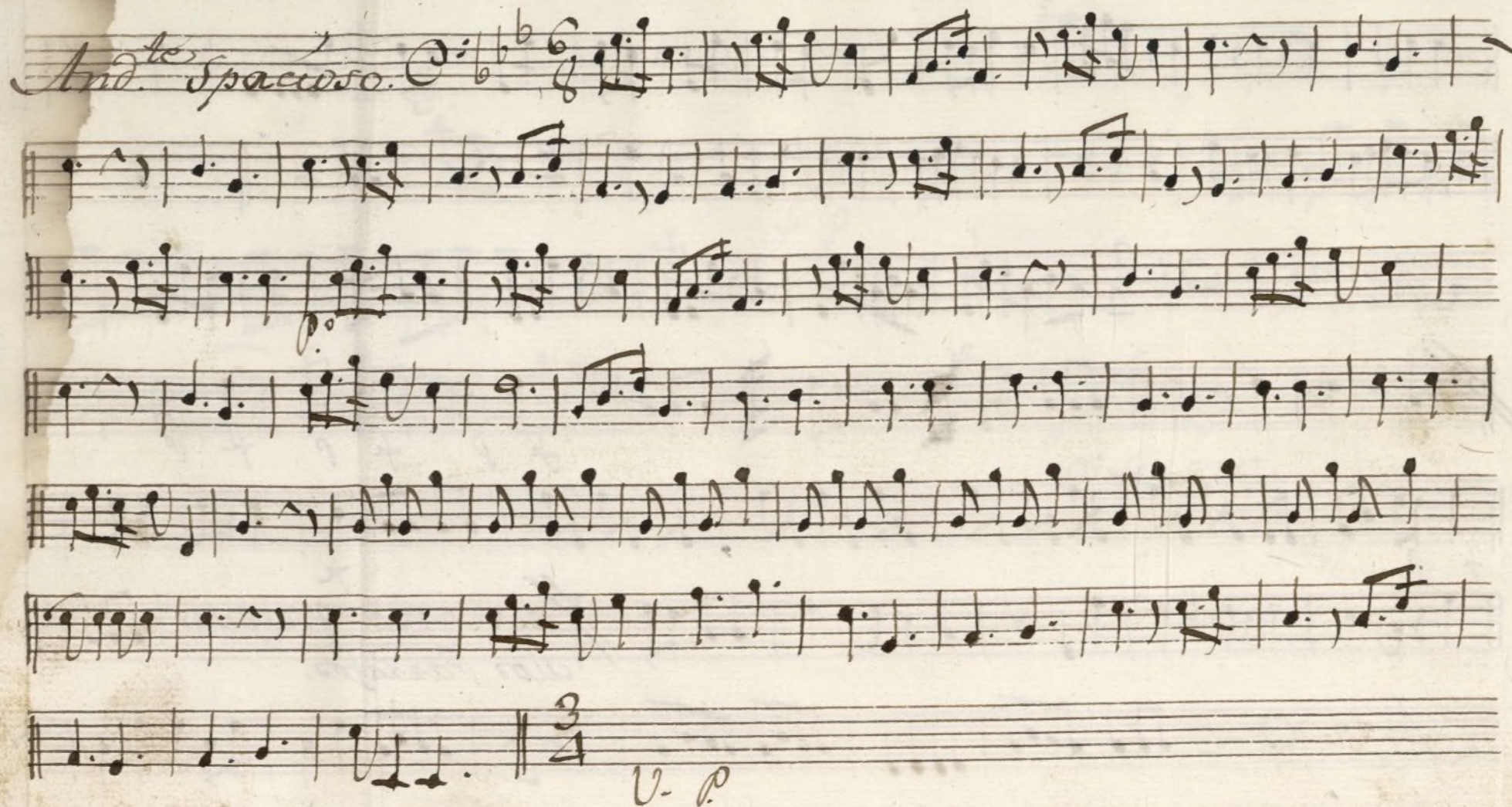
*Tacetto All.*

*Moderato.*  $\text{C} \frac{3}{4}$

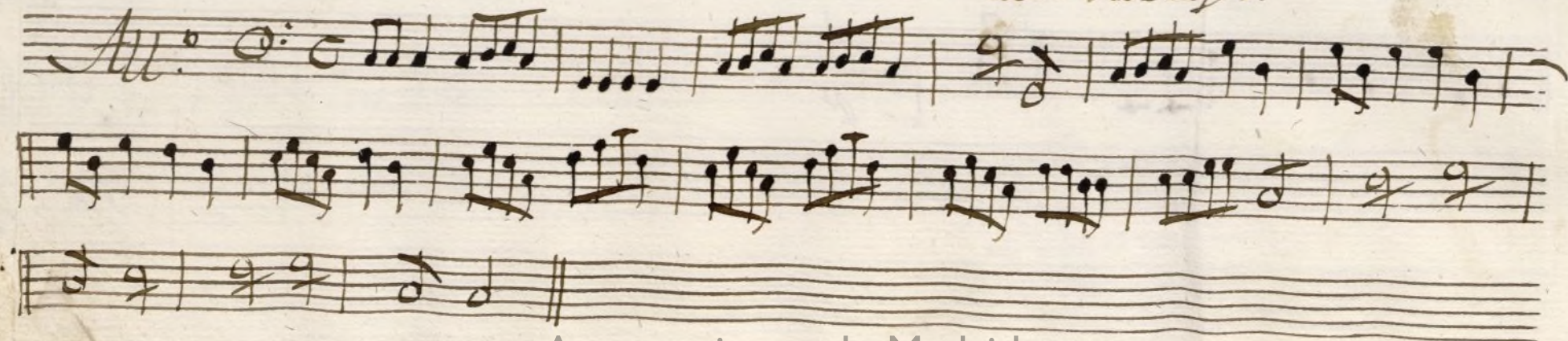
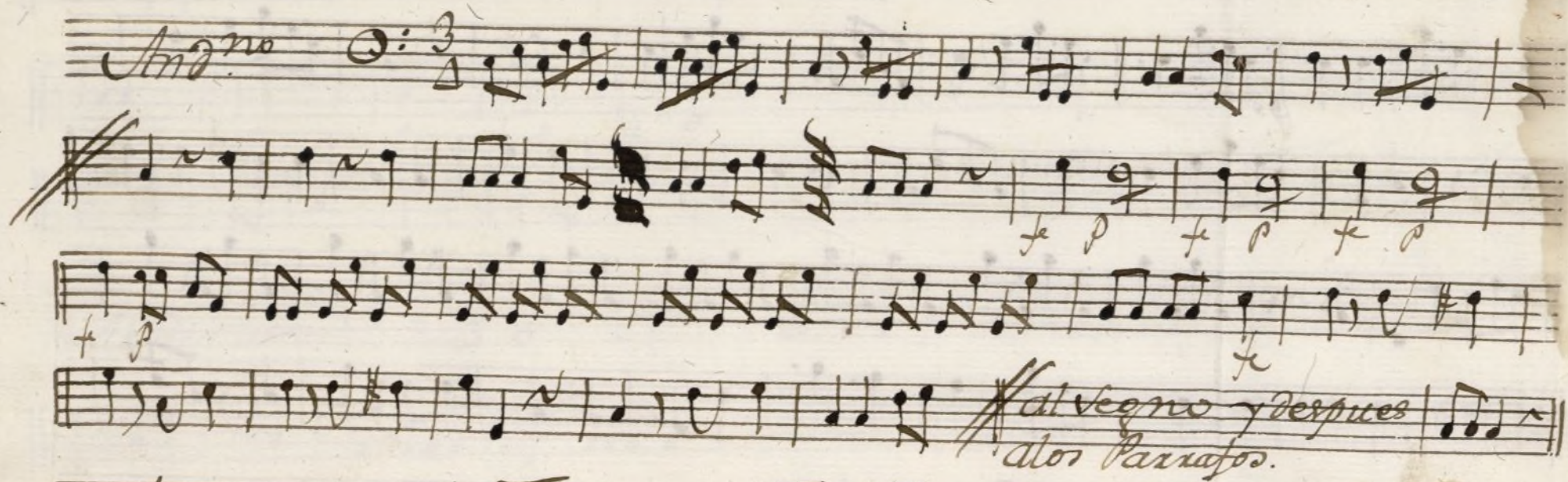
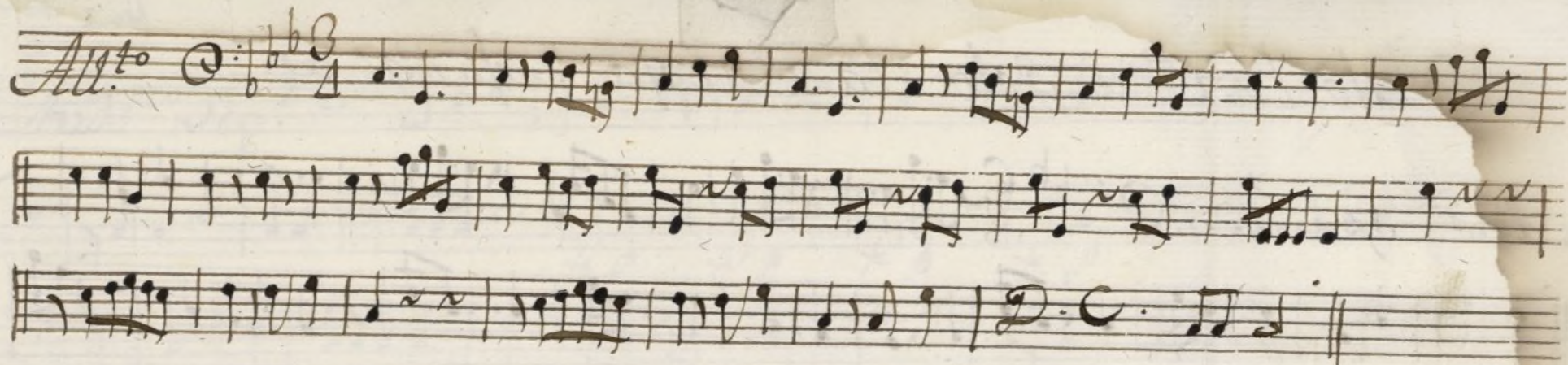
*al Vegno.*



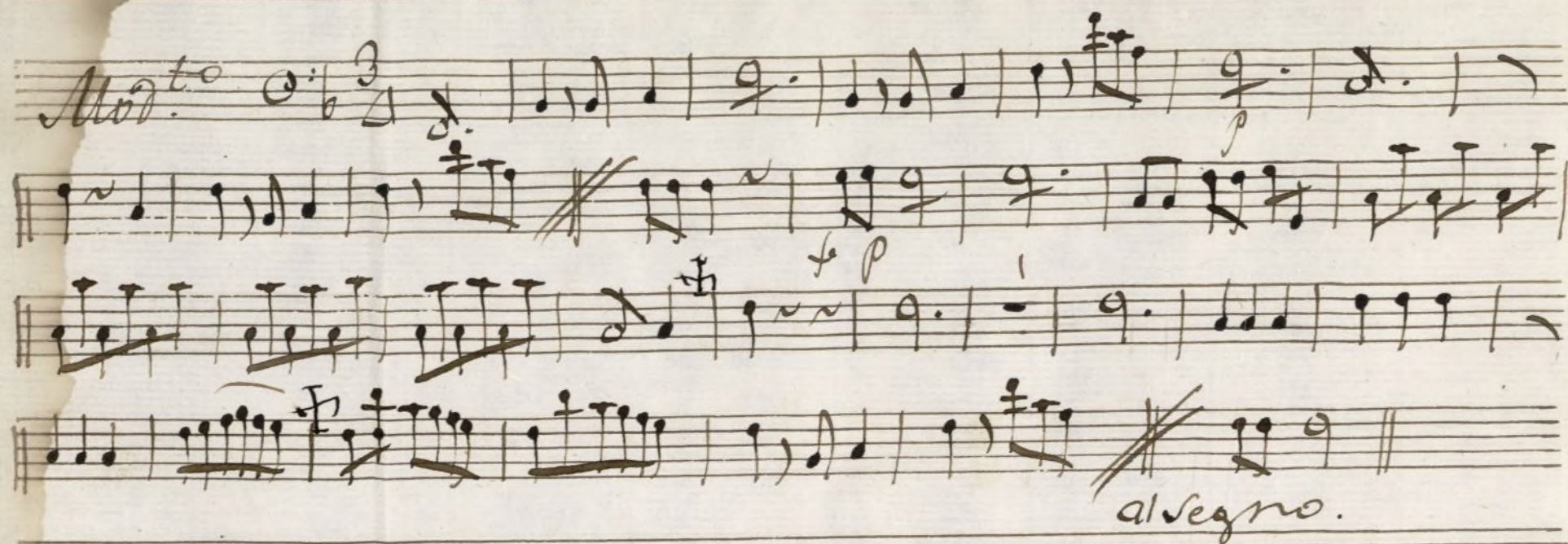
Bajo Ton<sup>a</sup> a solo la maja enfadada.













Ayuntamiento de Madrid