

Leg. 2^o. N.º 12.

MUS 85-16

(Leg. 5^o. n.º 36)

t

1778

Conadilla

A solo

La buena pesca

36

Sra. Carmen.

de Ponates

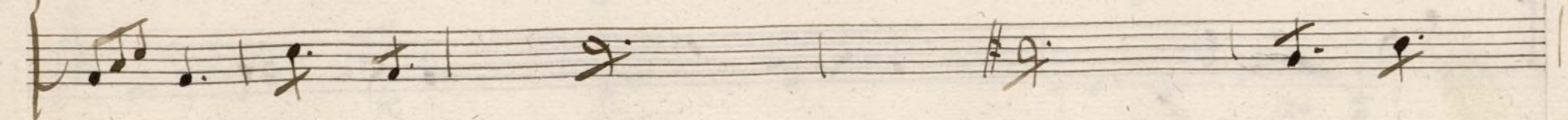
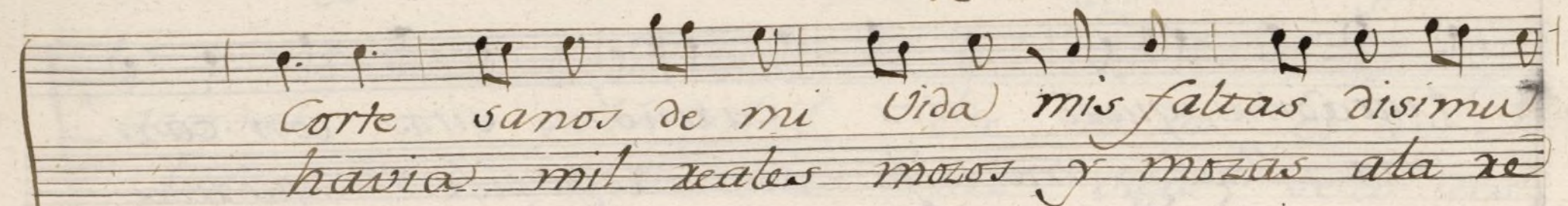
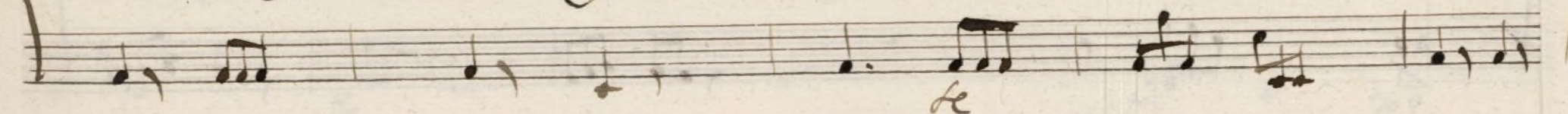
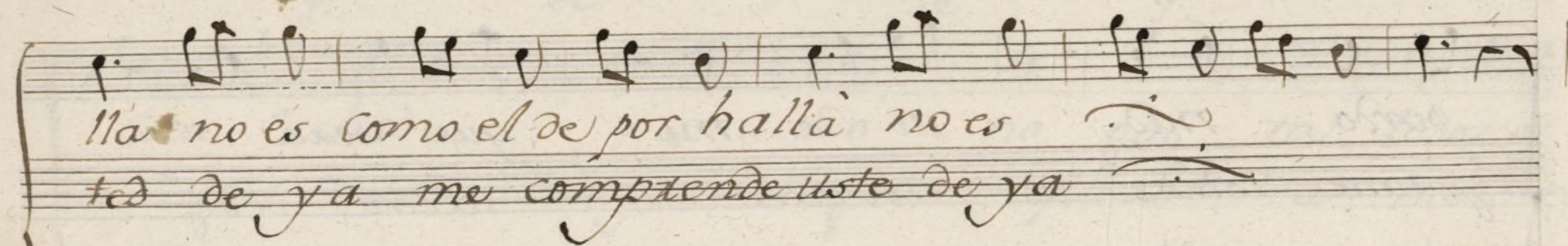
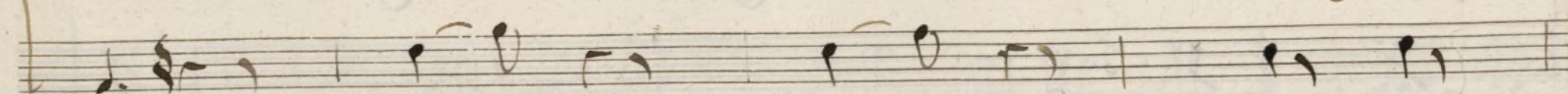
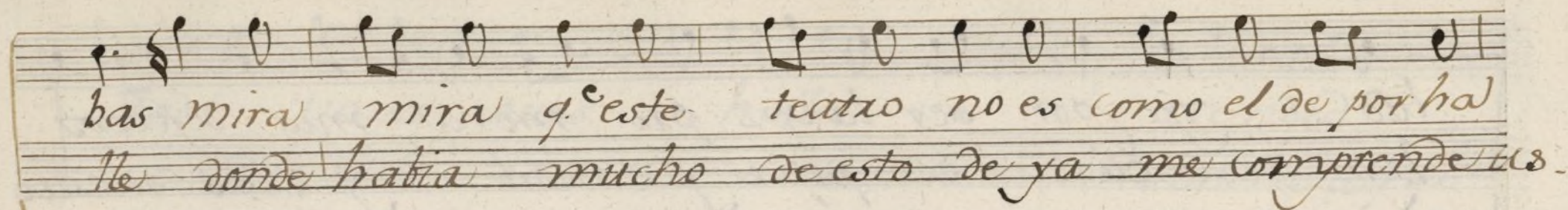
Ayuntamiento de Madrid

85-16

All.^o

Pobre zita Maxi-
La otra noche queri

quita dime dime donde bas dime dime donde
ditos en una casa me halle en una casa me ha



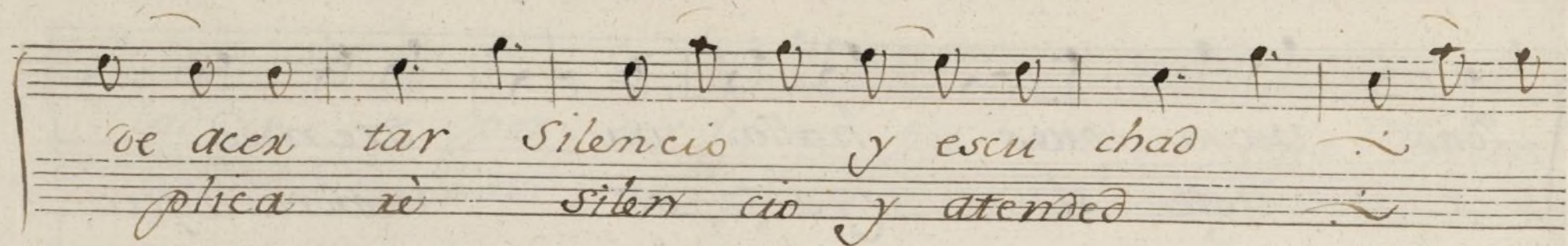
lad y por ser la vez pu mera mis defectos
ley ellos de pipa y candil y ellas de escu
perdo nãd ai de mi que serã
pame usted atended atem ded
tratadme quexi ditos cauiño sitos con cari
una llego y me difo con regocijo querida

Handwritten musical score on aged paper, featuring six systems of music. Each system consists of a vocal line with lyrics and a piano accompaniment line. The lyrics are in Spanish. The notation includes various musical symbols such as notes, rests, and dynamic markings like *p.* and *se*.

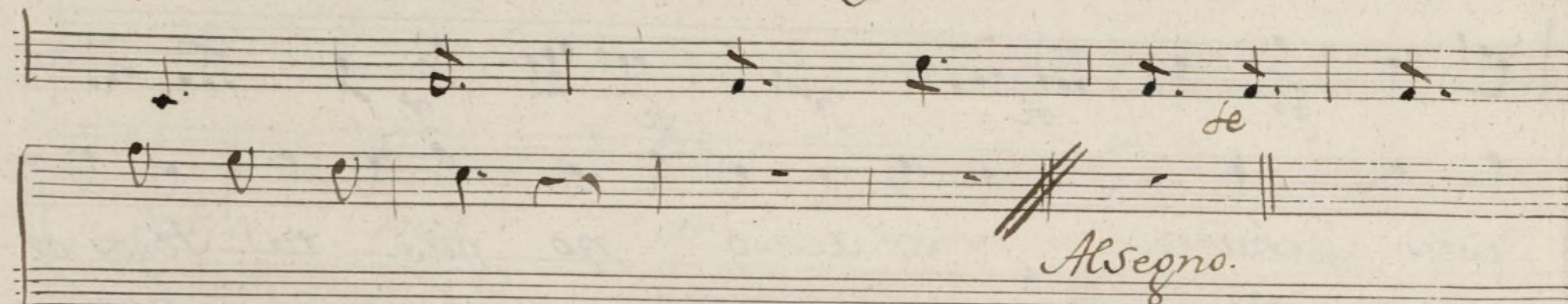
dad *vaya* *pues* *halla* *va* *atended*
e *uste* *si* *ya se ve* *vendra aqui*

Escu *chad* *y si acaso* *no* *gus* *ta* *todos* *os*
digo *pues* *yo la digo* *queri* *da* *hablenme*

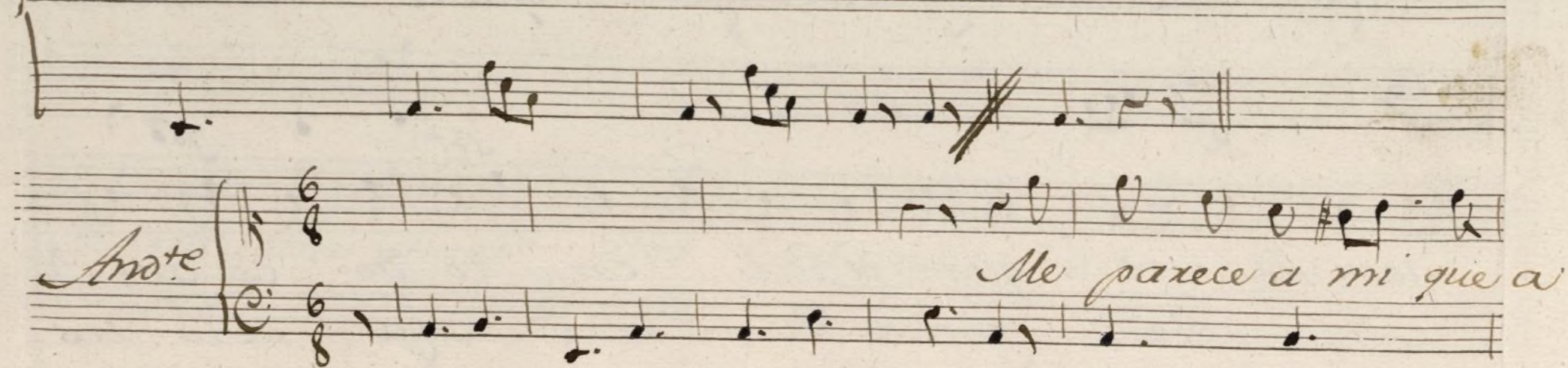
acordad *quan* *dificil* *en* *to* *do* *es* *aver*
claro *uste* *y ella dice* *pues* *oiga* *se lo* *res-*



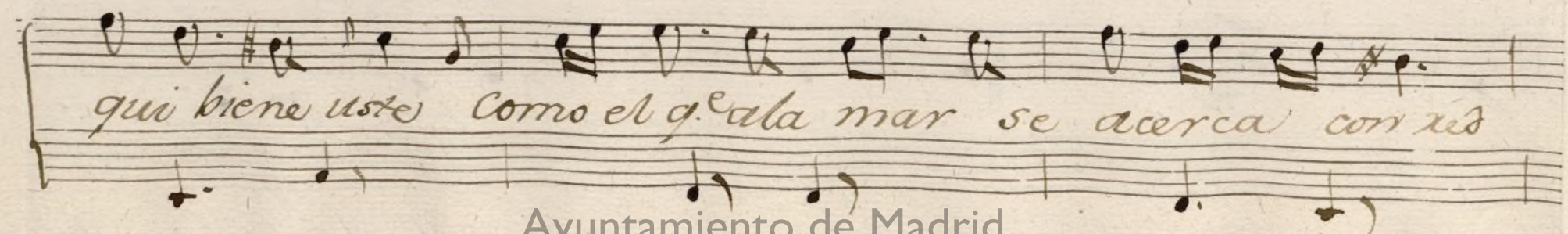
ve acerc tar Silencio y escu chad
plica re silen cio y atended



de
Allegro.

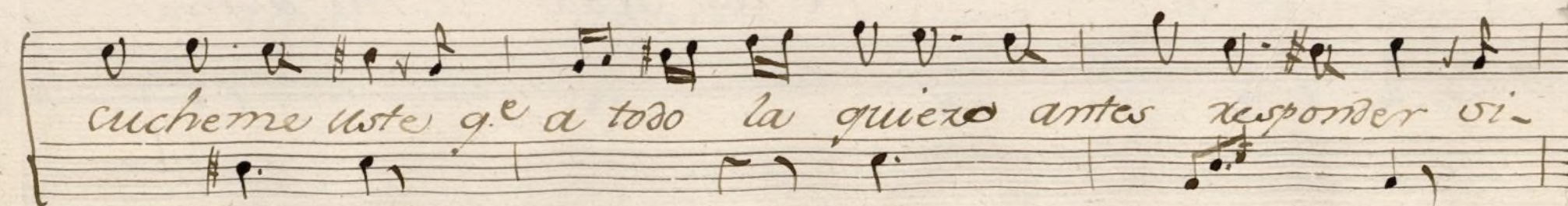
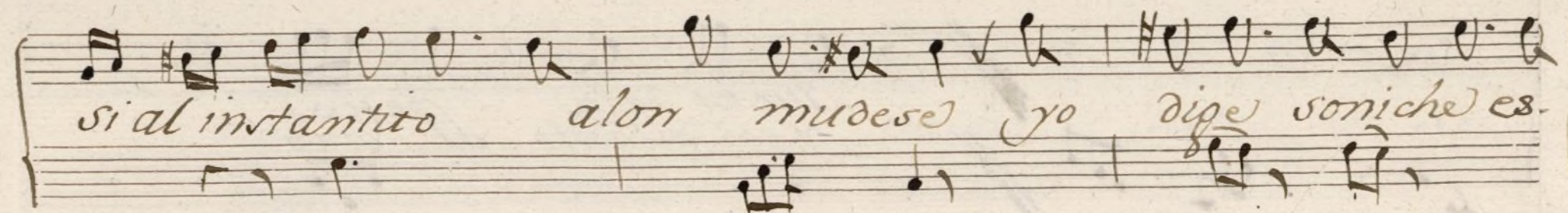
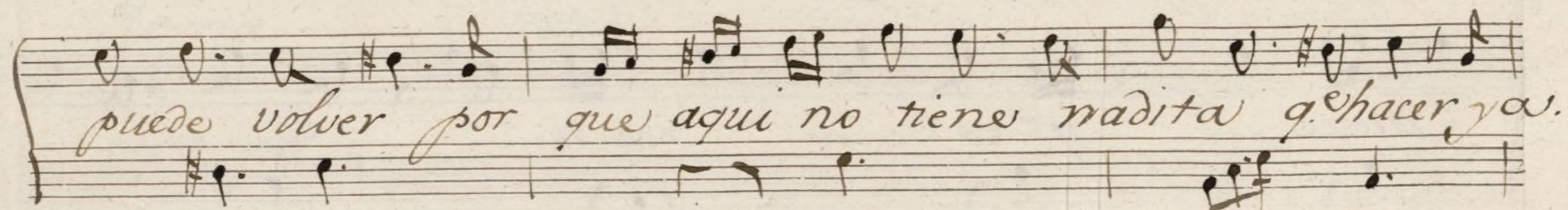
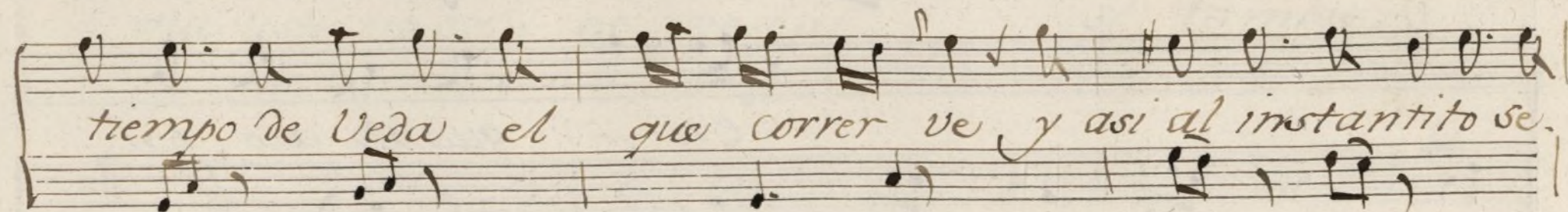
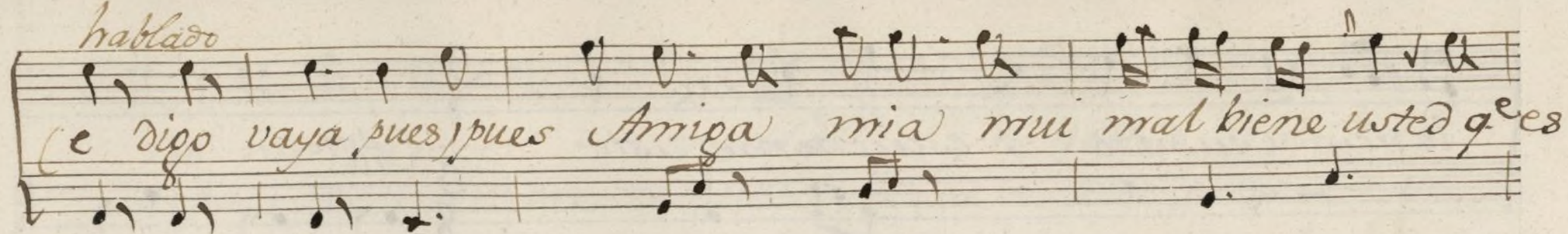


Andante Me parece a mi que a



qui viene usted como el g.º ala mar se acerca con us

hablado



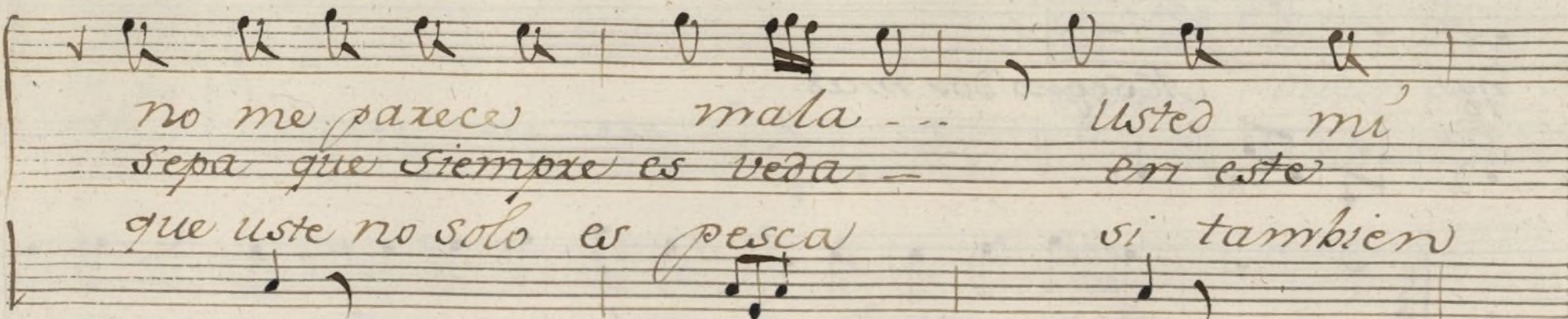
lencio cuidado y escucharme uste.

All.to

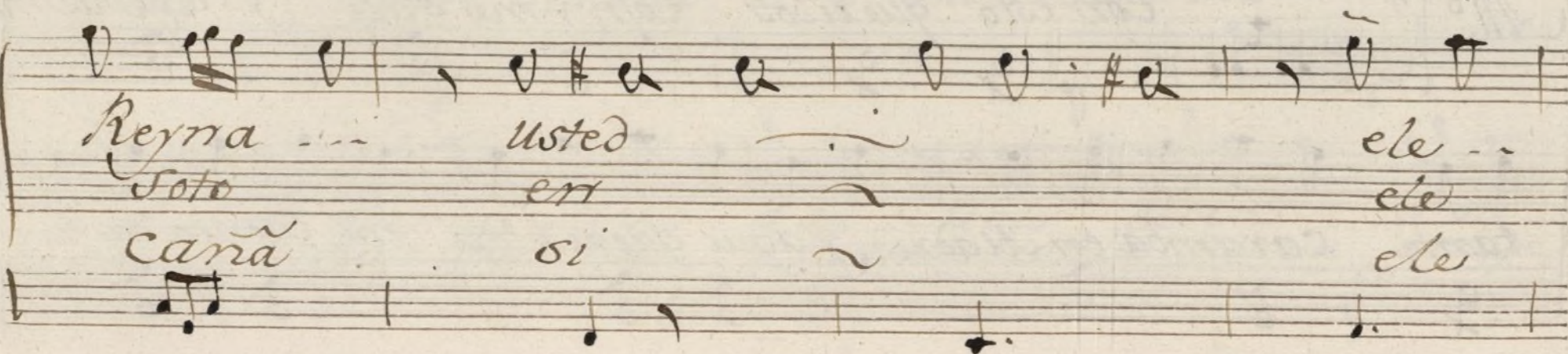
en - quanto alo pu-

mexo - - q.e es dela pesca - - q.e es

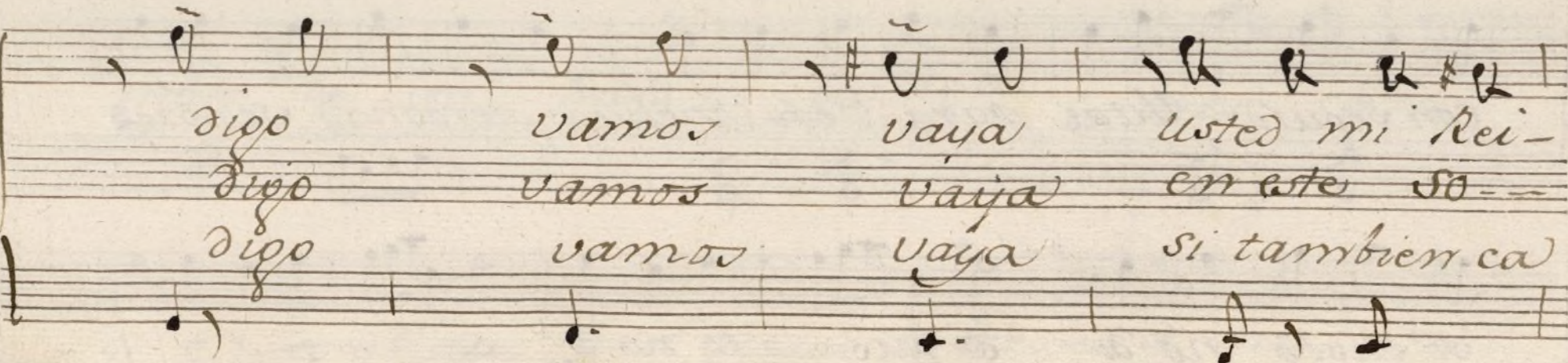
que es dela pesca
y en quanto al otro - -
Y asi agux mi alma



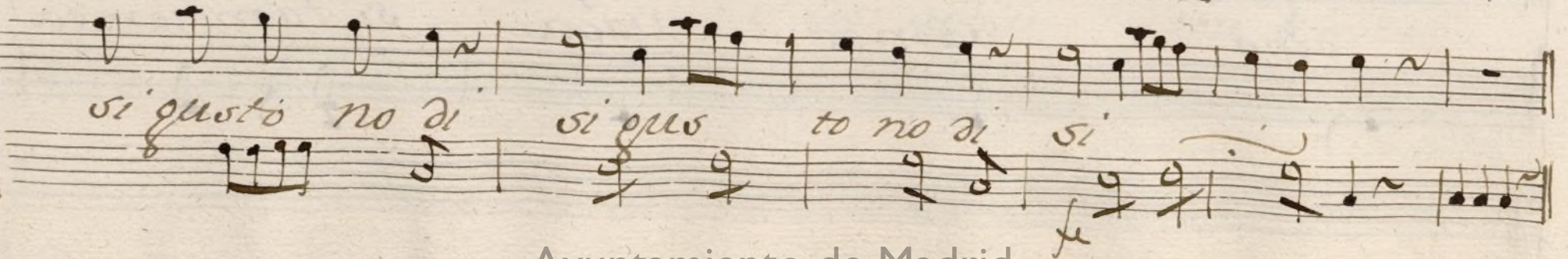
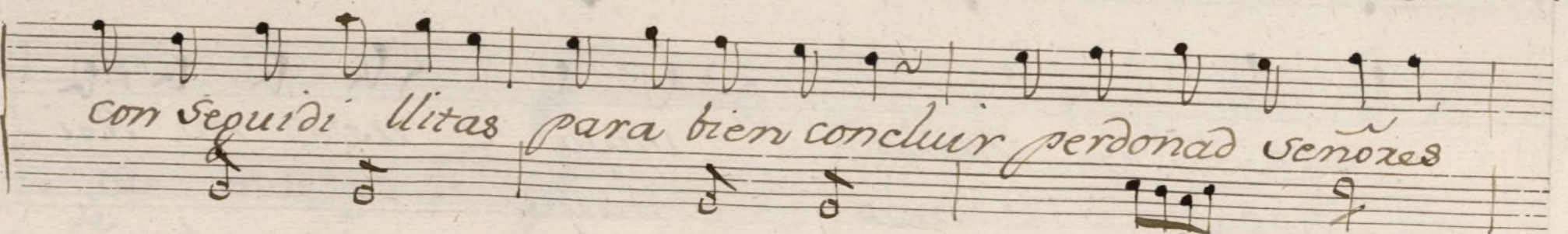
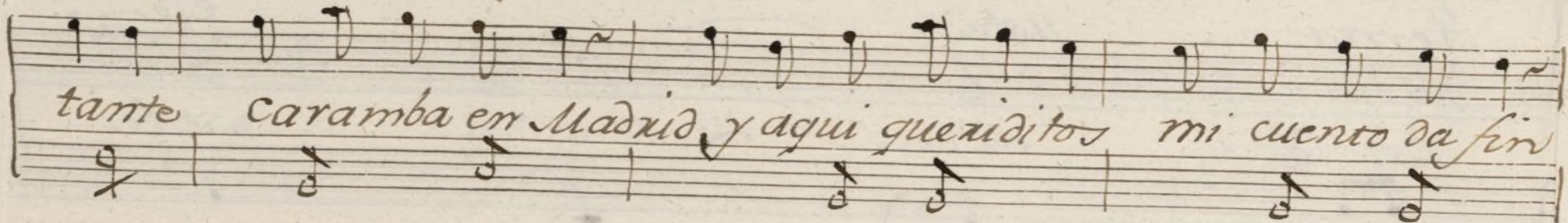
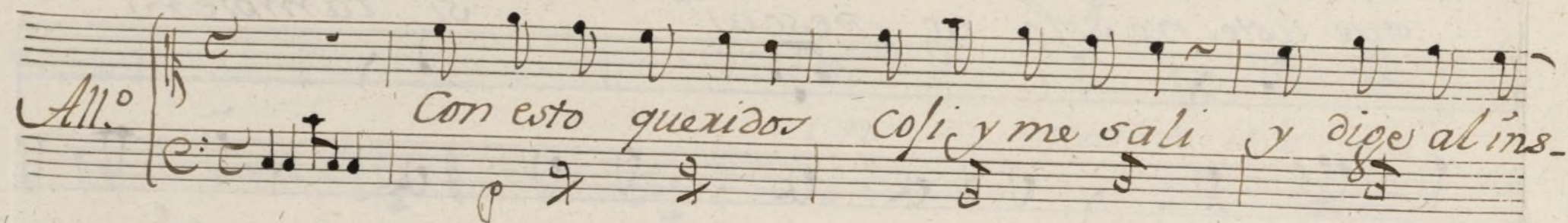
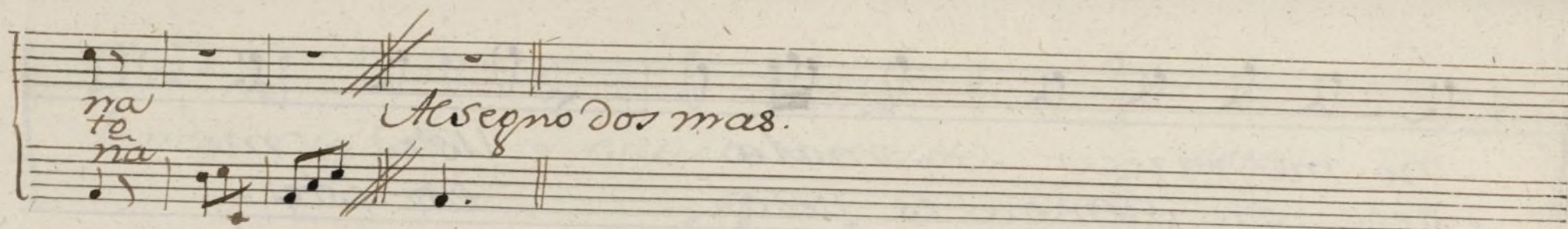
no me parece mala ... usted mi
 sepa que siempre es veda en este
 que usted no solo es pesca si tambien



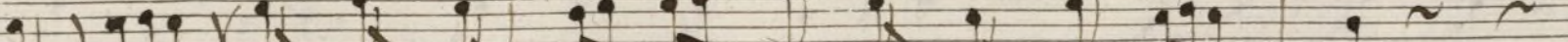
Reyna ... usted ele ...
 Solo en ele
 Caña si ele



digo vamos vaya usted mi Rei-
 digo vamos vaya en este so--
 digo vamos vaya si tambien ca



Handwritten musical score for a piece titled "Allegro". The score is written on two staves, treble and bass clef, with a key signature of one sharp (F#) and a time signature of 3/4. The tempo marking "Allegro" is written in the left margin. The music consists of a series of eighth and sixteenth notes, with some rests. The piece ends with a double bar line.

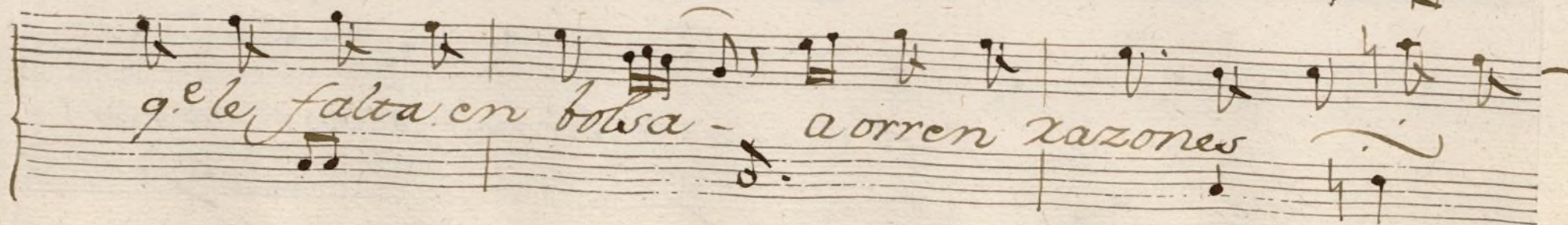
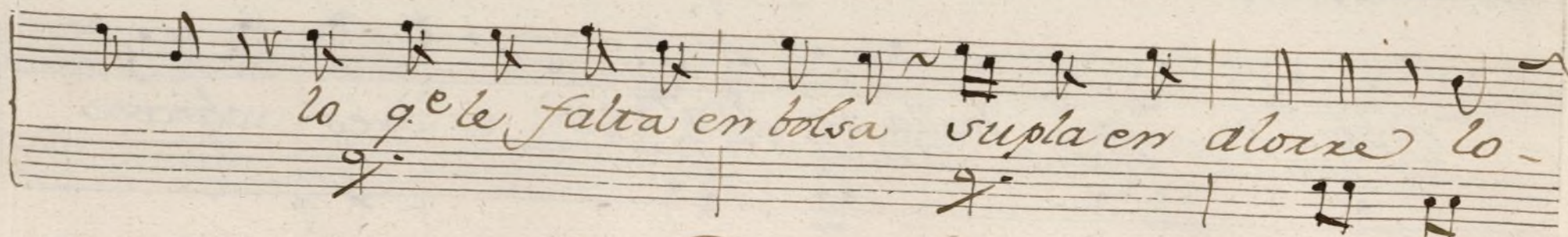
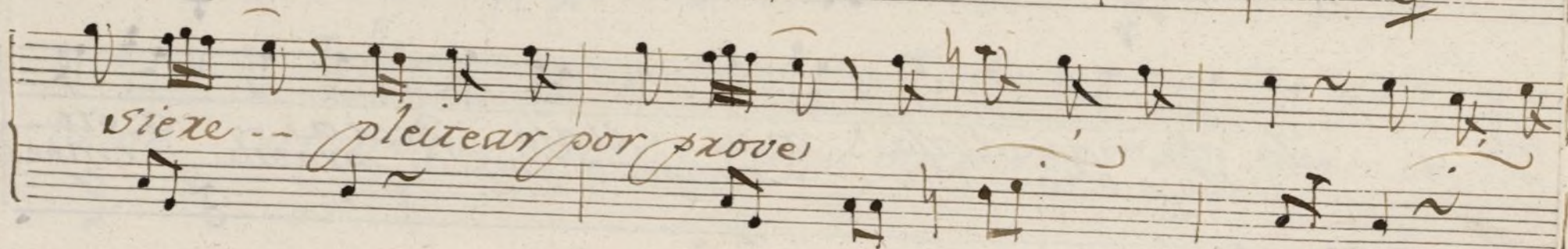
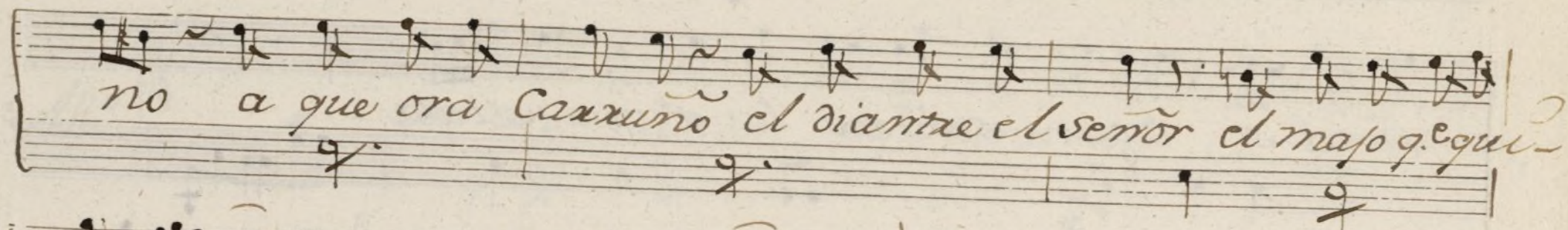
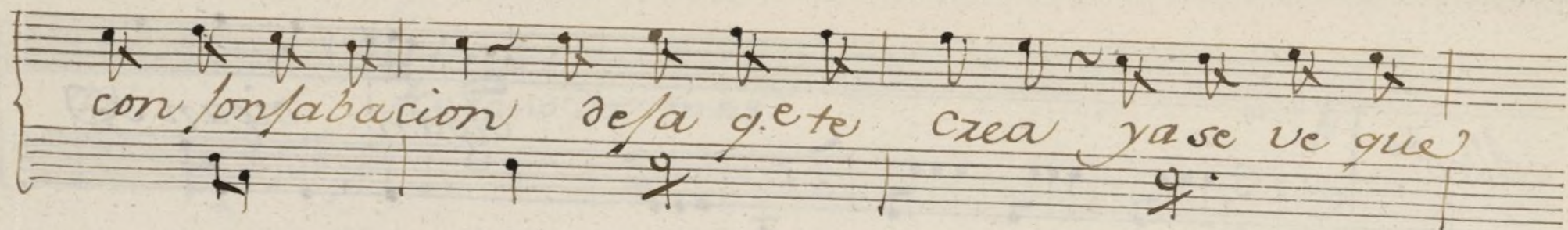


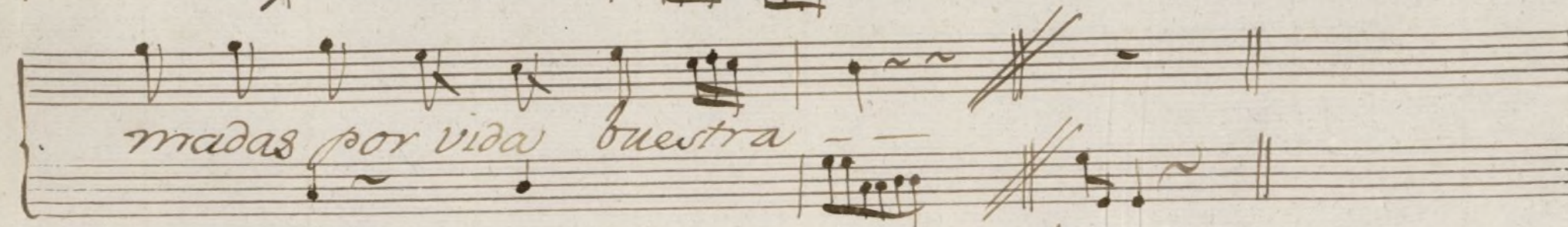
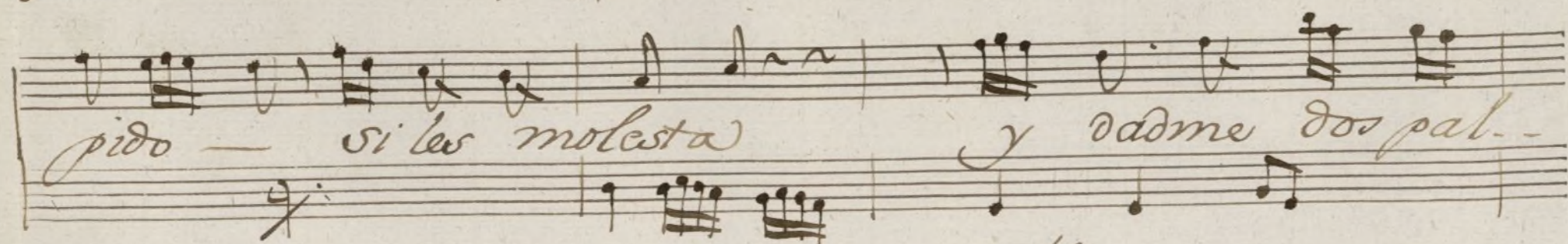
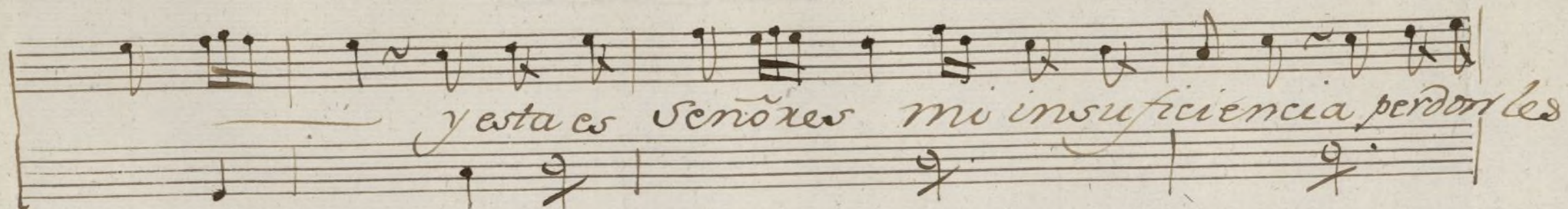
 ñoxes si organ señores lo q'vna Mafa --

Lo geoma Mafu a su Mafu decia a su-
Volvio otro dia y empezo con la propia y empe-

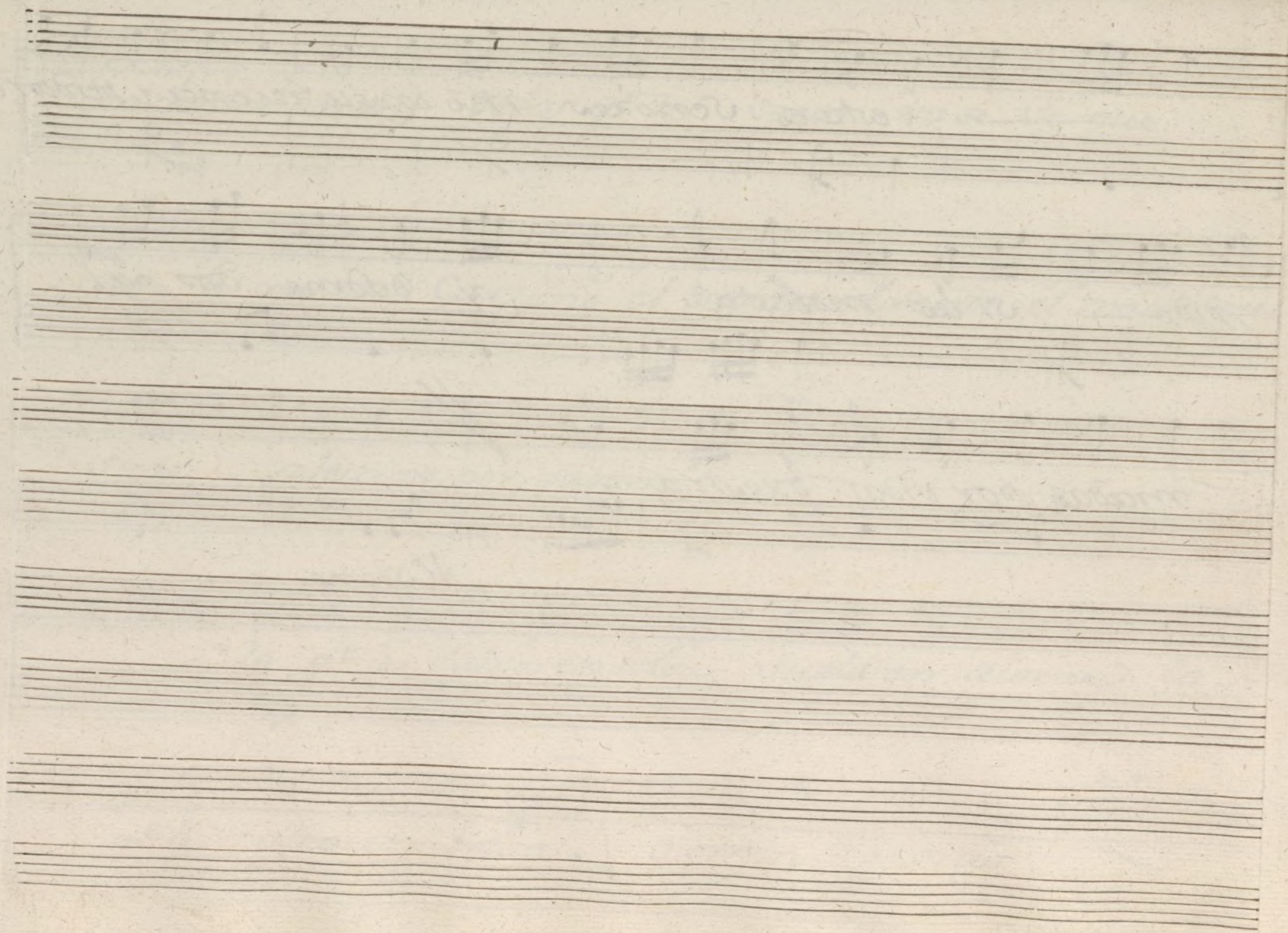
mafo de cia halla en Matapa
zo con la propia al cantina - oyes chico

Di c: a g.^e ora faxol (axor) te bienes a mi candil





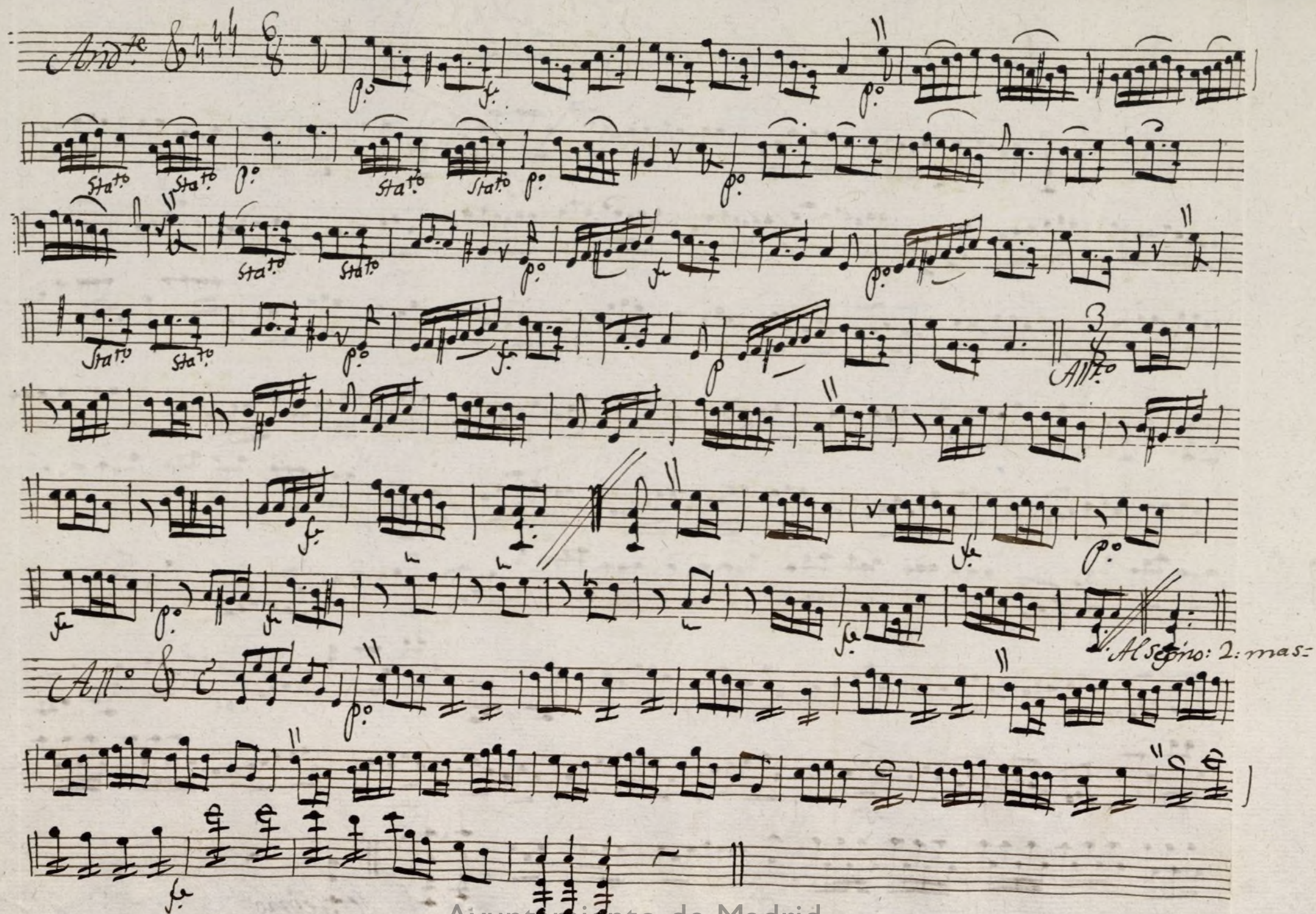
Allegro



Violin 1.º Ton.º a solo de la buena Pesca

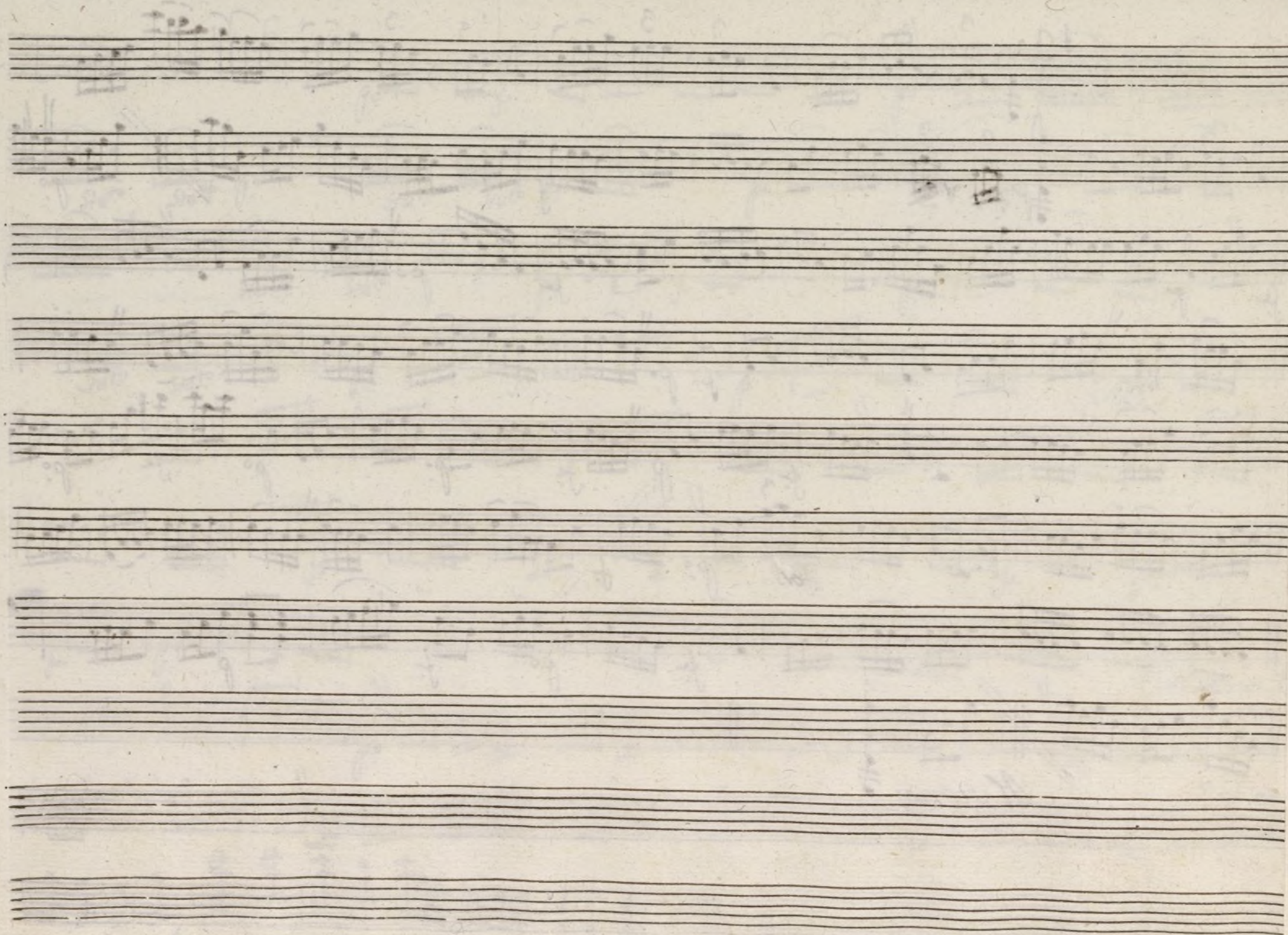
Handwritten musical score for Violin 1.º, titled "Ton.º a solo de la buena Pesca". The score is written on ten staves in a single system. It begins with a treble clef, a key signature of one sharp (F#), and a 6/8 time signature. The music is characterized by rapid sixteenth-note passages, often beamed in groups of four or six. Dynamic markings include "p." (piano) and "sfz." (sforzando). The piece concludes with a double bar line and a repeat sign. The notation is in a cursive, handwritten style typical of 18th or 19th-century manuscripts.

Al Segno:

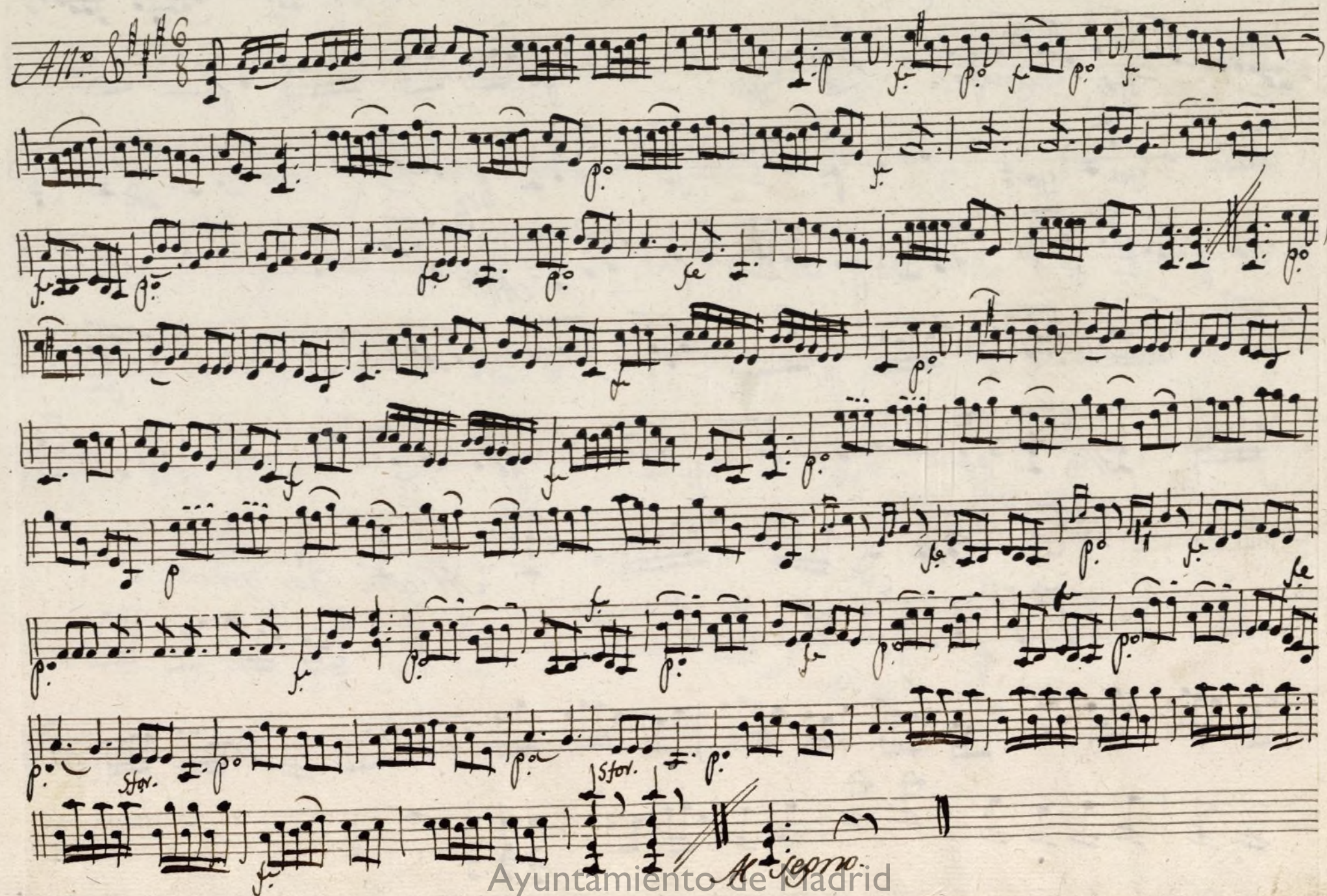


All.^o

Al Segno:



Ayuntamiento de Madrid

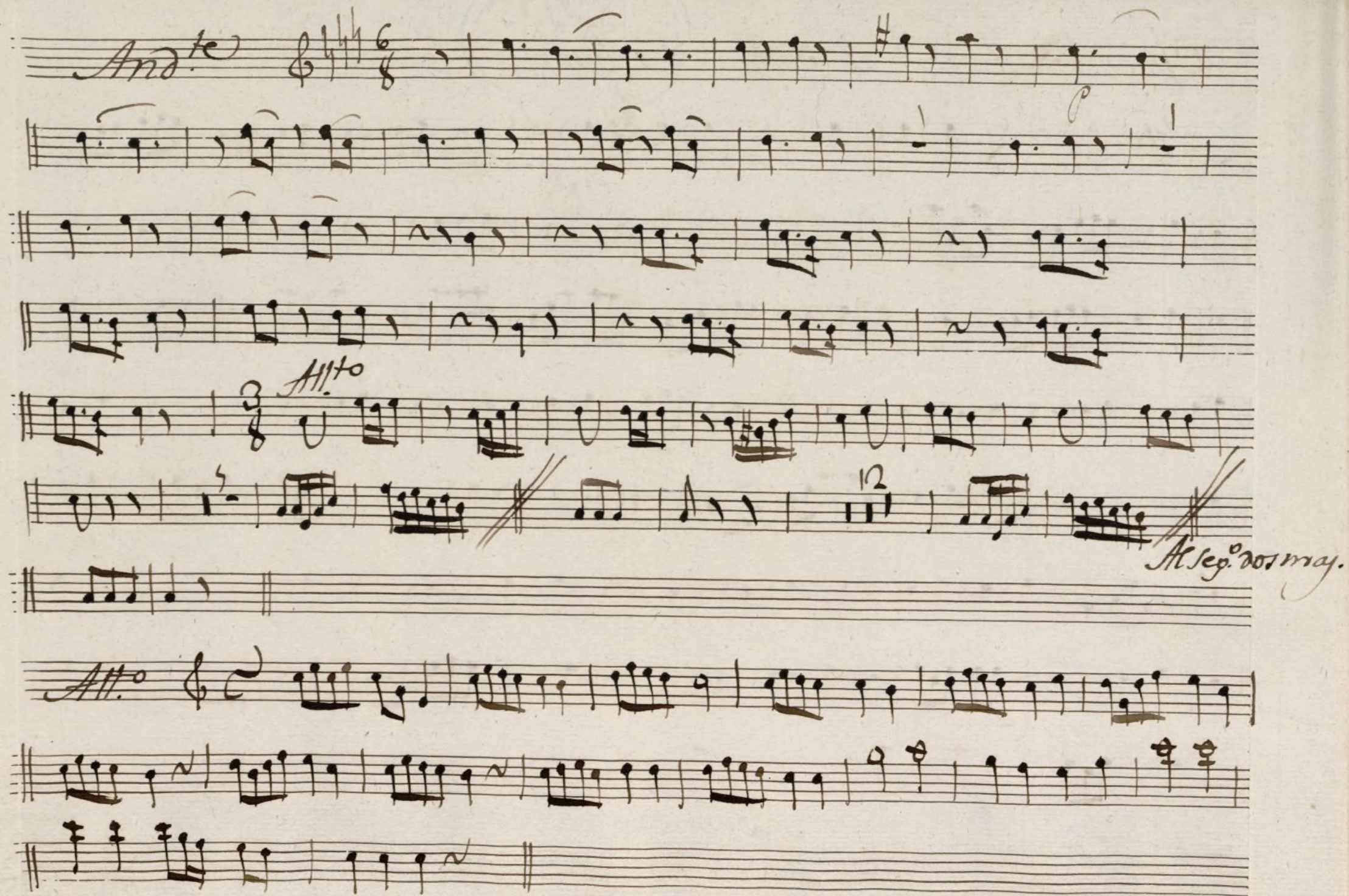
Violin 2.^o Lon.^a a solo, de la buena Pesca

Handwritten musical score on ten staves. The notation includes treble and bass clefs, a key signature of one sharp (F#), and a 3/4 time signature. The music features complex rhythmic patterns, including triplets and sixteenth notes. A double bar line with a repeat sign is present on the third staff. The word *Allegro* is written in cursive below the eighth staff. The score concludes with a double bar line and a repeat sign on the ninth staff.

Ayuntamiento de Madrid

Oboe 1.^o Ton.^a a Solo La buena Pesca.

Handwritten musical score for Oboe 1. The score is written on ten staves. The key signature is one sharp (F#) and the time signature is 6/8. The music is in the key of D major (F# and C#) and is in 6/8 time. The tempo is marked 'Allegro' at the end of the piece. The score includes various musical notations such as notes, rests, and dynamic markings like 'f' (forte) and 'p' (piano). There are also some markings like '10' and '3' which might indicate fingerings or measures. The piece ends with a double bar line and the word 'Allegro' written below the staff.

And.^{te} 

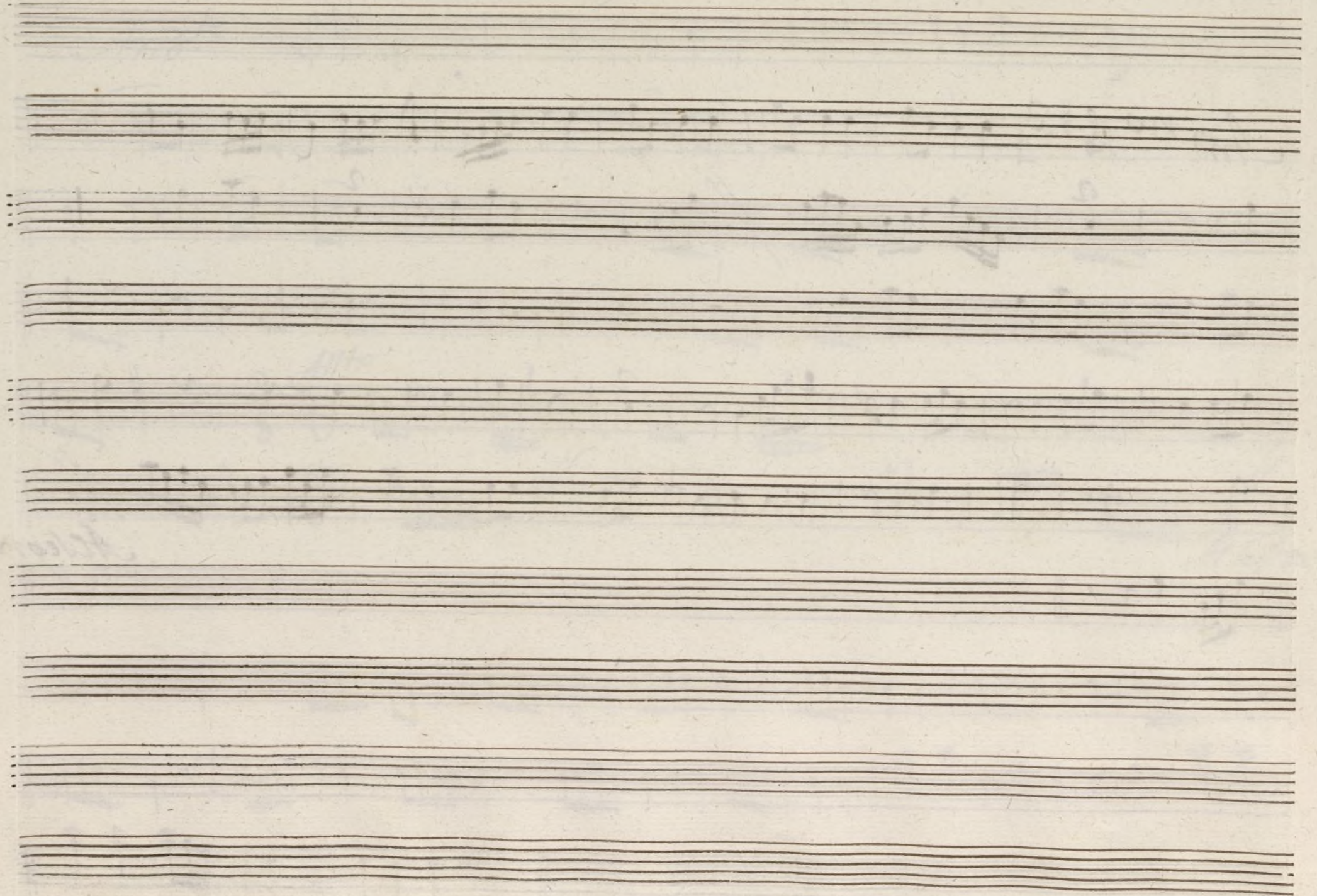
Alto

Al Sep.^o do r may.

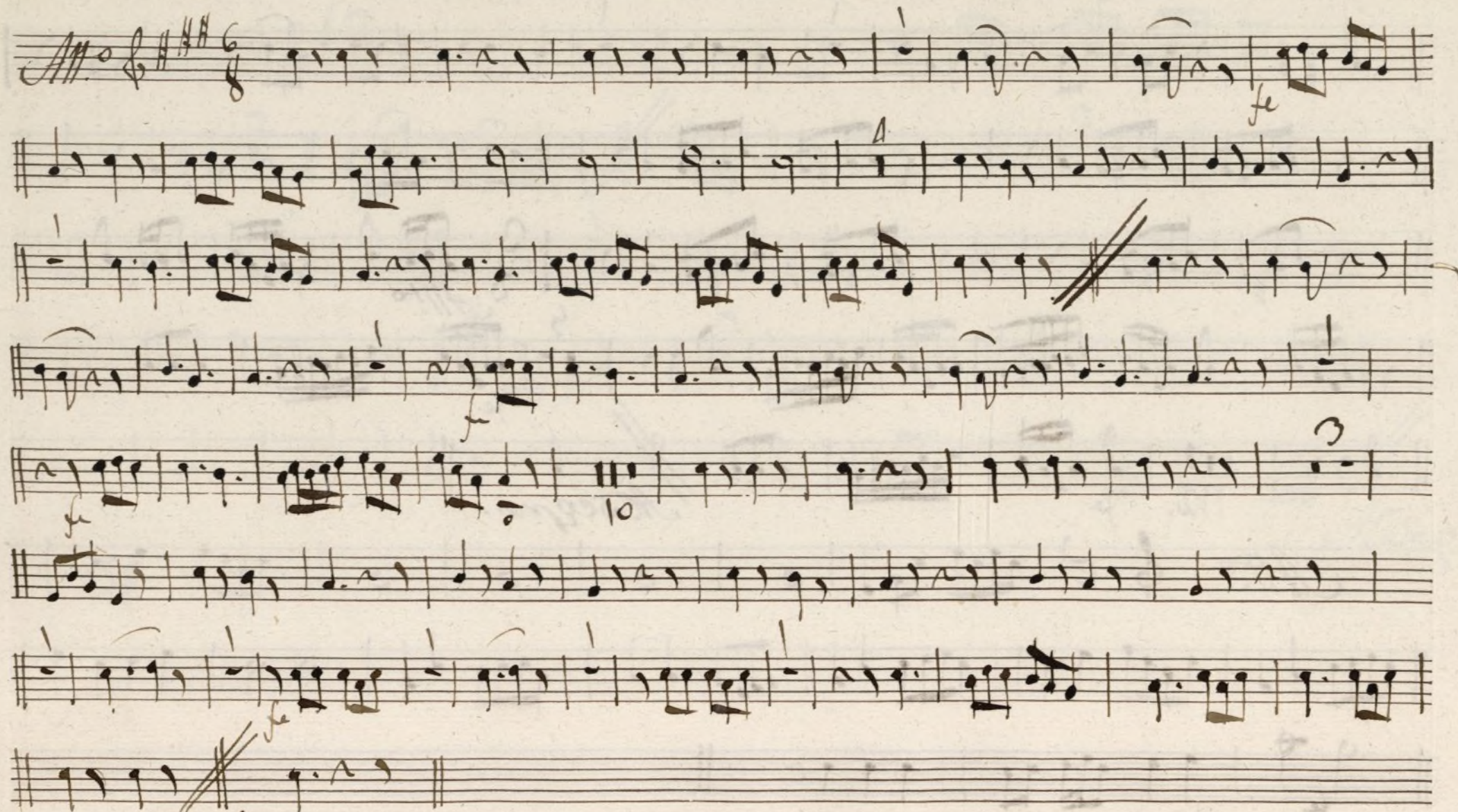
ay.

And no 8 \sharp 3

Allegro



Oboe 2.^o Ton.^a a Solo la buena Pesca.



Al Segno

And. no 3/4 $\text{F}\sharp$

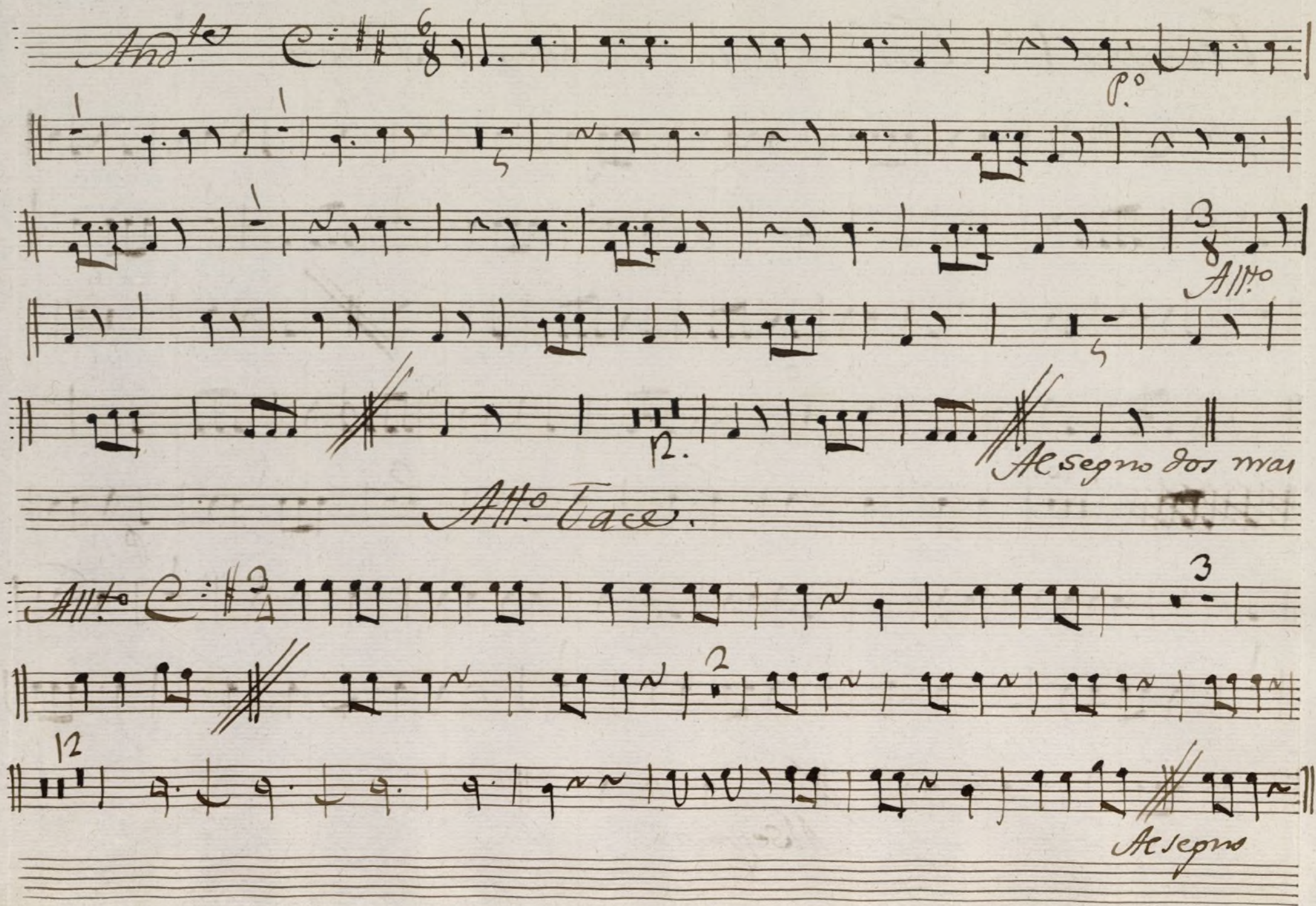
Allegro

Ayuntamiento de Madrid

Trompa 1^a Ton.^a a Solo la buena Pesca.

Allegro

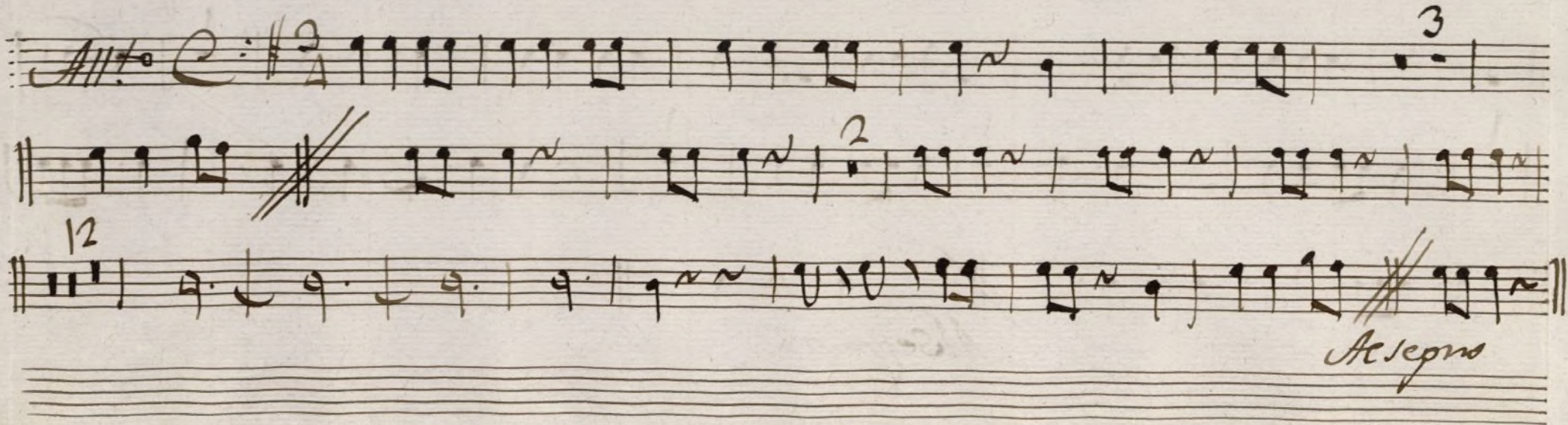
Allegro.

And.^{te} 

All.^{mo}

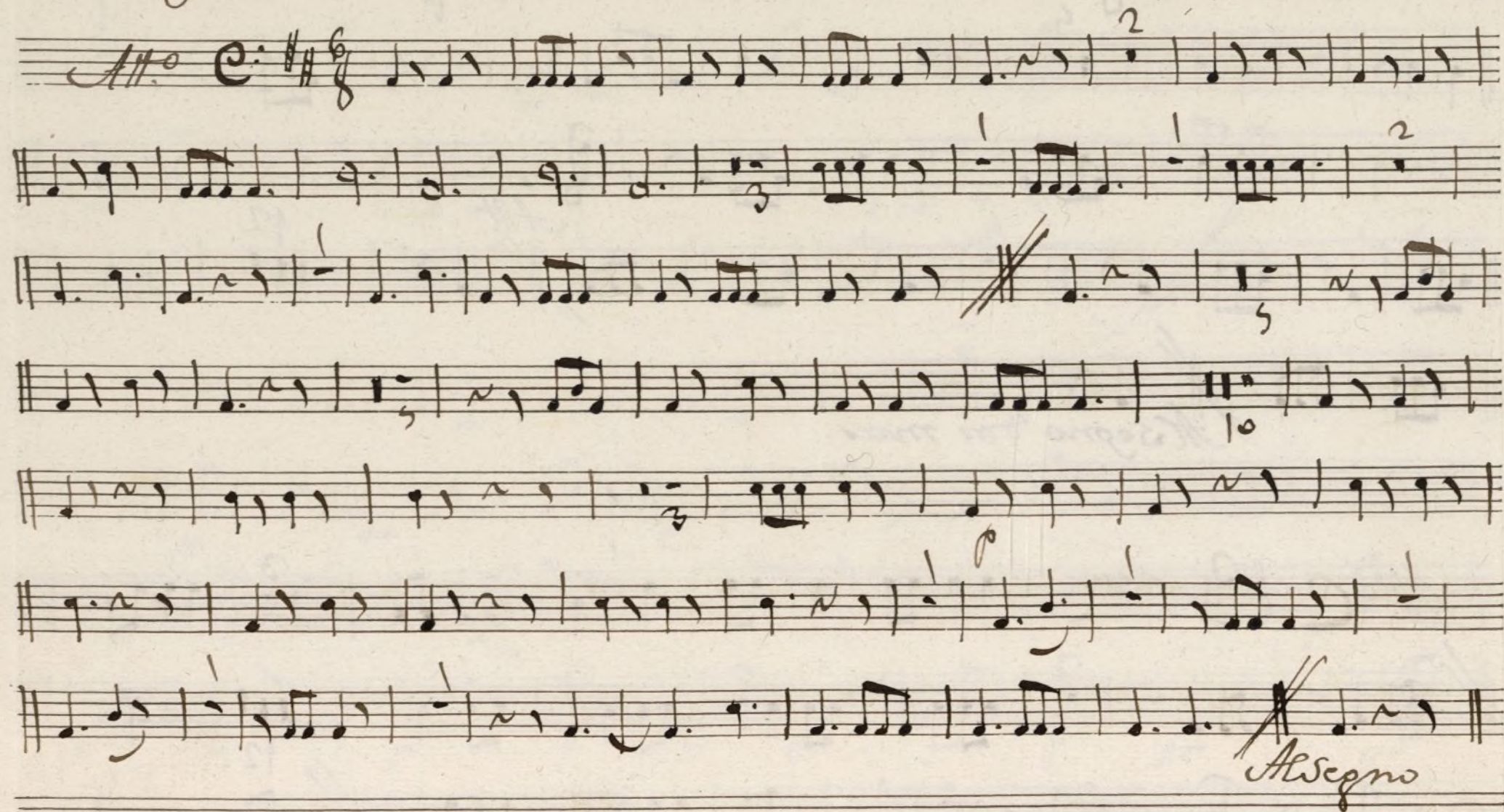
Allegro dos mai

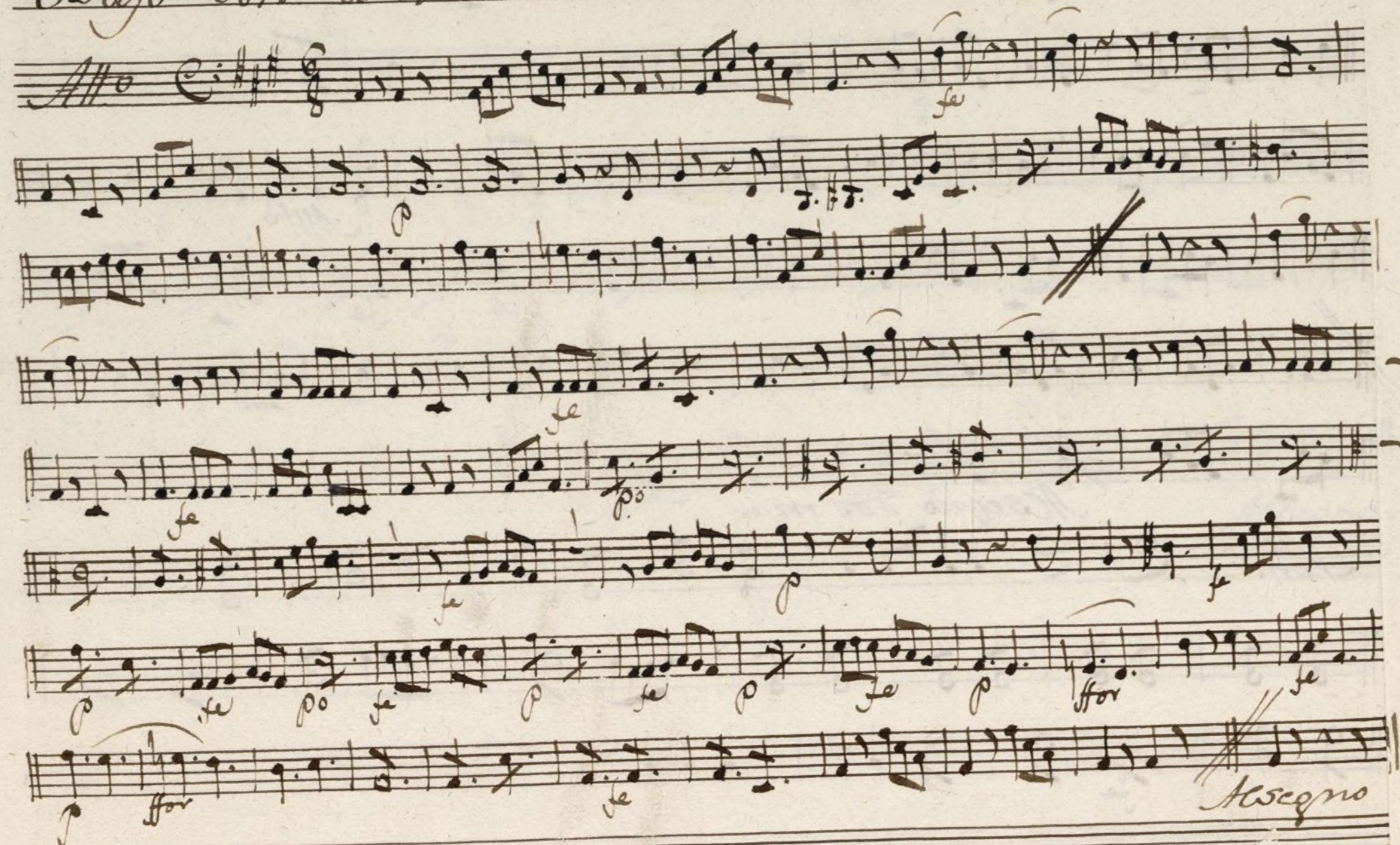
All.^{mo} Tac.

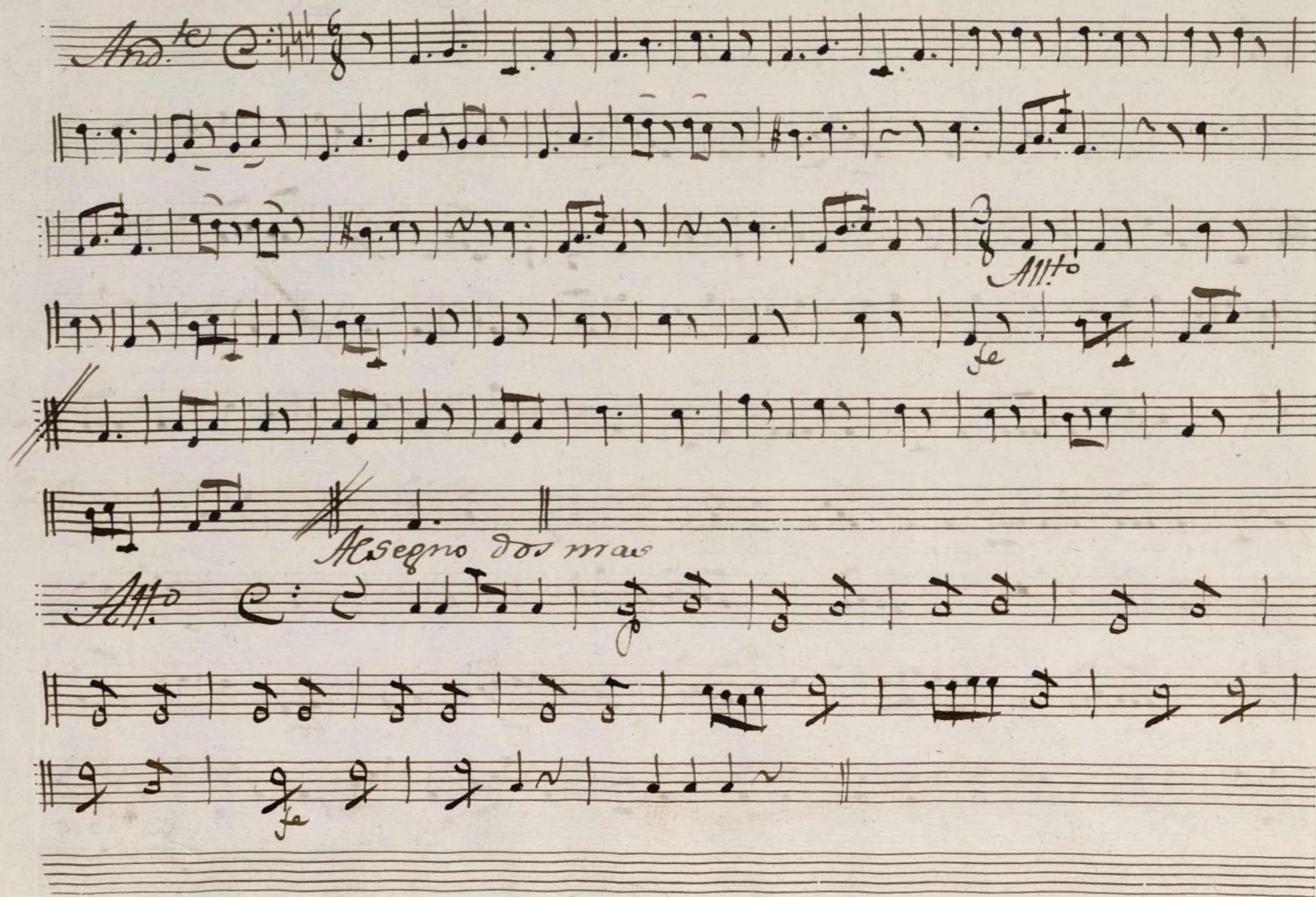
All.^{mo} 

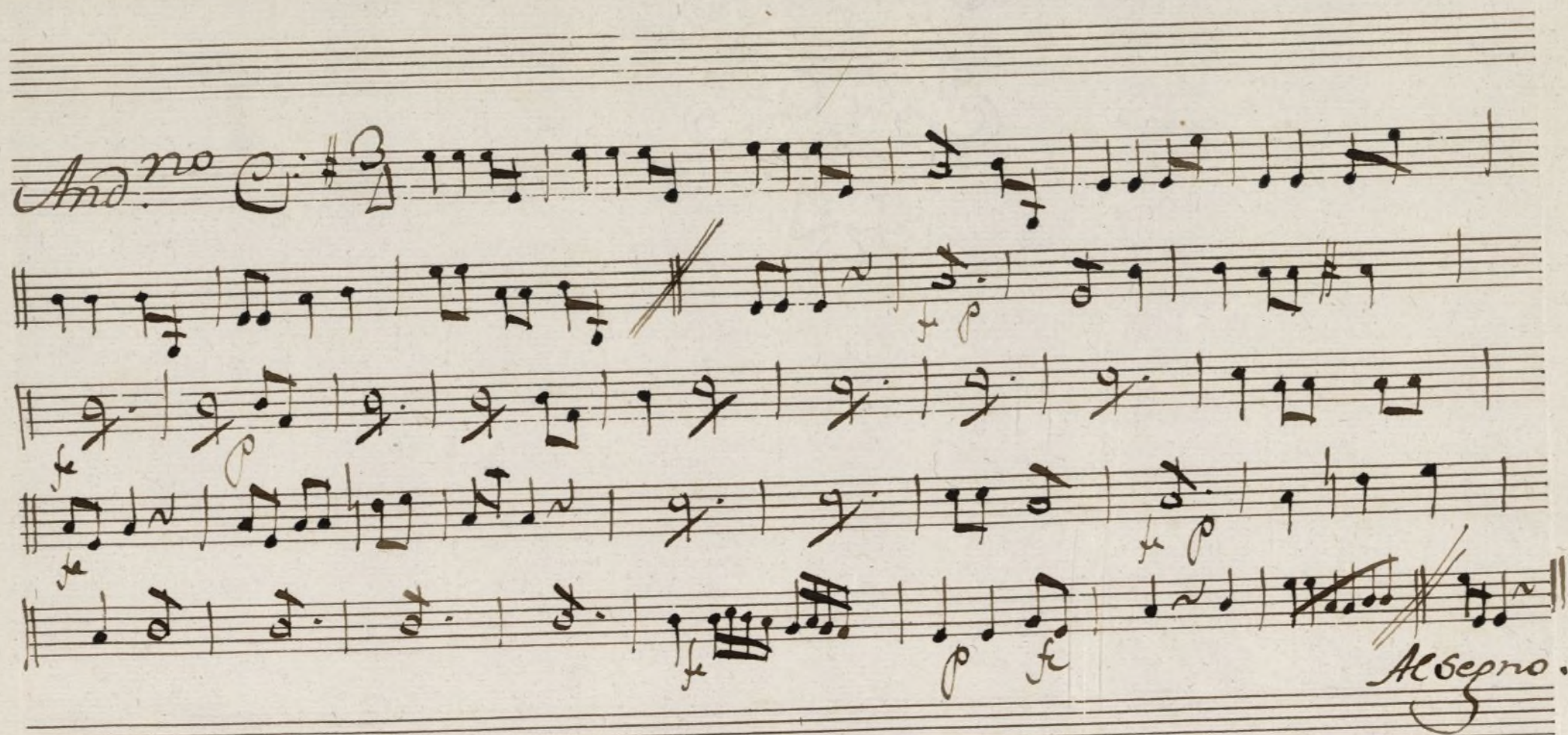
Allegro

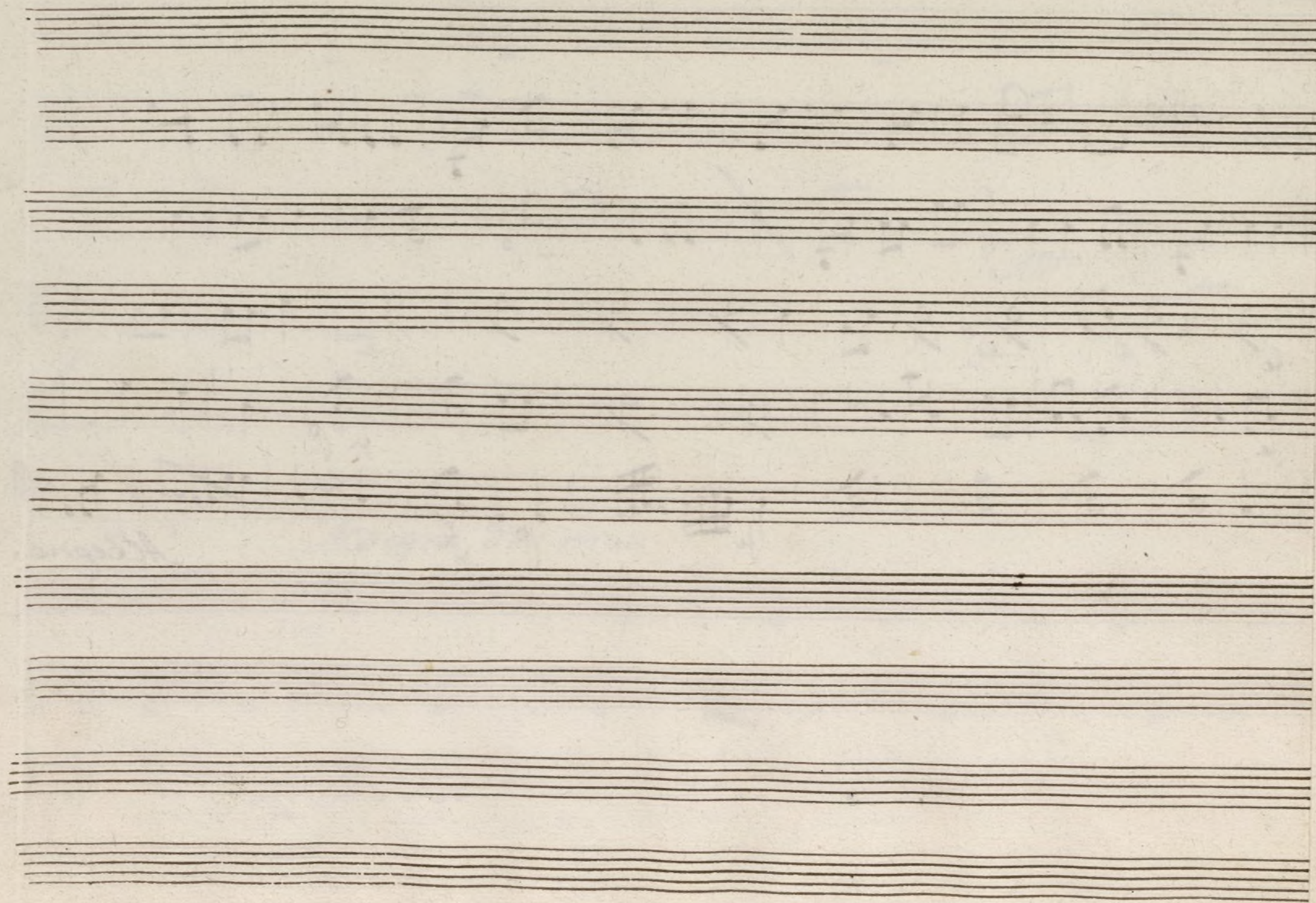
t
Trompa 2.^a Ton.^a a solo vela buena Pesca.



Bafo Ton^a a solo la buena Pesca.

And.^{te} 
Allegro
Allegro dos mas
Allo





Ayuntamiento de Madrid