

+

Tonadilla à Solo

La 5.<sup>a</sup> Segura %

Oigan mi tonadilla, queridos moqueteros

Del S.<sup>t</sup> Marcolini %



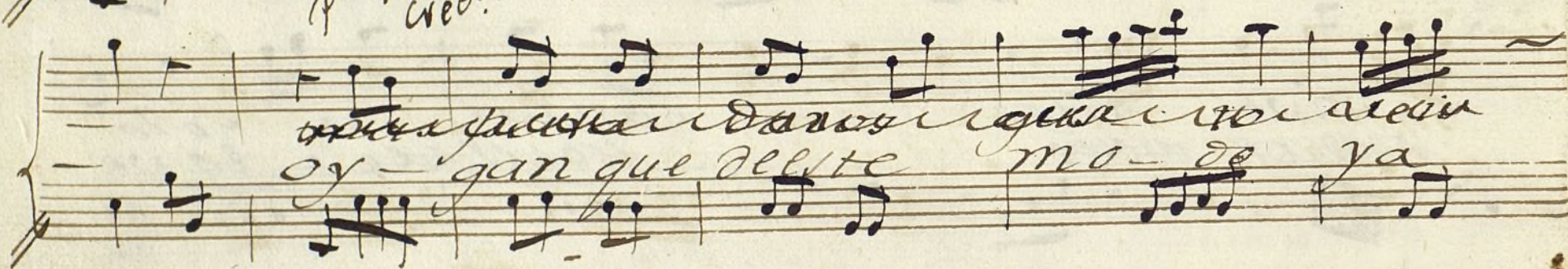
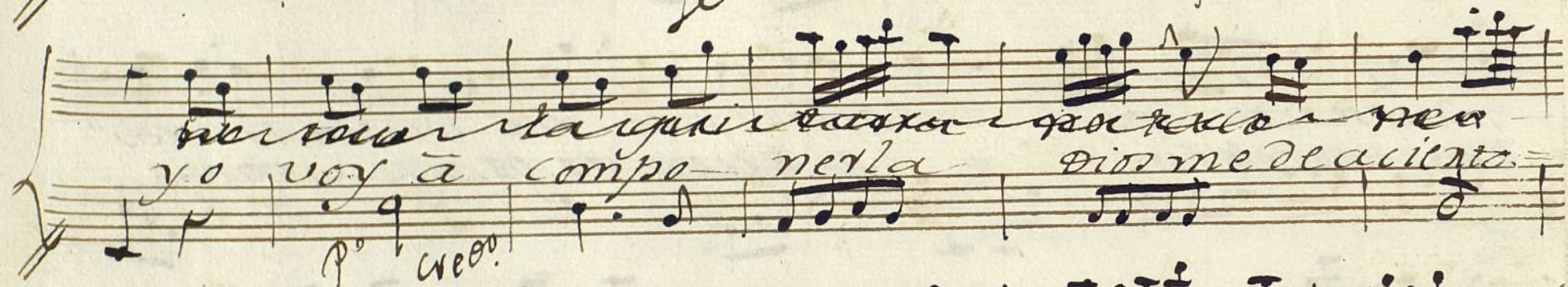
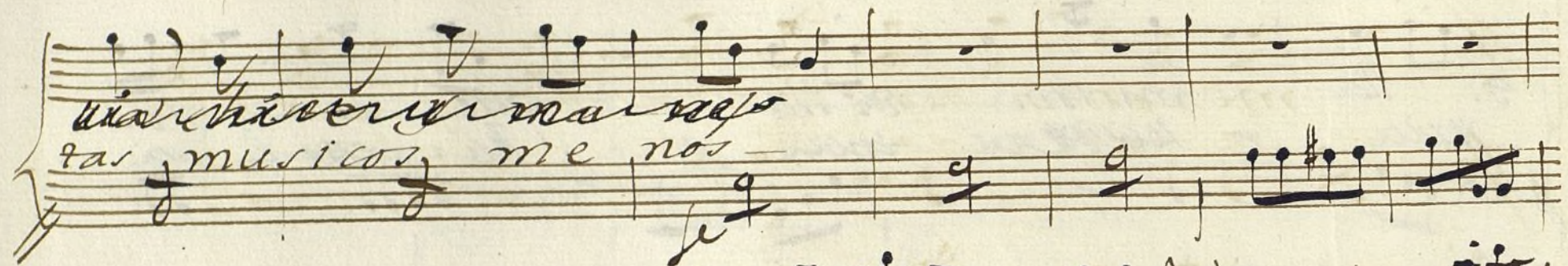
All:



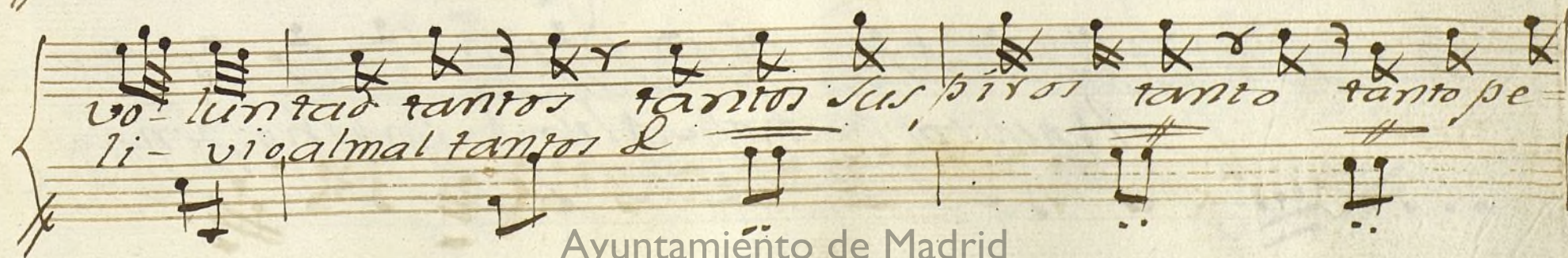
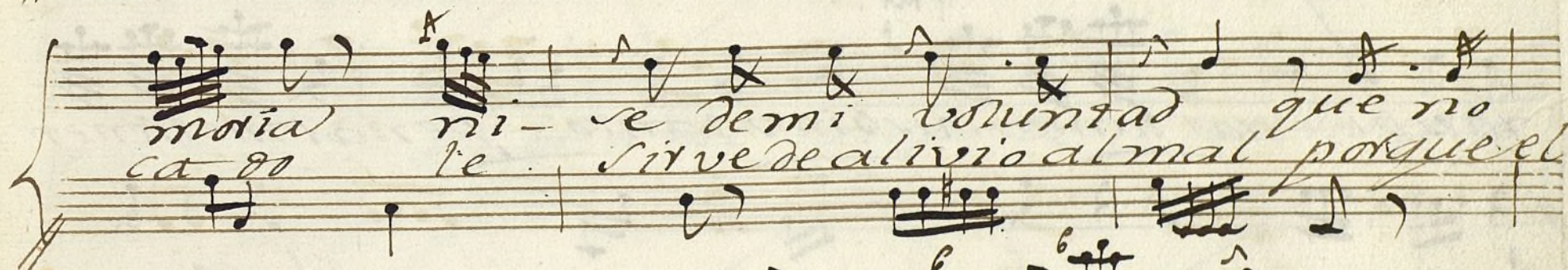
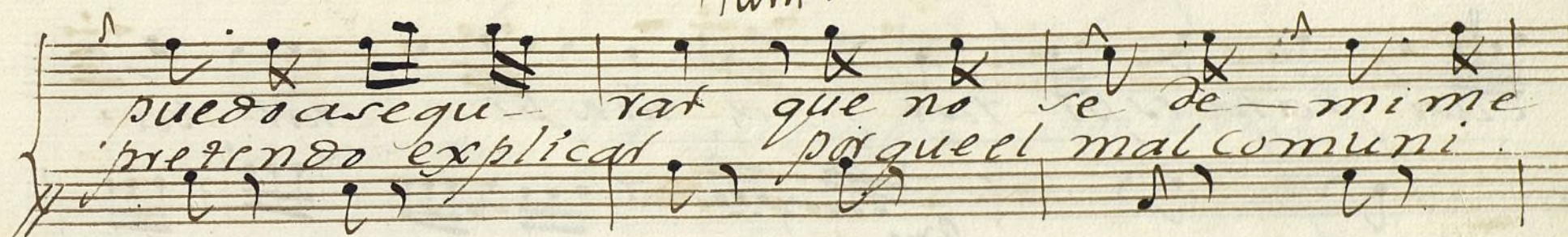
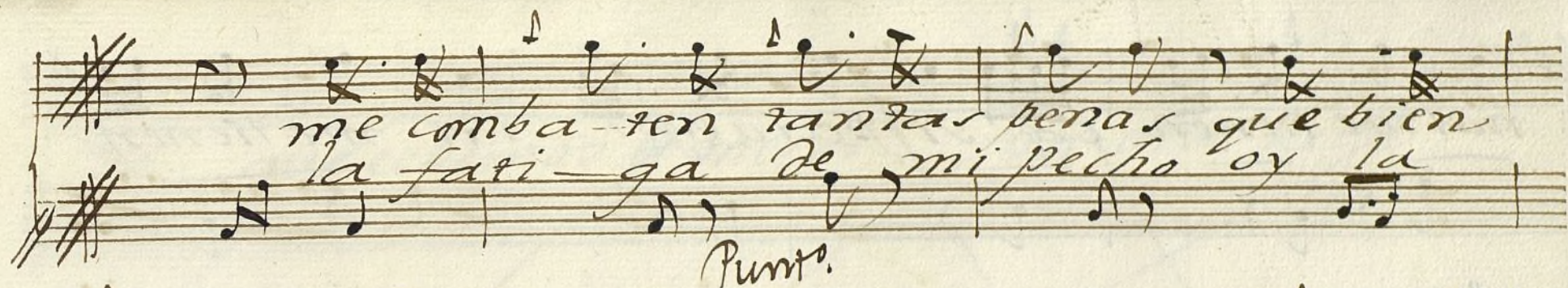














na me tienen ca-si para espi-rar me tienen

ca-si para espi-rar pa-ra espi-rar pa-

ra espi-rar tantos suspiros tanto-pena me tienen

ca-si para espi-rar D.C.

A questo no alio compo no se ppa



que echemos el mejor por otro lado  
mas salga la que salga voi discu-  
niendo y si bien me parece se hire escribiendo  
*Alto*  
dizen en no se  
donde que no ve quando dizen en no se



*All.<sup>o</sup>* *3* *4* *Yavamuí*

*larga la tona - dilla y lo que siento que*

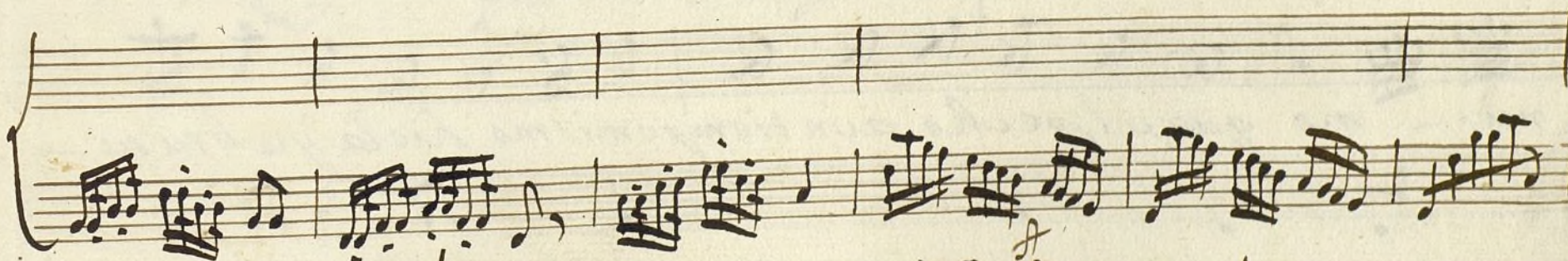
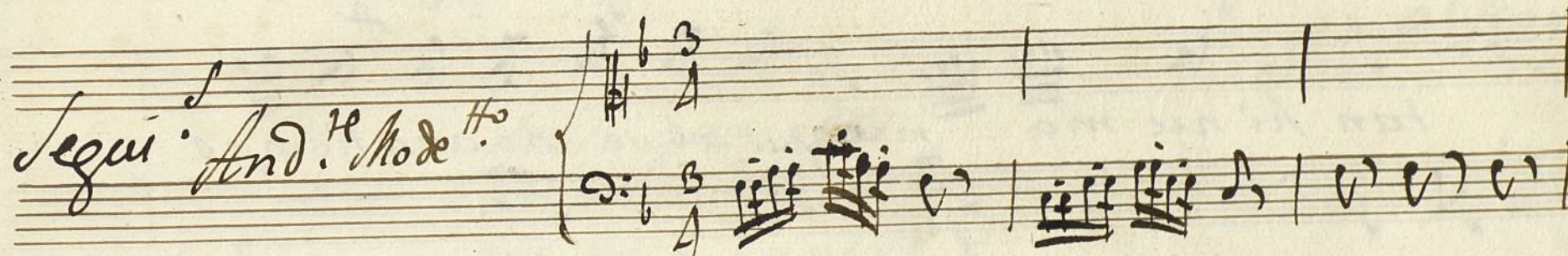
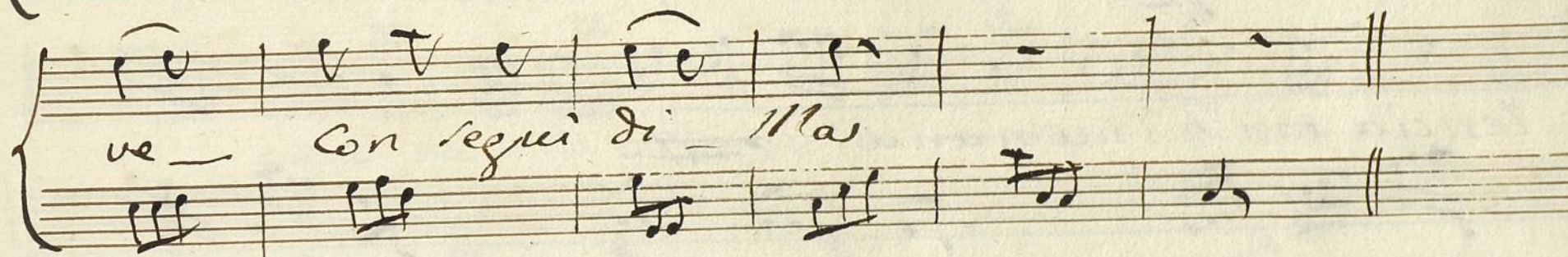
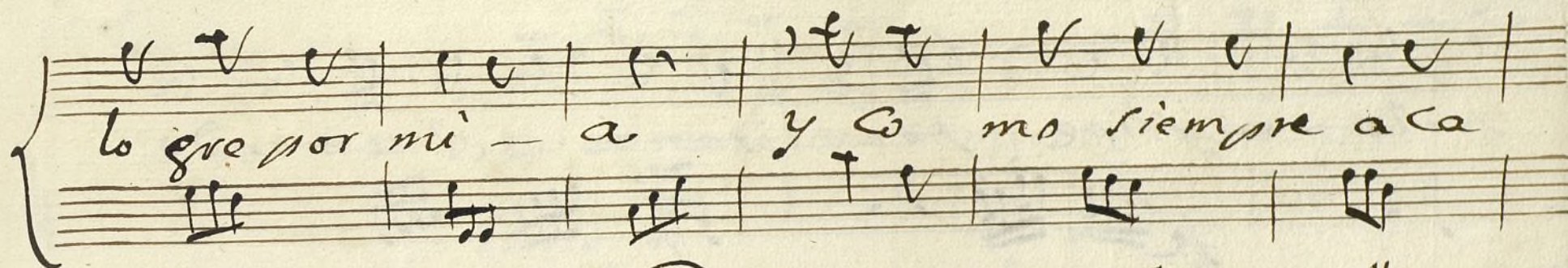
*no sea linda de idea mas ex-*

*traña mas equi - si - ta*

*pero el perdon de - ño - res -*

Ayuntamiento de Madrid







*carlo me aflige penatirana es el amor do*

*lencia tan hi numana*

*tan hi nu ma - na que al pecho aun tiempo*

*mis - mo que al pecho aun tiempo mismo hiel ya brasa -*

*que al pecho aun tiempo mismo hie la ya*

Ayuntamiento de Madrid



la ya bra sa que al pecho aum tiempo mi mo yel

ye la ya bra - sa ye la - ya bra - sa

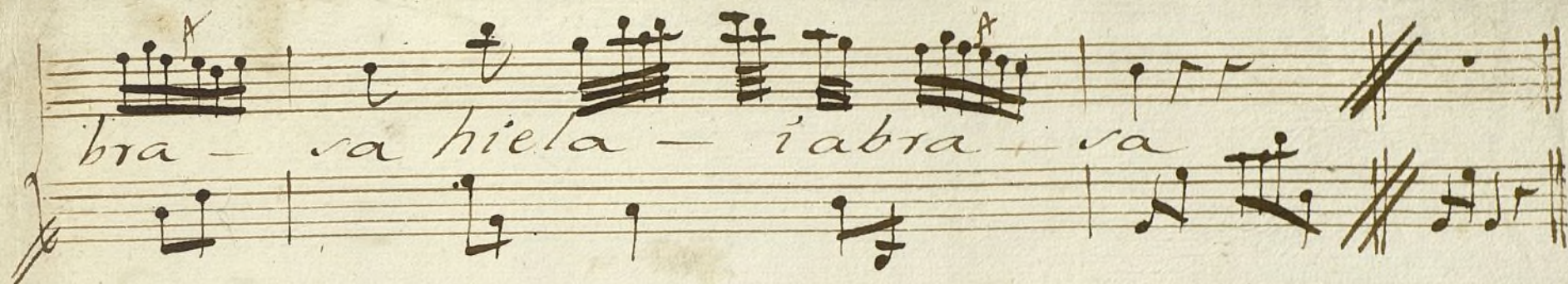
*allegro*

*Lani queridos  
desprecia los aplausos  
que hace Cupido %*



Ayuntamiento de Madrid





// *Tasi queridos  
despreciad los alagos  
que haze Cupido //*



Ayuntamiento de Madrid



Violin 1.º All.º

*P.º tonadilla à solo.*

Mus.  
90-20

*Vol.º*

*Allegro*



And re Poco P.O.  
Henderson 11/18/77





*Sequidilla* *Punkilap*

*And. mod.*

*2<sup>mo</sup>*

*1<sup>mo</sup>* *2<sup>mo</sup>* *3<sup>mo</sup>*



*verer a la Señal*



Ayuntamiento de Madrid



Violin 2º Allº

tonadilla a solo

mus  
90-20

Handwritten musical score for Violin 2º, titled "tonadilla a solo". The score consists of ten staves of music in 2/4 time, featuring various musical notations including notes, rests, and dynamic markings such as "p", "pº", "pº exº", and "pº". The music is written in a single system across the staves.

Voln







*Sigüillas* *Punto bajo* *ppw*

*All. Mod.<sup>to</sup>*

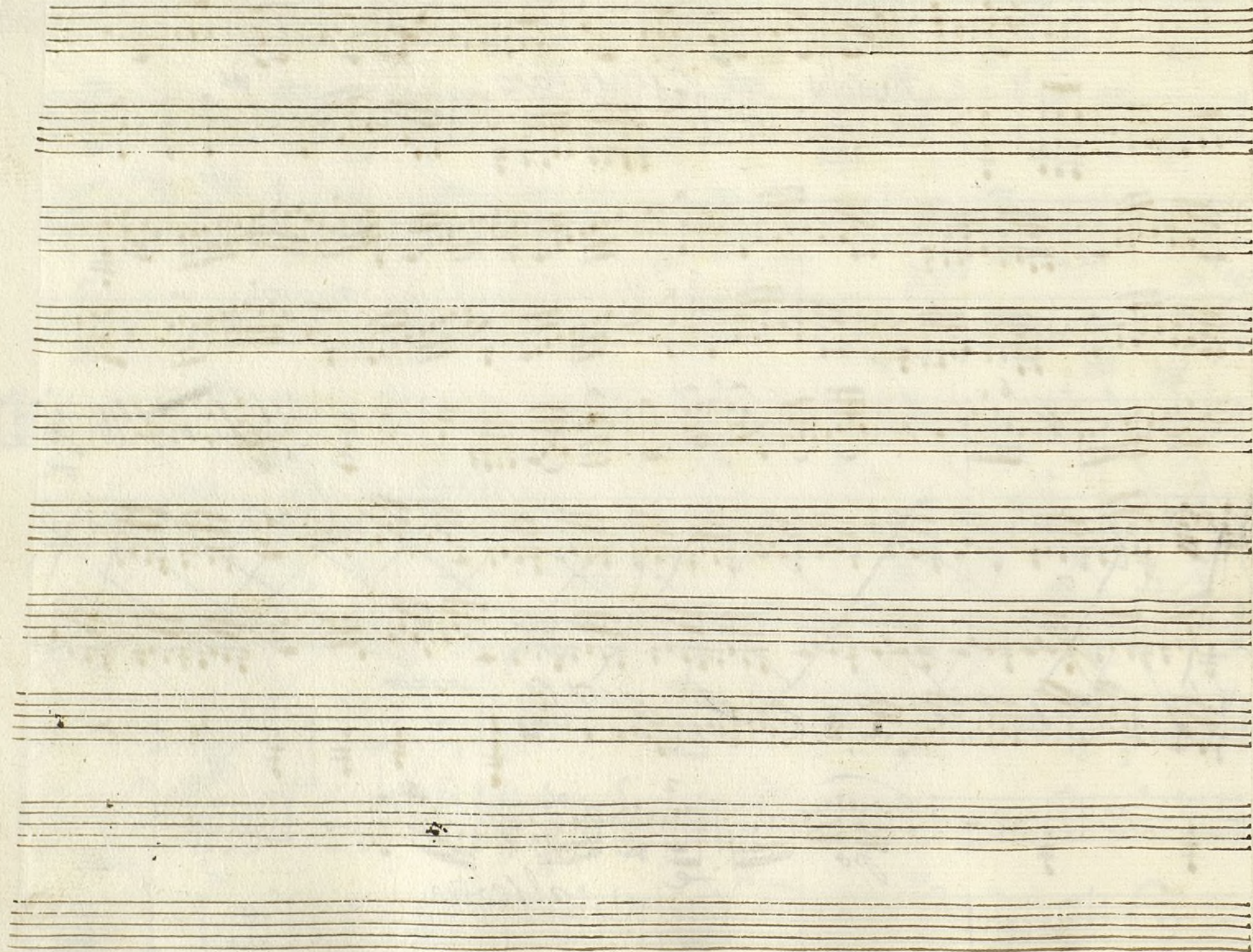
*fe*

*pp*

*con penna*

*fe* *allegro*





Ayuntamiento de Madrid



Violin 2.<sup>o</sup> *Allo*

tonadilla & solo.

Mus  
90-200

Handwritten musical score for Violin 2.<sup>o</sup>, featuring ten staves of music. The notation includes various dynamics such as *pp*, *fe*, *mo*, and *ex<sup>2o</sup>*, along with articulations like *ta* and *le*. The music is written in a single system across ten staves, with a key signature of two sharps (F# and C#) and a 2/4 time signature. The notation is dense, with many sixteenth and thirty-second notes, and includes various rests and slurs.

*Volte*



*And.<sup>te</sup> Poco*

*Andantino*  $\text{2}^{\text{o}}$   $\text{4}$   $\text{p}^{\text{o}}$  *rinforza*  $\text{3}$   $\text{6}$   $\text{p}^{\text{mo}}$

~~*Recitativo All.*  $\text{6}$   $\text{p}^{\text{o}}$  *Allegro*  $\text{3}$   $\text{p}^{\text{o}}$  *ce*  $\text{p}^{\text{o}}$~~

*Parabola*  $\text{p}^{\text{o}}$  *Puntado arco*  $\text{A}$   $\text{10}$   $\text{3}$   $\text{p}^{\text{mo}}$  *punteado*  $\text{arco}$   $\text{f}^{\text{o}}$



*Siquidillas*  
*All. Mod.º* *3* *Rumore* *pmo*

*pp* *pp* *Come prima*

*fe* *allegro* *Ornato*



Ayuntamiento de Madrid

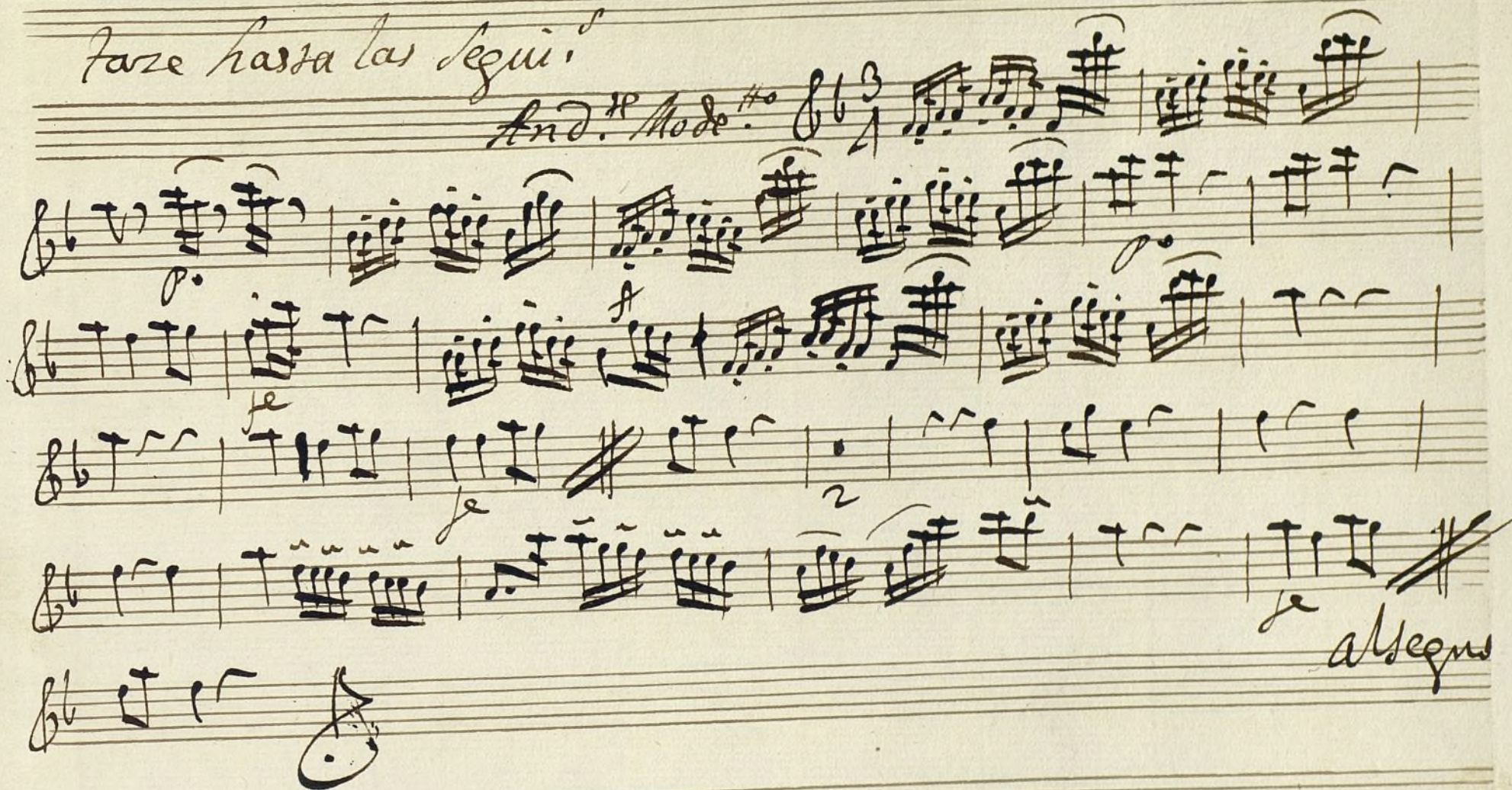


Oboe 1.º Sonadilla à Solo. +

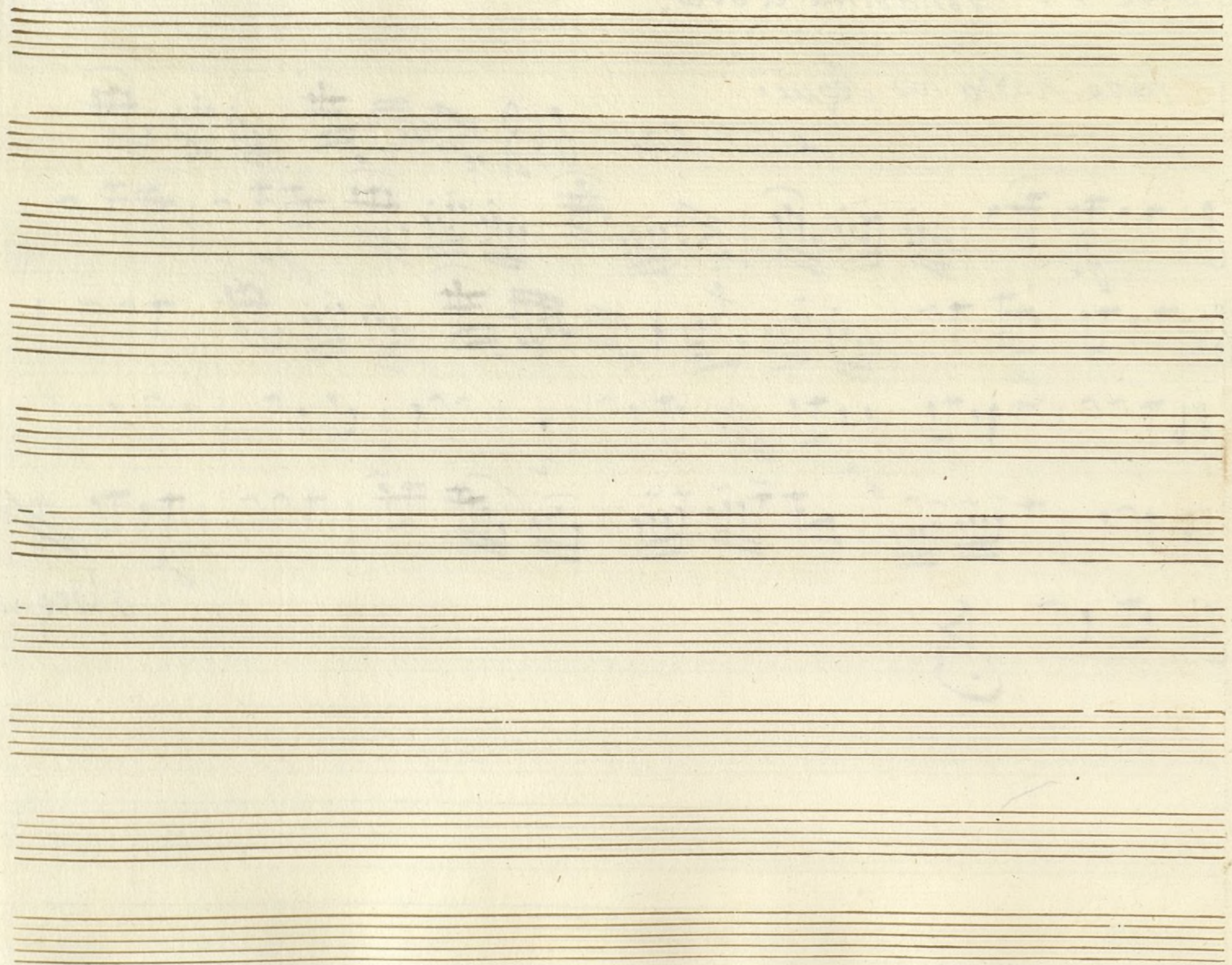
Mus 90-20

Faze hasta las Segui.º

And.º Mode.º







Ayuntamiento de Madrid



Oboe 2.<sup>o</sup> Tonadilla a solo +

Mus 90-20

face hasta las Segui.

*And.<sup>te</sup> Mode.*  $\text{No. 4}$   $\text{3/4}$

*allegro*



Ayuntamiento de Madrid







Seguidilla And. mod. *Infant*

~~Andante~~ *3*

*P.<sup>o</sup>* *And*

*P.<sup>o</sup>* *Primo* *P.<sup>o</sup> tenue*

2 vez a mal al ~~fin~~



Trompa 2.<sup>a</sup> tonadilla a solo All.<sup>o</sup>

8

mus 90-20

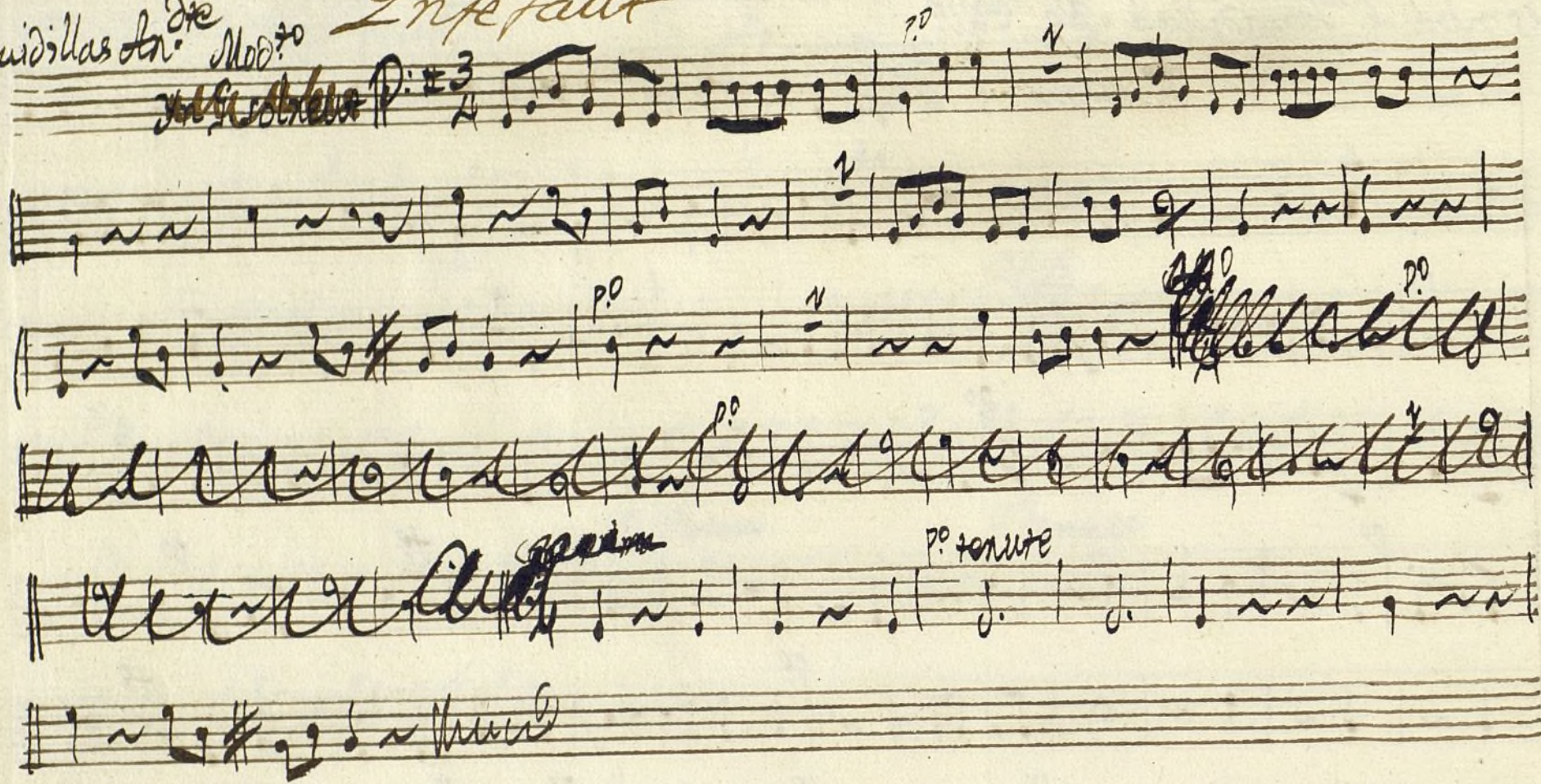
Inclarni

$\frac{2}{4}$  +acer) ~~De~~ ~~tacer~~ ~~De~~ ~~tacer~~  $\frac{3}{4}$  +acer)

Volta seguidillas



Seguidillas An.<sup>da</sup> Mod.<sup>to</sup> *Infant*

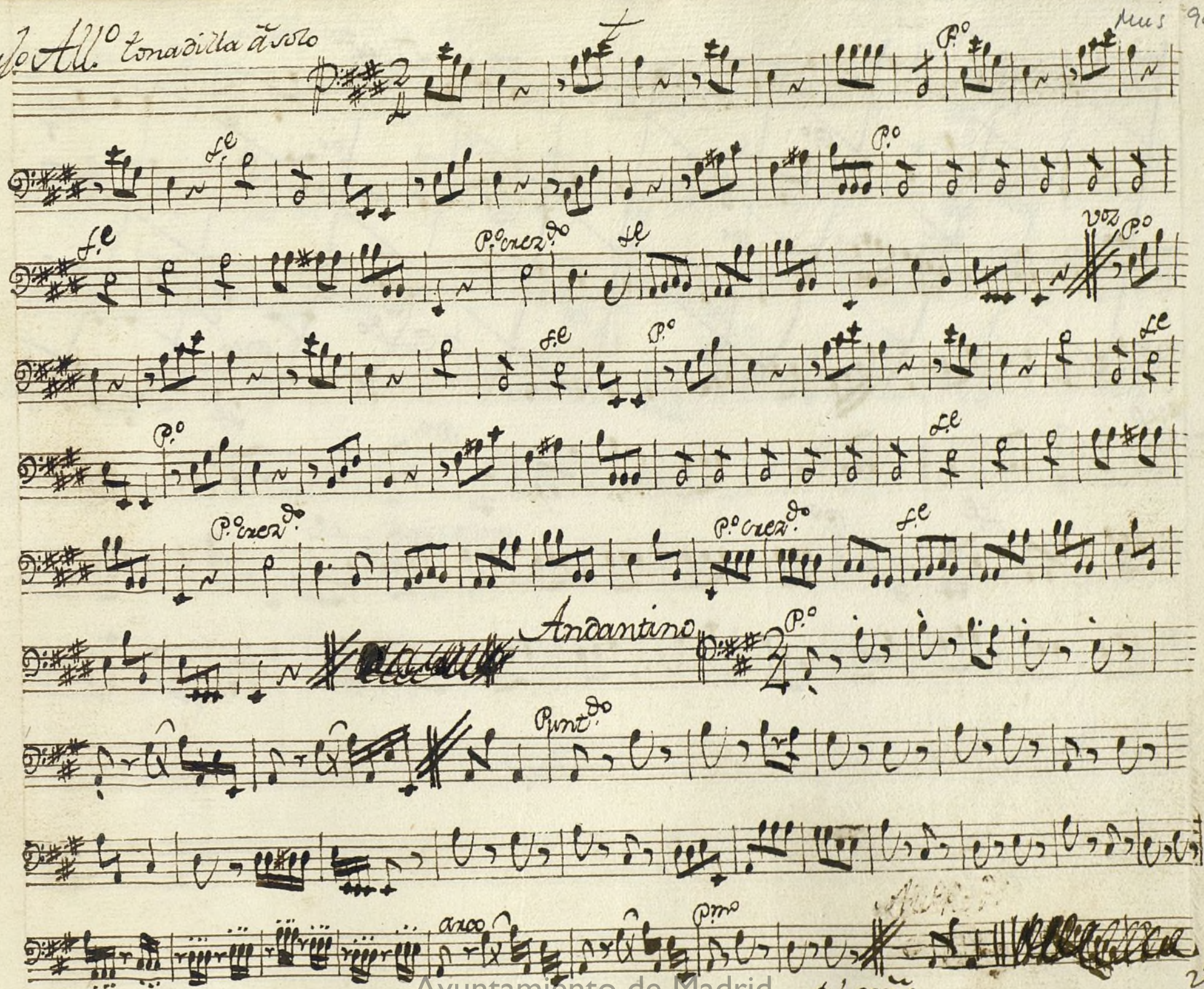


2 veces mal ala #



Basso All.<sup>o</sup> con adilla a solo

mus 90-20



Ayuntamiento de Madrid

Al segno

Volte P.<sup>te</sup>



*All.<sup>o</sup>*

*Por Esolre ut*

*Sequi: And: Mode*

*allegro*