

~~Leg. 1.º n.º 1~~

(Leg. 1.º n.º 2)

Joaquina

Mus 95-17

41-56

t

Fon.^a a Duo

La Mujer impaciente.

De Laserna.

2

Allegro

Joag. na

*Mi des tino infeloz y te
los Criados los trae atun*

*rano mea Casado con un Cala vera q^e destruye mi do
vidos las criadas las trata a baqueta y me mira con*

*curas no te niendo empleo ni renta no
precio y me asiste con mucha miseria y me*

Apuntamiento de Madrid

esto es padecer esto si es pe.

el se acerca ya terrible pe

nar y solo es remedio sufrir y callar sufrir y callar y

sar Dios quiera q. pueda al ver lo callar al ver lo callar Dios

solo es remedio sufrir y callar sufrir y callar

Al Segno

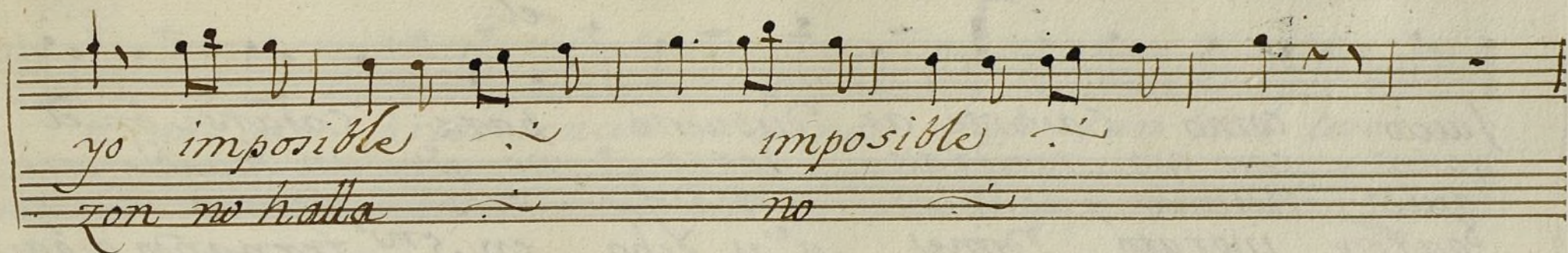
quiera q. pueda al ver lo callar al

Faco.
All. Perico Perico pronto con mil
Diablos q^e un Amigo mio me estará esperando
benga el sombrero benga la espada los dos pañuelos
traeme la Casa a tal tardar q^e no
puedo esperar mas q^e no q^e no

Ayuntamiento de Madrid

q.º no *ella.* *Con una vida*
Dueño querido
tan desahogada desespe rada desespe rada del.
neine el contento q.º en el momento q.º en el momento te.
todo esto - *con la paciencia de mis Criados*
serviré yo de tus manos no quiero nada

todo es enfados todo xavia y furor o q.º
 estas cansada estas no te e de ver o q.º an
 pena q.º corage me devora el corazon con un genio tan es-
 quiza q.º tormento me destruye con furor para tan grande con.
 traño imposible es vivir yo impo sible es vivir
 gozas no halla alivio el corazon no halla alivio el cora
 crei. fe



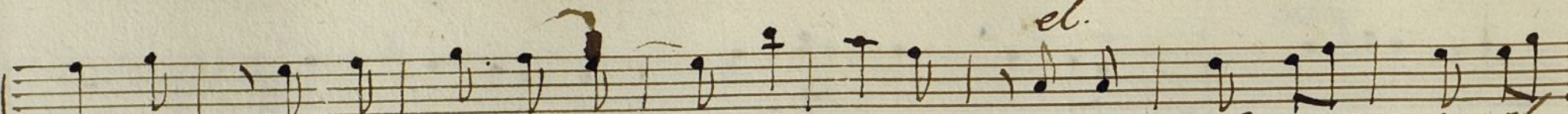
(Parola) ella) oye esporo dos palabras
y modera tu furor
el... no entri aora para eso
(ella) eres hombre sin razon
el... soy q' me caso contigo
que es la d'edicha mayor
ella... escucha q' es importante
el... vaya de conversacion
q' se a pronta
q' tengo infinito q' hacer oy.

Al Segno.

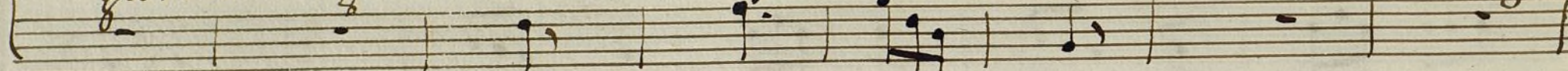
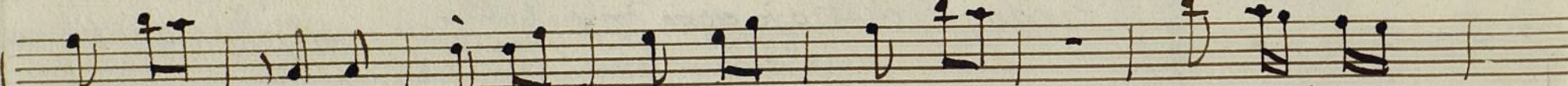
All.

ella:
Siendo un hombre tan sin
Despide tu Pelu -
Siendo un hombre distin
Del dote q' te entre -

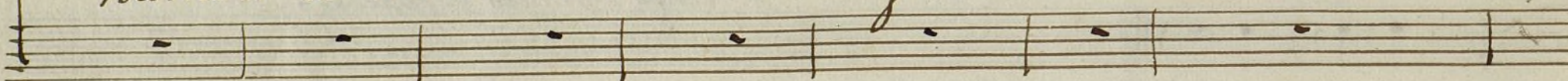

el.



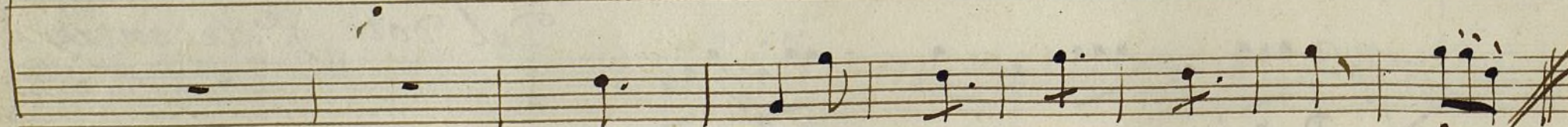
Juicio como Casarte as dispuesto para Casarse en el.
 quero con eso tendras dorro no q.^{er} es un mueble pre
 guido nunca pagas los Criados otros que son mas que.
 garon ingrato dime q.^{er} as echo en S.ⁿ fernando a ga.

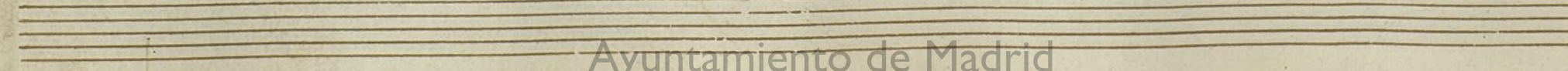
dia es mui util no te nerlo es
 ciso para evaguar mis ne gocios para
 yo suelen hacer otro tanto suelen
 nancias lo tiene cierto su geto lo

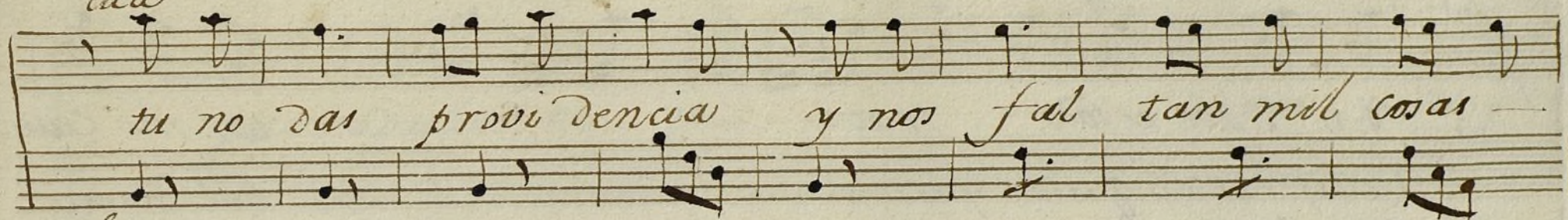
Allegro
 Trema.



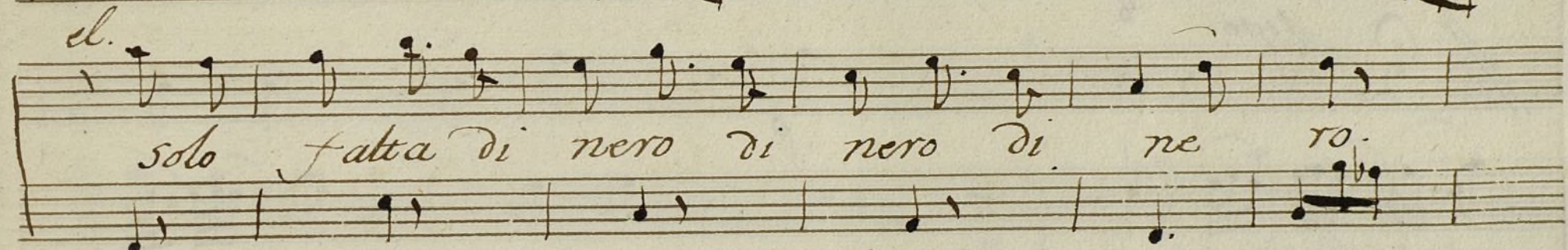
po



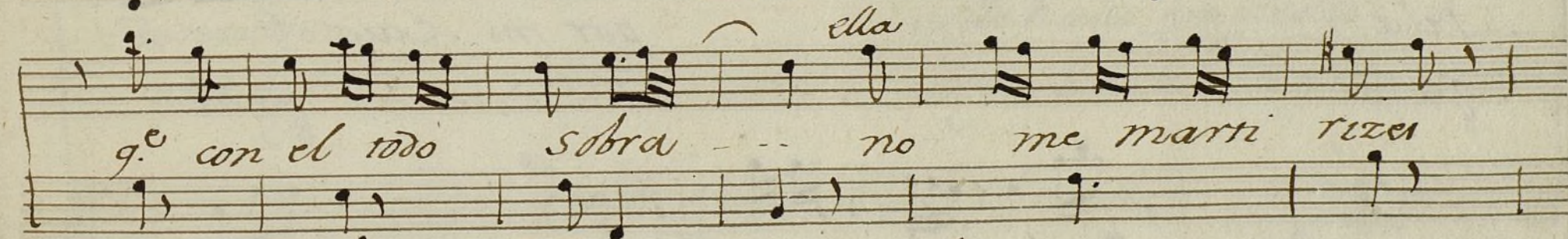
ella



el.



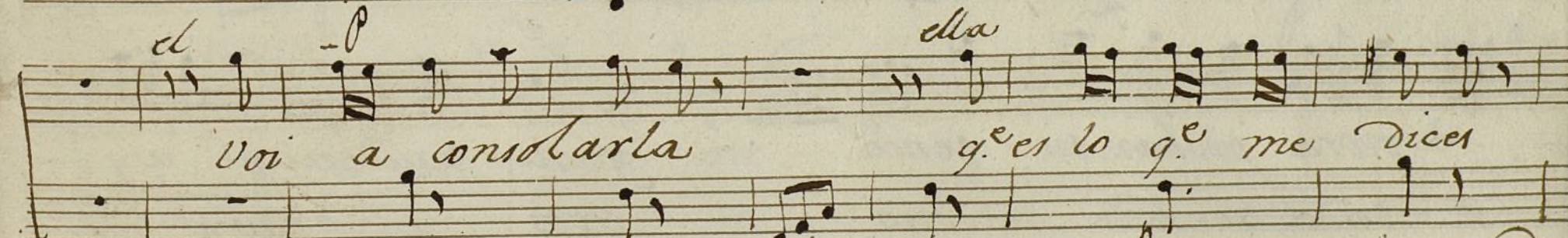
ella



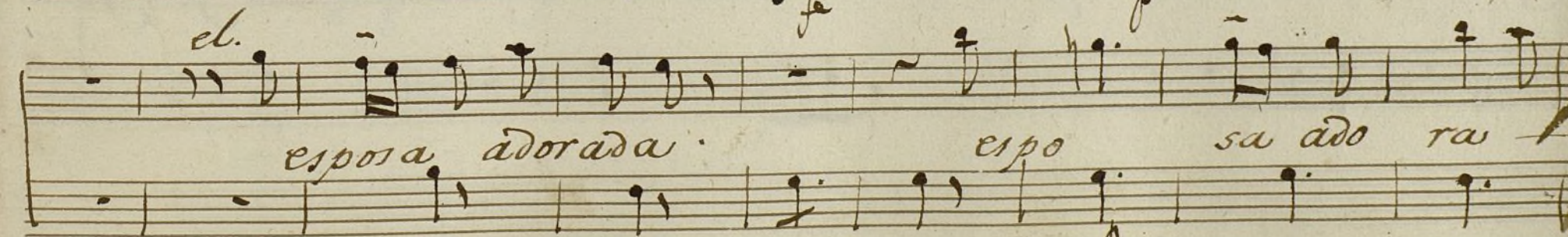
el.

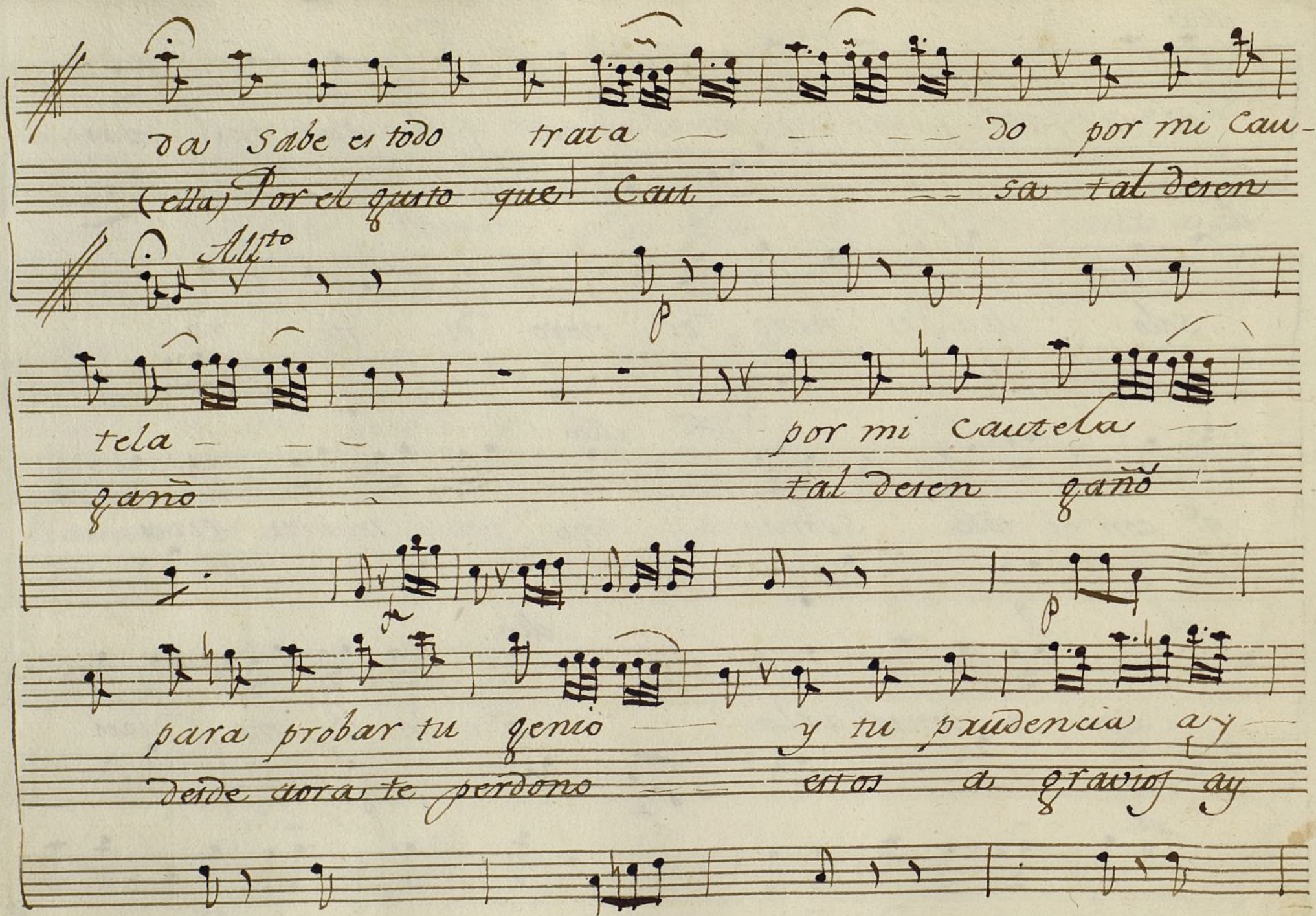
p

ella



el.



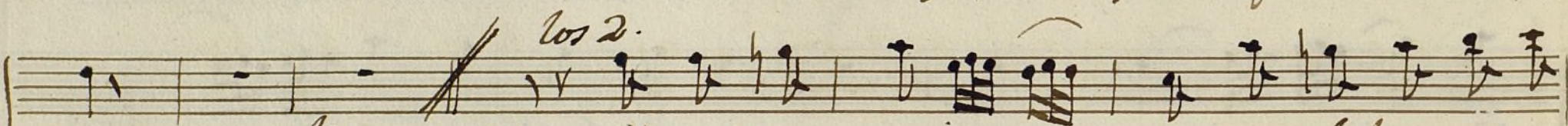


da sabe es todo trata — — — do por mi cau-
 (ella) Por el gusto que! Can — — — sa tal desen
Alto
 tela — — — por mi cautela
 gaño — — — tal desen gaño
 para probar tu genio — — — y tu prudencia ay
 desde ahora te perdono — — — estos a gravios ay

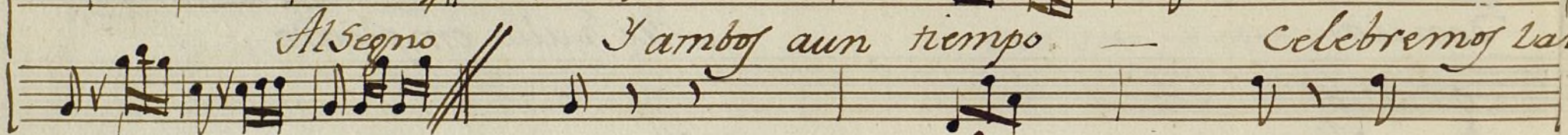
para probar tu ge... nio y tu pru.
 Desde ahora te perdo... no estos as
 dencia... Me hallo empleado...
 gravios... y para siempre...
 y no quise asta ora... manifes tarlo - ay -
 la alegria y contento... Desde ahora reines ay



- y no quise asta ao - ra manifes tarlo -
la alegria y con ten - to desde ahora reine



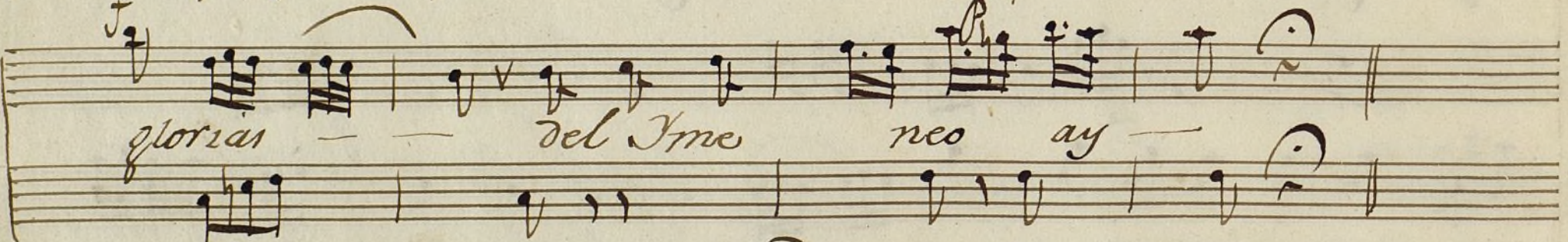
los 2.



Al Segno

Y ambos aun tiempo

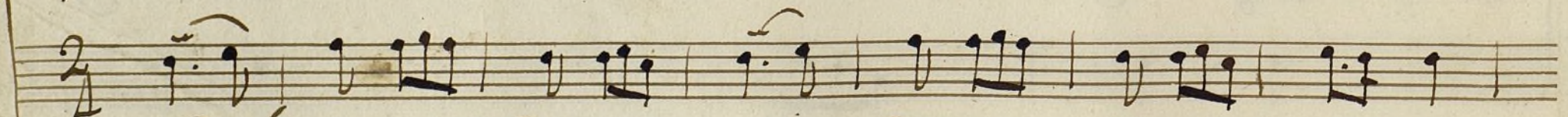
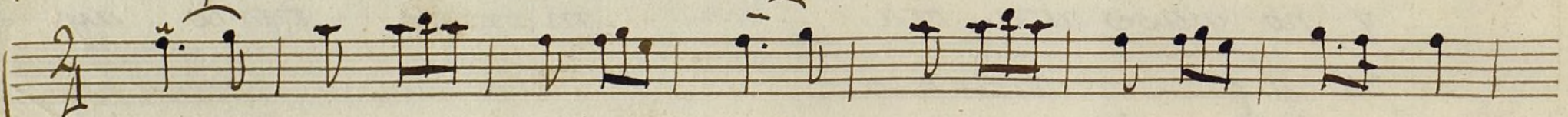
celebre mos las



glorias

del Ime

neo ay



Dul ce prenda que xi da yo te pto mto

All.

dulce prenda querida — yo te pro meto — q.^e siem.

— pre de mi vida se as el dueño q.^e siem

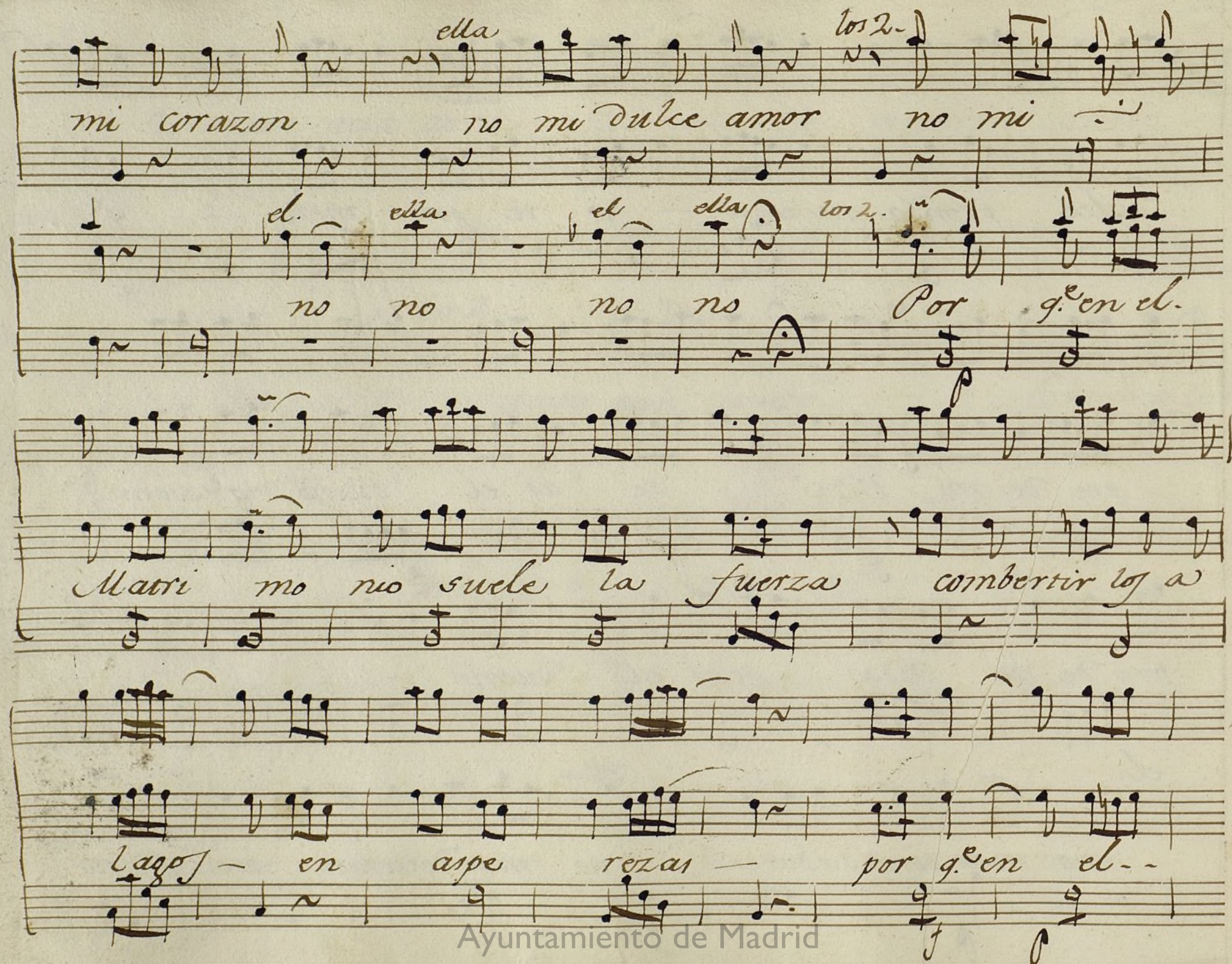
pre de mi vida seas el dueño —

el. ella el

no mas sin sabores no mas de azo nes no

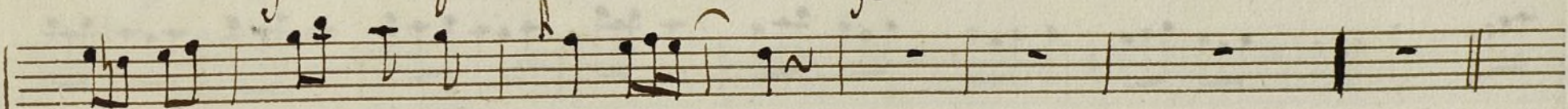
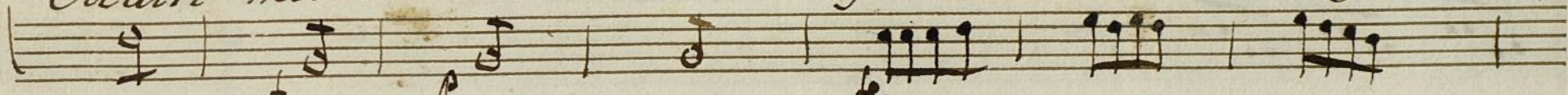
Ayuntamiento de Madrid

ella *los 2.*
mi corazon no mi dulce amor no mi
el. ella el ella los 2.
no no no no Por q.^e en el.
Matti no suele la fuerza combertir lo a
Lago - en aspe rezas - por q.^e en el...

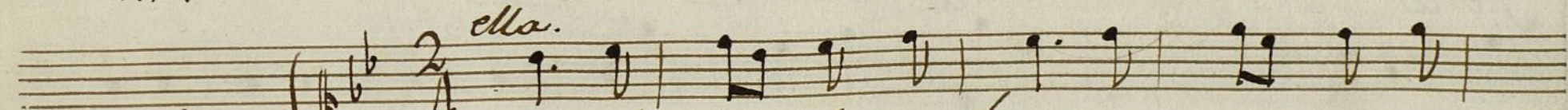
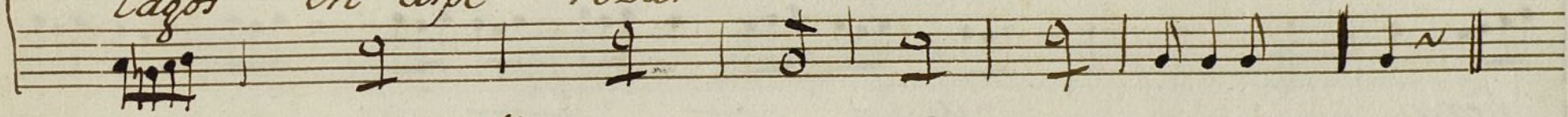




Matri monio — suele la fuerza combertir lo a.



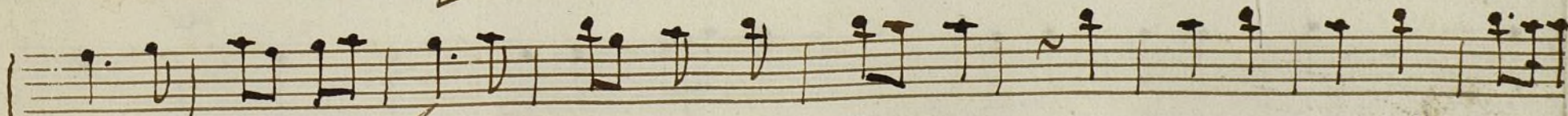
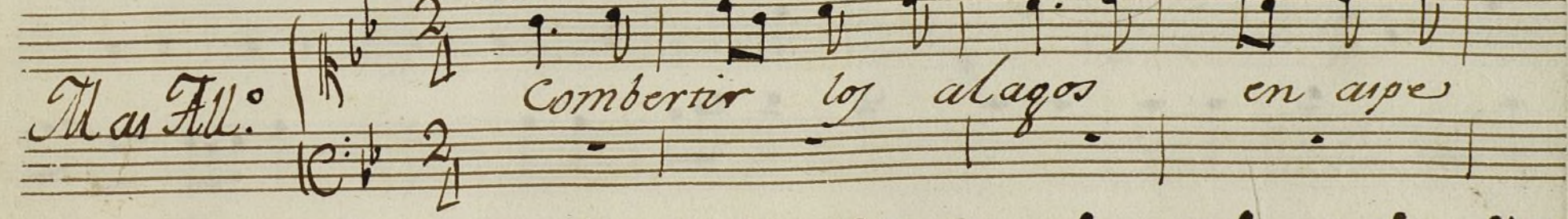
lagos en aspe rezas



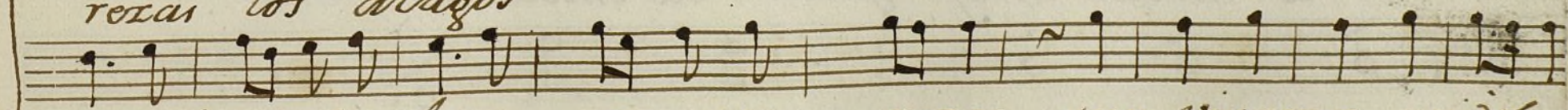
Mas All.

ella.

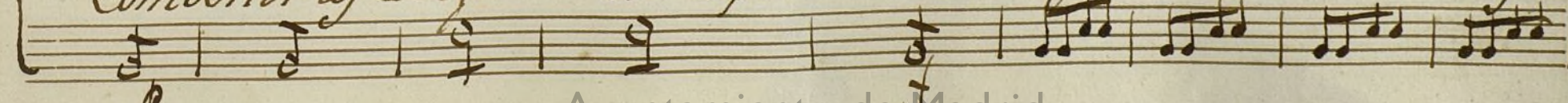
Combertir lo alagos en aspe



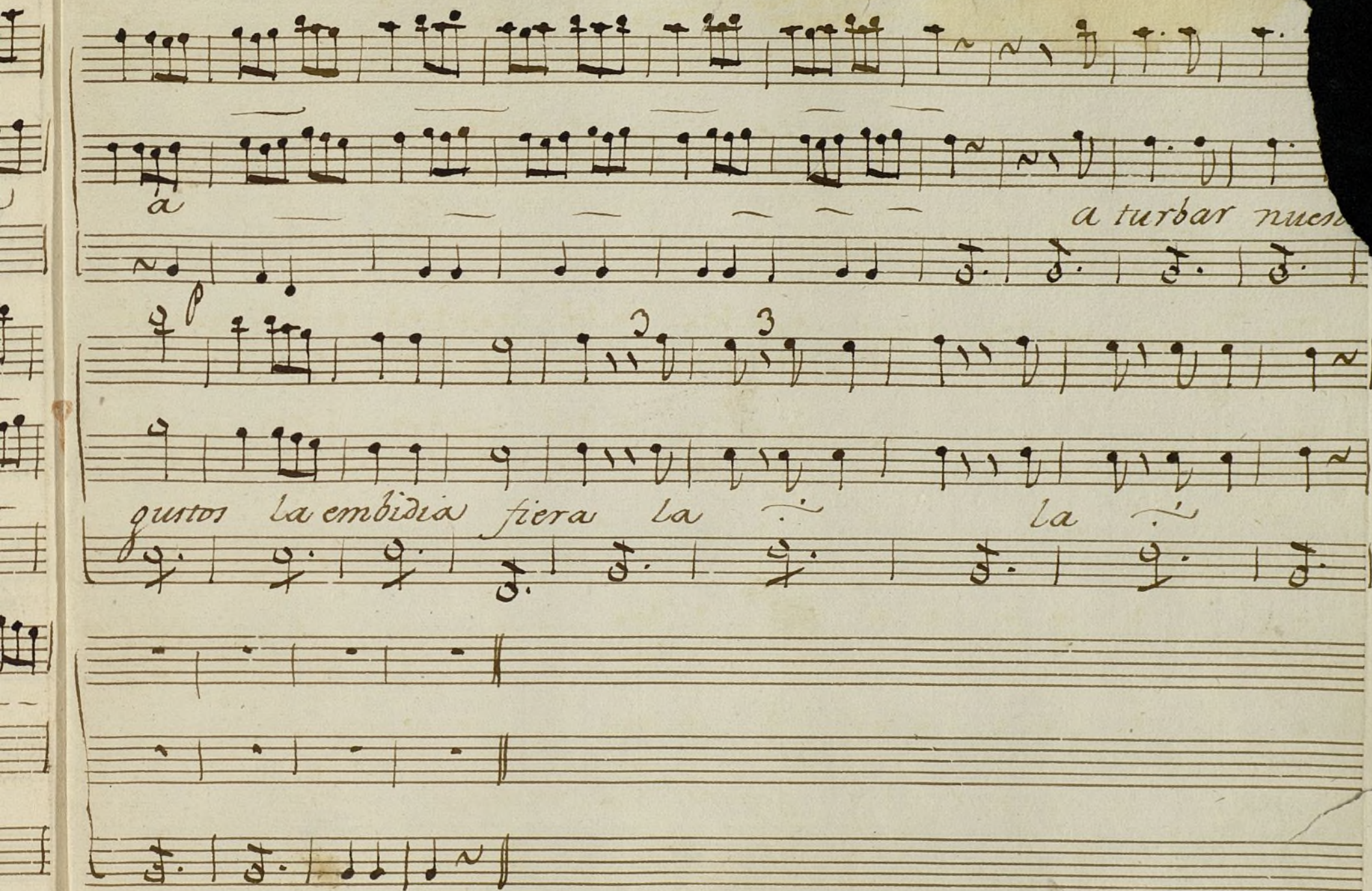
rezas los alagos



Combertir lo alagos en aspe rezas pues vivamos unidos



Handwritten musical score for "La embidia" by Juan José de Larrea. The score is written on ten staves. The lyrics are: "sin q. se arreba a turbar nuestros gustos la embidia" (staves 2-3), "fiera" (staves 4-5), and "a turbar ntros gustos la embidia fiera" (staves 8-9). The music features various note values, rests, and dynamic markings like "a" and "p".



a

a turbar nues

gustos la embidia fiera la la

Ayuntamiento de Madrid

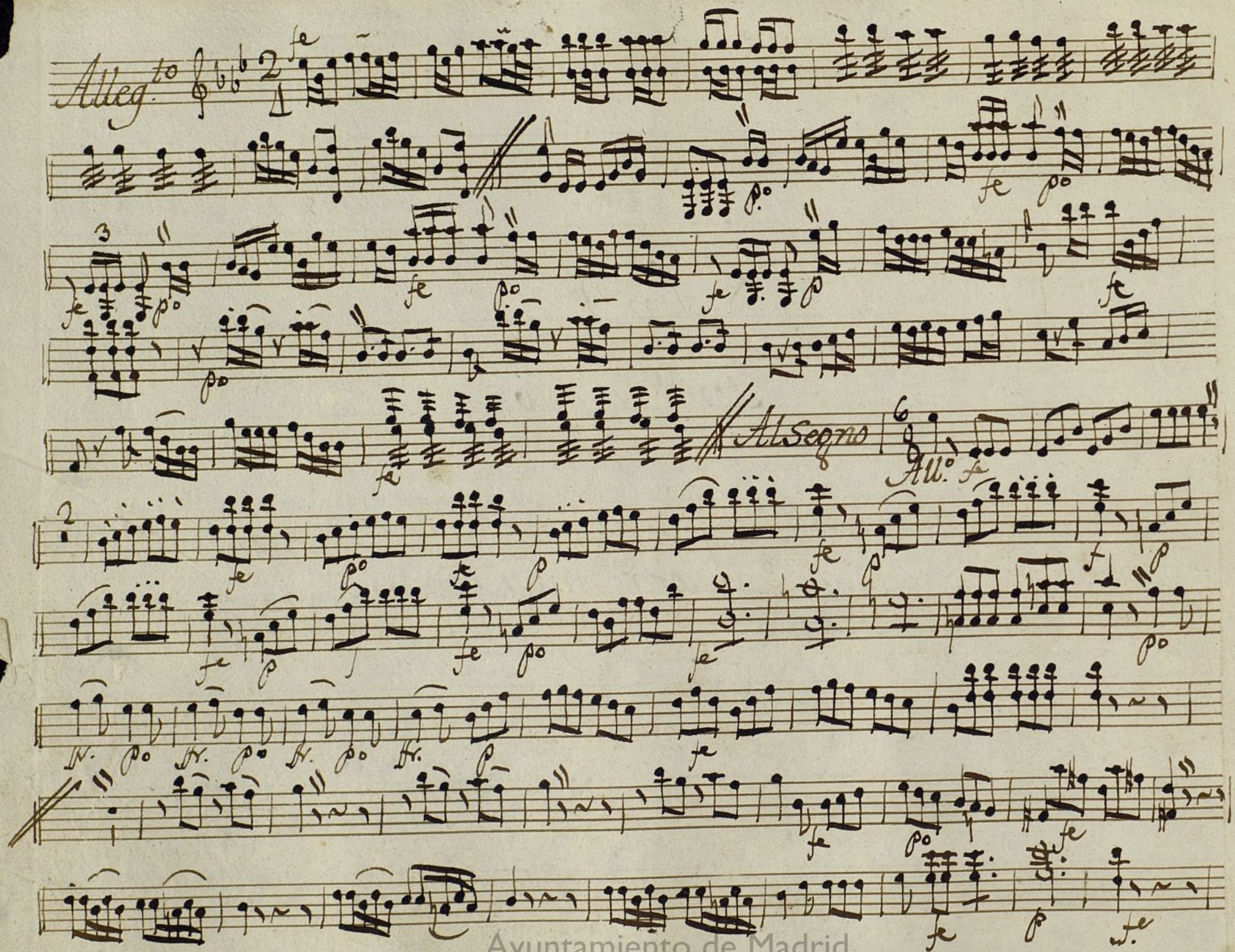
12 00055527

t

Violin 1.^o

Fon.^a a duw.

La Mujer impaciente.



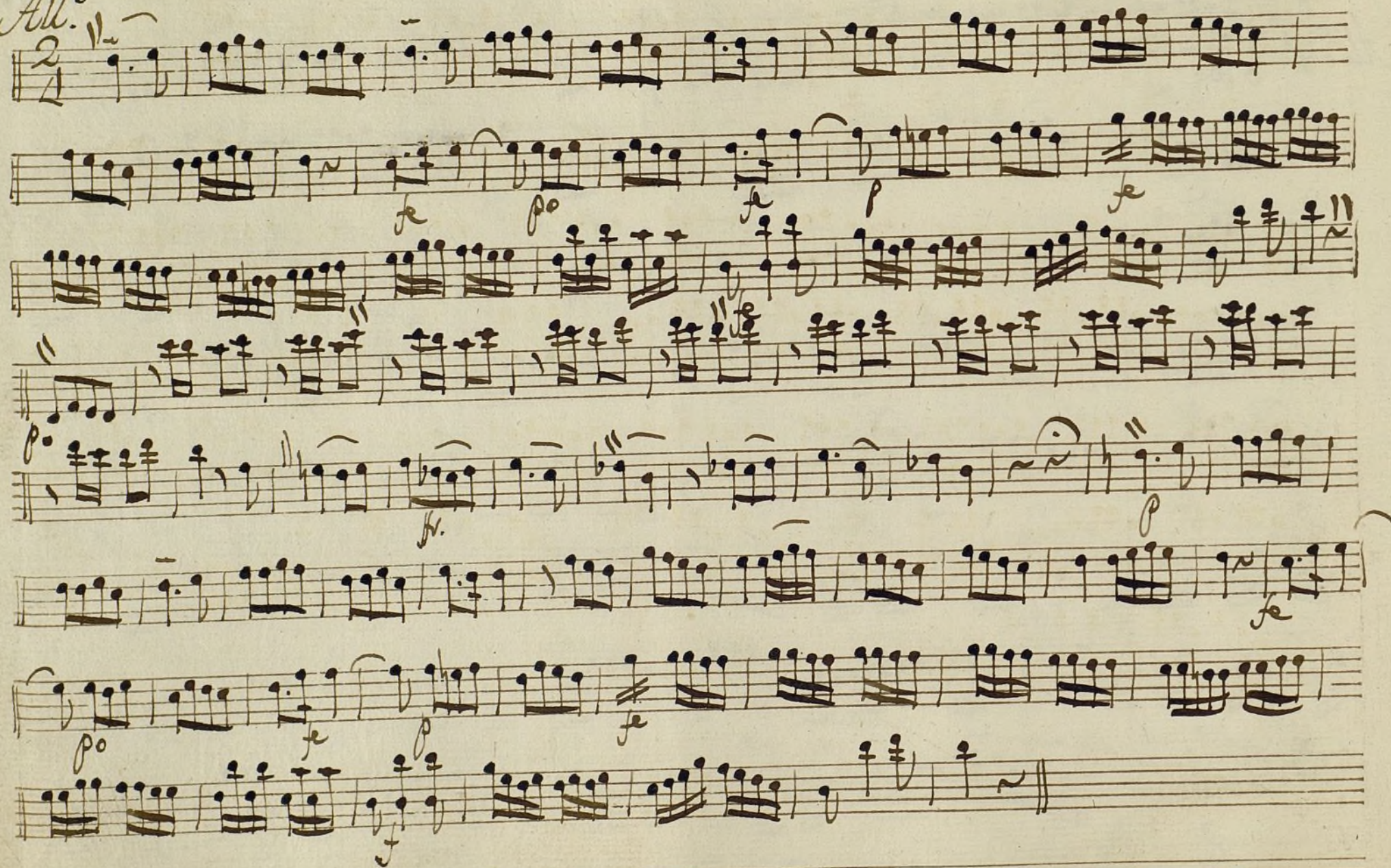
Al Segno

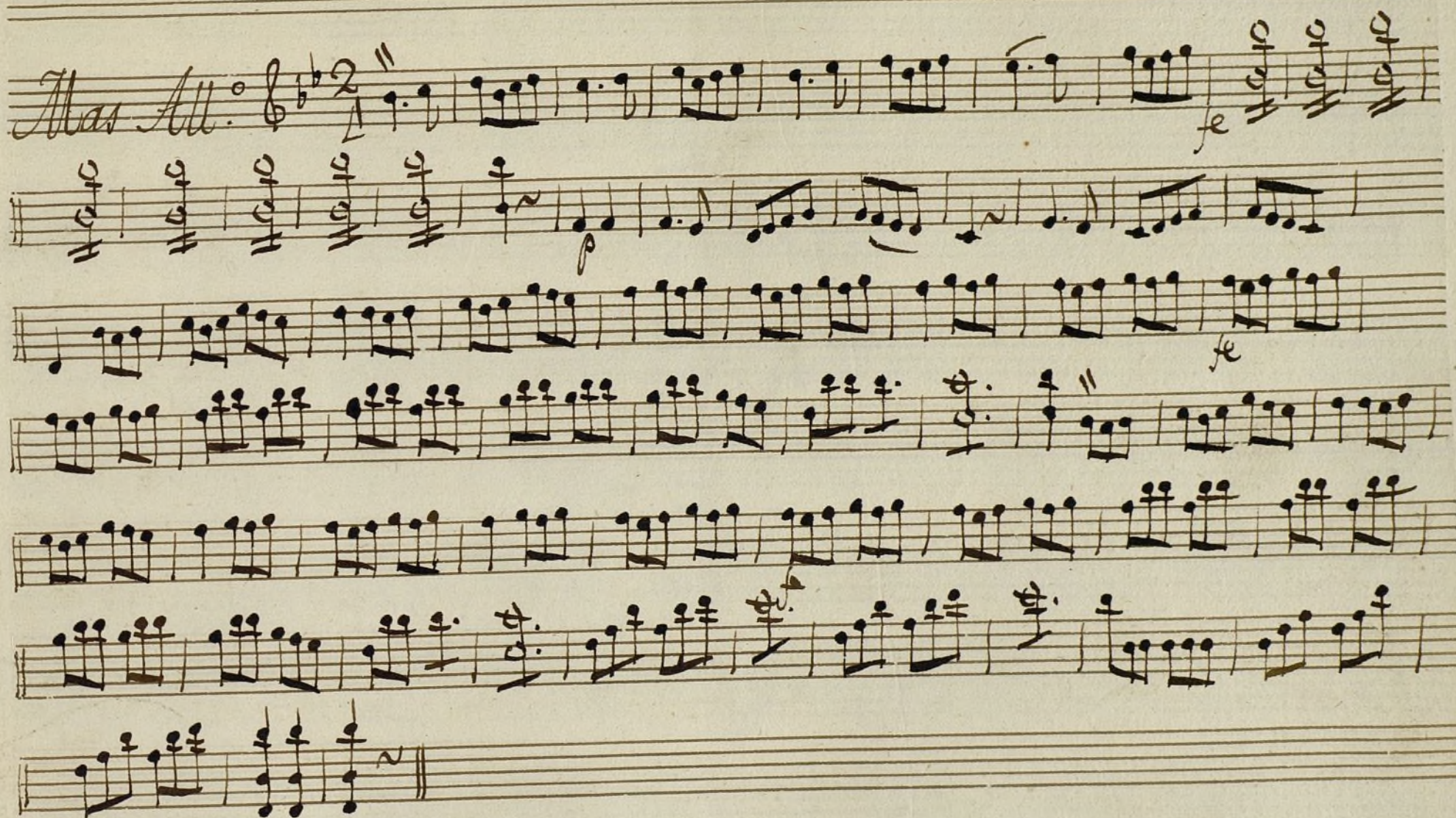
Handwritten musical score on ten staves. The notation includes various musical symbols such as notes, rests, and dynamic markings. The score is written in a historical style, likely from the 18th or 19th century.

Dynamic markings include *fu*, *po*, *fe*, *Allegro y patola*, *Allegro 3 mai.*, *All.^{to}*, *m. fe*, *Allo Parr.*, and *U. 5.*

The score concludes with a double bar line and a 2/4 time signature.

All.^o





Ayuntamiento de Madrid

1200055527

t

Violin 1^o

Son^a a duo

La Mujer impaciente
//

A handwritten musical score on aged paper, featuring ten staves of music. The first staff is marked 'Allegro' and '2/4'. The music is written in a single system, with various dynamics like 'p' (piano) and 'f' (forte) indicated. The score includes a section marked 'Allegro' and another marked 'Allegro' with a '6/8' time signature. The final staff is marked 'Allegro y Parola'. The handwriting is in a cursive style, and the paper shows signs of age and wear.

Handwritten musical score on ten staves. The notation includes various musical symbols such as notes, rests, and dynamic markings.

Key markings and tempo changes include:

- All.* (Allegro) at the beginning.
- 3 mal.* (three times) marking a section.
- Alleg.^{to}* (Allegretto) marking a section.
- Alor. Parr.* (Alor. Parr.) marking a section.

The score concludes with a double bar line and the number *2* below the staff.

Dynamic markings include *p^o* (piano) and *fe.* (forte).

At the bottom of the page, the text "Ayuntamiento de Madrid" is visible.

All.^o

A handwritten musical score on eight staves. The notation is in brown ink on aged paper. The first staff begins with a treble clef and a 2/4 time signature. The music consists of various note values, including eighth and sixteenth notes, often beamed together. There are several dynamic markings in italics: 'fe' (forte) and 'p^o' (piano). The score ends with a double bar line and a fermata on the final note of the eighth staff.



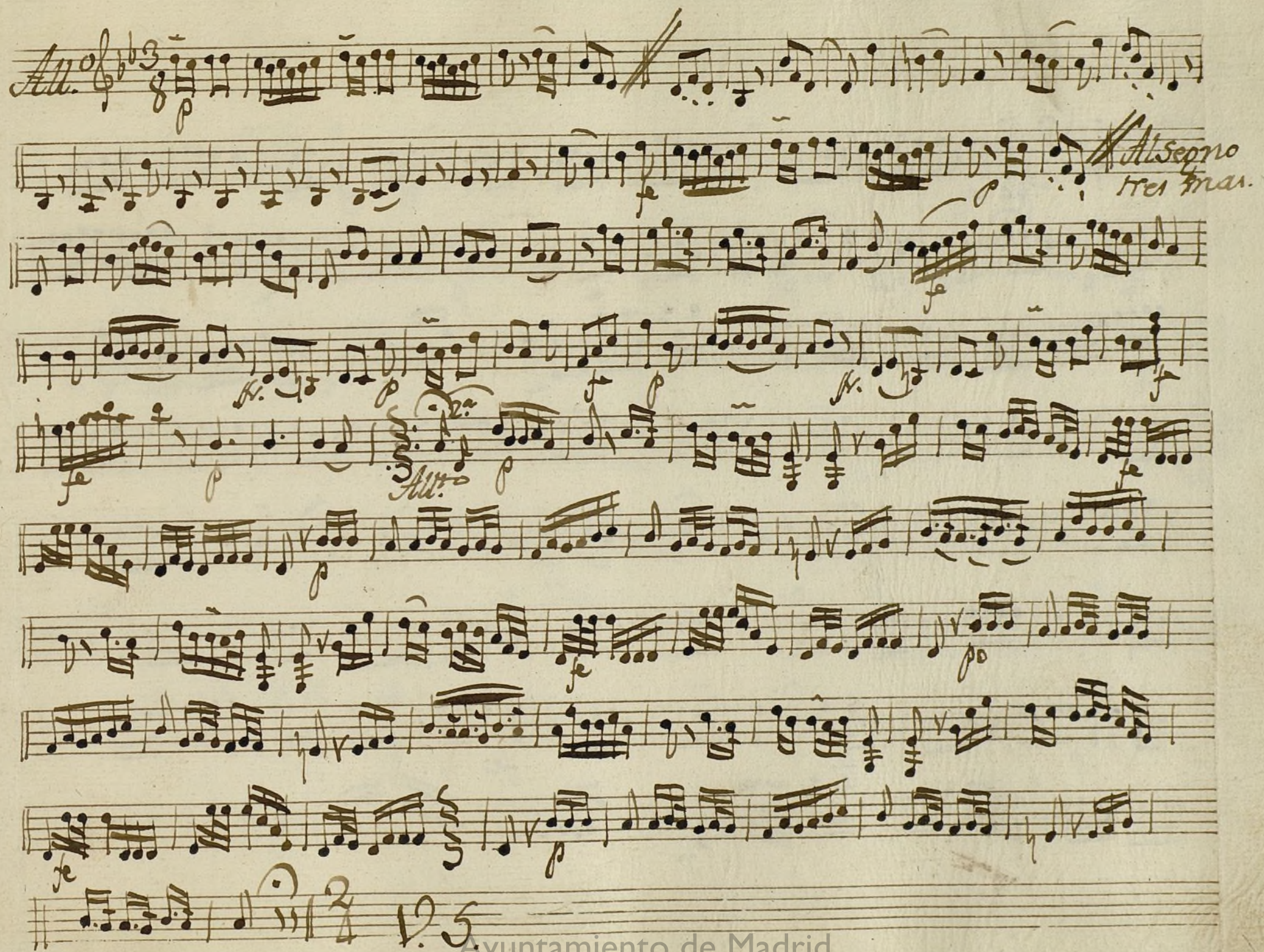
+

Violin 2.^o

Fon.^a a Duo.

La Mujer impaciente.

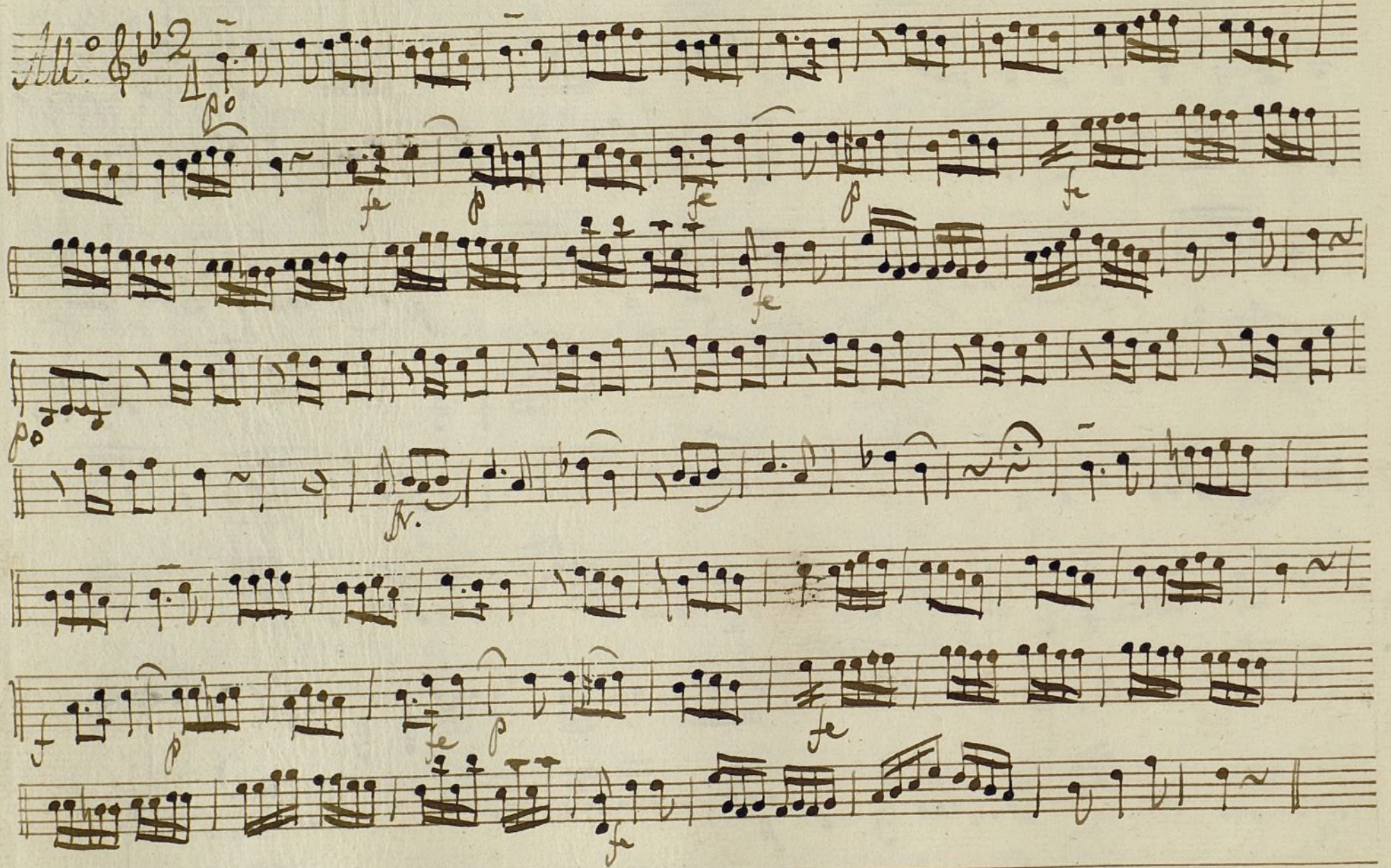
Handwritten musical score for a guitar piece, featuring multiple staves with musical notation, including treble and bass clefs, time signatures (2/4, 6/8), and dynamic markings (p, fe, p.o.). The score includes sections labeled 'Allegro', 'Allegro', and 'Parola'.

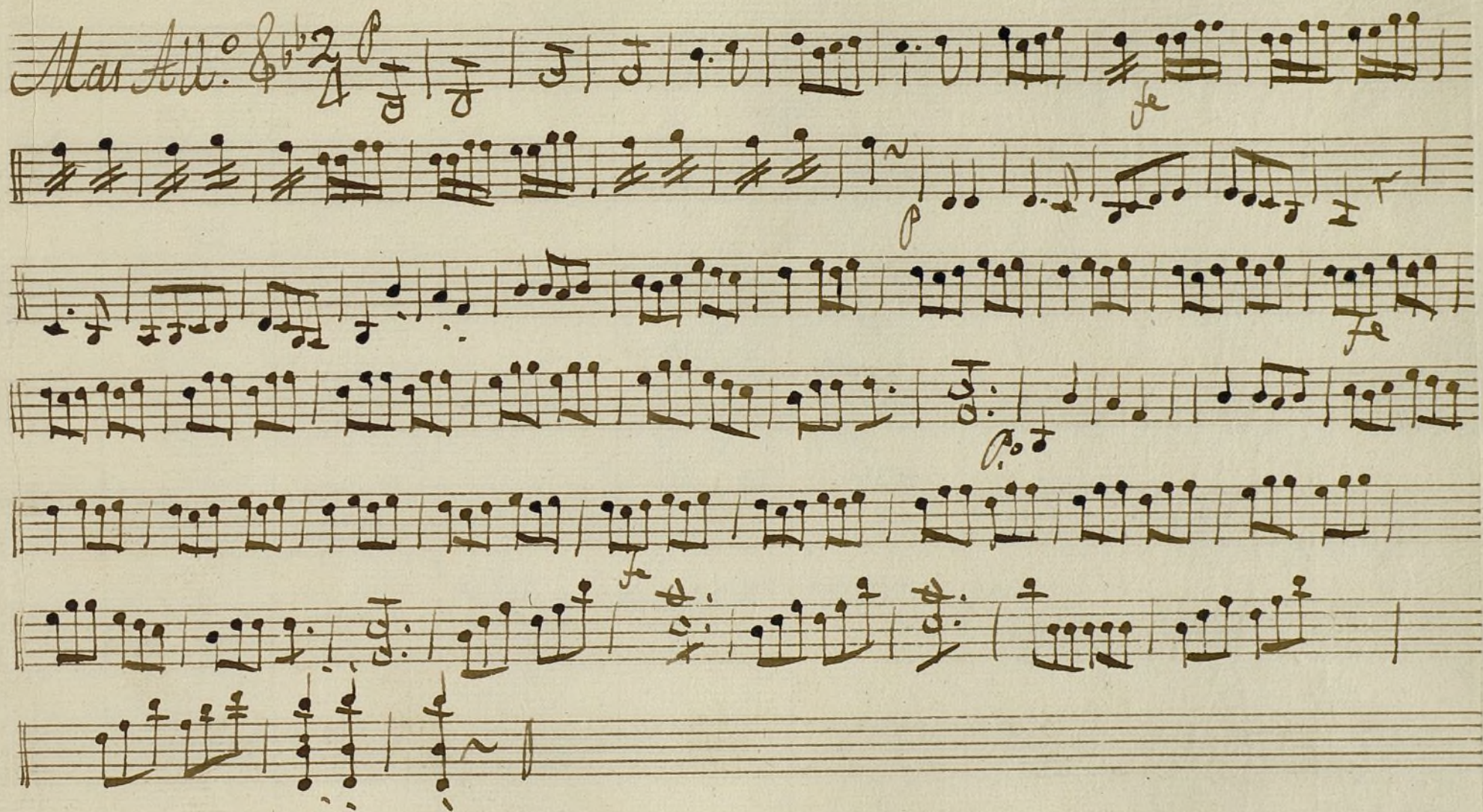
All. 

Allegro
Tr. mar.

All.

2 5





Ayuntamiento de Madrid

1200055527

t

Violin 2^o

Fon^a à Duo

La Mujer impaciente
ff.

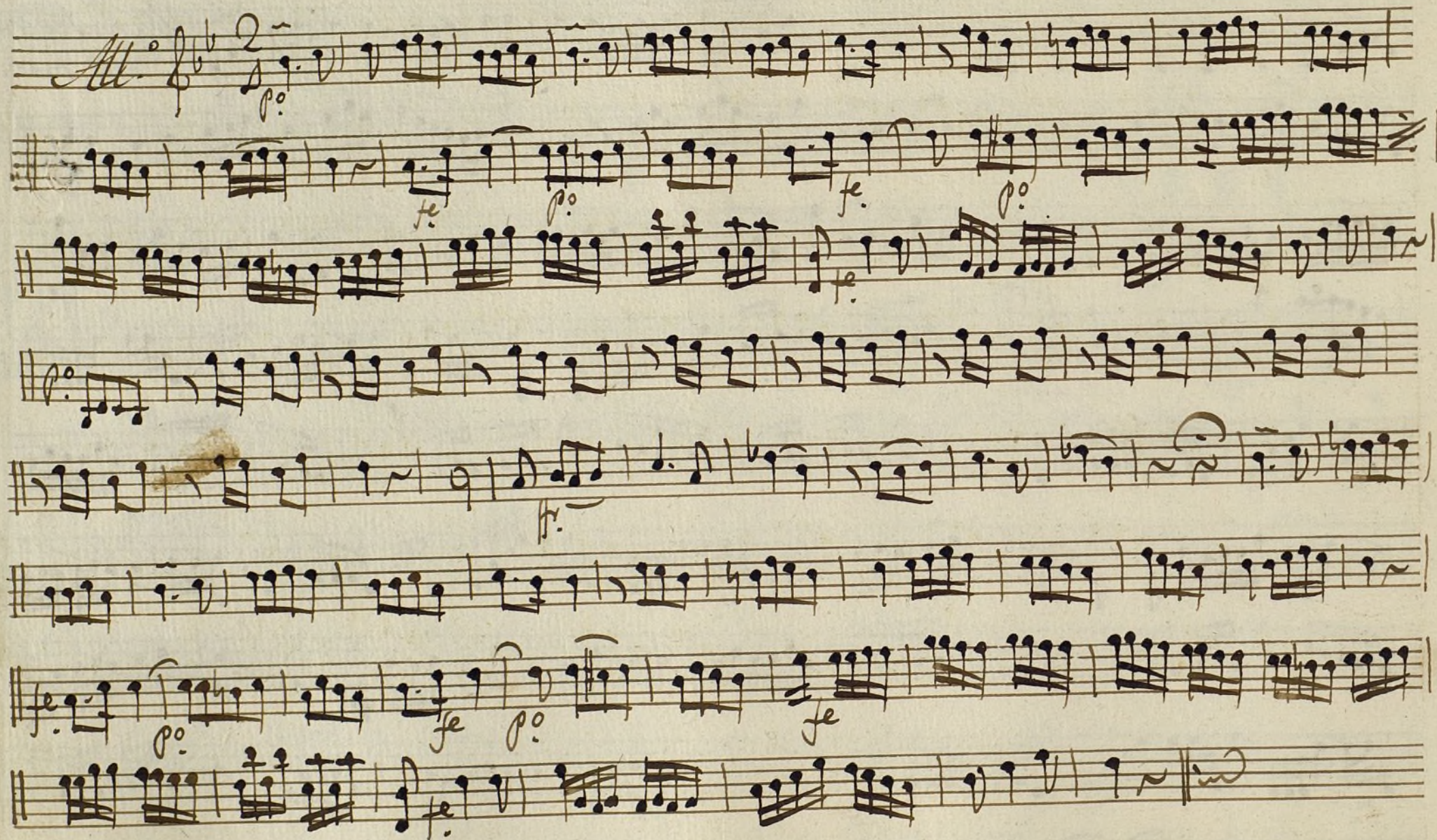
A handwritten musical score for the song 'The Rose Tree'. The score is written on four staves. The first staff begins with the tempo marking 'Allegro' and the time signature '2/4'. The music is in G major, indicated by one sharp (F#). The notation includes various musical symbols such as notes, rests, and dynamic markings like 'p' (piano) and 'f' (forte). The handwriting is in a cursive style, typical of 18th or 19th-century manuscript notation. The paper is aged and slightly discolored.

Handwritten musical score for three staves. The first staff is marked "Allegro" and has a "6" above it. The second staff has "Allo fe" above it. The third staff has "p.o. fr." repeated below it. The music is written in a historical style with various notes, rests, and dynamic markings.

A handwritten musical score on two staves. The top staff begins with a treble clef and a key signature of one sharp (F#). It contains a series of eighth and sixteenth notes, with some rests. Dynamic markings 'fe' and 'p.o.' are visible. The bottom staff also contains musical notation, including some beamed sixteenth notes and rests. It features dynamic markings 'fe', 'p.o.', and 'f'. The handwriting is in dark ink on aged, slightly yellowed paper.

Handwritten musical score on a single staff, featuring various notes, rests, and dynamic markings. The notation includes a treble clef, a key signature of one flat (B-flat), and a common time signature (C). The score is written in brown ink on aged, slightly discolored paper. The notation includes a treble clef, a key signature of one flat (B-flat), and a common time signature (C). The score is written in brown ink on aged, slightly discolored paper. The notation includes a treble clef, a key signature of one flat (B-flat), and a common time signature (C). The score is written in brown ink on aged, slightly discolored paper.

Handwritten musical score on ten staves. The notation includes various musical symbols such as notes, rests, and dynamic markings like *Allegro*, *Andante*, *Allegro*, *Andante*, *Allegro*, *Andante*, *Allegro*, *Andante*, *Allegro*, and *Andante*. The score is written in a single system across the staves. The first staff begins with a treble clef and a key signature of one flat. The tempo markings are: *Allegro*, *Andante*, *Allegro*, *Andante*, *Allegro*, *Andante*, *Allegro*, *Andante*, *Allegro*, and *Andante*. The score concludes with a double bar line and a final measure. The text "Ayuntamiento de Madrid" is visible at the bottom of the page.





Ayuntamiento de Madrid

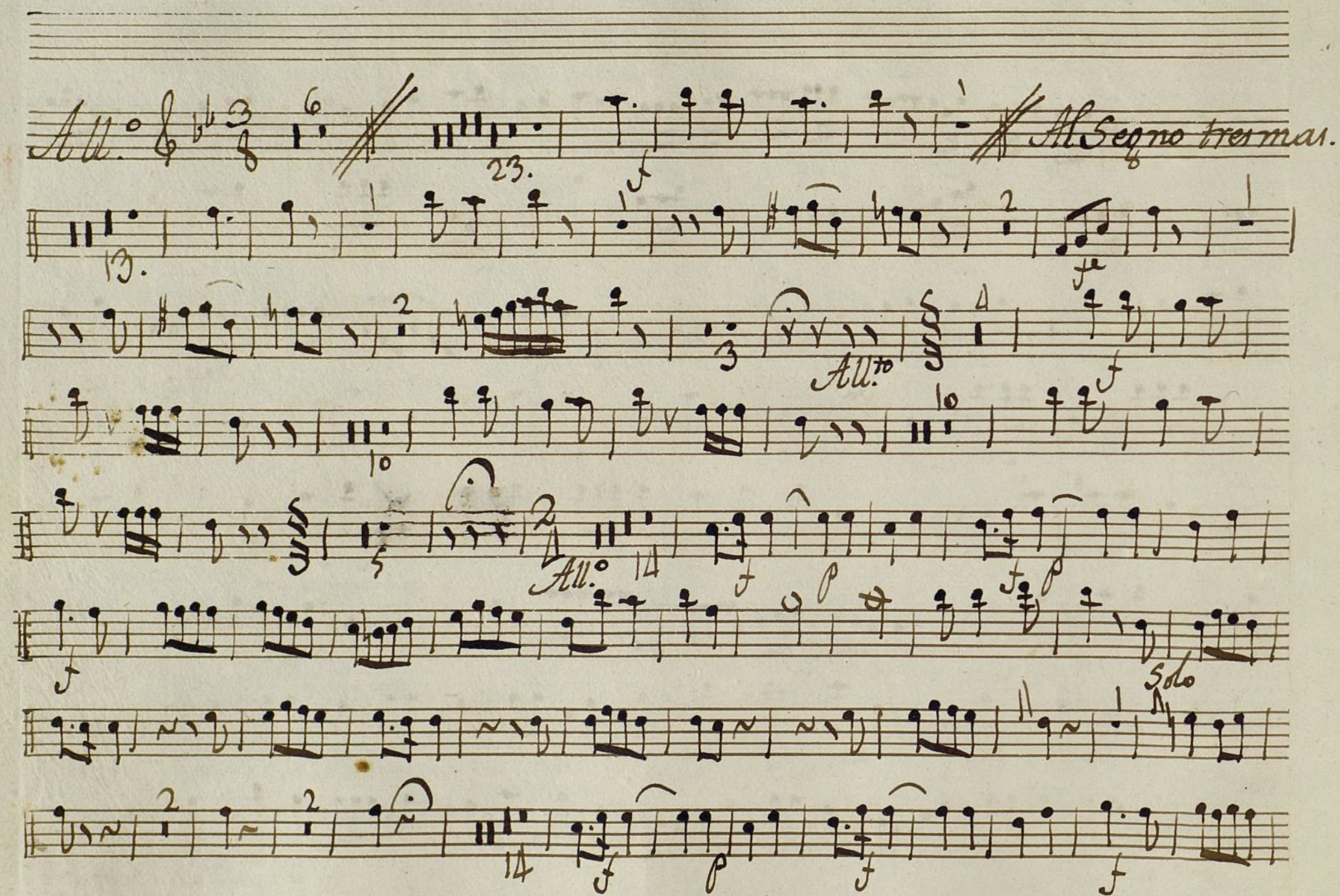
1200055527

Cboe 1.º Fon.ª Duo la Mujer impaciente.

Mus 95-17

All.º *fe* *Allegro* *Solo* *Solo* *fe* *fe* *fe* *fe* *fe* *Parola* *Allegro*

Handwritten musical score on eight staves. The notation includes various musical symbols such as notes, rests, and dynamic markings. The score begins with the tempo marking *All.^o* and the key signature of one sharp (F#). The first staff contains a measure with a '6' above it, followed by a double bar line and a measure with a '23.' below it. The second staff contains a measure with a '13.' below it. The third staff contains a measure with a '2' above it and a measure with a '3' below it. The fourth staff contains a measure with a '10' below it and a measure with a '10' below it. The fifth staff contains a measure with a '5' below it and a measure with a '14' below it. The sixth staff contains a measure with a '14' below it. The seventh staff contains a measure with a 'Solo' marking above it. The eighth staff contains a measure with a '14' below it. The score concludes with the tempo marking *Al Segno tre mas.*





Ayuntamiento de Madrid

1200055527

Oboe 2.^o Fon.^a a Duo La Mujer impaciente.

All.^o

Allegro

Solo

Solo

Solo

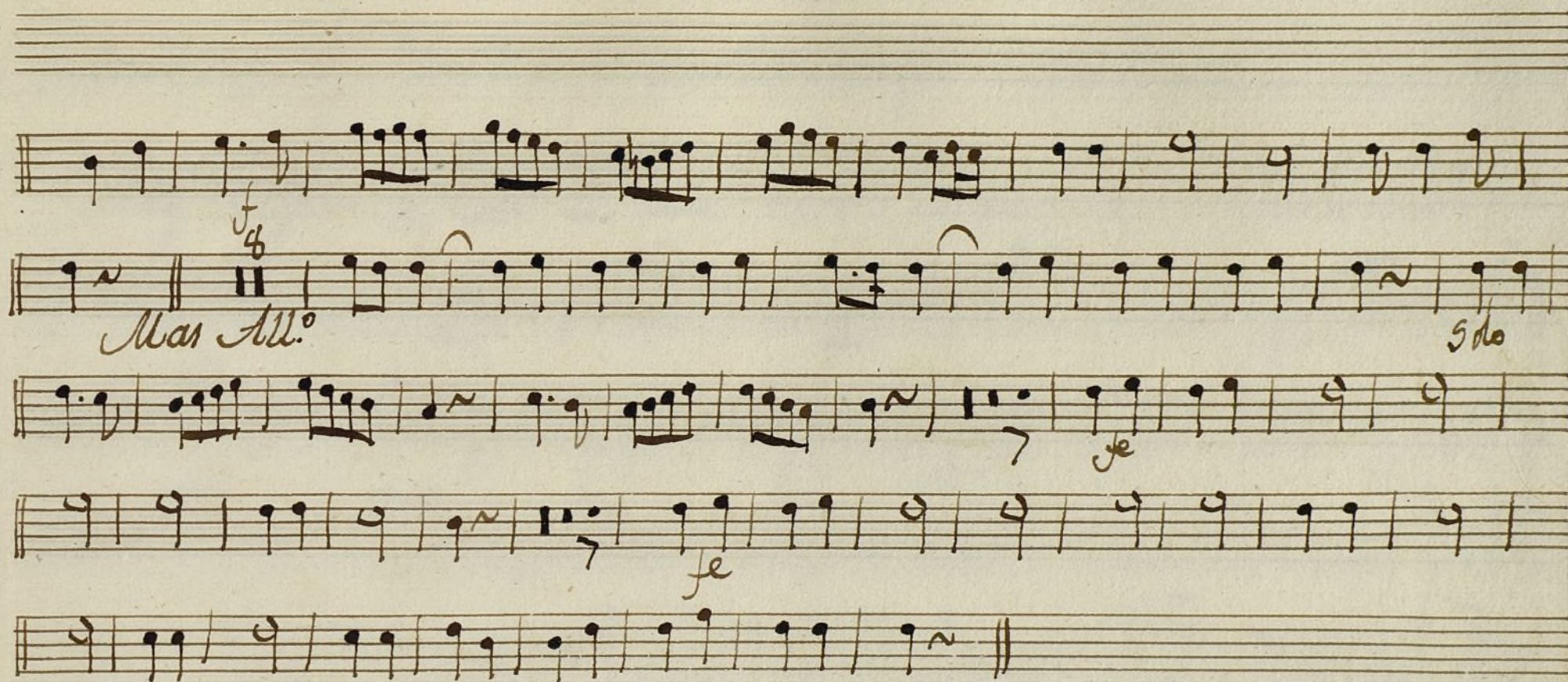
Solo

Solo

Solo

Allegro y Parola.

A handwritten musical score on aged paper, featuring ten staves of music. The notation is in brown ink. The first staff begins with the tempo marking 'All.' and a 3/8 time signature. A double bar line with a repeat sign follows. The second staff has a '23.' marking. The third staff has a '13' marking. The fourth staff has a '2' marking. The fifth staff has a '10' marking. The sixth staff has a '5' marking. The seventh staff has a '14' marking. The eighth staff has a 'solo' marking. The ninth staff has a '15' marking. The tenth staff has a '16' marking. The score includes various musical notations such as notes, rests, and dynamic markings like 'f' (forte) and 'p' (piano). The tempo changes from 'All.' to 'Al Segno' in the third staff, with the instruction 'trei mas.' (three measures) written below. The score is written in a cursive, handwritten style.



Ayuntamiento de Madrid

12 00055527

Clarinete 1.º Ton.ª a Duo la Mujer impaciente

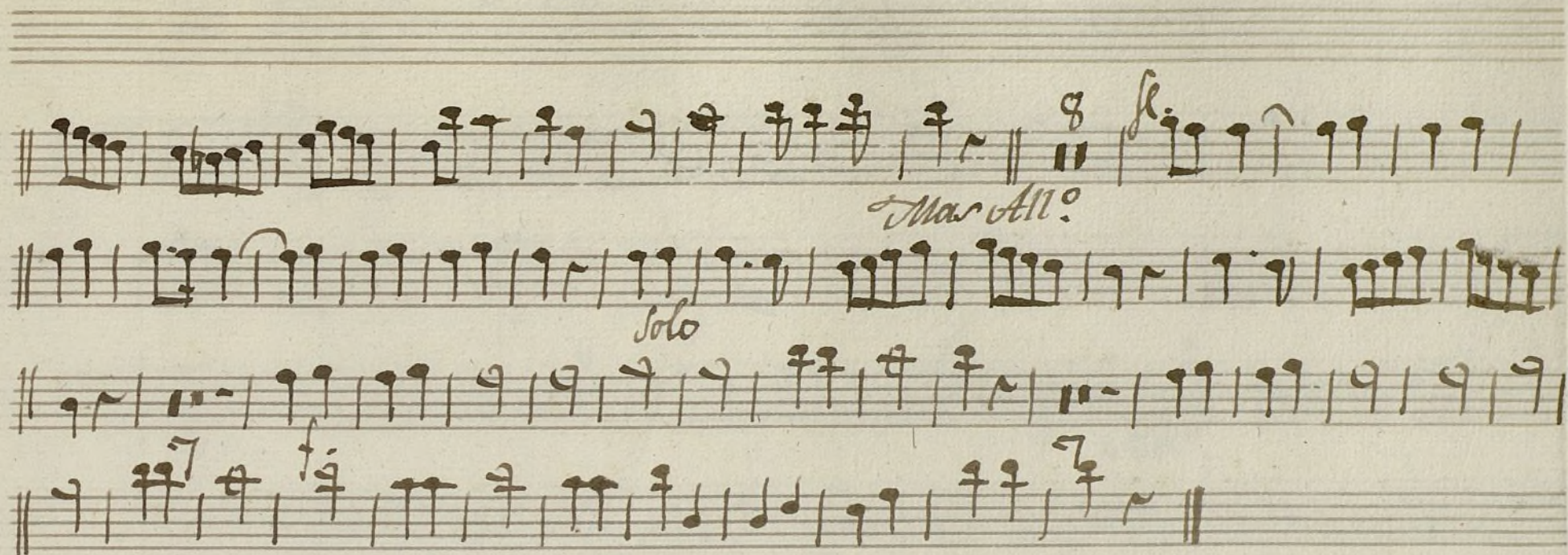
Mus 95-17

Allegro 2/4 *f.* *A* *Allegro* 6/8 *Allo.* *solo* *f.* *solo* *kr.* *kr.* *f.* *p.* *f.* *p.* *f.* *A* *Parola* *Allegro*

Alleg. Bb $\frac{3}{8}$ $\frac{6}{8}$ $\frac{23}{8}$ $f.$ *Allegro 3 mar.*

$\frac{13}{8}$ $\frac{2}{8}$ $\frac{4}{8}$ $\frac{3}{8}$ *All.^{to}* $\frac{10}{8}$ $\frac{10}{8}$ *Alor Par.*

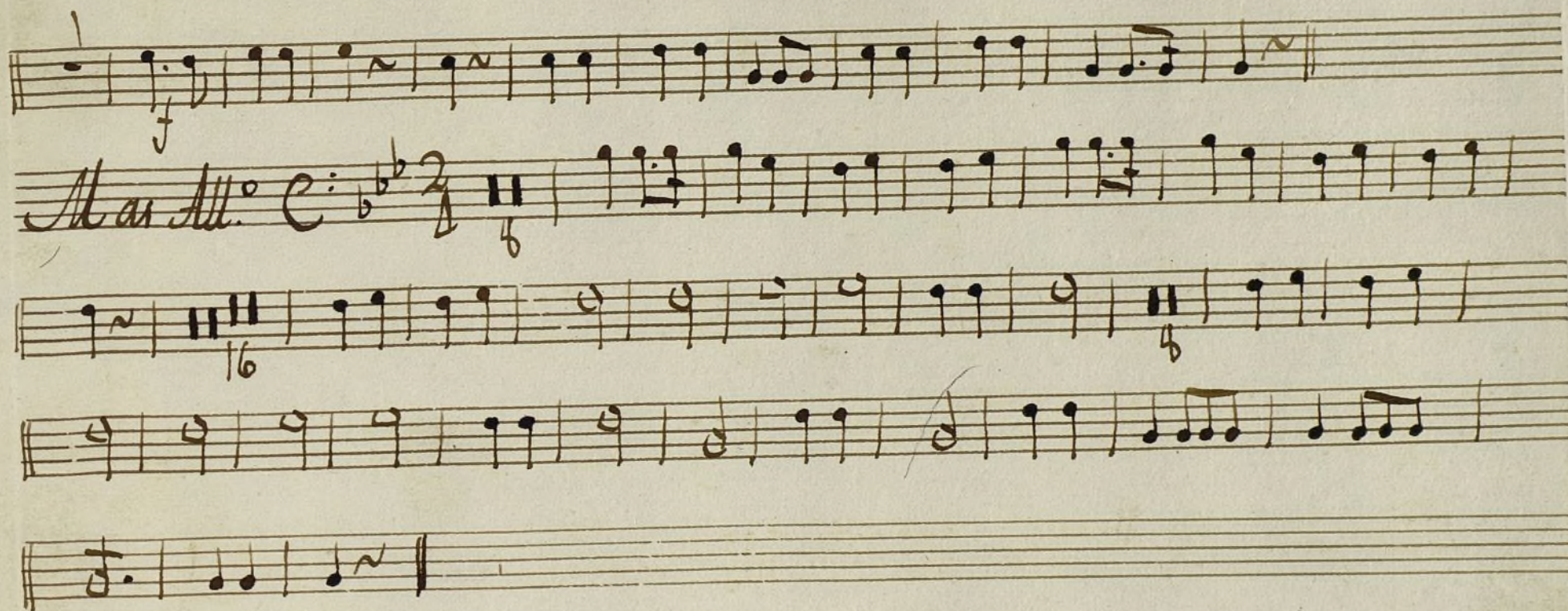
$\frac{5}{8}$ *All.^o* $\frac{14}{8}$ $\frac{14}{8}$ *solo*



Ayuntamiento de Madrid

12 000 55527

Handwritten musical score on eight staves. The notation includes various musical symbols such as notes, rests, and dynamic markings like *f* and *ff*. The score is divided into sections by double bar lines and includes tempo markings: *All.^o* (Allegro) and *Al Segno*. The key signature is one flat (B-flat). The time signature is 3/8. The score includes measures numbered 6, 23, 14, 19, and 14. The final section is marked *tres 8mas.* (three eighths).



Ayuntamiento de Madrid

1200055527

Trompá 2.^a Fon.^a a duo la Mujer impaciente.

All.^o *C* *2* *f*

Solo *f* *3* *f* *6* *Allegro* *6* *All.^o*

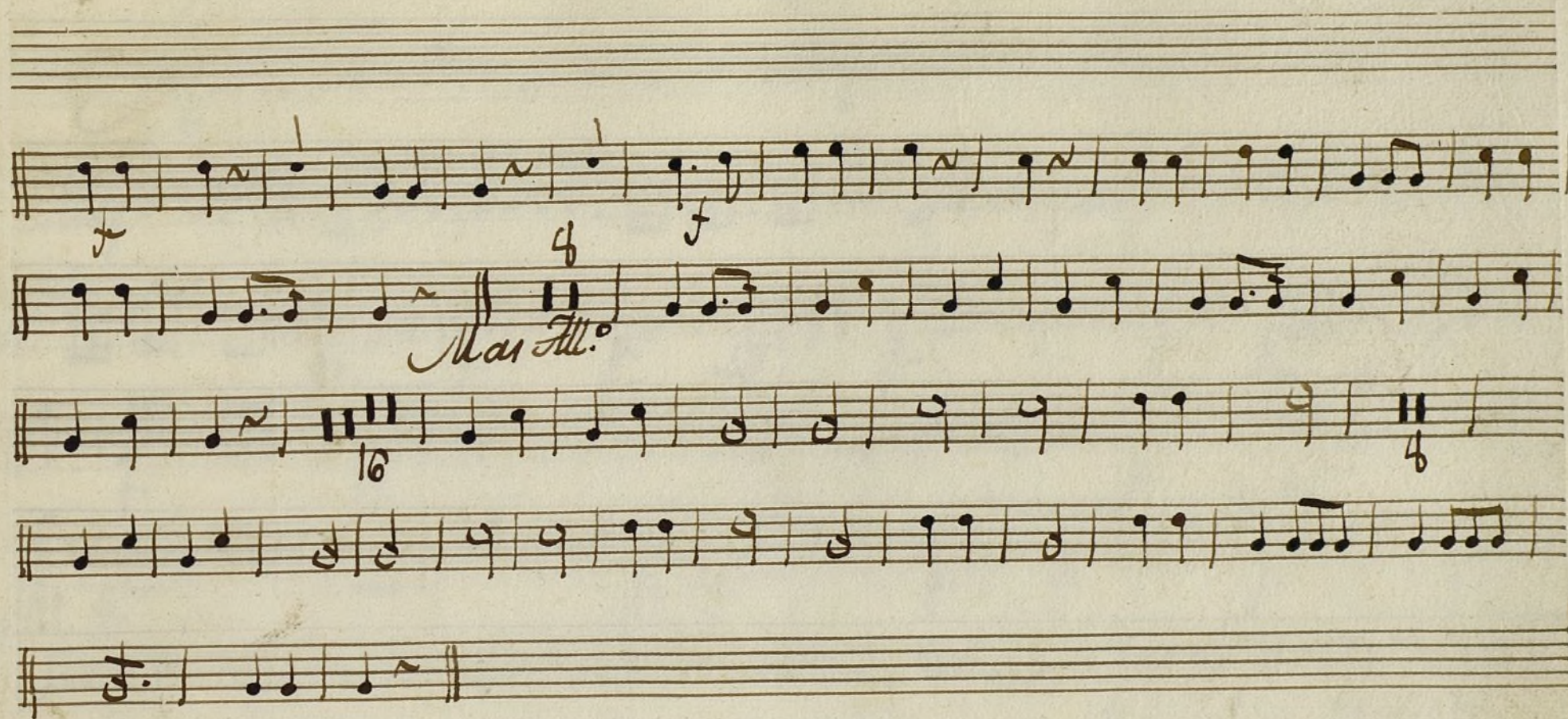
Solo *f* *2*

Solo *f* *p*

4 *f*

Allegro y Parda.

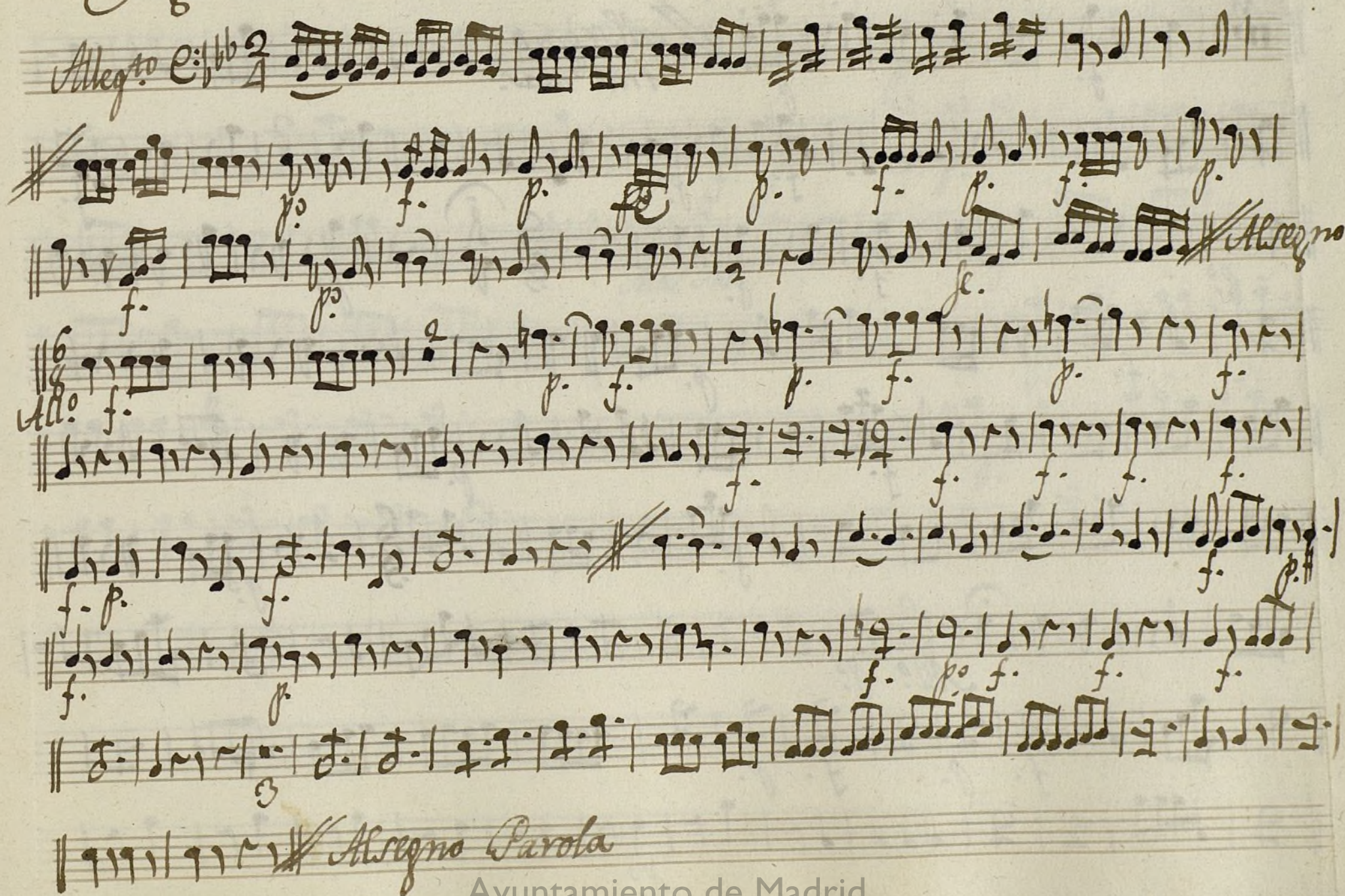
Handwritten musical score for a piece titled "Allegro". The score is written on ten staves. The first staff begins with the tempo marking "Allegro" and a key signature of one flat (B-flat). The music is in 3/8 time. The first staff also features a "6" above the first measure and a "23." below the first measure. The second staff has a "6" above the first measure and a "4" below the first measure. The third staff has a "3" below the first measure and a "6" above the first measure. The fourth staff has a "3" below the first measure and a "6" above the first measure. The fifth staff has a "3" below the first measure and a "6" above the first measure. The sixth staff has a "3" below the first measure and a "6" above the first measure. The seventh staff has a "3" below the first measure and a "6" above the first measure. The eighth staff has a "3" below the first measure and a "6" above the first measure. The ninth staff has a "3" below the first measure and a "6" above the first measure. The tenth staff has a "3" below the first measure and a "6" above the first measure. The score includes various musical notations such as notes, rests, and bar lines. The handwriting is in brown ink on aged paper.



Ayuntamiento de Madrid

12 000 55527

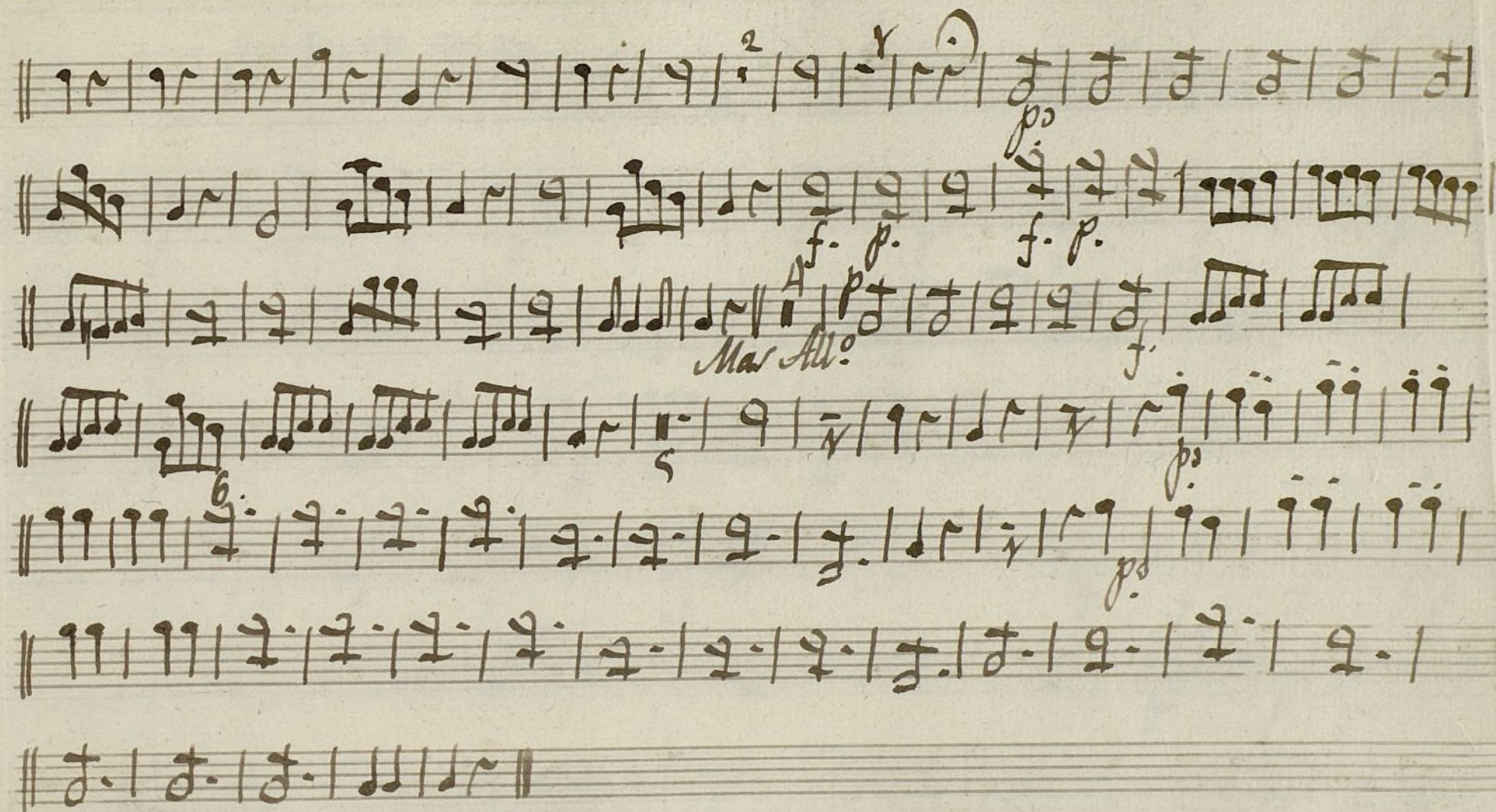
Sagot. Ton.^a a Duo La Mujer impaciente

Allegro 

Allegro

Allegro Parola

Handwritten musical score for a piece, likely a piano or organ work. The score is written on ten staves. The first staff begins with the tempo marking "Allegro" and a 3/8 time signature. The second staff has a tempo change to "Allegro molto" and a 2/4 time signature. The score includes various musical notations such as notes, rests, and dynamic markings like "p." (piano) and "f." (forte). The handwriting is in a cursive style, typical of 18th or 19th-century manuscripts.



Ayuntamiento de Madrid

1200055527

Bajo Fon.^a a Duo La Mujer impaciente.

Alleg.^{ro} C: 2/4

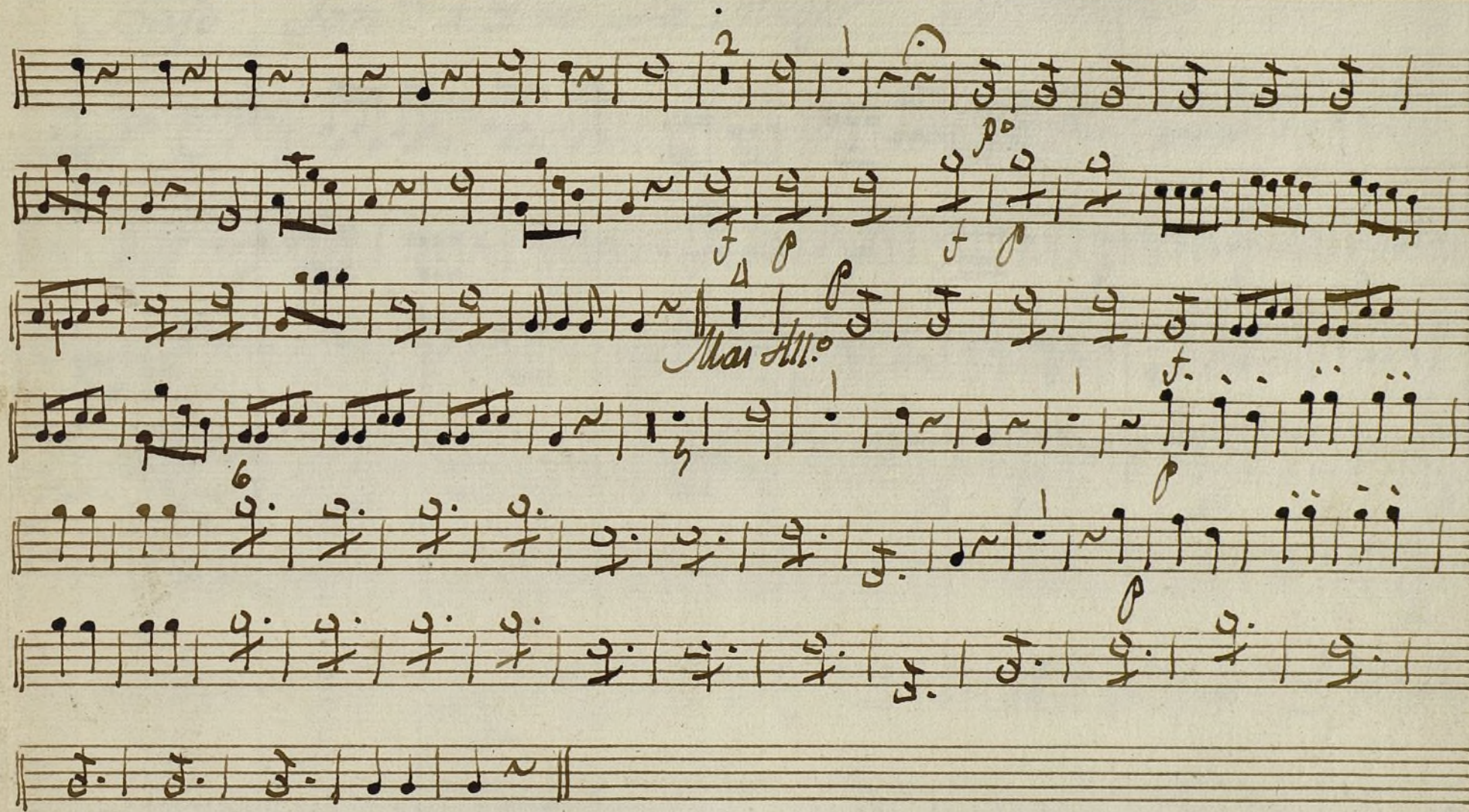
All.^o 6/8

Al Segno.

Parola
Al Segno

crec. *f*

Handwritten musical score on ten staves. The notation includes various musical symbols such as notes, rests, and dynamic markings like *Allegro*, *Allegro*, *Allegro*, *Allegro*, *Allegro*, *Allegro*, *Allegro*, *Allegro*, *Allegro*, and *Allegro*. The score is written in a cursive style, typical of 18th or 19th-century manuscript notation. The first staff begins with a treble clef and a 3/4 time signature. The second staff features a section marked *Allegro* and *Tres mal.*. The third staff has a section marked *Allegro*. The fourth staff has a section marked *Allegro*. The fifth staff has a section marked *Allegro*. The sixth staff has a section marked *Allegro*. The seventh staff has a section marked *Allegro*. The eighth staff has a section marked *Allegro*. The ninth staff has a section marked *Allegro*. The tenth staff has a section marked *Allegro*.



Ayuntamiento de Madrid

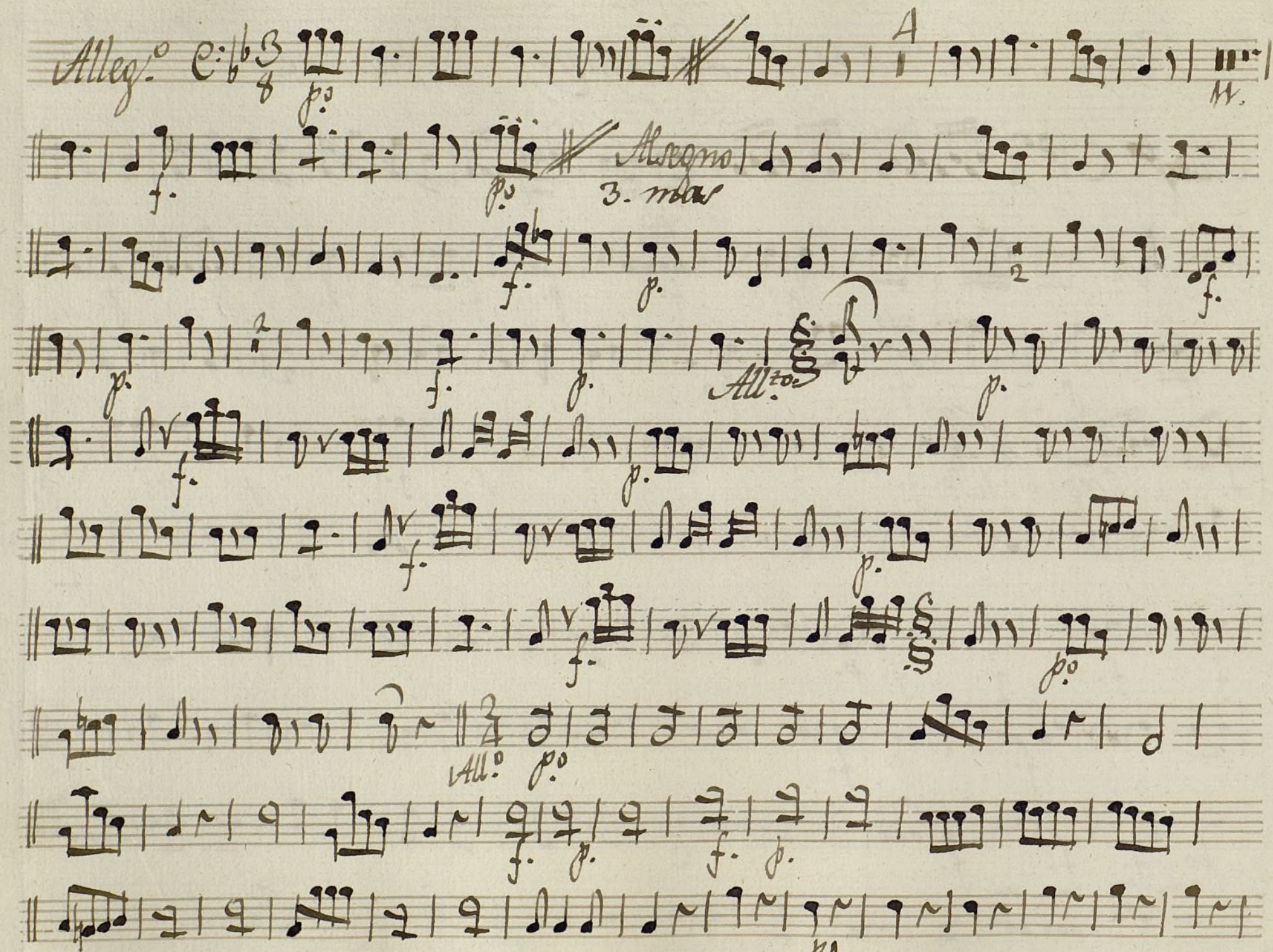
1200055527

Bafo Ton.^a a Duo La Mujer impaciente

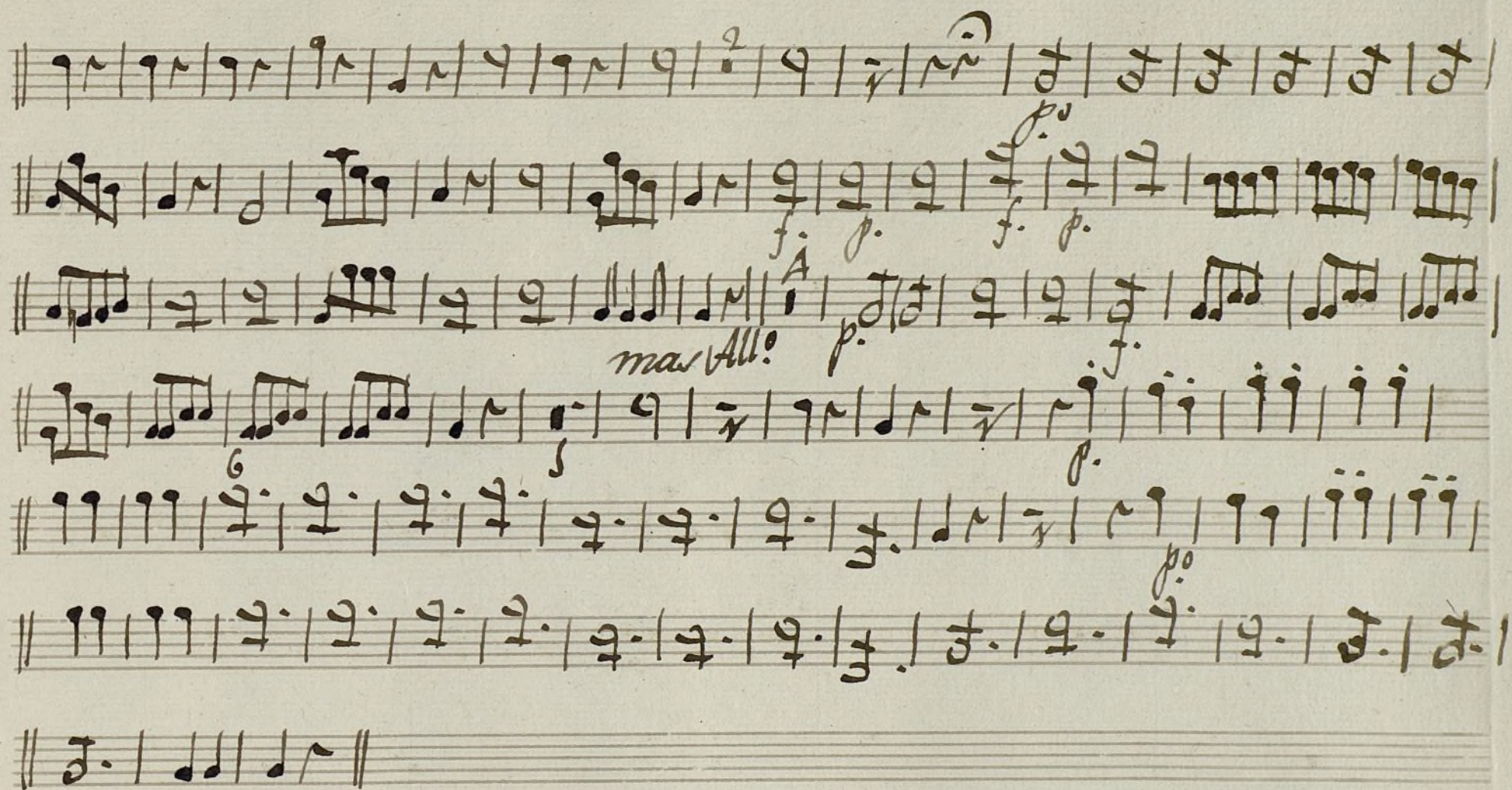
Allegro $\text{C} \frac{2}{4}$

Allegro All.^o

Allegro Parola



Ayuntamiento de Madrid



Ayuntamiento de Madrid

1200055527