

La Pica Rodrigo;

Conadilla a Solo

Los Agradecimientos

~~de la Pica Rodrigo y los Agradecimientos~~

de la Rodrigo;

de Empezar temporada;

Del S.^r Esteve: 1788.

Allegro

Bricias

pues soy tan afor tunada, dadmeal

dadmeal

gracias ———— pues soy tan afor tu nada afor tu

nada ———— gl. adonde esta ba pre ta da oy es

soy en pro pie dad — dad me al bricias ———— gl. ya es

soy en pro pie dad — en pro pie dad ————

pero Co ra

zon — que con pensacion — a Ma drid da rás a —

a Ma — drid darás

por que su elección — de Cuarta el Blason — te quise oír

par — te qui so oírgar

que fe li — dad que fe li — ci — dad

Segui

Allegro

mas q.ⁿ en tal de

U rio

mar q.ⁿ

me mete a

ra

me mete a ora si el agra de ci
de jemos ei 70 y vivamoral

mien 70 — Ya no el de Mo da — si el agra de ci

U — ro — del siglo nuestro — y vivamoral

mien-to ay — Cari ñito ya no es de moda —

U-so ay — Cari ñito del siglo nuestro —

Peri^{do}

se

A si mi vanidad me hablo aquel

Allegro

Peri^{do}

dia en que llegué a ver la dicha mia

Y en ~~tre a~~ Cientos perplexos me dictò, Unos con sesos

Alleg^{ro}

oid los pues y el Juicio este advertido

q. Irino coen vn todo es su sentido

Alleg^{ro} es escuchad

escuchad lo que pienso en mi des

irino y lo que hacer de termino

Str. po *Str.*

Cre yendo a la Vanidad Cre yendo a la Vanidad

Str. *Str.*

dad escuchad escuchad

chad;

Coplas

$\frac{2}{4}$

Alleg.^{ro} Brillante

$\frac{2}{4}$

Handwritten musical score on aged paper, featuring three systems of staves. The lyrics are in Spanish and appear to be a satirical or humorous text. The notation includes various musical symbols such as notes, rests, and dynamic markings like *pp*.

si en to
ra ca
en fin

do no me dan gusto
 so a una Compañera
 si lo ero ser util

sea el Autor Damay La
 mas a plauso q. ami
 dire que no e fir

lan
 dan
 mar

por q. un theatro se les pierda fingi
 des de entonces ser prometo ruene
 si tres meses de lizencia en ca

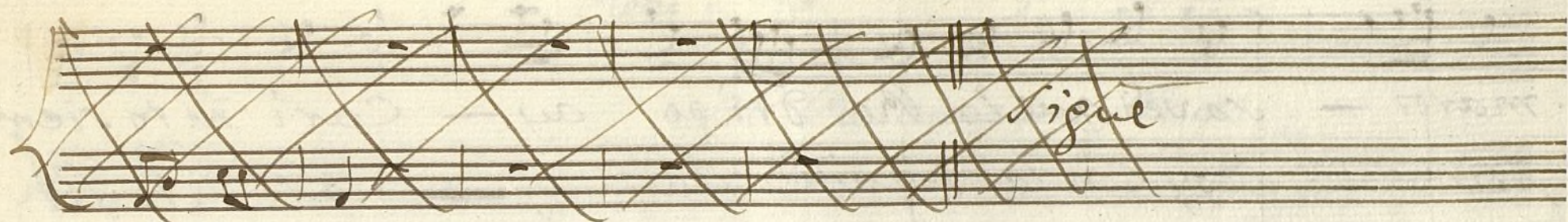
pp

re una enfermedad
 mi ga Capri tal
 da año no me dan

Allegro
 dos veces

rien una función de Empeño
 Culpare a la tona diña

Un pa
Cuando



Segue
Allegro { *3* *Ya ricos rizados mios — ya ricos rizados*

mios — bur las de san do *vier las de*
ya ora que

san do *saved que la Pro dri go — siempre a de a*
ri dos *do con la segui dilla — final ca*

po

maros — saved que la Ro drigo ay — Cari ñito siem
pricho — doy con la segui di Has ay — Cari ñito fin

me ade amaros —
al Capricho — *Allegro*

Segui.
Allegro { 3
4

2

Peri^{do}

el Relampago y Rayo

All.^o

en noche oscura

al triste Caminante

palma a sombra

y todo le deslumbró

Como Prima

dejando de sus Gras

tan a sus pa do. — que tiembla y se ro zede atras los
 pa sos a tras los pa — — — — —
 — — — — — los a tras los pa sos — — — — —
 — — — — —

tan a sus ta^{do} que tiembla y retrocede que
siempre que canto el temor me aco^{ta} guarda el

atrás los pasos a - - -
por si no agrado por - - -

— atrás los pasos —
— si no agrado —

an' amia la vi ta de la Cor re ex cel sa

de pe li gro el sus to

Con fun de ya terra

pe ro Co ra zon mio

dime de que Velas

dime de que Vele- - las::

Cuanto tanto de bemos a sus Clemen- - cias -

~~Va ri~~ Somos qual Nave que a Zorael viento -

yei pero en a de lante lo propio se a lo propio
quiera Dios q^d go salga bien de estos tiempos bien de estos

re a

Viesgos

lo propio sea

bien de ellos Viesgos

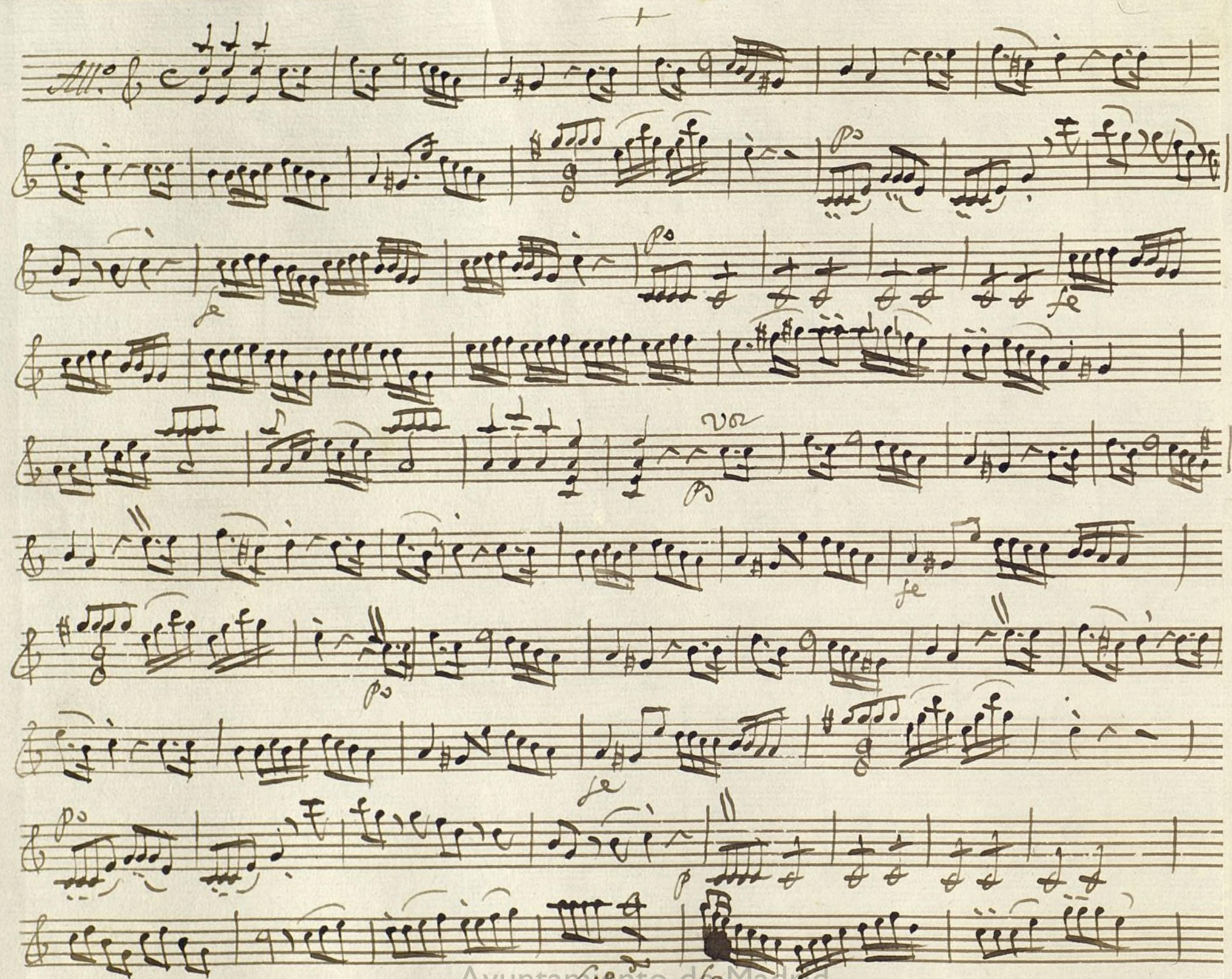
Allegro

Ayuntamiento de Madrid

Violin Primero

Conadilla a solo

Los Agradecimientos de la Rodrigo;



Handwritten musical score on seven staves. The notation includes various musical symbols such as notes, rests, and dynamic markings. The third staff begins with the tempo marking *Alleg. vivo*. The seventh staff ends with the tempo marking *Adagio*.

Handwritten musical score on two staves. The first staff begins with the tempo marking *Adagio* and the lyrics *Asimi vanidad*. The second staff ends with the tempo marking *Volte*.

Handwritten musical score for a piano piece. The first system consists of two staves. The upper staff is in treble clef with a key signature of two sharps (F# and C#) and a common time signature (C). It contains a series of eighth and sixteenth notes. The lower staff is in bass clef with the same key signature and time signature, featuring a few notes and rests. The tempo marking "Allegretto" is written above the second measure of the lower staff.

Handwritten musical score for a piano piece. The first system consists of two staves. The upper staff is in treble clef with a key signature of two sharps (F# and C#) and a common time signature (C). It contains a series of eighth and sixteenth notes. The lower staff is in bass clef with the same key signature and time signature, featuring a few notes and rests. The tempo marking "Allegretto" is written above the second measure of the lower staff.

Handwritten musical score for a piano piece. The first system consists of two staves. The upper staff is in treble clef with a key signature of two sharps (F# and C#) and a common time signature (C). It contains a series of eighth and sixteenth notes. The lower staff is in bass clef with the same key signature and time signature, featuring a few notes and rests. The tempo marking "Allegretto" is written above the second measure of the lower staff.

Handwritten musical score on eight staves. The notation includes various musical symbols such as notes, rests, and dynamic markings. Key annotations include:

- vo* (voice) at the top of the first staff.
- le* (likely *le* or *le*) below the third staff.
- dos vezes* (two times) above the fourth staff.
- Allegro* (Allegro) written across the fourth staff.
- Allegro* (Allegro) written above the fifth staff.
- 3* (triplets) above the fifth and sixth staves.
- 3* (triplets) above the sixth staff.
- 3* (triplets) above the seventh staff.
- 3* (triplets) above the eighth staff.

Volti

Segui: Allegro $\frac{3}{4}$

le vor

Peri:

All:

le

Como Prima

ff *ff* *ff*

A handwritten musical score on ten staves, written in brown ink on aged paper. The notation includes various musical symbols such as clefs, key signatures (two sharps), time signatures, and dynamic markings like *se*, *ff*, *p*, and *sfz*. The score features complex rhythmic patterns, including many beamed sixteenth and thirty-second notes, and some triplets. There are several double bar lines and repeat signs throughout the piece. The word *Allegro* is written in a cursive hand at the bottom right of the page.

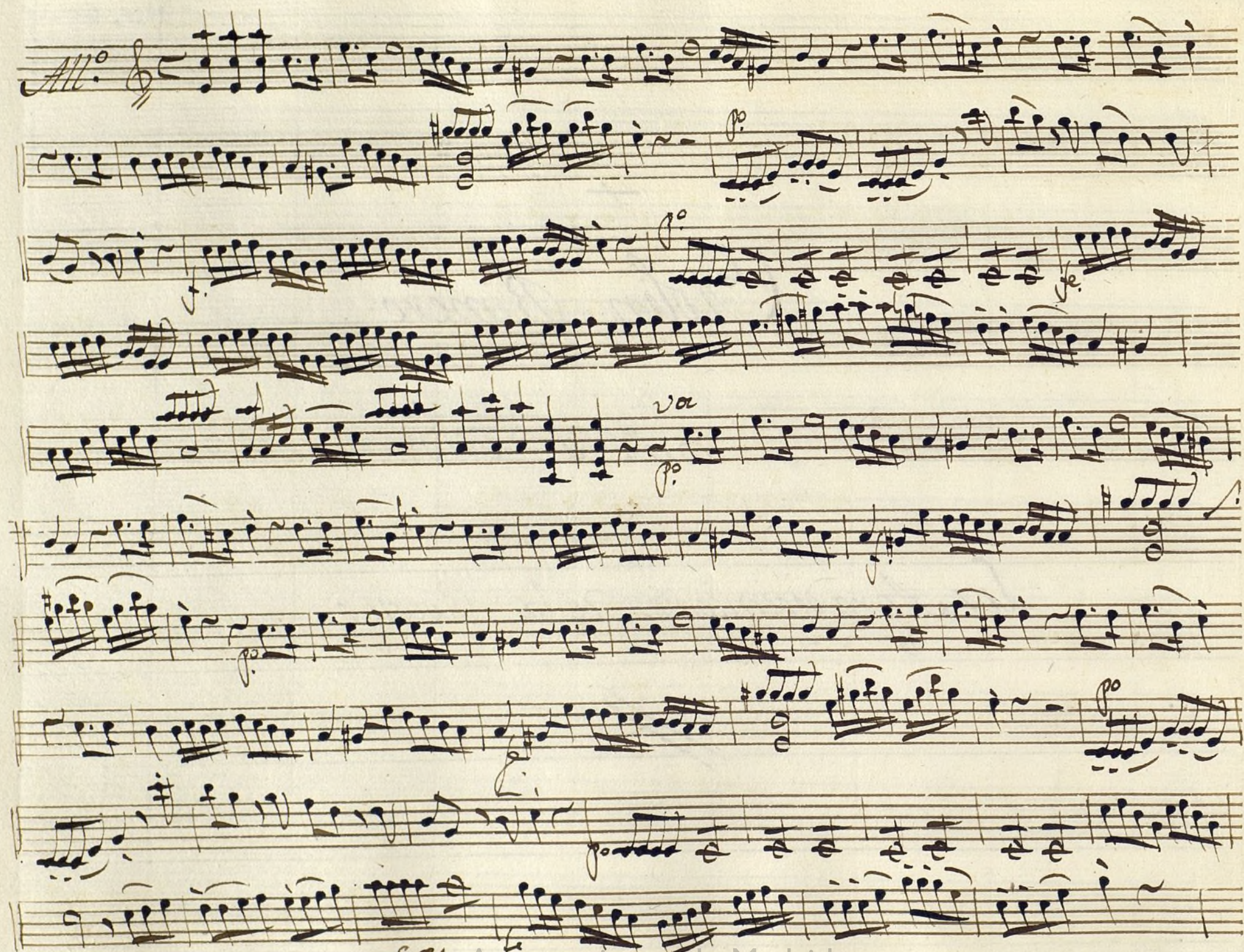
+

Violin Primero.

For.^a a solo;

Los Agradecimientos de la Rodrigo.

//



crei. do

ff

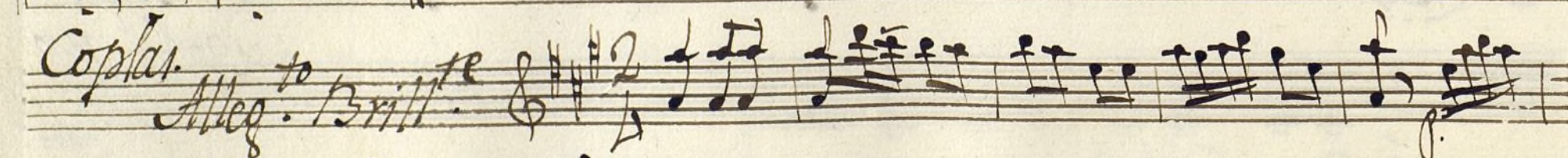
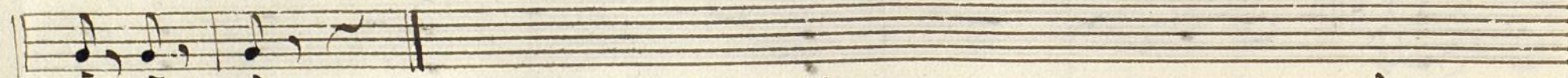
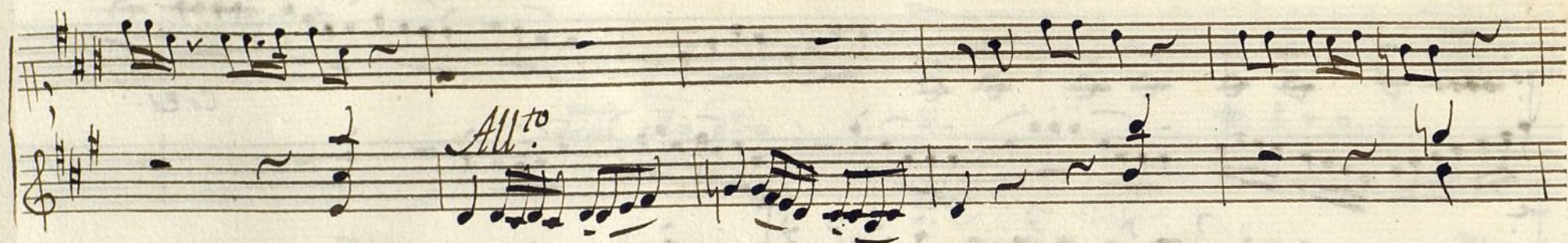
All. vivo:

vor

Allegro.

Rez. do

Volte pro



voz

dos veces

All^{to} 3 voz

Al Segno ~~*Allegro*~~

aites Carr.

Volvi p^{to}

segund.
All. 3/4

p. *voz*
Recitado.

All.

3 *Corno Prima*
p.

p. *p.* *p.* *p.*

Ayuntamiento de Madrid

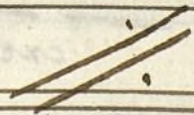
A handwritten musical score on ten staves. The notation is in a single system, likely for a piano or similar instrument. The key signature is one sharp (F#), and the time signature is 3/4. The music features a variety of rhythmic patterns, including eighth and sixteenth notes, and rests. There are several dynamic markings, including *p* (piano) and *pp* (pianissimo). The score concludes with the instruction *Al Segno;* written in a cursive hand. The paper is aged and shows some staining.

+

Violin Secundo.

Fon.^a à solo.

Los Agradecimientos de la Rodrigo;



Handwritten musical score on ten staves. The notation includes various musical symbols such as clefs, notes, rests, and dynamic markings. The score is written in a historical style, likely from the 18th or 19th century.

Key markings and annotations include:

- All.^o* (Allegro) at the beginning.
- vor S. p.* (voice solo, piano) in the fifth staff.
- a los Parr.* (to the Parrs) in the sixth staff.
- cres. p.* (crescendo piano) in the seventh staff.
- cres.* (crescendo) in the eighth staff.
- Segue:* at the end of the piece.

The watermark "Ayuntamiento de Madrid" is visible at the bottom center of the page.

All^{to} vivo.

Al segno.

Reci.

All^{to}

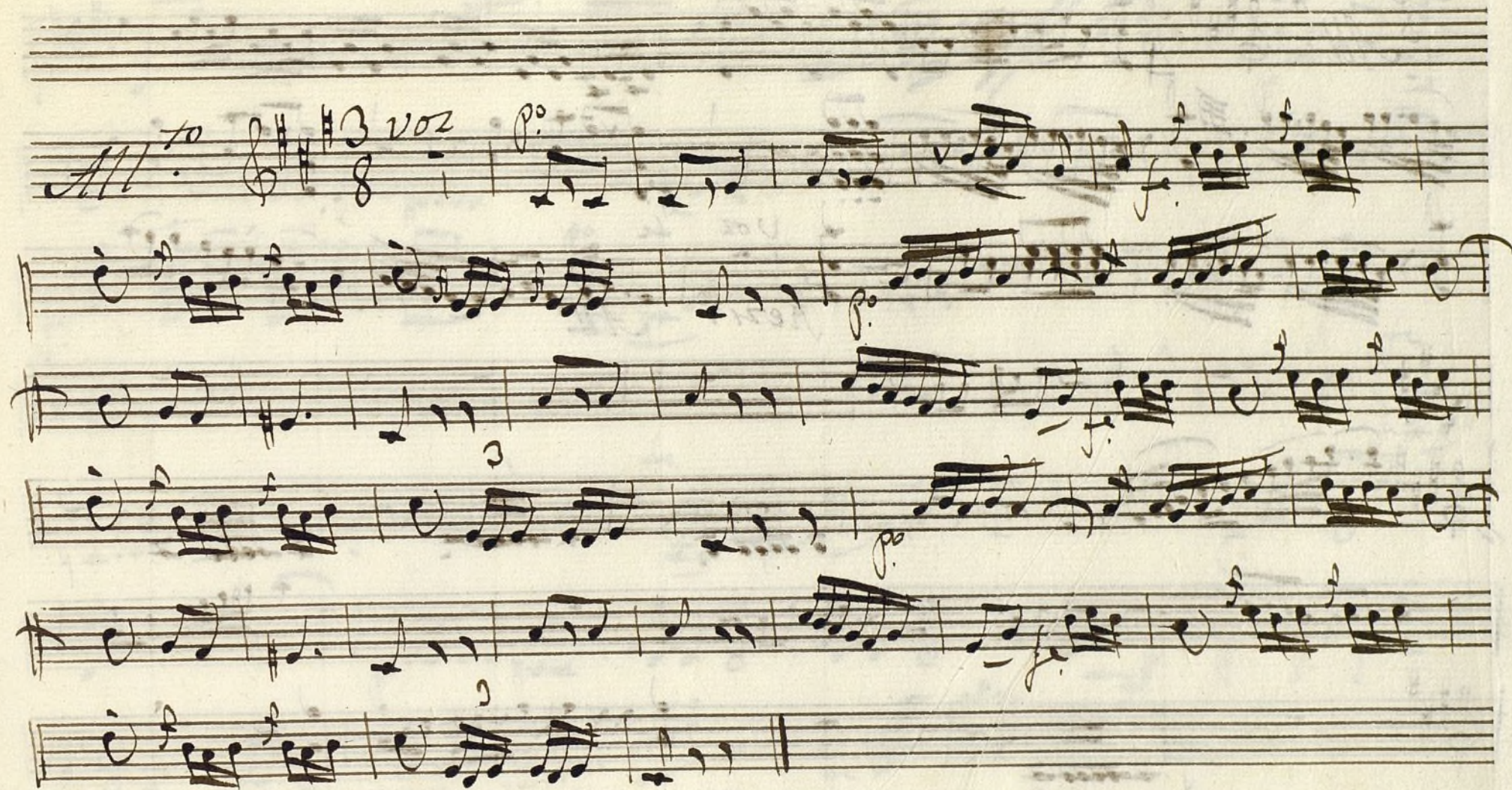
V. p^{to}

Alleg.^{to} 2^{da} *p^o* 3 *p^o* 3 *p^o* 3

The first system consists of three staves. The top staff is in treble clef with a 2/4 time signature and a key signature of one sharp (F#). It begins with the tempo marking 'Alleg.^{to}' and the dynamic '2^{da} p^o'. It contains several measures of music, including a triplet of eighth notes marked with a '3' and a 'p^o' dynamic. The middle and bottom staves are in bass clef and provide accompaniment for the top staff, with some measures containing doublets marked with a '2'.

Coplas: *Alleg.^{to} Brillante.* 2 *p^o* *f* *voz* *p^o* *f* *dos veces* *Alleg.^{ro}*

The second system consists of five staves. The top staff is in treble clef with a 2/4 time signature and a key signature of one sharp (F#). It begins with the tempo marking 'Alleg.^{to} Brillante.' and the dynamic '2^{da} p^o'. It contains several measures of music, including a triplet of eighth notes marked with a '3' and a 'p^o' dynamic. The middle and bottom staves are in bass clef and provide accompaniment for the top staff, with some measures containing doublets marked with a '2'. The system concludes with the marking 'Alleg.^{ro}' and a double bar line.



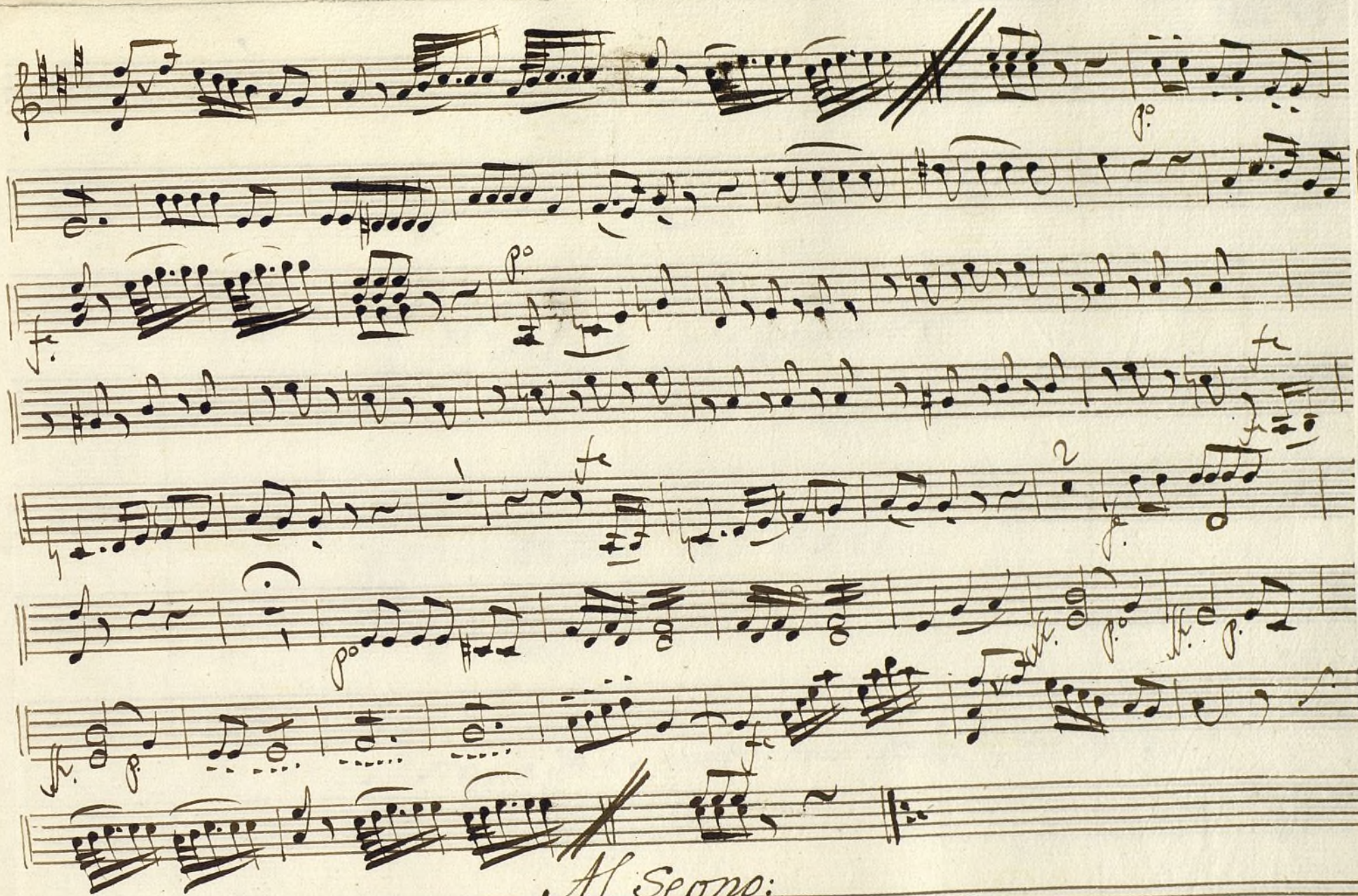
4.

Seq.^o
All.^o 3/4

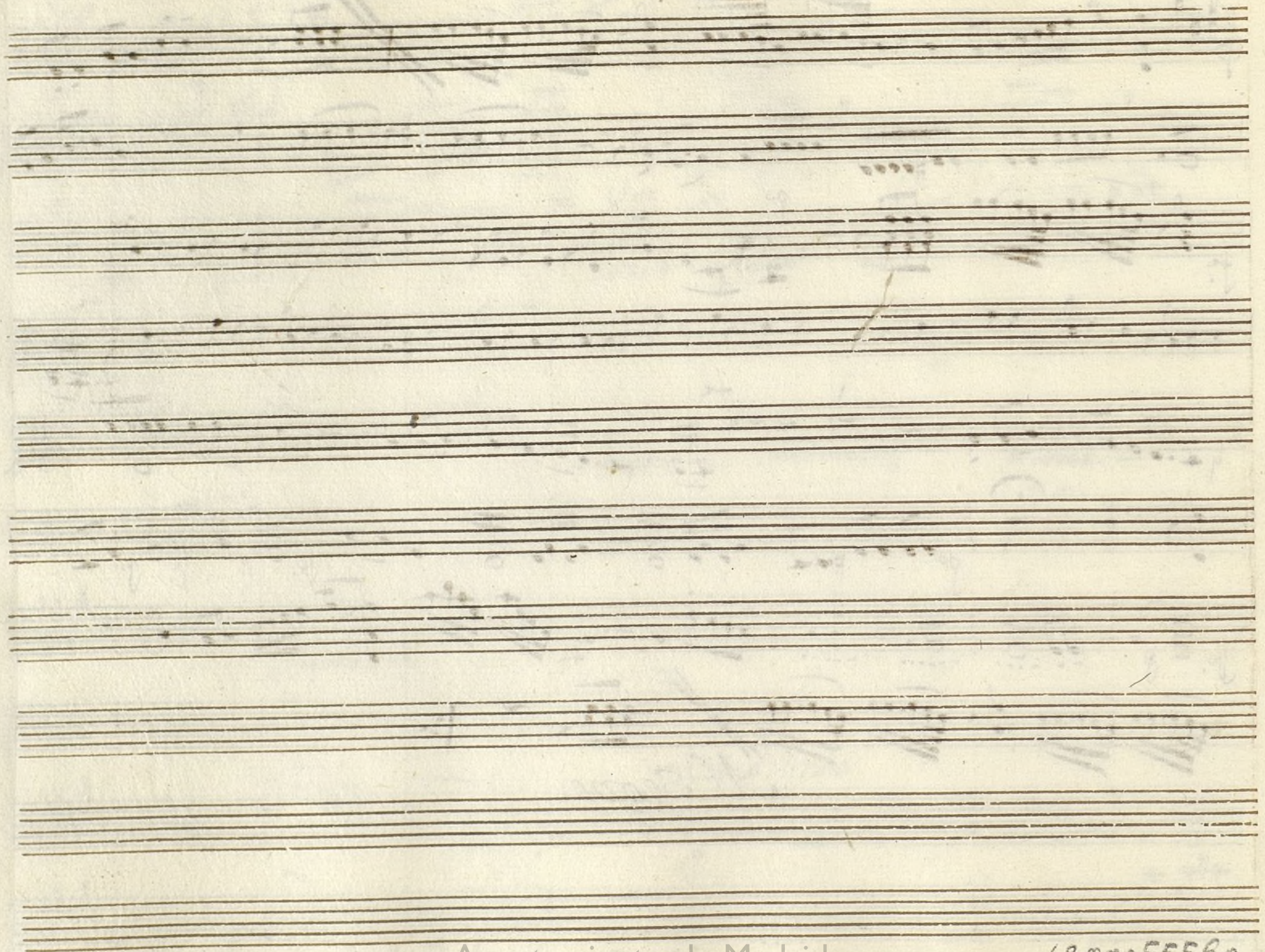
Voz
Rezi. *All.^o*

3
Como Prima:

Ayuntamiento de Madrid



Al Segno:

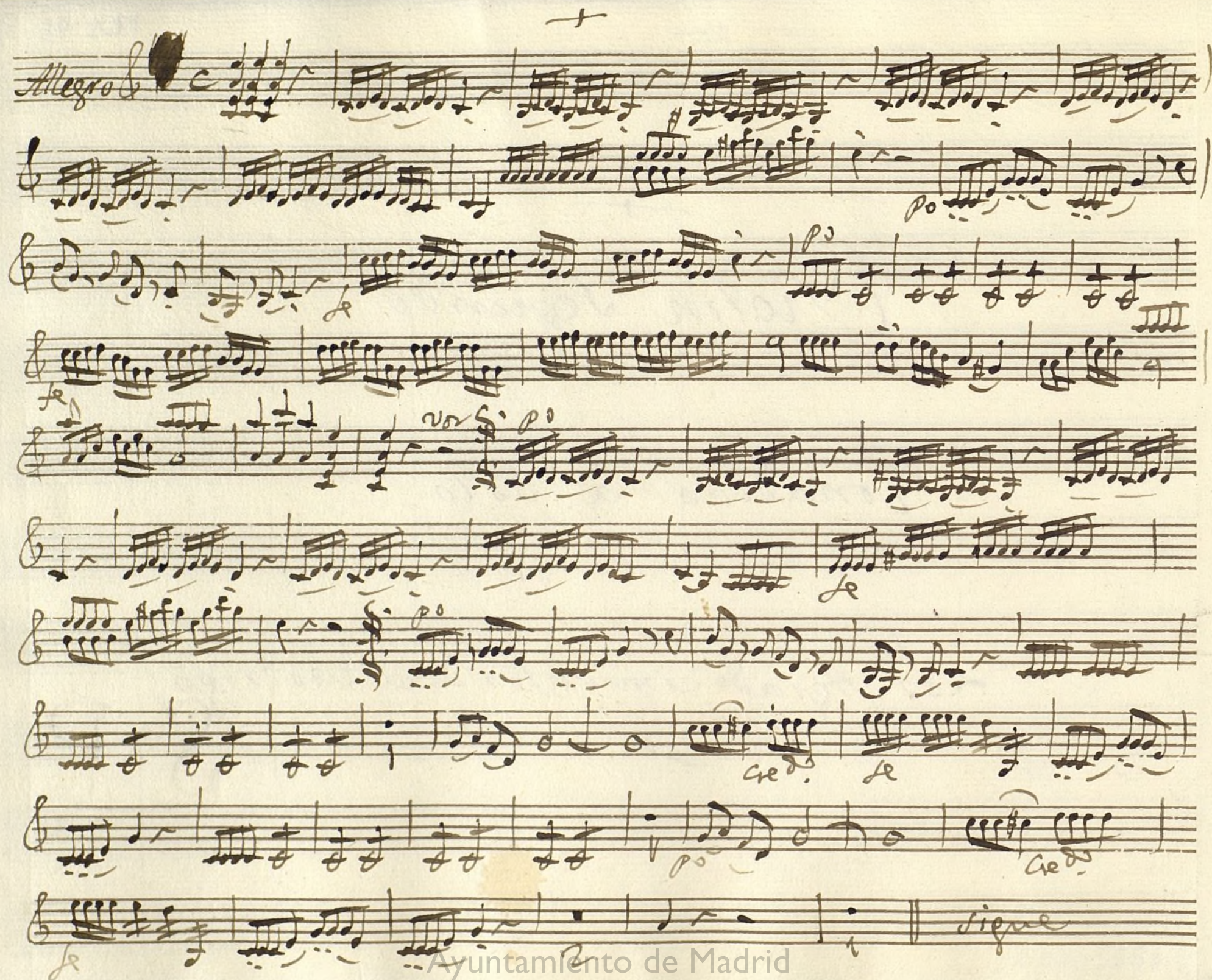


Violin Segundo

Conadilla à Solo;

Los Agradecimientos de la Rodrigo;

Handwritten musical score on ten staves, beginning with the tempo marking *Allegro*. The notation includes various rhythmic values, including sixteenth and thirty-second notes, and rests. Dynamic markings such as *p* (piano), *pp* (pianissimo), *cr.* (crescendo), and *le* (forte) are present. The score concludes with the word *segue* written at the end of the final staff.



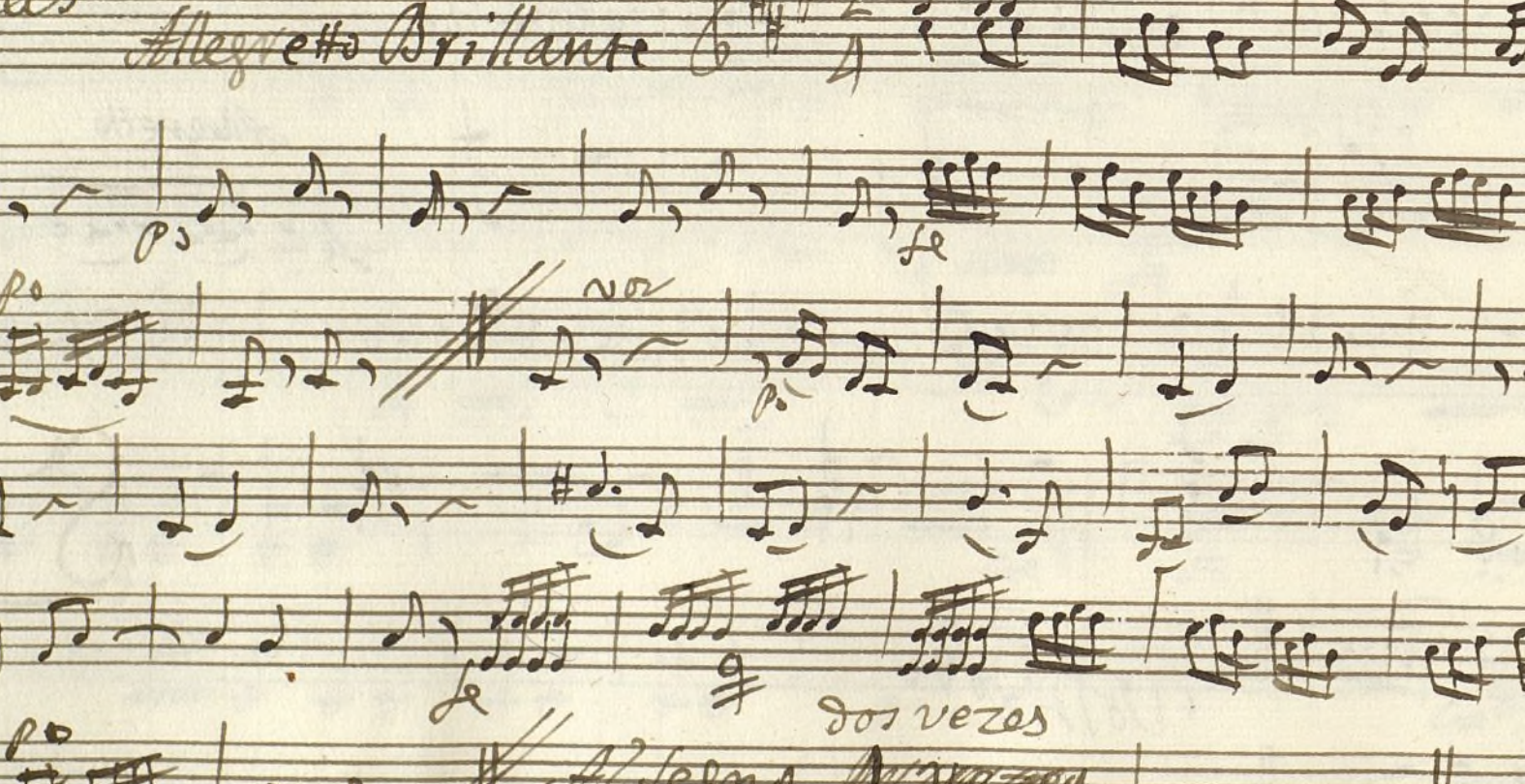
Allegretto Vivo 3/8 *vo* *yo*

Allegretto *Peri.* *vo*

Allegretto

Vol. 10

Handwritten musical score for three staves in G major, 2/4 time, marked "Alleg." The notation includes various musical symbols such as notes, rests, and dynamic markings like *pp* and *ff*.

Coplas *Allegretto Brillante* 8/4 



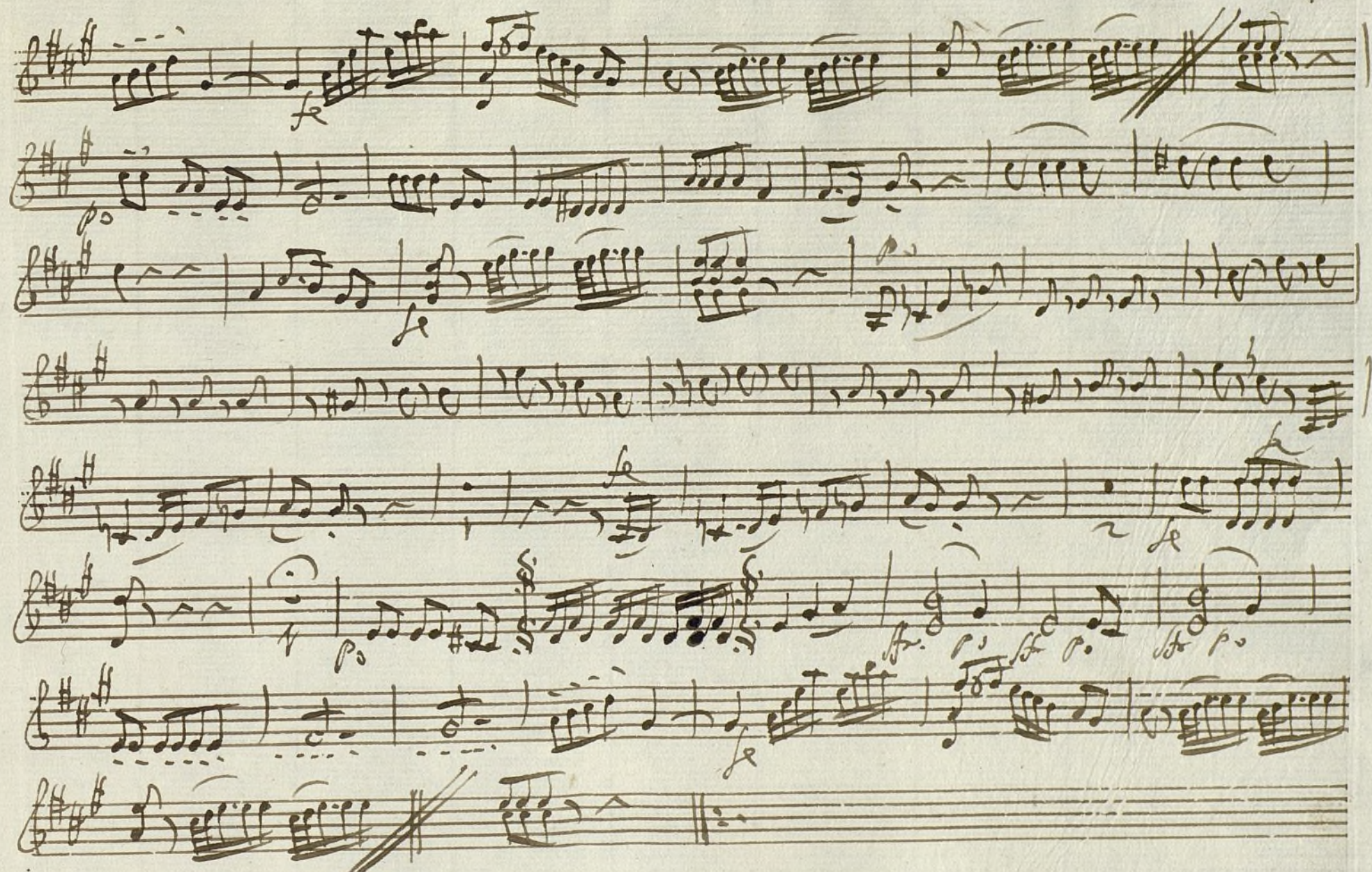
Voti

Segui! *Allegro* 3/4

Adagio *Allegro*

Como Prima

Ayuntamiento de Madrid



Allegro

Ayuntamiento de Madrid

1200055560

Oboe Primero;

Nos 95-4

Conadilla à solo; Los Agradecimientos de la Rodrigo;

Alauta.

Allegro & C

Handwritten musical score for Oboe Primero. The score is written on a single staff with a treble clef and a common time signature (C). The notation is highly complex, featuring numerous beamed sixteenth and thirty-second notes, as well as rests and dynamic markings such as 'p' (piano) and 'f' (forte). The score is divided into measures by vertical bar lines. There are several 'solo' markings above the staff, indicating sections where the instrument plays alone. The overall style is that of a handwritten manuscript, with some ink bleed-through from the reverse side visible.

Seguir y Rezitado Raza //

Allegro No. 8 G major 2/4

Coplas Allegretto G major 2/4

Segui: pace

Segui! oboe *Allegro* $\text{F}\sharp\text{F}\sharp$ 3/4

Adagio 15 4 11

Solo 2 *tenu* 10 11 2

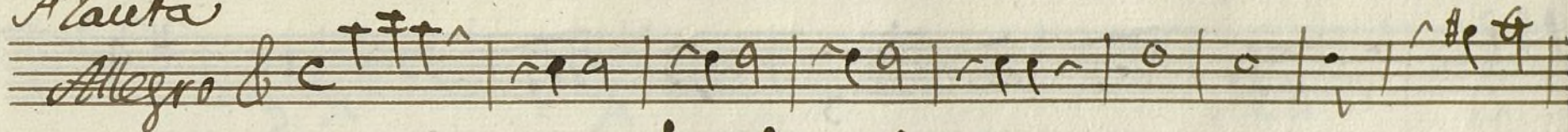
Allegro

Oboe Segundo

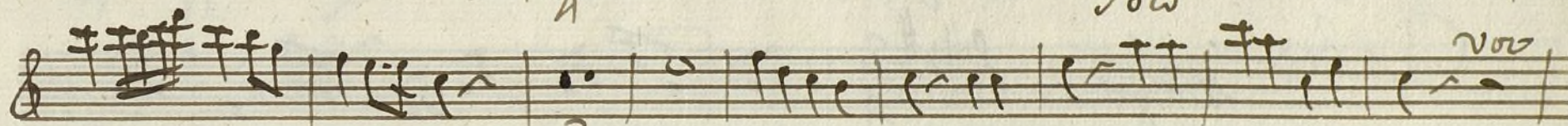
Nº 95-4

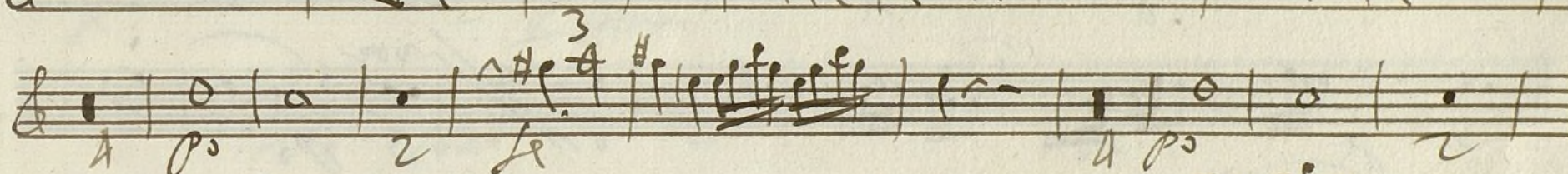
Conadilla à solo; Los Agradecimientos de la Rodrigo;

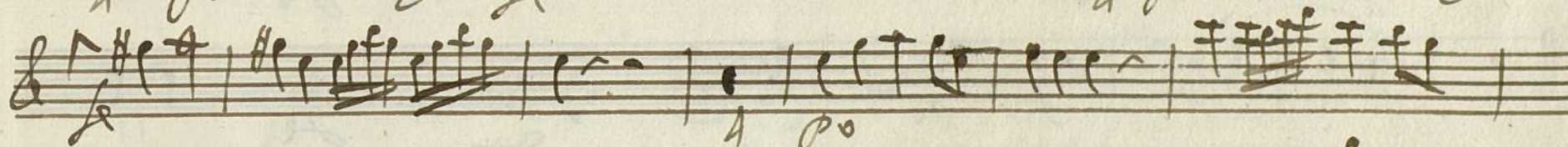
Flauta

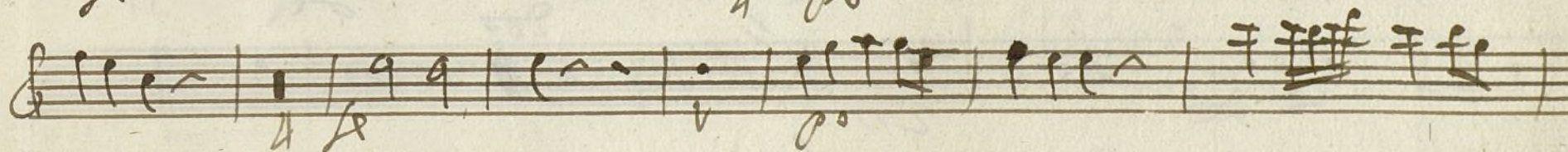
Allegro & C 

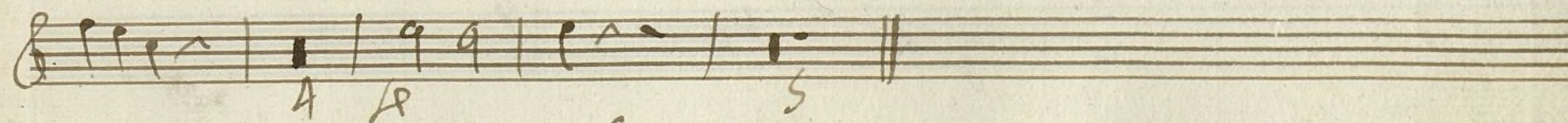




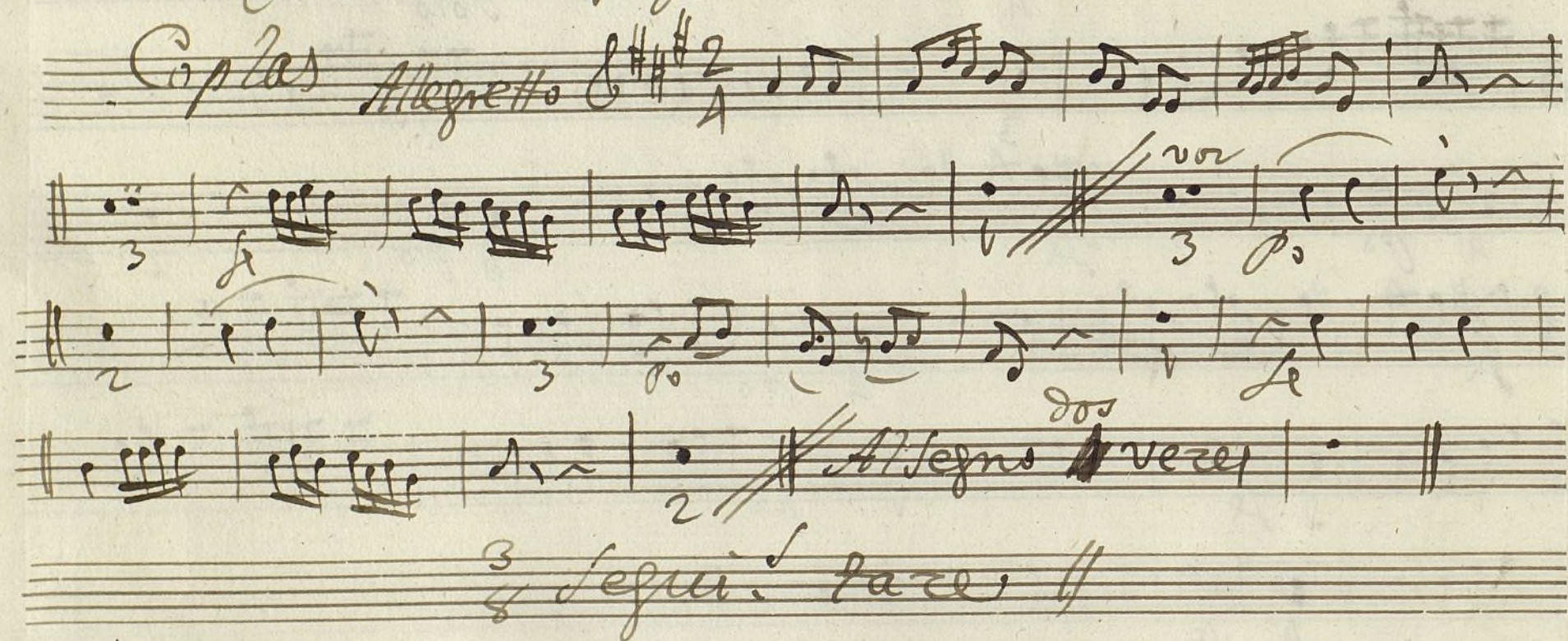
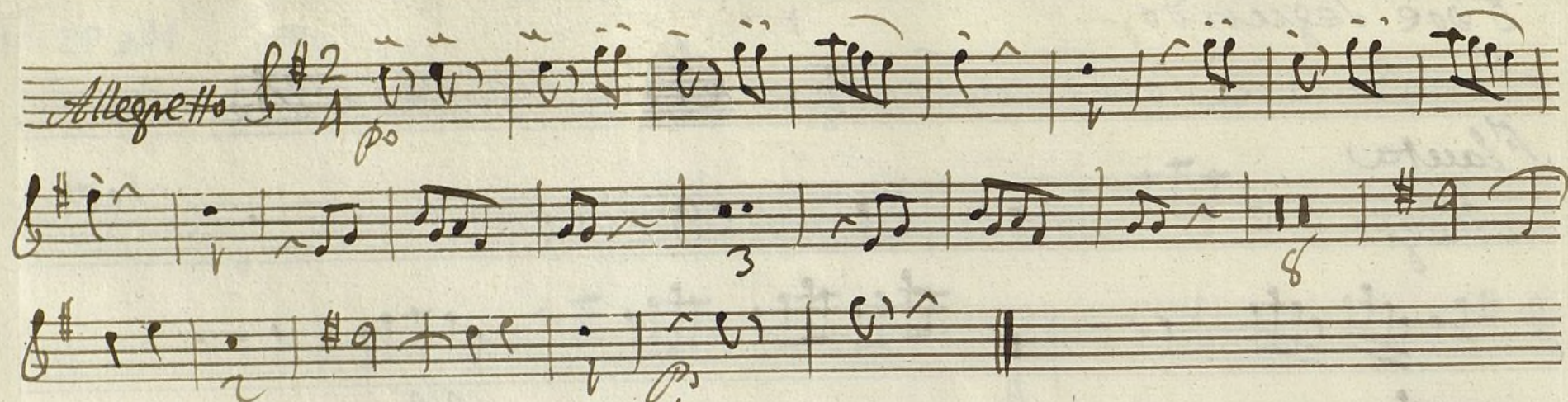








Segui. y Acritado Pace. //



Sequit. Oboe
Allegro 3/4

Pez. 15

10

p *f* *no tena* *Solo* *f*

Allegro

Ayuntamiento de Madrid

1200055560

Trompa Primera.

Mus 95-4

Tonadilla à solo; Los Agradecimientos de la Rodrigo;
Clarinetes; In C sol.

Allegro

106

vor

A 80

80

3
8 Segui! y Peris. 2do Tare //

$\frac{2}{4}$ Alleg^{ro} Paze I

Coplas base //

Seguei. Clarinet In D^{la}
Allegro 3/4

voz
Pieni.
 15
 16
 10
Allegro

Trompa segunda.

Mus 95-4

Coradilla à solo; Los Agradecimientos de la Rodrigo;
Clarinet In C sol.

Allegro & C

solo

voz

solo

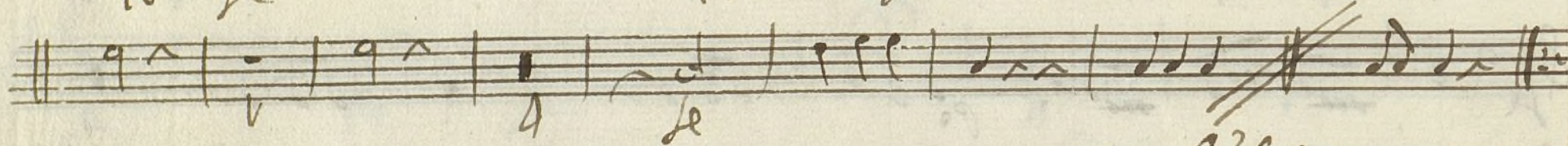
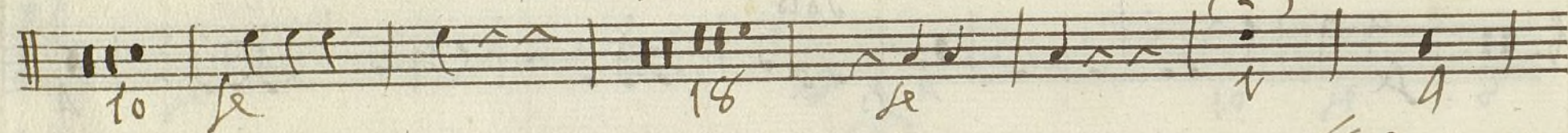
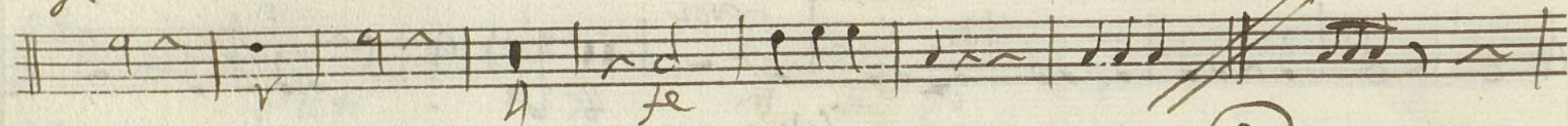
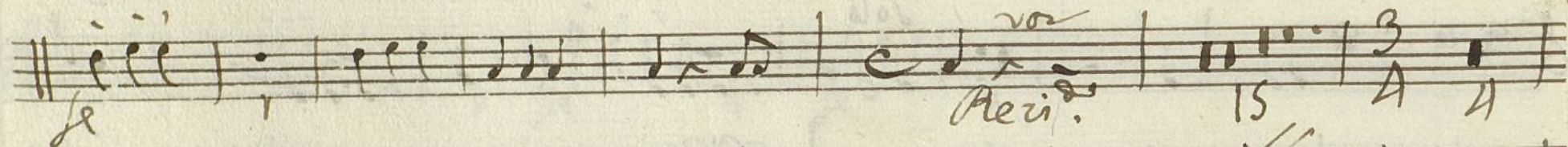
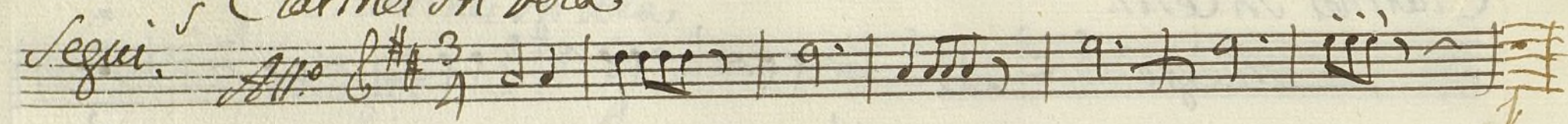
Seguir. y Re-zí. do

Alleg. Ho

Coplas

Ayuntamiento de Madrid

Seguei Clarinet In Dola



Allegro

+

Contrabajo

Conadilla à solo;

Los Agradecimientos de la Rodrigo;

//

Allegro C: 2

Handwritten musical score for a piece in 2/4 time, marked *Allegro*. The score consists of nine staves. The notation includes various rhythmic figures, primarily eighth and sixteenth notes, often beamed together. There are several dynamic markings: *p* (piano) and *f* (forte) are used frequently. Some notes have accents (^) or slurs. The piece concludes with a double bar line on the ninth staff.

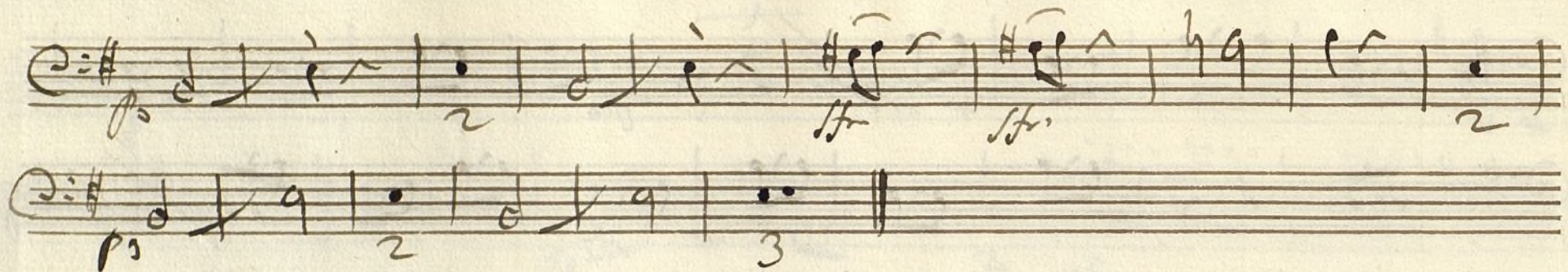
Alleg. ^{mo} vivo C: 3/8

Handwritten musical score for a piece in 3/8 time, marked *Alleg. ^{mo} vivo*. The score consists of a single staff. The notation includes eighth and sixteenth notes, some beamed together. There are dynamic markings: *f* (forte) and *p* (piano). The piece concludes with a double bar line.

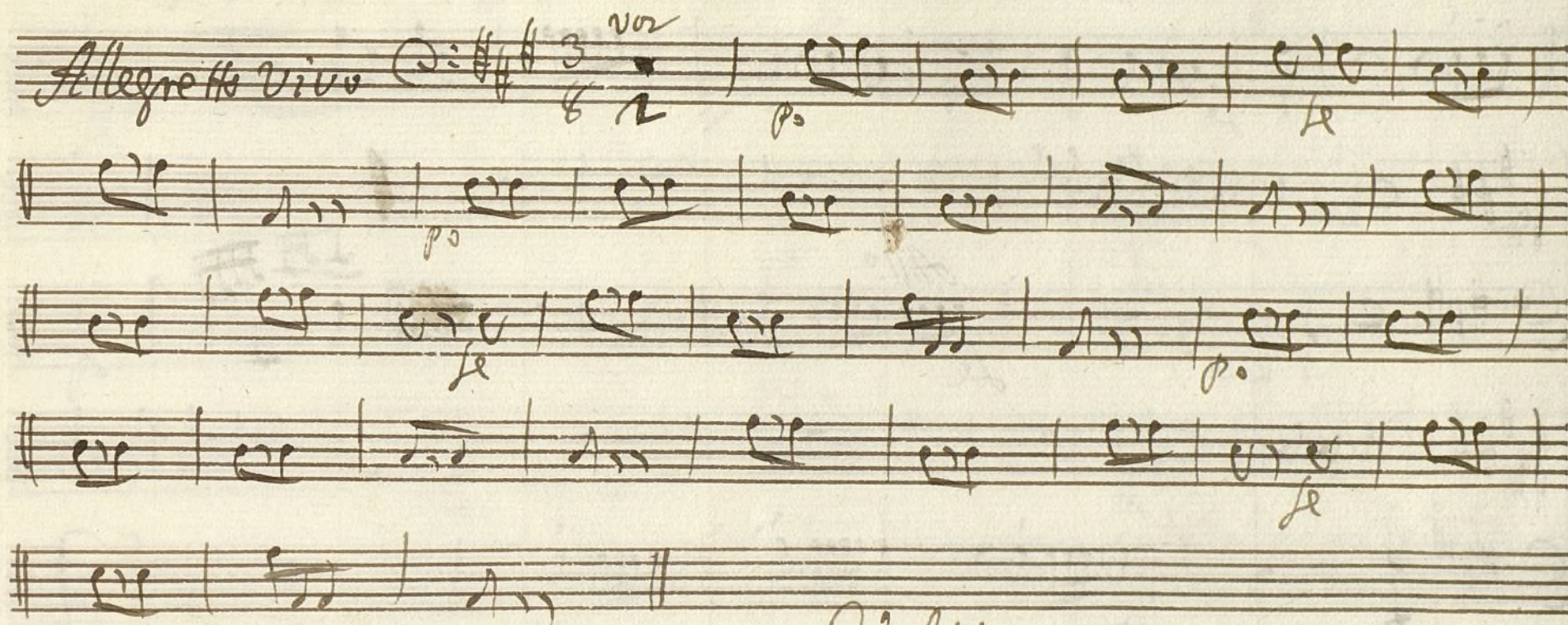
Handwritten musical score on aged paper, featuring multiple staves with notes, rests, and dynamic markings.

The score includes the following markings and annotations:

- Top Staff:** Key signature of two sharps (F# and C#), common time (C). Notes are mostly eighth and sixteenth notes. A *p* (piano) marking is present.
- Second Staff:** Key signature of two sharps, common time. Ends with a double bar line and the tempo marking *Allegro*.
- Third Staff:** Key signature of two sharps, common time. Contains the annotation *Arminivand* above the staff.
- Fourth Staff:** Key signature of two sharps, common time. Contains the annotation *Prei.* below the staff.
- Fifth Staff:** Key signature of two sharps, common time. Contains the tempo marking *Allegro* above the staff.
- Sixth Staff:** Key signature of two sharps, common time. Ends with a double bar line.
- Seventh Staff:** Key signature of two sharps, common time. Ends with a double bar line.
- Eighth Staff:** Key signature of two sharps, common time. Contains the tempo marking *Allegro* and the time signature $\frac{2}{4}$. Notes are mostly eighth and sixteenth notes. A *p* (piano) marking is present. The word *volte* is written at the end of the staff.



Coplas *Allegretto Brillante*



Volte

Sequi. Allegro $\text{C} = \text{F}\sharp\text{C}\sharp$ $\frac{3}{4}$

Peri. All.º $\text{C} = \text{F}\sharp\text{C}\sharp$

Como Prima $\frac{3}{4}$ *pº*

Handwritten musical score on ten staves. The notation includes various musical symbols such as clefs, key signatures (one sharp), time signatures (9/8), notes, rests, and dynamic markings like *p* and *le*. The score is written in a cursive, handwritten style. A double bar line with a repeat sign is present on the second staff. The word *Allegro* is written in cursive below the eighth staff.

Allegro

Ayuntamiento de Madrid

1200055560